

OMUKWETU

Registered at the General Post Office as a Newspaper

10

OMUPROFETI JUSTINA HAIHAMBO

Omusitagongalo Titus Ngula, ngoka a li a landula shoka tashi popiwa komuprofeti Justina Haihambo, sho a li moshitayingeleka shaNdonga ote eta ehokololo lyu udha kutya uuprofeti waJustina owa zi peni.

Nando shika itashi tu etele ashihe shoka sha monika kumeme Justina, oshoka pakuuva komuyeveangeliste mongeleka ya ELOK, Efraim Angula, ngoka ha ende nameme Justina, ota holola kutya "omukulukadhi nguka oha popi aluhe iinima iipe, yimwe yomuyo oombyoka tayi nyengana okuuvika ko, shila onomakutsi owala geitaalo."

Kaku na shoka sha holekwa itaashi ka hololwa, nokaku na shoka sha siikilwa itaashi ka siikululwa, osho Omuwa Jesus a tile.

Uukwanyama owo oshilongo shuuprofeti, manga oohapu dhaKalunga inaadhi thiika mOwambo, Kalunga okwa tula emoniko enene lya hololelwa Shishaama shaNdunge, ngoka a mono aana yoshilongo shaKalunga taye ya mOwambo.

"Onda mona ovana vouhamba waPamba veuya mOndonga. Nangolo daHamutenja hinga ta fi, naHaimbili Haufiku inga ta fi, ndele ovaendanandjila tave lihanene oshilongo. O-nghandanga tai kufwa oluvala layo."

Osho sha ka ningwa ngaashi sha popiwa. Pethimbo lyetu opwa holoka omuprofeti omukiintu mUukwanyama a pewa elaka kuKalunga e li hololele uuyuni wetu nosho wo ongeleka yetu; oye Justina Haihambo nokwi iluka ye mwene OMUTUMWA GWOMOMBEPO.

"Itedhululeni oshilongo shegulu osha hedha popepi." Natu tyeni mokathimbo haka: "Omedhina lyOmukulili gwetu Jesus otwe ya koshipala shoye nokohi yoompadhi dhoye. TANGO dhima po oondjo dhetu, oshoka otse alunde. Thitulula omakutsi getu. Tu sila ohe-nda, nangame wo nguka nda thikama mpa-ka, komeho gandje tula ko omushigakano gwoye. Popya tse aantu yoye otatu uvu ko. Amen!" (Osho aluhe meme Justina ha galikana ngaaka manga inaa tameka okupopya).

Tala kep. 4



Omuprofeti Justina Haihambo, ngoka a pewa etumwalaka, opo e li fale komagongalo, yo aantu ayehe yi itedhulule, nokwiilongekidhila omaudhigu taga ka adha ooitaali, omanga egongalo inaali kuthwa po.



Oshigongingeleka shopaulumompumbwe

Oshigongingeleka shoka sha gongalele omumvo gwa zi ko mEngela (28.6 - 8.7.1976) moontokolwa dhasho osha li sha holola ompumbwe yOshigongingeleka shopaulumompumbwe, 1977, molwaa sho kasha li sha mona ompito okumana iinakugwani-thwa yasho.

Patokolo ndyoka lya zi mEpingelongoleka lyomumvo gwa zi ko Oshigongingeleka shopaulumompumbwe osha utha shi ka kale ko meti 4 - 8.7.1977, mEngela. Ontumwafo ndjoka ya zi mOmbelewanengeleka omasiku ngaka tayi hiya Oshigongingeleka shopaulumompumbwe pamwe nelandulathano lyoshigongi oya eta efano lyoshigongi shika.

Omu na oshinima shomumbisofi ngele ota ka tsikila tuu oshilonga she sigo okOshigongingeleka tashi ya, Kakunga ngele te shi pitika. Omumbisofi yemwene okwa li a ningi nokuli eindito lwaali opo a manguulwe moshilonga, a ye mopenzione muukokele womimvo 65, ihe oshigongingeleka sha tekela osha indilile opo omumbisofi a tsikile ko sigo a adha omimvo 70. Omumbisofi ota ka gwanihitha omimvo 70 omumvo tagu ya muSeptemba.

Ope na ompito oku ka ninga Oshigongingeleka omumvo tagu ya nokwiindila omumbisofi a tsikile oshilonga she ngele ye mwene te shi pitika. Kombinga onkwawo pamauthompango nopaka mpango Oshigongingeleka shopaulumompumbwe kashi na uthemba okuhogolola omumbisofi shila omuwilikingeleka.

Melandulathano otamu holoka wo eegululilo momauthompango lyeyapulilo lyomuteologi omukiintu muusitagangalo, omunashilonga mu ELOK niilonga iyali "full time". Omu na wo omapopitho gaayenda mboka taya ka za kOsoomi, ngaashi: dr V. Remes, omupihakuluntutumi na dr H. Smedjebacka, omunambelewa mEhanganotumo lyAasoomi, ye oye wo omukwatakanithi metumo ndyoka tali longwa ku ELOK nEhanganotumo lyAasoomi ku-Senegal.

Oshinima ngiika tashi ka kala sha kwata monkama osho okuninga etokolo lyeegululilo momauthompango okuyapulila omuteologi omukiintu muusitagangalo. Mpaka opwa katukwa onkatu sho pwa pitikwa omukiintu a thikame koshiuvithilo.

Epulo ndika inali thikamena owala ELOK, ihe noongeleka wo onkwawo. Kombinga ya ELOK osha fa kashi shi oshinima oshidhigu unene manga, molwaa sho omugundjuka natango naateologi yaakiintu aashona.

Ngele tatu ukitha oshinima shika kOongeleka ndhoka onkulu, oshiholelwa, Ongeleka Onkwaevaangeleli paLuther muSoomi - osha kala oshikundathanwa shethimbo ele.

MOsoomi aateologi aakiintu oye li etata lyomwaa lu gwaateologi ayehe moshilongo. Ohaya longwa uteologi shi thike pamwe naalumentu. Yo ohaya mono wo ograde dhuuteologi mooUniversity. Ohaya uvitha nokulonga Ombimbeli moosikola, oyo wo aalongi mokati kaakiintu. Ihe kaye na uthemba wokutopola omasakramendi nenge okuninga elongelokalunga koshiyambelo. Oye na owala uthemba wokuhogololwa ya ninge aawiliki momahangano.

ligongi yAakwaluther mbyoka ya li tayi ilongekidhile Oshigongi Oshinene shOngongahangano yAakwaluther (LWF) shoka shi li muTanzania ngashingeyi, oya li ya popi oshindji kombinga yomukiintu. Palandulathano lyiipopipiwa yoshigongi sha LWF "Onkalo yomukiintu mongeleka nomonkalathano" osho wo shimwe shomiipopipiwa ya simana.

Omolwiinima tayi pumbwa omatokolo ga yela omuntu onawa wu hulithe ngaashi omuhiyi gwoshigongi shika sho a ti: Ileni nomagalikano neitaalo, mewiliko lyOmbepo Ondjapuki nomeviliko keithano lyayo, opo tu gongaleni mOshigongingeleka shetweni shopaulumompumbwe mEngela, pazimini lyaKalunga ngoka a hala oku tu yambeka moshigongi shetu.

Omudo 1976 owo omudo womaudjuu mahapu opashilongo. Pehovelo lomudo opa li ngaho pe na omhepo iwa, ndele mohani Mai opa udika omingungumo doita. Eongalo tali lihane neenghono, ovanhu tava i onhapo. Ovakriste vahapu va kwatwa, va hepekwa, vamwe va fila nokuli moikolokosha omu. Ovakwatwa vahapu ova alulwa ngaho.

Okwoongala peendjovo daKalunga okwa ninga kudjuu kuvahapu, unene ovo ve li kokule nongeleka. Ovakriste vetu vamwe ovo va fila momaudjuu aa inava lilwa, osheshi okuninga omutanda okwa keelwa kovananghono vounyuni ou.

Ndele nande pa kala pe na omaudjuu e fike opo, inatu kala inatu ninga elongelokalunga nande oshoondaxa imwe. Omalongelokalunga okwa ningwa. Eongalo ola mona omhepo yepapuduko; oilonga yeongalo oya longwa; okwa shashwa ounona novakulunhu, epameko ola ningwa nokwa hombolifwa omahombolo mahapu. Eengudumbibeli oda longwa noshoyo eefikola doshoondaxa.

Onda talela po ovakriste momaumbo nomomikunda nande haaveshe nohamikunda adisho, nonda tambulwa nehafo linene. Nande ndi li omupe meongalo eli, ovakriste ova tambula nge nehafo linene. Omikunda daaku odi lyaafane kokule neenghono nomatalelepo a tya ngaha otaa pumbiwa neenghono shili.

Ounona ove na oudjuu okuya kofikola omolwomifitu dile, ndele nande ongaho elongo opo li li. Ounona vahapu ohava tumwa komikunda odo di li popepi nofikola, onghee omaumbo mahapu a ninga omayakuli ounona vokomikunda ovo ve uya okukalela ofikola.

Nande otu na omaudjuu opashilongo, otu udite alushe omukumo momhepo yetu omolwomailikaneno ovamwameme. Nande twa tewa kumwe navakwetu, eshi ihatu ongala vali moyoongalele pamwe navo; ayee, Kalunga ketu ote tu pe ngaho oupenda okulonga oshilonga shaye.

Ohandi pandula eshi e tu tuma oku; ame neumbo lange otu udite ombili mokukala moshilonga eshi shaye. Apa oudjuu tau ningi munene, opo yo efilonghenda laKalunga tali ningi linene.

Ovaholike, inamu tu dimbwa momailikano eni. Ngashi mwe tu humbata momailikaneno eni momudo 1976 osho natango mu ninga momudo 1977.

Gelhard Shangeta

Nyanyukweni, ligoleni pombanda, oshoka ondjambi yeni onene yi li megulu. Oshoka osho ngeyi wo ya tidhaganene aahunganeki ye mu tetekela, Mat. 5:12.

Shoka sha ningilwa Kristus osho tashi ningilwa oonakumulandula

Aakriste oolye? Aakriste aantu yomongundu yontumba mboka yi itaala elongo lyaJesus Kristus. Oyo aalanduli yaKristus. Kashi shi oshipu okwiininga omulanduli gwaKristus, aawe. Yamwe otaa dhiladhila kutya oshipu, oshoka oya landula Kristus omukoya gombwa nokaa shi nkoka yu uka ko.

“Ngele ku na ngoka a hala okulandula ndje, oye ni idhimbwe ye mwene, ni itsike omushigakano gwe esiku kehe, ye na landule ndje, Luk.9:23. Okwiidhimbika ngoye mwene kashi shi oshipu, oshoka shino otashi ti kutya omukriste mokati kuuyuni mbuka owa talika wa fa oshiyagaya waa na esimano iyasha.

Mukriste kamu na einenepeko, uuvalekele, uusimauki, okwiihola, okatongotongo nosho tuu iinima yilwe iwinayi ya fa mbika. Omukriste oye omupika nomuyakuli gwayakwawo. Uukriste otau ku imbi okuninga shika naashiyaka tashi ningwa koongundu dhaantu yalwe, oshoka omukriste okwi iyapula. Ke na ekwatathano noongundu dhomilema dhuuyuni mbuka opo kaa shekithe elongelokalunga lye neitaalo lyomuJesus Kristus.

Kashi shi oshipu okuhumbata omushigakano gwoye mwene, nogwaJesus wo. Omukulili gwetu okwe gu humbata neidhidhimiko enene shili, oshoka oolumwe noolumwe mondjila yokuGolgata ogwe mu thindile pevi, no-gwe mu hata po.

Omushigakano gwomukriste ogo omaudhigu ngoka tage mu adha manga e li muuyuni mbuka: okupopilwa muwinayi, etidhagano, okuthindilwa kongudhi nokuliwa okapondamusita. Shoka sha ningilwa omuwiliki gwakriste, kashi kala inaashi ningilwa wo oonakumulandula ayehe. Moothina ndhika nomuuyuni mbuka otatu anduka mo keitaalo lya dhamekeka.

“Oshoka ngoka e hole omwenyo gwe, otegu kanitha, naangoka ta kanitha omwenyo gwe oye tegu hupitha.” Osha hala okutya shike, okukanitha omwenyo? Yamwe yomutse oya kanitha oomwenyo dhawo sho ya hokolola oshili yaKalunga nehalo lye ewanawa; sho ya popi sha kombinga yaanenentu yomuuyuni mbuka. Oyendji ya mbandamekwa noitaa vulu we okutya sha tashi gumu onkalamwenyo yawo.

Oshinakugwanithwa shomukriste osho okugandja uyelele muuyuni mbuka womilema wa yonuka, nokulalakanena ombili yaayehe meshito lyaKalunga. Oshili ihayi vulu okusikilwa. Ooitaali yaKristus kaa na okutula eso, oshoka ihali dhipaga omwenyo (siel), ihe olutu aluke.



Omuteologi Hilma Tshilongo, omupresidende gwEhangano lyAakiintu Aanangeshefa nAaniilonga, ye oye wo omuwiliki gwOsikola yo-soondaha mongeleka ya ELOK, ngoka a yomasiku ga piti kOshigongi shEhangano lyAakiintu Aanangeshefa nAaniilonga, kuHelsinki shaFinland.

“Otashi kwatha shike okwiilikolela uuyuni” Aakriste oyendji oya hokwa uuyuni komeho gaKalunga. Yamwe oya lengwa ya ningi omalenga omanene guuyuni mbuka. Ya dhimbwa Kalunga, oshoka oya yulithwa neliko lyuuyuni mbuka. Yamwe otaa longithwa okusheka ongeleka yaKristus. Yamwe okuhondela.

Dhimbulukwa kutya, shaashoka to shi longo, oto ke shi pulwa esiku lyahugunina. Tu dhimbulukweni wo kutya; uuyuni noshaashoka tatu shi tala, otayi hulu po, ihe oohapu dhaKalunga itadhi hulu po sigo aluhe. Uuyuni otatu u thigi po owala ngaashi twe u adha. “Uuyuni uule, omagadhi omafupi.”

Samuel Kamati

Omuprofeti Justina Haihambo

Dha za kep. 1

Ngame onda li muupagani mono omo nda adhika kelaka lyOmuwa gwandje. Elaka otali ti: "Inda moohapu dhaKalunga u dhi dhiginine, ndele oto kala nokulombwela aantu." Mokwaadhika kelaka lya tya ngeyi, inandi kwatakwa we, onda yi mosikola, nda shashwa sigo nda kolekwa. Onda shashelwa megongalo lyetu lyaDundja. Omo nda kala omimvo dhimwe. Nelaka ndika olya adha ndje mondjokana yandje yoshipagani.

Okuza mpoka ondjokana yandje oya halakana. Ondi ikalele nda kalela Omuwa gwandje, ngoka a ithana ndje muupagani. Konima yethimbo onda mono ondjokana yopakriste megongalo lyaNdobe, omumvo 1958.

Pomathimbo nomathimbo elaka lyOmuwa olya kala tali ya lya itali tumu. Sho nda kala megongalo elaka olye ya nee tali tameke okuyelithila ndje ashike, nangame opo ndi itaale kutya ondi ithanwa shili.

Momumvo 1970 mOwambo omwa li oshituthi oshinene sha hiya omagongalo agehe. Osho oshituthi shokOmandongo. MuMaalitsa 1970 onda adhika kelaka tali ti: "Ngele to mono uyelele tau holoka mombamba yoshipala shoye, efegulo lyegongalo lya thika." Elaka ndika olya adha ndje mokati komutenya, nda thetheleke po kashona. Ndele sho nda penduka inandi li dhiladhila, onda yi owala miilonga yandje.

Inapu pita omasiku ogendji uyelele owa holoka ngaashi wa popiwa, ano mokuya mukriste kwandje kehe esiku ondi na otundi yuusiku moka he galikana. Sho uyelele wa holoka, onda li te ti pamwe kegulu oko ngaa ku na iikogo pamwe olwaadhi ngaa talu adhima, lwo talu eta uyelele mondunda yandje. Mokudhiladhila nawa nokukonakona onda dhimbulula kutya omutemo nguno ohagu kala owala kungame. Nonda dhimbulukwa elaka ndiyaka nda lombwelelwe.

Hasho ashike shoka, otandi humithwa nee komeho. Natango emoniko ekwawo olyo ndi: Esiku limwe onda zi megumbo mokati komutenya nda li nda ka teka, mokweenda onda mono uyelele tau zi megulu tau endebele. Moku u tala ongaashi naanaa oshikogo, ndele owa li u na eyadhimo ngaashi olwaadhi.

Uyelele mbuno owa dthingilile omutse gwandje. Nehaluko onda kala ashike othika nda kunkwa. Onda tameke okugalikana, uyelele mbuka nosho wa lambele omutse gwandje ngwa talala ngaashi omuntu a shashwa omeya gongula. Owa li wa thikama koshipala shandje, ndele sho wa shuna megulu inandi u mona, nkene nde u mwene sho tau zi mo, owa kana po, ngame onda ka tala omeya gwandje.

Natango inapu ya elaka lyetumo otandi talithwa ashike. Onda li tandi talithwa nomeho gokomutse.

Emoniko limwe olyo ndi: Uyelele wa holokele ndje mondunda yandje sho nde ya mo omo nde u adha. Onda li te ti pamwe onte yomwedhi ye ya mondunda. Onda tameke okugalikana. Sho nda ti Amen! ondi wete uyelele tau inyenge. Onda dhimbulukwa kutya ndika emoniko natango nonda galikana. Uyelele owa li wa lala komeho gwandje. Nena owi itumbu wa thikama. Ano ngele te tumbula uyelele otashi ti: omutse gwa tema gwa fa omushigakano. Onda koneke kutya ndika emoniko, naashika omushigakano.

Onda kwatwa kuumbanda nokwiindila kwandje inandi indila ndi kale mpaka pevi, onda li ndi shi ote hulitha oondjenda esiku ndyoka. Ngiika omushigakano nguka itagu thigi ndje po we. Manga te dhiladhila ngawo, ondi wete uyelele wi itumbu pombanda. Owe etwa koshipala shandje lwotango nolutiyaali wa fa naanaa wa kwatwa komuntu, olutitatu wo otawo kala omuthika koshipala shandje ngame onda li te punguluka noku u tala. Ndele kanda li ndi shi ngele emoniko ndika otali thigi ndje po.

Nuuyelele mbuka owi ihanene ondunda ayihe nonda pendula mukwetu a tale nonda ti: Tala kombinga yokuuzilo, wo oko nee u li wa tema wa fa wolamba. Onda lombwele natango mukwetu te ti: Ou wete shike? "Ondi wete uyelele," osho a yamukula. Onda mu hokololele kutya uyelele mboka opo wa li pomeho gwandje. Hanga ndi tye tu minike molwaasho onda li nda tila noonkondo.

Ondu uvu ewi tali ti: "Ino tila, ngoye oto talithwa opo u ka lombwele yakweni." Natango etumo inali tameka otandi humithwa ashike komeho mokutalithwa.

Emoniko ekwawo olyo ndi: Onda mono omutemo gu li moombuli dhondunda yandje. Omutemo onda dhimbulukwa kutya egalikano, ano mokugalikana, ondi wete oshipala shandje nomutse nda fa owala ndi li methita. Omutemo ondi wete tagu wawala komilungu dhandje nomakutsi, ngame onda mwena owala ndi idhidhimika, ogwa lambalala okwooko e tagu kala gwa tema peke lyandje, onde gu tala nomeho ngaka gokomutse. Sho gwa zi pokati keke, ogwe ya e tagu londo komunwe omunene, nomunwe ogwa li gwa fa gwaashi gwandje.

Onda tameke okukakama na sho gwa zi ko komunwe ogwa lambalala iikumbyatha mbyoka nda li ndi isikila opo ihe sho nda kotha po kashona ondu uvu ewi tali popi tali ti: Ngele to mono ino tila ngoye ino fadhuka po, oto talithwa natango. Osho nde ende ngawo sho nda ningwa omutumwa. Onda nakulwa ashike muupaagani.

(Taku tsikilwa)

SHOKA TO KE SHI TSAKANENKA MOSHITUTHI SHOMAMBO NOMISSIONI KOLUKONDA ETI 8—10 JULI 1977

Aatumwa yotango; konima okuza kolumoho: Karl Emanuel Jurvelin, Erkki Juntunen, Juho Nissinen, Martti Rautanen, Juho Heinonen, Antti Piirainen, Karl Leonhard Tolonen.

Komeho okuza kolumoho: Botof Bernhard Björklund, Karl August Weikkolin, Pietari Kurvinen.



Ondonga kielen

ABD

ABD.

Moshindonga.

Ensimmäinen kirja Ondonga kielellä

Omukanda uatango koshindonga ua piangoa

Kirjoittanut

PIETARI KURVINEN.
Lähetysseuranaja.

Komuhongi

PIETARI KURVINEN.
ku nyolaitina

Suomen Lähetysseuran toimesta ja kustannuksella painettu.

ehale nefuto liashangona ya Suomi kokuttum'ashongi.

ABD olyo embo ndyoka li li omufuko gwoshituthi shomambo; ano olyo ndika lya tsakanitha oomvula 100 nolyo lyotangotango mElaka lyOshiwambo.

Lesha ehokololo alihe mOshigwana hashi lesha.

HELSINGISSÄ.

MU HELSINKI.

Suomalaisen Kirjallisuuden Seuran Kirjapainossa, 1978.

moshitayoloo shashangona ya Uterater ya Suomi, 1978.

TA! OSHIWANAWA IHAKU TIWA LANDA

Oshituthi shomambo nomissioni, ngaashi sha tseyithwa ethimbo nethimbo mOmukwetu nomoombilive dha nyolelwa omagongalo agehe mu Elok, osha kala shu uvitike owala ngokatana komiilya. Omalongekidho gegongalo Olukonda, ndyoka li li omutaambi gwaayenda yoshituthi, gombelewangeleka noshitayingeleka, Oshinyanyangidho nOstolamambo, mbika otayi holola ethimbo lyoshituthi lya thika noshi li moohengo nokuli.

Omukwetu wo okwa hala oku mu pa one aaleshi pafupi, shoka Oshinyanyangidho nOsto-

lamambo ya longekidhila aayenda yoshituthi sheti 8-10 Juli 1977.

Moshituthi otamu ka etwa omambo gi ili nogi ili na unene tuu ngoka ga longekidhwa owinawina omolwasho — nguka omumvo gwo-mambo.

ABD — Omukanda uatango koshindonga ua piangoa — kuPietari Kurvinen, olyo embo

(Tala kepanja eti 4 okuza mpaka to yi kolyo)

Omumbisofi dr. Leonard Auala oye omuuvithili gwoshituthi, manga omatanga goondji-mbo, mewiliko lyaMatti Endjala na Magdalena Kambudu, tage ke tu towalekela oshituthi ashihe neuvitho lyoondjimbo ethimbo nethimbo.

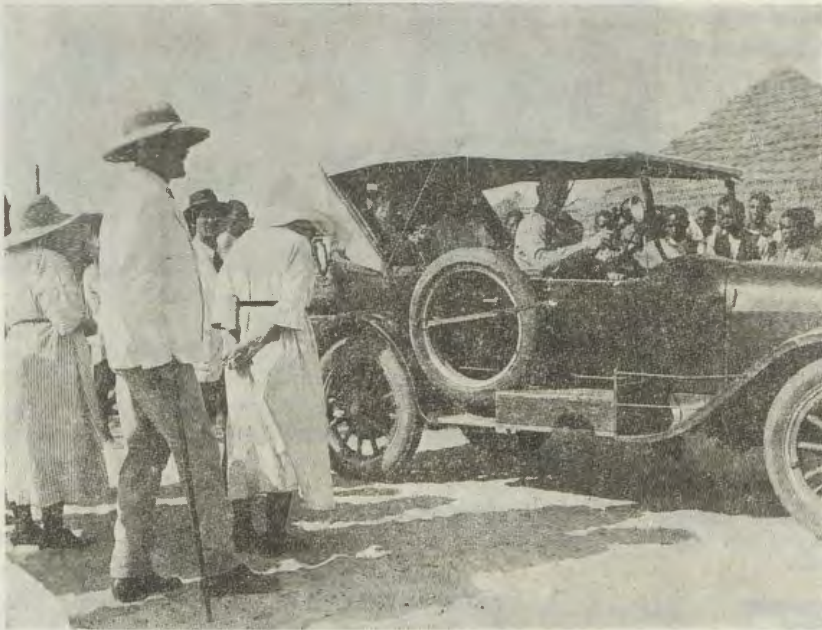
Otaku ka kala oongalo omolwilongangeleka mbi: ongalo omolwiilonga yiinyolwa yOshixwaga nOshingongolo — noongalo omolwoshilongatumongeleka, meni nopondje ya Elok (Senegal naAngola).

MOsoondaha, momissioni, tatekulu E. Angula ote ke tu pula tu mu pitikile, opo e tu tolokele nkene ehupitho lyaKalunga lya longwa montaneho yaantu ayehe.

Moshituthi otamu ka ndjandjukununwa wo nawa ehistoli lyuunamambo moshilongo she-tu kenda nenyakwa lyiinyolwa, omusamane Toivo E. Tirronen.

Oshihauto shotango oshe ya metumo omumvo 1920. Mefano ndika lya fanekwa omumvo 1925 okuza kolumoho omu na Hilma Kupila naViktor Alho (omukulu ntutumwa). Komeho gaAlho oku na Selma Rainio ta popi neefolo Tarkkanen, ngoka a kuutumba moshihauto. Omuhingi oye Gabriel Asikainen. Ngiika ehauto ndika oloyo kwa li li na omeho haga tala nayi (Lesho Onakuziwa yandje).

Aasita yotango Aawambo, mboka ya yapuhwa eti 27 lyaSeptemba 1925. Okuza kolumoho: Simson Shituwa, Juuso Ngaikukwete, Nabot Manasse, Obadja Ihuhwa, Sakeus Ihuhwa, Gideon Itula naPaulus Hamutenya.



KUUME KETUMO

OSHIFO — KUUME KETUMO — SHOKA OPO TASHI HOLOKA LWOTANGOTANGO TASHI FATULULA ONKALO YETUMONGELEKA MU ELOK, OKO TASHI KA KALA WO KOSHITU-THI SHOMAMBO NOMISSIONI, KOLUKONDA. OTASHI KOTHA 30c.

OKATEKISUMUSA OKAŠONA.

ka

Dr. Martin Luther.

Eṅaṅangizululo etitano.

KOniipa moṅiṅaṅgiṅo ṅa Mission 1902.



Nguka oye omukwaniilwa gwaNdonga gwotango omukriste, Kambonde kaNgula, a valwa 1889 nokwa hulithile oondjenda eti 8 Aguste 1912. Okwa li a kala omukwaniilwa gwoshilongo okuza 10 lyaKotoba 1909 sigo eti 8. 8. 1912.

Ngele owa hala okuuva nawa nenge okupungula omafano ngaka nehokololo lyago alihe lya gwana po, tala kepanja lya landula, ngoye ilandela omambo nga: Nakambalekanene, Oshigwana hashi lesa nOnakuziwa yandje. Omambo ngoka otage shi ku kuthile mo nawa itaaga thigi ko.

AAYENDA YOKOKULE PAMWE NATSE MOSHITUTHI

Opwa tegelelwa moshituthi mu ka kale aayenda taa zi kombanda yomafuta omusamane Viljo Remes nomusamane omukwawo Hendrik Smedjebacka. Ayehe oyo aandohotola muuteolohi.

Omusamane V. Remes oye omupehawilikitumi mEhanganotumo lyaSoomi nokwa li omutu-mwa muPakistan. Omusamane nguka oye te ke eta ekundo lyEhanganotumo moshituthi.

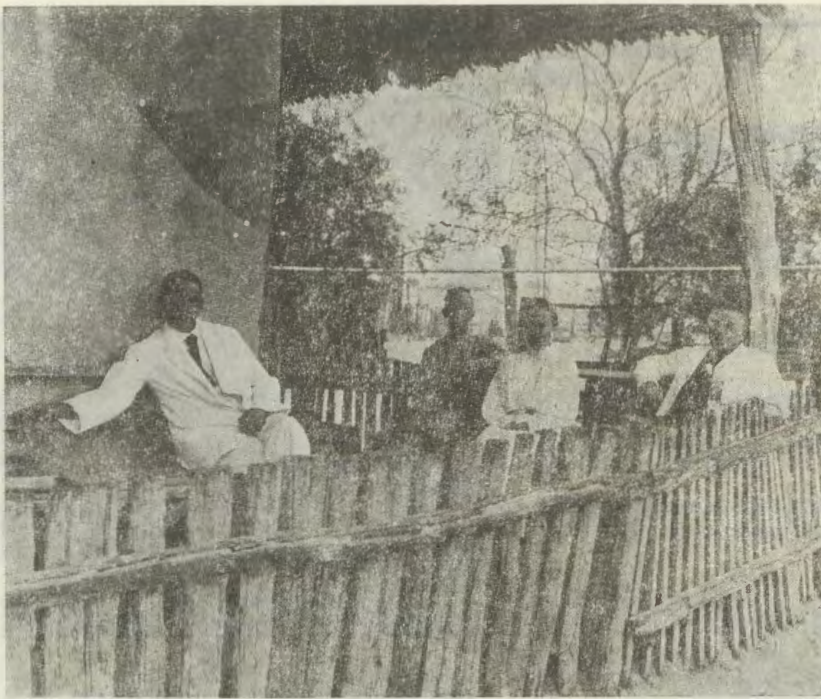
Omusamane H. Smedjebacka okwa li omuwilikingeleka muTanzania nomulongi moskola yuusita muMakumira. Nguka oye nduno pwa tegelelwa e ke etele oshituthi ehokololo lyoshilongatumo muSenegal nosho tuu oshilonga shoongeleka palwe muAfrika.

Aayenda mbaka ayehe, ngaashi taye ya pahiyu lya Elok, opwa tegamenwa taa ka kala mOshigongingeleka shopaulumompumbwe mEngela nokuza hoka oyu ukilila kOlukonda.

Mbika iitothwamo yowala melandulathano lyaashoka tashi ka kala mo, ihe iinima yi ihwa po, oto yi mono nawa melandulathano lyoshituthi.

Oshituthi otashi ningwa lumwe notashi hulithwa lumwe, onkene ngoka ta kala inaa ya ko, ota yagwa oshindji.

AASIMANEKWA, MBOKA HAMU MBESTELE OMAMBO KOSTOLA YOMAMBO KONIIPA, OTATU MU DHIMBULUTHA NATANGO, KUTYA IHATU TUMU OMAMBO MOONGUNGA. NGELE WA HALA EMBO LYOYE LI TUMWE, NENA SHO TO MBESTELE TUMA WO OFUTO YALYO MUMWE NEMBESTELO LYOYE. INO DHIMBWA OKUTULA MO 20c MOLWOPOOSA, NGELE EMBO LIMWE.



OoRautanen kolupanda lwawo kOlukonda omumvo 1920. Okuza kolumoho: Reinhold, memefrieda, Johanna natate Martti. Omukadhi gwa Reinhold noyana oya li muSoomi.

OSHIWANAWA IHAKU TIWA LANDA

(Dha za kepanja 1 to shuna lwanima okuza mpaka)

ndyoka lya tsakanitha oomvula ethele okuza uuna lya holokele 1876. Ndika olyo ano embo li li omufuko gwoshituthi shomambo. Mulyo omo mwa tsapuka iitayi nokutya uumbo nomambo galwe ga ka landulako melaka lyetu lyOshiwambo. Eholoko lya ABD olyo etindi moka mwa zile elaka lyetu li kale elaka lyopakunywala, pashikaha nopakunyangidhwa, miifo nomomambo sigo lya ningi elaka lyomoosikola nolyopambeleva. Okambo nkaka ABD, oke na omapandja 32 notaka gu 50c.

Natango tuu kombinga yomambo goshituthi, otaku ka monika embo limwe mOshikwanyama, lya holokele eti 19 Aguste 1902. Ndika olyo **OKATEKISUMUSA**. Ndika olyomapandja 8 notali pula 30c.

Mokulanda uumbo mbuka uukulukulu, otashi vulika yamwe yaa uvite ondilo yoshikalimo shawo. Ihe ngoka ha simaneke elaka lye nokuhole okunongonona, otaka makela uutoye welaka moka uumbo wa shangwa nomuntu oto kuminwa wo omukumo nuupenda waatotiyomunyolelo gwelaka lyetu, na unene tuu omaenditho gaKalunga mokukokitha nokutunga oshigwana shetu moombinga adhihe.

Pokati mpoka opwa longekidhwa ishewe omambo omapelela gaali. Lyotango **OSHIGWANA HASHI LESA** ku Toivo E. Tirronen. Embo ndika lyomapandja 81 otali ndjandjukununa nawanawa, nkene she enda, opo ku holoke endiki lyuunamambo melaka lyetu. Sho taku popiwa endiki lyuunamambo, itaku dhiladhilwa owala Ombimbeli nokatikisa nosho tuu, ihe otaku dhiladhilwa wo iifo nuunamambo-shambudhi, ngaashi okambo ko kene take shi hokolola. Mboka ye hole okukonakona nokuu-va iinima yomalaka, otaa ka likola oshindji mokambo nkaka taka pula owala R1.20.

Oshinyanyangidho sha Elok, moshiketha shasho shiilonga osha matula mo ishewe uunambonambo embo lyomapandja 158 nolya mangwa nomapeko gakola nawa **NAKAMBALEKANENE**. Nalyo olye etwa kenda nokomungo gwelaka lyOshindonga Toivo E. Tirronen. Nakambalekanene olya humbata iinngwanima yokuvalwa kwongeleka noshigwana shika, uuna sha valelwa muKristus. Olya tameka niiningwanima yokomeho gOmandongo, manga inaaga tseyika medhina ndyoka ge shiwikile nena. Otali popi shoka aahongi yonale ya longo nonkene ya kalathana naakwaniilwa yoshilongo shetu.

Omuleshi gumwe okwe li luku kutya olyo embo lyondjokonona yoshitheta shokuvala Elok. Nakambalekanene otali ka yamukula omapulo gaaleshi oyendji mboka haye ya kutse nokupula Afrika jUuningininomutenja. Ano muuwanawa Nakambalekanene olya pita po puAfrika jUuningininomutenja. Oli na omapandja 158 na omafano omawanawa ngoka taga thindikile omulyo gwomahokololo mohokwe yomuleshi gwalyo.

Omafano gamwe gomulyo otaga ka holoka ishewe moshituthi ge li molupe luukalata, tau opalele okulongithwa ngaashi okutumina kuume koye nenge shaa tuu.

Uumbo nomambo nosho uukalata wa popiwa mpono, otau ke ku tsakaneka moshituthi kOlukonda.

Oshiwana aniwa ihaku tiwa landa, yopomotumba kay' ehama, ngele ye ku adha kutha po shoye.

Nale tu tsakaneneni ano kOshituthi.

UUPUKA WOMOMANDJANDJA OTAU KONDJI-

THWA NGIINI?



Omundohotola Hannu Kyrönseppä ngoka a shunine kOsoomi omumvo gwazi ko konima yokulonga kwe moshipangelo shaNandjokwe uule womimvo heyali. Tatekulu Kyrönseppä ngashingeyi oha longo mOshikandjo shOkukonakona Omikithi dhilongo mbyoka yili mo-Tropical Area, muAurora. Nando tatekulu Hannu okwa shuna koshilongo shawo, aluhe ota dhiladhila ukolele woshigwana shika. Tala oshinyolwa she shelondodho kutse pepandja mpaka.

Miipangelo yongeleka yomOwambo (Lutheran Hospitals) ohamu holoka esiku kehe aantu oyendji mboka ya kwatwa kuupuka. Otashi vulika kutya omuntu sho a pangwa omolwuupuka nuupuka auhe wa tidhwa mo muye thilu, otaka kwatwa ishewe kuupuka sho pwa piti omasiku gamwe.

Omolwashike ngeyi?

Omolwashoka, ina tseyu uupuka otau zi peni notau keelelwa ngiini.

Aantu mboka ya kwatwa kuupuka wi ili nowi ili, oye thike peni ano? Uupuka unipo ano tau hepeke oshigwana unene?

MONandjokwe omwa penduka ehala lyokukonakona iinima mbika nokukambadhala okukonga omayamukulo komapulo ngaka. Muule woomvula mbali, okuza 1974 sigo 1976, aantu ye thike po 430 mboka ya holoka miipangelo kONandjokwe, kONakayale nenge kEngela, oya konakonwa uupuka. Aalongi oyendji yomiipangelo mbika oya longo nuudhiginini mekonakono ndika.

linenenima mbyoka ya holoka po otayi landula mpaka.

Aakonakonwa	MONandjokwe	mEngela	mONakayale
ayehe kumwe	215	112	103
Uupuka:			
Hookworm			
(Ancylostomatidae)	129 (60%)	45 (40%)	10 (10%)
Strongyloides	45 (21%)	22 (20%)	10 (10%)
Entamoeba histolytica			
(= Ameba)	5 (2%)	5 (4.5%)	2 (2%)
Giardia lamblia	13 (6%)		3 (3%)

Osha holoka kutya unene uupuka waHookworm (mboka hau ithanwa olwindji Ankylostoma) nowaStrongyloides (agehe omazinyo) otau hepeke aantu oyendji. Otashi vulika kutya momahala gamwe oopersenda 60% dhaantu ayehe (ye vule etata lyaantu ayehe) ya kwatwa kuupuka. Nando yamwe itaya ehama nande, otashi vulika oyendji ya kwatwa kuuwehame nokuli omolwuupuka wawo. Ngele tatu tala omiyalu ndhoka dha nyolwa mpaka, otu na okuzimina kutya oshigwana otashi hepekwa shili kuupuka mbuka.

Uupuka waHookworm nowaStrongyloides otau hepeke ngiini omuntu?

Ngele omuntu oku na uupuka owindji kashona, nenge omushona natango, nena otashi vulika te ehama mela nombinzi ye otayi nkundipala. Ombinzi otayi hepekwa unene kuHookworm mboka hau thipi mo ombinzi yomuntu moontumba dhomandjandja. Sikulimwe ombinzi ya nkundipala (Hemoglobin ya kuluka) sigo oompoka uuna omuntu a kwatwa kuunkundi uunene, e na oshitelele nokwa toka nayi nota loloka mbala nando okwi inyenge kashona. Otashi vulika kutya omuntu a tya ngaaka ta mana oondjenda nokuli.

Hookworm na Strongyloides otau zi peni ano?

Uupuka mbuka otau taandelithwa koonyata dhaantu. Ngele aantu taa yile kondje mepya nenge pelundu, uupuka (uuyi nenge omazinyo) otau piti momandjandja nokuya mevi moka tau koko sigo okonkatu yimwe yokomeho. Sho wa koko sigo oompoka, nena otau vulu okuhita moshipa shomuntu ngele te ende mepya nenge pelundu inaa zala oongaku. Uupuka mbuka waHookworm nowaStrongyloides otau vulu okupita moshipa shomuntu muule wethimbo efupi nando oshipa shi kale sha kola nawa.

Mekonakono ndika lyokONandjokwe omwa holoka natango, kutya hayendji mboka ye na Ameba (Entamoeba histolytica) momandjandja gawo. Kombinga onkwa wo, oolumwe Ameba ta vulu okweetela aantu oshiponga oshinene. Esiku limwe uupuka waAmeba otau vulu okuza momandjandja nokuya mombinzi nokuthika sigo okehuli (nenge palwe molutu) mpoka tau vulu okuninga oshitumbuka oshidhigu. Nena omuntu ota alukwa nayi noku na okupangwa moshipangelo neulumo nokuli.

Uupuka waAmeba otau zi peni?

Ameba ota kala mevi, miimeno noshaampoka pwa nyatekwa noonyata dhaantu ye na uupuka waAmeba. Omuntu ota vuu okukwatwa kuAmeba ngele a nwa sha nenge a lya sha sha nyatekwa kevi nenge koonyata. Unene omeya, iimeno niyimati ya toolwa pevi ohayi vulu okutaandelitha Ameba momuntu. I-shewe omuntu ye mwene ota vulu okwiiyetela Ameba ngele ta li niikaha ya nyatekwa kontsi yevi nenge koonyata (nando ya fa ya yela pakutala nomeho).

Tala kep. 6

124

Epangelongeleka olya zimine epopilo lyaaprofessori (aalongi) moUniversity yaHelsinki kutya omusita Tomas Shiwute sho ta humu nawa komeho meilongo lye a tsikile natango sigo a adha onkatu yuundohotola muuteologi (andola sigo omumvo 1978). Epangelongeleka otali indile Ehanganotumo lyAasoomi li mu sile natango oshimpwiyu meilongo lye.

133

Epangelongeleka lya lesa ehokololo lyiilonga yOmusiki ya ELOK nepandulo, olya dhimbulula eitulomo nolya halele oshilonga shika o-mayambeko gaKalunga.

138

Ehokololo lyiilonga yokweevaangelitha, lyomusita Natanael Shinana lyomumvo 1976 olya leshwa nepandulo, opwa dhimbululwa kutya aakriste momagongalo otaa gongala okupulakena elaka lyenyanyu (lyemanguluko), nonando opu na uunye muyawe. Ihe Kalunga ota pandulwa sho oyendji yomaakuluntu nomagundjika taa hempulula oondjo notaa monom emanguluko.

143

Ehokololoningomwa lyomusamane T. E. Tirronen (lyomumvo 1976), moka mwa dhimbululwa eitulomo enene miilonga yiinyolwa melaka lyOshindonga, mbyoka yi li notayi ka kala eliko lyoshigwana shetu, olya leshwa nepandulo enene.

Okukondjitha uupuka womomandjandja

Dha za kep. 5

Uupuka otawu yandwa ngiini ano?

Ngele otwa hala okuyanda Ameba, otu na okudhigini na uuyogoki miinima ayihe. Unene ikulya ayihe oyi na okulongekidhwa nawa: limeno niyimati nayi opalekwe nawa. Omeya agehe gokunwa naga fulukithwe sha gwana. Iikulya ayihe nayi telekwe nawa sigo uupuka auhe wa si. Kombinga onkwawo, otu na okukotoka tu lye aluhe ikulya yetu niikaha noniilongitho ya yela, twaa faalele uupuka washa momakana getu.

Otatu yanda ngiini ano Hookworm naStrongyloides?

Ngele twa tseya kutya uupuka mbuka otawu zi peni, nena otwa tseya wo oku u yanda. Oshinima shotango osho shi: Okuya kondje pamukalo gwo opala. Shino otashi ti kutya, kehe gumwe gwomegumbo e na okuya kondje mehala ndyoka lya longekidhilwa okuyilwa kondje. Otashi ti natango kutya, kehe egumbo otali pumbwa unene li kale li na ehala lyokuyila kiihwa, naakuluntu oye na okusa oshimpwiyu kutya aanegumbo ayehe ya longithe wo ehala ndyoka. Omukalo nguka gwa simana gwokuya kiihwa mehala limwe, otagu tu kwatha mokwaataandelitha uupuka moonyata, mepya nokelundu. Shoka sha tumbulwa osho oshinima shotango noshinene mokukondjitha uupuka auhe womomandjandja.



Kakele kongundu yolwiimbo yameme Magdalena Kambudu ndjoka tayi ka imba mOshituthi shOmambo nOmissioni, kOlukonda, eti 8-10 lyaJuli nuumvo, melandulathano lyoshituthi otamu holokele wo: ondjimbo yopashituthi, mewiliko lyenyakwa lyomawwiimbo, omusitagongalo Matti Endjala, ngoka ta monika mefano ndika.

*TU TUMINA EDHINA LYOYE
NONDJUKITHI YOYE, PA-
MWE R2,00, OPO TU KU TU-
MINE OSHIFO SHOMUKWE-
TU.*

Oshigongingeleka shopaulumom-pumbwe otashi ka kala ko meti 4-8 lyaJuli 1977, mEngela.

Oshitiyali mokuyanda Hookworm naStrongyloides otu na okuzala oongaku ngele tatu ende mepya nenge pelundu pwa nyatekwa koonyata (nokuupuka). Oshititatu, ngele pwa monika kutya omuntu oku na uupuka, oku na okupangwa kaa taandelithe we uupuka mooyakwawo.

linenenima yokukondjitha uupuka womomandjandja:
1. Uuyogoki mokulya nomokulongekidha ikulya.
2. Omikalo dho opala dhokuya kiihwa (ngashi pwa hololwa moshinyolwa shika).
3. Okupangitha mboka ya kwatwa kuupuka.

Oministeli yotango ya S. Afrika, omusamane Vorster, okwa li a papi koshinyolwa shoka sha holokele moshifo shedhina "Rand Daily Mail", oshifo shopaati yomu S.Afrika "Progressive Reform Party". Mokupopya kwe mangwa kwa li taku kundathanwa ekotampango (ndyoka opo lya totwa po kepangelo lya S. Afrika) lya Suidwes, omusamane Vorster okwa holola kutya oshinyolwa osha nyolwa komusamane Hennie Serfontein (omunyoli gwembo lyedhina Namibia).

Moshinyolwa shoka omusamane Serfontein okwa nyola ta ti, okukutha po omukundu gwa-Suidwes pwaa na omusamane Sam Nuyoma, omuwiliki gwa SWAPO, oshinima itaashi vulika; shoka tashi yelekwa owala nekandulopo lyomukundu gwa S. Afrika pwaa na omusamane Nelson Mandela.

"Shika osho oshinyolwa tashi shekitha inaandi shi mona nale moshifo shika," osho omusamane Vorster a ti.

(Advertiser)

KuRussia otaku ka tuminwa Eembibeli

Ongongahangano yOvakwaluther mOunyuni (LWF) oya yakula edimino kovakwanepangelo vaRussia, opo i tume Eembibeli dOshindowishi 5 000, komaongalo omuRussia.

Edimino eli ola shiivifwa ku Dr.Paul Hansen, hamushanga wa LWF, moshikondo shelongelokumwe longeleka muEuropa. Dr. Hansen okwa ile kuMoskou meti 26 Mai neudo, oku ka talela po omaongalo muNovosibirsk, Frunze na Dunsechambe, oilando i li muSiberia, Kirgiz na Tadzikistan omo mu na Ovakwaluther hava popi Oshindowishi.

Dr. Hansen okwa talela po omaongalo omuRussia konima eshi a pula ediminino eedula dihapu. Okwa hokolola kutya okwa mona onghalo yeengudu dovakriste vahapu nonghene tadi longo.

Oilyo yo LWF oyo hai udifa momaongalo omo hamu popiwa Oshindowishi. Ovakriste kwinya "kave na efatululo la yela louteologi; kave na elandulafano lonhumba mongeleka ile elongekido lasha li wetike pondje, ndee eita-velo la kola lopaumwene, oundombwedi wa xwama kounyuni, okuhafele okukala momalongelokalunga opangeleka neindilo lakeshefikku, otai yandje efano li na omwenyo koukriste wopehovelu wovayapostoli nhumbi wa li wa tya.

Dr. Hansen ota ka mana etalelopo eli diva, kuRussia, opo a ka yandje ehokolo letalelopo laye moshiongalele osho shi li muDar-es-Salaam shaTanzania.

(LWI)

Onkambadhala dha kala tadhi ningwa klilongo yokUuninginino okufala Namibia memanguluko "pamukalo gwombili", oshinima inashi panditha natango SWAPO, molwaasho S. Afrika ini iutha natango komakankameno agehe ga VVO.

Pahapu dhaawiliki ya SWAPO, omusamane Sam Nuyoma, omupresidende gwehangano ndika osho wo omusamane Daniel Tjongare-ro, omupehamunashipundi gwa SWAPO mu-Namibia, oya holola kutya SWAPO ita ka tambula ko ehogololo; omanga aakwiita ya S.A. inaaya za mo muNamibia nomanga aanandholongo, aanapolitika, inaaya mangululwa.

Edhiladhilo lyoministeli yotango ya S. Afrika, omusamane Vorster okuhogolola komufala, ngoka ta kala ta tonatele muNamibia sigo mwa ningwa ehogololo lyaayehe, pamadhiladhilo gomusamane Nuyoma, oshinima tashi yolitha.

Omupresidende Nuyoma okwa li ta popi moshigongi shaanankundana muLuanda, moka a li a kala omolwoshigongi shOkomitiye yokumangulula yEhangano lyUukumwe wAayafrika (OAU).

Okuninga ehogololo muNamibia pamakankameno gomusamane Vorster, omusamane Nuyoma okwe shi fatulula kutya osho opulanda yokutsikila natango nomavigumbo, ye S. Afrika a ka hepeke natango Aanamibia.

Mokuhulitha oshipopiwa she, Nuyoma okwa holola kutya SWAPO okwa kala e na ehalo okukundathana nepangelo lyaPretoria, opo Namibia a falwe memanguluko.

MAXUILILI A SHUNWA MODOLONGO YOMEUMBO

Omupresidende wa SWAPO muNamibia, omushamane Nathanael Maxuilili ou a kala eedula nhano modolongo yomeumbo muKuissebmond mOmbaye, okwa wedelwa ko natango eedula nhano, kOministeli yOuyuki, omushamane Jimmy Kruger, odo tadi ka xula meti 31 laMai 1982.

Omushamane Maxuilili okwa ngabekelwa meumbo omolwOveta yOulinawa womeni loshilongo, shaashi vati okwa li e na mo sha momalinyengo oo taa etele ekalekopo loveta nelandulafano loshilongo, oshiponga.

Oveta ei oya kwatela mo shihapu shomalinyengo omunhu; shimwe oshoosho kutya Maxuilili ina pitikwa okufiya po Ombaye, okuya ponhele yelikalekelwa yOvalaule, yEembaatili ile yOvatilyaane; okuya poUniversiti yopapangelo, yopaumwene ile keshe pofikola yonhumba.

Maxuilili okwa indikwa yo: okulongekida, oshinyolwa ile okushoongela, okunyanyangida, nokutandavelifa-oshinyolwa keshe.

Tala kep. 8

OMAHEPEKO OKOLUNDUME LANAMIBIA A PWILIKINWA

Moshiongalele shaxuuninwa shEpangelongeleka la VELKSWA omwa pwilikinwa nolukeno kehokololo lomahepeko oo taa twikile natango molundume laNamibia.

Onghalo ei oya etifa omhepo yepiyaano nokuhenetulumuko. Omahokololo omawiko omambo, omanyeko ovanhu nomapya, omadengo nomafininiko oya etela oilyo yomaongalo etu okuhenombili nelineekelo.

Omakwato ovanhu nomahepeko opaupwidi osho yo omahanauno omaliko ovanhu, oyo oinima yefiku keshe.

Fye otwa didilika enepalo lokuhelididimika moilyo yomaongalo etu. Osha popiwa luhapu kutya ovanhu ove lididimika efimbo lile, ndele paife elididimiko oli li po tali ninipala. Mokuhenetelelo ohava pula tava ti: "Olye te ya etu kwafe?"

Epangelongeleka otali pula koilyo yongeleka yavo iha kanife eteelelo nomefimbo eli lengwangwano. Onakwiiwa oya twima shili; ohatu ningilwa omaudaneko ndee iha wanifwa noihaa diininwa; eendjila odo da diladilwa kovanapolitika oda fa tadi twala mepumafano; ovanhu otava fi oipundjamenye mekungu lohonde oyo tai tika moshilongo shetu, nefiku keshe elineekelo lokukandula po omukundu pambili otali kana.

Okuhelineekelafana otaku kulu efiku keshe notaku mene omidi monghalafano. Oukaume pokati kovanhu owa teka, shaashi ovanhu otava limbililwafana. Ohole otai kana noutondwe otaw londo pombada keembinga adishe.

Omu na ngaa vali onhele ili nawa moshilongo shetu? Otu na okuliyandja koilonga ihe na oushili oyo tai longwa medu letu? Oo Omapulolimbililo oilyo yomaongalo etu.

Otwa didilika onghalo yoshiponga tai xumu komesho meitavelo mokati kovanhu vetu. Otwa hala oku shi popya sha yukilila komangalo etu, kutya fyei eitavelo letu kali fi eitavelo lovafininiki, ndele nee eitavelo lashili lomuKalunga - katatu - umwe. Otwa hala okushiivifila omaongalo etu kutya omalihumba to onai aavo have li ti ovakriste kae lile po eitavelo lopakriste.

Fye otu udite ekuwaano lovanhu vaNamibia ovo ve li koshi yomauehame onghese otu na ondjikilile okulila pamwe nomupisalmi ou ta ti:

"Ava tava tondo nge epwanga, ovahapu, ve dule omuvalu weexwiki dange. Oyatondi vange otava dulu nge eenghono, tava kondjifa nge ndihe na aushima vo tava ti nandi fute osho inandi shi nyeka ko".

(Ps.69:5)

Okuhenetelelo otaku tu tilifa opo tu efe po eitavelo letu, ndele fye otwa itavela kutya Kalunga ote tu udu nge hatu mu indile etu xupife mombwili omu.

- "Eameno lange, nohotengulu yange Kalunga kange, ou handi mu lineekele.
- Ote ku tuvikile nomalwenya aye nomomavava aye omo to hondama.
- Oye eshi a dama kuaame, onda hala ndi mu xupife, nda hala ndi mu amene, osheshi ota shiiva edina lange.
- Ngenge ta ifana nge, ame ohandi mu udu ohandi liameke kuye moudjuu waye ame ndi mu mangukule mo," Nohandi mu fimanekifa."

(Ps.91:2,4,14,15)

Ohatu pula oilyo yomaongalo etu po i:

1. konge epopilo (eameno) lavo muKalunga ou e liholola okudja nale mokati koikungulu kutya oye epopilongulu lashili;
2. indile Kalunga ya mana mo a etife ombili moshilongo shetu;
3. indilile ovahepekwa, ovanakuhodi, eefiye novafiyekadi;
4. indile Kalunga omolu eenghwate novapongekwa kondje yoshilongo ovo ve li mowike;
5. indilile ovo tava kongo emanguluko lashili loshilongo eshi;
6. indile Kalunga a talaleke ovo va kanifa ovaholike vavo notava limbililwa onakwiiwa yavo.

Hano fye ovakwanepangelongeleka ohatu kundu omaongalo etu aeshe nondjovo yaKalunga ei:

"Oshiwana, lineekeleni alushe muKalunga-Mu mu mbubulileni omitima deni, Kalunga oye ouhondameno wetu."

(Ps.62:9)

MAXUILILI

Dha za kep. 7

Okwa indikwa yo okukala poshoongalele shonghalafano, shopapolitika opo tapu popiwa omakanghameno epangelo: taa popilwa ile taa amenwa, taa pewa oushima, taa kunda-fanwa; ile oshoongalele shoalongwa ile ovalihongi va ongala nediladilo okuhongwa ile okupopifwa kuMaxuilili-inashi pitikwa.

(Advertiser)

OMUKWETU

Oye oshifo shOngeleka Onkwaevangeli paLuther yomOwambokavango.

Oha nyanyangidhwa mOshinyanyangidho shOngeleka mOniipa.

Omukuluntu gwOmukwetu omumbisofi dr. Leonard Auala.

Amushanga gwOmukwetu omulongi Ambrosius W. Amutenja.

Ondando yOmukwetu komumvo, muAfrika R 2-00, kombanda yomafuta R 4-00.

Omambesitelo pamwe noondando naga tumwe ko-mukwetu Oniipa, P/B. 2013 Ondangwa 9270

OWAMBOKAVANGO CHURCH PRESS
ONIIPA P/BAG 2013 ONDANGWA 9270