

OMUKWETU

Registered at the General Post Office as a Newspaper

10c

Oshike tashi eta uunkundi maagundjuka, okugongala poohapu dhaKalunga?

"Halwindji muuyuni aagundjuka taya popilwa muuwanawa. Ihe Ombimbeli otayi popile aagundjuka muuwanawa," osho omulongi gwethimbo ele mosikola yaNgwediva ye oku li wo omusilishimpwiyo gwopambepo gwaagundjuka moosikola, Apollos Kaulinge a holola.

Omusitagongalo Kaulinge okwa tseyikila unene omolwehangano lyAailongi Aakriste (SCM), moka e li omukuluntu gwalyo. Omulumentu nguka a simana mokati kaalongwa okwaahokwa kwaagundjuka poohapu dhaKalunga ine shi tala owala oshinima shokombinga yaagundjuka ayeke, ihe nokaavuthili wo yaagundjuka.



Tani mu tjangere one vamatigara, yeeyi mwa funda Mudona. Tani mu tjangere one vanona, yeeyi mwa diva Guhyeni. Ame tani mu tjangere one vamatigara, yeeyi mwa kara nononkondo; ado nonkango daKarunga hena da kara mweni, yiyo mwa funda Mudona, 1 Joh.2:13b,14a,c.

Konyala akuhe muuyuni, aagundjuka, moka mwa kwatelelwa aailongi, itaya popilwa muuwanawa. Ihe Ombimbeli otayi popile aagundjuka muuwanawa. "One aagundjuka, ngame otandi mu shangele, oshoka one aana-nkondo nOhapu yaKalunga hayi kala mune ihe omwa sindi uuwinayi," 1John.2:13c,14c.

Aailongi yepatudho lyopakriste otaa holola wo kutya ethimbo lyuugundjuka olyo ethimbo ewanawa okutaamba iinima yopambepo. Otaa holola kutya aagundjuka mboka ya ningooitaali yashili methimbo lyuugundjuka wawo, ohaa ka kala ye na eitaalo lya kola monkalamwenyo yawo.

Masiku hamale ga piti po, omugundjuka gumwe okwa tumbula ta ti: "Omuuvithi ngandi manga ta yi koshuuvithilo, onda tseya nale euviitho lye, oshoka aluhe ondjonona yevalo lyaJesus, iikumithalanga ye neso lye komushigakano. Kape na nee mbudhi kutya okwa lesa otekisti yini."

Mbika ayihe otayi koleke kutya okwa na ehalo kwaagundjuka okugongala poohapu dhaKalunga, okwa fa kwa na etameko kuyo, ihe okutse, aavuthi. Omolwa sho ngele ongeyi oshipopiwa shika inashi opala okupopiwa komuuvithi, ihe ando okomugundjuka komeho gaavuthi, opo tu tseye omapuko nomauunkundi getu, tse tu ilonge mugo.

Osha yelela nawa kehe gumwe gwomutse kutya, omuntu ngele ke na ehalo lyiikulya, otashi ti omuntu ngoka ota alukwa, ke li nawa. Shika osho ekonakono ewanawa lyuunkundi nenge lyuundjolowele wetu palutu. Kokutya omugundjuka ngele okwa nika uuunkundi palutu, ote shi ndhindhilike notashi ndhindhilikwa keholoko lye koshililo. Elalakanolokugongala poohapu dhaKalunga olyo okupaluthwa pambepo.

Tala kep. 4

MPOKA ELAGO LYOSHIGWANA HASHI LESHA TALI ADHIKA

(*Omumvo gwomambo*)

Okulesha okwo epya ihaali theta. Ye gumwe ta ti "opena oyi vule uuprofeti." Ano shoka sha nyolwa oshi vule shoka inaashi nyolwa. Omuleshi nomunyoli oya fa ekuvu nela ku vulu naanaa oku ya topola nuupu.. Oshoka maaleshi omo hamu zi aanyoli, ko kaku na omunyoli ihaa lesa. Ano okulesha nopena yi vule uuprofeti otai ende pamwe nomomumvo gwomambo mu ELOK.

Mokutala kashona ondjokonona ya ELOK, otatu dhimbulula nkene embo lyotangotango mOshindonga lya nyolwa komutumwa konima yoomvula 100 dha piti. Okuza mpoka pwa holoka eitulomo enene maatumwa mbo ya landula ko melaka lyOshindonga sigo she ya maavalelwamo yoyene wo.

Momumvo nguka gwomambo onda hala tu gu dhane nokutala shoka she tu zile mokulesha natashi ke tu zila mokulesha natango. Ngaashi nda ti nale, kutya okulesha okwo epya ihaali theta osho lela! Okulesha inaku fa ehokololo to li hokololelwa owala kokana pethimbo ndyoka nomuhokololi gwalyo e ta yi. Ano okulesha kaku shi oongano ndhoka hadhi tsuwa owala pohungi uusiku, ihe akwo oshinima moka to likola mo uuyamba wopaati; ano welaka lyolyene u mone omulyo gwalyo, oshitiyati uuyamba waashoka to lesa, opo shi ku tunge ngele to lesa iileshomwa iiwanawa mbyo tayi vulu oku ku tunga!

Natu tale kashona shoka okulesha taku etele omuntu nenge oshigwana, ano ongushu yokulesha.

(i) Mokulesha omuntu oti ilongo elaka ndyoka ta lesa - e li tseye opo a vule oku li shanga noku li popya nawa. Sha hala okutya mokulesha omo tamu tu zile aanyoli yomambo ngaashi nda tumbula nale petameko nda tile okulesha nokunyola okwa fa ekuvu nela katu vulu oku yi topola.

(ii) Mokulesha omuntu oti ilikolele uuyamba washombo u li moshinyolwa sho ta lesa-okulesha ku mu tunge ku mu ninge omuntu omudhiladhili, omukonakoni gwaashoka shi li mondjila naashoka sha puka. Mokulesha omuntu opo ta vulu okuyoolola shoka shi li mondjila naashoka shaa li mondjila.

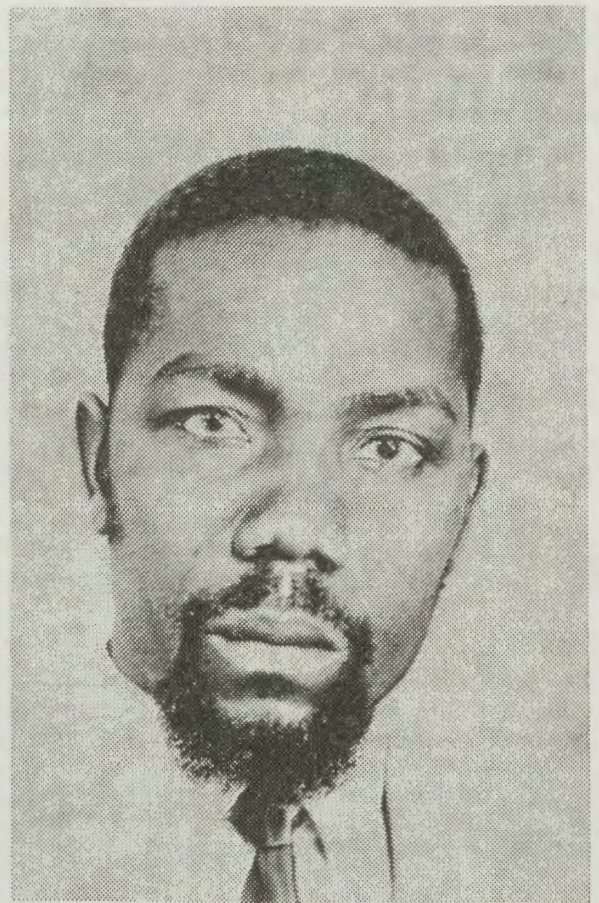
(iii) Okulesha otaku kwatakanitha omuntu niiningwanima yonale. Ondjokonona (ehistoli) lyoshigwana kehe, lyOngeleka, lyaantu yontumba mboka ya longa sha shomupondo nenge aanyoli yomambo nokuli, ayihe mbika otayi zi mokulesha. Sha hala kutya okulesha otaku yambapaleke omuleshi miinima oyindji. Omuleshi ota kala mekwatathano aluhe nuuyuni wopondje, ta tseye shoka tashi ningwa nosha ningwa nale. Mokulesha omuntu oti itsu o-mayamukulo ogendji gomapulo ngoka ga adhika inaaga yamukulwa. Omuleshi ita thi-

gala po, ihe ote ende pamwe nethimbo, otu uvu ko nawa omadhiladhilo gayakwawo sho ta lesa iinyolwa yawo e ta tameke okuyelekanitha naashoka ye e li miinima yi li noyi ili.

Omuleshi oto vulu okukundathana naye iinima yomaludhi ogendji ngele yopambepo ngele oha lesa oohapu dhaKalunga, ngele yopapolitika ngele yopaunongononi yopaunshittwe, yopandjokonona nosho tuu. Sha hala okutya omuleshi okwa kwata onkalamwenyo ayihe. Oshoka kehe shoka tashi holoka onkalamwenyo yomuntu noyiishitwa, oto shi tsakaneeke owala mokulesha.

Oshigwana oshileshi osha fa epya ihaali theta ngaashi nda tumbula nale petameko. Nomomumvo nguka gwOmambo otwa gwana okuhambelela Kalunga sho tatu vulu okutoola omauyamba moombinga dhi ili nodhi ili ngele mumbyoka yopambepo nenge mumbyoka yopaunongononi umwe wi ili, mbyoka tatu pumbwa wo ontseyo onene muyo omanga tu li kevi ndika. Uunongo nowino woludhi kehe otatu tu zile owala mokulesha iinyolwa mbyoka tayi tungu omuntu.

F.A. Iihuhwa



Omusamane Johannes Kambungu ngoka a gongelele oshilongatumo mu ELOK oo-R270,00. Mefatululo ndyoka a gandja aniwa iimaliwa mbika okwe yi gongele momahala ngaka: Oliindili, Owambo, Marinta, Rehoboto nomOvenduka. "Otandi halele ayehe mboka ya gandja omagano, omayambeko gaKalunga," osho tate Kambungu a ti.

Uukwatya tau opalele ehupitho

Mat.16:24-27

Ngele ku na ngoka, a hala okulandula ndje, oye ni idhimbwe ye mwene, ni itsike omushigakano gwe, ye na landule ndje.

Oku na omupopyo tagu ti: Omulilo gwongula opeha lyoye. Tashi ti kutya omuntu ou na okukambadhala ngaashi tashi vulika, opo u iningile uuwanawa. Ihe etumbulo ndika olya fa kaali na mo eha moteksti ndjika.

Omukriste ota pulwa iinima itatu: okwiidhimbwa ye mwene, okulandula Jesus nokwiitsika omushigakano gwaJesus, ov.24.

Mpaka Jesus okwa hala oku tu longa kutya inaku kala nando oshimwe kombanda yevi tu shi hole shi mu vule. Omuyapostoli Paulus ote shi fatulula nawa sho ta ti: Olye ano te tu topola ko kohole yaKristus? Uudhigu ando tau shi ningi, nenge oothina nenge etidhagano, ondjala nenge oluhepo, oshiponga nenge eso?, Rom.8:35.

Jesus ina patana kutya omuntu ita vulu okukala e li nawa kombanda yevi ngele ke na Kalunga. Ota vulu okukala omuyamba, e na ukolele, iinima tayi ende nawa. Ihe nantango ota pula: Oshoka otashi kwatha shike, omuntu nando ni ilikolele uuyuni auhe, ye ta kanitha omwenyo gwe? ov.26.

Uuna omukithi nenge oshiponga shontumba sha adha omuntu noondohotola otadhi ya paithano, opo dhi kwathe omuntu ngoka ngaashi e dhi inekela. Konima oondohotola ndhika ngele dha nyengwa oto uvu sho tadhi ti: Ekwatho lyetu itali ti we sha, ihe otatu mu gandja owala miikaha yaKalunga. Eto mpelo kutya onkalamwenyo yomuntu otayi uthwa kuKalunga-Oye e li oshitsa shopokati.

Jesus oku shi shi wo kutya otwa pumbwa iikulya, omizalo-omahupilo ge li nawa. Onke ota ti: Ho yeni oku shi shi nale shoka mwa pumbwa, manga inaamu mu indila, Mat.6:8b.

Molwaasho onkalamwenyo yomuntu itayi mbilipalekwa owala kiinima yokombanda onkene Jesus ota gwedha ko ta ti: Tangotango kongeni Oshilongo shaKalunga nuuyuki we, nena mbika ayihe otamu yi gwedhelwako.

Mwaayihe Jesus te yi popi okwa hala aantu yi ilongekidhile eyo lye etiyali, moka te ke ya mesimano pamwe naayengeli Ye, hangaashi we omukwiilongo, opo a dhenge kehe gumwe okati koonyala, shi thihe pwaashoka i ilongela. Epangulo ndyoka itali ka vulika okuyiwa ontuku nando okulye, Mat.25:31-46.

A. W. Amutenja

Okuvulika kepangelo paMbi- mbeli otashi ti ngiini?

(Etsikilo)

Epangelo lya za kuKalunga itali vulu nande okugeela omuntu ta popile uuthemba we nenge womuntu omukwawo, oshoka omuntu ngoka ta ningi ngaaka ota ningi naanaa shoka shi na okuningwa kepangelo ndyoka.

Omukriste na vulike ano kepangelo ndyoka itaali tala koludhi nenge kolwaala lwomuntu. Kalunga okwa shita omuntu ina shita olwaala. Olwaala olu li po omolwomuntu, omuntu haye e li po molwolwaala. Shoka shi holike kuKalunga omuntu. Megulu omu na aantu yaKalunga, ngaashi wo kombanda yevi ku na aantu yaKalunga. Kalunga okwa gandja epangelo komuntu li kale po molwomuntu.

Epangelo nali longe ano shoka sha opalela omuntu gwaKalunga. Omuntu gwaKalunga oye taka ya megulu, ihe epangelo lyomuntu itali ka tsikila we megulu. Epangelo nali longe ano mokutula Kalunga lyo nali koneke kutya Kalunga okwe li pitikile eyakulo lyokuyakula omuntu gwe, manga e li kombanda yevi. Omuntu kehe na vulike ano kepangelo ndyoka e li pewa kuKalunga li mu yakule.

Omolwuwinayi nuulunde womuntu, epangelo olya uthwa li kale kombanda yevi tali kandeke uuwinayi waaha longwe komuntu. Epangelo ewanawa nolyombili oyo epangelo wo lya halika kuKalunga. Epangelo tali piyaganeke ombili nuwanawa mokati kaantu, itaali popile uuthemba womuntu; epangelo lya tya ngaaka olyopantu notali gwanitha ehalo lyomuntu, halyaKalunga nande.

Ngele tse aakriste tatu tsakaneke epangelo lya tya ngaaka tu landuleni ano oshiholelwa shaayapostoli sho taa ti: "Ote otu na okuvulika kuKalunga, hakaantu (Iil.5:29)."

Ongeleka nepangelo oyo aantu namumwayina. Ongeleka otayi longo muuyuni mbuka wa yonana yi kwathe omuntu omwiinayi komwenyo a ninge omuntu omwaanawa komwenyo ngoka ta vulu okulongela yakwawo uuwanawa. Manga epangelo tali longitha oonkondo, opo li vulikithe omuntu omwiinayi a kale ta longo uuwanawa, Ongeleka otayi longitha ohapu yaKalunga nehungomwenyo, opo omuntu a lundulule omadhiladhilo gomwenyo gwe omawinayi ye a tameke okukala okupe taku etele aantu aakwawo elago.

Epangelo otali putudha omuntu kolutu, ihe Ongeleka otayi putudha omuntu komwenyo, ihe elalakano lyOngeleka nepangelo mokuputudha omuntu limwe alike: omuntu a kale omwaanawa.

Tala kep. 5

Okwaagongala kwaagundjuka poohapu dhaKalunga

Dha za kep. 1

Onkee oshili ndjika otayi gumu wo kombinga yopambepo. Sha hala okutya, ngaashi okwa hala iikulya kwomugundjuka taku holola uunkundi we wopalutu u mu na, osho wo ehala lye lyokwaagongala poohapu dhaKalunga, tali holola okwaali nawa kwe kwopambepo.

Aakriste oye na ontseyo yehupitho lyawo noyi itaala kutya Kristus okwa kulila wuntu wawo auhe, oshiholelwa: **oondunge, omwenyo nombepo.**

Ngele ou na etompelo mushika, nena opo owala to vulu okuuva ko oshili nondilo yetumbulo lyaJesus sho ta ti: "Omuntu ita kala e na omwenyo koshikwiila ashike, ihe okukehe ohapu tayi zi mokana kaKalunga" (Mat.4:4).

OSHILILO OWANDAHA UUNONGO

Ngele omugundjuka u uvu ko ekulilo, ehupitho lye, nena ita palutha owala ombinga yimwe yuwuntu we, oshiholelwa: olutu, ombepo noondunge oshoka ota "kambele", ita kala pa "normal". Oshoka ehupitho olya kwatela mo wuntu auhe, oombinga adhihe odhi na okusilwa oshimpwiyu omolwuundjolowele wuwuntu womuntu auhe.

Ngaashi uundjolowele wopalutu tau uthwa koludhi lwiikulya mbyoka omuntu ta li nokene te yi li, osho wo uundjolowele wopambepo wu li.

Jesus oye mwene a gandja eyele kushika: Luk.8:4-8, 11-15. Mpaka ope na oongundu ne (4) dhaapulakeni poohapu dhaKalunga.

- * Omuntu ta pulakene, ihe ta tindi okutaamba, Ov.11-12.
- * Omuntu ta pulakene nota taamba nuupu, ihe okombanda, kape na omidhi (Ov.13).
- * Omuntu ta pulakene nota taamba, ihe ponto oku na iiholikenima yilwe, Ov.14.
- * Omuntu ta pulakene, nota taamba nota vulika koohapu dhaKalunga, Ov.15.

Mpaka ondi na eyamukulo lyu ukilila, kutya uunkundi waagundjuka mokugongala poohapu dhaKalunga, otau zi mpaka ngele otaa pundukile moongundu ndhika **ndatu** dhotango.

Mokutalulula ongundu nongundu, ondi uvite osho elago lyomugundjuka ngele ta dhimbulula ogwomongundu yini.

1. Ongundu tayi leshe nenge tayi pulakene oohapu dhaKalunga ihe tayi tindi okutaamba. Mpaka nando ohapu yaKalunga tayi tsana notayi tompele omuntu ngoka oshili yehupitho lye nenge uulunde, omuntu ina hala okutaamba oshili ndjoka. Oondunge dhe nomadhiladhilo ge ote ga edhile po thilu.

Uuntsa, owo umwe ta vulu okuhilila omugundjuka mongundu ndjika e ta edhile po omadhiladhilo ge kohapu yaKalunga nota kala momilema.

2. Ongundu tayi pulakene notayi taamba nuupu, ihe omiinima yokombanda.

Uukriste waa na omidhi meitaalo nomontseyo yehupitho otau monika unene maakriste yomethimbo ndika. Uukriste nando tau monika kombanda, itau tameke kombanda, ihe otau tameke meni muule womwenyo gwomuntu. Mongundu ndjika uukriste owo iinima yokombanda.

Eputuko lyAaeuropa:

1. omizalo
2. eilongo
3. oondjigilile dhontumba
4. iilonga yontumba
5. omikalo omiwanawa

Shika osha yela nawa kutya "uukriste" wolidhi nduka esiku lyemakelo otau nyengwa okusindana. Omugundjuka ngele oku na uukriste kaau na omidhi miinima yokombanda, eitaalo lye itali vulu okuthikamena omasheko nomaudhigu omolweitaalo.

Uukriste kau shi eiuvo, etompelo tali zi mokutaamba ohapu yaKalunga noetompelo ndika otu na okukonga omalalakano, sigo tatu vulu okuholola uukriste wetu monkalo yesiku kehe, twaa na uumbanda nohoni.

3. Ongundu tayi pulakene notayi taamba ihe ponto opu na natango iihokiwani yimwe.

Omugundjuka gwomongundu ndjika, okwa taamba uukriste, ihe pamwe nawo iihokiwani ma ye yilwe. Ota li oompanda mbali. Otashi vulika iihokiwani ma ye mbyoka, ya kwatelela mumwe nuukriste, yi kale kaayi shi iwinayi, ihe iwanawa, ya pumbiwa noyi na ondilo monkalamwenyo yoye.

Ngaashi Aaingilisa taa ti: "The worst enemy of the best is the second best".

Mpaka otandi tumbula iiholelwa iyali:

Eilongo: oyo ewanawa, ihe omwiilongi omukriste ngele oti impwiyike neilongo ethimbo alihe, nopwaa na ethimbo lyegalikano, okulesha Ombimbeli okugongala muungundumbimbeli nomomalongelokalunga, nena eilongo lye otali ningi ondjo nenge oshikalunga shoka tashi undulile Kalunga poluha.

Ohole yokuhola evi - uupolitika: Aagundjuka yetu oyendji otaa hepekwa unene konkalo yopapolitika molwevi lyawo. Noyendji ya tula mo omadhiladhilo gawo noonkondo nomagalikano gawo nokuli: Ihe otaku ndhindhilikwa nkene uukriste neinekelokalunga lyaagundjuka yamwe tali sile oshimpwininika moshikungulu shika shomaudhigu guupolitika. Oyu uvite aniwa ohole yaKalunga kuyo onshona, Kalunga a fa kee na eyamukulo kuudhigu mboka ye u na.

4. ONGUNDU TAYI PULAKENE, TAYI TAAMBA NOTAYI YI MIILONGA

Mongundu ndjika oohapu dhaKalunga itadhi kala ehokololo membo, ihe oshili yaa shi okuyandwa noonkondo tadhi hupitha omuntu; naKristus ita kala Omuhupithi guuyuni, ihe ota kala Omuhupithi a taambwa kungame nokungoye. Uuna Kristus a ninga "oshili" komugundjuka, oku na okwiimika iiyimati.

Iiyimati mbika oya kwatelela mo okugongala poohapu dhaKalunga, oshoka okwo ombinga yelongelokalunga lyomukriste. Iiyimati mbika otayi zi meitaalo lyomuJesus tali sindana momamakelo nomoothina, itaa zimine "uuindividuele" mboka tau monika maagundjuka yamwe yokwiipoolola moongundu dhooitaali ooyakwetu. Ihe otu na okugongala, opo tu tsuwe omukumo, tse tu tse wo yakwetu omukumo.

b) Otatu uvithilwa onkalo yaJesus gwaLukas naPetrus, yaJesus gwandje nogwoye.

c) Otatu uvithilwa omikalo dhontumba, handjila nkene omuntu ta hupithwa.

Ihe nando ongaaka eyele lyomukuni olyo elondodho komuleshi kehe gwohapu yaKalunga nokomupulakeni kehe gwayo, opo "ngoka e na omakutsi gokuuva a uve ko".

Omunelago oongoka ta kala aluhe megalikano. "Tonatitha omeho gandje Omuwa ndi mone iikumitha yomiiipango yoye," Ps.119:18.

Omuwa ita kala inaa holola "iikumitha yomompango" kungoka he mu galikana nosho ngaaka tatu kala tu na "enota aluhe lyomahini nongele tatu ga nu otatu koko e tatu hupithwa," 1Petr.2:2.



Rev. Heikki Uushona, omusita gwaagundjuka mongeleka ya ELOK

UUNKUNDI WAAUVITHI

Omauvitho getu neputudho lyetu lyopakriste inali kwatelela mo uuntu auhe womuntu, oshiholelwa:

a) linima yopa "Sex" mbyoka yi li omukundu maagundjuka yetu notayi nkundipaleke eitaalo lyawo, otwa mwena. Ngele tatu mwena noitatu longo moshinima shika, ondeveli otayi ya longo. Nosha fa osho shi li po ngashingeyi.

OKUVULIKA KEPANGELO PAMBIMBELI

Dha za kep. 3

Petameko lyeshito Kalunga sho a tala uudhukudhuku tau longwa komuntu kombanda yeve okwi ipopile a ti: "Omadhiladhilo gomwenyo gwomuntu omiinayi hela uugundjuka we (1 Mose 8:21)." Kalunga ta popi a yemata shili. Ihe sho a dhimbulula omuntu a hepa ngawo komwenyo okwa tumu omwana Jesus a dhike Ongeleka kombanda yeve, opo aantu ayehe naamboka taa longo mepangelo ya kwathwe koomwenyo dhawo yo ya longe uuwanawa koshipala shaKalunga.

Eputudho lyOngeleka okuputudha omwenyo gwomuntu otali falitha omuntu mehupitho lyomegulu, ihe omuntu ngoka e na omwenyo gwa putudhwa nawa kOngeleka ota eta uuwanawa nelago mokati kaantu huka kombanda yeve nokuli. Oyendji sho ye etha okukala okuwinayi omolwoshilonga shOngeleka ndjoka ye ya fala meitedhululo.

Hayendji yi itedhulula sho ya dhengwa komalutu kepangelo, ihe oyi itedhulula sho ya dhengwa koomwenyo keuvitho lyOngeleka. Epangelo otali dhenge omuntu kolutu a kale omwaanawa huka kombanda yeve, ihe Ongeleka otayi dhenge omuntu komwenyo a kale omwaanawa muuyuni mbuka tau hulu po, ihe uuwanawa we otatu kalele sigo omuuyuni tau ya. Ongeleka kayi shi kudhinwa nande komupangeli.

Omuntu sho e na shili omwenyo omukukutu ha nyenge konyala naKalunga ngu e mu shita, Kalunga okwa tula po epangelo li kwathele Ongeleka mokulongitha oonkondo, opo aantu ya longe uuwanawa mboka tau lalakanenwa kOngeleka nokuuvitha kwayo. Epangelo olyo omupolosi gwaKalunga. Otashi ti ngiini mbela?

Tala kep. 6



Omundohotola Veli-Pekka Jääskelainen pamwe nomukulukadhi gwe Marja, omundohotola gwomayego, mboka ya shuna omasiku ngaka kOsoomi.

Tala elaleko lyawo pepandja mpaka.

Aavu yetu amuhe aaholike, mboka twe mu panga omimvo hamano, otwa hala oku mu laleka, oshoka ethimbo lya thikana tu shune koshilongo shetu. Otu uvite twa longo oomvula oombwanawa mokati keni. Okutwiinekela kweni okwe tu tsu omukumo, nando otwa nyengwa okupopya elaka lyeni nawa Otatu mu pandula.

Aanashilonga aape, Aawambo nAasoomi, taya ka longa peha lyetu otatu inekele Kalunga ote ke ya yambekela iilonga yawo, ngaashi a yambeke iilonga yoshipangelo shaNandjokwe esiku kehe.

linima ayihe otayiningwa molweni. Esilohenda lyaKalunga sha tali adha aantu oyendjiyendji, nena oku na wo oyendji mbaka taa ka hambelela nokusimaneka Kalunga," Kor.4:15.

Kalii po nawa
ooJääskelainen

OKUVULIKA KEPANGELO

Dha za kep. 5

Omuntu ngele ita vulika kOngeleka na iti itedhulula a ethe iilonga yuulunde noyuukolokoshi, Kalunga ota vulu okugandja omuntu ngoka miikaha yepangelo li mu geele noli mu haluthe noonkondo dhalyo, opo a vule okulundulula okukala kwe okuwinayi ye a longe shoka sha opalela Kalunga. Mpaka otatu mono kutya Ongeleka nepangelo oyo aakalele naapiya yaKalunga mokukwatha omuntu gwaKalunga huka kombanda yeve.

Omolvomaukwatya goopolitika dhi ili nodhi ili, otashi vulika moshilongo shontumba tamu kala epangelo inaali hala Ongeleka. Momapangelo ga tya ngaaka ohashi vulika mu na aakriste nokuli. Ngele ope na epangelo ndyoka inali za kuKalunga na kali lile po Kalunga. Epangelo ngele inali hala na otali tondo Ongeleka, nena osha yela kutya inali hala na otali tondo Kristus mwene gwOngeleka. Omukriste, kotokela okuvulika koondunge nokehalo lyepangelo lya tya ngaaka, oshoka kadhi shi oondunge nehala lyaKalunga.

Otu na eipulo enene mevi lyetu kutya otatu ka kala nepangelo lya tya ngiini? Epangelo lyaSuid-Afrika olya holola iiyimati yalyo mukuyakula evi ndika nomadhiladhilo ogendji oga hololwa nale kaakriste kombinga yepangelo ndika. Tse shoka tuna okuninga oku-

galikana owala Kalunga ketu e tu pe epangelo ndyoka tali ka tsikila oku tu lela tse tu ka vulike kulyo ngaashi twa kala noku shi ningila epangelo lyaSuid Afrika.

Kalunga na sile oshigwana shetu ohenda e shi pe epangelo hali mu tila shili lyo lya simaneka uuwanawa nuuthemba womuntu kehe mevi ndika Namibia.

OSHITUTHI SHOMAMBO NOMISSIONI OSHA HEDHA POPEPI (9-10 JULI 1977) MOSHINYANYANGIDHO OTAMU NINGWA OMALONGEKIDHO OMANENE OMOLWOMAMBO GO-SHITUTHI SHOKA. OMWA TI KOMANDONGO-KOLUKONDA TAKU KA KALA SHA HO!

OSHIGONGI SHA LWF

Aantu ye thike 800 moka mu na aakalelipo yOngeleka osho wo aagandjindunge otaya ka kala mOshigongi oshitihamano shOngongahangano yAakwaluther muTanzania, okuza 13-26 Juni 1977. Otamu ka kala wo aaniifo 125. Ongeleka yetu oya tuma ko wo aatuma mwa yayo, moka mu na omumbisofi Auala.

1. Omukundu wedu letu
 Wa nyengana kupondola
 Owa li ku kundafanwa
 Wa li kukondjiwa nao
 Fiy' eedula tadi pu
 Efimbo tali tondoka
 Ovayandji veendunge tava kulupa
 Odjuulufi yoshiwana emanguluko

2. OoCarpio va endele
 Waldheim veu yile
 Escher naye omo a li omu
 Ndel' ovanhu tava popi
 Omaudjuu taa yandjw' omilongelo
 Ndele eendjato tadi i konautuwe
 Ounyuni tau kundana
 Odjuulufi yoshiwana emanguluko

3. Ohofa younyuni ya ile mo
 Oiwana ya hangana ya tokola
 Oukumwe waAfrika wa popile
 Ongudu yEameno ya lombwela
 Ondjindikila yoipindi ya popiwa
 Ovawambo va dile mo moilonga
 Oudjuu owa anya kupondoka
 Odjuulufi yoshiwana emanguluko

4. Ovapolotika tava popi
 Ovawiliki tava yandj' omatomhelo
 Oshiwana tashi kwatwa
 Ovanhu tava pi komalusheno
 Omapokolo taa popi taku ti twaya
 Ndele eengudu tadi i
 Omangungo taa di mo moshilongo
 Odjuulufi yoshiwana emanguluko

5. Omaduumbo okwa nyengwa
 Okatongotongo oka dopa
 Eengeleka da popile
 Ovawiliki veengeleka va shangele
 Oudjuu wonghalafano va twala kovapangeli
 Ndel' outondwe tau ya
 Omayandjo oushima taa duka
 Odjuulufi yoshiwana emanguluko

6. Omalombwelo okwa yandjwa
 Ovatumwa tava tewa mo
 Ovahongi tava di mo ngholongholo
 Eengeleka tadi ulwa
 Ovawiliki veengeleka tava yaiwa
 Omukundu tau anye
 Oshiwana sha kwatwa kelimbililo
 Odjuulufi yoshiwana emanguluko

7. Otu li mefimbo lidjuu
 Leefitola tadi xwikwa
 Omaumbo taa tomekw' omundilo
 Ovanhu tava file dahamungheya
 Ovafita tava kwatwa
 Ovahongi novayakuli tava ka lya momatete
 Oudjuu tau anye kupondoka
 Odjuulufi yoshiwana emanguluko

8. Opa ningwa nombungalelo
 I li moTurnhalle
 Okatongotongo ka felwe
 Omaduumbo a fudikwe
 Oufikepamwe u dalwe
 Onghalo iwa i holoke
 Omahalo oshiwana a wanifwe
 Odjuulufi yoshiwana emanguluko

9. Ombungalelo yaTurnhalle
 Oya kala moipundi
 Eenghundafana oda iwa
 Omafaneko okwa yandjwa
 Omatokolo okwa ningwa
 Efanekoveta ola pwa
 Ounyuni owa lombwelwa
 Odjuulufi yoshiwana emanguluko

10. Ombungalelo yaTurnhalle
 Vanwe otave i tange
 Vakwao tave i yembe
 Kuvamwe oyo efindano
 Ndele kuvakwao oshimha
 Enyamukulo kepulo eli
 Onakwiiwa i li shii
 Odjuulufi yoshiwana emanguluko

Naiti

EEMILIYONA 800 KAVE SHII OKULESHA

Onghendabala oyo ya ningwa meedula da pita kOilongo ihapu yomounyuni, okududa mo okuheshikulesha inai pondola mokuninipika omuvalu waavo vehe shii kulesha. Oku na nantango ovanhu ve dule peemiliyona 800, unene ovakulunhu, ovo vehe shii okulesha.

Pahokololo olo la nyanyangidwa muBritania kOkomitiye yOunamambo moilongo 20; eepelesenda di dule 90 dovakalimo, kave shii kulesha. Unene moilongo omo mu na onghendabala inini mokukondjifa omukundu ou, omuvalu waavo vehe shii kulesha ou li pombada neenghono.

Omuvalu ou momadu e lili noku lili otau tengenekelwa peemiliyona edi: 40 muLatin America 50 mOilongo yOvaarabia, 143 muAfrika no 500 muAsia.

Emanepo loupyakadi ou otali pula efimbo lile, osheshi omuvalu otau londo ashike omudo keshe. Naashi otashi etifwa kehapupalo lovanhu. Omolwoufyoona, oilongo imwe ihai dudu okuwanifa eefikola, ovahongi noikwafifo aische ya pumbiwa.

Ehokololo otali popile elongifo lomakwafu ngaashi okupwilikina nokutala, okuninga, okushiivifa nokutukula oinima yehongo noyokulesha.

Oluhepo loinima yokuhonga nokulesha olo unene tali kateke ekondjifo lokuheshokulesha.

PAMWE OMUKALELIPO GWAANDOWISHI OTA KA SHUNA

Epangelo lyaNdowishilanda lyUuninginino olya ninga etokolo, opo ombelewa yomukalelipo (consulate) gwAandowishi mOvenduka yi pate. Esiku lyepato inali tseyithwa natango papangelo.

Omupehakalelipo gwAandowishi, omusamane Uwe Hansen, okwa holola kutya oshinima shika osha kala tashi kundathanwa wule womumvo.

Aniwa etokolo lyaNdowishilanda lyUuninginino lyokukutha mo omukalelipo gwalyo mOvenduka oshinima tashi ki ikwatelela unene kwaashoka sha monika momakonakono gokomisi ya VVO ndjaka ya hogololwa, ya thikama maakalelipo yaAmerika, Kanada, Britania, Franisa, naNdowishilanda lyUuninginino.

(Advertiser)

AALESHI TAA NYOLA

Jeremia Kristof mOshiwakopo ota pula ngeyi:

1. Omolwashike pe na aantu yamwe taya hokanithwa kumangestrata omanga yamwe taa hokana kongeleka, mboka ye li muukriste washili oyeni?

EYAMUKULO

Kandi shi wo oto dhiladhila ngiini noshinima shika "paukriste washili". Ngoka ta yi kumangestrata ndishi ina hala ondjokana yopangeleka. Kongeleka otatu mono ondjokana yopaveta nyopangeleka, ihe ukriste washili ito u mono mondjokana yamangestrata nenge yopangeleka, ukriste washili u konga mekwatathano lyomwenyo gwoye naKristus.

2. Ohandi uvu taku ti aniwa omumati na fute omukadhona oshoka okwe mu yono po, shika osha yelesa ndje. Ndele omolwashike omumati ngele a mono okanona noshikumbu ihaa futwa koshikumbu shoka osho she mu yona po?

EYAMUKULO:

Oshinima oshipe momakutsi gandje okuuva kutya omumati okwa yonwa po komukiintu na epulo ndika kali shi edhigu. Omumati oha futu ngoka e mu yona po omolwokanona nonkalo yomukiintu ya yonuka. Ngele owa hala okupula natango epulo ndika, pula omalenga nooyene yomikunda, u mone eyamukulo.

M. A. Ondangwa ota pula wo ngeyi: Omuntu otashi vulika ngaa a hengane, na onomatopelo geni te shi ningi?

EYAMUKULO:

Mombimbeli omwa shangwa kutya "mbaka yaali otaa ningi onyama yimwe", ishewe "shoka Kalunga e shi tula kumwe inashi kuthwa kumwe komuntu". Ano kape na nando omukanka gwontumba twe gu pewa tagu zimine eteyo lyondjokana, kakele shila shoka sha tumbulwa muMateus kutya "omoluukukutu woomwenyo". Ano kapu na ngoka e na uutheмба okutogonyona oshilyo shimwe kolutu. Ngele ando tu tye, oshiholelwa, oluhondelo ndoka lwa tumbulwa, nalwo wo pokati kondjokana otalu etwa po kokupwapo kwohole mondjokana.

Festus Ashipala

Oh, "Omukwetu" te eta elaka epelela nenge epuko, kepanja 8 sho ku li Lye ndongula olyo lya too lohimal

peha lya

Lye ende ongula, olyo lya toola ohimal nenge

Lye end' ongula, olyo lya tool' ohima

Nekundo
Toivo Tirronen

"Omukwetu" ota pandula aaleshi mboka haya lesa nokukoneka. Ano ou li mondjila lela tate Tirronen.
Amushanga

Ehala lya lyene oli li kondundu. Ngele to tala pevi oto mono omagumbo gAaluudhe-Aazulu. Ehala lya mwena tuu mboo. Ondoolopa ndjoka yi li popepi, STANGER, oyi li uule wookilometa 35, lwaampo, akuza mOkolindji.

Mosikola yo yene omu na aalongwa ye thike 55. Yamwe oya za kuRhodesia, Botswana, Namibia nosho wo komahala ogendji mu S. Afrika. Omu na aalongi (lecturers) yahtatu nomukuluntusikola (Rector). Omu na wo mboka taa longo iilonga yilwe. Ohamu popiwa omalaka 14. Ihe elongo otali longwa mOshiingilisa.

Aanamibia mboka ye li kuMapumulo oyo: Mr J. Sindano, Mr P. N. Henok, Mr Roger N.E. Kapofi, Mr L. Sedi, Mr J. Mtuleni, Mr J. Uugwanga, Mr V. Mnjika na Mr S.V.V. Nambala. Yaali yomuyo, Kalunga ngele e shi hala, otaa mana onkatulongo yawo (B.Theol.) nuumvo. Oyo ayeke yaali ye li momumvo gwahugunina mongundu ndjika, mosikola ayihe. Kali shi elago lyAanamibia ndyono?

Otatu indile twa mana mo kwaayehe, opo mu tu dhimbulukwe momagalikano geni, Kalunga e tu kwathe tu pite tse tu ka yakule oshigwana shetu nevi lyetu noshaa mpoka Kalunga te ke tu tumina po.

Hakutya nde shi adha ando, nenge nda gwana, aawe. Otandi shi matukile ndi shi adhe, oshoka ngame nda adhika kuKristus Jesus, Fil. 3:12.

Otatu mu kunditha mOmuwa nokulesha
1 Tes. 5:23-28.

S.V.V.Nambala

CCC

OMUKWETU

Oye oshifo shOngeleka Onkwaevangeli paLuther yomOwambokavango.

Oha nyanyangidhwa mOshinyanyangidho shOngeleka mOniipa.

Omukuluntu gwOmukwetu omumbisofi dr. Leonard Auala.

Amushanga gwOmukwetu omulongi Ambrosius W. Amutenja.

Ondando yOmukwetu komumvo, muAfrika R 2-00, kombanda yomafuta R 4-00.

Omambesitelo pamwe noondando naga tumwe kOmukwetu Oniipa, P/B. 2013 Ondangwa 9270

OWAMBOKAVANGO CHURCH PRESS
ONIIPA P/BAG 2013 ONDANGWA 9270