

OMUKWETU

Registered at the General Post Office as a Newspaper



Mboka oyo aakongindjilamati yotango mOshituthilangeko shawo sha nigwa eti 14/9/75 mOngeleka mOniipa. Etanga ndika olyo eti 13 mehangano lyaakongindjilamati mOwambo, oya nyanyukilwa ehanganano lya-wo.

Otashi ulike kutya iilonga yuukongindjilamati otayi humu komeho noonkondo, naamati ayehe oyuvite uuntsa okukala mehangano ndika.

OIVIKEMBIBELI MOKAVANGO

3.31.8.1975

PEHOVELO LA AGUSTE OVAEVANGELISTE VONGELEKA REV. E.ANGULA NA REV. N. H. SHINANA OVA HOVELA NOIVIKEMBIBELI MOKAVANGO, PAMWE NOKANGUNDU KOVAIMBI OUKADONA VANE, OVA TALELA PO OMAONGALO 5 AESHE MOSHITAYINGELEKA ESHI, NDELE OINIMA AISHE OYA ENDA NAWA.

Oshilonga shokuevangelifa osha hovela mOngeleka yetu efiku tuu olo nomomudo tuu oo eshi Ongeleka ya hoolola omubishopi wayo wotete onghee omudo 1963 itau dimbiwa nandenande mOngeleka ei, osheshi omo mwa ningwa oinonenima ei ivali: 1 Omufita Leonard Auala a hoololwa a kale omubishopi wotete wodalele yoshilongo. 2 Omufita Efraim Angula a hoololwa a kale omuudifi wongeleka aishe ongomuevangeliste wongeleka. Onghee omudo 1963 itau dimbiwa nande komapupi aa taa shikula.

Omushamane E. Angula ou a hovela oshilonga shokuevangelifa mOngeleka ei, okwa hangwa a longa nale efimbo lile mOngeleka a li omufita woshihakulilo mOnandjokwe fimbo a li omumati, nokwa longa kOntananga nokOlukonda, nodula ei a hoololwa omuevangeliste okwa hangwa omupashukili woshitayi shOndonga okwa longa omido 11 oye aeke, onghee oshoongaleleengeleka shomudo 1974 mOngwediva, osha tokola ovaevangeliste va kale vavali, opo oilonga i longwe nawa, nEpangelongeleka ola pewa oshisho opo li hoolole omuevangeliste omutivali nola ulika omufita N. H. Shinana, ou a li omufita nomulongi mEnongelo mEngela okuhovela 1962-1964 eshi a ninga omufita mEngela fiyo 1974 omo a hovela okuevangelifa. Fiyo opapa ohava ende pamwe mokuudifa kakele ashike nge tava i mOushimba, oha va ende va lambafana omolu oluhapo losheendifo noilongifo mokuevangelifa. Oha va longo pamwe noukadona 4 ovo hava imbi pefimbo lomaudifo, nova enda fiyo.nee okOkavango.

Oshivike shotete shaAguste, otwe shi hovela moMpungu, nande elaka loluKwangali olidjuu, oshilonga osha enda nawa meongalo eli, ovakriste ova kala tava ongala nodjuulufi unene momikunda, shaashi omikunda odi li kokule nongeleka. Luhapu momikunda ohatu hangetwa teelwa nehafo nonefimaneko. Opo otwa twikila ku Nkurenkuru oko twa mona vali epuniko laKalunga, ngaashi koMpungu. Mu Rupara namo ongashikwao, ovanhu ove tu hafela ngaashi hava hafele omulonga wavo Kavango. Otwa twikila kuMuplani, notwa ya fiyo omOshilando shEpangelo Rundu, akushe

otwa didilika kutya Omhepo yOmwene otai longo kwinya, osheshi nande ohatu nyengwa kelaka ngaashi Shinana ou a kala ta tololokelwa, inashi nyona po nande ehala lokupwilikina, ovanhu aveshe ovakulunhu nounona ove na ohokwe nehala lokupwilikina aveshe ove na exwamo. "Olweendo eli ola pameka omiya dekwatafano lopamhepo pokati kOwambo nOkavango" osho tate E. Angula a tonga meenghundafana.

Otwa koneka ovanyasha vetu eshi luhapu hava imbi pehovelo leudifo keshe, osha pendula yo ovanyasha vaKavango navo yo va kendabala okulonga sha notwa mona vahapu nghee va pendapala okwiimbila "Homba" Omwene. Omaimbilo ovanyasha vetu okwa pandula ovakriste venya nokwe va popifa unene, onghee omufita omunyasha Heikki Ausiku Mpungu okwa ti: "Omaudifo etu oo oifima, ndele omaimbilo ovanyasha vetu, oo omunghoka u li kumwe nombelela ha nevanda." Omufita Johannes Hambjuka Rundu okwa ti mokuyeleka eudifo nolwiimbo. "Ovaudifi ovafa ovadani omanyakwa tava dana, noukadona volwiimbo, ova fa tava pandula eemhandu nokwiimba pamukalo woshiAfrika."

Nafye oshe tu hafifa unene eshi twa mona ovakriste ve tu hafela nove tu tambula nombili. Ovavango ove hole unene okwiimba ndele ovo oshiwana hashi imbi nawa, nosha li she tu hafifa yo.

Eudifo levangeli ola talwa oshinima sha fimana unene nokwaava ihave uya ko, osheshi ovaKavango inava hala okuudifilwa ve li peekamba domanwino tashi dulika mOkavango u tulike ombako pokamba nokwiifana ovanhu komaudifo ngaashi hatu ningi alushe mOwambo, nge to shi ningi, ovanhu ponhele yokuu ya keifano lombako otava halakana ashike, fimbo mOwambo va hala. Ovavango ota va hafele okuudifilwa ponhele ye likalela, ovakriste moKavango otava monika ngaashi mOwambo ovanhu ve yadi omakondjo omeni okukondjela exupifo, nokukondjifa owii wopaafa, onghee vahapu momakundo avo otava ifana oivikembibeli i ninge omudo keshe moKavango, osheshi vo ove hole Ongeleka yavo noku i kondjela, onghee mokuuda eendjovo luhapu otava kongo yo omhito yeenghundafana, opo oinima yavo iyele. Katu na omalimbililo olweendo lwetu kOkavango kala li ongaho nande.

Omwenyo woukriste moKavango owa holoka yo mokuyandja eengalo omolu oshilonga sheudifo, nande omaongalo oku na ovanhu vanini vo vali ha aveshe hava holoka ovamwe-vamwe aveke, eengalo oda yandjwa nawa, novafita oveltula mo okutwa ovakriste omukumo. Eudifo letu inali tambulwa ashike meendjovo dongaho ndelenee omoilonga nomoshili.

OMWENE ITE TU EFA NGASHI OOMEME

Eshi osha yela kutya fye otu na Omwene oo e tu tonatela nomoudjuu oo we tu dingilila mefimbo eli tu li, Omwene ine tu shitila owii ndele ouwa tuu. Ngenge omunhu ta longifwa komutondi omunhu a tya ngaha ke li vali mondjila youyelele, osheshi satana oye omulongi woixuna kombada yedu mokati kovanhu.

Ovakriste fye ovana vaKalunga otwa teelwa tu kale oupafi mokati koixuna younyuni ou tu li muwo, ohatu pumbwa eetelelo, ohole, neitavelo lapama mefimbo eli lii. Keshe tuu oo e hole Omwene oye omona wemanguluko, meefina nomomaudjuu etu aeshe katu li mo atuke, ndele otu na Omwene omunaenghono di dule eenghono dovanhu, osheshi ye okwa finda eso lumwe aluke. Paife otu na shili okulipula nokwiindila Omwene e tu pe eenghono momafimbo aa e li ngaha, ohandi dimbulukwa eudifo lomubishofi wetu olo tali popi oshiwana shi lipule noiningwanima oyo tayi holoka paafa ngenge oi shi tuu okutunga sha.

"Fye otwa uda ko tate Omubishofi Kalunga ne ku pe omafiku male natango pufye". Omunhu keshe okwa shitwa efano laKalunga mwene, ndelenee vahapu otava nyengwa okuudako ondilo ei ya pakwa mo kuKalunga, shashi ova kungilwa oudiyo woipupulu yomutondi oyo tai tu ondubo nehalo lOmwene wetu Jesus Kristus.

Kaume omuholike ino kolwifwa koudiyo wefimbo olo tu li mo, osheshi mu ove omwa pakwa efano laKalunga onghee kala meitavelo eteelelo nomombili yaKalunga koye omunaenghono adishe ye oye tuu oo a shiva omafimbo noule womido ye ihe ku efa ngenge u li muye.
Teeleleni Meitavelo

X X X X X X

TWA PANDULA

Aanasikola Aakahao mboka mwa li mwe tu talele po mewiliko lya tate Mika llonga, tse Aashiwakopo otatu mu halele omayambeko gaKalunga miilonga yeni. Aakongindjila yuuyelele yomOshiwakopo otwe mu pandula unene sho mwa li mwe tu ningile oohungi oombwanawa.

"Ano ongiini? ondi na okugalikana nombepo yandje, nondi na okugalikana noondunge dhandje wo, ondi na okwiimba nombepo yandje, nondi na okwiimba noondunge dhandje wo." 1Kor.13:15.
Omuwiliki gwaagundjuka Gideon Itewa Swakopmund

EYAPULO LYAASITA AAPE

Aalongwasita mboka ya putudhilwa oshilonga shuusitagongalo mu Paulinum Otjimbingwe, ethimbo lyoomvula 4 otaa ka yapulilwa oshilonga shuusitagongalo esiku 2 lya Novemba 1975, mosikola yawo ya Paulinum Otjimbingwe Kalunga ngele te shi utha. Aakriste yomomagongalo agehe ga ELOK otaa hiywa oyo ya galikanene shituthi shaasitalongwa mbaka, shi kale sha yambekwa. Aalongwasita aa ELOK taa ka yapulwa oye li yatatu, Onesimus Shanyengange, Immanuel Hainghumbi na Josef Namutenya. Kalunga nahambelelwe sho ta tumu aluhe aalongi mepya lye.



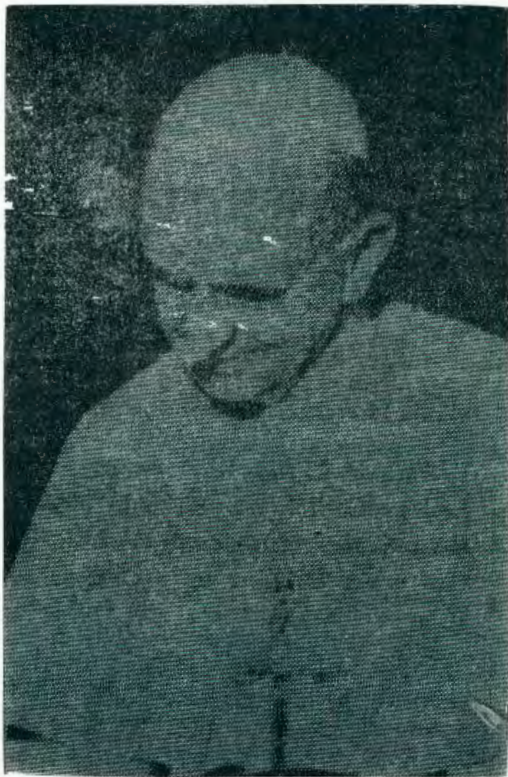
Omuudifi wevangeli Natanael Shinana oo a li a ya Komukuro

Oivikembibeli moKavango

Da dja kep. 2

Ndelenee shi li kOnghumbi osho ngoo shi li kEvale, nokutya omutondi wexupifo letu mOwambo nokoKavango oko e li ta longo a handuka unene, oye omhepo yodinokalunga oyo ihe na nando oshisho shexupifo lomwenyo. Vahapu ova ya neemhepo dounyuni ngaashi omOwambo, oukolwe nohole yemona ongashi omOwambo nomawii aeshe katu dulafane. Onghee ovaitaveli koKavango otava ehela elongelokumwe lovaitaveli, moku lidilika mawii aeshe, moku kala oupafi nokwiilikana, mokuteelela euyo lOmwene. Otava ti: "Tu kaleni alushe nokuhafela onghenda nohole yomwene no mefimbo leefina pehulilo laaishe Kristus oye omufindani neongalo laye itali ka tewa nande okoivelo yoheli." Osho va kundifa.

NATANAEL H. SHINANA



Omupapa Paulus VI

OMUMVO GWOMBILI

Omupresidente gwomoshilongo Panama okwa mangelula oonkwatwa oyendji koondholongo, sho euvitho lyomupapa Paulus VI lye mu hende ndjoka talj ti: "Omumvo nguka 1975 ogwo omumvo gwombili muuyuni" Omupresidente nguka oye wo omukriste omukatolika, pauvitho lyomupapa ye okwa holola ombili nejuvo ewanawa lyopakriste sho a gandjele oonkwatwa odhindji emanguluko.

Ando ngele tatu dhiladhila aapresidente, aakwanilwa naawiliki ando taa landula oshiholelwa shomulumentu nguka omuwiliki gwaPanama, andola aantu oyendji otaa mono enyanyu nombili ndjoka tayi pangele momumvo nguka 1975.

Mijlongo oyindji aantu otaa tulwa moodholongo sho omadhiladhilo gawo inaaga opalathana nepangelo ngashi lya hala, otaa tulwa moondhongo molwasho taa holola omadhiladhilo gawo inaa tila.

MuRusland nomuShina oonkwatwa oomiljona odhindji otaa longo taa thiminikwa momaudhigu omanene, oyendji taa si kondjala, yo oye li moodholongo sho inaaya hala okuninga aakomunisi okutya aatondi yaKalunga nuukriste, oya topolwa naakwanezimo yawo, ihe yamwe sigo okusa kwawo nokuli.

BANGLA DESH

Aavalelwamo yomoshilongo shika oya sindika kaaPakistani, omayuvi gomathele oya dhipagwa, aakulukadhi naakadhona oya longelwa jilonga iwinayi kaaMuhamendi muPakistani, ihe Aapakistani sho ya sindika aakiintu mbaka oya tidhwa po, inaya mona we ekwatho koshigwana shawo. Aakriste yomilongo oyindji oya tumine ekwatho kaakwanaluhepo mbaka muBangla Desh naantu mbaka ya monithwa jhuna okuya pa efudhitho nehekeleko muudhigu wawo mbaka ye li mo. Oosesitela otaa palutha aakwanaluhepo mbaka noku ya putudhila uunona wawo, oshiholelwa shoosesitela mbaka oshi shi

UHA PANDULA NOVAKE

Eshi osha hala okulombwela omupewi oo a pewa sha kutya, pandula oo eku pa sha. Pefimbo lokufu puJuni eshi ovanhu kwa li veli pyakidila nokuxwa oipale yavo, lo olo naanaa efimbo olo oshipale shomufitaongalo laNdola sha pyapo eshi sha xwikwa po kokanona manga ngoo inaamu xuwa nando ewi limwe. Oilya aisheshe okwa li ya lunguna po filufilu.

Efiku olo ovakwaneongalo okwa li va lotoka onghuwo opo va dime ngeno omundilo, ndelenee inapa xupa sha omundilo wa lafa. Eongalo ola tokola okuumba ongalo, nove shi ninga nomwenyo muwa, mongalo ei eumbo lomufitaongalo la fetwa omahondi eshi Pamba a lotoka onghuwo movaitaveli vaye, ovamwamengeleka eshi va yelula omake avo oku tu kwafela moshiponga eshi.

Eumbo lomufitaongalo mEndola otali pandula Kalunga ou a kamutulukifa omake ovaitaveli ovo va lotoka onghuwo ei yetu. Kalunga omunamwenyo na punike oilonga yeni aisheshe yopamhepo noyopalutu. Tangi unene twa pandula.

Eumbo lomufitaongalo

Endola

Eilikano lomufininikwa

Omaingido Epangelo enanghono olo we tu lombwela fye oshiwana shoye, tu du-like kulo, okwe tu halukifa. Ongelombwelo la lombwelwa Omukulili wetu komushiakano molwomanyono etu, "Ne likwafe ye mwene." Tate yetu, oshiwana shoye otashi twikifwa neendjovo dihee na eenghono, "Kalunga keni ne mu kwafe." Heeno, otwa itavela nehafo nomukumo momaudjuu etu pefimbo eli, kutya oto tu kwafa Kalunga ketu.

Oiwana yoye medu eli limwe, ovafitiki voshili novakondjeli voshili, eengudu edi ohatu di yandje koshipala shoye, Kalunga ou u li Omushiti wetu. Popya ponehele yetu Kalunga ketu, fye eehepele novadinwa notu li ovanyoni vomhango yoye. Omwene wetu tu fila onghenda.

Nd. Shilongo

okulandulwa, andola aantu oyendji taa inekelathana naantu ooyakwawo ando esilohenda lyopaukriste otali koleke aakwanaluhepo, mbaka ya kanitha etegameno lyawo lyopantu.

MUETIOPIA

Miilonga oyindji omu na aantu oyendji mbaka ye na uuvu woshilundu (uulepela) aakriste oyendji muuyuni auhe otaa kambadhala okutumina aavu yoshilundu omakwatho gopaimaliwa. iikulya nomiti, ihe oshinima oshinene momakwatho ngaka osho shika aakriste oyendji ohaa kala pamwe naavu yuulepela moku ya panga, shika osho tashi holola ohole yaJesus ndjoka tayi monika muyo, mokuyakula aantu mbaka. Oshiholelwa shika oshiwanaa kaakriste sho otashi etele aavu ehekeleko momauwehame gawo.

OMUKUNI

ONE EWI LYA NDJE

"ONGOKA TE MU UVU OTA UVU NDJE. NANGOKA TE MU EKELEHI OTE EKELEHI NDJE NANGOKA TE EKELEHI NDJE OYE TE EKELEHI NGUKA A TUMA NDJE." LUK.10:16.

Ethimbo lyoomvula dha piti otwa li twa uvu olundji kutya Ongeleka yaKristus oyo okana koombolo newi lyaamboka yaa na ewi." Moshilonga shika shongeleka otatu mono oonkondo dhayo, ngele tatu tala moohapu dhetu, nena otapu holoka ookwaatsu kumwe kutya Ongeleka oyo okana kaKalunga newi lyaKristus, ihe ayihe mbika iyali kai vulu okukala ya pengathana. Tse otatu vulu okugandja ekwatho kwaamboka ye li pumbwa, ngele twa uvu ewi lyaKalunga.

Kristus ota gandja uuthemba auhe kongelesa ye opo yi ninge okana ke newi lye moohapu dhe, nonando a tseya unkundi wetu ote tu pe oonkondo, oshoka oye mwene a ti kutya: "One okana kandje newi lyandje mokati kuuyuni mbuka." Oshoka oye iikwatakanitha natse nomuunkundi wetu.

Oshinakugwanithwa shika oshinene tashi pula oshindji kutse mboka aavithi yohapu yaKaluga mOngeleka ayihe, ngashi naanaa Jesus a tumine aalongwa ye muuyuni, osho wo natse tu na okweenda. Shika osho oshilonga shOngeleka okuninga okana kaKalunga newi lyaKristus, onkee ano kehe gumwe gwomutse okuna mo oshitopolwa moshinakugwanithwa shika, kehe gumwe okwa tseya nkene aantu hatu vulwa mbala nonkene hatu kanitha omukumo wo mbala.

Ngaashi naanaa aatumwa yotango otu na okupulakena noku uva ohapu yaKalunga, tu pulakeneni shoka ye mwene te tu lombwele, ihe ngele itatu shi ningi nena etumo lyetu itali ti sha osima yowala. Pulakeneni shoka Omuwa ta ti naashoka a hala okutya kaantu yomevi ndi monkalo yawo. Tse otu na uuthemba okukutha mo aantu muuwike nokuya pa ombili yaKaluga, mboka yaa na etegame no yaa na omukumo gwasha monkalamwenyo yawo. Kristus ota ti ngiini mokukala kwetu mevi ndika? Ha ye nani ngoka ha gandja einekelo mpoka lya pumbiwa nolya tegelelwa po nomukumo mpoka gwaa po.

Ongeleka oyi na oshilonga oshinene, nena ngele itayi shi gwanitha oye ta ka longa oshilonga shika? Shika osho oshilonga shayo lela okukala ewi lyaamboka yaa na uuthemba wopantu mevi ndika, nokupopya oshili mpoka pu na lifundja. Shampa tuu Kristus iikwatakanitha natse ina tu itala tse yene. Mpaka otu li momamakelo omadhigu okupingakanitha oohapu dhaKalunga niitya yetu

yene, Ongeleka oyi li memakelo edhigu okutaandelitha oonkondo dhayo nokulonga peha lyaKalunga, ongudhi yoonkondo dhayo oyo euvitho lyohapu yaKalunga.

Tse otu na oshisho okufala elaka lyaKalunga kaantu ayehe, ihe moshinakugwanithwa shika opuna oompito mbali: shampa tuu twi igandja kokwekelwahi kaantu, kokunyenkelwa, kokudhinwa nokokweehamekwa medhina lyOmuwa Kalunga, nena otatu vulu okulongitha oonkondo dhetu ndhoka twa pewa, ngele nani hasho ngawo, tse itatu vulu sha.

Kristus ote tu tumu tse Ongeleka ye okukala ewi lyaKalunga nomevi ndika wo, uuyuni otatu u longele uuwanawa ngele tse tu li okana newi lyaKalunga muKristus, ngele tu li ngeyi nena tse otatu vulu okuninga okana koombolo newi lyaamboka yaa na ewi. Amen.

(Ndika olya li ongeuvithofalomo lya ningwa komuwilikingeleka yaELK paku egulula oshigongi shEpagelongeleka).



Omuwilikingeleka Rev. Johannes
Lukas de Vries

Omhepo otai ka kala nokutululumukwa kombada yaye, Omhepo yeendunge noyoungongo, Omhepo yomayele noyee-nghono, Omhepo yeshiivo noyokutila Omwene. Jes.11;2.

ONHANDA YOVALUMENHU MONGWEDIVA

Ovalumenhu ovakriste vOngeleka yaE-LOK, ova li va ongala omafiku eshi a li 22-25/8/75 mOngwediva, monhanda omwa li ovalumenhu ve dulife 50 vedule oiongalele ikwao oyo hai ongala shito, eshi osha li shi hafifa unene eshi ovalumenhu ovakriste va dja keembinga neembinga daELOK va ongala opo va kundafane ondjovo yaKalunga.

Adam ou li peni?

Epulo eli otali pula omulumenhu kutya openi e li, oshike hano ta nyengwa okunyamukula apa e li na apaa ama. Omushiti woye ou eku na nokwe ku pa epangelo loinima aishe ota ti komulumenhu "OU LI PENI? Eenghundafana doshoongalele eshi oda li deli kwatelela komulumenhu tadi pula onhele yomulumenhu kutya ilipi po paife. "Ou li tuu omutwe shili ile hasho."

ELAO LEUMBO

Eumbo li nelao olo: Ovanhu ve na ombili, ohole, elididimikilafano, elinekelafano, ediminafanopo epukululafano, okudiinina ondjovo yaKalunga, oandaxa eilikano nefyuululafano inali mangwa koukwapata. Okutala efyuululo eli lopashiwana shetu olo hali ti omukainhu kefi omukwawo womulumenhu waye, eshi osho oshinima osho sha nyonauna po elao lomomaumbo.

Eumbo olo oshike hano?

Olutu lumwe olo la dika eumbo ola nginga yo epata limwe, hano omulumenhu nomukainhu ovo epata limwe. "Opo nee omunhu ta ti: Eshi ekipa lomomakipa ange nonhumba yomonhumba yange. Ye e nokulukwa omukainhu omulumenhu, oshe shi ye a kufwa momulumenhu." 1Mos. 2:23.

Omufyuululi olyelye hano, omudalwa ile omukwapata? Hano ngenge eumbo ola dikwa kovanhu ava vavali inatu va tuku la kumwe nena otu na oku shi udako nawa kutya eumbo nokeshe osho tashi monika kashi fi shovakwapata. Okutungwa eumbo okwo ndishi yo okwoongela eliko nokutambula omaano manene oludalo olo hatu li pewa kuKalunga. Moshongalele shinya ovalumenhu ova tokola va fyuululwe kovakainhu vavo nokoludalo. Ngashi keshe umwe e na oshisho sha kula okwoongelela eumbo lavo hasha nee omulumenhu ile omukulukadi, eshi otashi ti keshe umwe oku na oshitukulwa mefyuululo loinima yeumbo lavo.

OMUKAINHU OKU NA TUU ELIKO MEUMBO?

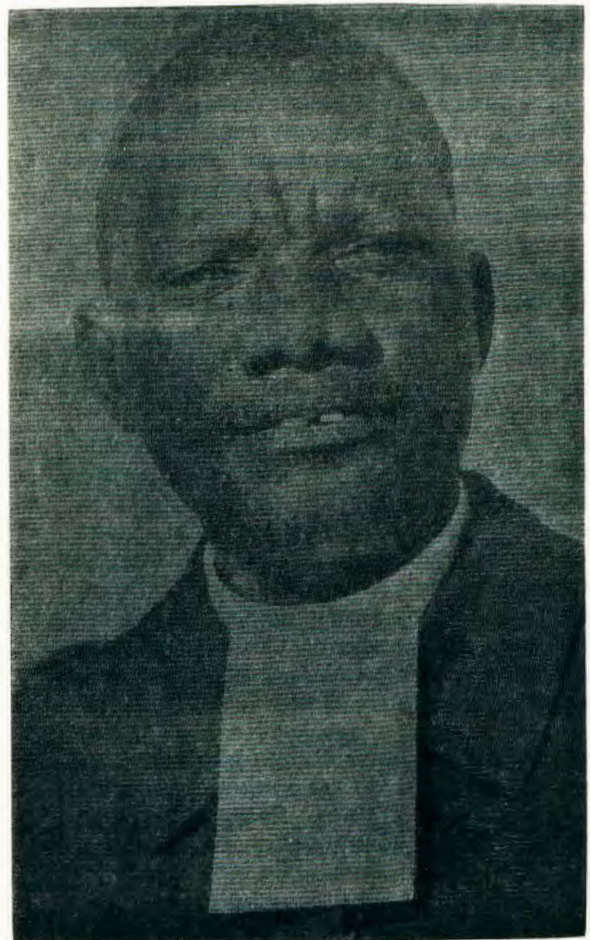
Eumbo olo li na omukainhu olo alike li na okukala neliko, manga olo lihe na omukainhu oihanuhanu yongaho, oshe-

shi omulumenhu nande nakale e na eliko lifike peni manga ehe na omukulukadi ashishe eshi ita shi ti sha, nokashi shi eumbo. Eshi oshi shi okuudika ko nawa kutya ovanhu vavali ngenge va ya melihombolo ova ninga ombelela yimwe omunhu umwe, ashishe osho ve kwete kashi shi vali shoukwapata, ndele emona leumbo lavo.

Ovakwapata ove na tuu hano okufyuulula?

Ope na omaliko oo a dja nale kooxekulu, oo okushi ku talwa nombinga youkwapata, ndelenee ei ya kongwa kwava vavali emona lavo vene noludalo lavo. Ovaitaveli ovakwetu tu taleni nawa moinima oyo yi shi okufyuululwa. Oshiongalele osha tala ngaha kutya oukwapata inau pangela vali ovanhu ngashi sha li hashi ningwa nale, ndelenee okuyakula nokulonga ouwa inamu ku efa.

Martin Shilongo



Omusitagongalo tate Malakia Alugongo Elim

Okuza Plita ijityali uyuyuni, iigwana oyindji oya manguluka ngaa kuupika wokulandathana naantu oyendji oya mono ethimbo ewanawa lyokwiilonga nokwiihumitha komeho. Ondjila yokuyambula po uunshitwe, omahupilo nuupolotika, nayo oya monika. Pethimbo ndyoka olwiho maanandunge nalwo olwiindjipala nosha vala ishewe upika uupe.

Onkalathano pokati kiigwana osho ya tsikile ngaaka okunayipala, uunene ndjoka yopokati komutiligane nomuluudhe. MuAmerika omwa penduka epapudhuko enene mokati kaaluudhe okukondjitha uupika uupe waatiligane.

Mwiya nando inapu kala etongolathano lyothiluthilu, aaluudhe oya liwa iipungo kaatiligane momayakulilo agehe gopaantu gesiku kehe. Esiku limwe omukulukadhi gumwe okwa dhengwa nayi eta falwa kaapolosi a mangwa, aniwa ina gandja oshipundi komutiligane mobesa. Osho ishewe sha ningilwe okakadhona kamwe okanasikola. Mbika iiningwanima yongashingeyi 1955.

Ethimba ndika muAmerika omwa adhika omugundjuka Martin Luther King, omuna gwaMartin Luther King, aapika yAayamerika. Okwa adhika a mana nokuli osikola yuusita. Iiningwanima mbika niikwawo oyindji yokonima oye mu tokolitha a ye mekondjo lyokutamaneka uulunde womonkalathano. Oshipotha oshinene sha pulandwa, aaluudhe kaye ende we manga moobesa okuya kijilonga yaatiligane. Oye sho a li po omusitagongalo, okwa ti: "Eitaalo ndyoka itaali ipula nolutu wo lwomuntu, ihe otali dhiladhila ashike omwenyo gwe, oloyo lya fa etutu tali yi ombepo. Itatu kondjitha oveta yoshilongo, tse itatu kondjitha iilonga yomayakulilo goobesa, ihe otatu pula ashike uuyuki mijilonga yayo. Moshipotha shika tu kumagidhathaneni kehe gumwe kutya:

Hamuntu wa gumu omutiligane kolutu. Kehe gumwe wilikwa keiuvo lyoye. Onkatu kehe nayi wilikwe keitaalo lyopakriste. Jesus ta ti: Hola omutondi gwoye, yambeka mboka taye ku sheke, galikanena mboka taye ku popi nayi. Ekunji nali hulithwe po.

Aantu yaMartin, osha li oshipu okuzimina, ihe osha li oshidhigu okugwanitha. Mpoka ya yi pondje yomusindalongo gwaMartin, Martin okwa ti nashi tulwe komapepe ge, a humbate ondjo ndjoka. Patekisti Ehol.21:16, moka Johannes a talithwa uthikepamwe woshilando Martin okwa tungile ko euvitho lye a ti:

Shono sha yona po uyuyuni, osho okwaathika pamwe kwiinima. Aagreka aantu aanandunge noye tu thigile uuthiga womanyolo nowomadhiladhilo, ihe iilando yawo ya simana oya tungilwa komukanka guupika. Eputuko lyilongo yuuninginino, nalyo wo enene sho lya vala oofabulika nuunkulungu wokufaneka, iinima mbyoka tayi etele ando omuntu egwano, ihe ngashingeyi ayihe mbika otayi longithwa muugoyoki nomokupangela yalwe. Amerika olya totele uyuyuni oveta yuuthemba womuntu, ihe naye wo aaluudhe ye 20 ml. okwe dhi yuga uuthemba auhe. Shika osho tashi ningwa ngashingeyi nokaawiliki oyendji yiilongo, otaa kongo shono shawo yene. Ometa yuuthikepamwe womwenyo oyo oonkondo dheputuko lyomuntu gwomeni. Konakona mungoye u tale shono wa shitiilwa, u shi ninge, ngoye wj igandje kusho oku shi longa. Moshilonga shoka shaa na ondjambi yasha, oto ki idhimbulula nkene tashi ku kutha mohole yokwiihola mwene. Naashoka osho ihe uule womwenyo gwomuntu.

Omata ontjyali yegwano lyomwenyo, oyo oshisho nomuntu omukweni. Okusimaneka uuntu womukweni noompumbwe dhe. Shika osho **olumbumbu** lwokukalamwenyo komuntu. Oku na ihe omata ontitatu, uule wopombanda. Yamwe yomutse otaa shuna monima kashona nakashona. Yo yamwe taa ningi aadhnikalunga miilonga yawo, nando pahapu dhawo oyo aalongoelikalunga aniwa. Omuntu oku na okuninga sha a konge Kalunga.

Okwiigandja kuJesus omuntu oto kwatakanjithwa wo miilonga ye iikumithi yomeitaalo. Ijilonga mbyoka oyo tayi ku fala montseyo yashili okutseya Kalunga. Ihola mwene, ngele nani sha pumbiwa, u tonatele uundjolowele woye, u kale wa kola. Shoka osho uule. Hola mukweni ngashi wi ihole mwene. Owa pewa oshipango okuninga ngaaka. Shoka osho uumbwalangandja wokukalamwenyo.

Ihe ino dhimbwa kutya oku na oshipango oshinene kombanda yaayihe: Hola Omuwa Kalunga koye, komutima gwoye aguhe, nokomwenyo gwoye aguhe, nokomadhiladhilo goye agehe. Shika osho ihe uule wopombanda. Manga inaa-tu adha oshilando shuuthikepamwe wa tya ngeyi, natse inatu ninga natango aana yaKalunga.

MARTIN OMUGALIKANI

Esiku limwe okwiile megumbo lye, a vulwa, a tekaukila nokwa kanitha omukumo. Okwa popitha omukulukadhi gwe noyana nokwa yi kelugo a ka konge ko okakopi kotee, a nwe. Okwa kuutumba mpeyaka ijitsa omutse kongolo noku-dhiladhila iiningwanima yesiku. Ohaluka nani ota galikana muile:

"Omuwa gwandje, onda landula ondjila ndjika sho nda li nda tala oyoshili. Oshigwana ashiihe shandje otashi ligamene ndje koshipala, ndi shi wjilike. Ihe otandi shi wilike ngiini, ngame nguka kandii na we oonkondo nomukumo? Oonkondo dhandje odha pu po thilu. Onda thiki sigo ompoka itee vulu we okutsikila ngame awike....."

Pethimbo oloyo tuu ndyoka Martin okwa dhimbulula oonkondo dha fa tadhil kuluka megulu tadhil mu siikile newi tali mu lombwele: "Martin, thikama, kondjela oshilj naKalunga okwe ku gama sigo aluhe."

Okwa zi po u uvite ota vulu okutsakaneka ihe shaashoka tashi ya. Inapu pita omasiku oge-ndji, emakelo edhigu olye mu tsakaneka shili. Opo e li po moshigongi oshinene nkene ye na okukondjitha uugoyoki womonkalathano, etango lyoshitangotoka, egumbo lye olya bomwa po noboma. Omukulukadhi nakanona kawo kamwe, omo ya adhika, ihe lago enene, inaa mona oshiponga sha sha. Oshigongi ashiihe oshe ya shi tale ompile tashi lili sho tashi tukana. Martin okwe ya gundjilike e te ya lombwele: "Naashika wo itatu shi yamukula nelongitho lyoonkondo, aawe. Dhimbulukweni oohapu dhaJesus sho a ti:

"Ngoka to kwata kegongamwele. Natango tuu tu kaleni tu hole aamwameme aatiligane. Kapu na mbudhi kutya otaye tu ningile shike, natu ya hololeleni mokanima kehe kutya otu ya hole. Uutondwe wawo auhe oku tu tonda, natu u taambeni nohole. Indeni mu ka lale nombili."

Gumwe gwomaapolisi ya adhika ye li poshiponga, oku uvika ta nongonene mukwawo ta ti: Andola hakaafala ndjono yomuyevangeliste, ando twe gwiilatha nena ndjika.

Yamwe yomaakwanegongalo oye mu etele opistolj ya kale nayo megumbo. Shoka okwe shi tindi. Osho wo ina pitika yi longithwe kungoka a tulwa po a langele egumbo lye. Oshoka ota ti, itayi tsu kumwe nejtaalo lye lyokwaalongitha oonkondo.

Omahepeko oga li taga koko nomasiku ge agehe oga fa ga li taga ende momilema. Pethimbo ndyoka okwa uvitha otekisti yoshipalanyolo shoshigongi shetu nena: **OHOLE OYI VULE AYIHE.** okwa ti:

(Olya hokololwa peha lyotundimbimbeli moshigongi shoshitayingeleka mOndonga eti 13-15.6.1975 mOniipa komusita Sebuloni Ekandjo.)

OKUYAKULA MUKWETU OKWO OKULONGELA KALUNGA

Jesus mokupopya eyakulo nohole yoku-hola omuntu omukwetu, ota popi elongelo lomunhu okulongela Kalunga, ekwatafano pokati komunhu nomunhu, nosho yo pokati komunhu naKalunga kali shi okutongolwa.

Ngenge hatu tale moipango omulongo yaKalunga ohatu hange mo eembinga di li mbali, oipango itatu yopehovelotai popi nghene omunhu e na okukala naKalunga. Ndelenee ngenge hatu tale vali ombinga ikwawo, ohatu hange ombinga oyo yi na oipango iheyali oyo tai popi pokati komunhu nomunhu mukwawo nhumbi ve na okukalafana.

"Hola omukweni ngashi u lihole ove mwene." Mondjila yomunongomhangoo a li a hala okuya meulu, Jesus okwa tula mo mukwawo ou ina itavelelwa okukoyelelwa po. Okushiiva omhango ashike inashi wana, ndelenee omunhu okuna okukalela po Kalunga nomunhu mukwawo.

Otu na oshitya tashi popi oudiakoni (eyakulo) eshi osho nga tashi holola eyakulo okuyakula omunhu keshe oo eli meefina, palutu ile pamwenyo nopamhepo yo. Omusamaria omunamutimanghenda okwa longa oshilonga sheyakulo mokuyakula omunhu oo a li a hepekwa, osheshi oshipango shohole osha li sha ya meni lomwenyo waye, ina dula oku mu koyelela po, okwa diladila moule nokwa yakula eyakulo tali tu kumifa. "Ndele okwa ya kuye a manga oipute yaye, a tila mo omaadi nomaviinyu, okwe mu londeka koshilondwa shaye, ndele okwe mu twala kongulu yovaenda ndele te mu xungu." Luk.10:34.

Ovakwetu nye otu na ovamwameme mokati ketu tava pumbwa eyakulo letu, vamwe ove li momaumbo etu ohatu teelelwa tu va yakule, ovakulupe, ovanau-du, ovanandunge, ovapofi, oilema, ovakambelindunge, eefiye, ovafiyekadi, ovanadolongo woo! eengholwe. Eengundu edi adishe otadi teeleele eyakulo loye ngaashi Kalunga e ku pa.

Kalunga okwa yandja eeshali di lili nodi lili, ndelenee ohatu ka pulwa nhumbi twe dilongifa. Ngenge hatu talele po ovakwetu mekwatafano naKalunga omunhu keshe omumwameme, naasho eshi ningilwa osha ningilwa Kalunga. Okuningila sha omukwetu ile okuhaningilwa sha otashi ka pulwa mefikulu laxuuninwa. Opo nee oye teva nyamukula ndee ta ti: "Oshili handi mulombwele: aishe inya inamu iningila umwe waava vanini ame mwene inamu i ningila." Mat.25:45.

Epya lyOmuwa

Omunepeya kehe oha soshimpwiyu shepya lye uuna omvula sho ya hedha popipi, omunepeya nguka ota longekidha iilongitho ye yokulongitha epya lye noti ipyakidhile shili noonkondo opo tuu a kale a mona kehe shimwe shoka ta vulu okushimona.

Omvula onenenene nokutya (oohapu dhaKalunga) oya lokele uuyuni auhe, noya meneke iilya mepya lyaKalunga, ihe mokati komimeno ndhoka omwa mene wo iigwanga yomaludhi gi ili nogi ili nomauzigo (poison) gayo paukwatya wayo. Epulo otali ya:

Iigwanga mbyoka nenge tu tye omwii-dhi ngono tagu li po epya lyOmuwa otagu longwa mo kulye? Aalongi yepya lyaKalunga omo ye li miilonga noya longa nokuli, epya ngashingeyi olya tiligana. Jesus mwene gwepya ota ti: "lilya oyi li po oyindji, ihe aalongi oyo aashona."

Mepyatumo lyaKalunga iilya yalyo oyi li po yatiligana ihe oombuku ndhoka tadhingoongola dha lamba omilinda dhuuyuni mbuka otadhi kihike epya lyaantu. "Galikaneni ano omwene gweteyo a tumee aalongi keteyo lye". Mat.9:38. Jesus ngoka kwa li omukuni omunene gwoombuto ndhoka oombwanawa dha hogololwa ina hala dhi kanene mo miyagaya yuuyuni mbuka, oshoka okwa galikana nale nokuli dhi mone aateyi naaongeli mboka ye na ehala ewanawa nombili nohole okudhi gongelela epungulo lyaaluhe.

Tomas Ihuhwa.

Okutumbula oudiakoni hasho shi na oshilonga, ndelenee oku u longa ngashi wovene tau ti. Omukwetu omuholike oshilonga sheyakulo oshe ku teeleele opo u kwafe vakweni ve li meefina, onawa nookuli nge to va yakulifa nomeliko loye, eshi tu shi ningeni nomwenyo auhe.

Omudiakoni Kristofina Ndatjomawe.

OMUKWETU

Oye oshifo shOngeleka onkwaevangeli paLuther yomOwambokavango. Ohashi nyanyangidhwa mOnilpa. Omukuluntu gwoshifo omumbisofi dr. Leonard Auala.

Ondando yoshifo komumvo muSuldwes nomuAfrika alihe R 1. 00 kombanda yomafuta R 2. 00.

Ondando nomambesitelo naga tumwe kOmukwetu Onilpa: P/B. 2013, Ondangwa.

Omatseyitho agehe gomuntu mwene ohaga futiwa kumwene.

OWAMBOKAVANGO CHURCH PRESS
PRIVATE BAG 2013, ONDANGWA S.W.A.
9270