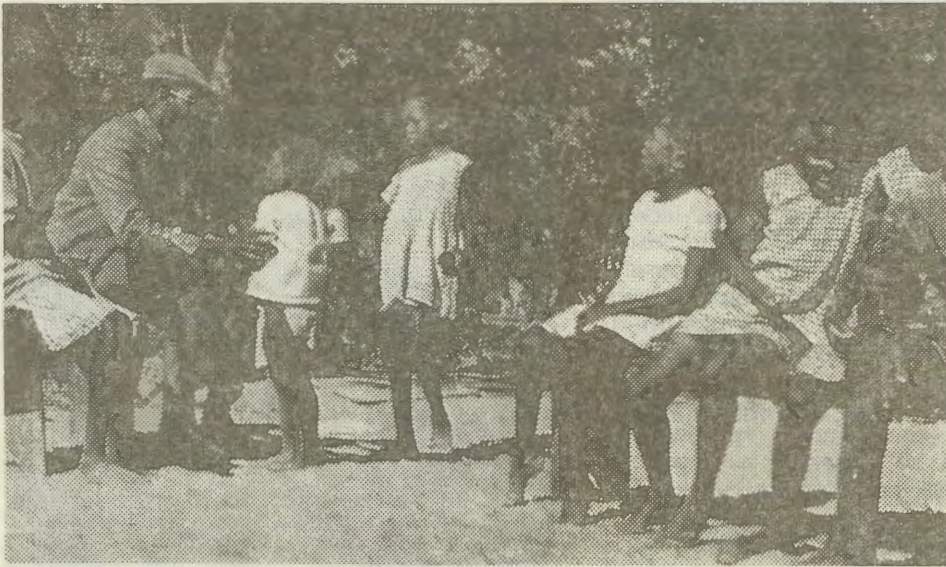


OMUKWETU

Registered at the General Post Office as a Newspaper

10c



Omusitagongalo Lasarus Nghipandulwa ta nyanyudha yamwe mboka ye shi okwii nyenga, manga taa otele po pokamutenya.

Kape na ngoka ta tseya shono tashi longwa kOngeleka ya Elok mEngela, manga inaa ya e ki italele ko. Oyendji ya li moshigongi-geleka nuumvo mEngela, oye shi hempulula nonkumwe onene, "Kanda li ndi shi shi shika."

Mwiyaka oya mono eputudho lyoomboio naaposi. lilonga yawo yiikaha sigo onena aana-meho, otwa nyengwa oku yi longa. Ihe shono omuntu wa li to shi tala, omwenyo etagu tende, okutala esiloshimpwiyu lyaambo-ka nkene ya valelwe ye ende.

Otaa langekwa, otaa pewa kokana ngaashi uuhanona, shaashoka omuntu ombambandjele ho iningile, yo otaye shi ningilwa ashike. Kaye na ukolele wolutu, kaye na ondjelo yoopala okutalwa. Otashi ku pula ohole oyindji, okuninga omuyakuli gwawo.

Ihe mpeyaka mEngela, oya fa ya londekwa koshikulundundu notaa tala eopalo lyyuntshitwe noku li nyanyukilwa. Kaye na we ezaza, onkayi, ondjala, enota ngashi oyendji yoludhi nduka ye li momagumbonkalo, aantu sho ya vulwa oku ya yakula.



Omukuluntu gwEnongelo lyaayakuligongalo, omusitagongalo lpinge—Kristof Shuuya, ngoka e li wo omukuluntu gwo-shilonga shuudiakoni mOngeleka.

1) IILONGA YOMUKULUKADHI NOMUSAMANE OYA TOPOKA..

Ewi lyaakiintu methimbo lyetu

Ope na ehokololo lyOshisoomi, tali tu hokolelele omusamane nomukulukadhi gwe. Omusamane oha longo iilonga yokukonga oongombe nokupanda iikuni, okupulula nokuteya mepya, manga omukulukadhi ha longo iilonga ye yomegumbo: okwoopaleka, okuteleka, okusila aanona oshimpwiyu noshwo okukanda nokulitha oongombe.

Omusamane esiku limwe okwa vulwa iilonga ye. Okwa tala kutya iilonga yomukulukadhi iipu. Manga omusamane ha kala pondje muutalala niilonga ye iidhigu yomepya, omukulukadhi oha kala meni lyegumbo muupyuu uwanawa. Omusamane okwa yemata.

Omukulukadhi okwa li wo a vulwa nokwa tala kutya iilonga yomusamane iihwepo. Manga omukulukadhi ha hepekwa kiilonga oyindji noha si kuupyuu pombiga neopaleko lyegumbo nokukanda oongombe, omusamane oha kala pondje mombepo ombwanawa. Uuna omukulukadhi ta yogo iililomwa, omusamane ota kotha. Omukulukadhi okwa yemata.

Oshipopiwa shika osha popilwa moNakayale moshigongi shaalumentu 22. 8. 1976.

Esiku limwe ayehe oya hwama noya dhengathana nomalaka.

"Iilonga yoye iipu. Ho vululukwa megumbo manga ndi li muupyakadhi womepya," omusamane osho a ti.

"Iilonga yoye, te ti, iilonga yoye otayi longwa komuntu kehe nando kokahanona," omukulukadhi okwa yamukula a ti.

"Yelekela u tale" nena ongoye to longo ko kiilonga yandje.

Osho ya pingakanitha iilonga yawo. Omukulukadhi okwa tameke okupanda iikuni. Ihe ekuya olya li kaali na omayego, iikuni iikukutu. Omukulukadhi okwa nyengwa.

Omusamane okwa tameke okuteleka oshithima. Yayee! Oshithima sha ningi etepi, osha nika othungu, inashi nika nawa. Omusamane okwa nyengwa.

"Iilonga yoye iidhigu", osho omusamane a ti. "Iilonga yoye iidhigu", omukulukadhi wo a zimine.

Osho ya shuna miilonga yawo yonale. Okuza mpoka oya kwathathana, oshoka oya tseyu uudhigu wiilonga yaayehe yaali.

Kalunga okwa ningi efaneko lya tya ngiini? "Mu li pangele." Kape na etopoko lyiilonga pafaneko lyaKalunga. 1 Mos. 1:28-29.

"Omukiintu oye omukwathi". 1 Mos. 1:28-29. Etopoko lyiimpwiyu: 1 Mos. 3:16-17.

-omukiintu ota vala uunona.



-omulumentu ota pangele omukiintu
-omulumentu oti ipyakidhile nepya.

Kalunga ina faneka unene iilonga tayi longwa kulye. Otse aantu twa ningi efaneko ndyoka na eyooloko lyokutopolelathana iilonga. Aakulukadhi Aasoomi ohaya kanda, manga aalumentu Aawambo oyo taye shi ningi. Aalumentu Aasoomi ohaya pulula nohaa teya, manga oshilonga shoka mOwambo oshaakiintu. Miigwana yimwe aalumentu kaye nako nasha neputudho lyaanona, manga iigwana yimwe tayi tala kutya oshimpwiyu shoka oshameme natate.

2) MOMAGUMBO OMU NAOMAYEMATO

Mokati kaakulukadhi onda ndhindhilike oomwenyo dhaakulukadhi yamwe odhu udha omayemato, Oompumbwe dhawo inadhi gwanithwa.

Tala kep. 4

**JESUS OYE TA HULITHA PO OMIMVO
DHUUDHIGU Joh.5:1-14**

Oshituthi shAajuda tashi popiwa petameko lyontopolwa ndjika, inashi yela kutya osha li sheitheto, Ester 6:21, nenge osho-shipe hashi ningwa popepi noPaasa ya tumbulwa montopolwa tayi landula 6:4.

Ogwo omukalo gwaJohannes okuhokolola nkene Jesus ta kala miituthi yopashigwana pamwe noshigwana she okugalikana Kalunga. Osho kwe ya sigo pedhiya nenge pokandama hoka ka longithwa ngokangangelo taka ithanwa mOshiheberi "Bethesda" tashi ti Egumbo lyohenda, nenge oBethzatha, tashi ti Egumbo lyoomono.

Opo mpoka Jesus i itsu omulumentu a kalela uuhaku. Walyewo okwa kala mo ethimbo li thike peni, ihe uunkundi we owomimvo 38. Epulo otali penduka mbala kutya mpoka okwa li tuu a kalela omupondo gwasha nenge osima.

Oku na omahokololo ogendji taga popiwa kombinga yomeya gomokandama hoka. Ehokololo limwe olya fa ekwawo twe li igilila mpaka kutya nge to yi lwotangotango pefuta, oho hupagele mo momeya galyo, opo efuta lyaa ku geele (etele oshiponga).

Okandama oka li ka tungwa kombanda yothithiya. Pomathimbo nomathimbo omeya gothithiya ohaga tukuluka notaga fulukile mokandama notaga inyengitha omeya agehe mokandama.

Paitaalo lyoshigwana shiyaka, meinyengo lyomeya ngoka omu na oonkondo dhomyengeli, nomuntu ngoka to gulungutile mo tangotango, oto aluka kuuvu woye, nau kale owashike. Meitaalo ndika omuvu nguno omo a adhika.

Osha ningwa olwindji mokukalamwenyo kwomuntu, kutya Jesus ite mu adha mumbiyoka yi na ukolele. Jesus ote tu toola te tu adha twa kanyatela momaitaalo gopombambo, muunkundi wopalutu, nuunene moondjo.

Ihe ehologo lyaJesus pomuntu aluhe ekumithi. Ina nyenyetela omuvu sho a kalela okandama haka ka ningwa oshikalunganga shaantu. Ye ine mu kumagidha wo a tsikile neitaalo lye lyopombambo, aawe.

Olukeno lwaJesus komuntu otalu dhimbululwa unene mpoka sho ihaa pula oondjo dhokonima. Ine shi ningila omukiintu, gwetiko lyombinzi ngoka a manene eliko lye neitaalo mokwiyanekelitha koonganga. Ine shi ningila ohonda yOmusamaria pomuthima gwaSikar.

Osho wo ite dhi pula ndje, ye ite dhi ku pula.

Jesus ota pula etokolo lyomuntu poka-thimbo hoka e li koshipala she, **ngashingeyi**. "Ino hala okwaaluka?"

Ihe ehokololo ndika oli na wo uuyamba woondunge dha yela okudhimbulula omutima gwomuntu gwaa na sha namukwawo nomutima gwaJesus gu udhilila ohole nolukeno.

Ngoka a lala omimvo odhindjidhindji kee shi we kwiikwatha, naantu ya nyengwa oku mu ningila shono te shi pumbwa, ngashingeyi oye mu monene ompito yokutamaneka.

Inaa ipula shito noveta ndjoka tayi yonwa, ngele to talele mukweni moluhepo ngoye itoo kambadhala naye u mu kwathe. Ihe otaa ipula unene neyono lyompango yokuhumbata esiku lyesabati.

Omuntu osho e li ngaaka momeho gomuntu omukwawo, ihe omutima gwaJesus oku tu tala, otagu hemuka nota hulitha po omaudhigu getu.

Sebulon Ekandjo

**Monesi oyendji oyi igandja
kOmuwa**

Nuumvo muMai, otwa li tu na oshiwike shelago mOnesi, omuyevangelithi tate Efraim Angula, sho e tu talele po.

Okwa indilwa okangundu kolwiimbo ka kale taka ende nomuuvithi komikunda nomongeleka wo opo ya imbe. Okangundugalikano megongalo ka pewa oshimpwiyu ka humbate oshiwikembimbeli momagalikano. Okangundu haka oka li ke shi taamba neitulomo enene. Oka tokola ke shi ninge ngeyi:

Oka kala haka gongala esiku kehe mehola-mo manga oshigongi inaashi hita, opo ka pule eyambeko lyaKalunga kuye omolwomuuvithi negongalo. Kalunga a egululile aantu ye osheelo shoohapu. Konima yoshigongi oke shi ningi wo ka hambelele Kalunga shoka e shi ningi. Ka indile Kalunga a tsikile iilonga moomwenyo dhaantu ye, ye a hiye natango mboka inaa holoka.

Pehulilo lyoshigongi shesiku kehe aantu oye-ndjiyendji yi igandja kuJesus poshiyambelo. Oyendji ya kongo ombili yaJesus mokukala moonkundathana nomuhempululithitate. Otwa yambekwa shili mpeyaka.

Ongula omuyevangelithi manga inaa ya komukunda okwa indilwa kaalongisikola a ningile aanona owandaha. Osha li tashi hambelitha Kalunga mokumona aanona oyendji taa igandja kuJesus. Opwa li wo ootate yamwe mboka ya li ya tokola okweenda pamwe nomuvangelithi komikunda esiku kehe nando kaye shi aauvithi. Oya li ya nyanyukilwa esilohenda lyaKalunga ketu.

Tala kep. 8



Meme Rauna Mvula, omulongi pamwe natse mOshinyanyangidho, okwa kala omasiku o-gendji mombete moshipangelo shEtumo, mO-nandjokwe. Ngashingeyi okwa lundululilwa koshipangelo shEpangelo kOvenduka. Otatu tegamene hwiwaka Kalunga ota yambeke o-makwatho agehe te ga pewa, opo a galukile ishewe mbala kutse.

Dha za kep.2

Mokukundathana naasamane onda ndhindhili-ka oomwenyo dhawo ihadhi nyanyukwa o-molu omikalo dhaakulukadhi. Momagumbo gamwe kamu na elongolokumwe pokati komusamane nomukulukadhi.

Tse aakulukadhi otwa pukululathana noohapu dhOmuwa, Mat. 22:39. "Hola mukweni ngangoye wi ihole mwene". "Omusamane gwandje ndishi omukwetu?"

Ohole otayi ti shike? Ohole yaKalunga oyo o-shiholelwa oshivanawa kutse.

Kalunga okwa shiti uyuni. Manga omuntu ina shitwa Kalunga okwa shiti: uyelele, uuyyu, omeya, oshithima, onyama niyimati. Omolwa shike? **OMOLWOOMPUMBWE OMUNTU E DHI NA.**

Kalunga okwa gwanitha oompumbwe dhomuntu, manga omuntu ina shitwa. **OHOOLE YI THIKE PENI!**

Natu tsikileni okukonakona ohole yaKalunga.

Omuntu okwa tidhwa moparadisa, a kanitha Kalunga nekawatathano naye. Ihe momwenyo gwomuntu omwa kala ondjuulukwe okuyuulukwa Kalunga. Omuntu a lie noompumbwe dhokuhedha kuKalunga, ihe ina mona ondji-la.

Kalunga okwa tumu Omwana gwe muuyuni a dhipagwe opo mombinzi ye, omuntu a mone ondji-la yokuya kuKalunga. **KALUNGA OKWA GWANITHA NATANGO OOMPUMBWE DHOMUNTU. OHOOLE YI THIKE PENI!**

Aasamane! Ngele tamu gwanitha oompumbwe dhaakweni, omu na ohole yoku ya hola. Omukulukadhi gwoye omukweni tuu?

Omayemato gomagumbo otaga fupipikwa ngele tatu landula ondji-la ndjika yohole.

3) ELONGELOKUMWE LYOMUSAMANE NOMUKULUKADHI.

Natu pulakeneni oompumbwe dhaakulukadhi ye dhi na kombinga yiilonga ya talwa oyaa-kulukadhi yomagumbo. Onda pula aakulukadhi 40 yokombinga nombinga yOwambo. Yamwe oye niilonga palwe (aalongi, aanasitola nsht) nayamwe oye li miilonga yegumbo. Onda ya pula: "pakutala kwoye omusamane ota vula oku ku kwatha miilonga yini po?"

Pamayamukulo gawo, aakulukadhi ohaa tegelele ekwatho lyomusamane unene miilonga yokupulula, okulima, okuhelela nokuteya manga yamwe ayeke taa tala kutya omusamane ta hu, ta yele, ta tsu nenge ta mu omwiidhi.

Natango ekwatho otali tegelelwa mokukonga iikuni nokuteka omeya, omusamane ngele oku na oshiyenditho sha sha.

Ongundu ontshona tayi tala kutya ekwatho lyomusamane, onge ta teleke nota dhunga ontaku, ta yogo oonguwo note dhi kangula. Konyala ayehe taa tala kutya esiloshimpwiyu lyaanona olyaayehe yaali neputudho lyaamati olyahe, manga eputudho lyaakadhona lya-yina



Elongelokumwe nuukumwe womondjokana, osho hau tamekwa ngeyi pamukalo gwoshituthi, moka oyendji haya hiyilwa mo okulya nokugalikanena.

Muuyuni omwa ndhindhilikwa oshinima shimwe. Tula omusamane miilonga yokuyoga oonguwo, oye ta ningi eshina lyokuyoga oonguwo. Indila omusamane e ku tekele omeya, oye ota kongo omuligu neshina lyolusheno lyokweetitha omeya kegumbo.

Tala kep. 8

Aagundjuka yomagongalo gatatu; Grootfontein, Otavi naTsumeb, oya gongala moshigongi shawo shokomumvo muGrootfontein nuumvo muMai. Aagundjuka yokiinagoga iyali, Berg Aukas naKombat omo wo ya li.

Oshipalanyolo shoshigongi, osha li shono shOngweleka ayihe ya ELOK; "Tate, ehalo lyoye nali gwanithwe."

Omvula dha piti, aagundjuka oya kala ngaa haya ningi omathigathano moondjimbo nomonokololo mbyoka hayi konakonwa pu monike omusindani. Nuumvo olwo lwotango sho ya li taa kondjele ekopi.

Omakondombolo osho ga li ehete. Aashaanda shOngwe, oya ti: Muka omeelo lyetu, ekopi itamu piti mo nalyo, kombinga yoondjimbo nomahokololo. Ngoka wa hala u li mone, ila u li tale mOshaanda.

Aagundjuka yOkedhiya lyAamutumba naShikoto (Tsumeb) ya zi po wo nolyawo molwimbo lwokwartete.

Kombinga yiimaliwa, egongalo kehe olya li lya pulwa li etelele R 60,00 nomusindani oye ngoka a kondo po. Shika oshe ende ngeyi:

Grootfontein	R 90,00
Berg Aukas	87,10
Tsumeb	65,00
Otavi	60,00

Nda ti, meme Nashongo, oko tuu u li keNgela? Shino sha li mOshaanda shoye muno, kashi umbwa negonga. Omeho osho twe ga pe, omakutsi tatu telekele.

Aawiliki aape oya hogololwa wo moshigongi shika. Omuyevangeliste Josef Iyambo peha lya Sakaria Nashongo, oye a hogololwa a kale omuwiliki gwaagundjuka yomagongalo ngoka, nomupeha gwe omusitagongalo Vilho Shiyandja, peha lya Simon Shiwagala ngoka ti ilongo uusitagongalo kEngela.

Otwa li twa yambekwa moshigongi shika.
Ev. J. Iyambo

TWA SA OLUHODHI

Otatu ku nyolele ombilive ndjika tayi leshwa komuntu kehe, oshoka ino gunwa komakumagidho ogendji ga piti, opo u ninge po wo tuu ando omatokolo ge na oshilonga okukandula po omaudhigu ogendji moshilongo. Natango otatu ku galikana, opo u taambe ewiliko lyaKalunga moku ninga po omatokolo ge na oshilonga.

Shika osha kuthwa mombilive ndjoka ya shainwa kaawiliki yOngongahangano yAakwaluther muuyuni (LWF), ye yi nyolele koministeli yotango ya S. A.

Ovanyasha moshitai shaUkwanyama noneudo ova ningile oshoongalele shavo shokomudo mEdundja pexulilo laJuni. Efiku letameko omweevangeliste wovanyasha Filippus Nakanwe, okwa kunda ovawiliki vovanyasha, ovafita, ovalongi, ovayevangeliste noi-lyo aishe yewilikongudu lovanyasha moshitaingeleka, moku va kaleka ofika komesho yoshoongalele.

Mokuva twa omukumo moshilonga shavo, okwe va leshela mu 1 Tim. 4:12,13 na 1 Kor. 15:58. Ongudu ei aishe oya kunda ovanyasha neimbilo 495; 3 nde ovanyasha ova nyamukula novelise 5 opo aveshe kumwe va shakena movelise 6.

Oshoongalele osha li sha mwenyekwa nomaimbilo mape inaa udika nale mewiliko laMateus Nhinda ou kwa li omuponhelewiliki musho.

Omaimbilo omaongalo

Opa li tapa ti penu momafiyafano olwiimbo. Ongwediva oyo ya li yotete, ya ya nekopi. Okatope taka shikula ko.

Kombinga yoimaliwa yo, omaongalo okwa kondja oshilumenhu, nde Edundja la ka pita. Omaongalo okwa ongela ngaha:

Edundja	R 166,05
Ongwediva	155,57
Ongenga	80,00
Engela	77,00
Eembaxu	77,00
Ohalushu	76,00
Olupandu	76,00
Okalongo	76,00
Onheleiwa	76,00
Okatope	76,00
Engela Hosp.	76,00
Ondobe	40,00
Eenhana	2,25

Omaongalo, Kongo, Omundaungilo nEndola inaa fika. Ovanyasha okwa li yo tava fiyafana omolwokwoongelela oimaliwa yoshiauto. Ava va findana ovo tave ke shi shinga. Ovalumenhu ova dengwa R 23,69. Davo R 22,30 adike.

Vamati vaUkwanyama, shiiveni kutya ngenge ololi tai ka monika, ovashingi vayo oukadona.

Ev. F. Nakanwe



Omupresidende gwongongahangano yAakwaluther, Mikko Juva.

Okuza petameko lyomumvo nguka (1976) otwa taamba aluhe omagano giimaliwa muka mO-mbelewa yiiniwe ya ELOK, ga zi kaamwameme mu C.D.M. Oshe tu nyanyudha noshe tu dhi-mbulukitha nkene Ombimbeli tayi tu longo okugandjela Kalunga oshitimulongo, kAaheberi 7:4.

Mboka ya li ye tu tumine oyo:

1. Hafeni Titus	R 30.00
2. A. Kambonde	R 10.00
3. Onesmus Nandago	R 10.00
4. Eliakim Josef	R 30.00
5. Jonas Thomas	R 30.00
6. Kleopas Axel	R 15.00
7. Josef Johannes	R 7.00
8. Johannes Sakeus	R 30.00
9. Paulus Utoni naNuuyoma liyambo	R 60.00
10. Simeon Nauyoma	R 30.00
11. Sakeus Mika	R 10.00
	<hr/>
	R 262.00

Kalunga na yambeke aagandji mbaka ye ne ya gwedhele ko ashihe ye shi pumbwa:

Omudhiginini gwiiniwengeleka
Sakeus Hekandjo



Omuwilikingeleka wa VELKSWA, dr. Lukas de Vries

OSHITUTHI SHETUMO MOKAHANDJA

lilyo ya ELOK yi li mehalakano mOkahandja, oya dhana oshituthi shEtumo.

Osha tamekwa nelongelokalunga. Omwa shashwa aapagani yahetatu, yahamano oyOshitayingeleka shUuninginino nayaali oyOshitayingeleka shUukwanyama.

Omwa li oondjimbo nomahokololo getumo pamalufu giitayingeleka. Aakriste oya hwama mombepo okulonga oshilonga shetumo.

Okwa ningwa ongalo pathigathano miitayingeleka. Nongalo kehe moshiketha shetumo mOshitayingeleka shawo.

Aasindani oyo mba:

- 1) Oshitayingeleka shUuninginino R26,60
- 2) Oshitayingeleka shUukwanyama R20,25

- 3) Oshitayingeleka shOndonga 7,00
 - 4) Oshitayingeleka shaKavango —
- Kumwe R53,85
Peha Iyegongalo
Ev. S.E. Amutenja

Nande osha fa nokutya kave na vali omhito imwe i lili okumangulula Namibia, kakele mokulongifa ekuni, kombinga yOngeleka, kai na fiku nai popile oshinima eshi.

Osho omuwilikingeleka wa VELKSWA, dr. Lukas de Vries, a nyamukula eshi a pulwa onghalo yOngeleka pefimbo eli lomalinyengo mahapu moshilongo.

Pefimbo letalelepo laye kombada yomafuta pexulilo laAguste, omushamane de Vries okwa kundafana nomunambelewa mOngongahangano yOvakwaluther omikundu doshilongo eshi. Omuwilikingeleka okwa ti:

Ongeleka natango otai twikile okuudifa edimananopo lomatimba nombili. Otai twikile okukundafanwa neengudu doupolotika moshilongo, opo pu monike ondjila yombili moshilongo.

Eenghundafana pokati kepangelo novakondjelimanguluko, oshinima a tala sha fimana unene, ashike omushamane de Vries ine shi lineekela vali tashi dulika mefimbo eli.

“Ngeene tashi ningwa, shapu omepashukilo la V. V. O.,” osho omuwilikingeleka a ti.

Kombinga yelipangelo tali longekidwa mOvenduka, omushamane de Vries okwa ti kutya, otali limbilike, osheshi ola tokolwa inaku pulwa nande omadiladilo oshiwana.

“Fye eshi twa hala, ehoololo loshiwana ashihe, mepashukilo la V. V. O.,” osho omupresidende wa VELKSWA, de Vries a nyamukula.

(Lwi)

Tse atuhe aakriste otwa tseya kutya uukriste oshike notau pula shike, onkee inashi pumbiwa ndi u fatulule mpaka. Tse sho tu li po haatuhe aanapolotika nomolwaashoka inatu tseya kutya uupolotika oshike, onda tala kutya osha pumbiwa ndi fatulule pafupi oshinima shika.

Paufupi opolotika oyo omupopyo ngoka hagu longithwa okuulika iilonga nenge omukalo gwepangelo nenge ishewe iilonga mbyoka hayi longwa kaanapolotika.

SHOKA OPOLOTIKA "YAA NA OKUKALA". Ngele omuntu ta ti: "Onda hala emanguluko lyokupopya, lyokweenda shaa mpoka nda hala nenge lyomahupilo.

Onda hala epangelo limwe lyaantu ayehe mo SWA, inandi hala epangelo lyomavigumbo. Ondi tonde okatongotongo nenge yilwe. Ondi hole omulandu gwomavigumbo, nenge omuntu ta longitha edhina Namibia peha lya S. W. A; shika kashi shi opolotika.

Aamwameme, ngele ondi li mondjila kutya ayihe ya tumbulwa kayi shi opolotika nena opolotika ashike, na oshike kashi shi opolotika?

Oongamba dhopolotika odhini? Ngele onda puka nena ondi li mondjila kutya omuntu ita vulu a ye opolotika ondapo.

Aamwameme, ondi shi shi nawa kutya, inandi puka ngele ote ti uudhigu waaNamibia kau shi wopasosiale, wopamahupilo, wopamithigululwakalo nenge welongelokalunga, ihe owopapolotika. Pakutseya kwandje kape na oshilongo monkalamwenyo yaantu unene tuu momathelemimvo 20, sha kala sha simana mHangano lyigwana yUuyuni (League of Nations), mHigwana yaHangana (UNO), mOhofa yUuyuni nenge mUukumwe wligwana yaAfrika (OAU), ngaashi Namibia. Shoka otashi ti ngele omuntu owa hala okuninga po sha mepongololo lyomukundu gwaNamibia, nena owa taamba oshimpwiyu oshidhigudhigu.

Oshilongo shika osha kala shi na ondjila onde nondhigu okweenda, okuza 1920 epangelo lyasho sho lyi inekelelwa S.A. sigo 1971 aagandjimayeke yompangu yuyuni ya pangula epangelo lya S.A. okukala omuleli gwasho.

Aanandunge oyendji, aasita, aapanguli, aantu yomevi muka osho wo yopondje oya kambadhala okugandja omadhiladhilo gawo opo ya kuthe po omukundu nguka omudhigu.

Omambo osho wo iifo oyindji oya shangwa omolwoshipotha shaNamibia. Omaludhi ogendji oga ningwa mOshigongi shaAyehe shuuyuni (General Assembly), mOraata yligwana yahangana, mUukumwe wligwana yaAfrika, momagumbo nosho wo momahangano gaayehe gi ili nogi ili, ihe omukundu nguka ina ye gu kutha po. Ohoni onene ngiini.

Nandi shune koshipalanyolo shoshipopiwa shandje "Ehiyo lyomeendelelo kaanapolotika ya S.W.A./Namibia" onkalo yaNamibia muka tu li mo naandjoka yonakuyiwa oyi li momake gaanapolotika.

Ngele omukundu gwoshilongo shika otagu ka kala nepangelo ndyoka lya halika koyendji nenge ina li pandika kaantu yomevi muka, ashike oshi li miikaha yaanapolotika. Tse otwi ilonga okutseya nenge okwiitaala.

Tse aakriste otu na ondjigilile ndjoka yoku inekela owala aanapolotika, manga twi ihukata owala. Nandi mu pule omapulo gamwe. Tse ongaakriste otwi ikwatelela peni monkalo ndjika yoshilongo shetu yi li po ya nayipala? Otu na okuninga shike opo tu kuthe po omukundu nguka gwoshilongo shetu nokuutha onakuyiwa yetu?

Onda gandja omapulo ngaka kune oshoka aanapolotika oya fa ya ndopa okukutha po omukundu gwoshilongo shika. Onde shi itaala kutya aanapolotika oya pumbwa ekwatho lyetweni, hamolwaashoka andola sho tu li aantu yomevi limwe nenge sho tu na uudhigu wa faathana, ihe omolwashoka owala ye li aakriste aakwetu.

Tse ongaakriste otu shi shi nawa kutya kashi shi oshiwanaawa oku idhopa moshinima sholudhi kehe ngele inashi pumbiwa. Omolwonkalo ndjika ondi wete kungame sha pumbiwa okwiitula miinima yuupolotika. Mokwiitula muwo otandi dhiladhila okugandja epukululo nenge oku ya pa ohokwe opo ya mane po omukundu nguka meendelelo, ya mone etokolo lya pandika kwaayehe.

Ngashi nde shi popi nale, kutya uudhigu mbuka ou nasha nuupolotika. Oshinima shoshili shoka ndi shi shi, ooshoka kutya Aanamibia oya hala emanguluko lyawo. Opu na omaudhigu gamwe ngoka tu na okukala aluhe twa kotokela, ngaashi;

- (a) einenepeko
- (b) okwaanowino moshinima
- (c) okwaanohole
- (d) nehalo okumona esimano muupolotika

Ngele mutse itatu kutha mo iinima mbika nenge oku yi yanda, nena uukriste wetu otu ka yonwa po koonkondo ndhoka dhi li po aatondi yuukriste.

Mokuhulitha oshipopiwa shandje onda hala okuhulitha noohapu dha "dr Martin Luther King Jr".

"Otandi uvaneke ngame mwene:

- (a) okukala omuhanganithi (mediate) momalongo nomonkalamwenyo yaJesus.

- (b) okweenda nokupopya pambili, oshoka Kalunga ohole

- (c) okugalikana kehe esiku nokulongithwa kuKalunga opo aantu ayehe ya manguluke

- (d) okwiigndia opo aantu ayehe ya manguluke

- (e) okutakamitha pamwe nookuume osho wo naaleli yoshilongo shetu

- (f) okukondja noku ningila yakwetu muuyuni elongelokalunga

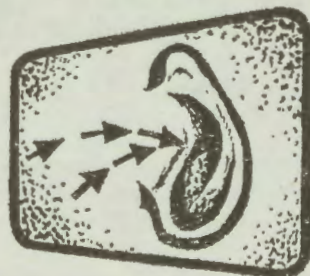
- (g) okwiigndia elongitho lyoonkondo ngoshinima shotango osho wo, lyelaka nolyomotima

- (h) okulalakanena okukala muukalinawa wopambepo nowolutu.

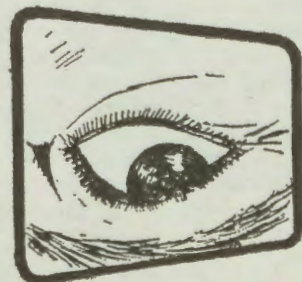
Tse aakriste ngele otatu taamba oohapu ndhika noku dhi landula nena otatu ka adha shoka tashi nyanyudha Aanamibia ayehe.

E. J. Amutenja

Oshipopiwa shika osha popilwa mOngwediva yAagundjuka ya ELOK, moshigongi sha Christian Academy, 29 May 1976, shoka sha li noshipalanyolo "Ehiyo lyomeendelelo kaakriste yomu SWA/Namibia". Iipopiwa oyindji oya li ya ningwa.



Shono eho inaali shi mona nokutsi inaaku shi uva, sho inaashi ya nando momadhiladhilo gomuntu, osho shono Kalunga e shi longele mboka ye mu hole.



Oyendji yi igandja kOmuwa

Dha za kep. 3

Esiku kehe omwaalu gwaakwashigongi gwa tana. Omuuvithi okwa kuminwa okugongala huka. Osha fa aantu ya dhimbulula nokutya omathimbo omawinayi, onke ya tokola okwii-gameka kuKalunga kawo. Ngweye ou li ngiini methimbo ndika?

Kalunga tate na hambelelelwe oohapu dhehupitho ndhoka e dhi tumu kutse, dhi noonkondo oku tu tunga noku tu kankameka sigo twa aadha ethikilo lyetu, ehupitho lyomwe-nyo.

Linda Kiyala

Ewi Iyaakiintu methimbo lyetu

Dha za kep. 4

Omusamane Omuwambo nge ta tameke okukwatha omukulukadhi mokutsa nena, okathimbo kowala, eshina lyokutsa iilya tali ka monika megumbo kehe.

Ekwatho lyomusamane otali pumbiwa unene meputudho lyoluvalo. Pamadhiladhilo gaakonakoni okanona otaka pumbwa yina nahe. Omumati ota pumbwa he, oye oshiholelwa tashi landulwa kuye, nayina opo a koke mevi lyohole.

Omuadhona ota pumbwa he e li popepi naye, opo ya tameke okukondjitha aalumentu ayehe, naye ota pumbwa yina; oye oshiholelwa tashi landulwa.

Eholololo lyopetameko otali tu ulukile kutya iilonga yomusamane noyomukulukadhi oya topoka omolwelandulathano. Omuntu gumwe iha vulu iilonga ayihe. Noshitiyali, elongelokumwe otali pumbiwa, nekwathathano miilonga ayihe.

Natu shuneni kashona petameko. Pafaneko IyaKalunga omukulukadhi oye omukwathi gwomusamane. Ngoka ta yakula na yakule nenyanyu. Pafaneko IyaKalunga omusamane oye omupangeli gwomukulukadhi. Omupangeli ndishi a fa omukwaniilwa?

Omuntu e noku mu yakula mokutsa oongolo? Oye omunene e vule yakwawo. Omadhiladhilo ngaka omatoye tuu omusamane ta kutumba koshipundi shomukwaniilwa megumbo?

Tu taambeni oondunge moohapu dhOmuwa, momagumbo. Tu landuleni epukululo ndika miilonga ha momadhiladhilo ashike. Mat. 20:25-28.

Raili Seppala

Okafitolamambo komaulu oka monika vali mOngeleka yetu, oko taka kala haka tondoka keembinga neembinga doshilongo okutanda-velifa elaka linyenye levaangeli.

Omaano aa, okwa dja movaitaveli vOmwene mounyuni, ovo tave tu diladila alushe, nande inave tu mona oipala. Ove tu shii ashike moipala yovawilikingeleka ava hava mono.

Pamba ota hambelelwa shili, Kalunga oku shii kupandulwa, ngaashi oye ou a tile:

Ongulu ya tungwa, ya xwikwa po,
Mashina a landwa, a nyonwa po.
Inashi tinhwa po, osha temwa.

Enyeme li li po, omolwaye,
Luhepo kali po, ngeno haye.
Ovaitaveli ve li ta po,
Ovakwalutheri va longa po.



Shivanda va henga, shi taleni,
Ongulu va tunga, panduleni.
Eshina li li mo, ke li tale,
Omambo eli mo, ka pandule.

OMUKWETU

Oye oshifo shOngeleka onkwaevangeli paLuther yomOwambokavango. Ohashi nyanyangidhwa mOniipa. Omukuluntu gwoshifo omumbisofi dr. Leonard Auala. Amushanga Rev. Sebulon Ekandjo.

Ondando yoshifo komumvo muSuidwes nomuAfrika alihe R 2.00, kombanda yomafuta R 4.00.

Oondando nomambesitelo naga tumwe kOmukwetu Oniipa: P/B. 2013, Ondangwa.

Omatseyitho agehe gomuntu mwene ohaga futilwa kumwene.

OWAMBOKAVANGO CHURCH PRESS
PRIVATE BAG 2013. ONDANGWA 9270