

OMUKWETU

Registered at the General Post Office as a Newspaper

10c

OTWA KUNDWA KUTATE HEIMERIKX

Miilonga yaayapostoli ohatu lesa mo kutya mesiku lyaPentekoste Ombepo Ondjapuki oya lambele aayapostoli. Koonkondo dhOmbepo Ondjapuki, aantu mboka oya lundululwa, ya shitululwa lela noya nkondopalekwa.

Shoka sha monika osha li ashike oshikungulu nomalaka ga fa gomulilo ihe moshikungulu shika nomumulilo nguka aayapostoli oya ningi shili aantu aape. Oya udhithwa Ombepo yaKalunga. Ngashingeyi oya nyengwa okukala mondjugo niyelo ye edhilwa po. Oya yi pondje, e taa ningi oonzapo dhokuya muuyuni okuuvitha Kristus.

Momulongwa kehe gwaKristus Ombepo yaPentekoste otayi longo sigo onena. Ihe Ombepo Ondjapuki otayi vulu okushitulula uuyuni wetu wonena.

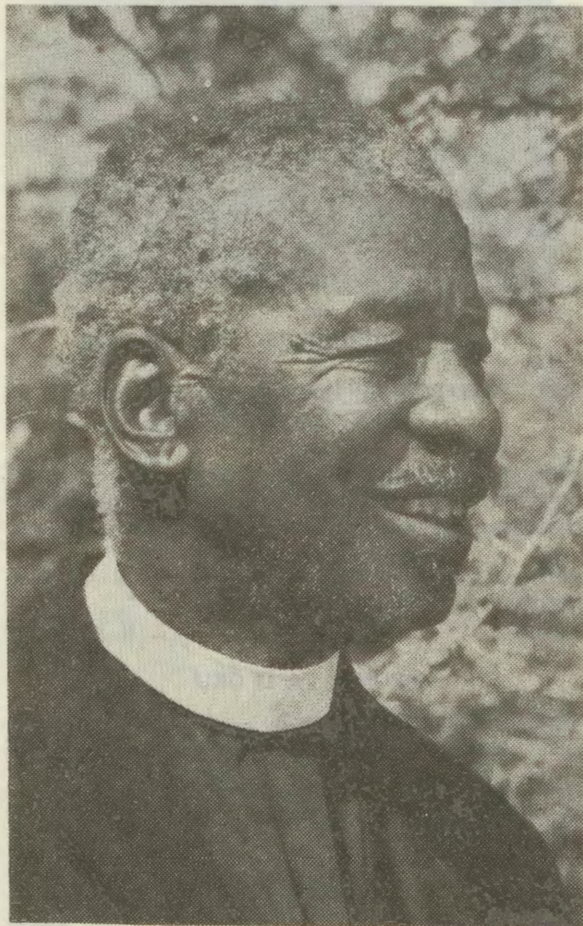
Ohatu ti: Uuyuni wonena owo uuwinayi. Ihe owo uuwinayi tuu u vule uuyuni waKristus naayapostoli? Awee. Moonkondo dhaKristus aayapostoli oya tameke okulundulula uuyuni wawo, ihe elunduluko inaali pwa natango sigo onena.

Koonkondo dhombepo yaKalunga otse aatumwa yaJesus muuyuni mbuka. Otu na okukondja wo noonkondo dhetu adhihe ketandeliho lyepangelo lyaKalunga, opo ehala lyaKristus li gwanithwe: aantu ya holathane, ya kwathathane, ya yogathane oompadhi. Tashi ti: Opo uuyuni wetu u ninge uuyuni uumwayinathana muKristus.

Medhina lyegongalo eKatolika eRooma otandi mu halele ekwatho nuyelele wombepo ndjika yaKalunga, oyo Ombepo Ondjapuki, moshilongo shika. Ombepo yaKalunga nayi mu pe omukumo.

Ombepo ndjika nayi longe mu ne opo Kristus a uvithwe moshilongo shika. Ombepo yaKalunga nayi mu pe oonkondo opo mu ninge oonzapo dhaKristus momathimbo ngaka tu li mo.

Ombepo yaKalunga nayi mu monithe wo ondjila oompe dhokufala aantu yongashingeyi kuKristus muukriste wawo. Kalunga ne mu yambeke ye ne mu shige moshigongi shika. Ndika ehaleloyambeko lyandje nolyegongalo eKatolika alihe.



Tatekulu Henok Haufiku (72) omusitagongalo megongalo lyaTshandi ngoka ta li ngashingeyi oshikwiila shewululuko.

Okuza 1932-1938 okwa kala omulongisikola mOndobe. Omumvo 1942, okwa yapulilwa oshilonga shuusitagongalo nokwa tumwa metumo koTshandi, okuza kUukwanyama.

Pahokololo lyomuwilikingeleka Dumeni, tatekulu Haufiku ke shi awike omudhiginini mokulonga iilonga yopambepo. ihe omudhiginini wo miilonga yokomake. Omatungo ogendji taga longithwa moTshandi oga pitila komapepe ge. Elelo lyegongalo okwe li thigila miikaha yatate Junias Kaapanda.

ERIKSSON A GALUKA

Omukuluntutumwa gwEhanganotumo lyAsoomi muNamibia omuvalele yaamuka omusamane Olle Eriksson okwa galukile ishewe omasiku ngaka kegumbo, konima sho a li a ka fudha po kOsoomi pamwe negumbo lye, uule woomwedhi ne.

Tate Eriksson okwa li a talele po Ndowishilanda lyuuninginino naSwitzerland omanga inaa thika kOsoomi. Meme Eriksson naanona oya adhika ya tetekela.

Pamwe metalelopo ndika oya li ye ende naAmushanga gwEpangelongeleka nogwomumbisofi, omusitagongalo Petrus Shipena.

Omukuluntutumwa okwa holola nkene ookume ketumo taye tu dhimbulukwa hwiya-ka. "Yamwe oyu uvite kutya ongeleka nEtu- mo oya longa oshindji nando haayehe."

Kepulo kutya Asoomi ohaya longo ngiini oshilongatumo sho ye na omapya getumo o- gendjigendji, ohaya kwathwa kuuyamba wa- wo. Okwa ti kutya aantu mboka haya kwatha oshilongatumo oomboka unene oohepele.

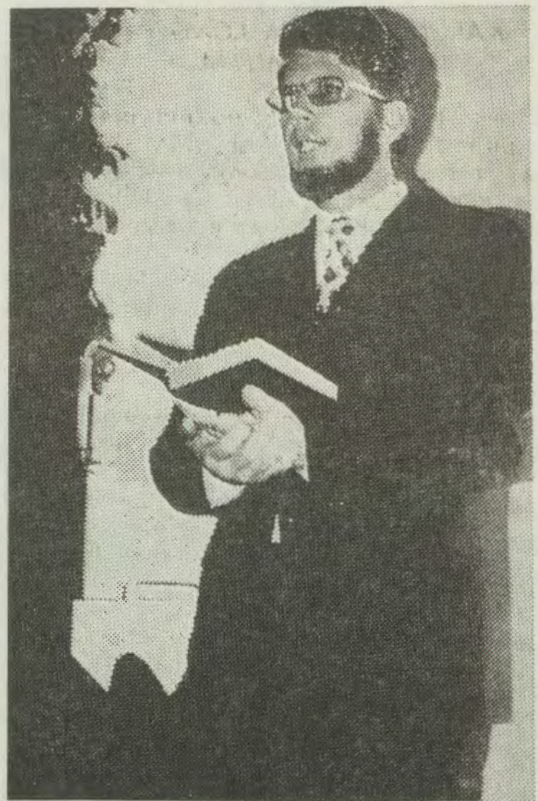
Ohaya ningi "oobasaara", elanditho lyiinima, opo ya gongele iimaliwa mbyoka taye yi tula metumo. Ohaya teleke wo oomwiha. Egonga- lo otali tokola esiku lyontumba li lile omwi- ha pehala lyontumba, opo kehe ngoka ta li nena ota futu. limaliwa mbyoka tayi moni- ka mo otayi ningi yoshilongatumo. lilandithomwa iikutu niikulya oya za ngaa maakwa- negongalo yoyene.

Egongalo kehe ohali kambadhala okukala nomutumwa gumwe, tali mu sile oshimpwi- ya lyo lyene moompumbwe dhe adhihe.

Tate Eriksson okwa holola wo nkene ya mo- nene ompito yokukala moshituthi shetumo nuumvo shoka sha li shi na aantu 6 000.

"Omukwetu" sho a pula tate Eriksson nkene aantu taye tu dhiladhila hwiya-ka, okwa ti: "Aantu yaahwiya-ka unene aagundjuka. ina- ya pumbwa okulombwelwa uukwatya womevi muka, oshoka oye wu tseyana nale".

Hwiya-ka okwa tsakanene wo nAanamibia ye vule 30 mboka taa ilongo mOsoomi "Oye li nawa na otaye mu kundu", osho omukulu- ntutumwa a ti.



Omukuluntutumwa Olle Eriksson

ETILOKALUNGA OLO EFINA LOUNONGO AUSHE

Ngenge ou li po ho ilikana kutate Kalunga nokOmukulili nena aishe oto yi wedelwa ko: aunongo, eendunge, omaye- neenghono.

Hano tu kaleni hatu tila tate yetu ou e li meulu.

L. B. Hamata

OIXUNA YA LI OKU

Mefyo lOmukulili, moKaribib, otwa talelwa po neudo kuvakwetu vokOmbaye naSwakopmund.

Oshiwana eshi osha etelela Haimbili, Joël mOnghulo naKristty. Kombinga osha etelela evangeli lOuhamba mokati ketu.

Enenediladilo ola li OHOLE na OSHILI. Tate Joël e tu popifa, nokuholola kutya kape na sha shimwe she va endifa kakele kohole yomuKristus Jesus. Meme Kristty a holola, kutya oshili otai mangelula ndee tai ku ningi omutumwa.

Omaimbilo a li a landulafanifwa nawa lela, oo a li komanyakwa. Ngeno tuu omwenyo okwa li tuu tau ka fyuululwa ngaashi eengobe moshiyandjelo, ngeno oku ohai ti kakwa li xuxwa inai lotoka nahandja.

Otwa udifililwe komaimbilo; otwa ilikanenwa, twa kumaidwa; otwa tuwa omukumo; otwa hambelela pamwe molupe lomaimbilo nomapopifo.

Mboli otwa pumbwa okulonga oshilongatumo yo ke- ongalo neongalo nokovakriste, kovasheki nokovalikukutiki.

Iyaloo Vambayee, kulupeni nomesho, omayoo fye tu mu taafinine. Kalunga na xwamife ohole yeni, na- tango! "Tyetu, bee." Ovaswakopmunda, Namhongo ne mu papatele mondjila ei!

Kalunga na hambelelwe molweni ovamwameme va- Swakopmund naMbaye, eshi ohole yeni munye ye mu fikifa fiyo opopo, okuuya mu tu udifile ngahe- nya. Efiku linya olipe momadiladilo etu. Iyaloo, akutu- kutu hewee!

Ouwa nepuniko nai shikule oshinghoti sheni.

Omufita I. Hamuyela



KALUNGA OKWA LONGELE NDJE IIKUMITHA

Osha li 2 lyAguste 1976, potundi ontimulongo ya pititha 45, ongula, oshihauto shetu moka twali mo sho sha kandoma, mondjita (popépi nOgongo) okuya kEendobe, kOngandjera, hoka kwa li taku dhikwa egongalo epe.

Omumwameme Tomas Filippus Auene ngoka a li ta hingi oshihauto okwa hulithile mpoka ombaadhilila. Ngame nAina Amakali otwa hupu.

Sho twa yi mondalaye onda dhimbulula kutya omuhingi okwa nyengwa kashona koshihauto. Onda tege e shi galule ko. Ohaluka o-wala sha lala olupati. Sho sha gundjile onda zi mo,nda humbata okampunda kandje hoka nda li nako, ongomuntu ta zi mohotela. Inandi kanitha omadhiladhilo gandje; no inandi pogonyonwa nando kashona.

Mbalambala onda tala mpoka pe na yakwetu. Onda dhimbulula kutya omuhingi okwa gwilwa koshihauto komutse. Onda kambadhala okutumba oshihauto, ihe osima. Onda ithana omusamane Martin Mateus, Omukwambi, ngoka a li popépi sho oshiponga tashi ningwa, a kwathe ndje, ihe osima inatu vula sha.

Aasolotati ya S.Africa oyo ya kutha ko oshihauto komumwameme Auene. Ethimbo ndyoka okwa adhika a ya nale.

Aina okwa umbwa mo moshihauto oshikako shontumba. Oindjina yoshihauto oya gwa mo; omagulu agehe yokonima oga topa; omakende gasho kamu na nando limwe.

Efano lyetu lyokuthaneka olya yonwa pothilu; iipakete yomambo mbyoka twa li twa humbata iinyanyu yowala.

Omuntu oto kumwa kutya otwa hupile peni nomolwashike sha ningwa.

Hambeleleni Omuwa oshoka Oye omwaanawa. Oshoka esilohenda lye ohali kala aluhe, nuudhiginini we komalualo nomalualo.

A. W. Amutenja

Kalunga Tate tu kwatha eitaalo lya kola netegameno lyi inekela Kalunga ho lokjithile aana yaantu omvulo ombwanawa nekwatho muudhigu li shi kwiinikelwa. Omuwa, ethimbo pamwe olya thikana? ligwana ya tameke okukondjithathana, iita, oonkunda dhomalugodhi otadhi uvika koombinga noombinga. Ihe Omuwa ngele nani ethimbo lya thiki natse wo ino tu dhimbwa tu ninge aahogololwa yoye momwenyo gwaaluhe.

Eeno, Omuwa zimina ngu tye nonando iikulundundu yi teke po noondundu nando dhi dhikuke po, esilohenda lyandje itali kanduka po we pungoye no itandi mu etha oothigwa, ondi li pune sigo ehulilo lyuuyuni.

Abraham Nekongo

OKWA HALA OKUDHIMINA PO NANDO A KANITHA OKWOOKO

Oshilalo osha li oshinene komwenyo okudhiladhila nkene nda kanitha oshilyo shimwe powalawala. Okudhimina po ngoka e shi ningile ndje, osha pula ndje ekondjo edhigu. Ihe Kalunga okwa pe ndje ngaa onkondo oku shi ninga.

Meme Maria Timoteus Ambinga, osha a hokolola komukwetu, uudhigu mbuka a kala nawo mehulilomvo lya zi ko.

Omulongi Maria, okwa kanitha okwooko akuhe moshipangelo shaNadjokwe, oyo a hupithwe kuuzigo mboka wa li pokutaandela nolutu aluhe. Uuzigo owa za moshilalo shelumato komunwe gwokoshikaha, mangu kwa li ti ipopile keponokelo lyamukwawo, ngoka ya ludhike naye omaludhi omawinayi.



Omulongi Maria Timoteus Ambinga

"Kandi shiwo ngashingeyi kombinga ye kutya oku uvite ngiini. Ngame ihandi mu dhiladhilile we sha, nando uuwehame woshilalo, inau pwa po natango" osho a ti.

Kombinga yeyakulo lye moshipangelo, meme Maria ote shi hokolola nepandulo. Nando ita dhimbulukwa nuupu mboka ya li taye mu wiyauka, sho ye mwenne ta ti, kutya ethimbo olihndji okwa kala a kanitha ontseyokoneko, oku na omadhina ngoka ta tumbula koshito.

Oodohotola Hannu Kyrönseppä naTomas Iuhwa, omadhina gawo okwe ga tumbula nesimaneko enene, sho ye mu kwatha moshiponga she. Okwa gwedha ko a ti:

"Oosesta, aayakulipangi naakalele amuhe mwa yakula ndje, otandi mu pandula. Omusita gwetu Stefanus Mvula ngoka a talele ndje po olwindji osho wo tate Tomas Kalumbu, ekundo lye olya thiki pombete yandje".

"Otandi mu tumine mpaka ekundo ndyoka nde li pewa moomposi, Eps. 55, mu kale hamu li lesa pamwe nangame neimbilo mEhangario 482".

Moshipangelo meme Maria okwa kala mo okuza 27 Maelitsa sigo 8 Juni 1975. Okwa hokanwa noku na aanona yane.

Onda shekuna eifano lange

Omunhu keshe kombada yedu oku na eifano, eliudoshilonga. Peemhito dihapu oshinima eshi oshi li mohonde, ile tu tye oshi li mokuhashiiva kwetu.

Okaana nghe taka kulu oke na eliudo eli, kutya ndi longe sha. "Ndi longe sha" ou, fikulimwe ke na manga onhumbu kutya oshike. Ndele oshinima ashike shomalalakanodiladilo.

Peemhito dihapu "ndi longe sha", oku na ngo elalakano, omolwaasho hatu mono moudano ounona otava ningi ovapangeli, oondohotola, ovalongifikola, ovafitaongalo, ovahakuli, ovashingi, n.sh.t.

Eshi otashi holola ngo kutya okaana oke udite kutya oke na okuninga sha kombada yedu. Kape na nande omunhu ha dulu okukala nombili manga ehee na oilonga. Omupopi umwe okwa tile:

"Omalutu e na oukolele inaa pumbwa oilonga". Eshi otashi ti: Olutu ihali dulu okukala li na oukolele manga ihali longo.

Eifano lomohonde ile olo li li mkuhashiiva otashi dulika omunhu ite li nongele. Ohaluka wa ninga omudiakoni, nande ino shiiva sha enda ngahelipi. Oto ka dimbulukwa ashike eshi wa hokwa oshilonga osho u li musho, noto tumbula nokuli kutya "Osho naanaa oshilonga nda hala eshi!"

Peemhito dimwe eliudoshilonga ohali nyikifwa oluhodi. Pamwe owa li wa hala okuninga omulongi wofikola yOsondaxa ndele ponhele yasho owa ninga omukulunhu weongalo. Nena ou udte nee "onda shekuna eifano lange". Omolwaasho mokulonga kwoye oilonga youkulunhu weongalo oto longo noneye, shaashi oto diladila halo eifano loye.

"Ngeno onda ningile omupangi, ngeno ohandi longo nouidiinini shaashi olo eifano lange".

Eshi oshe tu fikifa nee pondodo oyo yokupula kutya eifano ohali dipeni hano? Pamukangha wOmbibeli Kalunga okwa pa omunhu keshe oilonga ya yooloka. Kain omunamapya, Abel omunaimuna. Ovalevi ovafilishisho velongelokalunga moshiwana, ovakulunhu ovaleli voshiwana. Konima ovaprofeti va tulwa po va ninge ovakumaidi voshiwana.

MEtestamenti Lipe ohatu hange mo eeshalinghenda dOmhepo: ouprofeti, eyakulo, okulonga ovanhu, okukumaida, okuyandja, okukwatelakomesho. Ngenge Kalunga oye ta yandje omaifano oilonga, ote tu pe tuu mbela osho inashi tu wapalela?

Eudeko

Uunene omunashilonga ota pumbwa a kale eudite ko eifano laye. A kale e shii eendjila dalo neengaba dalo. Oshike osho e na okuninga noshike osho ehee na okuninga. Omolwaashike e na oku shi ninga nomolwaashike ehee na oku shi ninga.

Omunhu ngenge ke udite ko kutya okukala omulongi mofikola otashi ti shike, ina wana okukala omulongi. Martin Luther mOkatikisa kaye kanene ota ti:

Omufita oo iha lesa eendjovo daKalunga okwa wana okuninga omufita woiungulu no-weembwa, ye okwa wapala okulyataulwa pamwe nomapumba eendoongi.

Eshi otashi ti ashike omunashilonga ou ita longo ngashi a teelwa a longe, oye okwe lilongela okweekelwashi.

Nomupiya winya a shiiva ehala lomwene waye, ndele ine lilongekida, oye ota dengwa unene.

Oiponga moilonga yetu

Oinima oyo tai tu imbi tu wanife oilonga yetu nawa oyo ngaashi:

a) *Ondjikilile*: Omunhu ota ikilile oshilonga shaye ndele ita tale vali ondilo yasho.

Omuudifi ihe lilongekida vali eudifo laye, osheshi vati okwa ika okuudifa. Omulongi ite lilongekida vali oilongwa yaye osheshi vati okwa ikilila okulonga oilongwa oyo.

Omupangi iha pula vali ewiliko laKalunga osheshi vati oilonga okwe i pyokola nawa.

b) *Ohole yeliko*: Fimbo itandi pewa ondjabi ya ondoka naame itandi lihepeke nokulonga nawa". -Eifano ola dja kuKalunga, ondjabi oya dja movanhu.

c) *Ohole yokulihola mwene*: -Eshi osha kwa-telela mo onyalo. Omunhu ota hokwa okufuwifa po olutu lwaye ponhele yoku li longifa. Omutaleli ita talele.

d) *Eshunomonima*: -Eshi otashi ti ekwatafanonaKalunga ha yandje eenghono noma-yambeko kali po. -Omunhu iha indile, iha ende kOngoleka, iha lesa eendjovo daKalunga.

e) *Omhepo youhasha*: "Nghinako nasha."

Oshike tashi pumbiwa kovanashilonga

1. Etilokalunga
2. Okushiiva oshilonga shaye.
3. Ohole okuhola ovanhu
4. Oudiinini.
5. Oukumwe.

Apa ohai diladila unene meongalo, ovanashilonga nava kale kumwe. Nava longele kumwe, nava endafane, nava shiivafane, nava fimanekafane, nava popifafane.

Ngaha, otava dulu nee okutunga olutu lwa-Kristus olo eongalo laye.

Ndele ngenge keshe umwe ota shilile kombinga yaye noita tale mukwao, nena olutu lwa-Kristus otalu pombauka.

A. Hasheela

OKERSESA YAALONGISIKOLA

Okuza 29 Sept. - 3 Kot. 1976, otaku ka kala okersesa yaalo ngisikola oomeme **MENONGELO LYAAYAKULIGONGALO, ENGELA.**

Aalongi otaya ka pukululwa miinima mbika:

- (a) Elongo lyiikulya
- (b) Esiloshimpwiyu lyegumbo naanegumbo
- (c) Uundjolowele
- (d) Elongo lyokuhondja niikwawo yilwe

Omuwiliki gwaakiintu

W-Mpingana Amweelo

OMULONGI POSIKOLA

Omulongi oye oshiholelwa oshinene posikola, nosho tuu moshigwana. Mokugwanitha oompango dhosikola tango omulongi oye ta tegelelwa e shi ninge shili nuudhiginini.

Oompango dhosikola odho ndhika:

- (a) Aalongwa aluhe ya holoke posikola kuyele nopethimbo lyo opala.
- (b) Aalongwa ya gwanithe nawa iilonga ayihe yomosikola.
- (c) Aalongwa ya vulike shili kaakuluntu momagumbo nomoshigwana nokwiiutha komauthompango agehe eputudho.

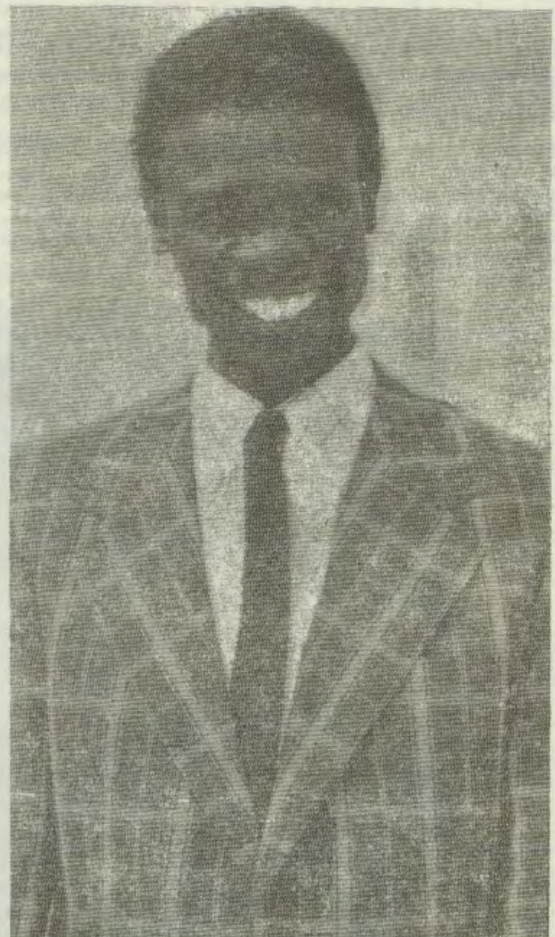
Nguka ogwo aguke omukalo tagu opaleke eputudho nomukanka gwelongo lyoshigwana shetu, na unene, etilokalunga nevuiko.

Aakuluntu yoosikola otaa hiywa nesimaneko ya tale shili kwaa kale eshundulo lyepatudho. Tango eputudho lyoshigwana omegumbo nopusikola, opo li kale lya yela. Aalongi naya gwanithe iinakugwanithwa yawo ayihe poosikola. Evuliko komukuluntusikola noke-tonatelosikola nokeiuvo ewanawa, olyo omukalo gwa pumbiwa.

Omaupyakadhi opo ga hulithwe po, tango aalongi natu gwanitheni iilonga yetu ayihe nomoshigwana shetu wo.

"Mwaa na ndje kamu vulu okulonga sha", Jesus osho ta kumagidha.

Abel Nandjila



Omusitagongalo Matti Endjala, Elondo, oku li omuuvithi omunene mu ELOK, moondjimbo.

Onyuni omu tu li mo, owovalumenhu. Okudja konalenale fiyo opaife, omulumenhu oye ta pangele oshiwana neumbo. Omukainhu okwa fiilwa po oilonga ivali aike; okudala onunona nokutelekela omushamane oshifima tashi nyika nawa.

Omukainhu ite lineekelelwa oinima tai linyenge moshiwana. Oshoongaleleleka shonale shaNikea o-mudo 325, osha li she lipula meenghundafana dasho ngenge omukainhu oku na tuu omwenyo. Efimbo ola lunduluka paife. Paife oukadona otau longwa meesekundosikola, nomeefikola dokombada, naanaa ngashi ovamati. Omulongi omukainhu ota longo oshiwana ngashi omulumenhu. Eesesta otadi wilike oupangelo, "oindunge yovakainhu" otai yandje omayele momalelongalo.

Ovakulukadi vahapu noukadona otava yakula meefitola. omukainhu okwa dja mepata peembiya, nde a ninga omukwafi ta wapalele omulumenhu nomoilonga ikwao yo.

Melunduluko eli li na ekwatafano nomaumbo neehombo nouteku, ovakainhu vamwe ove udite kutya itava wana okuyakula ovashamane vavo pefimbo ve li kOushimba. Vamwe vahapu ove udite kutya nande va mona oisho noinakuwanifwa i lili noku lili ngaha, natango tuu ove li mounyuni wovalumenhu, kave na emanguluko moilonga yavo.

Omolwelunduluko la tya ngaha lefimbo, oshilonga mokati kovakainhu mOngeleka ei nomeengeleka dikwao yo, osha tamekwa. Moshilonga eshi qiponga ivali otai hangika musho.

a) Ngenge mOngeleka nomomaongalo tamu talwa kutya opu na eengudu mbali ovakainhu novalumenhu, tadi kondjifafana, nena opo pe na oshiponga opo. Mhepo Muyapuki oye omulumbakanifi wovannhu.

b) Oshiponga oshitivali oshi li popepi ngenge ovakainhu tava hokwa ashike okukala moyoongalele yavo tava ka hafelafana mehanganu lavo, nde tava dimbwa elalakano lohilonga shOngeleka okutwala evangeli komunhu keshe.

Ongeleka oi na oshisho okumona omukalo wokulonga pavangeli mounyuni ou womalunduluko. Omulumenhu na tambule omukwafi waye omukainhu, ye omukainhu na mone emanguluko levangeli momwenyo waye a kale omukwafi meumbo, moshiwana nomOngeleka paeshalinghenda daye adishe.

Omulongi Sakaria Nghi-kefelwa, ngoka opo a zi moomango. Okwa kala omasiku ge vule 90 moomango dhomatanga gaa-kwiita ya S. Africa. Oye oku li omushangi gwomambo melaka lyOshixwaga nOshingongolo.



Mu ELOK, elalakano moshilonga shovakainhu limwe alike; okuwanifa ehalo laKalunga eli kutya aveshe va xupifwe. Naashi otashi ningwa yo kodaka yomunhu.
Omuwiliki wovakainhu mu Elok
Ra:li Seppala

KOMAONGALO AESHE A ELOK OSHOYO EENGELEKA DIKWAO MOWAMBO NOKAVANGO

Neudo mofikola yovapofi neembolo mEngela oha tu ka kala tu na EEKERSESA luvali dovapofi ovo inava mona omhito yoku tambulwa mofikola ei, ile ovo va li mo, ndele paife ove li komaumbo ile moilonga yasha.

Elandulafano lEekersesa otali ka kala ngaha:

1. Okutameka 3-14 Nov. -76.
2. " " 15-30 Nov. -76.

Ohatu indile ovafitaongalo, ovadali oshoyo omuyambididi keshe wovanhu ava, u kwafe moshilonga eshi shoudiakoni, opo u tale nghe- ne ovapofi meongalo loye, meumbo ile omuyakulwa waye, na okufika kuimwe yomeekersesa edi mbali.

Ouyelee keshe we u pumbwa, nyolela ile u pule kEnongelo lOvoyakuliongalo, Engela mOfikola, Omupanda.

Ohandi mu kundilepo ovamwameme.

Paulus Ndjala



Omuyakupangi Kaino Malwa, Naemi Namboa nomupangi Eva Mwandingi (okuza kolumoho). Ayehe oya li ya tamanekelwa edhipago lyomukwaniilwa Filemon Elifas. Mokukundathana nOmukwetu oya holola nkene taya hambelele Kalunga sho ya mangelulwa nando oyu uvite ohenda molwayakwawo mboka inaya mangelulwa natango.

Omupresidende wa SWAPO, omushamane Sam Nuyoma. Ehanganu laye ola pewa omafiku aa omuvalu R75 000, kehangano leengeleka mounyuni, okukwafela mekondjelo lemanguluko.



S. AFRIKA OTA KUNU OKWAAUVATHANA MAALUUDHE, NUYOMA A TI

Omusamane Nuyoma metalelopo lye muMoskwo okwa holola omakankameno gaaludhe yaSuidwes, kutya inaya tsa ondumbo nokukundathana na S. Afrika ngele ota gwannitha tango iinima mbika.

- 1) Aasuidwes naya pewe ompito ya tokole onakuyiwa yawo yene mwa kwatelelwa oshilongo shawo ashuhe.
- 2) Oonkwatwa dhaanapolitika adhihe nadhi mangululwe naakwiita ya S. Afrika naya yele mo thilu moSuidwes.
- 3) Swapo oye awike na talike omukalelipo gwolela gwaaSuidwes ayehe.
(Suidwester 16.8.1976)

MOMUTUMBA GWASUIDWES KAMU NA OSHILI - WINTER

Omumbisofi Colin Winter, gwongeleka yaAngilikana, ngoka e li ngashingeyi muupongekwa mwiNglanda, okwa gandja omasiku ngaka uusama komusamane Dirk Mudge, omupehanashipundi gwokomitiye yomutumba gwonakuyiwa yaSuidwes, ngoka tagu ningilwa moVenduka.

Pantumwafo yomontaneho ndjoka omumbisofi Winter a nyolele omusamane Mudge oya leshwa ngeyi:

"Pamadhiladhilo gandje omutumba gwomoSuidwes kagu na oshili, oshoka ogwa thikama maantu mboka kaye shi aakalelipo yomwaalu gwoyendji. Shika osho uungame, oshoka oshili kayi po. Oshili otayi monika owala uuna pwa ningwa ehogololo lya mangu-luka moshilongo shetu, uuna omahalo gaantu taga tseyika".

Okwa tsikile ko ishewe ta ti: "Ne omwa ulika konakuyiwa ndjoka ya hepa paupolotika, yetiko lyombinzi. Ngame ongomunangeleka otandi ka kala noku mu kondjitha moshinima shika, osho wo molwonkalathano yeni ombwinayi ndjoka mu lile po".

Ndika olya li ethimbo lyokweetha po shoka sha kala "itashi vulika", osho omumbisofi Winter a ti.

(Advertiser 9.8.76)

MUINDIA OYENDJI OTAYA IDHIPAGA

Konima yominute hetatu kehe mulndia otamu idhipaga omuntu osho wo mominute kehe ohamu kala omuntu ta kambadhala okwiidhipaga.

Oshitatatu shomaaidhipagi mbaka ohashi holoka maagundjuka ye li koho yoomvula 18, omanga opelesenda dhi vule 60 dhaamboka ye li koho 30.

Omaidhipago ngaka ohaga ningwa unene kaalumentu unene moondoolopa ndhoka dhi li popepi nefuta.

Ashihe shika ohashi zi aniwa muuvu, oontamanana dhomomagumbo, omalalakano gohole inaga tsakanithwa, endopo mekonakono nenge iilonga inayi monika. oongunga, oontamanana pokati komusamane nomukulukadhi nenge etidho miilonga.

Oshinima shika oshi li po sha eta epulo enene, kutya otashi hulithwa po ngiini. Ope na onkambadhala pu dheulwe aakwiita oyendji opo ya totatele mboka ya hala okwiidhipaga. Ometa ndjoka ya li ya ningwa po opo aantu ya geelwe mboka ya hala okwiidhipaga inayi kwatha sha.

(The Star 6.8.76)

India oshilongo shi na uunene woombine kilometa 262 275. Oshilandopangelo osho New Delhi. Omu na aakalimo ye thike 547 367 926, payalulo lyomumvo 1971. Ohashi adhika muAsia. Omupangeli gwasho oministeli, omukulukadhi Indira Gandhi.

PAMWE ETOKOLO LYA S. AFRIKA ITALI KA TAAMBWA KO

Edhiladhilo lya S. Afrika okugandja ondiipangela kuSuidwes 31.12.1978, osha limbilika kutya otashi ka taambwa ko tuu kiilyo yo V.V.O.

Amushanga gwoV.V.O. Waldheim okwa tseyithilwa nale oshinima shika. ligwana yahangana oya li ya lombwele S. Afrika a ze mo muSuidwes ko ku ningwe ehogololo lya mangu-luka metonatelo lyo V.V.O.

MU S. AFRICA, OMBIGA OTAYI FULUKA NATANGO

Omakuyunguto oga holoka ishewe molukanda olunene lwaSoweto muJohannesburg. Aantu ye thike konyala 20 000 oya ende ya humbata omapakete nomapandela hoka ya nyola omadhiladhilo gawo.

Mokweenda kwawo omatungo niyenditho oye yi fike po. Aapolosi ya S. Africa oya kambadhala okuhalakanitha engathithi ndika. Oomwenyo odhindji otadhi kanene esiku kehe miipotha mbika.

Shoka sha halika unene kaantu osho emangululo lyaamboka ya li ya kwatwa moshipotha shoka sha ningilwe muJuni 16, moka mwa kwatelwa aawiliki 4. Moshipotha shika aantu 176 oya li ya dhipagwa, 1 139 oya ehamekwa, omanga 1 298 ya kwatwa.

Oonakuvala Aasoweto otaya pewa ngashingeyi omusama kaanona yawo sho ya kala ethimbo ele yi iyetshela koho yepangelo lyokatongotongo.

Aanashipotha oya hala wo elongo lya mangu-luka tali dhengele lya faathana naandyoka lyaatiligan.

(Daily Mail 5-6.8.1976)

OWE SHI UVA TUU?

lipundi, oombete, omamate, iikwaradio niipumbiwa ayihe yomokombitha otayi monika kondando ombwanawa pOSITOLA YIIPUNDI, popepi nOndjondjo Hoosaila mOndangwa. Etelela wo oradio yoye ndjoka ya teka.



**Pata Kaishala
kaNangombe
(Heimerikx).
Ehokololo tala
kemandja 1.**

OMUHEPAULULI WOUNYUNI, ILE OWAKRISTUS

Ohandi kala unene ndi udite onghenda eshi hai tale ovanhu vahapu hava kala ve litula shili mukupwilikina omahokololo oiningwani ma younyuni. Nongenge omunhu okwa li e na oku ta i, otashi mu imbi okuya ko.

Ndelene ngenge eendjovo daKalunga tadi to- rigwa, tadi hokololwa, omunhu oku wete ta manerwa po efimbo. Tu kongeni tete oshilongo shaKalunga nouyuki washo, opo nee aishe tu i wedelwe ko.

Tu tamekeni naai tai tu pe elao, eendjovo daKalunga. Tu di hokololeleni vakwetu, unene ovo tava nyengwa oku di shiiva.

M. M. Sh. Hanai

OSHITUTHI SHAAVALI MONKURENKURU

Mosoondaha yeti 8 Aguste 1976, megongalo lyetu lyaNkurenkuru otwa uhalele nenyanyu enene, sho twa li twa longoekidha oshituthi opo tu tsaathane omukumo muukriste.

Aanashituthi oya li yi itopola moongundu mbali, aasamane naakulukadhi. Ongundu kehe oya li ya etelele ekundo lyayo.

Konima yaashoka sha etwa po, opwa umbwa ongalo pamathigathano, mokusoleka kehe yamwe oshiketha shawo.

Aakulukadhi oya umbu R 83,67, oshikombo nondjuhwa, omanga aasamane R 75,01.

Otatu halele wo oonkondo oongundu dhomagongalo agehe ga ELOK eyambeko. Aasamane yomegongalo lyetu oyo ya li ye tu kangela omumvogu, ihe nuumvo oomeme oyo ya sindana. Kalunga ota tegelele tu mu pe, sha oshoka okwe tu pa oshindji (Maleaki 3:10).

Peha lyoongundu ndhika mbali
Omuteologi Aino Amutenja

OMUKWETU

Oye oshifo shOngeleka onkwaevangeli paLuther yomOwambokavango. Ohashi nyanyangidhwa mOniipa. Omukuluntu gwoshifo omumbisofi dr. Leonard Auala. Amushanga Rev. Sebulon Ekandjo.

Ondando yoshifo komumvo muSuidwes nomuAfrika alihe R 2.00, kombanda yomafuta R 4.00.

Oondando nomambesitelo naga tumwe kOmukwetu Oniipa: P/B. 2013, Ondangwa.

Omatseyitho agehe gomuntu mwene ohaga futilwa kumwene.

OWAMBOKAVANGO CHURCH PRESS
PRIVATE BAG 2013. ONDANGWA 9270