

OMUKWETU

Registered at the General Post Office as a Newspaper

10c



Oshitayingeleka shOndonga moshituthi shEtumo mOmandongo 1976. Ehokololo tala kep. 4

Oshinakugwanithwa shongeleka mokukalathana nelelo moka yi li mo oshinipo?

Onawa ngele otatu dhimbuluthathana kutya, Ongeleka oyo shike. Kutya Oyo olutu lwaKristus muuyuni auhe. Ayehe yi itaala Jesus Kristus Omuna gwaKalunga omunamwenyo oyo taa ithanwa Ongeleka, eliko lyOmuwa (van die Here of wat van die Here behoort).

Ongundu ndjoka yi na oshinakugwanithwa shayo: Okuuvitha evangeli, nokuyakula omuntu aguhe. Aantu mbaka ayehe miigwana ayihe oya hanganithwa kombinzi ondjapuki noyo ongundu yaantu taa vulika kuJesus.

Jesus ota kala pamwe nayo sigo aluhe, Mat. 28:20. Omusita Omwaanawa gwongundu ndjoka, Joh.10:11-14. Ekwatathano lyoshilyo kehe oli li meitaalo, okwiitaala Jesus.

Ehala lyOngeleka (moka yi li mo).

Ongeleka oyi li muuyuni; oyi li wo mekondjo manga (strydende gemeente). Ngele tatu popi uuyuni otashi ti: onkalo yaantu mboka kaye na Kalunga, aakondjithi yaKalunga noyoshilonga she kehe.

Uuyuni kau na omwenyo gwomuKalunga. Otau pangelwa kusatana; otau lalakana opo ooitaali yaa thike kesimano, kegongalo lyaa-yehe megulu. Omasiku gokukala mo muuyuni oga yalulwa (70-80), (Eps.9:10).

Uuyuni owo oshinima shokathimbo owo etopoko naKalunga, omupya, ehala mpoka omuntu ta kala po u uvite okwa gwana nando ke na Kalunga. Uuyuni owo uudhigu auhe mboka tau adha Ongeleka; uuyuni owo oonkondo dhontumba dhopanyama, olwindji tadhhi kondjitha Ongeleka.

Monkalo ya tya ngaaka omo mu na ihe EHALA LYONGELEKA. Omo yi na okukala ethimbo lyuuthwa. Ehala lyOngeleka oyo okukala muudhigu momahepeko, mekondjo n. sh. t. muuyuni mbuka UUYELELE mokati KOMILEMA.

Omaudhigu gOngeleka

Oshinakugwanithwa osho okulikolela Ongeleka yaKristus oomwenyo dhaapagani nodhaashunimonima, Ehol.22:12. Oompumbwe dhayo: eitaalo, ohole neidhidhimiko (Rom.5:3-5).

Oshilonga shayo okukondja shili, opo iilyo yomagongalo olutu lwaKristus, yaa ye muuyuni. Oyo omugameni, muyo omu na omwenyo. Omuntu aguhe omwenyo nolutu otalu lalakenwa okukwathwa kOngeleka.

Ongeleka otayi landula iilyo yayo shaampoka tayi kala po: omondolongo, moshipangele, kiilongo, mondjala, moluhepo kehe; osho oshinakugwanithwa shOngeleka okukwatha ayehe.

Iiyakulitho yayo: OHOLE (agape), OMBILI, ELAKA ETOYE. Oshinakugwanithwa shayo o-

kukala wo ya kola noyi na uudhiginini mokulonga oshilonga shayo komuntu kehe. Oyo ONZAPO yaKristus momahepeko nomomathimbo omadhigu. Otayi kondjele uukumwe, notayi tungu oontopa opo omatopoko pokati kaantu yaKalunga gaa kale pokati kaKalunga naantu ye, nopokati kaantu naantu, ihe pu kale Ongeleka yaKristus yimwe muuyuni waKalunga gumwe.

Oshilonga shOngeleka osho wo okupopila oshilonga shOmukulili mohofa yuuyuni mbuka, oshoka otashi tamanekwa, 1 Joh. 5:19-21. Osho ano oshilonga noshinakugwanithwa shOngeleka okufala Kristus komuntu kehe nokuningoka tati ite mu pumbwa. Oshilonga shika oshoshilyo kehe mOngeleka.

Oshilonga shOngeleka

Pehulilo otatu tala omaudhigu gongeleka. Osho oshilonga oshidhigu okutula nokukoleka oitaali momaudhigu. Osho wo oshidhigu okupopila ayehe aathiminiki, naathiminikwa, aapeki noonakuhepekwa.

Ihe Ongeleka oyi na oku shi ninga nando omuudhigu, nokukonga ondjila nokumona wo ewiliko lyOmbepo moshinima kehe.

Onawa wo oku shi dhimbulukwa kutya halwo lwotango omaudhigu ga adha ongeleka vopomathimbo getu. Okuza ketameko ongeleka mehistolli iyayo oya adhika komaudhigu nokomahepeko gamwe ga fala ahokololambinzi meso lyopalutu, 1 Petr. 4:12-16.

Shika otashi ti, ngele otu shi shi shili omukanka nkoka Ongeleka ya tungilwa oko tayi hepekelwa, nena tu tsaathaneni omukumo nokugalikana opo tu pewe oonkondo okutsikila muudhigu twaa na uumbanda nokugwanitha ehala lyaKalunga nando shi kale tashi tu fala meso lyopalutu, nomahepeko galyo.

"Kalunga kwatha ndje oonkondo opo ndi sinde omahepeko".

Ongeleka naye ilongekidhile ano omaudhigu, naye longekidhe nawa iilyo yayo nokuvi paluthitha EVANGELI, opo yi kale mokuumbata omaudhigu sigo Jesus te ya, 1 Petr. 5:10, Mat. 5:11.

K. Dumeni

ELOK TA PUMBWA OSHINDJI 1977

Ethaneko lyelongitho lyiimaliwa mOngeleka ya Elok omumvo tagu ya olya adha R 332, 000. Nguka omwaalu omunene moku yeleka omimvo omikwawo dha piti.

Omumvo 1975, ethaneko ndika olya li ashike R 131,016. Ekwatho hali zi kEhanganotumo lyaSoomi ohali siikile shono omagongalo mpa-ka itaaga vulu oku shi tsakanitha.

Ihe pahokololo lyomudhiginini gwiiniwengeleka omusitagongalo Matias Ngipandulwa, omagongalo aluhe otaga koko mokutsakanitha oompumbwe dhOngeleka yago. Omagongalo 32 gomomagongalo 52 mOngeleka 1975 oga li ge shi ningi nawa.

AALONGWA YAMATILIKA MOSHIGAMBO 1977

Aalongwa aape otaa ka taambelwa moforoma ontine (Form 4) omumvo tagu ya (1977) mOshigambo. Mboka ye na ompito yokutaambwa, oyo mboka ya pita ekonakono lyoforoma ontintatu nonkatu yotango noya pita momalaka ngaka Oshimbulu nOshiingilisa noopersenda 50 nenge dhi vule po.

lilongwa moforoma ontine otayi ka kala mbika tayi landula mpaka:

Oshimbulu

Oshiingilisa

Mathematics (mOshiingilisa)

Biologie (mOshimbulu)

Geskiedenis (mOshimbulu)

Physical Science (mOshiingilisa) nenge Bybelkunde.

Tuma eindilo lyye nonzapo we yi mono muJuni 1976 kondjukithi:

Oshigambo High School

Private Bag 2026

Ondangwa

9270

Omukuluntusikola

Okudhiladhila memanguluko, oshinima oshinene. Ihe okudhiladhila memanguluko, mondjila, osha simana shi vule oshikwawo

“Okupita ekonakono, kaku shi okumana nokuhulitha eilongo, ihe okweegulula omweelo gwoonkatu dho-komeho,” osho omuwilingeleka a lombwele aalongwa mosikola yokombanda mOshigambo omwedhi nguka.

Moshituthi shegandjo lyoonzapo dhaJuniolo kaalongwa 23 mOshigambo omo moka omuwilingeleka tate Kleopas Dumeni a fatulula oshilonga sheithano lyaKalunga komuntu.

Tate Dumeni okwa ti kuya, okuhogolola eithano kashi shi oshinima oshipu, ihe megalikano nokek-watho lyombepo yaKalunga, omuntu oto mono shoka Kalunga e shi ku ithanena. lilongayakulo yetu ayihe koshipala shaKalunga oyi thike pamwe. Omuwiliki okwa gwedha ko a ti, eithano otali ya komuntu kehe gwaKalunga, omuntu a tsakani-the oshilonga shaKalunga mokutaandelitha etumwalaka lyaKalunga moshilongayakulo she.

Payeletumbulo ndyoka li li moshipalanyolo e li leshela ketungo lyosikola yokombanda muSweden, tate Dumeni okwa ti:

“Okumona oshilongaithano pahalo lyaKalunga nokukala mo pahalo lye, osha simana shi vule ayihe.”



Oshitayingeleka shOndonga mOmandongo

Osoondaha ndjika yeti 11 Juli 1976, oya uthwa owina kOngeleka yOwambokavango, okudhimbulukwa aatumwa mboka ye ya lwotangotango mOwambo eti 9 Juli 1870, momagongalo gawo.

Yamwe yomiilyo ya Elok ye vule 2000 oya li ya ngala mpoka pwa lyata tango oompadhi dhomukundanekeki gwonkundana yenyanyu, Jes.52:7, mOndonga okudhimbulukwa Oshilonga shEtumo.



**Omuuvithili gwoshituthi shetumo
Rev. N. Shinana**

"Esiku ndika enene lya simana kutse nokomapipi ta ge ya. Mulyo uuyeleele washili owa tameke okumini-kila kombanda yigwana yetu" osho omuyevangeliste gwongeleka Natanael Shinana, a tumbula pa Jes.52:7. Okwa tsikile ko ishewe ta ti:

Omilema odha sindwa kuuyeleele. ligwana yetu oya kala ya pikwa ya kanitha ombili molwiigima itatu.

(a) Omukwaniilwa gomilema okwa tula uutondwe pokati kaantu naKalunga nopokati kaantu yoyene.

(b) Oohapu nomahokololo giifundja oga pangele. Uumbanda owa siikile oomwenyo dhaantu oshoka onkundana yashili kayi po.

(c) Uumpulile owa inekelwa noonganga odha taneke uutondwe pokati kaantu.

Peha lyomushiti aantu oya simaneke iishitwa. Oompadhi ombwanawa noondjelele odha nyata lwotango mpaka. Mpaka opo pwa uvithilwa lwotango kutya Kalunga koye ngoka ku mu shi, oye omukwaniilwa. Elaka lye ya tali popiwa mOshisherero.

Nonena otatu popithwa kohapu tayi eta ombili, ku tya Kalunga koye Elok, oye omukwaniilwa. Ohapu ndjika oyi na omadhiladhilo geli muule hangashi hatu dhiladhila. Kalunga nguka okwa hala e ku tume wu fale elaka lye ELOK. Osho omuuvithi Shinana a ti.

Tatekulu David Shihepo mekundo lye okwa yeke ohapu yaKalunga nedhiya enene lyokuteka omeya. "Tala kiikumitha, oompadhi dhomukundanekeki gwonkundana yenyanyu, odha lyata mOmandongo, ihe omuwilikingeleka kee shi Omumandongo".

Shika otashi ulike nkene ohapu yaKalunga tayi taandele, osho tatekulu Shihepo a tumbula.

Omulongi Toivo Tirronen okwa leshe ondjokonona yOmuyapostoli gwAawambo tatekulu Nakambale kanene (Martin Rautanen). Ehokololo otali ka holoka mOmukwetu.

Tatekulu Vilho Kaulinge, peha lyaawilikingeleka mokulesha Joh.2:1-9, okwa popi nkene aatumwa ya adha oshilongo shi na omeya omalulu, ihe onkundana ombwanawa ndjoka ye etelele oya ningitha omeya ngaka ga kale ge shi okulongithwa.

Okwa pandulo okukala po komukwaniilwa gwaNdonga Paulus Elifas. "Nguka okwa dhimbulula naanaa kutya oshilongo okwe shi pewa kuKalunga" osho tatekulu Kaulinge a pandula omukwaniilwa mokugandja kwe oshiholelwa oshiwana.

Okwa kumagidha wo Aawambo yaa tale ashike kaatumwa ongaamboka inaya makela muutoye mbuka.

lipopiwa oyindji oye etwa. Meme Raili Seppälä mo-shipopiwa she okwa gandja epulo ngele aantu ayehe oya ningi aakriste. Ngele hasho; omagongalo naga tale nawa oshinima shika, opo evangeli li uvi-thwe natango.

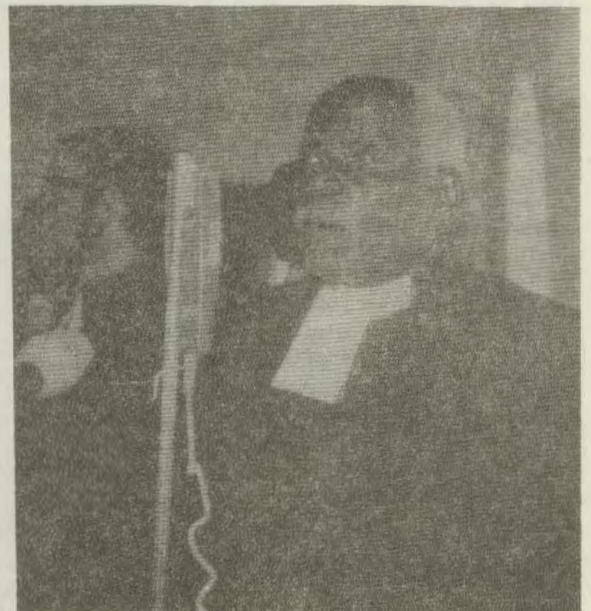
Aatumwa Aasoomi ye vule 30 oya li wo ya kala moshituthi. Oye ya komeho gaanashituthi taya ziilile kuuzilo hoka naanaa kwa li kwa ziilile aatumwa yotango. Konima sho ya imbi eyimbilo ewanawa, omupihakuluntutumba, omusamane T. Pentikainen, okwa gandja ekundo peha lyaatumwa.

Oondjimbo ombwanawa tadhii simaneke Omuwa, sho a dhimbulukwa Aawambo osho wo yalwe odha kala nokwiimbwa koongundu dholwiimbo.

Oywa li wo pwa ningwa ongalo yoshituthi ndjoka ya zi R150,50. Omagongalo gaNdonga oga li ga etelele shaandyoka ongalo yalyo.

Ngaashi naanaa esiku ndiyaka lyoshituthi shoovula 100 sho nakusa tatekulu Nangombe Sakeus Iuhwa Mpolo a tile "Nyanga nande funda okwena okwa nyenti." Aantu oya kala ya kuutumba momutenya ya tya tuu nye, uule wootundi 6.

Indeni ano, kangingeni aantu ayehe aalongwa yandje, mu ya shasele medhina lyaHe nolyOmwana nolyOmbepo Ondjapuki, ne mu ya longe okudhiginina ayihe mbyoka nde yi mu lombwele. Ihe ongame otandi kala pamwe nane omasiku agehe sigo ehulilo lyuuyuni, Mat.28:19,20.



Omusitagongalo kuku David Shihepo naye wo okwa li omupopi a simana moshituthi shoka

Auene e tu thigi po ombaadhilila

Oshituthi sholuhödhi otwe shi dhana ishewe mOshinyanyangidho petameko lya Aguste, omolwetembu lyombaadhilila lyomunyanyangidhi Tomas Auene waFilippus Auene.

Omusamane Auene okwa sile moshiponga shekandomo lyoshihauto, ontega nOgongo. Oye mwene kwa li ta hingi manga ta fala omambo, Elaka Etoye, kUuninginino eti 2 Aguste 1976.

Pamwe na ye okwa li wo naanashinyanyangidho yaali. meme Aina Amakali naAmbrosius W. Amutenja, amushanga mombelewa yOmukwetu, mboka ya hupithwa moshiponga. Omulandithi gwomambo Aina, oye tuu e ehamekwa kashona momutse nomothingo, ihe ota ti po ngaa hwepo.

Nakusa Auene, okwa longo ethimbo ele mOshinyanyangidho. Omambo ogendji tatu ga longitha ngashi Omaimbilo, Elongo lyuukriste, Uutekisa, iifo yOmukwetu nomambo omakwa-wo goosikola, oga hogololwa kuye.

Omolwilonga ye mbika, omuwilikingeleka, tate Kleopas Dumeni, okwe tu tsu omukumo pombila yanakusa, kutya nando nguka ota mwena ngashingeyi mombila, eyakulo lye nantango oli li mokati ketu tali tsikile.

Auene okwa li omugundjuka gwomimvo 35 adhike, ihe methimbo lye efupi oshigwana a-shihe nOngeleka, oya yakulwa kuye nomo a sile meyakulo ndyoka.

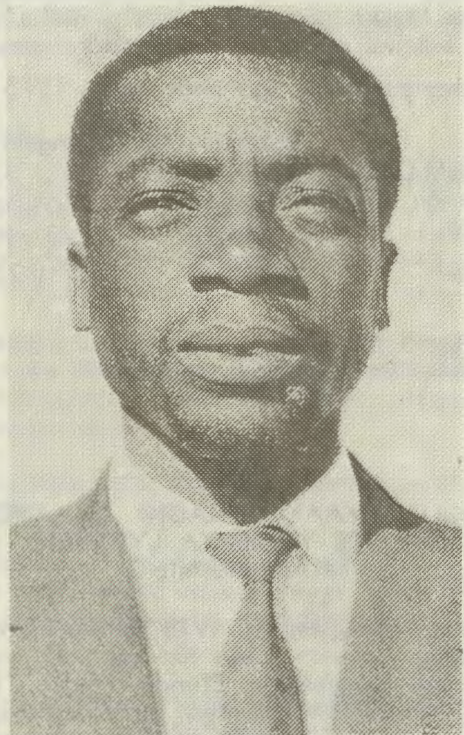
Tse mboka twa kala puye esiku kehe, okwe tu kumitha nomagano ge okukalathana naantu. Kapu na ngoka ha vulwa okukala puAuene. NaKalunga wo okwa fa a hokwa okukala pamwe naAuene sho e mu ithana puye mbala.



Omulandithimambo Aina Amakali ngoka a hupu moshiponga shoshihauto

Elaleko lye koshigwana, okwa adhika e li tumu nale nokuli petameko lyomumvo mOmukwetu No. 2/1976 sho a nyola a ti:

Aaleshi aasimanekwa yomambo niifo, Kalunga ne mu yambekele omumvo Omupe nuunene shono tamu shi toola miinyolwa yuukriste.



Nakusa Tomas Auene ya Auene

Okwa thigi po omukulukadhi gwe, meme Sara noyana yatatu, aamati yaali nokakadhona kamwe.

EPANDULO KAAPANGI MOTSHIKUKU

Kalunga okwa longele ndje oshikumithalonga sho nda kala ethimbo efupi moombete moshipangelo shaTshikuku shi vulithe shono nda li nda tengeneke okukala mo.

Otandi pandula aapangi noondohotola sho mwa yakula ndje nawa.

Otandi pandula wo ayehe mboka ya talele ndje po moombete naamboka ya galikanene ndje. Tangi unene, Kalunga na hambelwe. Ngashingeyi onda shuna kegumbo, ndi li nawa tandi tsikile iilonga yandje nombili.

*Aino Shituula
Okahao*

OWA KWATHA NGIINI EPYATUMO LYOYE 1975 MU ELOK

Oshiwana okutala nkene Omahanganotumo mu Elok taga longo momapyatumo gawo. Omahangano ngaka ogo:

- a) Ehanganotumo lyAanangeshefa (Eangelok)
- b) Ehanganotumo lyAapangi na
- c) Ehanganotumo lyAasita

Aanangeshefa oyo ya longo motsi ya tsuma sho ya kangele yakwawo ayehe. Aapangi nayo wo oya landula mo, nokonyala oya longo nuupenda kakele owala sho ya li ya longo nonyalo omumvo 1974, ya li nongunga onene. Nando ongaaka oshi shi okupandulwa, oshoka epyatumo lyawo enene.

Ngiika numvo otaye ke shi fulula ko. Ai, kwa li tuu kwa kamba kashona. Otu na etegame-no ewanawa kutya numvo ongunga otayi ana po.

Ehanganotumo lyAasita, olya thigilwa ontsi noitali vulu we okumona ombinga ndjoka inaa yi limwa. Ngiika olya tega ontsi yi koke lyo li hedhe nawa komutse. Ehanganotumo lyaalongi? Inali kalelwa po nani? Aakulukadhi yaasita? yaasita?

Omahanganotumo oga ende ngeyi: 1975

	Oshihupe 74	Egongelo 75	Ondjambi 75	Ongunga 1975	Oshihupe 75
EANGELOK:	+170.43	317.71	420.00		63.34
Aapangi	-465.99	1105.02	840.00	-200.97	
Aasita	-1398.78	287.49	1.108.80	-2220.09	
Kumwe	-2035.20	1710.22	2.368.80	-2420.06	63.34

Ehangano lyAalongi olya li wo lya gongele
Aakulukadhi yAasita oya gongele wo

R 65.00
R 32.20

*Omudhigininiwe
Sakeus W. Hekandjo*

ETSIKILO LYAAKULUKADHI LYAAAYEVA- NGELISTE YOMEPYA LYETUMO MUUNINGININO

Okersesa mOngwediva, 1975; omwa li mu na aalongwa yatano:- Lissa Kakongo, Otjivana-tje, Loide Kayekwapo, Etunda, Hertta Tjikulya, Oshifo, Linda Tjilumbu, Etoto nomuyakuli Leena lipinge, Onangalo, naanona yawo omugoyi.

Aalongwa mbaka oya dheulwa okulesha, okunyola, otundimbibeli pamahokololo gomOmbimbeli, Evangeli paLukas, Okatekisa, olwiimbo, okuyalula, uukalinawa, iilonga yiikaha, okuhondja, okuteleka, okukangula nesiloshimpuyu lyegumbo.

Oomeme mbaka oya kala mosikola oomwedhi ndatu. Oya li ya nyanyukilwa osikola ndjika noonkondo.

Tse, meme Ulla Pentikainen na meme Aino Dumeni, ongaalongi yawo, otatu pandula Kalunga notatu pandula mbaka mwa kwatha osikola ndjika. Yamwe oye tu pe iiyata yokuhondja, iikulya niikwatha yokolutu oyindji. Kalunga na yambeke onakuyakula mbaka.

Otatu pandula ooitaali sho mwa galikanene osikola yetu. Aalongwa oya mona shili elago lyokomwenyo nolyokolutu, osho wo tse aayakuli otwa mona elago neyambeko olindji o-molwomagalikaneno gaakriste ya ELOK alihe.

Otwa pandula nonkumwe onene notu uvite otu na ongunga yokuhambelela Kalunga sho e tu pele ethimbo ele okukala poompadhi dhe nokukonakona oohapu dhe, oshoka oshileshwa shetu, Okambo komahepeko gaKristus.

Esiku osikola ndjika ya hula, aalongwa mbaka oya lalekwa kOngeleka ya ELOK ayihe. Otwa hulitha esiku 12/10/75, esiku lyehulitho lyoshigongi shomalwiimbo mu ELOK alihe. Aalongwa oya lalekwa nuuyamba, noya tumwa wo ya ka uvithe eso neyumuko lyaKristus Jesus miigwana yawo. Oya pewa wo ooranda omilongo ne nane (R44.00). Aakwa-shigongi yu umbu ongalo nosumina taa ti:

"Otwa pewa oshipango tu uvithe evangeli. Faleni ko evangeli, faleni ko okooha nooha dhuuyuni, faleni ko".

Egongalo lyomOngwediva nOngeleka yetu ayihe oya tumu aatumwa yawo mepya lye-tumo mUuninginino.

Opu na omadhiladhilo ando osikola yaa huli-le mpoka. Otatu tegelele tu tale Kalunga ngele ote ke tu egululila ishewe ompito.

Omuwa na yambeke aakriste yongeleka yetu ayihe, nookuume ketumo ayehe.

Aino Dumeni

Oshitai shongudu yaNasionale muSuidwes-Afrika, ongudu ei i li koshipundi mu S.Afrika, meshikulafano loshoongalele shayo sheti 24 mu Aguste 1976. omu na oikundafanwa imwe ei:

* Epangelo li indilwe li mweneke filu ongu-du ya SWAPO iha udike vali.

* Pu tungwe ekwatafano liwa novatilyaane vokokule needoolopa, ngashi ovanafaalama, opo eameno li fike diva kuvo.

* Ovakwaite veameno va indilwe opo ovala-ule mOushimba va ndjoine yo oita. Osho yo.

* Ava ve na omaliko moilongo ei ivali mu S.A. nomuSuidwes, ndele ova hala okukala alushe apa, otava indilwa va kale ovakwashi-wana shaS. Afrika.

Kristus omumangululi wa shili

Jesus oye omumangululi wefimbo keshe nemanguluko ola dalwa muye noye okwe tu mangulula opo tuha tulwe vali moupika woulunde nowopanhu yo.

Pefimbo eli pamwe olo yo efimbo Omwene ta tala eitavelo loshiwana apa li fike nande oye mwene ta endifa momaudjuu. Mokutwala onghuwo yetu kOmunaenghono ou wokombada inatu dimbwa okwi ilikanena vakwetu va idililwa molwokuhumbata oudjuu woshiwana komitima davo nomolwoshili. Omwene ne va pe omukumo momaindilo avo. Ehepeko lavo, ehepeko letu yo.

Oshili oyoyo kutya ihai findwa nande hai dengifa ovanhu ile shi twale yo fiyo omefyo. Kape na ondjila ihena oudjuu. Hashili ya dipaifa Omona waKalunga mokuxupifa eemwenyo detu?

Jesus okwe uya okuhanganifa paha kale Omujuda ile Omugreka, omufininikwa ile omufininiki. Efiku onali ke uya eshi hatu ka imba yo ekandanga.

Tu ilikaneni kOmwene wetu ou a finda nale onyuni ye e tu findile yo mekondjo eli letu omolwefilonghenda latate Kalunga.

E. Amwaalwa

OONKWATWA DHA S.W.A. OTADHI GALUKA

Opwa tokolwa ngashingeyi oonkwatwa ndhoka dha edhililwa mu S. Africa (kokantuntu Roben Eiland) molwetaaguluko lyoveta yuwananwa woshilongo (oveta ndjoka ya li ya tseyika nedhina "oveta yuukomunisi") dhi tembudhilwe kuSuidwes nkoka dha kwatelwa.

Pahapu dhakomufala, gwoonkwatwa, ndjaji W. M. du Preez, oonkwatwa otadhi ka tembudhilwa ku S.W.A. uuna kwa ningwa omaloungekidho.

Omalongekidho oga kwatelela mo eningo nawa lyolugumbo ndoka lwa kunduka ondhologo osho wo edhiko lyomililo lya gwana.

Oonkwatwa ndhika tadhilwa tembudhwa omu na omusamene Herman Toivo ja Toivo.

(Suidwester 3.8.76)

Omutumwa waZambia kOiwana ya hangana, oministeli yoikwapondje, Siteke Mwale, okwa sheka omutumba wefinamhango mOvenduka, eshi a ti kutya wo omwifi tau twima okutuvikila oilonga "yopandeveli" yepangelo moshilongo.

Omushamane Mwale, ko VVO okwa ya ko a ka lye ko epangelo la S.A. eli Zambia ta ti kutya ola ponokela oshilongo shaye.

Moshiponokela eshi, otaku tiwa omwa fila ovanhu 24 navakwao 45 va yehamekwa. Omuyandjinghundana muZambia koradio ya BBC ku London, ota ti kutya oonakufya ava ova fila mokamba ya SWAPO.

Oilyo aishe yEwilikongudu leameno la VVO, oya pangula eponokelo eli, Amerika oye ake a anya okuyandja ondaka yaye moshinima eshi.

LUSAKA, ZAMBIA

Johnny ya Otto, oshilyo shaSwapo, osha uvika sha yamukula muLusaka, komutoto tagu inyenge muNamibia, kutya SWAPO okwa kanitha aakwiita ye 600 muule womasiku omashona ga zi ko.

Ehokololo ndika otali ti, aakwiita mbaka oya dhipagwa komatanga gegameno ga S. A. nenge kongundu yaakwiita, inaaya dhimbululwa kutya oyalye.

Shika ando osha ningilwa muumbugantu waAngola.

Ombelewa ya SWAPO muLusaka, oya ti yo inayi tseyi iinima mbika, shoka ye shi shi osho ekondjo lyawo ya mangulule evi.

OVAWILIKI VOMADUUMBO VA LONDWELWA

"Omunhu ta itavele natango a longifwe mukulikalekelwa, nashi kale opanghedi ilipipone shi shiive sha yela kutya, ke na fiku na ka kala e na emanguluko loshili, ndele ponhele yaashi, ota ka talwa alushe ongomweena wongaho, noufemba waye ota dulu oku u kufwa efimbo keshe."

Eshi osha tiwa mehokololo lokangudu koiilyo itatu yeembashitela (Kleurlinge) momutumba wekotamhango mOvenduka.

Omukalo wa S. A. wokuyandja natango elipangelo komaduumbo, fimbo ku na omutumba wefinamhango we lipyakidila nonakwiwa yoshilongo, otau ngongotwa unene koiilyo ei. Eshi ove shi luka "elidopo" la S. A. moinima yoshilongo eshi.

Ovawiliki vomaduumbo ova indilwa kokangu-du aka, opo vaha konge ombili ya Suidwes panghedi yomaduumbo.

(Advertiser 28.7.1976)

OMULONGI TA PUMBIWA

Mokulundululila Etestamenti Ekulu melaka lyOshindonga omu na ompumbwe yomulongi omuvalelwa mo, Omundonga.

Onawa omulongi nguka a pita o Juniolo nenge a tsey a omalaka Oshiingilisa nOshiyafrikaansa noku na ontseyo yoompango dhOshindonga, noku na ehalo lyokwii-tula mo moshilonga shelundululo tashi pula oomvula ntano ngele onshona.

Oshilonga shika tashi tameke okuza Januari 1977 notashi ka longwa melongelokumwe lyOmbimbelihangano ya S.Afrika na ELOK. Omunashilonga nguka ota tegelelwa a gwanithe shoka tashi pulwa kaanashilongangeleka mu ELOK pamauthompango.

Aalongi mboka ye na ehalo naa ninge eindilo kEpangelongeleka lya ELOK manga esiku lyotango lya Septemba 1976 inaali thika. Maalongi mboka ya ninga omaindilo, Epangelongeleka otali ka hiya mboka taye ya kokersesa yaalundululi tayi ka ningwa kOngwediva eti 23-28. ga Septemba 1976 (ano mefudho lya Septemba).

Mumboka ya kala mokersesa yaalundululi, otamu hogololwa omulongi gumwe a ninge omulundululi.

Omapulo ngele opu na, pula ku Amushanga gwEpangelongeleka, omusita Petrus Shipena, Oniipa.

Epangelongeleka lya ELOK.



Omuwilikingeleka gwa ELK, dr Lukas de Vries. Omusitagongalo de Vries oku li wo omupresidende gwoongeleka dha hangana muNamibia (VELKSWA). Etumwalaka ndika (tali monika pevi) okwe li tumina oongeleka adhihe dha VELKSWA.

OHATU ENDE TWA YUKA PENI MEFIMBO ELI

Oifo pefimbo eli oiyadi omahepu oukolokoshi noomafininiko. Eenghundafana pokati keengudu neengudu oda fa itadi kwafa unene sha. Oiningwanima younyuni otai holola kutya oonyuni aushe owa fa wa wila monghalo yokuhee na mbili nomoita.

Mepiyaano li fike apa loiwana, omo mu na Ongeleka yaKristus. Oshilonga shOngeleka okuhanganifa ovanhu, haalushe shipu vali monghalo ei oku shi wana.

Omolwaashi Ongeleka otai pendulwa efimbo nefimbo i pashukile oshilonga shevangeli. Evangeli olo alike eyukifongodi tali kalelele, notali tu ningi ovatungimbili mounyuni ou wa kanifa ombili. Eudifo lOngeleka mefimbo eli olo ngaha:

“Alukileni kuKristus, Alukileni komushiyakano waye.”

dr. L. de Vries



OMUKWETU

Oye oshifo shOngeleka onkwaevangeli paLuther yomOwambokavango. Ohashi nyanyangidhwa mOniipa. Omukuluntu gwoshifo omumbisofi dr. Leonard Auala. Amushanga Rev. Sebulon Ekandjo.

Ondando yoshifo komumvo muSuidwes nomuAfrika alihe R 2.00, kombanda yomafuta R 4.00.

Oondando nomambesitelo naga tumwe kOmukwetu Oniipa: P/B. 2013, Ondangwa.

Omatseyitho agehe gomuntu mwene ohaga futilwa kumwene.

OWAMBOKAVANGO CHURCH PRESS
PRIVATE BAG 2013. ONDANGWA 9270