

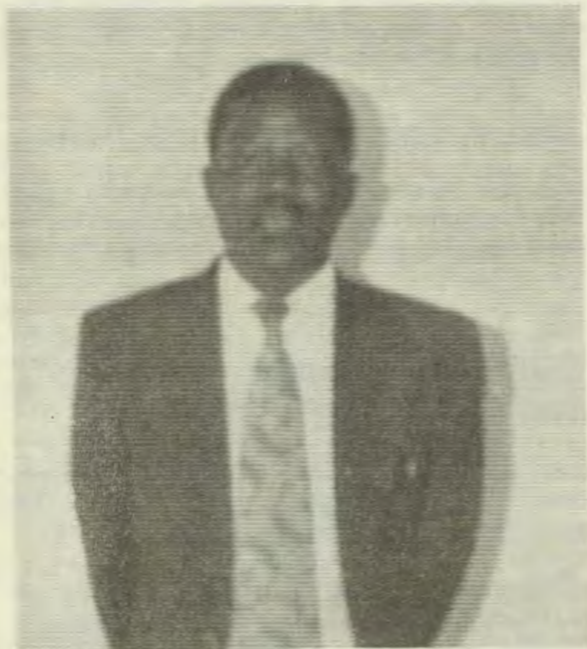
OMUKWETU

Registered at the General Post Office as a Newspaper

10c

ELOK OKWA HOLOLA OMWENYO NOMOMAHEPEKO

Ongeleka ya Elok ndjoka yi li oshilyo mezi-
mo enene lyAakwaluther muuyuni auhe, oya
koko niilyo 19,356 muule womimvo 3 dha
zi ko.



**Omutonatelishitayingeleka shuuninginino, o-
mupe, Mika Ilonga.**

Mbaka oya za momwaalu gwaapagani yi i-
tedhulula nenge aanona aakriste mboka ya
shashwa. Osho omupehawilikingeleka Kleo-
pas Dumeni a holola mehokololo lye.

Oshigongingeleka oshitimugoyi sha Elok sho-
no sha gongala pokati kaJuni naJuli nuumvo
mEngela, osha etelwa puuyeleele onkalo ayihe
yOngeleka pethimbo ndika nenyolwahokololo
lyomupehawilikingeleka, Dumeni.

Omagongalo naayakulingeleka

Ongeleka oyi na ngashingeyi aasitagongalo
118, aayevangeliste 131 naadiakoni 59. Aa-
longi naapangi itaa pu ku yalulwa.

Aasitagongalo 12, oye li moshipundi shevu-
luluko pamwe naayevangeliste 20. Aasita 5
oye li miilonga yoosikola nenge yepangelo
na 91 oyo taa yakula omagongalo, osho e-
hokololo lya ti.

Omagongalo 49 okuza omumvo 1973, oga
gwedhelwa omakwawo omape 4 nosha eta e-

pulo enene kOngeleka nkene taku monika o-
mukalo gwokuyakulitha aakriste nevangeli
mboka ye li kokule nOngeleka.

Epulo lyokuvangelitha aana yaKalunga pethi-
mbo ndika, olya holoka wo mehokololo ndika
mekwatathano niipangelo, niilyongeleka mU-
shimba nomoosikola dhopevi nodhopomba-
nda.

Ihe shono sha longwa po komuyevangeliste
gwOngeleka Efraim Angula muule womimvo
13 kewiliko lyOmbepo yaKalunga nokomu-
kwathi gwe Natanael Shinana, osha tumbu-
lwa mehokololo ndika nepandulo enene.

Ehokololo otali zimine wo ekoko miilongaya-
kulo yilwe mOngeleka ngashi, oshilonga mo-

Tala kep. 2



**Omusitagongalo Jason Amakutuwa, ngoka
a li nale omutonatelishitayingeleka shuuni-
nginino, ngashingeyi epangelongeleka oye
mu hogolola a kale omuyakuli gwaawiliki-
ngeleka ya ELOK. Oshilonga shetonatelo o-
kwe shi thigile "lilonga yaAgundjuka."**

kati kaakiintu, mokati kaalumentu nomokati kaagundjuka. Osha za kuupenda nokeitu-lomo lyaawiliki yawo.

Pamauthompango Epangelongeleka otali toto uungunduwiliki okusila oshimpwiyu iilonga yi ili noyi ili mOngeleka, opo eyakulo lyomuntu kehe mOngeleka li tsakanithwe. Omawilikongundu ngaka kumwe nuungundulongekidho uukwawo, oge li ko 38.

Mongundu ndjika omwa kwatelelwa wo nE-wilikongundu lyoshilonga shomusika, shoka omupehawilikongeleka a ti kutya osho shi-mwe shi na esimano enene mokutaandelitha evangeli mOngeleka ndjika.

*Omwenyo gwOngeleka nokuhomonwa
kwayo*

Omwenyo gwOngeleka ehokololo ndika olyegu tumbula mekwatathano noshilonga shetu-



Absalom Hasheela, omusitagongalo omugundjuka mEndola, omupeha mepangelongeleka gwomusitagongalo Jason Haufiku, okwa li wo omulongi gwaasita kOtjimbingwe.

mo shoka tashi longwa kaapangi, kaanangeshefa, kaalongi, kaanasikola, kaasita nokakulukadhi yawo.

Otagu dhimbululwa wo mokugalikanena ethimbo edhigu, naatondi naahepeki yawo ya hupithwe.

Omwenyo otagu monika wo mohokwe yokukala poohapu dhaKalunga mokukonga omasakramendi Omayapuki nomelongelokumwe lyooitaali momagongalo nomiituthi yOngeleka.

Hasho shika ashike. Pahokololo ndika Ongeleka oya adha wo oshikako shomahepeko ngoka inaaga makelwa shito kuyo. Shika otashi leshwa miiningwanima tayi landula:

(a) Oshinyanyangidho nOsitola yomambo sho ya fikwa po komukolokoshi.

(b) Aagundjuka oyendji sho ya taaguluka ongamba, tashi ulike opu na sha mpa-ka inaashi yela.

(c) Eso lyomukwaniilwa Filemon Elifas sho a dhipagwa.

(d) Egumbo lyegongalo lyaNgwediva sho lya umbwa noboma moka mwa li aantu 34.

(e) Aasita naayevangeliste naalongi pamwe niilyo oyindji yoshigwana sho ya tulwa mondholongo.

Ongeleka pomathimbo nomathimbo mokuhomonwa kwa tya ngeyi, otayi yelutha ewi lya-yo okupukulula, okuhanganitha, okupopila ombili noku uvitha evangeli, aahepeki naahepekwa ayehe ya hupithwe. Osho enyolwahokololo ndika lya ti.

EPANGELONGELEKA EPE LYA ELOK

lilyo iipe yomEpangelongeleka naapeha yawo oya hogololwa nenge ya hogolululwa koshigongingeleka shono sha li mEngela omasiku ga zi ko.

lilyo yomoshigongi shika, sigo onena ohayi hogololwa paitayingeleka, omoluupe uupu wokudhimbulula oompumbwe koombinga adhihe dhOngeleka.

Oshilyo shomoshitayingeleka shUukwanyama, omusitagongalo Jason Haufiku nomupeha gwe omusitagongalo Absalomo Hasheela.

KOkavango omusitagongalo Asser Lihongo nomupeha gwe Markus Ihemba. Omusamane Lihongo oye wo omutonatelishitayingeleka shoka nokwa hogololululwa.

Moshitayingeleka shOndonga, omusitagongalo Festus Ashipala ngoka a hogololululwa nomupeha gwe Salomo Elago naye wo a hogololululwa.

Muuningininino omusitagongalo Josafat Shanhala, omusita ngoka omugundjuka e vulike kwaayehe ya hogololelwa moshilonga shika okuza uuna aavalelwa mo ya tameke okulonga mongundu ndjoka.

Omupeha gwe omusitagongalo Johannes Shifiona.

Pamauthompango gOngeleka mongundu ndjika omu na okukala wo omukuluntutumwa gwEhanganotumo lyaSoomi pashilonga she; noshilyo shimwe shomaatumwa tashi hogololwa koshigongingeleka.

Pahogololo ndika omutumwa Matti Seppala okwa hogololwa koshigongi nomupeha gwe Raimo Holopainen.

Oshilonga shEpangelongeleka osho okulela Ongeleka pethimbo ndyoka Oshigongingeleka sha halakana, sigo oshigongi tashi gongala ishewe.

A SIMANEKELWA OMAHEPEKO

Joh.13:31,32.

Omusitagongalo Asser Li-hongo, omutonatelishitayingeleka shaKavango, okwa hogololulwa a kale natango oshilyo shepangelo-geleka.



Senegal natango otashi kuwilwa onghuwo yevangeli

Natango onghuwo ipe oya udika ya dja moshilongo sha manguluka, Senegal muAfrika, tai lili oluhepo lwomufitaongalo.

Onghuwo ei onhivali tai udika mu ELOK ya dja koshilongo osho. Paife opwa pita ashike eehani hamano eshi ELOK a tuma kwinya omufitaongalo Paulus Heita, pamwe neumbo laye, omuhakuli Fiina nokashiveli kavo Rakkel.

Oshoongaleleengeleka sha ELOK neudo mEngela, natango osha etelwa onghundana tai hokolola oluhepo lomufita moshikokola shinya muSenegal. Epulo ngenge ovayakuli vakwao



Omusitagongalo Johannes Shifiona, Onaanda, ngoka a hogololwa numvo koshigongingeleka a kale omupeha gwomusitagongalo Josafat Shangala, Nakayale. mepangelongeka.

yo otava pumbiwa ko tuu, ola nyamukulwa yo nondaka yopombada kutya: Heeno.

Paudafano la kolekwa neshaino pehulilo lomudo wa dja ko pokati kEhaganotumo laSoomi nOngeleka ya Elok, efiloshisho alishe loshikokola osho, oli li momake eengudu edi mbali.

Ehaganotumo laSoomi ola tumine ovatumwa valo kuSenegal 1974. Eshi Etumo laSoomi la holola ompumbwe yovanashilonga kwinya, Ongeleka ya ELOK inai likwata, nde oya tuma ko diva ovatumwa vayo pehovelo lodula ei.

Shiimba havo tava ka kala votete novaxuuninwa.

Judas sho a yi pondje, Jesus okwa ti: Nga-shingeyi eyadhimo lyOmuna gwOmuntu olya hololwa, eyadhimo lyaKalunga olya hololwa muye.

Judas sho a pilamene ko, ye Jesus ota taalele kaalongwa ye noku ya popitha noohapu dhetalaleko. Oshoka oku shi shi kutya ethimbo lye lyokutopoka nayo olya thikana. Aalongwa oya pumbwa oonkondo nehekeleko, oshoka otaya ka tsakaneka uudhigu.

Judas okwa piti mo a ka longekidhe elandithopo lyaJesus. Ngashingeyi oshitenga shoka Jesus e na okunwa oshoshili. Kape na we omalimbililo gasha. Onkatu yotango yeyadhimitho oya tsakanithwa.

Olwindji pomaso gaantu opo hapu monika kutya omuntu okwa li a tya ngiini. Aantu opo taya dhimbulukwa uuwanawa mboka nakusa e u longwa. Oyendji otaya tumbula nokuli kutya: "Nguka okwa li omulumentu ina kala ko nando onale".

Omuna gwomuntu okwa adhimithwa kiikumitha ayihe ya longwa mokukalamwenyo kwe. Ngashingeyi ota ka adhimithwa moshikumithalonga shi vule iikwawo ayihe ya tetekele, shoka tashi mu fala meso sigo omombila nokuli. Konima ota yi nduno menyanyu lyahugunina ndyoka Etestamendi Epe tali li toloka nokutya eyo lyaKristus etiyali.

Olwindji aantu ohatu limbililwa konkalomwenyo yaamboka yi itaala Jesus gwashili. Muyo ito mono mo nando uukwatya tau tundulukitha omwenyo gwomuntu. Omuyapostoli Paulus ote shi fatulula ta ti: Mbyoka iigoya, Kalunga okwe yi hogolola.

Kaakriste omahepeko kehe tage ya ningilwa ogo ondjila yokuya kesindano, okukathika megwaneneno. Oshili kutya omuntu ita mono eyadhimo li vule ndyoka okuhepekelwa Kristus.

"Ngele ku na ngoka, a hala okulandula ndje, oye ni idhimbwe ye mwene, ni itsike omushigakano gwe ye na landule ndje, Mat. 16:24.

Jesus ota adhimitha He sho a vulika kuye. Pantu otatu vulu okutya Jesus okwa li e na ompito okufadhuka po omushigakano, ihe okwa pitika ehalo lyaHe li gwanithwe.

Omunona oha eta esimano kaakuluntu ye uuna ta vulika. Oshi li wo esimano komulongi uuna ndoka omulongwa ta dhiginine shoka a longwa. Mevuliko lyaJesus Kalunga okwa adhimithwa.

Momushigakano Jesus ota mono eyadhimo lye mwene, ihe ethimbo otali ke ya uuna eyadhimo ndika tali ka ulukilwa uuyuni auhe.

A. W. Amutenja

DR. T. IHUHWWA NOMUKWETU

Omukwetu sho uvu dr. Hannu Kyrönseppä ngoka a kwatha oshigwana nuudhiginini, kutya okwa shuna kOsoomi pamwe negumbo lye, na sho dr. Veli-Pekka Jääskiläinen ngoka a ningi ngashingeyi omukulunhu gwoshipangelo shaNandjokwe okwa yi mefudho.

Omukwetu okwa pula omundohotola T.C.K. Ihuhwa (30) omuvalelwa mo ngoka e li ngashingeyi omupehakuluntu gwoshipangelo kutya onkalo oyi li ngiini moshipangelo.

Omukwetu: Ano eyooloko pokati komukuluntu gwoshipangelo (Supirintedent) naMatrone olini?

Dr. Ihuhwa: Supirintedente ye mwene aluhe ondohotola ngoka e na sha netonatele lyoshipangelo ashike. Oye omuyamukuli gwomapulo agehe ge na sha noshipangelo. Manga Matrone e na sha owala nesiloshimpwi-yyu laapangi.

Omukwetu: Moshigwana shetu omu na aantu mboka taya popile epango lyopashigwana. Ngoye ndohotola oto ti ngiini koshinima shika?

Dr. Ihuhwa: Epango ndika ngame otandi li ekelehi. Shila otandi indile owala aantu ya holoke kuyele koshipangelo ngele otaya ehama opo ya pangwe mbala manga uvu inaa tana.

Omukwetu: Ondi wete aantu moshigwana shetu ohaa yi owala kiipangelo ngele oye wete ye na uuwehame molutu. Te ti, otashi vulika ngaa ndi ye koshipangelo ndi na uudhigu washwa, nando ndi tye uudhigu womegumbo?

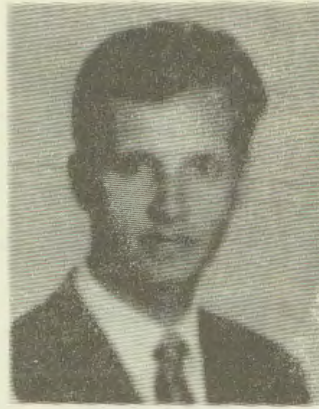
Dr. Ihuhwa: Eeno, otatu ku tegelele nenyanyanyu.

Omukwetu: Esiku limwe sho nda lala moshipangelo sheni onda li nda uvithwa nayi kiikulya iwinayi osho wo omalapi ngoka ga lalwa kaavu inaga kangulwa. Ndohotola owo ngaa uuyogoki mbono hamu popi?

Dr. Ihuhwa: Oshipangelo shetu oshongeleka. Tse katu na iimaliwa ya gwana. Otatu kambadhala okuninga shoka tatu vulu. Ngashingeyi otu na nokuli aavu oyendji shi vule onkondo dhoshipangelo. Otwa pumbwa oombete osho wo oondjugo moka tatu lanengeke aavu.

Omukwetu: Ohandi uvu olwindji taku ithanwa aakadhona opo ye ye okwiilonga uupangi. Olwindji ohaku popiwa kutya naya kale ye na onkatu yomatilika. Ngoye ndohotola oto ti ngiini koshinima shika?

Dr. Ihuhwa: Eeno otandi tsu aakadhona yetu omukumo yi ilonge sigo ya adha nokuli onkatu yomatilika ngele tashi vulika. Oshinima sha simana kashi shi omatilika; omuntu nande oku na owala ostanda ontihetatu ndele oku na ohokwe niilonga, nena oku vule ngoka mwa ti oku na omatilika.



Omundohotola Veli-Pekka Jääskeläinen ngoka e li po ngashingeyi omukuluntu gwoshipangelo shaNandjokwe. Omukulukadhi gwe oku li wo omundohotola gwomayego.

OMBANDA

Uulema wokugulu nenge wokwaako nokugulu kombinga yimwe otawu etwa olwindji komukithi gumwe ngoka hagu holoka unene mokati kaakuluntu, etiko lyombinzi muuluyi (nenge iiponga yilwe yoonkandja dhombinzi).

(Mpaka itandi popi nando uvu wokulemaneka uunona, Polio).

Ngele muuluyi omu na etiko lyombinzi, otashi vulika omuntu ta lemama okwaako nokugulu. Ishewe otashi vulika omuntu ta kwatwa ngeyi no ita vulu okupopya we, nenge ta kanitha ontseyo ye thilu.

Ope na omatompelo ogendji ngoka tagakoleke etiko lyombinzi muuluyi, ihe unene ngaka gatatu.

1. Oolumwe moonkandja dhombinzi muuluyi omu na omahala gamwe ngoka inaaga kola nawa panshitwe. Onkandja ya tya ngaaka otayi vulu okutopa nombinzi otayi tameke okuya muuluyi wowene. Shika otashi vulu okuholoka momuntu nando omugundjuka.

2. Omuntu oku na omukithi gwombinzi moka ethindakano lyombinzi lya londa (hoë bloeddruk). Ngele omuntu a kala ethimbo e na omukithi nguka, otashi vulika onkandja yimwe tayi ka tuuka, ngaashi unene meni lyomutse nombinzi tayi tikile muuluyi nuulema tau landula.

3. Oonkandja dhombinzi odha nkundipala omolwuukulupe notadhi vulu okweeta etiko muuluyi.

Ngele ombinzi oya tikile muuluyi, nomuntu a lemama, opu na uudhigu oku mu kwatha nawa. Omolwaashoka otu na okukambadhala okupanga omuntu manga oshiponga shetiko inaashi mu adha.

Unene otwa hala okupanga mboka ye na omukithi ngoka gwethindakano lyombinzi lya londa. Omumvu a tya ngaaka ota pangwa nando ke na uuwehame washwa nomuti ethimbo ele, olwindji okukalamwenyo kwe akuhe, ayande oshiponga shoka shetiko lyombinzi. Omuvu nguka okuna okudhiginina omiiti dhe esiku kehe pautho lyomundohotola nando ku uvite ta ehama, opo a yande oshiponga shombanda.

dr. H. Kyrönseppä

DUMENI NATANGO OTA KWAFWA
OMUBISHOPI

Oshoongaleleleka sha Elok neudo inashi tambula eindilo lomubishopi okupewa oshipundi shetulumuko, sho inashi mona omhumbwe yokuhoollola omubishopi omutivali mOngeleka, ndelene osha nangeka ashike natango omufitaongalo Kleopas Dumeni a kale omukwafi waye.

Omutumba omuti 9 welelo lOngeleka ei, owa kala oule womafiku 10 mEngela pokati kaJuni naJuli. Kakele koikundafanwa ikwao inene ya li moshongalelele omu, Efinamhango noma utomhango olo la li oshikundafanwa sha fimana.

Omalunduluko okukufamo sha ile okuwedela mo sha momaufomhango aa a longifwa konyala eedula 20, okwa ningwa. Eshi osha ningwa nokutala yo efimbo omo Ongeleka i li mo, ngashi elongelokumwe layo, neengeleka dikwao meni nopondje.

Oshoongalelele osha hoololulula tate Dumeni nomawi 173 a twikile okukwafa omubishopi mewiliko. Mehoololo eli omwa li omadina 17, muo edina la shikula tate Dumeni, Omufitaongalo Kristof Shuuya, e na omawi 8. E-hoololo ola ningwa noumbapila.

Omubishopi dr. Leonard Auala ou a hangika a lekela oshoongalelele tashi lele Ongeleka ei, kutya efimbo laye okupewa etulumuko pamaufomhango, oli li pokuxula po, okwa indilwa a twikile natango nokukwatela Ongeleka komesho, ngashi oukolelele waye tau shi pitika. Pamaufomhango etulumuko laye oku na okulipewa konima yomido mbali tadi ke uya.

Ovawilikingeleka vetu, ovo omaano, eeshali twe di pewa kuKalunga, okweenda pamwe nafye mefimbo eli. Onghe otu va kwete mokati ketu nepandulo linene.

Osho omukwashoongalelele umwe a tumbula ngaha nepandulo linene. Oshoongalelele osha li noilyo 212 ve na ewi momatokolo. Omwa li yo ovaenda ovakalelipo veengeleka dikwao moshilongo; yaKatolika kaRoma noyAnglikana. Ovatumwa vahapu yo ova monene omhito okukala moshoongaleleleleka.

Mokati kovaenda omwa li elenga ekulunhu mOukwanyama, omona wohamba Elia Ueyulu ou a kumaida oshoongalelele shi kale metilokalunga.

OMAHALELOYAMBEKO KOMUWILIKI-
NGELEKA

Ote halele omuwilikingeleka Kleopas Dumeni onkondo moshilonga she shoka e shi hogololelwa ishewe. Kalunga na yambeke ayihe to ke yi longa nopethimbo ndika ongeleka yi li muudhigu.

Aakriste amuhe yongeleka ya ELOK pamwe nomumbisofi naasita, ina mu tila nando aatondi. Kalunga ote mu kondjele.

Ongeleka yaKristus itayi ka sindwa nando komiyelo dhoheli.

Omukriste omukweni mekondjo,
Silas Chief Auala

OMUNYASHA ENDA ALUSHE MONDJILA
YOUYELELE

Okafimbo oke li po kanini natango, ouyelele wevangeli u li mokati ketu. Tu diinineni okweenda mondjila youyelele tuha pwipwiki-lwe po komilaulu nge tadi ke uya, Joh. 12:35-36.

Ovanyasha vakwetu, ofye ooshitimukupulwapa moshilongo shetu nomOngeleka yetu. Ohatu dulu okumona kokule tu minikile mo. Ovawetu ovo va wililwa po komilaulu va mone oshihopaelelewa shiwa mufye. Ve uye mongudu yetu, va hambelele pamwe nafye Tate ou e li meulu. Mat.5:16.

Ondjovo yomushiyakano oya nyikila oulai movanyasha ovo ve li po ovasheki novadini, ndele kufye ava twa minikilwa, oyo ouyelele mondjila yetu. 1Kor.1:18. Enda alushe mondjila youyelele. Livangeka alushe ovasheki Eps. 1:1-3. Omwene wetu Jesus oye Omufita wetu ta lifa ovo ve li mondjila youyelele. Eemwenyo detu ote di kutifa alushe neendjovo daye note tu yukifa alushe mondjila yaye omolwefilonghenda laye linene.

Satana paife okwa mangelulwa nota kondjifa opo a ninge aveshe oshihakanwa shaye meongalo. Vakwetu, hai ti:

Oko tuu mwe shaama hano oko nai? Otamu i tuu komesho mondjila youyelele?

Kaleni oupafi, efimbo ola fika nye mu konakone nawa eemhepo odo de lihanena paife momaongalo. Tu endeni alushe tu li metilokalunga, osheshi etilokalunga otali tu dimbulukifa alushe ehala laye liyapuki, olo twe li pewa li li oshipalanyolo shOmudo Mupe.

Ehala lOmwene tu li tuvikileni alushe meni meemwenyo detu. Ngenge hatu li diladila, keshe tu opo tu li, nakeshe tuu opo hatu ende, naashi hatu longo, nge ouwa ile oshowii, tu dimbulukwe alushe, Omwene Kalunga tate, oku tu wete.

Ngenge twa ya pondje yoipango yaye iyapuki, tu lyaalukeni shili nokutala, netilo liyapuki, osheshi oye Tate yetu shili, fye ovana vaye ovaholike. Tu ilikaneni fye tu tyeni:

Omwene, okwoove hatu lyaamene,
Twa mwena, twe limwenenena.
Ekwafo loye otwa teeelala,
Omwene, oove owa udaneka nale oto tu kwafa.
Tu mangelula Omwene tu dje mo.
Omwene, ila u tu kwafe.

Amen.

Abraham Haileka



Oshilongatumo mUuninginino osha enda na-wa momumvo 1975. Inapu kala omalunduluko omanene. Omahala omape ga totwa naatu-mwa ya langekwa. Kombinga yaRuacana oku na omaimbo gamwe ngaashi itaku pitikwa o-kutungwa. Ishewe aantu ya lombwelwa okuza ko kOntaululi.

Oshilonga sheputudho naatumwa

Moshilongatumo omu na omandhindhiliko o-mawanawa. Aanona otaa ya kosikola yeputu-dho ndjoka tayi lalakanene osikola yeshasho wo. Pomahala gi ili nogi ili, oye li po lwa-mpo 700-800.

Omapiya getumo moka mu na oosikola 21. Omahala omape ga totwa Amaupa, Otoongo, Omahenene naatumwa aape ya langekwa mUutsathima muAmarika, Onamatanga, Oshi-fo nEtunda.



Aatumwa yotango Aawambo kuSenegal Rev. Paulus Heita, omukulukadhi gwe nokasheeli kawo Kalonge.

Epangelo olya langeke aalongi kEtoto kOtti-vanatie. Otatu tegelele epangelo li taambe natango aanashilonga pomahala ngaka, Uu-vudhiya, Amarika, Uutsathima, Okatseidhi, Eengalashe, Etunda nOmindamba.

Nenyanyu tandi shi tumbula kutya mokati kaalongi omu na mboka ya yi omolwoshilo-ngatumo shoshitayingeleka. Mwaamboka mu na aayevangeliste yahetatu.

Moshilando Oshifo omu na ompumbwe yo-musita. Otatu ka pewa omusita konima yoo-mvula ndatu, oshoka Omuyevangeliste Frans Kankondi a taambwa mosikola yuusita kEngela.

Ookoshuis nuupangelo

KEtunda nokUutsathima okwa longwa oHo-stela nomudhiginini gwayo. Ompumbwe yi li po okutota ohostela palwe wo ngaashi kEtoto nokOnamatanga, hoka aanona taa menekele momagumbo pethimbo lyosikola.

Amarika nokUutsathima otaku longwa oka-pangelo mewiliko lyaayakulipangi mboka ya putudhwa mosikola yaayakulipangi mEngela. Aakriste naapagani oya simaneka unene o-

shilonga shuupangi. Aapangi taa pumbiwa momapiya getumo.

Omupangi Toini Hihnala okwa ende pamwe naakwathi ye momapiya getumo nokutuntila aanona.

Omatalelopo

Aatumwa yamwe pamwe naanona oya talele po omagongalo gamwe noku ga ningila iigo-nga yetumo ngaashi Onaanda, Othika, Elim, Ogongo, Elondo, Onangalo, Tshandi nOnesi. Aakwanegongalo yomagongalo gamwe oya mono ompito yokutalela po omapiya getumo Aayelim, Aaniimwandi, Aathika, Aakahao, Aanaanda, Aashakati, Aambalantu, Aatilyasa, nAagongo.

Omagongalo ga taamba oshimpwiyu shokuya-mbidhidha epya limwe lyetumo ogo Osha-kati, Oniimwandi, Othika, Elim, Onaanda nO-nakayale.

Oshiketha

Oshilonga shetumo osha pula iimaliwa yi vule yonale omolwaatumwa aape ya langekwa noondjambi dhawo dha gwedhelwa noo-pelesenda 40%. Oongalo nomagano ge eta lwaampoka R1500-00, ihe iimaliwa oyindji otwa li tu na okwiindila koshikethangeleka sha ELOK. Epangelo lya tameke okuyambidhi-dha ookoshuis kEtunda nUutsathima.

Oluhodhi

Otwa adhikile kelaka lyoluhodhi, sho twa tseyithilwa aatumwa yaali ya mana oondje-nda. Oyo omuyevangeliste Filippus Iyambo kOkatsiidhi nomupangi tatekulu Petrus Ileka kOnamatanga.

Matti Seppälä



Omusitagongalo Toivo Pentikainen, okwa ka fudha po manga negumbo lye kOsoomi. Okuya kwe mOwambo (1960) okwa kala omu-longi mEngela, omupehatonatelishitayingeleka shUukwanyama, opo ihe a ningwa omu-yakuli gwaawilikingeleka ya ELOK (1966), oshilonga shoka sha pewa tate Jason Amaku-tuwa. Nuumvo okwa kala ta yakula wo ngo-mupehakuluntutumwa.

HAMBYUKA INA HALA OKULONGELA AAWA YAALI

Pomasiku ga piti opwa tseyithwa mOradio Kavango omadhina gaantu yamwe, mboka taa ka kala Ewilikongundu lyEkuliko Kavango Corporation. Momadhina ngono omwa li mwa holokele wo lyomusita Johannes Hambyuka, omuKavango.

Pakupopya kwomusita Hambyuka mwene okwa ti, ye ina pulwa nando esiku limwe, ngele okwa hala okukala oshilyo shongundu ndjoka na ina tseyi wo mpoka pwa ningilwa oshigongi shontumba shoka she mu hokolola.

Pamwe nomadhina galwe okwa tuminwa ombapila ndjoka ya thikithwa kuye komukwanepangelo gumwe tayi mu pe uuyebele nokutya otaka kala ha mono oshipahu R1500 komumvo omoluukwashilyo we mongundu ndjoka, Ekuliko Kavango Corporation Ltd.

Sho a pula nkene she ende opo edhina lye li kale mongundu ndjino opwa li pwa dhingolokwa sigo a tseyithilwa kutya edhina lye no-gooyakwawo yalwe oga ziilile owala kuPretoria ku M. C. Botha, oministeli yEhumokomeho nEputudho lyAaluudhe.

Okwa pula opo oonakutseyitha noonakwiigidha edhina lye mOradio ya opaleke oshinima shoka, oshoka okwe ya lombwele meukililo, kutya ye ita vulu okulongela aawa yaali.

"Ngame ondi ithanenwa okwiigidhila aantu yaKalunga noshigwana she ehupitho lyomwenyo gwaaluhe," osho omusita Hambyuka a fatulula mwene.

Konima oradio oya opaleke nokutumbula kutya okwa tindi, oshoka ita vulu okukala niilonga yopaali.

HOGOLONENI NE YENE - BOTHA

Elombwelo ndika olya lombwelwa oosikola dhimwe dha S. Afrika opo dhi hogolole elaka ndyoka dha hala okulongitha, komusamane M. C. Botha, oministeli yelongo lyaaludhe.

Omulandupangelo nguka omupe ogwa zi mpoka sho pwa li pwa ningwa iipotha ya dhipagitha aaluudhe molukanda lwaSoweto, muJohannesburg nomuReef; osho wo molwoonkundathana ndhoka dha li dha ningwa pokati kaakwanepangelo yeledo lyaaludhe naaleli yaSoweto.

Miipotha mbika omwa li mwa sile aantu oyendji noyendji ye ehamekwa, omaliko nomatungo ogendji oga li ga yonwa po.

Palombwelo ndika epangelo olya ekelehi oveta ndjoka tayi dhengele opo aanona aaluudhe yi ilonge elaka lyepangelo okuza positanda 5 sigo opombanda.

Pautho ndika Oshiingilisa nashi longithwe unene ngelaka lyopokati kAasoweto, kAanatal nokAakapa Peninsula. Mboka ya pewa uuthemba mbuka noye na ehalo okulongitha Oshiingilisa moosikola dhawo, oye na okweenda ngeyi:

Omukuluntusikola kehe na mone ezimino lyetonatelonongelo, omanga ina ninga eendilo kuamushanga gwelongo lyaaludhe, J. Rousseau.

Pantumwafu ndjoka ya zi koministeli ya nyolelwa aawiliki yaSoweto, omwa nyolwa iinima itatu mbyoka oosikola dhi na oku yi hogolola, tayi leshwa ngeyi:

■ Longitheni Oshiingilisa ongeleka lyeni ne mu tale kashona kOshimbulu ongoshilongwa.

■ Longitheni Oshimbulu ongoshitsa shopokati (ne mu tale kashona kOshiingilisa; na ishewe).

■ Longitheni Oshiingilisa nOshimbulu shi thike pamwe miilongwa yi ili noyi ili. Eutho ndika inali kwatelela mo manga S.W.A.

Omundohotola Manas Buthelezi, omunashipundi gwEhangano lyaavali okwa ti:

"Omupya, sho eutho ndika lye ya kohima, aantu oyendji sho ya kanitha nale oomwenyo dhawo."

Sigo oompaka inaku tseyika kutya otashi ka mbilipaleka tuu aaluudhe.

(The Star 6.7.76).

OMINISTELI YA FUTITHWA

Omwaalu gu vule R4 000 kwa gwedhwa omwaalu omukwawo gwokufutila ompangu, ogwa futwa omasiku ngaka iilyo 18 ya N.N.C. (Namibian National Convention) koministeli yaapolosi, J.T.Kruger, molwekwato ndyoka lya li lya ningilwa iilyo yehangano ndika, aniwa molwombili yoshilongo.

N.N.C. okwa li a eta oshinima shika mompangulilo sho iilyo ye 18 ya li ya kwatwa omumvo gwa zi ko sho ya li ya gandja omadhiladhilo gawo montaneho moshilandopangelo shaVenduka.

Oya li ya tindilwa epitikilo opo yaa ende puundingo washilando noku ulika omadhiladhilo gawo gokwaapopila okukala kwa S.Africa muSouth West Africa. Oya kwatelwa popepi nopoosa mpoka ya li taya hololele omadhiladhilo gawo.

Pahokololo ndyoka lya gandjwa kuhahende gwa N. N. C. olya ti kutya otjeke yi vule R4 000 oya gandjelwa pondje yohofa noya pewa iilyo ya N. N. C.

Shika oshitiyali okuningilwa ehanganano ndika sho lya li lya pula opo li holole omadhiladhilo galyo, ihe olye shi tindilwa.

(Suidwes Afrikaner 9.7.76).



**MBOKA YA TEMBUDHILWA
KEGUMBO LYOMEGULU**

Anna Rancken, (76) okwa mana 'oondjenda dhe eti 14.6.1976 Oye a longo mOnandjokwe wo, ihe ethimbo ele omiiipangelo yokUuninginino, ngaashi mUukwaluudhi, mOnandjera nomUukwambi. Ethimbo limwe okwa li omukuluntu gwsikola yaapangi mOnandjokwe.

Meme Anna Rancken okwa li a tekula oothigwa, uuhanona mboka wa silwa ooyina manga uutalala. Okwa shunine kOsoomi momumvo 1950.

Katri Saarisalo, (76) naye wo okwi ithanwa ombadhilila kegumbo lyuuyelele eti 22.6.1976.

Oye okwa longo iikando iyali mOwambo. TANGO okwa longo mOnandjokwe, nokonima yefudho lye muSoomi, oshikando oshitiyali okwa longo kEngela.

Omboka, taa kunu nokulila omahodhi,
Oyo taa ka teya nyanyu lyopombanda,

Oyo taa ende nokulila, sho taa fala ko ombuto,

Otaa ka galuka ko nokuligola, nge taa humbata iihampi.

Eps 126:5,6.

ETAAMBO LYAAPANGI MONANDJOKWE

Aalongwa aape muuvalithi nomuupangi otaa ka taambwa numvo mOnandjokwe, Omuwa ngele e shi hala. Mboka ya hala mosikola yuualithi naa kale ya pita uupangi (Ingeskrewe Verpleegsters) nenge ye na uupangilela (Algemene Verpleging). Mboka ya hala muupangi wopevi naa kale ya pita Vorm III.

OMASIKU GOMATAMEKO:

Aavalithilongwa 1 Kot. 1976
Aalongwapangi 1 Des. 1976

Omaindilo agehe, noonzapo dhahugunina dhosikola yoye, naga tuminwe komukuluntu gwsikola yaapangi kOnandjokwe. Ino dhimbwa wo okutuma ombapila yegongalo.

Ayihe mbika nayi thike kOnandjokwe manga eti 16 Septemba 1976 inaali thika.

Omukuluntu gwsikola
Oshako 2016
ONDANGWA 9270

A taaguluka Jordan

Okamati ketu Simon Shigwana Tukondjeni Kashele koomwedhi ntano, oka hulitha oondjenda dhako moshipangelo shaShakati muwehame uunene, 19.5.76.

Oka valemwa moshipangelo shaShikuku 19.12.75 noka shashelwa megumbo 17.1.76, pamwe nuunona ukwawo uyali, auhe womomukunda Onakaheke, megongalo Okahao. Okwa li omunona gwetu omutiheyali.

Shigwana gwetu okwa taaguluka Jordan nokwa thiki moshilandio Sion. Oye gumwe gwaamboka ye tu tegeleleni.

"Ombili nayi kale nane". Olyo ekundo lyaJesus kaalongwa ye konima yeyumuko lye.

Aalongwa yOmuwa aaholike, Omuwa sho te tu ithana ote tu ithananene ombili, oshoka Oye ombili yetu.

Aanegumbo lyAndreas Kashele

OMUKWETU

Oye oshifo shOngeleka onkwaevangeli paLuther yomOwambokavango. Ohashi nyanyangidhwa mOniipa. Omukuluntu gwoshifo omumbisofi dr. Leonard Auala.
Amushanga Rev. Sebulon Ekandjo:

Ondando yoshifo komumvo muSuidwes nomuAfrika alihe R 2.00 kombanda yomafuta R 4.00.

Ondando nomambesitelo naga tumwe kOmukwetu Oniipa: P/B. 2013, Ondangwa.

Omatseyitho agehe gomuntu mwene ohaga futilwa kumwene.

OWAMBOKAVANGO CHURCH PRESS
PRIVATE BAG 2013. ONDANGWA 9270