

# OMUKWETU

Registered at the General Post Office as a Newspaper

10c

## OMUPEHAWILIKI GWONGELEKA NATANGO, NENGE OMUMBISOFI?

Ethaneko lyelandulathano lyOshigongingeleka ndyoka lya zi mombelewa yOngeleka, mulyo otamu holokele ehogololo lyomuwilikingeleka omupe. Uuyeleele owa monika wo wa ziilile mombelewa ndjoka kutya omupehawilikingeleka ngoka e li po ngashingeyi, okwa nyola nale ombilive yedhimbulukitho, ndjoka pakutala tayi ka leshelwa Oshigongingeleka nuumvo kutya ethimbo lye yakulo lye olya pwa ko.

Oshigongingeleka 1973, osha tokolele ngaaka omupehawilikingeleka a longe owala sigo kOshigongingeleka oshikwawo tashi ka landula. Inaku popiwa sha, kutya konima yaashoka otapu ka tsikilwa ngiini.

Oshigongingeleka shiyaka osha tokola wo kutya omumbisofi gwOngeleka na tsikile natango oshilongayakulo she sigo okomumvo omutimilongo heyali, ngele ukolele we otau shi pitika. Ye a pe we omuyakuli gwe (omupehawilikingeleka) ngoka ta kala sigo kOshigongingeleka tashi ka landula.



Omupehawilikingeleka K. Dumeni

Omumbisofi gwOngeleka okwa adhika a pulwa moshigongi shaasita yOngeleka ya ELOK, ngele okwa dhiladhila oku ka indila Oshigongingeleka shi mu pe evululuko lyomiilonga. Eyamukulo lye olya li ngeyi kutya:

Oshigongingeleka osha indilile ndje owala ndi tsikile sigo okomumvo omutimilongo heyali guukuluntu wandje, nonge pe na ukolele. Omumbisofi okwa gwedha ko a ti: Nuumvo ote ka tsakanitha omimvo 68 muKotoba. Oshigongingeleka tashi ka landula, siku shi ningila, otashi ka adha nda tsakanitha nale omimvo omilongo heyali niihupe. Nena osha ya pombambo netokolo lyoshigongi.

Oshigongingeleka shonuumvo ngele osha tompelwa kefatululo ndika, kashi kala inaashi hogolola omumbisofi omutiyali monkolonkolo. Nenge shila okweetha manga etokoko lye-wiliko lyOngeleka lyopaumbisofi, elala lyontumba, sigo elyenge lya tsikilwa ishewe kumwe.

# OMUKWETU

Registered at the General Post Office as a Newspaper

10c

## OMUPEHAWILIKI GWONGELEKA NATANGO, NENGE OMUMBISOFI?

Ethaneko lyelandulathano lyOshigongingeleka ndyoka lya zi mombelewa yOngeleka, mulyo otamu holokele ehogololo lyomuwilikingeleka omupe. Uuyeleele owa monikawo wa ziilile mombelewa ndjoka kutya omupehawilikingeleka ngoka eli po ngashingeyi, okwa nyola nale ombilive yedhimbulukitho, ndjoka pakutala tayi ka leshelwa Oshigongingeleka nuumvo kutya ethimbo lye-yakulo lye olya pwa ko.

Oshigongingeleka 1973, osha tokolele ngaaka omupehawilikingeleka a longe owala sigo kOshigongingeleka oshikwawo tashi ka landula. Inaku popiwa sha, kutya konima yaashoka otapu ka tsikilwa ngiini.

Oshigongingeleka shiyaka osha tokola wo kutya omumbisofi gwOngeleka na tsikile natango oshilongayakulo she sigo okomumvo omutimilongo heyali, ngele uukolele we otau shi pitika. Ye a pe-we omuyakuli gwe (omupehawilikingeleka) ngoka ta kala sigo kOshigongingeleka tashi ka landula.



Omupehawilikingeleka K. Dumeni

Omumbisofi gwOngeleka okwa adhika a pulwa moshigongi shaasita yOngeleka ya ELOK, ngele okwa dhiladhila oku ka indila Oshigongingeleka shi mu pe evululuko lyomiilonga. Eyamukulo lye olya li ngeyi kutya:

Oshigongingeleka osha indilile ndje owala ndi tsikile sigo okomumvo omutimilongo heyali guukuluntu wandje, nongele pe na uukolele. Omumbisofi okwa gwedha ko a ti: Nuumvo ote ka tsakanitha omimvo 68 muKotoba. Oshigongingeleka tashi ka landula, siku shi ningila, otashi ka adha nda tsakanitha nale omimvo omilongo heyali niihupe. Nena osha ya pombambo netokolo lyoshigongi.

Oshigongingeleka shonuumvo ngele osha tompelwa kefatululo ndika, kashi kala inaashi hogolola omumbisofi omutiyali monkolonkolo. Nenge shila okweetha manga etokoko lye-wiliko lyOngeleka lyopaumbisofi, elala lyontumba, sigo elyenge lya tsikilwa ishewe kumwe.

## OHANDI SHIIVA NGAHELIPI NDIHE NA OMALIMBILILO KUTYA OHANDI FYUULULA EULU?

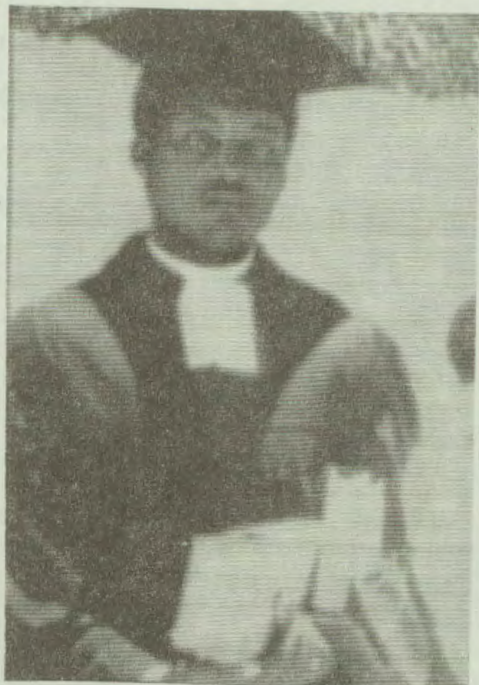
Eulu olo oshinima shimwe shomoilonga yeshito laKalunga, onghee olo oshishitwa shaKalunga shotete nokuli (Gen.1:1). Ngenge taku popiwa eulu okwa diladilwa ashike aishe oyo ili ko ndele ihai monika nomesho, ihai udiwa nomatwi yoo oi li kondje yokushiiva kwomunhu, ashike okwa itavela nokutya oko i li shili. Neulu inatu diladila ashike evalelwa, eehani, omadu, eenyofi naaishe oyo ya tunga oilyo yetango (Sonstelsel) ngaashi tu i na 9 noilyo yomatango aishe kumwe 190. Ndele otwa diladila onhele opo pe na Kalunga. Eulu olo ola kufa oule aushe wopombadambada no-woposhi, oule womolumbubu nolumbubu mokutala eshito alishe. Eulu olo onhele youyadi aushe wouwa waKalunga omamba omo mu na oipako aishe youwa. Omwa tuvikilwa ouyuuki ouyapuki, evadimo, oshili, ohole, ombili, ehafo nenyakukwo nekuwililo nokwiimba kuhe na edimbuko. Eli olo olupe leulu olo Kalunga a udanekela ovanhu. Eulu olo onhele yovayapuki, ovaengeli naaveshe ovo va xupifwa mo mounyuni ou. Eulu olo Ouhamba waKalunga omo Kalunga mwene ta pangele. Ndele eulu ongouhamba waKalunga olo li lilepo epepaleko, eyelifo newapaleko; eshito laKalunga (Joh.12:12). Eulu eli olo eulu lipe la pingena eulu likulu omo nowii wamwene ombululu okuya mo (Joh.1:6), ndele olo twa udanekelwa oshitukulwa shetu shefyuululo (Ehol.21:1-5). Onhele ei oyo onhele yefindano eshi Jesus a finda ovatondi aveshe veshito laKalunga. Oilyo ei oyo onhele yefindano onhele yefikilo lovakriste, mOmbibeli oyo oshikunino shaEdeni, Paradisha, oshilongo shaKalunga. Onhele ei oyo onhele omo ovanhu ve na okuya konima yeshito eli eshi tali xulupo ile konima yokukala kwetu kombanda yedu eli. Oshitya shimwe tashi holola okuya mo osho 'okufyuulula."

Omunandunge umwe ota ti: "Oshiwa ngenge omunhu ta limbililwa, ndele ine lilimbililwa mwene." Epulo otali uya nee paife: Ohandi ka fyuulula ngoo shili onhele ya tya ngaho? Ngenge ohandi ke i fyuulula otashi ningwa ngahelipi? Handiya utale kaume! Shoovene oku na onhele imwe tai kondjifa ei noyo OHELII. Oheli oyo onhele oyo Kalunga ina dimina. Ombibeli oye i tala onhele youyehame, onhele yokweekelwashi yo ongokukala pondje yeulu (Ehol.21. Oheli oyo onhele oyo ihe na elandulafano.

Edu omo muhe na ovanhu, moo muhe na omwenyo. Umwe womovanyoli ote i luku "haunyuni". Noitya imwe otai lukwa onhele yOshovafi omo tamu hangika ovanhu va leela voo vehe na eenghono. Otai lukwa onhele yekano laalushe. Eshito alishe olo Kalunga ina dimina olo otali tu omhata neshito laye,

ndele fyee halo twa udanekelwa, ndele omwenyo waalushe oo hatu ke u fyuulula meulu.

Paife oto shiiva nee ngaha uhe na omalimbililo, kutya oto fyuulula eulu ndele haheli: Shotete u na okushiiva osho eshi kutya aveshe ava va shashwa ovo ova ninga ovana vaKalunga novo ove na oufemba aushe uyadi okufyuulula eulu ongoshilongo shaKalunga (Rom.8:15-18). Shaashi owa shashwa oove omufyuululi



**Omusitagongalo Paulus Heita**

weulu. Ndele natango tuu otaku landula okweenda kwoye noilonga yoye. Lulahapu momunhu otamu uya omalimbililo shaashi ke na eitavelo loo, mulo twa diinina nokutya ohatu fyuulula eulu nouwa walo aushe 1 Petr.1:4.

Okukala omukriste otashi yelekwa ongokweenda nondjila. Ngenge hatu ende nokulandula ondjila yaKalunga nena ofye ohatu ka fyuulula eulu pehe na omalimbililo asha, tashi ti okweenda moshili, mouyuki, mohole, medina laKalunga nolaJesus nosho tuu okweenda paipango nopaemhango dOmwene.

Okukala meitavelo lihe na malimbililo nomeetelelo itali tengauka, osho tashi kufa po omalimbilo okufyuulula eulu nouhamba waKalunga. Meulu otamu iwa kwaava velidilulula nawanawa nova efa eendjila davo adishe inadi wapala, va ninga ovayapuki novayuki. Natango onda hala oku shi endulula nawa, kutya nakufyuulula eulu oku na okukala meitavelo (Hebr.6:12. Aveshe ava vehe na eitavelo nove linyateka noilonga yavo ii, itava fyuulula nande eulu (Ef.5:5).

Oshinenelonga eshi shokufyuulula Ouhamba waKalunga ile eulu, osho sho sha longwa kuJesus Kristus. Tashi ti okufyuulula osho shimwe ashike nokunyumuka. Ou a fyuulula eulu oye okwa nyumuka mo mefyo.

*P. Heita*

## IITAYI OYINDJI MOMUTI, IHE OMWENYO GUMWE Joh.15:1-9

Elongo lyokutala oshigwana shalsrael ongomuviinu, olya yelithwa nawa unene mEtestamendi Ekulu. Omuprofeti Jesaja ota ti kutya Israel oshilonda shomiviinu Jes.5:1-7.

Membo IyaJeremia ontopolwa ontiyali otamu hololwa omuviinu gwa tsikwa kuKalunga, ihe ogwi ishitukitha, gwi itula monkalo yomuvii-nu gwomomugulu Jer.2:21. Nampaka oshigwana shalsrael tashi popiwa. Olupe lwalsrael okuhokololwa pamukalo gwomuviinu otatu shi adha opendji ngashi mu Hos.10:1, na Eps.80:8.

Efano olya kuthwa koshimeno nenge komuti ngoka hagu tekulwa olwindji nependji mu-Palestina. Iitayi yomuti nguka oyi na egamo lyokusa ooshimwe nooshimwe, manga ekota li na omwenyo.

Omuputudhi oha tete mo iitayi mbyoka ya sa nomuti aguhe otagu kala gwa ziza nawa tagu holola omwenyo. Iitayi ohayi kala po oyindji momuti nguka ihe ayihe otayi pewa omwenyo tagu zi mekota limwe aiike.

Mpaka otapu adhika shono shuukumwe wo-itaali nenge wOngeleka tashi popiwa komuyapostoli Paulus. 1Kor.12:, uwindji womaganohenda tau zi mombepo yimwe. Nenge shono tashi monika ngashingeyi sho Oongeleka tadhi kongathana notadhi itula kumwe. Otadhi idhimbulula kutya odha valwa mugumwe awike, Jesus. Joh.17:21.

Elongo IyaJesus lyomuviinu otali tameke mu-shono sha tseyika nawa. Ihe ota tsikile ko mokuyelitha nkene ye e vule omuti ngoka. Oku vule oshigwana shalsrael. Ye omuviinu gwashili (alethinus). Oshitya shika alethinus (gwashili), inashi uvika mEtestamendi Ekulu. Lwomulongo Jesus ote endulula moovelise ndhika ekumagidholondodho, aantu ye ya kale mu ye. MuJesus otatu likola iinima ya si-mana.

- Uuvalwa womuKalunga
- Uuyuuki womeitaalo
- Uuthemba wokukala mpoka Jesus aluhe e li po.
- Otatu yelithwa kevaangeli Iye. Pondje ya-Jesus omuntu okwa nyata noye oshitayi sha sa.

Sebulon Ekandjo

## MONDJOKANA ELAGO NENGE OMUPYA

**Kalunga sho a hokanitha ondjokana ya tatekulu Adam nakuku Eva, okwe yi tula oshihako she, yi kale aluhe ya yambekwa. Ondjokana oyo ehangano lyethimbo ele.**

Kalunga oye ta tula kumwe ondjokana. Iigwana niilongo hayo ya dhika ondjokana. Aaheberi yonale nge taa tumbula ondjokana, ohaa longitha oshitya eigandjo nenge eiyapulo. Naanaa ngashi tse tatu igandjele notatu iyapulile Kristus oomwenyo dhetu.

## Oshoongalele kashi li vali mOniipa

Ombelewa yomumbisofi wa ELOK, oya shiivifa kutya Oshoongaleleleka osho kwa li shi na okuningilwa pOniipa, pexulilo la Juni neudo, osha pungululiwa kOukwanyama, mEngela. Elunduluko ola etwa po eshi kwa iwa momalongekido asho. Omafiku Oshoongalele inaa lundululwa.

Konyala ovakwashoongalele 250 ve na onda-ka momatokolo ova teelelwa musho. Mokati kavo omu na ovakainhu 35 novafita vOngeleka 94. Ovaenda vahapu yo meengaba dOngeleka nopondje ova teelelwa mo

Oshoongalele otashi ka kala nenge Kalunga e shi hala moipundi omafiku 10 nokuninga omatokolo moinima yOngeleka mefimbo eli. Ovaitaveli aveshe otava indilwa va dimbulu-ke oshoongalele eshi momailikano.

Sebulon Ekandjo

Omunandunge nomwiilongi gumwe Funeke, okwa tumbula a ti: Ngele to yi mondjokana nena oto piti ngele momweelo gwelago nenge gwomupya.

Osho shili, ondjokana otashi vulika yi ninge oheli yokombanda yevi nenge oparadisa yokevi. Shika ohashi uthwa unene kungoka wa hogolola u ye naye mondjokana. Ngele omuntu nguka mwa ya naye mondjokana otamu vulu okulungela kumwe, ondjokana otayi vulu okukala oparadisa yokevi, negumbo ndyoka otali kala ehala lyevululuko, unene tuu aye-he yaali ngele taa kala metilokalunga.

Mupya munene pethimbo lyongashingeyi omawi ogendji, otaga kondjitha ondjokana. Yamwe taa ti:

“Ondjokana uupika, nenge otiibii”.

Yamwe taa ti nokuli, ondjokana oshinima ashike shomuntu mwene, onkee inashi pumbiwa shi yambeke-lwe mOngeleka.

Yamwe taa ti kutya nashi kale sha manguluka, uuna aahokani itaa tsu ya thithe, naa topoke, uupyakadhi nowa hulu po.

Osha yela kutya oondjokana ando dhi ethiwe shili, nena ando malwa manene, epiyagano ku mana we. Sigo oompaka inaku monika ando efaneko ewanawa li vule shono sha tamekwa nale kuKalunga petameko lyondjokana. Inaku monika sha natango oshipe tashi vulu okutulwa peha lyondjokana.

Ongundu onene yaantu natango oyu uvite kutya ondjokana oshinima sha pumbiwa noshi na okukala po. Grover Cleveland gumwe gwomaapangeli Aayamerika okwa tile:

“Amerika olya kola, noli na oonkondo, oshoka oli na omagumbo ga kola.”

Sigo onena, ondjokana oyo onzapo yuukolele woshigwana nowongeleka.

Rev. M. Amadhila

Ethimbo nethimbo aandohotola otaa tsakanene naavu mboka taq yematele uuwehame wontumba wa zi miikulya, ya logwa aniwa. Oya pewa nando onyama, ya logwa (osho ya tameke okudhiladhila konima, sho pwa piti omasiku) ndjoka inaayi pita yi ye mela nomomandjandja noye eta uuwehame. Uuwehame owa kala po olwindji ethimbo ele, tashi vulika oomvula odhindji aniwa, sho oshikulya shoka sha logwa inaashi pita.

Paunongo wuunamiti woshinanena omadhiladhilo ngoka oga puka. *Tangotango* osha yela naanaa pamakonakono guunamiti kutya, shaa oshikulya ohashi lunduluka mela nomendjandja muule wethimbo efupi, tu tye lyootundi dhimwe adhike.

Otashi vulika iihupe yoshikulya shonfumba ya pita monyata manga esiku inaali pita. Osha yela nawa kutya ikulya itayi vulu okukala meni lyomuntu ethimbo ele, li thike nando poshiwike, aawe. Aluhe oya pita nale, muule wethimbo lyomasiku gamwe gowala, ngele nani osha pula ethimbo ele.

*Kombinga onkwawo* otu na okutseya nokuzimina kutya, opu na omauwehame gi ili nogi ili taga zi komaudhigu gomwenyo nogomadhiladhilo. Tashi ti, omuntu ota vulu okweehama nando ke na omukithi gwasha miilyo yolutu, ngoka tagu monika momakonakono gomundohotola nogopamashina.

Osha yela kutya, oyendji otaye ehama shoka *kaye na ombili* naashiinda yawo nenge naakwanezimo, nenge ye *na omaumbanda gi ili* nogi ili ngoka taga kudhile omwenyo. Ngashi omaumbanda omolwomaitaalo omakulu (iiponga tayi ka etwa kaathithi, kepaha, koshaaatu n.s.t), nenge uumbanda moku ka kwatwa omoluukolokoshi washa.

Otashi vulika omuntu te ehama *omolwefupa*, ngele lya kala momwenyo ethimbo ele nolya koko nolya ningi enene. Natango tashi vulika yamwe ya kwatwe kuuwehame *omolwii-mpwiyu yawo oyindji*, ngaashi iimpwiyu mbyoka yuukuluntu noyokuwilika aanashilonga oyendji, nenge iimpwiyu yaakuluntu noyaalongi yokuputudha aanona n.s.t.

Osho ngeyi uuwehame wolutu wi ili nowi ili otau vulu okuza momaudhigu ga tumbulwa. Otashi vulika omuntu te ehama omutse nenge mela. Olwindji ikulya ya fa itaayi piti nawa notayi ehameke ontulo; omutima otagu dhenge noonkondo ethimbo limwe, na iifudho ya fa inaayi gwana. Pomutima otapu ehama notapu fulu shaa tuu a lya sha; oku na ehalo lyokukunga n.s.t.

Onawa ngele aantu ya tya ngaaka taa mono ompito okukonakonwa nawa moshipangelo. Ngele momakonakono inamu monika omukithi gwasha gwiilyo yolutu, tashi vulika sha kwatha nokuli omuvu ngoka sho a mangu-lulwa kuumbanda mboka tau mu tilitha kutya, ngiika a kwatwa komukithi omudhigu kaagu shi kupangwa.

Ngele omuntu a kwatwa kuuwehame womwenyo, ota pumbwa ehungomwenyo ndyoka tali koleke omukumo gwe notali mu mangu-lula muumbanda nokomadhiladhilo omawinayi.

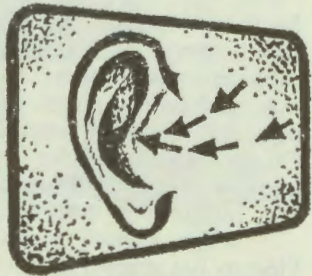
Okukwatha nokwaambidhidha omuntu pamukalo nguka neitulomo nohole otaku kwatha ku vule omiti ndhoka tadhi pumbiwa wo esiku limwe.

H. Kyrönseppä

Jesus ota ti ngiini kii-lyo mbika yomuntu? Eho lyoye uyelele wolutu. Eho lyoye ngele oli li nawa, nena olutu lwoye aluhe olu na uyelele. Ihe eho lyoye ngele ewinayi, nolutu lwoye aluhe olu na omilema. Mat.6:22.



Kehe shoka mwe shi popi momilema, otashi ka uvika muyelele, naadhihe ndhoka mwe dhi nongona momakutsi moondjugo, otadhi ka uvithilwa kombanda yoongulu. Luk.12:3.



### "NAAPAGANI IHAYE SHI NINGI"

Kombanda yevi kaku na omuntu iha simaneke Kalunga. Eyooloko oli li owala mpoka kutya, yamwe otaa simaneke Kalunga kashili omunamwenyo, nooyakwawo iikalunga. Kapu na ngoka ta vulu a kale itaa simaneke sha.

Shoka tashi nyanyudha osho shino kutya, mboka haa simaneke iikalunga ohaye yi simaneke ya mana mo nuumbanda netilo enene shili. Elongelokalunga lyawo olyiifundja. Mii-gwana yetu aantu mboka ohaa simaneke Kalunga kaNangombe. lipango ye oyo: uulodhi, aathithi, eyanekelo, epaha, oshaatu, uupili, nosho tuu.

Aapagani ihaa gwithile nando shimwe shaambika pevi, opo yaa yone kuKalunga kaNangombe. Ohaye yi simaneke nomazigudhe. Ohaye yi yambele nomukalo kehe taa vulu, nagu kale otagu ya pula eliko nenge uuwehame u thike peni.

Oshongeyi otaa simaneke Kalunga kawo, oshoka oyo iipango yaKalunga kawo. Ndika oyo elongelo lyiikalunga, oshoka aantu mbaka ihaa ende kOngeleka, nezimba lyuukriste kaye li hole.

Mboka yi ishashithile medhina lyaKristus, ohaa lukwa aakriste. Mboka ohaa longele Kalunga omunamwenyo. lipango yawo oyi li omulongo. Ohayi monika mu2Mos.20:3-17 no-mOkatekisa komanyolo omayapuki.

Tu taleni iiholelwa yilwe yaakriste: mOsoondaha, aakriste atuhe mOngeleka otwi imbi nuulaadhi: "Ondjila yomwenyo oothina yi na: .." Moontundumene mOmaandaha, otandi pundauka tandi yi kokakulukadhi, ka lombwele ndje ngo e na egumbo lyandje. Otandi yi ko ndi ka konge uugwanga, oshoka megumbo mwa valwa epaha nenge uupili.

Ongula oyo tuu ndjoka otatu dhipaga oshimuna, oshoka aathithi inaa hala okweetha omunona. Ongula oyo tuu ndjono owa tegelelwa komugongo koontamanana, oshoka omu dhi na po noyaaNtumba, haa lala taye ku piyaganeke anuwa.

lipango mbino tayi ngwangwalitha omukriste nguno, hayo tuu yaKalunga kaNangombe? Nguno kagu shi omulandu gwaamboka inaa-

ya tokola okwiishashithila medhina lyaKristus? Hayo mbino nda tumbulile: "Eeno onda hala oku yi etha," sho nda pulwa meshasho?

Aantu twa tya ngeyi tatu li oompanda mbali, ndhoka nomukulu gwonale kee hole tadhi liwa, oyayee yetu otayi kugaganwa kaalilasa yetu. Eeno, oyayee yetu otayi lilwa mokule.

Otatu vulu ngiini okulonda ethimbo olyo tuu ndyoka tatu londoloka? Otatu kongo shike moshigunda shaKalunga, manga tu li natango oonzi dhaKalunga kaNangombe?

"Ethimbo lyetu olyuuluma ...." Tu tokole nena olye ngoka twa hala okulongela twa mana mo. Tu kuthe mo einingitho tse tu tule mo eithikameno.

Mehololo 22:12 otaku ti: "Tala otandi ya mbala, nondjambi yandje ondi yi na, oku yi pa okehe tuu ngoka shi thike piilonga ye." Tu tokole, tse tu matuke twa mana mo.

S. Magano Shikongo

Mpaka ope na e-fano limwe ndyoka lya thanekwa pethimbo lyiilonga yepango lyomuntu pamukalo gweputuko. Eputuko mpaka otaku dhiladhilwa uukwangundu mboka wa tula oshilonga pokati, tau paathana omayele notau kwathathana mokuuvako iikitakani mbyoka yi na sha nomutungilo gwo-meni lyomuntu.

Patiyali eputuko otaku dhiladhilwa ontseyo yokutunyuna uukwameni womuntu u holoke kombanda nou vule okukonakonwa noshu tuu iikwamashina yokuminikila nokumona shono omeho gokomutse ta ga nyengwa oku shi mona.



## MUANGOLA, NATANGO EVANGELI OTALI UDIFWA

Omukundaneki umwe okwa popya nokutya oshilonga shopamhepo muAngola, oshilongo osho sha kala noupyakadi woita, paife ota-shi hovele okweenda nawa.

Nande okwa kala oumbada movanhu kave shii osho tashi va hange noiponga meendjila ya li



Gumwe gwomaanashilongatumo muAngola, Kamho

ihapu omolwoita, alushe ova hetekela okukonga eemhito dokwoongala peendjovo daKalunga. Osho a hokolola.

Pashiivifo eli, ovanhu ve dule 200 ovakulunhu nounona ova shashelwa meongalo, Onamayaka, 1975. Konyala 50 ova pamekwa.

Okwa konekiwa ondjuulufi inene yokuuda eendjovo daKalunga unene mokati kOvashiho-kwi. Ndele eenhele odi lyaafane kokule novanashilonga ovanini manga. Eongalo eli oli na oinagosa i dule 6.

Ovalumenhu vavali otava tekulilwa paife ouyevangeliste kOshangalala notava ka ninga ekwafo linene meyakulo levangeli. Onamayaka oshiiimati shimwe shomoiimati yetumo lOngeleka onghwaevangeli paLuther yomOwambokavango moshilongo osho.



## MPLA kee shi omukomunisi

Emilio de Carvalho, gwOngeleka yaMetodi muLuanda, Angola, okwa popi muLondon o-masiku ga zi ko kutya Epangelo ndyoka epe lya lala oshipundi shaAngola, MPLA, kali shi nando ekomunisi.

Omumbisofi okwa ti kutya ngashingeyi oye na emanguluko lyelongelokalunga shi vule sho ya li mepangelo lyaKaputu. Okwa ti wo kutya emanguluko ndyoka ya kala taa kondjele olyokupangela yo yene okukalamwe-nyo kwopamahupilo opo ku hupithe omuntu kehe moshilongo.

"Ekondjo enene ndyoka tu na ngashingeyi moshilongo, otwa hala okwiidhimbulula kutya nani natse wo aantu tu na oshilonga tu thike paantu ooyakwetu yalwe muuyuni," osho omumbisofi Carvalho a ti.

## TWA TAAMBA AAYENDA

Tse yomuuninginino wOwambo numvo otwa kundu aayenda yopaali, Ongeleka ya N.G. ndjoka ye ya momukunda Ovikange, Ongeleka yokOrumana ye ya yi ninga aashinda shetu.

Ihe aakriste yetu inaa tseya Ongeleka yawo, yo inaa yoolola eitaalo nOngeleka. Kristus mwene gwetumo ngele lyaELOK nenge lya N.G.K. oku shi shi kutya nguka ogwegongalo lini.

Yamwe yetu ohaya gongala kOngeleka ndjoka nokulya Uulalelo Uuyapuki. Pamwe omolwompumbwe yomayakulo ndjoka tu na, nenge ongiini, walyewo.

Otwa kundu ishewe aatembuki yomuAngola ya tauka mOputu. Aantu mboka oyo Ova-dhimba vAmutana, mboka ya tanena Otjilongo. Oye li momukunda, Drae, moka mwa li olukanda nale.

Omukriste omuholike, otu shi shi kutya omwa hokwa okupulakena sha shomomapya getumo moka tuiitula mo nale. Tse yomomikunda ndhika Ombuumbu, nOvikange, otwa pumbwa ngoka te ya okupopitha aayenda mbaka tu ya na yopaali.

Oonakutembuka mOputu oyo aapagani na-nona yawo inaa tseya Omukulili gwawo. Ila u tale shoka shi li huka.

Oohapu dhaKalunga odha gwanithwa sho tadhi ti: "Iilya oyindji ihe aalongi aashona." Mat.9:37-38.

Ev. Jonas Tjikulya

## A PANDULA EYAKULO

Abraham E. Nuule, gwomegongalo lyaElim, ota gandja olupandu kwaamboka ye ya kwa-tha poosa dhomumwayina Paulus J. Nuule (23).

"Otandi pandula uunene aamwameme yomomboni yaRösinga naWalvisbaai. Aalilankali ayehe otandi ya kundu noohapu dhi li mu Joh. 14: 1," osho Nuule a ti.

Pakuuva nakusa nguka okwa dhipagelwa kumukwawo pomina yaRösinga, mpoka a li ha longo, 1. 1.5.76.

## EYAKULO LYOPOSHIKANGWA, OSIMA TUU?

Opwa pita ngashingeyi oomvula 100 evaangeli sho lya uvithwa mpaka, noomvula 50 eputuko sho lya taambwa miigwana yetu. Shika inashi eta sigo onena elunduluko epe mepango lyoposhikangwa. Inali kokithwa, lyo inali hulithwa po.

Oyendji methimbo ndino oye na uunzapo wokupopila shono tashi longwa koonganga hadhi longele poshikangwa. Otaa hempulula nkene ya kuthwa kudho omazinyo, omayoka nenge iinamwenyo yilwe momalutu. Nkene ihe mbika tayi hilwa mo, nonkene ya holo-kele mo momalutu, kaku na ngoka ha gandja eyamukulo tali tompele omuntu oshili.

Iipangelo yopashingolo sigo onena inayi popila nando epango lyoposhikangwa. Ongeleka wo nayo inayi pulakena nando onganga yimweyime nkene hayi longo, yo inayi sila aakriste ohenda mboka yi ipangitha kudho.

Oonganga wo nadho inadhi katuka onkatu yasha okufatululila mboka taya patana eyakulo lyawo. Osho wo odha nyengwa sigo onena okugongelathana opo dhi paathane oondunge meyakulo lyadho ndyoka tali patanwa.

Moshinima shika opu na gumwe ta luluma unene, ta thelekenywa. Ngiika ke shi onganga ndjoka pashiwambo kwa tiwa, oyi lile po okulya, yi lile po okupona. Nganga iipewa ye ohe yi pewa kumboka ye mu zimina nosha pwa.

Omuthelkenywa ke shi wo ngiika omupangi nenge omusita ngoka ta thiminikwa pamauthompango okupangula mboka yi ipangitha. Mboka taa thelekenywa unene, ngiika oyo mboka yi itaala oya logelwa omayoka meni lyawo noya humbata aluhe uunkundi wokolutu nowokomwenyo.

Mboka uuna taa hupithwa koonganga miinima mbika paitaalo lyawo, nena oye shi shi inaa hupa kenyenyetelo moshipangelo nenge kegeelongeleka megongalo. Ethimbo ele lya piti po tu li noshinima sha tya ngeyi mokati ketu, noyendji otaa si kusho mokwaashisha nenge meiyekelelo.

Onda tala ethimbo ngashingeyi olya pya, oshinima shika shi talwe nomeho omanene, unene kumboka taye shi pangula opo pu fulwe muule omakotokelo ngoka taga adhika meyakulo ndika nopolu dhimbululwe oshili ndjoka ngiika ezimba lyayo hali hili aayakulwa.

Ehala lyokukonga uuyejele mbuka oli li tuu miigongingeleka, miigongi yitayingeleka nenge omooskola dhomakoleko?

### OVETA YOKUKWATA AANTU

**Oveta yokukondjitha ukomunisi muSuidwes-Afrika oya pewa edhina epe yi kale tayi ithanwa "oveta yegameno lyoshilongo 1950." Paveta ndjika okomitiye yokukonakona iinima paveta otayi vulu okutotwa po okukonakona ekwato lyakehe gumwe a tulwa mondholongo. Ekonakono otali ningwa pamusinda gwoveta ndjika.**

Okomitiye yaantu yatatu otayi hogololwa komupresidende gwoshilongo sha S.A. nomunashipundi gwayo omangesitrata nenge hahende.

Mbaka otaa konakona oshinima shomuntu muule woomwedhi mbali, okutala shono shi li po nokupewa ehokololo lya nyolwa nenge ngele sha pumbiwa otaa pulakene ehokololo lyonkwatwa.

Oministeli yuuyuuki itayi mangwa komalombwelo gokomitiye ndjoka, ihe omunisteli nguka ota kala ha etele omutumba gwepangelo (opalamente) ehokololo lyokomitiye.

Oveta otayi gandja oonkondo koministeli yuuyuuki dhokumweneka aantu yontumba ngele otaa talwa kutya iilonga yawo otayi yono oshilongo nelandulathano maantu.

Oministeli otayi vulu wo okumweneka ehangano, nenge iinyolwa ya talika tayi gandja uuyejele tau yono po egameno lyoshilongo nelandulathano.

Paveta ndjika omuntu ota vulu okukwatwa nokweedhililwa inaa tseyithilwa sha muule womasiku ngele ogendji gaheyali. ligongi noma ngundumano omakwawo taga limbilike otaga vulu okumwenekwa paveta ndjika.

### HAMUNTU GULWE A PITIKWA OKUTYA KO SHA

**Oonkundana kehe dhi na sha noondume dhomomuthitu, omadhipago gaantu ngaashi mOwambo, odha indikwa okupopiwa nokutseyithwa komuntu gulwe. Oministeli yegameno ya S.Afrika oyo ayike yi na uuthemba mboka okutya ko sha kiiningwanima mbika.**

**(Suidwes-Afrikaaner 11/5/1976)**



**OKUUYA KWAJESUS OKUTIVALI MOUNYUNI**

Omwene Jesus eshi a tya ote uya vali, itashi ti oku na okwaaluka mombelela, opo ovanhu vokombada yedu ve mu mone. Omwenyo ou wopedu okwe u yandja ekulilo nonghe iha dulu vali oku u monunuz.

Eshi eu ile mefimbo linya lotete molupe lomunhu kombada yedu, osha li elininipiko laye. Hebr. 2:9, Mokuuya kwaye okutivali, ite ke uya vali ngashi omunhu a ninipikwa, e duliike kovaengeli. Ndele ongomushitwa wopamhepo moshinge shaye shaalushe Mat. 25:31.

Eshi oshi li hano ngaha, kutya okwaaluka kwaye okutivali meenghono doukwaulu, itaku kala ku wetike komunhu wopedu. Manga ye kwa li ina dja mounyuni, okwa lombwela ovahongwa vaye:

"Okonima yokafimbo kanini, oonyuni itau mono nge vali. Joh.14:19. Omwene Jesus paife oku li oshidimbulukifo shaXe nonghee e li pamwe naXe mouyelele uhe shii okweheniwa puwo.

Omwene Jesus okwa xunganeka oinima ihapu tai ka monika, oyo tai xunganeka osho shi na okuka kala edidiliko linene. Omwene Jesus okwa tambula eenghono douhamba. Oye ohamba youhamba. Oiningwanima oilipipo tai ulike edidiliko eli? Epulo eli ole uya yo nomovahongwa vaye Mat. 24:3. Enyamukulo laJesus ola li:

"Oiwana otayi ka f kafenafana nouhamba umwe otau ka homona ouhamba ukwao. Notaku ka kala eendjala nomikifi nomakakamo edu moshilongo noshilongo. Oinima ei aishe cyo ehovelo loudjuu. Mat.24:7-8, Luk.21:10-11."

Molweendjovo edidiliko lakula otali monika moi-ta yakula younyuni momido 1914 fiyo 1918. Omwa li oiwana omulongo, itatu tai kondjifafana, onghene ya lukwa O.ta yotete younyuni.

Okwa kala yo ondjala noudu meenhele dihapu konima yoita younyuni eshi ya xula. Oinima ei oya kala tai eta oluhodi linene noluhepo kombada yedu.

Ovanhu vokombada yedu otava tila nokulimbililwa mokuteelela oinima tai ka hanga oonyuni. Luk.21:25-26. Omauliko aeshe otaa ulike kutya Jesus okwa tambula eenghono douhamba waye nomeulu nokwa hovele ta pa.gele tadi meulu fiyo okombada yedu.

Ndele omo.wash.ke o ningwanima ei ikumwifa i na okweenda pamwe noixuna noudjuu mokuya kombada yedu? Enyamukulo kepulo eli, lesha Ehol.12: Satana kakwa li a hala ouhamba waKalunga u hovele okupangela, ile u daiwe ngashi sha shangwa. Okwa li a hala epangelo ledu li kale laye alishe.

Ndele opa kala nee olwoodi linene pokati kovakwaita vaJesus nongudu yovakwaita vaSatana. Satana okwa tewa mo meulu pamwe novakwaita vaye. Ehol.12:7-10. Satana eshi kwa li e shi shii kutya exulilo lepangelo laye ola fika, okwa li nee e na okuninga po sha, opo a keelele ovanhu kuKalunga kavo Ehol.12:12.

Ndele ei aishe ngenge tai hovele okuningwa, taleni pombada, yetueni omitwe deni keulu, osheshi exupifo ni ola ehena popepi Luk. 21:28.

Abraham Haileka

Oongeleka dhimwe mpaka naampeyaka nando dhi itsa omukumo okuyapulii omukiintu moshilonga shuusitagongalo, onkene ngaa epulo ndyoka otali thikamene Oongeleka o-dhindji. Oongeleka yaSoomi oyo yimwe ya kondjo ethimbo ele nepulo ndika.

Epulo ndika olya holoka wo nomefanekolandulathano lyOshigongingeleka mu ELOK nuumvo. Moshigongingeleka sha piti okwa li epulo epu ndyoka nalyo wo lya li inaalii pita, ngele omukiintu a longwa uuteologi, ota vulu okuyakulila moshivithilo.



Yaali yomaateologi aakiintu mOongeleka yetu oya thikama mpaka taa kundathana. Efano olya kuthwa pethimbo lyoshigongi shaasita yOongeleka nuumvo.

**Aaongo ya kutha ko oongaku**

Oongeleka dhaakriste muCongo odha popila okweekelahi omuthigululwakalo gwoshilongo paigonda yomukiintu, osho wo ondjokana yaakiintu oyendji.

Etumwalaka lyOongeleka olya tumwa komu-presidende gwoshilongo shoka, Marien Ngo-uabi, moka ya holola omadhiladhilo ngaka noku indila shi ningwe oveta yoshilongo. Omupresidende wo ngoka ta popile onkambadhala kehe yokweetha po omikalo omikulu itaadhi eta we uuwanawa washa, okwa ti kutya:

Shika osho ekondjo lyoshilumentu okukondjitha omikalo dhonale dhaa na we etungo.

Africa Acts

**OMUKWETU**

Oye oshifo shOongeleka onkwaevangeli paLuther yomOwambokavango. Ohashi nyanyangidhwa mOniipa. Omukuluntu gwoshifo omumbisofi dr. Leonard Auala. Amushanga Rev. Sebulon Ekandjo

Ondando yoshifo komumvo muSuidwes nomu-Afrika alihe R 2.00 kombanda yomafuta R 4.00.

Oondando nomambesitelo naga tumwe kOmu-kwetu Oniipa: P/B. 2013, Ondangwa.

Omatseyitho agehe gomuntu mwene ohaga futi-lwa kumwene

OWAMBOKAVANGO CHURCH PRESS  
PRIVATE BAG 2013. ONDANGWA S. W. A.  
9270