

OMUKWETU

Registered at the General Post Office as a Newspaper



**EKUNDO LYOKRISMESA ONTI 1975
NOMAHALELOYAMBEKO GOMUMVO OMUPE 1976,
KAALESHI YOMUKWETU AYEHE**

Omuleshi kehe gwoshifo shetweni, "Omukwetu",

Nomwenyo gwandje aguhe otandi ku halele Okrismesa yenyanyu no-yomayambeko, kungoye mwene no kuayehe yoye.

Pamwe nekundo ndika lyOkrismesa otandi holola wo mpaka kutya omahalelo gandje kune aaleshi amuhe yoshifo shika shetweni ogo: Kalunga a endithe iinima ngaaka kutya omumvo omupe 1976 gu ku etele wo elago, muuyuni muka nohandiyaka.

Otandi hambelele Kalunga sho, nani nangame wo, Leonard Auala, nda pewa ohenda ndjika okukala miilongayakulo yOmuwa, nokuyakula aantu yaKalunga omumvo nguka wo 1975.

Mongeleka yetu Elok nomoshigwana shetu, omumvo nguka 1975 kagwa li omupu. Otwa tsakanekwa ngaa komaudhigu ogendji ngashi ga kala hage tu landula nomomimvo ndhiyaka dha pita.

Mokutala omaudhigu ogendji ngoka ga kala tage tu tsakaneka na ngoka wo tage ke tu tsakaneka ishewe, onda hala tu idhimbulutheni mpaka shoka omuyapostoli Petrus mEpistoli lye lyotango montopolwa onti 4 mooverse 12 no 13, sho a kumagidha ootaali ye li muudhigu ta ti: "Aaholike, epuppyu ndyoka mu li mo olyoku mu yeleka, inamu li kuminwa ongo-shinima inaashi monika nale aawe, nyanyukweni nenyanyu li thike poshipewa sheni shomomahepeko ga Kristus..."

Natu idhimbulutheni ishewe ekotadhiladhilo miigongi ayihe yopangeleka mu Elok, omumvo 1975, olya kala: "Ohole onene yi vule ayihe mbika." Uunene wohole yaKalunga otwe u hololelwa nawa miigongi yopangeleka ayihe, mu Elok, omumvo nguka aguhe, okuza Januari sigo Desemba.

Mokudhimbulula uunene mboka wohole yaKalunga okuhola omulunde kehe, pamwe otwa gwana nokuli okutumbula onga Paulus kutya: "Olye ngo te tu topola mohole yaKristus? Uudhigu ando nenge oothina...?"

Mokuhulitha omumvo nguka 1975, Okrimesa otayi ti: Kalunga te tu ulukile natango ohole ye: "Inamu tila, Omwa valelwa Omukulili." Okuvalwa kwOmuna gwaKalunga ta valelwa monyama yetu otaku tu ulukile aluhe ohole yaKalunga okuhola omukuuyuni kehe. Omuna gwaKalunga okwa valelwa monyama yetu opo a kale uvite pamwe natse momaudhigu



Dr. Leonard Auala

getu agehe. Nopo a kale shili pamwe natse omasiku getu agehe. Shika otashi tu pe shili omukumo okutsakaneka shaashoka tashi ke tu adha, kezimino lyaKalunga; tu shi shi "Immanuel" - tashi ti: Kalunga pamwe natse.

Nomumvo ngoka omupe 1976, sho tatu gu pweni ishewe kesilohe-nda lya Kalunga, tu yeni mo ashike nomukumo. Nonando tu kale tu na omapulo gokutya oshike tashi ke tu tsakaneka momumvo 1976? Omaudhigu goludhi lunipo ishewe tage ke tu adha? Aawe, aamwameme, eyamukulo otu li na nale: "Ayehe mboka ye hole Kalunga, iinima ayihe otayi longo mumwe uuwanawa." Omvula yomuzimbi tagu loko nombili okututika evi kashona na kashona ohayi nyanyudha iimeno. Ihe, tu shi ndhindhilikeni wo kutya oombepo dhiikungulu nuupyuwetango, ayihe ohayi longo mumwe nomvula uuwanawa kiimeno yaKalunga.

Ngashi oshigongi shaatonateli yitayingeleka ya Elok sha tokola, netokolo ndyoka ngashi lya kolekwa kEpangelongeleka lya Elok, osho tandi mu indile wo, aaleshi yoshifo shetweni, amuhe, tu tokoleni wo atuheni kutya: Momumvo nguka 1976, miigongi yetu ayihe yopangeleka, otatu kaleni metokolo ndika enene kutya: "Hahalo lyandje, aawe, ehalo lyoye, Tate, Kalunga, olyo nali gwanithwe."

Epangelongeleka lyeti 25-26 Novomba 1975, moshitokolitho shalyo oshiti 27, olya utha oshipalanyolo 1976 shi kale:

"TATE, EHALO LYOYE NALI GWANITHWE." Luk.22:42, Mat.6:10, Mat. 26:39-42, Mark.14:35,36, ngashi oshigongi shaatonateli sha thaneke.

Jesus-Kalunga-omuntu, muuwehame we uululu sho a li a tokola ngeyi, ekulilo olya longwa lya pwa sigo aluhe. Netegameno lyaaluhe olya za metokolo lya tya ngaaka edhigu.

Osho wo Maria-omuntu, moonkumwe dhe uuna a lombwelwa iinima inaayi uvika nando lumwe okuza keshito lyuuyuni; ina pulapula we nokupopyapopya mpeya na mpeya oonkundana ndhika oonkumithi dhe mu adha. Meinekelokalunga, Maria okwa ti ashike: "Ongame omuntu gwOmuwa, nandi ningwe ngashi wa ti."

Natu tsakanekeni ano omumvo omupe, 1976, tu na etokolo: "Hahalo lyandje aawe, ehalo lyoye Tate Kalunga, olyo nali gwanithwe mungame." Pamukalo nguka ehalo ewanawa nolyohenda lyaKalunga otali ke tu wilika shili notali ke tu pititha nawa muayihe tayi ke tu tsakaneka.

Nopamukalo nguka aguke Ombili yaKalunga, ombili ndjoka yaa na ekudhilo, otayi vulu okugamena oomwenyo dhetu nomadhiladhilo getu muKristus Jesus sigo esiku yehulilo.

dr. L. Auala

**ENYANYU LYOSHILI, KRISTUS,
NALI MU YAMBEKELWE**

Omusitagongalo Matias Nepela, Okankolo ota nyanyukilwa esiku lyokuvalwa kwOmukulili ndyoka li li popepi, nota halele aantu ayehe enyanyu lyaKrisimesa li ninge lyaantu ayehe, aanyanyukwi noonakunikuuthigwa.

"Jesus Kristus, Oye tuu nguka nohela nonena nosigo aluhe. Oye awike tu na oku mu tala ngele tu li menyanyu nenge muudhigu." Ihe kumboka ye na uudhigu ota ti: "Ithana ndje esiku lyuudhigu woye ngame notandi ku kwatha, ngoye e to simaneke ndje. Aanyanyukwi oyendji nomanyanyu oge li po ogendji ihe ogokathimbo muuyuni muka. Enyanyu enene nolyaaluhe oli li muKristus Jesus enyanyu lyashili.

Omusamane Nepela okwa kala tango moshilonga shuuyevangeliste shoka kwa li e shi longo omimvo 1962-1965, nokwa ka tsikila ishewe osikola yuudiakoni kEngela, nkoka a piti ko momumvo 1967. Oshilonga shuudiakoni okwe shi longo uule woomvula ntano, opo ihe a ka tsikila oskola yuusita kEngela 1973 sigo a yapulilwa oshilonga shika shuusi-ta eti 24-11-74.

Enyanyu ndika lyaKrisimesa nali mu yambekelwe lyo li mu valele omumvo omupe gwelago.





Jesus okwa valelwa aantu ayehe yomii-gwana ayihe, yomomalaka agehe, yomomaludhi agehe aayamba noohepele. Omukulili gwetu Jesus Kristus ina valelwa momagumbo ngoka ga simana nenge gaanenentu, okwa valwa maandja Josef mokalando kowala Betlehem, omo moka mwa valelwa omuhupithi gwaantu ayehe. "Esimano Iya Kalunga mokombandambanda nombili kombanda yevi maantu e ya hokwa."

"OMUWA OTWA HALA OKUTUNGILA EDHINA LYOYE ONGULU OMPE, IHE KATU NA IITUNGITHA, TU PA IITUNGITHA, AMEN"

Ndika olyo egalikano Iyomunashipundi shokomitiye yetungo IyOngeleka mOshigambo, pethimbo Iyoshigongi shahugunina eti 1.11.1975. Kalunga okwe li yamukula meti 8.11.1975, moka mwa ningwa ombazaala omolwetungo. Osha li oshinitolipo. Ketiti Iyondjuhwa, kohe-ma, koofenya, kiitenga, koontungwa, no-sho tuu. Aamwameme aalange oya yamukula wo niiniwe yawo. Ongalo yeni mwe yi gongelele etungo oya thika nawa kutse. Ya thikithwa ku mbaka:

Andreas (Kanyama) Benhard
Filemon (Petrus) Uusiku
Jason Nampala

Tangi Kalunga ne mu yambeke aamwameme, mwaa hepe sha.

Pastor Salomo Elago

MWENA, MANGA OMUWA TA KONDJO

Pefuta Iyomanenge, Aaisrael okwa li ya kondekwa koombinga adhihe. Oondundu ondeendeka okwa li dhi ya li kolulyo nokolumoho. Komeho gawo oku na efuta, konima aatondi, Aaegipiti, ye ya landula, ye na iiti nokwa li taye ya ikeshole komayego, opo ye ya lathe po thilu. Etilo, etyololoko neiteko, okwa li tayi pangele omwenyo gwoshigwana shiyaka, pokathimbo heyaka. Okwa li ya tala kape na ompito yilwe we, ihe shila okwiyekelela owala momake gaatondi ye ya kondeka.

Mokati komaiuvo taga dhulunga omwenyo opwa uvika ewi, ndyoka Iya li ongashika eta Iyomeya omatalala kelaka Iyomusinota mombuga, Iya ti: -Inamu tila, Omuwa ote mu kondjele, ne omu na okumwena thilu!

Mokupulakena nomokuuva omakolokoto giita, geso, gondholongo nokutaalela omapangulo omadhigu, mokuhulwa aakintu nenge aalumentu yetu, aamwameme, aamwetu, tate nenge meme noshampa tuu oshilyo shoshigwana, mokukundana oondjala nomavu, okukala kwamboka ye li moluhepo nomuuyina ulwe, momatembu nomomalimbililo, omwenyo otagu kulumana. Etilo netyololoko otali ya momwenyo nopompoka tashi vulika eitaalo tali nika oshivundundu, oshoka omalimbililo otage li siikile. Nena omuntu a lambelwa nokwa gwili-lwa po kuudhigu wa tya ngawo, otashi vulika a dhimbwe elombwelo: Omuwa ote mu kondjele, ne omu na okumwena thilu, Ota tameke okwiikwatha nokwiimangulula aniwa maatondi mboka ye mu kondeka. Sho ta dhimbulula ke na onkondo dhasha tashi landulako eiyekelelo. Ano opompoka omalimbililo otage mu ninagula, ihe mokati komalimbililo nomuudhigu ulwe ewi IyOmuwa aluhe otali uvika Iya yela: -Inamu tila, mweneni, igundjilikeni meitaalo nomokutegelela Omuwa, oshoka Oye mwene te mu kondjele. Mwena, manga Omuwa ta kondjo.

Shika otashi igidhilwa wo oshigwana shOmuwa muNamibia pethimbo Iyetu. Omuwa a thikama pepandja Iye eyapuki noti igidha: Inamu tila, ikoleloleni, Ongame nda sindi uuyuni notandi mu sindile wo, oshoka Ongame tandi ka tumbula Ohapu yahugunina.

'OMUWA KALUNGA NA SIMANEKWE, OSHOKA E YA OKUTALA AANTU YE NOKWE YA LONGELE EKULILO, NOKWE TU TUMBILE OLWIINGA LWEHUPITHO OMEGUMBO LYADAVID, OMUNTU GWE-OKUTU HUPITHA MAATONDI YETU NOMIIKAHA YAA-YEHE MBOKA YE TU TONDE. A MONITHILE OOTATE OLUKENO YE A DHIMBULUKWE EHANGANO LYE EYAPUKI.'

MWA VALELWA OMUKULILI

Luk. 2.1-14.

Evangeli lyaKrismesa, otali ti: Otwa vaelwa Omukulili. Omuuvithi gwelaka ndika oye omuyengeli, e li uuvithile aasita ya langela iimuna yawo mombuga yowala. Euuvitho ndika otali ya kutse nena, itali pitile we mokana komuyengeli, otali pitile momakana gaantu oyendji yomoludhi lwaalunde, mboka ya vaelwa Omukulili. Esiku ndika lyevalo lyOmukulili euvitho ndika olya hala okuudhitha omakutsi noomwenyo dhetu. Tu li taambeni meitaalo, opo tu mone shoka she tu etelwa kevalo ndika lyOmukulili.

Evalo lyOmukulili olya eta uyelele momilema dhokukalamwenyo kwe-tu. Euvitho ndika mwa vaelwa Omukulili, otali ya mpoka u li. Olye ya kaasita ye li moshilonga shawo shesiku kehe taa litha iimuna yawo. Otali ya muupyakadhi woye. Owa vulwa uunene kushoka she ku tsakanene mokukala kwoye no she ku dhenge. Ongoye tuu wa tuminwa elaka ndika owa vaelwa Omukulili gwoye. Elaka ndika sho lye ya kaasita, olye ya adha ya kутumba momilema dhuusiku wopanshitwe, ihe oya li wo momilema dhuusiku wokukalamwenyo kwethimbo lya-wo. Opwa li uusiku koombinga adhi-he. Kombinga yepangelo okwa li o-mainyengo omanene. Omukeesari okwa li ta yalula aantu yomepange-lo lye, a tale oonkondo dhe odhi thike peni. Aantu oya tila oshike tashi ka ningwa omukeesari sho ta yalula aantu. Kombinga yopambepo, aategeleli yOmukulili oya adhika ya vulwa metegelelo. "Onakuyiwa oya luudha." Okrismesa yomumvo nguka otatu yi dhana tu li mokati kuusiku womainyengo omanene. **Aategeleli yemanguluko oyendji ya vulwa okutegelela. Onakuyiwa yetu oya luudha. Ongoye nguka u li momilema dhethimbo ndika, elaka ndika olyoye, wa vaelwa Omukulili. Momilema dhokukala kwoye mwe ya Omuhupithi. Ino dhimbiwa ku-Kalunga.**



Omuuvithi gwevangeli E. Angula

Elaka ndika, otali eta uyelele momilema. Eeno, otali pendutha etegameno nkoka etegameno lya teka. Euvitho lyomuyevangeli olya ti: Neyadhimo lyOmuwa lye ya adhimine, eyadhimo lye ya kaasita momilema dhawo. Eyadhimo lyOmuwa tali ya momilema dhoye. Eyadhimo ndika kalya li ashike eyadhimo lyomuyengeli ihe, eyadhimo ndyoka lya yela moshipala shaKristus. Kristus a taalela momilema dhe kondjo lyetu te ya. Yelutha omehogoye kegulu, nkoka ku na Kalunga te ku dhiladhila. Uyelele otau zi moshipala shaKristus tau ya muuyuni woye wa luudha. Kalunga ngoka a ti; Momilema namu ze uyelele tau minikile momilema, Oye ngoka a ye-lele moomwenyo dhetu, opo okutseya kweyadhimo lyaKalunga ku minikile, eyadhimo ndyo-

ka lya yela moshiplaa shaKristus. 2 Kor. 4.6. Omumwatate, ino taalela momilema, taalela keyadhimo ndyoka lya yela moshipala shaKristus. Thikama yela, oshoka uyelele woye wa holoka nesimano lyOmuwa lye ku etele oon-te dhalyo. Jes.60.1.

Evalo lyOmukulili otali halakanitha po etilo moomwenyo. Euvitho lyomuyevangeli nehoko po lye, olya hokololwa ngeyi: Aasita oya haluka nehaluko enene. Otu li methimbo ndika aantu ya tila. Ehaluko enene otali pangele moomwenyo dhoyendji. Oyendji oya tila okukalamwenyo kwawo, oye wete inaa gamenwa nawa ngashi okukalamwenyo kwawo taku shi pumbwa. Oyendji otaa kongo omagameno niigamenithi yokwiigamena. Yamwe otaa mono

nando ayihe mbyoka yokuya gamena opo yi li, itaa vulu okuhumbata ashihe tashi ya, otaa i-dhipaga ashike. Ethimbo ndika lyetilo tu li mulyo olyo tuu ndyoka Jesus e li popi sho a ti; Aantu yokombanda yevi otaa sehaluko mokutila nomokutegelela mbyoka tayi adha evi alihe, oshoka noonkondo dhomegulu otadhi ka kakama. Luk. 21.26. Mokati ketilo tu li mulyo, oyendji otaa alukwa uuvu womutima. Mokati ketilo lyetu otamu uuvika elaka ndika, Inamu tila, oshoka tala, ongame otandi mu uuvithile enyanyu enene tali ningi lyaantu ayehe. Etilo otali tidhwa moomwenyo kevalo lyOmukulili peha lyalyo otapu ya enyanyu enene. Etilo oli li mpoka omuntu i uvite uuwike, ihe ngele tapu holoka ngoka e mu vule oonkondo, nena etilo otali zipo. Inamu tila, onena tuu ndjika mwa valelwa Omukulili. O-twa pewa Omuhupithi methimbo ndika lyetilo enene, Oye Kristus Omuwa. Onena ndjika, owa pewa Omuhupithi e ku hupithe mo moondjo ndhoka tadhi eta etilo. Oto hupithwa metilo lyoye alihe komuhupithi nguka oJesus. Oshinima shehupitho lyoye osha tokolwa kombelewa yomegulu. Owa tuminwa nguka ta vulu okuhupitha- shili mboka taa hedha ku-Kalunga omolwe. Etha oonkambadhala dhoye dhokwiihupitha, etha u hupithwe kuJesus ngoka awike ta vulu oku ku hupitha. Etha okwaaitaala, itaala, oshoka ngoka itaala ita kana ota mono omwenyo gwaaluhe.

Atuhe otwa pumbwa okumona Jesus. Ngele tatu taamba shili euuvitho lyohole yaKalunga sho kwa gandja Jesus kutse, nena meni lyetu otamu penduka ompumbwe onene; onnda pumbwa Jesus. Onda hala okumona Jesus mokukalamwenyo kwandje. Euuvitho lyomuyengeli olya pendutha ondjuulukwe okumona Jesus. Omuyengeli okwa wilike aapulakeni ye mpoka taa ka mona Jesus. Nendhindhili-ko mu mu dhimbulule olyo ndika; otamu ka mona okahanona ka dhiingilwa momalapi noka langekwa metemba lyokulila iimuna. Ondjila yokuthika kuJesus oya yela. Oto vulu okumona Jesus, ina holama okwa lala metemba lyokulila iimuna. Inashi vulika Kalunga a tume Omuhupithi gwomunandjo kehe, ihe e ta zimine a kale a holama, aawe, okwe mu tula puuyelee, opo kehe ngoka a hala oku mu mona e mu mone. Euuvitho otali ulike nawa, Oye tuu nguka Kristus Omuwa. Omunwe gwomuuvithi ogwa ulike nawa kuJesus. Oto uulukilwa, Oye tuu nguka Kristus Omuwa. Kaku na omukwawo ehupitho lya kala muye. Oye awike ti. Opo e li shili. Oto pitikwa oku mu mona nomoku mu mona enyanyu enene otali uudhitha omwenyo gwoye ndyoka lya uvanekwa tali ningi lyaantu ayehe. Ompumbwe yetu onene methimbo lyetu oyo okutaamba Jesus meitaalo. Tu mu ethele oshilonga she shoku tu hupitha. Ngoka e na Jesus okwa mona elago lyokukalamwenyo kwongashingeyi naankoka taku ya. Ota piti nawa mesilu ndika lyomahodhi okuya moshilongo shaaluhe shuuyelee. Tu taambeni meitaalo oshili ndjika: Mwa valelwa Omukulili Oye Kristus Omuwa.

E. Angula

KAALESHI YOMUKWETU

Aaleshi yOmukwetu aasimanekwa, mokuyakula oshifo shika ngiika omwe shi ndhindhilike nokuli, kutya omu na omapandja ogendji ge vulithe pugoshito. Aawe, oshinima oshikwanambwiyu; tashi ti mpoka opu na oonomola mbali (22-23) dha tulwa mumwe.

Shika osha ningwa omolwethimbo nehulilo lyomumvo sho lya tya ko nomolwomatompelo wo galwe gopendji. Ota tu mu indile ano ngeyi neinekelo, mu shi taambe noomwenyo dhaahe shi oonkwanambwiyu, ngashi sho shi li.

Twe mu pandulile elongelokumwe ewanawa. Twe mu kundile po noku mu halela wo Okrismesa ya yambekwa nomumvo Omupe gwelago.

Aayakuli yeni mOmukwetu.

KALUNGA E TU SHI

Oomboka taa kunu nokulila omahodhi, oyo otaaka teya nenyanyu lyopombanda, Eps.126: 5-6. Otu li po oyendji mboka tatu ende nomahodhi. Aantu yamwe otaa lili ondjala, oluhepo, uupika, okatongotongo, iilonga oyindji nenge uuwehame uuwinayi. Yamwe ishe-we otaa humbata oondjo dhawo ndhoka inaadhi dhimwa po notadhi ya imbi oomposi nokuli. Atuhe ohatu ipula, kutya komeho otaku ka kala ngiini? Uuyuni mbuno otau uka peni? Oshigwana tashi piti tuu nawa, nenge tashi ka lyatelwa pevi kiita iidhigu? Otatu indile ekwatho lyaKalunga, tatu igidha nokukuga - ihe Kalunga a fa a mwena.

Otse aantu otwa kukuta nolwindji itatu koko muwanawa. Aluhe Kalunga ohe tu makelitha uutoye we, ihe otatu u dhimbwa. Kalunga okwa hala oku tu pa shoka shi vule ayihe yetu, iikulya, iimaliwa oyindji neman- nguluko nokuli ina nyengwa oku li tu pa. Kalunga okwe tu longekidhile wo ehala megumbo lyomegulu. Okukala kwetu muuyuni mbuka okwo elongekidho lyokukonga osheelo shokuya megumbo ndyoka twe li longekidhila nokupitila mosheelo. Osheelo shika osho Jesus - Ogame osheelo - Jesus Oye Kalunga a ningi omuntu, opo tse aantu, aalunde tu wape okuya moshilongo shaKalunga tatu pitile mosheelo Jesus.

Omyapostoli Paulus (Fil.3:7,8), okwa ekelehi iinima ayihe nokwe yi tala oyo iiyagaya, omolwaJesus nopo a likole Jesus, a kale eliko lye lyoshili.

Elaleko lyandje olyo ndika: Jesus a sile ndje. Tandi mu hambelele. Uudhigu ndi u na onde u pewa kuKalunga, opo ndi dhimbulule uunkundi wandje nondi shi ndhindhilike wo, kutya itandi piti nando koonkondo dhandje mwene. Aluhe naakuhe otandi pumbwa Jesus.

Osho wo one muudhigu weni otau mu lombwele, Kalunga ine mu ekelahi. Ote mu kongo, te mu hilile puye. Oye mwene okwa longekidha iinima yetu nalenale nomanga tse inaatu fšeya oku mu indila sha nokuli. Natu mu hambelelени uudhigu wetu mboka u li endhindhilike lyohole Ye kutse.

Päivi Häkkinen

AAWAMBO NAAKAPRIVI INAA HALA WE OKWIITHIKAMENA

Aawambo nAakaprivi inaa hala we, aniwa eipangelo lyi ikalela, ihe oya hala okuhangana nomihoko dhilwe moshitopolwa ashihe sha Suidwes, manga Aakavango inaaya adha natango ethaneko lyawo kutya moshitsa shika okombinga yini po taa gama.

Onkundana ndjika oya li ya uvika moshigongi shaatoolinkundana sha ningililwe mOvenduka omasiku ga piti, moka aakalelipo yomutumba gwoonkundathana dhomukankaveta kwa li ya tsakanene naanifo (pashifo die Suidwes-Afrikaner 18/11-75).

Pehulilo lyoshigongi shoka omutoolinkunda gumwe gwomOvenduka, aniwa okwe shi ulike pontundulu nokutya omutumba gwoonkundathana dhomukankaveta ogwa taamba edhiladhilo moka aakalelipo yomavigumbo ya holola ehalo lyawo okukala ye na oonkondo dhopombanda miinima yiitopolwa yawo nosho tuu wo miinima yevi alihe lyaSuidwes. Omuniifo okwa pula ihe ngele Aawambo, Aakavango nAakaprivi otaa vulu tuu okukoleka edhiladhilo ndyoka tali ti inaa hala we okwiithikamena kuyo yene.

Kombinga yaAawambo aniwa okwa zi eindilo opo epulo ndyoka li endululwe mOshiingilisa. Iya endululwa mOshiingilisa neyamukulo lye ya otali ti: "Edhiladhilo lyetu olyo okuhangana kumwe nomihoko adhihe muSuidwes," Sho epulo olyo tuu ndyono lya ukithwa kAakaprivi, eyamukulo lyawo olye ya kutya yo otaa zimine pamwe nedhiladhilo lyAawambo.

Ihe sho epulo lya pungululilwa Aakavango, mbeyaka inaa gandja eyamukulo lyasha, kakele koohapu dhomusamane Mudge ngoka a kambadhala okupopya peha lyAakavango.

Epulo ndyoka olya pulwa aniwa lya landula omafatululo gamwe goministeli onkuluntu mepangelo lyOwambo, omusamane C. Ndjaba, ngoka kwa li a gandja, konima yomutumba gwootango gwoonkundathana dhomukankaveta, moka kwa li a tumbula natango sha kombinga yeithikameno lyOwambo.

A TINDILWA OPASPORT OLUTIYALI

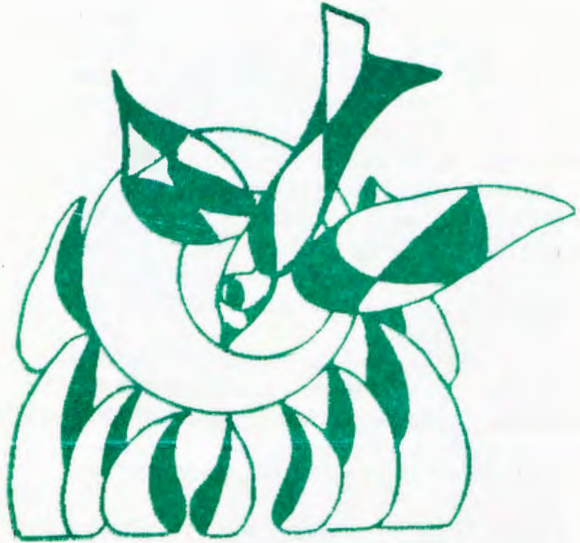
OVENDUKA: Opasport oya tindilwa ishewe omusamane Daniel Tjongarero, ngoka e li oshilyo naAmushanga gwomayelithilo mongundu ndjoka tayi ithanwa Namibia National Convention, noku li wo omunambelewa gwongeleka onkwaevangeli paLuther mu Suidwes.

Etindilwo lyopasport ndyoka olyo oshikando oshitiyali, konima sho kwa li a ningi eindilo, opo andola a ka tsikile neilongo lye moskola yaMunich, okwiilonga uuniifo (Journalism), sho a mana nokwa adha onkatu BA. Okwa li a pewa elombwelo konima yethimbo lya yeleka omumvo gumwe okuza mpoka sho a indile, kutya ite yi pewa.

Meindilo lye lyongashingeyi, okwa li a holola elalakano lye ndyoka lya kwatelelwa metalelopo lye kombanda yomafuta kutya olyo okutalela po miinyanyangidho yi ili noyi ili yaakwaLuther muEuropa nosho muAmerika ando. Pehala lyokupewa elaka lyetindo, okwa shunithilwa owala iimaliwa mbyoka kwa li a tumu kombelewa yoopasport pamwe neindilo, nopwaahe na elombwelo lilwe. "Shika ondi na ngaa oku shi taamba, ihe oneyeme," osho Tjongarero a tumbula.

Omusamane Tjongarero oye wo e li Amushanga gwoshifo Immanuel, oshifo shongeleka onkwaevangeli paLuther muSuidwes. Oku li wo omukalelipo gwa Ecumenical News Service. Okwa tumbula nomuthindo kutya, etalelopo lye kombanda yomafuta kakwa li li na sha nuupolitika, ihe oshali okutoola owala oowino te dhi pumbwa miilonga ye.

Tjongarero okwa adhika ishewe opo a tidhwa megumbo ndyoka lili popepi nombelewangeleka, ndjoka yi li moshilando shaVenduka, nokuthimnikwa a ka kale muKatutura, ehala lyAaluudhe.



"OMBEPO ONDJAPUKI OTAYI KU LAMBELE NOONKONDO DHAANGUKA GWOKOMBANDAMBANDA OTADHI KU SIIKILE."

MARGARET VALENTIM A TEWA MOSHILONGO

Hefolo Margaret Valentim, weedula 30, omulongi mombelewa yongeleka yaAnglikani mOvenduka, okwa pewa elombwelo kepangelo la S.A. opo a fiye po Namibia meemhadi ditalala.

Mefatulo olo la yandjwa komufita Edward Morrow, ou e li paife omutwe wongeleka yaAnglikana noku li omutumba mOvenduka, otali ti kutya elombwelo letewopo lahefolo Valentim ola dja koshikondo shoikwameni. Eshi omufita Morrow a indila kepangelo, opo efimbo olo lanakutewa li lelepekwe, okwa diminwa a kale ashike fiyo 5.12.75.

Omushamane Morrow mefatululo laye okwa wenda ko vali, kutya hefolo Valentim okwa kala omulongi mombelewa omudinini. Okwa lalakanena ondjila youyuki nokwe likola ookaume vahapu moshilongo eshi. Ina ninga sha ngeno shii ndele okwa longa shihapu omolwokukwafela ovanhu vahapu medu eli.

Okwa twikila vali ta ti etewopo eli nando la halula uunene inali uya ongoshinima shokavakela, osheshi ongeleka yaAnglikana ya kala tai hepekwa efimbo lile kEpangelo panghedi ei. Okwa twa ovakriste omukumo nokutumbula kutya: Nonande nee pa katukwe eenghatu di li ngaho, eshi itashi imbi oilonga yongeleka i ye komesho.

Elombwelo lokutapo hefolo Valentim ola dja mombelewa yahamushanga woshikondo shoikwameni, ndele inaku hololwa yo nande etomhelo letewopo laye moshilongo.

Omufita Morrow okwa kundaneke yo nokutya okwa li a ninga eindilo, opo a mone opaasa yokutalela po mOwambo, nde eindilo laye ola anywa. "Eshi enghava vali limwe natango kongeleka yaAnglikana," osho a tonga.

Etalelopo la tya ngaha mOwambo, okwa li oshinima sha fimana komushamane Morrow ongomutwe wongeleka, unene tuu pefimbo eli eshi Epangelo la ninga etokolo lokweehenifako ovanhu va dje pongaba yopokati kOwambo naAngola.

"Hangeleka yaAnglikana aike ya kumwa koshinima eshi, ndele neengeleka yo dimwe dihapu nomaumbo," osho omufita Morrow a twikila.

Ambrosius Amutenya pOkatana, Maria (nale Amakali ngashingeyi) Hamhata, ndishi ou mu shi ngaa Tatekulu, ndohotola T. Ihuhwa, ndishi pomweelo gwe ou shi po mOnandjokwe. Naku tu monitha kutya nani kuuyuni ohaku ningwa iituthi yegandjo lyoograde oFrans Ihuhwa, opo ngaa e li pOndangwa. Matti Amadhila mu tsa kuAmerika e li ko ta gwe-dha ko oonkwawo a ka yambulepo Elok. Ndhoka odho oonkatu tandi popi ndho.

Tse mbaka twa li aayenda moshituthi shoka, otwa yakulwa nawa megumbo ndyoka enene lyameme Terssa Letoabo, pamwe nooyene yoshituthi. Otwa yakulwa nawa unene palutu nopamwenyo wo.

Tsikila eilongo lyoye ino suunye noyoye oko yi li. Tse naNakadhilu otatu kambadhala ashike tu ka tale ko dhetu.
Ndapanda Shiimbi

OMUMVO GWAAKIINTU 1975

Omumvo gwaakiintu gwa hulu inandi ya moohapu ndhoka dha kala kondungu yelaka lyandje. Onda dhiladhila okupopya sha kashona komalongo-gekidho getu giituthi yoohango. Shoshene oshituthi shohango osha kala oshinima shaakuluntu.

Aakuluntu oyo taa fukike. Unene oohe nooyina naakwanezimo lyomukadhona ohaa ipyakidhile, okugandja iilya nokutsela oongombe. Mboka aayamba ohashi imonikila, ihe oohepele ohaa ningi ngaa mpoka pu na omuthika gwawo. Ngele tatu tala nee iituthi yethimbo ndika. Oshinima osha pilulwa nayi. Aagundjuka ayehe ohaa ikwatele ko okulongekidha iituthi yawo.

Nomaliko ogendji otaga pwile moohango. Otashi pula iimaliwa oyindji ooRanda dhomathele nomayuvi mokulanda oonguwo niikulya yohango. Konyala iimaliwa ayihe ohayi pwile mohango ndjoka yi li ashike esiku limwe.

Uunene aamati pethimbo ndika ohaa pulwa ya lande oofeyi, iikoloni niyata nomawiiwili gondilo. Aantu yalwe wo oya zaleka iinkumbi nuunkumbigona. Ohango oya ningi ashike etheater. Iikulya oya telekwa mbyoka yondilo, omakende oga landwa okuza konamunate sigo okanashikolondondo, iimaliwa kayi shi kuyalulwa. Aagundjuka otamu lalakanene owala esimano ne inamu tala oluhepo lweni. Shoka tashi tumbike omuntu kashi shi oshituthi shohango, ihe oshoka ngoye mwehe u li na mpoka to ka kala. Nonando kutitha aantu yomayuvi ngoye waa na sho to ka lya megumbo lyoye mwene kashi na oshilonga. Iimaliwa ayihe hayi longithwa moohango andola yi longithwe mokutunga omagumbo andola omagumbo giipeleki nogombasikena dhosamende oge thike peni moshilongo muka? Ihe ngashingeyi iikulya oya telekwa omakende oga nuwa, oonguwo odha zalwa, omuntu ke na mbete, shitaafula shaapo, mbyoka ya longithwa mohango oya ka hehelelwe, egumbo lyaapo na ndika ngaa ne lyiihwalinenge lyoondunda dhomwiidhi, shiyaha nolusindo ihayi popiwa, kumbatha lyemwene ngiika okuna, ihe lyaayenda wo tuu ye ya megumbo kali po.

Onda li nda tala nale nomukalo gwi ili oshinima shika shiituthi yoohango kutya, sho ohango ya pula ondilo ngeyi otashi ti wo kutya, ondjokana otayi taliika wo oshinima shondilo, ihe aawe hasho. Shika okuhepitha ashike nokwiithana oluhepo lu ye mbala. Aamati oyendji oya fadhukapo nokuli mbala konima yohango ya yi kUushimba, oshoka ayihe ya pu po, nongele a zi po mbalambala ngaaka nana uudhigu wa tameke nokuli nale mondjokana.

OIVIKEMBIBELI MOSHITAYINGELEKA SHUUKWANYAMA

"Ndele kala u shi shi momafiku axuuni-nwa otape keya omafimbo madjuu"
2Tim. 3:1-5.

Etumbulo eli olo kwa li tali dingonoka moivikembibli yetu oyo twa li nayo mo-maongalo ombingauninginino yaUkwanyama. Ovaitaveli vomomaongalo oo twa talela po ova li va ongala nelitulemo okupwilikina ondjovo yOmwene wavo, nodjuulufi inene oyo ya pendulwa ketumbulo olo li li pombada "NDELE KALA U SHISHI".....Eshi osha li sha hafifa unene ovakriste okukala momudimbi wonda-ka yOmwene.

Omaongalo aa twa talela po noivikembibeli otaa shikula apa:

Okalongo	Onheleiwa
Onambunga	Ongenga
Olupandu	Endola
nEngela.	
Ongwediva	Ohalushu

Ovaitaveli vomomaongalo aa ova kala va xokwa eenhundafana dopauhakumwenyo, sho eshi osho naanaa tashi pumbiwa monghalomwenyo yomukriste.

Penya pOngwediva, twa talela po eumbo lomuwilikingeleka tatekulu Dumeni omo yo twa kundwa kovaneumbo laye nomaimbilo a hafifa unene. Otwa dile po twa wedelwa eenghono molweendo letu. Oivikembibeli ei oya pendula ovakriste vahapu, osho yo vahapu tuu ovo ihaava mono omhito peendjovo daKalunga. Ndele eshi natu kale tu shi shi shili efimbo ola fika Kristus ote uya diva ita kala ko Hebr.10:37.

"Omona womunhu nge te uya ota hange ko tuu eitavelo kombada yedu"? Luk. 18:8.

Olweendo eli ola ningwa komweevangeliste Filippus Nakanwe osho yo Ev. Diak. Silas Shalanda, ovo kwa li va pewa oshisho eshi koshongalele shoshitayingeleka sha li mEenhana neudo muJuli.

Ev. F. Nakanwe

Ishewe kombinga yaakadhona ngele otamu pula iinima oyindji noyondilo omolwohango, sha fa owala okwiilanditha po komulumentu. Oto ka kala tuu u na uuthemba mondjokana ngaashi aakiintu oyendji ye tu pula momumvo nguka gwawo? Onda mono ishewe nokombinga yegongalo, omukadhona ita gandja iigandjwa yegongalo omumvo ngoka ta hokanwa, omumati oye te mu futile uukwanegongalo we, ota gandja iigandjwa yomukadhona, niimaliwa yiipeleki ye. Olwindji osha ningwa wo omumati a fute iipeleki niigandjwa yoshinkumbi shomukadhona wo nenge nokuli noyoohemweno nooyinamweno. Ngele muukwanegongalo weni otamu u pewa komulumentu nena oto kala u na uuthemba mu shike? Omukadhona omukwetu, kala u na uukodhi neliko lyomumati gwoye nolyoye mwene oshoka otamu li pumbwa komeho megumbo. Okulya okukulu, nokunwa oshowo, ihe ondjokana negumbo lyoye oyo oshinima oshipe tashi ku pulwa.

Oshituthi shohango kashi shi okulya nokunwa nokuzala, ihe etameko lyondjokana megumbo.
Festus Ashipala

OSHITUTHI SHOSKOLA YOSOONDAHA SHONGELEKA AYIHE MONGWEDIVA

Oshituthi osha li sha gongala mewiliko lya-meme H. Mpingana Tshilongo, omuwiliki gwo-skola yOsoondaha mOwambo. Opamwe nUu-shona ta lopota kuDengeinge a longe oshilonga she.

Etumbulo lyoshigongi olya ndyoka lyomumvo gwonuumvo "Ohole onene yi vule ayihe mbika." ihe mbaka oya lundulula kashona taa ti: "Jesus okuhole aanona", no taa shi holola wo neimbilo Jesus oye e hole ndje..... ndyoka ya kala nokwiimba konima yoshipopiwa kehe. Omagongalo agehe gomOwambo oga li ga tegelelwa okutuma aakelelipo yago 12 aanona naawiliki 2. Shika oshe eta omwaalu gwaakwa-shigongi ayehe, aanona naawiliki 743.

Tate Imalwa okwe eta oshipopiwa shoka tashi ti: "likolitha otayi yono po aanona". Okwe shi thindile nawa momadhiladhilo gaanona sho ta ti: "Ngele mondombe moka ho teke omeya gayo oga tameke okukola aantu, ondombe ndjoka nayi ethiwe po omeya gayo inaga longitwa nando okulye". Aanona oya li ya pulakene nohokwe, nondi shi shi oya zi po nomatokolo omanene okukondjitha okwaalongitha iikolitha Oshituthi osha li sha talelwa po komumbisofi gwongeleka dr. L. Auala. Okwa kumike omutanda gwe nohole yakehe nehawamo muukriste. Okwa kuthile mo omutanda mondjato Joh.5: 1-15. Okwa yelithile nawa aanona, kutya Jesus Kristus nguka kuume kaanona, Oye edhiya lya-Betesda. Omunona kehe u na uuvu ngele okakwenyene ngele epulu nuuvu kehe, e to yi ku-Jesus, oto aludhwa ongashi aavu ayehe mbe-ya ya yi le medhiya lyaBetesda omeya sho ga nyenganyengithwa ya aluka kuuvu wawo.

Omwa holoka wo omuyenda a zi kombanda yomafuta omumbisofi Kansanaho OmuSoomi. Okwa hokololele aanona kombinga yaanona yokuSoomi, nkene wo haa mono oompito dhokukala miigongi ngashi yo. Okwa thikitha omakundo gaanona nokwe ya kumike ya dhiginine mekondjo lyawo.

Moshituthi shika aanona oya kala nokuholola iitalemunti yawo ngashi taa vulu. Omauvitho moondjimbo ngoka taga shambula notaga tungu aapulakeni, oga li gu udha eke. Omahokololo, iinkumbi yoondjimbo oto hala u tye namu u hale tamu shunununwa. Tate M. Endjala okwa shambula wo aanona moku ya longa okwiimba pashiAfrika (nomainyengo ngashi sha pumbiwa). Aanona oya li wo ya nyola ekonakono mbimbeli pamagongalo. Moka omakondombolo ga li taga li ehete molwesindano. Ekondombolo ndyoka lya tidha omakwawo olyo:

1. Onangalo niitsa 92%
2. Okalongo niitsa 90% nomakwawo ga landula. Okwa li wo ku na okweetelelwa kegongalo kehe R 15 omolwetumo.

Nyenti iha dhininwa peumba lye, onkee Angwediva oya gandja shi vulithe ngeyi:

1. Ongwediva ya gandja R 78-00
2. Omundaungilo " " " " R 37-20
3. Okalongo " " " " R 36-60
4. Endola " " " " R 34-00
5. Olukonda " " " " R 30-00

Oshitayingeleka shoka sha li dhingi:

1. Oukwanyama R 425,15
 2. Uuninginino R 227,00
 3. Ondonga R 227,00
- Kumwe R 908,97

Osha li sho opalelela okutala aanona taa nyanyukilwathana nookuume yaampaka naampeyaka.

Aanona ngele taa kala nokudhiginina ngeyi, oshigwana otashi kala sha fa omusamane e na epya lye li na ompagona yiilyaalyaka noyomahangu ya hapa nawa, hayi mono omvula ya gwana naamati ye ta dhiginine, nopwaa na o-malimbilo okwa tegelela eteyo ewanawa tali nyanyudha. Osho omutanda gwOskola yOsoondaha nda hala gu kale ngompagona ndjika.

**Uilika-Ndamono Ndjimba
Ongwediva**



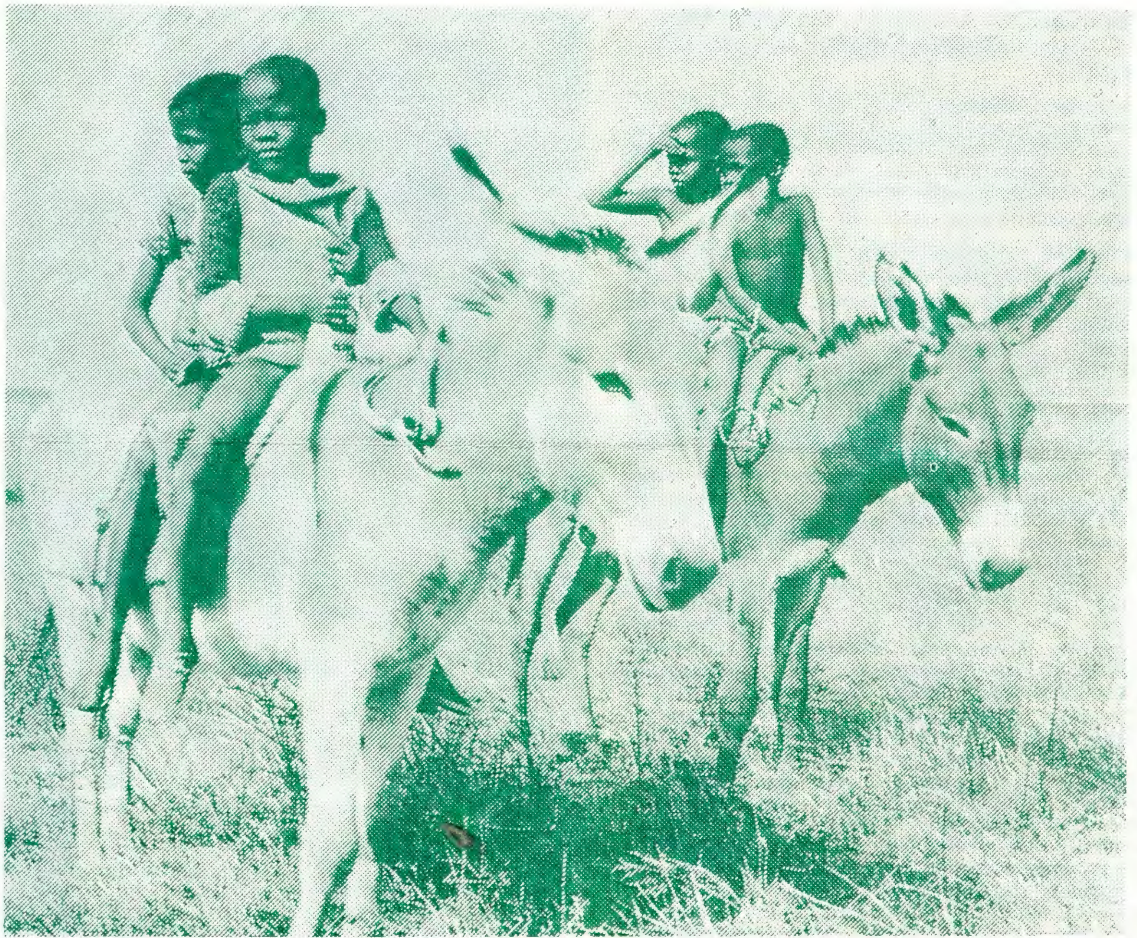
U. Ndamono Ndjimba

ITATU KA TALA KO DHETU

Osho twa galukile ko koshituthi oshinenene, shoka sha li ku GA-RA NKUWA kuPertoria eti 3/5/75. Oshituthi shika osha li shegandjo lyoonkatu dheilongo (degree) moka mwa gandjwa onkatu kaailongi yethike pomathele gaali nomilongo heyali, mwaa mboka mwa li Omuwambo gumwe awike, tate Frans Ihuhwa, ngoka a pewa onkatu B.A.

Esiku ndyoka osho nda mono aasamane yomitse omitokele taa taamba onkatulongo dhawo, nda ti: naakulukadhi yo yeyene nomagumbo gawo koothingo, oya mono onkatu dhomailongo gawo. Nani haagundjuka ayeke taa mono oompito dhomailongo. "Ano ngoye ou li tuu peni?" Onda li nda kumwa unene sho nani eilongo kali na ngele omunyasha nenge omukuluntu, ota vulu ashike okuhuma komeholela meilongo. Nda ti! itatu ka tala ko dhetu nando okonima yoomvula ndatu, nando opEngela ano mpa pu na ndji yokuteleka!

Oonkatu dhomailongo ohadhi gandjwa dhomaludhi gi ili nogi ili. Ngele oto limbililwa, pula ano tate Daniel Namuhuja, pOniipa, ngoye ino pitilila po



EGUMBO LYATATE TIRRONEN LYA GALUKILE MIILONGAYA- KULO MU ELOK

Omusamane Toivo Tirronen ngoka a kala ethimbo ele omukuluntu moskola yopombanda mOshigambo, okwa galukile ishewe kOwambo moshilongayakulo she mu Elok. Oyo ayehe neefolo lye Ester Tirronen. Ngashi Aawambo oyendji ye mu tseyana nawa, omusamane ngoka he ende ta nyanya a ka yakule oshigwana shAawambo, palufo nduka itaka kala we kOshigambo, ihe ote ke shi kala kuElim, hoka ta kala moshilonga shiinyolwa yuukriste.

EKUNDO

Tse nameme, efolo, otatu kundu ngeyi aaleshi ookuume ketu ayehe, sho twa galuka kefudho kuSoomi 21.11.75. Owambo otwe yi thigilepo 2 Januari nuumvo tu uka kOkapa, moka twa yi mosikepa. Osikepa, onenenene oye ende konyala iwiike iyali, manga inaayi thika kulngiland. Okuza kulngiland oku na omasiku gaali nomausiku gaali, manga inoo thika kuSoomi to ende mosikepa, meshina lyolutenda.

Sheeli shetu Tauno negumbo lye, oye tu taamba nenyanyu enene. Oshitenya shetu twe shi mono lwotango, osho wo okatekulu ketu Vesa Tapio. Tashi ti, moshituthihango shawo inatu kala mo, nando otse aavali!

Pethimbo lyefudho Kalunga okwe tu longekidhile uuwanawa auhe tatu vulu oku u dhiladhila. Okumonathana naanezimo, okuuva nokutala othinge yo opala

lela, okuya kondjenda onde kuLaplanta nokuumbangalantu waNoole, okumakela iikulya yOshisoomi niyimati ayihe iitoye. okupulakena uudhigu wetu wopothinge nkene tau sheketa nawa, okunika koonkala twe dhi igilila okuza kuunona wetu, okwiiyoga momatale ge na omeya ogendji nokuya wo kiituthi iwanawa yoohapu dhaKalunga, ngaashi oshituthi shimwe moka mwa li aantu omayuvi omilongo ndatu. O, uuwanawa waKalunga owe tu thindikile ethimbo alihe, nokuli mushika kutya otwa talelwa po wo kAawambo mboka ya yile kuSoomi. Otwa monathana wo naamboka taa ilongo hwiwaka ngaashi ooShivute noolthete.

Omakundo otaga zi kuyo, omuwilikitumi newilikongundu alihe lyetumo, aatumwa yonale yomOwambo naakriste mboka taa longele etumo. Onda pewa ompito okutalela po iigongi yookuume ketumo megongalo lyaandjetu; uudhiginini wawo otawo kumitha. Otwa ningilwa wo oshituthilaleko oshiwana, moka mwa li aasitagongalo yaheyali, yaali yomuyo aatumwa yonale yaamuka, Hatakka naLöyty. Taambeni wo omakundo gawo.

Nando twa li mondjila omwedhi aguhe okushuna kuSoomi, okugaluka kwetu omepathimo limwe alike. Ondhila oye tu enditha mootundi 19 1/2 okuza kokapale kaHelsinki sigo okapale kaVenduka. Mondhila yimwe otwe ya nomukuluntu gwOshinyanyangidho Moses Amkongo, ooHolopainen nofeelani yaali, Anneli Hirvonen naHelka Honkanen, tu tsikile ilonga yetu mu ELOK. Eps. 103:1-6.

Ester naToivo Tirronen

OSHIHAUTO TASHI LANDITHWA PO

Oshihauto Valiant Safari shomodela 1973, otashi landithwa po kondando R2,100-00. Oshihauto shoka otashi monika pongalasho yOngeleka ya Elok pOniipa.

Kwa li-uusiku omuuyuni. Ayeheyehe yomuuyuni Ya puka noya loloka. Omuwa a ti: "Ngaye nda hala Uuyelege nuu ze ko mbala Nuuyelege wa holoka. Twa mon' uuyelege Tuu minikilile Mevi ndika. Tu nyanyukwe, Tu imbile Kalunga komuuyelege.

Jesus Kristus Oye nguka Kwe ya uuyelege tuu mbuka, Uusiku nowa hulu po. Jesus a ti Ndi nombili, Ongam' uuyelege washili. Ongay' ondjila mwenyo wo. Otse atuheni tu mu simanekeni, Tse tu tseye Ehalo lye, Tu mu landule, Tu ende tu nuuyelege.

AATALELIPO

Okangundu haka okaasamane naakulukadhi yegongalo Elombe.

Okwa li ya talele po Ombelewangeleka, mombelewa yoshitayingeleka. Okuza kombelewa oya thikile wo mOshinyanyangidho sha Elok noya talele po miilonga nombelewa yOmukwetu.

Gumwe gwawo, meme Viktoria Epafra, oshilyo shokomitee yoskola yopomukunda gwawo likokola. Moshilonga shoka, pahokololo lye mwene, okwa hogololelwa mo okuza komumvo 1959 nomo e li sigo onena moshimpwiyu shoka.

"Oshimpwiyu shokomitee okutala oskola yi mone aalongi ya gwana noongulu dhokulongelwa. Poskola pu kale elandulathano, osho meme Viktoria a ti. Okwa tsikile ta ti, poskola yawo likokola oye na ompumbwe yaalongi yoongundu dhopombanda. Oongundu oye na okuza kosubu A sigo ostanda ontintano. Sho ya pulwa kutya otaa tile ngiini egongalo lyawo epe, Elombe, ndyoka opo lya dhikwa mesiku lyotango Juli 1975, oya ti kaye na sha manga shokupopiwa kombinga yegongalo ndyoka.

CLIVE COWLEY TAKA YA KOMBANDA YOMAFUTA

Omutoolinkundana gwomOvenduka a tseyika nawa, omusamane Clive Cowley, mombelewa yoshifo "The Star", okwa tseyitha omasiku ngaka ta ti:

Omalongekidho ngele oge ende nawa mombelewa yetu muJohannesburg, otandi ka ya mbala kombanda yomafuta okutalela po momavi ngashi: Switzerland, West-Germany, Sweden, Finland naAmerika lyokOlundume.

Elalakano lyolweendo nduka olya kwatelela mo iinima itatu.

a) Okukonga ompito yokukonakona oo-veta momavi ngoka miinima yi ili noyi ili.

b) Okupulakena omadhiladhilo gaantu yomomavi ngoka, nayalwe muuyuni, nkene taga tala uupolitika waNamibia. Otaka thika wo aniwa ko V.V.O.

c) Okutsakanena niilyo yaSwapo mbyoka yi li pondje yaNamibia nokupulakena omadhiladhilo gawo kombinga yopolitika yevi ndika.

NYANYUKWA OMUNA GWASIONI,
LIGOLA SHILI JERUSALEM,
KUNGOYE TE YA OMUKWANIILWA
NGO,
EE OYE TE YA OMUNAMBILI NGO,
NYANYUKWA OMUNA GWASIONI,
LIGOLA SHILI JERUSALEM

KONGOLO KWA SHI. OWI INYOLITHA
TUU OMUKWETU OMOLWOMUMVO
1976? OTAGU GU R2-00 OMUMVO
AGUHE. ONTETEKELI IHAYI NU MEYA
GANONO.



Ongundu yaatalelipo aakwanegongalo epe Elombe, mboka ya talele po oshinyanyangidho. Oya halele aaleshi Okrimesa ya yambekwa

AMKONGO A GALUKA KOMBANDA YOMAFUTA

Omuwiliki gwOshinyanyangidho sha Elok, omusamane Moses Amkongo, okwa galuka mondjenda yetalelopo lye kombanda yomafuta. Omukwetu, oshe mu kundu nomapulo gamwe ngashi nga:

Omukwetu: Tate Amkongo, otwe shi dhimbulula nokutya oomwedhi ndhika dhopehulilo lyomumvo ino dhi kala mpaka miilonga, owa li ano wa talele po peni noshe ku pula ethimbo li thike peni naanaa?

Amkongo: Eeno, omwa dhimbulula mondjila, okuza pehulilo lyaAguste okwa li nda thigi po iilonga yetu mpaka opo ndi ka talele po muEuropa. Omushi-ndi gwiipilangi sho nde gu kakanya mOvenduka eti 29-8-75, ogwa ka ndwangula ndje muGeneva, Switzerland. Komeho onda tsikile olweendo lwandje nomashina gokolutenda sigo omuNdownishilanda, oshilongo shoonepando lyiyela ya tya oohamala pomake. Osho nda tsikile natango nolweendo lwomombepo nonda ka mbwata muSwede, muSoomi nomulngilanda. Ngika omwa hala okuteta ndje melaka nokupula sho kwa li tandi kongo momavi agehe nde ga tumbula. Tala, olweendo lwandje nduno olwa shewa owina ndi lu ninge talu taaguluka omavi ngoka. Elalakano lyalwo oyo okutalela po miinyanyangidho yi ili noyi ili iinene niishona noofabulika nee moka hamu hambulwa omashina gokunyanyangidha.

Omashina tu gana, gamwe oga hambulwa muSwitzerland, omupepo ngoka onde gu talele po wo, opo ndi likole oowino nde dhi pumbwa mOshinyanyangidho shetu, moka tu na eshina lya za hoka. Mundowishilanda onda talele po ofabulika moka hamu hambulwa omashina ngashi ngaka tu na mOshinyanyangidho shetu, Heidelberg Cylinder na Platen. Onda talele iikumitha, sho itenda tayi hambulwa sigo ya tsikinikwa kumwe neshina tali holoka.

Hwiyaaka ohaa ningi ookersesa tadhini ngashi ngoka ya za kiilongo niilongo noya hala okuninga aanyanyangidhi; ngame ka nda li nethimbo lyagwana. Osho ano nde ende te talele po ngaaka momavi nde ga tumbula sigo ethimbo lyandje lyoomwedhi 2 1/2 lya pu ko nonda galukile nduno koshilongo.

Omukwetu: Ompumbwe yetalelopo ndika oya zi uunake noya penduthwa koshike?

Amkongo: Ompumbwe yo yene ngashi nda adhika nda tumbula nale, oya zi nale okuza ngaa uuna nda tameke iilonga mOshinyanyangidho, tashi ti opwa pita oomvula 9 ngashingeyi. Oshinima osho owala sha kala inaashi monenwa olweedhe, ando pamwe olweendo olwa ningwa nale nokuli.

Ondi na owala okupandula Epangelongeleka sho nani nando u wete lye ku uvanekela sha, nando pu pite omimvo odhindji ngiini, ino tya lya dhimbwa, aawe. Nando napa pite omimvo omugoyi, nani oshinima onkene shi na omwenyo momutse gwEpangelongeleka. Tangi Epangelongeleka lya simana sho hali dhiginine omauvaneko galyo nohali ga tsakanitha.

Shoka sha pendutha ompumbwe ndjika ngame mwene kandi shi oku shi fatulula nawanawa, ihe naku-tuma ndje nonaku pa ndje ompito ndjika oku na owino musho e vule ndje. Shoka nde shi ndhindhi-like molweendo osho shoka kutya onda mono iinyanyangidho oyindji tayi loggo komikalo dhi ili nodhi ili. Iilongitho yi li mo oyo mbyoka yethimbo lyongashingeyi, onkene kandi vulu ndi ku thanekele kutya oya fa shika nenge shiyaka.

Ngame mwene onde yi tala ngaa nomeho guutala-mbambi. Onda koneke nduno pamukalo nguka kutya iilongitho mbyoka tse tu yi na mOshinyanyangidho sha Elok, oyo oyethimbo lyookuku moku yi yeleka naambyoka nda mono miinyanyangidho nde yi talele po.

Ihe uuwanawa wiilongitho yetu ou li owala mpoka shoka nando oyethimbo nee ndyono paku yi yeleka naambyaka yoshinanena; omashina gaOffset, electronics nosho process works.

Oshiwanaawa okutala iilongitho yi li kombanda yoyaa-ndjeni, opo komeho u vule okulonga nokutala ngele to yi adha wo nenge to yi dhiladhila uuna lumwe u yi ikongele. Osha li oshiwanaawa okutala oshinima me-pandja enene lya pandjwa pondje yongulu shi vulithe oku yi tala mokapandja okashona meni lyongulu.

Omukwetu: Ethimbo sho efupifupi wa li wa kala, owa mono tuu eyamukulo komumpumbwe dho?

Amkongo: Ngashi ethimbo lya li efupi nandi yamukule epulo lyeni wo pafupi, kutya, shoka nde shi tala, onde shitala ngashi shi li nonda pandula, ihe

ndishi 'ya lyata mo oya nwa ngaa.'

Omukwetu: linyanyangidho mbyoka wa talele po, nando tu shi shi kutya ehumokomeho ndiyaka enene lya ya pombanda, owa tsuwa mo tuu omukumo, okuyeleka noonkambadhala ndhoka tatu ningi mpaka? **Amkongo:** Eeno, osho shili kutya iinyanyangidho nde yi talele po oyi na ehumokomeho li li mookathele, niilongitho yopautomatika yo iiwanawa, shoka oyo-shinanena lela, hayi endebele noya kutha po omahala ogendji gaantu.

Aantu oyendji momavi ngoka nda talele po, oye na oluhepo lwiilonga, omolwomashina ngoka ga kutha po iilonga yaantu. Ihe ngame onda tsuwa omukumo nguno, kutya shono hatu shi longo mpano, nando onomashina gethimbo lyonale nohatu vulu okulonga iilonga oyindji nomake, katu li nando pombambo. Itatu ningi nando oonkambadhala, nando ne tamu shi luku oonkambadhala.

Eyooloko oli li owala miilongitho mbyoka tu yi na nomumbyoka twaa yi na manga mpaka, yo yi niwe kumbeyaka, ihe pailonga otu li momusinda gwaanyanyangidhi ayehe muuyuni.

Omukwetu: Ethimbo alihe ndika lya piti owa kala waawe na naanaa omupeha gwothaatha molwashaoka iinima inayi enda we ngashi ya li ya thanekwa. Mbela pethimbo lyokuzapo kwoye mpano omwa li mwa pata manga iilonga nenge omwa piti nomukalo guni?

Amkongo: Epulo ndika onde li pulwa wo olwindji molweendo ndwiyaka, ihe pamwe nandi yamukule ngaa ngashi nda adhika nda pe aapuli mbeyaka eyamukulo tuu ndyoka.

Tse oonakulonga moshitayilonga sha Elok, mOshinyanyangidho, otu shi okupandula Kalunga, ngoka a gandja omadhiladhilo omawanawa go gahe shi guundalapata nenge gonyanya kumboka kwa li ya wilike oshilonga shika okuza ketameko lyasho. Aawiliki mbeyaka oya topola nawa oowino dhawo maanashilonga mboka kwa li ta longo nayo. Okalonga kehe oka inekelelwa gumwe gwomaaniilonga.

Aawiliki mbeyaka otatu ya pandula wo sho inaaya ngungunina oondunge dhawo, ihe oye dhi tu pe no-po twa zi hatu vulu okwiyendela miilonga mbika, kakele kiinima yimwe, shoka omuntu iho ihupo thilu.



M. Amkongo

Ano pokuza po kwandje kapwa li nando ompumbwe yokupata omiyelo dhondjugo yiilonga, aawe. Aanashilonga mboka ya kala po oya vulu okutsikila niilonga taa iwilike yo taa wilikathana. Nokuli manga ndi li pokuza po, okwa li ya hogolola gumwe mokati kawo oye e ya thikamene po manga peha lyomuwiliki. Mbaka otaa longo ye li miinima yawo, yi igililathana nawa niilonga nohangashi aapitipo nenge aatalelipo yowala moshilonga shika. Onda ya pandulile unene shono ye shi ningi pethimbo nda li ndahe po. Onda pandula ishewe aanashilonga ooyakwetu yomuushiinda, ongalashe nombelewangeleka sho ya gandja ekwatho kOshinyanyangidho uuna ya pulwa. Onda hala ya tsikile ngaaka nokomeho nomukuma. Kalunga ne mu yambeke aanashilonga aakwetu amuhe mitayilonga ya Elok.

Kombinga yomupeha gwothaatha mwe mu tumbula nangoka kee shi gwothaatha ke po, onkene ethimbo kehe onda tala kondjila pamwe taku tsi mi ngaa.

Omukwetu: Oshinyanyangidho shetu osha thikama ngashingeyi unene kekwatho ndyoka lya zi kondjila muuyuni. Molweendo lwoye owa tsakanene nayamwe yomaagandji, oshike shono kwa li ya hela okuwa kungoye?

Amkongo: Tango onda piti moombelewa dhOngongahangano yAakwaLuther muGeneva. Onda taambwa mombelewa yoshikondo sheyakulo mehumithokomeho lyoshigwana (CDS) kuamushanga nomupehawiliki, meme Christa Held kumwe naAmushanga gwe meme Anita Bartos.

Onda kundwa wo komuwiliki omukuluntu gwoshikondo shoka. Okwa pula unene, shoka hatu nyanyangidha, otu na omashina ga tya ngiini, aalongi mo yangapi, olye nda thigi pehala lyandje. Aagandji yimawiliwa yetungululo, otaa dhimbulukwa natango pwa li ompumbwe yuutayistola womambo. Otaa pula uustola ngele owa pwa okutungwa nomambo ngele ohaga longithwa tuu moshigwana.

Okwa li nda ningi ehokololo alihe nehokololo ndika olya tuminwa koombelewa adhihe nkoka kwa zile ongalo yOshinyanyangidho nokupitila moombelewa dhOngongahangano yAakwaLuther.

Onda talele po (Brot für die Welt) omboloto yuuyuni, ombelewa ndjika oyi li muStuttgart, Ndowishilanda. Nda kundwa mo komusamane Von Tzaan naAmushanga gwe, meme Haag, nosho tuu aanambelewa yalwe.

Okwa li ye na omapulo goludhi tuu ndoka nda pulwa muGeneva. MuSwede onda talele po ombelewa hayi lukwa Lutherhjälpen (ekwatho lyaLuther) muStockholm nosho tuu ongeleka yaSwede muUppsala. Ayehe mboka oyo aagandji ya simana noyo ayeke nda monene ompito yokutalela po nokweendulula ehokololo lyandje lyiilonga yOshinyanyangidho.

Osho nda tsikile mokweendulula ehokololo ndyoka nomuSoomi pomahala gi ili nogi ili ngashi ombelewa yaKotimaa moka twa kundathana nomusamane Reino Hassinen. Mulngilanda omo amuke inaandi tsakanana nomapulo taga neke Oshinyanyangidho nkene tashi longo, shila oombika yikwamashina owala ya pulwa. Okwa li wo nda pulwa andoja ndi thike kuAmsterdam Holland, ihe ethimbo olya ti etelela liilwa.

Onda koneke nawa moonkundathana nkene Oshinyanyangidho shetu shi li momadhiladhilo gopainternational.

Omukwetu: Ethimbo sho lya li po ngiika efupi unene kungoye metalelopo ndyoka, owa penduthilwa ishewe ompumbwe ompe yokuninga olweendo olukwawo, nenge owa tala osha gwana manga shono wi ilongo methimbo ndyoka?

Amkongo: Shoka ompito nethimbo kanda li nde yi ipe mwene, ondi shi okupandula natango mpaka Epangelongeleka ndyoka li li omugandji nomulongekidhi gwompito ndjika nda mwene hashu nduno ngele ethimbo efupi. Kombinga onkwawo nandi tye molweendo nduka onda mono mo ehongololo, lya lyaah shi ndyoka lyopandeeweli. Ndika lyandje oyo owala enota lyokumona andola owino oyindji yopashilonga shandje, andola okwa li nee inima yomoondjato hayi fukulwa mombongo ya fa omawo. Ihe ngele lya simana onali egulula ishewe osheelo ngashi shino, O, kil shi mono nokuli!

Omukwetu: Ompumbwe to yi tala onene miilonga mbyoka to wilike mpaka, oyaanashilonga nenge oyomashina nenge oyi li miinima yilwe? Nongele opu na ompumbwe yasha, ekwatho olyashike to li tegelele kaaleshi yoshifo?



Omusamane Tomas Ihuhwa, 40, ngoka a kala omuyakuli naAmushangagona gwOmukwetu mOshinyanyangidho 1972-1975. Okwa adhikile oyo a hulitha eilongo lye kOshigambo, nkoka kwa li a landula ofoorm I-II momimvo 1971-1972. Epangelongeleka lya Elok, olye mu zimine, oyo okuza muFebuluali 1976 a tsikile eilongo lye mOseminali yUuteologi mOtjimbingwe.

Omukwetu nosho wo tse aalongi pamwe naye, otatu mu pandulile eyambo lye moshilonga shika notatu mu halele ompolo neilongo te ke li tsikila nokupepe oondunge dha za kombanda kuNgoka ha gandjele ayehe oondunge nuunongo ye ke na uutende.

Amkongo: Epulo ndino edhigu lya olya kwiinathana unene. Oompumbwe odhi li po odhindji. Kwa tya ngaa omupeha ngwiya mwa tumbulile katu mu na po mpano, aanashilonga yoombelewa inatu gwanitha, onkene twa tala kondjila.

Kombinga yikwamashina onkene tu li mokugongela okashina kontumba nokongandi. Iilongitho yilwe ngashi iikwandanda otatu yi pumbwa natango. Mumbyoka nda dhimbulula tatu yi pumbwa ishewe oyo ngashi eshina andola ewanawa lyomafano.

Andola tu hale oku li landa, nena otashi eta natango epulo ekwawo lyenenepeko lyetungo. Oshoka ngoka nda mono nonda tala taga opalele oshilonga shetu mpaka, otaga pumbwa oshitopolwa shetungo ge shi sheyelwa.

Kaaleshi otandi dhimbulutha owala etseyitho ekulu ndyono tali ti: Ngele ku na omuleshi ngoka e na onzapo yaJuniolo nenge Matrika nenge omulongi e na Juniolo nonzapo yuulongi ye e na wo owino medhiginino lyomambo giiniwe noku na ehalo okulonga mombelewa, na ninge eindilo kOshinyanyangidho.

Aatumwa aakulu nda tsakanene nayo, ngaashi egumbo lyomuwilikitumi tatekulu A. Hukka, egumbo lyoohamäki, meme M. Väisälä, Inker Hartikainen naanona, egumbo lyatatekulu Björklund, ooVirtanen ayehe, omusamane Nduwanga(Airikala) kuku Kantele nakuku Hilma Ranttila, tatekulu A. Eirola negumbo lye nosho tuu yalwe oyendji ye mu shi naamboka haye mu dhiladhila, nando kaye mu shi koshipala, oye mu kundile po unene.

Aalongi Immanuel lithete nosho Tomas Shivute mboka ye li muSoomi nayo oye li nawa Taa ilongo nawa noye mu kundu unene.

EEHENIFEKO LOVANHU MOWAMBO OKUDJA PONGABA

Eehenokomesho liwa ola hangika paife mokuhalakanifa po ovanhu, oku va kufa pongaba yopokati kaAngola nomaduumbo okolundume laSuidwes, opo pe na okukala oshitukulwa shihe na mwene (niemandslan) shounene u fike peekilometa 5 fiyo 6, osho omushamane J. M. de Wet a tonga pashifo die Suidwes Afrika-ner sheti 18 Novomba 1975.

Okakomisi kowina kokukonakona, oka totwa po, kEvangelo lOwambo opo kakonakone natango eemhito dokweeheni-fa ko yo novanhu ovo ve li ponghulo neengaba ve li po ovakaleleli, osho omushamane a twikila nehokololo laye. Okakomisi otaka konakona oinima ngashi ondilo yetembu, oulinawa noilanduli (implikasies) i na sha netotololo leenhele dokukalwa kovatembulwa ovo.

Oshitukulwa osho shihe na mwene (niemandslan) otashi kala noumbwalangan-dja u fike lunga peekilometa 5-6, ndele peenhele dimwe tashi shikula yo onga-ba yopaushitwe.

Omushamane de Wet pashifo shinya okwa twikila vali ta ti: oiningwanima yopaife oyo ya etifa ngaha kutya ovakwanyama va ehena kepangelo lohilongo nova indila va ehenifwe ko ngaho meni lohilongo.

Otwa xuma komesho nawa mokuhalakanifa po oukamba ovo va li moshitukulwa sheengaba, ndele otashi ka kufa natango efimbo lonhumba, opo ovanhu ovo ve li ovakaleleli vahapu moshitukulwa osho va monenwe vali omitumba davo dokukalelela, oshifo sha ti.

Metwikilo omushamane okwa ulika yo opo, kutya ongaba yopaukumwe pokati komaduumbo okolundume laSuiwes noitukulwa ilwe nosho yo naAngola, oya hovela kOkaoko mouninginino nokuyuka koKavango, oshinano sheekilometa 1000. Hano tashi ti omaduumbo laKaoko no-Kavango oo aeke e na eengamba dopaushitwe pokati kao naAngola - Kavango nomulonga Kunene..

Ndele ongaba yopokati kOwambo naAngola oyo ashike oluumbo lodalate yongaho. Oshitukulwa eshi pokati kOwambo naAngola osho nee sha kala tashi eta omaupyakadi luhapu nomefimbo lapita, osho omushamane de Wet a tumbula metwikilo nehokololo laye. Oupyakadi ukwawo vali oyou eshi keembinga adishe dongaba ei, okwa kala ovanhu ovo ve na ovakwapata vavo kombinga ei yOwambo, moule aushe wongaba ngashi ya tavakana.

OKOFA OYANDJE!

Onda kanitha okofa, ya kuthwa pOndangwa moshihauto shomulumentu, omukwaluudhi, gwedhina Vilho Nashilongo. Oya kuthwa po komulumentu, Omukwanyama, gwopEngela, a li ta faalelwa kUushimba. Edhina lyomulumentu nandi li tseyaya. Otandi ku indile nduno neifupipiko tatekulu gwOmukwanyama, okofa ndjono yi fala kaatatekulu Gabriel Kautwima hu we yi falele nale, ngame mwene gwayo, ndi ke yi tale ko.

Omukanithi
Mev. Olivia Nashilongo
Pk. Uukwaluudhi

Omupapa omuluudhe, otashi vulika,

Esiku onali ke ya uuna nomuluudhe ta ningi omupapa. Ndika olyo etegame-no lya dr. Karl Rahner Omuaustralia. Omusamane Karl, a simana unene melongo lyuukalunga pangeleka yaKatolika kaRoma, okwe shi popi neitulomo, kutya sho pu na ngashingeyi aaluudhe taa indjipala mongundu yaamboka hamu zi omuwiliki gwOngeleka omuluudhe ta hogololwa a kale omutse gwOngeleka ndjoka. Dha toolwa moshifo oshinene shOngeleka muEuropa "The Universe".

Ngeenge ngeno muAngola mu dikwe epangelo li na omakanghameno, nena otashi ka kala oshinima shepangelo olo la-Angola, okudidilika nokudimbuluka, ndubi sha pumbiwa opo li kale nombili novashiinda shaye.

Mokufatulula komesho omushamane de Wet okwa tonga sha vali kombinga yovatalelipo (toeriste), e shi a tya, ngeno omhito yokutalelipo i yeuluke vali, nena omivelo otadi ka yeululwa yo momaduumbo, opo va dule okutaulula mokati keendjila domomaduumbo, okuhovela nokudilila kombinga yokoushimba, okupitila momaduumbo nokuya nee ngeno kuAngola, osheshi omaduumbo okwe lilongekidila elongelokumwe nepangelo la-Angola, la hanga omakanghameno a kola omolwomatohelo opaekonomi nookuhola ovanhu. Ngeenge ngeno epangelo laAngola li ke shi ulike, kutya lo ole lilongekida okulongelakumwe nokukalafana moushiinda muwa, nena itashi ka pumbiwa vali paka kale oshitukulwa sha tya ngaho shihe na mwene (niemandslan), osho omushamane a xulifa ehokololo laye olo a yandjela mOshakati, mOwambo.

OOMPANGU DHAYAHAMANO MOVENDUKA

Aantu yahamano, aalumentu yatatu naakiintu yatatu, oya holokele mompangulilo yaVenduka meti 1 Desemba 1975, koshipala shomupanguli, presidende Justice F. H. Badenhorst, pamwe naakwathi ye yaali, okutamanekelwa elopotelo tali ti oya taaguluka oveta yuukulo. Aatamanekwa mboka ayehe oyo iilyo yaSwapo.

Elopotelo lyaalumentu naakiintu mboka ayehe olyo ndyoka kutya aniwa oya pogola muSuidwes nomuAngola koo-veta nelandulathano. Moku shi ninga oya kambadhala okukwatha omuntu gumwe nenge aantu oyendji okutaaguluka ooveta ndhoka na oye shi ningi aniwa pamikalo ndhi:

1. (a) Aaron Muchimba okwa gandja R380 noradio komulumentu gwo-ntumba, ngoka palufo lwe e na okugandja iinima mbyoka kokangundu kaantu inaaya tseyika mboka ye na elalakano lyokuumbako epangelo koshipundi muSuidwes koonkondo.

(b) Okwa landa wo oshihauto, Landrover, oku shi gandja kokangundu tuu hoka ke na edhiladhilo okuumba ko epangelo koonkondo.

(c) Muchimba, pambapila yetamaneko, aniwa okwa kwathele ishewe okangundu nkeya iikumbyatha.

2. Omutamanekwa Andreas Nangolo naye wo okwa landa oshihauto, Landrover, e te shi gandja komulumentu gwedhina Usko Nambinga, ngoka palufo lwe ishewe e shi gandja kokangundu kaamboka ya hala okuumba ko epangelo muSuidwes koonkondo.

3. Hendrik Shikongo ota tamanekwa sho kwa li a londeke aniwa aalumentu yaali, inaaya tseyika nosho wo gumwe Nicodemus Mwahi, noku ya helula kOnamagongwa Store, nowino ndjoka kutya aantu mbeyaka oye na omadhiladhilo gokukwata po nenge okumoni-tha oshiponga ngoka kwa li nale oministeli

onkuluntu mepangelo lyOwambo, omukwaniilwa Filemon Elifas noya adha elalakano lyawo sho ye mu dhipaga.

4. Omutamanekwa Raura Nambinga okwa gandja R10 kokangundu heyaka, okwa talele po muAngola nelalakano okutsakanena nokangundu nkeya, okwa gandja omagano gohema yoshikiintu. oothewa nuunastuke komukadhona Kafaila, oshilyo shokangundu ke na elalakano lyokuumba ko epangelo muSuidwes koonkondo. Nambinga aniwa okwa kutha ishewe R10 kuOlivia Mbangula nelalakano oku yi pa okangundu ka dhiladhila okuumbako epangelo koonkondo.

5. Omutamanekwa Naimi Nambowa ota tamanekwa sho kwa li a gandja R10 kuUsko Nambinga, mbyoka Nambinga e na oku yi faalela okangundu nkeyaka komadhiladhilo gokuumba ko epangelo koshipundi, aniwa.

6. Omutamanekwa Anna Nghihondjwa, oku na elopotelo lyokutya naye wo okwa gandja R10 kuUsko Nambinga opo Nambinga e dhi gandje kokangundu nkoka ke na omadhiladhilo gokuumbako epangelo koshipundi, koonkondo Epangelo mompangu olya kalelwa po komupanguli omukuluntu omusamane J.E.Nöthling SC, nota kwathwa komupanguli omusamane Chris Jansen. Aatamanekwa oye lilwe po kuadvokaat Hans Berker, a uthwa kehangano Lorentz & Bone noku li po pehala lyaadvokaat David Soggot.

Oompangu otadhi ka tsikilwa natango esiku 16 lyaFebuluali momumvo tagu ya.

**Otandi ya wilike
ngele haa ende nokugalikana**



OFIKOLA YOVAPOFI NEEMBOLO, OMUPANDA, ENGELA

Etambulo lovanafikola vape mofikola yetu momudo 1976.

Ohatu katambula ovanafikola vape momudo tauuya ngeenge Kalunga eshi hala. Ovapofi neembolo ovo ve li momaumbo etu, poushiinda, momaongalo nomoshilongo shetu unene tuu okudja peedula 16 fiyo 25 lwaapo, ovakriste ile, ovapaani, vomongeleka keshe, mOwambo nOkavango, natu va kwafeni hano tu va fifileni etumwalaka eli, opo va kale va fika mEngela okudja 1 Febuluali /76.

Ava ve li ovakriste nava etelele oinima ei:
Ehokololo lovadali ile lomutumi waye
Epopilo lomufitaongalo pamwe nombapila yeongalo.

Ava ve li ovapaani nava etelele oinima ei:
Ehokololo lovadali ile lomutumi waye
Epopilo lamwene woshilongo.

OKUYAKULA OKU NA ELAO FIYO OMOUKWAALUSHE.

Omuyakuli
P. Ndjaula

AALESHI TAA PULWA

Shika ngiika otashi kala oshinima oshipe kune aaleshi yOmukwetu shokutsakaneka omapulo goludhi nduno, ngoka tage mu ukilile notaga pula omadhiladhilothaneko geni kombinga yoshifo Omukwetu. Ihe palwe muuyuni iifo oyi hole okuuva omadhiladhilo gaaleshi, nkene aaleshi haa tala nokudhiladhila oshifo shawo niinyolwa yasho. Okuholola shoka ya ndhindhilike sha pumba mo nenge shoka sha nika okathindolongela nokugandja nee omathaneko nomahalelo gawo kombinga yoshifo.

Aaleshi aasimanekwa, oshifo shika sheni, Omukwetu, otashi hedha ngeyi kune she mu humbatela omapulo gamwe komapandja gasho nomuleshi kehe ota indilwa nesimaneko a tume ngaa eyamukulo ndyoka a mono kepulo kehe, kombinga yOmukwetu. Onawa aaleshi aasimanekwa sho tamu shi ningi nemanguluko. Otwa tegame na omayamukulo geni ga thike kombelewa yOmukwetu manga eti 28/2/76 inaalipita.

Omapulo ogo ngaka:

1. Omukwetu niinyolwa ye ohe ku etele tuu sha mokuthika kwe koshipala shoye? Ngele, eeno, oshishike noto shi fatulula ngiini?

2. Miinyolwa yOmukwetu, oyini po ho lesa unene na omolwashike wa hokwa iinyolwa yoludhi ndono? Omolwashike iinyolwa mbiya yilwe ihoo yi hokwa?

3. Owa tegamene Omukwetu e ku etele iinyolwa yontumba, ndele ihe yi eta? Ngele osho, ongaashi iinyolwa yinipo andola?

4. Oto ti ngiini kolupe mono Omukwetu ha holoka ngashingeyi, uunene we, uuwindji womapandja, oonyolo nosho tuu? Ou na ethaneko lyasha mombinga ndjino, olini?

5. Oshike natango wa hala okutumbula kombinga yOmukwetu, aguhe, omudhidhi?

OMUKWETU

Oye oshifo shOngeleka onkwaevangeli paLuther yomOwambokavango. Ohashi nyanyangidhwa mOniipa. Omukuluntu gwoshifo omumbisofu dr. Leonard Awala.
Amushanga Rev. Sebulon Ekandjo

Ondando yoshifo komumvo muSuidwes nomu-Afrika alihe R 2.00 kombanda yomafuta R 3.00.

Oondando nomambesitelo naga tumwe kOmukwetu Oniipa: P/B. 2013, Ondangwa.

Omatseyitho agehe gomuntu mwene ohaga futi-lwa kumwene.

OWAMBOKAVANGO CHURCH PRESS
PRIVATE BAG 2013, ONDANGWA S. W. A.
9270