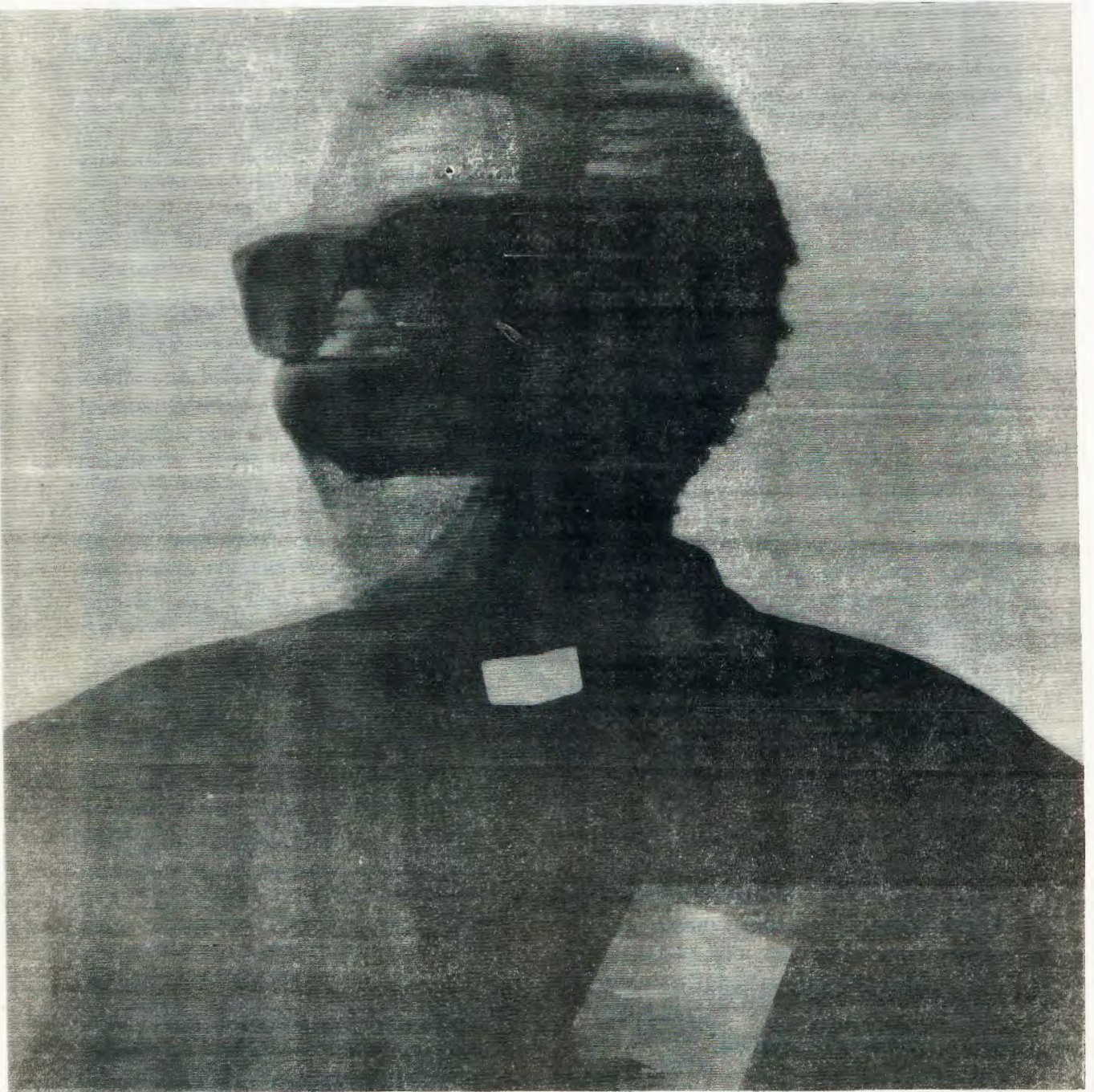


OMUKWETU

Registered at the General Post Office as a Newspaper



**OMUSITA OMUKULUPE TATEKULU SAKEUS IHUHW A NGOKA A
YAPULILWA OSHILONGA SHUUSITAGONGALO OMUMVO 1925,
OYE AWIKE E LI PO SIGO ONENA GWOMEYAPULO LYOTA-
NGOTANGO MONGELEKA YAELOK.**

IIHUHWA-NENE A KOLO ISHEWE

Omusita omukulupe lela gwOngeleka yaELOK, tatekulu Sakeus Ihuhwa, okwa ningile omasiku moshipangelo moNakayale. Ngashingeyi okwa shuna kegumbo.

Tatekulu Ihuhwa, oye omusita gwotangotango a yapulilwa oshilonga shuusita pamwe naasita ooyakwawo yaheyali, 1925. Oye awike gwongundu yawo, Kalunga e mu kaleke natango momwenyo. Aasita ooyakwawo ya ka vululukwa nale kiilonga yawo.

Omusita Ihuhwa gwoomvula dhi thike 100, okwa humbata natango oshimpwiu shoowwenyo dhoyendji.

Pahokololo lyomundohotola moNakayale, kuku Ihuhwa ota yuulukwa kegumbo, okuningila aatekulu ye egalikano nokuyakula pamwenyo mboka haye ya kuye.

Manga ta lala mombete yuuwehame moshipangelo, okwa yakula okahanona meshasho eyapuki.

likaha yomukulupe a manwa oonkondo kuuvu nokuukulupe, oya kala tayi kakama kombanda yomutse gwokanona.

"Onda tala aakuluntu yokanona kutya oya li taa nyanyukwa shili okamwana sho ka yambekwa komukulupe."

Osho omundohotola Marikka a hokolola ngoka a kala meyakulo lyoshipangelo shoka okuza Juli nuumvo.

Kuku Ihuhwa okwa tsakanitha omimvo 50 moshilonga she nuumvo Natango omulaadhi nependa.

Tse aagundjuka otwa fa tatu si ohoni okutala uunyengwi wetu moshilonga, manga ye a fa ta vulu natango oshindji. Ihe kuye otwi ilongo ethimbo ele nkene esilohenda lyaKalunga tali humbata mboka e ya ithanena eyakulo. Otashi tu tsu omukumo.

ELONGELOKALUNGA

Mokukala kwetu kovanhu otwa fa tuhe u iditeko nawa, ngenge taku tiwa ohatu yi kelongelokalunga, okuya kwa tya ngaha otali ti: omunhu ta yi kuKalunga kaye, Kalunga omunamwenyo ou e li omushiti womunhu.

Oshilonga eshi ka shi shi ngeno Kalunga oye e kulongele, ndelenee omunhu oye ta longele Kalunga kaye, shashi Kalunga okwa ufa omunhu e mu longele fimbo e li momwenyo.

Omafimbo aeshe oo wa pewa kouyadi wonghenda yaKalunga u mu longele, otashi ti eshi shi ninga nohole noku mu fimaneka, oyo u ha nyekwe oupuna woshilongo sheulu. Ina kelongelokalunga oko to mono edimepo lomatimba neveluko lomaudu oo taa kunwa komutondi satana ou e li omunandubo nelongelokalunga.

Mehangano loyayapuki omo tuu u li? Ounyuni ou na omaheko eli li nokuli li, ndelenee ove owa dikwa epandele lefindano omushiyakano wOmwene wetu Jesus Kristus. Konga hano eenghono dipe alushe melongelokalunga noposhitafula shOmwene, oyo u kale wa manguluka. "Onghee hano, ovamwatate ovayapuki naava mwa ifanwa keifano lomeulu. Omadiladilo eni a kanyatelifeni komuyapostoli nokomupristeri omukulunhu wehepaululo letu Kristus Jesus" Hebr. 3:1.

Ev. Paulus Hamukwaya

Oontokolwa dhEpagelongoleka lyaElok lyomasiku 25-26 gaSeptemba 1975.

19.

Epagelongoleka olya koleke omafaneko gomataambo gaalongwa aape kOshigambo. Epagelongoleka olya utha wo kutya aalongwa moskola yokOshigambo ya kale haa futu wo kashona R20.00 kOmumvo, okwaambidhidha oskola ndjoka. Opwa uthwa ya tameke nokufuta huka petameko lyomumvo tagu ya 1976.

20.

Epagelongoleka olya koleke ontokolwa onti 9 yoDagbestuur ndjoka ya utha kutya ngashi omunashilonga gwongeleki ena uuthemba wokumona ondjambi ye yuudha uuna a pewa efudho lyoomwedhi mbali, osho wo omunashilonga a tya ngaaka ena uuthemba wokupewa ondjambi ye yuudha uuna a uthilwa oshilonga shontumba kEpagelongoleka oomwedhi ndatu.

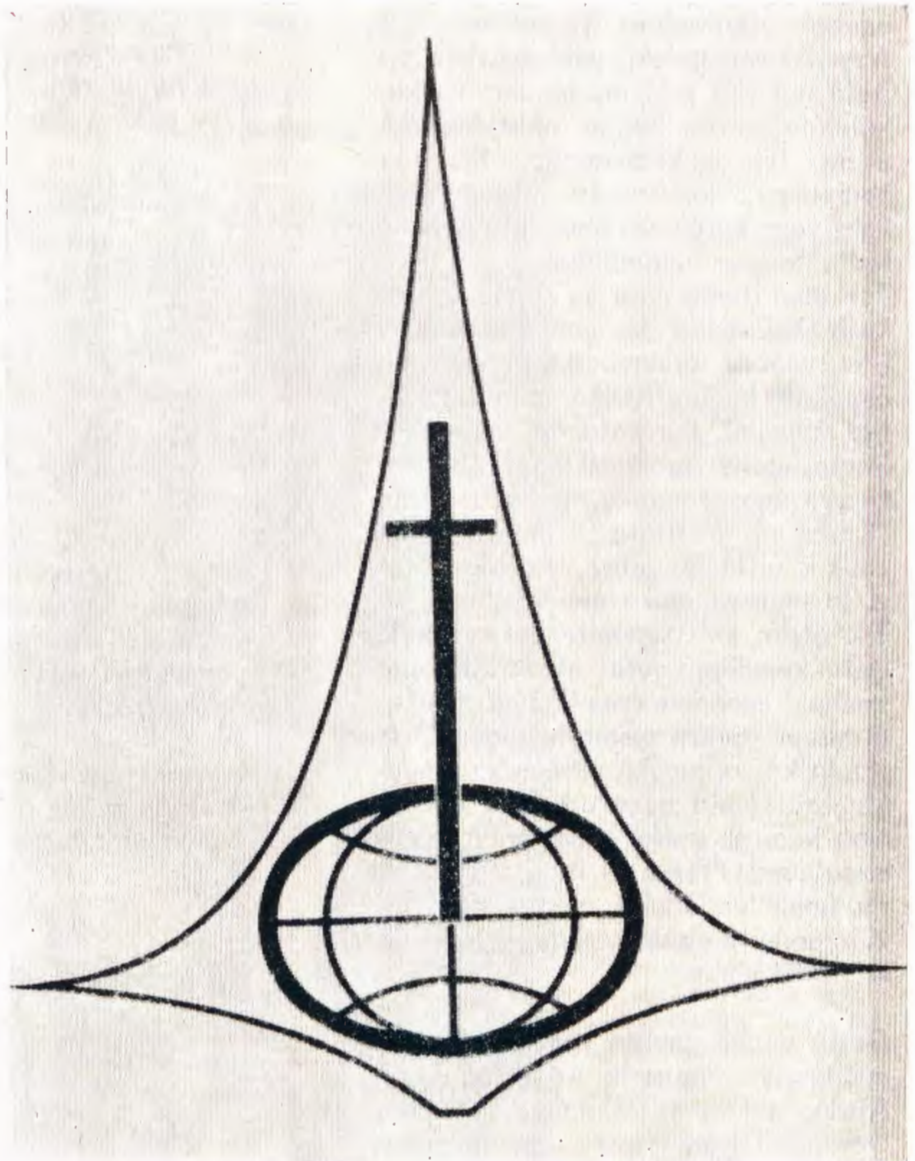
Omutekulu gwe omusitagongalo Josaphat Shanghala oye ta lele ngashingeyi egongalo lyaNakayale ndyoka e li lele ethimbo ele, mOmbalantu.

Natango omukulupe nguka oku li "etungwa lya keelela ombepo" mOngeleka yetu. Oye he yongeleka natse tu li oyana. Okwa pumbwa omagalikano getu ngashi naye wo a hwama natango oku tu galikanena.

OMBAPILA YAMUSHANGA GWA-
LWF DR CARL MAU YETI 18/9/75
YA NYOLELWA OMUMINISTELI
GWOTANGO OMUSIMANEKWA B.
J. VORSTER:

Efano ndika olyo Endhindhiliko
lyongongahangano yaakwaLu-
ther muuyuni auhe moka omusa-
mane C. Mau e li amushanga o-
mukuluntu.

Omusimanekwa
Neitulomoshi-
mpwiyu
enene ndyoka tali
tana aluhe, otwa
kala nokulandula ii-
ningwanima mbyo-
ka tayi gumu o-
kukalamwenyo
kwiilyo yongeleka
dhetu mbali mu-
NAMIBIA. Moku-
tsikila nethindo
lyomukalowiliko
gweyambulopo lye-
ikalekelo, uuku-
mwe mbuka onae-
leka tayi wu ko-
ngo mokuhanganitha
aantu ayehe
yomoshilongo sho-
ka otau katwa.



Mokuthindila omapitikilo gokukala
moshilongo, nenge oku galelepeka,
gaawilikingeleka mboka haa zi ko-
ndje yoshilongo mokwiithanwa yeye
ya yakule moongeleka ndhoka, oha-
shi katekwa. Momakwato wo moka mu
na aasita naalongi niilyo yongeleka
nomokutidha aasita naawilikingeleka
moshilongo, otashi tu fala medhila-
dhilo lyokutya, Epangelo lyaSuid-A-
frica olyi ikwatakanitha nomukalo
gwokuumpila oongeleka oonkwakriste
muNAMIBIA.

Pamukalo ngoka gwaa shi kwiidhidhi-
mikilwa otagu alula uufikumwe woo-
ngeleka ookwaLuther muuyuni. Shika
otashi kolekwa kiinima oyindji mbyoka
kaayi uvitike ko kaawilikingeleka no-

kaakwanezimo lyoonkwatwa mokuta-
la mboka ye edhililwa pwaa na epu-
lakeno netompelo lyuusama.

Omaindilo gaakwanezimo nogaawili-
kingeleka oku ya talela po, ihaga zi-
minwa. Uuhasha wa tya ngeyi mbu-
no tau longithwa otau ehameke eiu-
vo lyaaholimanguluko nombili muu-
yuni auhe.

Omuministeli gwtango omusimane-
kwa, shoka tashi ehameke unene
mwaayihe osho shika kutya, tse otwa
tseya kutya, onkatu ya tya ngeyi ota-
yi eta eyonuko lyaa shi kwoopalekwa
we mompito yokuhanganitha nokwee-
ta ombili moshilongo. Ombili neha-

Tala kep. 4

**OMBAPILA YAAMUSHANGA
GWA LWF**

Dha za kep. 3

nganitho mokulongithwa kwawo monkalamwenyo yaantu esiku kehe oyo naanaa etumwalaka lyopakriste.

Aawiliki yoongeleka oonkwakriste oyi itula mo sha yela moshinima shokukandula po omikundu dhaNAMIBIA pwaa na oonkalankongo. Ihe sigo oompaka, onkene ngaa natango ye li kohi yomakatukilwo goonkatu ndhoka tadhi taneke omaudhigu.

Tse otwi itaala notu na etompelo lyokwiinekela eopaleko monkalathano ayihe yaantu muumbugantu wAfrika nopokati kaSuid-Afrika niigwana yi-lwe muuyuni. Ihe natango molwomakwato ngaka gongashingeyi nomakwawo ngashi ngoka, gokukondjitha "Christian Institute," iiningwanima mbika mUumbugantu wAfrika, otayi tu mpwiyupaleke unene.

Tse otatu ku tseyithile kutya, ehala lyetu kombinga yetu okukwatha mokumona epondolo lyomikundu monkalathano yaantu yomoshilongo. Otwi itaala kutya, mpoka uuthemba womuntu tau yonwa nena otashi ti uuthemba waantu ayehe yomuuyuni ou li moshiponga. Tse otwi itula mokukwatha oongeleka dhetu, mpoka tadhi yakula omuntu aguhe mehala kehe mpoka tadhi longo.

Otatu popile ompito yoongeleka dhomuNamibia, ngaashi wo dhomuSuid-Afrika, dhi longe oshilonga sheuvitho lyevangeli lyomwenyo pwaa na omaimbo. Tse otu shi shi mokuninga shino mbala, omaupyakadhi gaa shi okutumbulwa goshilongo nogetu atuhe, otaga kandulwa po.

Koongeleka dhi li iilyo mOngongahangano yAakwaLuther

(a) Kakele kombilive ndjika ya nyolelwa omuministeli gwtango omusimane kwa B. J. Vorster kwamushanga gwOngongahangano yAakwaLuther, amushanga okwa nyolele wo oongeleka ndhoka dhi li iilyo mongongahangano yaakwaLuther muuyuni, pambapila ye yeti 22/9/1975 te dhi indile dhi tu dhimbulukwe momagalikano omolwiiningwanima yethimbo ndika pahapu dhomuyapostoli Paulus sho a

ti: "Oshilyo shimwe, ngele tashi ehama nena olutu aluhe otalu ehama nasho." Koongeleka ndhika Amushanga okwa ti:

1) "Iiningwanima mbika yi tseyithileni montaneho yomagongalo geni nomiilongo yeni, ne mu indile aakwa-negongalo yeni ya galikanene oongeleka ndhika dhi li momahepeko.

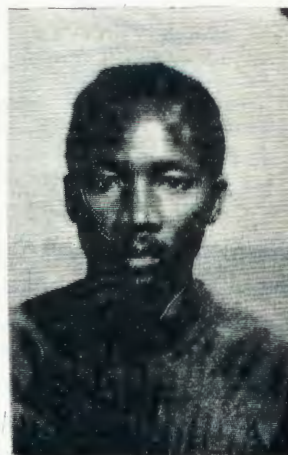
2) "Hedheni wo komapangelo giilongo yeni mu ga indile opo ga ninge shono tashi vulika okuguma Epangelo lyaS.A. li hulithe po okuumpila Oongeleka naawiliki yayo, ihe li ninge po shono tashi eta po ombili nuuthemba wopantu mOshilongo shoka."

(b) Osho wo oongeleka onkwaLuther muAmerica ngaashi: ST John's Lutheran Church the Lutheran Church - MissioriSynod Faith Lutheran Church miigongi yaasita nomiigongingeleka yadho odha holola eitulomo neuvitopamwe momaudhigu gethimbo ndika, nodha uvaneke oku tu galikanena, o-po ehala lyaKalunga li gwanithwe kombanda yeve ngaashi hali gwani-thwa megulu.

Pambapila dheti: 24 Juni 1975

10 Septemba 1975

17 Septemba 1975



Silas Shatika
(Kaalvoete)

OPYAMUKUYU STORE

Ositola yandje oya li ya mono oshiponga shomulilo eti 22 Kotoba nuumvo, ya pya po thilu, ihe inamu monena nando omuntu oshiponga, kakele keliko ndyoka lya pile mo. Ookuume kandje amuhe mboka tamu kwatha okuumba ehangalyapya omolwositola yandje, otamu shi ningi ngeyi:

Okahao	Omugongeli	Getrud lileka.
Opyamukuyu	" " " "	Maile Shatika.
MOvenduka	" " " "	Daniel Abraham
Grandhotel	" " " "	Julius Joram
Mokondehotela	" " " "	Jason Shetunyenge

Silas Shatika (Kaalvoete)

OMUTHIKA GWAANASHILONGANGELEKA NEYAKULO LYAWO METHIMBO NDIKA

Ayakuli aaholike, onda nyanyukwa oshoka oshinima otashi ka kundathanwa, nondi shi shi otatu ka mona uuyelee kaayakuli moonkundathana. Mokutamekitha oshipopiwa shika onduuvite moshipalanyolo shika mu na iinima mbika:-

A. Aanashilongangeleka

B. Oshilonga shawo osho eyakulo

C. Omuthika nenge ehala mpoka ya thikama.



Rev. K. Dumeni

1. a. Aanashilonga mbaka olye?

Ombimbeli otayi tu pe omadhina oge-ndji, ihe otandi tumbula owala gamwe Pamaithano getu otashi vulika tatu adhika momaithano ngaka:

b. Elenga (steward) Luk. 12:42-48. Elenga lyegumbo nomudhiginini gwiinawe yegumbo, e na oshilonga e shi inekelelwa ku mwene gwegumbo. Oyo omalenga gegumbo lyaKalunga olyo e-gongalo Ongerki ye.

c. Omutumwa "Omutseyithi" (Herald) Omutumwa nguka netseyitho ndika pashitya shika olyo o-lyopashilongo, elaka lyomukwaniilwa nenge lyepangelo tali tseyithilwa momapandaanda, naamboka nenge okugongela aantu, nomutseyithi ota tseyitha elaka ndyoka.

Aatseyithi yelaka. Luk.9:60. "Inda u ka uvithe oshilongo shaKalunga." Iil.10:36-37; Aatseyithi yelaka lyaJesus.

d. Aauvithi "Ota uvitha Kristus." 1Kor. 1:23.

e. Aapeha yaKristus (Ambassadors) 2Kor.5:18-21. "Ota tumu ko aatumwa" Aapeha ye, aakalelipo ye. Luk.14:32. Ano oyo ngaa aapeha yaJesus .

f. Oonzapo (Witnesses) Oshitya oshi na sha noompangu mohofa. Osha yela uuyuni otatu sheke ukriste. Satana ota gandja uusama koshilonga shaJesus. Ombepo otayi ithana ooitaali opo ya kale oonzapo okupopila oshilonga ashihe

shOmukulili shaa shekwe noshaa pewe uusama. 1Joh.5:19-21; Iil.3:15,16; 10:41-43; 13:31; Joh.15:27. Oyo oonzapo dhaJesus ya mona nenge yu uva, taa popile oshili ndjoka mohofa yuuyuni mbuka montaneho nomeholamo.

g. Oohe (Fathers)Aaputudhi 1Kor.4:14-15 oyo aantu mboka ye na ohole yaa- mboka ye ya pewa kumwene gwawo Jesus h. Aapika, Ayakuli, (Servants). Mbaka oyo ongundu yaayakuli taa longo pamwe na Kalunga. Aapika kaye na sha mu- yoyene ihe otaa ningi shoka Jesus ta ti notaa longo ehala lye. 1Kor.3:5; Fill.1:1.

Tala kep. 6

OMUTHIKA GAANASHILONGA-NGELEKA NEYAKULO.....

Dha za kep. 5

Aadiakoni.

Shoka sha yela osho shika moongundu adhihe twa tumbula ayehe OYA PEWA OSHILONGA, oya langekwa moshilonga; itaa gwanitha ehalo lyawo, ihe olyOmuwa gwawo.

11. *Oshilonga shawo osho eyakulo.* Oyo ano aalangeli yegumbo lyaKalunga. Aapukululi ya ayehe aapagani naakriste Hes.3:16-20 Pwaa na omayoololo gasha. (Eindilo kAakwaluther mUumbugantu waAfrika otali ti:

"Oshinakugwanithwa shetu"

Tse otatu hiya aakriste Aakwaluther ayehe ya hangana pamwe natse moku-taamba nokwiitula mo mehiyoindilo ndika ye ekelehi omisindilo ndhika omiyeni noku keelela kaadhi kale odho tadhi utha okukala kwetu nokulonga koongeleka dhetu. Moku-taamba nokwiitula mo mehiyoindilo ndika, otatu uvaneke okukondjela nokuholola po uugumwe woshili nou shi okwiinekelwa meitaalo nomokuuvitha.

Aanashilongangeleka oyo ongundu yaa-yapuki. Oyo otaa yooloka mushaa shoka shaa shi ongeleka nenge shaa shi shoshili, nenge itashi tungu ombili. Aanashilonga oye na ELAKA ndyoka taa yi nalyo mongundu kehe. Itaa gama kombinga yontumba nokulongitha ongundu yongandi. Oye na EHALA LYAWO, ya mangu-lu-ka ku yalwe, ihe otaa kongo ekwatathano naayehe nelalakano limwe alike. "Ndi sinde, ndi likole" 1Kor.9:19-23. "Itaa faathana nuuyuni aawe." Omusele-kadhi gumwe omusamane gwe a dhipagwa ota ti:

"Itandi vulu okutonda aadhipagi yomusamane gwandje, otandi galikanene omwenyo dhawo." Rom.12:20,21.

IV. *Elalakano lyaanashilongangeleka.* Elalakano olya yelithwa mokatopolwa hoka twa zi. Otandi dhimbulutha Etumwalaka koma-gongalo gaELOK. 30.6.1971nosha endululwa 1974.

"Ombili nayi kale nane" Joh.20:19. Otatu mu indile mu kale nombili nomu kale mu li mombili, tu konge aamwameme miigwana ayihe, Otatu mu kumagidha wo mu tunge oontopa nohaku teya omatsakaneno nenge omatsikililo.

Aakwanegongalo aaholike, itatu dhiladhila tu kune uutondwe nuukwaa na ombili, nomakondjithathano nelaka ndika.

Elalakano lyetu olyo okukala mOshili nomonakuiwa ombwanawa, yaantu noyigwana yetu nonando tu hepekelwe elalakano ndika.

Naku ningwe omagalikaneno omolu aantu ayehe. 2Tim.2:1-2.

Omukalo gwokuyakula nokupukulula o-gwa kankamekelwa:

Okudhiginina OSHILI MOHOLE. Ef.4:15. Opo ya tseye oshili. 2Tim.2:24-26.

OMAEHEPEKO

Okukala moshilonga shika otashi vulika tashi fala sigo omehepeko 1Petr.4:12-16. Onawa ngele taa hepekwa oshoka aakriste, aayakuli oyo ewi lyaKalunga muuyuni, Titus.2:7-8. Kalunga muyo. Otaa dhiginine pwaa na uumbanda okugwanitha ehalo lyaKalunga nando shi fale momahepeko nenge meso.

8. EHANGANITHO NOMBILI

Tse otatu koleke kutya, oshilonga shonengeleka osho okuuvitha evangeli lyehanganitho hakulongitha oonkondo nuukolokoshi. Aakriste oyo aatungimbili mboka taa tumwa mokati koshikungulu, oyo ya lundulule nekondjo lyombili omulandu nonkalo yomathiminiko.

9. *OLUNZA LWESHITULUKO LYETU* Tse otwiitaala kutya, okulandula Kristus otaku tu hilile mpoka tu taambathane nopwaa na nando okutala kutya, oshike tandi likola mo.

Ngashi ye e tu taamba, tu kale tatu holola uumwayinathana wopakriste, tse tu koneke nokudhimbulula momuntu kehe oshifetha sha Kalunga shoka Kalunga e shi negela mo nokutya uuyuuki mboka e u tu pa owo u na okukala oshiyekitho, ekota nomukanka gwokukalathana kwetu omuntu nomuntu nomongundu.

K. Dumeni

EPULO KONGELEKA

Oilyongeleka mOngeleka onghwaevangeli paLuther yomOwambokavango omudo wa dja ko 1974 oya hapupala nomuvalu u fike pomayovi omulongo noixupe.

Osho sha dja mevalulo lopexulilomudo keshe lomuyakuli wovanashilonga, omufita Toivo Pentikainen.

Mehokololo eli tate Pentikainen okwa ti kutya pexulilo lomudo 1973 otwa fikile po novakwaneongalo 224,851, ndele pehulilo lomudo 1974 otwa fika po tu na ovakwaneongalo 235,053. mOngeleka. Ewedelo ovakriste 10,202.

Ovakriste 86,442 aveshe ove na oufumba okuya kOuvalelo Uyapuki. Osho ehokololo la holola. Etano lovakwaneongalo ohali etwa unene kounona wovakriste ovo tava shashwa, nokovalidilululi.

IILONGA YENI KAYI SHI OSIMA

Omakwatho geni ngoka mwa kwatha nago etungongeleka lyegongalo epe Elombe, oga thika nawa onkee egongalo ndika otali mu halele omayambeko miilonga yeni.

Omusamane Israel Jona ngoka a gandja iipeleki yondando yi thike po R 213,20 osho wo tate Paulus Nepolo a gandja R 40,00. Kalunga ne mu pe uukolele neyambeko mokulonga kweni. Peha lyegongalo Rev. M. Amushila



Omusamane H. D. Namuhuya

QUO VADIS SUIDWES-AFRIKA?

Oshipalanyolo shoka shi li pombanda, osha zi melaka lyOshilaatina. Efatululo lyasho otali ti: SUIDWES-AFRIKA, OU UKA PENI?

Pomathimbo gongashingeyi, epulo ndyoka olyo tali uvika komuntu kehe ngoka e na sha nuwanawa wevi ndika lyetu, nomuntu kehe ngoka a hala omukundu gwaSuidwes-Afrika gu kandulwe po kombili.

Elenga limwe lyAandowishi, omusamane Otto von Bismarck momumvo 1862 okwa popile ta ti: "Oonkundathana nomatokolo itaga vulu okukutha po omukundu gwe-thimbo lya dhiladhilwa ihe omukundu ngoka otagu kuthwa po kiiyela nokombinzi." Shika okwe shi popile ta dhiladhila Ndowishilanda sho a hala li hangane.

Tseni atuheni kapu na nando gumwe ngoka ta dhiladhila ngashi Otto von Bismarck. Tse ishewe itatu tsu kumwe nomadhiladhilo ge. Tse otwi itaala kutya: Omukundu gwaSuidwes-Afrika itagu kuthwa po nando okiiyela nokombinzi, aawe, Otagu kandulwa po owala KOOKUNDATHANA.

Ihe sho oshinima shi li natango ngaashi shi li, epulo ndyoka lya pulwa pombanda otali ya ethimbo nethimbo: SUIDWES-AFRIKA, OU UKA PENI? liningwanima yomuuyuni, naashoka tashi ningwa muAngola, otashi pendutha aluhe epulo ndika: QUO VADIS SUIDWES-AFRIKA?

Hans D. Namuhuya

ONGELEKA YO OTAI LU MUANGOLA

Oimaliwa yeedola doshiyamerika i fike peemiliyona 6 konyala (R3,000,000) oya konekwa ya pumbiwa po okukwafa momatau Ovaputu moshilongo sha-Angola moule weehani nhano okudja Kotoba 1975.

Moshilongo osho sha xutulwa koita omwa monika yo nokutya ondjala otai hapupala momatau omeni loshilongo eshi, ovanhu tava faduka po oita navamwe eshi tava alukile moshilongo eshi va fadukile po epangelo laKaputu.

Oikumbafa, oikutu yokudjala, omiti dokuhakula neendohotola osho yo oikulya yeevitamine, aische ei ihai ulikwa mo vali muAngola.

Eshi osha hokololwa kokangudu ka tumi-nwe kOraata yEengeleka mounyuni (WCC) okukonakona oluhepo lwa etwa koita moshilongo osho. Okomitiye oyo oya aluka muAngola nehokololo tali ti:

"Shimha tuu Angola inali mona omhito yokukuna okutameka Novomba, ondjala ei tai ka kala moshilongo osho odula tai uya 1976, oyo ngaho ei inava mona nghe va dalelwe."

Kwaashi sha holoka moshifo shOraata yEengeleka mounyuni (EPS 30/10/1975) oikumbafa 10,000 eetona 12 domashini nomiti i fike peekilograma 450, oya tumwa ko nale nokuli. Ngenge ya fika moLuanda, otai ka halakanifilwa keembinga doshilongo kodila yEhangano lomushiya-kano utilyana (Red Cross) paudafano, ehokololo osho tali ti.

Oifo ihapu otai holola nokutya omapangelo mahapu okwa vatela eengudukondjelimanguluko noilwifo, moshilongo osho.

Ongeleka yomounyuni oya tokola oku ka wanifa oshinakuwanifwa shayo okuyandja ouhaku noikulya kwaavo ve li mokati koita, kape na ondjoolola.

Oshilonga osho otashi longwa mOraata yEengeleka (WCC) koshikondo sheongalo lomakwafo meni lOngeleka, palongelokumwe nEengeleka domuAngola.

(EPS)

OTA FUDHA PO MANGA

Tate Malakia Amuthenu omweevangeliste gwa-Elok ngoka a kala mpeyaka kuSwakomund moshilonga shevaangeli okuyakula aamati yomehalakano, miilonga yawo mondoolopa nomoomina pondje yoshilongo shoka shaMoonda, okwe ya manga a fudhepo pegumbo lye pOniipa. Tate Amuthenu ota ka shuna kiilonga ye kOmbundu-yakiiyala petemeko lyaJanuali gwomumvo tagu ya Kalunga ngele e shi hala.

ETUMWALAKA KOMAGONGALO

Omupresidente gwOngeleka ya hangana mu S.W.A., dr. de Vries mombapila yopausita eyi nyolele omagongalo, okwa ti:

"Aamwameme aaholike Kalunga ita wilike Ongeleka ye osima momasiku gomilema, gomamakelo, nogomaudhigu. Oye okwa hala e tu hilile kuye opo tu mone wo oshitopolwa meudhililo lyohenda ye. "Tse katu na oonkondo mutse yene, ihe otu dhi na muye ngoka a sindi nale uuyuni." "Tse otatu sindi nokusindilila molwaKristus ngoka te tu pe oonkondo." Omuyapostoli osho te tu longo.

Epangelongeleka otali hiya omagongalo agehe opo ga longekidhe omathimbo gomagalikano okufala onkalo yevi lyetu koshipangelapundi sha Kalunga, okugalikana kaa pitike evi lyetu ehohike lyaa tikile ombinzi, kutya uuyuuiki u sinde okwaa na uuyuuiki, okwaanondjo kwaa mboka yaa noondjo ku hololwe, oonkwatwa yamangululwe ya galukile kaaholike yawo, Kalunga a gamene Ongeleka ye koonkondo oombwinayi ndho ka tadhi keelele etumwalaka lyombili li taandelithwe.

Epangelongeleka otali hiya wo omagongalo gaa longithe ondjila yekuni ekuni ohali vala ekuni, noitali eta uwanawa taukalelelele. "Konga ombili yoshilongo." Shika osho oshinakugwanithwa shetu shotango nosha simana. Otatu mu kumagidha pamwe nomuyapostoli: "Galikani mwa na ezimbuko.

Ya shainwa komupresidente
gwaVELKSWA

dr. L. de Vries

OMWENE OHATU MU LONGELE

Oshilongayakulo mepya lOmwene otashi longwa noudjuu, osho yo noupu, mokingonoka omikunda momaongalo, ohatu shakenekwa koinima ihapu nokomapulo mahapu, ndelenee ayishe eyi Omwene ote yi pupaleke nokunyamukula nonghenda.

Momikunda omu na ovakulupe tava pu mbwa eyakulo komwenyo nokolutu ovapofi, oingudu, ovadini eengholwe n.sh.t, ndele nande ongaha eshi oshi shii ashike okutiwa Pamba opo e li, monghendabala keshe oyo tayi ningwa medina laye.

Efiku keshe Kalunga ota koleke ovapiya vaye okuwanifa oshilonga shaye shi tandavele mokati kovanhu vo va shive ondaka yomufita wavo. "Omwene oye omufita wange, inandi pumbwa sha." Ps.23:1.....

Ev. Dan Ngh. Hamunyela

OVAHERERO ITAVA POPILE OPULANDA YAODENDAAL OYO YA KANGHAMEKE-LWA KOKUTUKAULA OVANHU VOMUNAMIBIA

Momutumba oo wa li mOvenduka omafiku aa, Ovaherero ova yandja oitwa oyo ya fimana komunhu keshe omukalimo wa S.W.A. hasha nee kutya omulau- le ile omutilyane eshi osha kwatela mo ashike ovanhu avesho.

- a) Opulanda yaOdendaal yi kale ya dja- po.
- b) Omukalo weepaasha itau pumbiwa.
- c) Napu ningwe okakomisi, opo ka konakone ngeno shi dulike, enhauki odo di li pondje di alukile moshilongo.
- d) Osho yo oufikepamwe moilonga.
- e) Oukwamihoko nau dje po pokati kovanhu.

Ei oyo nee oitwa ya yandjwa kOvaherero mokukundafana omukanghaveta wedu eli S.W.A.

(Die Suidwes Afrikaner 14.11.75)

OMAMBO MAPE A HOLOKA

KOfitolamambo kOniipa, okwa holo- kela vali omambo mape:

1. Praktiese Ndonga, tali kosho R3-00
2. Epukululohombo, tali kosho R0-90
3. Ondjalulamasiku 1976 ya holoka yo otayi landwa 30c. MOndjalulamasiku omu na nee efiku 31 laJanuali la kana mo.

Didilika otekiste yefiku olo hano oi li ngaha: Rom. 11:13-22 na Mark.6:14-29.

Eendelela hano u lilandele oumbo ovo fimbo inava pwa po.

OMUKWETU

Oye oshifo shOngeleka onkwaevangeli paLuther yomOwambokavango. Ohashi nyanyangidhwa mOniipa. Omukuluntu gwoshifo omumbisofi dr. Leonard Awala. Amushanga Rev. Sebulon Ekandjo

Ondando yoshifo komumvo muSuidwes nomu- Afrika alihe R 2.00 kombanda yomafuta R 3.00.

Oondando nomambesitelo naga tumwe kOmu- kwetu Oniipa: P/B. 2013, Ondangwa.

Omatseyitho agehe gomuntu mwene ohaga futi- lwa kumwene...

**OWAMBOKAVANGO CHURCH PRESS
PRIVATE BAG 2013. ONDANGWA S. W. A.
9270**