

# OMUKWETU

Registered at the General Post Office as a Newspaper



Omusamane Gideon Shaningwa pamwe negumbo lye, tate Shaningwa oye omushingithi gwoshifo "SHOMUKWETU" moNakayale, ngoka e na ongundu yaaleshi yoshifo yethike pomilongo hamano nayatatu.



OLYE NGO TE TU TOPOLA MOHOLE  
YAKRISTUS Rom. 8: 35-37

Oshipalanyolo shomumvo nguka otashi pula oshindji noonkondo: "Ohole onene yi vule ayihe." Ngoka awike a thiki mohole yaKristus, oye awike ta vulu okupula nga Paulus oye ngo te tu topola mohole yaKristus?

Pokati komuntu naKristus ope na iitilithi oyindji nomahalutho nomahekohongololipukitho. Paulus ota tumbula "uudhigu." Omukriste kehe mokulandula Omukulili ota tsakanekwa komaudhigu gi ili nogi ili. Ngashi Jesus a lombwele aalongwa ye ta ti: "Muuyuni omu li mo mu nuudhigu" Joh. 16:33. Nomatumbulo gamwe Jesus ota ti: Ngoka a hala okulandula ndje ni ihupule ni itsike omushigakano gwe ye nalandule ndje.

Omushigakano nenge uudhigu kehe otu tsakanekwa omukriste mondjila ye, omolwa sho Paulus ta pula ngaaka kutya: Olye ta vulu oku tu topola mohole yaKristus? Paulus okwa tseyo ootaali oyendji ya topolwa naKristus komaudhigu gontumba gongandi. Nonena epulo ndika otali thikama koshipala shoomwenyo dhetu, li li ngaashi opo tali zi mokana kaPaulus. Olye ngo te tu topola mohole yaKristus? Oyendji twa topolwa mo komaudhigu gethimbo lyetu, notwa taganekela aantu yalwe omeho anuwa oyo ngaa taa tu etele uudhigu monkalohu-

mokomeho yetu.

Nomokati kuudhigu epulo ta li ya kutse lyaa nohenda tali ti: Olye ngo te tu topola mohole yaKristus? Ngoka a makele ohole yaKristus nokwa ningi omupika gwayo ota taalele Kristus moka ta yamu ohole a vule oku pita muudhigu nohole yaKristus otayi mu ningi omugalikaneni gwa yalwe nogwaatondi ye. Holeni aatondi yeni, galikaneneni aahepeki yeni Mat. 44. Otwala kala ethimbo ele etumbulo ndika itaa li ti sha kutse, ihe nena omuleshi kehe ota gumwa kulyo: Olye ta topola ndje mohole yaKristus?

Ngoka inaa gumwa kulyo osha yela kutya okwa topoka nale naKristus oye omusi te ende, oshoka ngoka kee mo mohole yaKristus oye oku li meso:

Shoka Omuwa Jesus e shi hunganeke nale osha makelwa nale, kutya ootaali nevi alihe otali ka adhika kuudhigu Ongeloka yopomathelemimvo 100-200 nosho wo muuyuni wopokati oya mono omamakelo omaudhigu gi ili nogi ili.

Ano unene tse mboka twa hedha pehulilo lyethimbo otatu pulwa: Olye ngo te tu topola mohole yaKristus? Omuyapostoli okwa li a tseyo iinima yilwe mbyoka tayi vulu okutopola omuntu mohole yaKristus oyo:

a, Uudhigu omuntu ti iteka Kalunga.

b, Oothina oshimpwiyu shuuyamba nokahalu keliko

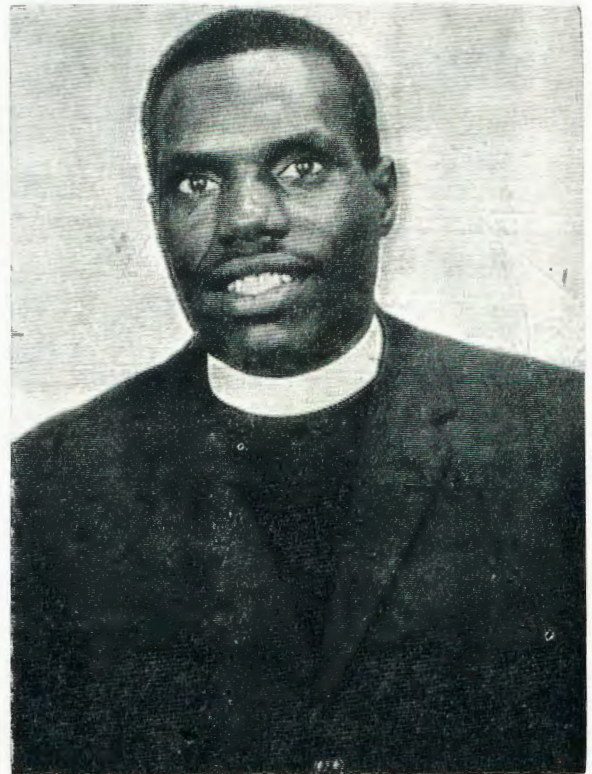
c, Etidhagano uuhokololambinzi

d, Ondjala otayi tala omuntu momalundilo, opo omuntu i imonene iimaliwa, omboloto, a hupe lyonena pethimbo ndika. Ondjala yiimaliwa otayi longitha aantu iihuna noya topola aantu mohole yaKristus.

e, Onkayi otayi vulu okulongitha omuntu iihuna

f, Uuyina, iihuna ya pitilila otayi dhimbitha omuntu Kalunga, omuntu oti idhimbike eitaalo.

g. Egongamwele okuhepekwa nokudhipagwa nokuli: "Ongoye tatu ku dhipagelwa omutenya aguhe otwa talwa ngaashi oonzi tadhi dhipagwa" Eps. 44: 23: Nonzigona sho a matula oshihako oshittano okwa monika kohi yeyambelo oomwenyo dhaamboka ya dhipagelwa oohapu dhaKalunga nehokololo lyawo oya li ye li na, noya lombwelwa ya vululukwe manga sigo omwaalu gwa gwana ogwaamboka taa ka dhipagwa ngaashi oyo: Ehol. 6:9-11.



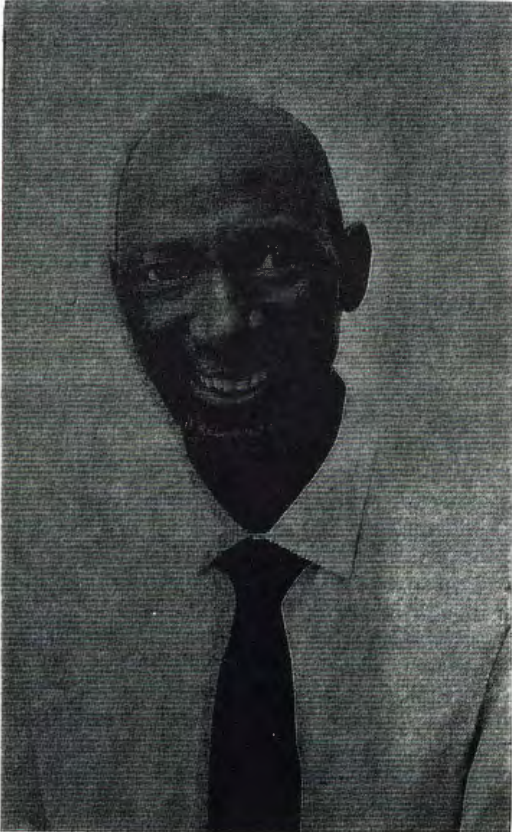
**Rev. Titus Ngula**

Omuleshi omuholike iitsa mbika iheyali otayi tu tsakanekwa esiku kehe nondjila yomukriste sho ta landula Omukulili gwe: noya hala yi tu topole mohole yaKristus Jesus Omuwa gwetu: Ombimbeli inayi shi holeka kutya: "Ayehe mboka ya hala okukala pakutilla Kalunga muKristus oye nokuhepekwa 2 Tim. 3: 12. Ngele tatu kala mohole yaKristus Jesus otatu sindi, taku tiwa nokuli nokusindilila. Kalunga mokuyelulitha uuyuni wa Noa eyelu ina adha esindano nokuhanagula po Sodom naGomora nomulilo nomageelo omakwawo a geele nago iigwana inapu adhika esindano. Tala sho a longitha ohole. "Oshoka osho Kalunga kwa li e hole uuyuni, oye a gandja Epona lye opo shaangoka e mu itaale kaa kane ihe a mone omwenyo gwaalu-



Ndika olyo eindilo lyandje, sho nda li moshiponga shekandomo lyoshihauto omasiku sho ga li 2-9-1975, nziyanziya ondi ithana "Omuwa hupitha ndje moshiponga shika." Opo tuu mpoka Jesus okwa hupitha ndje shili. Kalunga ota hupitha shili ayehe mboka taye mu inekele, oshiponga nando nashi kale shi thike peni, Omuwa ote shi kandula po. Otandi hambelele Kalunga sho nda hupu moshiponga shika shoshihauto. "Ongoye shili omuna gwa-Kalunga" Mat. 14:33b.

Lukas Amupolo



Omusamane Lukas Amupolo

Dha zi kep. 2

he .'' Joh. 3:16. Eeno shili ohole onene yi vule ayihe yi wetike naamyoka yaa wetike.

Ethimbo lyetu olya pumbwa Ohole ya-Kristus: Aantu oya hala okusinda uu-yuni mbuka noondunge dhawo, noonkondo dhawo niikondjitho ya topoka nohole yaKristus, osho taa dhiladhila otaa thiki mesindano, ihe paushili itaa sindana shila ya sindwa nokuli. Mboka ye ekelehi ohole yaKristus otaa kala ye na omupya nomuuyuni mbuka nomumboka tau ya. Ihe mboka taa pangelwa kohole yaKristus oyo aanelago shili. Ehol.3: 12. (Oshike) Olye ngo te tu topola moho- hole yaKristus? Tu kondjeni twaa sindwe kuuwinayi ihe tu sinde uuwinayi onuuwanawa. Ohole onene shili yi vule ayihe. Ihayi itanga, ihayi tuwalala, ihayi nyanukilwa uugoyoki, ihayi sefupa, ohayi siikile ayihe, ohayi idhidhimikile ayihe, ihayi dhimbulukwa ealulo lyuuwinayi ohole kayi hulu po nando: 1 Kor, 13:

Eimbjilo 375

Omumwameme meitaalo  
Titus Ngula

"OLYE TE TU KANDULILE PO EMANYA?"

*Ndika olyo etumbulo lya tseyika nawa kAakriste ayehe muuyuni. Aakiintu mbe- yaka ya li taa ipula mondjiila kutya olye te ke ya kandulila po emanya pombila, oya adha lya kandulwa po nale.*  
Mar. 16: 1-4.

Ano natse otulyeni pethimbo ndyoka oyendji tatu ipula ngeyi kutya olye te tu kandulile po emanya? Otu li pethimbo ndyoka oyendji tatu limbililwa oonkondo dha Kalunga. Pethimbo ndika oyendji katu li we komuthika gwtu yene. Pethimbo ndika omahalelathano guuwinayi ogo ogendji. Pethimbo ndika oshinima tashi kenyanathana komayego. Pethimbo olyo tuu ndika oyendji tu wete eyamukulo lya Kalunga lya kala ko, na unene sho tatu ipula olwindji kutya: "Olye te tu kandulile po emanya?" Aanamagumbo muudhigu wawo momagumbo otaa ipula, olye te ya kandulile po emanya. Aapangi, aalongi yoosikola, aakuluntu momagumbo noyendji yi ili noyi ili otaa ipula ngu te ya kandulile po emanya.

Pamwe owa kuthwa ookuume koye komukalo inoogu hokwa, pamwe yamwe oya kanitha omalualo gawo pamukalo inaaye gu tegelela, nopamwe iinima monkalathano yesiku kehe inayi enda we ngashi wa li wa tegelela. Onkee olwindji tatu ipula ngeyi, "Olye te tu kandulile po emanya?" Ihe nando ongeyi, tu dhimbulukweni kutya aalangeli aana- nkondo pombila ya Jesus inaaka vula sha sho emanya lya kandulwa po. Omata- tati gawo inaaga kwatha we sha! Oonkondo dha Kalunga pethimbo ndyoka odha holoka sha yela mo nawa. Onkee natse wo tatu kugu onkugo ondendee tatu ti: "Woo, olye te tu kandulile po emanya?"

Ino limbililwa, ngashi lya li lya kandulwa po, osho tashi ka ningwa nopethimbo ndika.

Mbili ino kanitha  
Moluhodhi tonata  
Nand' uudhigu ngey' u na  
Mwenyo nogwa yemata  
Inekela Omuwa ngaa  
Oye te ku hupitha.

AYEHE OYA HALA ONGELEKA  
YAWO YI KALE YI NA UUYELELE  
(OMAKENDE)

Oomeme

V. Amadhila .....	R 12-25
Selma Nehale .....	12-25
Anna Amadhila .....	12-25
Evelina Kuwa .....	12-25
Hileni Mbeeli .....	12-25
Rauha Nashandi .....	12-25
Sesilia Munkawa .....	12-25
Kaarina Angula .....	12-25

Kumwe R 98-00



## OKWA LONGA OSHILONGA SHOUDIAKONI

Omushamane Stefanus Sheuyange okwa xulifa oweenda waye moukokele weedula 51 moshihakulilo shOnandjokwe, omafiku eshi a li 15-10-1975. Nakufya tate Sheuyange okwa dalelwa muAngola, nopo nee va dja ko veu ya oku kombada yondama pEenhana opo a kulila.

### HAMAHAMBELELO SHILA OMAINDILO HAGA UVIKA

Osho ngeyi uyelele weni nau yele montaneho yaantu, ya mone iilonga yeni iiwanawa no ya hambelele Ho yeni yomegulu. Otekisti ndjika okwa li ya pulakenwa kongundu yaantu ye thike lwopo 500, kwa li ya gongala pOkangili, newi olya uvika tali ziilile moshigakano, sho omuuvithi gwomelongelokalunga tate Filippus Imene, a popi.

Omuuvithi ngwiyaka, okwa tsikile nokufatulula otekisti kutya: Uyelele owa shitwa tango mangu inaaku shitwa nando oshishitwa shilwe. lishitwa oya shitolwa muyelele, ihe natango uyuni owa tsikile momilema dhokomwenyo. Aantu ohaa longo muyelele wetango, womwedhi nowoonyothi. Aanandunge naanongo oya fatulula nokutya etango, omwedhi nenge oonyothi kadhi na uyelele mudho dhene. Ayihe ohayi pewa uyelele mbuka ketango.

Uyuni wo inau vula okukala u na uyelele muwo wene. Uyelele wuyuni otai zi kulesus Kristus. Ngoka kwi ili noke li muJesus oye ote ende nota longo momilema - onkene uyuni sho inau taamba omuna gwaKalunga, owa kala tau ende momilema.

Kalunga ina etha Aawambo ya longe noye ende momilema sigololo osigo. Okwa tumu uyelele wevangeli, mboka wa thikithwa kaatumwa mevi ndika nowa thikile mpaka mOmandongo. 9 Juli 1870.

Uyelele mbuka owa taambwa ngiini muka? Natango ope na mboka taa ende notaa longo ye li momilema, oshoka inaa taamba uyelele mbuka. Momagumbo nomomahala ogendji, mokati kaantu itaku uvika nando omahambebelele omolwiiilonga yaantu iiwanawa andola. Olwindji otaku uvika owala omagalikano. Kalunga ta galikanwa opo a galulule omuntu miilonga yomilema.

Mboka ya taamba uyelele mbuka uyuni owa tala oyo aainingithi, aamatemba, ookakayiwa niimbudhi. Ihe Jesus okwa hala tu hambelithe Kalunga kaantu mboka taa tala iilonga yetu iiwanawa.

### YA MANGULULWA

Omusitagongalo Sebulon Ekandjo amushanga gwoshifo "shOmukwetu" ngoka a li a tulwa mondholongo okuza eti 22-8-75 sigo eti 31-10-75, okwa mangululwa pamwe nooyakwawo mbaka.

Mr. Mulanduleni Itope  
Rev. Hosea Nampala  
Mr. Skinny Hilundwa  
Mr. Erastus Asino  
Mr. David Katuta  
Mr. Isak Shoome  
Mr. Jason Nangombe  
Mr. Nangolo Mutota  
Mr. Vaino Shikwambi

Ayehe mbaka oya kwatelwe paveta R 17/72 yEpangelo lyOwambo noya mangululwa inaaya falwa mohofa okutamanekelwa ondjo yasha, ndjoka ya li ye ya kwatitha.

Omushamane ou eumbo laye okwe li tungila kOkakwena mOndonga meongalo Epembe, oko a kala nokulonga oshilonga shaye ongomudiakoni meongalo eli, omushamane Sheuyange okwa fiya po omufiekadi nounona vaye vatanonakamwe.

Ovakwaneongalo olo nookaume novashiinda vaye, eshi va kala moshivilo shaye, ova kala nokutumbula ngaha: "Eongalo nomikunda odo dopomudingonoko opo, oda kanifa oshitoo osho sha li shi yadi ombili. Walye yo tuu ngenge poshilongo opo tapu kamonika omunhu oo ha pangelwa kombili ngashi ye". Omulumentu winya okwa fiya po oshilongwa shinene noshi nondilo pomukunda winya osho "OMBILI" "Omwene ota ti mokulonga ouwa inatu loloka, osheshi efimbo letu okukala apa olixupi." Omunelao oyou ta diinine fiyo exulilo.

*Simon Sheuyanae*

### OMATUMO AVALI A HENGUMUKILA MUMWE

Etumo laSudan netumo laNorwee o a longwa efimbo lile muCameroun, paafa okwa ninga ongeleka imwe oyo tai itanwa Ongeleka yEvangeli paLuther muCameroun. Eshi osha dja opo eshi Epangelongeleka olo kwa li la ongala muNgaundere shomuCameroun la tokola ehengumukilomumwe lomatumo aa avalali ninge ongeleka imwe.

Epangelongeleka eli ola hoolola omufitaongalo Rev. Joseph Medoukan a kale omuwiliki, (President) manga omushamane Pierre Songasare, ta kala amushangandjai naJames Noss, omudiini woiniwe. Ongeleka ei oya ya kumwe mehongo louteologi noshu yo eefikola dOmbibeli nomoilonga aische mekwatafano nayo moshilonga eshi.

(AACC)

Oontauki dhaMozambique otadhi shuna koshilongo

Patseitho ndyoka lya gandjwa kuKomufala omunene gwoontauki miigwana yahangana ota li ti: Oontauki dhaMozambique ndhoka dhi li muTanzania odhi na okukala dha shunithwa kuMozambique. Omusamane Chefeke Dessalegn omukalelipo gwo UNCHR okwa gandja etseitho ndika muTanzania.

Osheendo shoka shotango osha li shi na okukala noontauki lwo po 21,00, ndhoka dha tumwa muKotoba okushuna kaandjawa. Omunambelewa gwepangelo lya Mozambique okwa ti: Osheendo oshitiyali otashi ka tameka okushuna omumvo tagu ya muJuni nenge muJuli.

Aamozambique ayehe mboka ye li muTanzania nenge kiilongo yilwe, otaa vulu okugalukila koshilongo shawo, shoka sha mono emanguluko konima yekondjo lya-sho okukondjitha uupika wopakoloni wAaputu mboka wa li mo, omukalelipo osho a ti.

AACC



## EWANIFO LOMHANGO NONGUNGA YOKOMWENYO

Manga Jesus novahongwa vaye va li mondjila tava ende, omulumenhu umwe okwe uya kOmwene ta lotoka nokutwa eengolo koshipala shaye nde ta pula "Omuhongi muwa ondi nokulonga shike ndi mone omwenyo waalushe?" Mark. 10: 17b.

Apa Jesus okwa li a hangika ku umwe omudiinini melongelokalunga laye, ndelene okwafa inaa likola ombili yokomwenyo, onghee a ya kOmwene nepulo laye olo la dja melyuudo lomeni. Ova-longelikalunga vahapu osho va kala ngaha moudiinini wavo woinima yopauKalunga, voo tava limbililwa efiku nefiku shaashi elongelokalunga lavo olopamhango.

Omolweliyuudo la tya ngaha omunyasha winya a li oshipuna, ina mona nande etulumuko koipala yovanhu shaashi okwe li tanga, kutya ye omuwani fi womhango yaKalunga, ndelenee oshayela enyamukulo laye olo a pewa kOmwene ole mu ningifa okamutima kanini, osheshi ye okwa li e na olupuna uhapu.

Omunyasha ou okwa li a wanifa ehongo lofatarisai nolovanongoramata, ehupifo laye otali kwatafanifwa noilonga yaye, kali fi lomeitavelo nolomefilonghenda laKalunga. Eshi osha yela kutya exupifo eli lomefilonghenda otali nyengana nomovaitaveli vefimbo letu. Jesus eshi a pula omunyasha ngenge oipango oku i shi, omunyasha okwa nyamukula nounhwa, shaashi ota diladila ye omuwani-fimhango, ye ina koneka eshi ovanhu vamwe va fya ondjala nenota puye vamwe va fya onghai vehe na oikutu, shiimba vamwe e va nyeka oinima yavo opo a taneke eliko laye nonghedi oyo yomhango.

Omunyasha ou okwa konga Jesus nomadiladilo oo mokutala a fa a wanifa oipango oyo yi na sha nonghalo yomunhu, ngeno, ndelenee ehongo lovanongomhango ola nyengwa okufikifa omunyasha ou monghalo ya wana. Ndelenee ehongo laJesus alike la tenheka oshikalimo shomoipango poluhaela, nomolwaa-shi omunyasha ou ina hafifwa kenya-mukulo laJesus. Omunyasha ou kakwa li e mu hole pamhango nopamanyolo. "Oye tuu ou e tu longekida yo tu kale ovayakuli vehangano lipe, halondado, ndelenee lomhepo, osheshi ondada tai dipaa ndelenee Omhepo, otai yandje Omwenyo." 2 Kor. 3:6.

Ondjila ei yOmwene keidjuu nande, ndelenee koshipuna oya finana nosho yo ou teli limbililwa meitavelo otai ningi yidjuu molweitavelo olo la nghundipala momunhu. "Elongelokalunga la yela noli he nedilo lasha koshipala shaKalunga naTate oleli: Okutalela po eefiye

## ONDA ITAVELA OMWENE WANGE

Jesus onde mu itavela, osheshi okwa longelange oinima yinene.

Okwa kulila nge mefyo.  
Okwa mangelula nge meti lasatana.  
Okwa longela nge ondjila yokuya moshilongo shomeulu.  
Okwa paka nge meengudu dovayapuki.  
Okwa ninga nge omufyuululi weumbo laKalunga omunamwenyo.  
Jesus ouyelele waalushe  
Jesus omuna woshili  
Jesus omunanghenda  
Jesus oye ondjila noshili  
Jesus omunaenghono adishe

Jesus oye enyumuko noshili, oye ofifiya yomeva omanamwenyo.

**Paulus Hamukwaya**

## OMADUUMBO NA V.V.O.

**Etokolo kutya epangelo lomaduumbo kali na fiku nali tambulwa moukumwe woiwana younyuni, ola ningwa nomawi 100 mokangudu koinima you-polotika ka V.V.O. nopehe na omukondjifi.**

**Oilongo 8 aike ya anya okuyandja ewi layo i hoolole apa ya ama. Etokolo eli otali imbi eduumbo keshe liha ninge oshilyo mo V.V.O. nande li kale tali tiwa ola mangeluka.**

## LIKOLELELA OSHESHI OOVE OWANGE

Omukriste omukwtu, Jesus ote tu lombwele: Likolelela, osheshi aame onde ku kulila nonde kwiifana edina loye oove owange. Omukwtu ou li ngahelipi neifano loye mefimbo lopaife? Oto likolelele tuu muJesus ou ta ti. Likolelela, ino tila? Ngenge hatu kala tu na omukumo muJesus Kristus ofye ohatu kala twe mwiinekela shili, ohatu shiiva ofye ovaye.

Omukriste keshe nomefimbo eli lidjuu, u li moudjuu mouyehame meemhango, ikolelela, osheshi owa kulilwa kuJesus nokwe ku ifana ukale waye. Ou e ku kulila okwa hala u kale omunhu waye. Efimbo tu li na paife olo etumbulo eli tali wanifwa, LIKOLELELA. Omuprofeti Amos ta ti:

Omunanandunge ota kala nokumwena koshipala shaKalunga osheshi oye oku li mefimbo lii.

LIKOLELELA. Aame onde kukulila.

Oshike nda limbililwa nge ondi na Krisus. Olye ta dulu nge olye ta nyeke nge eulu Kalunga nOmona ovo ve li pa nge.

Salomo Namunyekwa

novafiyekadi momaudjuu avo, nokuliamena omunhu aha nyatekwe kounyuni".

Kornelius Nahishihanae





**Omuyakupangi meme Maria Nekongo e lipyakidila nokumangulula omuhakulwa, meme Nekongo ota hafele oshilonga shaye osho a ifanenwa kOmwene.**

#### OMBILIVE KOMINISTELI VOSTER

Omusitagongalo Carl Mau, amushanga omukuluntu gwOngongahangano yAakwaluther muGeneva, okwa nyolela ombilive yekumagidho koministeli yotango ya S.A. omusamane J.Voster.

Omolwomakwato gaantu oyendji ga ningwa muNamibia okutameka Auguste nuumvo nokweedhilila moondholongo ethimbo ele pwaa na ompangu yasha, Amushanga mombilive ye okwa ti:

"liningwanima mbyoka ya kala tayi gumu Ongeleka dhi li iilyo yetu muNamibia, otwe yi landula noluhodhi olune. Mokukambadhala kweni okutsikila nokatongotongo osha yono po uukumwe wOngeleka mboka tau lalakanenwa.

"Omukalo gwokweekelahi omaindilo goopaasa dhaanashilonga aakwiilongo dhi kale dhi na oonkondo ethimbo ele, o-gwa yono eyakulo niilonga yOngeleka.

"Omukalo gwokweedhilila aasita moondholongo naawiliki ooyakwawo yOngeleka moshilongo, otashi thiminike omadhiladhilo getu ge shi tale kutya Epangelo lya S.A. olya tunga nowino omukalo gwaa shi okwiidhidhimikilwa okuhepeka Ongeleka. Shika osho okuyona ano uukumwe wOngongahangano yAakwaluther."

Ombilive ndjoka oya hulithwa nomatumbulo ga tya ngeyi.

"Otatu ku indile u ninge po sha shono tashi ka etela Oongeleka dhomuNamibia nodhomoshilongo shoye ompito yoku uvitha evangeli lyomwenyo pwaa na omaimbo."

Ongeleka onkwaevangeli paLuther ya hangana muNdowishilanda (VES), nayo wo oya holola oluhodhi lwayo kiiningwanima yaNamibia. Pahokololo ndyoka lye yi gandja oya ti nokuty ekwato ndika lyaantu yOngeleka muNamibia otali pendutha ashike uutondwe neshundulo tali ka fala iilyo yOngeleka miilonga yilwe yiuhuna, mbyoka tse tatu ka nyengwa oku yi kelela.

"Ngele nani ou na elalakano lyasha lyombili, otatu ku indile ano neitulomo u kelele aapolosi yoye naakwiita yaa hepeke we aantu osima."

Ehokololo ndika lya shainwa komuwilingeleka dr. Van Stieglitz olya ti nokutya otaku ningwa eindilo kEpangelo lya Ndowishilanda li longithe omagano galyo okuguma Epangelo lya S. Afrika moshinima shika.

(Ekumeniese informasie)



Epangelo laKaputu la yandja emanguluko mu-Angola, eshi osha ningwa paudaneke olo la yandjelwe kutya: edu eli oli na okumanguluka meti 11-11-75. Eshi osha wanifwa nosha ningwa shili. Ndelenee oupyakadi ou li opo, eshi eengudu odo nhatu domahangano ovakondjelimanguluko ngashi MPLA, FNLA na UNITA fiyo omefiku olo lemanguluko inava twa kumwe, omalidango onghee taa pwakele pokati kavo.

Paradio otaku tiwa MPLA okwa tulika elapi eshi tuu Kaputu a kulula ko laye. Eshi oshi li nee ngaha kutya emanguluko eli inali pewa ngeno ongudu imwe yomwaadi nhatu, ndelenee ola yandjwa kovanhu aveshe ovakalimo moshilongo eshi.

#### OMAFUDO E NA OMALALAKANO MAWA

Ngaashi tu shishi nawa kutya efudo mokati kovanashilonga osho oshinima shi uditike ko nawa, kashi na nee mbudi kutya efudo lomwedi ile olomafiku, shimpa tuu tali kala li na elalakano liwa, momafudo a tya ngaha omwakwatelelwa oinima i lili noku lili, imwe oiwa na imwe oyi, imwe otai tungu na ikwawo otai tungulula.

#### ELI OLO EFIMBO NEE LOKUYOOLOLA

Eshi nee tu li mOunyuni womafimbo elunduluko, omo ounyuni nomafimbo e na oinima tayi endele mumwe, ndele omunhu muhapu oto nyengwa okudimbulukwa nokushikoneka kutya elalakano loye oliwa tuu ile olii, otali tungu tuu ile otali tungulula

Pomafimbo a tya ngaha ohatu pumbwafana tu xungile pamwe opo tu tale konima oyo tai tungu onghalo iwa nomalalakano eshi okulineekelwa. Monena otwa hala tu taleni kombinga yomafudo etu ngenge oku na tuu omalalakano e lili no elili mefimbo lomafudo oo haa dulu okulongifwa komunashilonga keshe, nokuli omalalakano amwe okwa kundja tashi ti, itaa pumbiwa va li okulongifwa mounyuni wefimbo lopaife.

Natu ulike kanini nopouxupi koinima oyo tai tu ondubo nomafudo oo e na omalalakano mawa, oyo i li momunhu ye mwene ngaashi:

i onyalo

ii ounhwa

iii okulihola

iv okuhena elalakano lasha

v okweendaula na apa itashi pumbiwa

vi okuhepeka eliko pamukalo mwii

vii okuhashiiva

viii onghalo ya nyika oushondolo

viv okuhola okulya

x okuliulika noinima ikwao yafa ei. Oinima ei aishe muyo omuna onghalo tai tu ondubo noshipopwiwa eshi, na noinima yatya ngaha oyo ne tai pumbwa okuwapalekwa mefimbo lonena.

Natu shuneni vali komutungilo woshipopwiwa shetu. Ngaashi elalakano letu olo okutala oinima oyo oimati yomunhu ena elalakano liwa. Natu ulike vali pauxupi koitwa tai holola oimati movanhu oo vena elalakano liwa, ngaashi:

i elalakano lalongekidwa nawa

ii okuninga sha pefimbo lefudo

iii okuyakula moilonga yomeumbo

iv okutalela po eenhele dimwe pamumbwe yowino wonhumba

vi okukala moyongalele yopaukriste

vii okukala meekurusus dasha

viii okukala moilonga yoye mwene pefimbo lefudo

viv okulidiinina nawa

x okulikeelela moinima yanyika eshundulo

xi okukoneka kutya ou li mefimbo lefudo nai kwao iwa ya fa ei.

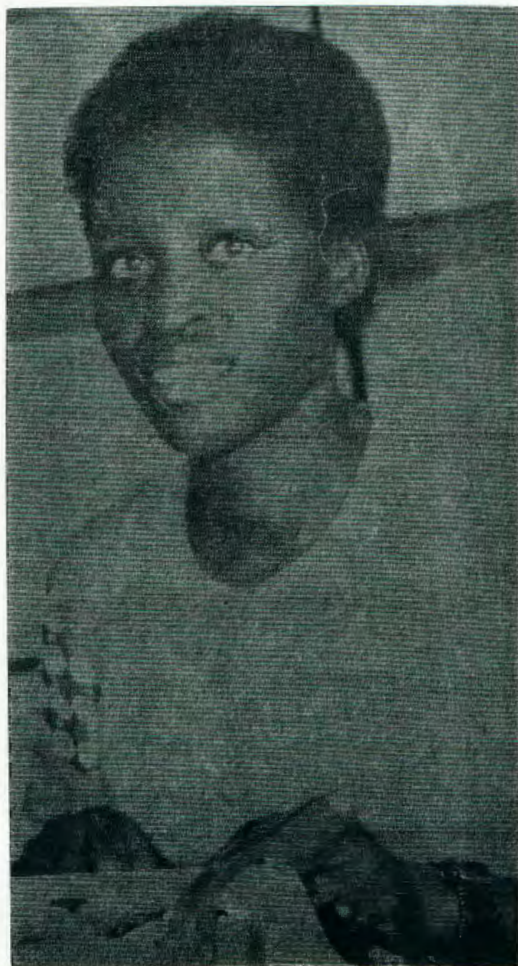
Oinima ei ngenge ohatu i longifa momafudo etu, nena ondi udite kutya kape na nande shimwe tashi ku twifa eemhata monghalo yomafudo e na omalalakano mawa. No ngenge pamwe ohatu dulu oku iwanifa, ondeli nekela kutya nena eshi twa mona endungiko la tya ngaha, ohatu di po ngaho tu na owino washa moimati oyo tai wapalele omafudo e na omalalakano mawa.

Aune T. Iyambo

Okangudu ke lilepo oimaliwa yaNamibia mOiwana yahangana oka indila ku ningwe eongeele lomuvalu woimaliwa R90,000.

Oimaliwa ei oyokulongifwa 1976 momhumbwe nge tai holoka po okupangulifa omahangano taa twikile natango okupindika oipindi na S.A. tai di mu Suidwes-Afrika.

Eshi osha holoka moshifo shomuJohannesburg "The Star" 16/10/75. Etokolo ola ningilwe 27 Septemba 1974 koraata yaNamibia nosha kolekwa yo mOiwana yahangana omapangelo oilongo nomahangano a pangulifwe epindiko na S.A. koilokolomwa ei tai di mu Suidwes-Afrika. Etokolo eli ola ningwa okunengeka Epangelo la S.A. li yandje emanguluko ku Suidwes pamukalo wombili.



Aune T. Iyambo

Kape na fiku nakufikwa medjoonoko lomikundu doshilongo eshi fimbo Swapo neengundu dikwao doupolotika moshilongo ina di ya mo meenghundafana donakwiwa yoshilongo. Eshi osha tiwa komuwilikingudu wa United Party, omushamane Sir de Villiers Graaf.



## ONKUGO MEKONDJO

1. Tate gwomegulu tu uva  
Tal' oshigwana shoye nena  
Omukumo mekondjo tu pa  
Ohole yoshili mutse gandjela  
Tu kondje moshili ha miifundja  
Nand' omutondi ta kondjitha  
Omutenya nuusiku kee na egundjilo  
Oshili mOngeleka yoye a dhipage ando.

3. Tate gwomegulu tu uva  
Tal' oshigwana shoye nena  
Ongeleka mekondjo lyoshili yi li  
Nand' omutondi ta kondjitha ita sindi  
Omwaalu gwaapongekwa naadhipagwa esiku kehe tagu lundu  
Tal' oshigwana shoye omagongalo ogendji omaputu  
Tal' egongalo nand' omumati gwoye kee mo

## OMATSEYITHO

**Oohema dhopausita, oothingo  
noombandi dhadho ngashingeyi  
otadhi monika mOstola yomambo,  
pOniipa.**

**Ohema otayi gu R 11,85  
othingo 0,80  
ombandi 0,25.**

**Mositola ndjika omuna wo egalika  
kano lyomunashilonga kehe lya  
tungwa nawa lela, otali gu R5,00.**

## NATANGO OONKUNDATHANA MOVENDUKA

Oshigongi shokukundathana onakuyiwa yevi ndika osha tameke natango eti 10.11-1975 moshilando shepangelo mOvenduka. litsa yi thiike pwiiheyali oya tulwa melandulathano lyiikundathanwa.

Epangelo lya S.A. pamwe naawiliki yomavigumbo muNamibia oya tsikile oonkundathana dhokweeta po omutompo momaudhigu gevi ndika. litsa yimwe tayi ka kundathanwa ongashi:

\* Etumwalaka kiigwana ya hangana nokomangelo guuyuni gaa idhope miinima ya Suidwes.

\* Okukonga eyamukulo miilonga yokatongotongo.

\* Etungo lyomagumbo

\* Okukonga uukwashigwana wa Suidwes-Afrika

\* Ombaye (Walvisbaai) ndjoka ya talwa natango kutya oshitopolwa sha S.A.

\* Oimageelo ngoka ge na okuningilwa omahangano nenge aantu yontumba mboka taa sikumudhile aantu okuninga iipotha nenge okulongi-tha uukolokoshi. (Advesrtiser 6-11-75)

Oonkundathana ndhika dha tamekele okuza Septemba numvo, odha tsikila oshikando oshitatatu, ihe inadhi yalulwa kligwana ya hangana mbyoka nayo tayi kongo ondjila yokumanguluka kwevi ndika.

2. Tala tate muupongekwa mondjedhilo ta lili  
Meme nosho wo aanona megumbo oondila dhowala  
Mondjedhiliilo etegameno tate kee na Ondjimbo yoluhodhi ti imbi  
Unake taku shile ndje?  
Omuwa tu sil' ohenda

4. Omukumo kuyo megalikano pameka.  
Ekondjo lyoye ekondjo lyetu  
Ehepeko lyawo olyo olyetu wo  
Eso lyawo eso lyetu  
Esindano lyawo esindano lyetu  
Katu na elimbililo mekondjo ndika  
Esindano lyetu lyoshili muNgoye tu na  
Omuwa tu sila ohenda.

Nikodemus Ntinda

## 10 YA YAPULILWA UUSITAGONGALO

Petameko lya Novemba numvo mOseminali yuusita mOtjimbingwe omwa yapulilwa aasitagongalo aape omulongo yOngeleka yaVelkswa. Aasitagongalo mbaka, yatatu yomuyo oya zile muELOK. Olwo lwotango mehistolli lyoseminali ndjoka yuusita sho ya hangana kumwe ya (ELK na ELOK) 1963, aalongwa ya yapulilwa pamwe moshilonga.

Aayapulwa yaali yomuELOK, Onesimus Shanyengange na Immanuel Hainghumbi, ayehe taa langekwa mOshitayingeleka shUukwanyama, inashi yela manga kutya omomagongalo geni taa langekwa.

Omyayapulwa omutitatu, Josef Namutenya gwomegongalo Eheke, okwa langekwa omusita omuyakuli megongalo Nkurenkuru, mOkavango. Omukulukadhi gwe Aino, naye wo a longwa nokwa pita osikola yuusita, okwa langekwa a kale omuwiliki gwasikola yOmbimbeli megongalo ndyoka.

Omaindilo 13 gaalongwa aape okutameka 1976 mOseminali ndjoka oga ziminwa nale kEpangelongeleka muELOK. Yatatu Aakiintu.

MEngela namo wo otamu ka tameka ongundu onkwawo yaasitagongalo pazimino lyEpangelongeleka.

Aalongwa 9, ayehe aayevangeliste otaa ka kala oomvula mbali melongekidho ndika mEngela.

## ETSEYITHO

### IIHAUTO TAYI LANDITHWA PO

FORD CORTINA STATION WAGON SHOMODELA 1974 OSHI LI MELANDITHOPO. SHA ENDE OOKILOMETA 29,000 NOSHI LI NAWA LELA. OTASHI PULA R 2.800,00.

VALIANT SAFARI STATION WAGON SHOMODELA 1973 SHA ENDE OOKILOMETA 51,000 NOSHI LI NAWA. OTASHI PULA R 2,500,00. NGOKA WA HALA SHIMWE SHAAMBIKA MONATHANA NOMUSAMANE OLLE ERIKSSON PONIIPA, OTELEFONA 41, ONDANGWA.

## OMUKWETU

Oye oshifo shOngeleka onkwaevangeli paLuther yomOwambokavango. Ohashi nyanyangidhwa mOniipa. Omukuluntu gwoshifo omumbisofu dr. Leonard Auala. Amushanga Rev. Sebulon Ekandjo.

Ondando yoshifo kemumvo muSuidwes nomuAfrika althe R 2,00 kombanda yomafuta R.4,00.

Oondando nomambesite lo naga tumwe kOmukwetu Oniipa; P/B. 2013, Ondangwa.

Omatseyitho agehe gomuntu mwene ohaga futlwa kumwene.

OWAMBOKAVANGO CHURCH PRESS,  
PRIVATE BAG 2013, ONDANGWA S.W.A.

9270