

# OMUKWETU

Registered at the General Post Office as a Newspaper



## OVAPIYA VOMWENE

Oshoongalele shovafita vomuElok mOngwediva osho sha li ko  
eshi omafiku a li 8 fiyo 12 a Septemba neudo

**OSHIVILO SHETUMO KONDOBE**

Omaongalo omOshitaingeleka shUukwanyama okwa li a ongala eti 30-31.8.75 okudana oshivilo shefiku Ietumo mOndobe.

Oshivilo shoovene sha hovela nomalandifo oinima ya etwa komaongalo potundi onhihamano komatango. Omaongalo amwe okwa li shili elitula mo mokwetelela oinima i landifwe po oimaliwa i ye metumo.

Otwa li tu na oimbale, omaxuku, omatanga, omavanda noinima ihapu imwe i lili ngashi oikutu noikombo.

Oxungi oya hovelifwa komufitaongalo womOndobe neekoor oda li tadi udika nawa moipeleki ngashi ovakaumbo nongudulwiimbo yeongalo. Moxungi omwevangeliste ou ha longo ponhele yOshitaingerki shetu nophonhele yaye, okwa hokolola nghe oukriste wa kula movakwanghala.

Ongula yeti 31.8.75 osha li shiwa okutalwa eshi elongelokalunga la ningwa kovavita vane: J. Nantinda, F. Nghihlwa, J. Hamulungu, M. Mundjele, Eudifo oia li letu kwata atushe olo la ningwa komufita J. Haufiku. Elongelokalunga lounona neudifo pamufika wavo ola ningilwa komiandi kovavita A. Hangula I. Mungungu.

Oshivilo shoovene osha ka twikila komiandi, oko omanghete a ka nyika ne, ongoma nouyaya nomaketala noufiloli vayauka moshihakulilo shomEngela mewiliko la meme wa Sonia, ei aische oya li tai hambelele Kalunga eshi Evaengeli la fika. Ngeni oko wa li ngeni wa pwilikina: Jona inda ku Ninive".

Komiandi omupashukilishitaingeleka a udifa eudifo loshivilo, eshi ehovelo la ningwa komulungi tatekulu A. Nghihafa. Ondjokonona yEvaengeli nghe la tandavela ya hokololwa ku tatekulu V. Kaulinge, a hokolola "Otwa kokola". Ehokololo eli ola li letu kwata atushe noshe tu pa omukumo okutwikila omahambelesho eshi Evaengeli la fiku.

Omulongi Tk. J. Nghipandwa a twa omukumo tu hambelele nashi tuna, oshivilo nashi lilongekide shi tule mongalo yetumo oshitukutuku, nomalola asho noudjuu washo, nondilo yasho ngeni shi monike pafa mokambale kongalo.

Opa li eengudu di lili nodi lili da holola omahambelesho ado nomaimbilo. Ovangela, Ovadundja Ovandobe, Ovandola, Ohalushu, Ongenga Ongwediva oixuna eengudu edi oda li shili da vilopaleka oshivilo shetu noku tula mo omongwa.

Ovanhu ova li shili va xwama okutula oshitukutuku mongalo opo shi ye shika udife Evaengeli apa inali fika natango.

Ovanangeshefa navo oko va li tava landifa oinima yavo, nande va li tava landifa oinima yavo noku shika eengelema davo, navo fa nga ve hena efimbo loku ya komaongalelo, navo osho vevili tumbuko na R12,50 opo oshitukutuku eshi sha xunganekwa ku Tk. Nghipandwa shi monike.

Nande efimbo loovene olidjuu neendjila da li dile, ovakriste aveshe vetu oko va li va hambelele

lele Kalunga eshi etu ningila oinima inene. Kakele ashike kOvakalongo, ndele venya, shi haimbi shikwao hashilonga, naaku va kala otava mange shapama eshi ndi va shii noshito itava kala inava kupula, shashi noshito ihava shekuna.

Ohatu pandula omaongalo aeshe okwa kondja nana ngashi taa dula, vahapu ova pitilila efaneko olo kwa li a fanekelwa, okwa li twa faneka eongalo keshe li ete R10.00 ndele mahapu kape na sha opo.

Omaongalo okwa ongela nee ngaha omolu Etumo.

Ondobe	R42,56	
Okatope	32,40	oshikombo no-
ngahombwena yasho yonghadi		
Endola	23,00	
Ongwediva	20,00	
Eembaxu	26,00	ongobe yondume,
onghelo kai tonona nande ya tokola onyoka Iyalo Nghelo!!		
Engela	20,00	
Ohalushu	20,00	
Olupandu	18,00	
Ongenga	16,00	
Kongo	16,00	
Omundaungilo	15,00	
Edundja	10,00	
Okalongo	**	
Eenhana	**	

R268,96 Ongalo ya u-

mbwa moshivilo R100,01

aiche kumwe oya ninga ngaha R368,97.

Ovahakuli vomEngela navo inava hala okufyaala po onghe ove li tumbako neeranda R300,00 oyo vei diladilila omutumwa wavo. Kalunga ota longelwa osheshi oye mwene ta i meemwenyo dovanhu vaye opo va dule okukamutuluka, oye mwene ne mu pandule.

Ovakriste ovaholike vomoshitaingeleka shetu, ohandi mu pandula unene omwa longa oshilonga shinene.

Oimaliwa otai ka longa nee ngaha:

Oshitaingeleka oshi na omwevangeliste ta longo ku Kongo oshi na omulongi ha longo ofikola yeshasho movakwanghala ku Kongo natango.

Hamushanga molupaleongalo kOnamayaka Angola, nomulongi umwe natango mu Angola, otu na omulongi wounona ha longo kOkalanga Angola, ou oha futwa kovahongifikola paudafano lavo.

Omwevangeliste umwe ha futwa kovahakuli mEngela e li ku Angola.

Omulongi umwe kOshangalala Angola ha futwa kEnongelo loyayakuliongalo mEngela, omwevangeliste umwe vali kOshangalala oha futwa kovanyasha, nomutumwa umwe natango ha futwa kovanyasha ku Kongo.

Ondjabi yovanhu va tya ngaha aische kumwe R164,00 komudo. Oimaliwa ei hai pitifwa kOshitaingeleka omudo keshe, kai na odjo pamwe pelili, oha di meengalo odo hadi ningwa momalongelokalunga moyoondaha imwe imwe momudo, nohai di yo meeshali tadi yandjwa kovaitaveli ngashi eemwenyo davo tadi ti: nomoyoolgelwa komaongalo moshivilo shetumo.

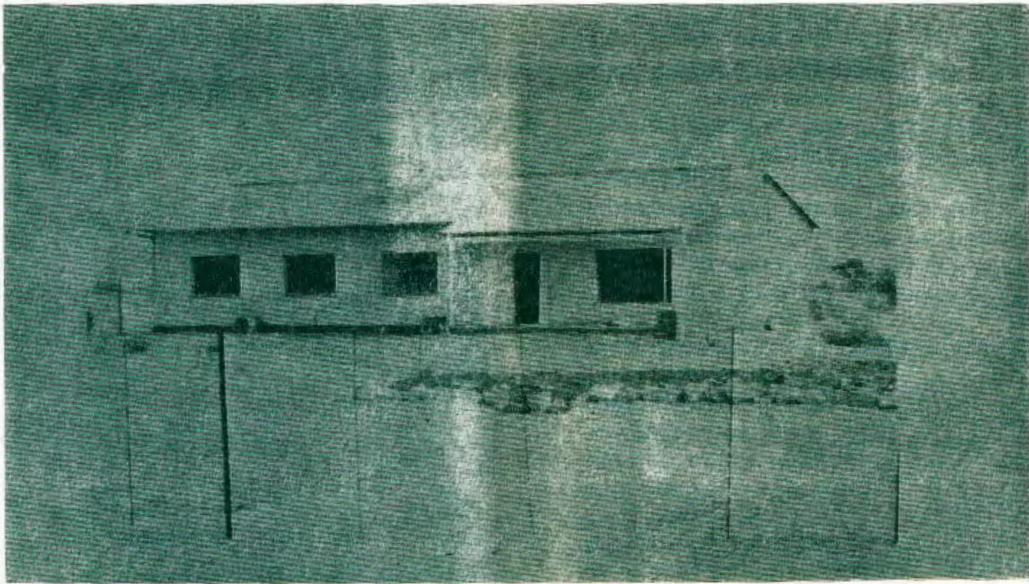
Onghe ovamwameme nye ovaholike Kalunga okwe tu pa oilonga tu tandavelife Evaengeli fiyo okominghulo dounyuni. Mat. 24: 14. Tu longeni tu yeni fye vene, tu ilikaneneni Etumo:

Oshike mwa mwena aholike yOmuwa Taleni ethimbo oye endelela Etango Iya yi mo milema nodhe ya Oshike mwa mwena omuteny' aguhe Koor: Uyun' auhe nokooha dhawo Ongendjo dha ithana ko Matuka to ithanwa inda moshilonga Mwa i thanwa amuhe nena wo.

F. Shikomba Omupashukili

Fye atushe ohatu ku indile u tu kwafe momaudjuu omo tu li mo pefimbo eli lo-shili yoye tai fitikwa, ndele efiku loiponga u tu longe okutumbaleka edina loye la fimana. Kalunga Tate, otu na eendaka dihapu oku ku lombwela, ndele ohatu yandje ashike oshiwana shoye, meke loye, osho yo Ongeleka yoye koshipala shoye. Opo ne fye vene ohatu wu pedu nokutwa eengolo koshi yee-mhadi doye nde hatu ku ti: Tate yetu meulu, edina loye nali yapulwe.....

Amen.



Egumbo Iyomundohotola T. Iuhwa

## Inda koshihakulilo fimbo ombuto yomukifi inai eta enyonauko linene molutu

### Epango komikifi edi:

Kombinga yovakulukadi ovo va teelega ove na okuya kekonakono lovakulukadi. Otava kufwa ohonde petameko lela, manga edimo inaali kula. Mohonde omo otamu konakonwa nawa nomashina, notava mono ombuto ovo vanini. Omukulukadi ta lombwelwa kutya mohonde yaye omu na ombuto yomukifi oo. Nota shivifilwa kutya pamwe nomushamane waye otava pewa ovenda omafiku 7-10. efiku keshe. Ngeenge tava diinine nawa epango, aveshe otava mono ekwafo la wana nokomesho yo.

Ngaashi twa ti kutya omikifi edi otadi tandavelifwa alushe koluhaelo, nena otu na okukendabala ngaha, vapangwe aveshe omushamane nomukulukadi opo paha kale umwe a hambata omukifi.

Itashi kwafa sha ngeenge umwe auke ta hakulwa, manga mukwao ta kala ina hakulwa. Aveshe otava hakulwa nokudiinina omalombwelo oo tava lombwelwa komundohotola noko-vapangi.

Ndele nande tu na ngaha oipangelo omo hatu mono ekwafo okuhakulwa nokuveluka komikifi edi, onawa unene ngeenge hatu kondjo manga inatu kwatwa komikifi. Kokutya keshe umwe a dule okulidiniha aha ye moluhaelo, manga ina hambolwa.

Na teelega ohombo, nde te i diinine nawa. Aha ye pondje yohombo, opo ta ka likola omikifi da tya ngaha. Ndele ngeenge pe na oo ta i kondje yohombo ota eta omikifi edi meni lohombo yavo.

Ndele oshinenema okulyaamena komikifi edi osho eshi. Tu diinine oshipango oshitihamano, osho tashi tu kelele tuha ye moluhaelo. Ngeenge tamu diinine oshipango eshi nyee nomuhomboli, ile omuhombolwa waye, kape na nande omhito okukwatwa komikifi edi.

Omikifi edi oda hapupala nokuli nenghono paife mounyuni, ndele eshi osha dja apa, kutya pefimbo lopaife etilo Kalunga kalipo. Itatu tila nande okunyona koipango yaye. Mokukalamwenyo omunhu ita indikwa nande keendjovo daKalunga. Ota pangele olutu laye noku li longifa ngaashi a hala.

Mwaashi otu na yo okushiiva kutya, olutu loye olo otempeli yOmhepo lyapuki. Ngeenge tonyono nalo, dimbulukwa kutya, oto hanaunapo otempeli yOmwene woye. Tu kendabaleni okupangwa diva omikifi edi, tu kendabaleni okudiinina oshipango oshitihamano mokukandula po oluhaelo.

Mokukala mekondjo alushe ohatu pumbwa okupula eenghono kuTate Kalunga. Noye okwa udaneka oku tu kwafa shili ngeenge hatu mwii-ndile nelinekelo nokuliyandja kuye.

### Okandongo: (Sifilis)

Oko omukifi womoluhaelo, nohau tandavelifwa naana koluhaelo. Omunhu ota dulu okulikola okambuto oko kaniingholi taka di momunhu mukwao, ngeenge va nangala naye. Okambuto oko haka tandavelifa ohaka ifanwa "Treponema Pallidum". Oko okanima kanini ihaka monika nande nomesho.

Okambuto oko otaka i molutu taka pitile moshipa moyunino naapo yo pe na oshipute. Taka ende mohonde notaka i fiyo omoshidalelo komukainhu. Notaka tameke okunyonauna oushitwe womunhu.

Ngeenge nee omukulukadi ta tameke okuninga omufimba, nena otaka i fiyo omohungwa, notai tameke okunyonauna. Shamha ya nyonauka, oshiponga otashi holoka kokaana, shaashi onhungwa oyo ya fimana mokukala kwokaana manga ka li moshidalelo sha ina.

Omo taka pewa oikulya, taka fudile mo ohipi, noyeekekwashi aische tai ende omo noituningifi aische yolutu taka pewa ku ina tai diilile medingoloko lohonde. Ndele ngeenge ya nyonauka, nena oilonga aische oyo oya kanapo. Okaana otashi dulika nokuli ka fye, nedimo otali umo nokuli.

Otashi dulika naana omukulukadi a ninge omadimo aeshe nande avali, ndele aeshe okwa wamo omolwomukifi ou. Ile edimo otali kulu nawanawa, nokonima okaana otaka dalwa ka fya, ile inaka kola. Omukulukadi ota kanifa okolele wolutu, ile okaana ka dalwe yo ke na omukifi ou.

### Oshinena: (Gonorree)

Osho yo omukifi womoluhaelo ngaashi okandongo. Ohau tandavelifwa kokambuto kanini "Gonokokkus". Okambuto aka taka ende pamukalo ngaashi aka kokandongo. Ngeenge ka ya molutu, otaka holola oidiliki yomukifi ou konima yomafiku 10. Omunhu ta tameke okweehama moshinena, tamu tameke okudja otwila, kikutya oilyo oya nyonauka nai. Tete ota tameke okweehama ngeenge ta xuxu.

### Oshiponga:

Komulumenhu otaka nyonauna oilyo yomeni, notashi dulika a kale ita mono nande onunona. Unene ovalumenhu ova tala ashike kutya ngeenge mohombo kape na oludalo, nena oshiponga oshomukainhu alushe. Ahowe, apa otu na okutala keembinga adishe mbali. Nokuli tashi dulika omushamane e ete omukifi komukulukadi waye noitava mono nande onunona.

Komukulukadi ombuto youdu otai i fiyo omoshidalelo notashi nyonauka nomunhu ota ehama unene. Otashi dulika omukulukadi a tameke okuninga omufimba nota ka dala okaana taka vele omesho ile ka ninge okapofi, omolwomukifi oo ka pewa kovakulunhu vako.

N. Hamata

## OHATU FINDI NOKUFINDILILA

Kombada yedu kaku na omunhu a hala a kale efindike, keshe umwe ota lalakanene efindano, opo pakale efindano luhapu otapa longifwa ekuni neenghono, ei oyo oshili oyo hatu mono keshe efiku. Opo yo pa hangwe efindano luhapu opa longifwa ovanhu vahapu ongudu yonhumba, kaku na ongudu ihe na omukondjifi wayo, ngenge ongudu yimwe ya yi meke laikwao nena otayi tameke okukondjela emanguluko layo.

Ombibeli oya shiiva nawa okuhamanguluka komunhu, omo yo omukondjelima nguluko oo a mangulula ovanhu moupika omo va li "Kristus okwe tu mangulula tu kale twa manguluka" Gal: 5. 1. Paife ohatu mono ovanhu va shanga koikutu yavo omanyolo oo ta holola osho omunyoli eshi diladila nokwe shi teeleda, omanyolo amwe otaa holola efindano olo la teeledwa, emanguluko efindano oyo oidjuulukiwa yomefimbo keshe omo omunhu e li mo, nge efimbo la pita ile eli tali uya, nge efimbo lo-paife ile etengenekwafimbo odjuulufi ei omo i li momunhu, twa hala shi popiwe ile hatu indike shi popiwe.

Komukanka oo fye ovaitaveli twa kanghamekelwa owa kola nopehe na malimbililo nomafafaeko ae, osheshi omukangha ou ou dule aische na ashishe, onghee hano tu tungileni omalyuudo etu komukangha oo wombibeli.

## OHATU FINDI NOKUFINDILILA

Opo ovanhu va fika mefindano ohapa longifwa oilwifo omauta nomikonda, ndele pafindano letu ongaha "Osheshi omikonda davo, hado de va monififa, oshilongo nomaoko avo, hao e va longela efindano, ndelenee eke loye lokolulyo, nokwooko kwoye nouyelele woshipala shoye, oyo tuu, ye shi ninga". Ps: 44.4. Efindano eli olo okufindana momaudjuu momafininiko, momatewatewo, ondjala, oiponga neongamukonda omaudjuu aeshe aa otaa findwa movakwaneongalo mongeleka.

## OMOLWAAU E TU HOLE

Ngenge hatu popi efindano mombibeli itaku diladilwa ashike efindano lopamhepo, ndelenee ouyadi wefindano nopolalutu yo, onghee omunhu keshee okwa manguluka omolweitavelo laye. Pondje yongeleka kape na efindano nandele efiku limwe. Efindano letu ola longwa kuJesus Kristus otu na okuhumbata omushiyakano wetu mokati kounyuni ou wa dundaka.

*Rev Paulus Heita*



**Omuuvithi omusamane tatekulu Abed Kandongo ngoka ta nyanyukilwa aluhe oshilonga she sigo ethimbo lye lyuukulupe**

## ONDA KUNDANA

Moshifo shOmukwetu onomola 15 onda lesa mo oinima ihapu oyo i na nomapulo nomanyamukulo ao omushangimambo omushamane G. Toter Meyer. Ngashi naana ovanhu va nyamukula pamalyuudo avo, osho osha yeleda omunhu keshe, kutya mouyelele tuu oo e shi talela mo shi li osho naana.

Ndelenee ame oinima ei hasho nde i tala ngaha, ngashi omubishopi L. Auala e li omuwiliki wongeleka, okwa humbata eemwenyo dovanhu vahapu ponhele yaKristus mwene weongalo nepangelo kombada yedu, oo e na alushe oshisho sheemwenyo dovanhu aveshe nge omulaule ile omutilyane ile omushike, ina tongola omunhu osheshi ye okwa hoololwa kOmwene Kalunga ha komunhu.

Ovaleshi vakwetu pamwe na ame tu taleni nawa, kutya pakushikula oshinyolwa osho tashi popi embo la Dr. Toter Meyer osha yela kutya omuwiliki a fi-mana oye tuu oo efimano e li pewa ku-Kalunga mokulininipika kwaye.

**Ya dja ku Djikolo**

Metestamenti lipe ohatu hange Jesus ta velula ovanhu meshabata no sha e ta eenhamanana pokati kavo novanongomhango novafarisai, ovayuki ovo va li hava diinine eemhango doshi-Juda. Ova li va hala okungabeka oilongavelulo ya Jesus oye omuteyi weshabata nokweli longela eflyo nokuli (Joh. 5:16). Osha lulumika eemwenyo davo eshi Jesus ina diinina oveta nelandulafano lopaJuda, oyo oya ka ninga ondjo netimba laJesus mepangulo lokufya komushiya-kano. Mokunyona mEshabata Jesus okwa wanifa oshipango osho shinene shidule aisho "O-hole" omo mwa kwatelwa neyapulo leshabata.

Osho onghedi yomunhu okutota eengaba, okuninga oulime nomingenge opo pena okuhilwa nge palongelokalunga, papangelo nonghalafano noluhapu oda ngabeka ekwafo laavo ve li moudjuu nova pumbwa ekwafo shili, ndele ongenge nakutula po eengaba ye mwene inapa pumbwa ekwafo, fiku eli pumbwa ota yeulula omivelo domakwiwa adisho. Ndele mokuwanifa kwetu opa dimbiwa omunhu oo a pumbwa ekwafo oo meendjovo detu e na oshidinda Overse onhivali.

Eshabata olo oshipango nelombwelo laKalunga (Gen. 2:2) osheshi Kalunga a tulukumkwa kokushita eshito alisho. Eshabata olo efiku lakula letulumuko laKalunga olo kwa kanghama Ombibeli. Ndele Jesus moilonga yaye okwa ya pondje yomukalo oo ovaJuda vatala oo ou na okudiinwa opo efiku leshabata li yapulwe: Okuhaleka olutala nokweenda (Joh. 5:10) okuhapolola omasha (Mark. 2:24) nevelulo loovene nokuli, mompango yovaJuda kamwa li nande efudo netulumuko lasha.

#### Eshabata nemanguluko lomukriste

Kalunga oye ota tale omunhu ye mwene, nefilonghenda loye ina li mangwa koiponga neemhangolombwelo daye, ndelenee kwao a pumbwa ekwafo neyakulo, omushitwa waKalunga oo e na okuyapula eshabata e na oondjolowele nekuwililo. MokuKriste nokutya mefimbo lokulandula Jesus oiwana oya manguluka keemhango deshabata olo nokuli paife lawainwa kOshoondaha. Itaku diininwa eshabata ile Oshoondaha noupofi nokupitilila oo apumbwa ekwafo, ndele okufimaneka nokufimanekifa Kalunga ashisho osho ta shi longwa nashi fimanekife edina laKalunga, ongobe ile ondongi ya wila moshilambo oya pumbwa ekwafo manga inai fya osho nee omunhu komesho yaaishe. Ngaashi Kalunga a manguluka koilonga yaye yomafiku ahama/6 osho omukriste e na okumanguluka koilonga yaye aisho nokudimbulukwa efiku lomambo e li yapule. Naali olo efimbo liwa okupwilikina komawi oo apumbwa eyakulo notaa imbi eyapulo lefiku eli:

Ounyuni owa udifilwa ombili moufiku wa Kri-smesa (Joh.2:14) oyo i na okupangela ounyuni, na keshe osho tashi piyaaneke ombili ei oshi na okumwenekwa diva. Jesus okwa ifanwa koshililo oko taku holola oukaume, ekwatafano nombili, opo ombili i wane po osho tashi piya-neke ombili "oshidinda" oshi na okuvelulwa opo aveshe ovo vehe na ombili va ye mo mehafo. Memanguluko lopakriste haveta nelandulafano tete, ndelenee eyakulo, evatelo, eyambidido lao a pumbwa eyakulo opo oveta nelandulafano i dule okuhanga oshili yayo. Emanguluko eli kali li pamwe pelili pehefi meengaba deongalo la-Kristus oo e li po omuwanifi womhango nexulilo layo. (Rom. 10:4). Etulumuko lashili neveluko olo oli li meni leongalo laKristus. Emanguluko lomukriste oli li opo eshi ye e na ohole namukwao, unene tuu oo a pumbwa okukala ehoyke. Ohole oidule eengaba, eemhango, eenghedilombwelo, omafiku nOshoondaha yoovene nokuli. Mohole ka mu na "ngenge" ile "ndelee" ndele eyakulo ashike noshitwa. Oukriste woye, eitavelo loye otali yelekwa noilonga yakula oyo ove weilonga.

Paulus Heita.

Oshilonga shetumo osho omukanka gwokulongela Kristus, otse aawambo otatu hambelele Jesus Kristu nguka ku li ko nokwa li ko note ya, oye sho a tumu omapenda ge ga zi kokule kuEuropa ge ye ga mangulule oshigwana shetu sho sha li muupika womilema dhuupagani.

Aatumwa aasoomi mboka ya za kokulekule ye ya huka kOwambo, ihe hamolwasha shilwe ye shi pumbwa aawe oomwenyo tuu dhi hupithwe kevangeli lya-Kristus, sigo onena otaa tsikile oshilonga shetumo shoka sha longwa nale kookuku yawo mboka ya tetekele nokuli mevululuko lyaana yaKalunga.

Aamati yaKalunga mboka mwa pewa uuthiga u thike mpa moshimpungu shOmuwa shi longeni ngashi ye mwene e shi mu hogololela opo mwaa yugwe oshishani shoka mwe shi pewa sigo ote ya. Tse sho twa pewa uuyamba u thike mpaka, otu na wo okweenda moonkatu ndhoka dhe ende aatumwa yetu.

Omukriste omukwetu tu hambeleleni sho evangeli lye tu pa uyelele mboka tatu ende muwo mboka ta u tu ulukile mpoka tu na okweenda naampoka tu na okukala. Kalunga na yambeke aatumwa yetu aasoomi naatumwa aawambo mboka ye li miilongayakulo yevangeli lyombili.

M. M. Kandjungu



Meme Maija Pietila a yi kefudho manga kuSoomi

**ETSAKANENO LYOONGUNDU  
DHOMOMAGONGALO**

Mpeyaka puNkurenkuru egonglo lyomoshitayinkeleka shaKavango opwadhanwa oshituthi shetsakaneno lyoongundu dhomomagongalo, ongundu yaalumentu, ongundu yaakiintu, noyaagundjuka nonosho wo Hamunona - Hamukuluntu.

Oongundu adhihe ndhika oshilalakane nwa shadho okuuvako uukriste hashashilwe.

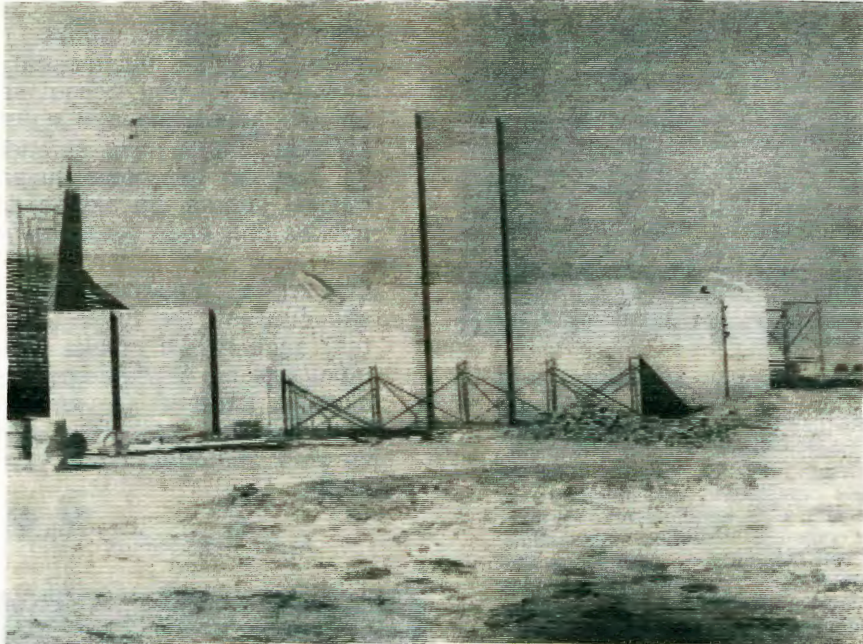
Omaimbilo ngoka ga li mewiliko lya tate Jaakko Kangayi oga li ga shambukitha oshigongi. Opwa umbwa ongalo paongundu dhoka dha li mo.

Aasamane ya umbu sigo .....	R 75,00
Oomeme ya kambadhala .....	R 60,00
Aagundjuka yi itumbuko .....	R 60,00
Hamunona - Hamukuluntu .....	R 10,00
	<b>R 205,00</b>

Elalakano olyo ndyoka iimaliwa mbika yitulwe mombaanga yaKalunga ye e yilongithe moshilonga she.

Peha lyoongundu Aino Namutenya

Melalakano lyonkambadhala yokwiitula momainyengo goshinanena nenge omokuhala okuninga shaashoka paitaalo, shoka otashi longwa ash'ke kOngeleka uuna tayi uvitha evangeli lyoshili nuuyuuki wOngeleka ndjoka ou li ashike meitaalo lyomuKalunga pasilohenda lyomu-Jesus Kristus. (DELK)



**Etungo lyongeleka ompe pOniipa olya tamekele omasiku sho ga li 4 Novemba 1974, ngashingeyi ekuma olya pwa nokuli.**

**MWENENI ILIKANENI ALUSHE**

Oinima aishe oyi na exulilo layo kapu na osho shi li kombada yedu tashi kalelele, ove omunhu waKalunga ou li ngahelipi? Petrus ota yukilile movayakuli vovanhu vaKalunga ta ti: "Ndelenee exulilo loinima aishe oli li popepi: kaleni hano mu na elididimiko nelidiliko mu shiive okwiindila." 1 Petrus: 4:7.

Ondaka yaKalunga otayi yukilile momuyakuli keshe, ongenge omuleli wovanhu ile omuudifi weedjovo daKalunga ta yakula ovanhu vaKalunga, ile omunhu keshe o e li efano laye. Oshiwana osha pilaalekwa keemhepo dounyuni ou, ndelenee kashi shi vali oshiwana shounyuni ahowe, oshi na mwene washo Jesus Kristus.

Efimbo ola fika tu kaleni oupafi nokwilikana opo Kalunga mwene a nyamukule osho ye mwene e shi shi nunina. Kornelius Nghishihange

**ETUMO MUANGOLA**

Nande pe na ngaa oupyakadi uhapu moshilongo osho, molwoita oyo i li pokati komahangano oo atatu ovakondjelimanguluko sho inashi imba evaengeli li longe oilonga yalo. Nande ovatumwa ovasoomi va dja ko kwinya, esi inashi imba evaengeli li udifwe, osheshi fiyo opapa peenhele adishe odo di na etumo, aye oilonga otai ende ngoo nawa.

Penya pOshangalala ofikola yovaevangeliste ehongo layo otali xumu nawa komesho mewiliko lovahongi vetu ovo ovadalelwamo, ovahongwa vofikola ei otu fike pomulongo navatano ovo tu li mo, ndelenee fye otwe lineekela kutya oshilonga shOmwene itashi kangheky kusha fimbo eudaneko laye inali fika pefikilo lalo.

**Omwevangelistehongwa  
Andreas Ikumba**

Mee mukwetu, nge wa hala u tseye Onandjokwe kuth' utale uuranda waa-dha nando puutano, utatu nau kweendithe uyali u ninge wokulya.

- 2 Inda moshitauwa mbilika ndyo tali zi ko lyathinda lwokuuzilo Elim mupitilila Oshakati shi thiga po uukilila noteya u kathike poNiipa.
- 3 Yeluth' omeho u tale ino tya shoka Oshomeya aawe, ndyoka egumbo lyaapangi lyaavu naanaskola, pita puTate Amos e ku nyolel' okakalata u pite pu Meme naKuku u thike ku Tatekulu.
- 4 Tatekulu ta lombwele u ye mukunda gwotango Meme Kaushona ta matuka ti ithana meme gwaAmupolo ota pula Meme gwaNalupe a gandj' ombete komuvu.
- 5 Ongula Tatekulu te ya a tale mpoka wa lala ota pula: u li ngiini?" Ondi li hwepo Tatekulu nena to yamukulwa: "Tandi kambadhala nga."
- 6 Egumbo oli niilonga, ihe otaa matuk' owala Meme Martha kuth' oonane uwende kehe gumwe. Meme Ester kuth' omi ngu tal' oongodhi dhaavu.
- 7 Popitha tate Simeon Eku etel' ekende lyomeya pulakena Meme Ruusa ta pula ngu inaa lya sha ote ya e nokampunda ke niyimati u lye Tatekulu sho te ya ota ti: "U li nawa ya kundila po kegumbo."
- 8 Yakwetu tu panduleni tu pen' omushiti' ehambelelo etu longel' Onandjokwe tayi tu puundjolewele Evu nando likenyaneka mOnandjokwe to li pangwa.
- 9 Yakwetu ne 40 mOnandjokwe Kalunga ne mu pameke a gwedh' oonkondo dheni miilonga e yi mu pa Nampongo ne mu ndjangeke ihe sigo mwa thiki keवलुलुको.  
"Iyaloo, iyaloo aaNandjokwe"  
ku Taimi Endjala.

#### OMUZAIRE A YAPULILWA UUSITAGONGALO MUTANZANIA

Omusamane Ngoy Kasukuti omukwaLuther okwa yapulilwa uusitagongalo komumbisofi Stefano Moshi gwaTanzania. Omusita Kasukuti oye omuZaire gwotango ngoka a longwa elongo lyuuteolohi pakwatho lyongeleka onkwaEvangelii paLuther mosikola yuusita muMakumira shaTanzania. A. Acts



Omufitaongalo omukulupe tatekulu Erastus Shilongo muElim

#### EKAKAMO LYEVI

Moshilongo sha Turkye omwa holoka oshiponga oshinene shekakamo lyevi aantu yomathele ogendji ye ehamekwa, noya thigwa yaa na omagumbo okandolopa kedhina Lice moka mwa monika oshiponga sheso lyaantu yethike lwopeyuyi limwe, oka yonagulwa po nayi kekamo lyevi. Omagumbo nomatungo ogendji oga yonagulwa koshiponga shika. Omukuluntu gwiilonga ota ti kutya iikulya itayi ka gwanena iihupe mbyoka ya hupu mo. Uuthigwa noluhodhi olwi indjipala, eopaleko moshiponga shika otaku dhiladhilwa pamwe otali ka pula uule woowwedhi mbali, po opo pethimbo ndyoka lyomvula yoshikufuthinge nndjoka hayi loko mokati kaKotoba moshilongo shoka.

(Die suidwester

#### OSEMINALI YA PATWA

Epangelo laEquatorial Quinea olo la kala eedula dihapu tali kemakema eengeleka, ola pata eefikola doupristeli adishe daKatolika moshilongo osho, meenhele ngashi Banapa na Nkuefulan. Ovahongwa vamwe ovafiya po nale oshilongo va ka hovela keefikola dopaukumwe odo di li mu Yaounde sha Cameroon.

A. Acts



Omubishopi Abel Muzorewa Omuwiliki wehangano lo ANC

### EMANGULUKO OSHIKE?

Ayehe koshipala shaKalunga oye thike pamwe okukala omuntu a manguluka okwo uuna ndoka sho omuntu e na uuthikepamwe wopantu no kwa kwatathana na Kalunga.

Mekwatathano na Kalunga omuntu e na okwiiutha kehalo lyOmushiti gwe, ye a gwanithe ehalo lyaKalunga pauvaneko ndyoka e li pewa moohapu dhaKalunga.

Uutondwe noondjoolola mbika oyo iini-ma hayi etwa kaantu, ihe Kristus ota ti: "Onde ya opo ayehe yakale ye na egwaneneno, kwaa kale muJuda nomuGerka". Aantu oyendji muNamibia oshitya "Emanguluko" oye shi uvuko nuusama mbu, oye shi ando omuntu ota kala a mangulukila okulonga uuwinayi ngaashi a hala aawe, hasho nande. Omuntu oku na okukala kohi yiipango yaKalunga oyo enkolo ndyoka lye mu kondeka kaa ye miihuna mbyoka tayi shudula edhina lyaKalunga.

Oshilonga sha Kalunga otashi tameke kombanda yevi ha uuna ndoka sho omuntu a si, ihe omolotu tuu nduka tu li mo. Ano uupika wopantu inau pangela aana yaKalunga! "Oshoka omwana okwe mu tumu opo ayehe ya kale ye na egwaneneno."

**Aaron Amunyela**

### ENONGELO LOVAYAKULIONGALO

Otali ka tameka omumvo tagu ya ngele Kalunga e shi hala, mu Febuuali 1976.

Ninga eindilo lyoye, okutaambelwa muutekuligumbo, nomosikola yOmbimbeli mbala. Eindilo lyoye nali kale lya thika manga, 4 lyaNovomba 1975 inali thika. Tuma oombapila tadhi landula:

a, Enyolululo lyonzapo yoye, mwa shayinwa komulongi.

d, Eindilo lyoye mwene.

c, Ombapila yegongalo

d, Epopilo lyomulongi/ omusita/ omwevangeliste/ omundiakoni

*Omukuluntu a wEnonaelo mEnaela*

### OMATSEYITHO

**Uutekuligumbo waakulukadhi ya-evangeliste mboka ya kala mEnongelo mEngela nuumvo tau tameke 5.11.1975, notau hulu eti 30.11. 75.**

**Oshigongi shaatekuligumbo aakulu oshi li ko 21-23.11.1975**

**Ipinge Kristof Shuuya**

### A TEWA MO MOSHILONGO

Omufitaongalo omushamane Hans J. Böck ou a li ta longo ofikola yovafitahongwa mOttjimbingwe, okwa lombwelwa kepangelo a kale a fiya po oshilongo (SWA) manga efiku eti 30 la Septemba inaali fika. Omushamane Böck okwa kala ashike oule womudo umwe moshilongo eshi, eshi a dile kuNdowishiland udwaali.

*(Die Suidwes Afrikaaner 5-9-75)*

### OMUKWETU

Oye oshifo shOngeleka onkwaevangeli paLuther yomOwambokavango. Ohashi nyanyangidhwa mOnilpa. Omukuluntu gwoshifo omumbisofu dr. Leonard Auula.

Ondando yoshifo komumvo muSuidwes nomuAfrika alihe R 1. 00 kombanda yomafuta R 2. 00.

Ondando nomambesitelo naga tumwe kOmukwetu Onilpa; P/B. 2013, Ondangwa.

Omatseyitho agehe gomuntu mwene ohaga futiwa kumwene.

OWAMBOKAVANGO CHURCH PRESS  
PRIVATE BAG 2013, ONDANGWA S.W.A.  
9270