

OMUKWETU

Registered at the General Post Office as a Newspaper

Ontulankalo yokukalamwe- nyo kwomukwaniilwa Filemon Elifas

Omulumentu gwomimyo 43 okwa li endebele mokuhuma ko noonkatu dhopombanda mepangelo lyOwamba okutameka tuu muKotomba 1970 sho a ningi omukwaniilwa gwoshilongo shOndonga. Konima yokathimbo okuza mpoka sho a langekwa omukwaaniilwa gwoshilongo, okwa ulikwa ishe-we a ninge oshilyo shongundu ompitithi mepangelo lyOwambo moshikondo shelelo lyiinima noshiimaliwa, shongundugandjiveta.

Konima yeso lyomukwaniilwa Ushona Shiimi, Elifas okwa li a hogololwa nomawi ogendji, opo a ninge omupeshilyo oshikuluntu shongundu ompitithi. Konima oye wo a ka ninga oministeli onkuluntu yotango mepangelo lyOwambo. Onkatu ndjika yoministeli onkuluntu oye ya po sho Owambo ya pewa onkatu yeipangelo meti 1 Mai 1973. Okuza mpoka omukwaniilwa Filemo Elifas okwa kala ha hogololulwa poompito dhi ili nodhi ili a kale muukuluntuministeli wepangelo lyOwambo.

Pethimbo lyelelo lye okwa li a kwatele komeho iiyendo yi ili noyi ili yoontumwa dhepangelo lyOwambo okuya noku ka kundathana nepangelo lyoSuid-Afrika: ngashi moonkundathana dhondhalate kOshaanda, ndhoka dha ningilwe 1972, nokonima yoomwedhi dhimwe okwa li a wilike oshendo shoka sha yile okwiindila eipangelo lyOwambo. Okwa li ishewe a hogololwa a ninge oshilyo oshitiyali shokangundu okagandjimayeke kaSuidwes, koministeli yotango omusamane John Vorster.



Nakusa omukwaniilwa Filemon Elifas

Omukwaniilwa, Elifas, okwa kala ishe-we ependa mokukondjela ehumithokomeho lyopaikalekelo nokwa pula aluhe ekwatho lyepangelo lyoSuid-Afrika li kale po. Moonkundathana dhe dhahugunina noministeli yotango, omusamane Vorster muPretoria, manga inaaya kuUruquayi, omukwaniilwa F. Elifas okwa li a holola kutya ye okwa hala ehumithokomeho lyopapolitika nedhikopo lyehanganohumithokomeho lyOwambo. Omukwaniilwa Elifas ongoministeli onkuluntu, oye wo kwa li e na okuwilika oshendo shoka tashi ka ya koonkundathana dhomukankaveta gwa Suidwes, tadhi ka ningilwa mOvenduka mesiku 1 Septemba 1975.

Ongomupopili omunene gwomusindilo gwepangelo lyoSuid-Afrika, ngoka tagu utha etopolo neithikameno lyopamihoko mevi ndino okwa li wo omukondjithi omudhiginini gwomadhiladhilo gaSwapo, ngoka taga popile, nomuthindo, emanguluko lyevi alihe muukumwe nomelelo lyepangelo lyaa-yehe.

(Die Suidwester)

Oho lineekele lyeelye?

(Mat.6:24-34)

Pomafimbo aeshe oo a pita nosho yo pefimbo eli letu ovanhu vahapu otave lineekele oinima i li li noku li li. Vamwe ohave lineekele ovanhu vakwao, vamwe ohave lineekele omapangelo ovanhu novapangeli, eendjembo, omakanona eedila doita, ovakwaita, oimaliwa nomaupuna amwe e li li.

Mokutala nomokukoneka ashishe e shi, epulo linene olo la kala po alushe, otali penduka diva kutya: "Oinima ei aishe oyo ya tumbulwa fiyo opapa, oi shi tuu shili okulineekelwa? Pomapandja mahapu Ombibeli, Ondjovo yaKalunga otai tu lombwele nokutya okulineekela Kalunga okudule okulineekela ovanhu. Omushangi wembo lOmapisalome ote tu pe enyamukulo la yela eshi ta ti: "Omunelao omunhu ou te ku lineekele. Oove mwene weengudu dovakwaita." Ye omuyapostoli Paulus otai lombwele Timoteus ta ti: "Kumaida oipuna yomounyuni ou, ve he lineenepeke, navali va ha tule elineekelo lavo moupuna kau shii ku lineekelwa, ndelenee na ve lineekele Kalunga omunamwenyo. Ou he tu pe pauyadi ashishe shoku tu hafifa."

Omakumaido aa otaa wapalele neenghono ovanhu vopefimbo eli letu. Osheshi ope na vahapu ovo tave lineekele ashike oinima yongaho, oinima yomounyuni ou ponhele yokulineekela Kalunga omunamwenyo, ou aeke e li omunaenghono novanhu ovo ve he fi oipuna otave lineekele shinini osho vekwete, nova hala alushe okulikola shihapu nokupunapala shi dule shito ,vo ihava indile nande epuniko laKalunga, ndele otava lakana ashike va hange vati ewanene no moupuna. Omwene Jesus ota ti ovanhu va tya ngaha, otave li fufya ashike voovene, osheshi okukalela Kalunga nemona oshita oshi li oshinima itaashi dulika nande komunhu wombelela nohonde.

Eendjovo edi oda hala oku tu hongakulineekela Kalunga komesho yoinima aishe. Fye otu na okuliefela momake aKalunga efiku nefiku tu longe ehalo laye, fye tu li kake mefiloshisho laye e tu pe osho twe shi pumbwa shopalutu noshopamwenyo. "Oisho yeni aishe i twikeni Omwene, osheshi oye te mu file oshisho." Moshinima eshi ohatu dulu okulihonga shihapu mokutala keehemo domoixwa odo Kalunga he di file alushe oshisho nohe di djaleke oulenga muwa wa fewa. Osho yo nafye ngeenge hatu kala alushe tu na oshisho shokukonga tetetete Ouhamba waKalunga nouyuuki waye-ouyuuki oo te u tupe meitavelo molwaKristus, ndele hatu hetekela okukala twe li yapulila Omwene nelongelokalunga mokukala kwetu, nena Kalunga ote tu wedele ko kwaaisheishe osho twa pumbwa oshali..

EFIMBO LONGOLA

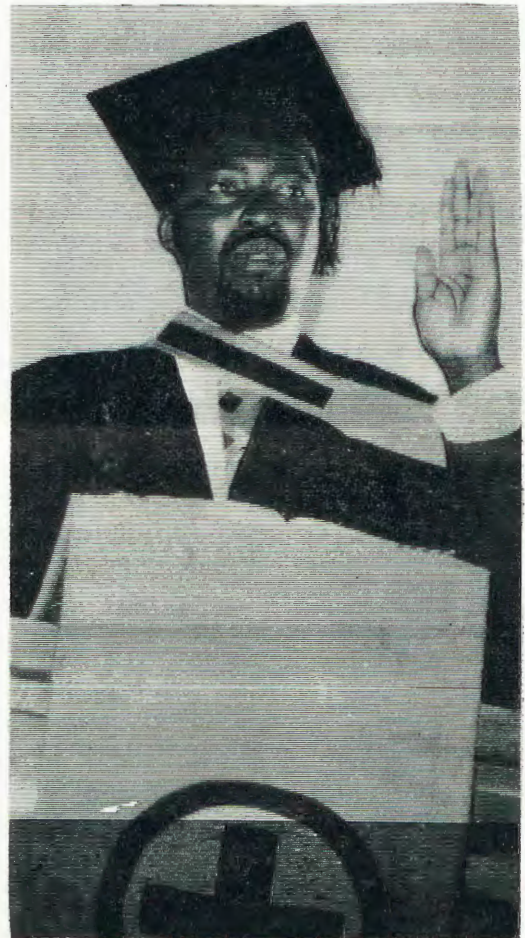
Ounyuni wonena ohatu u luku efimbo longola yaKalunga taa efimbo tuu olo Kalunga ta kongo oshiwana shaye.

Ovaitaveli itava tila efimbo latya ngaha, shashi omesho avo okwa mona nhumbi oilonga younyuni ou i li. Tala omudingonoko woye, meumbo leni, poushiinda sheni, momukunda weni nomoshilongo sheni ashishe.

Odino yokudina Kalunga neendjovo daye, ovaliningifi novasheki ovefike peni. Efimbo eli olo ofikola kovaitaveli, okudimbulukwa ongola ei tayi dengifwa ounyuni shashi owe li longela ehandu laKalunga eshi we li teka omushiti wavo.

Ndele vo otava ka efela kombada yeni oifahoni yeni, ndee nye otamu ka humbata oikalunga yeni. Ndee tamu ka shiiva nokutya aame Omwene Kalunga Hes. 23: 49.

Paulus Hamukwaya.



Omusitagongalo M. I. Amadhila

Oinima aishe yomounyuni ou ohai lunduluka, yo vali ihai kala alushe, onghee nee kai shii kulineekelwa. Osho hashi lunduluka kashi shii ku lineekelwa, osheshi oto lineekele nena ndele mongula kashi po vali noitashi dulu vali okukwafa. Umwe aeke ou iha lunduluka nande efiku limwe limwe, oye Jesus Kristus Omona waKalunga omwene wetu nota kala ngaashi e li alushe fiyo alushe. Ohamba yeehamba noMwene woovene. Omunelao oye aeke ou te mu lineekele, AMEN.

Matti I. Amadhila

Oshiponga hashi etwa ku TB-Meningitis

TB oya shiivika ngaashi omukifi oo hau kwata omapunga. Vamwe nokuli otu shi shi ngoo, kutya oTB ohai dulu yo okukwata omakipa (bones), omatwikililo (joints) nomeedjo (glands). Ndele juhapu ohashi dimbulukiwa yo ngenge omukifi ou wa kwata ouluvi; unene mounona.

Eembuto daTB ngenge da dja komapunga ndele tadi xutukile medingonoko lohonde, ohadi yi nee fiyo omouluvi notadi u pombola. Onghatu ei oyii unene noitilifa koudu wepunga. Yo oyo nee hai ifanwa TB meningitis. Eshi osho oshiponga unene kounona; na unene ngenge inava hakulilwa po. Hano omunhu oo ile okaana oko inaka twalwa diva koshihakulilo otaka fi ashike ile taka kanifa eendunge, ile a ninge nokuli oshilema shoshilyo ile shoilyo yonhumba, konima eshi ka veluka.

Pehovelo ouhanana ohava amenwa komikifi, nge tava tunhilwa netunhilo la BCG, nodiva konima ohava tunhilwa, opo vaha kwatwe ku TB. Hano osho yoo nee omudali ile ove omuleli wokaana, ngenge ou wete kutya ekwafo eli inali wanena okaana koye, onawa nge to ka twala koshihakulilo. Shaashi fiku limwe oka kwatwa ku TB meningitis.

Ouhokololo ava tava shikula apa, otave ku fatululile nghee oudu ou wa TB meningitis, hau ningi nonghee tau dulu okuhakulwa:

a) Boston Kopo, okaana keedula 10, oka tambulilwa moshihakulilo shimwe mefiku 25 laApilili 1975. Oka hangwa ka ningwa nokuli okapofi komukifi ou wa TB meningitis. Oka hakulwa oule weehani 7. Eshi ke uya tete moshihakulilo omo, oka vixwa ke na eekilograma 24.80 (Kg). Ndele hauxuuninwa oka vixwa ke na eekilograma 50.80 (Kg). Pefimbo eli oka li haka dulu okudimbulukwa omunhu mondaka ile tuu nge ke mu kwata kolutu. Eshi osha li shi hafifa unene kovahakuli vako.

Paife Boston okwa veluka komukifi wa TB meningitis. Kakele ashike koupofi, ndele ehanganano la SANTA ole mu longekidila ngo ofikola yovapofi. Eshi vali shi hafifa unene, ondaka yaye ya hauxuuninwa eshi a fiya po oshihakulilo. Oya li "Nda ti tangi".

b) Eli olo ehokololo la Harriet Ngwenya, okakadona ko kuBoksburg. Oka tambulilwa mokapangelo kehangano la SANTA, mefiku 4 la Sept. 1974. Omafimbo ile efimbo olo okwa li kehe na omaliudo nomesho ako okwa li a hepekwa nai komukifi ou TB meningitis. Oka li okalema omaulu nomaoko. Omukifi o-



Aanona ayehe mboka haa valwa inaa kola ohaa tulwa meshina lyokukoleka mOshipangelo.

kwa li we ka hepeka nai shaashi kaka li haka dulu okulinyenganyenga.

Ndele divadiva molwouhaku muwa woshihakulilo, nomolwaashi ka endeledwa po mohani yashikula, hano Noveмба, oka kala ke na omaliudo e li nawa, omaulu nomaoko yoo okwa kala nawa. MuDesemba omuhakuli okwe ka kufa mokambete kako ndele okwa kala he ka tula omutumba kokakefa, opo ke li honge okukala omutumba koovene.

NomuJanuali oka dula nokuli oku shi ninga koovene. Opo omuhakuli okwa kala ha yale ekumbafa pedu. Opo a kala he ka tula, opo ke linyenge nupu nonemanguluko. Okwa kala yoo he ka hongo okufikama nohauxuuninwa okweenda nokuli. Ndele ka kwa li haka dulu okukwata sha. Omuhakuli okwa kala nokudeula omake ako fiyo ka shiiva okukwata sha noku shi diinina shiha wile pedu.

Harriet okwa li ha dulu okuyola ndele iha popi. Paife oha dulu nokuli okulotokela kombelewa yamatron, opo a ka tambule oiimati. Ina eshi e mu mona ta lotoka, oha papala ashike eshi ta kwena, shaashi oha dimbulukwa ashike eshi tete kwa li taka vele unene notaka hale okufya.

Omauhaku e li ngaha okwa ningilwa yoo vahapu. Oudu ou alushe ohau eta oulema woshilyo shonhumba konima yokuveluka. Unene ngenge inau hakulilwa po.

OSHIGONGI SHAAILONGI AAKRISTE KUTURFLOOP

Shika oshigongi oshititatu sholudhi nduka, shotango osha li koUniversiti ya Zululand, momumvo 1968, oshitiyali osha li kuAmanzimtoti 1971, naashika osha ningilwa mo Universiti ya North. Otwa yile ko aailongi 42 naaPresidente 5, omwa li aantu ye vule 800, mbaka oyo aailongi aalongi, nokuume kEhangano ndika. Oyendji oya zile koombinga dhaSouth Africa, kuLesoto nokuNamibia. Yalwe oya zile kondje ngaashi kuKenja, nokombanda yomafuta kuAmerica naEngland. Oshigongi osha kala omasiku 7, (eti 27/6-3/7) mewiliko lyomunashipundi Mr. Masipa omukuluntu-skola muMobeba School muTransvaal, nomupehamunashipundi gwe Prof Dr. Lekhela moUniversiti yaNorth.

Nando oohamushanga yomolweendo ya popitha oshigongi mowandaha, okwa li ku na aayenda yaali mboka ya li aapopi aanene yoshigongi.

Omusamane Rev. D.M. Gitari B., A.B.D gwokuKenja, Amushanga omunene gwEhangano mbimbeli lyaKenja omunashipundi gUukumwe waailongi aakriste muKenja, Omumbisofi gwombingangeleka yAngilikana muKenja Uzilo Rev. Gitari ngoka ku uvithile miilongo oyindji muuyuni, pamwe naye opwa li omuuvithi a simana omuSouth Africa, Rev. E.M. Sikakane B. Theol.

Kohi yoshipalanyolo shika, aapopi yoshigongi, mboka nde ya tumbula metetekelo, oya longithwa kOmbepo Ondjapuki moku tu ningila ootundimbimbeli niipopiwa yilwe mumbyoka twa mono notwa dhimbulula oonkondo oonene dha Kalunga tadhi gumu oomwenyo dhetu, notadhi hupitha aagundjuka naakuluntu tadhi ya pe omatokolo montaneho yokwiigandja kOmuwa noku mu landula.

Etumbulo lya li lya nyolelwa mepandela enenenene lyoshigongi:

"IHE MU MBIKA AYIHE TATU SINDI NOKUSINDILILA OMOLWA NGUKA ETU HOLE." ROM: 8:37.

"Katu na iitya mokupopya nenge moku nyola ya gwana oku mu tompela iikumitha mbika, ihe otatu hokolola nomukumo nonetompelo epe kutya: Kristus ota longelwa nomwenyo aguhe, noonkondo adhihe, noondunge adhihe, nono-mainyengo agehe nolutu aluhe, kaailongi hwiayaka methimbo ndika."

Osho omunashipundi omusamane Masi-pa a tameke okweegulula oshigongi. Okwa popi nomukumo ta ti: Shoka sha simana mEhangano ndika haailongi, ihe oKristus omutse gwEhangano ndika, nguka e hole naatondi ye. Ngele katu hole aantu ooyakwetu, ope na sha sha

puka mutse. Kristus sho a alelwa komushigakano okwa li a yelutha omaako ge e ti ithana aantu ayehe pwaa na ondjoolola, ehanganano ndika olyomuntu kehe, pwaa na okatongotongo. Ngele otu tonde omuntu ehupitho ka tu li matha, ngele iigwana yi tondathane yo anuwa otayi longele Kalunga, osho eifundjaleko.

Otwa pulakene wo epopitho lyoministeli onkuluntu yaLeboa, dr. Patudi ngoka a egulula oshigongi pambeleva. Nomatumbulo ge gamwe okwa ti: "Ohole oyi li komilungu dhaantu oyendji, ihe uumbanda wokutilathana nuutondwe wokutondathana ihau pitika yi monike pokati komuntu nomuntu, nopokati koshigwana noshigwana, otu na okuhangana, hakutopoka. Omuthindako kagu na onakuyiwa, ihe elongelokumwe oyo li na onakuyiwa. Okatongotongo ka kankamekwa kuunenentu wopalwaala nenge pamuhoko kake na onakuyiwa, ihe esimanekathano oyo li na onakuyiwa. Aantu muutondwe nomuumbanda oya etha ehalo lyaKalunga noya landula lyawo, mwaashoka tatu ningi natu kongeni ehalo lyaKalunga noku li landula."

EMANGULUKO OLYO ONDJILA YESINDANO

1) Omuntu kehe oku na okumanguluka kwaashoka she mu manga, okukondjela emanguluko inaku pumbwa omuntu e na uuyamba owindji, shoka sha pumbiwa osho ohole, ehalo nondilo yuuntu. Okumanguluka kashi shi okulonga shoka wa hala, ihe okutseya shoka waana okuninga, ondjila yokemanguluko ontseyo yokwiitseya mwene kutya owa pumbwa Kalunga.

Mpaka Rev. Gitari oku ulike unene kiiyimbi mbyoka tayi imbi omuntu esindano:

2. a) Okwaaha longa shoka u na oku shi longa,
b) okulongitha ethimbo lyoye lyevululuko nayi,

c) onyalo (Satana oko ha gwile),
d) okunongonona uuntshitwe womuntu, peha lyoku u simanekela Kalunga. Mbika oyo ya pundukitha ondjayi yeitaalo David moluhondelo, ihe oya penduka po nga sho ya tumimwa Natan omuuvithi omwaanawa. (2Sam.11:1).

Omusamane Sikakane mootundimbimbeli dhe, okwa holola unene nkene OHOLE, EITAALO NOMUSHIGAKANO yi li onzapo yesindano lyonkalamwenyo yopakriste. Uumwayinathana nuukumwe muKristus ngoka e tu hanganitha moho, oya li ya pangele oshigongi shika sigo twa lalekathana.

Tala kep. 6

OKATONGOTONO OKADHIGU OTAKA TSIKILE NATANGO

Oshigongi shEhangano lyOongeleka mu-South Africa shoka sha li sha gongala muHammanskraal, popepi naPretoria, osha holola omaiyuvo gasho gomeni sha ti: "Oonkatu ndhoka dha ningwa kEpangelo lyaSouth Africa okupupaleka okatongotongo kopokati komihoko ongonkambadhala yokweegulula osheelo shonkundathana pokati kEpangelo lyaSouth Africa niilongo yaAfrica yopuushinda mbyoka ya manguluka, odha "kaama" unene koinbanda."

Etokolo ndyoka lya ningwa newi lya fa lyomuntu gumwe, otali pe epangelo uusama sho tali dhiginine natango okatongotongo okadhigu, ngaashi omadhiladhilo gokutembutha aantu 200-000 noku ya fala kehala tali ithanwa Committees Drift moshitopolwa shaKaapa. Oshigongi osha pe wo epangelo uusama sho ta li kambadhala okumbandapaleka aantu yomoshilongo mboka haa li pe uusama nokumweneka aatamaneki yalyo ayehe.

Oshigongi osha tumbula natango kutya onkambadhala yokupangela nokuvulikitha aantu kondhimbo, hugunina otayi ka vala ashike omapiyagano nomaidhengo mumwe."

Oshigongi osha indile iinima oyindji yilundululwe, ngaashi okuzimina aantu yomihoko adhihe ya kale ye na uuthemba wokutya sha mepangelo lyoshilongo nuuthemba wokutya sha kombinga yevi nelongitho lyalyo, okuhulitha po o mukalo gwiilonga yokondhalate ngokatu eta eyonuuko lyomagumbo noonjokana dhaaluudhe, ehulitho po lyengambeko lyiilonga pamihoko nokayoya komoofambilika nokomoostora okuhulitha po omamweneko gopaupolotika (bannings) omaedhililo gomomagumbo nomaedhililo gomoondholongo pwaa na epangulo lya sha.

Eps

Efumviko lyomukwaniilwa Filemon Elifas

Omudhimba gwanakusa omukwaniilwa Shuumbwa ogwa zi ponkulumbala ye, eti 23.8.75 gu li moshihauto oshiluudhe, gwa kwatelwa komeho komumbisofi L. Auala nomusitagongalo J. Gweendama mboka ya yakula okuyapula ombila yomukwaniilwa ndjoka yi li mOlukonda popepi nonkulumbala. Ooministeli dhepangelo lyOwambo odhe ende dha tula oshihauto shomudhimba pokati, manga aakwanezimo yomukwaniilwa, no-showo omunyekadhi naanona ya nakusa ya landula mo noshihauto oshikwawo,

Eilikano lomufininikwa

Ovahepeki voshiwana eshi kave fi vali okuvalulwa noitava pu. Ova fya unene ondjala notava pona po ovashitwa voye, unene ouna novanyasha vanini va idililwa meedolongo omolwoshili voye, Kalunga Tate. Omwene, tu popila kuovo tave tu kufile eendjebo nde omolwoshili voye. Kalunga, ohatu lishuna momapulo: Ove we shi ufa? Ihatu dulu vali oku shi humbata, Omwene, tu popila fye oshiwana shoye medu eli.

Akutu, Omwene, vahapu vomufye ova kanifa omaumbo nomaliko omounyuni ou. Osho oshiwa nosha wapala, Kalunga ketu, molwaasho va iwa navo molwoshili voye. Nande va kanifa ngaha, Omwene ohatu va indilile u va kolekele eita-velo lavo mokukalamwenyo kwavo akusha fiyo omafiku avo okudja mounyuni ou. Kwafa yo oonakudala novakwapata vavo vehe va nyikile unene oluhodi, ndele ve va dimbulukwe momailikaneno koshipala shoye.

Nd. Shilongo



Shika osho oshihauto she endithwa omudhimba gwomukwaniilwa F. Elifas

sha landula shoka shi na omudhimba. Aasimanekwa oya landula mo wo okuya komawendo.

Ongundu onene yaapolisi yaS.A. ya gandja esimaneko enene mokusaluta nomokuhika omankuma okuthindikila omukuluntuministeli gOwambo nakusa omukwaniilwa Elifas. Engathithi enene lyantu ye thike lwopo 2,000 sigo 3,000 oya li ya gongala pomawendo pefumviko lyomukwaniilwa.

Omulongi gwaasitalongwa moUniversiti

Omumbisofi E. G. Gulin a mana oondjenda dhe muukulupe womimvo 82 mu-Suomi. Tatekulu Gulin oye gumwe ngoka a li a putudha omapipi ogendji gaa-sitalongwa moUniversiti, sigo omumvo ngoka 1945 sho a hogololwa a ninge omumbisofi moshitayingeleka shaTampere. Moshilonga shoka shuumbisofi okwa kala mo sigo omumvo 1966, uuna ndoka a yi mopensione. Tse Aawambo otatu mu dhimbulukwa nohole no-djuulukwe, oshoka a li a gandja omwe-nyo gwe kutse. Okwa talele po Owa-mbo muJuli gwomumvo 1963, uuna ndoka sho a yapulile omumbisofi gwetu tatekulu Auala oshilonga shuumbisofi. Kuume kAawambo nguka, okwa li a gandja iimaliwa omagano, opo yi longithwe mokuhumithakomeho aasitagongalo yongeleka ndjika yetu ya ELOK, moosikola nomookersesa dhi ili nodhi ili. Omumbisofi Gulin okwa li wo kuume kaantu ayehe, okwa li a longo shili nuudhiginini oshilonga she okuhiya aantu ya ye mOshilongo shaKalunga.

“Ondjila yaayuuki ya fa eluwa tali tende notali ieta nuyele tau koko, sigo taku shi shili”.

Omayel.4:18.



Nakufya Omubishopi E. G. Gulin

Dha za kep. 4

“Indeni nelaka lyehanganitho muuyuni, uvitheni ohole, indeni muuyuni mu ka tsakaneke omahongololo, indeni muuyuni mu ka tsakaneke omatondathano ngoka taga kunwa pokati kiigwana mu-Namibia muSouth Africa, ihe tse inatu fa ooPita mboka ya fa yaa na Ombepo Ondjapuki tse otwa homatekwa kuKristus Jesus Omukulili gwetu.”

B. Haimbodi



Mesak Nghifikwa ou ta longo oikwamaluseno mOnandjokwe. Odjapo yoilonga oyo okwe yi mona eshi a li kofikola kOvenduka 1974.

OVALIKALELI MU SWEDEN

Moshilongo shaSweden omwa tukuluka kombinga youlikaleli, lwotete okudja kEyelifo lEitavelo. Omumbisofi Bengt Sundkler, ou a longa shito kuTanzania, oye e va yakula melongelokalunga omo ovalumenhu vane va yandja eudaneko kutya vo itava hombola nande, ndelenee otava kala ovafyoona nova udaneka yo va kale ngaa moshilongo mokati kovantu vakwao.

Ongeleki yaSweden (onkwaEvangeli pa-Luther) e shi i he na omaufo a sha kombinga yeenhele dovalikaleli, onghendabala ei oya talika ashike oshinima shaavo va yandja eudaneko e li polwavo, osho omumbishofi omukulunhu wongeleki Sundby a tonga. Ovatameki ava vane voulikaleli ovo ava Johannes Linden, Cecarius Caraklin, Bebg Horberg nalngmar Swantesson. Ovamati vakwao vatatu ova teelega yo oku yandja eudaneko latya ngaha.

Eps

OSHLONGATUMO MONANGOLO

Ovakwaneongalo voposhinagoga eshi Onangolo meongalo Eenhana, ova li va hafela oshilonga shetumo, eshi va umba ongallo oyo ya dja oimaliwa R 6, 34, oimbale, eefewa, noidjalomwa okwa li ya ongelelwa etumo. Efiku olo tuu olo, vatalelwa po komufitaongalo Toivo Muonde ou ta longo metumo kuAngola, naye yo ove mu umbila ongallo yi fike R 4, 14, molwetumo olo ta longo mulo penya pOnambunga.

Etayo olinene, ndelenee ovalongi kevahapu, indileni Omwene a tume ovalongi meteyo laye.”

Gideon Shakaalela

MOSHITUTHI SHETUMO KOMANDONGO

Esiku olyo tuu ndika Omuwa kwe li ningi tu imbeni pombanda tu mu nya-nyukilweni. Osha uthwa kOmuwa no shi li oshikumitha momeho getu.

Omudonga gwonanalele okwa tile: Lukambo pandomuhuya Nandjako ya tumba panda omulumentu gwoye.

Otwa gongala pehala ndika lya taamba aatumwa yotango mevi ndika moshilongo shika tu hambelele Kalunga ketu, Omuyapuki, tu hambelele Kalunga Omuyuuki, Omwaanawa, Omutalanteni, Omunamutimahenda, Omwiidhidhimiki, Omunamutimamule, Omudhiginini, Kalunga kaaluhe, ihaa lunduluka, Omunandunge awike, Omunawino gwashaashoka, Omunamapangelo agehe, Omukwaniilwa gwaakwaniilwa nOmuwa gwaawa.

Twaa kale ngiini itaatu hambelele Kalunga tseni olumono lwomomugulu, tseni mboka twa li kokule nokwe tu ningi yopopepi muKristus Jesus Omukulili gwetu.

Omukwaniilwa Kambonde kaNgula 1911 peso lye okwe shi hempulula ngeyi: "Omukulili gwandje ondi mu shi oku na omwenyo."

Otseni twaa hambelele Kalunga ngiini, tseni mboka kaatwa li oshigwana. Okwe tu ningi oshigwana noonzi dhuusita we, nokwe tu ningi oyana meso lyOmwana omuholike.

Oshoka kaku na omukwawo ehupitho lya kala muye nokaku na edhina lilwe lya hololelwa aantu moka tu na okuhupithilwa mo lilonga: 4:12: Natu tye: Lukambo pandomuhuya, Nandjako ya tumba panda omulumentu gwoye.

Uvitheni edhina lye hokololeni mokati kaapagani iilonga ye iinene.

Aalongwa yOmukulili oya vuluka koshipango she: Indeni nuyuni auhe kuvithileni aantu ayehe evangeli elaka lyombili.

Elaka ndika olye ende tali taambathanwa sigo lya thiki kutse niilonga iinene yaKalunga oya hokololwa mokati ketu, nomo yi li mokati ketu Tala oshigwana nkene sha fa elundu lyothinge sha zalekwa kOmuwa sha lokelwa omvula yOmbepo yaKalunga. Uvitheni edhina lye hokololeni iilonga iinene yaKalunga mokati kaapagani.

Aasoomi yakwetu yi ikutha ongunga oyu uvitha edhina lyaKalunga mutse noya hokolola iilonga ye iinene miilongo yetu mookuku aapagani. Otatu ya pandulile Kalunga.

Omukwaniilwa gwaAashawana Khama 1923: Okwa gongele oshigwana she muwa e ta ti: "Kandi na oohapu odhindji oondhika dhenyanyu nodhehambelele to tanga omukwaniilwa gwalngilanda omoluwanawa we kungame. Ote kala gwomukwaniilwa gwalngilanda".

"Tandi hambelele Kalunga omolwaahongi ye tu etele uyelele noye tu ulukile ondjila. Te nya-nyukilwa aatiligane yalwe. Nda kulupa otandi lombwele aagundjuka oohapu ndhika nadhi hite moomwenyo dheni. Shika sha longwa po osho oshilonga shaKalunga".

"Inamu tamanana, dhiladhileni ngaalumentu. Kongeni ondjila yaKalunga kalekeni oomwenyo dheni kokule niikolitha noohedhi dhuupagani Kalunga ne mu yambeke, one aatiligane none oshigwana shandje".

Osho ngaaka miilongo ayihe mbyoka ya makele uutoye wevangeli taa vulu okuhambelela Kalunga nOmukulili nOmbepo Ondjapuki. Uvitheni edhina lye: Kalunga okwi idhidhimikile nale omathimbo guugoya, ihe ngashingeyi ota lombwele aantu ayehe naakuhe ye na okwiitedhulula.

Oshoka ngele tandi uvitha evangeli kandi na okwiitanga ihe yayee, ngame ngele itandi shi ningi.

Aawambo otseni aanangunga yokufala elaka ndi kumboka inaa makela uutoye mbuka wevangeli: Uvitheni evangeli okooha nooha dhuuyuni.



Omusitagongalo Titus Ngula

RUSIA OKU NA AAKRISTE OYENDJI YE VULE YOMUINGILANDA.

MuLondon omwa zi elaka tali, ti moshilongo shaRussia shoka shi li mepangelo lyaakomunisi, omu na aakriste oyendji ye vule yomulingilanda.

S'ka osha popiwa komukadhona Jane Ellis, omukonakoni gwelongo lyeitaalo lyopakriste nolyuukomunisi, mOskola yokombanda Keston College. Meme Ellise okwa talela po oshilongo shaRussia lwaali nokwa koneke kutya onkambadhala yEpangelo lyaakomunisi okudhima mo ukriste noonkondo adhihe. Okutula momusindalongo gwElongo ndyoka tali ti kaku na Kalunga nokukutha po aanona paakuluntu, opo an'wa yaa longwe ukriste, ash'he shika inashi kwatha nando osha.

EPS

Evangeli lyaKristus olyo embakumbaku tali undula omiti, tala sho lya pulula, tala sho lya ninga oondjila. Olya li naahingi oonkulungu, aanona yAasoomi. Ando hambakumbaku ndika ando ka pe na uulongisikola, uusitagongalo, uupangi, uudiakoni nuuyevangeliste. Ondi tumbule we shike? ando ndi tye shila kape na shigwana shi ihalelwa kuyalwe. Ayihe tayi inomenwa oya valwa kevangeli. Shigwana "Nekwa lya tsima oye nyoko".

Inashi gwanena Kalunga oku mu hambelela owala muuyuni mbuka kevi ndika aawe. Ngele twa uvitheni notwa hokolola iilonga yaKalunga, otaku ya eteyo olyokunyanyukwa uuyamba womegulu sho twe u taambithwa: Aauvithi naauvithilwa, aatumwa naatumi, otaa ka thikithwa momisioni yaaluhe mohango yO-nzigona ya zala oonguwo dholina odho uuyuki waayapuki.

T. Ngula

CANON CARR OTA TSIKILE NATANGO

Ethimbo lyaCanon Burgess Carr, okukala amushangandjayi gwa ALL AFRICAN CONFERENCE OF CHURCHES, olya lelepalekwa natango mEwilikongundu lyehangano ndika noomvula ntano. Ewilikongundu olya holola olupandu lwalyo okupandula Kalunga omolwomukumo omunene gwaCanon Carr mokulonga oshilonga she, nomoluunzapo, ewiliko neitulomo lye. Ewilikongundu olya koleke wo omalangeko miilonga yopaunambelawa gamwe gaashi ndyoka lyomukulukadhi Jael Mbongo, ngoka a uthwa a kale amushangandjayi omushona gwa AACC. Efolo Mbongo oye omukiintu gwoatango ngoka a pewa oshilonga sha tya ngaaka.

AACC NOONGUNDU DHAAKONDJELI-MANGULUKO

Ewilikongundu lya ALL AFRICAN CONFERENCE OF CHURCHES ola udaneka kutya lo otali twikile okulonga nou diinini li holole po outeologi oo tau wapalele nou uditike keengeleka nokovanhu vaAfrika.

Moshoongalele shalo olo sha ongalele muNairobi shaKenya pexulilo laJuli, Ewilikongundu eli ola kolekulula vali, ku tya lo otali twikile okukwafa eengudu dovakondjelimanguluko mOumbuwanhu waAfrika. Ola tokola yo okukendabala neenghono adishe li fikife eengeleki domuAfrika, fiyo oposhikako shado ovne tadi ka dula okulifikamena kombinga yemona. **EPS**



Omutopatopi gwoombelewa dhoshinyangidho Aune T. Iyambo ngoka a longwa okutopatopa mEngela 1973, okwaka kala wo amushanga gwaalundululi yOmbimbeli muElim omumvo ngu gwa ziko.

KOOKAUME KETUMO

Ofye ovalongi pamwe nanye momapya etumo. Otwe mu pandulila ekwafo leni la fika kufye ngaha:

Ovahongi meongalo Onheleiwa	R 100,00
Ova C.D.M. kuFestus Nghifindwako	R 22,56
OvaMbaye kuPetrus Haipumbu	R 22,15
Ova C.D.M. kuJonas Haimbangu	R 19,56
OvaVenduka kuOiva Shilyomunhu	R 17,20
OvaBerg Aukas kuJoel Haiduwa	R 13,51
NovaShomeva kuJonas Nghipithwako	R 8,10

kumwe R 203,08.

OVAYAKULI vakwetu mepya lOmwene wetu Jesus Kristus! Ngaashi mwa yadifa ngaha oshikefa shEtumo lOmwene, osho nOmwene ota yadifa yo oikefa yeni. Ne mu yambekel

Omukweni moilonga: M. Nengola, Onheleiwa.

VA SHUNA KEDU LAVO

Omufitaongalo Erkki Halme pamwe neumbo laye ovafika kuSuomi eshi va dile kuAngola, moloupyakadi ou u li pokati komahangano ovakondjelimanguluko oo taeli nyika komakombo. Oshilonga eshi shetumo lovaSoomi olo tali longo poShangalala muAngola, osha kala oule weedula 4. Mopaife eshi oshilonga, otashi twikile oilonga yasho, mewiliko lofavitaongalo ovadalelwa mo novaevangeliste ovo va fyaala kwinya.

OMUKWETU

Oye oshifo shOngeleka onkwaevangeli paLuther yomOwambokavango. Ohashi nyanyangidhwa mOnilpa. Omukuluntu gwoshifo omumbisofi dr. Leonard Auala.

Ondando yoshifo komumvo muSuldwes nomuAfrika althe R 1. 00 kombanda yomafuta R 2. 00.

Ondando nomambesitelo naga tumwe kOmukwetu Onilpa; P/B. 2013, Ondangwa.

Omatseyltho agehe gomuntu mwene ohaga futlwa kumwene

OWAMBOKAVANGO CHURCH PRESS
PRIVATE BAG 2013, ONDANGWA S.W.A.
9270