

OMUKWETU

Registered at the General Post Office as a Newspaper



ETESTAMENDI EPE LYOSHINDONGA LYA PU OKUTOLOKWA

Oshilonga shokutoloka Etestamendi Epe melaka lyOshindonga ngashingeyi osha pwa thilu nenyanyangidho lyembo ndika oli li ngashingeyi miikaha yOshinyanya ngidho shEhangano lyokunyanyangidhitha Oombimbeli mu S.A.

Otwa tegelela ngashingeyi Etestamendi melaka lyOshindonga lya tya ngiini? Otashi vulika epulo ndika li li maantu oyendji. Pauyelele mboka twe u pewa komusitagongalo Eino Amaambo ngoka a kala i ipyakidhila noshilonga shika uule womimvo konyala 7, otatu eta mpaka shoka sha kala tashi lalakanenwa metoloko ndyoka.

Oshinima shotangotango osho okutula elaka lyOmbimbeli melaka ndyoka li uvitikiwe ko nawa kaaleshi yalyo. Inatu pumbwa oohapu dha-Kalunga dhi li melaka lyOshimbulo, lyOshiingilisa, lyOshiheberi nenge lyOshigreka, oshoka o-malaka ngoka katu ga uvite ko. Elaka lyOmbimbeli yOshindonga ndyoka tu na ngashingeyi ngashi twe li longekidhilwa ku Nakambale Kenene, otwe li longitha nepandulo omimvo odhindji.

Ihe onkene otatu dhimbulula mulyo uudhigu wa kuku Nakambale oku tu monena iitya ayihe yi uvitikiwe ko nawa. Omunyolelo nguka tu gu na ngashingeyi, hago ngoka gwa li tagu longithwa methimbo lya kuku Nakambale, okwa ningwa etoloko epe lyOmbimbeli melaka lyOshindonga. Ihe mokulongekidha shika, opwa kala wo ooveta ndhoka dhi na okulandulwa, tadhi kwatelele mo iinima mbika:

a) Mokutoloka Etestamendi Epe, naku longithwe otekisti ndjoka ya ziminwa kOmahanganombimbeli agehe kumwe (United Bible Societies). Kombinga yomahala gamwe mOmbimbeli inaaga popilwa koonzapo ndhoka dhi na onkondo nenge dha simana, ihe otaga monika ngaa moetekisti dhopahistoli lyOmbimbeli, nena iitya nenge oohapu dha tya ngaaka, nadhi kale motekisti dhi li miikondekitho.

b) Omafatululo naga kongwe mookomentali (omambo ga fatulula Ombimbeli) ndhoka dha ziminwa kEhanganombimbeli.

c) Kombinga yomutungilo gwelaka, napu kambadhalwe olupe lwotekisti lu kale lu li popepi naandoka lwelaka lyOmbimbeli. Otekisti nengele oyi li pashitewo mOmbimbeli, nena oyi na wo okukala pashitewo motekisti yomOshiwambo.

d) Etokolo nali dhiginiye kutya omadhiladhilo getumbulo kehe gu uvikiwe ko kaaleshi. litya nomatumbulo nayi nyolwe naanaa ngaashi antu yelaka ndyoka haa popi.

e) Mokunyola Ombimbeli otaku dhiladhilwa unene aaleshi yepipi lyomimvo 25 sigo 35. Etokolo li kale li uvitikiwe ko, hakaakrste ayeko, ihe nokaapagani wo ngele oye shi okulesha, nenge taa leshelwa.

f) Elalakano lyetoloko lyOmbimbeli okundjandjukununa amatumbulo omale noga vongakana, opo gu uvikiweko nawa. Omayeletumbulo gOshiheberi nenge ogOshigreka momalaka moka mwa za elaka lyOmbimbeli, hago gOshiwambo, onke naga tolakwe molupe ndoka lu uvitikiwe ko mOshiwambo.

Yeleka mpaka: Oshitokele sha fa olumi. Olumi kalu shiwiki kAawambo. Ihe oshitokele sha fa omahegele gomongwa, nenge sha fa omahini, nena osha yela.

Poompito mpaka omayeletumbulo omakwiilongo taga tsu kumwe nOshiwambo naga lo-

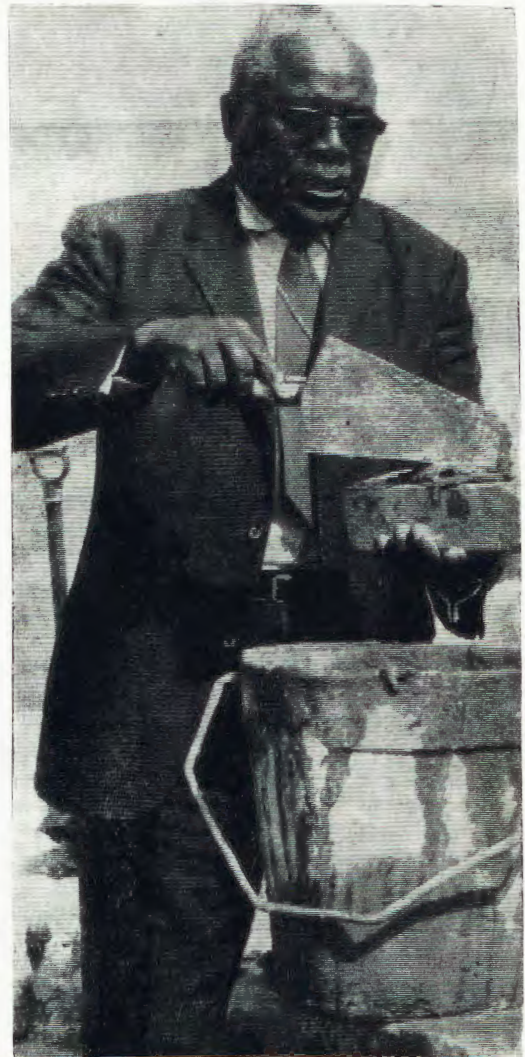
ngithwe wo metokolo lyOmbimbeli. Ngashi: "Eho okeho, eyego okeyego," Mat. 5:35. Oshi thike pamwe: "Omuna gwamukweni ngele e ku mangitha oombale, ngoye mu mangitha oonkandja," nando pu na ngaa okayooloko okashona.

g) Elaka moka tamu tolakelwa Ombimbeli, olyo nali uthe amatumbulo gangapi taga pumbiwa motekisti pamukalo gwalyo gwokupopya. Etumbulo limwe alike melaka lyontumba, otali vulu okuhololwa nomatumbulo ogendji melaka ekwawo.

Etokolo ewanawa olyo tuu ndyoka li uvitikiwe ko nawa kaaleshi yalyo noinali kanitha edhiladhilo lyomekotalaka moka lya kuthwa mo.

Agehe ngaka omautho gamwegamwe twa holola mpaka okutala iilonga yatate Amaambo naakwathi ye kutya oya li tayi wilikwa kushike. Ngashingeyi omusita Amaambo, Epangelongeleka olye mu langeke meyakulo lyegongalo lya Elim, manga tapu ningwa elongekidho lyokutameka etoloko ekwawo kombinga yEtestamendi Ekulu.

Omusitagongalo Matti Amadhila ngoka a kala ta kwatha Amaambo moshilonga shika, oku li wo ngashingeyi melongekidho lyoku ka tsikila kombanda yomafuta.



Ondhopi yotango kombanda yomukanka oya li ya tulwa ko tangotango komumbisofi dr. L. Auala pamwe nomahambelondjimbo nomagalikano. Omumbisofi okwa indilwa natango kokangundulongekidho koshituthi oku ka uvitha melongelokalunga lyoshituthihambelolelo.

X X X X X X



Omuwiliki wOshinyanyangido M. Amukongo nomuhoololi Sh. Shayuka tava kundafana oshinyolwa nhumbi shi na okukala.

Okwa ya ndele itaka kala ko

Jesus eshi a tonga kuvo, okwa tambulwa meulu. Ndele okwa kala omutumba kolulyo lwaKalunga. Ovahongwa ova ya ndele tava udifa keembinga adishe, ndele Omwene okwa li ta longo pamwe navo nokwa pameka eendjovo nomadililiko pailonga yavo. Mark. 16:14-20.

Moule womafiku 40 eshi Jesus a nyumuka, okwa kala unene nokuliholola kuovo ta fiile oshinakuwanifwa shokuyelifa oshili yenyumuko kounyuni. Inashi holoka hano pamukalo wetumhakano ile sha dja mokuhashii sha, eshi mEhepaululo lovaitaveli aveshe, olo hali ifanwa oOvayapostoli, hali hepaululwa Oshoondaxa keshe eshi mwa tulwa oshitukulwa osho kutya:

Onda itavela ou a dalwa komunhu (okakadonna) kutya oye a fya nokwa pakwa. Okwa nyumuka mo moufi nde a londa a ya meulu, oko ta ka aluka a tokole ovanamwenyo novafi.

Eshi osho sha kala efina leudifo mokanya kovaudifi votete Jesus e liholola kuvo. Osho sha li efindilomo loukwashili meemwenyo dovapwilikini ovalimbililwi omo yo ovaudifi navo va li mo (Koneka ooKleopas mondjila yavo yoku-Emaus naTomas). Eudifo eli ola kala ongona tai ulula omadiladilo oonyuni ou wa itavela ashike efyo laJesus ndele otau patana enyumu laye.

Omolweyelifilo loshitwa eshi sha fimana, ova-hongwa otava pewa nokuli oshipango; Indeni ko mu ka udife oshili ei. Ov. 15. Jesus oku shi shii nokutya oku na vamwe va pewa ombubo, va futwa opo vaha hepaulule oshili yenyumuko. Oku na vamwe ovo va likolwa kepukifo eli, onghe Jesus ota kunghilile ku iwe, epuko eli li kumbululwe.

Ongeleka yopefimbo eli ngeenge oya hala okutala kutya otai udifa evangeli li li ngahelipi, nai shi mete nefinaudifo eli; Omwenyo wounyuni ou li muou a dalwa komunhu, a fya ndele ta nyumuka. Opo nee okwa londa keulu oko ta aluka okutokola, okupangula oonyuni. Jesus mwene okwe shi yelifa nokutya Etokolo laye oli na sha unene naava tava anye oku mu itavela.

Eshi hatu dimbulukifwa unene mefiku eli lE-londo lOmukulili, osho ealuko laye. Ealuko la-Jesus oko li li, osheshi oshitetekeli osha ningwa nale, kutya okwa ile. Eudifo lOngeleka monyuni wetu otali ulike unene kwaasho tashi ka wanifwa, osheshi oshi na oukwashili we liholola kutya otashi ka wanifwa diva.

Sebulon Ekandjo

Ekwatho lyOngeleka omolwehogololo lyOwambo tali pulwa

Ongeleka ya Anglikani noyOwambokavango, otadhi indilwa dhi kwathe okutseyithila aantu kutya opu na ekonakono lyopaveta tali ningwa mokati kawo, opo ku monike omadhina gaantu ayehe mboka ya li ya thiminikilwa mehogololo lyEpangelo lyOwambo petameko lyomu-mvo nguka.

Omasiku hamale ga piti po sho pwa li pwa ningwa ekonakono moshinima shika kiilyo ya-SWAPO pamwe nahahende David Soggot, ihe eyamukulo ewanawa inali adhika natango omoluumbanda waantu. (Tala enyenyeto lyaawilikingeleka moshifo shika.)

Omunashipundi gwaSwapo muNamibia, David Meroro pamwe niilyo yilwe yongundu naawilikingeleka yaali; omumbisofi R.Wood na dr. L. de Vries, oya tokola moshigongi shawo ku ningwe natango ekonakono manga Epangelo lya S.A. nolyOwambo inaalit sikila noapulanda dhalyo dhokutota ooveta, omolwonakuyiwa yaNamibia. "lilonga mbyoka yaa na uuyuuki mehogololo ndyoka, oyi na tango okwoopalekwa" osho oontokolwa dhoshigongi shika dha ti.

Aasitagongalo pamwe naalongi yoosikola dhomashasho nomakoleko, oya pewa oshimwiyu okutseyithila aantu ekonakono ndyoka tali ka tamekwa mbala ngiika muMai okupupalekela aagongeli yomadhina ya pewa oshimpyuyu shika, Sam Shivute, Ruben Hauuanga na Theophilus Kalimba. Hahende Soggot naye okwa pulandwa e ke ye kOwambo, okukonakona iinima mbika.

Palufo nduka, ayehe mboka taa gandja uyelele oya tseyithilwa nomukumo kutya itaa ka adhika nando kegeelo lyasha tali zi kEpangelo lya S.A. nenge lyOwambo. Osho oontokolwa dha ti.



OMASIKU GONKUMWE GA KUKA, NOMAHAMBELELONDJIMBO OTAGA TAMEKE

SHOKA TASHI KA NINGWA PONIIPA

Opwa tegamenwa nehwamo enene koombinga adhihe dhongeleka ya ELOK no-sho wo moongeleka dhilwe, ethiko lyesiku lyoshituthihambelesho shOshinyanyangidho pOniipa. Ayehe otaa galikana Kalunga andola ya mone ompito yokuthika ko. Tse wo Aaniipa otatu mu halele ompolo ndjoka.

Oshituthi twe shi tegeleleni osha pewa edhina lyasho; **Omuwa okwe tu ningile iinima iinene, otse notwe shi nyanyuki-lwa**, patekisti yEpisalomi 126:3 Omalongekidho ogendji oga pwa ngashingeyi, otwa tegelela owala esiku li thike.

Okangundulongekidho kehiyo lyaayenda, oka li ke na ehalo okuhiya ando omuntu kehe polwe mwene. Shika itashi vulika. Onkene okwa ithanwa ngaa oonima mpaka noongandi mpeyaka, mboka pategamenno taa ka kalela po oongundu dhawo oonene itaadhi ka vula okuthika omolwontumba nongandi.

Olitulugi (eyakulo lyomoshiyambelo) otayi ka ningwa kaasita yatatu; omuwilingeleka K. Dumeni, omusita gwengalo lyaNiipa S. Mvula nokomutonateli-shitayingeleka shaKavango N. Sironko. Omuvithi melongelokalunga ndika omubisofi dr. L. Auala.

Manga elongelokalunga inaali tameka, tate Matti Endjala opo ta adhika nale nongundu ye yolwiimbo pokana kombako yokupopya, ta ningi iinima ye. Ngele ino mu mona nale, ngiika owe mu uva ngaa shoka ha ningi.

Opwa hiywa aayenda oyendyi ya simana ye vule 20, yamwe mboka yokokule lela, oyo mboka taa ka za kOsoomi nokOngongahangano yAakwaluther. Amushanga Ndjai gwOngongahangano yAakwaluther Dr. Carl Mau na omusitagongalo Leino Hassinen gwaSoomi, oya tegelelwa ya ninge wo aapopithi moshituthi.

Esiku lyoshituthi limwe alike, ihe okangundulongekidho oka ningi nawa sho ka utha oshituthi shi tameke petameko lela lyesiku ndyoka. Okuza pondatu yuusiku, pethimbo ndyoka naanaa etopo lya li lya uvika, opo mpoka shaangoka e na sha okuligola nenge okunuka, ote shi ningi, sigo potundi ontumulongo yongula elongelokalunga sho tali hiti.

Ileni tu shi ningeni, oshoka Omuwa okwe tu ningile iinima iinene.

SSSS

OSHIKETHA MEDHINA LYASORSA

Omumvo gwa piti aalongi aakiintu oya dhike oshiketha medhina lyomulongi gwaalongikadhona omukulu kuku Anna-Liisa Sorsa (SORSA FONDS) oku mu simanekela oshilonga she shethimbo e-le. Aalongi aakiintu oyendji, oya gandja iigandjwa yawo koshiketha shika nomadhina gawo otaga ka landula mpaka.

Opwa uthwa wo kutya kehe gumwe a hala okugandja sha koshiketha shika nonando a kale kee shi omulongi nenge omulongi omukiintu, ota taambwa nuupu. Oompango nomautho goshiketha shika ogo ngaka:

1. Oshiketha "Sorsa Fonds" otashi longithwa owala mosekundosikola yaKahao.

2. Iihohela (rente) mbyoka tayi zi mimaliwa mbyoka ya gandjwa noya pungulwa mombaanga, otayi ka longithwa pehulilo lyomumvo kehe.

3. Omukadhona ngoka ta monika omunandunge mokwiilonga nomudhiginini

nomunamikalo, oye ta ka pewa epandulo niimaliwa mbyoka. Itapu talwa mpaka kutya ogwOngeleka yini, aawe.

4. Oshigongi shaalongi yomOsekundo-sikola ndjika mewiliko lyomukuluntu, oyo taa hogolola omukadhona ngoka ta pewa epandulo. Otashi ningwa aluhe petameko lyaKotoba omumvo kehe.

5. Edhina lyomukadhona ngoka a pewa epandulo otali ka tseyithwa miifo yOngeleka, noyoshigwana. Osho wo taku ka tseyithwa kutya oshiketha otashi taamba natango iimaliwa kaagandji.

Sorsa Fonds oku na elalakano okuhwamitha oomwenyo dhaagandji sho taa mono nkene ta kwatha nokuhumitha komeho oshigwana. Pamukalo nguka otatu dhimbulukwa oshilonga shameme Anna-Liisa Sorsa mokuputudha aakiintu yoshigwana shetu mOngeleka yetu. Ooranda 263,35 odha monika nale nokuli.

**Omautho ga shainwa kaalongi;
Liina Mpanda na Viktoria Shituula.**

1 Ester	Nd. Nakale	Ekoka—Kongo
2 Hans	D. Namuhuja	
3 Emilia	Shikomba,	Andjamba
4 Sofia	Antindi	Andjamba
5 Laina	Ndakeva	Onheleiwa
6 Gerda	Hasheela	Onheleiwa
7 Loide	Sakaria	Onheleiwa
8 Maria	Nafidi	Onheleiwa
9 Rauna	Nashindengo	Endola
10 Rakel	Hasheela	Endola
11 Elina	Nghinete	Oshela
12 Teopolina	Ndjambi	Onyanya
13 Leilah	Nekongo	Onyanya
14 Hilde	Kahola	Oshali
15 Amalia	Nangolo	Oshali
16 Sara	Mwapopi	Oshali
17 Petrina	Haihambo	Oshali
18 Rebekka	Mbidi	Oshali
19 Foibe	Kaulinge	Tsandi

20 Irja	Nangombe	
21 Rakel	lindongo	Tshandi
22 Lilja	Itenge	Tshandi
23 Viktoria	Amukugo	Tshandi
24 Ndeshetelwa	Kaulinge	Ondongo
25 Hileni	Naikaku	Ongwediva
26 Maria	Ngonga	Ongwediva
27 Ester	Namwandi	Ongwediva
28 Olivia	Nghitolelwa	Ongwediva
29 Elina	Kaulinge	Ongwediva
30 Selma	Ndatega	Ongwediva
31 Justina	Andreas	Nehale Elombe
32 Ruut	Nambili	Oshikango
33 Lahja	Nghatanga	Oshikango
34 Hilda	Hamutenya	Oshikango
35 Marjam	Naukushu	Oshikango
36 Viktoria	Mwahafa	Oshikango
37 Viktoria	Kavungo	Oshikango
38 Henderina	Shipunda	Omundaungilo
39 Johanna	Kandume	Omundaungilo
40 Ester	Nghililewanga	Omundaungilo
41 Ndapewa	Amukeshe	Omundaungilo

42 Luise	Ndahangwapo
43 Ester	Mutileni
44 Albertina	Kashihakumwa
45 Beata	Kashihakumwa
46 Teopolina	Kaulinge
47 Johanna	Mwandingi
49 Pirkko	Mwandingi

Omuntele
Omuntele
PK. Omungwelume
PK. Omungwelume
PK. Omungwelume
PK. Omungwelume

Kongo



Omufitaongalo tatekulu Vilho Kaulinge natango okwa indilwa a ka udifile oshivilo shehambelelo lOshinyanyangido. Shiimba pomhito ei ota ka fimaneka eehedi daKalunga eshi da longa oikumwifa, ngashi kwa li e di twa omukumo fiku loshivilo sheefya.

NANGAME NDA MONO OMPITO YOKUTALELAPO

Omapya getumo mOndonga oga totwa nalenale, ihe ngame kanda li ndi imangulula oku ga talelapo. Nuumvo mowiimbo lwetu mOshigambo, omwa tukuluka ehalo tu ye kepya limwe lyetumo. Otwa hogolola okuya kOnankali.

Otwa pangele ompangela tu ye pamwe nAanayena mboka omapenda, haa yi ko shito. Esiku lyotango IyaMaalitsa otwa pitula ihe Aanayena. Otwa adha ye tu tegelela nenyanyu enene poshipangelo shawo, ongundu onene ya gongala, ootate, oomeme, aagundjuka naanona. Kumwe oya li 50. Tse otwa li 18. Egongalo alihe IyaNayena konyala olya ningi kuumme ketumo.

Mondjila yetu yokuya ko otwa tsakanene natango nAanandjokwe yu uka ko, nomukweyo gwiilhauto gwa ningi omule. Okwa ningwa egalikano lyepandulo sho twa thiki nawa, natate Shigwedha, omutonateli gwoshitayingeleka, okwe tu fatululile onkalo yaahoka, kutya epya Iyaahoka, moka hamu limwa iilya yokuliwa kAayeleele inali longwa nuumvo.

Ongula sho kwa shi osha li Osoondaha, otwa meneka tu ka uve elongelokalunga mOnayena. Esiku ndyoka okwa ningwa oshituthi oshinene shekondjelo lyepandela lyedhina E.L.K. IyaAashigambo. Aanayena oye li tu yugu nooranda R101,03, ye tu vule nooranda R39,37. Elalakano lyokugongela iimaliwa mbika pamukalo nguka, okulongitha ashike moshilonga kehe sheuvitho Iyevangeli, shaampoka tapu vulu oku yiwa. Epanдела ndika ohali vulu okwiithanwa li talwe megongalo lyontumba nenge li kondjelwe.

Twe li thigi kOnayena notwa shuna nuunyala wa kaka kOshigambo. Ihe otatu li yuulukwa unene, notatu ke li kondjela mbala mOshigambo. Ngoka we li hala, pula nawa kongundu "Eluwa" mOshigambo, otatu li ku etele li ku yambeke.

Indeni mo miilonga ye, Inamu tila Omuwa opo e li.

Iilonga ye yi simane, Inamu tila Omuwa opo e li.

Ituleni miilonga yOmuwa ngo, Inamu tila Omuwa opo e li.

Inekeleni mwaashihe, Omuwa ngo, Inamu tila Omuwa opo e li.

E. Nd. Hamunyela

VALDE NGHIDIILUA, TSUMEB, ota nyola ngaha: Kovaleshi vOmuukwetu nokookaume amushe mwa kwafa koolonga yOshinyanyangido naava mwa kala metungo lasho. Kunye amushe koshilonganghono sheni mwe shi longo ohai mu halele eenghono daau wokombada, e di mu pe dokolutu nokomwenyo omolwooshilonga shaye. Nande pe na ovatondi novashindadi, Kalunga oye omunanghono, nomonghenda yaye noshali shaye ote shi yandjele aveshe tave mu dimbulukwa. Ote dimbulukwa tatekulu Vilho Kaulinge eshi a popile pomhile a tile: "Tu hengeri." Kundweni nombili.

Satana a hanyenwa muAngola

Onda monene omhito yokutalela po epya letumo mOnamayaka. Onda tala kwi-nyana eshi evangeli tali udifwa paife nemanguluko. Satana ou a li te li kondjifa e li movapangeli Ovaputu, ondi wete kutya omailikano ovaitaveli aa va kala tava ilikanene Angola, kutya satana oo e li mo, Omwene ne mu hanyene, okwa udika.

Onda li nda ninga eudifo patekisti yefiku olo mOnamayeka Joh.2:1-11, unene etumbulo laMaria eshi ta lombwele Jesus: "Vo kave na omaviinyu." Ovaitaveli vakwetu, omwa kala nokwiilikanena Angola kutya kave na omaviinyu, evangeli, ovaudifi, nde paife omaviinyu ove a pewa nee. Ova pewa Ombibeli yelaka lavo (Oshikwanyama) ova pewa yo ovafita novaevangeliste. Omundilo wvngeli wa tema. Elaka lanakufya Lukas Namalemo wOkoshitota, e li popya pOngeleka yavo eshi ya xwikwa po kOmu-putu, okwa tile: Omundilo ou wa tema ngaho, haNgeleka tai pi nande, evangeli tali xwike oupaani mOputu.

Paife evangeli ola tema shili muAngola. Tatekulu Noa Kaukungwa, okwa tile nomufindo, "Evangeli laKalunga nali mbolokotele mo nomuAngola omo." Paife osha wanifwa okudja modula 1974 fiyo oneudo evangeli otali mbolokota, itali honyaeke vali. Otali kunguluka la fa efundja.

Eshi nda aluka onda lele pOkangeleka kOimbudu mOndjiva, Okangeleka kawa, omuti womwoolo. Omo hava ongala nou-diinini. Ova uda ko ondjovo oyo tai ti: Mu minikile ngaashi eenyofi mokati komulaulu. Eshi oshi shii okupandulilwa Kalunga eshi a uda omaidilo etu. Natango tu twikileni okwiilikanena evangeli li tondoke li ye neembinga adishe dounyuni.

**Ev. Filippus Nakanwe
Engela.**

Otwa yuulukwa emanguluko lyokolutu nolyokomwenyo

Aanamibia ye thike lwopo 2,500 mOlange oya li ya gongala moshigongi shawo shotango shokomumvo muMaalitsa okukundathana onakuyiwa yeve lyawo. Ooveta dhokatongotongo ndhoka dha dhigininwa momahala agehe gomayakulilo gaantu, okwa dhimbululwa dha yonagula ombili yaantu mevi.

Tse otu hole shili ombili, ihe okatongotongo hoka twa tulwa muko, otaka eta uukolokoshi. Tse otwa hala okumanguluka tu kale tatu longele Kalunga ketu memanguluko lyombili noyoshili.

I. Kalenga

Enyenyeto lyAambisofi

"Onakuyiwa ndjoka tayi taambwa komuntu kehe, kayi vulu okutungilwa komukanda gwokuhwela aantu mongumbu, nosho wo kape na nando Epangelo hali shi fululako nokulela aantu yalyo niifundja."

Osho sha popiwa kaawilikingeleka yatatu muNamibia mehokololo lyawo ndyoka taa yematele Epangelo lya S.A. sho tali kebele nowino mboka ya hala okukonakona paveta ehogololo lya ningwa mOwambo ngele olyoshi.

Aawilikingeleka ya nyenyeta oshinima shika oyo; omumbisofi Richard Wood gwaAnglikani, omuwilikingeleka dr. Lukas de Vries gwa E.L.K. nomumbisofi dr. Leonard Auala gwOwambokavango.

Eti 5 Apilili 1975 hahende David Soggot na amushanga gwe, oya tukile nondhila okuza kOvenduka ye ye mOwambo ya kundathane naantu mboka ya thiminiki-lwa kehogololo. Ehokololo olya ti kutya oyi ishunine inaa mona uyeyelele wa gwana mboka ya halele, oshoka aantu kOndangwa oya tila ko sho ya dhimbulukwa omadhengo gaaposi omumvo 1973 muAguste. Epangelo oyi indike okkundadhana dhi ningilwe palwe.

"Oohahende odha li dhi na okukala dha manguluka, taa kundathana nomuntu kehe ngoka ya hala, opo ya konakone nawa omahokolo taga popiwa gomathiminiko pethimbo lyehogololo." Osho ya ti. Nokutsikila ko ishewe kutya;

Ehongo lopakelefiti la patwa filu

MuZaire omwa dja onghundana kutya ehongo loukelefiti meefikola ola xulifwa mo filu noyonhele opwa tulwa ehongo lomifuululwawutuko lohilongo. Ondjidikila yehongo loukelefiti oya tulwa po komupresidende woshilongo, omushamane Mobutu Sese Seko.

Zaire, nale sha ifanwa Kongo, oshi na ovanhu eemiliona 23. Konyala etata lavo ovakelefiti. Ovakatolika ove li mo ve dule eemiliona 7. Inapa pita efimbo lile eshi muZaire omupresidende kwa li e lingwadjala mumwe nOngeleki yaKatolika omolwonghedi yaMobutu yokuninga ashishe oshiafrika.

Mobutu okwa lundulula edina laye Joseph, li ninge Sese Seko nedina lohilongo, Kongo ii ufanwe Zaire. Okwa fininika ovakelefiti aveshe moshilongo va shikule omukalo ou, nelalakano lokuxulifa po edimba alishe la nyika oupika wopakoloni. Eshi osha kwatelele mo yo oilonga ihapu yopakriste ye etelwe kovatumwa.

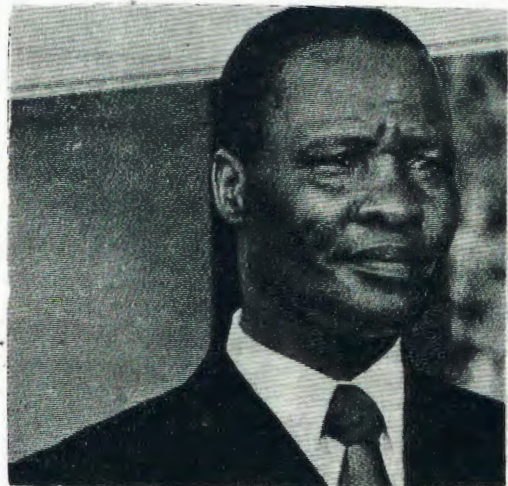
Ehepu eli la dja muKinshasa, oshilando shEpangelo laZaire, ola ti, kutya Komufala wehongo lohiwana, Mabolia Imengo Tra Bwato, okwa shiivifa nale muDesemba 13 ta ti, ehongo alishe lopakelefiti meefikola doshiwana, otali mwene kwa okudja lotete laJanuali 1975.

Okwa ti natango, kutya ponhele yasho, otapu tulwa oprograma ipe yehongo ya fikama moimuna itatu; ehongo loukwashiwana, ehongo lopolitikwa nehongo leenghedi dOvazaire.

Odjonghundana, AZAP, yEpangelo mekwatafano noshinima eshi oya ti: Mobutu oku li

Omalelo giilongo nago wo otagi ilundilitha moshinim shika kutya opwa ningwa shili omathiminiko mehogololo, sho itaga pitika oohahende dhi kundathane nago.

"Methimbo edhigu lya tya ngeyi lyuupolitikwa waNamibia, osha simana unene omalalakaneno agehe taganingilwa aantu, ga ningwe muuye. Onokuyiwa tayi taambwa komuntu kehe kayi vulu nando okutungwa nomukalo gwiineya," aambisofi ya ti.



Kaiser Matanzima waTranskei okwa indila a pewe elipangelo ku S.A. 1976. Oshifo "The Stra" osha pula omapulo aa: Transkei eshi tashi manguluka inashi tambulwa kounyuni, otashi ningi oshilonga shihee na oshiwana? Ota kala oshitukulwa sha S.A. moimuna yome ni lohilongo, ile otashi manguluka fimbo eemiliyona dasho dihapu da kufwa oukwashiwana ku S.A. ngashi sha ningilwa Ovajuda kuHitler muNdowishiland? (16-4-1975)

Mesias nongudupangelo yaye oi li Ongeleki. Komufala woinima youpolitikwa mEpangelo omushamane Engulu, okwa ti: Edina laMobutu otali holoka mokati komadina ovakulu vonale voshilongo nokwa tumwa kuvo e ete ombili, eudo liwa moshiwana nohole youmwainafana.

Ye ta twikile ta ti, Mobutu omuprofeti nongudupangelo yaye oyo eitavelo letu. Ehokololo otali indile ovahongifikola aveshe moshilongo ve litale nokutya voo ova tulwa po va ninge Ovayaposteli vehongo laMobutu. Omudo wa dja ko Epangelo laMobutu ola yandja oshipango oshivilo shaKrisimesa shiha dimbulukiwe vali moshilongo, ndelene shi talwe efiku longaho loilonga.

Omubishopi a kula Joseph Malula wongeleki yaKatolika okwa indila ovanashilonga aveshe va ye muukumwe weilikano, opo va pewe omatokolo e na oshilonga molwonakwiwa yoshilongo shavo.

(Southern Cross 19. 1. 75.)

ligongi nookursus menongelo lyaayakuligongalo mEngela 1975

1. Okursus I yetsikilo lyaevangeliste; Febuluali—Mai 1975.
2. Oshigongi shaadiakoni ya ELOK; 17-23.2.1975.
3. Oshigongi shaayakulidiakoni naakulupe yomimvo okuza 60 yoshitayingeleka shOukwanyama; kuuzilo woshana shEngela; 5-9.5.1975.
4. Okursus yaawiliki yoomeme 19-30.5.1975.
5. Oshigongi shoohu nooyina yaakambelindunge 2-6.6.1975.
6. Oshigongi shaakiintu aanangesefa 21-25.1975.
7. Okursus II yetsikilo lyaevangeliste; Aguste—Kotoba 1975.
8. Oshigongi shaayakulidiakoni naakulupe yomimvo okuza 60 yoshitayingeleka shOukwanyama; uuninginino woshana shEngela 8-12.9.1975.
9. Oshigongi shoohu nooyina yaakambelindunge 22-26.9.1975.

Omukuluntu gwEnongelo
lipinge Kristof Shuuya

INATU SHI DIMBWA NANDE KATU NA OITYA YA WANA EPANDULO

Tate Andreas Kanhalelo, Omundaungilo, okwe tu ningila oinima inene 1973, eshi a ifana oukadona aushe wa kulupila moilonga i lili noi lili yeyakulo nomonghalamwenyo, nde te va ningile oshoongalele.

Nghe twa dalwa tu shi mone, otwa li hano she tu hafifa neenghono, unene tuu eshi twa dulu okumonafana navakwetu, vamwe tweliyefa nale. Otwa monafana nde hatu twaafana omukumo, hatu kolekwa fye hatu kolekafana nokunyatipalekafana moita yOmwene.

Otwa hambelela nokupandula Tate Kalunga ou a pa ovanhu vaye omadiladilo a tya ngaha oku tu ongela. Tate Kanhalelo itatu mu dimbwa nande, osheshi okwe tu ningila oinima inene. Kakele keifano nelongekido, okwa kufa eliko lomeliko laye, oho ve noikulya aishe, nde te liyandjele li liwe kovanhu vamwe ina shiiva ooxe ile ooina.

Meme Viktoria Halweendo, omukulukadi wata-te Kanhalelo, okwe tu tambula ngovana. Otwa mona ehafo linene moshipala shaye. Eyakulo laye oixuna. Meme na tate okwa li ve litukula pokati ou ta kufa onhele yaMaria, ou ta kufa yaMaarta.

Katu na oitya yokuhokolola epandulo letu. Otu udite Tate Kalunga oye e mu pa omadiladilo oo mu tu ifane fye ava twa dinika mounyuni omu, hatu yolwa fye hatu shekwa. Nani ope na ava nye ihamu tu yolo. Kalunga ne mu kwafe meyakulo leni ye na nangeke noupuna eliko leni mu li longife pahalo laye.

Vakwetu ava muha li ko omolwomaimbo onhumba noongadi, ohatu mu halele ngeno nan nye opo mwa li, Okwa li ovakwaita va longekidwa kuTate Kalunga ve tu dilike. Apa ohatu holola paxupi imwe oyo tai hunga ko novadili:

Beata Ishinda: "Omwene ohatu i peni, ove u na eendjovo domwenyo?"

Andreas Kanhalelo: "Omwene ota amene ava vehe na omupopili. Ame omunghundi, Omwene kwafe nge."

Vilho-Kaulinge: "Holeni Kristus." Ye Aili Mwatotete ta twikile ko: "Tu Kaleleni Kristus."

Neendelekelama oko da fikile. Imwe tai ti: "Natu hambeleleni Kalunga molwouwa ou he tu pe efiku keshe." Oya li ya tumwa ku Lidia Urho.

Omundilo wohole yetumo wa xwamekululwa yo kwinya. Oikuni imwe: "Ofyeni epata la hoololwa, natu hambaleleni Kalunga. Eteyo la pya, nde ovahongi kave po. Indeleni hano Omwene a tume ovahongi meteyo."

Kaino Stefanus osho a pandula, a wedwa ku-M. Nghoshi ou a ti: "Vakulupe vakwetu, tu kondjeni tu diinineni Omwene tu longeleni Omwene."

Otwa dimbulukwa yo eendifonghenda laKalunga, ngashi sha holoka momatumbulo a Elise Witting: Efilonghenda laKalunga ole tu xumba ta nolo le tu fikifa naaku kOmundaungilo."

MOuvalelo Uyapuki otwa djalekwa eendifonghono, opo tu ye mondjila. Nepandulo otwa ya ngaa nee hatu lipula: Mmm, mbela otashi ka ningwa tuu vali, ile osho shiveli nosho onghelo?"

Nande okafopandulo aka oka li ka kanena mondjila pokati kEngela nOnandjokwe oule wodula netata ohatu ka fikifa ngaho kunye, ovafimanekwa. Epandulo ihali kulupa. Omukwetu ne mu fikifile ekundopandulo eli.

Ponhele yongudu,
Aune Shilongo na L. Hamunjela

Omupresidende Kaunda ota ti omumvo 1975, otagu kala omumvotokolo muumbugantu waAfrika. Etokolo lyahugunina otali ningwa pakulongitha omukalo gwombili, nongele inagu tompola sha, nena okulongitha oonkondo.

"Zambia otaka kala aluhe meitulomo, hashu nee ngele pambili, nenge pwaa na ombili," osho a ti.

(Die Suidwes Afrikaner 7/3/75)

OMUKWETU

Oye oshifo shOngeleka onkwaevangeli paLuther yomOwambokavango. Ohashi nyanyangidhwa mOnilpa. Omukuluntu gwoshifo omumbisofu dr. Leonard Auala. Amushanga Rev. Sebulon Ekandjo.

Ondando yoshifo komumvo muSuidwes nomuAfrika alihe R 1. 00 kombanda yomafuta R 2. 00.

Gondando nomambesitelo naga tumwe kOmukwetu OnHpa; P/B. 2013. Ondangwa.

Omatsyitho agehe gomuntu mwene ohaqa futiwa kumwene.

OWAMBOKAVANGO CHURCH PRESS
PRIVATE BAG 2013, ONDANGWA S. W. A.
9270