



# OMUKWETU

No 2

JANUALI

1965

## EENGHONO DEVANGELI KADI NA OUMBADA

2 Tim. 1: 7-10



Eongalo la Kristus Jesus, olo oshilonga sha Ye mounyuni omu, osheshi olo tali twikile oshilonga sha Ye mounyuni omu. Eongalo otali longo meenghono dOmhepo Iyapuki oyo tai tililwa ovahongwa, ndele tai va pe onyati i dule oyo yoshito.

Omhepo oye uya okuwanifa nokupameka eudifo levangeli mounyuni omu, onghe otai eta ohole neenghono neendunge meongalo. Omhepo ei otai tu pe eenghono okuninga ovana va Kalunga Rom.8:15, omokuitavela Jesus Kristus Joh.1:12.

Evangeli oli neenghono, osheshi otali fininike omukriste okulihepaulula noku li udifa shamha tu tali kala mu-ye. Alushe ota kala e udite oshikolo omolwevangeli, ndelene okeenghono dOmhepo Iyapuki, osheshi evaangeli olo eenghono da Kalunga odo tadi kumwifa, tadi longifa ovana vovanhu mounyuni omu, ndele otali hupifa oyomhunga dounyuni ou moku li itavela Rom.1:16.

Loovene evangeli moku li udifa mounyuni omu, ohali mangifa ovanhu tava mangwa kovana vomilaulu Ef.3:1. Nande ohali mangifa ovanhu ngaha, olo tuu eenghono tadi hupifa, osheshi "oshinima shiwa ihashi monika nokapala ka yela." Mevangeli omu na eenghono da holekwa momaudjuu nomomahepeko, momadino nomoma-taatao. Ndele nande ongaha, oumbada kau mo, osheshi Omhepo ei tai longifa ovanhu kai na oumbada, oyo vene hai te po oumbada. Onghe, li yandjela evangeli 2Tim.2:3.

Ou e liyandjela shili evangeli nouta longifwa kulo, ta longo alushe meenghono da lo nomeenghono dOmhepo, oku udite alushe a hupifwa nande oku li mounyuni omu. Oku udite a hupifwa nande ye mwene ine shi lilongela. Meenghono devangeli omu na alushe oonyenye wonghenda ya Kalunga oo tau fininike oonakulimakela va longe neenghono da yo adishe va mana mo. Hano ava

ve hole Kalunga, otava mono oupu-na ou wa holekwa, osheshi ohole ya Kalunga kai na oumbada oyo vene nokuli tai te po oumbada. Hano osho va ifanenwa kehalo la Kalunga Rom.8:28, eshi osha ningwa muJesus Kristus keenghono dOmhepo Iyapuki, osheshi Omhepo ohai kufa po oimbide aishe. Meenghono dOmhepo itatu imbwa nande oku sha, okukala koshi yeenghono dihe wetike kovana vounyuni ou ovo ve noupu ashike oku tu manga Ef.1:4. Ediladilo la Kalunga oku tu hoolola olo eli eshi e tu hoolola mOmona tu kale ovayuuki novayapuki 1Tes.4:7.

Ovakwetu, eshi twa pewa oshilonga eshi shinene sha Kalunga, inashi shikula nande ouwa wetu ngeno u li momesho a Kalunga; ndelene, esheyo la Kalunga mwene eshi e tu sheya meshasho lomeva nOmhepo nomundilo, osheshi Omhepo otai pamekifa evangeli 1Tim.3:4-6.

Ovakwetu! Oumbada wokutila ondjila yomahepeko omolwevangeli, owa kufwa po kuJesus Kristus Omwene wetu ou emanya lehupifoletu, ou ta hanauna po eflyo alushe. Hano, ino tila shamha wa itavela evangeli ndele to li hepaulula nokanya koye, ndele to itavele shili nomutima aushe. Kalunga okwe ku longikidila efindano muJesus Kristus Omwene nokOmhepo yaye oto kolekwa kevangela, u kale meteelelo lomwenyo waalushe. Eenghono edi dihe wetike otadi ku humbata no mefimbo eli. Kala hano nomukumo ndele lineekela Omwene, okwa hala oku ku kwafa pmafimbo oye aeshe alushe fiyo alushe.

N. H. Shinana



Januali 1965

## WAA NOMUTANDA KU NOONGOMBE

Ngele kape na omitanda nena kape na etegelelo pu ka kale oongombe, osho wo moshigwana ngele kamu na aagundjuka nena kape na etegameno pu ka kale oshigwana. Aagundjuka oyo oshigwana shokomeho.

Oshigwana shAawambo osho oshigwana shi nelago. Elago lyasho olya zi peni, otali zi peni, notali ka za peni? Oshinima shotango otashi kala shi nelago, ngele shi na Omuwa. Oshoka "Oshigwana shi na Kalunga kasho Omuwa oshi nelago." Moluthithiya nduka oshigwana shi nompito yokuhuma komeho miinima yopalutu wo. Ngashi okulikola uunongo wi ili nowi ili. Ooskola dhaanona otadhi monika mOwambo ayihe. Ooskola dhaamati nodhaakadhona opo dhi li notadhi kwatha mokuputudha oshigwana shokomeho. Ooskola oonene dha holoka nokuli. Elago oli thike peni?

Ngashingeyi opwa fa haantu taa kongo ooskola, ihi ooskola tadhi kongo aantu nokuli nomiihwa. Otatu adha aakuluntu oyendji taa ti: **ANDO OKWA LI HAKU SHUNWEE!** Oshoka oya dhimbulula aanona naagundjuka yethimbo ndika oyo aanelago sho ye nooskola tadhi monika apehe. Ompito ya tya ngeyi sho inaye yi mona otaa lalakana taa ningi shamukata na kale po mokutuma aanona yawo koskola. Kape na mbudhi, nando ope noluhupo, nonkayi, oshoka ye shi shi, kokule ihaku thikwa ngula.

Onke owa ninga nawa sho wa tokola u lithe, u tse u teke, opo Johannes na Marta ya mone ompito yokunongekwa. Dhiginina shili, oombwa odhoye dha kwata.

Tate na meme, oskola otayi tameke ngashingeyi. Levi a fa e li natango kohambo? I, Kandiwapa sho a li koha a galuka kwa fa kwa noskola? Ye Martin sho a li kohambo ya N.N. oto dhiladhila a kale ko nonuumvo? Yakweni taa pe dhawo! Aanona yoye sho ye li ngaaka sikulimwe okulesha hashankali huka okunyola nkumbwa

## OTANDI KU YELEKE NA SHIKE?

Mat. 11: 11 - 19

Omuntu ngoka ta hakele uudhano okwa tegelela yakwawo ya dhane. Mboka taa imbi omaimbilo guupongo oya hala aakwawo ya pongole yo ya lile. Na ngele ku na ngoka ta kongo ekwatathano naantu, okwa hala ehanganano nombili. Omuwa. Kalunga ota kongo aantu ye noohapu dhe. Oohapu dhompango nodhuuprofeti. Oohapu dhomalondodho, dhomaheko, dhomagando, dhomapukululo nodhevangeli.

Ota tumine aatumwa ye kaashitwa aakwawo yo ya fale omalaka gombili Kalunga te ga gandja maantu ye.

Oshilonga shika Kalunga okwe shi ningila okukonga uuwanawa waantu. Ihe nando Kalunga ta ningi ngeyi ope na yamwe mboka Omuwa Jesus e ya nyengwa. Omboka taa pulwa ku Ye: "Otandi ku yeleke na shike?" Otaa igidhilwa evululuko lya shili omu Jesus. Ombili ya shili nomwenyogwa aluhe omu Jesus. Edhimopo lyoondjo oli li mu Jesus. Ila kOmukulili. Mu taamba nena.

Ihe, otashi vulika natango ku na ngoka kee wete ngele opu na shoka kale Oye, manga Jesus ina tya: "Onde Kalunga nOmwana Jesus e shi mu ningila. Omuwa Jesus ta ti: Otandi ku yeleke na shike.?"

Inatu etha Omukulili e tu tumbulile ngashi oshigwana shAayuuda: "Okwa livalo nduka otandi lu yeleke na shike?" Omuwa Jesus nge te tu tumbulile ngeyi itatu kakama? Omuprofeti gwOmuwa okwa kala nokupopitha oshigwana shi kale nawa na Kalunga, ihe a fa a nyengwa, onke ta imbi: "Ongame nda hala okwiimba ndi tange kuume kandje ngaye ndi imbe eimbilo lyOmuholike gwandje, olyoshilonda shandje shomiviinu." Jes. 5: 1 - 7.

Johannes Omushashi okwa li a tetekelele Omukulili, a longekidhe aantu oku mu taamba. Ashihe shoka Omuwa Jesus te shi tu ningile, osha hala oku tu longekidha tume mu tsakaneeke ngele te ya mesimano lye naayengeli ye aayapuki.

Omuyapostoli Paulus ta ti: "Nenge ku shi shi uuwanawa mbuka wa Kalunga tau ku kongo wi itedhulule? Rom. 2: 4, 5.

Omuwa ne tu kwathe kee tu ekelele muukukutu woomwenyodhetu, ihe Ombepo ye e tu yelithile oohapudhe nekongo lye sho te tu kongo tu kale Oye, manga Jesus ina tya: "Onde ku kambadhala nale, ihe ngoye ino hala. Otandi ku yeleke na shike?"

H. S. Shongolo



*OJesus, okuume tu dhiginina.  
Aanona aamwoye tu siikilila.  
Eputudho lyetu lyoopaleka wo.  
Oondunge oonkulu dhi shituke po.*

niipwe! Omuntu sho ta ka hala okuya kUushimba ota ka leshelwa, okunyola huka esiku a yakula ombapila aniwa ya za ku he okwa tsimika ontsi yi ka leshwe yo yi yamukulwe."

Ohole ya tate noya meme pethimbo ndika otayi monika sho ta tumu omumati nenge omukadhono gwe kenongelo nokuli manga e li po omushona. "Ne mu ya tonatele wo ya putudhilwe meitaalo nomokutula Omuwa, yo ya nongekwe okutseya omalongo guukriste, opo ya dhiginine esilohenda moka ya taambelwa mo meshasho eyapuki."

Omutse ngele ogu li kumwe nothingo tate na meme otaa ka mona iiyimati yeihepeko lyawo. O, otapu ka kala aantu ya nyanyukwa.

Aakuluntu aaholike, oskola oyo uuyamba woshigwana, unene pethimbo ndika. Ino etha omunona gwoye a ninge "ondjapeki" pamwe sho te ke ya ta adha omadhila ga tutha?

Okukala nawa kwoshigwana neputudho lyasho otali pitile nondjila ya za miipundi yoskola. Aalongi Kalunga ote tu pe, onke tuma, kumagidha. U shi Kalunga ota dhimbwa ekondjo lyoye?

# OKAADJNETU



## AASI MOLUKONDA 1963

	a	si	1.	1.	1963
Selma Katangolo			1.	1.	1963
Selma Nampueja	--	1.	1.	--	--
Andreas Angula	--	3.	1.	--	--
Liina Eelu	--	11.	1.	--	--
Amaanda Amunjoko	--	24.	1.	--	--
Petrus Nanjemba	--	25.	1.	--	--
Maria Amakali	--	25.	1.	--	--
Andreas Mateus	--	13.	2.	--	--
Jonas Kondjila Immanuel	--	7.	3.	--	--
Kristof Josua	--	8.	3.	--	--
Elieser Shifotoka	--	18.	3.	--	--
Petrus Patrobas	--	22.	3.	--	--
Shiguedha Tomas	--	22.	3.	--	--
Aina Tegelela Abner	--	26.	3.	--	--
Augustus Johannes	--	3.	4.	--	--
Paulus Kautushi Kristof	--	11.	4.	--	--
Frida Angula	--	16.	4.	--	--
Hileni Hofni	--	18.	4.	--	--
Justus Josafat	--	22.	4.	--	--
Andreas Paulus	--	8.	4.	--	--
Andreas Sakeus	--	14.	5.	--	--
Andreas Pinehas	--	20.	5.	--	--
Johannes Andreas	--	29.	5.	--	--
Erastus Ananias	--	2.	6.	--	--
Linda Filemon	--	2.	6.	--	--
Elisabet Tomas	--	15.	6.	--	--
Andreas Amadhila	--	8.	7.	--	--
Aksel Jesaja	--	14.	7.	--	--
Samuel Andreas	--	2.	8.	--	--
Maria Elago	--	3.	8.	--	--
Ruusa Festus	--	8.	8.	--	--
Liina Shinteua	--	7.	8.	--	--
Anna Jason	--	11.	8.	--	--
Johannes Nambili	--	17.	8.	--	--
Petrus Nekoto	--	17.	8.	--	--
Monika Shiguedha	--	25.	8.	--	--
Jekonia Namutenja	--	26.	8.	--	--
Viktoria Johannes	--	12.	9.	--	--
Delila Tomas	--	6.	9.	--	--
Filemon Ambinga	--	8.	10.	--	--
Viktoria Nuukuaau	--	31.	10.	--	--
Paulus Petrus	--	1.	11.	--	--
Oiva Johannes	--	5.	11.	--	--
Alfeus Shiuaja	--	28.	11.	--	--
Frida Alfeus	--	--	--	--	--

"The uukwashilongo wetu otu u na megulu moka twa tegelela mo Omuwa Jesus Kristus ngoka ta ka shitulula omalutu ngaka getu omasi, ga fe olutu lwe luuletele."

## EPANDULO

Mu Juli na mu Auguste omundohotola van Nieuwenhuysen okwa kokona Aawambo oyendji komagongalo ogendji. Aantu ye thike pu 14000 oya fanekwa keshina lya Röntgen.

Ngashingeyi ondohotola van Nieuwenhuysen okwa nyola ombilive, moka a hala okupandula unene aapangi ayehe naasitagongalo ayehe naalongi ayehe mboka ye mu kwatha mokulongekidha ekonakono ndyoka. Ota ti: "They did a marvellous job." Otashi ti: Oya'longo nawalela, oshilonga sha foshikumitha.



## ELEKELO LOOPENTIKÄINEN

Ovamwatate!

Mefiku eli lokufikama kwetu eshi hatu shuna koshilongo shetu ame neumbo lange alishe hatu mu kundu, unene nye ovalongwa aveshe mwa kala mEngela.

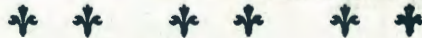
Tangi kouwa aushe twa pewa mOwambo. Unene ovalongwa mEnongelo ve tu twa omukumo mekondjo letu, moluhodi nomehafo (menyaku).

Alushe twa tambulwa nawa mo maongalo yo. Nepandulo linene hatu dimbulukwa omupashukilishitaingerki wetu.

Momutima wange hai humbata mokafimbo aka eimbilo olo la totwa kutatekulu Nakambale: "Kondja shili...! (Ehangano 465). Eimbilo eli tali kumaida omukriste a diinine fiyo opehulilo. Vahapu va hovela ngaa nawa, ndele ehovelo liwa inali wana nango. Hatu pumbwa oudiinini, unene mefimbo loudjuu yo tu twikile nawa ouwanghenda wa Kalunga twe u pewa. "Diinina osho shoye u ha kufwe efi-dano loye," Ehol. 3: 11.

Kalei po nawa, oovakwetu!

ooPentikäinen



## EINDILO KAALONGISIKOLÁ

Etonatelonongelo lya Shakati otali ku indile omulongi ngoye wa pita mOseminari u ka longe ostanda I momumvo 1965 ya kala naalongwa 37, moshikako sha hugunina shomumvo 1964.

Nyola eindilo lyouye ngeyi:

**Etonatelonongelo,  
Oshakati, Onaanda.**

## TAA INDILE OMAGALIKANENO

Okuza eti - 19. 11 - 5. 12. 1954 otwa kala mokutalelapo aamati mehalakano otse nomuhongi Matti Seppälä nomusitagongalo Malakia Alugongo. Otwa talele po Oshaanda, Okahandja, Owenduka, Otjimbingwe, Okamina ka Uis, okamina ka Brandberg, Omoonda, Ombaye nOtjiwarongo. Momahala agehe aamati ya gongala nawa.

Otwa nyanyukwa notwa tsuwa omukumo sho twa tala aamati ya tya oombimbili dhawo nomaimbilo taa pulakene oohapu dhomwenyo. Omo ye li taa longathan<sup>a</sup> omashasho noombimbelingundu nomalwiimbo. Shaa mpoka konyala opwa li ookoora tadhii imbi. Ayehe aaunguli naatuli mUushimba OTAA INDILE OMAGALIKANENO. Nayo wo ota ye mu galikanene.

Oku na yamwe yaa na ko na sha noohapu dhOMWENYO na yo otaa pumbwa omagalikaneno.

Iiyimati yeitaalo lyawo otayi holoka sho ya hala okugandja omolwoshilonga sha Kalunga. Omaha gamwe ya gandja iimaliwa yikoleke OSHIKETHA SHAAGUNDJUKA YONGERKI:

Aavenduka mokomboni ya gandja  
R 5. 86  
Okamina ka Uis " R 2. 46  
Okamina ka Brandberg " R 1. 26 1/2  
Kumwe R 9. 55 1/2

Iimaliwa ya tulwa moshiketha shaagundjuka yongerki. Oshiketha shika otashi tegelele shi kolekwe, op oshivule okulonga. Otatu pandula mboka ye tu tsile osheelo.

"Nomokulonga uuwanawa itatu vulweni, oshoka ethimbo nge lya thikana otatu ka teya wo, ngele itatu vulwa! Onke ano manga tu na ethimbo tu ningileni ayehe uuwanawa --" (Gal. 6: 9, 10).

Otaye mu kundu, OTAA INDILE OMAGALIKANENO.

K. Dumeni



# OSHIKOLOLO SHEGUMBO

## W A A K A M B A D H A L A K U S I N D I

Taa! Hoo...! Tatu lilwa mo kaanona twa kaatiligane noombaati ndhono aakwetu taa. Pulakena utale wa tya dhi li hono ando oyetu yene. Etatu thilu. Meke-meke-meke! Tatu ethele kala twa za ko ndati.

omeya moonda tse tu na omatemo. Nena otatu kala owala ngawo? Olyaano ta ningi omutungi gwoondjugo a longwa? Olyaano ta ningi omuhongi gwiipilangi ta pitile moskola yoshihongelo? Oto pula nee ngiika kutya, oyi li peni? Kushi mpo yi li? Kushi ngele oyi na oshilonga? Yaye-yaye, ukali opo u li mokutseya kwa tya ngaaka.

Ngele ino hala okukala u na egumbo lya shotoloka, iho hongoloka nando okiimaliwa yoyenyene. Olye ano Omuwambo gwotango ta ka mona onzapo yuulongi woshihongelo netungo lyoongulu? Huka ku na oskola ya kala ko nale. Ngashingeyi sho tu wete inaayi udha, otwa ti: Aantu kaye uvite ko nkene uu- "a-mbag" tau ti.

Mboka mwa kala tamu tungu oongulu dhooskola dhaanona mOwambo omwa mono nkene iilonga ya tya ngaaka iilonga ya pumbiwa shili. Otatu uhaleni owala tu li miigunda twa fa oongombe anuwa otwa tunga omagumbo? Egumbo hali lokwa mokana hamba ka li tumbitha oshinyenu siku limwe?

Kehe ngula oshiti kothingo sigo omuntu wa pushuka komapepe. Pushukila po ootu nee okuningilwa oombaskena mbala, uule woomwedhi mbali-ndatu, ou li megumbo lya tungwa noohima. Osikola oya pumbwa aantu yiilonga mbyoka yetungo noyoshihongelo. Shaa u na okanzapo, oto hupu kuume. Oshoka omo owala to li, mo omo to zala moka. Omagumbo getu oga vulitha unene. Oondhilu kehe omumvo. Sho osho tashi tu imbi okuninga noma-pya omanene sho. Oshoka ou na oshimpwiyu shokudhika noshokulonga epya.

Ninga egumbo lumwe aluke, eto longo iilya yoye. Sho tamu ti, aaye oshilongo shokakambe okambwilili oshaa na sha. Aantu ya tunga ya longwa ya pita osikola ngaashi naanaa ndjika.

Tala kOkatana kElundu ndyo tali tungwa ho. Ashike ando okwa li twa longwa okutunga nokuhongela omiyelo noosikopa niitaafula niipundi, ou shi ando ope na omutiligane ta gumu ko olunyala komatungo hono.

Ando iimaliwa mbyoka tayi kwa-

Ngu ta kambadhala a fe aatungi oto adha a tunga okambaalaka taka gu-po komvula. Oto adha a tunga eku-ma lya endama. Oshoka kapu na ngo a longwa e ta tungu mbala methimbo efupi nokuli. Otwa pumbwa aalongwa oyendjilela. Inamu hala amuhe mu ninge aazali yoofilipusa dha yela she-ke. One nee aanambelewa, one nee aalongi. Ayii..... Otamu longele pe-nyaano? Otamu kala owala tamu ni-ngilwa ne mwa hala okutoya mwati? Oku na tuu he ha ka kwatha omwa-na kegumbo lye ye a ti a toyo ota ka ninga lye? Kashi ko. Nondjala ngele ye ya kapu na mwali ta tala mu-kwawo.

Noohapu dha Kalunga otadhi ti - "Inamu hala amuhe mu ninge aalongi otamu geelwa ku Kalunga." Olye ta takamitha iimuna shili? Na olye ta kumbu ongulu? Olye te yi thikameke ekuma? Ha aantu ya lo-ngwa moskola nga ndjino yuu "aa-mbag"?

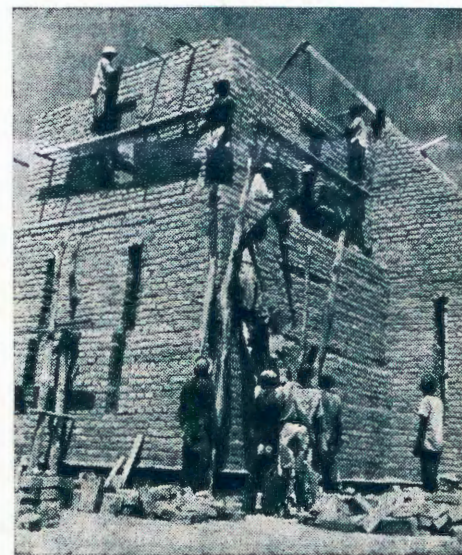
Shaa kwa zi efundja osho to mo-no tatu dhiluka. Omagumbo taga ningi gaali, aaye gatatu. 1) Oshigumbo shuudha omeya, 2) uulunda uyali u li koongudhi pokatuntu, 3) noshigunda shiikombo nuutana. Aaye.

Kaku na omuntu ta pewa eipa-ngelo ta lala moshigunda a fa okakombo.

Namba mwe ya muuyuni wongolo? Aakulu yonale kakwa li ye na omuwiliki. Itamu fuuka yakwetu nando osho nee to piti mongulu mono, wa tya oshuta nenge ompunda yoye yomambo to yi kOsoondaha? Ohaku ti owala:- Olyaano ta keelele megumbo nena? Ee! Otali gwaywa koo-mbwa shili.

Oshimbombo shuunona shi li o-wala mombiga ya siikilwa oshikangwa, yo oye edhililwa koonda ya fa oshikombo shomuzimbi.

Aaye! Tula po egumbo lyomala gaali gatatu, nomiyelo dha lyo, e to kilinga po noshipatululo nekumba. Ha ngaashi tatu shunitha aana yetu monima. Omulongi ta pula:- "Onda li nda keelela megumbo." Aaye! Tuma omuntu koskola ndji yoondunge ye a longwe e ye e tu tungile omagumbo mOwambo.



*Mokulonga kwoye pula aluhe ehalo lyOmuwa tango opo u kale u noondunge.*

Shampa a longwa, momumvo ota vulu okwiithanwa kaantu yahetatu e ya tungile omagumbo. Eta ya kala ya mwena ya fa ongolo.

Aakwetu tu ziipo ondapo mpa tu adheni aakuluntu yetu. Opuuwinyai. Oya li ya nyengwa, ando ha sho ye li.

Aagundjuka moomvula ndhika, hulitheni oofalama manga. Opo tatu mono emanguluko.

Nandi ku ulukile Omulongi omwaanawa nOmwene nkene a tame-ke iilonga yotango kombanda yevi. Ha iipilangi! Ina hala okulala megumbo hali lokwa mokana. Oye olye? OJesus!

Iho tila nomulilo oo tuu nkene hatu mono tagu fike egumbo lyOshiwambo? Uuyamba woshilongo ohau zi miilonga. Tu nelago sho hatu tholoma oombaskena dhetu yene!

Tu longweni ooskola dhiilonga, twaa gandje eliko lyetu kiilongo.

Edhina lyombwa oku mukweni ho li uvu. Tu ihumitheni tse yene.

Aamati ne, Uushimba nau hule. Tu kondjeleni evi lyetu noshigwana shetu koombinga adhihe. Itatu ka sa nenota nenge ondjala shaa tu na aalongwatungi kuume!

J. Katangolo

# OSHIKOLOLO SHAAGUNDJUKA

## PETHIMBO NDIYAKA

*Etsikilo*

Aahongi Saari na Hänninen ya yatalele po Uukwaludhi wo. Evangeli inali falwa natango huyaka. Oya yi komukwaniilwa Iita, ngoka a telelwa po kaayenda ooyakwawo naanaa, manga aahongi inaa ya. Aaputu ya yi ko olwindji kuuwa, oshoka ya pula ii-maliwa yawo; omukwaniilwa ngoka a tetekele Iita, aniwa ina futa ongunga ye manga a li ko e nomwenyo.

-Kandi nethimbo okukundathana oongunga oonkulu na ne, oshoka ngashingeyi tandi tegelele aayenda, osho Iita a lombwele Aaputu.

-Aayenda taa zi peni?

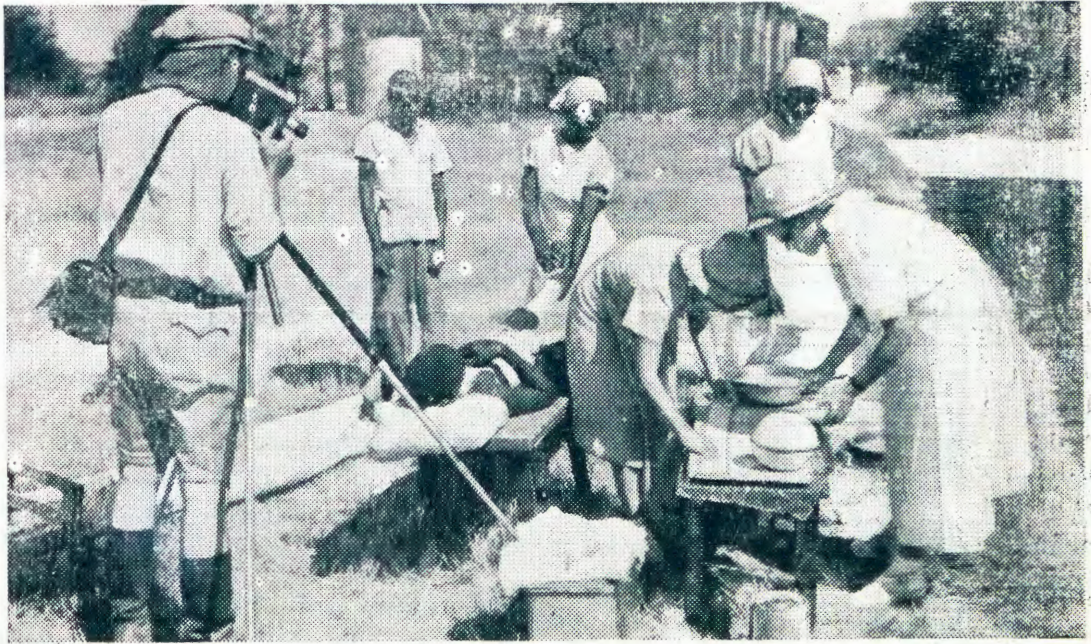
-Ee, kombinga ndjiyaka yokuumbugantu. Aaputu ya dhiladhila kutya, aayenda mboka aandowishi noye ende-lele okufadhuka po.

Iita okwa nyanyukilwa unene okuya kwaahongi. Oye okwe ya pakele po nawa nokwi ithana aakuluntu yoshilongo opo ye ya mone wo. Omukwaniilwa mwene okwi indile shili aahongi, ya tume aalongi moshilongo she. Osho aakuluntu ya ningi wo. Aahongi, ya ti kutya, taa tseyithile aakuluntu yawo mu Soomi oluhepo lwoshilonga. (Osho ya ningi wo).

Jesus a ti: "Iilya yi li po oyindji, ihe aalongi aashona, galikaneni omwene gweteyo, a tume aalongi mepya lye."

Sho ya yile ngaaka kUukwaludhi, August a li a nyola membo lye: "Otwa yi kUukwaludhi esiku eti-30 lya Desemba 1907 notwa zi ko nkoka esiku eti-2 lya Januari 1908. Olye ngo pamwe ta mono ompito okutameka iilonga huyaka? Iita ota mono tuu aalongi? Omuwa, ya tumina aalongi, oshoka tse aantu hatu suunye mbala."

Jesus sho kwa lombwele aalongwa ye, ye nokwiindila aalongi, ye mwene e shi shi, olye ngo te mu tumu kUukwaludhi. Oye tuu nguka a galikanene omukwaniilwa Iita noshilongo she. Omuwa a li a hogolola nale omuntu, ngoka a li e nokuya ko. Oye ote ke mu tuma mbala.



*Konga ekwatho lya Jesus palutu nopamwenyo.*

### OKUYA KU KUKU RAINIO

Selma Rainio, omundohotola Omusoomi gwtango mOwambo okwa thika huka popepi nOkrismesa 1908. Oye okwa langekwa tango mOniipa, moka a tameke oshilonga she. Aawambo yi igilila wo okuya kOniipa ya konge ekwatho momauvu gawo ku Hänninen. Ihe omaluhepo ga li po ogendji, oshoka inapu monika natango ondjugo moka aavu ya wapa okulala. Oyo ya li ye nokulala pondje komalupanda momvula nomombepo nomomutenya. Pomathimbo gefudho lyookola ya wapa okulala moondunda dhooskola. Ihe nando ya li po ngeyi, oya kwathwa tango ku August noko-nima ku Selma Rainio. Oye a tameke okutungitha mbala mOniipa oondunda dhaavu.

Oyo ayehe yaali ya hokololele aavu yawo Jesus Kristus, omwaaludhi gwa shili. Osho ngeyi ethimbo lyuuvu lya ningi kaavu oyendji ethimbo ndyoka una Kalunga e ya kongo nokwe ya ithana.

Omumvo tuu nguyaka 1909 Ehangenotumo lya Soomi lya gwanitha omimvo 50. Omolwa sho iituthi iwanawa ya ningwa megongalo kehe, noshwo wo kOniipa. Ongerki ya li po yo opalekwa nawa noongala niuhwa. Pekuma pwa tulwa elapi enene lya toka moka mwa li mwa shangwa: 1859-1919. 1. 1909, na EHANGENO LYA MIS- SIONI.

Nando pwa li pu noshituthi shenyanyu, enyanyu inali hala okuya moomwenyo dhaantu, oshoka ondjala ya pangele mOndonga. Oombahu dha mana po iilya momapya agehe.

### PE NDJE OMUTIMA GWOYE

"Omumwandje, pe ndje omutima gwoye, omeho goye naga hokwe oondjila dhandje" (Omayel. 23: 26.)

Osho Kalunga te ku ithana ngoye ngu wa kala wa hokwa uuyuni noondjila dhawo. Ngashingeyi nelaka tuu ndika, Ho te ku ithana note ku landula nokuhedha ku ngoye noku ku ithana ngeyi: Omumwandje, pe ndje omutima gwoye. Kalunga a hala omutima gwoye. Ngiika oho dhiladhila, ayihe oyi li nawa mu ngoye, sho wa shashwa, nowa kolekelwa megongalo noho holoka mOsondaha mongerki no miigongi yaagundjuka. Kalunga a hala omutima gwoye; ye ita indile a pewe eshasho nenge ekoleko lyoye nenge okugongala kwoye, awe. Kalunga ta pula ku ngoye omutima

gwoye, opo ye e gu pangele nokugulela melelo lya shili.

Nena ngele ino gandja omutima gwoye meke lya Kalunga, ukriste woye owo kau noshilonga. Momagongalo aantu oyendji haa dhiginine ukriste womuntu omukulu, nando kau noshilonga. Otau kakatele komikalo omikulu nokiinima yowala yaa noshilonga. Kalunga ta pula omutima gwandje no gwoye, oshoka omutima ogwo cha lyepangelo momuntu. Omutima otagu pangele omadhiladhilo noohapu dhetu niilonga yetu ayihe.

Onkee omitima dhetu tadhi pumbwa dhi kale meke lya Kalunga, opo ye e dhi pangele e dhi dhiginine noku dhi gamena. Ano tu peni Kalunga omitima dhetu. Nena tatu mono oonkondo nuupenda okukondjitha omutondi. (Kol. 2: 6-7).

L. Teopolina Amukushu

## KATU NA APA OSHILONGO TASHI KALELELE

Omuhongi Kaarlo Jalmary Petäjä a hulifa oweenda waye 5.10.1964. Ota tulumukifwa paife nokuteelela fiku aishetai kwatunuka, eulu lipe nedu lipe taa holoka, osheshi yotete otai hulu po.

Tatekulu Petäjä okwa yapulilwa moshilonga shetumo omudo 1907, wo owo e ya kOwambo. Oye okwa mona shihapu shomakondjo nomapiyano oiwana yOvawambo. Okwa mona yo nhumbi Evangelii la Jesus Kristus tali findi oukolokoshi neenghono doupaani mOwambo. Omesho aye a mona nhumbi omaongalo a Kristus Jesus a hovela mOwambo, oungudu noungudu vanini muvo Omuhupifi wetu a kala e nomwenyo noku va hanganifa va kale ongerki yOwambokavango.

**Tatekulu Niikondo** okwa lifa yo ye aeke omaongalo nokulididimika. A kala omudiinini moilonga nokuyandja efimano ku Kalunga. – “Omwene, efimano li ha ninge letu, ahowe, li ha ninge letu, ahowe, nali ninge lEdina loye, omolwefilonghenda loye nomolwoudiinini woye. Ps.115:1.

Tatekulu Petäjä polwaye mwene okwa li ha kundafana novapaani. Meenghundafana edi oye okwa holola mo **EVANGELI** la Jesus Kristus Omuvalelwa nOmumyumuwa. – “Osheshi ame inandi fya ohoni Evaengeli; osheshi olo eenghono da Kalunga okuhupifa keshe tuu ou a itavela.” Rom. 1:16. Oye okwe tu fiila oshihopaelelwa shiwa, okuya meenghundafana nomukriste ile nomupaani noku mu hololela Odjona ya Kalunga tai kufa po omatimba onyuni. Joh.1:29,36.

Evangelii olo onghundana iwa yehafo, elaka lehafo netumwalaka tali popi ehupifo oli nokutambulwa, keshe umwe oye ta pumbwa **Ehupifo**, ohatu pumbwa Jesus Kristus. Elaka lehafo oli nokuya nokulihanena onyuni aushe nashi ye okawi nokawi – osheshi ovakwetu Ova-Angola novakwanguhala inave li uda aveshe. Oshinakuwani fwa shomukriste osho okuudifa osho a ningilwa kuKalunga muJesus Kristus. Mat.28:19.

Tatekulu Niikondo okwa li ha kwafa ovanhu aveshe eehepele noipuna. A tala oluhepo lwomunhu lokolutu, ile lokomwenyo noilonga yaye oya li ya punikwa kuKalunga. Oye okwa li omulongi mofikola youfita kuElim. A talela po omaongalo pamwe novahongwa vaye nokutumbula osho sha nyolwa mOramata. Ovakwaneongalo la Elim okwe va longa okudii-

nina eilikano. “O, naau he tu longo okwiilikanana ota i?” osho umwe wo-vaElim a pula eshi omuhongi Niikondo ta shuna kedu ehohike Soomi. O-maudifo aye male e nomwenyo, onde lineekela otaa dhimbulukiwa fiyo onena.

Tatekulu ou okwa kala moilonga imwe i lili; okwa li oshilyo shEpagelongerki onyasha, okwa li mongudu yokukonakona elundululo lOmbibeli nomongudu yelaka lOshiwambo; a kala yo momatungo eengulu nomomafo-lomo eedopi. Oye alushe okwa kala e lilongekida okukwafa nokuyandja oshiholelwa mokulongela Omwene.

Tatekulu Petäjä mokukala medu looina okwa li e needjuulufi mbali:

1) Okwa li a djuulukwa okumona Owambo yefimbo eli nomalunduluko ayo. Nge te uya mongulu yetumo okwa li he uya konduda yange okumonena Owambo muame noshoto tuu momushamane Mufeti. Luhapu okwa li a tumbula: “Oukulupe ihau li endeke uhe nokambwa.” Okwa li e udite oukulupe owe mu imba okumona vali ovana Ovawambo ovahohike. Luhapu okwa pula ovakulupe vakwao. A fa a dimbulukwa nghene va li hava udifa efilonghenda nomhango ya Kalunga. “Shituaa opo tuu eli? – Iihuhua okOmbalanhu tuu....? Nailenge openi tuu? Otava umbu tuu natango eendjebo?” Okuumba eendjebo okuudifa Evaengeli nouladi. Okwa li e udite ovakulupe vakwao okwe va fiya po va kondekelwa kovanaite, onghene a li e noshisho na vo – pamwe va mwena nova tila okuumba.

Ohatu pandula Kalunga eshi a kwafa ootatekulu ovo na vakwao inandi va tumbula apa – e va pa eenghono moilonga iyapuki, ovo eefule, omapenda oita ya Kalunga – Kalunga okwa longifa etumo la Soomi novakulupe vetu ovo okweetela oshiwana shOwambokavango omapuniko manene. Tu fimanekeni ovakulunhu vetu ovo, unene tuu nokuli eshi ve li po va kulupa.

Omukriste oye omukwaita wa Kristus a longekidilwa oikuti yeendjovo da Kalunga, okukondjifa omakotokelo a satana nowii wounyuni ou noku udifa oshiholekwa shevaengeli nouladi. Ef.6:10-19. Markus ta ti: “I-ndeni nounyuni aushe mu udifile ova-shitwa aveshe evaengeli,” otashi holola Kristus Jesus omhito yokuumba okwe i pa ovaitaveli vaye. Oikuti ove i na nale eendjovo dOmbibeli....., okuumba ha momhepo ndele omova-

nhu movakriste novapaani. Omhepo iyapuki oyo tai shiiva momunhu eshi shi nokuyashwa notai upike eendjovo di kale neememo ngeongamukonda. Hebr.4:12, do itadi aluka ongaho. Tu yeluleni Ombibeli nokuumbifa eshi sha nyolwa mo.

Tatekulu Petäjä mokukala kwaye oku okwa li a humbata ongerki yetu momailikaneno nokwiilikanena oshilonga shetumo. Nande a li a kulupa ita dula okulonga nokulimonena oimaliwa, onghene tuu ina ndalapatela ovo a li ha pewa opensiuna. Osho ovakulupe oku ova humbata oshilonga shetumo. Shi itaveleni eshi – nye mu shi lipulapule momutima yeni – oshili ohamu dimbulukiwa koonakukala neenghwakutoka ve li mumemengerki. Ha molwaashi va hala sha ngenomu va ningile, ahowe, ofye tu tambuleni **Evangelii lehupifo**, Jesus Kristus a kale lela mufye. Gal.2:20-12. Shikwao ova hala okuyakula oshiwana shetu noku shi yambula shi kale ofika ngashi ve shi hovela nale. Omo ve li mokati keni moihakulilo meefikola moinyanyangido nomomatungo tave ya vo tava shuna momhepo ile kedu. Ohatu pumbwa oku va ilikanena nokuhambelela alushe Kalunga.

2) Tatekulu Niikondo ou okwa kala a djuulukwa okuya meulu. Olu-tu laye ola kala mu Soomi, omwenyo omOwambo momhepo **omeulu**. (Omutumwa wevaengeli a fa e nomadu atatu, osho hava ti.) Niikondo okwa kala alushe e lilongekida okufiya po etwali eli. A shiiva kutya, pokati kaye na Kalunga opa pwa eembedi.

Eshi twe mu talela po mokukala kwaye moshipangelo, okwa ti kufye: “Ngaye ondi na Omunankondo nOmuna-henda ondi nombili.” – Omunelao nomuyapuki oye ou e na ombili mu Jesus Kristus manga e li kedu eli.

Eshi twe mu pula okwa hala tu mu imbile eimbilo li lipi mOshiwambo okwa ti: “Imbeni” Jesus tandi mu tanga, Jesus Omuwa ngo, sho a dhimi po oondjo ndhoka dhandje wo.” Eimbilo 438. Omulumenhu wa Kalunga oku nombili shili, shaashi omatimba aye okwa dimwa po. Po opo tuu opo pe na elao lomukriste nehupifo eshi a mona emangululo mohonde ya Jesus nokwa djalekwa ouyuki ku Kalunga mu Jesus Kristus nokukala meitavelo nomeetelelo a hupifwa.

Manga twa li pokudja po, tatekulu Petäjä okwa ti: “Galikaneni.”