

# OMUKWETU

No 23

DESEMBA

1965

## LONGEKIDHILA OMUWA ONDJILA

Mat. 11: 2-10.

Ethimbo ndiyaka etegelelo lyokutegelela omumangululi olya adhika lya koka noonkondo maantu. Oshoka aantu oya adhika ya vulwa uupika. Uupika owa li po oshilongekidhitho oshiwana, sha kwatha aantu okuyuulukwa emanguluko. Olye ando a hala okukala omupika? Nopomathimbo getu kaku na ngoka a hala a kale omupika, ayehe oya hala emanguluko. Osho elago enene shili omuntu ngele te li adha.

Shaa tuu Johannes Omushashi a holokele mombuga ya Judea ta uvi-  
tha, ayehe otaa ngumukile kuye. Afalisai naasadukai osho ya ningi. Ihe etegelelo lyawo olya li lya tsuma, kaye shi wo oshike ye shi tega. Eeno, oya tegelele ehologo li noonkondo tadhi kakamitha. Na Johannes osho naanaa a dhiladhila. Oye sho a edhililwa mondolongo, okwa tegelele nomukumo omunene ondholongo ndjo-

ka otayi ka mbonyagulwa po nokuli. A kundana ilongankondo ya Jesus nota dhiladhila ando Jesus a ningile wo ilongankondo mbyoka mondolongo moka omutetekeli gwe a edhililwa. Ihe Jesus sho itaa holoka mbala moonkondo, na Johannes a limbililwa: "Pamwe ano nguka haye". "Ihwepo ndi pule": "Ongoye tuu nguka onakuya nenge tu tegelele gulwe?" - Aantu osho ngeyi haa limbililwa nuupu Omukulili gwawo, notaye mu iteka, oshoka aniwa ita kwatha mbala. Pamwe oyendji yomethimbo lyetu yi iteka nale nokuli, oshoka ya vulwa aniwa okutegelela ekwatho lya Jesus.

Emanguluko ndyoka Jesus e li eta, ite li dhimbulukwa nuupu. Opo li li, ihe olya holekwa aana yuuyuni mbuka. Jesus ote li fatulula ngeyi: "Lombweleni, --- aaposi otaa monoko, iilema otayi ende, aanashilundu otaa yele, oombolo otaa uvuko, aasi otaa yumudhwa noohepele otaa uvithilwa evangeli." Ashihe shika osho ihe emangululo. Kaku na we ngoka ta kala omuposi guulunde, oshilema, omunashilundu, ombolo, omusi nenge ohepele moshilongo sha Kalunga. Ayehe otaa kala ya mangululwa koonkondo dhevangeli lya Jesus Kristus.

Johannes okwa li ashike omulongekidhi, ta longekidha aantu okutaamba ehupitho, nokutya okutaamba Jesus Omuhupithi. Euvitho lyevangeli olyo elongekidho, tali ku longekidha okutaamba emangululo, u mangululwe muulunde nou taambe ehupitho. Omunelago oye tuu ngoka ta taamba euvitho lyevangeli momwenyo gwe. Otali hupitha meso nomoonkondo dhuulunde.

M. Ngipandulua.



*Ongame onda thikama posheelo notandi konkola. Kehe ngoka tu uvu ewi lyandje note egulula ndje, otandi yi kuye etatu li uulalelo pamwe naye!*



# OMUKUETU

Desemba 1965

## INAMU PUKA

Kor.6:9-11.

Oku na ongudu inene paife, yovakriste ovo tuu va shashwa medina la Jesus Kristus, va puka. Ove lipukifa tava ti: Oluhaelo kali fi oulunde, okuninga pa dja edimo. Ndelene keshe ou ta diladila ngaha, okwa fya nande na kale e nomwe-nyo, e wete a wapala. (1Tim.5; 2Petr. 2:14).

Otashi dulika tuu mbela ome-sho omwitaveli a kale taa vadimine oluhondelo. Shidalelwe! Kalunga oha tondo oluhondelo nomhepo yaye ohe i djuulukwa a fya oukodi. (Jak. 4:5).

Okwa nyolwa: Nge hatu nyono owina nena kape nekufilo lomatimba. Omwitaveli ita teelwa a kale ngomukehenakalunga. Nge hatu ke litwa kekiya loludi eli, inatu mwena. Tu endebele tu ye komuhempaululifitate, opo tu diminwe po omatimba etu. Josef komukainhu wa Potifar ota tumbula: Itashi dulika, opo ndiha kanife ombili na Kalunga kange. Omushamane Job.31:1 ota yandje oshipango shikukutu, opo a kale nombili na Kalunga kaye.

Ehokololo eli neendjapo di li mo, otali tu tomhele ashike oulunde woluhaelo, ha edimo. Oku na eendjila dimwe da wapala momesho ovanhu nande efikilo lado efyo. (Omaj. 14:12).

Ev. Johannes Ndimuedi.

**Olye nguka te ya nkuka? Oye Omuwa gwomuJuda! Egulukii ne iiyelo, ne iiyelo yegulu! Yuuwe weadhimo lye, ta gandj' ombili ku ayehe. Omuwa gwoshili ita fundju, tanga ngoy' omukuluntu, Nomugundjuka wo wu mu tange, Hosiana omusindan' oye!**



*Nom Okrimesa ndjika yonuumvo inamu dhimbwa aantu mboka yomomapundo, aayebele naapagani ayehe. Tu ya galikaneneni. Tu ya peni omagano. Tu ya ithaneni momagumbo getu, tu ya pe ontaku.*

## HAMUTENYA ANINGI SIMEON VILHO MU PAULINUM

Omumati nguka Hamutenya mo-wambo okwa za mo mu April 1964. okwa li a tuminwa a ka longe pofalama edhina lyayo Kunibes, yomuhona Martin Hällich ya gama kuu-ninginino wa Paulinum.

Konima yiiwike itatu omuhona Hällich oya tembuka pamwe na Hamutenya, opo ye ye ya longe mepya lyOmuwa mu Paulinum. Omusamane Hällich oye omusilishimpwiyu wegumbo lya Paulinum, egumbo alihe olya thikama komapepe ge (Huis vader). Osho wo Hamutenya kehe esiku taa longo pamwe nomuhona gwe moku-tu yakula mu Paulinum.

Mu Juni omuwo gwa zi ko, Hamutenya oya kala aluhe pamwe nomulongwasita S. Ekanjo. Okwa li a indile Ekanjo e mu pukulule moshiafrikaanisa, opo ngele taa longo nomuhona gwe, ya vule okupopya ayehe oshiafrikaanisa, osho wo mongerki opo a vule okuuva shoka tashi uvi-thwa, oshoka elongelokalunga ohali ningwa aluhe moshiafrikaanisa.

Oya ningi owala omasiku gamwe, ye Hamutenya ota pula, ngele otashi vulika a pukulwe wo moohapu dha Kalunga. Oya ziminathana, noya dhiginine aluhe okuninga otundi yawo yOmbimbeli ongulohi kehe konima yokulya.

Numvo mu Febr. osikola ya tameke ishewe, osho wo otundi ya Hamutenya pamwe nomulongi gwe oya tameke ngaashi shito. Aluhe komatango, ngele te ya koshililo oku na okampunda moka mu na omambo ge, opo ngele taa piti moshililo ya ka ninge otundi yawo. Hamutenya a hokwa shili uutoye wevangeli. "Ando na ngame wo ndi mone esilohenda lya Kalunga opo ndi yalulilwe mongundu yaaithanwa ya Kalunga", osho Hamutenya a popi.

Otwa tseyu tuu shoka sha ningwa po esiku eti 12 lya Septemba 1965? Esiku ndyoka Hamutenya okwa shashwa mongerki ya Paulinum. "Hamutenya a ningi Simeon Vilho mu Paulinum". Omusita Apollos Kaulinge oye e mu shasha. Konima yeshasho ongundu yaawambo oya imbi, "Omu-kwetu pulakena ewi ndyo lyevangeli". Osho wo omulongi meme Voipio a ningi euvitho mokulesha Mark. 12:41-44.

Komatango taa gongala ishewe pamwe na Simeon Vilho. Omusamane Petrus Diergaardt okwe mu popitha noohapu dha Kalunga kutya, "Kape na ngoka ta kwata koshipululo e ta tala konima, aawe, e na okukwata oshipululo nomaako ge agehe noku-kala a tonata opo kaa tenguke. Osho wo ondjila yuukriste itayi ku tegelele u yi landule ngoye to ti ho tala konima. Yi landula shili nokulalakanena shoka shokomeho, ayihe yokonima yi etha po.

H.N.Haufiku.

### TWIKILA! TWIKILA!

Twikila mokuyakula—twikila meitavelo—twikila moilonga yoye—twikila mokuudifa kwoye—twikila nde twikila yo natango okupopila eitavelo noshili aishe yevangeli. Timoteus ta ti: Ohandi ku kumaida, diinina oshilonga shoye. Onawa okudiinina nokutwikila

oshilonga shetu nomefimbo eli lomalanduluko.

Ope nomamakelo taa lolola. Mwa li hamu tondoka nawa, olyelye e mu imba okudulika koshili? (Gal. 5:7) Kala mu oyo we i lilonga. (2Tim 3:14) Twikila twikila, ino loloka!

## EGONGALO EPE EHEKE

Eti 11. 7. 1954 twa tembuka mOngandjera. MOndonga twa thiki 14. 7. 54, notwa tula mEheke.

Ondjila ya li odhigu, iitshana yu udha omeya gefundja. Motshana sha Lwani, oongombe dhokatamba kamwe dha yi montopo, iiskaiwa ine ya teka okatamba ka yi montopo. Otwa kutha oongombe dhokatamba okakwawo notwe dhi mangele ko adhihe.

Sho twi ihilile kiiheke ya Nakela, kwa li uusiku. Uutemba twe u kutula mondjila. Manga tatu tematema uulilo, uunona wa li wa kotha mokatamba. Okanona kamwe ka gu mo, lago enene okatamba ka a dhika ka thikama. Manga tatu tala okanona ngele okamona oshiponga, oongombe dha kana. Otwe dhi kongo konyala ootundi mbali.

Sho twa thiki ku Niimwandi, oondjuhwa ndatu dha sa. Sho twa thigi po Uukwambi, twa thiki mOndonga. Otwa tula mEheke, moka twa adha omagumbo ge li mokuti kokwene. Oluhodhi omolwuunona wetu inau mona we ompito okuya moskola. Oku na tuu oskola yaanona ku Amusa, ndele ondjenda oya tsuwa nokuutana.

Momumvo 1955, omukadhona gumwe a zi kokagumbo, otwe mu ningi omulongi, pamwe nomukadhona a kolekwa ashike. Mu Feb. 1955 kepangelo paveta sho kwa zi ezimino lyokutungwa

osinagoga, aakriste ya nyanyukwa noonkondo. Etholomo lya tameke mbala. Etungo lyongulu lya kongelwa aashimbundu yatatu. Oya tungu pau-sho omvula inayi loka nawa, oombaskena inadhi gwana. Egongalo lyu utha oombaskena dhi pungulwe. Etala lya pangelwa ngashi ongulu, olya kumbithwa iihenguti ya adhika ya gongelelwa ongerki. Oombaskena niihenguti ya hupu ya pungulwa metala moka. Omumvo 1957 kwa gwedhwa ishewe oombaskena, natango sho omumvondjala, twa nyengwa okutameka etungo. Ndele ethimbo ndyoka alihe, aakriste oyendji taa ipangitha pashipagani. Oshigongigongalo sheti 29. 5. 1960, sha tokola okutungwa oshipangelo. Sho twa adhika twa uvane-nathano nomusitamuwiliki gwokOshitayi, ngu e nokugandja ofuto yawo. Sho ya mana oya dhini ofuto ndjoka ya pewa, no ya tokola okukumuna po ongulu. Osho she etele omusita omugundjuka uudhigu. Nando okwe ya pukulula noku ya heka yaa tsakanithe etokolo lyawo. Oya tameke okukumuna. Sho ye yi ningi omunyene, omukuluntu gwawo okwe ya mweneke, no ya yi. Esiku lya nofu omukuluntu gwawo okwe ya a pewe iimaliwa yawo, opo e ke yi topolele aantu ye. Nani e nedhiladhilo oku yi kutha po nekoto yi ninge ye ashike.

Ndele komeho okwa ka gandja nga ya yakwawo.

Mokugongela iihenguti nani egongalo lya gongele iishona. Omusita pamwe nekoleko, oya landula omikunda okukonga iihenguti momagumbo.

Omitenge noombati ya kuthwa mepya lyomusita. Sho omusita ta kokola epya lye, omi omiwanawa okwe dhi dhimi manga inaadhi hula po komulilo.

Ongulu yotango sho ya holoka, egongalo lya nyanyukwa noonkondo, oshoka elongelokalunga lyetu lwotango twa ningile momwandi. Osinagoga sho ya ziminwa, twa dhike etala nomo moka twa zi tu ye mongulu.

Omumvo 1965, egongalo lya tokola okutungwa oshinyanga. Omusita ina pitika we aatungi ya ze kulwe. Oye mwene a kala omutungi omimvo 55-66.

Eti 1. 1. 1957 egongalo lyEheke lya dhikwa. Omumvo 1958 egongalo

lya tokola okutungwa ongerki ndele lya uvanelkelwa okupewa omupangi nge tu na omaha ngaka: Oshipangelo sho shene, okastora komiti, nongulu yokulala omupangi. Egongalo lya tokola okutungwa ongulu yimwe yi nomala gata-tu, nokudhikila omupangi elugo lyi ikalela. Omolwenyanyu enene egongalo lya tokola oombaskena dha adhika dha longekilwa ongerki, dhi tungithwe oshipangalo. Osho ekwatho enene lya monika, sho tu noshipangelo nomupangi.

Mu April 1961 oskola yEheke ya ziminwa kepangelo. No ya tulwa melandulathano ethimbo tuu ndyoka. Sho twa adhika nale tu nomulongi a pita semenaari no mu April tuu moka twa pewa aalongi yaali ya pita mu semenaari. Elongo lyaanona lya humu komeho noonkondo. Ngashingeyi pongulu pu na aalongi yatatu ya pita mu semenari oongundu Sub. A—St. IV.

Tu na wo oskola komikunda ya ziminwa kapangelo moka mu na aalongi yaali ya pita mu semenaari.

Omumvo 1961 aaeangeliste sho ya yapulilwa oshilonga shawo, egongalo lyetu lya pewa yaali gumwe a lankwa moshitayingerki shOndonga.

Omumvo 1962, pwa tungwa ongulu yoshigwana yomala gatano, oshongeyi omaha gomanongelo ga gwana kwa hupu nokuli.

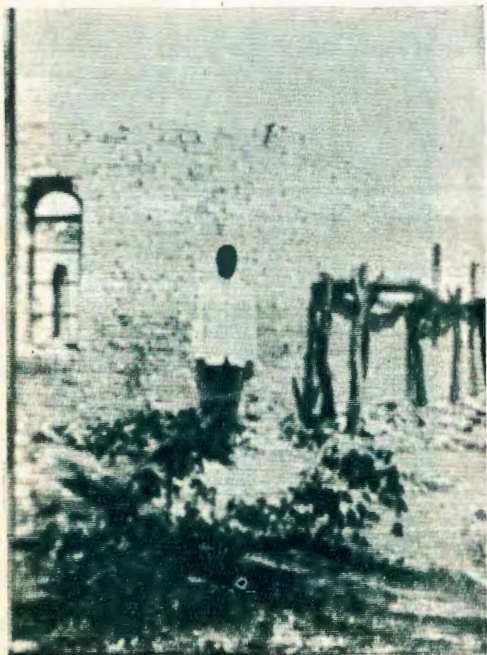
Eti 4. 7. 1964 ongerki ya fanekwa ku tatekulu H. von Schantz nomusane T. Ambambi. Omumvo ngoka ya tungwa sigo pomakende. Omumvo 1965 ya tsikilwa nena ekuma lya pwa kutungwa. Mefano ndika tatu mono ekuma lyawo.

Megongalo lyetu mu noshigongi shaagundjuka nosho iigongi iikwawo: Oombimbelingundu 12. Ooskola dhondaha dhi vule 10. Ooskola dhomiihwa mbali.

Megongalo lyetu mu na elalakanokukwathathana, okufala aapagani ku Kristus. Oyo taa sile oomwenyo dhaapagani oshimpwiyu, sho taa dhikile ooskola momikunda dhawo. Ye na oshimpwiyu noohepele yawo.

Kooitaali aaholike otandi mu indile neinekelo, okugalikanena egongalo egundjuka miimpwiyu yalyo oyindji niidhigu, yi li vule onkondo.

Peha lyegongalo Eheke,  
Johannes Ekandjo.



Omufitaongalo Johannes Ekandjo, a fanekelwa pekuma longerki yokEheke. Paife ove li moilonga yetungo, ngashi mu wete omakuma ongerki mefano.

## OSHIKOLOLO SHEGUMBO

### OKUGWANITHA E-HALO LYOYE KALUNGA OKWO ENYANYU LYANDJE

Overse ndjika oya zi mEpsalmi 40:9. Otayi monika kemanya lyokombila yomulongi omugundjuka, ngoka a adhika a zimine ehala lya Kalunga ye ongomutumwa a ka longe kOkavango. Omulongi nguka oye Paulus Mengela ya Gottlieb Hamutue, a valwa 17. 6. 1941. Okwa hulitha oondjenda dhe ombaadhilila mondjila yokushuna kOkavango, okugulu kwoshihauto sho kwa topa esiku 10. 7. 1965.

Aakuluntu ye oya kongo emanya lyokombila etokele to! Tatekulu Gottlieb Hamutue a shingitha oondumetana dhe mbali, opo a mone iimaliwa ya gwana emanya. Oondumetana dhavali tatekulu Hamutue na meme Elise Ngoloma, odha adha R82. 00. Aatumwa yokOkavango oya gwedha po R 28. 00 nemanya olya gwana ano kumwe R 110. 00 nosho lya pula ngaa-ka. Opo ihe aavali naanezimo oya yi ya ka tale omumati gwawo mpoka a langekwa. Esiku 7. 11. 1965 opwa li oshituthi oshinene momaendo gegongalo lya Mupini mOkavango. Aakriste nookuume oya gongala ko oyendji noya kumike aanezimo naakuluntu ya nakusa.

Omubisofi okwa pandula aakuluntu ya nakusa sho ya vulika ku Kalunga ya gandje omumati gwawo metumo kOkavango, hoka tatekulu Gottlieb Hamutue a longo omimvo hetatu megongalo lyokOlupala. Okwa ti wo: Omulongi nguka omugundjuka oye oshiholelwa shaagundjuka aamati naadhona mOngerki yetu, oye sho a li a vulika kehalo lyomutumi gwe Jesus Kristus. Omubisofi okwa halele aakuluntu ya nakusa oonkondo nomayambeko ga Kalunga. Aalongi pamwe naye yokuKuring-Kuru oya imbi ei-

#### ETHIMBO EFUPI

Aamwameme, ethimbo olyo efupi; onke ano na mboka ye naakiintu, naa kale omasiku ngaka ga hupu ya fa kaye ya na. Na mboka taa lili, onga mboka itaa lili, mboka ya nyanyukwa,

mbilo: "Egumbo ndi ewanawa . . . ." nomukuluntu gwaalongi omusita H. Nampala, okwa kundu aakuluntu ya nakusa nookuume ayehe noverse ndji: "Ondjila yoye yi tsika Omuwa oye note yi thikitha." Osho ngeyi ondjila ya Paulus ya thikithwa mevululuko.

Tatekulu Gottlieb Hamutue a hokolola enyanyu lye mokuthikama pombila nokutala emanya etokele nongundu yooitaali ye mu kumike. Okwa hokolola wo, nkene iilonga ya Kalunga tayi kumitha mokwiithana po omumati gwe nguka, oshoka Paulus mokuya kwe kOkavango okwa thikama neulumo enene, onga ngoka ta yi e ki itaale sho u uvite ti ithanwa. Nani eulumo ndika olya li moshikaha sha Kalunga mwene. Opo ihe tatekulu Hamutue na meme Elise nonkelo yawo oya fanekelwa pemanya lyombila yomumati gwawo. Iipala yawo oya li yu udha enyanyu nomukumo.

Omumtumwa tatekulu Benjamen Taskinen, peha lyaatumwa yokOkavango, a pandula aakuluntu ya nakusa sho ya li ya vulika ku Kalunga nokutuma omumati gwawo kOkavango, nokwa ti: Metumo otu na wo uudhigu owindji ihe enyanyu lya Jesus oli vule uudhigu mbuka.

Omupangi omusamane Markus Iihemba, a eta ekundo peha lyaamwameme aakavango. Okwa pandula Kalunga sho a li a kunu ombuto yi nomwenyo mevi lyOkavango noya mene. Okwa indile wo omagongalo getu gomOwambo, gaa dhimbwe aamwameme aakavango momagalikano.

Tatekulu Hamutue na meme Elise nonkelo yawo naanezimo otaa kundu aamwayina ayehe mboka ya li ye ya dhimbulukwa koshipala sha Kalunga methimbo lya li edhigu kuyo. Omutonatelishitayingerki shUukwanyama tatekulu I. Ninda okwa hulitha oshituthi shika negalikano.

Kalunga na hambelelwe.

Lya zi mOmbelewa yOngerki, Oniipa.

ya fa inaa nyanyukwa. Mboka taa landele sha, ya fe mboka kaa na sha. Mboka haa ende muuyuni mbuka, onga mboka itaa likola mo sha, oshoka olupe luuyuni mbuka otalu hulu po! (1Kor. 7: 29-31)



*Numvo oongendjo odhe tu ithana o-lwindjilwindji tu ye koohapu dhOmuwa. Oho yi ko tuu? Numvo nge tadhi ngelengendja otadhi tu papudhula tu ilongekidhe okutaamba Kristus mOkristimesa yonuumvo. Tu ilongekidhe ano.*

#### ETUMO



*Okaana aka oko Maano Ndatooleue. Oka dalelwa mu Nkongo. Omuhakuli Vuokko Toivola fimbo a li ku Nkongo, okwa tekula okahanona aka okayelele nde te ka kulike nawa. Natango oke li puye kEngela.*

# OSHIKOLOLO SHAAGUNDJUKA

## OSHIHAUTO SHA KULUPA

Omulumentu gumwe okwi ilandele oshihauto. Osha li tashi adhima nawa. Osha tameke tashi kulupa kashona na kashona, sigo sha kuutumba. Osha tekele pokati kondolopa nolukanda. Omulumentu mwene gwashe okwa ka konga iilonga kiilongo yi li kokule nondolopa yawo moka mwa tekela oshihauto she. Aantu oya kala ngaa haa piti po.

Esiku limwe aafuthi ye ya po noya yaka ko okugulu nokila. Osho-wala sha kala tashi ningwa ngaaka sigo sha halakanithwa po. Ou shi osha halakanithwa po ku mwene? Aawe, okaantu yowala. Ngaashingeyi ngele wa yi po ito ti we kutya osha li oshihauto.

Osho ngaaka aantu yongashingeyi otatu etha ootate noomeme. Tatu ya ekelehi ya fa omihauto dha kulupa. Kaye na omizalo, kaye na iikulya,

omakumbyatha ihaga popiwa. Ondjugo yokulala kayi po. Omuntu tuu a valele ngo. Ota vulwa wala ngaashi a halakana po, ongomuhauto kaagu na mwene. Uunima mbu a li nawo, otawu toolwa po kaantu mboka kaashi yana. Olye ta eta ohenda omolwe, manka oyana ye mu ekelahi?

Omukithi otagu mu kutha omagulu nomeho noonkondo adhihe. Olye ngo te mu kwatha? Aashiinda ya kwathele sigo ya vulwa. Aakwawo ohaa ti wala: Oyana ndi shi oye mu ekelahi.

Omumati gumwe ngoka twa putuka naye okwa ti: Ngame ngaashingeyi itandi yimo we meeWambo dheni mo. Ihe hela tuu a zile mo okuza kUushimba we wotango omimvo dhonale ndho. Ou shi ota manga shomupondo? Awe!

Oto dhilaadhila yina oku li peni? Oku li moluhepo, sigo telu thigi po. Aamwayina? Oyo ihe ye li mo taa mono iihuna tuu shili.

Ano aamwameme aaholike, natu dhimbulukweni oomeme nootate. Inatu ya ekeleheni, yo ya kuthwe ashihe, sigo taa ningi iinima yowala. Otwa pumbiwa okukwatha ootate noomeme. Unene aamati mba tu li momavi ngaka gUushimba. Tu tye: Haamuka amuke, aamati naakadhona yamwe oya ninga oothondolo dhomookamba. Ina oha tsilwa kulye? Aawe oha li onona, ye omeego ke e na. Aashiinda ya vulwa okutsa. Nenge aantu megumbo taa lokwa, ye omuntu oha landitha lyafaula. Ou shi ino ekelahi ehauto lyoye ngawo? Wa ekelehi. Oku ke li pangelitha otali ke ku nyenga thilu.

Ano natu tonateleni iihauto yetu mbyoka ye tu humbata nale, nande ngaashingeyi ya kulupa, inatu yi ekelahi. Natu yaluleni omasiku okuza kwetu kuunona, kutya otwa humbatelwe.

M. H. T. Hihanguapo.

## OMEHO TAGA ADHIMA KENYANYU

Aamati yomehalakano muWindhoek, ano Aris, Klein Windhoek, okomboni, noyo mongerki yomoshilando, oya umbu ongalo yetumo maayeleye yoku Kongo. Ya umbu oohema noombulukweya nosho nosho. Ya umbu wo iimaliwa R11.731/2 limaliwa mbika oya landwa iipundi yiyata yombiliha, opo iinima ayihe yi ninge iizalomwa.

Kalunga na hambelwe nguka te tu imbitha ekandanga mu Kristus note tu hololitha akuhe ezimba lyokutseye kwe, 2 Kor 2:14.

Imba mEhangano 250: 2-3.

Ev. L. Katoma, Windhoek.



Ovamati ovaVenduka ove hole Ongerki yavo yOwambokavango. Omukulu wonale ta ti: Oshilongo ovamati.

## ELAKA LA WANIFWA

Nale pa kala etondafano. Paife taku tiwa: Vavali e va ninga umwe. Okwa hanauna po ongubu pokati komunhu nomunhu. Otu wete, nale ovawambo ova tondafana, paife Kalunga e va ninga umwe. Ongubu e i kufa po nevangeli.

Tala u tale eshi sha kala po: Mueshipandeka ya Shaningika a kelela

evangeli liha udifwe moshilongo shaye. Ndele elaka lomuprofeti ola twa, eli la tya: Inamu linekela eehamba oshe-shi otadi hulu po. Odo oimbodi koshipala sha Kalunga. Mueshipandeka ina dula okukelela ovahongi, omufudo waye owa dja mo. Paife epangelo leyangeli ola tunga ondinga moshilongo shaye.

Opa li yo vahapu mOwambo inava hala evangeli, fiyo onena na ove

ino li hala, oto li tondo. Jesus a kufa po ongubu. Shimbungu paife a yola nombwa. Paife ovakwaLutheri ove nehangano linene mounyuni. Jesus a tya: Onda hala va kale vamwe. Kristus na kale umwe mufye. Tu longeni oshilongatumo. Inatu dina eongalo letu. Jesus te ke tu pa ondjabi yoshinauvaya nge itatu udu ondaka yaye ile nge hatu ti—foko mani keendjovo daye.

Filippus A. Nakanue.



Otatu vulu okuthaneka kutya, osho eho lya Kalunga megulu lya tala uuyuni wa pikwa komutondi. Okwa tokola ihe okutuma mo Omwana. Osho eho lye lya tala kehe ngoka polwe.

## HOSIANA! HOSIANA!

**Hosiana Jesus Kristus, na hambelelwe ngu. Omuna gwa David nguka, te ya medhina lyOmuwa!**

**Hosiana! Mokombanda, Hosiana, Hosiana! Omuna gwa David nguka, te ya medhina lyOmuwa!**

## EFUDO LIWA

Otwa mona efudo liwa meongalo eli Okalongo. Ovamwameme meongalo eli, ova li va shiiva osho twa wana okupewa mefudo letu. Otwa pewa eeshali mbali. Yotete otwa yakulwa kolutu unene. Onhivali otwa yakulwa komwenyo. Mefudo letu otwa fudifwa nawa kolutu nokomwenyo. Omwene ne mu kalele noshisho, eumbo lOmufitaongalo, fiyo eumbo la huuninwa meongalo eli.

Malakia Hauuanga, meme nounona

## OHOLE YA KALUNGA

Kalunga okwi ihogololele oshigwana sha Israel, oye e shi longithe mokutsakanitha ehalo lye lyokuhupitha uuyuni. Ehistori lyaisrael alihe tali holola, nkene ehupitho lya longekidhi-lwa iigwana ayihe.

Pokwithana Abraham nokuli Kalunga okwa ti, muye omazimo agehe gaantu yokombanda yevi taga yambekwa.

Oluvalo lwa Abraham sho lwa tana, lwa ningi oshigwana, Kalunga a hangana na sho ku Sinai, oshoka evi alihe olye.

Omaiita gaakwaniilwa yomuIsrael ogo omaiita gOmuwa, 1Sam.18:17;25:28; 20 Ondj.20:15. Aatondi ya Israel oyo aatondi ya Kalunga, Eps.74:4.

Omuwa ta yolo megulu lye, aawa sho taye mu hangene, Eps.2:4, oshoka oye a lenge Omugwayekwa gwe kolulyo lwe sigo a sindi aatondi ye ayehe, Eps.110; sigo iigwana ayihe pamwe naa Israel tayi tameke oku mu pa esimano, Eps.148.

Mokati kaaIsrael mwa valelwa Omukulili guuyuni auhe. Jesus oye Omuna gwa David, ihe oye wo gwomezimo lya Adam nosho ngaaka a ningi omukwawo kaantu ayehe, Luk.3:23-38.

Mooyinakulu ya Jesus mwa tumbulwa Tamar omukanan, Rahab gwo-muJeriko na Rut omumoab, Mat.1:3,5. Omuna gwa Maria omwIsrael oye omutekulu gwaakulukadhi yomaapagani wo.

Osho ngaaka naapagani ya ziminwa okulongekidha okuvalwa kwa Jesus, oshoka oye ngoka ta ka pangela koshipundi sha David, oye a tulwa wo a kale uyelelele waapagani.

Ongulu ya Kalunga ya kala mokati kaaIsrael, ihe Kalunga ka Israel a

aludha Naeman omusiria muulepera we.

Bileam ngoka e nomutumba ku Eufkrat, Kalunga te mu longitha a yambeke aaisrael. Omukwaniilwa omupangi Kores gwomu Persia Kalunga e mu ningi oshiholelwa sha Mesias ngoka ta mangulula oshigwana she muulunde.

Omuprofeti Jesaja kwa tiwa, oye omukwaniilwa mokati kaaprofeti, nelaka lyetumo tali ende mokati koo-hapu dhe adhihe naa naa ngashika etseyitho lyomukwaniilwa.

Egulu pulakena, nevi ngoye, taganeka omakutsi goye, oshoka Omuwa ta popi. Osho Jesaja ta tameke epopitho lye lyokupopitha uuyuni auhe, Jes. 1: 2.

Kondundu yongulu yOmuwa oko taku matukile iigwana ayihe, opo yi ilonge oohapu dhe, ya wape okwenda noondjila dhe, Jes. 2: 2-3. Pamwe nayo ezimo lya Israel tali ithanwa wo li kale muuye'ele wOmuwa, Jes. 2: 5.

Twa pewa omumati e nelelo komapepe ge, nedhina lye olyo: Omukumithi-Mupukululi, Kalunga-Ofule, Hegwaluhe, Omuwa-Omunambili, 9: 5. Ombepo yOmuwa tayi lambele, naathigona te ya uthile eutho lyuuyuuki. Iilikama nokuli te yi etele ombili mokati kayo nopamwe naantu, Jes. 11.

Uuyuni auhe u nokumona epangulo molwuulunde wawo sigo uuyuni auhe wi ilongo okuhambelela Omuwa, Jes. 24.

Kondundu ya Sioni oye ta tuula po oshisiikilo sha siikile uuyuni auhe naakuuyuni ayehe, 25: 7. Oko Omuwa ta dhikile ko emanya lyokolonela lya yelekwa, olyuuyamba, lya dhikwa lya kola, 28: 16.

Kaku na Kalunga kalwe. Kaku nemanya lyehupitho lilwe, omukwaniilwa gwaayIsrael oye tuu awike, 44: 6, 8. Oye ta gwayeke Kores omukwaniilwa omupagani, a kale ta gwaniitha ehalo lye, 49: 1-5. Onke ano oye tu uvithile ooha adhihe dhevi ehupitho nokwa gana, kehe tuu ongolo yi nokwigonyena ndje, 45: 22-23.

Inashi mu gwanena okugalula ashike ezimo lya Israel, ihe ehupitho lye li nokwadha sigo kooaha dhuuyuni, 49: 6. Ongulu ye yi nokwithanwa ongulu yegalikano yiigwana ayihe, 56: 7. Esimano lyOmuwa tali holo-kele ku Sion, niigwana ayihe tayi ya kuuyelele wayo, 60: 1-3.

Omuwa mwene te ke shi ninga, ethimbo lye nge lya thikana, ihe mokutsakanitha ehalo lye oye ta longitha wo aantu. Oye a gandja oshipango sha kola: Paleleni aantu ondjila, kokoleni ondjila, umbii mo omamanya mondjila, dhikilileni iigwana ombaneri! 62: 1-3, oshoka Omuwa okwi imonithile kiigwana yaapagani mboka kanya li ye noondunge oku pula, 65: 1.

Egulu olyo oshipundi she nevi oshipundi shokoompadhi dhe, 66: 1. Taku ya ethimbo, ondjila ya adhika ya palelwa iigwana ayihe nomalaka agehe taga ka mona esimano lyOmuwa. Oyo taa ka gongala oku mu galikana, 66: 18, 23.

Ano uule mbuka wuuyamba, no-woondunge nowuunongo wa Kalunga u thike peni! Rom, 11: 33.

Omuntu omushike, Kalunga sho e mu hogolola a kale ta hokolola iilongankondo ya Kalunga, no a kale ta longo oshilongitho meke lya Kalunga oye sho ta longo iilongankondo ye!

# OUNYUNI OTAU TONGO SHIKE

## EHANGANO LOKUTUNGA (BOU- VERENIGING) LEEMBASTELA LA TOTWA

Paife mOvenduka omwa totwa ehanganano, olo tali pashukile eembastela moilonga yomatungo. Ehangano eli (oshikefa) otali pashukile eendjabi davo, omakwafo ovakulupe, ouhaku nomakwatafano pokati ka nakukutwa na nakukuta omulongi.

## OVANHU VOMU SUIDWES OTA- VA KA VENDWA

Momudo tau uya 1966, ovanhu vomu Suidwes otava ka vendwa molwoudu wa TB. Otava vendwa oshali. Ovenda ei otai ende pailongo yovadalelwamo nde otai ka hovela mu Malitsa, nge omutwe u li kumwe nofingo

## ONDJILA YOKUDJA KOSHI- VANDA NOKUYA KORUNTU OYA NINGA PAIFE IHUPI

Nale ondjila yokudja mOshivanda nokuya koRuntu oya li emaila 235. Paife eshi pa longwa oshitauwa shipe, oshi na ashike emaila 147. Ondjila yonale oya li nefululu. Paife oihauto ohai kufa ofulaha kOshivanda luvali mefiku tai twala koRuntu

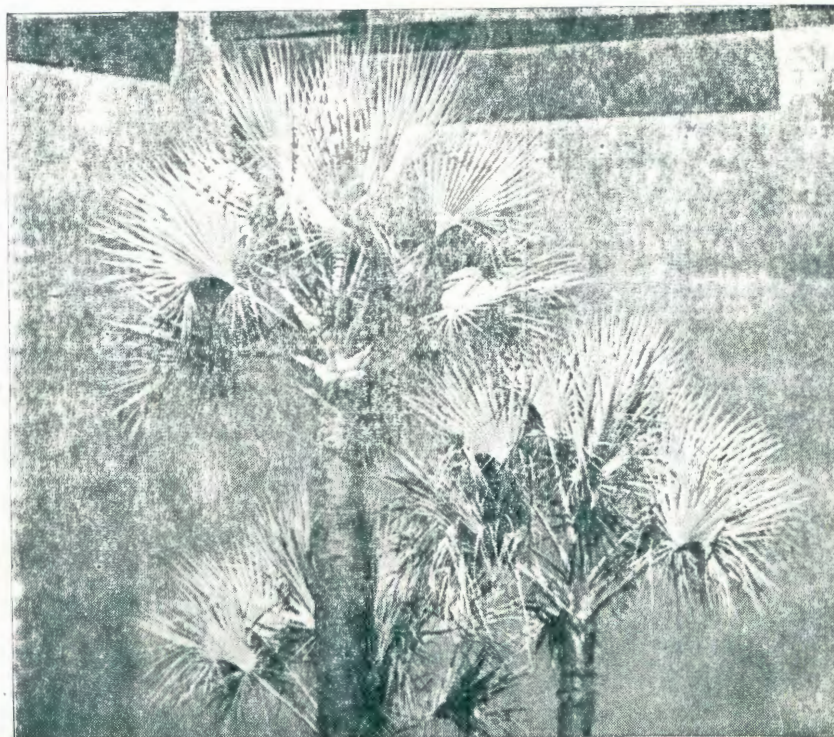
## OONDJIMA OVA SHINDA OPOOSA

Ngaashi omaulvi ovanandunge paife itaa kofa va hala okukonakona mombadawu ngashi kohani osho nosho, osho yo mboli oondjima navo otava konakona oinima, va hala yo va ehene komesho.

Pofalama Huns yomuhona W. J. Burger mopeleka ya Kaiti, oondjima ova konakona otelefona yapo. Ova kala have livakele pokakefa kongodi tave i patulula vo tave i tetaula. Eshi ove shi ninga luhapu. Ova kala hava nangala moshiwalanda shongulu imwe yopofalama ihamu endwa unene. Makeninga weetelefono, ou a dja koposa yakula oule weemaila 200, osho mu pula oule womafiku atatu mokupangela otelefona oyo.

## EDU LA KAKAMA

Pu Welwitschia edu ola kakama. Ponhano youfiku ovanhu ova pendulwa meemhofi kekakamo eli nosho yo ongula pomulongo wongula. Omakuma omaumbo noomatale okwa tenda omifya kekakamo eli.



*MOwambo sho inaamu kala oofabulika dhokukwatha aantu, aawambo oya kambadhalla okwikwatha noombale, taa tungu uutungwa e tau landithwa po. Sigo nene oluhepo otalu fike. Tungeni nga inamu sa uunye.*

## OVAKRISTE MOUNYUNI OTAVA HANGANA MEINDILO OSHI- VIKE SHIMWE, OKWIINDILILA OUKUMWE

Eenghundana da dja mu Geneva otadi ti: Molwashi oukumwe wovakriste owa pumbiwa mongongadu aisho, onghe eengerki da lukwa Protestant nosho yo Anglican, Orthodox novakriste va Roman Catholic mounyuni aushe, otava hangana meilikano oule woshivike, okudja 18 - 25 1966, tava indilile oukumwe wovakriste (Christian Unity), kakele kovakriste te vomu West Germany na Southern Hemisphere, ovo moshivike' tuu osho tava dana oshivilo shEtililo (Pentecoste).

Eindilo eli loukumwe ola tungilwa kenenediladilo:

"Ame ohandi ningi Kalunga kavu, ndele vo otava kala ovanhu vange" (Hesekiel 37:27).

Eindilo loukumwe ola fanekwa ngaha kepangelo leengerki adisho mounyuni, nosho Ehangano lovakriste loukumwe lovakatoli (World Council of Commission on Faith and Order and Roman Catholic Association for Christian Unity).

## ODULA OTAI LOKO

Ombelewa yokukoneka odula mOvenduka, oya popya kutya, neudo odula otai ka loka nawa. Nokuli vati mOkavango omwa dengwa oshihomo shinene, sha yelekwa eemilimeta

44. Paife ovakavango ova ningilwa nee nawa, va longe. Odula vati oya loka yo Oshomeva fiyo Oshivanda nosho mEtofa. Mu Gobabis omo mwa kala oukukutu munene, odula oya mbwangu la mo nomeva.

## OMULELI OMUNENE

Oshoka uuyuni okuunongo wauo inau tseyo Kalunga omuunongo we, onke ano shoopalele Kalunga okuhupitha okuugoya weuvitho omboka yi itaala.

Oshoka osho Kalunga kwa li e hole uuyuni eta gandja Epona lye, opo shaa ngoka e mu itaale kaa kane, ihe a mone omwenyo gwaaluhe.

Jesus Kristus oye tuu nguka ohelela nonena no sigo aluhe.

Ohapu ndjika oya kola no yo oopala okutaambwa: Kristus Jesus

shoka e ya muuyuni, a hupithe aandjo.

Oye nokwa pewa oonkondo, esimano noshilongo, niigwana ayihe, omazimo nomalaka oge mu yakula.

Ihe ongoye Betlehem Efrata, ongoye oshishonashona mokati komazimo ga Juda, ihe omu ngoye tamu zilile ndje ngoka, ta lele Israel.

Nomahalelo omawanawa ga Kris-mesa, nomumvo omupe, kaaleshi amuhe yomukwetu. Kor. 1: 21; Joh. 3:16; Heb.13:8; 1Tim. 1:15; Daniel 7: 14; Mika 5: 1.

Witbooi B. Ugwanga.

## KOVALESHI

Tomas Malima, Ongandjera, ota ti ngaaka: Kape na shilwe tashi pumbiwa, ohapu ya Kalunga oyo ayike tayi gandja uuyamba. Oyo tayi vulu okushita sha shipe. Ngoka i itaala oonkondo dha Kalunga, okwi itaala eyumuko.

Jesus ota popi uukeenonkondo womuntu meso. Omuntu ita vulu okugandja sha opo a manguluke andola meso. Omuna gwa Kalunga e nokwitaalwa shili. Oye ta vulu okupangula peso, Joh. 5: 27. Oye ta vulu okusila omunandjo ohenda, ha gulwe we.



*Landela aamwoye omambo, inaa kala owala.*

## NGOYE OMWINAYI, NA NGOYE WO

Etumbulo ndika olya tseyika nawa kwayehe. Nohali longithwa kaantu ayehe. Ohatu ti i, "ngoye omwinayi". Olwindji uuwinayi mbuka owo mboka wokomwenyo. Uuwinayi mboka uulunde. Sho tatu tala omukwetu to mu tala oye omulunde gwa hungunina. Nohatu mu ulike nomunwe gwetu gwomuuliko, ihe ominwe adhihe ndhi dha hupu ko odha taalela mutse yene. Otashi ti, tse aauliki otse aawinayi unene. Oshoka ominwe dhetu otadhi shi holola naana. Adhihe odha taalela mutse.

Ishewe aantu yamwe ohaa ulike aantu nomilungu, ihe omilungu dha wo dhopombanda odhu uka wala muyo. Tadhi ulike naana kutya, ongo ye mwene omwinayi. Omuntu ngu tu ulike oku li ihwe, ngoye omuuliki iihuna.

Oshinima shika osha gwana oku tu tilitha kutya, tse yene aawinayi. Aakwetu mboka tatu ulike oye li ihwepo. Omuwa Jesus ota ti: "Kutha mo tango omuti meho lyoye, nokonima to kutha mo okayagaya meho lyomukweni".

M. H. T. Hihanguapo.

## GANDJA OMAGANO GA KRISMESA

Okrismesa sho ya hedha popepi, aantu haa paathana omagano. Ngoye ino gandja gomupya, gandja omagano gomambo. Landa omambo u pe mukweni omagano. Omambo omawanawa ogo ngaka taga landula mpaka: Ondando

Ombimbeli mOshindonga	65c
Ehangano	60c
Omapenda a Kristus	35c
Nuuyuni auhe	25c
Omahodhi gaavali	30c
Uuyuni uukwanampinyuka	40c
Ondjalulamasiku	7c
Oongalo dhongerki	17c
Vululukweni manga	25c
Sha Kalunga shi peni Kalunga	5c
Eta lyomagadhi goonyushi	7c
Efatululo lyiilonga yaayapostoli	25c
Ombimbeli yandje otandi yi lesa ngiini?	7c
Mwa pewa omagano	10c
Eliki lya aluhe	6c
Elongo lyuukriste	20c
Ondjila oondji	5c
Oshilalakanenwa sheputudho	10c
Omahempululo gongerki	85c
Ongundumbimbeli	7c
Okambo kopeke	10c

Ope na ishewe omambo ogendji inaga tumbulwa mpaka.

Omambo ngaka oto vulu oku ga landa nenge oku ga mbestela mostora yomambo kOniipa, nenge u ga lande miinyanga yomagongalo ngele inaga pwa mo.

A. L. Shikufa, Boksburg, ota yandje ekundo eli: "Ouyuki oo eliki linene nenge kape nolwiso. Inatu eta sha mounyuni, osho itatu pitifa mo sha," 1 Tim. 6:6-7.

FINSE SENDINGDRUKKERY  
OVAMBOLAND  
ONIIPA