

OMUKWETU



No 22

NOVEMBA

1965

OUHAMBWA WEULU WA FA OSHIYULIFO

Mateus 13:47-50.

Oshiyulifo hatu shi lesa meendjovo edi, vahapu ava inava enda komafuta nokomilonga edi dinene, inave shi shiiva. Oshiyulifo sha tya ngaha otu shii oku shi yeleka nomudiva wetu woshiwambo. Omuluwi oha tele omidiva yaye a hala eeshi neenhangu, ndele ngeenge te uya okuundja, hado adike ta hange mo. Omudiva nande u kale wa yada ee-

shi ndo, omu na ngaa oikolomoto imwe i lili natango. Okwa tya ngo oikolokofya omo i li, omona wa namundudulu ito pula, omhelekeshe opapa, noupuka vahapu vomomeva omo to va hange omo.

Ouhamba weulu ota uyelekwa wa fa oshiyulifo sha tya ngaho. Eongalo la Kristus kombada yedu olo ouhamba wa Kalunga wokombada ye-

du. Meongalo omu na ovanhu vomaludi e lili noku lili. Ongaashi nana eeshi di li momudiva, heeno otu shii shili okuyelekwa neeshi di li momudiva da teelela omuluwi e uye okuundja omidiva yaye. Ashike epulo tali fikamene nge apa oleli: Aame tuu ne mbela oshi yombwishi ei ya hokuwa unene ku nakuluwa ile ehapala yotu? Ile pamwe aame namundudulu? Mbela mwene wouluwa nge ta kufa nge mo momudiva omu ota yukifa nge peni? Opokapale tuu kaye ndi kashe a twale keumbo, ile pamwe ota ekeleshi ashike, ame momudiva nda ile ne nawa? Oi, ope na oupyakadi shili omukwetu omuholike. Ndele liyeleka yo ngo nepulo eli: Oove shike momudiva wa Kalunga?

Efiku eli lepangulo otali ehenifa eemwenyo detu mefiku linene la Kalunga, efiku letokolo. Efiku olo mulo pehe na vali omwali a tala mukwao. Efiku olo kuhe na vali oohashikeshalye mokati kovana vovanhu. Mefiku olo eehamba adishe dokedu novanenenhu vounyuni tava dedema ashike koshipala shomutokoli munene nomunefimano, Kalunga kashili Shime shomoukwaalushe.

Epulo olo natango: Oove lye momudiva wa Tate Kalunga? Oikolokofya omo i nokukala, eemhelekeshe omo di nokukala, noonamundudulu ove li mo va fa ve udite elao, ndele tuu wani, kombwana ha koluvanda ngo nai. Mwene wouluwa ote uya. Mwene weongalo omo u li mo ote uya. Pamwe ota hange u li manga moulunde wonhumba, waya mo opo u dje mo nawa nge pa piti omafiku amwe po? Mukwaita wa Namhongo, da londoka ihadi i oita. **OMWENE OTE UYA SHILI, Amen.**

Adolf Hangula.



Omumati nguka oku na meke embo lyoohapu dhOmuwa. Ota papalutha ondjala yoonduge dhe. Omambo niifo niinyolwa yuukriste oyo iipalutha yoonduge noyombepo. Tu kaleni tatu leshe, twaaninge iikolokosa.



OMUKUETU

Novemba 1965

OSHIPONGA SHIKU- NWA

Meti 6 Iya Kotoba 1965, omumati Epafra Simon omumbalantu, okwa hulithithwa ondjenda ye muunyuni mbuka, ihe okiikunwa.

Maandjawa a za mo e li nawa e ta ka konga okunwa kokamba. Ta landa ekende lyolambika eta nu ta nu awike sigo mwa pu. Ta landa ekwawo ishewe eta nu ta nu. Uuzigo wiikunwa mbyoka we mu kwata. Okwa kambadhala okuthikama, ihe okwi ihata po ongali nokwa si mpoka.

Otse otwa kumwa notwa sohoni. Otashi gandja oondunge kutseni, tu kotokeni. Ngele owa kuta, ino ithindila we. Ngoka ita nu nando kashona, oye omunelago. Otatu ti mbela ngiini ku Epafra nguka? Okwa yi mbela moshilongo sha Kalunga? Ipula!

Taleni aakwetu ne anakamba, kotokeleni oshigwana sheni. Inamu pitika iiponga nohoni yi ningwe pune. Omuntu ota landa iikunwa yi vule oonkondo dhe eta nu nowe mu tala ashike. Ope na aantu yamwe omagoya shili. Ino tya ashike, ondi hole nima ngu ha dhenge omeya. Omundohotola okwa li a geya poshiponga shika. Okwa lombwele aantu: Aaholike, inamu nwa we sha pitilila oonkondo dhomutima. Miikunwa otamu zi: omalugodhi, oontamanana omadhigapathano niwinayi oyindji. Tu kotokeni shili.

Tangi.

Omupolisi omuluudhe 148589,
A. D. Erkki.

OMAKUNDO KEENGERKI EENGHWALUTHERI MUAFRICA

Oshongalele shovakwaLutheri (Lutheran World Federation Executive Committee), sha ongalele neudo moshilando Arusha shomu Tanzania, fimbo sha li pehulilo lasho, osha tokola shi tumine eengerki odo oilyo yOngongahangano omakundilo aa taa shikula apa:

“Oshigongi sha ongala okukundafana oinima yovadalelwamo va Africa, otashi tumu omakundilo ashomawa koilyongerki muAfrica. Fye, ngashi ovapiya vOmwene Jesus Kristus, ohatu mu kundu nye ovo mu li medu eli Africa lomalanduluko mahapu. Fye otwe liyandja yo pamwe nanye pamhepo, eshi ta mu kondjo mu konge omukalo wokukandula po omaudjuu omedu leni ehohike. Fyeni atusheni keembinga otu li momalanduluko taa endebele mokukalamwenyo. Otashi pumbiwa tu dimbuluke kutya, otwa tumweni kuYe, ou e na eengho-

no adishe meulu noko mbada yedu, ou e liyandja mwene molwetu nomolwaaveshe, e li ngashi omupiya no-muhupifi, Omwene Jesus Kristus.

“Oiningwanima younyuni ou, oyo imwe tai nyemateke ndelene imwe vali tai tu omukumo, oyo ya tula pai-fe edu (continent) eli Africa peendjijaane momesho oonyuni, oye li twala pehovelo lefiku lipe lewanifo nefindano. Ngashi tamu shi koneke kutya, eli li nokukala enenefimbo longerki yOmwene muAfrica alishe, oilonga youyevangeliste i hwame shili noku-halela ovamwameme okukalamwenyo kuwa mu Ye (Jesus), onghe ohatu mu dimbulukifa eendjovo dOmwene tadi ti: Ngashi Tate a tuma nge nounyuni, osho yo ame ohandi mu tumu yo.

“Ohatu mu pe omukumo kutya, Ongongahangano otai twikile alushe oku mu kwafa moimima oyo ye mu shivifila. Kaleni mu shi shii kutya, ohatu mu indilile nde ohatu indile yo omailikano eni mokwiindilila ovakriste ovamwameme mounyuni.”

ETUMO MUUZILO WONDONGA

Maria Jeremia yo na Hileni lingula megongalo lyOnyaanya, otaa hokolola oshilongatumo maayeleele yomuuzilo wOndonga, nkene Omuwa Kalunga te shi yambeke e te shi humitha komitse.

“Aamwameme mbaka oye na ehalo nuupenda, okupulakena oohapudhOmuwa. Aanona yawo otaa pula uumbo wokulesha. Ondi inekela otaa tseyo okulesha,” osho Maria Jeremia a hokolola.

“Moshilonga shika shetumo muuzilo wOndonga maayeleele mOnankali, onda tameke mo 26. 4. 65. Onda li nda tila nda ti: Oi, otatu vulathana tuu mbela? Nena aayeleele ayehe ye ya. Oya popi: Otwa hala okulongwa, na tu shangwe nookuli. Inatu kala nale mooskola, ihe otwa hala mo, tu longa owala”.

Aakwetu mbaka taa longo maayeleele, oye tu indile, tu ya galikanene, opo oyo noshilonga shawo ya humbatelwe kOmuwa.

Hileni lingula na Maria Jeremia.



Maria Jeremia naayeleele muuzilo wOndonga

OU NA TUU UKOLELE KOMWENYO?

Naanaa ngashi wa pumbwa oovitameni dhi koleke olutu lwoye, osho wo owa pumbwa oovitameni dhopambepo dhi koleke omuntu gwoye gwopambepo sigo momwenyo gwaaluhe. Ombimbeli otayi tu lombwele oovitameni ndhika:

Ovitameni A- “Ayehe oya yona koye, Omuwa Jesus, na itaala monokaye na eadhimo lya Kalunga”, Rom.3:23. Owi igandja tuu ku Kalunga ngashi omulunde?

Ovitameni B- “Itaala Omuwa Jesus Kristus, ongoye noto hupithwa,” Il. 16:31. Owa ithana tuu Jesus a ninge omuhupithi gwoye?

Ovitameni C- “Hempulula nokana

koye, Omuwa Jesus, na itaala monwenyo gwoye kutya, Kalunga okwe mu yumudha kuusi eto hupithwa”, Rom.10:9. Ngele osho wi itaale, nena Kalunga te ku uvanekele ngeyi:

“Ayehe mboka ye mu taamba, okwe ya pa oonkondo, ya ninge aana ya Kalunga omboka yi itaala edhina lye”, Joh.1:12. L. M. Sh.

OKWA KUFA OMUNGOME NDE TE U PAMBULA

"Ndele fimbo va li koshililo, Jesus okwa kufa omungome, e u punika, e u pambula nde te u vape. Opo omesho avo okwa pashuka nde tave mu dimbuluka." Lesha muLukas 24.

Okwe u pambula. Emboloto line kape na ou ta dulu okuli pona polumwe, fimbo ine li pambula. Emboloto dimwe odikukutu, dimwe odipyu. Ovakulunhu nounona ve nokupambulilwa, opo va mone oipambu tai wana momakanya avo, osheshi oya diladililwa okupalula omunhu.

Omungome ile omboloto yodulumutu oyo eendjovo da Kalunga. O-



Jesus a kutha oshikwiila, e shi yambeke nokwe shi ya topolele.

muudifi e noku di pambulila ovanhu. Ope na ovaudifi hava pe ovaudifilwa eemboloto inadi pambulwa. Epambulo lomboloto olo yo edidiliko lefyo laJesus, a fya opo tu kale nomwenyo. Omwenyo womunhu u nokupalulwa nawa ngokahanana. Okanona nge itaka palulikika, ohaka ningi moshiwambo hatu ti "endjandja."

Oifo, omambo, oinyolwa yomaludi youkriste, ya nyolwa nelalakano lokuhupififa omunhu, oyo oipambu yeendjovo. Ou iha udu ko nomatwi, ye te lilesehe nomesho. Oyo oilonga youmakeninga okupambula eendjovo devangeli moifo. Oi na okuyoololwa koinyolwa yomalalakano amwe. Ou ta udifile omunhu ohepele nde ita kumu kevanda (ekaka) nokoikutu yoinyanyu, oyo nakuhepa a djala, ote mu pambulile nai. Oinyolwa youkriste ya hala omuyamba nomulinawa a fatukilwe, nghe e nokutameka, muoyo nakuhepa a dingila omwenyo, elinekelo nokukalamwenyo kwaye. Eshingenge inashi fatuka, nena ongongedjo tai kwelengedja.

Nde te i pambula. Jesus te liholola ye mwene, osheshi a tala ovalongwa ove li kokule neudeko. Ote va shiivifa molupe lokupambula omungome kutya, ngashi omuma inini ya fila medu nde konima tai dala efele, osho olutu lwaye lwe va yandjelwa. Te va pe omukumo, te va kwatakanifa, ke na omalutandu, a shiiva nawa kutya, omunhu okuhole edimo nde te va di kedimo. Oinyolwa youkriste ya hala yo okuninga ngaha.

ONDHINO OTAYI VULU OKUDHIPAGA

Konyala etata lyoomiliyoni dhaantu mboka ye li muuyuni nena, ihaali iikulya pamukalo. Ompumbwe yii-kulya iiwanawa nokulya okwiinayi, konyala ohayi dhipaga aantu oomiliyona 25 omumvo kehe.

Kalunga okwa pe aantu iikulya kombanda yevi, ihe oyendji kaa shiwo eyooloko pokati kiikulya iiwinayi niwanawa. Kaa shi wo kutya, omalutu gawo otaga pumbwa iikulya yontumba nonkene taga paluthwa, ya kole nawa. Ela lyalatha ko itali ti olutu olwa paluthwa nawa, ihe iikulya iishona ya longekidhwa otayi ondola. Iikulya oyindji ya hepa iitungilutu, otashi vulika yi ete oshiponga. Ondhino okudhina iikulya noshilonga shayo, otashi vulika yi fale omuntu momukithi.

Ondhino yokudhina ondunge ya Kalunga yokuhupitha omuntu mu Jesus Kristus, otayi vulu okuninga ekano lyomwenyo gwoye. Jesus ta ti: "Ongame oshikwiila shomwenyo, ngoka te ya kungame ita si ondjala sigo aluhe"; "Ongame oshikwiila shomwenyo. ... ngele gumwe ta li oshikwiila shika, ota kala nomwenyo aluhe..." Joh.6:35; Joh.6:51.

Oshikwiila osho iikulya yomalutu getu gopambepo. Jesus oye omwenyo gwaaluhe gwoomwenyo dhetu. Oye awike ta vulu okukutitha ondjala yoomwenyo dhetu. "Aanelago oomboka ya sondjala nenota lyuuyuki, oshoka otaa ka kutithwa", Mat.5:6.

OMUKRISTE

Omunhu keshe oye omunelao mokudalwa kwaye. Oye a dalwa tete omulunde, omulunde a laula foko, e dule ombiya youvalelo.

Omukriste wa filwa onghenda eshi oivike ivali ya pita po. Wa twalwa kongerki ku Kristus u mone edimo lomatimba mohonde yaye. Wa koshwa nowa yela, wa pewa yo edidiliko olo tali ku holola, omukriste ove.

Elao ou li na, wa kufilwa, wa kolekwa, nowa lombwelwa: "Paife owa kula nowa wana okulyeendela".

Elao we li kanifa eshi wa kala mounyuni to kofa, wa tyololoka noto kondjo fiyo onena nounye.

Mounyuni omu tu li mo, omu na

omamakelo, oiliva neemwiyo da telwa. Ino enda to kofa. Kondja nanetango osheshi pa Hebr 12:4, fiyo onena ino kondja fiyo ohonde.

Nda ti, wa ya mekelo limwe, ove to anyene mo. Dimbulukwa, Kristus eshi a longifa eongalo novamati valo ve ku ifane nohave ku ifana u yelule okwooko ve ku koke mo, ndele ino hala. Ela to li kanifa!

Umwe we uya, wa filwa vali onghenda nowa kufilwa po. Mekelo wa dja mo.

Ongoshingulu sha koshwa tashi shuna vali monhata, oto shuna natango moihuna yoye. Ongombwa tai alukile konghungo osho to ningi natango.

Oshoondaha keshe ohatu udu: "Omwene na kale na nye". Ela to tali pewa omukriste keshe.

Diinina elao eli opo uha ka tye; "Woo! ame omukani handi kana!" pefiku lefyo loye. Vahapu ohatu tumbula nokuhe na ouhwenge hatu ti: "Davendji kadi ehama kulila". Ehee! ndele fiku tali uya oloye auke tiinini pe.

Tu tileni vakwetu, tu tileni, osheshi katu shii onaini Omwene wetu te uya. Tu kondjeni nelinekelo osheshi, ava ve lineekela Omwene ote va pe eenghono.

Vandamena mouta wOmukriste, Jes. 40:30-31.

Jona T.E. Hitula,
Engela.

OSHIKOLOLO SHEGUMBO

OMHUMBWE YOIKU- LYA OYE UYA MOU- NYUNI NGAHA:

Eshi oomeekulu Adam na Eva va dina oshipango sha Kalunga, ova tewa mo medilopya Eden. Adam okwa pewa e lilongele oshifima shaye keshe efiku. Kalunga e mu lombwela: Edu otali fingwa molwoye; nokuluma u nokukonga oikulya yoye alushe oimeno yedu oyo tai ningi oikulya yoye; nokulonga noudjuu nomake oye u nokumona oikulya yoye", Genesis 3: 17-19.

Adam okwa ninga ngaha omuna-faalama wotete. Omona Abel okwa ninga omunahambo ta lifa oinamwenyo. Kaen okwa ninga omunamapya, ta tekula oimeno. Akushe mehastoli ovanafaalama ova kala va fimana. Kalunga ota longifa ovanafaalama, opo tu mone oipalwifa. Oiwana aishe oi li po noi na eenghono omolwoikulya. Edimo olo eenghono da mauu. Oikulya oyo nangamana.

Eshi Kalunga a ta Adam na Eva mu Eden, okwe va ningila oikutu, e i ninga moikafa yoinamwenyo. Oinamwenyo oyo ya fya, opo Adam na Eva va dikwe. Eli olo efano lokufaneke Jesus Kristus, Omona wa Kalunga, ou e uya mounyuni okufila omatimba ovakwaunyuni.



Tatekulu Adam ta longo.

Ngashingeyi oondima dha thiki. Ondende noshityani nayi kale. Ino thiga etemo poshilwa, sho to ka petapeta. Ngu u na okaputa, ka henda. Longa u mone iipalutha.

ILA KU JESUS

Omukulu gwonale okwa tile: Dha londoka ihadhi yi iita. Otatu tala onguti nkene yi li mokuyanga kwayo. Aluhe oyi na elondo. Oshaa tuu yu uvu kwa ti—pooo, yo mpaka ongohela ya li po. Openi yi ihilila mbela, omengande. Oshike she yi fala mbela? oya tila ekodhi, ya tila okukwatwa.

Ngame na ngoye engande lyetu moka tu nokuhondama oli li peni? Uuyuni mbuka owo ekodhi tali lyana. Ngoka u li mehalakano na ngoka u li maandjeni, tseye, Jesus oye engande lyetu. Shaa tuu wa mono ekodhi lye ku totela, ningina mengande Jesus

**Ope na omaumbo amwe ihaa kombwa. Oimbodi onghe ya dja konhu fiyo ome-
limba. Shiimba osho shi li yo nomo-
mutima.**

OUHAKU WA ALUSHE POKAPA- NGELO ILE MOSHIPANGELO SHAKULA OHAU VELULA TB

Ngenge ouhaku tau diininwa fiyo okehulilo leedula 2, TB otai veluka nawa. Tashi ti, okunwa omi dihapu nokuvendwa alushe ito faula nande fimbo ndokotola ine ku lombwela, otashi kwafa unene shili.

Alikana ngeno uha mwene po nande okunwa omi doye nokuve-ndwa, ndokotola oye mwene ne ku lombwele ngenge osha wana okufaula po manga. Eendudu doshipaani kadi na eenghono okuvelula TB Onghungo tai di medimo kai na sha na eshi shi li komapunga.

EVELUKO LA TB OTALI UYA A- SHIKE UMWE NGE TA DIINI- NE OUHAKU WAYE.

Ovanhu vamwe vepata limwe, ile tuu ovo ve li pamwe na ou ta vele TB, ohava ifanwa ovakwatafani. Otashi dulika va kwatwe koudu ou shaashi omifudo davo odo unene dimwe, otadi shakene luhapu. Hano ngenge ku na umwe e shiivike e li pamwe nomunaudu wa TB, onawa ngeno a fanekwe, opo ku talike ngenge komapunga aye okwe ya oupute va TB. Dimbulukwa nokutya oupute va TB



Poompadhi dha Jesus ope na eholameno.

ngenge ovanini, omunhu iha kala ngaa-shi omunaudu. Na ye mwene iha udu nokuli ta vele. Efano alike tali holo-la osho shi li komapunga aye.

Okudiinina ouhaku wa TB itashi ti oto kala ho nu ashike omi dihapu nokuvendwa. Ou na okudiinina ashishe eshi to lombwelwa ku ndokotola. Shikula shili eemhango daye, ngenge owa hala okuveluka.

Osho yo tuu momaudu makwao eshi luhapu iha tu veluka osheshi ihatu shikula eemhango da ndokotola. Ngaashi ngeno ndi tye, oto vele medimo, to i koshipangelo, to pewa ko omuti, vati ngeno oto u nu ashike omafiku a-tano. Oto u nu ngo omafiku atatu, eshi wa mona wa kala po nawa ofilu, do omi inandi pwa po. Eshi ohashi nyono ouhaku womunhu moudu wongadi.

Ngeno u tule omeva mevela la endama, fimbo inali yada ohali hale okutikila pedu. A tokola nee. Hano inali yada, osheshi ashike la endama. Li endamununa ne u tale nge ito weda ko. Oto weda ko opo li yade. Hano osho shi li yoo nouvela, eshi u wete u li po hwepo. Oto ti nee owa veluka, ahowe.

Elundululo la dja mu SANTA,
L. M. Hauala.

OSHIKOLOLO SHAAGUNDJUKA

OSHO SHOTANGO MOWAMBO.

Oshigongi shaagundjukalongwa osha ningwa lwotango mOnguediva. Omwa li mwa gongala aanasikola mboka ye li mooseminari, nomuupangi nomoosekundosikola. Ehuku lyoshigongi olya li "KRISTUS OKWE TU MANGULULA TU KALE TWA MANGULUKA."

"Otwe shi tameke neimbilo 420. Tate E. Angula, e tu ningile otundimbibeli. Konima yotundimbibeli aatumwa yaali oye tu tumbulile ehuku lyiipopiwa tayi ka kundathanwa kaa-

nasikola muungundu. Okangundu kehe oka li ke na omuwiliki na amushanga. Ipopiwa mbyoka oya li ya kwata oomwenyo dhetu noya pendutha oshindji mutse. Moonkundathana moka otwa dhimbulula EHUMOKOMEHO li li mutse ngashingeyi.

KRISTUS OKWE TU MANGULULA TU KALE TWA MANGULUKA. "Moshigongi moka otwi ilongathana notwa tseyathana kutya, atuhe otwa zalela omunya gumwe. Mutse aanasikola otwa kondjitha kwaa kale we omupika nomuvalwa, nenge omuyuda nomugreka yatopoka, oshoka

nenge ongeyi itatu HUMU KOMEHO.

Taa, ngoka wa li wa hiywa inoo ya ko, wa yagwa, ando wa tala e tomono. Osho osha li shotango nosha li shaa uvitike nawa, ihe hugunina otwa ka hala shi tsikilwe. Otwa hala andola kehe omumvo tu kale tu na oshigongi sha tya ngaaka, oshoka otashi eta uukumwe notashi tsu aantu omukumo. Otatu ka pandula ngele tatu ke shi mona ishewe, iyaloo! Otwa hulitha ishewe neimbilo 420. KALUNGA NETU WILIKE MOWAMBO KAVANGO."

S. U. Iileka.

FIKIFA ELAKA LA JESUS

Ongudu ya huuninwa moseminari mOnguediva oya ninga olweendo 17-25.9,65 mOushimba. Omuwiliki woleendo oye omukulunhu woskola Mikko Ihamaki na hefola laye. Oye a li omushingi wosheendifo shetu. Pamwe nomufitaongalo Paulus Nailenge, ovalongi vetu vavali J. K. Penanen

na K. Niinimaki, ovalongi vomoshihongelo vavali nongudu yovanaskola 20. Atushe twa li 27 mosheendifo shetu.

Pefikamo letu tatekulu P. Nailenge a gandja olweendo lwetu momake a Kalunga. Konima ongudu yofoloma III ya imba eimbilo 488. Manga eimbilo inali hula, loo ehauto ola kolola nokuli.

Otwa ya twe lilongekida okuninga eehungi peenhele edi: Tsumeb, Swakopmund, Walvisbaai, Otjimbingwe, Windhoek nOkahandja. Eehungi detu oda li alushe hadi tamekwa potundi 7.3. Manga inatu tameka oyohungi detu, omuwiliki wetu okwali e na okuyelifila ovanhu kutya, ofye oolyelye, konima tate Nailenge ta ningi epopifo paMbibeli:

Ohungi yotete otwe i ninga mokomboni ya Shomeva, omo mwa ningwa oyodula 7 ina mu pitikilwa nande omweenda. Oh, oto kumwa shili eshi mu na vahapu ovo inava hala okuuda edina JESUS tali tumbulwa mokati kawo. Tangi kuvanini ovo ve na ehalo okuuda natango Kristus.

Oku na eekomboni edi di hafifa unene. Ovamati tave uya nondjungu kongerki. Onda li nda hafa okumona oyongerki edi diyadi nopondje: Windhoek, Walvisbaai na Swakopmund. MOshiwakopo konima yomambo otwa talela po oskola younona vova-Suomi. Oko twa monafana nomubisofi wetu. Otwa imbilafana omaimbilo pamwe nounona. Twa kala nomhepo youmwainafana.

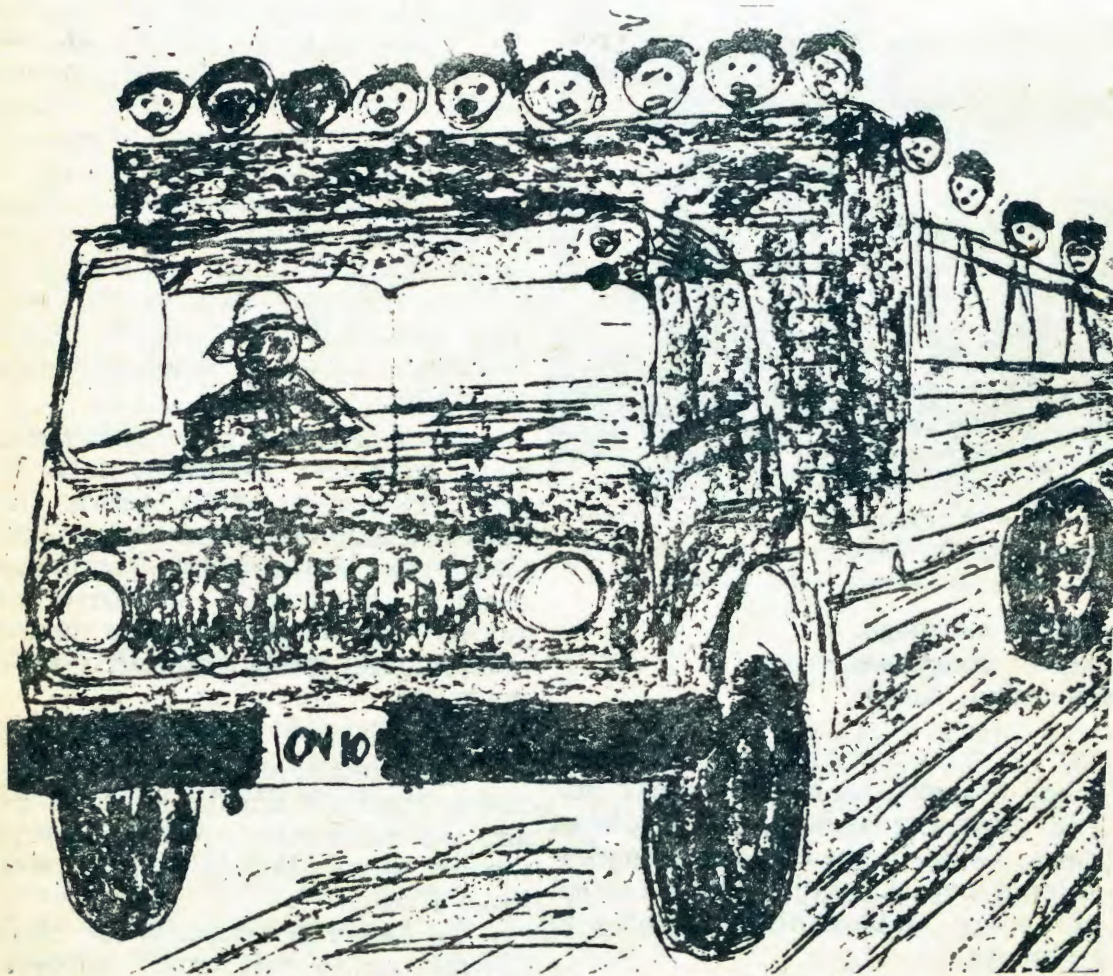
Hatu uya nee monhele oyo yetekulilo lovafita. Ongashi naana omudalakadi ta hambelele omona. Fye otwa tumbulwa shi dulife. Twa talifwa eumbo alishe.

Ohatu pandula amushe ovo mwa li mwe lihepeka noku tu yakula. Oshilonga eshi hafye mwe shi ningila, ndele nee Omwene Jesus.

Otwa mona kutya, epya lOmwene ola tilyana akushe ndele ovalongi kave po. Indileni hano Omwene wetyo a undule ovalongi meteyo laye.

Ponhele yongudu,

Mukuaita N. Ndevahoma.



Aanaskola yOnguediva oya talele po Uushimba. Oshihauto sha li shu udha nomukuluntu gwawo M. Ihamaki a hinga oshihauto.

OUNYUNI OTAU TONGO SHIKE

DE GAULLE OTA KALA KOSHIPUNDI

Omupresidente wa Frankryk, Charles de Gaulle, okwa shiivifa kutya, ota ka ya natango koshipundi eshi taku ka ningwa ehoololo lomupresidente mu Desemba. "Onawa unene nge handi yakula edu eli Frankryk. Onda shi itavela kutya, osho oshinakuwanifwa shange, ndi twikile oilonga yange," osho omupresidente a popya. Omupresidente De Gaulle ota wanifa omido 75 meti 22 la Novemba.

ONGODI YOKUPOPYA POKATI KONDANGUA NOVENDUKA

Opa kala shito ongodi ya dja mOwambo ya fika mOmaonda. Ongodi oyo oya hanaunwa po luhapu keendjaba. Osho yo Ondangua oya kala hai popi nOvenduka moradio, ndele inashi kufa po eemhumbwe adishe natango.

Onghe omuhona omukulunhu weeposa, omushamane L. S. van der Walt, okwa shiivifa kutya, paife otaku ningwa ongodi ipe (kabel) pokati kOushimba nOwambo, opo Owambo i kale hai popi nOvenduka motelefona. Ongodi ei otai fudikwa medu, opo eendjaba di shi lafe.

OKWA YOLA FIYO A FYA

Eenghundana da dja ku Manila otadi ti: Omulumenhu umwe omutungi weengulu, weedula 24 okwa fya fimbo a li ta yolo. Ovapolifi vomoshilando osho Manila ova hokolola kutya, nakufya okwa li ta hokololele ookaume kaye ehokololo loiyolifa. Ola li liyolifa unene nde a kala ta yolo efimbo alishe. Okwa yola nokuyola fiyo a ngabuka.

Ookaume kaye ovo va li po ove mu twala neulumo moshihakulilo, ndele okwa li a fya nale eshi va fika ko.

30 VA FYA ESHI ODILA YA PYA

Odila yovaingilisha yeeindjina nhe, fimbo i li pokuwila mokapale keedila moLondona, oya hwama nde tai topa novanhu 30 va li mo, ova fya. Omidimba 16 oda monika da nipaukilashi manga dikwawo da kala moitekaukila yodila. Ovapolifi novakwafi (ookadimamundilo-firemen) ova li noupyakadi okuyokola omidimba momundilo. Efimbo olo eedila dikwawo da keelwa okuwila mokapale molweviyauko eli nde da kala tadi ingaana ashike pombanda.

OVAKWALUTHERI NO-MBILI YOMIHOKO MURHODESIA

Eenghundana da dja mu Addis Abeba otadi ti: Ewilikongudu loshoo-ngalele shovakwaLutheri, sha ongala mu Addis Abeba, osha shiivifa meti 21 la Kotoba kutya, ola tumina omunisteli wotete wa Rhodesia ongodi omolwekondjo olo li li mo paife pokati koluvala lutilyana na lilaula. Ongodi otai ti ngaha:

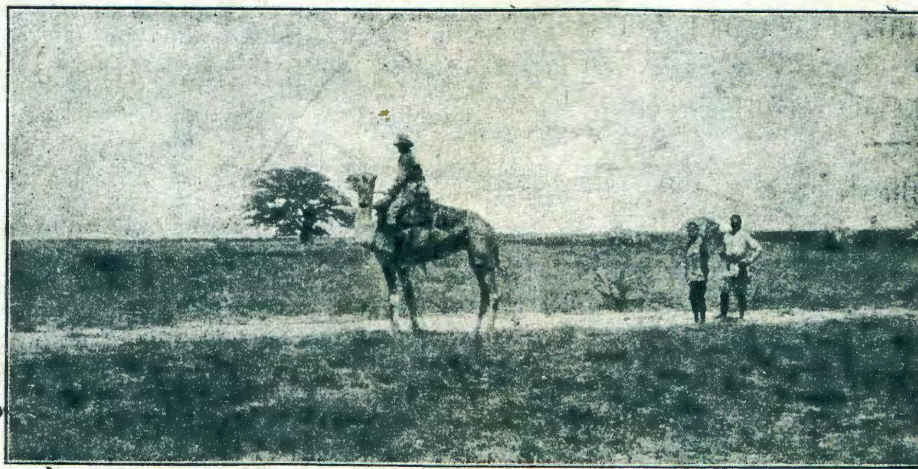
"Ovaponhele veengerki eenghwaLutheri, va dja moiwana i lili nai lili 12, ve li moshoo-ngalele (assemble) shovakwaLutheri muAfrica alishe mu Addis Abeba, ove uya kwove nepangelo loye, u koneke nokudulika koshili youkriste, u tokole nokuyandja emanguluko noukwashili kovana va Kalunga, pehe na onhondo yoludi lwonhumba. Ohatu ku indile, u he-nhuke shili etokolo olo tali twala oshiwana mengwadjulafano. Oshoo-ngalele otashi indilile ombili yomu Rhodesia!"

ONGADU YEEDULA 200 OYA FYA

Eenghundana domu Port Moresby mu New Guinea otadi ti: Omuaustralia okwa konga noupenda ongadu momulonga, oyo kwa tiwa konyala oya kala po eedula 200, tai lyana nai. Okwe i konga oule weefute 20 womeveva.

Okwe i mona nde te i yashe.

Omukongo ou oye Herb Schweighofer weedula 29. Ongadu oya li eeduima 70 mounene nde ya viha otona imwe. Ovanhu vomoilando yaapo ova hepaulula kutya, ongadu oyo oya dipaa eemwenyo dihapuhapu. Oya kala hai kongo nde tai tele aveshe tava ehena popepi nomeva omilonga, oitenhema nomadiva, ya kala po lunga shi fike peedula 200. Lungama nge to i ponghulo nomulonga.



Oonkameli odha longithwa okwenda moondjila oonde. Muuyuni wo otwa kaila tatu ende oondjila oonde. Owa kaila onkameli yini po?

OVAMWATATE

Ohandi inekele tamu hafele okuuda oweenda wange nghene wa tya. Omafiku 7 Sepetemba 1965 onda ya mondjila okuya koskola ku Amerika.

Omafiku 11 ohani tuu oyo otwa londa odila mu Johannesburg. Otwa pita mu Kongo, Madrid Spain na mu Brussel. Twa twikila olweendo lwetu pamwe novaendanandjila vamwe, fiyo twa fika mu New York mu Amerika.

Onda hovela nawa oskola yange pamwe nookaume ve li oku. Mondjila otwa palulwa nawa. Onda mona

omaukwatya mahapu. Onda mona yo oudiinini wonghenda yOmwene ya kalela nge molweendo, onghe ohandi mu hambelele.

Ohandi kundu ovaleshi vOmu-kwetu amushe. Lilongikideni, osheshi Omwene ote uya diva. Lesheni 1 Tes. 5: 21-24; Kol. 2: 6-10 na Rom. 15: 13-14.

Kaume keni,

James H. Kauluma,

The Church Army Training College,
124 Pierrepont Street, Brooklyn,
New York 11201, U.S.A.

AALESHI TAA NYOLA

OSHIGONGI SHAAGUNDJUKA MONDONGA

Aagundjuka yoshitayingerki shOndonga, oya gongalele mOkaku 6-8/8 65. Aagundjuka yomagongalo 10 oya holoka, ihe moluukule egongalo limwe inali ya.

Moshigongi mwa li ombepo ombwanawa noyuukumwe. Otwa popithwa opendji. Omaimbilo nomahambeleso gaagundjuka oga li ga hwa-ma.

Iimaliwa ya zi momalandithopo momagongalo, oya thikithwa moshigongi kaatumwamagongalo. Oya tulwa koaltali palandulathano. Ku mbyoka ya zi momagongalo, kwa gwedhwa iimaliwa yongalo yomoshigongi shoshene nethigathano olya li ngeyi:

	R.	c.
Olukonda	8. 80
Oshitayi	8. 46 1/2
Ontananga	5. 47 1/2.
Oshigambo	4. 47
Onayena	3. 22 1/2
Oniipa	2. 00
Okaku	1. 72
Onyaanya	1. 50
Eheke	1. 30
Omuntele	1. 00

Kumwe R37. 95 1/2

Ongalo yu umbwa moshigongi

R2.71 1/2

Ayiheyihe Kumwe R40.67

Oshigongi sha tonatelwa komu-shitayi T. Shipanga nomuwateli H. Shongolo, omusita gwaagundjuka mOndonga. Ombisofi L. Auala a popitha oshigongi nosho aapopi oye-ndji yalwe ya li po wo. Aawiliki yaa-gundjuka mongerki ayihe, aasamane M. Seppala na K. Dumeni, oya talele po wo oshigongi noye tu tsomukumo.

Medhina lyoshigongi tatu pandula egongalo lyOkaku sho lya yakula nenyanyu oshigongi. Aagundjuka ayehe yOndonga tatu ya halele ehwa-mo lyOmbepo yOmuwa momagongalo gawo, ya kume ko aluhe mu Jesus Kristus.

H. Shongolo.

Ofye oilyo (olutu lwa Kristus) konghenda ya Kalunga aike. Hamolwaashi twa pamba eitavelo lonhumba. Hamolwaashi twa longwa tu dule vamwe ahowe, atushetusha ovomonghenda oyo. Dr.Martin L Kretzmann.



Mboka haa lesa oyo wo haa nyola. Ngo-ka ta lesa olwindji, oti ilongo oshindji mefano ndika aamati otaa lesa.

S. N. Luuly, Transvaal, ota hokolola omumati omukwao, kwa li a kufa omiya e limangeleke. Okwa hangwa po komupolifi nde te mu pula: Oshike to ningi ngaha? Winya: Onda loloka mounyuni mu na oma-piyaano. Luuly ta ti: Pamwe ope na ou e na yo ediladilo eli? Nge we likufa mo mounyuni openi to ka ya? Dimbulukwa Omwene eshi a tya: longa fiyo Omwene te uya, ino loloka.

Luuly ota pukulula vali oonakulanda oipululo keefitola noonaku ka pulula komapya e li kokule kanini nomaumbo avo, ta ti: Ngenge mwa landa ipululo meefitola, okudja opo ohamu ende tamu pulula nde tamu tandumuna meendjila, moitauwa nominghenye. Ovaendinandjila tava hepekwa komikangha odo. Kokololeni nawa. Inamu pulula vali keshe apa mwa hange. Pululeni ashike momapya. Oveta yo nge ya hange to pulula moshitauwa, otai ku kwata.

‘Ileni nku komeya. Nane mboka mwaa na iilando, ileni, ilandeleni iilya ne mu lye; eeno, ileni, ilandeleni oshima mwaa na iilando,’ Jes. 55: 1.

LUNGAMA NOPILIMUSA (PRIMUS)

Omukainhu omulaule, Lais Izaks (17) molukanda likulu la Venduka, okwa fya molwoipute yomundilo. Okwa li ta pombo opilimusa yaye. Oya topa nomundilo wa kwata oikutu yaye. Eshi sha landula ko, ito shi lombwelwa vali. Okwa twalwa neendeleso moshihakulilo tau talwa pofingo, fiyo a hulifa.

AAKWAMBI AAHOLIKE

Onda talele po otsilongo tseni, nonda li nda panda, sho tsi li po tsa tsituka. Evi nomashala oge li omape. Aantu itsewe, oya tsituka, aapelela.

Onda talelele po omakulukuma eengulu dhaatumwa mboka ye eta ombuto ndjoka ya tsitukitha evi. Nando dhi li po ngeembila, nani ongii-lya ya kunwa mevi, oya mena, ya taandela pomashala ogendji.

Eengeleka odhi li motsilongo. Iipangelo iinene itatu tai ka kala mo. Otsilongo tsi na aakuluntu yatatu mboka taye tsi lele.

Otsilongo tsi na eesitola dhokuyakula otsigwana. Ooyene yadho ya gwana ya galikanenwe. Oshoka taa yakula otsigwana pahalo lya Kalunga.

Onda talele po itsewe omashala omanene gaali, ngoka ga pendula mungaye ehala, ndi mu tsangele:—Eembila dhaakuluntu yotsilongo, aakwaniilwa.

Ootatekulu ne, mboka yatatu tamu lele otsilongo ngashingiika, otandi eta kune otsinima shika, mu tsi kundathane naantu yeni. Omu uvite ngiini, iinima sho ya tsituka iipe neem-bila dhaakuluntu mboka mu li pomashala gawo di li ngaaka? Kunda-thaneni oombila ndoka dhi opalekwe pamukalo gwongolo. Kalunga ote mu yambekele omalelo geni, nge tamu simaneke aakuluntu.

SIMANEKA HO NA NYOKO U KALE U NA ELAGO NOMWENYO OMULE KOMBANDA HEVI

Otandi mu kundile po unene. Andreas Kanalelo.

ESHIIVIFILO

Otamu dulu okutuma omafano pamwe nomahokololo eni, nge mwa hala a tu'we mOmukwetu. Hano, oshinyolwa nashi kale shi na ekwatafano nefano. Omafano naa kale aye-la nawa. Shanga nawa kutya, olyelye a fanekwa na openi a fanekelwa nomolwashike. Tumeni omafano ha omidile. Nge twa kosha mo letu, efanoloye ohatu li shunifa.

Ngenge wa hala okunyamukulwa onawa yo to tumu ekutu nostombe, nena aishe otai ka enda noupu.

FINSE SENDINGDRUKKERY
OVAMBOLAND
ONIIPA