



OMUKWETU



No 21

NOVEMBA

1965

KALENI OUPAFI

Mat. 24: 36-44.



*“Hosiana, na nangekwe noupuna ou te uya medina lOmwene, Hosiana mokombadambada”.
MOKrismesa yomudo ou owe mu teelela tuu?*

Oshondaha yonena tai tetekelele oshondaha yetokolo, otu na elaka le-londwelo olo Omufita Jesus te li udifa, eshi a hala oshiunda ashishe shi mone omwenyo waalushe, Jes. 40: 11.

“Kaleni oupafi”. Ondaka ei Jesus ote i tumbula nomwenyo u yadi ohole noshisho mokuudila eemwenyo adishe olukeno; adishe di hupifwe mefiku letokolo olo li na okuuya. Kaleni oupafi; osheshi efiku nefimbo kape na umwe vali e li shi Tate tuu aeke e li shi. Omunelao oyoo e mu teelela. Kaleni oupafi. Jes. 30: 186.

Ongashi sha li pefimbo la Noa, aishe ya talwa tai humu nawa komesho, ouwa wa osho ashishe sha lukwa ounyuni owa temuna. Osho nefimbo

olo linene letokolo tali ka holoka, pefimbo opo “aishe oi li nawa”. Kape na ondjala, ohatu li, ohatu nu, omfundula otaa danwa. Opo tu apa omunhu wOmwene ta lombwelwa: Kaleni oupafi! Omwene ote uya. Heeno, osho ta kala, oilonga ongoshito, oo om! om! ongonghela ongula momapya omo. Otu li, tu li ongonghela omutenya moinima yetu. Ndele tala, oshilongo sheulu otashi tambula ovateeleli vasho, oonakukala oupafi. Ha efiku, ha fimbo, ha nhele na ha eitavelo la kofa. Eteelelo mokukala oupafi fiyo Omwene te uya.

Tala efaneko loukadona omulongo, Mat. 25: 1-13. Omwene Jesus okwa hala oku tu londwela tu kale

twa londoka ndele twa yombama mokukala meteelelo ndele tu li wapalele. Natu indile Omhepo Iyapuki tu i pe-we i kale mufye. Opo tu kale eelamba di na omaadi ndele da tema efimbo keshe mokukala oupafi.

Onghe ovaholike va Jesus, ohatu popifwa tu kale oupafi, moilonga, momaumbo, meendjila, pedu momhepo nokefuta omouyehamwe moipangelo, moivilohafo nomoivilonghali yavakwetu. Tu na alushe elukombadi moshipala nopeenhulo. Ofye ovateeleli, ame omuteeleli wa Kristus!

“Maran ata!” Omwene wetu ote uya, tu kaleni oupafi.

Eimb. mEhangano 606: 1, 5.
Metusalem Shilongo.



OMUKUETU

Sepetemba 1965

OSHIKE MBELA TASHI UYA?

Momido da pita, inapa popiwa unene ovalaule moifo nomeeradio. Paife apashe na akushe oto udu eenghunda na dinene domapangelo tadi popi ovalaule. Oshike mbela shi li po?

Nale ounyuni aushe owa pangelwa kovatilyane. Paife oinima oya ninga imwe ilili. Paife ovalaule va fa tava mono yo olufo okupangela oiwana. Omalunduluko aa otae tu kumwifa. Efimbo li li ngaha otu wete ola pya. Osho yo efiku la huuninwa la ehena popepi, nde Kalunga Omushiti wounyuni, ota wapeke tete ounyuni. Oye ta endifa oiwana noiwana. Eendjovo daye tadi shitulula ounyuni. Kalunga oye a shita omaliko oo ovanhu tave a kondjele. Oye ohe yomupofi nomulinawa. Aveshe ovana vaye nde a hala okuva ongela moshiunda shimwe. Kapena omalimbililo otape uya oinima ipelela, tai uya nde itai kelelwa komukwadu. Ouhamba wa Kalunga ou li meni mufye nde tau longo mo oshilonga shao.

Enghundana paife tadi popi omaitavelo e lili noku lili, nghe taa kondjo nde a hala okuhangana. Kashi na oshilonga kutya omukatoli, omuvangele, omwanglikana ile omushikeshike, ova hala okuhangana. Otava ningi nawa, osheshi Kalunga kaashishe umwe aeke ti. Nande omaitavelo a yololwa koulunde womunhu, Kalunga a hala avesheveshe. Aveshe ovaye. Jesus okwa fila ovanhu vomaitavelo

VIA DOLOROSA=ONDJILA YUUEHAME

Ndjila yomusigakano ya Jesus ondhigu ndjo. Gabata oloyo edhina lyeha lyepangulo. Ngoy' u shi oko, ngoy' u shi oko, oko tuu taku zi ondjila ondhigu ndjo? Via dolorosa, via dolorosa ndjila ndjo ondhigu tai yi kuGolgota.

Temba nomwidhi - omo mwa lala



Okanona ka kwiininwa mondikwa ya yina otake tu longo oshindji. Osho twa kwiininwa kaatumwa sigo nena. Osho ohole ya Kalunga ye tu kwiinina muuyuni mbuka. Osho te ku kwiinine wo. Osho ta kwiinine Ongerkki yOwambokavango nota kwiinine wo Suidwes alihe. Megameno lyOmuwa kamu na iiponga.

aeshe. Ohonde yaye yondilo oya shisha molwakeshe. Inamu litongola! Holafaneni! Kaleni kumwe! Longeleni kumwe! Nelai ola filwa kuJesus. Kashi na yo mbudi nge epangelo olomutilyane ile olomulaule. Epangelo kesho otali dulika koshili ya Kalunga. Omunhu na dulike yo kepangelo nde unene kepangelo la Kalunga. Elaka keshe nali fimaneke edina lOmwene.

Itatu dulu okunongela omadiladilo a Kalunga. Olye ta wana po nge ta pangula ounyuni? Ngenge ta tenge, iha kwatelwa. Ofye tu na ashike okuliyandja kuye. Otu na okudulika kuye. Otu na okudiinina oilonga yomake. Okwa tiwa: Ou ita longo ina lya. Oshiwana shi hole oilonga yomake, oshiyamba. Onyalo oyo oulunde. Ou ta shelemba ashike nde ina hala okulonga, na dengwe ile na talwe oshingadja shoshiwana. Ebandela letu nali ninge Jesus nedina laye nali tu pangele, nena aishe otai ka enda nawa. Oye ta shitulula aishe i ninge ipe.

Omukwaniilwa, ngoka ijandja po nosho epangelo lye lya pwa. Mevi lyuulunde, mevi lyuulunde Oy' omukeenandjo ngu i idhimbike ye mwene. Via dolorosa, via dolorosa, ndjila ndjo ondhigu ya zi kuBetlehem.

Marja-Terttu Tolamo,
Mel. Tuskien tieta Hän.

OVAKWALUTHERI VANE OVA KUNDA OMUPAPA (POPE) MOSHOONGALELE MU NEW YORK

Omupapa PAUL VI, womu Roma, okwa talela po Amerika. Olwotete esi a lyata omhadi muAmerika. Elalakano loweenda waye olo okuudifa ombili yoiwana. OvakwaLutheri ova li yo mongudu yovawiliki vomaitavelo e lili noku lili, eshi va ka shakeneka omupapa eti 4. 10. 1965, muAmerika.

OvakwaLutheri ovo va li moshoo- ngalele osho ovo:

-Dr. O. Fredrick Nolde, omuwiliki (director) wehangano leengerki moinima i lili noi lili.

-Dr. C. Arild Olsen, hamushanga wehangano lokukala kwovakriste nehangano leengerki nomuwiliki wehangano leengerki novakwashiwana mongerki onghwaLutheri muAmerika.

-Mr. Arthur B. Gunnarson, omupashukili wehangano lomakwatafano omakwaLutheri.

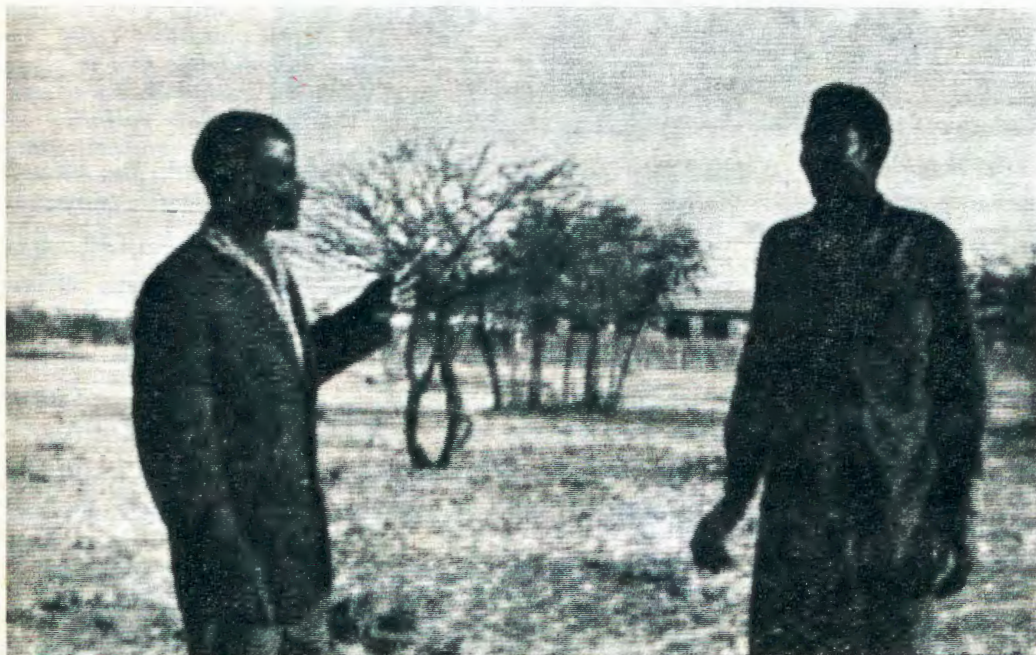
-Omuhongi Richard J. Niebanck, omukwafi womafina nomalongekido mepangelo loufita (ministry) meengerki eenghwaLutheri mu Amerika.

Dr. Nolde okwa ti: "Oshilonga shepopyo lomupapa Paul, eshi ta popifa ngaha oiwana ya hangana, otashi tungu ngenge ovanhu noiwana momafiku okomesho, omo mu na omalundululo nomakondjo manene, tava pewa omukangha mupe muwa, omo oiwana younyuni tai dulu okukala momombili yoshili nokutululumukwa". Kombinga yoiwana ya hangana, dr. Nolde okwa ti: "Mu kale hamu pwilikine yo eshi eengerki da hala okutya kombinga yoinima i lili noi lili nomikalodipe, omo tadi dulu nawa okutwikila nokulonga oshilonga shado nomomatokolo manene. Eudeko meendunge doshili okuuda ko oupolotika, li konakonwe nounongo nekwafo okweta nokukongela oiwana ombili yaaveshe kuringwe, ngenge oiwana ya hangana (United Nations) oya hala shili okukondjela ombili younyuni".



OKA ANDJETU

EGONGALO OMUNTELE, EHOKOLOLO LYALYO



Omusitagongalo Juuso Shikongo kolumoho ta popitha omukwanegongalo.

Egongalo ndika olya valwa kOngerki Onkwaevangeli pa Luther yomOwambokavango eti 1 Oktober 1963. Oli li moshilongo Ondonga kUumbugantu.

Oli na aakwanegongalo 1,356. Egongalo ndika olya ekwanambwiyu negongalo Onangalo moshilongo Uukwaluudhi lya dhikwa wo eti 1 Oktober 1963.

Ngashi egongalo epe li noompumbwe odhindji, osho na ndika wo li li. Olya tunga nga okanyanga okashona kolyonena. Ohali ningile elongelokalunga metsali lya kumbwa nihenguti.

Otandi tumbula oshimpwiyu shimwe lye shi humbata pethimbo ndika, no li li nga poku shi mana po: Otali itungile okapangelo omolu uukokule walyo niipangelo yomoshilongo. Osha fa kaa pu na ethimbo ele li mane po oshilonga shika.

Otandi tumbula oompumbwe dhegongalo oonene dhi vule oonkwawo

odho:

1. Ongerki
2. Ogendjo
3. Oshitaafula shokutsilika oonomeri melongelokalunga.
4. Oonomeri dho dhene wo kadhi po.
5. Omalapi gokuyala koalitari yo metsali melongelokalunga.

Ondi shi wete kutya, opu nokupita ethimbo ele okumona oompumbwe ndhika.

Pethimbo ndika ombepo yaakriste oyendji oya suunkundi, unene aalumentu. Ihe ongundu onene wo otayi kondjo nokukondjela Omuwa gwawo negongalo lye. Omolwaamweni egongalo olya nyengwa okutsakanitha oondjambi dhaayakuli yalyo.

Nomahaleloyambeko miilonga yOmuwa gwetu.

Juuso Shikongo
Omusitagongalo
Omuntele, 27.8.1965.

UHE NA OMUTANDA KU NA NGOMBE

Eyeletumbulo eli otali faneke kutya eumbo lihe na omumati ile okakadona, kali na ovanhu. Oshiwana shihe na ovanvasha kashi shi oshiwana. Hano oshiwana osha djala efimano omolwovanyasha. Oshiwana shetu shOwambo oshi na tuu ovanvasha tava fimanekifa oshiwana?

Omuniyasha omukwetu, pamwe ove oshikotongo shoukolwe? Pamwe ove oshinyikile shoipala? Pamwe ove oshikwakwa shoulunga nokunyeka nokudipaa vakweni? Omawii aeshe aa a kondjifa, e ku kale kokule, opo u kale omuniyasha wouyelele ta fimanekifa oshiwana. Imba mEhangano 524.

Johannes E. Hautoni.

OHOLE YA KALUNGA

MEtestamenti Ekulu omuprofeti Jona oye awike a pewa oshilonga she mokati kaapagani. Nembo lye alihe tali popi ngaaka oshilonga mokati kaapagani, kokutya etumo.

Kalunga ina hala omupagani ta sile muulunde we, ihe okwa hala aantu ye ya ye kaapagani noye ya pukululile ondjila yomwenyo.

Jona mwene kee vule aaniinive, oshoka na ye wo ina vulika kuKalunga nokwi ilongele ngaaka eso.

Na Jona okwa kala mokati komatilitho geso. Eso olyo edhigu kuye nongashi komupagani wo. Ihe pokuningina moshilambo sheso, Jona okwa li e shi shi ondjila yegalikano. Moluhepo lu thike mpoka oye ta vulu okutaalela ontempeli ya Kalunga. Moothina ndhoka natango oye ta vulu okutya: Omuwa Kalunga kandje.

Jona okwa silwa ohenda, okwa mono ehupitho lya kumitha, okwa mono ompito ompe okuvulika kuKalunga.

Ihe itatu mu adha oye a hololele aaniinive andola nenyanyu esilohenda e li pewa nehupitho ekumithi e li mono.

Aawe, Jona sho kwe ya kumagidha noohapu oonkukutu nokwa mono, nkene aaniinive yi itedhulula, nena Jona a geya, Kalunga sho e ya silohenda.

Jona mwene opo a silwa ohenda nokwa hupithwa meso, ihe tatu adha a geya, Kalunga sho a silohenda aalunde yalwe!

Natango Kalunga okwa li e noku mu pukulula nolumono lwa koko lwe mu shiga, ihe lwa sa mbala.

Ohole ya Kalunga ya dthingilile oshilando ashihe oshinene noshu udha uulunde, aantu yasho ayehe agoya niinamwenyo yi li mo notayi ehama. Ayehe nayihe Kalunga oku ya hole, nomwenyo gwe tagu yuulukwa a wape okusila ohenda aantu niinamwenyo. Ongoye omuntu ontseyele wa fa Jona, etha Kalunga a nengeneke omwenyo gwoye omukukutu, thikama ngu tameke okuhokolola apehe nakuhe esilohenda lya Kalunga lyaa nondjele, kutseni atuheni inatu li ilongela.

Liina Lindström.

OSHIKOLOLO SHEGUMBO

OKU NA OINIMA IHAPU HATU I KONEKE MOMUKIFI WA TB.

TB ohai kala nomunhu efimbo li fike peni?

Eembuto doudu ou wa TB oda kindja, onghe ohashi dulika nosha pumbiwa ngeno omunhu a hakulwe oule weedula mbali:

Ngenge omunhu okwa tameke okuholoka oipute inini komapunga, iha shi pumbwa nokuli okukala monashalesha, osha wana ashike a kale ha vendwa kokapangelo popepi kani, hano ta kala ha di keumbo; ye a kale ngo ta longo oilonga yaye. Ndele na kale nee ha diinine ouhaku waye. Ngenge omunhu ta diinine ouhaku waye pefimbo ashike ta yehama unene: Ngaashi ngenge ashike oipute ya kula no ngenge komapunga ku na eembululu, oipute neembululu edi oha-di tamunuka tadi lihanene omapunga, itadi veluka diva omunhu ta kalekwa monashalesha, okuteelela fiyo oipute ya veluka, lo efimbo nee lile.

Nongenge omunhu ta lekelwa monashalesha, ota kala ngo nokutwikila ouhaku waye fiyo nokuli oule weedula mbali. Ndokotola oye tuu e na ounongo. Fimbo ina tya opuo, na ove ino mwena.

OMOLWASHIKE HASHI DULIKA OMUNHU E LI NAWA NDELE OTAKU TIWA NATANGO NA TWIKILE OKUHAKULWA?

1. Ngenge omukifi wa TB tau tameke, oupute vayo ovanini. Luhapu omunhu ito dimbulukwa sha nokuli, ou wete ngo omapunga taa longo nawa, ndele ndokotola tuu, ile eminikilo, olo hali tale meni momapunga



Aantu mbaka oye li poshililo. Osho aana-ndunge haa li ngaaka kiitafula. Tala, ope na mpaka poshililo iikulya yomaludhi. Iikulya otashi ti omwenyo. Lya iikulya yomaludhi, u kale nolutu lwa pama. Osho wo iikulya yokomwenyo yi noku-liwa.

etu la mana eemhata. Omunhu oku udite a kola ngenge komapunga aye ku na oupute vanini, ndele ngenge oupute ava tava tane notava kulu neembululu tadi tameke okuholoka komapunga, opo ashike omunhu ha udu ta yehama nota monika oye omunaudu shili. Oipute nande keya kula ohai dulika ashike okumonika mefano, ile tuu oyo ya kula ihai monika nomesho ashike ngahenya, okomashina ashike.

2. Ngenge umwe okwa hakulwa nawa, e wetike a veluka ta dulu okulekelwa a dje monashalesha, oipute oya veluka, shapo oya ninga ashike oivadi. Moivadi omu omo hamu kala mwa dama eembuto da TB. Omolwaasho haku tiwa omunhu na twikile ouhaku waye ou weedula mbali konima yokudja monashalesha. Ndele ngenge ouhaku owa hulifwa molwaa-shi vati omunhu e wete e li nawa, eembuto odo de liongela moivadi, oha-di twipuka ndele tadi tameke okulihanena omapunga, tadi ningi oipute neembululu dipe. Embuto da TB oda kindja. Otadi pumbwa okuhakula shili efimbo lile, li fike peedula mbali.

Lungama uhe likufe mouhaku fimbo ndokotola ine ku lombwela.

Elundululo la dja mu SANTA,
L. M. Hauala.

OHOLE YA KALUNGA

Omuprofeti Hesekiel, sho ta popi iilongankondo yOmuwa, oye ta tumbula nokutumbululula: oyo taa ka tseya ndje, ongme Omuwa. Aaisrael naapagani oyo ye noku shi mona.

Omuprofeti Sakaria ta mono, nke-ne aapagani taa ka kongga Omuwa, Sak.8:22. Omuwa oye ta kala nokupangela evi alihe niihupe yaapagani taa yi ku Jelusalem okwinyongamena nokugalikana Omuwa shaa omumvo, Sak.14:9.

Elaka lya hugunina mEtestamenti Ekulu alihe membo lya Maleaki tali ti: Ongame opo ndaa ye ko, ndi ka dhe-nge oshilongo noku shi hanagula po sheke.

Omuwa okwa longekidha ehupitho, opo evi naantu yalyo yaa yonuke po.

Omolwa shoka aahupithwa ye ye nokuhokololela ayehe ehupitho ndika lya Kalunga.

Kalng ne tu sile ohenda twaa kale aahethi moshilonga shOmuwa twe shi thigilwa.

OKANDJUGO

MOmukwetu gwaMalitsa okwa li oshinyolwa, UUPUKA U LI MOLUTU LWOMUNTU. Notwa leshe: "Longitha okandjugo."

Eeno, otatu pumbwa shili okandjugo, tu kale nawa notwaa taandelithe omavu nuupuka.

Nkene OKANDJUGO TAKA TUNGWA:

1) Tango to tala ehala ewanawa-kokule kashona negumbo lwokuuninginino, opo ombepo mokupepa yaa itse megumbo. Ishewe okandjugo otaka kala kokule nomadhiya nomithima dhomeya, opo omeya gaa nyatekwe nuupuka noombuto dhomavu.

2) To fulu oshilambo oshishona ihe oshileleka.

3) To tula iipilangi iyaali koombinga noombinga dhoshilambo.

4) To tula isbewe iipilangi iyaali komitse nopooaha, ihe ya shigakana.

Pokati oku nombululu.

5) To ningi oshisiikilo niipilangi iishona u siikile ombululu.

AANONA NAANEGUMBO AYEHE OTAA PUKULULWA OKULONGITHA OKANDJUGO yaa nyateke iipilangi noya igilile okusiikila ombululu. -Ombululu tayi siikilwa nawa opo oondhi dhaa mone ompito okutaandelitha omavu.

Okandjugo una ku udha, naka filwe po mbala. Opo ihe ku ningwe okandjugo okape.

Okandjugo oko ka fa ka dhinika mokutala, ihe mpoka aantu ya hala okuhuma komeho taa dhiginine uundjugo. Ihaa nyateke iihwa nenge omalundu. Notse atuhe tu shi shi nawa kutya, uundjugo tau kwatha muundjolowele waantu.

EGUMBO KEHE TALI PUMBWA OKANDJUGO.

Omupangi Ruusa Namuhuya

OSHIKOLOLO SHAAGUNDJUKA

ONANDJOKWE OPLEIDINGSKOOL
VIR HULPVERPLEEGSTERS

ONGANDJERA OPLEIDINGSKOOL
OSHIGAMBO HOERSKOOL

Ngoka a hala oku ka longwa moskola yimwe yomwaandhika, na ka hololele omukuluntu gwoskola ye mwene edhiladhilo lye, omumo nguka gwoskola manga inaagu poka. Ekonakono lyokutaambwa otali ka ningwa mOmandaha, 24 Januali 1966 okuza kotundi 8.00 yongula pomahala agehe ga tumbulwa metetekelo. Kehe ngoka te ya kekonakono, e nokukala a nyola ekonakono lyo-standa VI nokuli. Oombapila ndhika mbali nadhi etelelwe: 1) eindilo lyokutaambwa lya nyolwa noshikaha shomukonakonwi mwene, 2) ombapila yegongalo. Iilongwa mbika tayi konakonwa: Oshiafrikaans, Oshiingilisa, Oshindonga, Omwaalu.



Mefano eli omu na ovalongwa vomOshigambo. Okudja kolumosho ovo: Lahja Kapofi, Leonard Taapopi, Matti Amadhila, Nikanor Mbumba tava popi nomufimanekwa Efraim Angula.



Mbaka ye li mefano oyo okuza kolumoho Ambrosius na Daniel Namuhuya, Otaa ilongo ngashingeyi moRepublika.

NGENGE OMHATA KA PULE OMBIBELI

Etumbulo eli tali ti: Omunhu ina hala nande okuweda po sha, okwa hala okupopya oshili. MOmbibeli omo tu na oshili ya wanenena. Mounyuni ou wehenokomeho vahapu otava tuvike Ombibeli nde tava popi osho va hala vovene. Vahapu tava popi ashike osho te shi kufa mehumokomesho shi li meni laye. Tala Jesus mwene eshi ta ti: Mat. 12:36; Mat. 5:37; Joh. 6:38; Luk. 5:31-32. Hano inatu tuvika Ombibeli, oyo nai tu pangele. Ovo ve li moupika wounyuni inatu va tala ngomalai, ndele ne tu va indilileni.

M. N. Jonatan, Eros, Windhoek.



Ovanaskola vOnguediva, Okahao nOshigambo ova fanekwa apa, va li moshongalele shavo mOnguediva.

OMUKWETU TA TSEYITHA

Sho twa hala okukatuka onkatu, nomolwomatompakano ga kala po omumvo nguka molwoofuto dha halakana, onke:

KEHE NGOKA A HALA OMUKWETU, E NOKU-MBESTELA IFO IYALI MOMWEDHI KEHE, IHE E NOKUFUTA POLUMWE:

MOWAMBO: 60c.

KUUSHIMBA: 80c.

Endelela ano u mbestele Omukwetu gwoye mbala-mbala omumvo nguka manga inagu sa nomanga edhina lyoye inali dhimwa po, opo u pewe oshifo shoye petamekoelela lyomumvo tagu ya. Aataambi ayehe naa fute pokwinyolitha kwawo, ha oongunga.

OMAGANO

Mboka ayehe ya kala haa taamba oshifo shimwe momwedhi, naa mboka wo taa mbestele oshifo shomumvo tagu ya ngashingeyi momwedhi ndhika mbali, ano omadhina gawo taga adhika ga thika huka nokuli noya tumbula kutya, embestelo lyawo olyomumvo tagu ya, kehe gumwe ota pewa iifo iyali omagano, ano iifo ya Novemba na Desemba momvula ndjika.

Enyanyu, ohole nehawo ndyoka lya pangele moshifo shomumvo nguka, oyo tuu ndi shi tali tsikile nomumvo tagu ya! Omuwa gwetu na hambelelwe!

ONGALO YOVATU-MWA KU ETHIOPIA

Ovamati ovo oonakuhola oshilonga keshe shongerki yavo, mololweendo lovatumwa vongerki yetu koshoo-ngalele ku Ethiopia, ovamati ovaVenduka ove shi kwata konyanya. Ta, opa li tapa ti pwaka po tapa ti penu.

"Keshe umwe ota yandje nee ingapi mbela?" osho va pulafana. "Ongerki yetu oyo i fifwe ohoni keengerki dikwao, eshi itai dulu okufutila ovatumwa vayo ile? Ahowe, nandenande, itashi ningwa!" osho va udafana.

Opa li tapa ti pwaka. Okwa ningwa omafiyafano meengalo deengudu, yekoleko, yeshasho nongudu yovanalwiimbo nongudumbibeli. Ondwi oya li ya twima. Eshi oimaliwa ya ka valulwa, na ove mwene shi litalela apa:

Okomboni ya yandja R74.71
Odolopa -,,- R28.48
Keleine - Venduka -,,- R10.52 1/2

Kumwe: R113.71 1/2

Oshinima eshi sha longwa kovaVenduka, otashi holola omwenyo wovamati nehawo lavo okuhola ongerki yavo. Inava hala ohoni. Ongerki yavo oi li meengushe. Inava hala ounyuni aushe u ude kutya, ongerki yOwambo ya nyengwa kofuto yovatumwa vayo koshoo-ngalele. Ovanyasha oshike hano? Johannes 1:14.b, ta ti: Onde mu shangela ovamati, osheshi omu na eenghono, neendjovo da Kalunga oda kala mu nye, ndele mwa dula omunawii eenghono.

Ovamati amushe mwa yandja ngaha, iyaloo! Kalunga ota yambeke shili ongerki yeni. Osho yo ote mu yambeke nye vene neyambeko liyadi tuu ndo!

Ekundo leni eimbilo mEhangano 505.

Ev. M. Kaijamo.

"OTSE KATU NA MPAKA OSHILONGO TASHI KALELELE"

Omusamane Ekandjo lya Awene (Omundambi gweengolo), okwa li gumwe gwaakengelikengeli ya Ndonga. Omukunda gwe Okambonde okwe gu lele nombili nonoondunge. Oohepele dhomukunda gwe ine dhi ekelahi, ngashi aanenentu ooyakwawo haa ningi. Omukunda gwe okwa li e gu putudhila iilonga yepya. Kali e hole nando omunanyalo, oku hole aantu taa longo yo taa li: "Sha nakulya osho sha nakulonga", osho a lombwele aluhe aantu ye.

Omusamane Ekandjo okwa kala omupagani sigo onuumvo, nande okwa li ngaa gwopopepi noondjugo dha Nii-pa. Nuumvo ngiika sho a mono omathimbo ge ga thikana, okwa shashwa. Edhina lye lyuushashwa oyo Elieser Rudolf. Inapu pita ethimbo ele, omusamane Rudolf okwa mana oondjenda dhe 8 Kotoomba 1965. Kalunga na hambelelwe sho a silohenda omupiya, opo e mu thikithe moshilongo shaaluhe.

Kalunga na hupulithe oothigwa dhomusamane, dhoyana nodhomukunda. Otatu indile wo Kalunga e ya pe omuleli omunambili ngashi nakusa.

Egumbo ndi ewanawa,
Megulu ndi li na,
Ketungo ndi ewanawa,
Oku nda yuulukwa.

J. J. Nangutuuala.



Omumvo kehe Omuwa ohe tu pe omagano. Ohe tu yambeke nuuyamba. Mwa pewa omagano, gandjeni wo omagano.

OUNYUNI OTAU TONGO SHIKE

OMUTANZANIA OMUTEOLOGI OKWA NINGA OMUPRESIDENTE WONGERKI (SINODE)

Eenghundana da dja mu Addis Abeba otadi ti: Rev. Judah B. M. Kiwovele, omulongi mofikola youfita yedina Theological College popepi na Arusha, okwa ninga omupresidente wehangano lokusuid yongerki onghwaevangeli paLutheri mu Tanganyika.

Omushamane Kiwovele okwa longwa nawa outeologi mondodo yopombada mu Chicago muAmerika. Principal wofikola oyo, Rev. Mshana, okwa popya moshivilo sha presidente Kiwovele ta ti: "Ovadalelwamo va longwa nawa outeologi otava pumbiwa unene apeshe, ngashi: mewiliko longerki nomomanongelo (institutions) ongerki, ngashi meefikola dokulonga Ombibeli, meefikola douteologi, meefikola dopombada nomomanongelo makwao."

BECHUANALAND OTALI MONO ELIPANGELO

Moshifo "The Windhoek Advertiser" sheti 14/20/65 ke pandja lotete, oku na onghundana tai ti: Seretse Khama, omuministeli wotete wa Bechuanaland, okwa shiivifa kutya, Bechuanaland otali ka mona elipangelo muSepetemba omudo tau uya.

Elondwelo. Khama okwa londwela nediviliko oshiwana shaye ta ti: "Efimbo eli olo omhito yehafo, ohandi mu londwele nawa. Mu shiive kutya, ngenge edu letu la mono elipangelo, hakutya tu kale twa mbwata ashike. Ndelene otu shilafane nde tu kondje noilonga, opo tu hepulule edu letu."

SUIDWES LETU OTALI KUNDAFANWA KONYANYA

Natango mu Den Haag, eenghundafana da Suidwes odi li mondabo. Moifo aishe younyuni nomeeradio eenghundana edi otadi popiwa. Ova-ponhele vepangelo letu otava kundafana Suidwes pamwe nomuponhele wa Liberia na Ethiopia mombelewa yemhangu dounyuni (International Court). Ovakriste tava teelwa va indilile eenghundafana edi kuKalunga kutya, "ehalo loye nali wanifwe".



Ovamati va fa tava tumbula ngaha:

Oufiku wetu woupaani, opaamha tau pu po. Ehuwa tali tende tu mone ehupifo. Kwove hatu tale noku ku indila: Onghenda yoye inene Omwene i tu pa.

OSHIPONGA SHOMUNDILO WOMEDU

Eemaila 50 okudja koshilando Manila, ope na onhele ya lukwa Taal Volcano. Ponhele oyo ope na omundilo u li medu wa shitilwa mo. Omafiku aa adja ko, omundilo ou owa topa mo na osho sha kunguluka mo osha tandavela molupe lomeva omundilo. Okwa hokololwa kutya, ovanhu 300, va li tava ka holeka omwenyo, va li meembautu mbali, ova mbonyokela ashike moshipilili eshi shomundilo. Omukulunhu wodila umwe, Captain Generoso Lopez, a li ta tuka nodila yaye oule weefute 16,000 nokwa lieemaila 30 kokule nonhele ei, okwa uda etopo olo nde a mona omhepo ya laulikwa komwifwi nokomute. Opo eshi osha landulwa komutemo munene womundilo.

Vati onhele ei Taal Volcano oya topele vali modula 1911 novanhu 1,300 noikunwa ya li pedu leeshikweya (square) 2,000, okomupeshe. Oshiponga sholudi olo osha holokele vali ponhele oyo momudo 1754.

OMAUMBO 460,000 TAA PUMBIWA OMUDO KESHE

Vati omaumbo 460,000, otaa pumbiwa okutungwa omudo keshe mu Mexico, opo ovanhu vamo va mone omaumbo. Ovanhu vomu Mexico ova-hapu unene, ova tengenekwa ve fike po 40,000,000. Onghe epangelo lamo li nokutunga shili omaumbo mahapu, opo li kwafe ovanhu valo.

SUID RHODESIA OTALI KUNDAFANWA

Ope na paife eenghundafana da kwata monghama pokati ka Ian Smith, omuministeli wa Rhodesia na Wilson, omuministeli wa Engelanda omolwemanguluko la Rhodesia. Eenghundafana edi oda nyaa komunhu nde Kalunga aeke okwa shiiva nale kutya, epangelo la Rhodesia otali ka kala lomulaule ile olomutilyane.

OSHIGONGI SHELAKA LYONDONGA NUUKWANYAMA

Oshigongi shelaka lyOndonga no-shikwanyama kumwe, otashi gongala mOshitayi mOndonga eti 11-12/11 65 potundi ontimulongo.

Igongi mbika (Ndonga en Kwanyama Taalkomitee), otayi ka kundathana iitya yOshiwambo niitya yoshingolo, opo ku longithwe iitya ya uvathanwa nawa momambo gomiyalu nge taga ka holoka. Shika osha tseyithwa komuwiliki omukuluntu gwElongo lyaavalelwamo gwaVenduka.

OMBALANTU

Oshilongo shika sha li po oshidhigu. Osha yugu iimuna yopuushiinda momausiku. Oshilongo sha tokoka kiilongo itatu: Uukwambi, Ongandjera na Uukwaluudhi. Aambalantu ngashi ya yugu puushiinda, no-sho wo aashinda yawo ye ya kondjitha. Oya li po kaye nombili moshilongo.

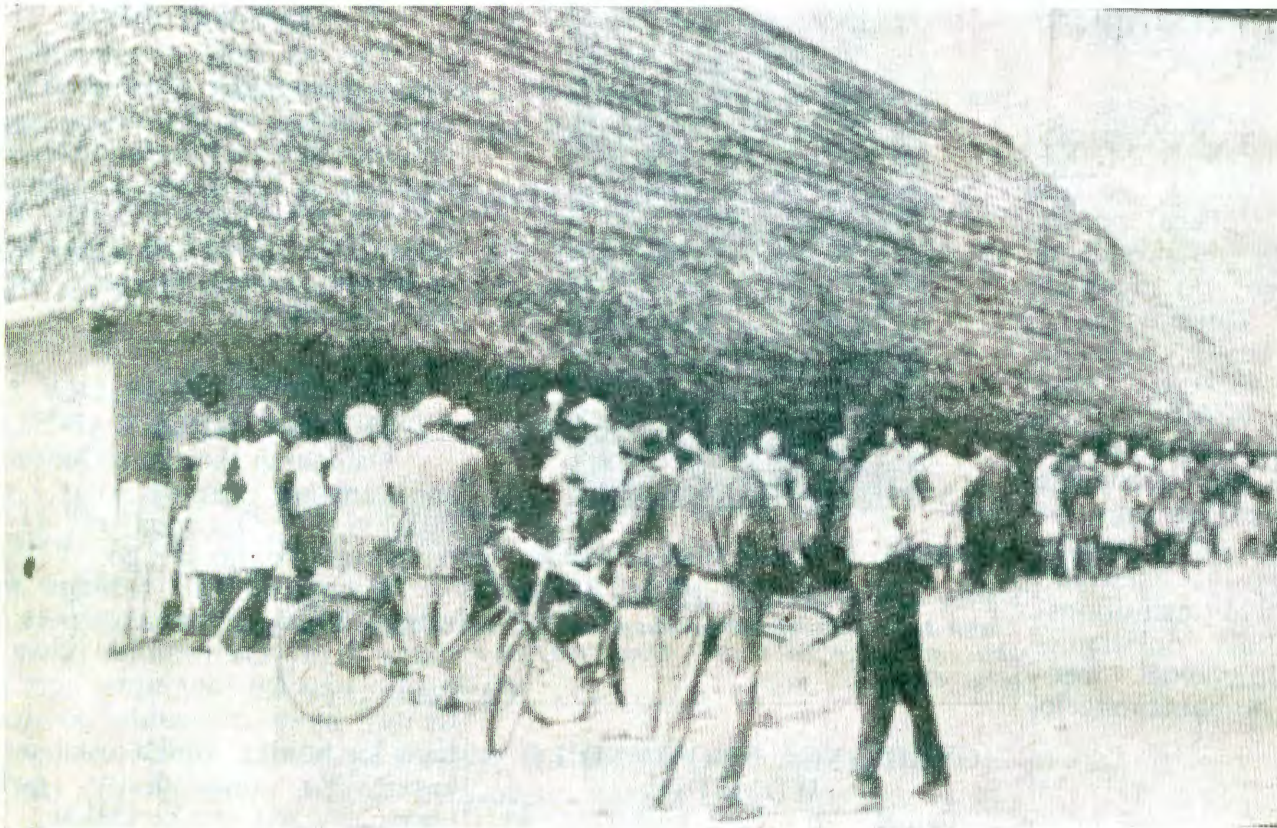
Aakuluntu nooyene yomikunda yamwe oya taamba nawa August, shokwe ya talela po noyi indile, ya pe-we wo omuhongi moshilongo shawo. Aluhe okwe ya tumine elaka, manga ine ya talela po. Ihe esiku limwe osh okwa yi ina tuma elaka, shokwa thiki popepi noshilando, Julia a li po wo na ye, okwa aluka, oshoka aantu oyendji ye ya okutsakaneka noodhimbo nomagonga nomatati gi ili nogi ili. August a kambadhala oku ya popitha: Opo mu li? Ihe inaa yamukula sha. Navulwa August a pula:

-Openi tatu vulu okukala uusiku?

-Omolwa shike inamu tuma elaka kutya, otamu ya, osho ya pula. Ihe ye ya ulikile ngaa eha mpoka ya wape okulala muusiku. Ongula aambalantu ye ya taamba nga noye ya popitha nawa, unene ya kumwa, sho ya mono efolo pamwe nomuhongi.

Komeho tapu tsikilwa

AALESHI TAA NYOLA



Aagundjuka oye-ndji yomomago-ngalo gOwambo-kavango oya li moshigongi shawo mOshitayi. Mpa-ka oye li ponger-ki yOshitayi.

OMPUMBWE OMOLWOMU-LONGI!

Otse iilyo yetonatonongelo naalongi kOmaalala, otatu kugu onkugo. Otwa pumbwa omulongi a pita moseminari, opo a pewe mpano ostanda I nosho tuu II momuvo 1966.

Otatu mu halele eyambeko enene mokulesha ombilive yetu.

Peha lyiilyo yoskola,
K. Gabriel, Omaalala.

S. H. Job, Okahandja, ota kundu aaleshi ngeyi: Oohapu dhOmuwa nadhi udhe mune dho nadhi kale onyeka yeni yokoopadhi. Okugalikana kumwe naku mu nangele kumwe. Endeni nondjila tamu yi uthilwa kOmuwa. Esiku ewanawa hambeleleni Omuwa nesiku ewinayi mu mu inekele.

Sakaria Nangolo, Box 198, Okahandja, ota ti: Aavali aaholike, inamu ethela we uunona uushonashona kUushimba, oshoka otawu hepekwa e tau mono iihuna unene moofalama. Ya tidhileni mooskola. Ota ti wo: Ne hamu umbu iinima yeni, nyoleni nawa omadhina geni. Iipakete yeni sho ya nyolwa nayi, onke tamu gandja iilonga kaalongi mokulesha iindanda iwinayi sigo omuntu te shi etha owala. Nyoleni oondanda dha halakana, opo nakulesha a tseye shoka wa nyola.

Vanyasha nye, kolekeni ehanganoni olo mwa tameka. Ounyuni aushe ou na omahanganoni manene ovanyasha.

S. F. Niigambo, Box 59, Windhoek, ota hokolola iiponga yomakandomo giihauto naantu taa lyatwa kiihauto nomashina ga gu kolutenda ga dhipaga aantu mOvenduka. Ota indile aaleshi yOmukwetu ayehe, ya galikanene aamati yomehalakano, unene aaVenduka.

U. P. Daniel, ota popi kombinga youhefi. Ota ti ngaha: Ouhefi otawu tu imbi okuya komesho. Itatu diinine nande osho twe shi likola. Otwa laipikwa mbela. Ohatu longeni oimaliwa, hatu i longeni noudjuu nenyeme, ndele nge hatu i longifa, ohatu lande oinima ihe na omupondo. Onye mwa hala emanguluko, mu shi okushinauna eliko moikunwa nomomapuko olo emanguluko? Efeni hano oinima aishe ii. Tu kaleni kumwe nokulongela kumwe. Tu tungeni oshilongo, osheshi osha heva.

J. A. Shililifa, ota londwele ovo ve hole okufinga: Ponhele yokwendelela u finge ile u popye eendjovo dikukutu komukweni ile komumwoye, mu tala tete onhendi. Pamwe ovanhu eshi tava kukuta, omolwomafingo? Kaleni ovananheni ngashi Ho yeni omunanheni.

David Shiimi na Tomas Kandongo, Nakayale, otaa indile aagundjuka yOwambo-kavango ya dhimbulukwe aluhe aapagani kOmindamba noku ya umbila ongalo yomagalikaneno noyoomakwatho galwe, taa ti: tu ya ningile wo ngaashi tse twa ningi lwa.

Matheus Tomas, Kombat, ota hokolola eso lya Gebhard David, a kandoma noshihauto she. Tomas ota londodha aahingi yihauto ayehe, ya kotoke, oshoka eso tali ya akele ethimbo inali tseyike.

AAGUNDJUKA TAYE KU ANDUKILE NGOMUME MEKOLO LYELUWA

Esiku eti 13 Okt. 1965, aagundjuka aaTilyasa, otwa ka talela po omugundjuka omukwetu Martta Paulus. Omugundjuka ngoka oye oshilema iha vulu nando okwenda. Otwa yi pamwe naawiliki yetu nomuyevangeliste E.Ijambo.

Tango twa imbi eimbilo. Omuyevangeliste a lesa oohapu dhi li mu Rom 8:25. Okwe tu lombwele shoka twa tegelela kombanda yeve, twa tegelela tu ka ye moshilongo sha Kalunga, ngele twa kondjo huka kevi. A kumagidha wo Martta, nkene e nokudhiginina sigo okusa nokutegelela Kalunga neidhidhimiko. Omugundjuka a kolekwa wo muukriste we.

Aagundjuka ye mu popitha noohapu dha Tate Kalunga. Otwa imbi omaimbilo notwa ningi ongalo ya zi R2.56 2/1c.

Aagundjuka ooyaakwetu, iilema oyindji yi li momikunda dhetu. Tayi pumbwa ekwatho lyoye. Tu longeleni Omuwa manga tu li po aagundjuka.

FINSE SENDINGDRUKKERY
OVAMBOLAND
ONIIPA