

OMUKWETU

No 12

JUNI

1965

INDENI NOUNYUNI AUSHE

Mat.23:18-20.

Efiku la huninwa la Jesus pame novahongwa vaye olo efiku letumo. Ovahongwa va halakana okudja mefiku va tililwa Omhepo Iyapuki nova ya keembinga neembinga dounyuni nokuwanifa oshipango sha Jesus. Petrus a kala muJerusalem nokomesho a ya kuRoma, oko a dipaelwa. Jakob a kala muJerusalem omo yo a fila efyo lomuhokololahonde. Tomas a ya kuIndia nokutandavelifa elaka eli: "Indeni". Filippus a udifa muSamaria, Johannes a ya kuAsia nokukala muEfeso, omo a hangika komatewatewo fiyo a ya konhunhu ya Patmos. Vakwao va halakana neembinga dounyuni nokutandavelifa evangeli noku va shasha.

Oshipango eshi "Indeni" itatu shi udu ashike petumo lovahongwa, ndele ohatu shi udu yo pOulalelo Uyapuki ngenge ovaenda vOulalelo tava lekelwa. Etumo olo eshito lipe tali shitulula onyuni. Melaka eli "indeni" omwa dja eenghono dikumwifa, eshi la teya po oilongo oyo ya li ya kola noi na eenghono, mwa li eehamba da pama unene. Ovo va li have litangele eenghono davo, na do yo oda shunduka.

MOukwanyama nale mwa imbwa kovananghono tava ti: "Medu letu omu kamu kofele shindele shapo otashi shingifa shi na ongoma yowalende". Elaka eli "indeni" ola hanga Owambo aische, nande kwa li taku tiwa itamu kofele oshindele. Oindele pafa ya mona omilele dayo moilongo ei aische. "Ame nda pewa eenghono adishe meulu nokombada yedu". "Dunamis" odo eenghono tadi longo mokuhamonika notadi teya po oilongo ya kola noya pama nokutaataa ovapangeli moilongo yavo.

Omuyapostoli Paulus ta ti: "Osheshi ondjovo yomushiyakano oya


nyikila oulai ovo tava kana, ndele kufye ava ovahupifwa oyo eenghono da Kalunga, 1Kor.2:18. Ovakwaita ova twakana Owambo nokuyelula eonga lomushila womupembe olo omushiyakano wa Jesus, ou wa nyikila oulai ovo tava ka kana.

Ondjovo oyo "indeni" oya difa nge omahwilili fimbo twa li efiku limwe twa fikama pombila yomutumwa umwe, i li mofuka molwashi inai monenwa onhele moshilongo. Onghe ya ka tulwa moihwa. Ombila oyo oi li pokati komihongo nomifyaati dile nomomwidi muhapu po kape na nande eumbo ile ewapalo lasha. Omutunda winya tau wanifa natango elaka eli "indeni". Ombila ei otai udifa fiyo onena mokati ketu nokuhepaulula edina lOmwene fiyo opapa. Omuhongi winya a fya pefimbo leenghono domilaulu tadi longo moshilongo shetu. Nande ongaha ovakwaita vakwao inava loloka okuyelula omushiyakano.

Ovakwaita ovakwetu, sha fimba sha pwa ko, osha nhandanga shi li ko. Ofye otwa pewa, "DUNAMIS" (eenghono) yokupangela noyo ku taata mo epangelo lomulaulu movanhu ovo ve li mepangelo loulunde fiyo onena. Etumo olo eshito lipe tali shitulula oilongo nomadu nomikunda nomaumbo nosho yo ovanhu. Ouyelele tau etwa keudifo levangeli.

Yelula omesho oye, u tale koilongo yovapani ya shama na ve, popepielela na ove ope na ovapaani vahapu tava dedauka noupaani wavo. Shama tu wa tale onunona nhubi tava kulu ve li momulaulu wokushiva sha, ofikola ihave i popi kovakulunhu vavo, ka ve na ko na sha na yo. Vandamena langhele muAngola u taa, ndele to mono ne omanghete.

Onghe hano omumwameme mu



Omushigakano wa Kristus ou nokuudifilwa mounyuni aushe. Oye omupangeli alushe. Onghee elaka keshe nedimo keshe nali hepaulule Jesus Kristus ye Omwene.

Kristus, Kalunga ote ku ifana u mu longele moshilongatumo, opo u alulile kuye oyomwenyo odo di li po natango inadi mu dimbuluka, tadi telae-nifwa komulaulu wounyuni ou.

Omboka ya taamba oohapu tuu dho Keuvitho lyeni lya thiki kuyo, Taa mono elago nehupitho wo, Taa pewa enyanyu lya kala muyo.

F. Shikomba.



Juni 1965

ESHINA LOKUTUMA EENDAKA DEVANGELI (RADIO VOICE OF THE GOSPEL)

Vahapu hava pula: Eendaka devangeli ohadi tumwa ngahelipi hano?

Moshilando Adis Abeba shi li mu Ethiopia, omo mu na eshina olo tali pangele makwao. Eshina eli oLongerki onghwaLuther. Ongerki onkwaLuther mu Ethiopia oya popilwa nawa kepangelo lamo okukala neshina olo.

Omo eendaka hadi tumwa. Eendaka ohadi tambulwa nee vali komashina omatambuli. Omatambulishina omu-Afrika oku li peenhele edi: 1) Christian Radio Studio, Uyo, East Nigeria; 2) Box 777, Moshi, Tanzania, Tanganyika; 3) Gospel Broadcasting Committee, Box 162, Lilongwe, Malawi na popepi na fye mu Suid Afrika omu Lutheran Production Studion, Box 59, Roodepoort, Transvaal. Eshina eli linene la Ethiopia oli li ponhele ei RVOG, Box 654, Addis Abeba. Efimbo leenghundana da Ethiopia oleli: 31 m., 7 p.m., 9, p. m.

Omashina aa ohaa undwile hano eendaka momakufikufi momhepo. Nge to popi ewi ihali hulu po, ohali i nomhepo. Omashina haa kwata yo eendaka odo tadi ende nomhepo ngashi oradio yoye hai shi ningi yo. Omulungu weshina ohau dulu okupungu'ulwa, opo eendaka di kuninwe oko da halelwa.

Oshilonga shokutuma eendaka devangeli osho: 1) okuhepaulula Kristus mounyuni. 2) Okuladipika eengerki 3) okupendapaleka omalongo noku a tungila konghedi youkrise 4) okulonga ovanhu moradio 5) okukwafa eengerki moshilonga shado sheudifo levangeli.

Pamaufu nopamikalo oto dulu okunyola eendjovo doye mombapila, ile oku di tula mongalo yokashina haka kwata omawi noku di tumina keenehele edi da tumbulwa, nena oto ke a uda moradio yoye. Omunhu ota dulu okunyolela keadresu odo di li moshinyolwa eshi nokupula elandulafano leetundi davo dokutuma eendaka, otave li ku tumine oshali.

L. M. Shemuvalula.



Moondjokana omu na uulunde wa fa ongwe tayi lyana. Owo uukwazimo wolutandu. Ngele u nomatopauko moondjokana dheni, kala ushi shi, otamu lika kongwe. Ongwe yimwe oyo aakweni, yimwe one yene sho mwa pikwa ku Satana. Oluvalo talu pukithwa wo.



Aamwoye we ya pewa oshipango: U ya galikanene, u ya tonatele, u ya putudhile meitaalo nomokutila Omuwa, ngu ya tseyithile omalongo guukriste.

UUTHIGA WOMOONDJOKANA

Omuwa Jesus ota ti: "Omushiti okwe ya shita petameko omulumentu nomukiintu." Mt. 19: 43.

Onda hala okupopya oshinima shuuthiga mongerki yetu Onkwaevangeli pa Luther yOmowambokavango. Otwa nyañyangidhilwa okambo okawanawa mOshiwambo "Epukululohombo." Embo ewanawa shili lya nyolwa koitaali aalumentu naakiintu yongerki yetu. Oshilalakanewa shawo osho ngaa uuthiga, nkene taye u longitha.

Omumentu e nokweetha po he na yina nokwiimangeleka komukiintu noyo ayehe otaa ningi onyama yimwe. Mt. 19: 5; 1 Mos. 18: 24-25.

Uuthiga womoondjokana owo omayambeko goluvalo, epya, iimuna neliko alihe. Ayihe mbika tayi holoka metungo lyegumbo, oshoka ayehe taa longele kumwe.

Omuyapostoli Paulus ota kumagidha aakriste ayehe: "Oshoka okuhokana ku vule okuhwama." 1 Kor.

7: 9, ota kondjele uuthiga womwe-nyo pwaa kale evundakano.

Otatu tala mbela ngiini oshinima shika oshinene shuuthiga ngele poaltari ohatu lombwelwa: "Sha tulwa kumwe ku Kalunga shaa kuthwe kumwe komuntu?"

Ope na oothigwa hadhi kala po. Ndishi gumwe gwaambaka ngele ta zi po iinima otayi ningi yoonakuthigwa po? Oshinima shika katu shi uvite ko nando, ihe miigwana iikwawo sha simana nando uukriste wawo ou li ngaa mpoka.

Oshike hatu kutha iinima yokomagumbo yi nooyene? Twa ndhindhilike tuu oshipango oshitimugoyi: "Ino haluka egumbo lyomukweni." Tala ko sho to haluka noto hanagula po egumbo niigandhi niiketha na ashiche sha kongwa komukweni pamwe nomukulukadhi gwe noyana. Owa li peni sho inoo gongela maandjoye? Omuntu gumwe kamwa li hamu endathana, u uve niityele a kalothika, ngoye oto u lyonkuma.

Akutu ne aakriste aakwetu! Okahalu keliko etindi lyuuwinayi! Tu itedhululeni moshinima shika shuuthiga. Tseni aanamagumbo, tu nyoleni manga tu nomwenyo kutya, oolye noolye taye tu thigulula. Omusi a tile.

Aakulukadhi olwindji taa tila aakwanezimo lyomusamane, taa gandja ayihe ye yi kongele pamwe. Ina shi kala ngaaka aamwameme.

Aakwetu, uuyuni wetu wOshiwambo tau halakanitha po oshigwana Oshinima shika she ehameke ndje omasiku ogendji no itandi vulu ndi kale inaandi shi mu nyolela opo tu kwathathaneni.

Abraham okwa galikana Kalunga, ongame itandi ka ya ndaa na nando omuthigululi gwandje.

Openi kwa nyolwa membo eyapuki uuthiga waakwanezimo? Shila oshitelele owala shuupagani noondjigilile dhookuku. Ihe Ombimbeli tayi ti: "Nale mwa li inaamu tseye Kalunga no mwa longele iikalunga iimbo." Gal. 4: 8-9.

Inatu hepekeni aaselekadhi noothigwa. Ndi shi hatu galikana aluhe mongerki: "Kalunga Ohe yoothigwa, popila aaselekadhi." Oyo tuu mboka tatu uhala na yo mompangu okupula eliko lyomumwameme nenge lyomutekulu nenge kuku gwandje.

Ando Kalunga e tu tonatithe tu mone no tu ndhindhilike iipewahenda ye, ando kape na nokuli ngo te eta oontamanana poosa. Kalunga ne tu punike. Ev. Stefanus Iteua.

ENONGELO LYAAYAKULI YOMAGONGALO

Kalunga na hambelelelwe omagano e ge tu pe sho tu na enongelo ndika tali tu yakula. Menongelo ndika omwa yakulwa nomwa putudhwa aayakuli yomagongalo yi ili noyi ili.

Enongelo lyetu nuumvo otali gwannitha omimvo omulongo na ntano. Olya yapulilwa oshilonga shalyo omumvo 1950 komukuluntutumwa Viktor Alho. Menongelo omwa putudhwa aavangeli taa longo mOwambo nokUushimba. Maaputudhwa omwa zi aayakuli aawanawa, taa yakula mOwambo naamati kUushimba.

Mwaa mboka ya putudhwa menongelo omwa zi aasitagongalo yatanoo taa litha omagongalo noyendji oye li moskola yuusita kOttjimbingwe nokuli. Enongelo olyo uuyamba wongerki, Omusitagongalo gumwe okwa ti: "shaa ngaa omuntu twe mu tumu kEngela, ota zi ko e lwetele mooha." Gumwe okwa ti: "Omuntu shaa twe mu tumu kEngela, ota zi ko ta ti, oshike ihatu ningi ontumba nongandi?" Ota kwatele iinima komeho. Iigongi ya kala mo oyindji nomapukululo taga yakula aalongi mepya lyOmuwa.

Ne tumbule mboka ya li ya yakula mEnongelo mpaka.

Aalongi: Manga inali tameka naa naa, omuhongi Byelee (Björklund) okwa longo aavangeli mpaka 1943 na 1946-47. Omuhongi Erkki a tameke Enongelo 1950. Mboka ya li ya yakula oyo, oofelani Rydman na Tenkama, Leonard Mikael, Laban Hamhata, kuku Kantele na Nakale kiinyolwa (Lindström), Kornelia Simon, Leo Hekandjo, Jason Amakutuwa, Omuhongi Pentikäinen, meme Laina Aho, Aili Muatotele, efolo Hynönen no nena ope na omuhongi omupe Simojoki. Omwa yakulwa wo kaasitagongalo yalwe mepya lya Kalunga inaa tumbulwa, oshoka inaa kala menongelo lyo lyene.

Enongelo lyetu oto li kwatha, ngele to umbu ongalo ndjoka ye li uthilwa kEpangelongerki. Ihe oto vulu wo okutuma omagano goye gu ukilila kEnongelo. Otatu pumbwa, iikwakulya, iimaliwa noombete. Enongelo olya koko li nomatungo 17. Metungo limwe omu na wo omala ogendji nando ku na gamwe ngela ngaa limwe. Unene ne mboka mwa yamu omahini mEnongelo, inamu li dhimbwa oku li galikanena noku li pa iikwatha.

Nuumvo otamu ka ningwa oshigongi shotango mu sho inashi kala mo



Mefano tamu monika ongulu yimwe mEngela moka aatumwa haa kala. PEnongelo ope na wo omilunga odhindji. Omushiti a utha dhi kaatumbwe kaalongwa yomEnongelo.

UVITHILENI AASHITWA AYEHE

Evi olyOmuwa no shaa shoka shu udhila mo, nooha dhuuyuni na mboka ya kala mo. Oshoka oye okwe li tungile kombanda yomafuta no kombanda yomilonga kwe li dhikile. Eps. 24:1-2.

Kwa kala ethimbo aakwiilongo ya kelelwa okuthika mevi lyAayapani. Ihe okamati kamwe, edhina lyako

nale, osho oshigongi shehangano lyaaidhiliki yiikolitha.

Gamena Enongelo,
Kwatha Enongelo.
Yambeka eyakulo
Humbat' eputudho,
OlyOwamb' Okavango
U li p' oshilongo.

Sha pama, shi li onkama
No tashi kankama.

Enongelo lyetu otali ka kola, ngele Omuwa ta tungu no te li langele nguuyamba wa ha.

Kalunga ne tu kwathe mpaka.
Jason Amakutuwa.

Nisima okwa adhika a toola embo lyomahokololo gomOmbimbeli nokwe li lesa meholamo. Ehokololo lyotango lyeshito olye mu kwata shili komwenyo, oshoka a dhiladhila, Kalunga ngele a shiti ndje, nena ngame ogwa Kalunga. Oye okwi iyaka mo moshilongo no kwi ihepeke shili sigo a thiki mu Amerika, moka a longwa okutseye Kalunga kashili. Sho kwa shuna kaandjawa, oye ina taamba iilonga ya simana e yi lombwelwa, ihe sigo kokusa kwe okwa longo oohapu dha Kalunga mokati koshigwana shaandjawa.

Omupsalmi wo ta tala, nkene Kalunga a shiti uuyuni no shaa shoka shi li mo, na ye oku uvite ngashika Nisima gwomu Yapani, iinima ayihe oya Kalunga, molwa shoka oye e yi shiti. Omupsalmi a kuminwa unene esimano ndyoka Kalunga e li pe omuntu mokati kiishitwa ye ayihe, Eps. 8: 4-7. Onke ano unene omuntu oye ogwa Kalunga no ku nokusimaneka wo Kalunga, Omushiti gwe.

Omukumo gu thike peni ku tseni okudhiladhila, ngame inandi za miuhwa, ihe nda shitwa ku Kalunga, onke na ngame omuntu gwa Kalunga. Oye okwa pa ndje omwenyo okuuwanawa we, inandi gu ilongela, nomolwa shoka ndi noku mu hambelela.

Taku tsikilwa

OSHIKOLOLO SHEGUMBO

KUKARAMWENYO KWANGE MOUKRISTE.

Ame mwene mwene nsigwe. Mokuhampuruka nge, makura onane tava dogoroka. Nye vanavamali navenye vapanani. Makura tava li yongo asi: Ilye ogu namu rera, tumu vumbilikileni nazina, morwa ku tupu ogu na mu rera.

Nye nina eharo lya Karunga kapi lina si panda. Ana tumine nge vazakuli owo tava vuru ku rera nge. Iwo nane Liisa Perälä na Naema Kalipa.

Eyi nina pahuka vareli vange vana tantere nge asi ni kare mwa Jesus ige muparuli gwange. Eyina zuvu nonkango odo nina va pura atji? Muparuli gwange ngapi? Nina mono elimbururo lya fana ngesi, ige ga ku parura ezuva eli onyoko vana mana ugenda wawo ezuva olyo vaku hampuruka. Nkare vaku vumbikilire kumwe nawo, nye Jesus ana ku parura.

Makura tava sansekere nge hena kombinga ze sanso lyange. Asi kwa sansera nge mosipangero ame tani vere unene. Moku zuva edi nadinye nina hamberere Karunga noku mu pandura eyi ana penge vazakuli wovawa, owo tava pisivire nge medina lya Karunga gomunamwenyo.

Ezuva limuve nina ka tarera po vanavamali. Moku kara kwange kwina nina kara sili noudigu. Morwa vanavamali navenye vapagani. Rorunzi vana pura nge atji! narunye totu tantere ukriste, ukriste nani kuna hara tupu oze kombingi, kapi to zi ko hena makura. Nye nampili ngesi Karunga ana mangurura nge moudigu ou nina tengura kovazakuli vange nehafo noku pandula Karunga eyi ana kandura po maudigu mudima.

Kuliharuka ezuva limwe pokatji komasiku vana mbuyukako asi nyame vana ya hala. Nina va bimbura era ka limwe tupu noku vapura asi! Apa ga fire nane amesi one kwa here mumbikilire nge ame nomwenyo inke hena muna ya hara? Ei nina kuru ipo muna hara nge? Kapi vana limburura nyuma awe, dogoro tava tengura tute zawo.

Vareli vange vana rongo nge ekanterero lya Hompa. Nina tameke sikora zovano, dogoro nina lirongo, dogoro standa zautatu imo nina twikire hena komeho.



*Nguka e li mefano oye meme
Anna Kaisa Sivanda.*

Ntantani eyi nina gwana nondunge nteni tani gazadara ku kara mwenyo kwange ko ipo tani dimburura asi Jesus ige sili muzakuli nomuparuli gwange gomuwa.

Mokutara eyi nayinye mwenyo gwange gu na zura ehambere nepanduro kupandura musita ogu gomunene.

Nye simwe selike tatu pili kufumadeka Karunga eyi ga tu pa Empogwe lyendi, ogu ga tu dikira Evangeli lyomwenyo. Na ntaantani nina dimburura asi nonkango da Karunga ido mutji gokomwenye kuverura mauvera nkenye gokomwenyo.

Tu mu fumadekeni ose natuvenye yeyi ige mu paruli gwetu.

Makundo gomanzi gomePsalmi 139: 1-6. (Anna- Kaisa Sivanda)

OMWENE TU KWAFWA OHATU NINGINE

Mat.14:25.

Otekisti ei otai tu lombwele nawa kutya, efiku limwe Omwene Jesus okwa ya mowato mefuta pamwe novahongwa vaye. Omo omwa li yo ovanhu vahapu. Omhepo idjuu oya penduka mefuta nde tai ninginifa owato koshi yefuta. Ovanhu ova li va tila unene. Ovo ove uya kOmwene Jesus tava ti: Omwene, tu kwafa, o-

hatu ningine. Omwene Jesus okwa hanyena omhepo noya lota pefimbo tuu opo.

Ovakwetu ovaholike, eongalo la Jesus kombada yedu olo otali ende mowato mefuta lounyuni. Omo omu na yo omhepo idjuu, oyo ya hala oku tu ninginifa alushe koshi yefuta. Omhepo ei kai shi omhepo oyo hatu mono alushe tai pepe tai di koushilo ya yuka kouninginino, ahowe. Oyo omhepo youdu yomikifi younyuni ou. Ovanhu vahapu tava kwatwa komikifi i lili noku lili. Vahapu tava ilikana alushe: Omwene tu kwafa u tu velule komikifi ei tai hepeke. Hano eshi itava mono ekwafo diva, nena tava hovele okunhuka mo mowato notave ke likongela ekwafo keewato dimwe di lili. Otava diladila apa, Omwene Jesus ina hala oku va kwafa. Onghe va hovela okulikongela ekwafo lavo vene keendudu doshipaani nosho tuu.

Ovakriste vahapu tava mono oudjuu uhapu meehombo davo. Ovashamane novakulukadi vahapu momaumbo avo kave na ombili. Alushe omu na eenhamanana. Vahapu tava hovele okwilikana alushe: Omwene tu kwafa u kufe po eenhamanana edi ove u tule mo ombili yoye meumbo letu. Hano vahapu eshi itava mono ekwafo diva, tava hovele okudja mo mowato. Omulumenhu ta hovele okushuna monima nota kongo ovakulukadi vamwe ve lili. Omukulukadi osho yo ta hovele okukonga ovalumenhu vamwe ve lili. Otava diladila, Jesus ina hala oku va kwafa meumbo lavo, ove wete a kala ko, ove wete Jesus ke udite ko eilikano lavo.

Ovakwetu ovaholike, eongalo la Jesus otali ende li li momafilu oiponga ihapu kombada yedu. Omwene Jesus oye omufita omukulunhu weongalo laye kombada yedu alishe. E li likongela nohonde yaye momushiyakano, ya tika kuGolgata. Oye iha kofa iha kumuka ngashi to diladila. (Eps.23:1-6). Oye oku ku wete, oku udite ko eilikano loye. Oye okwa hala oku ku kwafa moudjuu woye aushe. Oye ote uya kwove efiku olo ove ino li nongela. Hano eshi te uya, ta hange we likongela ekwafo loye mwene, te ku kwafa tu mbela? Omwene tu kwafa ohatu ningine. Abraham Jakob.

OSHIKOLOLO SHAAGUNDJUKA

NANI OTASHI VULIKA WO NO KAAKADHONA!

Olwotango shika sha ningwa mo-shitayingerki shOndonga. Aakuluntu-ngerki, no yoshitayingerki shika shOndonga oyu uvathana, pu ningwe ontanda yaagundjuka aakadhona. Oshu uthwa kutya, megongalo kehe namu ze aakadhona 10 no pamwe nomuwiliki gwawo 11. No sha ningwa. Omuwiliki gwoshigongi shaakadhona, omulongi J. Awene. Eti-7 Mai 1965, aagundjuka aakadhona yomoostanda III-IV oya gongalele montanda yawo ompe mOnguma. Onguma ogwo omukunda gu li pokati kOniipa nOnayena, popepi nomulonga ngoka gwe enda pOshigambo gu uuka lwokolukadhi.

Petameko opwa li omaopaleko goontanda. Oshituthi shoshene osha tamekwa nohungi ongulohi.

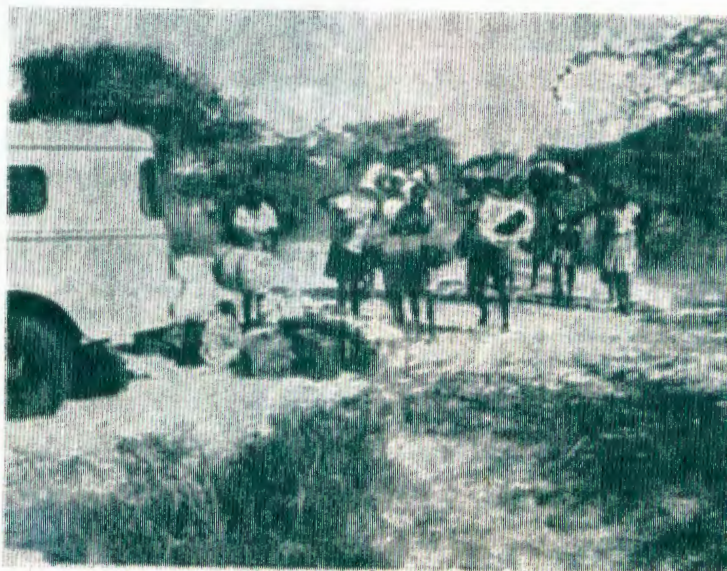
Eti-8 Mai metihamano, opwa ningwa tango etalo lyoontanda. Na kehe egongalo olya li li na ontanda yalyo. Ontanda yotango meopalo oyo ontanda yOniipa.

Omusitagongalo S.Mvula okwa ningi otundimbimbeli. Ekotadhiladhilo lyotundi olyo: "Omugundjuka oto oopaleke ngiini ondjila ye yi kale ya yela" Eps. 119:9. Meme Raija Salmi okwa kwata neshina lye ashihe sha ningwa kontanda.

Opwa ningwa ekwatho lyotango miiponga. Omulongipangi oku ulukile nkene shi nokuningwa. Aakadhona ye shi tala nomeho gawo yene.

Omadhewo gi ili no gi ili oga ningwa naagundjuka oya ndjanga komalutu nokokukala kwawo.

Kepulo ndi: "Otandi ka ninga omushike?" Omulongi, omupangi, omudiakonisa nomulongi gwoskola yosondaha. Oye eta po kehe gumwe ombinga yomoshilonga she. Konima omapulo gaagundjuka oga landula. Omukadhona gumwe okwa pula a ti: "Moskola yuudiakonisa ohamu longwa Ombimbeli ayike oomvula adhihe ne?" Omudiakonisa Hilma Nikodemus okwa fatulula nawa, nkene Ombimbeli ya topolwa miitopolwa. Kehe oshitopolwa osha pewa edhina. Moskola yamwe ohaa longwa omalaka gatatu: Oshiwambo, Oshiafrikaans nOshien-glisia. Oshitopolwa shimwe oshomupangi na uudiakonisa wowene.



Ontanda yaakadhona kOnguma sho ya halakana, aakadhona ya pakele ookofa no ya manga iinguma. Otaye yi eta poshigambo.

O, nkene aagundjuka ya hokwa okupulakena, oya ningi omapulo oge ndji koskola ndjoka. Elago olya li mpo, omuwiliki gwoskola yaadiakonisa meme Irja Repo omo a li.

Opwa ningwa omathigathano mokutseya Ombimbeli, mokwimba, mokulesha no mokumatuka. Aasindani oyo: Mokutseya Ombimbeli: Aaku 1, Aashitayi 2. Okwiimba: Aashitayi 1, Oshigambo 2. Okulesha: Oshigambo 1. Okumatuka: Aaniipa yaali ya sindana.

Otundi: "Oshipango oshitine." Omutonatelishitayingerki T. Shipanga a wilike otundi. Aadiakonisa ya ningi ohungi na omwevangeli gwaagundjuka A.Kalumbu a hulitha noohapu tadhi popi ematuko lyethigathano, okuhakana ondjambi yesindano.

Eti 9 Mai mosondaha, T.Shipanga a ningi otundimbimbeli. Omulongi A.Jakob a longo eimbilo: "Okomawawa omakwagulu". Omusita Armas Amukugo a ningi elongelokalunga. Pehulilo etopolo lyiinyanyuthi kaasindani. Aagundjuka aakadhona oya yi nenyanyu miipala yawo. Taa holola: "Eha ndika ewanawa okukala, ando tu gongalele po ishewe!" - Kalunga ite etha Owambo manga inayi penduka po.

EYONUKO INAALI DHIMBULULWA

Onda soluhodhi unene omolwoshinima ina tu shi dhimbulula: Otu li ngaa otse aakristelela no twi inekelwa. Ihe nani otse ngaa omaponga gomii-nima twe yi dhina nando oyo ngaa inaayi opala:

Aanamashina aakwetu, ou li meyonuko lyolwiho lwa satana. Otwa lilitha aakwetu oyendji. Unene ongele tatu hondjele aakwetu oohema noosketa niikwawo ya gwedha mbyoka. Inatu hondjela we yakwetu oompunda aniwa oohema. Onaku pa ndje nenge onaku ku pa oshiyata she, ohe eta ngaa sha gwana, ihe ohatu yi li po. Inatu lya po we iinima yaantu, oshoka moku shi ninga, nena otatu yono oohapu ndhika: Ino dhipaga omwenyo gwomukweni! Ino yaka po eliko lye. Dhimbulukwa, olwiho nokahalu owo uulunde nuulunde otatu vala eso, neso otali ninginitha sigo omuule wowene moheli. Mongerki mokugongala.

Omukwetu, inatu nyateka we nando ongerki. Onda mono nomeho. Aantu yamwe otaya hiyile omayeye mongerki, osho wo oshiponga. Mbela oshiponga ngiini? Omayeye ngele taga kukuta otaga ningi otsi. Meme ote ya nee nokanona komambo, ke na oshikwiila shako. Na ngele sha gwile pevi, otaka li owala, oshoka inaka tseya uuyogoki washa. Nena ombuto tayi yi mbalambala mokaana. Nena wa yono po okaana noombuto dhoye ndhoka. Dhimbulukwa wa hongolola, wa yono po uushona mbu wa Jesus.

Onawa ano iinima mbika iyali tu yi dhimbulukweni esiku kehe. Opo twaa yi longithe we. Otandi mu kundu aakwetu amuhe na ndhika:

"Ayihe tandi yi vulu mu nguka ta koleke ndje".

Sakaria K. Kappewasha,
Oseminari,
Onguediva.

OKAPANGLO OKAPE KOMUNDAUNGILO

Petameko lyomumvo nguka okapangelo okape ka tameke okuyakula aavu yokomundaungilo.

Okapangelo haka ke nomala gane, limwe lyomupangi, limwe lyokuvenda, limwe lyokukonakona aavu noku ya topelela omi na limwe lyaavali.

Omiyelo nomakende oga mbestelwa kUushimba. Iitaafula niipundi nooskopa noombete dha hongwa moshihongelo shokEngela. Omusitagongalo Andreas Kanhalelo okwa kala ta wilike okutunga kwokwene kwokapangelo haka.

Pethimbo ndika omupangi Viktoria Johannes oha longo ko nokuyakula aavu.

Omumvogu aantu ye thike pu 3831 oye ya mokapangelo, opo ya mone ekwatho omolwomauwehame gi ili no gi ili noyendji oya aluka ngaa. Oofuto dhawo dha li dhi thike pu R204-42.

Ondjila yokomundaungilo ondhigundhigu yi nefululu olindji. Nando ngaaka omi hadhi tumwa ko ngaa tadhi zi monandjokwe.

Ano, tashi vulika ngaa okunya-nyukilwa uupangi sho wa huma komeho kashona komundaungilo wo.

OU LILE PO TUU OSHIGWANA SHENI NO WA HALA OKU SHI KWATHA?

Eyamukulo otali ya mbalambala: Eeno, ondi shi lile po. Oto nyenge ndje ongoye ngoka wa pukululwa, to ningi iinima yi lyaathane kokule no-shigwana. Onda dhimbulula epuko limwe li li maapangi yomoshigwana shaandjetu. Itaa holola omikalo dhokulongwa nande. Otashi vulika omuntu gumwe e ya moshipangelo ngele omukulukadhi, ihe ote mu tuku owala noku mu ula omalaka gomatukano. Osho opala ngawo? Omuntu ngele e ya moshipangelo ta pula omuti, mu kwatha mbala ye a shune.

Ekwatho alihe tamu li kwathitha oshigwana sheni, otamu li yambeke-lwa ku Kalunga. Kaleni mu na omikalo ne mboka mwa pukululwa, opo mboka inaa mona epukululo, ye mu holele.

Otandi mu kundu aaleshi yOmukwetu amuhe. Kaleni wo netumbulo ndi: "Onda hala okukwatha oshigwana shetu".

Tomas Uulenga.



Mefano otu wetu omuhakuli Viktoria J. Shipunda. Okwa longo nale moshihakulilo sha Kongo, paife oye ta longo mokahakulilo komundaungilo mOukwanyama.



Okahakulilo komundaungilo osho hano ke li ngaho.

OU IHA LESHA OMUKWETU OTA YELEKWA NA SHIKE MBELA?

Oshifo shomukwetu osha nyolwa melaka lOshindonga, Oshikwanyama nosho yo luhapu mOshikavango. Osha nyolwa neendada da pashuka nawa nomupofi, tu tye ota lesa. Osha hambata alushe olupuna tau tungu omunhu komwenyo nokolutu. Ondado yasho kai fike nopondado yohema. Ovaleshi ve dule 6,000 ohave shi lesa nove shi udite ounyenye.

Ngenge omunhu i he shi lesa ile ine shi lilandela, ohatu mu yeke mbela na shike? Handi uya utaa! Okwa fa kakala ou iha lotoka ina dengwa. Okwa fa omunhu e kwetiwe komesho. Okwa fa omunhu e kwetiwe komatwi nokomayulu. Ota fi oshuunguungu. Okwa fa omuti wa fya olwaalambabi. Oye oku li moluvela. Ou yo ita futu eengunga doshifo shaye nande he shi lesa, okwa fa omunhu a djala omakende okomesho ine a pewa kundokotola.

Ou he shi lesa, ota nongopekwa, ta ndungikwa, ta li odidi a didilike nota tendelwa efiku nefiku keluwa longhena ya Kalunga. Omukwetu.

OUNYUNI OTAU TONGO SIIKE

EYAKULO LOMAYOO MU SUIDWES

Epangelo la Suidwes otali ka di-ka ayakulo lomayoo lipe. Ola ufwa mu yakulwe oonakuvela omayoo ovatilyane novalaule vomu Suidwes. Omukalo mukulu wovawambo ngashi okutaafina oilukusho, okukula po omayoo avali opedu nokuhonga ku lili noku lili, otaku ka konakonwa.

Omukulunhu weyakulo eli, prof. J.F. van der Sand de Villiers, okwa ti kutya, omayoo ovawambo okwa pama, ndele eshi tuu ovanhu va tameka okulongifa osuuka, oupyakadi owe uya.

EEMBWA TADI KA LONGIFWA YO NGASHI OVAPOLIFI MU S.W.A.

Onghedi yokulongifa eembwa ngashi ovapolifi mokukwata eembudi novakolokoshi otai konakonwa paife mu S.W.A. Omuhona omupolifi Lt.-kol. A.W. Brink, womofikola yokulonga oupolifi weembwa mu Kwaggapoort popepi na Pretoria, okwa hovela nale nokuli okukonakona oshinima eshi mu S.W.A. pamwe nombwapolifi yaye imwe.

EINEEKELO LINENE LOMUNDELE (KATOEN) MOKAVANGO

Koumbuwanhu-ushilo wOkavango oku na edu la wapalela omindele. Epangelo oli na eteelelo, ku ka kale oilonga yomindele ya denga pombada. Eshi osha popiwa komuhona M.F.Rose woilonga yomundele.

OMASHINI TAA TWALWA NODILA

Eenghundana da dja mu Maseru otadi ti: Epangelo leedila lovaingilisha, otali longifa eedila mbali mokutwala 1,000 lb. domashini oufila noumbishikiti koitukulwa Mashai na Semonkong muBasoetoland.

Eshi otashi ningwa, opo ku hupifwe eemwenyo dounona, Oitukulwa ei oya nyika omamanya neendudu noipalwifa ihai wana. Okwa hokololwa yo kutya, nale moitukulwa ei omwa monika ounona veedula 10 ve nouduu u fike po 35 lb. adike.

EFYO MOMINA

Eenghundana da dja ku Tokio, oshilando shomu Japan, otadi ti: Oiongifo inene yomina oya topa nai. Ovajapani 160 ova fya momina. Omina ei oi li pokanhunu Jamane pu Kioesjoe kombinga youmbangalanhu wa Japan noi na eefute 1,500 oule womedu.

Kwa hokololwa yo kutya, ovanhu 76 ova fitikininwa koikololo yomikala domina nelineekelo lokuhupa kali po. Ovanhu 552 ovo va hangwa koshi yedu eshi omina ya topa.



OITAUWA YOMOWAMBO OTAI LONGWA

Oshitauwa shipe (ongalama) sha dja kOndangua sha ya kOshikango, osha pwa. Paife epangelo tali longo oshitauwa shipe tashi taulula sha yuka moushilo fiyo manga omEnyana mOukwanyama.

ONGUNDU YAANASKOLA

Ongundu yaanaskola yomOnguediva oya talele po Oshinyanyangidho no ya fatululilwa komukuluntu gwo-shinyanyangidho omusamane A.Hartikainen, nkene omashina gi ili nogi ili haga nyanyangidha omambo ni'longa nkene hayi longwa. Oya li pamwe naalongi yawo yaali.

OVAAMERIKA OTAVA TUKA SHIKUMWIFA

Omwamerika umwe okwa tuka efimbo lominute 20 pombada younyuni. Okwa tuka neendelelo li fike peemaila 17,500 movili. Okwa tuka e lihupula kutya, ta file metuko olo ile pamwe ta hupu, walye. Oye omunhu omutivali oku shi ninga. Omwamerika Fdward White oye a tuka ngaha noshitukifodhila Gemini IV motundi 5.15. Vati aishe oya enda nawa.

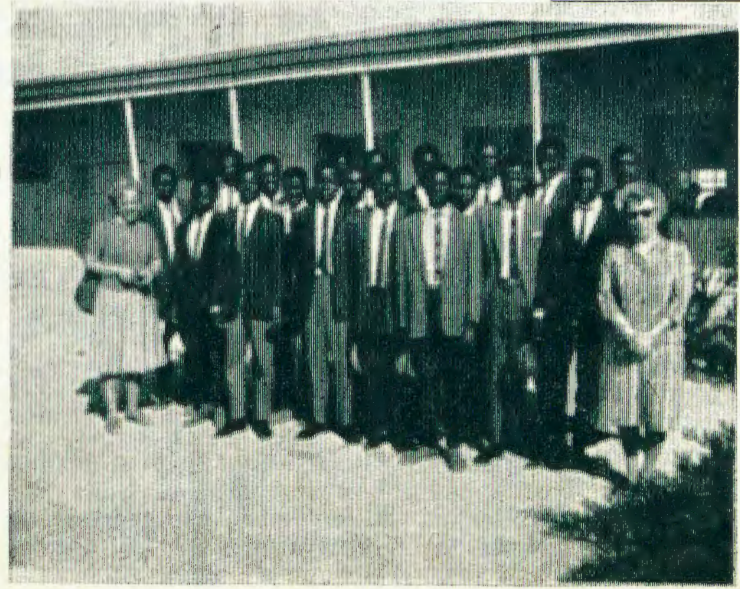
OMUKULUNHU A TALELA PO EESKOLA DOKOKULE

Omukuluntu hembadi welongo (Direkteur van Onderwys), omushamane J. T. van Wyk, okwa dja mOvenduka nde okwa talele po Owambo na Kaokoveld. Omushamane Van Wyk oye a kala yo omupopi omukulunhu eti 17 Juni moshivilo shomafiyafanepo oilongomwa (Ovambolanda Landbouskou) mOhanguena mOwambo.

Omushamane Van Wyk ota talele po yo eefikola mu Warmguelle, Sesfontein na Rocky Point.

SUIDWES OTALI KA MONA ESHINA LIPE LOKUTUMA EENDAKA

Epangelo la Suid Afrika ola ufa nokuli, ku landwe omashina avali okutuma eendaka. Keshe eshina (sender) li nokukala li na 100 kilowatt (kilowatt oshitya shoshindowishi tashi ti: eemaila, hano oule weenghono momakufikufi momhepo.) Omashina aa aeshe okwa diladiliwa Suidwes.



Mefano tu wete ongundu yaanaskola. Kolulyo ku nomulongi gwawo meme Anna-Liisa Lundmark no kolumoho meme Marta von Schantz.

AALESHI TAA NYOLA

Jakob Shiteni, Babelsberg, ota kundile po ovakriste na ovo vehe fi natango ovakriste. Ota ti: Omundilo wohole nau hwa-me. Tu ugulukweni koshikwatamundilo Kristus. Okwe tu pa yo tu leshe mu 1Petr. 5: 8-14.

Filippus Stefanus, Stampriet. ota popi oluhepo lwaauvithi lu li ku Stampriet. "Aayevangeliste oye tu pumba. Oku na uunona uuwambo owindji wa halakana noofalama wa hala eyakulo, ihe kape na omuyakuli. Otandi indile Epangelongerki li shi tseye", osho Stefanus a hokolola.

Lukas Johannes, Berg Aukas, Grootfontein, ota pandula oupenda nouidiinini wovamati vongerki yokatoli ve li mokomboni yavo. Alushe ohava indile noupenda ku Santa Maria wavo. Kave nomuyakuli wongerki yavo, ndete ove noupenda. Johannes ota ti, natu diinine yo eitavelo letu. Nge hatu i keendjovo dOmwe-ne, inatu endeni vali okadi kowishi. Okwe tu kunda na Fil. 3: 13-14.

Sakaria Gustaf, Windhoek, ota hokolola eso lyomugundjuka gumwe a si molwikolitha, eta ti: Aamwatate, tu ihomatekeni iikondjitho ya Tate Kalunga, opo tu sinde omauzigo ngoka taga nyateke no taga li oomwenyo dhetu.

Omusamane Andreas Imalwa, Uukwambi, okwe tu pe tu leshe Ehololo 3: 11-13. Ote tu londodha wo, tu ekelehi omitenge dhiiyagaya yuuyuni mbuka, tse tu humbate omutenge omupu gwa Kristus.

David Andreas, Aris Windhoek, ota pandula oshifo shOmukwetu sho hashi thiki nawa ku yo. Ota ti kutya, oyendji yomuyo ihaa mono aauvithi ihe ngele oshifo shOmukwetu she ya thiki, nena ohaa popithwa nawa koomwenyo. E tu pe tu leshe Iil. 2: 4 na 1Kor. 3: 13.

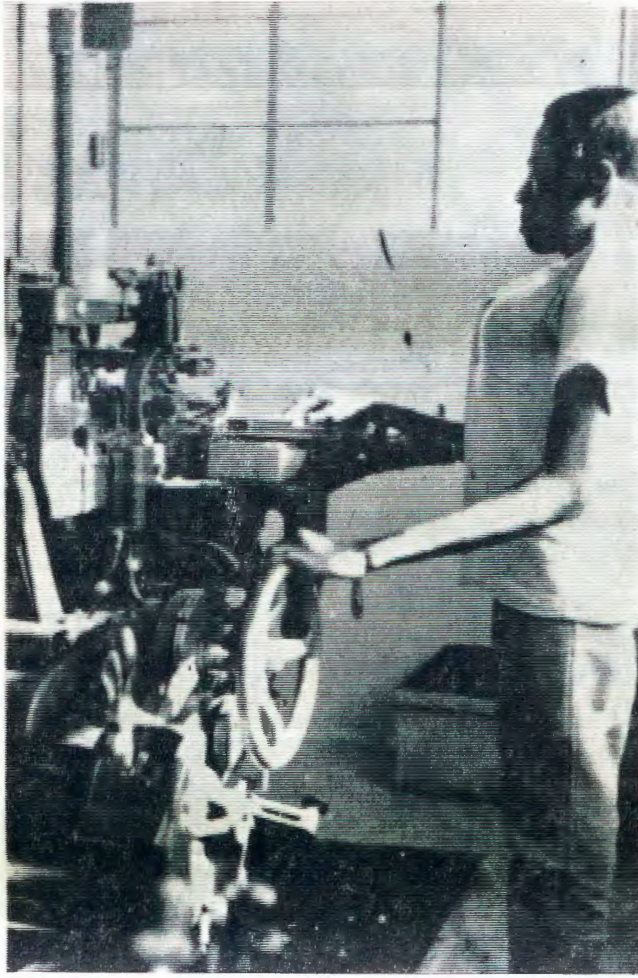
D. Tauja, Box 4, Ariamsvlei, ota kundifa neendjovo da Gal. 5: 13-26 nota halele aveshe epuniko lOmwe-ne ta ti: Limbungileni, onhapo oyoye mwene.

EMBO EWANAWA LYETUMO

Embo ewanawa, li noondanda nomafano ga pashuka nawa, edhina lyalyo "NUUYUNI AUHE", olya holoka ngashingeyi. Oto vulu oku li mbestela nokuli. Otali landwa 25c.

Embo ndika oli na omahokololo, omapukululo nomalongo omawanawa getumo. Otali kwatha mooskola, miigongi no miilonga yopakriste. Omahokololo galyo ga fa omagadhi goonyushi niitya ya dhenga nawa elaka, oga nyolwa kaanyoli oyendji. Olya gongelwa ku meme Laina Aho. Ilandela embo ndika u ze oompata.

Johannes P. Shijukifeni, Ondanga, ota pandula unene Kalunga. Oya ende noshihau-



Mefano eli otu wete Shikongeni Shayuka, e li peshina lokuteleka eendada moshinyanyangido Oniipa. Okwa longa oshilonga eshi sha fi-mana eedula nhano. Eshina laye hali teleke eendada di li po 1,200 motundi. Okwa hafela oshilonga shaye.



Aamati ne yomehalakano na kehe ngoka u na uunzapo weyumuko lyOmuwa Jesus, uvithilatheneni ano evangelii lyOmuwa. Mefano ndika Jesus ta tumu aalongwa ye ya ka uvithe evangelii. Oye e ku tumu wo.

to eti 2. 6. 65 nosha gu nayi. Ayehe ya gamenwa, kape na nando gumwe a mona oshiponga. E tu kundu wo neimbilo mEhangano 55.

N. N. Ipinge, Etilyasa, ota ti: Tu dhipageni uuhalu wetu, uudhini nuutangalali. Inatu dhina omaha mpoka hapa gongalelwa oohapu dhOmuwa. Tu dhimbulukweni wo, omalutu getu ogo otempeli yOmbepo ya Kalunga.

Epafra Sakeus, Box 82, Swakopmund, ota popitha ookuume ke ta ti: Inatu dhimbweni okuya kondombe yomeya omayebele. Ngele to nu omeya genono, ito kumwa. Nge to nu mondombe ndjoka Jesus oto kumwa.

Teodor P. Ekongo, p/a 13099, Windhoek, ota ti: Aamwameme ne mwa taambe-lwa muukriste, kaleni kumwe nokugalikane-nathana methimbo ndika lyomamakelo. Omuyapostoli Paulus okwe li popi nale 2 Tim. 3:1-9. Onke ina tu za mo moshigunda shOmuwa. Lesheni wo Rom. 14:13-23.

Ero David, Oranjemund, ota hokolola omumwayina a hupithwa moshiponga shoshihauto sha kandoma. Yamwe ya lemana nayi no te ya halele omagalikaneno gaale-shi, ya aluke ishewe nawa.

FINSE SENDINGDRUKKERY
OVAMBOLAND
ONIIPA