

OMUKWETU

No 11

JUNI

1965

ETILILO LYOMBEP ONDJAPUKI

Joh. 14: 15-21.

Jesus okwa ti kaalongwa ye. "Ngele mu hole ndje, otamu dhiginine iipango yandje." Ohole oyo oshiyimati oshinene mokukala komuntu. Ohole ohayi holoka mokudhiginina iipango ya Kalunga Ngele tu hole Kalunga, ohatu dhiginine iipango ye ohole sho tayi tu thiminike oku mu hola, onke okukala niipango ye itatu yi mono iidigu, oshoka otu mu hole.

Omukriste omukwetu, itala ngele ou hole Kalunga nenge ou hole lye. Ndi shi iipango ya Kalunga ou yi shi okuza koshipango shotango sigo oshitimulongo. Natango ou na iikalunga yoye mbika uuyamba, Luk. 12: 16-21. Oshikwawo okusimanekwa ngashi Iil. 12:21-23. Oshikwawo okwiinekela ngo ye mwene Luk. 18:9-14, noshikwawo, ela lyoye Filip.3:19.

Omuntu ngele ha tila oshikalunga nokwe shi inekela komeho ga Kalunga, oye ota nyengwa okuhola Kalunga. Omukwetu, ikoneka no u idhimbulule, ngele oho dhiginine iipango Ye. Eimbilo mEhangano 466:6. Aakriste inaa hala okuhola Kalunga, onke yu uvite iipango ya Kalunga iidhigu. Ngele tu hole Kalunga, iipango kayi shi iidhigu.

"Ongame no tandi indile tate, oye te mu pe omupopili gulwe a kale pu ne aluheluhe." Jesus ota tumine oonakumuhola omupopili, Joh.15:26; Joh. 16:7. Ooyakwetu, esiku lya Pentekoste sho lya thikana, oyo ayehe oya adhika ya gongala peha limwe, Iil.2:1. Oto pulwa wo numvo, ngele aakriste ayehe otwa gongala tu peha limwe pambepo opo tu peweni Ombepo ku Jesus.

Ombepo otayi pewa mboka ye mu itaala. Eitaalo olyo tali hili Ombepo ya Kalunga komuntu. Itaala u pewe Ombepo Ondjapuki ku Jesus. Joh.7:39.



Oyo ayehe noyu udhithwa Ombepo Ondjapuki no ya tameke okupopya omalaka galwe, Ombepo ngashi kwe ya pe oshipopiwa

Ombepo Ondjapuki ngele ya tililwa maantu, oyo otaa kala moshili, Ombepo oye te ya longo okukala moshili, Joh. 16:13. Ombepo Ondjapuki oku na okunambela mboka haa dhiginine iipango ya Jesus, Oye no te ya galikanene, Rom.8:26-27. omalikano ngoka ge li pahalo lya Kalunga. Oye oti ithanwa omukonakoni gwomwenyo. Ombepo ota mana omuntu uuwinayi auhe mboka tau etwa mo kaakaanakonashanakalunga, oye ta koleke aayuki, Eps.7:10. Oye ota dhimbulula omadhiladhilo gomuntu no ta dhimbulula wo omadhiladhilo gOmbepo note tu kwatha. Kalunga na hambelelwe sho tu na omugalikaneni, Ombepo yesilohenda noyegalikano, Sakaria 12: 10. Ano Ombepo oye e tu longo okudhiginina iipango mbyoka omuntu teyi lombwelwa ku Jesus, Mat. 28:20. Aalongwa ye okwe ya tala ya nika

oluhodhi. Jesus okwe ya lombwele, otaye ke mu mona ishewe, Joh.16:16.

Ooyakwetu, Ombepo Ondjapuki okwa tegelela omatokolo getu. Ombepo oye omukonakoni gwomagongalo getu, gwomutima niitiyanathigo, Ehol. 2: 23. Oye ta dhimbulula omadhiladhilo gomuntu no ta tseya omadhiladhilo gOmbepo note tu kwatha. Ngele tu hole Kalunga nOmwana, otatu pewa Ombepo Ondjapuki. Ooitaali ya Jesus, gongaleni mongulu yimwe, tu tegeleleni Ombepo Ondjapuki opo e tu longithe. E mu pe oonkondo okOmbepo ye, Efes. 3:16. E mu pe ombili nuupopepi na Jesus ov. 17. "Kamu shi shi one otempeli yOmbepo ya Kalunga". Ombepo ya Kalunga ngele okwa tililwa mu tse, nena otatu popithwa ku ye, Mat.10:19-20.

Naftali Amadhila.



OMUKUETU

Juni 1965

OULUNDE WOKATONGOTONGO

Momakanya ovanhu nomoinyolwa ihapu pefimbo eli, otamu udika oshitya "okatongotongo" ile "omatukauko" (apartheid). Ovabanhu ngenge tava popi oshitya eshi "okatongotongo", otava popi etondafano pokati komutilyane nomulaule. Moshinyolwa eshi itandi popi etondafano pokati koluvula litilyana na lilaula, ndele ohandi popi oshinima shi lili, yoolola nawa opo.

Ohandi popi oulunde wa fa onhoka youdiyo. Oulunde ou wokatongotongo owa hongwa mo elaka, wa kenya komayoo nde tau lyana ngashi onhoka paife mokati kovakriste. Otau lyana u li molupe tuu olo lokatongotongo. Konakona nawa oshinima osho. Oye omutondi satana ta lyana ngaha meongalo lOmwene pefimbo eli molupe tuu olo. Ngaha omutondi ta eta efyo nedundakano meongalo lOmwene mOwambo nopamwe pe lili. Okwa eta yo oupofi nedundakano moshiwana shetu. Omutondi a tula yo oudiyo ou pokati koiwana, otai litandula.

Pokati komufita weongalo novakwaneongalo ope noudiyo wokatongotongo. Itava shilile vali kumwe. Oyiimati yasho oyo: eengalo ihadi umbwa nawa, oilongaongalo itai longwa nehafo, okwongala peendjovo dOmwene okwa ninga okaulu komukwendje osho nosho. Ope nokatongotongo pokati kovanailonga i lili noi lili. Keshe umwe ota ulike mukwao mekofi. Ope nokatongotongo pokati komunyasha nomukulunhu nosho pokati komalenga novanyasha. Aveshe ove li kondjoko imwe, ndele itava shilile kumwe ile oshita. Oudiyo ou ou na ondubo. Kau hole oshili. Otau imbi omaudafano nomalongelokumwe nombili. Oyiimati yao tai monika paife akushe mufye. Vamwe va fa tave limbabala monhulo ngomufarisai nova fa tava ulike kwavo inava dja ko tava ti: Inandi fa omuteeloni oo.

Oilonga iwa otai ningwa idjuu koulunde ou. Ovaitaveli noonakulonga mepya lOmwene otava djuupalelwa. Moshiwana ashishe kamu na ediladilo limwe netokolo limwe. Ndelelene ou ta holeke oulunde ou wokatongotongo muye, te shi ningi neendjovo

TILA KALUNGA, NGU DHIGININE IIPANGO YE

Oohapu dha hugunina odho ndhoka twe dhi pulakene: "Tila Kalunga ngu tsakanithe iipango ye, oshoka aantu ayehe oye na oku yi tsakanitha." Omuvithi 12:13.

Omuwa Jesus sho a londo, okwa thigile aalongwa ye oshipango: "Ka uvitheni evangeli." Oshipango shika oshinene nosha kwatelela mo iipango ayihe. Oshoka nkoka ku nevangeli, oko nkoka iipango tayi dhigininwa. Na nkoka evangeli inal! thika ko, oko nkoka ku na omuzizimba gweso. Ongoka a longwa ye ita longwo wo mboka yaa shi sha, ota ka mona ondjambi yaahethi noyo oyi li moheli.

Aalongwa ya Jesus oye shi tseyana, onke ya dhiginine shili oshipango shika. Popepi no kokule oya uvitha, Kristus okwa yumuka kuusi. Ihe oshilonga shika oshe ya tonditha kaana yuuyuni mbuka. Ayehe mboka ya gwanitha oshipango shika noya kondjo sigo opeso, oya mono ondjambi yesindano megulu. Oya zalekwa iishani yesindano komitise dhawo. Ngashi aalongwa ya Jesus ya sile mekondjo ndika noya zalekwa omagala giyela komitise niishani yiingoli poontulo dhawo.

Oshipango shika osha lombwelwa, wo omukriste kehe pethimbo ndika. Onde shi uva. Na ngoye owe shi uva Owa tameke tuu okuuvitha evangeli? Aana yuuyuni mbuka oye ku hole, nenge oye ku tonde? Ngele oye ku hole, oshipango shika ino shi gwanitha. Oshoka omanyolo otaga ti: "Oomboka haa uvitha Kristus a yumuka kuusi, ohaa tondwa kaana yuuyuni mbuka." "Ohapu yomushigakano oya ni-

da fa dohole note liningi a fa e he u kwete, woo vene otau ndwafuka mo ashike. Unene nge a handuka, iha fe nokuli a shashelwe.

Tu kufeni eeholo mOmbibeli, tu lwifeni nado oulunde wokatongotongo mokati ketu. Tu u twiminineni omwifineeholo. Ofye ovanhu vamwe. Twa shitwa ku Kalunga umwe. Otwa kulilwa nefyo limwe notwa nyumukilwa ku umwe Jesus Kristus. Otu na omukumo ou: Jesus oye a finda etindi loulunde ou yo, ote tu findile yo. Eongalo laye nomoshinima eshi otali ka findana. Otali ka kala alushe kumwe, osheshi kali na apa tali ka findwa komivelo doheli.

L. M. Shemuvalula.

kila uugoya oomboka taa ka kana." Ngele u na natango ukuume naana yuuyuni mbuka kala u shi shi, owa tonda Kalunga no iho vulika kiipango ye. Oshoka omanyolo otaga tu lombwelle: "Kamu shi shi nani uukume wuyuni mbuka owo okutonda Kalunga?"

Ongoka ita dhiginine iipango ya Kalunga, oye okwa tonda Kalunga no sho ngoka ita uvitha: "Kristus okwa yumuka." Ngoye owa uvitha tuu eso neyumuko lye? Owa uvithile peni nowa uvithile lye? Ongoka ta holeke oshitalenti shoka e shi pewa kOmuwa, Omuwa ote mu holeke wo oshipala she esiku lya hugunina.

Owa tokola okuuvithila aapagani naakulupe evangeli sigo okusa koye, opo u ka mone ondjambi yesindano, nenge owa hala okukala kuume kuyuni, ondjambi yoye yi kale eso lyaluhe moheli? Owa sohoni okuuvitha? Oshike ino ithitika komakutsi esiku wa uva oshipango shika? Andola ihwepo. Ihe ngele ito tameke ngashingeyi, kala u shi shi, kapu na we ethimbo, shoka ehulilo lyoondjenda dhoye ku li shi una tali ya. Oshoka pulakena omanyolo: "Tala ethimbo lyo opala ongashingeyi, 2Kor. 6:2. Onkee ilongekidha waa pe omamanya ompito yoku ku pa uusama. Uusiku wa ti koongulasha nomutenya gu li popepi. Tu ihuleni ano uuwinayi auhe, tse tu homateni omahwahwa guyelele."

Kalunga ne tu kwathe, opo tu tameke pethimbo lyo opala. Ne tu pe ehalo lya yela, opo tu mu faalele oomwenyo dhooyakwetu siku tatu zimbulwa metsali ndika.

Otandi mu kundu neimbilo mEhangano 75. Unene nda hala mu ipule noverse yotango ne mu konakone ndjoka ya hugunina.

Elia Shilumbu.



Momushigakano gwa Jesus uulunde kehe owa sindika. Eyo-ka ekulu, satana, olya sindwa neso lya Kristus. Ngoka te li inekele, okwi inekela elimalima.

AAYEVANGELISTE OYA LI ISHEWE MELEVA

Aayevangeliste mboka ya pita omumvo 1961 oya kuutumba ishewe kiipundi yoskola, ometsikilo menongeloyakuli mEngela eti- 9. 3.-6. 5. 65. Oyedji yomongundu ndjika(41,)ya pita nale oya gongala ko.

Nuuladhi unene aasamane ya landula iipopuwa ethimbo alihe. Oopena, iifo, oombimbeli nomambo gomaimbilo ga kulupila miikaha yawo sho ya longithwa a'uhe. Osho wo oombulukweya dha kulupa netanga wo lya kulupa, sho ya dhana na lyo.

Ihe enota lyelongo, omapulo nuuladhi inau pwa po. Mongundu mwa li mu na enyanyu okwilonga, ihe enyanyu nehwamo lyokulonga lya li po wo. Oya lalakanene oshilonga tuu shika shimwe, enyanyu limwe, oshimpwiyu shimwe nOmuwa gumwe. Neitaalo lyoku mu itaala, otaku ningi ongundu ya tya ngaaka yi ili noyi ili ongegumbo limwe, moka iiningwanima ayihe tayi topolelwathana, tamu galikannenwathana, tamu tsaathanwa omukumo na moka ongundu ndjoka tayi pewa omukumo.

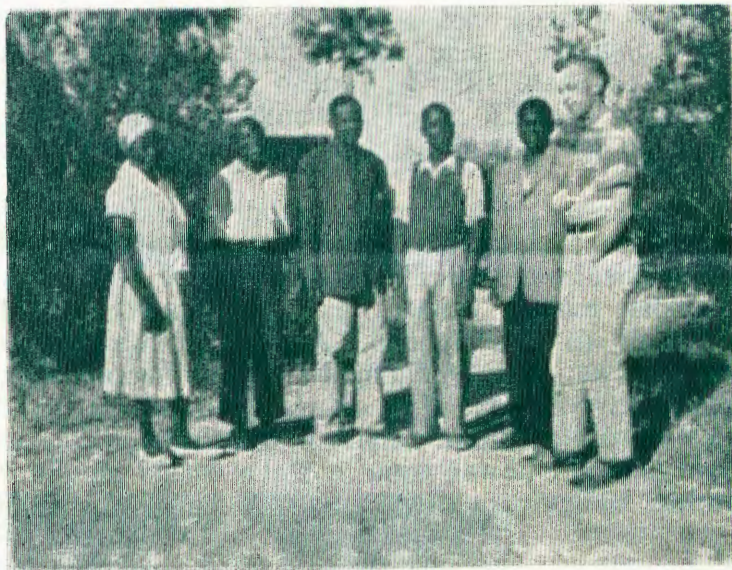
Aalongi yongundu ndjika oya li: omusitagongalo Jason Amakutuwa, meme Laina Kivela, omulongi Aili Muatotele nomukuluntu gwenongelo Vaino Simojoki, meme Aila Simojoki, omusitagongalo Natanael Shinana na meme Lea Juutilainen. Ishewe otwa mono aayenda mboka ya talele po ongundu yetu, ngashi omumbisofi Leonard Auala, omukuluntutumwa Arvo Eirola, omusitagongalo Simson Ndatipo nooyamwe aakriste yepipi lyaakulupe: Simson Shituwa, Vilho Kaulinge, Paulus Nailenge, Andreas Shapota na Abraham Nepembe. Mbaka oye tu topolele uyamba mboka ye u mono mokukalamwenyo kwawo okule. Oya tsa aamwayina aagundjuka omukumo nomakumagidho.

Ehalelo lyetu tse aalongi olyo ndika, ongundu ndjoka yaayevangeliste yi shune kiilonga ya talalekwa nawa koomwenyo noyu udha uuladhi. Oongaku dhawo dhi kale eigandjo kevangeli lyombili nokomeho gawo omapya giilonga, oshoka otaku tiwa: Na thingwe ngoka ta longo oshilonga shOmuwa nuunye. Omapya oga tiligana, oshilonga sha Kalunga oshi neulumo, oomwenyo omayuvi tadhi kana kadhi na Omuku'ili. Omuwa Jesus na zaleke aalongi ye noonkondo dhomegulu.

IIGONGI MENONGELO LYAAYAKULIGONGALO MENGELA

Okwa dhiladhilwa, mEnongelo lyayakuligongalo mEngela mu ka ningwe nuumvo iigongi, Kalunga ngele e shi hala. Iigongi nomasiku gayo otaga landula mpaka:

1. Ongundu yaayevangeliste taa longo miipangelo 15.6-20.7.
2. Ongundu yoohamushanga moombelewa dhomagongalo 15-28.5.
3. Ongundu ya hala epitikilo lyokuuvitha 29.6-3.7.
4. Ongundu yaakulukadhi yaayevangeliste aagundjuka 21-31.7.
5. Aadiakonissalongwa taa galukile koskola yawo 1.8.
6. Ontanda yoomeme yomagumbo 16-28.8.
7. Oshigongi shaakriste ayehe noshituthi shetumo mUukwanyama 3-5.9.
8. Ongundu yaakulukadhi yaayevangeliste ya kulupa 7-17.9.
9. Pamwe iigongi iyali natango yOmbimbeli:
shimwe shaakadhona (aakiintu)
noshikwawo shaamati (aalumentu).



Moshigongi shaayevangeliste ImEngela mwa li aayevangeliste yomoshitayingerki kehe. Mefano ndika otatu mono yamwe yomuyo pamwe naalongi yaali, oyo okuza kolumoho: Omulongi meme Aili Muatotele, Frans Kankondi, Uutsathima, Okahao kUuninginino, Paulus Hamukuaja, Engela, Oukwanyama, Martin Shambo, Okaku, Ondonga, Voitto Lyvera mu Runtu kOkavango nomukuluntu gwenongelo, omusit. Vaino Simojoki.

TU KWAFENI MU HE SHI NINGE!

Omu mEngela ohamu ningwa oivilo inene noyoongele inene ya fimana yopangerki. Ohai ifana ovakwanyama aveshe vongerki yetu ile nokuli ovakriste vongerki aishe yOwambokavango.

Moivilo ei ohatu mono unene oudjuu omolwovalandifi ovo inava hala okuudafana na fye. Ovalandifi ohave uya okushingifa moivilo, nokuli pefimbo ovanhu va onghala moshivilo pependjovo da Kalunga edi va ifanenwa. Ovalandifi ohava kufa po ongudu inene yovanhu hava ka ongalela okutala oilandifomwa yavo.

Eendado edi ohadi nyono po ashishe, osheshi oshivilo shopangerki ohashi shituka oshivilo shopanyuni. Omutenya otaku landifwa oikutu, nde nge tali toko, oikolwifa tai piti nokuli noihuna otai longwa ne moshivilo.

Hano nge tamu udu kEngela ku noshivilo, ava hamu shingifa inamu uya nande nande mu shingife moivilo yetu, osheshi eshingifo lomoivilo ohali etelele shihapu. Itatu itavele nande oshinima shimwe tashi landifwa apa omolwoshivilo, osheshi efimbo loivilo ei halo efimbo lomalandifo. Onghe hano, tu kwafeni mu he shi ninge, mu he uye noukolokolo veni, osheshi oikafa ihapu ohai eta eena.

Moshinima eshi ngenge itatu udafaneni, fye ohatu pula vali ekwafelo kovapangeli ve tu kwafele. Inatu hala ava tamu ke shi ningila owina mu kale mu he shi shi, opo mu ha ka hangwe ombadilila kounona vakweni poinima yeni.

Oshiwana sha putuka, ohashi monika momaudafano asho, ndele eshi inashi putuka, omokuhaudafana kwasho.

N. H. Shinana.
Engela.

OSHIKOLOLO SHEGUMBO

ETHIGATHANO LYOMAGONGALO 1964.

Moshifo sha tetekele otwa dhimbulula nkene omagongalo ga gongele oongalo dhi vule dhomumvo 1963. Eindjipalo lyegwedhelo olya li li thike R7. 90 kethele lyaakwanegongalo mongerki ayihe.

Ngiika oyendji mwa mono ombapila yomubisofi na amushanga ndjoka ya thindikile ostatistik yefatululo lyegongelo nelongitho lyiiniwe yomagongalo momumvo 1964. Mombapila ndjoka omiyalu dhomagongalo goshisayingerki shokOkavango inadhi holokela mo, oshoka odha tokelwa. Ashihe shoka sha li sha gongelwa momagongalo kumwe nekwatho ndyoka lya gandjwa kEhanganotumo lya Soomi, osha li ngeyi:

| Aakwanegongalo ya gandja | Ekwatho lyetumo | Kumwe |
|---------------------------------|-----------------|-----------|
| 1. Ondonga:R14074. 10 | R2687. 90 | R16762.00 |
| 2. Uuninginino:R10162. 77 | R2788. 23 | R12951.00 |
| 3. Uukwanyama:.....R 9705. 48 | R5089. 52 | R14795.00 |
| 4. OkavangoR_____ | R 414. 00 | R 414.00 |
| Kumwe R33942. 35 | R10967.61 | R44922.00 |

Mpaka otamu dhimbulula omagongalo gomOndonga oga gongele oshindji ge vule omakwawo, gomUuninginino ogo omatiyali mokugongela oshindji manga gomUukwanyama ga gongele oshishonashona. Omolwasho omagongalo gomUukwanyama ge nongunga onene ngashi tamu shi dhimbulula mpaka kutya, oga pewa konyala etata alihe lyekwatho lya topolwa. Nokuli otwa dhimbulula omagongalo ogendji gomUukwanyama taga nyengwa okufuta aayakuli yago, nota ga ka kala muudhigu ngele osho taga tsikile ngeyi nokwaa nuupenda.

Sho twa konakona omukalo gwokugandja iigandjwa momagongalo, otwa dhimbulula aakwanegongalo oyendji itaa gandja nando iigandjwa yawo. Otapu tengenekwa, oshititatu shaakwanegongalo mongerki yetu osho ashike tashi gandja iigandjwa yasho manga iititatu iyali tayi mwena ashike. Omolwasho omagongalo ogendji ge li moluhepo. Ando omukwanegongalo kehe a gandje shoka e shi uthilwa, ando omagongalo kage noluhepo nando. Mokati komagongalo agehe gongerki yetu (38), omagongalo 14 ga gandja kombanda yoopresenda 50. (Moshitayi shUuningino 6, Moshitayingerki shomOndonga 5, nomoshitayingerki shUukwanyama 3, shika otashi gandja kashona.) Mpaka otapu landula omiyalu pathigathano lyokugandja kwomagongalo miitayingerki:

| Uuninginino: | Onangalo | 71 o/o aakwanegongalo ya gandja, |
|--------------|-------------------|----------------------------------|
| | Elim nOgongo | 70 " " " |
| | Niimwandi | 63 " " " |
| | Okahao | 56 " " " |
| | Onaanda | 53 " " " |
| Ondonga: | Olukonda | 58 " " " |
| | Onyaanya | 57 " " " |
| | Oshigambo nOniipa | 54 o/o " " " |
| | Ontananga | 52 " " " |
| Uukwanyama: | Olupandu | 77 " " " |
| | Edundja | 60 " " " |
| | Ohalushu | 52 " " " |

Ondi nokutumbula omagongalo gaali omagundjuka ga sindana moku-gandja oshindji, ihe otandi shi tumbula nenyanyu, ogo: OLUPANDU, moshitayingerki shUukwanyama, oyo lyotango. ONANGALO, moshitayingerki sUuninginino, oyo etiyali. Omagongalo ngaka gaali naga ninge oshiholelwa shomagongalo omakwawo. Otatu ka tala wo numvo egongalo olini tali ka thiga po omakwawo mokugandja iigandjwa. Kalunga na yambeke omagongalo agehe gomongerki yetu nevangeli lyehupitho. Opo oomwenyo dhetu dhi gandje nenyanyu iipewahenda yopaKalunga.

M. Ngipandulua.



Uuyogoki wokolutu pamwe na mbuka woko-mwenyo otagu ningitha egumbo li nelago.

EINDJIPALO LYAANTU NUULUNDE WAWO.

Mombimbeli otatu lesa mo: Aantu sho ya indjipala, uulunde wawo owa vuka, Noa awike kwa li omuyuuki, 1Mos. 6: 12. Nge tatu dhiladhila nokutala eindjipalo lyaantu yongashingeyi na ndiyaka lyopethimbo lya Noa nando katu shi omwalu gwawo, otu na okutya, eindjipalo ndika enene.

Dhiladhila nduno iihuna yuulunde tayi longwa ngashingeyi. Ngele to pulakene no to tala shoka tashi longwa kaantu oyendji pethimbo ndika, oto kumwa. Oomwenyo dhaayuuki oyendji otadhi lili ngashi Noa a li ta lili. Waluwe omahodhi ga Kalunga nOmwana oge thike peni. Pamwe omukwetu oto dhiladhila nokutya, tse aahwepo nga ina tu fa mbeyaka ya yonwa po keyelu, tse opo tu li natango. Eeno, eeno opo tu li. Omolwashike tu li po na nena? Tala mu Lukas 13: 6-9. Nani omolwepopilo lyomusaseri omukuluntu Jesus Kristus.

Ndele. omukwetu, ndhindhilika, tu tilithwe ketumbulo ndika: Ngele itagu imi, nena gu ka po. Omutetekeli gwOmuwa Johannes ota ti: Ekuya olya tulwa pomakota gomiti. Shaa omuti ita gu imi iiyimati iwanawa, otagu kewa notagu umbilwa momulilo, Mat. 3: 10.

Epulo nda hala oku ku pula nandi ipule wo: Oto indjipalitha shike mokukalamwenyo, uuwinyi nenge uwanawa?

Petrus Kanime,
Elim.

OSHIKOLOLO SHAAGUNDJUKA

MATSA MBANO OYAAPENI?

Onda pelwe omumvogali kEpangelongerki, ndi konge aantu mbaka nde le onda nyengwa tuu. Pamwe oye li palwe natango inaa fala uukalata wawo komagongalo gaandjawa. Onawa ngoka we ya tseya nenge ongoye mwene u tseyithile ndje mpoka te tumu ombapila yoye yegongalo ya zi komuhongi omundowishi kOutjo.

Edhina lyamuhongi R. Vollmer.

Omadhina gaantu mboka ogo ngaka:-

1) Johannes (Angala) David, aakuluntu ye David na Vihtorina, a vaelwa pehala Aron-Ongandjera, a shashwa eti 9 Juni 1963 kOutjo.

2) Erkki (Hidishange) Nghinyenwa, aakuluntu Nghidishange na Mukwanambwa, a vaelwa peha Nghilonga, a shashwa 9 Juni 1961 kOutjo.

3) Filippus (Ampolo) Hsimi, aakuluntu ye Hsimi na Jakobine, a vaelwa mOntanga, a shashwa eti 28 Juli 1963 mofalama kOutjo.

4) Filemon (Leopold) Ekaku, aakuluntu ye Ekaku na Indo, a vaelwa peha Oshinga, elenga Nangombe, a shashwa eti 15 September 1963 kOutjo.

5) Stefanus Nangoro, aakuluntu ye Elias na Katrina Nangoro, a vaelwa (kopalsta onti-3)

OVAKONGINDJILA VOMOWA-MBOKAVANGO.

Omu li tuu nawa amushe? Omwa kola nga?

Omwa dimbulukwa mbela natango eshi twa ongala kongudu yovakongindjila konhanda yokuPundi ile yokuKunene? Ove ou udite ngahelipi, ohatu shi twikile komesho ile na shi kale?

Otu na ediladilo kutya, hatu ka ongala kuPundi. Ovamati novamatyonaongalo tava ongala momafiku 5-9 a Julie 1965. Opo momafiku oo tu kundafane nokudiladila vali efimbo lokonima, ndele unene efimbo lokomesho kutya, ohatu ka ninga shike mondjila yetweni. Ohatu ka tota ehanganolovene loukongindjila nokuhoolola ovakulunhu vehangano ile hatu ka ninga ngahelipi? Oinima i li ngaha ohatu ke i kundafana momafiku oo.

Hano, nenge ove wa pita ekonakono loukongindjila, ngee pefimbo lomuwiki tate Eero Hatakka, ile meenhandado twe di ningila kuPundi ile kuKunene, ila ne noinima yoye yokonhandanngashi shito, opo tu monafane nokundafana oshinima shetweni shiwa noshinene.

Natu kaleni twe lilongekida alushe!
Wa kundwa kuMbeletanga
Pauli Laukkanen.

lwa peha Ombarantu, a shashwa eti 14 Oktober 1963 pofalama Toevlug kOutjo.

6) Thomas (Hitondokwa) Hitamaro, aakuluntu ye Hitamaro na Nousiko, a vaelwa peha Ondangua, a shashwa eti 14 Oktober 1963 pofalama Toevlug, Outjo.

7) Paulus (Shimbike) Shilumbu, aakuluntu ye Shilumbu na Tukunavi, a vaelwa peha Otjepepe, a shashwa eti 3 November 1963 pofalama Beulah, Outjo.

Ngu wa tseya aantu mbaka, tumina ndje elaka kutya, nima oku li pontumba pongandi no gwokukala pegongalo lyongandi. Otandi indile wo, aalongi miinyanga mu konge omadhina momambo gegongalo ne mu tumine ndje elaka.

Tangi sho tamu yakula mpaka!
Jason Amakutuwa,
Ongandjera, Oshiteyi.

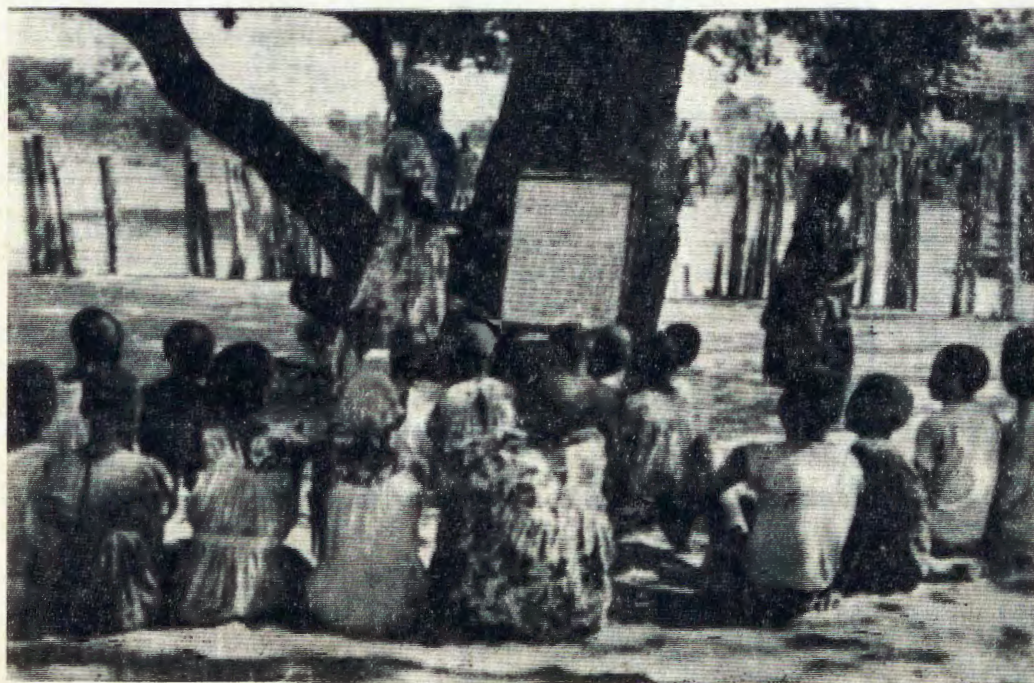
OMPINDA YA VALA NANI OHAYI LIKA KOOMBWA

Omusamane Kalola kIndongo oku na oluvalo olwindji, oshoka oyana aamati oye li yahamano noontana dha Nelende ndatu.

Iihuna, owike tuu ndjo ye na o, ye omukulukadhi oshilema shombanda. Ngele tuu to mu aadha ta shakula ko, oto hala okulila. Ye omusamane oye a ninga ndjululu yokii-muna negumbo lye kothingo, a fa inaa vala aalumentu.

Openi ya kala mbela? Sem na Lukas oya kala kw 'Akuniihole kokamba ya Shihenguti. Ou shi oha futwa shike? Ehalasa lyotombo mesiku lutatu, pethimbo lyongula limwe, pomutenya limwe na komatango shaa gumwe. Dho oombindja ndhi ye na dhuupepe, ombiga yombelela hwepo. Uukotse wawo komatango iimbathithi. Oshaando shi shaa ko oshi li pu Kako. Ngwiya Shilimela omwayina oku li ku Katutura. Hwepo ngaa shoka oyo haa ka tumba oondoloma pOndjondjo. Aakwetu aaholike, aakuluntu yoye naa hepe u li kiilonga to gongele sha tashi kwatha wo naakuluntu. Ngele u li koskola, mpoka noomwenyo dhawo ohadhi tsuwa omukumo nokunyanyukwa ngele we ya po mOlyomakaya limwe.

Jacky Amkongo.



Ovanyasha ovanalao ovo ava tava diinine eeskola nde tava kulu metiloKalunga. Ovo tava kala nounhwa noupwidi woludi keshe, ovo oimbadi yongaho puKalunga no povanhu

*Tu pangela nOmbepo yoye, omomagongalo mongerki wo.
Aagundjuka moondunge dhoye, ya putudhila momanongelo.
Aasita yopahalo lyoye mbo, ya ninge ya ka lithe egongalo.*



OONKUNDANA DHONGERKI

| OSHTAYINGERKI | AASHASHWA | | | Omboka ya pitikilwa kuulalelo uuyapuki | AAKRISTE | |
|--------------------|-----------|------------------|-------|--|------------------|--------|
| | aapagani | aanona yaakriste | kumwe | | ayehe kumwe 1963 | 1964 |
| Ondonga | | | | | | |
| Onayena | 109 | 200 | 309 | 2786 | 9313 | 9563 |
| Onyaanya | 131 | 135 | 266 | 1167 | 4802 | 4384 |
| Omuntele | 55 | 33 | 88 | 374 | 97 | 1124 |
| Okankolo | 89 | 89 | 178 | 1136 | 2352 | 2542 |
| Olukonda | 67 | 323 | 390 | 3251 | 5946 | 6272 |
| Ontananga | 13 | 168 | 181 | 1504 | 3913 | 3813 |
| Oniipa | 9 | 145 | 254 | 1371 | 3424 | 3547 |
| Oshigambo | 132 | 248 | 380 | 3182 | 7141 | 7528 |
| Oshitayi | 22 | 145 | 167 | 3170 | 5073 | 5189 |
| Okaku | 40 | 276 | 316 | 1831 | 4859 | 5167 |
| Eheke | — | 111 | 111 | 1239 | 2980 | 3095 |
| Oukwanyama | | | | | | |
| Engela | 36 | 162 | 198 | 2315 | 6801 | 6923 |
| Okatope | 44 | 101 | 145 | 762 | 2176 | 2316 |
| Ongenga | 93 | 250 | 343 | 3430 | 7424 | 7698 |
| Endola | 73 | 162 | 235 | 2216 | 5378 | 5567 |
| Olupandu | 69 | 118 | 187 | 785 | 1555 | 1765 |
| Okalongo | 88 | 164 | 252 | 1975 | 4212 | 4470 |
| Ohalushu | 73 | 165 | 238 | 1809 | 3997 | 4182 |
| Edundja | 137 | 118 | 255 | 985 | 1672 | 2847 |
| Ondobe | 161 | 174 | 335 | 2510 | 4693 | 5284 |
| Eenhana | 70 | 109 | 179 | 1533 | 2756 | 2916 |
| Omundaungilo | 58 | 102 | 160 | 629 | 1837 | 1971 |
| Nkongo | 21 | 77 | 98 | 617 | 1543 | 1645 |
| Onguediva | 21 | 118 | 139 | 688 | 2208 | 2397 |
| Uuninginino | | | | | | |
| Oniimwandi | 35 | 117 | 152 | 2367 | 4279 | 4433 |
| Elim | 64 | 184 | 248 | 2640 | 6652 | 6764 |
| Onaanda | 30 | 86 | 116 | 750 | 1965 | 2155 |
| Ogongo | 14 | 100 | 114 | 763 | 1864 | 1995 |
| Okahao | 170 | 269 | 439 | 2949 | 6305 | 6706 |
| Etilyasa | 45 | 155 | 200 | 1047 | 2541 | 2750 |
| Tsandi | 334 | 162 | 496 | 2569 | 5706 | 5768 |
| Onangalo | 211 | 85 | 296 | 1075 | 1884 | 2440 |
| Onesi | 66 | 110 | 176 | 790 | 2162 | 2343 |
| Nakayale | 131 | 195 | 326 | 1604 | 4898 | 5206 |
| Okavango | | | | | | |
| Mupini | 27 | 70 | 97 | 726 | 1874 | 1959 |
| Lupala | 23 | 42 | 65 | 605 | 1788 | 1850 |
| Kuring-Kuru | 293 | 63 | 356 | 733 | 1863 | 1924 |
| Mpungu | 86 | 29 | 115 | 215 | — | 832 |
| kumwe | 3140 | 5360 | 8500 | 66097 | 140872 | 149330 |

FUTA OMUKWETU GWOYE

OUNYUNI OTAU TONGO SHIKE

OVAWAMBO OVANAMINA OVA PEWA EPANDULO

KOlange okwa ningwa efiyafanepo. Ola ningilwa ovo va deulwa okuyandja ekwafelo lotete kovanhwa va mona oiponga ile va kwatwa komauyahame e lili noku lili (C.D.M. First Aid competition). Ovo va deulwa mouhaku ova konakonwa ngaha, ku talike eendunge neshiivo lavo moshilongwa osho shokuhakula.

Omuhona ou kwa li ta tale notapangula ou ta findana, oye E. Selby. Opa monika ovawambo vavali va findana. Omuhona D. Borchers, kamukomboni hembadi wOlange, okwa shiivifa huuninwa kutya, ovo va wina ovo: Andreas Kambonde na Ipinge Ushona. Omuhona ou akula okwe va pa epandulo. Keshe umwe a pewa ovili yoshingoli iwa. Poshiindingili eshi opa li enyaku linene.

EMBO LOGRAMATIKA YOVANAMA

Embo logramatika yelaka lovanama ola holoka notali longifwa paife mu S.W.A. Embo eli ola totwa komuhongi F. Rust, a li mu Suidwes. Omuhongi ou okwa lundulululila vali mOshinama embo loitya (woordboek) ledina "Wortschatz der Khoi-Khoi" la nyolwa ku J.G. Krönlein. Embo eli yo otali ka nyanyangidwa diva mu Kaapstad.

EEHUHWA DOPAIFE OTADI SHE-NDJE OMALUVALA

Omukulukadi A. Opperman womu Aroad okwa li e na ohuhwa ilaula fokofoko. Ohuhwa ei oya duduka omalwenya noidudilo aishe nde tai yela sheke. Konima yomafiku, olutu lohuhwa ei ola mena omalwenya noidudilo ipe, ndele aishe oitoka tuu to.

OVAPANGELI OVALAULE OVA TALELAFANA PO

Seretse Khama, omuministeli mupe wa Bechuanaland, okwa talela po Keneth Kaunda, omupresidenti mupe wa Zambia (N. Rhodesia). Khama okwa popya kepangelo la Zambia kutya, okwa hala Bechuanaland na Zambia va ehene komesho mokulongela kumwe unene moipindi yavo.



OTA PA NINGWA ONGODI YA YA KU EUROPA

Eenghundana da dja mu Kaapstad otadi ti ngaha: Ongodi yokoshi yefuta (ondersese kabel), okulongwa kwayo taku ka pula R50,000,000, otai ka tulwa mefuta pokati ka Kaapstad na Europa. Otashi ka ningwa, opo eemhumbwe domapopyafano pokati ka Suid Afrika nomadu okombada yomafuta, di wanifwe nawa. Eshi osha popiwa dr, Albert Hertzog, omuministeli weepoosa neengodi dokupopya.

VICTOR MAKWANYANE MOSHIHAKULILO SHOVA TB.

Okudja kounona wange onda kala alushe ndi nelao, nda kula alushe ndi neveluko shili. Onda kala okamati kawa unene ndi nolutu liwa; nande nda fiwa po ku tate eshi ndi kaana kanini. Onda li hai hafele edeuko, nda kala ndi hole oskola unene.

Konima ya aishe oyo onda papala ashike eshi ndi li moshihakulilo shovananhulo, nande ame mwene inai shi hala. Ndele nande ngaha osha pa nge yo ngaho omhito okukala handi indile Kalunga nokupandula alushe SANTA, eshi ehanganano eli ola ninga omuhololi munene woudu utilifa wange. Ohai lineekele, eshi otashi kwafa notashi lungameke yo ookaume na vahapu, va konge ekwafo alushe diva kundokotola. Oudu ou wepunga omwii shili ile ndi tye oudu ou kau hole okushilwa nande mokuya kundokotola.

Ndele natango ndi na po ngo omalimbililo omolwonghalo yange novakwetu yo. Onghe onda diladila okukala alushe mokati kookaume nokovakulupe nokwaveshe tuu ovo tava nyengwa okuuda ko nawa noku lilungamena T.B. ihe va kwetu, ngaashi tai dimbulukiwa koididiliki yayo oyo hai liulike yoovene; nofimbo nokuli omunaudu ye mwene ina kwatwa kediladilo lokuya kundokotola.

Natu lesheni alushe OMUKWETU, omo hatu mono eendunge neenghedi dokuhenuka oshiponga shomukifi ou mutilifi wa T.B.

Eshi u nokushiiva sha T.B. osho: T.B. yokomapunga oyo oi nolutapo. Tashi ti: ohai dulu naana okudja ku ou e i kwete tai i mu ou ehe i na. NDELE OHAI VELUKA NGENGE YA DIMBULUKILILWA PO. Eembu-



Ohamala yEvangeli nayi nyanyagule uuhethi auhe, iityani noondunge oombihu, epumpo nuulunde woludhi kehe.

to dayo odi li moinghololo nomomate. Osho nee ou e i na nge a kolola ile a fiya omate. eembuto odo hadi tuka mo tadi ka kwata ou a li ehe i na ngenge ta lyata oinghololo ile omate oo ile ngenge ta ehene popepi nando. NDELE OHAI VELUKA NGENGE YA DIMBULUKILILWA PO. Eembuto da T.B. kadi hole omhepo iwa oyo italala nawa, do kadi hole mutenya mupyu.

Lya oikulya iwa opo i finde eenghono dado. Oonakulya oikulya iwa ihava kwatwa ku T.B. nande ve li mokati kayo.

Oididiliki yotete oyo ei: To kanifa oshiviha (hano oudjuu), wa fa ashike oshipelupelu, to i ashike oshitelele. Ho kala u he nehalo lokulya. Eenghono molutu kadi mo, wa shasha ashike. To pushu unene ngenge wa nangala oufiku, ove ou nomukolo tau nyae. NDELE OHAI VELUKA NGENGE YA DIMBULUKILILWA PO. Inda ku ndokotola paife opo u mone ekwafo, efimbo nokuli oididiliki ei inai lieta yoovene poluhaela. T.B. ihai fyululwa. Kape na ou a dalwa na yo.

Omunakamba to nyono po oshiwana shoye! Nge to pe ovanhu va nwe, kala u na omeva okukosha omakopi nomahalasha. Lngamena ovanhu vaha nyupite mumwe amuke ve li omulongo, ile ngo vavali. Ekopi la nwinwa li donga momeva mapyu, opo to pele mo mukwo.

Omunambelela lungama oiyaha neenguto. Ngenge ovanhu tava di opo ve na omukifi, ondjo oyoye. NA TU TILENI YO KALUNGA MOINIMA OMO.

(Sha lunduluwa ku Linekela M. Hauala.)

AALESHI TAA NYOLA

ONGERKI YETU (OMUKULUNTU-TUMWA A. EIROLA) YA PEWA EKUNDO

Ekundo ndika olya zi kongerki onkwaevangeli pa Luther ku Johannesburg. Omusitagongalo gwawo P. Sandner okwa nyola mesiku eti 30 mu Apilili ngeyi.

MONdjalula yaaZulu onda mono oadressi yoye, nomolwa sho otandi ku nyolele, oshoka kandi shi nando gulwe mongerki yomOwambokavango.

Tango onda hala oku ku hokololela, otu na egongalo mokati kaa-Wambo aakwaLutheri mboka taa longo moomina mehala lyandje mu Witwatersrand. Onda talela po egongalo ndyoka mu Libanon, Venterspost (West Rand) mOsondaha ya yi nonda ningi elongelokalunga, manga gumwe gwaaWambo okwe li toloka, sho nda popi oshiAfrikaansa. Ondi nokutya, onda gumwa shili komwenyo gwandje nokumona ehanganano ndika lya kola lyaakriste mookomboni dhoomina mokati komahongololo ogendji nomoothina odhindji. Oyo haa ningi aluhe omalongelokalunga gawo noye na oongundu dhi ili nodhi ili dhoo-skola nodholwiimbo. Gumwe gwomaasitagongalo yetu yaa'Afrika ohe ya talele po aluhe lumwe pethimbo lyoomwedhi mbali, oha ningi oliturgia moshiWambo noha uvitha kekwalho lyomutoloki. Oha shasha noha koleke noha yakula Uulalelo Uuyapuki. Osondaha ya yi, otwa shasha aantu yahamano notwa koleke yane. Otwa nyanyukwa sho tu nompito okuyakula ngaaka kashona.

Ngashingeyi aawambo ohaa pula omaimbilo gEhangano. Sho nde ya topolele uufu womOshikwanyama nomOshindonga, oya nyanyukwa unene.

Tu tseyithileni ano, ngele tatu vulu oku mu tumina omadhina nomatseyitho kombinga yaamboka ya shashwa pethimbo ndika. Otatu mu yakula nenyanyu.

Ngele gumwe gwomaatumwa nenge gwomaasitagongalo aawambo te ya ku Johannesburg, otatu longekidha etalelopo kegongalo ndika, oshoka ndi shi shi, oyo taa ka nyanyukwa unene, ngele taa ningilwa elongelokalunga melaka lyooyina. Nenge pamwe ope nompito oku tu tumina ongalo yomapopitho nenge yomelongelokalunga mOshiwambo? Onda pewa eshina no tatu vulu oku li pulakena nawa.

Hilja J. Newaka, Walvis Bay, ota ti oku na ehafo nota pandula Kalunga e mu endifa nawa mefimbo olo li li konima yaye mokukalamwenyo kwaye. Hilja ota ti kutya, paife oku wete movanhu efupa, ondu-mbo, olwisho noupote. Eshi to tale mukweni ino mu hala nande.

Ota ti yo: Efeni oupote wounyuni ounde tamu shikula Omwene. Oye omuyapuki noku hole ouyapuki, Oye a yandjela ounyuni omwenyo waye, oyo aveshe va ka mone omwenyo. Ta kundifa na Omuvithi 2:3.

Risto Amputu, Swakopmund, ota ti: Tu gongaleni aluhe poohapu dhOmwa manga tu nompito. Tu kongen oshipala sha Jesus, oye etu pendulile enota nondjala yokomwenyo. Okwe tu pe tu leshe mu Amos 8: 11-12.

I.H. Shitutuma Nafuka, Waalvis Bay' ota ti: Ovaholike, Omwene ota ifana ovalunde aveshe. Ota ti: Ileni ovamwange ava mwa loloka nomu na enota nondjala. Ileni ku Ho, oye ote mu pe omwenyo. Onghe liyandja nomadiladilo oye aeshe. Limbungila shili, onhapo yamukweni hayo yoye.

Ev. Simon Hamutenja, Box 235, Mariental, ota hokolola oshiponga sha ningwa 10.5. 65 mu Mariental. Omukulukadi omutilyane a lyatagulwa nai koshihauto. Ota ti, natu kale twa pashuka ngashi Omuwa Jesus te shi popi mu Luk. 12: 35-40.

Moses Shihepo, Tsumeb, ota ti: Omushitwa wa Kalunga omukwetu, kala wa kolelela mOmwene. Oye eenghono detu. Efimbo ola ya, pamwe to kala nokukeuka konima. Lungama nge to keuka lwanima, pamwe to shituka oshivanda shomongwa, u fe meekulu wa Lot. Omwene oye ouyelele nehupifo lange. Eps. 27: 1-5.

Efraim Armas, Walvis Bay, ota hala aaleshi ya hambelele Kalunga pamwe na ye. Oye a li a teka no kwa kala ethimbo mosemenda moshipangelo. Ota pandula wo amatati ooyakwawo: I. B. Fotolela, J. Bago na K. S. Shilongo, ye mu umbile ongalo ya gu R5. 94 1/2. A gandja omakundo ngaka: Heb. 2: 10-13; 1Joh. 4: 1-12 neimbilo mEhangano 632.

Salomo G. Namunjekwa, Windhoek, ota pandula, eshi evangeli tali udifilwa yo nomOputu. Oye okwa tila osheshi ohatu hale okudimbwa elaka lOshiwambo tali ti: "Ino komba mepya manga meumbo mwa kaka." Okwa hulifa ombapila yaye nepulo eli: Omukwetu onaini to dimbuluka okukomba meumbo?

J. Hauuanga, Gobabis, ota ti: Ope na ovanhu paife tave litangele oukriste ile oudalwa wavo. Omuntu ke na ko nokwoongala peendjovo da Kalunga. Otava ti: Meme na tate ovakriste. Heeno, ndele omwenyo nge inai liyandjela Omwene, kape nehupifo. Omwene Jesus ta ti: Ohandi uya diva ndi nondjabi okupa keshe umwe shi fike poilonga yaye. Onghe konga Omwene fimbo ta monika. (Mark. 8: 36).

Johannes Job, Box 239, Windhoek, ota ti: Ngele ogendjo ya tono, inatu lengalengeneni we, tu hiteni mongerki. Ngele itatu tedhulula, osho tuu tatu ka sa atuhe.

KALUNGA OSHO A PA NGE.

Ovanyengwi vomounyuni wopaife osho hatu ti: Kalunga osho a pa nge. Eshi ohashi di peni? Omolwoku ha itavela kwetu. Omwene Jesus ota ti komukolokoshi: "Oshili konena eli oto ka kala pamwe na ame moParadisa".

Nani Jesus noposhivelo shoheli ota dulu okuhupifa omunhu. Owe shi itavela? Lesha Luk. 23: 40-43. Mat. 12: 19-20.

Omukweni:

Titus Namunyekwa.

M. Nekundi Shifugula, Box 156, Windhoek, ota hokolola nkene ya talele po aavu moshipangelo eti 18. 4. 65. Oye ya imbile oondjimbo noye ya uvithile oohapu dhOmuwa. Ehuku lya ti: Eso, oonkondo dhoye odhi li peni. Okwa hokolola wo, nkene omeho gaavu ga adhima nokupetukapetuka komitse sho yu uvu oondjimbo.

F. Kautondokwa na K. H. Haipinge, Walvisbaai, otaa ti: One amuhe mboka mwa kala meitaalo limwe mu Jesus, kaleni meitaalo tuu ndyoka, oyo eitaalo lyoshili. Oyendji oyi ikongela omaitaalo gawo yene. Oye tu kundu wo noohapu dha 1Kor. 13: 1-13 neimbilo mEhangano 429.



Mefano ndjima a kuutumba nawa kemanya e ta dhiladhila. Ihe ongiini? Pwa fa pe na ngashingeyi aantu ye vulike oondunge ku ndjima? Konakona oondunge, ukriste, iilonga niitya yokana koye, u tale ngele oho pangelwa tuu kOmbepo Ondjapuki.

FINSE SENDINGDRUKKERY
OVAMBOLAND
ONIIPA

