



OMUKWETU

No 7

APILILI

1965

INA HALA OKU A NWA.

Mat.28:33-54.

Omunhu nge a monika oudu wokutandwa, ngenge ta tandwa a haku-lwe, oha vendelwa omuti wokukofeka, opo a ha ude ouyehame.

Osho ovatondi va longekida okupa Jesus omavinyu mumwe nonyango. Jesus ina hala oku a nwa. Omolwa shike? Enyamukulo ohatu li pewa komuhunganeki Jesaja ou ta ti: "Ndele oye okwe li twika oudu wetu, omaehamo etu okwe a humbata." Jes.53:4. Ina dimina oku a nwa, omukwetu. Omolwohole yokuhola omulunde, okwa hala okuhumbata po oupyu noudjuu aushe weholo lehandu la Kalunga omolwetu. Ye ina tila efyo, ndele oina hala okutetwila okuyehamekwa molwoulunde wange nomolwoulunde woye.

Va fyuulula amidjalo daye. Ovanhu vamwe ohava hovele okufyuulula omunhu manga e li pokutokoka. Ovatondi va Jesus, mefyo laye, ova fyuulula ashike amidjalo daye dolutu lwolupe lwomunhu. Inava fyuulula omudjalo wouyuuki, inava fyuulula Jesus ye mwene nokuli. Osho omunhu e li. Omolwoinima ya fimanena ounyuni ou, omunhu ta nyengwa okufyuulula ouyuuki wa Kalunga, mefyo la Jesus lokomushiakano. Omolwoinima oikwadu, omunhu ta nyengwa okuhoolola a fyuulule Jesus ye mwenemwene.

Ve mu sheka. Natango otapu monika ovasheki mounyuni ou wetu. Tava sheke omakumaido, tava sheke omaudifo ondjovo yomushiakano wa Jesus, ndele tava sheke oukriste aushe. Omasheko oo oukolokoshi wa mbabalela Jesus komushiyakano. Ovanhu vomufye va ninga ovakolokoshi vavali komushiyakano pamwe nOmukulili, otava holola oukolokoshi wetu. Onghe omukolokoshi a hokiwa ku Jesus, oye ou ta indile ku Jesus: Omwene, dimbulukwe nge mo-shilongo shoye.



Ina dula okulikwafa. Ov. 24. O vapristeli, ovanongo vomikanda novakulunhu, ve shi tya nokusheka. Ndele pamhangela ya Kalunga, osha fewa. Dimbuluka eimbilo tali ti: "Oye e tu hupifa mefyo twe li ilongela. Ngeno Jesus ina fya, ngeno twa kanena." Osho naanaa, ngeno Jesus e likwafa ye mwene, ngeno twa kanena. Ngeno eenghono da satana de tu pwipwikila po filu.

Efyo la Jesus ole tu pa ompito yokufyuulula ouyuuki waye nomwe-nyo walushe oko ku mu itavela. Ovakwati va Jesus ova fyuulula amidjalo. Owa fyuulula shike mefyo la Jesus? Oto fyuulula shike mefyo eli la Jesus nena? Okwe ku pa omhito u hoolole. Onghe olwoodi eli linene la

*Onde ku tilile
Ombinzi ndi ka se,
Ngay' nde ku kulile,
Ongoy' waa yonuke.
Onde ku igandjele,
—Oshike wa pele ndje?*

*Egumb' ewanawa
Megulu lya li mo,
Onda li ndi li na
Nonde li thigi po.
Moloy' ndi hepekwe.
To hepekelwa ndje?*

*Kombanda yevi ndi
Okwi nda yangele.
Nda ning' Omukulili,
Ngay' ndi ku hupithe.
Onde ku endele.
Ho endele olye?*

*Nda sile eso ndyo,
Lya shi kutumbulwa.
U mon' ekulilo,
Nda li nde ehamekwa.
Onde ku kondjele.
Ho kondjele olye?
Ehang. 70:1—4.*

ningwa muGolgota omolwoye nomolwange otali ti:

1. Tal' ohole ya Jesus ya gwane-nena To yi adha momushigakano. Il'omulunde omukweyi, ngoy' wa hepelela, Ngo'u igandje moho-le tuu ndjo. Inda tuu komuti ngu. Tal' ohole ya Jesus ya gwanenena, To yi adha momushigakano.
2. Tala Jesus, ongoye omunandjo omukweyi, U na oondjo dha tiligana. Ngoka ta yi kuye, Ita tidhwa nuageyi, Oy'omukwathi ha silohenda. Inda tuu komuti ngo. Tala Jesus, ongoye omunandjo omukweyi, U na oondjo dha tiligana.

Jason Haufiku.



Apilili 1965



Udifileni aveshe
Evangeli louhamba

HAMOLWEHANGANO, AAWWE, OMOLWETUMO.

Omumvo gwa piti otwa tumbula nale nkene ombepo yokuninga omahangano tayi koko miilongo nomiigwana. Aantu otaa kongathana ya hangane, oshoka oya dhimbulula oya pumbwathana. Aanangeshefa, aagundjuka, aapangi naalongi yongerki yetu oya toto omahangano gawo 1964. (Nando ehangano lyaalongi inali pwa manga okukundathanwa, osha yela kutya, omumvo 1964 oya tukuluka oku li ninga). Elalakano lyomahangano ngoka Aawambo ye ga toto, olyo okulonga oshilongatumo lyongerki yawo. Kalunga na hambelwe sho oshigwana shAawambo sha taamba oohapu dha Kalunga nomwenyo aguhe: "Otango ano, kongeni oshilongo sha Kalunga nuuyuuki we, nena ayihe otamu yi gwedhelwa ko." Eeno shili, Kalunga ita kala inaa yambeka oshigwana shoka sha hala oku mu longela.

Moshigongi shaasita yongerki yetu mEngela, sha gongala okuza 9-12/2 65, aasita oya dhimbulula nkene ya tokelwa aluhe okuthika metokolo lyokudhika ehangano lyawo. Ombadhilila yowala oya ningi etokolo tali hambelitha Kalunga ku ayehe mboka ye hole oshilonga sha Kalunga. Oya tokola ngeyi:

1 "Otatu dhiki ehanganotumo lyokulonga oshilonga shetumo mu Angola. Omusita gumwe mu Angola na longe oshilongatumo peha lyetu, otse tatu futu ondjambi ye, yi pitile moshikethangerki."

2. Omusita kehe e nokufuta R4.00 komumvo moshikethangerki omolwehangano ndika, ondjambi yomutumwa gwetu opo yi tsakane."

O! Tu imbeni mombepo yimwe ovelise ndjika: "Tu pangela nOmbepo yoye Omomagongalo, mongerki wo. Aagundjuka moondunge dhoye Ya putudila momanongelo. Aasita yopahalo lyoye mbo Ya ninge, ya ka lith' e-gongalo".

Etokolo ndika lyaasita olya tuminwa Epangelongerki li li koleke, lyo li yoololele omusita gumwe a kale ta longo oshilongatumo medhina lya yawkwawo. Aagundjuka oya indile nale ya pewe omutumwa, noya yoololelwa omuevangaliste ta longo ku Kongo maayelee. Aapangi oya tumu nokuli iimaliwa yokutamekitha oshilongatumo lyawo kombelewa yongerki 1964. Ngashingeyi ombelewa yongerki otayi tegelele etokolo lyaapangi muumbapila nomadhiladhilo ngoka gaali:

1. Olye ngoka ya hala a kale ta longo oshilongatumo peha lyawo?

2. Otaa futu shi thike peni komumvo?

Uumbapila wehogololo otawo ka leshwa moshigongi shonuumvo moka ehogololo tali ka mona oonkondo.

M. Ngipandulua

"EPYA OLYA TILIGANA, IHE AALONGI KAYE PO."

Mat. 9: 36-38.

Omuwa Jesus a talatala koombinga noombinga dhiilando nodhomikunda, dha Palestina, ndele ta etele aantu ohenda sho ya foonzi dhaa nomusita. Nokutaalela kaalongwa ye e ta ti: "Iilya oyi li po oyindji, ihe aalongi kaye po. Galikaneni ano omwene gweteyo a tume aalongi ketyo lye." Mat. 9: 36-39.

Nda hala okulombwela omugundjuka kutya: Epya olya tiligana, nde-

le aalikoli ka ye po. MOmbimbeli otatu adha mo ehokololo limwe tali ti: "Taagulukila huka u ye u tu kwathe Paulus." Paulus ti ithanwa kuMakedonia e ke ya uvithile evangeli lyoshilongo shaPamba. Na tse wo aayelee kOmpungu-vlei tatu ti: Omulongi gwaanona, omupangi nomuyevangaliste, taagulukileni huka mu ye mu kwathe! Il. 16:9-10

Lesha nawa ovelise ndhika mbali e to dhiladhila Paulus mwene, elongo lye, etseyo lye, uulinawa we. Natu tale ano manga mOmbimbeli sho tayi mu holola nawa. (Il. 22: 1-5.)

Oye sho i ithanwa kuNampongo ina tinda a tale okutseya kwe. Taagulukila huka u ye u tu kwathe! Oshoka epya olya tiligana, ndele aalongi kaye po. Tandi ti, omunandjokwe, omungela, omushigambo, omukahawo nomunguediva, taagulukileni kuMakedonia kOmpungu.

Okahokololo komupagani Omuyapani edhina lye Nisim, oye ogwoomezimo lyaa namagadhi aakengeli, aali yomagadhi. Aniwa okwa toola esiku limwe ombapila tayi popi eshito lyomuntu. Nokwa kwatwa kedhildhilo ndika kutya, ngele oye omuntu gwa Kalunga ota pumbwa wo oku mu longela. Nokwi iyaka maandja he na yina momagadhi vongo, a ka konge elongokalunga, nando oye a li omunona gwoomvula 17. Oshike sha ningitha Nisima omuniilongo?

Okwa hala okulongela Kalunga nokwa dhimbulula kutya, Kalunga iha longelwa nomupunda gu noondja ku mono. Oto patana? Tala mOmbimbeli 1Mos, 12: 1-3.

Kalunga ta lombwele Abraham kutya, za mo maandjeni, megumbo lyaho, mooTarah nomezimo lyeni, ngu u ye kevi ndyoka tandi li ku ulukile. Kalunga a thikama mOwambo ta ti: "Za mo moshilongo sheni ngu u ye kushoka tandi shi ku ulukile."

"Taagulukila huka u ye u tu kwathe, oshoka epya olya tiligana, ndele aalongi kaye po." Tala u tale mokavelise kontopolwa ndjika Abraham sho a yamukula 12: 4-5.

Mpaka otandi ku etele kashona okuya kwandje metumo lyOkombwenge ya Haimalwa. Onda kala ndi nehala okulonga muAngola, moka nda putukile mo kashona nonda mono uupagani wamo sho nde endaenda mo ishewe ngashingeyi. Ihe ompito kayi po. Nde yi mono ihe kOkavavango. Egongalo lyaandjetu nookuume kandje naakwanezimo lyandje naashiwikile yandje sho ye shi uvu, otandi yi ko kOmbwenge, oya pula ndje nekumagidhopulo kutya to yi peni, kOmbwela kaakwankala?

Ngiika to ipula nehokololo lyandje odhindjindhindi. Tu tale u tale, omutumwa gwotango muuyuni auhe, sho a li moshilonga shetumo. Mat. 2: 13-15, Lük. 2: 7. Jesus Kristus ya Kalunga a langekwa metemba lyokulila iimuna. Otwa tseya iimuna mpoka hayi lile, tashi vulika yi nyatekele mo wo. Ngashi tayi vulu, ha lyokulila aantu moka hamu opalekwa nawa, ndele olyokulila iimuna.

Taku twikilwa....

O K A A N D J E T U

SHA LONGWA, SHA PWA!

Joh. 19: 28-30.

Ovakwetu, efimbo eli olo efimbo lidjuu shili loluhodi noleididimiko. Omulunde ove ou wa tokekwa no wa pofipalekwa komutondi Satana, pwilikina elaka lefindano tali di mokanya komufindani Jesus tali ti: Sha longwa sha pwa!

Oshilonga osho Omwene Jesus e tu longela, osho oshinene shili. Okwe shi fikifa pehulilo. Oye okwa handukilwa ponhele yetu. Oye okwa humbata oulunde wetu. Omatimba etu aeshe okwe a londeka komushiyakano neididimiko, omo tuu omo ehandu la Kalunga ole mu denga. Onghe mokuhumbata ehandu eli ota ingida neididimiko: Sha longwa sha pwa!

Omwene Jesus manga a li mounyuni, ovanhu vahapu kave shi ku valulwa, okwa li hava kala puye. Ova uda luhapu mokanya kaye eshi ta ti: Omatimba eni a dimwa po, indeni nombili.

Efiku olo a li a endjelela komushiyakano, okwa talwa kwaveshe, oye omufingwa shili. Oye a fingwa omolwetu. Fye ovanamatimba paife itatu pumbwa vali okufila momatimba etu, osheshi oudjuu aushe womatimba etu okwe u londeka komushiyakano neididimiko. Pomushiyakano oye ota ilikanene ovahepeki vaye: Tate, va dimina po, osheshi kave shi eshi tava ningi. Oye a ninga paife efina lehupifo laveshe ovo tava dulika kuye notave liyandje kuye. Ovakwetu, tu yeululeni hano omitima detu tu tambuleni ekuilohupifo twe lilongelwa kOmukulili wetu. Oye ota ingidile ovashitwa avesheveshe fiyo opehulilo lounyuni: Sha longwa sha pwa. Aveshe ovo tave mu tambula, ote va pe eenghono va ninga ovana va Kalunga, ovo tuu ovo va itavela edina laye.

Tala omukwetu omuholike, ekuililo eli otali tambulwa omaano. Ofye itatu pumbwa okutwala ko omahodi etu omolwomatimba, ile omailikano etu noilonga yetu iwa itai kwafa sha. Kekulilo itatu pumbwa noitatu dulu okuwedela ko sha. Jesus eshi a tya sha longwa sha pwa, osha wana. Fye ohatu pumbwa ashike tu tambule ekuililo eli li ninga letweni.

Enyamukulo letu olo eliyandjo kuJesus, opuwo. Hano aveshe ovo tave liyandje kuJesus, ova udanelkelwa kuKalunga kutya, ovo ovayuki omolwa Jesus, osheshi osha wani fwa, sha longwa, sha pwa.



1. Sha longwa sho sha pwa!
Onakuhepekwa,
Onzigona ondjapuki,
KuGolgata a si.

2. Sha longwa sho sha pwa!
Onakunyatekwa,
Kuulunde nokiihelele,
Ndi ilongele ndi se.

3. Sha longwa sho sha pwa!
Onakuhumbata,
Omutenge ngu gwopukile,
A mangulula ndje.

4. Sha longwa sho sha pwa!
Koonakuhepekwa,
KOMukulili a sile ndje,
Ondi isizimike.

(Imbileni Omuwa 17.)
Abraham J. Haileka,
Windhoek.

OKANIMA KAMWE KA HAFIFA NGE

Konima yomafiku manini meme eshi e tu fiya po mounyuni ou, onda kufa okameno kamwe haka eta eengala diwa. Onde ka twika pefina lomushiyakano wokombila ya meme nonda shuna keumbo.

Eshi pa pita omafiku, onda ka tala kombila ya meme. Onda hanga okameno ka kula ka eta eengala diwa. Efiku olo onda hafifwa kokameno nonda li ndi wete, onga meme ta kundu nge, nande oye a fya nale.

Onda dhimbuluka diva kutya, pefina lomushiyakano wOmwene opa twapuka omuti womwenyo, tau imi oyiimati. Fye hatu li oyiimati yao nde hatu kala nomwenyo.

Ame onda hala okuhafela omushiyakano wa Jesus, Omwene wange, shi dule eshi nda li nda hafela wame-me. Ondi shi shii, nge handi li oshii-mati sha Jesus nomounyasha wange, otashi pe nge omwenyo.

Johannes N. Kashokulu.

OTU NOKUKALA NGAHELIPI NOMUNHU OMUKWETU?

Kalunga ote tu lombwele, tu kale tu hole omunhu omukwetu. Otu na oku mu yakula, tu mu amene no tu mu popile kolutu nokomwenyo.

“Ndele ame ohandi mu lombwele, holeni ovanaita na nye, indilileni ovahepeki veni.” Omukwetu oye omunhu keshe ou tu mu shii ile tu he mu shii. Nande oye ohamba ile omufyoona, omutilyane ile omulaule, oshipuna ile ohepele na kaume ketu ile omunaita na fye.

Ofyeni atusheni otwa shitwa ku Kalunga notwa kulilwa ku Jesus Kristus mohonde. Oye a shita oludi lovanhu aveshe, ve li kombanda yedu alishe. Hano ondubo nokatongotongo otaka di vali peni? Fye atushe vamwe, twa shitwa kuTate umwe aeke notwa kulilwa kohonde imwe.

Juuso David,
Tsumeb.

OMONA WA DAVID, FILE NGE ONGHENDA

Mat. 15: 21.

Ehepaululo eli otali tu hepaululile omwalikadi omukanan, wokomikunda da Tirus na Sidon. Nande oye ompaani ota indile ekwafo kuJesus omolwomona waye e nomhepo ya nyata.

Eindilo laye la udika kovalongwa nove li fikifa kuJesus. Enyamukulo la Jesus limwe: “Onda tuminwa eedi domeumbo la Israel adike” inali mweneka omwalikadi. Okwa ehena keemhadi da Jesus nokwehela shili. Okwa li e neitavelo.

Jesus ta ti: “Eitavelo loye oline-ne, ningilwa ngashi wa hala.” Okwa filwa ngaha onghenda nomona okwa velulwa.

Eshi tashi tu longo, tu inekele Jesus oye ekwafo nomuhupifi wetu. “Eshi tamu indile medina lange, ohandi shi mu pe, Tate opo a fimanekwe mOmona.”

4

OSHIKOLOLO SHEGUMBO

OOLYE VE SHI OKUYAKULWA?

Omwene Jesus okwa ti: "Eehepele omu di na alushe mokati keni." Nona-le mounyuni wEtestamendi Likulu eehepele novafyoona noingudu ova ifanwa ohalutali ya Kalunga. Kalunga mwene okwa popila eehepele, osheshi okwa tula meemhango daye epopilo leehepele. Moshiwana shovayuda eyakulo leehepele ola li la fimana. Olo ohali ifanwa eyakulo lokuyakula Kalunga.

Omwene Jesus ota ti: "Ngenge to ningi oitelekela, ifana oingudu novapofi ovo vehe na sha oku kufuta". Omwene Jesus mokutonga eehepele ote di yeleke na ye mwene. Osheshi metokolo la huuninwa ota ka tya: "Ashishe osho inamu ningila ovamwata-ate ava va dinwa, aame inamu shi ningila." Eyele loshipuna na Lasarus otali yeleke ohole yokulihola, okulidika, okulipalula nokuliyakula mwene nawa, nokuhe na ediladilo lokudiladila eehepele. Eyele lomusamaria otali yelifa yo nawa oshinima eshi.

Eyakulo eli itali ti ashike eehepele odo adike di na okukwafwa nokumona eyakulo. Ovanhu vahapu ova hepa mouwike. Pamwe ove li momaluhodi eefya, omauvela oovakwao, ile ovaendanandjila ovo tava ende meendjila dile momitenya. Osheshi osho Abraham a ninga, a mona ovalumenhu tava ende, ndele te va shakeneke. Nani ovanhu ovaengeli, ovo ve mu udifila oinima ihapu. Omukanda kova Heber otatu ti: "Okuyakula ova-enda inamu ku dimbwa, osheshi vahapu moku shi ninga, va idilila ovaengeli momaumbo nande inave shi shiiva." Oshilonga shoudiakoni osho okuhapululila ovakwanaluhepo va mone ehapuluko nande olokafimbo oko.

Eshi twa kala molwendo efimbo eli alishe, onda mona kutya, nani eyakulafano otali pulwa okudiininwa neenghono, osheshi oluhepo otali pangele movanhu vahapu. Ovanaudu neehepele, ovapofi noingudu novanaudu, ovo va vela omido dihapu, itava filwa nawa oshisho ngaashi tashi teelwa.

Okuhayakula oku otaku di peni? Pamwe omolu omaloloko ovayakuli eshi va efelwa oilonga yomayakulo avo aveke, ovanhu vakwao ova fa va mwena. Enyamukulo likwao: Pamwe eehepele novapofi va hapupala mefimbo eli, ile pamwe oku na sha osho tashi imbi ovanhu aveshe okulitula meyakulo lovayakulwa vavo. Apa ohatu ti, ovanhu otava hepa, osheshi lu-



Oondjokana dhoye no dhandje odhi li ngini?

hapu ovayakuli vokuyakula keva hapu naava hava yakula otava pumbwa ovakwafeli.

Eshi nda hanga ovakwanaluhepo va hepelela, onda diladila luhapu omapulo oo nda pula nale. Nenyamukulo linene nda mona olo OHOLE tai pumbwa OKUHWAMEKULULWA ALUSHE. Ohole otai hwamekwa keendjovo da Kalunga. Ovakriste ovo ve nohole, ihava tale oukwao ile oushivikile ile oudalekele, osheshi ohole otai ningi ovanhu ovamwainafana.

Eumbo lomupofi li li pomaumbo ovakriste, otali yakulwa nawa ngenge ngenge pe nohole. Ou e nomunaudu waye aungaunga naye efimbo lile, ota talelwa po pamwe nomunaudu waye. Ndele luhapu ovanhu mokutalela po ovanaudu, ova dimbwa okuhekeleka ovayakuli noku va twa omukumo va ha loloke omutengi oo mudjuu. Luhapu onda mona oluhepo lovavelifi yo. Eefiye novatekuli veefiye luhapu ova faafana mokukala kwavo. Onghe ou to talele po ofiye, talele po yo omutekuli wofiye.

Ovo tava teeleele eyakulo ove li po vahapu unene mefimbo lehumokomesho. Eshi oinima ya ehena komesho, paama otaku pumbiwa eemhito di lili nodi lili opo eehepele di kwafwe novanaudu va yakulwe nawa.

Rauha Haiduua,
Engela.

OINIMA IMWE KOVATUNGA-UMBO

Omwene nge ita tungu eumbo, ovatungi otave lihepeke ongaho.

Ovamati vakwetu, pwilikinini nawa. Mokukonga oukadona, taleni nawa oolye va wana okukongwa. Onghe-nda unene. Ounona ovo tava di moupaani inava longwa sha. Opo nokuli va shashwa omudo oo. Okaana fiku limwe oka hala okuya meefikola donona ko oke li peedula 13 ile 14 oka kongwa nale.

Fimbo nokuli taka fiki peedula 15-17, ye omumati okwa hala nale okuhombola. Vati na ka ye mekoleko ko kehe shii okushanga ile okulesha nande okuli. Voo ooina yokakadona ova hafa nee ve wete omona a kula nomumati ta kondjifa omufita: "Tate, onda hala okuhombola, okakadona naka ye mekoleko." Omufita ta kondjifa nokupukulula omumati: "Menhu wange, ngenge shapu kongwa omunhu ou a wana okuhombolwa."

Paife omumati ota pi nee koinima yaye oyo a putula. Akutu kaume kange, omunhu ina shiiva manga okulesha, vali ina tekulwa moukriste neendjovo da Kalunga inadi mona omhito mokukalamwenyo kwaye.

Kaume, to eta oluhepo meumbo leni. Nge to ka ya kOushimba moku-shanga oluhepo lwa holoka meumbo leni. Eenghundafana dambuleni tadi ka udika komaumbo omolwoku ka shangelwa noku ka leshelwa. Oihuna!

Ekongo lounona tali shunifa oshiwana monima. Oolye ovo tava twikile neeskola? Vali mokutula onunona vanini mekoleko, oto tauluka omhangongerki, osheshi otai ti: Omunhu na leshe ye a kolekwe nawa.

Woo ovo ve li meefikola dekoleko eshi vehe shii okulesha nande! Ounona vovakriste yo vamwe tava lalakanene eehombo vo vehe shii okulesha. Vakwetu, ei ohoni yongaho.

Nye ovamati, kendabaleni mu konge oukadona ovo va wana okuhombolwa. Oomeme nootate, inamu dimina vali onunona va kongwe vanini, osho ohoni inene kovanandunge. Okaana naka wanwe kouhema ovo to ka pe voluhepo fiyo ka kula. (Ino lalakanana, toola ehahi.)

Inaku monika vali ominwe meembapila dokuhombolifa, hatu yambululweni. Otwa hala ehumokomesho.

Ngenge hatu diinine eshi hatu shi lombwelwa nena omaumbo etu otaa ka kala e nefimano linene.

Ev. A. Namueja.

OSHIKOLOLO SHAAGUNDJUKA

KUKU HAAPANEN NONGUNDU YE OMPE

Ta, iinima otayi humu shili ko-meho. Okuza eti 29.3.1965-2.4.1965, mOniipa mwa kala epukululoskola (kursus), tu tye lyaasilishimpwiyuteleki (matrone) yomooskola (kosskole) no-miipangelo.

Epukululoskola ndika olyo epelela mOwambo. Kuku Helmi Haapanen, ngoka a kala meyakulo ndyoka oomvula 27 muka mOwambo, oye a patululile ompito ndjika mOwambo. Kuku Haapanen okwa ti: "Ando epukululo ndika li ningwe aluhe lwaali omumvo kehe." Aalongwa 12, ya za koombinga noombinga mOwambo, oya kala mepukululo ndika lyotango.

Aalongwa ya kala ngeyi mepukululolongo lyoohapu dha Kalunga na ndyoka tali ya kwatha moshilonga shawo shokuyakula (mOshikwanyama - okuviyauka). Oya ningilwa oongulohi oohungi. Omukanka gwa fulwa nekankameno lya tamekwa olyetungo lyoomvula odhindji dhokomeho moshilonga shika sheyakulo.

KAALONGI YANDJE

Ctandi eta ebandulo enene kune, kaalongi yandje unene mboka mwa yi ku Soomi: omukuluntu gwengongelo lyaayakuligongalo, tate T. Pentikäinen nefolo na meme Laina Aho. Omwe tu yakula miinima ayihe yopalutu, na unene yopamwenyo. Mootundi mwe tu longo nombili neidhidhimiko. Omwe tu pe oshindji shomomagano geni. Yaloo! Omuwa mwene na landule iikaha yeni, ye e mu yambeke! Shimwe ashike ndi shi shi, natango tuu otamu tsikile oshilonga sheni momagalikano. Otatu mu tegelele, Omuwa e mu galule ishewe mu tsikile oshilonga sheni huka.

Otandi mu kundu nooverse dhika:

"Mikemohodi tu di na mehalakano eli; nde e etimaumbwile tu li na, Omwene eshi ta ti: Kapuna ou ta dulu sha, Ku kufa meke lange nee, nomoshuuda shange.

Eembuto dOmwene wetu wa kuna medu letu, Ua longa nowa udifa vahapu washiiwifa Ohole yOmwene wetu oyo notai menifa eembuto we di kuna".



Mefano tatu mono kuku Helmi Haapanen nongundu yaalongwa mboka ya kala mepukululo lyotango.

EENHANDA MOMAONGALO

Oshiongalele shovawiliki vovanyasha vongerki aishe, sha li sha ongala mEngela eti- 16 la Febuluali fiyo efiku 1 la Malitsa 1965. Osha tala kutya, onhanda yovamatiogalo nokadongaongalo oya pumbiwa momaongalo.

Oshinima shovene oshipe, otashi pumbiwa okuyelifilwa nawa ovanyasha momaongalo. Ndele nande ongaha, otashi dulika ku hovelwe pafaneko eli tali shikula apa:

Eongalo keshe otali hoolola onhele apa tapa kala onhanda yalo, ngashi oshinagoga ile pamwe pelili. Ndele omolwomaupyakadi asha, onghee keenhanda otaku iwa pamalufo. Ovamatiogalo ovo aveke noukadongaongalo ovo aveke, osho yo oumatyonaongalo ovo aveke noukadonga vანი ovo aveke. Onhanda keshe nai kale omulinekelwa ou ta file oshisho onhanda, ngashi omufitaongalo, omwevangeliste, omulongi ile umwe elili paudafano lavo.

Eshi tashi longwa meenhanda.

1. Okuudifilwa eendjovo da Kalunga.
2. Okushakena na Kalunga mongudu nomokulikalela mouwike.
3. Okuliehenifa komesho mokushiiva Ombibeli, ngashi omapulo omOmbibeli, okulesha nawa nokuholola.
4. Okwimba.

5. Okukundafana omolwoshilonga shetumo.
6. Okutala nghe taku kwafwa ava ihava holoka moyongalele.
7. Oilonga yomake: Oitungomwa noihongomwa.
8. Omalinyengo nomafiyafanepo.
9. Okuumba ongalo nosho tuu. Oikulya yomonhanda.

Ovakwanhanda vovene otava dulu okwetelela oufila nokuyandja sha omolwombelela pamaudafano avo. Eongalo yo otali dulu okukwafa ovana vavo apa tava nyengwa.

Oyeendifo.

Mokuya konhanda, ovakwanhanda otava dulu okwenda kolupadi, ndelene otashi dulika yo, va pule ekwafo lokatamba kokuhumbata oikulya neembiya noinima yavo.

Oshilonga shonhanda.

1. Okutekulila ovanyashaongalo omhepo imwe.
2. Opo ovanyashaongalo vahapu va shiive onhanda kutya oshike.
3. Okwikifa ovanyashaongalo meenhanda.
4. Okuhwamifa omhepo yovanyasha nokuliehenifa komesho vovene moinima ilili noi lili.
5. Pafaneko eli, eongalo keshe otali dulu okuhovela onhanda yalo, nge tashi dulika.

Tala, nghene sha wapala, sha-wapalelela, ovanhu novamwaina nge tava kala kumwe, ve nombili. Ps.133:1. Aili Muatotele.

ELUNDULULO LOMBIMBELI MOSHIKWANYAMA OTALI LO- NGWA NOUDIININI

Okulundulula Ombimbeli momalaka amwe noku i lundululila melaka likwao kashi fi okati komokutwi. Otu shi shii, omunhu keshe ta pumbwa okulileshela eendjovo da Kalunga melaka laina. Okukufa oshili yEvangeli melaka limwe noku ilundululila mu likwao i li ngashi i li, inai penga nande, osho oshilonga shinene. Osho oshilonga shOmhepo Iyapuki, ndele Kalunga ote shi longififa omunhu.

Okudja 29.3.1965 fiyo 2.4.1965, mOniipa mwa ongala ongudu oyo i kwe-te omboko elundululo lOmbibeli yOshikwanyama. Ongudu ei ohai ongala alushe efimbo nefimbo. Pefimbo eli va leshulula nokukonakona omambo ova-profeti: Mika, Habakuk, Sefania na Jeremia.

Tu indilileni Evangeli li kale naana ngashili li momalaka etu, li longe oshilonga shalo mokati ketu nde tu indilile yo ovo tave lipyakidile ngaha.



Mefano eli okudja kolulyo wa yuka kolumoshu, otu wete tate E. Heuer, omuhongi womOshomeva, omukulunhutumwa tate A. Eirola, omulongi T. Ndevaetela, omushamane E. Hynonen womovayebele kuKongo, tate I. Nhinda, omupashukilishitaingerki shOukwanyama nomulongi Reinhold Jesaja womOshomeva moshilonga shelundululo lOmbibeli mOshikwanyama.

TATE KALUNGA NA HAMBELELWE.

Ovakwetu ovaholike vongerki ei onghwaevangeli pa Luther yomOvambokavango, ondi na unene ehambelero linene kunye ava mwa li noshisho shokukwafa oshilonga shetumo noku shi ilikanena. Osho mwe shi ninga sha eta sha nga.

Ohandi mu shivifile ehafo eli eshi ovakwanghala 14 va tambulilwa meshasho liyapuki eti 6. 1. 65, efiku eli ola li liwa kuame shili. Navali vavali ovo va ava va shahswa nale va kolekwa eti 10. 1. 65. Paife otu na ovakriste movakwanghala vomu Kongo ve fike 27, manga onunona va ava va shashwa inava valulwa manga shashi inava shashwa manga aveshe, ovo ove li oinimbu yongerki yetu.

Ovo va shashwa va konakonwa komufitaongalo Josua Hanjango nokomuhongi E. Hynonen nokomukulunghuongalo Padelia Mokumangeni, ame yo nda kala po. Twa didilika ouhupi weshivo lavo, ndele twa didilika ehalo lavo linene okukala oukriste. Oshe tu hafifa shili. Vamwe vavo tava ka twikila ofikola younona, vamwe omekoleko tava yi neudo opo va longwe natango okushiva Jesus, Omukulili wavo.

Otwa kala novakwanghala vahapu ve fike pomafele 700 ile a koya po, ndele nande ongaha, oinima aishe ya pita nga nawa kewiliko lya Tate Kalunga. Ongudu ei kai li ashike mOlupandu, vamue ove li komapya manene Olupandu, ndele eemhumbwe davo adishe ota di pashukilwa pongulu yetumo pu Kongo.

Onghe ne nda hala ndi tye, Tate Kalunga na hambelero omudo wa ya. Ohandi mu indile nee hai ti... Diinineni unene osho mwe shi tameka, nge oilonga yomake molwetumo ile eilikaneno molwetumo ile okutumina sha oshilonga shetumo ile oku-

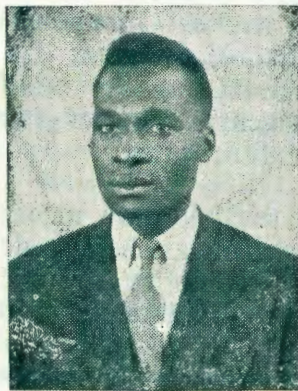
liyandja mwene metumo. Diinine oionga-lele omolwetumo, oshinima oshi hafifa ne, vakwe!

Ofye novayakuli vakwetu ohatu ti...
"Tate Kalunga na hambelero!"

Paulus Andreas

OSHIPANGO SHOMUWA

Indeni ano ka ningeni aantu ayehe na Nima ngoka ta tindi okuya momambo aalongwa yandje, noku ya shashela medhina lya Tate no lyOmwana no lyOmbepo Ondjapuki noku ya longa okudhiginina ayihe mbika nde mu lombwele. Ihe tala, ondi li pamwe nane omasiku agehe sigo ehulilo lyuuyuni.



*Omufitaongalo womu Angola
Sansao Datipo.*

OMUNDILO WEVANGELI OWA TEMA MU ANGOLA

Meenghundafana, omushamane Sansao Datipo, omufitaongalo womeongalo lokOshitota, olo paife omolwo-ulamba womeva ongerki ya tembuka ko kOshitota noya tungilwa pONAMAYAKA, P.K. Okafima, okwa ti kutya, okwa hafela oshilonga shaye. Okwa hokolola yo, nghe epangelo lOputu la yandja meti 7. 4. 1960 emanguluko, Evangeli li udifwe nombili. Okwa ti: "Oshilonga osha kala shi na oudjuu, ndele omundilo owa tema. Ohatu longo paife nombili nemanguluko".

Eshi a pulwa kombinga yomalaka okwa nyamukula: "Ohandi popi Oshiputu nOshimbudu". Tate Datipo okwa ka fudile po manga ku Walvis Bay omwedhi umwe noku li paife mondjila yokushuna koshilonga shaye mu Angola. Omushamane Datipo oku na onunona vane.

Pehulilo leenghundafana okwa ti: "Ovaleshi vOmwetu nava dimbulukwe: Eteyo mu Angola olinene ndele ovalongi ovanini. Indileni hano, Omwene a tume ovalongi meteyo laye".

OUNYUNI OTAU TONGO SHIKE

EFIKU LINENE LOKWINDILILA ODULA MU SUIDWES

Epangelo la Suidwes ola li la yandja eshiivifo mu Suidwes alishe nola shiva omaongalo aeshe omu Suidwes, a hangane nde a indilile odula. Epangelo ola indila yo eefikola, eengeshefa nosho tuu, adishe di kale da pata ovili oyo yeilikano, opo oonakulonga mo va mone omhito okulimwenenena meilikano ovili tuu oyo. Odula yovene oya indililwa mEtitano eti 19.3.1965.

Keembinga dimwe mu Suidwes odula oya loka nga, ndelene ku neehlele dinene natango mu Suidwes, odo inadi lokwa nande nawa nosha talwa osho oulumbu munene kovanhuhu nokoinamwenyo.

Odula inene ya landula efiku leilikano

Okwa hokololwa kutya, okudja tuu mEtitano omo odula ya indililwa, odula oya loka neenghono. Oya loka unene okuhovela mopeleka yOshomeva fiyo ku Karasburg. Efiku tuu olo odula ya hovela okuloka pOvenduka potundi 10, pOtjiwarongo ya hovela potundi 6 noku Gobabis, Upington na Malinda okwa lokwa yo fiku olo. Mowambo omwa lokwa yo nawa.

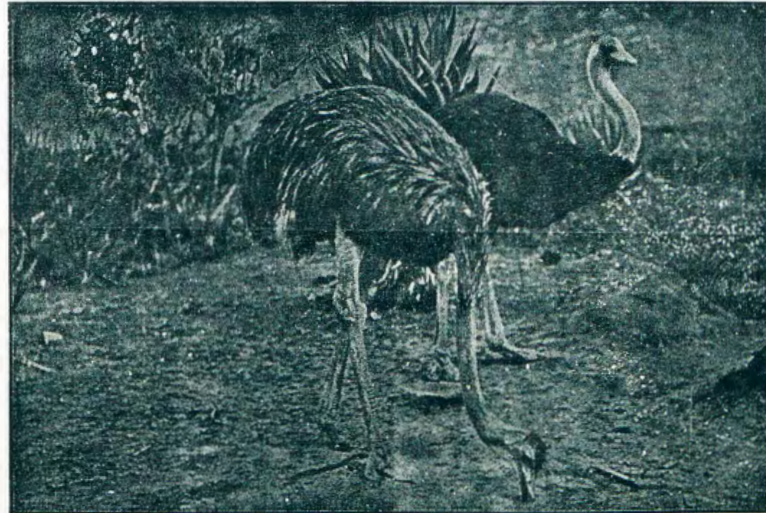
KALUNGA OYE HEKULU YOMAPONGO

Indileni nde tamu pewa, kongeni nde tamu mono, kongholeni nde tamu yeululwa. Osheshi ou ta indile ota pewa, ou ta kongo ota mono, ou ta konghola ota yeululwa!

OKADILA KEDINA "SWAEL" KO KU SUOMI OKE LITUWA PU UIS MU S. W. A.

Ongudu yOvandowishi ovanongonhu yokukonakona oudila (Duitse voelkundiges), oye litwa okadila kokofuta "swael" pomudingililo wOshiwakopo. Okadila oka hangwa nokalinga kokuulu novakonakoni ova dimbuluka kutya, okalinga oka tulilwa ko mu Suomi.

Oudila ava ohava tuka kombada yomafuta manene nde tava i kokule. Oudila vamwe vomu Suomi ohava tukile ku Israel.



Omho ei oya fa tai tu longo eendunge. Tu konakone, tu yolole, tu tale notu konge osho tashi tungu Ongerki, oshiwana na fye vene.

OMUHONA STOTT WA TSUMEB OKWA PANDA SUIDWES

Omuhona Charles E. Stott, omukulunhu womina ya Tsumeb, a kala paife konyala edula 10 mu Suidwes okwa hala okukalelela mo. Okwa ti kutya, onghalelo ya Suidwes oya fa konyala yomoshilongo shavo, Wyoming, mu Amerika.

Okwa fanekwa yo kutya, omuhona Stott ota ka pita mo moilonga yaye mu Junie. Ponhele yaye otape uya omuhona J.P. Ratledge.

OVAPANGELI VOMU SUIDWES OVO OOKAUME KETU, OSHO MATANZIMA A TI

Eshi eehamba nomalenga omu-Suidwes a li mu Transkei, moshilando Umtata, ova kundwa nawa komunisteli wotete wa Transkei, omushamane Kaiser Matanzima. Omuministeli okwa ti: "Fye ohatu mu tambula ngashi ookaume ketu notwa hala tu kwafafane mokukondjifa eemhepo dopondje odo twa hala tu kandule po."

Ponhele yeehamba nomalenga ohamba Uushona Shiimi okwa yandja komushamane Matanzima omaano okawato kanini ka hongwa moshiti. Matanzima okwa ti oku wete, okawato otaka holola oukaume pokati kovanhuhu vomu Suidwes na Transkei. Okwa ti, okawato otaka ka tuvikilwa mo museum ya Transkei.

AAKWANILWA NOMALENGA GOMU SUIDWES YA GALUKA

Omalenga naakwanilwa yomu Suid-

wes, mboka ya yile okutalela po Transkei, Natal na Transvaal, oya galukile nawa kevi lyawo.

"Otwa mono iinima yi ili no yi ili iiwanawa. Ekota lyuuyamba womu Transkei olyo: uuyamba womeya mboka ye na nuutoye wevi lyolyene kotsitwe. Evi lyawo olyo eyamba lyokumenitha nokukokitha iikunwa li vule lyetu," osho omusamane Elifas Shindondola, elenga lyomOndonga, a yamukula sho a pulwa.

ONDJALA MOKAVANGO OYU UKA KOMEHO

Okwa talwa kutya, nuumvo ete-vo mOkavango olyo eshona lyowala. Onke Epangelo lyokuhumitha komeho iinima yaaludhe olya tokola, mOkavango mu tsikilwe nga okututilwa ooshako dhiilya (graan). Ngashingeyi ya pewa nokuli ooshako 27,000.

Konyala omwedi kehe aantu 4,000 otaa kutwa miilonga yepangelo, opo yi imonene iimaliva yokulanda iipalutha.

IILONGA YEPANGELO OTAYI HUMU KOMEHO

Omuligu omunene ngoka tagu kutha omeya kOshakati nokweta kOndangua, ogwa thika ngashingeyi.

Omukanka gwokutulwa omiligu ogwa fulwa nokashina okuza kOshakati, gwa pita Onguediva sigo mOndangua nomiligu dha tulwa mo nokuli.

AALESHI TAA NYOLA

ETHIMBO OTALI ENDELELE

Omumwameme omuholike mu Kristus Jesus, ethimbo olini lye ende-lela? Ngele tatu tala omahokololo gookuku yonale, manga inaa adhika ku meme Suomi, okwa li ekugagano, eyugo, etiko lyombizi miinima yaafele. Ihe Kalunga sho a ontamene oshigwana she oshiholike, shi li koho yomilema, okwe shi tumine aasuomi, mboka ookuku ya li inaye ya dhiladhila.

Dhiladhila u tale oshinano shokuza momuvo ngu 1870 sho twa adhika kaasuomi sigo omomuvo ngu 1965. Sho to tala, opwa pita ngaa ethimbo lya gwana, tu kale niinima mbi tu na ngashingeyi? Awe, ndi shi ethimbo olye endelega?

Ipula ihe omukwetu ngu u na ositola, u na okamba kutya, ethimbo otali endelega ngini ku ngoye? Oosondaha ngapi wa pata ositola nenge okamba yoye, opo u ye komambo? Moshiketha shOmuwa owa tula mo lungapi. Ngele to yi komambo, Omuwa gwoye oho mu falele ngaa epeni? Nenge wa lunduluka u gandje oosenda 5?

Tseye, kutya, okupa Kalunga nuukukutu naye ote ku pe nuukukutu.

Omukwetu omuholike, okwende-ela kwethimbo otaku ku pula sha.

Aakweni mOmuwa,
W. J. Malima na N. Hailonga,
Rietfontein.

E. Viktor Nujoma, Box 23, Swakopmund, ota nyanyukilwa ongundumbimbeli yawo hayi gongala nawa nokufatululilathana oohapu dha Kalunga, e ta pula: Ngoye omukwetu ou li ngini nongundumbimbeli yeni? Oho gongala tu? Tu kongeni Omuwa manga ta monika.

S. Kambonde, Box 509, Walvis Bay, e tu pe tu leshe Mat. 11: 28, ota ti: Omulumentu omulunde i tedhulula, a galuka mokukala kwe okuwinayi nokwi igandja ku Jesus na Jesus okwa dhimi po oondjo dhe. Ngashingeyi ote ende ihe nondjila ya yela. Okwa li a loloka, ngashingeyi a mono evululuko. Kambonde ote tu halele atuhe, tu fe omulumentu ngo.

H. K. Iilonga, Windhoek, ota nyola ngeyi: Aamwameme aaholike, ohole ya tate Kalunga aluhe otayi tu kongo, ihe ote aakriste yongashingeyi otatu dhana notu na onyalo okuya koohapu dha Jesus. Jesus mwene ota ti: "One ngele tamu kala nokudhiginina oohapu dhandje, one aalorigwa yandje." Omuwa ote tu ithana noohapu dhomwenyo. Tu konge Jesus manga ku na ethimbo. Eimbilo 264.



Eva Frans, Okaku, ota kundu aaleshi yOmukwetu ta ti: Holeni iilonga iwanawa. Kaleni amuhe mwa tsonpango yimwe nokusilathana oshimpwiyu. Kaleni mu hole aamwatate mu na olukeno neifupipiko.

Simon Hedimbi, Windhoek, ote tu kumaida tu ha fye onye okulesha eendjovo da Kalunga. Nge tu na okafimbo, tu kufe Ombibeli nokulesha mouwike. Ta ti: „Nge to leshe, ino dimbwa okwindila, Kalunga e di ku fatululile. E ku pe eendunge, u di koneke nodi ningine mOmwenyo woye.

Di pwilikina yo nge tadi udifwa, opo to ningi omunelao”.

Filippus H. Nakanue, Ombelewa yofikola, Ondangua, ota kundile po ovanyanya ngidi vomambo noifo, ovalongi veefikola, ovafita vomaongalo, ovatumwa, ovatungi veengulu, ovahongi voipilangi, ovaimbifi, ovakulunhuongalo, ovawiliki vovanyasha, ovahakuli novayevangeliste, ovadiakoni novanailonga vakwao. Ote va kundu noku va pandula, omolwoilonga yavo iwa taitungu oshiwana shetu kolutu nokomwenyo. Eku-ndo lavo oli li mu 1 Kor. 15: 57-58. Ovakriste aveshes okwe va kunda yo na Hebr. 12: 12-15.

A. N. Iilonga, Transvaal, ota kundu aaleshi yOmukwetu noohapu dha Fil. 3: 20-21; Ps. 1: 1-5, e ta gwedha ko ta ti: Otandi halele aakriste yomegongalo lya Jesus Kristus eyambeko neputuko ewanawa, okwenda okupe mondjila ya Kristus nokusinda oombepo dhomutondi. Ota indile wo aagundjuka ye mu galikanene.

Jason Titus, Berg Aukas, ota kundu aaleshi yOmukwetu ngeyi: Kondja ekondjo ewanawa lyeitaalo, dhama omwenyo gwaluhe e ta hala tu leshe 1 Tim. 6: 11.

E. A. Malonde, Berg Aukas ota ti: Tu kaleni yamwe ngashi Omuwa ogumwe. Oye okwa si lumwe nokwa yumuka lumwe molwetu, tse tu ninge yamwe mu ye. Okwa si ke na oondjo molwetu e tu hupithe. Okwe tu pe tu leshe 1 Kor. 15: 1 - 6.

Andreas Shapota, Engela, ota kundu ovatumwa aveshes vomOwambo, kOkavango, kOushimba nokuSuomi ta ti: "Ava va kuna mokulila omahodi, vo otava teya nokunyakukwa pombada. Nokulila ota pa endwa okukuna ombuto, ndele otava aluka noimbale i yadi notava kuwilile," Eps. 126: 5-6.

Selma T. Amakali, Usakos, ota ti kaaleshi yOmukwetu ngeyi: Tse aagundjuka otwindji otatu ihepeke owala no tatu hepitha ethimbo ndjo lya kotha ondilo. Ota kunditha wo nEpsalmi 119: 9.

Sakaria Filmon, Box 700, Walvis Bay, ota ti: Oshike tatu ishundula, sho mokati ketu tamu holoka aluhe oontamanana, omakondjo nomadhipagathano? Mbika ayihe kayi shi ya Kristus. Jak. 4: 1-6.

J. J. Mwiyaale, ota popi oluthithiya Jesus moka twa pungulilwa omaliko agehe gokomwenyo no gokolutu. A hala tu leshe Rom. 26-32, moka tatu hololelwa eudho luyuyamba wa Jesus ku tse.

Samuel Kamulumbu, Uyoka, ota pandula Kalunga ke, sho a gamenwa omumvo 1964 nokwa thikithwa ishewe mu ngu-ka omupe nota kunditha na 2 Petr. 1: 3-11.

Shatimwene Ndilula, Walvisbaai, ote tu kumagidha, tu kondje ekondjo ewanawa lyeitaalo tse tu ka thike ishewe nawa ke-thikilo nomomvula ompe ndjoka tu uka.

Johannes Shikongo, Walvisbaai, ota yemata nokusa ohoni omolu omukalo omwinayi gwa holoka ngashingeyi mOwambo, mOvenduka nomOmbaye. Ngele omukintu nenge omulumentu ta ende awike uusiku, otashi vulika ta adhika kaamati aawambo nootaa ti: itaala ndje, ngele ito shi ningi oto si, nenge pe ndje iimaliva, ngele ku yi na oto si. Ano omukiintu ngoka ta tindi okwigandja nenge omulumentu ngoka ina adhika niimaliva, ota shi vulika to mono mpoka oshiponga. Shikongo ota yemata sho oshilongo tashi yonagulwa e te tu indile, tu hangane megalikano okugalikanena oshiponga shika.

Teodor J. Hamwalwa ota ti: Ofye ohatu lalakanene ehenokomesho nemanguluko lomounyuni ou. Twa hala tu kale nawa kedu eli. Omwene ota ti: Eulu nedu otali hulu po ndele eendjovo dange itadi hulu po. Hano apa pe fike ngehe hatu lalakanene ouwa wounyuni ou, opo napa fike yo okulalakanena kwetu omwenyo oo ihau hulu po. A hala yo tu leshe Ehololo 21: 1-8.

E. N. Mutilifa ote tu kundu na Rom. 5: 2 neimbilo mEhangano 9: 1-5. Ota wenda ko ta ti: Ofye ovelaelao nge tu holafane no hatu fimanekafana mOmwene. Nge hatu ende molwendo eli leitavelo tu li ovana va Kaiunga notu li kumwe. Ava tava endifwa kOmhepo, ovo ovana va Kalunga.

Silas Paulus, Box 124, Swakopmund ota indile aaleshi yOmukwetu, ya galikanene aakriste mboka ye li mUushimba. Oyendji ya fa yi itula miinima yaa na mutse nondungu. Ote tu kundu wo na Rom. 8: 12, 39.

G. S. Nandjabi, Box 108, Okahandja ota hokolola oshiponga shoshihauto sha lyata omuntu, a li a londa okafangufangu. Ota londola oonakushinga aveshes va lungame.

FINSE SENDINGDRUKKERY
OVAMBOLAND
ONIIPA