



## IILANDO INAYI ITEDHULULA

Mat. 11 : 20-24

Omuwa Jesus oku uvithile mii-lando mbiyaka ya Korasin na Betsaida nokulonga iilonga yoonkondo, ihe oyo ya tindi okwiitedhulula yi ethe iilonga iiwinayi. Onke Omuwa ota ti: Yayee, ngoye Korasin! Yayee, ngoye Betsaida, oshoka ando mu Tirus na Sidon mwa ningilwa iilonga mbika ando yi i tedhulula moompunda nomomotoko. Osho te yi lombwele kutya, Tirus na Sidon tayi ka kala ihwepo esiku lyepangulo.

Ano aakwetu ne, ngashi twa tala Omuwa ta lilile iilando mbiyaka osho tuu ote tu lilile momasiku ngaka gongashingeyi omolwashoka twa tindila miilonga yetu yuulunde. Uulunde oui? Ngashingeyi iikolitha yi indjipala, unene mOwambo noyo tayi vala eyonuuko. Mboka ye nomitse dha koka ya kuminwa unene ethimbo ndika, oshoka uuyuni wa lunduluka. Muuyuni wonale inaku kala iihuna yi thike mpa nando owo wa li u naapagani.

Ano ngashi mu shi lwete, tatu pangulweni kaapagani, osho tuu tatu ka pangulwa wo kiilando ya Tirus na Sidon. Tala mu Getsemane, tala maandja Hanas na Kaifas aasaseri ya kondeka Jesus. Tala ku Pilatus na, Herodes. Tala ku Golgata Jesus oti igidha: Sha longwa, sha pwa.

Lesha Mat. 28: 18-20. Otse otwa pewa oshindji tu vule Aatirus nAasidon, tu vule Aakorasin nAabetsaida. Onke omukwetu omunwi gwiikolitha nogwiipala, itedhulula, oshoka Omuwa ote ya mbala.

E. Shilongo



## Eemhepo da nyata tadi tewa mo

Luk. 4: 31-37.

Neemhepo da nyata ode shi itavela nokutya, Jesus okwe uya okuhanauna po oilonga yomuyelani, Jak. 2:19. Omhepo ya nyata oi na oudjuu okushakena na Jesus. Onghe keshe omunhu oku noumbada okushakena na Jesus, omolwomhepo ya nyata ei i li muye.

Moteksti yetu otamu tiwa, omhepo oya ingida, ndele inai mu ninga sha nande nande. Heno okushatwa pedu oshinima shi fifa ohoni. Ndele ne omukwetu, ino tila epangelo la Jesus li uye muove, osheshi itali ku nyo-no po.

Nande ngeno ondi shatwe pedu melinenepeko lange, ile molwisho lange, ile mouhalu wange, ile moipupulu yange nomoufukenuhu wange mokulihola kwange n. sh. t. Itashi etele nge oshiponga, shapu otashi mangulula nge ashike.

Paulus eshi a shatwa po, oteshi lifimanekela ashike, Oil. 9:4; Gal. 6:14.

Eveluko lomwenyo woye otali fimanekifa Omukulili woye.

Josua Hanjango

# Egumbo kehe nali lande Omukwetu!



Malitsa 1965

## OSHILONGA SHOINYOLWA YOUKRISTE

Oshilonga shoinyolwa youkriste ohatu dulu oku shi diladila momalupe ngashi aa atatu.

a) Oshilonga shimwe shoinyolwa youkriste osho okuyakula ongerki moshisho shayo shoshilonga sheudifo IEvangeli. Olupe eli ola hala okufikifila Jesus, ehupifo, ku keshe omunhu. Olupe eli ola hala okufikifa Jesus nepangelo laye meekomboni, meefitola, meekamba, momaongalelo keshe, kovakulukadi novashamane, movanyasha nomounona nomovapaani peenhele nomonghalelo keshe tava hangwa mo mefimbo lokukalamwenyo kwavo. Ngashi shi li, oshilonga shoinyolwa youkriste molupe eli opo shi wanife nawa elalakeneno lasho, otashi dulu okukala nomalupe mahapu oinyolwa.

b) Oshilonga shoinyolwa youkriste otashi kwafa okutunganga eitavelo nosho yo okukalamwenyo kwopahalo la Kalunga kwoilyo yongerki. Ohaku tiwa, ongerki ya Kristus oya pumbwa alushe okukula nokushituluka. Paife ope nomadidiliko mahapu taa holola nawa oshinima eshi. Molupe eli lohilonga shoinyolwa youkriste unene oinyolwa a) yokufimaneka Kalunga b) yomaindilo noyokutunganga eitavelo nokuudako Ombibeli osho nosho otai pumbiwa tete. Ovanyoli novalundululi voinyolwa otava pumbiwa. Paife eshi ovanhu tava katuka meehenokomesho, nena ongerki tai kondjo, i va kwafe, va mone ouyelele wa Kristus pamukalo o tau va udifa ko. Eyeletumbulo limwe ohali ti. "Ohaka telwa naashi haka li".

c) Olupe eli olutitatu la hala unene okupashula omesho omeni ovakriste, opo ngenge tava diladila ongerki yavo, ehupifo lavo, eehenokomesho loshiwana shavo, epangelo lavo osho nosho, ve shi ninge mouyelele wa dja kuKalunga. Va kale nomesho e shi okukufa ko omapeta haa di komutondi satana nokufiya po ehuku olo Kristus. Va kale hano hava pangelwa nokuwilikwa kOmhepo ya Kristus, okutala nokukondjifa osho tashi shekifa Kristus moshiwana ye Kristus a kale alushe hembadi meemwenyo davo.



## O M B I B E L I Y E T U

Mohole inene moku tu hola Kalunga, Omwene wetu, ote tu pukulu la moinima yomeumbo opo tu kale tu li ovaneumbo ovelao shili.

OVASHAMANE - Ndele ovalumenhu nye, holeni ovalikadi veni ngashi Kristus a kala e hole eongalo, ndele okwe li liyandjela, e li yapule, ndele e li yelifa mokulikosha nomeva eendjovo. Osho ovalumenhu nava kale ve hole ovalikadi ngashi ve hole olutu lwavo lwoovene. - Ef.5:25, 26,28. Ovalumenhu nye, holeni ovalikadi veni, ndele inamu va tulila ko omaonya. - Kol.3:19.

Ovalumenhu nye kaleni novalikadi neendunge, shashi vo ve nongone. Va fimanekeni shashi vo ve li ovafyuululi vonghenda yomwenyo pamwe na nye, mu ha kelelwe mokwiindila kweni. - 1Petr.3:7.

OVAKULUKADI - Osho yo ovalikadi nye, dulikeni kovalume-

Oinyolwa yetu tai pumbiwa i kale ya humbata eembuto domalupe aa atatu. Hano ngashi twa hala Kristus a ninge nongashi oye nokuli omuhupifi wa keshe olye, osho yo twa hala a ninge omupangeli waaveshe mu ashishe nge moikwaulu ile moinima yokombada yedu.

"Ondjovo oya ninga olutu nde tai kala mokati ketu."

L. M. Shemuvalula

nhu veni, opo ava ihava itavele, va itavelifwe koilonga yovalikadi ve he neendjovo, osho Sara a dulika kuAbraham, ndele e mu ifana omwene. Nye mu li ounona waye, ngenge ohamu longo ouwa, ndele itamu tila kuhanyenwa. - 1Petr.3:1-6.

OVAKULUNHU - Ovakulunhu nye, inamu hongaiifa ounona veni va handuke, ndelene va tekuleni nouteku muwa nomakumaido Omwene. - Ef.6:4; Mat.18:6.

Oye okwa fikamifa oshidimbulukifo muJakob; novaisrael e va pa omhango, ndele a lombwela ootate yetuna ve i udifile ounona wavo ovamati nokutya, oludalo lwavo otalu ya komesho, ounona ovamati ava otava dalwa ve i shiivifwe, ndele vo ya fikame yo oku li hepaululila ounona wavo. - Ps.78:5-6.

OUNONA - Ounona nye, dulikeni kovakulunhu veni mOmwene, osheshi eshi sha yuka. Fimaneka ho na nyoko, osho ne oshipango shote shi netimhaumbwilifo, ove u kale nawa nomwenyo mule kombada yedu. - Ef.6:1:3; Kol.3:20.

Omukwetu, Omhepo Iyapuki ota pula ngaha: Ou li peni? - Enyamukulo loye olilipi po?

Eilikano letu alushe nali tye: Omwene, longwe nge okulishiiva amewene omatauluko ange.

Sem M. Hipondoka

OMUBISOFI a tamekitha oshigongi nokulesha mEhol.1:1-20. Unene iitya ya hugunina moohapu ndhika ya kumike oshigongi omukumo.

Oshigongi sha taamba nenyanyu omusamane Pauli Laukkanen, "Ombeletanga" ngoka a li nale mEngela nokwa li omuwiliki gwomoshilonga shomaaguundjuka. Oye okwa yapulilwa oshilonga shuusita meti-24. 1. 1965 mu Soomi. Ngele wa hala oku mu mona, ota longo kUushimba negumbo lye oli li mOkahandja.

### OSHILONGA SHETUMO.

Omutonateli TIMOTEUS SHIPANGA a tamekitha oshigongi shoka noshipango shOmukulili: "Indeni ka ningeni aantu ayehe aalongwa yandje," Mat.28:19. Tse otatu ningi ngini, opo tu uvithile aantu ayehe evangeli? --- Otu na okuumba ongalo yetumo. Egongalo kehe oli nokulonga oshilongatamo moongamba dhalyo. "Okugandja oku nelago komeho gokutaamba," Iil.20:35. Ongerki yetu oya holoka po omolwokugandja kwootaali mboka taa longo oshilongatamo nomaliko gawo.

Omutonateli JASON AMAKUTUWA okwa tsikile: Jesus Kristus Oye omutumwa gwtango, a thigile aalanduli ye oshilonga shika. Oshilongatamo osho okutota omagongalo omape, osho tashi longwa niilonga yikaha, twaa kale owala tatu popi nokana tse itatu ningi sha. Aantu ayehe ya silwa ku Kristus. Otaa pumbwa ehupitho.

Omukuluntu omupe gwoskola yaayakuligongalo V. SIMOJOKI a kundu oshigongi. Omukuluntutumwa A. EIROLA: Oshilonga shotango shetumo osho euvitho lyevangeli, okukonga mboka ya shuna monima, okunyola iifo, okweenda momagumbo, okuputudha mboka taa vulu okukwatha moshilongatamo.

Omusita gwetumo PAULUS ANDREAS okwa hokolola kombinga yoshilonga she mu Nkongo. Omusita EFRAIM ANGULA a eta omakundo ga zi ku Soomi, unene okwa kumwa, oshilonga shetumo nkene shi li moomwenyo dhaantu notaye shi kwatha.

Meme IRJA REPO a hokolola oshilonga shuudiakoni. Aadiakonissalongwa mboka taa longo mokati ketu, oyo ye noshilonga oshinene shili.

## AASITAGONGALO TAA FUTU OMUTUMWA GUMWE MAAPAGANI

Osho oshigongi shaasita sha tokola mEngela 8—12. 2. 65.



Omumbisofi L. Auala nomusamane Pauli Laukkanen, ngoka a kala nale kEngela, ihe oku li ngashingeyi miilonga mokati kaamati ye li mehalakano kUushimba peha lyomusamane Marttunen, ngoka a yi mu Juni ku Soomi, otaa kundathanene iinima yomoshilonga yokUushimba.

Mesiku lya landula otwa ningilwa otundimbimbeli komusamane A. Eirola: Mt. 28: 16-20. Jesus a pewa oonkondo adhihe. Noonkondo ndhoka te dhi enditha iinima kombanda yeve, nando otu uvite olwindji, epangelo oli li meke lyomutondi. Ota ti: "Ondi li pamwe na ne sigo ehulilo lyuuyuni."

Omubisofi a hololele oshigongi oshikumitha sha ningilwa ongerki yetu kooitaali yokokule. Oya tumine ongerki yetu ooRanda lwopomayuvigatano, opo ku landwe ihauto yaatonatelingkerki. Iihauto ya landwa nokuli noya faathana naanaa. Shimwe tashi longithwa komutonateli Jasor Amakutuwa kuuninginino; oye e shiluku „Lahja Magano." Oshikwawo shili pu tate Ismael Nhinda nokwe shiluku „Shali." Nani omadhina oge faathana ishewe. Tate Efraim Angula a pewa oshihauto omagano kooitaal yomu Soomi, opo a wape okweenda momagongalo okuninga iiwike yOmbimbeli. Iikumitha ya tya ngaka iinene tayi longwa kaalongwa ya Jesus pethimbo ndika wo.

Pokati komutenya pwa tameke oshigongi "Ashram" tashi ti: evululuko koohapu dha Kalunga nomaga-

likano nomokwegululilathana oomwe nyo. Jesus te tu vululukitha nedhimo po lyoondjo.

Mohungi yongulohi twa tala oma fano (okino) ga ulukilwa komukuluntu gwoseminari yokOnguediva MIKKO IHAMAKI.

Mesiku etitatu lyoshigongi tate Efraim Angula e tu ningile otundimbimbeli. Ehuku lyayo: "Okukala nombili naantu ayehe." Rom. 12: 18. "Ombili ya Kalunga yi vule uunongo auhe," Fil. 4:7.

Omusitagongalo JASON HAUFIKU a eta omakundo ga zi mUushimba moka ta longo mokati kaamati yomehalakano. Unene a pandula oongerki oonkwawo (ngashi etumo lyaa-Reini, ongerki yoombulu nongerki yaadouisshi) nkene taye ya kwatha koombinga adhihe. Noshwo wo CDM mu Oranjemund lya pandulwa, oshoka a tumine ongerki yetu ooRanda 12 000 omolwokutungitha ondjugo yokumona iipalutha "Okefi." Okwa tokolwa, yi tungwe mOshakati (Elundu).

Esiku ndika ewanawa olya huli-thwa nUulalelo Uuyapuki, moka twa popithwa ku tatekulu DAVID SHIHEPO.

Tala kep. eti - 4.



Aasitagongalo konyala ayehe ya gongalele moshigongi shawo kEngela.

Pomathimbo gomafudho ya mono ompito okukundathana nawa nokutsaathana omukumo moshilonga shawo oshinene.

# OSHIKOLOLO SHEGUMBO

## OLUDALOLA EFIWA ?

Okontraka ngashi i li medu eli la Suidwes otai lalakanene vati okukwafa. Nghi shi shii ngenge tai kwafa aveshe. Ope na ongudu imwe tai hepa. Oohe novatekuli tava kala kokule noludalo lavo.

Evangeli la hala okumangela kumwe oonakukala aveshe meumbo nombili nonoukoshoki nonekwafafano. Evangeli la hala okuhomateka ovakulunhu va tekulile Kalunga noshiwana oludalo lavo.

Ndelene, kwafei nge, valeshi, mu fatululile nge, osho tashi ningwa ne ngahelipi! Fatululile nge nhumbi hatu shiiva okulalakanena oukumwe weumbo, pavangeli!

Shihepo.



### Kep. 3

Mesiku lya hugunina lyoshigongi otwa ningilwa otundimbibeli ku tatekulu VILHO KAULINGE. Joh. 6:38, "Onda tumwa ndi gwanithe ehala lya Tate." Itatu pulwa ehala lyetu, ihe olyanguka e tu ithana.

Moshigongi mwa popiwa unene omukalo omupe gwedhiginino lyomambo mokudhiginina iiniwe (iimaliwa) yongerki. Aapukululi yetu oyo: meme MAIJA TUUPAINEN na tate MATIAS NGIPANDULUA.

Pehulilo lyoshigongi aasita ya tokola ya fute omuntu gumwe ta kala moshilonga shetumo, niimaliwa tayi zi koondjambi dhawo yene. Opwa umbwa wo ongallo molwomizalo dhaasita aape taa ka yapulwa nuumvo, oya ningi ooRanda 37.79.

Tatekulu SAKEUS IIHUA a hulitha oshigongi newi lye lyuuladhi nokwe tu laleke nuuyamba.

Kalunga na hambelwe omolwoshilongatumo sha mono eha enene moomwenyo dhaalongeli ya Kalunga!

Titus Ngula.

*Omufitaongalo ABISAI SHEJAVALI ngashi ovaleshi vOmukwetu tave mu dimbulukwa, oku li pamwe nomukwao JOSIA MUFETI muSoomi notave lihongo vali muUniversiti notave tu dimbulukwa ofye tu li omu mOwambo. Abisai Shejavali okwe tu tumina paife ekundo lya tya ngaha:*

Nde linekela, omuhongi Taisto SAARINEN ta dimbulukiwa kOvawambo vahapu. Omwalikadi waye Eila Saarinen a kwafa Ovawambo vahapu moshipangelo mOnandjokwe nokOmbalanhu. Oye okwa hulifa oweenda waye kOmbalanhu 1954.

Omuhongi Saarinen ta kala moshilonga shEhanganotumo mongulu yetumo muHelsinki. Oshilonga shaye okudiladila nokuulika omalweendo ovatumwa novaudifi, tava ende alushe momaongalo a Soomi. Oye mwene ta kala po yo luhapu molweendo la tya ngaha.

Mefano eli hatu mono eumbo alishe lomuhongi Saarinen: oye mwene nomwalikadi waye, meme Hertta noshoyo ovana aveshe. Konima taku monika oshipala shomumati, oye oshiveli Erkki (a shanga matrika omudo wa ya). Komesho ya Erkki ku na Marjatta. Popepi nomushamane pu na Hilkka, nOvawambo ava: konima kwa fikama Päivi nokomesho yaye kwa kala omutumba Anna. Pu ina opu na oikwanambwiyu: okakadona Hertta nokamati Risto.

Taku landula oikwanambwiyu vali, ve li momake a Marjatta na Hilkka, ovo: okamati Markku, omufikamenwa womushamane Josia Mufeti, nokakadona Minna, omufikamenwa wange.

Kalunga nokwa nangeka noupu na eumbo eli. Neefiye da filwa nawa oshisho. Aveshe ve li po nawa notava hafele eumbo lavo noshilonga shavo.

Ovo aveshe ookaume kOvawambo. Fye Ovawambo aveshe tu li muSoomi, hatu yakulwa nawa meumbo eli. Ovo aveshe tava halele oshiwana shetu efimbo liwa li nelao. Oshiwana shi na Kalunga, oshi nelao.

---- Momalweendo etu twe lihonga okutala oupenda nohole yovaitaveli omolwetumo nokukuminwa yo ekwatafano lovakriste la kola muJesus Kristus. Momalweendo a tya ngaha hatu mono yo nokudimbulukwa Ovawambokavango, ove na ovanhu vahapu tave va dimbulukwa notave va indilile. Ovanyasha novakulupe, ovakulunhu nounona hava tumu omakundo mahapu kOwambo.

Onda hala okupula: Oku na tuu oshiwana hashi dimbulukiwa unene kovaSoomi shi dule oshiwana shetu?



# OSHIKOLOLO SHAAGUNDJUKA

## ONGUDI YOUPAANI

—“Ohamba inya tai landifa tuu eenhele domapya?— Nauyoma ta pula.

—“Ame ihai di mo mOukwaluudi,”— Nangula ta tongo.

—“Oye ta twala ko konima yefyo.”—

—“Oihuna.”— Namaria ta ti nokutula.

—“Oshilongo shaye shiwa unene. Oko kaku na vali okulila nokuvela. Kaku na oudu nefyo. Kaku na oita neenhamanana. Oko ku na ombili yaalusha.”—

—“Oshilongo osho shiwa oshi fike peni.”— Kashinini ta ti nokuhafa.

—“Ovakulupe otava efelwa mo tuu?”— Nekulu ta pula.

—“Aveshe ovo tava itavele Jesus Kristus, nounona yo vanini.”—

—“Ounona vanini ve fike opo itava shiiva okwiitavela,”— Nekulu ta ti nokuulika okaana ka li modikwa ya Nangula.

—“Ounona vovakriste ohava shashwa fimbo vanini, Jesus te va tambula meshasho notava ningi ngaha va Jesus nova Kalunga.”—

—“Owe shi shiiva ngahelipi? — Shiimi a pula.

—“Onde shi uda kovalongi ovatilyane naame mwene nde shi lesa yo membo eli,” — Oye a li a hala okukufa mondjato yaye Omahepaululo omOmbibeli, ndelene Shiimi okwe mu kelela a tya: “Oinima oyo ya nyanelwa nai kale mondjato yoye, inandi hala oku i mona.”—

—“Eendjovo dovatilyane oho di linekele tuu?” — Nekulu ta pula.

—“Heeno, ohandi di itavele, osheshi handi mono kutya, vovene ove di itavela yo.”—

—“Ove shi shiiva ngahelipi?”— Shiimi ta pula.

—“Vo vene ohava ilikana Kalunga nOmona, Omukulili wavo, onde shi mona luhapu. Osho yo ohava lesa embo eli nomambo mahapu makwao.”—

—“Kalunga koye okwe ku kwafa tuu?”— Nekulu ta pula.

—“Heeno oha kwafa nge paenghedi dihapu.”—

—“Ote ku etele tuu oshifima nenge to shi mu indile?”— Shiimi ta pula.

—“Oye ha itavele kutya, epya lange otali dala nawa ile ota pe nge oilonga nohandi futwa ondjabi yange. Osho ta pe nge oikulya yange.”—

—“Kalunga koye owe mu mona tuu?”— Nekulu tapula.



—“Inandi mu mona nomesho ange nde iha monika nokuli nomesho aa okomutwe, ndelene meni momwenyo wange ondi udite oupopepi waye nandi shi shii kutya, oku li puame.”—

—“Oomeekulu ove mu dule, osheshi efiku limwe ova mona Kalunga nokuli, oye okwa li moivale nde te fininike ve mu pe oikulya,” — hahahaa, osho Shiimi ta yolo.

—“Osho ashisho omadiladilo avo vene. Kashiimba vovene ova li ve kwe-tiwe kondjala nova kendabala ngaha okulikongela oikulya.”—

—“Kashiimba ove oto likongele sha yo paife,” — Shiimi ta tongo nokudina.

—“Omolwashike ndi nokuninga ngaha? Osho handi likola, osho okuyolwa nokudinwa. Oinima ei kai shi okulongi-fwa ngaha, omunhu e likongele nayo eliko.”—

—“Ove ku longa nawa, Shiinda. E-kwafo loye tali futwa ngahelipi?”— Shiimi ta pula.

—“Ohai longo onunona moskola nohai mono oikulya noikutu, osho ashike.”—

—“Hambaa, ito pewa nani eengobe, oikutu aike, oyo ya fa yovalandifi vovapika. Tambula omakaya aa molwomahepaululo oye. Nde a pewa manini kohamba, eshi ndei hepaululila kutya, ohandi ka mona omweenda a dja kokule.”— Ndi shi, owa ile nga kouhamba okulihololela?”—

—“Heeno, onda ile ko, ndelene, o-

hamba yovene inandi i hanga peumbo.”—

—“Heeno, osho naanaa. Owe tu hepaululila oiyolifa onguloshi ei. Onda uda omakoto oilumbu nondi i shi kutya, oishike. Ovo ovanhu ve he shi kulinekelwa. Ame ihandi ve linekele. Ngeno ove owa li ino va itavela, ngeno onawa. Osho naanaa.”—

—“Ovahongi nde va pwilikina nonde va mona moule weedula dihapu nondi shi shii kutya, ove li po ve tu hole fye ovalaule.”—

—“Ove shi kupopya, hahahaa, moshinima osho ove fike pufye.”—

—“Ame ohandi kala omukriste fiyo kefyo lange, osho oshili, omukwetu.”—

—“Ove wa ninga omulongwalela wavo. Konyala wa ninga nge yo omukriste, hahahaa,”— Shiimi ta yolo.

—“Osho tuu osho nda hala nohai shi teelee, omukwetu.”—

—“Fye ihatu hovele nowina okuhandukifa eemhepo detu vene. Otu noupyakadi nokuli nado. Hanga onde ku taataa nokuli meumbo lange neemhepo doye. Owa tonga naanaa kutya, owe di eta oku.”—

—“Keshe apa Jesus Kristus te uya ota eta po alushe epuniko. Oye omunaenghono e dule eemhepo adisho dii.”—

—“Shamha tuu itapa holoka ekondjo pokati keemhepo meumbo lange. Ove omulumenhu to tilika.

—“Ahowe omukwetu. Kala u shi shii, eemhepo dii, odo oipupulu yeendudu.”—

—“Mutika okanya koye. Openi wa hanga omukumo u fike opo? Otashi dulika nokuli, ovatondi ve tu tava hovele okutaataa nge omolwetalepo loye.”—

—“Ahowe omukwetu, ino tila. Kape noshiponga sha sha.”—

—“Otashi dulika ngahelipi kutya, ove Shiinda, wa li nale omulumenhu omunandunge, wa ya ngaha onghwengu nowa itavela oilumbu inya ye ku pukifa ngaha. Oshinima osho ohandi ke shi kuminwa fiyo okefyo lange.”—

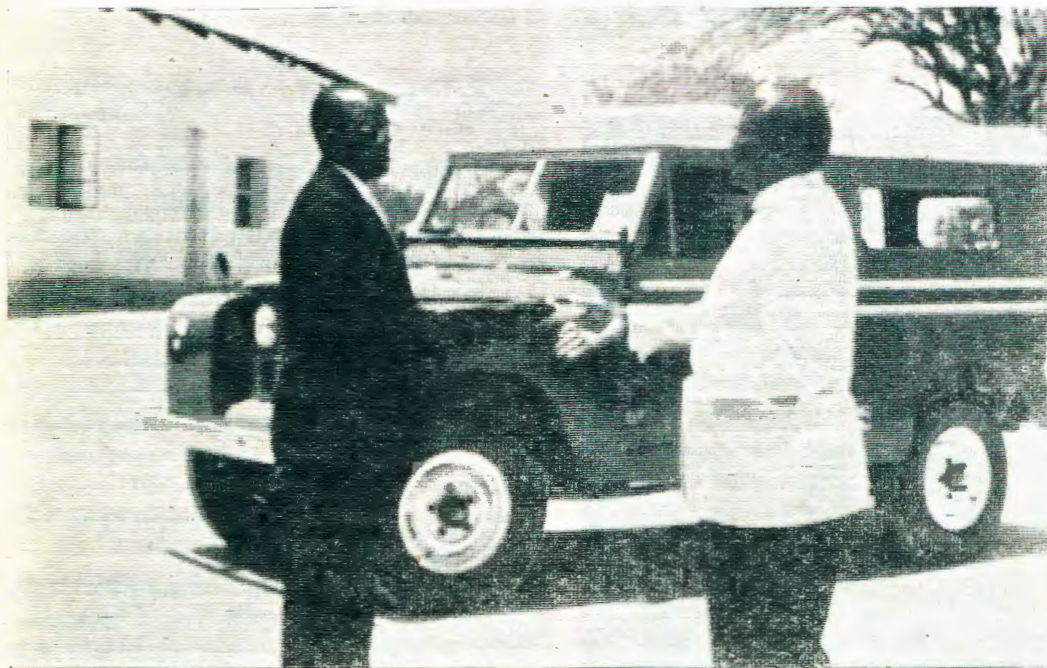
—“Onda nyengwa okufatula oinima aishe naanaa nefimbo itali wana nokuli ndi shi ninge monguloshi imwe. Ndelene, onda hala kutya, ohamba yeni nai tambule ovahongi va tule moshilongo eshi — opo nye mu mone omhito okuuda kuvo vene osho tave shi tongo.”—

Taku twikilwa . . . .

## TAAMBENI OMAGANO

Mefano ndika otatu mono omubisofi **L. Auala**, ngoka peha lyOngongahangano yaakwaluteli ta gandja komusamane **Jason Amakutuwa**, omutonatelishitayingerki shuuninginino, oshipatululo shoshihauto shoka oshipe „Lahja Magano,” e shi pewa e shi longithe.

Omusamane **Ismael Nhinda**, omutonatelishitayingerki shUukwanyama, okwa pewa wo ndi shi she sha fa naana shoka sha tate Jason. Ai, ayihe otayi ti koni.



### “ONDE SHI PEWA KOMUWA.”

Aalongwa yandje amuhe nokooitaali amuhe mu li kombanda yevi, otandi mu kundu. Otandi mu halele okutambula oshilongo shegulu nosha Kristus. Kape na ngoka ta vulu okupita mo mu sho ngele kee na Kristus. Kape na eyooloko lyopaludhi nenge lyopaukwatya nopankalo kokutya: na kale omukwaniilwa nenge omuthigona, omusita nenge omulongi, omuyamba nenge omukwankala, omuluudhe nenge omutiligane, omumbisofi nenge omuntu gwowala, ita piti mo ngele kee na Kristus.

One aalongwa yandje ngashi mu li muuninginino auhe, ngele pe na ngoka twa ningathana, ngame onda dhima po adhihe.

Ngoka e na Kristus oku vule aannankondo ayehe kombanda yevi alihe momavi agehe.

Tandi hulitha nekundo kaanashilonga ayehe Ps. 134.

### OMATSEYIHTILO:

Manga omulongi nguka Lydia Magano Urho ta ehama nokwa kanitha oonkondo adhihe dholutu okwiindile ndje ndi mu nyolele ekundo lye kaantu ayehe ngashi ya tumbulwa mpaka. Okwa thiminikwa kombepo oku shi ninga. Ano okwe shi pewa kOmuwa. Paife okwa kola kashona.

Peha lye,

Sebulon Ekandjo.

### ETHIGATHANO LYETU ENENE OLYA TOKOKA

olyokuhalitha iifo yOmukwetu.

#### I Omusitagongalo **Metusalem Shilongo**,

Oranjemund, Oye a pewa epandulo lyotango, oRadio. A landitha po iifo 47 muOranyemund na 48 mOwambo, kumwe 95.

II Omunyoleli gwomoshinyanga shegongalo **Joel Kalipi**, Elim, epandulo etiyali olye, ano R15.00. Iifo ye 49.

#### III Omuevangeliste **Andreas Namueja**,

Endola, oku li ngashingeyi moskola yelongekidho lyaa-sitalongwa kOtjimbingwe, epandulo etitatu olye, ano R10.00. Iifo ye 41.

(Aantu yawo ayehe taa taamba iifo iyaali momwedhi, nayihe oya futwa wo.)

Otatu pandula aahalithi mboka aadhiginini nooyakwawo ye ya landula, ihe sho ya kala konima yawo, inaa pewa sha. -- Kalunga ne mu gwedhele ko enyanyu epe mesiku kehe moshilonga sheni!



Katu nefano lyomusamane **Metusalem Shilongo** (pamwe tatu ke li pewa komeho). Onkee ano omuwiliki gwoshilonga shokUushimba, omusamane **Pauli Laukkanen** ta taamba oRadio ndjoka-e yi thikithe komusamane **M. Shilongo**. Omwene gwoshinyanyangidho **Aarne Hartikainen** ta gandja oRadio ndjoka mefano ndika komusamane **Laukkanen**.

# OUNYUNI OTAU TONGO SHIKE

## OUWA TAU DI KOMUNGHULO WEFUTA

Ehangano lipe ola totwa po opo li yandje omamanya a fimana komunghulo. Ehangano eli otali ka mona omhito momalandifo oinima yoshiwana.

Omukulunhu womahangano a tya ngaha muWindhoek oha mono omapulo mawa pondje yoshilongo omolwomamanya aa a fimana nomyongwa. Ehangano eli ola mbestelwa kuNdowishilanda neeRanda 1,000, na Italia okwa landa eeRanda di dule 800 omamanya tuu oo muSuidwes.

Mnr Preiss ota yolo pokati kanya molwehangano eli.

## OUKUKUTU WA SUID -AFRIKA

Suidwes alishe oli noukukutu, osho omukulunhu wookomitee Mnr. Mita Rawo, omukulunhu womapya a popya. Okwa ti yo: Omolwoukukutu ou oitukulwa ya Suidwes oi na natanngo eekamba. Oukukutu wokoumbuwanhu wa ninga nokuli oshiponga u dule womudo 1914. Pa diladilwa nokuli kutya oukukutu ou tau hwinike oilonga yeembulu, osheshi momudo 1963 okwa lokwa oshikungulu shine neefalama dimwe oda teka po.

## ENYAMUKULO LA S.A. KOSHIONGALELE SHOUNYUNI

MuJanuali otaku ka udika mo-shoongalele shounyuni nghe Liberia na Etiopia va diladilila Suid-Afrika molwaSuidwes.

## OPOOSHA YA PILA MESHINA

Pokrimesa opoosha oya hanaukila popepi na Holoog. Meshina omwa li mu yadi oipakete nopoosha yeeshako. Ekonakono eli ola hovelwa pu talwe eshi sha tandavelifa oshiponga eshi. Nepyo eli otali yelekwa naanaa la fa eli loshitukulwa sha Grootfontein meti 4 la Desemba.

Opoosha yeeshako 64 noipakete ya Krimesa nomitwalo dovapashiyoni da pila mo. Kalunga ota hambelwa eshi inamu pila nande umwe.



Mefano tatu mono omusamane Andersen nefolo na E. Hatakka.

Omukonsuli omusuomi Mnr. Jörgen Andersen nefolo Andersen ya talelepo Owambo nOkavango okuza 21 sigo 26 lya Febuluali. Oyo ya ningi etalelo po ndika lyotango pamwe nomutumwa gwEhangano lyoRadio yokuSuomi Mnr. Erkki Hatakka.

Omukonsuli Andersen oye omupopili gwoshilongo shaaSuomi. Ota popile iinima ya zi ku Suomi notai landithwa mu Suid Afrika ngashi unene ombapila yomambo noyiifo n. sh. t. Noshwo ta popile Aasuomi ye li mu Suid Afrika nomu Suidwes Afrika.

Mnr. Erkki Hatakka a ningi etalelopo lye nelalakaneno lyokumona iinima nkene yi li mu Suid Afrika nomu Suidwes Afrika. Oye omukwanezimo gwomusamane Eero Hatakka na meme Kyllikki Hatakka mboka ya longo kOnguediva. Oohe oyo aamwayina.

## OYIIMBO YOMUSUIDWES OTAI KWATWA

MuMai wodula ei, muSuidwes otamu ke uya ovanongonhu ovaamerika, omushamane Crena de long nomukulukadi waye, tave uya okukwata eendaka noyiimbo yovalaula. Unene vati otava kwata eendaka odo hadi holoka unene poilonga, ngashi naana omulaule e hole nge ta longo ye ta imbi ile ta shiki omwilwa. Vati otava ka kwata eendaka dovambanhu ovo tava longo kodalate mokomboni mOvenduka, mOshomeva nokOlange.

MuAroab omwa fya eedi 31,000 neengobe 700 kondjala. Omunaimuna umwe okwa yandja oikulya i fike peetona 120 mefimbo olo okudja kuApilili fiyo Desemba.

Ovanaimuna aveshe ova fya oshisho opo va kufe po oluhepo eli li fike apa. Omwiidi aushe owa fya po komutenya. Ovo ova tila unene omolwoukwatya tau nyonauka diva ngeenge inava mona ekwafo.

## KONGO KALI NA OMBILI

Brazzaville. - Okangudu-shiwana oka tokola muJanuali kutya, muLeopoldstad kamu na eenhundafana da sha kombinga yombili yoshiwana fimbo Moise Tshombe nomuprestent Kasarubu tava pangele.

Okangudu ka ongalele mouhamba wa Brazzaville oka ti kutya, eenhamanana depangelo otadi eta ashike oita nefindano li na okuka monika.

## ONDADO YOITI

Oshitukulwa shomiti sha Runtu mOkavango shi fike pu 3,137 kub. vt. osha landwa po omolwomiti. Omiti edi otadi ka yandja oipilangi kofabillika ipe mOwambo.

## ESHIVO LA JOHNSON

President L. Johnson okwa shiva omuleli wa Rusia a ye kuAmerika. Eshivo eli ola fika nawa kuRusia. Pres. Johnson kwa ti ota talele po neudo Europa na Suid-Amerika.

## AALESHI TAA NYOLA

Wilbard Mukuanjama, Etunda, ota nyanyukilwa omakumagidho omawanawa he ga pewa mOmukwetu. Ta kunditha noohapu dha 2Tim.3:13-17.

Pestadius Oskar, Otavi, ota kundu ovaleshi vOmukwetu na Mat.18:1-21, Ps. 5:5.

Johannes Petrus ta kundile po ovakriste avesheshe vongerki yetu needjovo di li mu 1Petr.5:6-7 neimbilo 464.

F. I. Moongo, Oniipa, ta yematele mboka taa nu noonkondo notaa dhipagathana. Omaiuvo gawo ga sa nokaku nohenda. Ota ti: Tu indileni ku Kalunga e tu pe ombepo yeshitululo, opo tu wape okweenda nondjila yomwenyo gwa aluhe.

Selma Hamutenja, Ondobe, ta kundile po ovaleshi vOmukwetu nEps.67, neimbilo 235.

M. Nghitukua, Ondobe, ta kundifile po avesheshe neendjovo da 1Tim.2:1-5 neimbilo 180.

M. Haushona, Ondobe, ota ti: Omuntodi okuhole alushe apa pa ongala ovahungwa avesheshe va kale va kotokela oumbudi nolwaambo. Ekundo laye Luk.6:27-38; Oil.2:42-47 nomaimbilo 276, 524.

Nangula Nhinda, Ondobe, ota yandje omapiya etumo momake ovaleshi vOmukwetu noovakriste avesheshe ve a dimbulukwe koshipala sha Tate Kalunga.

Andreas Alfeus, Westonaria, ta hepaulula etalelopo lavo mokomboni nonghee va talalekwa keemwenyo mukupwilikina eendjovo da Kalunga.

Oku niinima itatu omuntu ta pumbwa kehe esiku i imonene okathimbo oyo:

- a) okulesha Ombimbeli
- b) okugalikana
- c) okugalikanena

Iinima mbika omuntu te yi dhi-ladhila muuwike manga a mwena.

Tu ikongeleni ethimbo mu yo, oshoka Kalunga ote yi tu pula.

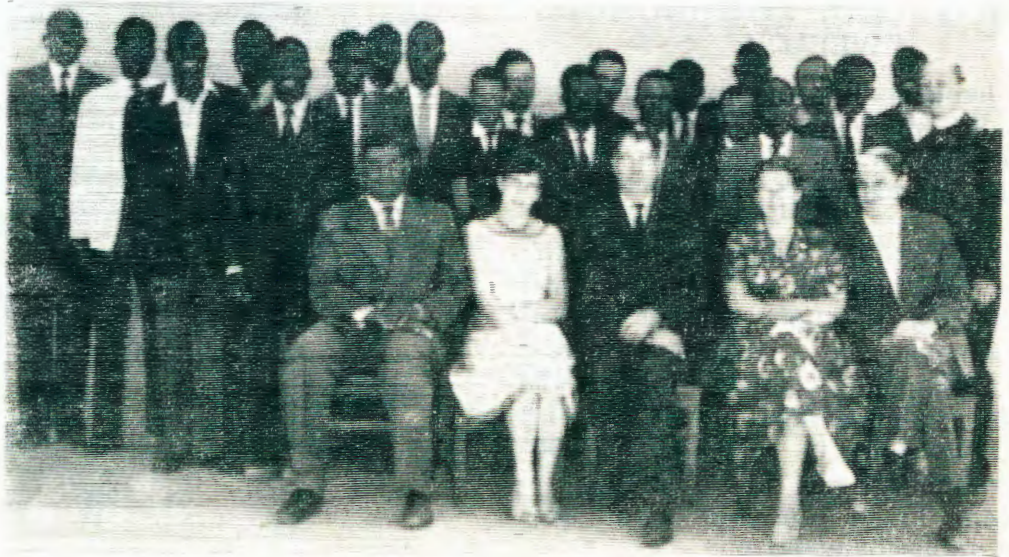
Ev. P. Pilatus, Windhoek, ota ti: Omukwetu Jason Taapopi a mana oondjenda dhe kombanda yevi moshipangelo sha Windhoek.

Oye ina tila nando okuza mo muuyuni. Okwa tumbula pehulilo lye oohapu dha Jes.38:1.

Lesiana Ndjulua, Omundaungilo, ota hambelele Kalunga eshi e mu pa omhito okukala moskola nokwa hala okuyandja ovalongi vaye meke lOmwene.

Lasarus Hiuilepo, Kolmanskop, ota ti: Inatu danaukeni noulunde, osheshi ondjabi yefyo. Tu diinineni omhango ya Kalunga opo e tu kolekele moudinini waye nge hatu ka tembuka mounyuni omu.

W. K. Joel, Swakopumud, ota ti: Omuleshi Omukwetu, natu egululile Omuwa Jesus oomwenyo dhету opo e ye a kale mo.



Mefano eli ovafitalongwa voku Paulinum momudo 1964, komesho ovalongi, konima ovalongwa.

## OVATALELI OVE NOSHISHO NEONGALO LAVO.

Eongalo lomOlindili ola li la ongala nawa mongerki. Konima yelongelokalunga ovataleli va yandja omakundilo keongalo lavo.

Tatekulu Evard Mukapuli a lesa 1Kor. 13: 1-15, nde ta ti: Otu hole oinima aisheshe yomounyuni, osheshi twe li kwatelela momapeta omi nomomwiidi. Ndele ohole ei tai popiwa apa otwe i kwatelela momuti womushiyakano pamhepo, shi holole otu li molute Kristus Jesus.

Naftal Kangue (okwa longifwa nale keongalo eli) a lesa Joh. 3:1-15 nokwa ti: Nikodemus okwa kala moshilonga eshi nale, omukulu musho. Ngashi a li omukulu moilonga, osho a kala omukulu mounhu waye aushe womeni ina dalululwa. Oukulu woshilonga natu u efe tu lalakanene oupe wedalululo.

Meme Saima Kanjaganje a imba ta ti: "Nge twa thiki pomunkulo gwegulu mpeya, omahodhi nelilo ga ya. Etha oMuwa ndi kale mongundu yaambo, ye ku kongela iilya ya sha."

Teofilus Joel a lesa muJak. 1; 22-25, ndele ta ti: Onawa okupwilikina eudifo, ndele eshi shi dule aisheshe okutambula Kristus.

Gustaf Kustaa a lesa Mat. 28: 18-22, ndele a tya: Ovamwange ovaholike, oshipango eshi otashi mu ifana mu ye metumo. Tatekulu Gustaf eshi a li e hole etumo e shi tya nokutilashi omahodi.

Ev. Moses Amupanda okwa hambelele Kalunga molwoinima ei aisheshe.

Kwa imbiwa ketanga lovamati vomohotela ya Kaaps. Omaimbilo avo a hekeleka congalo. Twa hulifa neimbilo 445.

Ev. M. Hauuanga, Luderitz.

Simeon Jona, Cape Town, ota shiivifa ovaleshi vOmukwetu, efyo la Epafras Ngonjo, a fila kuCairo muEgipti. Jona ina shiiva Epafras ou, ndele a mona ashike eshiivifilo la dja kuCairo nokwa diladilwa, Epafras shiimba okwa dile muSuidwes, pamwe oye Omuwambo. Ou to lesa pamwe u mu shii, Jona osho a shiivifa.

Eli olo epukulu'lo kunye ovamati, ovo mwa hwama mokushitilila nounyuni. Kendabalenii tuu okukonga eembapila domaongalo eni nye mu ende meendjila diwa. Opo ngenge tamu ka fila koilongo, ovadali novakweni avesheshe ve shi ude nawa.

Filemon Kashima, Tsumeb, ota kundile po ovaleshi vOmukwetu neendjovo da Mat.6:19;7:21; Omayelet.28:13; Joh.16:33; Ef.6:1-3.

Shitutuma Namupala, Walvisbaai, ota ti: Efa olwaambo, olwisho, ondumbo, efupa noipupulu, oyo efina loinima aisheshe. Efa oukaume wounyuni u shikule Kristus.

Josef Filippus, Windhoek, ta kundu aagundjuka ayehe nEhololo 5-7.

Johannes Eliakim, Swakopmund, ota yematele aaniimpaga oyendji ye li mokati ketu notaa yono po egongalo mukupukitha aantu. Taa ti: Tu indileni oonkondo kOmuwa e tu kolekele eitaalo lyetu.

S. Shiguedha, Walvisbaai, ota hambelele Kalunga sho ta vulu okuhila aagudjuka nomaimbilo.

Erastus Ndjukuma, Otavi, ta kundu aaleshi yOmukwetu na Rom.15:14-19; Mat. 4:17.

Omakunditho ga Johannes Hidipo, Tsumeb, ga kuthwa mu 1Kor.9:24; 2Mose. 33:11.

FINSE SENDINGDRUKKERY  
OVAMBOLAND  
ONIIPA