

# OMUKWETU



No 4

FEBULUALI

1965

“Jesus ine uya okulongelwa, ahowe okulongela tuu nokuyandja omwenyo waye ekulilo la vahapu.”

Meindilo lovana va Sembedeus ova hala oku li longela, ovo va indile Jesus eva pe va kale omutumba umwe kolulyo umwe kolumosho. “Omuho-ngi otwa hala u itavele eindilo letu.”

Enyamukulo lya Jesus okwa tya: “Kamu shi shi eshi tamu indile.”

Jesus a pula unene ovahongwa ngeenge tava dulu tuu okuenda nondjila yomahepeko ovalanduli va ye.

Okukala omutumba haye te ku va pe, ndele okwa ava ve shi longekidilwa. Jesus okwa pukulula nawa ovahongwa ovo va indila osho kave shi shii ngashi Omwene e va pa enyamukulo. Jesus ina handuka eshi a indilwa kuvo okukala omutumba mefimano la ye. Okwe va pukulula ngashi e wete kave shii sha muvo vene.

Eindilo eli kali shi kushikulwa, osheshi ova hala okuhakana oipundi yokomesho ndele okwiindila okwo nondjila yelihupipiko. Okutula ehalo la Jesus komesho ngashi ya ninga mu-Getsemane. Eshi osho oshihopaelelwa twe shi ifanenwa okweenda nondjila yelihupipiko tai tu twala mefimano. Fil. 2: 5-10.

Oshoyo mEps. 84 tamu popiwa okukala omutumba moluvanda lwa Jehova ku dule okukala momatwali ovalunde. Elao olinene eshi a itavelelwa okukala moluvanda. MuJesus ohatu i meumbo la Jehova. Joh. 14: 2-4; Mark. 10: 43.

Ondjila ei oyo nondjila tai tu twala mefimano la Jesus. Oyo te i popi muMat. 7: 13. Apa pwa holoka nokuli eendjila mbali opo omunhu a hoolole ei ta ende na yo.

Okutula ehalo komesho ngashi



*Omwene na ame yo nda hala okukala puove, mouhamba woye wa alushe*

ovana va Sembedeus oshi li yo mokati kovvanhu. Keshe umwe a halela omumwaina oilonga iwa. Ashike inatu kanifeni Jesus melilongelo letu vene. Jesus ta ti: “Omona womunhu okwe ya okulongela nokuyandjela vahapu omwenyo waye.”

Okweenda nondjila ya finana okwo efilonghenda la Kalunga, osheshi oyo otai yandje odjuulufi kovana va Kalunga, ndele tai va pe eteelelo lOmwene. Opo nee ashishe tave shi longo mOmwene. Otava udifile ovanhu eteelelo lOmwene li li popepi.

Pandjila yelihupipiko Jesus ta kaleke okaana omufika mokati kovahon-gwa, opo va fe ounona va ye mou-

## ONDJILA YEYAMBO YOHOLE YA KALUNGA

Mark. 10: 35-45

hamba weulu.

Hano tu li hongeni yo okweenda nondjila ya finana oyo tai tu fikifa mo mouhamba ou wa halika kovana va Sembedeus, ovo va li va itavela shili kutya, Jesus Ohamba nouhamba waye itau hulu po fiyo alushe.

Ouhamba womeulu owo oshiholekwa shinene shelao noshohole nondjila ya Kalunga kovana va ye mounyuni ou. Ovana vouhamba weulu ove shi hololelwa mokuitavela Jesus. Ovanelao ava tava udifa evangeli no-tave li udifilwa, ndele tali ningi ounyenye u dule omaunyenye aeshe. Eimbilo 627.

W. Kaulinge



Febuluali 1965

## OMBIBELI MOSHIKWANYAMA

Movaleshi vOmwukwetu omu na vahapu ovo tava pula: Ombibeli yOshikwanyama oya kanena peni? Tatekulu Björklund okwa mana oshilonga shaye shelundulo layo nokuli pehulilo lomudo 1961 nokwa ya kuSuomi. Ndele inai holoka natango. Oi li peni mbela?

ETESTAMENDI LIPE NOMAP-SALMI okwa tuminwa kOmbibelihangano la Brittanje noOilongo pehulilo lomudo 1961. Ndele manga ehanganano linya inali nyanyangida omambo omOmbibeli otali a konakonwa nawa. Olo li nomaufu a kola mekonakono eli.

Eufo lotete lokukonakona elundululo lipe olo tuu olo kutya, tete embo limwe alike lomOmbibeli tali nyanyangidwa palundululo lipe opo li leshwe nawa kovakriste vahapu. Onghe Oilonga yovayapostoli la holoka momudo 1960. Mepandja lotete mwa shangwa: "Die teks is geod-gekeur deur die Britse en Buitelandse Bybelgenootskap vir voorlopige uitgawe." (otekisti ya itavelwa kOmbibelihangano la Brittanje noOilongo opo i longifwe manga). Paife Oilonga yovayapostoli ola longifwa omido edi kovalishi nokovanongekwa vomOukwanyama. Omwa konakonwa yo ovanhu ngee va uda ko elaka lomulo. Mwa dimbulukiwa ngaa omawapaleko amwe oo e shi ku ningwa membo eli nomomambo amwe omOmbibeli. Pamwe taku pumbiwa okunyanyangidwa natango embo limwe lomEtestamendi Lipe li leshululwe kovakriste, manga Etestamendi Lipe noMapsalmi inaa holoka.

Eufo etivali manga omambo omOmbibeli inaa nyanyangidwa olo tuu olo kutya, ova konakoni vomOmbibelihangano vokuLondoni tava konakona nawa otekisti. Ovakonakoni venya nande kave shii elaka lOshikwanyama ova ikilila okukonakona nawa omalundululo omilongo nomilongo omomalaka mahapu. Ohava tale eeverse dimwe domEtesta-

mendi Lipe da kufwa mEtestamendi Likulu nohava dimbulukwa omayooloko nande motekisti yomalaka oovene omOmbibeli kamu neyooloko, ngashi:

Oil.1:20..... umwe na tambule oufitalonga vaye.

Eps.109:8..... noulenga waye nau pewe umwe.

Okwa pula: Itashi dulika okufaafanifa omatumbulo aa? Ile:

1Petr.2:7..... emanya olo la ekelwashi kovatungi.....

Eps.118:22. Emana, eli la li la ekelwashi kovatungi. Ohava lombwe-

le: Tu kwafeni mu konge odjila imwe yokutumbula omatumbulo aa.

Mombilive imwe ya dja kuLondon omwa li mu nomapulo a tya ngaha

34. Mooyongalele yokangudulongekido omapulo a tya ngaha taa konakonwa notaa nyamukulwa. Kashi fi

oshilonga shipu.

Eufo etitatu lOmbibelihangano olo tuu olo kutya, Ombibeli tai nyanyangidwa p a m u k a l o w o k u s h a -

n g a w a kolekwa nohau longifwa momambo eefikola, osheshi Ombibel ioyo

embo linene leefikola li dule aeshe. Eufo eli lOmbibelihangano li noku-

longifwa yo mOmbibeli yOshikwanyama. Ombibelihangano tai tee-

lele nokuli enyamukulo lokangudulongekido kombinga yoshinima eshi nosho

yo kombinga yeenomola 6-9. Ombibeli-

belihanganano inai hokwa okunyanyangida ngashi melundululo lopaife mwa

shangwa "eti-6" ile "omido omilongo ine nomido 6".

ETESTAMENDI LIKULU inali tuminwa natango kuLondon, osheshi

okuleshululwa kwalo taku twikilwa

natango. Okangudulongekido ka ongala momudo 1962 lune, 1963 lune, 1964 lutano noneudo kwa ningwa oshoongalele shimwe. Oyoongalele o hai ongala alushe omafiku atatu. Oilyo aishe yomokangudulongekido oi noilonga ihapu noshilonga eshi shOmbibeli inashi mona efimbo la wana. Nosho yo eendjila dile tadi kelele okuongala luhapu - oshilyo shimwe oshi li kOlange, ivali oi li kOshomeva n. sh. t. Oilyo yomongudulongekido ya pewa oshisho shokuleshulula meumbo embo lonhumba nomoshoongalele mwa kundafanwa omawapeko ootaa pumbiwa. Fiyo onena ombinga inene oya leshululwa, omambo amwe a hupa natango. Oshilonga eshi shokuleshulula eshi tashi ka pwa pamwe neudo nokuli, nena omawapeko ootaa dimbulukiwa e nokunyolululwa nosho yo omukalo wokunyola tau konakonwa. Natango ovakonakoni vokuLondon otava konakona ngahovalu omambo aeshe nokuyeleanifa omatumbulo omEtestamenti Likulu nEtestamendi Lipe.

Tatekulu Björklund okwa wanifa oshilonga shinene shi kumwifa shelundululo noshi shi kupandulwa unene. Oshilonga sha tya ngaha kashi fi shipu noitashi ningwa mefimbo lihipi. Epipi keshe itali mono oshilonga shi fike apa shipe. Osho yo oimaliwa oyo tai longifwa mokunyanyangidifa Ombibeli oihapu. Onghee, okangudulongekido oke noshinga shine ne shokukonakona nawa nokutala kokule, unene komapipi tae uya.

Natu ididimikeni fiyo oshilonga eshi shelundululo sha pwa po noOmbibeli yOshikwanyama ya holoka.

## OONTOKOLWA DHEPANGELONGERKI

Epangelongerki lya koleke nepandulo efaneko lya zi ku kuku H. Haapanen okudhika oskola yaakiintu yiilonga okutunga oontungwa, okuhonga iiyuma nokuyogoha oongodhi niikwawo ya fa mbika.

## OSHIPONGA SHIIKOLITHA MOWAMBO

Ofye ovanyasha vOngerki onkwaevangeli pa Luther yOmowambokavango, otwa ongala muElim 1-4 Oktober 1964, otwa li tu nontundi tai popi "Omunyasha noikolifa!" Motundi ei otwa dimbulukwa nghee oikolifa ya nyona po nokuli nai oshilongo shetu ashishe, nehulilo lasho otu wete olo eshunduko longaho. Oshe tu nyikifa nai oluhodi. Paife ohatu kuu onghuwo kEpangolongerki la fimana lo li yukife onghuwo yetu ei kepangelo la fimana, opo li tale nomesho manene eekamba doikolwifa odo da tana mOwambo; unene odo di li popepi neengerki noneefikola.

Ponhele yovanyasha vOngerki onkwaevangeli pa Luther yOmowambokavango.

Toivo Ndevaetela,  
Liina Mpanda,  
Tomas Shivute.

# O K A A N D J E T U

## KAAYELELE YOMUUZILO WONDONGA

Esiku etiyali lyOkrismesa yomumvogu 1964 osheendo shaatumwa mbaka; omundohotola J. Laine, omuhongi R. Holopainen naapangi Else Witting, Anna-Liisa Hirvelä Maija Syrjä Eeva-Liisa Vakkilainen sha tsakanene pethimbo lyongula pOnayena nosheendo shomutonatelishitayingerki shOndonga, nomuuvithi gwongerki E. Angula. Osheendo sha uukilile muuzilo wOndonga nokuyakulwa kaaevangeliste A. Ihuhua, M. Nepela nomusamane Lot Muteka.

Osheendo sha li nelalakano okutalela po aayelee mboka taa kala mehalakano momakuti guuzilo wOndonga, nokukoneka omaha moka taa kala mo. Oya monika momaha gata-tu, ihe lyotango olyo: Onyuulayi. Eha ndika olyopahistori itaali tseyika; mpoka pwa monika onyombo yoshikweyo shomeya ya kala ya fumvikwa oomvula pamwe dhomathele. Itaku tseyika ethimbo lyokuhupwa kwayo, ihe uukulu wayo pamahokololo goontali otashi vulika yomethimbo lya tetekele eyo lyAawambo mevi ndiya nenge yomomathimbo gopokuthika kwawo muka. Onyombo ndjika oya mbanduka omumvo 1962 molwa shoka omiti ndhoka dha li dhe yi siikila dha tukwa kevi. Nopo tuu mpoka pwa tseyika kutya, eha ndika olya kalwa nale nando li li omugulu momathimbo ngaka mugo itamu monika oshinkoti shokukalamwenyo kwomuntu kwonale.

Etalelopo ndika lya li nashike kaayelee? Lwotango okumona nokukoneka omaha mpoka taa kala. Nolutiyaali, okufaalela ekwatho lyokolutu nolyokomwenyo.

Apehe mpoka ya monika noya gongala, aanigombo ya yakulwa nekatho lyomiti kumwe nAandonga mboka taa kala mehalakano momakuti ngeyaka. Naavu yamwe ya faalelwa ekwatho lya tya ngaaka momagumbo gawo. Konima ya shika ya etelwa elaka lyenyanyu lyehupitho, notaku landula ihe iipumbiwa yilwe yopalutu nokutseyithilwa mpoka ya zi. Mu mbika egongalo lyokOntananga olya ningi shili shoka sha pumbiwa kaantu mbeyaka. Aantananga oya gongele poshinyangagongalo shawo ngeyi: oshilya nekunde lyoye! o kapalwa nekaya lyoye! ombago, o-

## OKWE TU THIGI PO OMBADHILILA

Epafras T. M. Angolo okwa vaelwa mOngandjera. Okwa yi mUushimba sigo oku Union nokuli. Aakuluntu ye oya li ye mu hupula. Ihe, omuna gwomagalikano iha kana.

Ku Union okwa tameke oskola yuevangeliste nokwa yapulwa omumvo 1950. A longo mu Transkei. Aye a tsikile moskola yuusita nokwa yapulwa 1959. Okwa pewa egongalo mu Kokstad mu Transkei. Etume lyawo lye mu indile a ka longe ku Kaokoveld nokwe ya ko 1961.

MOkayoko a kala e na iilonga oyindji. Oyo ya fa nokuli ye mu mana oonkondo. Okwa li a indile oku ka fuda po. Omo-lwuunkundi okwa ziminwa.

Mokutegelela efudho okwa kala ngaa ha longo oskola nolwiimbo. A lundulula omaimbilo ogendji mOshikosa e ga tula mOshihero noshwo wo okatekisa okanene nokambongerki.

Okusa kwe okwe ku dhimbulula nale. Oye a popi iinima oyindji ndi noku ke yi lombwela aakwawo.

Meti - 4 Nov. a fala oshihauto shetumo kongalase kOutjo nomokugaluka okwa li e nehalo a ye kohungi yolwiimbo. Molwomvulwe onde mu indike ko. Otwa hungile ngaa na ye. Sho tu li puku ka lala okwa ti: "Hina we ngunga yomuntu. Ihe ondi uvite ngaa esiku limwe omutima gwandje gu nokufaalela ndje."

Twa hunguluka nonda ka lala. Mokati kuusiku nda penduthwa kwa ti oye okwa mana oondjenda. A yi mevululuko lyaana ya Kalunga.

Ongula sho kwa si omwene gwegumbo Mnr. Visser na Dr. Gevers ya fala omudhimba gwe kOngandjera nokwa fumvikwa pu he Mateus Angolo.

"Aanandunge taa ka yela ya foonyothi aluhe." Oye okwa thigi po oyana yatatu. Tse atuhe yomOrumana otatu halele omuselekadhi naanona efudhitho lyOmuwa.

M. Hihanguapo



## ELUNDULUKO

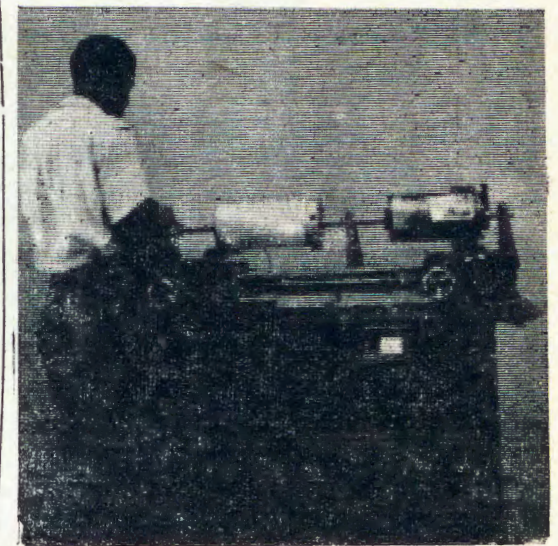
Opo u nyolele Malakia Hauuanga.  
Paulinum,  
Otjimbingue,  
Posbus 32,  
Oor Karibib. S.W.A.

mpamba, oshiyaha, oshiyemele nokakopi koye! oshizalwa shomukiintu noshomulumentu omushona nomunene ku pula nokuli! Mbika iimaliwa na yilwe ino popya sha! Iyaalo Aantananga! Ashihe mwe shi ningi osho "oshizimba oshiwana, omayambo omawanawa goopalela Kalunga" (Fil.4:18).

T. Shipanga



Ongame nge tandi yeluthwa mevi, ayehe otandi ya hili ku ngame



OSHINYANYANGIDHO sha landa eshina epe tali ningi omafano. Eshina ndyoka lya pula ooRanda 3700. Moshifo shika tamu mono omafano gamwe omape ga ningwa keshina ndika epe.

## ETSIKILOSKOLA YAAYEVANGELISTE

Mboka ya pita oskola yokEngela 1961 tayi ka ningwa mOskola yaayakuligongalo kEngela

9 Malitsa-6 Mai

Väinö Simojoki

Omukuluntu gwoskola

# OSHIKOLOLO SHEGUMBO

OSHILONGA SHOMAMBO NOIFO NOINYOLWA AISHE YOUKRISTE  
OSHO OSHILONGA SOUYEVANGELISTE

## *Etwikilo*

Oshilonga shetumo shomovapaa- ni fiyo opapa manga tu shi kwete pai- fe, oshi shi okukwatelwa kumwe no- shilonga shomambo. Nandi pule: O- ngerki otai kolo ngahelipi, ngenge oi- lyo yayo imwe kai shii okulesha O- mbibeli? Ohandi pula ngaha, osheshi otu na ovanhu vahapu va shashwa i- le inava shashwa ve he shii okulesha ove li mo vangapi? Va vala. Otava dulu ngahelipi okukoneka ehalo lo- mhapo Iyapuki ngenge kave shii okulesha Eembibeli davo? Otwa uda luhapu Jesus ngenge a pulwa sha oha nyamukula: Inamu lesa nani? Nge- nge e va nyamukula, natango ihava ūdu ko meni mwi-- inava shiiva o- mishangwa --- inava lesa.

Omambo noinyolwa aishe youkri- ste oyo oikulyahangano yeendunge no- yomunhu. wopamhepo, naanaa ngashi

oikulya oyo yokupalula olutu. Dimbu- luka Paulus omuudifi mukulu wovapaa- ni e li modolongo. Ota nyolele omu- nyasha Timoteus nota hulifa ombapi- la yaye ngaha: Kondja u uye diva kwaame ---- Nge to uya, etelele o- ndjafa yange oyo nda fiya puCarpus muTroas nomambo, ndele unene o- mukanda (Perkamente). Eshi otashi ulike shike? Ngenge ovakriste vakulu ova li va pumbwa oinyolwa ya Pau- lus youkriste, ovakriste vonena yo o- tava pumbwa oinyolwa. Ounyuni otaw pumbwa oinyolwa.

Omungome nomambo oya kwa- tafana pamafano ayo. Ei ivali oi li ponhelehangano lomhumbwe nondjala yomunhu. Oyo eemhito diwa doshilo- nga shetumo. Ou e he fi omuudifi ota ti: Ame kandi noshilonga neudifo. Ta-

la oto dulu okuyandja omungome --- oto dulu okuudifa noilonga. Keshe omukriste ota dulu okuyandja embo ile oshifo komukwao. Ota dulu yo okukumaidila vakwao okulesha noku- landa omambo noifo. Ame ohandi diladila, keshe omukriste ta shingi o- loli ile okatamba koundongi, ota dulu okuhumbatela vakwawo oinyolwa. O- ku ho i oho twaalele shike?

Eshi Jesus a kufa omungome, fye tu kufe omambo. Omambo noinyolwa youkriste oyo omaolongo taa ulikile omunhu kooPamba. Jesus okwa tula omungome moipambu oyo i shi oku- liwa tu tye. Te va dimbulukifa eshi he va pambulile shito. Omambo oo tu tye oipambu yOmbibeli nomunhu ta pumbwa nota dulu okulesha onghu- ndana inyenye pamhumbwe nopamu- fika. Omunyoli heshe a hala okutota embo ile okutula ehokololo la sha moshifo, na nyole nawa. Na nyole e- laka lipu tali udika notali udifa ko omuleshi. Okunyola inaku holola a- shike onghulungu ile okufimanekwa, ahowe. Omunyoli ke na po efimano, okwo okukwatakanifa omuleshi na Kalunga. Mokunyola inamu kala sha tashi limbilike omuleshi. Nomunyoli na pangelwe koundombwedi. Etesta- menti lipe ola li la nyolwa melaka olo hali longifwa kovanhu.

Jesus ta ti: Ame ohandi mu ifa- na ookaume nookaume ohava kunda- fana. Mokulesha embo ile oshifo omu- leshe ota kundafana na Kalunga. Ou ta nyola na koneke, ota nyola Jesus mwene ou e li Evangeli. Oinyolwa yokriste kai fi yongerki imwe aike. Oyo oyomushitwa keshe. Oyo noku- li onghedi imwe yokukondjifa okato- ngotongo pokati keengerki nomunhu namukwao. Ope na oinyolwa youkriste na imwe ihe fi youkriste. Oinyolwa ya tulwa koaltari ongeyambo, oyo tai tungu oshiwana.

Ope na oinyolwa. yopamhumbwe yolutu. Ngashi Jesus a velula nokwa kutifa omalutu, osho oinyolwa nai kume yo omhumbwe yomunhu yoko- lutu. Elaka lokunyola nali tungilwe ketindi nokonduko yonghalo, yeshiivo noyeendunge domuleshi. Eshi otashi kwafa omuleshi, a ude ko osho te shi lesa noku ude ko omulombo wEva- ngeli kehuli laye kwi.



*Mefano eli hatu mono umwe oo ta vyula nawa omambo opo a kale a wapalela nawa okulongifwa.*

# OSHIKOLOLO SHAAGUNDJUKA

## PETHIMBO NDIYAKA

### “EYOKA NDYOKA EKULU”

August Hänninen a adhika a longo omimvo ne kOwambo, manga ina hokana. Sho a hokana, a li a kala natango kOniipa, oshoka egumbo lye lya li li nokutungwa kOshigambo, ina li pwa manga. Nando a kala kOniipa, okwa tsikile wo iilonga ye kOshigambo. Oye okwa adhika komaudhigu ogendji gi ili nogi ili omolwa sho a nyolele esiku eti- 15 lya Febuluali 1905 membo lye ngeyi: “Omutondi e nomakoto ogendji nondjahi onenene, oshoka e shi shi, e nethimbo efupi. Omwenyo gwandje gwa ziyalala. Omuwa, ila ngoye mwene u tu kwathe. Tu pendutha, tu kale tu nombe-po yoye.”

Omnsamane Rautanen a tsumukumo aatumwa aape: “Ligameneni lwopombanda, ashihe tashi ka yela komeho.” Meme Frida a li a fa yina mokati kaagundjika. Olwindji August okwe ya talele po nga kOlukonda.

“Oshili tayi ka kala yi nomwenyo,” osho tate Nakambale a tumbula, “itayi pumbwa yi popilwe.”

## EGUMBO LYE LYOTANGO

Esiku eti-3 lya Malitsa 1909 August ta nyola: “Otwa tembukile kOshigambo. Otwa mono uupyakadhi owindji niilonga oyindji, nosho tuu tu u na tango.- Ihe otwa kumwa owala, nkene Kalunga okwe tu kwatha nokwe tu yambeka mu ayihe. Egumbo ndika lyetu lyo opala notu li hole shili.” Nando okwa dhiladhila ngeyi, pakutalwa pethimbo ndika egumbo ndyoka kalya li lyoopala. Uundjugo utatu uushona wa landulathana: ondjugo yimwe yokulala nontiyali oshinyanga nontitatu oyo okombitha. Kakwa li ku nostora nande, onkee ano August a pungula iinima yawo kontala yongulu. Oye a longitha omuya mokulonda kwe pombanda nokwe gu longitha okukulukitha iinima pevi.

Aantu ya li po ya nyanyukwa sho ya mono omuhongi nefolo lye. Oyo ye ya oyendji pongulu oku ya etela, ngashi ondjuhwa nuusila nuulya nomayi n. sh. t. Oyo ya pewa wo omagano gawo kaatumwa mboka. Oyo ya kuutumba wo noya pulakene nenyanyu, efolo nkene a imbi nokwa hiki okahumba. Aagust okwe ya nyolele iitya, yomaimbilo wo. Elaka na-



*Eha ndika oli li pooha dhegumbo lyooHänninen pOshigambo*

ndo inali popiwa nawa, olyu uvitike nga, sho meme efolo kwe ya longo. Aapagani oyendji ya gongala okwiilonga okuspela: me-me, me-me - meme. Oh, nkene ya nyanyukwa! Meme Julia, omulongi gwolela, a li a nyanyukilwa wo okwiilonga kwawo.

August a tameke oskola yeshasho noyekoleko nokwa longo pamikalo dhi ili nodhi ili megongalo. Osondaha ya tseyika mbala wo kaapagani noye ya nawa komambo, moka August nomulongi Martin Nakalondo yu uvitha. Ongundu yaantu ya koko kashona na kashona. Oyendji ya fa ya taamba nenyanyu oohapu dha kunwa kaahongi yawo. Omambo ga ningwa momuzile gwomukwiyu omunene. Momuzile tuu ngoka omasamane Martin a longo aanona momasiku goshiwike.

Sho pwa pita iiwike yimwe, Hänninen okwa kala ha kundathana naasamane nawa konima yelongelokalungu. Oye okwe ya pula nokwa ti: Inamu hala tu kale tu na wo ongerki ngashi kOniipa nokOlukonda aantu ye yi na? Katu niimaliwa, netumo kali niimaliwa, ihe ngele tamu tungu ongerki, otamu yi itungile, haantu yalwe. Oku nuwanawa okukumba mondunda, mwaa netango, kamu nomvula, kamu nombepo ngashi pondje. Otatu tungu tuu ongerki? Tu tamekelele iilonga, mbala tatu dhimbulula twe

yi mana. Nena itatu pumbwa okuya kOniipa kUulalelo Uuyapuki.

Aantu ya kwatwa kuuladhi noya tameke iilonga, aapagani nokuli ye ya okukwatha. Ayehe ya longo nuudhiginini na August a li mokati kawo oku ya longu tango okufoloma oombaskena, nena okutunga nokuli.

August a li e nokukonga ongunga opo a wape okutunga. litungitha oyindji ya yonukile mondjila nenge ya yakwa sho ya zi kUushimba, ihe etumo lya futu ongunga ndjoka, oshoka kaya li ongunga ya Hänninen ongunga yaAwambo, oshoka Hänninen okwe ya tungile ongerki. Oye mwene a li omulumentu omuhepele nokoombinga dhe adhihe okwa li aantu oohepele. Oombahu dha mana po omapya gawo. August okwe ya uvitile olukeno, ihe okwa li kee na sha ye mwene nokuli, opo a wape okukwatha yalwe. Oye okwe ya pe ngashi ta vulu. Taku tsikilwa

## OKALINDELI KOSKOLA 1965

Oshikako shotete:	26	Januali	fiyo
	26	Malitsa.	
—, oshitivali:	7	Apilili	fiyo
	25	Juni.	
—, oshitatu:	13	Juli	fiyo
	24	Septemba.	
—, oshitine:	5	Okotoba	fiyo
	10	Desemba.	

## SHILIPi PO MOINAKUWANIFWALONGA YETWENI, SHI LI SHOTETE KUFYENI?

Epulo eli pamwe noshikalimo shoovene shomoshinyolwa eshi pamwe tashi yukilile unene tete koonakwiifanewa oshilongayakulo shopamhepo, okutunga nokuyakula meongalo la Kristus. Ngashi: ovafita, ovapangi, ovaevangeliste, ovalongi n. sh. t. Osheshi tu li oonakupumbwa ewiliko neendunge dOmhepo ya Tate aikeike, nohatu longo ashishe melandulafano.

Omunhu okwa shitwa nakulonga. Okwa teelwa yo ngaha a wanife oilonga yaye paenghono nopamaano oo e a pewa kuKalunga omushiti. Ashike nande a pewa oilonga okulonga edu, ina pewa a kale omupapati woilonga aishe nokuhe na elandulafano, shidalelwe nande, osheshi omushiti owelandulafano. Omunhu a ufilwa komushiti efimbo—etundi omo e nokulonga. Okwa pewa yo ngaa omaano eendunge, opo a kale nelandulafano meenghendabalalanga daye a tule oshilonga keshe ponhele nomefimbo lasho. Ashike nande twa pewa omaano aa kuTate, otwa puka ngaa luhapu oku a longifa palandulafano lao. Itatu shi ningi nowino no nowina ngeno, ahowe, omolwounghundi ngaa wopanhu pamwe, nounene molwomotundi oo e li po e nondubo nelandulafano la yuka. Omapuko a tya ngaha luhapu taa ningi efinatameko, okulongifa efimbo nonghedi yokulonga, nai. Nokonima twa nyengwa shili okudimbulukwa: oshilonga shilipi po moinakuwanifwalonga yetu shi shi okukala shotete?

Konyala oinakuwanifwalonga yetu ei ivali oi nondilo i fike pamwe, aishe otwe i ifanenwa, aishe ei otai tu pumbwa shi fike pamwe. Ashike ombili eshi nda ama kombinga ei kutya: Oshilongaifano shetu osho osho nondilo unenenenenene shi dule shikwao. Ondi udite shi nokutetelwa neenghono dotete, omolweyakulo loovakwetu tete, opo nee olutivali oinakuwanifwa yetu vene, osheshi otu li po nga ovalongeli novayakuli, nopo konima okulonga osho shetu vene.

Oukwakuwanifa oshilongaifano otatu monika unene momadu avakwetu ovo va twa pombada mehumokomesho, unene momadu ovangolo. Kwinya ohaku hangwa oonakukala noilongaifano i lili noi lili, (die beroe-pinge) ha ashike yopamhepo nokuli. Oonakuviyauka va tya ngaha ove na yo omaumbo noinakuwanifwa yamo aishe. Ashike, ove udite oshilongaifano osho shotete, onghe eetundi diha-

pu domefimbo lavo, konyala neenghono nomadiladilo avo okoshilongaifano shavo, opo efimbo la hupa ta ve li longififa nee oilonga yomeumbo.

Eshi hasha unene. Oshi uditike ko nga kutya, pamwe "shitunda nonghedi." Onghe omu mOwambo yetweni twa fa hatu diinine oinakuwanifwalonga ei aishe ivali, nokuhene-yooloko naavo ve noshilongaifano eshi shelongelo. Oshayela nga kutya, fye ovawambo inatu fika manga noitatu dulu monghalo yokuhenepeya, nokudiinina po oshilongaifano ashike omolweemhumbwe di lili noku lili manga. Ashike otu na nga okwiindila kuTate, e tu pe omhepo yohole noyeyakulo, opo tu ude ko okutetelkelifa oshilongaifano e shi tu ifanena, nopo, konima yefimbo la hupa, hatu li longifa oilongaumbo yetu.

Ndi shi onda koneka lela yo kutya, vahapu ove li ovadiinini notava kondjo ngaa noshisho nokwilikana Tate Kalunga, va wanife oshilongaifano shavo, nomoukulupe nokuli ngashi vahapu mu li po nena. Ashike hatu d'ilikeni ngaa nghe shihapu sha hepa kombinga yoshilongayakulo shetu, nande hanowino nohasho twa halele. Ohashi di ngoo apa eshi eenghono detu hatu di tukulile moinakuwanifwalonga ei aishe ivali shi fike pamwe, Twa longa nokulongelela ongula fiyo omutenya oilonga yomeumbo notwa loloka. Neenghono da pwa molutu twa ka hovela omutenya oshilongaifano. Omolweloloko otwa nyengwa shili okuwanifa nande twe shi hala. Omolweloloko, oshilonga keshe shomeyakulo letu sha djuupala noshinyenga noshile nokuli okupwa. Osha li shi nokutelela mongula shi twikilwe vati, akutu nghe tai ndumbala ashike, mongula—omongula fiyo aishe otai tu kwenene ngoo nee okambungu, noyomeumbo "noyokongulu" oi li oiduto oyo ya nyengana okuhulifwa. Naashi otashi kala oshiponga nekateko loshilongayakulo twe shi peweni. No ha shoshilonga ashike, ndele noshomalutu etu yo, osheshi oisho ihapu momwenyo tau filoshisho nokupata eshi naashinya, noita pe ya omupondo washa, otai kufa po ombili momwenyo. Olutu talu tyolola, talu name notali nghundipala. — "Longeleni Omwene nehafo." — Netameko lounyengwi ou, la hovela ngaa apa: eshi twa ninga oilonga yomeumbo yotete, noshilongaifano oshitivali.

Ofye vene katu neenghono nowino neendunge yo, okulonga nokuladila palandulafano la ufwa, ndele ou e tu longela tete, nota longo nomena yo pamwe nafye, oye Omudii-nini note shi wanifa yo. Tess.5:24. Note tu pe omayambeko mahapu, nande hatu kunu noudjuu neloloko. Ps.126:5.

ILA OMHEPO YEENDUNGE TU LONGA, APA TWA PUKA, PUKULULA.

Longelo lyOmuwa oli na,  
Ndilo neyambeko lindji,  
Simano lyalyo lya adhima,  
Kokusohenda okwindji.  
Muule megulu mu uvika,  
Yengeli nkwi haa ligola,  
Munandjo ngi igundjile muka.

Hofni Nakamhela  
Paulinum  
Otjimbingwe



# OUNYUNI OTAU TONGO SHIKE

## OWAMBO OYA MONA OMEVA MAHAPU

**Ondangua.** Omeva omOwambo a kondjelwa konyala eemwedi 18, ndele paife a tana. Etale la Ndangua oli nomeva oule weefuti 25. Odula ya loka neenghono nomwiidi ouhapu yo. Koumbanganhu-utokelo wa Ndangua ondjila oi nomeva noyeendifo otai nyengua okuenda, unene yofraha yomatungo.

Oilonga otai twikile komesho nondjila ipe ya yuka kOmbalanhu ya fika nokuli pOtjifita, eemila 25 okudja kOshakati.

Omukangha womeva yo pokati kOshakati nOndangua ou li poku pwa, eemila omulongo adike okufika pOndangua.



*Mowambo odula oya loka nawa notwa pewa omeva nomwiidi. Shiimba hatu ka pewa yo oipalwifa ya wana.*

## EEFIKEPA MUDESEMBA

Pomunghulo wa M b a y e opa li eefikepa 32 da li di nomitwalo dou-djuu u fike peetona 116,520. Neefikepa edi da li da talela po Ombaye omudo wa ya odi fike 503 nomudo 1963 oda li 428.

Oda li di neeshako dosamende, oipilangi, omakalamanya noyeetwa mo yomahooli noushoshu. Dimwe oda li nomaudjuu eemongwa neendoha deembelela deeshi.

## AFRIKA TA EHELA OIMALIWA KOOMBAANGA YOUNYUNI AUSHE

Momudo 1964 Afrika ola indila (ehela) oimaliwa i fike peeRanda eemilyona 139 omolweendjila. Unene omueheli munene oye Nigeria ou a ehela eedolar eemilyona 112. Nigeria okwa ehela oimaliwa ei omolwehukumokomesho lomalusheno aye.

## OMULANDULI WA PROF. BRUWER

Komufala hembadi prof. Bruwer okwa landulwa ku **Dr. M. J. Oliver**, ndele inaku shiivika onaini te uya mOwambo.

## EHOVELO LEEFIKOLA

Neudo eefikola otadi kala hadi hovele metivali kakele komuApilili mefiku la Jan van Riebeeck.

Moshikako keshe otai fuda metitano.

## OVAWAMBO VOTETE TAVE LILONGO OILONGA YA LABORATORIA

Vavali vomOwambo ove li paife kuWindhoek tave lideula okulonga muLaboratoria, opo oshipangelo shipe shokOshakati nge tashi ka pwa notashi ka nangala, va ka longe kwi-nya. Ovo otave lilongo pamwe nOmukleurling umwe oo e lideula nale oilonga ya tya ngaha kuRepublika.

Efimbo lokulideula olo oule weemwedi heimwe ile odula imwe, opo va dule okushakenifa nawa oilonga tai pumbiwa. Patengeneko otava ka longwa nawa, opo va dule okuninga oukonakono moipangelo yetumo. Oukonakono ava otava mono eenghono moshipangelo shokOshakati.

Papokolo omunhu oku nokupita tete moskola yokombada, opo a kale a wapalela oilonga yomuLaboratoria.

## OVAPANGELI VOMOWAMBO OTAVA KA TALELAPO TRANSKEI

**Ondangua.** Ovapangeli Ovawambo otava ka ya molweendo lwavo fijo kuTranskei.

Etalelepo eli ola ningwa opo va kale noukwashili mehumokomesho lovalaule muTranskei.

Osheendo eshi otashi ka kala omalenga 28 nookapitiya vavali noohamushanga vamwe voshilogno. Ookapitiya ovo Uushona Shiimi, Onga-

ndjera na Taapopi Shikongo, Uukualudhi. Kapitiya Martin Ashikoto, Ondonga, ita dulu okuya omolwounghundi, ndele elenga Angula Shilongo ta ka kala omuponhele. Ovo otava ka enda pamwe nelenga etilyane. Otava ka fikama eti -4 la Malitsa. Olweendo olu olu nefimano mehitori lovabanhu va Suidwes.



## KOMUFALA TA TEMBUKILE KOWENDUKA

**Ondangua.** Mnr. M. S. C. Backer, Komufala woinima yovalaule mOwambo, ota tembukile muFebuluali kOwenduka, oko ta ka kala omuyakuli wa komufala omukulunhu woinima yovalaule.

Omushikuli waye ote ke ya 20 la Febuluali kOwambo patengeneko. Paife ope uya mnr. J Bosman a dja ku Pretoria noye omuyakuli mupe wa komufala pOndangua.

Mnr. J. Putter wopOndangua, ota ka tembukila kOshakati meti-1 Malitsa.

# AALESHI TAA NYOLA

*M. N. Ashikoto*, Ontananga: Natu tale ehalo lyOmuwa, shoka tali tu uthile, omolwa Jesus Kristus nguka e tu sile. Onkee ano, tu humbateni, shoka tatu shipewa kuye, omasiku omawanawa nomawinayi.

Israel Kambonde, Elim, ota ti: Omuwa Jesus e ku sile uukodhi no ina hala u kane. Onke mu opalekela egumbo lyoye omuyenda a simana.

Johannes Asino, Eedombe, ta halele oshinyangidho oshipe omayambeko gOmuwa. Ps.127:1; 128:1,4-5.

S. Nambala, Windhoek, ota kundu aakriste ayehe nohapu dhomu 1Tim.3:5,11, 15.

Simon Shiguedha, Walvisbaai, ota kumagidha aakriste ayehe, ya kale haa dhimbulukwa aamati yomehalakano momagalikano gawo.

J. Nakashimba, Tsumeb, ota ti: Uuyuni wongashingeyi owo ethindi nengena. Ihau tiwa ndi u li nawa, onke aagundjuka inatu tyeni twa lala ohambo nomatenga. Tu kongeni Omuwa manga ta monika.

Abner Ngipandulua, Walvisbaai, ota hokolola efyo lombadhilila la ningwa mOmbaye nota ti: Natu kaleni oupafi, osheshi itatu shiiva fiku Omwene wetu te uya.

## Oshilonga shomambo..... Etwikilo

pulwa pale". Oyo ongepakolwa tali umbu eeholo dokutwala eendjovo da Hekuluyomapongo mounyuni. Omunhu ota dulu okulileshela nande oku li mondjimbololo ile modila ile mokamba yaye. Oinyolwa otai fiki koilongo, oko omunyoli fiku limwe te lifile ina enda ko. Eudifo lomeeradio ohali kwelengedjele onyuni aushe. Owa koneka tuu oshilonga shomambo?

Ofye twa ti, omunhu ita hupifwa komungome auke. Otu shi shii, ongerki itai dulu okulonga noshilonga shomambo ashike. Ohatu longifa eendjovo mokuudifa, momalongelokalunga, nomailikaneno, nemonu letu, nomambo, noifo, neeradio nonomikalo detu no sho oilonga ikwao yeyakulo. Kwatakanifa omunhu nomunhu va kale ve na ombili. Kwatakanifa omunhu na Kalunga. Tu pale ngaha ondjila i mbwalangandje, opo omesho ovaleshi a yashe kOmushiti. Ve mu dimbuluke nge ta kundafana na vo momambo nomoifo. Ve mu ude ko nove mu longele noku mu fimaneka.

Ava tamu nyola notamu nyanyangida omambo, konekeni, itamu longo oshimha, ndele omOmwene. Kalunga na hambelelelwe oshilonga shomambo sha longwa kongerki yetu fiyo onena ye na yeulule eemhito doshilonga nokomesho. L. M. Shemuvalula



H. J. Malua, Tsumeb ota ti: Dulikeni kovahongi nokovakwatelikomesho veni nye mu va shikule, osheshi otava pashukile eemwenyo deni, opo ve shi ninge nehafo, ve he shi kemene, shaashi otava ka pulwa eemwenyo deni. Eimbilo 593.

Ev. Malakia Hauuanga, Luderitz, ota hepaulula nghene ovakwaneongalo vomuLuderitz ve li longekida alushe okuyambula po eongalo lavo mokuumba eengalo nomukuyandja oiyandjiwa yavo yeongalo. — Ove ou li ngahelipi na ei meongalo leni?

J. Kashokulu, Tsumeb, ota ti: "Omwene Jesus oye ondjila noshili nomwenyo." Oho landula tuu ondjila ei?

P. A. Nguutoolua, van Riebeeck Hotel ota hambelele Kalunga eshi e mu humbata moule wondjila yaye okudja kuKimberley fiyo Abamlei. Ekundo laye olo Ont. 6: 31: 34.

Jakob Johannes, Windhoek, ta kundifilepo ovaleshi aveshe vOmu kwetu na Ps. 119:1-10.

## OSHIKE WA HOOLOLA U NOKUSHILONGA MOSHIWANA?

Mokuhumifa oshiwana nedu letu komesho itatu diladila ashike ovalongi, ovafita novahakuli ile omuviyauki keshe meongalo. Omunhu keshe a ufilwa okulonga sha meongalo.

Ope noilonga ihapu ngashi okuhonga oipilangi, okuhondja. Mounyuni ou wehumokomesho kape na ou a hala okukala a mwena. Medu letu oilonga youlongi oya fimana, nde oilonga ikwao oya dinika. Hatu udu luhapu ovo ve li tula momayakulo e lili noku lili havayolwa. Ndi shi ngeno kapa li ovahondji ngeno omulongi ita dulu okulonga ovanhu ve li hamunghele? Vali itatu dulu okuudila omambo moihwa? Hano ngenge kape novatungi noidjalomwa otai di peni?

Ohandi mono vahapu tava pula oitafula noipundi, otai di peni nge kape na omupangeli?

Ohandi ku pula omukwetu, owa hoolola shike oku shi longa moshiwana? Konga enongelo fimbo kuyele, opo u kale u na yo tuu okatopolwa ka sha we ka longela oshiwana shoye.

Eteyo olinene, ndele ovalongi ke vahapu, indila omwene weteyo a tume ovalongi meteyo laye.

Juuso D. Kaluvi

Johannes Ananias, Luderitz, ota kundu ovaleshi vOmu kwetu note va halele eenghono dOmhepo Iyapuki. Ps.103:2-5.

J. K. Haluendo, Luderitz, ota kundifilepo ovamwameme mOmwene ava ve li mehalakano neendjovo dOmuudifi 11:9-11; 12:1,14 neimbilo 328.

Johannes Eliakim, Poskantoor, Swakopmund, ota nyola ngeyi: Tse Aaswakopo twa ningilwa oshigongi oshiwana kombinga yepatudho lyaanona. Twa li kaatu uvite ko nawa oshinima shika. Oonkundathana sho dha koko twa dhimbulula oku nokambo ka hala oku tu kwatha moshilonga shika oko: **Oshilalakanenwa sheputudho** (ku L. Mpanda). Kehe ngoka a hala okumona uyelele na lande okambo hoka.

Ishewe omuntu kehe to mono aana yomukweni taa tokelwa momalundu, ya thiminika ya ye kegumbo. Lesha Kol.3: 21; Mark.10:14; Rom.5:12; Mat.18:10-11.

Ta gandja omakundo ogendji kwa mboka taa lalakanene eputudho lyoonziona dha Kalunga ngoka teke tu pa ondjambi.

FINSE SENDINGDRUKKERY  
OVAMBOLAND  
ONIIPA