

OMUKWETU

No. 15

AUGUSTE

1966

OOHAPU DHAKALUNGA ODHO OONTOYE



Mestela Oiva Ngaikukwete ta ningi otundimbibeli montanda yokOupundi

Oshinima oshinene tashi opaleke uukriste wetu, oohapu dha Kalunga ngele tatu kala padho.

Aanelago otse ngele tatu dhiladhila oohapu dha Kalunga nongele tatu kala padho. Aanelago otse ngele tatu dhiladhila oohapu dha Kalunga uusiku nomutenya, twa hala oku dhi gwanitha pahole.

Onakulandula oohapu nomauvaneko Omuwa, ota kala e noondunge oombwaanawa puKalunga nopaantu. Kalunga mwene a lombwele aantu ye ya landule oohapu dhe, opo ya kale aanelago muuyuni mbuka nomuuyuni tau ya.

Ngele tatu kala moohapu dha Jesus otatu ningi aalongwa ye, notatu kokithwa koonkondo dhadho, shotwa makele Omuwa omutoye.

Mboka ya kala miiwikembibeli momagongalo, oya hempulula nkene Jesus ye mu mono omupe nomutoye kuyo. Otatu pumbwa okukala puJesus olwindji, tu taasine oohapu dhe, omulyo gwadho gu kale kelaka lyeitaalo lyetu. Tu konakone Ombimbeli, eitaalo lyetu li paluthwe. Moohapu dhOmuwa oshili ayihe yehupitho otatu yi longwa, tu dhimbulule elago twe li longelwa kuTate gwomegulu.

Ngoka e hole Jesus, oye ta dhi-

ginine iipango ye, onkee oha tondo oondjila oombwinayi. Omuntu gwa Kalunga Moses a dhini uutoye wEgipti wokathimbo, ye a hepekwe pamwe noshigwana she, oshoka okwa tala uutoye wa aluhe, mboka u niwe koshigwana shi na Kalunga.

Pethimbo ndika edhigu oohapu dka Kalunga oontoye, notatu opalekenge tatu dhi tala nawa, onyothi yongula Jesus Kristus yi pitile oomwenyo dhetu.

Omuwa, minikila oomwenyo dhetu, tu endithwe kuuyeleele, tse tu kale tu uvite uutoye woohapu dho.

Malakia Alugongo.



OMUKUETU

Auguste 1966

ELONDODHO KAAHINGI YIIHAUTO AAWINAYI

Ope na aahingi yiihauto aawana-wa. Ohaa hingi ya kotoka, ya tonata yo inaa piyagana momutse, ihe haa vulika koompango dhokuhinga. Osho taa kwatha ngaaka mokukandula po iiponga neso hali zi miihauto.

Yamwe oyo aahingi aawinayi. Mboka otaa geelwa kepangelo. Oye na omitse omikukutu. Ihaa uvu omalondodho gepangelo. Ihaa pangelwa komikalo nomandhindhiliko gokuhinga. Kaye na ko na sha naakwawo ngele taa mono oshiponga. Ngashingeyi epangelo olya kutha ko oongaku notali geele shili aayonipo yoshi-gwana mbo.

Omuvuliki ota taamba omapukululo noti ilongo omukalo omupe mukukala kwe. Ta etha uuhasha we nota vulika kompango yokuhinga. Ta tseye wo kutya, oomwenyo dhaantu mboka ta humbata noshihauto she, odha tikitha ombinzi ondhigu yOmu-wa Jesus Kristus.

OVALIINDILI OTAVE MU KUNDU

“Ovaliindili ova kundifa ovakriste aveshe opo handi ende na unene mOwambo. Ekundo mwe li pewa olo 2Tes.3:1-2,” osho omwevangeliste Johannes Ndimuedi, ta longo kOliindili, a tumbula meenghundafana.

Ndimuedi okwa longa paife kOliindili odula imwe netata. Oku li kwinya neumbo laye. Paife oku li mufudo nde a talela po Owambo. Okwa pita moskola youyevangeliste mEngela pefimbo la meekulu Liina Lindström nomushamane T.Pentikainen. Eshi a yapulwa okwa longa meongalo laKongo nOmundaungilo nde opo a tumwa kOliindili.

Omukulukadi waye, meme Nda-peua, owomeongalo laKongo. Oye omona womwevangeliste Salomo Hashipala muKongo. Ove na ounona vane. Ndimuedi ota shuna koshilonga shaye pehovelu laAuguste.



Mefano ndika omu na oshiholelwa oshiwana-wa. Oshimbamba oshinene sha tungwa. Omo aantu taa tula iilya sho taa teya. Ngele shu udha otashi tulwa koshileyi, iilya etayi falwa polumwe kolupale. Ne ndishi omuhole okatungwa, to uhala to tutu. Ninga embamba ngaakavango. Oshileyi osho etemba lyomuthigona. Mokushilonga ihapu gu nando osendi.

ONDJILA ILE OTAI LOLOLA OMUNHU

Ovamwameme ovamati mu li mehalakano, ope na oinima ivali yoye: a) Okutambula ombapila yeongalo nde to uya nayo kOushimba; shikwao b) Opokati keni nOmwene woye, pehe na ekwatafano naye.

Ongerki yetu oye lilongekida okukwafa ovaunguli vetu moluhepo alische lavo. Ova tuminwa ovaudifi, omambo, oshifo shOmukwetu nosho tuu. Ndelene ovamati vovene ohave lidingulile oludingu lilelile, ondjila hano ile.

Ohava fii kOwambo ombapila yeongalo, ile ve na oimbide pokati kavonaKalunga. Ohave uya va kwafwe mwayo ivali ve li oku kOushimba. Ovaudifili vavo mOushimba ohava uhalatava nyolele komaongalo avo mOwambo, tave va pulile eembapila shaashi tave shi indile ve shi ningilwe. Eikai fi ondjila ile tai lolola omunhu? Keongalo taku nyolelwa ye omumati oko a dja, ku shi eshi ina dja ko nayo? Omumati opo a mone naanaa ekwafo, na ende nombapila yaye yeongalo. Na ende ngaha nouhupi ahamone eloloko. Na kundafane noshinyanga shambulavo, fimbo ine uya oku. Ou e na ombapila, otashi holola naanaa kutya, oye omukriste shili ke li molupe lomushamane Adam na Eva, va li tava talele Kalunga meembuluvulo doitayi yomikwiyu va hondama.

Osha fa itashi pumbiwa u indile u li kohulonyonyo yomukwiyu, kOushimba. Paife oilonga yetu ei ye tu eta apa mOushimba, ya fa itai longwa naanaa, osheshi luhapu omuudifi oku li omutumba ta shangele komao-ngalo mOwambo. Indileni eembapila domaongalo mu uye nado.

Ovamwange mOmwene, indileni eembapila domaongalo mu uye nado mOushimba, shi ninga fimbo u li mOwambo, u ende ondjila ihupi muKristus. Ha ovamati aveke, ndele ovakriste aveshe. Jesus ta ti: Tete kongeni oshilongo sheulu, opo tamu wedelwa ko oyo tamu pumbwa.

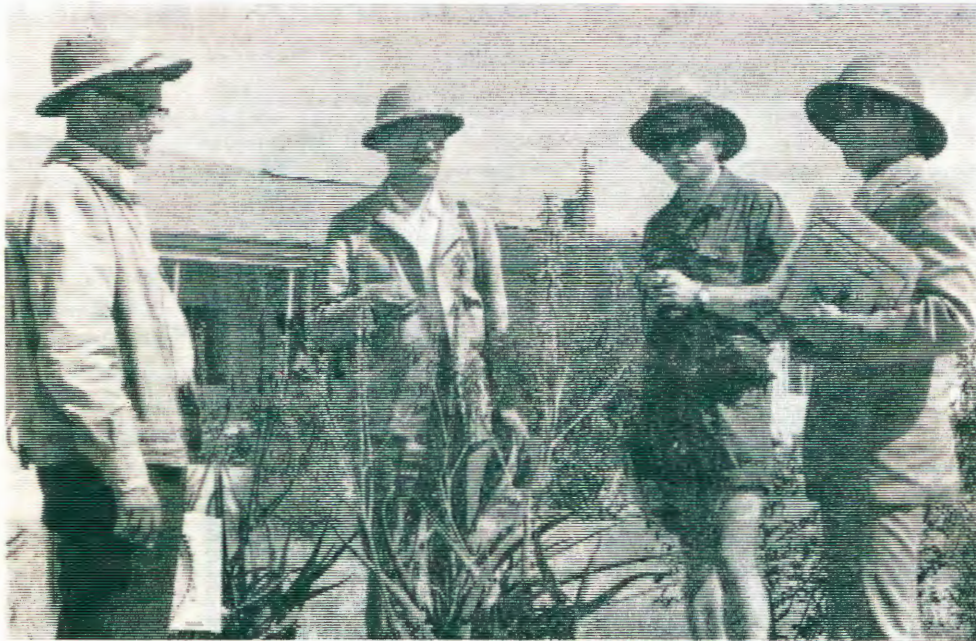
Malakia Hauuanga, Tsumeb.



Ev. J. Ndimuedi

OMUPAPA A YANDJA OIHAUTO 40 KUINDIA

Omupapa Paul okwa yandja eeloli 40 kuIndia, di kwafe mokututila ovafindjala oikulya. Omupapa okwa yandja natango ekwafelo kuIndia, osheshi okwa landa olwiishi nde okwe li tuma kuIndia noskepa okudja muBurma.



Methano otu wete aayenda yokuSoomi. Okuza kolulyo wu uka kolumoho oyo: Omusamane Hukka, omusita Aaltio, aaprofesoli Vuorinen naKaitera.

EWI

LYEVANGELI

MORADIO

Potundi 8.30

Oometa 31

Esiku 21.8.66

Owandaha: T. Heita.

Esiku 28.8.66

Omaimbilo, okulesha,

Ombimbili neuvitho:

Moses Hamutumua.

Esiku 18.9.66

Ongulohi poohapu

dha Kalunga:

Gabriel Amupolo,

Toivo Ndevaetela.

Esiku 25.9.66

Owandaha: Seblon Ekandjo,

Gerson Shipuata na

Toivo Ndevaetela.



IIGONGI MUUNINGININO NUUMVO 1966

Kalunga ngele e shi hala otamu ka ningwa iigongi mUuninginino ando ngeyi:

1. Oshigongi shaakwaniilwa nomalenga moshitayingerki shUuninginino 20/8/66.
2. Oshigongi shaasitagongalo moshitayingerki shUuninginino 22-26/8/66. Iigongi mbika iyali otayi ka ningilwa mOkahao, Ongandjera.
3. Oshigongi shaaidhiliki yiikolitha mongerki ayihe 9-11/9/66, tashi kala muElim.
4. Oshigongingerki mOkahao 4-7/10/66.
5. Oshigongi shaakriste ayehe mUuninginino muElim 15-18/12/66.

Omatseyitho:

a) Omwidhiliki kehe ne etelele uusila omakopi 6 noosende 20 dhomahoka, noosende 10 molwoshigongi n.sh.t.

b) Omukriste kehe koshigongi ne ye noosende 10 omolu oshigongi 16-18/12/66. Taleni nkene tamu thiki kiigongi mbika.

Otandi indile megongalo kehe mu kale omuwiliki ta tumine ndje omadhina nenge omwaalu ngoka gwaantu mboka taa ya miigongi, unene mbyoka yomuElim.

Kaleni mwa ndjangekwa,
Kaleni mwa yambekwa,
Mu simaneke Omuwa,
Mu tumbaleke Omuwa.

Jason Amakutuwa.

OKAANA KA PUMWA KOSHIPULULO

Okaana Lilje, keemwedi 15, oka mona oshiponga omafiku aa, eshi ka pumwa koshipululo momutwe. Lilje okaana komushamane Elia Kakoto, mwene womukunda waKongo.

Oshiponga osha holoka, eshi onunona tava danauka poshipululo. Okanona kamwe oka londa koshipululo sha hangwa sha fikama. Oshipululo osha tenguka nde ombinga yokomutwe woshipululo tai ngwadjula okaana momutwe.

Okaana ka twalwa moshihakulilo shaKongo. Oshiponga osha li shinene, osheshi ekipa lomutwe la ehamekwa. Opo oshihauto shepangelo sha fikifa okaana moshihakulilo mOdimbo, ndele eshi kwinya inapa hangwa omundokotola, okaana oka twalwa meendelelo mOnandjokwe. Meme na tate Kakoto ova enda nokaana. Okukofa kwako efiku nefiku okuwa.

ETESTAMENTI LIPE MOSHIGREKA

London. - Omahangano Ombibeli manene atano mounyuni, okwa longa mehangano nde okwa nyanyangida Etestamenti Lipe mOshigreka shovene. Ehangano lOmbibeli laAmerika, England, Duitsland, naSkotland okwa longa eshi.

Okwa hokololwa kutya: Enyanya-ngido eli ola longwa nounghulungu.

AALONGI YOOSKOLA TU YA GALIKANENE

Aavali pamwe inaa dhimbulula ondilo yoshilonga shaalongi. Osho oshinenenene notaa pumbwa omagalikaneno gaavali ayehe, opo ya gwani-the nawa oshinakugwanithwa shawo.

Ndishu uuyuni owaanona naagundjuka mboka ye li mooskola, oondunge dhawo odhindji otaye dhi kunwa kaalongi mooskola. Omulongwa

ota pewa uunkulungu komulongi gwe. Oshigwana ngele tashi ka kala noondunge, omikalo netilokalunga, otashi zi maalongi. Ohayu uhala taa sikuuka nokulunga aana yeni. Iilonga yomake wo otaye yi dheulilwa mooskola. Aanandunge ayehe yomaludhi muuyuni oya longwa kaalongi. Manga omuvali a mwena megumbo, shila ota ti: Nena ito yi ko koskola!

Aalongi oyo ye li momupepo gwokuhambula oshigwana. Ino ya dhi-mbwa-megalikano taa!

O S H I P A N G E L O M O S H A K A T I

Oshipangelo oshinene shepangelo mOshakati, oshe egululilwa iilonga yasho eti- 21. 7. 1966, kuNgoloneya W. C. du Plessis gwaVenduka.

Ongundu onene yaawambo naatiligane sho ya gongala naahona yoKovenduka, W. C. du Plessis, Eaton nooyakwawo yalwe sho ya thiki-po, amushanga gwongerki yOwambokavango M. Ngipandulua, okwa tamekitha oshituthi nohapu ya Kalunga.

Opwa imbwa eimbilo 489: 2, 3 nokonima okwa lesa Eps. 33: 1-12. "Otwa gongalele mpaka nena, tu pandule Kalunga omolwa Oshipangelo shika oshinene mOwambo ayihe twe shi pewa. Osha dhikwa po okukondjitha aatondi yomalutu getu nokutya, omauvu gi ili nogiili. Kalunga okwa popi shi ningwe nosha ningwa," osho amushanga Ngipandulua a popi pafupi.

Omusamane Eaton okwa tseyithathana omalenga, aakwaniilwa naahona nonaayehe ya gongalele mpeyaka. Okwa tumbula wo kutya, Ngoloneya oye omukwashigwana gwotango mevi ndika. Oye oku na iimpwiyu oyindji niinima yaaluudhe.

Olufu lwa Ngoloneya W. C. du Plessis, olwe ya. Okwa pandula oondohotola yepangelo noyetumo, sho ya thiki nenyanyu moshituthi. A pandula wo aawambo sho ya ngundumane ne mo.

Okwa ti: "Pamwe natse opu na oyendji ya zi koRepublika, ngaashi Dr. Snyman gwokuPretoria. Oye okwi ile nale mOwambo pamwe nongundu ya Odendaal."

Ngoloneya okwa pandula ishewe aatumwa aandohotola, aapangi no sho aaniilonga yi ili noyi ili mOwambo. "One inamu panga owala omalutu, aawe, oomwenyo noombepo dhaawambo odha pangwa kune nongashi tamu tsikile natango oshilonga sheni naampakawo," omusamane du Plessis atumbulile oondohotola naapangi aatumwa.

Otandi pandula aakomeho moshigwana shika. Moonkundathana dhetu nayo, olwindji oyi indile ya pewe iipangelo nuupangelogona mOwambo. Nena otwa gongaleni tu hambeleleni Kalunga, hakukondja nenge tu ehamekathaneni, ihe okuhambelela Kalumolwekwatho tali ka za mOshipangelo shika.

Omusamane W. C. du Plessis okwa ti kutya, oshigwana shi nokukwatha wo miilonga yaandohotola



Ngoloneya W. C. du Plessis kolumoho, ota kundu aakwanashituthi pOshakati. Kolulyo omutoloki Frans Iihuhua.



Aakwaniilwa aakiintu yokOkavango nomalenga oya thikile wo moshituthi.

naapangi. "Mu nokuvulika komalombwelo nokomautho agehe goshipangelo. Oshipangelo oshatungilwa aavu. Inashi tungilwa aayingithi nenge aayendaguli yowala."

Okwa tsikile nokutumbula etegelelo olyo ndjoka, ku monike oondohotola naapangi taa zi moshigwana shoshene. Okwa gandja oshiholelwa shaapiluli yomiti yaali, mboka ya longwa kovenduka notaa longo mwiya.

"Naku dhigininwe elongo. Onawa sho aanona mOwambo nokavango taa ilongo nawa. Yamwe ya adha nokuli St. VI noya ningi aapukululi yaashona," a popi ishewe.

Omusamane du Plessis okwa fatululile ayehe ya li ya gongala, nkene epangelo lya Suidwes lya kwatathana sigo omoRepublika, moka mwa kuutumba omusimanekwa Verwoerd. Okwa kumike aapangeli yOwambo nOka-

OSHE EGULULILWA IILONGA YASHO

vango, ya lele noya longe medhina lya Kalunga, nokonima Ngoloneya a tsu oshipatululo momweelo gwOshipangelo nokwa ti: Otandi egulula Oshipangelo, medhina lyepangelo. Edhina lye nesiku lyeguluko lyOshipangelo oli li mokapelende ka mbambangelwa pekuma posheelo shOshipangelo.

Kombinga yomikithi omusamane du Plessis okwa ti: Oshipangelo osha tungilwa aantu mboka taya alukwa shili. Opena yamwe taya alukwa moondunge nomoombepo dhawo. Ohaya popi nohaya ningi iinima tayi ehameke aantu yawo notayi ya nikitha oluhodhi. Oya pumbwa iikulya niilonga nakiintu yawo otaa lili sho aalumentu yawo yaa po we. Otu na okuhenuka iiponga mbyoka yaa ye huka kutse noondunge dhayo dhazhe tu kwate.

Komufala omukuluntu, Eaton, a thikama. Okwa pandula ngoloneya nehuku lyoshishopiwa she. "Otandi pandula epangelo lya Suidwes naalongi pamwe nalyo, ngaashi aalongi yoondjila, omeya, ooposa, ookomufala mOwambo, Okavango noKaoko natungi aawambo, mboka ya longo nuupenda. Tandi pandula wo aatumwa aapangi naandohotola yomatumo naapangi aawambo. Tandi pandula omukwaniilwa U. Shiimi noshishopiwa she nosho wo ehuku lyoshishopiwa shomusita Matias," osho omusamane Eaton a popi.

Okwa gwedha ko ishewe omatumbulo gamwe ngaashi: "Oompito dhokukwatha aawambo otadhi holoka, uuna aawambo taa ka vula okutuma oyana mooskola dhuundohotola. Ngo-

loneya gwaSuidwes sho a thiki ngeyi mOwambo, otashi ti epangelo lya Suid-Afrika oli na ombili naawambo. Olya hala li longele kumwe naawambo, onke lya tumu komufala omunene (Kommissaris-Generaal), nguka eli mOshakati. Elongelokumwe olyo tali tungu oshigwana. Epangelo otali gandja noitali tegelele li galulilwe sha. Taambeni okwaako kwepangelo, ne mu ende pamwe nakwo."

Komufala omunene gwOshakati, omusamane Olivier, a eta oshipopi-

wa she. A tumbula nkene iilonga ya huma komeho mOshakati. A popi oondama, iitauwa, eyogelo, ongalashe nomatungo ga tungwa, naangoka ga thanekwa ga tungwe, nkene ga pula iimaliwa oyindji, ihe omolwaawambo tuu.

"Otatu mu kwatha petameko o-
po komeho mu ikwathe ne yene. Epangelo olyo he none oyana," osho a tumbula. Peha lyepangelo lya Suidwes nolya Republika, okwa gandja epandulo nokwa kundu ayehe.



Limwe lyomatungo go opala pOshakati, olyo ndika methano. Ope na wo oshungo yomeya.

Peha lyOwambo ayihe, omukwaniilwa Uushona Shiimi okwa popi wo. Moshishopiwa she a pandula epangelo ngeyi:

"Otwe ende ondjila onde notu li ngashingeyi popepi. Koombinga adhihe dhOwambo otatu mono iilonga yepangelo. Oyendji yoshigwana shetu otaa ka yakulwa moshipangelo shika. Epangelo lya hala li tu pe oondohotola, ndongo tatu ka mona yetu yene. Ngele tapu longelwa kumwe nepangelo, otapu kala ombili. Otatu pandula molwoshipangelo shika nofabilika yihongomwa yi li mokati ketu. Aahona otandi mu kundu mu ende nawa nge tamu shuna."

Pehulilo, omupeha gwongerki ya Katolika a hulitha negalikano lyokuhamblela Kalunga.

Aantu oyendjiyendji ya gongalele po, ngele aatiligane nenge aaludhe, oya talithwa omaha gi ili nogi ili goshipangelo nomanga inaa halakana, oya pewa oondhimbo dhaMwadhina.



Aantu oyendjiyendji oya gongalele moshituthi shokOshakati.

ETALELOPO MUJOHANNESBURG

MuFebuluali omumvo nguka opwa ningwa oshigongi shehangano lyoongerki oonkwaLuther dhomuumbugantu waAfrika. Ehangano ndika olya anduka moshigongi shoka sha kala hashi ithanwa CCLF (oshigongi-wiliki shoongerki momukanka guukwaLuther). Koshigongi shika omumbisofi gwetu okwa kala ha yi ko olwindji. Ihe muFebuluali 1966, oshigongi osha pewa edhina FELCSA (ehangano lyoongerki oonkwaLuther dhomuumbugantu waAfrika), moka ongerki yetu yi li oshilyo. Moshigongi sha Febuluali - 66, omukuluntutumwa Eirola namushanga gwongerki Ngipandulua, oya kala aapeha yongerki yetu, noya kala nokuli aapeha yiilyo 5, oshoka ongerki yetu oyo onene mehanganano ndika pamwaalu gwiilyo. Oya li yi nokutuma ando aakwashigongi 5, ihe omolwoluhepo lwiimaliwa inashi vulika.

Esiku 22/6/66, epangelongundu lyehangano ndika olya gongala ishe-we muJohannesburg. Omumbisofi gwetu namushanga gwongerki ya kala moshigongi shika. Molweendo lwaatumwa yetu mboka ya zi ko Febuluali -66, oya li ya mono ompito yokutalelapo Aawambo mboka ya zi kuAngola naamboka ya zimininwa okulonga hwiya omolwoombapila dhaahona yawo. Oyo oya nyanyukilwa etalelopo noye tu pula omambo niifo yOmukwetu. Metalelopo lyongashingeyi, omumbisofi a talelepo Aawambo mboka. Pwa dhimbululwa nkene ya longathana, nopwa shashwa nokuli aantu 7 esiku ndyoka 19/6/66. - Aawambo mboka oya kala haa ningilwa elongelokalunga komusita gwomusutu Marothi nokumuhongi gwombulu, Malan. Oya yuulukwa noya indile ya pewe omuyakuli ngoka te ya kwatha melaka lyawo. Epangelongerki olya hala okutuma ko omwevangeliste a kwathe.

Ongulohi yetu ya hugunina okukala muJohannesburg, omusitagongalo Lekgetha, ngoka e tu yakula megumbo lye, okwa ithana aasita aakwawo naakulukadhi yawo pamwe nomudhiginini gwiiniwe yegongalo lyawo namushanga gwawo, ye tu ningile ohungi yelalekathano. Ohungi oya li nelalakano lyokutseyathana. Oyo ya holola ondjuulukwe yawo mekwatathano lyuumwayinathana, noya pula oshilongatamo mongerki yetu nkene tashi longwa. Koni-ma oya pula ihe omapulo omolwaayebelele noshe ya penduthile ondjuulukwe yokutalela po ongerki yetu, ihe ya uvaneke oku tu kwatha momagalikano.

Aapangi yomoshipangelo shaaludhe muJohannesburg, Baragwanath Hospitaal, oya tumine oshikethatamo shaapangi yongerki yetu R4.70 noohema ndatu. Shika osha zi mpaka, amushanga gwongerki yetu sho a li e ya hokololele oshilongatamo mongerki yetu, moka a tumbula iiketha yomahanganotumo gaagundjuka, gaasita, gaanangeshefa nogaapangi mongerki yetu manga a li kuJohannesburg muFebuluali. Oyo oya ti: "Otwa hala okukwatha oshikethatamo shaapangi aakwetu, shaa tuu to tu tumine efano lyomuye-lele gumwe, opo tu kale wo twa ninga sha kombinga yetumo, oshoka tse katu nompito ndjoka yakwetu ye yi na okulongela Omukulili gwawo." Kalunga na hambelele sho tatu pewa ookuume ye nehala okukwatha oshilongatamo mongerki yetu. Otashi tu nyanyudha notashi tu tsu omukumo omolwaamwameme taye tu galikanene. — Taambeni wo omakundo ga zi kaakriste mbeyaka twa tsakanene nayo.

M. Ngipandulua.

OMULONGI KAINO HARJANNE OKWA YI KAANDJAWO



Oshili tuu, oye kee po we? Ondu uvite uudhigu oku shi itaala, nondi shi shi wo kutya, nando katu mu lwe-te we kombanda yevi, otu shi shi ngaa, oye ina sa, aawe, ota kala e nomwenyo, ngaashi Omuwa Jesus mwene a ti: "Oongoka i itaala ndje, oye ta kala e nomwenyo, nando a kale a sa." Joh. 11:25. Eeno, okwa yi ashike kegumbo, ngaashi aamwayina ya li ya tula metseyitho lyeso lye etumbulo ndi lya zi mOmbimbeli: "Nomasiku giilonga yomoshilonga she shoga hulu, okwa yi kegumbo." Luk. 1:23, palundululo lyoshiSoomi.

Eeno, opo aadhika eetha oshilonga shoshene mongulu yetumo a kale mombili yuukulupe, nando ohole yokuholo Omukulili noshilonga shetumo oye mu thiminike okwiipyakidhila nantango noshilonga shOmuwa. Ngaashi momwedhi gwa yi moshituthi oshinene shetumo, okwa li e nuupyakadhi owindji aniwa. Eeno, oshilonga shetumo osha li shi holike shili kuye noshigwana shaawambo wo. Oshilonga shOmuwa nomOwambo nomuSoomi naanashilonga yongerki niigwana yoyene, oye a li ihaa dhimbwa oku yi fala koshipala sha Kalunga. Olwindji a ningi ethimbo ele a tsoongolo megalikano. Aaholike ye okwe ya kondjele shili koshipala sha Kalunga. Onde shi tseya nawa, oshoka shaa tuu pwa monika ompito, a li a hala okugalikana pamwe nangame.

KOwambo okwe ya lwotango 1928 nokwa longo mOseminari mOniipa nomokagumbo mOshigambo, kumwe omimvo 8. Lutiyali okwe ya 1938 nokwa longo konyala ethimbo alihe mEngela, mokagumbo. Okwa lundulula wo omaimbilo gamwe mOshikwanyama.

Ngashingeyi omulongi ngu omudhiginini mepya lyOmuwa, a yi kegumbo, mevululuko lyaana ya Kalunga.

Ngame, kombinga yandje, tandi mu hambelelele Kalunga omolweyambeko ndyoka nda pewa molwe. Pamwe nangoye wo, ngoka we mu tseya, osho to ningi wo pamwe nangame.

Kalunga awike na simanekwe!
Maija Kantele.

OSHIGONGINGERKI OTASHI KA GONGALA

Opwa tokolwa kutya, oshigongingerki shOongerki onkwaevangeli pa Luther yomOwambokavango, shi ka gongale mOkahao eti- 4-7 lya Okto-ba-66. Otashi tameke nelongelokalunga esiku tuu ndyoka.

Aakriste otaa tegelelwa ya galikanene oshigongi shika oshinene shoongerki, Omuwa a endithe oonkunda-thana nawa, sho a hala okutunga ongerki Ye.

INO NINGA ELIMALIMA

Omuleshi omukwetu, ongiini kombinga yoye? Aantu oyendji oya fa omalimalima. Ohaa yi moongerki, ihe ngele ya zi mo, otaya tsikile esimano lyawo lyuuyuni mbuka.

Oto ende tuu muyelele, nenge owa kala omutumba momilema? Ngele to kambadhala okulongela aawa yaali, kala u shi shi kutya, ongoye elimalima ashike. Zeni mo mokati kawo ne mu iyoolole mo, osho Omuwa ta ti. 2Kor.6:17.

OUNYUNI OTAU TONGO SHIKE

EKONAKONO LINENE LOMEVA

Epangelo laSuid-Afrika ola tota ongudu (kommissie) yovanandunge ve li po 15. Otai konakona apeshe omaufemba omeva paemhumbwe doshilongo di lili na di lili. Elalakano olo: Oshilongo shi kale shi na omeva a wana nawa apeshe mokulongifwa pailonga nopaitukulwa i lili na i lili yomoshilongo. Omushamane Verwoerd oye a tota ongudu oyo.

EESKEPA DE LISHITAMBA, 23 VA FYA

MuNew York mwa kundanwa ngaha: Ovanhu 23 ova fya na vaha-pu va halakana, eshi oskepa imwe yovaIngilisha ye lidenga moyovaAmerika, oshiponga sha ningwa momeva pokati ka Staten Island na New Jersey. Oskepa yovaIngilisha Alva Cape yeetona 11,252 noyovaAmerika Texaco Massachusetts yeetona 16,515, odo de lishitamba.

Opwa holoka oमितेमो eshi eemahooli da hwama nde opa li oupyakadi.

EKONAKONO LYOMEYA GOMBUGA, PAMWE OTALI KA KWATHA OLIINDILI

PuKoicha, muumbangalantuushilo wOliindili, ope na ngashingeyi ekonakono enene lyomeya. Oshilando shOliindili oshi na aluhe uupyakadhi wompumbwe yomeya, onkee epangelo lyomeya otali konakona omeya gomevi mombuga ndjika Namib, ya tale ngele taa mono omeya ge shi kulongithwa.

Ongundu yiilonga yomeya (Afdeling Geologiese Opnames), otayi konakona uulethimbo womeya ngoka gomevi, ya tale ngele oge li moonza dhuuntshitwe, nenge pamwe omeya gowala. Ngele oge li moonza dhuuntshitwe, nena Oliindili otayi ka hupa nawa kombinga yomeya.

Omeya ngele ga monika, otaga tumwa kuPretoria, ga ka konakonwe nendjuukununo. Ogo taga tumwa ishe-we kuHolland, nkoka uulethimbo wolela wago tau ka monika mo.

A ADHIKA A SA MOMULONGA GWA EROS

Omuwambo omulumentu, e li poomvula 45, okwa adhika a sa momulonga gwa Eros. Aapolosi ya C. I. D. otaa kongo ya mone ngoka e mu shi nokukonakona ashike. Puye opwa adhika iikumbyatha.

OMIKALO OMIPE TADHI YA MOMUKWETU

Momalunza gomapangelo giifo yongerki yOwambokavango, omwa kundana ethaneko kutya, mOmukwetu otamu ya iinima iipe. Edhina lyongerki otali ka holoka mo, edhina lyomuwiliki gwoshifo (hoofredakteur) nolya amushanga gwoshifo, otali holoka mo wo. Osho wo ondando yasho komumvo na lungapi tashi holoka, otayi holoka mo.

Moshifo tamu kala wo ehala lyoRadio yevangeli, ano etseyitho lyomasiku nomathimbo uuna tapu uvika omazuvitho mOshiwambo moRadio. E-histori lyetumo tali holoka mo wo nosho wo omatseyitho goongalo ndhoka hadhi umbwa moongerki, osho sha kundanwa mpaka.

NATANGO OSHIPONGA SHA HOLOKA MONDJILA YATSUMEB NA GROOTFONTEIN

Ovatilyane vatatu novalaule vavali ova ningwa oiveta, eshi oshihautomo va li sha topa okuulu kwokonima nde tashi kandoma. Osha ningilwa langhele eemaila mbali okudja mOshivanda mongalama ei ya ya ke-diva leendobe.

OMATHANEKO MELONGO LYAALUUDHE

Opwa ningwa omathaneko okwopaleka oondjambi dhaalongi aavalelwamo, omafudho omale, oombonasa dhomafudho noopensiuna dhawo. Omathaneko ngaka oga ningwa moshigongi (kongres) shaalongi, sha ningwa muKeetmanshoop noga tuminwa Epangelo lyelongo (Departement van Onderwys).

Momathaneko (voorstelle) ngoka taga indile oondjambi dhaalongi aavalelwamo dhi kale oombwanawa, opwa monika kutya, otashi kwatha okuhilila aalongi oyendji muulongi.

Opwa thanekwa wo, aalongi aavalelwamo ya mone omafudho omale ngoombaati naalongi aatiligane. Oopensiuna dhaalongi odha kundathanwa nepangelo lyelongo olyo li uthe oshinima shika, oshoka otashi pumbiwa moshilonga shaalongi.

BANDA OKWA TI, OIMALIWA ITAI U MOMHEPO

Blantyre.—“Oimaliwa itai u momhepo ngaashi omana, shaashi nee twa mona emanguluko mepangelo letu,” osho omushamane dr. Hasting Banda, opersidenti yotete ya Malawi, a lombwela ovapiya omafiku aa.

Okwa ti kutya, okumona elipangelo itashi ti ovanhu inava longa vali. Okwa indila ovakwashiwana vaye, va ngungumane meendunge diwa haku eta omaupyakadi.

Olwotete eshi a popya ngaha okudja tuu eshi Malawi la mona elipangelo.

OMUKONGO A MONO OSHIPONGA SHO A TAAGULUKA ONGAMBA

Aakongo yoongalagombe moku-konga kwawo, oya taaguluka ongamba yOwambo nUushimba. A, ya pogola: “Kiilongo yaantu ihaku ikolwa matanga.”

Okwa kundanwa kutya, manga aakongo yoothitukuti ya londa uukambe nokukonga onyama, nani ya taaguluka ongamba. Aapolosi yokukelela ongamba oye ya mono noye ya ithana. Mbeyaka yuukambe ya tsu ko uusipolo koonkambe ya ka holame. Aakeleli yongamba oya umbu, onke omumati Mvula Kambonde, gwegongalo lyOnyanya, okwa yahwa mokugulu. Okwa mona naanaa oshiponga.

Okwa falwa moshipangelo muTsumeb nokwa kundanwa kutya, okugulu okwa tetwa ko. Shoka tashi landula ko inashi tseyika manga, ihe mpaka opu na elondodho. Aakongo ayeheyehe mOwambo nopomaha galwe, onawa ya pukuluke shili, yaa landule omadhiladhilo gOshiwambo omakulu, ihe mokweendagula ya kotoke yaa taaguluke ongamba, ngele kaye na epitikilo lya nyolwa.

OTEYA YOMOONDJILA

Oteya ndjoka tayi longithwa moonjila dhuumbangalantu waSuidwes, oya monika kutya, oya kola nawa ngele tayi pilulilwa mumwe nevi lyontsi yefululu, ndjoka hali pepwapepwa kombepo miitopolwa mbika. Sho pe na einkelo lyuukolele woteya nokutya nomevi epu lyOwambo otayi ka kala ya kola nawa, onke ondjila ya Tsumeb na Ndangua oyo ya taale lwa ngashingeyi okulongwa.

OMUHAKANWA GWAPOLIO OKWE ENDE OOMAILA 184, 000 NOMBASKELA

Omusamane Conrad Dube, gwoomvula 37, okwa thigi po oshilando shaandjawa, Quebec muKanada, opo a dhingoloke uuyuni nombaskela. Okuza kesiku ndyoka a tameka olweendo lwe, okwa ende oomaila 184, 000, nokwa pitile miilongo 59. Ngashingeyi oku li pehulilo lyondjenda ye yokudhiingoloka uuyuni nombaskela.

Omusamane nguka Dube, okwa kwatwa kuuvu wapolio, sho a li e na omimvo mbali adhike. Oye oshilema shapolio melaka nomiilyo, ha popi nohe ende nuudhigu. Ngashingeyi okwa ningi omvula 14 e li mondjenda ye yokudhiingoloka uuyuni nombaskela. Oye omukaanadafulani koludhi.

Poshinyanyangidho pOniipa okwa piti po eti- 18/7/66. Ota tsikile ondjila ye kuAngola. Aatali mboka ye mu mono, oya li ye mu tananekela omeho. Ngele to mu tala, ou wete shili ekanda lya dhengwa lya lila. C. Dube nguka okwa hokololwa kutya, okwa dhiladhila okushuna koshilongo shaandjawa kuKanada, nkoka a zile ko, noko taka nyola nduno embo lyehokololo lye, shoka a mono muuyuni ngele a tsakanitha oshilonga she.

Okwa hokololwa wo kutya, okweenda kwokwene okwe ku tseyo sho a li noomvula 12 nokupopya okwe ku tseyo pethimbo lyomimvo 16, ano moluulema. Okwe ende momavi gahamano nokwa thiki muSuid-Afrika muNovemba 1965. Okwa talele po nduno Swaziland, Natal, Mosambik na Transvaal.

Oku na omutsalo guudhigu woofunda 50 (lbs), hagu ende kooniga dhombaskela ye. Momutsalo omu na otenda, oshako yokulala (sleeping bag) noradio. Kondongelwa hayi ende kombunda, ohaku kala okati, ku na omapandela gaali, lyaKanada nolyaSuid-Afrika taga imbila. Kombaskela ye yoo-ngela (kataula), oku na omapeleki omanene, kwa nyolwa omaukwatya ge.



Omusamane Conrad Dube ngoka ta dhingoloka uuyuni nombaskela, a thanekelwa pOshinyanyangidho pOniipa mOwambo.

AALESHI TAA NYOLA

Omugundjuka *Natangue Nambo-mbola*, Oniimuandi, ota popi oshilonga shuudiakoni ngeyi: Omugundjuka ngo-ye, megongalo lyeni oho longo tuu oshilonga sheyakulo? Nenge pamwe owa lala owala? Tse huka otatu yakula oohepele, aakulupe, iilema naaposi, nando inatu pita moskola yuudiakoni. Yakula aantu yoposhilongo sheni noonkondo dhoye dhuugundjuka. Foibe gwomOmbimbeli oye oshiholelwa shetu, Rom. 16:16. Aayapostoli oya yakula zantu nomuudhigu. Jesus oye tsuu mokuyakula aantu. Tu mu holeleni ano.

Marta Nangolo, Onguediva, ota nyola ngeyi: Mokutala egalikano twa fa tu wete oshinima oshishona, oshoka yamwe hatu galikana koshipala shOmuwa, tse twaa na ombili. Omuntu ota yematitha omukwawo nenge ta ningi omasiku inaa popya nomukwawo, ihe ota galikana. Ita dhimbulukwa oohapu dhaKalunga ndhoka tadhi ti: "Manga etango inaali ya mo, pa mukweni ombili, opo ihe u ye u galikane."

Johannes P. Ndemuueda, Windhoek, ota ti: Dimbuluka Omushiti woye uha pwile moinalutu. Oikwaunyuni oyo oifufyamundja yongaho, inatu pwileni muyo. Efimbo otali tu vakele ngoshiliva.

Th. N. Amuaama, Windhoek, okwa kundu aaleshi yOmukwetu nomatumbulo taga landula: Kaleni uyelele wuuyuni. Uuyuni owu udha omilema ihe aakriste oya tulwa ya kale muuyuni ongoolamba tadhi minikile. Omukriste ngele ita minikile mokukala kwe, okwa faula mokuminikila uuyuni.

Selma Ikango, Luderitz, ota ti ngeyi: Ihe tango aamwameme, tu galikani oohapu dhOmuwa dhi tondoke nodhi simanekwe palwe ngashika mokati ketu. Omuwa oye othithiya yomwenyo.

Alfeus Muaetako, Otavi, ota hokolola ehafo laye. Okwa kala nokulonga vakwao oskola yeshasho mOtavi. Fiyo efiku 18/6/66, eshi ovanafikola vaye va shashwa. Okwa hafela oshilonga shedalululo, Omhepo Iyapuki te shi longo movashitwa vaye.

Frans Hamunjela, Oniipa, ota hokolola omilema dhuupagani tadhi pangele aamwameme aahimba, aanga mbwe naadhimba puushiinda wetu. Ote tu hiya tu ye ko ngele nomagalikano getu, ngele nomalutu getu nenge nemona lyetu. Tu ya ningile ngashika tse twa ningilwa wo.

UUYUNI OWA TYA KOKUHULA

Otandi popi shoka sha popiwa olwindji. Uuyuni owa tya ko. Otu shi lwetelela. Iningwanima iipe otayi ningwa. Eso lyombadhilila olya indjipala. Omaudhigu oga indjipala niinima oye pya okweeta omaupyakadhi.

Osho tuu sha popiwa nale. Mbi-ka yi nokutetekela eyo lyOmuwa. Shika otandi shi popi nda hala kutya: Tu ilongekidhileni eyo lyOmuwa. Tu kaleni twi ilongekidha okutsakaneka Omuwa gwetu, oshoka osho tuu tashi kala sha tya ngaaka sigo okehulilo lyuuyuni neyo lyOmuwa oto haluka owala kwa ti kolokoto.

Josef Teofilus.

Onghenda yOmwene Jesus Kristus Nohole ya Kalunga Neendafano lOmhepo Iyapuki Li kale nafye, li kale nafye. Atusheni atusheni, Amen!

- MEhangano 640.

FINSE SENDINGDRUKKERY
ONIIPA OVAMBOLAND