

# OMUKWETU

Registered at the General Post Office as a Newspaper





## ONAKWIIWA YETU OILIPIPO?

Eshi twe shi pombuda paife otushi shii nawa nhumbi sha li shi na efininiko momaliudo etu nouyehame momalutu, nde omunhu owa fa tashi ku tomhele naanaa kutya Suidwes ola fika pondodo oyo pa kala oiwana ihapu mounyuni omido da dja ko, omo ombili ya kala inini, etilo lihapu neteelelo lihe po.

Shiimba oto shi itavele pamwe nOmukwetu kutya onghalo ya tya ngaha kai fi shito yovakalimo vaSuidwes module weedula 50 da pita. Sho eshi kashi shii va li okuudika ko kutya, efimbo linya kakwa li oiyeheameki, ahowe. Okukala kweendunge nokuhapya kweshiivo leemhumbwe defiku keshe, shiimba nouxupi wondaka yaau ta kamwa kaya li i na omaudikilo oyo ya li ya kalekela po oshifambili osho kwa li shi na okukala shihe po.

Modula twa enda mo neudo, vahapu inava mona oilonga nde va kala tava xupu nai. Oonakufya otwa li tu va kwete, sha etwa komikalo ihapu imwe tu shii oku i tambula ngaashi efo lomupiya wOmwene, omufitaongalo Malakia Hauuanga, mEmgela. Nde oonakufya ovo ve limangeleka, va yashwa va pondwa ile sha shimwe shi lili omadiladilo etu otaa fikama a kanghwa, pamwe hatu shi efele ashike momake aau ha shiiva ashishe

**Ovanafikola haaveshe va mwene eefikola.** Vahapu va elaela ashike apa naapenya noshe va twala momahongaulo mahapu. Katu shii kudimbwa odimbo ya denga momutwe woshilongatumo shOvashoomi osho sha longa apa oule weedula efele, eshi Omukulunhutumwa lhamaki neumbo laye va imbwa va alukile apa. Oku na yo vahapu va endwa panghedi ei.

Kakele koiningwanima ei ongerki oi shii yo okuholola apa ehekeleko mwaayo ye tu shakenekele moule womudo ou notai holola oupopepi weke lOmwene pufye.

Pehovelo lela lomudo eengerki eenghwaevangeli paLuther dOvadalelwamo muSuidwes, oda ninga lwotete oshoongalele shEhangano mOtjimbingwe omo oukumwe wOngerki yaKristus mounyuni wa fatululwa pauelele wOndjovo yaKalunga. Ovakwangerki veengerki mbali da hangana (VELKSWA) va tomhelwa ouhefi wokuhauda ko ondilo yoshinima shoukumwe wongerki moule wefimbo lile. Nde oshoongalele osha hambela yo Kalunga eshi a yandja Omhemhepo yaye i holole oshiholekwa eshi ngaashi tashi hololelwa eengerki dihapu natango mounyuni pomafimbo nomafimbo.

Ohatu ti yo kutya nomhito ei ya li ya yeulukila ongerki pehovelo nopexulilo lomudo ou, eshi ya kala meenghundafana nahamushanga Ndjai wOiwana ya ha ngana (V.V.O.), Dr. Kurt Waldheim nokuyandja omadiladilo ayo, hashimha. Omhito ei oya endululwa vali komushikuli waye, Dr. Alfred Martin Escher.

Oshikalimo sheenghundafana edi osha kala sha yela kutya omolwOndjovo ya-

Kalunga ei ekende tali mono oiponga ngaashi yetondafano ya nyika okupanukila meumbo laKalunga, Ongerki itai mwena inai londwela moshinima osho. Onghe kwa tiwa kutya oshipa shilaula medu eli nashi kale yo sha valulwa (fimanekwa).

Ei aische oinima twe i ameka kombuda paife, onghe ya ninga omahepu ongho. Olyelye mbela ta ningi omuxunga neki apa a twikile kehastoli eli, opo e tu etele apa oshipala shonakwiiwa yetu medu haku tiwa oli li natango mombiya? Ounyuni ou na eamo lokuudifa ombili, elao nehepuluko, unene pefimbo loiponga.

Omesho omunhu womuKalunga oshinima shi lili. Ohaa talifwa oiholekwa oyo hai va fininike oku i holola nande luhapu ohashi va talifa nai. Oshisho she-longekido lomailikano nomailikaneno o molwovakali medu eli avesheveshe, ngaa-shi sha yandjwa mEpagelongerki oshi na sha nonghalo ei, opo ombili yaKalunga ei i shii ku amena omitima (hamalutu ashike) nomadiladilo ovanhu i monike shili.

Ombili ei oshiihati hashi yandjwa kovakwaulu. Osho shi li efina leudifo lOkrismesa twe i taalela oshipala omafiku aa omo hatu lombwelwa: "Inamu tila, ohandi mu udifile ombili!", Hano onakwiiwa yetu ohatu i shilipalekelwa ashike kelaka lOkrismesa.

## Ekundo lyOkrismesa

Omumvo 1972 ogu li ngashingeyi pokuhula po nethimbo lyaKrismesa oli li popepi atuhe tu dhimbulukwe okuvalwa kwaKristus nonkundana yenyanyu kombanda yevi, sho twa zi momumvo gwiiwonga iidhigu neitulomo enene.

Nge tatu tala konima yetu muule womumvo, nena oomwenyo dhetu otadhi udhithwa ashike ombepo yepandulo. Moombinga odhindji ngaashi yuulongi okwa li ku na ehukumomeho li nyanyudha. Eyokomeho li thike mpoka olya li lya vulikithwa keitulomo, kelongelokumwe ewanawa pokati keni natse aanambelewa ya OTA.

Medhina lyandje mwene nolyaaniimpwiyu pamwe nangame mu OTA, onda hala oku mu pandula unene omolwaayihe mbyoka.

Osho olunza lwomukumo gwetu olunene kutse sho tu li mehanganano limwe meyambulopo lyelongo lyetu nomeindjipaleko lyelago lyaantu. Otandi mu halele elago nomayambeko gaKrismesa. Omumvo Omupe nagu kale gu na ompolo kune nelago.

Tse nomukulukadhi gwandje Ali nokamwetu Leonard nokatekulwa ketu Martin, otatu mu halele one amuhe, unene iilyo ya OTA., osho wo ookuume koombinga adhihe dhOwambo muumbwalangandja wayo nomuule wayo, omayambeko gaKrismesa nOmumvo

## OKRISMESA IWA KOVAHONGIFIKOLA

Oufiku wa tya keengulasha nomutenya u li pokuuya. Mudo mukulu dja mo, Mudo mupe e uye mo.

Okunye vakwetu ovahongifikola hamu longo nomwa loloka, kundweni. Otwa dalwela Omukulili oKristus Omwene moshilando shaDavid.

Hefeleni mo omhepo ipe tai findikile mofudo. Dimbweni aische yokonima, taaloleni komesho. Tuleni oshenyo mofudo. Hefeleni mo omhepo ipe yongula yaKrismesa. Pameni vali, opo mu dule okupalamena oilonga yefimano noyeshito pamwe naKalunga momudo 1973.

Kunye amushe oKrismesa iwa nOmudo Mupe u na omayambeko aeshe.

Omukweni molonga,

D. Erastus Sjameneh

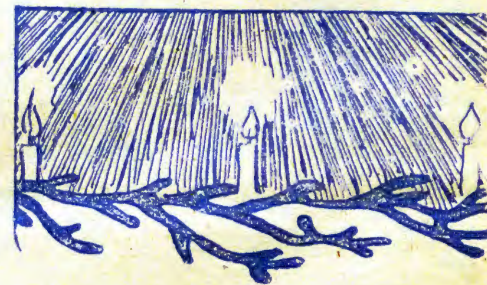


## Okukalamwenyo kwe

Ja Otto okwa valwa eti 10.2.1939. Osikola yuunona okwe yi endela mOkaiti, mOliindili nomOshomeya. MuTsumeb omo a pitila ositanda VI nokwa tsikile kosikola yokombanda kuAgustinium, kOkahandja nkoka a pewa onzapo yuulongi 1959.

Konima sho a mana eilongo lyuulongi nokwaadha onkatu yaJunior pethimbo oyo tuu ndyoka, okwa langekwa omulongi mOvenduka mosikola yaAaherero. Okwa longo ano osikola 1960-1966.

Omumvo gwa landula ko 1968 okwa zi mo muulongi omolwiinima yimwe nokwa falwa kuPretoria. Sho a galuka okwa pongekwa kOwambo hoka a tameke oshilonga she shuulongi 1969 mosikola yuunona poluno, mOndonga mpoka e li sigo onena.





# Ondjovo ya ninga ombelela

Oshikalimo shomuJoh.1.1-18, ohashi ifanwa Etwalemo. Mokulesha eendjovo edi, omunhu a fa ta wilikilwa kwaasho shi li mEvangeli lopaJohannes. Konyala oshikalimo ashishe shevangeli eli tashi monika meevelishe edi. Eshi nda konakona eendjovo edi, onda dimbulukwa kutya, kamu na ashike oshikalimo shomevangeli paJohannes, ndelene **Oshikalimo** shOmbibeli aishe konyala tashi hangwa metwalemo eli. Osha tulwa mo nomatumbulo maxupi ndele noitya ya pama, omo omuyapostoli wOmwene ta yandje eeshili di na omwenyo, opo nee ou to lesha u dimbulukwe oshili yaKalunga, u i tambule neitavelo nde u mone elao nomwenyo waalushe. Hano otekisti yetu ei, ohatu i tula moitukulwa itatu:

I. Jesus Kristus oye **Ondjovo**, meevelishe 1-5 (tala yo 1Mos.1;2;3)

Omuyapostoli Johannes ota tale kwaasho sha ningwa nale pehovele, oko Moses omumati waKalunga ta hovele omambo aye. Ndele Johannes ta i moule woshinima e dule Moses, nande te shi eta nomatumbulo maxupi. Moses ta hokolola ehistolileshito nepangelo laKalunga moiwana unene moshiwana Israel. Evangeli lopaJohannes otali kumu keshito li lili, **koilonga yexupifo**. Omuyapostoli Johannes okwa ninginifwa kOmhepo Iyapuki moukwaalushe, nde ta mono mo Omwene nOmushiti nOmufilishisho waaisho, ye oye nee oo a hala oku ku hokololela. Moses ota hovele pehovele lounyuni nolomafimbo, ndele Johannes ota hovele kwinya manga ounyuni nomafimbo aha li ko, nde ta mono moukalunga **Ondjovo** ov. 1,2. Ote ku lombwele eshito lounyuni ov.3, nefiloshisho lounyuni ov.4, fiyo ta eta epunduko nenyonauko lomunhu moulunde ov.5. Hano Ondjovo Oye Omushiti

# Omutumwa gwaKalunga Jesus

Omadhina ngaka gaali Jesus naKristus, oga za momalaka gaali Oshiheberi nOshigreka. Jesus mOshiheberi otali ti Josua — Omuhupithi. Edhina Kristus olya za mOshigreka notali holola uukwatya woshilonga shomuntu ano ngashi "mestela" nenge "omupangi". Kristus tali ti "Mesias" — omukwaniilwa.

Kristus edhina lyaangoka a kala a tegelelwa opo e ye a kuthe ko epangelo alihe miikaha yayalwe nokulela iigwana ayihe. Moshigwana shalsrael mwa kala wo mu na ooJesus oyendji, ihe eyooloko lyaJesus Kristus olya monika mpoka sho muye mwa tsakanithilwa ayihe mbyoka ya hunganekwa tayi tsu muukwatya waMesias.

Edhina nehololo lyoshilonga nge taga tulwa kumwe ngashi Jesus Kristus, nena uyelele owindji otau monika muukwatya waJesus nenge mushoka sha hunganekwa.

"E to mu luku Jesus, oshoka oye ota hupitha oshigwana she moondjo dhasho" Mat.1:21.

Edhina Jesus otali ti wo Jehova ta kwatha. Oye omukulili. Omutumwa gwaKalunga Jesus oye oku na edhina lyopashilonga she. Ihe oku na wo edhina lye lye lyene. Ayihe mbika otayi udhitha uupersona we. Oye omukwaniilwa. Ihe oye wo omusaseli.

## Vahetatu va nangekwa metumo

Ovaeangeliste 8 vomo 26 ove likalekelwa oshilongatamo momapa etumo ongerki. Konyala oitaingerki aishe mwa yandjwa ehekeleko komhumbwe ei tai lumata ongerki okumona ovanashilonga va wana.

Omuyevangeliste Filippus liyambo, Okahao, okwa tumwa kepya letumo kOkatsheidhi, mUumbugantu wegongalo lyaNangalo. Junias Haixuxwa, okwa nangekwa mepya letumo muKongo fimbo omuyevangeliste Efraim Hshipala a tumwa konima yOngaba, kOkalanga.

Omuyevangeliste Abraham Malwa okwa nangekwa naye yo konima yOngaba kOnambwanga, osho yo omuyevangeliste Ruben Moombelo kOshangalala. Ketoto okwa tumina oshimati shetumo omuyevangeliste Jeremia Tjilumbu, Omudhimba, fimbo kOnyulaye mOndonga kwa tumina Nabot Imene. Kompungu omuyevangeliste wotete Omuyelele Elias Misse, okulonga mokati kOvamwaina meengaba deongalo olo.



OMUKWETU OTA HALELE AALESHE AYEHE OKRIS-  
MESA OMBWANAWA NOMUMVO OMUPE GWELAGO.  
TATU TSIKILENI NATANGO OMUMVO TAGU YA  
NGELE KALUNGA E SHI HALA.





## Onyofi yaBetlehem oi li alushe oshiholekwa

Oshiholekwa shinene mehokololo laKrisimesa, omunhu ito dulu ku shi fatulula noupu, osho onyofi yaBetlehem ei ya pendulile omadiladilo ovanongo vokoushilo ngaashi taa hokololwa komuyevangeli Mateus 2:2-10.



Nande osha kala sha itavelwa kutya oshiningwa osho oshoshili, ekonakono lopaunongononi nomadiladilo ovadiladili (filosofi) novalongeliitavelo, inava fika meudeko liwa ngeenge onyofi inya oya li imwe yomeenyofi dihapu keulu, ile oya holokele imwe aike moukwatya wayo, noya hololelelwe (monifwa) ashike ovanongo ile oya monikile yo tuu kuvamwe ve lili.

Eshi Mateus e shi mona kutya oshiningwanima eshi oshiwa shi wedelwe mehokololo ledalo laJesus, ine shi ningifwa unene kovakonakoni veenyofi ava kwa li va fimana pefimbo linya. Okudja nale eulu ola kala li na ovakonakoni ovo hava tale omadiladilo mape taa holoka ko. Omunhu okwa kala omwilikani wolnima yokeulu ngaashi etango, ohani neenyofi.

Oikalunga yOvagreka oya li ya itavelwa kutya otai endaenda langhele koxulo yeeendudu (Yeleka neendjovo dOmupsalmi: Ame handi yelula omesho ange keemhunda oko taku di ekwafo lange. Ps.121:1.

Pefelemudo 17 Ovayarabia ova fimaneka emanya la shiivika nawa "Emanya lilaula laKaaba" nde emanya eli konima ola ka kufwa mo nawa kutya oyo aa haku tiwa kutya onyofi ya tokoka keulu (meteori). Embonyoko lomaendo makulukulu aMeksiko, mombila imwe omwa hangika emanya lonnyofi oyo ya tokoka keulu la dingilwa nawa monhanga yoshimhu nokwa li la fudikwa nefimaneko linene. Emanya olo okwa li li na oudjuu weetona mbali.

Nande inaku shiivika fiyo onena kutya onaini ile onghelipi ile openi omadu (planete) a monika, nokwa shiivika, ehistolli OVababeli otali tumbula ngaha kutya okwa kala eenyofi dinene. Paife osha yela kutya eenyofi dinya odo edi hatu ifana paife etango, ohani, mawila (Mars) Mercury, Jupiter naSaturnus.

### Okwiilikana eenyofi

Eeplanete edi fiku tadi lunduluka osheshi ohadi linyenge notadi monika shi lili, ohaku tiwa oikalunga oya handuka noya hala okweetela ovanhu oshiponga kedu. Opo nee omupristeli wado ta fikama nokwiilikana.

Ekonakono leenyofi oshinima sha kala nalenale, kakele shapo muJuda omo ihali tu kumwe nonghedi yokwiilikana Kalunga kashili. Vali nomuRoma ekonakono leenyofi

inali fimanekwa, osheshi kwa li kwa taliika kutya ou te li longifa ota handukilwa shi fike pomudipai. Nde osha holoka luhapu kutya oshiholekwa shokeulu alushe osha kondjifa omatengeneko ovanhu va kala neltulemo okushiiva oikwaulu.

Pefimbo lepaduduko leendunge (renaissance) muEuropa noukriste eshi wa mona onhele, eenyofi oda kala da fimanekwa unene keehamba nokovanamapya. Pefimbo la-Shakespeare ovanhu vahapu ova lotoka eendjila diledile okupwilikina omahokololo eenyofi kovanandunge.

### Omadina ovanongo

Natango paitavelo liwa itaku shiivika nawa kutya ovalumenhu vokoushilo va shikulile onyofi inya okwa li vangapi, nongeenge ova li eehamba ile ovafyoona. Opo sha ka holoka kokulekule kombinga yomadina avo kutya; oBaltasar, Kaspar naMeljior, nande eshi otashi dulika omatengeneko ongaho. Eshi sha yela osho osho kutya ova fimana nova mona omukumo okuyukilila kouhamba waHerodes, opo ve mu lombwele onyofi inai holoka nale keulu. Ombibeli otai ti kutya, nande Herodes naye okwa li e na ovakonakoni vaye navo yo ova hangikile ve li mopwili.

Omweevangeli Lukas mehokololo eli ota hepaulula ovafita mofuka veedi, evadimo keulu nongudu yolwiimbo yokeulu nde ita

tumbula sha kombinga yonyofi. Opo nee itashi shiivika vali noupu pamishangwa kutya osha li ngahelipi naanaa.

Moule weedula domafele mahapu a ka pita, ovakonakoni vehistolli, ovanongononi, ovafilosofi ova hetekela va mone enyamukulo konyofi yaBetlehem. Isak Abravanel, Omuputu nOmuyyuda ou a kala pokati keedula 1437-1508 ota fatulula omakwatafano eedula deshito-ngaha.

Okudja keedula 2365 konima yeshito, olo olo efimbo Ovaisrael va kala moupika wa-Egipiti. Eshi otashi ti kutya osha li omudo 1625 Kristus ina dalwa. Nde momudo 2360 omo mwa monika omalunduluko oiningwanima ihapu yomeshito ngaashi eeplanete Jupiter naSaturnus muPisces osho sha lundulula neenghono eshito palutu nopamhepo.

Mokati kovanongononi omwa kala yo Johann Kepler, odalele yOvindowishi ou a kala pefimbo eli 1571-1630. Pambo olo e li shanga "Ekonakono laKepler" ota ti kutya onyofi yaBetlehem kai fi nande oshinima shipe meshito, nde oya holoka ashike nomukalo inau ikililwa kovantu eshi ya kuluka kanini nde tai ehene popepi novanhu. Oku na vahapu tave mu tamanekela oshinima eshi.

Ounongononi otau hokolola alushe emono leenyofi dipe mevangandjo, nokwa tengenekwa kutya pamwe onyofi yaBetlehem oyo imwe yomwaado, ye liholola noshingeshine tashi kumwifa ovanhu. Epulo linene loshiningwa eshi oli li opo eshi itashi tumbulwa vali pamwe pe lili, kakele kuMateus omweevange li.

### Twa nyengwa

NomOkrisimesa yoneudo ngeenge hatu diladila omunhu a lyata kohani mefimbo letu, ohatu shi tale yo nomukumo kutya nonyofi yaBetlehem oshinima hatu dulu oku shi uda ko. Natu tye oshiningwa eshi osha monikile nga kuvahapu nde inave shi hokolola, shaashi Ovayuuda va kala ihava tumbula omahokololo omakwailongo, ile osha li ashike sha hololelwa, ovanongo vokoushilo opo va yandje omaano avo oshingoli, shaashi okaana oka li ohamba, oshidimba, shaashi okaana ka li Kalunga nomirha, shaashi okaana oka ninga okanhu?

Otwa nyengwa okushiiva ei aische. Nedalo alishe lokaana aka, Kalunga okwa longekida oinima ihapu twa nyengwa oku iuda ko neendunge domomotwe. Exupifo letu kali li mokuuda ko omishangwa, nde omokudi itavela.

Southern Cross





# T B

## ANDO NDA YILE KOSHIPANGELO, KUYELE

Ndika oyo etumbulo lyakehe gumwe ngoka a li moshipangelo ta ehama oTi Bi. Oyendji inaa tsey a kutya, T.B. oshike, ohayi etwa koshike, ohayi taandele ngiini, ohayi kelelwa ngiini nohayi pangwa ngiini.

T.B. omukithi hagu pula uule wethimbo okukala momuntu nomilnamwenyo yi ili noyi ili. Ohagu etwa koombuto dhuuvu M. Tuberculosis. Otu na omaludhi gooT.B. notandi tumbula mpaka ashike ngoka haga holoka miipangelo yetu olwindji.

- oT.B. gwepunga (Pulmonary T.B.)
- oT.B. yomomasipa (T.B. Ostemylitis)
- oT.B. yoomodhi dholutu (T.B. Adenitis)
- oT.B. yomehukamugongo nomuuluwi (T.B. Meningitis)
- oT.B. yomombinzi (miliary T. B.)
- oT.B. yomoshipa (Lupus Vulgaris)
- oT.B. yomela (Peritoneal T. B.)

### Omandhindhiliko noosimptomata

Omukolo gwa ninga ethimbo ele nuuvu wontulo. Uunkundi wolutu (lethargy) okukanitha ondjundo noonkondo, okupusha ongu la onene nongulohi, omuntu nge ta fudha a fa ta pwiillile, omvulwe ya kehe esiku, okukanitha ehala lyokulya nehala lyiikulya yomagadhi ogendji (anorexia). Pomathimbo gamwe omuntu ta kungu nenge a fa ta mbili ngwa (nausea).

Omuntu ta zindi koodungu dhominwe dhiikaha (drum strick finger), uuvu wombunda nenge omutse hagu ehama ethimbo alihe, omuntu ta zindi mooridjamama, unene aanona. Omuntu ta zindi pomatsikililo gomasipa, oshipa tashi ningi liyaladhidi omuntu ta ningi ela enene lyu udha omeya (ascites).

### Nkene T.B. ta taandele

Omuntu sho ta fudhile mo oombakiteli dha T.B. ndhoka dhi li mombepo. Omuntu sho ta fudhile mo oombakiteli dhaT.B. ngele pu na ngoka te ehama T.B. ta kolola, ta teshima, ta popi nosho tuu.

T.B. otatu yi adha wo miikulya ngashi okulya onyama yongombe ya sa kepunga, omahini goongombe dhi na epunga, iikulya ya longekidhwa komuntu te ehama T.B., ngashi mookefe nomuudingosho nomoohotela nosho tuu nge ta kolola.

T.B. otayi taandele wo ngele omuntu ta nwine mekopi nenge mehalasa lyotombo nenge mompamba ya niwinwa komuvu gwaT.B. Uunona hau yamu otatu kwatwa koT.B. sho ta yamu kuyina e na T. B. nosho tuu.

Mboka ye li miilonga yokukonakona oombakiteli, oye na uupu okukwatwa koT.B. osho wo mboka haa panga aavu nenge haa longo momikunda dhaanaT.B. oye na uupu okukwatwa kuyo (ward infection).



Longitha wo akalapi nenge okanasituke uuna to shemita.

## Uunake to kwatwa ku T.B?

Shampa ito li iikulya tayi landula mpa: oshimbombo shomahangu, omahini, omagadhi, onyama, iiyimati, kehe esiku, omayi, omboloto ontiligane, omakunde, omayangwa, omboga, ontaku yi nuuhutu cwindji nosho tuu. Mbika yi lya ya gwana pandjele (balance diet).

Egumbo lya nyata nomudhingoloko gwalyo, otashi endelelitha oombuto dha T. B., osho wo ondjugo yokulala moka oonte dhetango ihaadhi adha. Okulala mondjugo yimwe mu li oyendjiyendji nenge megumbo oongundu noongundu ngaashi momalukanda.

linguma ihayi piithwa pondje, uunene yaanona naakulupe, oshoka oombuto dhuuvu odhi hole mpo pwa tuta, pwa luudha, pwa na oonte dhetango. Omikithi dhilwe ngashi okakwenyene noshikayikayi, otadhi nkundipaleke omapunga nomuntu oku na uupu okukwatwa ko T. B. (Lung carcinoma).

Okulonga miilonga yontsi ngaashi okuhelula oosamende nosho tuu oto mono omukithi gwokomapunga Silicosis). Uunona ta kwatwa ko T. B. ngele inau tuntilwa (BCG.) ndyoka li na oonkondo mombinzi oomvula 1-3 lwaampoka.

### T. B. otayi kelelwa ngiini?

Ekelelo lyuuvu oli vule kokulekule epango sho wa kwatwa. Lya ano iikulya yi na ongushu, pamukalo nopandjele. Egumbo, ngoye mwene niikutu yi kale ya yela. Ikelela konyama yongombe ya sa epunga, omahini ga fulukithwe manga inaaga nuwa kakanona.

Omikalo dha putuka ngashi hatu dhi ningi shito, inadhi dhinwa nadhi dhigininwe. Ino ipembela shaampoka, ino hiyila shaampoka. Ngele to kolola to teshima, ikwata komulungu, opo u kelele eindjipalo lyoombuto dhuuvu.

Omulongekidhi gwiikulya ino popila ngoye ino kololela kombanda yiikulya. Aavu ya T. B. momagumbo getu naa kaliwe nayo nuuhwenge, haku ya tonda, ihe oku ya kwatha mohole yaa ivunde mukehe shoka tashi pumbiwa wo kuyalwe.

Aakulupe naa kwathwe uundooha wokuhiyila mo ngashi oyendji haa ningi, omumu gwa T.B. na kale e na iilongitho ye mwene, iizalomwa, iinguma yokulala niililomwa. Uunona uushona inatu u pitikeni u hunge aavu ya T.B.

Uuyogoki unene otatu pufwa mpoka pe na aantu oyendji taa li yo taa nu ngashi muudingosho nomookefe, onke iiyakulitho moka nayi silwe oshimpwiyu yi kale tayi opalekwa ethimbo kehe manga inaayi longithwa kaantu yalwe. Ngele wa mono omandhindhiliko gamwe nenge wa limbililwa mugo, endelela u ye koshipangelo.

Omumu gwa T. B. dhiginina okunwa omitti wa lombwelwa u dhi nwe, ino pititha po esiku ino dhi nwa. Ngele to shi ningi ope na uudhigu u aluke.

W. Shali Kamati

## EFYO LAMALAKIA HAUUANGA

Onghundana yefyo lomufitaongalo Malakia Hauuanga eti 26.11.1972 mEngela oya kukula eemwenyo davahapu. Hamolwaasho ngeno ehe na okufya, ndelenee unene omolwaasho sha talika kutya Kalunga okwe mu kufa po diva mokati ketu.

Tate Malakia okwa li eke leyakulo Kalunga e li tulile mokati kovanhu. Ina ndalapatela eenghono daye, eendunge daye nomadiladilo aye ile keshe tuu osho shaye a tala kutya otashi etele omunhu mukwao elao nehenokomesho mokulamwenyo. Okwe liyandja keyakulo lomunhu mukwao shi nyenga okufatululwa moitya.

Pombila yaye oyo kwa li a udanekela i yapulwe komubishofi, Dr. Leonard Auala ile komufitaongalo tatekulu Paulus Nailenge, tatekulu Vilho Kaulinge okwa ti kutya:

Malakia ondi mu shii, osheshi otwa kala naxe ou twa kondjela naye oshilongo shaUkwanyama fiyo efiku laxuuninwa lolwoodi. Xe yaMalakia okwa li e na onyati, nde oi dulike kuyaMalakia, osheshi Malakia okwa





## Nakufya Hauuanga

Da dja kep. 5

kondjela edu lomeulu.”

Luhapu ngeenge ovalilifya tava lili nakufya otava diladila unene oukaume wopanhu naasho kwa li a ningilwa kunakufya shopadu, nde oonakulila Malakia vahapu ovoovo tava diladila oluhepo le va fiilwa eshi va kanifa ou he va konge le ombili yokomwenyo.

Omufitaongalo Natanael Shinana pefudiko ota itavelwa kuvahapu eshi a popile kunakufya Malakia ta ti:

“Ngeenge a shiiva ovo vehe na ombili pokati kavo, nakufya Malakia iha tulumukwa fimbo ina hetekela a tale ngeenge ota dulu okuninga po sha va paafane ombili. Iha mwenene ouwii ina hetekela a tale ngeenge ota dulu oku u kandula po.

Eshi e shi ninga mEngela momafiku aye axuninwa eshi a tula eongalo linya li kale momhepo imwe nomutima umwe mokutunga ongerki yalo, osho eshi ninga efimbo laye alishe a kala moshilonga eedula 25.

Tate Malakia eenghono daye onda pwila pondje yOwambo nde nande sha kala she mu nyemateka, inashi mana po ouladi waye. Ehafo laye eshi Ongerki ye mu alulila moshwana shaye oku va udifila evangeli, Kalunga ina pitika li kale lile. Ashike osha yela kutya ombila yaye momawendo aNgela otai twikile natango eudifo laye notali ke linyengifa eemwenyo dihapu ongaau e na omweyno natango.

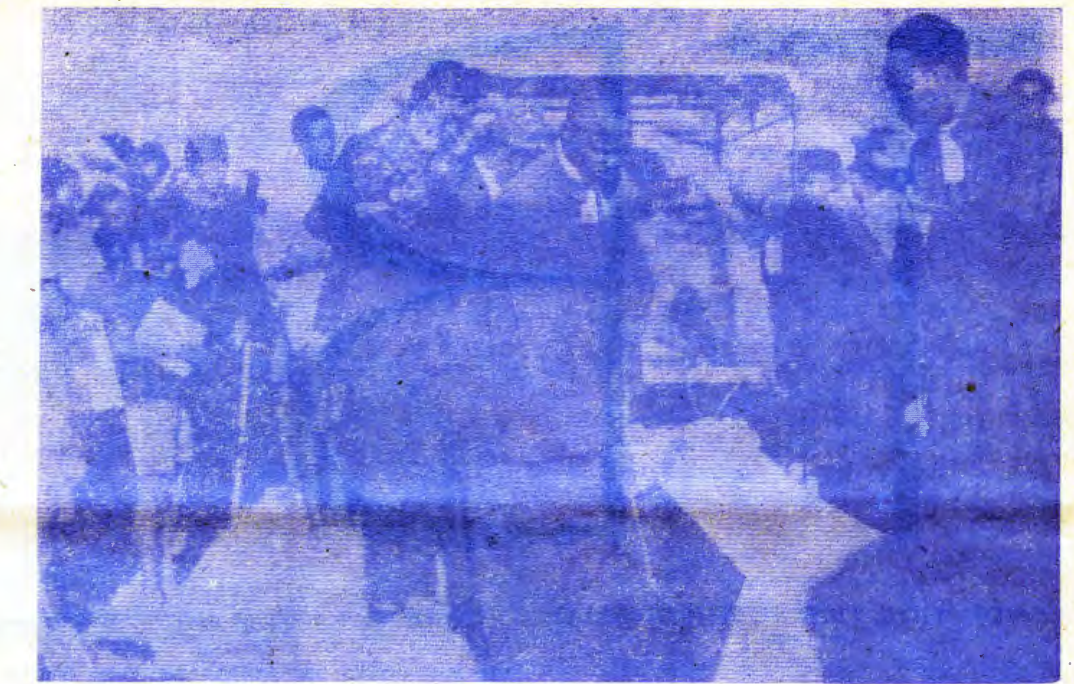


Ovafitaongalo vahapu okwa li va holoka pefudiko lomukwaita mukwao Malakia Hauuanga. Tate Stefanus Mvula oye a ningi eyapulo. Okwa ama kanini kolumoshu.

### Okukalamwenyo kwaMalakia

Omufitaongalo Malakia Hauuanga okwa dalwa 1917. Okwa hovela oshilonga shoyevangeliste 1947-1964 osho a longa mEngela, mOkatope, moKavango, kuWelwitchia, Windhoek nokuLuderitz.

Okwa yapulilwa oshilonga shoufitaongalo



Oshikefa shomudimba otashi tumbilwa mewendo kovafitaongalo Lasarus Nghipandulua kolulyo naHerman Shongolo pokati.

### OMUFUDO WOMUTUMWA WOMWENE, MALAKIA

Omupiya waKalunga omufitaongalo Malakia Hauuanga eshi a lotauka keembinga neembinga daSuidwes alishe nokukuwila oshiwana shaKalunga shi alukile kOmwene washo, Epangelongerki ole mu alulila keumbo 1970. Eshi osha li sha fa tashi nyamukula kodjuulufi oyo ya kala mutate Hauuanga efimbo lile, onghee okwa fuda omufudo mule waxuuninwa neendjovo edi:

Omwene na hambelwe eshi nda mona omhito okulonga (okuudifa) moshwana shange mOwambo. Onda kala ndi na oshisho mowwenyo wange. Akutu eshi hai kulupile pondje yajerusalem, yoshiwana shange, inandi shi udifila.

Ohandi pandula ovakriste ovo nda yakula, mOushimba eshi va yakula nge neyakulo lokolutu. Hano ova diinina nge nawa, opo ndi twikile ngaashi nda twikila komesho.

Omundilo wetumo owa xwama muame ngaha: Eshi evangeli louhamba waKalunga moshwana shetu la etwa mo kovatumwa va fiya po oshiwana shavo. Ndi kale ngahelipi itai diladila oshiwana shange mOwambo?

Ngeenge ndi hole oshiwana shange, nen a ondi na oku shi diladilila exupifo. Ngeenge hai shi diladilile exupifo, olyeye teshi twaalele exupifo? Ovatumwa tuu vali?

Omumwameme umwe koKavango okwa pulile nge ta ti: “Eshi we uya koKavango oupaani kOukwanyama owa pwa ko nee?”

Epulo eli onda li nda nyengwa oku li nyamukula. Omwene ota ti: “Ollandu yomulrael itamu i maneko fiyo ohandi ya. Oupaani inau pwa ko, ndele nee ondjila yetumo moshwana kai shi oshixulila, ahowe.

Hai ti, ndi kale ngahelipi itai diladila oshiwana shange omolwexupifo. Olye ne te shi, twaalele exupifo? Okukala moulunde osho okupundukifa oshiwana, osheshi eyambuko lasha, oli li meke loye omukwashiwana.

Waima, oko u li oko owa tumwa komutumi. Omolwashike u na eenhamanana omutumi ngeenge te ku shunifa kedu leni? Eshi osho ehambelwe pefimbo loukulupe nge to nangekwa vali moshwana shoye. Vamwe moinlonga fiku ve udite ounyenye weyakulo ongeenge pe na elikolo lasha. Oshiwana shoye osho efimano loye pOmwene.

Omwene ota ka pula oshilyo keshe komuyakuli ha yakula oshiwana. Shi ninga hano ove elenga lOmwene. Omwene e ku fimaneke.

1965 eshi a monika kutya omaudjuu ometumo okwe mu tekula nokwe mu ninga omulumenhu lela mouhakumwenyo. Okwa nangekwa meongalo laTsumeb fiyo 1970 eshi Ongerki ye mu alulila keumbo meya kulo lovanandu moshihakulilo shaNgela.

Nakufya Hauuanga okwa fiya po omufiyekadi nonona 9.



## EVANGELI LYOMOONDJIMBO

Moshigongi shaasita ya Elok shono sha ningwa mOngwediva, eti 13-17.11.1972 oya dhimbulula ethimbo ndika taku pumbiwa euvitho lyevangeli lyomoondjimbo noya ningi nokuli efanekotokolo tali ti:

Omusitagongalo Matti Endjala ngoka ta longekidha egongalo epe kEengolo, mekongalo lyaNakayale, mOmbalantu, sho pwa dhimbululwa e na oshitalenti shokuuvitha evangeli lyomoondjimbo, a taambe oshimpwiyu shika mongerki ayihe pamwe nongundu ye yAambalantu.

Opwa fanekwa wo ihe pu totwe oshiketha sheuvitho lyevangeli lyomoondjimbo. Gumwe gwomongundu okwa tula moshiketha shoka R4.00 oshiketha nosha tamekwa nokuli ethimbo tuu ndyoka.

Otapu indilwa ayehe mboka ya hala ya kwa-the moshilonga sheuvitho lyevangeli lyomoondjimbo, ya tume iikwatha yawo komusitagongalo Matti Endjala, Eengolo, Ombalantu. Opwa uvathanwa wo kutya mboka taa uvithilwa evangeli lyomoondjimbo ya kale wo taa ningi ongalo yoshiketha shika, yo aatonateli yitayingerki naasitagongalo mu Elok, ya kale mekwatathano nomusita Endjala ye mu ithane miitayingerki yawo miigongi yawo nokuhiya nawa aakwanegongalo, unene aagundjuka naanona okupulakena euvitho.

Onawa unene ngele pe na iigongi yasha momagongalo nomiitayingerki, enenedhiladhilo lyoshigongi (oshipalanyolo) ye li tume kuyele kuEndjala ngele ya hala evangeli lyomoondjimbo li etwe moshigongi shawo, oyo Endjala a longekidhe ngashi ta pewa kOmbe-po.

M. Nghipandulua



Okomisi yaPierce muRhodesia ndjoka ya kundathana noya konakona efaneko ndyoka lya li lya ningwa pokati ka-Britania naministeli gwotango gwaRhodesia Ian Smith, ngele olya nyanyudha tuu aavalelwamo. Eyamukulo olya li kutya inali hokiwa onkene omukalo gwemanguluko lyaaludhe muRhodesia natango oshinima shilimbilika.

## Ombumbo mOwambo

Aluhe mokati kaantu mboka ya kala komeho gaantu mOwambo osho wo palwe ohaa taamba ombumbo. No ngele te tumbula aakomeho ote popi tate nenge meme pashipango oshitine melongo lyuukriste. Naayehe mboka ye li miilonga tayi utha iinima ngashi: Oofolomana dhiilonga, aadiakoni, aalongi, aayevangeliste, aapangi, aasita yomagongalo, ooyene yomikunda, aakuluntu yomagongalo, ooyene yiilongo, ooyene yomagumbo osho wo ooyene yomalukanda.

Nande ongawo ombumbo otayi longithwa nomokati kaamboka inaandi tumbula mpaka. Moongundu ndhika otaku popiwa tamu longithwa okutaambwa kwoombumbo.

Otashi vullika omuntu e na iinima yontumba inaayi opala nande, ihe ngele ta kambadhala okugandja ombumbo, nena ota uthilwa nawa iinima ye. Ezimba lya tya ngeyi otali tumbulwa tali zi mutseni mboka tu li pethimbo ndino, tatu taambeni oombumbo. Ombumbo yo yene oshinima oshikulu miilongo mbika yetu yAawambo, ihe ya kala ya longithwa mokukandulapo oshili yo yene.

Pakutala ombumbo yo yene kayi shi oshili nando, ihe oyo iifundja. Oshoka omuntu ngele a yono noina uthilwa pauyuki wokuyona kwe ohashi holoka ngeyi kutya, okwa uthilwa ashike pambumbo ndjoka a pe omuuthi ngoka a li e na oku mu uthila pashili keyono lye. Nena okwa fundjwa, oshoka oohapu ndhoka a lombwelwa odha zi owala kenyanu lyombumbo notadhi tsikitha okunongela kwomuntu ondjundo yeyono lye.

Ano ngoka ta tokola aantu yaKalunga pambumbo, oye ota fundju. Oshi li ashike ngeyi kutya: ngele aakomeho osho taa kala nokupukitha aakulilwa yaKalunga ngeyi, notaye ya pukitha yaa nongele we oshili koombinga adhihe mbali, kombinga yeyono lyo

lyene osho wo kombinga yokuza meyono nomukalo guuyuki wo wene, nena egeelo otali ya.

Mpano onda popi ombumbo kombinga yomuntu a yono, na ngele tatu tala paushili wo wene ombumbo ihayi longithwa ashike pamukalo gwomuntu ngoka a yono, aawe ohashi vulika wo yi longithwe nokomuntu ngoka inaa yona sha. Otu uvu nkene aakongli yiilonga pomahala nomahala nkene ya pulwa ombumbo, opo ya mone iilonga. Ngele nani oku na iilonga yimwe ya tya ngeyi tayi monika ashike kwaangoka a gandja sha, shoka oshinima shi shi okuuvika ko ando nokepangelo lyi kale li shi shi.

Nongele inashi tseyika kepangelo, nena aantu otaa yaka nokuyaka kwa tya ngeyi otaku kanitha uuyuki pokati kanakugandja iilonga nomutaambi gwiilonga mbyoka.

Nomugandji a tya ngeyi oti itekulile okukanyengwa okugandja sha shontumba kaape na ombumbo. Ano shino oshi li oshipanga komupuli gwombumbo, mokuimonena eliko pamukalo gwokuyaka ku thike mpano.

Nandi ku pule, ngoye omukwetu oto ti ngiini moshinima shika ombumbo tayi pulwa pamikalo dha tya ngeyi? Ope na wo mboka taa longo iilonga taya nyenyeta aluhe: lilonga mbika otayi tu hepitha owala yo yaa na ano ondjambi. Omuntu a tya ngeyi ta longo nyenyeto ki ivule naangoka ta taamba ombumbo nando, oshono ayihe mbika ombumbo nyenyeto oyi indikwa. Oshoka okwa nyolwa: Yakulathaneni omitenge nombilli no pwaa hena enyeneyeto lya sha.

Ano omukwetu omuholike muJesus Kristus, zimbuka okupula ombumbo, pangulitha oshili yo yene, oshili ndjoka tayi mangulula. Moshinima kehe pangulitha oshili nuuyuki wo wene, otayi ku kanithile ashike oshilongo shegulu. Nakugandja ombumbo, etha u ningilwe pakukala kwoye, pakutala komupulakeni gwoye muuyeleele woohapu dhaKalunga. Kelombwelo lyOmbepo Ondjapuki hakelombwelo lyasatana.

Pukulula omuntu kompumbwe ye ndjoka ye etithwa keyono tali zi meluvo lyomuyoni ndyoka ihali fundju kali shi kumwenithwa nombumbo ndele onombinzi yOmukulili.

Emanguluko lovadalelwamo voitukulwa ihapu hai pangelwa kOvapatu muAfrika ola kundafanwa neenghono moshoo-ngalele shaaveshe shaV.V.O. eshi shi li moipundi paife. Otaku tiwa kutya Epangelo laPutu otali yeulula omhito oyo oV.V.O. i tume ovatumwa va ka konakone oitukulwa oyo vo va pwilikine omadiladilo ovadalelwamo. oV.V.O. oya tokola vali neendaka dihapu kutya, ovakondjelimanguluko ava va ya pondje, Epangelo laPutu nali va tale ongovakondjelimanguluko lela, haetero-lesa.

Angola, Mozambikwe naGuinea Bisau, oyo oitukulwa i li natango koshi yepangelo lOmuputu muAfrika.

### OMULESHULULI A PUMBIWA MOSHINYANYANGIDHO

Omuleshululi gwiinyolwa omukadhona okwa pumbiwa mpaka ngoka e na ohokwe neithano mokunyola iinyolwahokololo niinyolwankundana. Na kale wo a pyokoka nawa melaka lyOshiwambo, e na onkatu yaJuniolo nenge owino wethimbo ele miilonga yuulongi nenge shi vule mpoka.

Endelela u kuthe po ehala ndika, manga ompito inayi ku kana, ngoye tuma onzapu dhoye ndhoka u na, nenge enyolululo lyadho pamwe neindilo lya nyolwa, nenge u holoke mwene nadho kOshinyanyangidho shOngerki, Oniipa, P/Bag 2013 Ondangwa.



## OU LI NGIINI NOSHILONGA SHOYE

Omwiithanwa mukwetu ngoye nomunashilonga ngangame, oho tila tuu noho kakama tuu nge ho ipula nkene u li neithano lyoye? Oulwete ngaa oontumba noongandi ya shuna molwoye sho taye ku limbililwa?

Oshike tashi imbi ndje ndi nwe nondi kolwe ngele naalongi, aayevangeliste naasita nenge aapangi otaa nu? Oshike tashi imbi ndje ndi hondele ngele lwo olwa vuka wo nomanashilonga? Osho oye ndji haa ipopile ngeyi omolwetu aaitanwa mepya lyOmwana.

Natu italululeni natango, otu li we tuu momusinda gweithano lyetweni, nenge twa ningeni ihe aalongelindjambi nomeho gaantu? Ohatu dhimbulukweni nokwiidhimbulutha omauvaneko ngoka twe ga ningile powalitali yOmwana sho twa taambelwa miilonga mbika. Kalunga ota tegelele natango tu ga gwanithe, ihe iha nyekelwa; Shono to shi kunu, osho tuu to ke shi teya.

Omwiimbi omukwetu okwa ti kuya: Ondi ke mu tsakaneke ngiini, ndi li iikaha yowala.

*Omukwiita omukweni mekondjo  
Viktoria Shituula*

## Elongekidho Iyaasitagongalo aape mOngerki

Ompumbwe ndyoka tayi tana kashona nakashona okumona aasitagongalo ya tsakana eyakulo ryantu mboka taa indjipala wo omumvo kehe mongerki sha dhiladhilwa kEpangelongerki neitulomo enene nuumvo.

Patokolo lyalyo yamwe yomaa yevangeliste ya kala ethimbo ele miilonga komukumo gwawo nokeitulomo lyawo, oya uthwa ya tameke osikola yelongekidho lyuusitagongalo okuza petameko lyomumvo tagu ya. Elongekidho otali kala omumvo aguhe.

Epangelongerki lyeti 5.9.1972, olya utha aayevangeliste aakulu 12 yamwe haa longo mUushimba nayamwe mOwambo, ya ka kale melongekidho ndika. Shoka osha ningi eyamukulo lyompumbwe ndjoka ya dhiladhilwa kEpangelongerki ethimbo ele. Elongekidho ndika itali ka kala pamwe naasita taa putudhwa mOsikola yuuteologi yuukumwe mOtjimbingwe.



*Aapangi yomoshipangelo shaKahandja otaa kunditha aanashilonga ooyakwawo noku ya halela Okrismesa ombwanawa.*

## OKRISMESSA KOVAYAKULI VAKWETU

Mokukala kwange konima yeedula omulongo, onda dimbulukwa nonda koneka oudjuu womoshilonga nonghee tau hange omunhu. Ofye ovanashilonga mepya lOmwene otu neni oshilonga shinene, sha fimana tashi tu pula eenghono domhepo nodokolutu.

Nde kombinga imwe ohatu hambelele eshi tu na omhito ya tya ngaha okuudifila ounyuni u shiive Kristus kutya oye omuxupifi wayo Joh. 3:16. Onye ovafitaongalo ovahongifikola, ovadiakoni, ovahakuli, ovaevangeliste nookaume ketumo amushe, kundweni nelaka lOkrismesa "Ombili kombada yedu kovanhu e va hokwa."

*Omudiakoni Simon Namunyekwa, Okahandja*



*Omulongi Viktoria Shituula, Okahao*

### Okuvalwa kwaMesias

Pethimbo ndiyaka oshilongo shaRoma osha li tashi pangele lilongo oyindji ya li ya tseyika ngashi haa ti: "Uuyuni auhe." Omukesari okwa li a yalulitha uuyuni mboka we opo aalumentu ayehe ya fute oompale. Kireneus okwa li a langekwa miilonga yelelo komukesali, haye kwa li mwene gwoshilongo shaSiria.

Maria ngo ethimbo lye lyokuvala kwa li lya thikana, okwa yi nomulumentu gwe keyalulo Mat. 1: 20-21. Josef mwene okwa li muNasaret omo mwa li lilonga ye, ihe egumbo lyaandjawa lela olya li muBetlehem. Ihe moka nando omo moshilongo shawo, ina tseyika mo nawa, omolwashono okwa ka ko-

## EDHINA LYOYE NALI TSIKILE OKUTAAMBA OMUKWETU? TU LOMBWELLA ANO MBALA.

nga eha moongulu dhaayenda.

Jesus okwa vaelwa mokakololo komondu ndu okashona haka longithwa okulala iimuna nomulangeli gwayo. Omwa li wo etemba lya hokelwa memanya, oloyo lya ningi ombete yokahanona. Josef a yakula omukulukadhi gwe ongomuvalichi.

Okuza kuBetlehem nokuya lwokuuzilo okwa kala esilu lyaasita mboka ya litha iimuna yawo. Aantu mboka oya kundana tango evalo lyokanona, Omukulili. Pautho lyaKalunga Mesias okwa pewa edhina Jesus (Omuhupithi) ngoka e ya mongundu yoshigwana she a vulike kuKalunga mwaayihe.

### OMUKWETU

Oshifo shOngerki onkwaevangeli paLuther yomOwambokavango  
Die Nuusblad van die Evangeliese Lutherse Owambokavangokerk  
Ohashi nyanyangidhwa mOniipa,  
Omukuluntu gwoshifo/Hoofredakteur omumbisofi Dr. Leonard Auala,  
Amushanga/redakteur Rev. Sebulon Ekandjo  
Ondando yoshifo komumvo muSuidwes-Afrika R1.00, kombanda yomafuta R2.00.  
Ondando nomambestelo naga tumwe kOmukwetu, Oniipa, P/B 2013, Ondangwa, S.W.A.

Matseyitho gomuntu mwene pashinyolwa shuule woondeimi	1	otashi futwa R1.00
oondeimi	2	otashi futwa R1.90
oondeimi	3	otashi futwa R2.70
oondeimi	4	otashi futwa R3.40
oondeimi	5	otashi futwa R5.00

Oto vulu okutuma wo efano lyaashono wa hala shi tseyithwe.

Owambokavango Church Press  
P/B 2013 Ondangwa, S. W. A.