

OMUKWETU

Registered at the General Post Office as a Newspaper

OOKUUME KETUMO MUUNINGININO

O mimvo ndhika ndatu okuza komumvo 1968, oshitayingerki shetu otashi pandula aayakuli yasho mboka haye shi koleke opo shi longe oshilongatumo. Ote tumbula mpaka omakekenye goshitayingerki ngoka tagi ihepeke shili.

Aambawe: Ohaku zi iipakete ya fofenya ya thindwa nohayi tumwa kumeme Kaarina limbili,

Anna Tshuveni
Viktoria Atshipala,
Helena Kati,
na Tuutaleni Uugwanga.

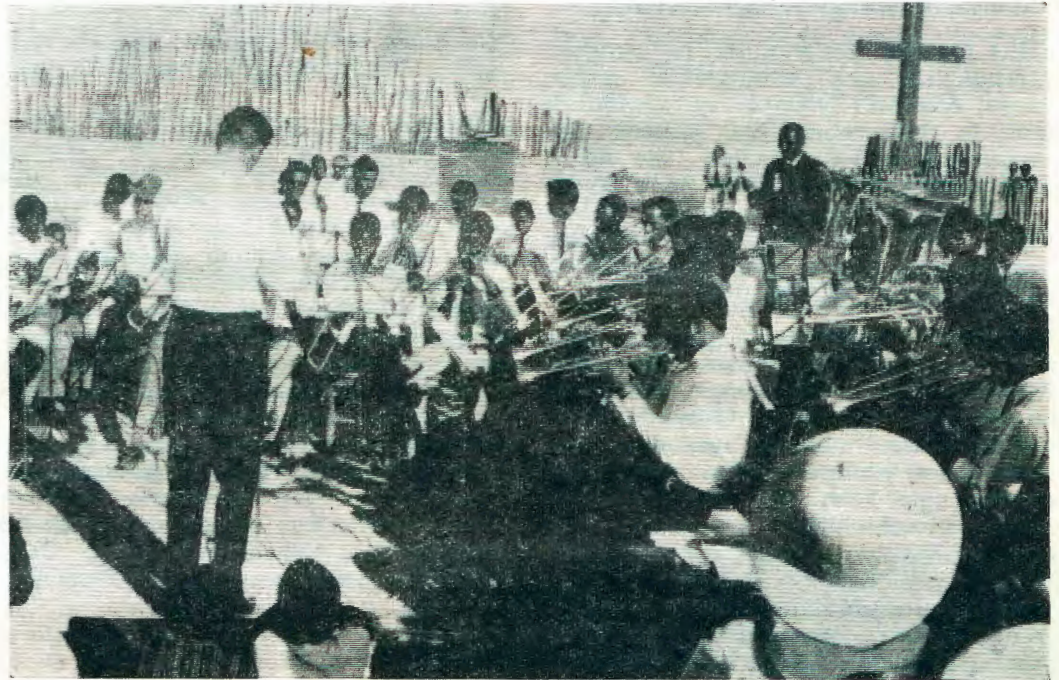
Aavenduka: Oya tumu oshipakete mewiliko lya Andreas Shaanika yo Aakahao taa gwedha mo ishewe.

Moshitayingerki: Aathika, Aaniimwandi Aagongo, Aanawa, Aanaanda, Aanangalo oyo ya tsa pombanda meyakulo ndika.

Yalwe: Aakagumbo aakwaluudhi oyo haa kondjele omapyatumo nokutuma iikwatha yokolutu.

Aaseminari ya Kahao oyo wo taa ningi ongalo nokuyambidhidha ngeyi etaandelo lyoohapu dha Kalunga li aadhe kokule.

Omagongalo gomuuninginino otaga ningi shaa shoka taga vulu, opo evangeli li uvithwe. Taimi Shiyagaya,



Loide lilende,
Ester (Shiyagaya) Tshikongo,
Magdalena Shiyagaya,
Lahja Hosea,
aangandja Kleopas Dumeni,
aangandja Mika lilonga,
Aatsumebe,
Aanakayale,
Aatsovanatse,
Aatoto,
Aayelimi,
Aagundjukangerki,
naapangi,

Matti Seppälä naahongi Aasoomi ayeshe mbaka oyo ookuume ketumo mUuninginino. Aatekuligumbo mEngela meme Helena lime-ne kOkankolo, Aaheke kOndonga, meme Lydia Urho amushe onda tsoongolo ndee tii mu totomonene Kalunga te ti:

Kalunga kUukwaale Kwath' aamweye ayehe. Ya gongelel' etumo. Ye li p'omagano. Mpo pwa zi ya p'ishewe. Ya yambek' ishewe.

Aakwetu ya Nankali yUupongo, Kalunga ke shi omugoyokithi a dhimbwe ando iilonga yeni iiwanawa!

Otandi mu halele eyambeko lyOmuwa gwetu Jesus. Jason Amakutuwa

MEngela 14.11.61

Nenyanyu ite zi mo mEngela
Nda li nda hokwa mo
Omuwa gwandje nda longela
Nda li nda panda mo

Koor: :: Nda li mo nda panda::
Omuwa a kwatha ndje.

Nenyanyu ite zi mo mEngela
Mwenyo gwa pongola
Etopoko li lilitha
Li ziyalalitha

Koor: :: Nda li mo ...

Nenyanyu ite zi mo mEngela

Nda li menongelo

Oomvula hetatu konyala

Nda li menongeko Koor: :: Nda li mo..

Mwa dhimbwa ko kOmandongo?

"Nyanga nando funda, okwena okwanyenti." Omwedhi nguka otu na ompito yoku-dhiladhila etumbulo ndika twe li lombwelelwe komusimanekwa kuku Sakeus li-huhwa kOmandongo.

Netumbulo ndika oto vulu okwiitangela uuyuni to longele mo oshilongatumo nando u kale tau tumbatala wa fa u ku yule nowa fa u vule evangeli to li popi, kutya nau ndundume, okwena okwanyenti.

Paulus ta ti, ngoka te li uvitha lya pilama na tulwe omutima nando na kale omuyengeli.



Ongerki nomaxupilo ayo

Epangelo IyaKristus mOngerki nomoshilongo

Omukriste kehe oshe mu yeleda kutya, tse otu na okukala tu li koho yepangelo lyontumba, ongele olyaakuluntu yetu, lyomalenga naakwaniilwa, Iyaagandji-yiilonga, Iyaalongi yetu, nosho tuu.

Ihe Omuwa wo oye ote tu pangele. Nomukriste ota ndhindhilike nuupu kutya, epangelo Iyaantu ya tumbulwa inali fa IyaKristus, ihe onkene tuu omukriste ka vulu okutya, sho ndi li koho yepangelo IyaKristus, nena kandi na sha we nepangelo Iyopantu. Nopo mpaka tatu itsu muudhigu wokukala nomapangelo ngaka noku ga gwanithila shimwe shoka tage tu pula.

Epangelo IyaKristus nepangelo Iyaantu ohaga talikila ishewe muyelele wiilongo iyali; Oshilongo shongerki noshilongo shuuyuni. Omundohotola Martin Luther melongo Iye, okwa ye-litha nawa iilongo mbika iyali, ihe onkene ngaa kashi shi oshipu okulandula omadhiladhilo ge nkene iilongo mbika te yi topola nenge te yi tala ongoshinima shimwe.

Moohapu dhaKalunga otatu dhimbulukwa Kalunga nkene ta popitha omuntu pamikalo dhopaali dha yooloka. Kalunga sho ta tseyithile omuntu ehala Iye moku mu pa oveta ndjoka omuntu e na okuvulika kuyo. Naampoka omuntu inaa vulika kuyo okwi ilongele egeelo edhigu. Omulunde ta sile oondjo dhe.

Ihe kombinga onkwawo, Kalunga oye tuu ngoka ina hala nando omulunde gumwe ta si, ihe ando i itedhulule nga opo a hupithwe. Omolwashoka a tumu Omwana Jesus muuyuni wetu opo e tu uvithile onkundana yenyanyu kutya, kehe tuu ngoka te mu itaale, ita kana, ihe ota mono omwenyo gwaaluhe. Ombinga ndjika ohatu yi ithana Evangelii ndyoka Kalunga ta popitha omuntu nalyo.

Ano evangeli noveta ayihe iyali oyo oohapu dhaKalunga, ihe kehe shimwe oshi na oshilonga shasho shi ikalela noshi na enwethomo momuntu Iya yooloka thiluthilu kombinga onkwawo. Eyooloko ndyoka Iyoombinga mbali oyo tali tu uvitha ko kashona eyooloko Iyiilongo iyali.

Dr.M.Luther okwe shi endulula olwindjilwindji kutya, ngoka e li kombanda yiilongo mbika iyali oKalunga ngoka ta longo mukehe oshilongo. Moshilongo shuuyuni omu na eshito kehe tu li lwete nomeho nenge katu li lwete nokuli. Mulyo omuntu okwa simana e vule ayihe nota kwatathana naanegumbo Iye, naakwazimo Iye, naakwashigwana she nenge onaantu yoludhi Iwe. Ota kwatathana wo noshilongo she nepangelo Iye.

Ngashi Kalunga okwa gandja komuntu oveta moka a holola ehala Iye, osho shoka tashi tula eshito alihe koho

Ngenge taku popiwa elelo leumbo laKalunga itaku diladilwa ashike eshikulafano lomafaneko oilonga yopamhepo ndelene omwa kwatelelwa yo osho tashi likolwa kongerki, nhumbi tashi likolwa nonghee tashi diininwa.

Oshishangwa tashi shikula apa oshinhoko sha kufwa mehokololo lomufitaangalo Olof Joelson. Ehokololo eli ola ningwa eshi oshikandjo shelongelokumwe leengerki adishe mOngongahangano yOvakwaLuther (LWF) sha ninga ekonakono lomaxupilo nhumbi tali ende meengerki neengerki 1969. Noshishangwa shaye o-tashi tandavelifwa meengerki adishe eenghwaLuther mounyuni.

Omaxupilo ongerki okwa fikama peni? Okupopya omaxupilo ongerki onda tala oshwa ngeenge handi popi kombinga yee-ngerki di li mekoko manga ngashi nde di talele po muAfrika nomuAsia. Omunhu oto hale kutya, ashishe mwinya omalihepeko ongaho. Omalikolelo avo omaxupi lela kashi fi ku tongwa.

Eengerki odo otadil ongo mokati kee-hepele, onghalelo yamo oidjuu, kai na eteelelo lasha Kombinga imwe ovo otava ningi ngaa ovaudifi vawa, ovawiliki vawa vovanyasha, ve na oshisho shiwa shonghalafano. Eefikola otadi filwa nawa oshisho shevangeli, osho yo ovapaani momaushiinda avo otava fikifilwa evangeli. Omafaneko yo oilonga ya kula neeprograma dikwao ngashi da hovelwa kovatumwa oda ninga ombinga inene yomutengi womaxupilo meengerki odo tadi kulu natango notadi likwafa doovene.

Otu na oku shi itavela kutya, shihapu oshi na okuningwa natango. Eshikulafano lo-paife moilonga yongerki moinima ihapu kali hafifa nande. Fiyo opaapa inatu ninga sha shiwa ile inatu shikulifafanifa nawa. Otwa mangwa keendjikilile detu, keemifyuululwa-

kalo notwa mangwa koku hee na omukumo okukatuka eenghatu dipe nokuninga omato-kolo mape.

Eenghendabala odo da ningilwe ngeno o-kweeta omwenyo mokupangela eengerki no-mokutunga omukangha wa kola womaxupilo, oda imbwa ile da tokelifwa komatomhe-lo taa shikula apa:

1. Ohaku lipulwa ngeenge onghedi ei tai longifwa paife okulela ongerki oyiwa tuu. Osho yo eenghedi dediinino lomambo oini-we, dokwoongela oiyandjiwa, deshikulafano loilonga nodenangeko lovanashilonga ile odomatote po omaongalo mape ngeenge odiwa tuu shili.

2. Etomhelo likwao hali tokelifa eeheno-komesho leenghatu odo da ningwa po oungone wehongo eli tali yandjwa kwaavo tava ka humbata ewiliko longerki komapepe avo ile lomaongalo. Oshe lifatula shoovene nale kutya, ongerki ihai dulu okuyandja eemhito domalihongelo moshinima shonhumba omolwondilo yasho. Oshiwa shili ngeenge tu tye, nande omudiinini woiniwe ta longo oshilonga osho pamaano aye, ndelene okwa li shiwa neenghono ngeenge ta monifwa o-uteku washa moshilonga osho, opo omaano aye a wedelwe.

3. Etomhelo etitatu olo eli kutya, nande nee omuyakulingerki oo okwa mona kanini ehongo nomakwafu amwe e mu dila komutumwa oo e mu pa oshilonga osho, okwa li shi na okudimbulukiwa kutya, nomutumwa oo ye mwene ina mona pamwe outeku washa moshinima osho. Eshi onde shi mona kuame mwene. (Joelson),

Omapangelotumo ile Omahanganotumo oku na omaudjuu aa ngaashi e niwe yo kovatumwa oomwe noomwe. Oshinyakula neenghono ngeenge taku hovelwa netungo nande lofikola tai ka ninga osho tashi ka monika, tashi ka udika ile tashi ka talika nonghumwe konakwiiwa, shi dule okutungu eshikulafano lokudeulila oilonga yewiliko longerki.

Metulokumwe lomadiladilo oshishangwa omu na omadiladilo aa: Omuhokololi okwa yandja unene omufindo komaudjuu e li meengerki tadi kulu natango. Omaudjuu aa okwa tala kutya, okwa etwa kOmahanganotumo.

Otashi dulika tuu eengerki di humbate omitengi edi? Kashi fi mbela oshilonga shomatumo okukwafa mokuhumbata omitengi edi ile okukwafa okuninga omafaneko mape okuwilika eengerki opo ku monike omahanganano taa wapalele oilonga ei mefimbo eli lipe?

Eyakulafano momaudjuu

Umwe naye kwa li e na elalakano lokumona omukangha muwa womaxupilo ongerki okwa ti kutya, ngeenge eengerki hadi likwafa doovene tadi yandjwa momake eengerki adishe mounyuni, ovakriste meengerki odo tadi kwafwa otava ka kanifa shihapu.

Ashike osho nee shi li po oshilalakanenwa

Tala kep. 3



yoveta yaKalunga. Ihe inatu dhimbweni oshilongo oshitiyali shono twa ti kutya, oshaKristus shono tatu shi uvithilwa mevangelii. Moshilongo shika eitaalo, esilohenda, nekulilo otayi pangele, haoveta nando.

Oshisho shomukriste keshe osho oshokufindila Kristus eemwenyo

Oukriste u nomwenyo itau dulu okumwena. Haomikalo dongerki dopatradisie ile deshikulafano ile olupe lelongelokalunga ile pahapu yoilonga noyoivilo n.sh.t. tashi dulu okukelela oukriste u nomwenyo uha konge ovanhu ovo tava pumbwa ekwafo. Kashi fi shaKristus, kashi fi oshilonga she-shina, ahowe, oshOmhepo yaKalunga.

Omhepo ei tai linyengifa omeva eenghono daKalunga mokukalamwenyo kwomukriste. Joh.7:38 Apa Jesus ta hokolola kutya meni lomukriste keshe ohamu di omilonga deenghono daKalunga nde tadi fiki kovakwetu ovo va fya enota. Oshinima shinene noshotete mokukala kwomukriste e nomwenyo kokutya ta tambula osho Kalunga ote shi mu pe. Nde oshitivali osheshi: "Oye ta tukulile ovakwao osho ye mwene okwe shi pewa. Hesekiel ta hokolola oshinima shomeva omanamwenyo nosho yo osho shomalambo oo iha yandje, Hesekiel 47:9-12.

Otu na okudja meenduda detu nokuya pondje nokutandavelifa osho tu shi kwete. Lesha yo Mat.10:39. Eeno, ofye ovanashilonga moshisho shokufindikila eemwenyo kuKristus. Osho tashi pula ashisho shetu, ndelene, "Oshilonga tashi ehenifa komesho oundjoloweke nokukala kuwa nde tashi kelele oulunde uha mone eemhito mufye." Omufaula ta wile moiponga youlunde e dule ou okwe litula moilonga.

Moshilonga eshi shokukwafa ovanhu va mone Kristus omunhu mwene, omunashilonga, ta koneke sha shipe. Osho ofikola inene nokuli kuye, osheeshi mokupwilikina o-maudjuu ovakwao oye ta koneke nhumbi oulunde u na eenghono momunhu, ndelene ye ta mono kutya eenghono daJesus odo di dule eenghono domutondi. Nosho tashi mu pe omukumo okutwikila a twale ovakwao kuKristus opo va manguke moupika womotondi. 2.Kor.5:14, 1.Tim.2:4.

Otwa didilika nokuli kutya ovakwetu tave tu pumbwa moshilonga eshi. Nande ope na eengerki neesinagoga ile oku na ovafita novaevangeli novadiakoni nde nande tava fatulula eendjovo daKalunga ile eendjovo daKalunga tadi popiwa moradio nomoifo nomomambo e lili noku lili, natango oku na ongudu inenenene yovanhu i li pondje yee-djovo daKalunga. Vamwe aveke tava ongalamoshongalele keshe va pewe sha nefiku limwe va kuta nokuli. Novanhu vahapu ve li mouhamba wavo, mokuhashiiva Kristus nouyadi weenghono daye.

Olyelye te va evangelifa. Ha omwevangeliste wongerki oye aeke ile ovaningi voivikembibeli momaongalo. Ovo itava wana ovo aveke. Ohatu pumbwa okulonga omunashilonga keshe nomukriste keshe nokuli va shiive okufindila. Kristus eemwenyo.

Okusimokola Ombimbeli, otashi eta uupyakadhi

"Okufala Ombimbeli miilongo yaakomunisi mofuthi, itashi popilwa nando komahangano gokunyanyangidhitha Ombimbeli," Omusitagongalo Ulrich Fick, omunashipundi gwEhangano lyOmbimbeli muNdowishilanda osho a popya.

Metalelopo lye muAmerika, omunashipundi Fick okwa ti kutya, okufala Ombimbeli miilongo yaakomunisi nomukalo gwiineya, otashi pendutha ashike uupyakadhi ongele kungoka te shi ningi nenge kwaamboka taa

Ongerki nomaxupilo ...

da dja kep. 2

shoukriste va kale tava kwafafana momaluhupo nokuhumbatelafana omitengi davo. Eya-kulafano momaudjuu kali na ku dimbiwa po nande.

Itashi dulika eyakulafano eli li wilikwe panghedi iwa ipe? Ndi tye nande ku dikwe oshikefa sheyakulafano (Sharing fund) opo shi longe panghedi oyo kutya, eengerki tadi pewa mo shihapu shi dulife osho eengerki tadi yandja mo.

Meni longerki imwe omaongalo omayamba ohaa kwafa omaongalo a hepa. Omolwashike itashi ningwa yo panghedi ei keengerki adisho mounyuni? Oounyuni ou na okulundulula omadiladilo ao mokushiiva kutya, shinya oshiiwa komukwetu.

Eedjo domaupuna ngeno di kungulukile mumwe, osheshi nokuli kadi fi detu ndelene omaano aKalunga kufye atushe, a longifwe kumwe.

Ouleliumbo laKalunga

Mokati koinima imwe oyo tai dulu ku lulundulula emona longerki, ouleliumbo laKalunga nge tau udika ko pambibeli. Eshi osho efina laashisho. Mokukonakona eshi onda tomhelwa filufulu kutya, osho tashi dulu okulundulula oungone woiniwe yongerki osho ngeenge ovanhu mongerki oyo tava hongwa

nokutekulilwa va ude ko elelo leumbo laKalunga.

Ongerki keshe oya li ina okuninga evalulo loilonga yayo moshinima keshe, opo i tule natango meshikulafano omafaneko omudo tau ka shikula, ko ku talike nhumbi omafaneko aa taa shakenifwa.

Oshilongatumo mongerki

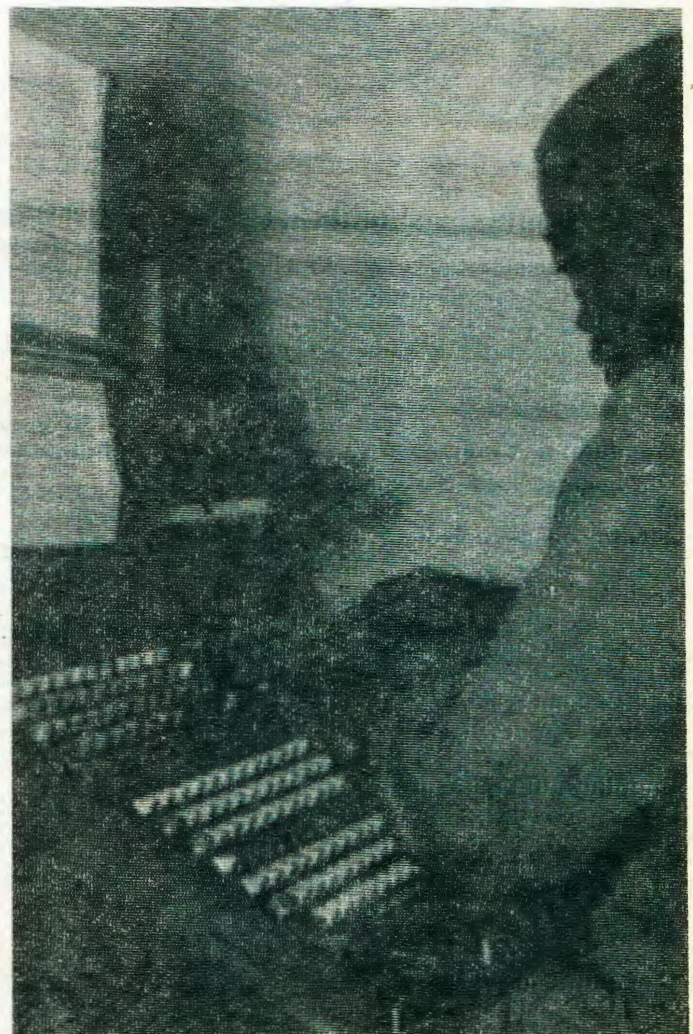
Ongerki nOmapangelotumo ile Omahanganotumo naa longele kumwe mokutala nexwamo efimbo lopaife evangeli nhumbi tali tandavelifwa. Oshinakuwanifwa sheudifo kovapaani inashi talikila ashike kutya, oshinima shovatumwa, sho inashi efelwa ashike ongerki oyo va dalwa ketumo olo.

Oinima tai shikula apa onda tala otai etifa po omufika muwa kombinga yemona longerki:

a) Oshilonga shelelo leumbo laKalunga ngeenge tashi longwa nawa nomafaneko ma-wa oilonga mongerki.

b) Eyakulafano ngeenge tali hapupalifwa neemhangela diwa doilonga ngeenge tadi ningwa osho yo elongelokumwe nOmapangelotumo ile nOmahanganotumo.

c) Okuliyandja moilonga shi dule shito nokufaneka nokuhapupalifa eshiivo lelelo leumbo laKalunga movakriste oomwe noomwe momaongalo aeshe mongerki oyo.



Aauvithi yevangeli haa-yehe tatu ya adha miiuvithilo, ihe oku na mboka ya kuutumba ashike mii-kololo yoondjugo, ihe otamu longwa iilonga iinene yetungo lyomuntu. Omusamane Tomas Auene, peshina ndika nuumvo okwa nyanyangidha po omambo ge thike lwopomulongo. Oshifo shOmukwetu itashi popiwa shono tashi piti moshinyanyangidho o-mwedhi kehe.

"Oompadhi odho opala ngiini dhaamboka haa uvitha oonkundana oombwanawa." Jes. 5:7.

taamba Ombimbeli ndjoka.

Omusamane Fick ota tengenekwa kutya, siku limwe oye na ka kala amushanga omunene lela gwehangano lyomahangano agehe gokunyanyangidha Ombimbeli. Ota ti kutya:

"Nando osho oshinima oshidhigu, tse otatu indile ashike iilongo yaakomunisi yi tu

pitikile tu yi etele Ombimbeli nenge yi tu pitikile tu yi nyanyangidhile miilongo yawo ngaashi olwindji sha ningwa."

Omusimanekwa Fick, okwa dhimbulula nkene omalundululo ogendji gomiilongo mbyoka ga kulupa nokage na we elaka ewanawa lyopashinanena.

OMWA LALA PO TUU MEME? OTU NA OSHIMELA, IHATU LALA PO NAWA!



Oshimela shombinzi

Oshimela shombinzi, uuvu mboka tau holo- la ombinzi nomakakamena monyata nuuwe- hame uudhigu mela. Oshimela shombinzi tashi vulu okweetwa koombuto nenge kuu- puka, onkee tu na oongundu mbali moshimela shombinzi.

Ongundu yotango

Ongundu yotango oyoshimela shoka tashi etwa koombuto (Ba cillere dysenterie). Oombuto tadhi hiti molutu mokana. Omuntu ta nina oombuto. Oombuto ndhoka olwindji otadhi monika nuupu momeya miikulya, unene iikulya ya yonuka. Noshu wo oondhi tadhi taandelitha noonkondo oombuto. Iikaha Inayi yogwa nawa tayi fala nuupu oombuto mokana nosho wo iiyaha nuukopi tau vulu okunyateka iikulya.

Iindhindhiliki yuuvu:

Uuvu tau tameke ombadhilila. Ela tali endebele okulonga na olwindji monyata mu na ombinzi, omakakamena nenge ontsika nokuli. Onyata tayi nika nayi. Nomuvu te ehama mela.

Ongundu ontiyali

Oshimela shuupuka oshi li mongundu ontiyali yoshimela shombinzi. Uupuka mbuno tau zi momeya, unene omeya ngoka taga zi moonombe, momadhiya, momatale ngele inaga fulukithwa. Noshu wo oondhi tadhi taandelitha uupuka mbuno uushona. Okapuka nkoka hatu ka ithana nedhina ekwiilongo "Entamoeba histolytica" "nenge "ameba".

Oshimela osho oshindhindhiliki sha sima-

na. Monyata ombinzi tayi monika osho wo omakakamena. Onyata oya yula unene. Omuntu ta vulu okukunga wo, unene aanona. Tashi vulika omuntu a kwatwe kuu- vu wehuli, oshitumbuka shehuli nokuli omo- luupuka mboka ngele inai pangwa.

Olye ta kwatwa nuupu koshimela shombinzi?

AANONA? eeno, aanona otaa kwatwa nuupu ngele itaa paluthwa nomahini gayina. Omahini ngoka ga kala ethimbo ele ga pilulwa sigo go ota nenge ga pilulwa nomeya inaaga fulukithwa nenge momakende negundji mu noombuto, taga eta oshimela shombinzi.

Uuvu mbuno u nomukwayu, tashi ti aantu taa ehama uuvu woshimela, otaa taandelitha nuupu oombuto nenge uupuka kaantu aa-

kwawo unene ngela itaa sile oshimpwiyu oonyata niinima ya nyatekwa koombuto niikaha. Aakuluntu otaa kwatwa kuuvu mbuno wo.

Oshimela shombinzi otashi keelelwa ngiini?

Ope noompito oombwanawa okuninga, opo waa kwatwe koshimela shombinzi. Ou noku- fulukitha omeya shili, opo aanegumbo lyoye taa nu omeya ngoka ga fuluka. Tamu ikee- lele okulya iikulya ya yonuka. Iililomwa nayi yogwe nomeya omapyu nothewa ontshona yo nayi siikilwe nawa. Unene tuu iikaha nayi yogwe nawa pethimbo lyokukwata iikulya osho wo pokulya.

Iikulya niililomwa to yi siikile nawa, opo oondhi dhaaye yi nyateke noombuto. - Iililo- mwa yuunona ngashi omagundji nomakende naga yogwe nawa go naga fulukithwe lela. Osho ngeyi to vulu okudhiginina uundjolo- wele waanona yoye noku ya gamena koombuto dhomavu gi ili nogi ili. Sho to palutha okanona ou na okuyoga iikaha yoye nomeya nothewa. Uuyugoki otau kwatha unene. Shoka twa popi mpaka osho omaludhi go- shimela nkene tashi etwa koombuto nuupu- ka. Tashi keelelwa kuuyugoki unene iikaha niikulya niililomwa nokufulukitha omeya.

Saara Nekomba

Aanandjokwe pandulweni

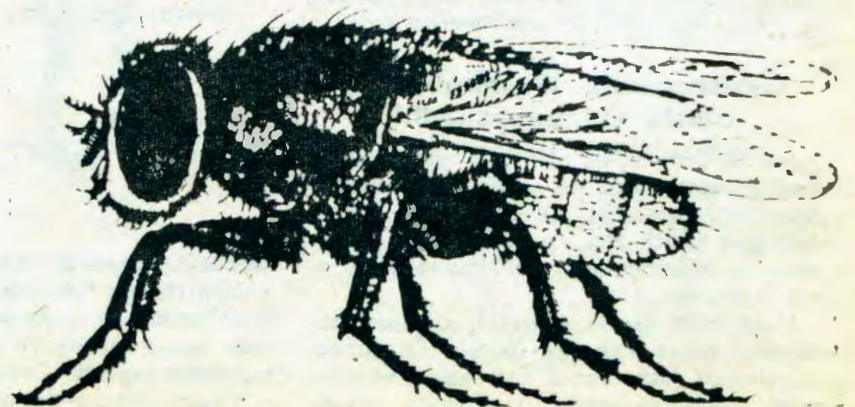
Ngame kandi shi oku shi popya shono nda hala, ihe one oondohoto- la, aapangi naayakuli amuhe yomo- shipangelo shetu shaNandjokwe, Kalunga ne mu zaleke aluhe oon- kondo oompe, opo mu kale inaa- mu pumbwa sha.

Inamu vulwa oku tu yakula, na- ndo olutu talu loloka, opu na gu- mwe ihaa loloka. Moshikaha she mu na oshishani oku shi pa mbo- ka yi idhidhimike. Tangi kwaayihe hamu yi tu ningile.

Linda N. Kalipi, Elim

OONDHI ODHO AATAANDELITHI AA-

NENE YOOMBUTO DHOSHIMELA



Omapulo nomayamukulo

Johannes Nangolo, Ombawe, linamwenyo otayi hulile meso?

Ombimbeli itayi tu yelithile nawa kutya, otayi uka peni ihe otu shi shi muuyuni kamu na sha tashi kana, ayihe oyomuYe noya za kuYe e tayi shuna kuYe.
N.S.K.I. Kangombe, Oliindili: Ongerki hayo egumbo lyaKalunga?

Osho, oyo egumbo lyaKalunga.

Omusitagongalo hi itaale iifundja e yi lombwelwa nando omuntu ou lwete kutya iifundja?

Ongweye owala u na iilombo.

Omolvashike egongalo tali itaale omukadhona a lundila omumati epunda?

Owa hala nee li patane omukadhona? To popi nena iilombo.

Omolvashike okakadhona taka ti ela kali shi lyangandi, ihe egongalo inali hala okwitaala?

To lundile egongalo taa! Omukadhona oye e shi ngoka a kala naye, hagongalo.

Omolvashike egongalo hali thiminike nando inali shi mona?

Ngoka ha holeke oondjo dhe oye kee na elago.

Omolvashike egongalo hali ti omukadhona na tumbule owala ngu gwotango, omutiayali ina popiwa?

To itaale nena omadhiladhilo goshisatana ta!

Nena nandi kondjele nee epunda lyo taku tiwa kali shi lyandje?

Inashi ningwa, gandja ombange meengwe u popya ta!

Otu na oombila dhaaihempululi aakuluntu taa kanithitha oyana ya lundile yalwe.

Onawa, opo dhi ninge oonzapo yeni. Omukadhona ngele okwa ti, ela olya Nima ihe nani okwe mu lundile, ndee ta popi nee oshili ta ti, olyaNtumba, nando na kale moshili oto yamukula ngiini mpo? "Kaleni aayapuki, ngashika ngame omuyapuki," osho Kalunga ta ti.

Jason Amakutuwa



Ehangano lyaaniilonga Aawambo

Epangelo lyOwambo kali shi nando okutalwa ongongundu (party) yokukalela po uuwanawa waayunguli Aawambo, onkee onakuyiwa nayi tote po ehangano lela lyontumba tali kalele po aalongi ayehe, li na aawiliki yalyo kaye thi epangelo.

Shika osha popiwa komusamane Enno Harms, omupresidende gwehangano lyomalanditho mOvenduka.

Omoluumbanda woshipotha oshitiyali shaayunguli tashi vulu okuholoka natango, omusamane Harms okwa ti kutya, ombelewa yiilonga ndjoka ya dhikwa po ngashingeyi, otayi vulu okutalika nokuuvika ko ongaSwanla omupe notashi ka fala natangomokwaanambili.

"Tse otwa hala ashike ekalelwopo lyaaniilonga lya yela ngashi tali pulwa apehe, kutya, ngashi aalongelwa ye na ehangano lyawo, osho wo aalongeli ya kale ye na ehangano lyawo." (Trade Union).

Epangelo lyOwambo kali vulu nande okutalwa kutya, oli lile po aayunguli nuwanawa wawo.

(Advertiser)

Omakotadhiladhilo melongelokalunga

Elongelokalunga lyopakriste otali lalakanene li pangelwe komanenedhiladhilo ngaka:

1. **Oshili:** Oohapu dhaKalunga odho tathi kala oshitsa shopokati ndhoka dhi li oshili yo yene. Omuliturgi negongalo oye na okukala koshipala shaKalunga mOmbepo nomoshili. Elongelokalunga nali opalathane nehempululo lyeitaalo lyegongalo nenge lyongerki. Elaka ekwiilongo kali shi okulongithwa melongelokalunga, oshoka oshikalimo shomelongelo oshi na oku uvika ko kwaayehe.

2. **Emanguluko:** Omuliturgi na kale inaa mangwa, eshi okweeta wo sha e shi pewa kOmbepo tashi vulu okutunga egongalo. Egongalo otali vulu wo okulundulula elandulathano lyelongelokalunga lyalyo li kale lyo opala. Kombinga yimwe egongalo kali shi okuthimnikwa okutaamba omalunduluko gelandulathano ihe oli na okulongwa nokupukululwa li zimine omalandulathano taga pumbiwa.

3. **Ekwatathano:** Elongelokalunga otali ningwa pamwe, egongalo alihe tali longo pamwe. Ekwatathano pokati komagongalo gomongerki yimwe otali monika mefaathano lyelongelokalunga lyegongalo kehe. Osho wo taku talwa ekwatathano li li pokati koongerki dhilwe, ngele pahistoli nokuli. Osho taku monika melongelokalunga ekwa-Luther mwa taambwa ashilhe shomelongelokalunga ekwakatooli inashi kondjitha Ombimbeli.

lituthi tayi dhimbulutha iiningwanima yehupitho

liningwanima mbika otatu yi adha wo mehokololo lyomumvo gwongerki. lituthi mbika otatu yi adha momathimbo gatatu gomumvo gwongerki notatu yi ithana omatango omanene.

1. **Okrismesa:** Moshituthi shika shaKris-mesa otatu adha mo wo ombinga ndatu

nenge omathimbo gatatu. a) Ethimbo lya Advendi, ndyoka haku tiwa Eyo lyOmuwa b) oshituthi sho shene shaKrismesa c) nechimbo lyaEpifania nenge esiku lyaapagani

Ethimbo lyaAdvendi olyo wo hali tameki tha omumvongerki, nomo moka egongalo tali ilongekidhile okudhana Okrismesa. Omasiku gaAdvendi oga dhanwa mongerki okuza nalenale pehulilo lyethelemumvo etine.

Esiku lyaKrismesa ongerki oya tameke oku li dhana omumvo 350 lwaampoka, tango muRoma nomukalo nguka gwa taandele nziya muEuropa alihe lyokuuninginino. Olyo otali tameke eti-25 lyaDesemba notali hulu mesiku lyaEpifania.

Esiku lyaEpifania lya dhanwa omolweholo lyOmuna gwaKalunga monyama. Olyo eti-6 lyajauuali. Epifania otashi ti ehologo, onke hali kwatakanithwa wo naapagani sho ya holokele taa kongo Jesus.

2. **Opaasa:** Oshituthi shika oshikulu no-sha simana komeho giituthi yilwe yongerki. Oya fa ya dhanwa nokuli muuyuni wAaya-postoli 1Kor. 5:7. Momasiku ngaka omu na wo omasiku gaali, lyotango opaasa yomushigakano nopatiyali opaasa yeyumuko.

Aakriste okuza petameko lela oyi idhilike iikulya nokuya moluhodhi lwashili omolwoondjo dha li dha hepeke Omukulili. Aakwa-Luther wo nando inaa iidhilika iikulya, ya dhana omasiku ngoka geitedhululo. Opo hugunina taku landula etililo.

3. **Etililo lyOmbepo Ondjapuki.** Oshikalimo otashi yelithwa nawa membo lyililonga yAayapostoli ontopolwa ontiyali.

Oyo haye tu yakula mOshaanda



Omuyevangeliste Sakaria Nashongo (45) okwa tameke oshilonga shoka 1962 sigo onena ota mbwangula. Ye konima oku na ko omimvo dhuulongi 1954-57. He yaanona 7, omusamane Nashongo ohu uvitha evangeli moofaalama nomOshaanda sho shene.

Egumbo lye nali gwile omayambeko gaKalunga.

Eihololo lyaKalunga muuzilo wOndonga

Mokati kAayelee mboka ya tula muuzilo wOndonga ye thike konyala po-300, ngashingeyi mokati kawo omu na aakriste 72. Naashika osho iiyimati yaatumwa natango ye na omwenyo taa longo mokati ketu. Osho sha leshwa mehokololo lyomutonateli gwoshitayingerki shOndonga.

Moshigongi shoshitayingerki moka iilyo ya za megongalo kehe lyomOndonga ya kala mo, kakele kegongalo. IyokOmuntele, omutonateli gwoshitayi shoka Rev. Timoteus Shipanga okwe shi tumbula nepandulo enene mehokololo lyomumvo kutya:

Ondjokonona yoshilonga shetumo mokati kAayelee oyi na ekwatathano netsikilo lyomadhina gaatumwa taa longo natango mOndjokwe, pamwe nomusita gwiipangelo Festus Ashipala: Esiloshimpwiyu lyawo lyoshi-



Elli Lokka

Owambo tai ke

Osha siivifwa omafiku aa moradio yOwambo koshilyo oshikulunhu mEpangelo lOwambo kutya, omalongekido otaa ka hovela diva opo Ovawambo va ka pewe omhito yokuhoolola ovapangeli vOwambo.

Ohamba Filemon Elifas ou e li oshilyo oshikulunhu mongudu yovaleli vOwambo paife, okwa popya, omhumbwe ylipangelo liyadi moshwana eshi, ove i koneka, nokwa li ve ke i indila komunisteli wEpangelo la S. A. omushamane John Vorster, nde osha itavelwa.

Omhito tai yeululilwa oshiwana shOvawambo, ovalumenhu novakainhu ve na ondaka moshwana okuhoolola ovapangeli ovo va hala, osho shimwe shomoinima ikwao oyo ya indilwa omupangeli Vorster, nokwe i tavela ngaashi:

- Owambo i shiivike kukeshe tuu omunhu kutya oshitukulwa tashi lipangele
- Ongudu onhotiveta i wedelwe natango eenghono shi dulife paife
- Ongudu Omhitifiveta iha talike vali ongokomitie yongaho tai endifa eeveta ndelenee i ninge ongudu yeeministeli doo vene (kabinet)
- Ku dikwe ohofa yeemhangu yopombeda.
- oshu yo Epangelo lOwambo li pewe elapi lalo lEpangelo.

longa shoka olya longo mokati kuunyengwi wokumonena nokuyoololela omutumwa gumwe oshilonga shoka.

(Ngashingeyi Epangelongerki olya utha omutumwa nomuyakuli gwaayakuligongalo Rev. Toivo Pentikäinen a sile omapya getumo muuzilo wOndonga oshimpwiyu).

Kakele kAayelee 8 mboka ya shashwa nuumvo kOnankali noya undula omwaalu gwaakriste gu thike 72, omutonateli okwa tumbula wo Aayelee 21 ya shashwa kOnyulaye mumwe noyokOmuniyankwe.

Oshigongi shoka sha leshelwa ehokololo ndika, osha taelwa po kongundu yAakriste ya za kOnankali mboka ya holola eitaa-lyawo momaimbilo nomomahokololo, meliliko lyaalongi yawo meme Hileni lingula nameme Anna Max.

Osho sha li oshigongi shotangotango moshitayingerki shOndonga sha kala koshitaa-fula shOmuwa mUulalelo Uuyapuki pamwe naamwayina ooitaali ya za moshigwana shAayelee. Oya li ye vule yane moshituthi shoka.

Kalunga okwiiholola momikunda ndhiyaka dhomuuzilo wOndonga koshigwana she, shika kape na we ngoka te shi ludhikitha magongalo gomOndonga ngoka ga li po onzapo mOnguta eti-25.6.1972.

"Umbila oshikwiila shoye kombanda yomeya, nongula otashi ku galukile," osho omutonateli gwoshitayi Shipanga okwa kumagidha oshigongi netumbulo lya za moondunge dhaSalomo.

Ya yakula pahalo lyawo yene

Ngashi sha tumbulwa metetekelo kutya ondjokonona yoshionga shomokati kAayelee moshitayingerki shika, oshi li aluhe metsikilo lyomadhina gaantu oogumwe nenge opamagongalo.

Omadhina gaatumwa taa landula ihaga pumbu mo mehokololo lyomutonateli omu-

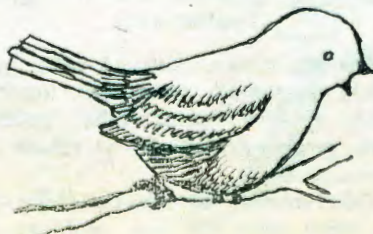
lihoololela ovaleli

Ashishe eshi opo shi wanifwe okwa pumbiwa tete elongelokumwe noshiwana ashishe shOvawambo, osho ohamba Filemon a fatululila oshoongalele oinima oyo tai ka ningwa mEpangelo lOwambo omudo tau ya.

Oshoongalele eshi osho shotete sha ningwa mOndonga pOluno notashi ka shikulwa kuikwao moilongo aische yomOwambo.

Omukulunhu munene wOwambo, okwa shiivifa yo moshoongalele eshi nhumbi oshiwana tashi pumbwa tete elishangifo opo ku shiivike ovo ve na omhito yokuhoolola ovapangeli.

Okomitiye yo omolwoshinima eshi otoi ka dikwa oyo tai ka kala ovanhu va dja moshwana, va dja mOngudu Oyandjiveta nomOngudu Omhitifiveta, osho ohamba ya tonga. Elalakano lokomitiye ei okukwafa Epangelo lOwambo momalongikido aeshe elunduluko lomEpangelo lOwambo.



mvo kehe notashi holola epandulo lye, oshoka iilonga yomomapyo getumo, ohaye yi longo pondje yiilonga yawo yesiku kehe. Else Witting, Kirsti Pakkala, Anneli Hirvonen, Helka Honkanen naMaija Mattila.

Mbaka ayehe ohaa longo moshitayingerki shika shOndonga. Oku na wo mboka haa longo miitayingerki yilwe noya yambula po oshilonga shEtumo mpaka omolwomatalelo-po gawo ngashi:

Omuhongi **Matti Seppälä** manga a kala nokuli mUuningininino nosho wo **Rev. Toivo Pentikäinen**. linkoti yawo otayi monika sigo onena momapyo ngeyaka getumo moshitayingerki shOndonga, osho omutonateli a hokolola.

Omatalelopo

Omayambeko giilonga yomoshilonga shoka opo shi ete iiyimati okwe shi tala kombinga onkwawo kutya, osha za wo momatalelopo gaayenda. Mboka e ya tumbula oyo omukuluntu gwEnongelo lyaayakuligongalo **Rev. Josia Mufeti**; aatumwa **Irja Soikkeli naAnja Anttonen**, mEngela.

Omusita gwoshilonga shetumo mongerki yetu **Paulus Andreas** naye wo okwa talelepo Aayelee mboka muuzilo wOndonga kOnakali lwaali. "Omatalelopo ngaka nosho wo omakwawo gaatumwa oga etele oshike-tha shetumo ekwatano oongalo dha adha sigo nokuli R63.54.

Yamwe ya dhimbwa iinakugwanithwa yawo

Okulonga oshilongatamo molupe lwiikwatha yi ili noyi ili ngaashi ando iiliwomwa niizalomwa, osho ando oshimpwiyu shegongalo kehe moshitayingerki, nando hamagongalo agehe taga tsakanitha oshinakugwanithwa sheithano lyako.

Omuhokololi Shipanga okwa simaneke omagongalo taga landula: **Omuntele**, **Oshigambo**, **Othitayi nEheke** nuumvo wo. "Ngaka ihaga dhimbwa iilonga yago," osho a ti.

Aakriste oogumwe noogumwe mpaka naampeyaka momagongalo moshitayingerki shika otatu ya adha wo omadhina gawo ga tumbulwa mehokololo lyomutonateli.

Aayilongi aakriste mOkahao R 14.00; aayunguli konima yaUis R1.85; elenga Filemon Shilongo R2.00; Ev. Justus Vatilifa, Grootfontein R3.00; Sofia Johannes, Eheke, R10.00 nomukuluntu-gongalo **Paulus Iyambo** ngoka a tumine Aayelee oolata dhiilya 30.

Ope na mboka ye shi okutumbulwa mushika nomushiyaka natango, ihe omolufupi wompito itatu vulu ngashingeyi okuya tumbula. Osho omuhokololi Shipanga a ti

Aatumwa ya ka fudha po

Aatumwa Aasoomi otaa thigi po Suidwes omasiku ngaka okanamundonda ya ka fudhe po koshilonga shawo oshidhigu shevangeli muAfrika.

Osheendo shookuku Helmi Haapanen sha tetekele nale. Okwa landula oomeme Lahja Lehtonen, Maija Liisa-Kaljunen omudhiginini gwiiniwe yEtumo, tate nameme Raimo Holopainen.

Konima okwa ka landula ishewe egumbo lyaKauko Häkkinen, omudhiginini gwiiniwe yiipangelo yEtumo mOwambo noKavango, osho wo meme Elli Lokka, omulongi gwosikola yokombanda kOkahao.

Okwiinekela Gwambo ayike, osho okwiikwata komayulu waa fudhe

Nangutu oku na eitaalo muukumwe wevi alihe

Oonkambadhala dhaJohannes Jefta Nangutuuala okuninga oshigongi shaakali yomevi alihe ndika sho dha palutha, omuhiyi gwoshigongi Nangutu okwe shi hokolola kiifo kutya, ye elalakano lye kalya li nando tali kondjitha uuwanawa waantu mevi ndika.

Komukwaniilwa omusimanekwa Filemon Elifas, ngoka kwa li a nyolela Nangutu ombilive yetindo lyokugongela oshigongi, okwa ti:

Elalakano lyoshigongi olya li wo ndyoka opo omaudhigu nomahindathano muNamibia ga popiwe go ga kondjithwe."

Ngele nani omoluumbanda wokugongela aantu naamboka ya za pondje yOwambo ngaashi omukwaniilwa e shi holola mombilive ye, omusamane Nangutu okwa ti kutya:

Okwiinekela Owambo ayike, oto kala wa fa omuntu a kwatwa komayulu itaa wapa okufudha. "Omwenyo gwetu ogu li muumbugantu waNamibia nongelete otatu kanitha ekwatathano nawo, otatu ike tseyene koshitayi," osho omusamane Nangutu a ti.

Oshigongi shomihoko adhihe muSuidwes osha li sha hiywa kuye nuumvo muMai ando osho shotango okuza uuna omuwiliki Nangutu a holola omadhiladhilo gongundu yuupolitika.

Manga oshigongi inaashi ninga ombilive yelondodho oya zi komukwaniilwa gwoshilongo shaNdonga kaa tsikile noshinima shoka.

"Owa dhini ndje noino tala ndje omukwaniilwa gwOndonga sho wa hiya oshigongi shaayehe moshilongo shandje manga inoo indila ndje epitikilo," osho ombilive ya ti. Omatompelo omakwawo oga li wo mombilive.

Komufala Ndjayi mOshakati, ngoka a yamukula ehiyo lyoshigongi shika, okwa tumbula mombilive ye ngeyi kutya, Epangelo lyaS.A. inali zimina nande lumwe paveta eindilo lyongundu nenge olyehangano opo li

Oshiwana kashii shi eshi tashi pewa kEpangelo

Finbo ohamba Filemon Elifas ta fatulula nokulesha osho sha teelelwa shi ka ningilwe Owambo odula tai ya 1973, kapwa li nande omufudo washa tau udika movapwilikini, opo vaha kanife po nande kamwe komwaa- yo tai hokololwa.

Ovalumenhu ve fike lwopefele limwe noixupe novakainhu vanini lela, okwa li va onkala pOmbelewa yoshilongo shaNdonga eti-3.7.1972 okupwilikina oshipopiwa shohamba yoshilongo omolwemanguluko loshiwana shOwambo.

Hauxuuninwa omapulo ovapwilikini okwa hovela okuloka kombada yomitwe dovapangeli ovatilyane novalaule fiyo va ka hondama mouwike okukonga omanyamukulo ovapuli.

Ohaku tiwa kutya, kape na omudali ta yandje osho tashi etele omona waye oshiponga. Ovawambo moshongalele eshi okwa li tave shi ulike kutya, ovaleli pamwe tava ka yandja natango osho tashi ka lya po ovana.

Eshi osha holoka momapulo avo.

Omanyemato Oshiwana

Oshiwana osha kala sha teelela nondjuulufi inene oiimati tai di ngeno meholokepo lelipangelo lOwambo okudja 1968 okukufa po omutengi mudjuu komapepe asho. Mee-nghundafana doukomisi hava tumwa moshiwana osha holoka sha yela nawa.

Moshongalele eshi okwa pulwa fiku eeveta domefimbo la pita tadi ka shiivifilwa

vule okulonga. Epangelo ohali tokola ashike mokugandja oveta yokwiindika ongundu yontumba nenge ehanganu lyongandi ngele nani otali yono uuwanawa woshilongo naakalimo yomusho.

OMAVIGUMBO OKUYONA OMITHIGULULWAKALO

Omusimanekwa Nangutuuala ina tempelwa natango kooveta dhomavigumbo kutya, odhi li po dhi gamene omithigululwakalo ngashi e shi tamanekelwa mokudhika ongundu yopolitika kutya, okuyona omithigululwakalo.

"Shimpa tuu edhiko lyongundu yopolitika okuyona omithigululwakalo, nena nokulangeka wo oongundu dhokutota ooveta momavigumbo, okuyona omithigululwakalo."

Mpaka okwa ulika komukwaniilwa Filemon sho a yile kOkapa nuumvo kee na oshilyo nando shimwe shomoshilongo she. "Omithigululwakalo dhetu ihadhi shi pitika nando," osho a ti.

Nangutu ita popile aakwaniilwa ya lange-kwe miilonga yuupolitika muuministeli. Ita popile wo aakwaniilwa ya kale taa pushu niilonga yoombelewa ya fa aathigoia.

Peha lyoshigongi shaNangutu, Aandonga ayehe oya li ya gongala pombala yomukwaniilwa, okukundatha ooveta dhuukongo nokwa tala osha ningwa nowino wokukelela oshigongi she.

"Otwe shi kala nombili, opo tu simanekwe omukwaniilwa gwetu," osho Johannes Nangutu a ti.

oshiwana unene oshikako shotete eshi sha pwa ko (eedula 5).

Peumbo inava longa sha, kOshakati oko tava uhala inaku dja eeveta, oimaliwa yetu moikefa ove i mana mo, onaini hano tave ke tu lombwela osho ya longa lo efimbo lavo ola pwa ko paife? osho umwe a pula nenyeme linene.

Komufala S. Lubbe, oye aeke omukwanepangelo a kula a li moshongalele eshi pamwe nomushamane Dreyer.



Toolitha ndje kwee

Onda kanitha oshako yi na eyemele lyekandiina, meni mu na ombiga yiikongo, oombulukweya mbali dhomavalola oonkulu, Ombimbeli ya nyolwa edhina Johannes Elago.

Oshako ndjika oya kana peheluko pOluno eti-28.6.1972. Alikana ngoka we yi mono, kwatha ndje u yi tume kungame. Otandi ke ku nyanyudha nawa.

Ohandelesi yandje: Johannes Elago, Oshikweyo, Eheke, Ondonga

Ehoololo okukufa po eshi wa hala

Oshiwana osha udanekelwa shi ka hoolole ovaleli vasho ava sha hala: Ei oyo naanaa onghedi yoiwana aishe mounyuni i na eli-neekelo movanhu vayo nova fimaneka omuru ausho.

Ehoololo okukufa shimwe pokati koinima ivali ile ihapu. Kombinga yovapangeli ovahoololwa ohava kala va shiivika kutya oolye' opo ovanhu va hoolole ou va hala. Keshe umwe e li mehoololo okwa li e na okushiivifila ovanhu osho te ke va ningila naasho te ke shi kondjifa mepangelo laye, fimbo ehoololo inali fika.

Kakele kaashi ashishe, ouhapu woshiwana osho tashi kongo omupangeli owa li u na okushiivika. Eedalele doshiwana ashishe osho naaveshe va konga oufemba woudalele woshiwana osho nande va dalelwa kumwe ku lili, otava kala ve na omhito yokuhoolola omupangeli ou va hala shimha tuu va hanga eedula da ufwa.

Omupangeli ou a li mehoololo nde eendaka odo da popila epangelo laye odi du-like kudamukwao, oye ta kala omuwiliki wongudu omhilamena ko kEpangelo, osheshi naye oku novanhu pondje yondjuwo yokuyandja eeveta (Parlement).

Kape na omalimbililo ovapuli aveshe moshongalele shinya okwa li tava kendabala okutuula po eluviluvi eli la uvika oshipala shomufuko ta fatululwa kutya oye nee muwa ta ka wapalela oshiwana.

Oshongalele osha pula Ovakwanghala nOvadimba ngeenge navo otava ka kala mehoololo. Osha pula ngeenge Epangelo otali ka kala li na eengudu dovapolitika (partye) ile ngeenge otali ka handukila natingo ovo tava ka yandja oushima kepangelo.

Ngeenge Epangelo kali na oinima ya tumbulwa pombada (imwe inai shangwa apa) ohatu li limbililwa natango, osheshi osho twa li tva udanekelwa nomeyandjo lelipangelo lotete, osho oshongalele sha ti.

ONDJATHA YOPAUSITA YA KANA

Omusitagongalo Junias Vaino Kaapanda, Tshandi, okwa kanitha ondjatha ye yopausita manga ya adhika taa zi kosikola ofupi yuuteologi kOtjimbingwe pehulilo lyomwedhi Juni.

Omuzalo guusita tate Kaapanda ota ti kutya, ogwa dhimbiwa moshikoto sheshina sho ya heluka mUusakosa, ihe ina tseye oshikoto shoka ngele osha yi kOvenduka nenge osha yi kOshiwakopo. Omusita Kaapanda ota indile shi ye okawi nokawi komahala agehe ngoka ngele taku uvika kwa toolwa okofa yoonguwo mu na omuzalo guusita.

Nangutu ita hogololelwa oBantustana

Jairus Muleka, Onayena okwa nyola;

Otandi pula mpaka aahiywa amuhe yoshigongi shomusamane Johannes Nangutuuala kutya, omu uvite ngiini ano sho oshigongi shoka sha keelelwa paveta yOwambo aniwa yontumba noyongandi. (Oshigongi osha li shi na okukala ko 27.6.1972).

Aantu yamwe otaa ti anuwa omusamane Nangutu okwa li a hala a ka tseyithile aantu moshigongi she moka kutya, ye okwa hala a ka hogololwe koshigwana mEpangelo lyOwambo ngele otashi vulika.

Aniwa ehogololo ndyoka otali ka kala ko 1973. Aantu yamwe oya ti ishewe kutya, nena omusamane Nangutuuala ngele okwa ningi nee omupangeli gwOwambo, mbela ota ka kala we tuu e na ompito yasha okugamena oshigwana she okuhololela uuyuni upika woshigwana she?

Omukriste molwoodi noilwifo yaye

Kaleni oupafi neendunge, osheshi omutondi weni satana ote mu dingilile ngonghoshi tai kumbu tai kongo ou tai mono i mu pone po. Mu kondjifeni mwa kola meitavelo 1Petr. 5:8-9.

Eenghono domutondi

Omutondi oye ta popiwa ngaha, Ngenge ta Iwi fwa eongamukonda, kali na eshi tali dulu, neonga nomukove ile oshivela, kashi dulu sha. Oha tale oshivela ngaashi oshihati, noshikushu ngombolo.

Oshikuti itashi mu ifa onhapo, omamanya haa umbwa noshikupulifo, otae mu shitukile olungona Eedibo ohadi walwa kuye ombudilo. Okepopyo leonga ota yolo. Job. 41:17-20.

Omunhu wohonde nombelela ota dulu shike apa?

Omwene ota ti: Muhe na nge, itamu dulu sha. Joh. 15:5. Petrus nande a li ependa, a tilifwa kokakadona kehe na po sha. Heman naHiskia nande va li eefule, ova dengwa kuye. Osha hafifa David mefilu lomudile wefyo okukala pamwe nOmwene Ps. 23.

Moses a li a hala okufila ponhele apa a li ofika komesho yokukatuka onghatu imwe ehe na Kalunga kaye 2Mos. 33:15. Heeno shili, omunhu ngeno molwoodi keshe a kale e na oka-

Tate Nangutu otwe mu pandula unene sho a toto po okangundu okape mOwambo.

a) Okwa yi tango pamwe naalongi komukwaniilwa omunene Ushona Shiimi, opo ye ke mu hololele oshigwana nkene shu uvite kombinga yetokolo lyohofa yuuyuni.

b) Okwa hogololwa omunashipundi mokomitiye yondhalate

c) Okwa koleke ombilive ye eguluka yongerki yaVelkswa.

d) Okwa li omupopi omunene koshipala sha Dr. Waldheim omolwaSuidwes-Afrika.

Pulakena, omusimanekwa Johannes Jefta Nangutuuala, tse oshigwana shoye muSuidwes, otatu ku landula owala ngele to kala pamwe natse momaudhigu getu ngashi naanaa wa kala natse tango miinima ya tumbulwa pombanda.

Ngele oshili, kutya owa hala tu ku hogololele uuwiliki woBantustana (eipangelo lyevigumbo) mOwambo' nena tse itatu shi ningi, oshoka ngele twe shi ningi, nena oto ke tu thindila ngea natango muudhigu wo wenewene ngashika omudiakoni Peter Kalangula ngoka ta ti inatu pya natango.

(Dha fupipikwa)

kambe kaJob. Nokukale noukeka nouladi oku ka londa, osheshi, ofingo yako oya djalekwa nomulenge hau nyemauka.

Yo ohai nhuka ngaashi (onghambe) oshipaxu, nelipembo layo oli tilifa. Otai pale elundu nokunyakukilwa meenghono dayo. Otai i i ka shakeneke eengudu da homatekwa. Otai yolo eflo, yo kai na oubada.

Itai kandukile eongamukonda. Ohai pona edu nehandu netikauko nopokupopya kwenghu ma, kai shii ku mwenekwa. Elidengo otai li fimbula kokule, nengungumo leendaka dovawiliki neingido loita. Joh. 39:22-28.

Oilwifo yomukriste

Mwaashishe kwateni oshikandekifo sheitavelo mu dule okulidimifa oikuti aische yomutondi ya xwama omundilo. Efs. 6:1-18. Efyo efindano loye oli li peni? Oshovafi ongoni yoye oi li peni?

"Ndele Kalunga oye na pandulwe ou te tu pe efindano omolwOmwene wetu Jesus Kristus. Omwene ngeenge ita nangele oshilongo, ovanangeli vasho otava nangele oshimha."

Immanuel H. Hamunyela

Viktorine Kayele, a hulitha oondjenda

Meme Viktorine Shatimpile, Oshigambo gwomimvo tadhi tengenekwa po-40, mUushimba okwa tembukilemo 1943 sho a hokanwa. Okwa li oshikaha oshile okuyakula egongalo lyaShaanda (Grootfontein).

Oye okwa li omutameki gwoondjimbo momalongelokalunga nomiigongi, omuwiliki gwongundumbimbeli yaakulukadhi, omudiakoni, oshilonga shoka e shi longo neitulomo enene.

Oshigongi ngele osha hiywa, meme Viktorine ina imbwa kiimaliwa yomalweendo, okwa kutha shono sha li megumbo lyawo nokwa yi ko. Okwa kondjo nuudhiginini oshiketha shaakulukadhi megongalo ye shi monene iimaliwa nokwe shi thigi shu udha. Osho haa longitha nge taa yi kiigongi, nenge taa kwatha oohepele.

Okwa thigile omushungu aanona 13 okuputudha kumwe noyomukulukadhi ngoka a tetekele po. Aantu ye vule 500 oya thindikile meme Viktorine megumbo lyahunguna lyevululuko.

Edhiko lyomagongalo omape lya ningi eipulo mOndonga

Osha konekwa ngashingeyi mOndonga kutya, okudhika omagongalo omape oshinima tashi pumbwa elandulathano nomafaneko ga kola. Osha zi moshigongi shoshitayingerki shoka sha li sha gongala mOnguta 23-25.6. 1972.

Moonkundathana oonde moshinima shomagongalo omape efaneko olya etwa nolya kolekwa, opo okangundu kokukonakona oshinima shika ka hogololwe ko ka ye miilonga.

Okomisi yaantu yaheyali moka mu na omutonateli gwoshitayingerki shOndonga, oya hogololwa koshigongi. Elalakano enene lyokuninga omafaneko okumona nuupu aakwanegongalo ye na ompumbwe ye endeleda okumenenwa omayakulo agehe gopambepo.

Shika otashi ti wo kutya, eyakulo lyaakriste netaandelitho lyevangeli komahala ge na uudhigu okwaadhika osha talwa nomeho omanene ngashingeyi moongamba dhoshitayi shika shi vule shito.

Okomisi otayi ka faneka iilonga yoomvula ntano dhi li komeho. Eipulo moshinima shika olya zi metulokumwe lyomiyalu dhii-taambwa nodhaakwanegongalo ngaashi sha thanekwa komusamane Olle Eriksson.

Ihe omaipulo wo gaasita aagundjuka nke ne taa ka monika natango moshitayingerki shika, kaga li ga dhimbiwa po moshigongi shoka.



Uyuelele woye nau minikile kombanda yetu

OMUKWETU

Oshifo shOngerki onkwaevangeli paLuther yomOwambokavango
Die Nuusblad van die Evangeliese Lutherse Owambokavangokerk
Ohashi nyanyangidhwa mOniipa,
Omukuluntu gwoshifo/Hoofredakteur omumbisofi Dr. Leonard Auala,
Amushanga/redakteur Rev. Sebulon Ekanjjo
Ondando yoshifo komumvo muSuidwes-Afrika R1.00, kombanda yomafuta R2.00
Oondando nomambesitelo naga tumwe kOmu-kwetu, Oniipa, P/B 2013, Ondangwa, S.W.A.

Omatseyitho gomuntu mwene pashinyolwa shuule
woondeimi 1 otashi futwa R1.00
oondeimi 2 otashi futwa R1.90
oondeimi 3 otashi futwa R2.70
oondeimi 4 otashi futwa R3.40
oondeimi 5 otashi futwa R5.00
Oto vulu okutuma wo efano lyaashono wa hala shi tseyithwe

Owambokavango Church Press
P/B 2013 Ondangwa, S. W.A.



Viktorine nomusamane gwe