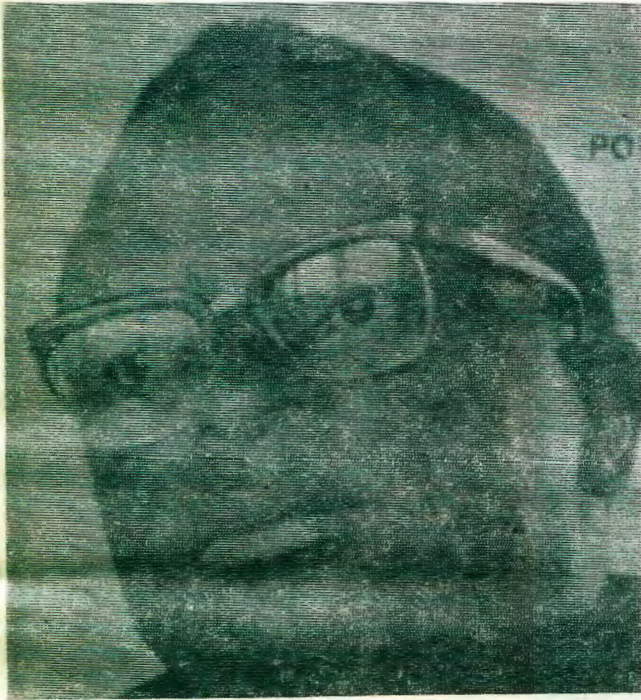


# OMUKWETU

Registered at the General Post Office as a Newspaper

## ESHI ELIMBA (MUSEUM)

"O, onda mona oupyakadi muhapu okwoongela omambo neembapila di fike opo, nde paife aishe otai monika i li meshikulafano liwa," osho meme Lahja Lehtonen, omutumwa nomulongifikola wefimbo lile mOwambo, a tumbula.



Omumbisofi Abel Muzorewa (47) a kala omulongisikola nomuyevangeliste. Okwa piti onkatu ya B.A. muAmerika noshwo onkatu ya landula ko. Okwa li wo omuwiliki na amushanga gwo-shilonga shomokati kaagundjuka muRhodesia. Oye omuluudhe gwotango muRhodesia a yapulilwa uumbisofi 1968. MuDezember gwa zi ko okwa hogololwa omunashipundi gwongundu yaAfrican National Council (ANC) ya dhikwa yi kondjithe efanekompango lya tungwa kulngilanda nalan Smith. Okwa yile wo kuAmerika omolwoshinima shoka.

Omutumwa Lahja, (Kanyeku) ngaashi ovana-fikola ve mu shile medina eli, okwa shuna paife kOsoomi, nde okwa fiya a longi oshilonga sha fimana paife apa mOniipa. Omudo wonendo meme Lahja ine u longi nande mofikola yavo mOshigambo nde okwa kala e lipyakidila nokwoongela omambo makulu, eenhokolwa noshwo yo oipumbiwa keshe ikulu yomeumbo lOshiwambo.

Etungo linene ola tungwa owinā pOniipa li ninge elimba lokupungula oinima ikulu yOshiwambo. Elalakano okupungula oinima oyo i li pokukanifwa keehenokomesho eshi tai pinginwa koinima ipe.

Okwa pumbiwa ku monike etemo loshiwambo, etiti, okanghinda komaadi, olukwe, edilo, eendjeva, oondjuhi dOshindonga, oipando, oonyatela wOshiuninginino, eengodo eemba noshwo tuu.

Kwa halika yo ou e na oshini shikulu shOshiwambo, ongalo nomalilo. Aishe ei, itai pumbiwa i kale ipe lela, nde shimha tuu inai nyonauka filufilu. Melimba eli omu na yo oinima imwe oyo ya longifwa komutumwa Nakambale ile kovana vaye. Omu ehistoli otali diininwa lela nawa, itapa kana sha.

Konyala oikulunima 114 oya fika nale melimba (museum) eli. Melimba likwao omu  
Tala kep. 4

## Ewi lyongerki mu Rhodesia

Aawilikingerki muRhodesia oya holola e-tegamenno lyawo ngashingeyi kutya, ontamanana pokati kEpangelo lyaIngilanda nokEpangelo inaali ziminwa lyaSmith muRhodesia, otadhi ka manwa po mbala komukalo omwaanawa.

Shika osha hololwa konima yekonakono lyaPearce ndyoka lya li tali konakona omadhiladhilo gaakali muRhodesia kutya, oyu uvitile ngiini omafanekompango ngoka ga li ga etwa po komapangelo ngoka gaali. Eya-mukulo olye ya kutya, kage shi kulongithwa.

"Shoka osho sha li eenditho lyaKalunga okulongitha ekonakono lyaPearce opo Aarhodesia ayehe kumwe ya konge shimwe eya-mukulo tali kwatha notali mana po uudhigu mbuka," osho sha tiwa komumbisofi Abel Muzorewa ngoka a ningi omunashipundi shongundu ompe yopolotika (ANC) muRhodesia.

Aawilikingerki yoongerki yaAnglikani, yaMetodisti noyaCongregation, oya kumagidha aavalelwamo yi ikwate nawa moohapu dhawo nomiilonga, omolwefaneko lyomapangelo ngoka sho lye ekelwahi. (EPS)



## EMANGULUKO NOKWIIPANGELA KWETU MILONGA

Omuntu kehe moshilonga she ota pumbwa ohokwe yokomeho yoshilonga she Mpoka oshilonga tashi longwa nohokwe, ohashi imonikila. Eitulomo nomadhiladhilo getu agehe, ohashi eta wo ehumokomeho lyoshilonga tuu shoka. Ope na ngaa iilonga mbyoka yi lile po omulwomahupilo ashike nenge molwokwii-monena omboloto. Moka omuntu ota vulu okulonga ngaa nando ohokwe nohole yaa po.

Ihe oshilonga sheuvitho nehungomwenyo ohashi yonwa pamukalo nguka. Sho shene osho oshilonga shootina nomaudhigu gaa shi kupatanwa. Ihe aatetekeli, Omukulili mwene, aapofeti naayapostoli, gumwe gwomuyo Paulus; oya longithwa kethiminiko lyohole. Kombanda yaayihe oshilonga shevangeli oshi na eadhimo lyaaluhe. Nomunyoli gumwe okwe shi popi ngeyi.

Oshilonga sheuvitho oshokuyalulilwa mongundu yetumbalo lela kombanda yevi. Nangoka kwa ithanenwa euvitho lyevangeli oku li mumboka ya tumbala mokati koshigwana.

Nomolwaashika omuuvithi ota pumbwa okwiikwata nawa nokulongitha emanguluko, emangulu mumwe neipangelo, omolwe mwene nomolwayalwe. Oshoka uuna eipangelo tali kana, nena osho omuthika gwe moshigwana otagu kundju. Okudhiginina iilongayakulo, oonkondo ndhoka dheipangelo odhi na okulongithwa. Oshoka iithiminiki oyindji oyi na okuyuga omuyakuli okathimbo kehe nomadhiladhilo kehe goshilongayakulo. Mpoka eipangelo lya kana opwa uuvika nokuli omahatuko ga tya ngaaka miipathi yaantu:

"Uulonga wa tya ngeyi otau hepitha ashike omuntu. Ngame otandi vulu okwiimonena iilonga yilwe yi vule mbika yi na ondjambi. Ngame ondi na oonzapo dhandje oombwana-wa tadhi vulu okupopila ndje, ndi mone iilonga iivanawa!,"

Shika osho eyagulo lyoshilonga sho shene, tali holola uunyonyodholi waashoka omuntu e shi pewa in eshi taamba nomwenyo aguhe. Ihe "Nekwa lya tsima oye ngaa nyoko. Ooyi-na yaantu kaa lililwa!

"Aamwameme, omwi ithanenwa uualwa" (Gal.5:13).

Iilongayakulo inayi lala moshinyanga nomomikunda

**4.Emanguluko lyetu neipangelo methimbo lyehumokomeho nomalunduluko.** Mokati ketu oshitya "ehukomeho" otashi uuvika esiku nesiku methimbo ndika. Nokashi li ashike omudhengo gwelaka nomulombo, ihe oshinima tashi ningwa. Mokatiki kepipi egundjuka lyaalongi, aapangi nolyaaniilonga yalwe, otamu kondjelwa okuthika komuthika gwehimbo ndika. Osho wo shi li mepipi egundjuka lyaauvithi.

Ihe omuuvithi kehe ogwaantu yomapipe agehe. Nashika otashi pula omuuvithi kehe ompito yokweenda pamwe nethimbo nenge naantu ayehe, mboka e nokuuvithila mokuhunga oomwenyo dhawo.

Osha tseyika nawa kutya omuntu kehe oku na okwiikumitha komeho, unene miinima yoshilonga she. Oshoka moshilonga kehe omu na wo omayinyengo hage etwa kethimbo. Ope na omikalo dheilongo moshinima nope nomukalo gwokulesha nokukonakona iinima. Nogwo nguka hagu longithwa komuntu kehe pwa nuudhigu.

Omukalo nguka otagu longithwa mokulesha omambo nenge iifo wo. Moku shi ninga omuntu ta likola omauelele mushika nomushiyaka. Mpaka omuntu oku uvite ko wo nomadhiladhilo gomethimbo. Ihe olwindji

ethimbo kali po. Nomadhiladhilo gegwano nuukunyunu ohaga pangele.

Mpaka apeke eipangelo lyetu lyopavangeli tali longithwa, opo wo mpoka omuntu e shi okwiilandela ethimbo nolyokulesha nokukonakona.

**5. Emanguluko lyetu muu- Nomekwatatha kumwe woshigwana.** no nuulikumwe woshigwana, omuyakuli oku na emanguluko lye lyopavangeli. Ihe ompaka ta pumbwa oku li longitha neipangelo lya gwana. Monkalomwenyo yethimbo ndika omu nomalunduluko ogendji. Nena ope na onkalomwenyo patatu.

- a) Yopashiwambo momagumbo nomuwi-ke,
- b) yopalukanda
- c) yopakamba nopaudingosho.

Monkalomwenyo ndjika omuyakuli oku na okukala mekwatathano nadho. Ihe yopamagumbo oyomekota lyOmuwambo noya igililwa. Ihe onkalomwenyo yopalukanda oyo oshinima oshipe momadhiladhilo gaantu, nomuhungimwenyo ta pumbwa oonkatu oompe muyo. Manga mundjoka yopakamba nuudingosho, omuyakuli ta pumbililwa oshindji. Nopafupi okudhimbulukwa aluhe elondodho lyOmukulili mwene;

"Kaleni ano mwa kotoka ngomayoka, nongoonguti mwaa na oshipo" Mat.10:16.

Nonatango tuu, otatu dhimbuluthwa okusimaneka emanguluko lyetu lyomuKristus nokulongitha oonkondo dheipangelo nomolwetu yene. Na ishewe otatu dhimbuluthwa okusimaneka eithano lyetu neadhimo lyoshilonga shetu. Nokudhimbuluthwa wo emanguluko lyetu mekwatathano naayehe, lya etele yalwe oshiponga nenge tse yene.

T. Shipanga

### D.D.T. na longithwe ngiini?

Pomasiku ngaka oku na oonkundathana miilongo niilongo oomolwetaandelo lyuuzigo muunshitwe. Ngashingeyi pwa fa kape na we naanaa oshikololo muuyuni inaashi zigopalekwa. linamwenyo yomombepo noyomomeya oyindji oya adhika ya sa nomomalutu gayo omwa dhimbululwa uuzigo mboka hau longithwa kaantu pamukalo gwontumba nenge gwongandi.

Uunongononi owa eta po omikalo dhi shi okupandulwa mokukelela uupuka wi ili nowi ili hau taandelitha omavu omawinayi. Uuzigo umwe u shi okutumbulwa mpaka oD.D.T. ndjoka ya dhimbululwa kutya, oshikeleli oshivanawa shuupuka hau taandelitha malaria.

Omuti nguka ogwa longithwa wo okukelela uupuka hau yono iimeno nenge sha shilwe. Ngashingeyi pwa piti owala oomvula omilongo ndatu niihupe uuzigo waD.D.T. sho wa dhimbululwa kutya, otau dhipaga wo uupuka nowa longithwa nehawo enene.

Uukongo woomwe owa tseyika wo ngashingeyi nomOwambo, osipana yaakondjithi yoomwe sho ya talele po omikunda nomagumbo ogendji gaa-muka. Enyanyu lyoyendji sho ya li yu uvite otaa kuthwa onkana yoomwe, pombunda olya hulile moluhodhi konima sho ya ka dhimbulula kutya, nani haoomwe adhike tadhi si, ihe oondjuhwa, uumbishi wo nenge oombwa nokuli.

Uuzigo waD.D.T. ngele owa dhimbululwa moohi dhomomafuta nenge moondhila nena momalutu gAawambo oyendji wo kape na etompelo lyasha oku shi limbililwa, omolwombelela yoondjuhwa dha lya uupuka wa dhipagithwa uuzigo mboka nenge ombelela yiimuna ya lya omwiidhi gwa pombelelwa.

Okwa tengenekwa kutya, otashi pula oomvula 20-30 opo uuzigo waD.D.T. u hahuke. Shika

Tala kolulyo

### D.D.T.

dha za kolomoho

osho eipulo enene momagumbo ogendji mOwambo sho ga toka uusila wuuzigo mbuka, nkene taa iigamene kuwo.

Amerika okwa thiki nokuli ponkatu yokuninga oveta ya nyolwa mokukelela elongitho lyuuzigo mbuka, noku na wo iilongo yilwe tayi shi dhiladhila.

Tse otu na enyanyu enene lyoku hupithwa kuuvu woomwe,ndhooka hadhi pombelwa mokwenye, ihe kombinga yepungulo lyuuzigo momalutu getu nomomalutu goluvalo lwetu talu ke ya, inashi mana po nani omaipulo.

Omukalo gwokulongitha D. D.T. ogu shi okutalwa nkene tagu ende wo nomokati ketu.

# Konghola yo pefimbo la wapala

Mat.7:7,8

## Okaudifo momalinyolifo kuAbsalomo Hasheela

Okukonghola otashi ti okweehela u pewe meumbo. Nande sha fa sha li pamwe inashi yela nawa kufye eshi nale katwa li tu na omivelo hadi kongholwa, paife oshe tu yeleda nawa kutya, okukonghola otashi ti shike.

Ope na oinima imwe omukongholi e na oku i dimbulukwa mokukonghola kwaye;

1) Okukonghola koshivelo sha yuka; omukongholi oku na okukala e shi shii omuvelo oo ta konghola oo tuu tau mu twala opo a hala. Omunhu ngeenge okwa hala mongerki itashi dulika a ka konghole komuvelo woshipangelo. Ihe ngeenge okwa hala moshipangelo, itashi dulika a ka konghole komuvelo wongerki.

2) Okukonghola pefimbo la wapala; itashi kwafa sha ngeenge omukongholi ta konghola pefimbo olo mwene weumbo ehe mo, ile a kofa. Na kale hano e shi shii efimbo olo la wapala okukonghola, eshi mwene weumbo ta monika.

3) Okupitila mo ngeenge a yeululwa; Oshi na elao lashike mbela ngeenge naku-konghola ta fiye po omuvelo we mu yeululwa. Pamwe eshi a konghola efimbo lile, ina mona enyamukulo. Omuvelo nge tau yeululwa ote liteeka ashike nokuwinyuka. Ahowe, na pitile mo ngaho moshivelo she mu yeululwa.

4) Okukonghola noudiinini; Eshi osha hala okutya, omunhu na kale e na omukumo neteelelo la pama mokukonghola kwaye. A itavela oye ota ka yeululwa. Omukongholi ngeenge ta konghola nounye, pamwe lumwe ashike nokuli, mwene weumbo otashi dulika ite mu udu ile ota teelee a konghole luvali, edidiliko kutya okwa pumbwa mo tuu shili.

Ovamwatate ovaholike, otwa ongaleni apa nena hatu konghola koshivelo sheumbo laKalunga. Onde lineekela keshe umwe wetu e li apa, osho she mu eta po. Kape na ou e uya kokatalekonawa, ile pamwe eshi e na efimbo lihapu unene, ile a findikila ashike mukwao.

Onye omwa ninga nawa eshi mwe uya okukonghola komuvelo ou waKristus. Omwa shiiva okomuvelo ulipi tamu mono ekwafo. Omwa ninga nawa eshi mwe uya kongerki tamu kongo epitikilo okuya koshitaafula shiyapuki shohamba.

Omwa ninga nawa eshi mwa konghola komuvelo wa yuka ngeenge mwa hala shili okulya pamwe novaitaveli vakweni aveshe mounyuni aushe.

Olyelye mokati ketu ava tu li apa ina djuulukwa epitikilo okulya koshitaafula shOmwe-ne? Olyelye e uya ashike okuningifa okadidiliko membo leongalo pedina laye? Ihe olyelye hano e uya ashike opo a monike komufita a konekwe kutya oye omudiinini meongalo? Ope na tuu? Ofye atushe ohatu kongo edimepo lomatimba. Ofye atushe ohatu kongo epameko meitavelo. Ofye atushe ohatu kongo edimbulukifo lefyo lOmu-mukili molwetu. Ofye atushe ohatu kongo ehanganano naKristus napamwe novaitaveli vakwetu aveshe meulu nokombada yedu.

Ofye atushe ohatu kongo etuwomukumo meteelelo lOmweno waalushe konakwiiwa.

Ndishii otwe uya yo okuyandja onhu wetu aushe ongxwikilo koshipala shaKalunga? Eemwenyo detu da wana yo okukala di ya-di ehambelero okutanga Kalunga omolwou-wanghenda e u tu ningila muJesus Kristus.

Ngeenge otwe ya okwiindila, ote tu pe. Ngeenge ohatu kongeni, ote tu monifa. Nde-le ngeenge ohatu kongholeni komuvelo waye noudiinini, pefimbo la wapala ngaashi nena ote tu yeulula.

Tu pitileni mo hano kefilonghenda tu pe-we omaanonghenda aye.

Mefano pokati amushanga omukuluntu gwoshilonga shetoloko lyOmbimbeli muSoomi omusamane E. Rintala otaa

kundathana nomutoloki gwOmbimbeli yOshindonga Rev. Eino Amaambo kolumoho. Ehanganano lyenyanyangidho lyOmbimbeli muSoomi olya kwatha iimaliwa oyindji miilonga yenyanyangidho lyOshindonga.

## Ombimbeli melaka lyetu

Oshitya "elundululo" lyOmbimbeli inashi yela, oshoka shono tashi lundululwa, ngele osha li oshitokele, otashi ningwa oshiluudhe (Eino Amambo). Yamwe ohaa longitha oshitya, "etoloko" lyOmbimbeli.



Nale sho pwa kala eitaalo lya fa lya nika nokuli oshidhila kutya, oohapu dhaKalunga itadhi vulu okulundululwa nokutulwa momalaka omakwawo, shika osha ekelwahi ngashingeyi kaanongo yomalaka gOmbimbeli. Oya zimine kutya;

Kalunga ota popitha omuntu kehe melaka lye nopethimbo lye. Kalunga ita popitha kehe gumwe melaka lyOshiheberi moka Ombimbeli yotango ya li ya nyolwa.

Omahanganano gokunyanyangidhitha Ombimbeli ngashingeyi otaga kondjo nokulalakanaga mone oohapu dhaKalunga dha tolakwa nawa melaka lyomuntu kehe gwopethimbo ndika. Etestamendi Epe ndyoka lya holoka melaka lyOshiingilisa "Good News for modern man" olo lya talika tsuu, komalundululo ogendji gopashinanena.

Ngele osha ende nawa, konima yomimvo 10 nenge dhi vule po, ngiika natse wo otatu ka kala tu na Ombimbeli ya fa ndjoka melaka lyOshindonga. Omavangeli gatatu gopetameko oge li nale pokupwa.

Omusitagongalo gwetoloko lyOmbimbeli ndjika, Eino Aamambo, ota ti kutya, yo itaa lalakanene ya kanithe omadhiladhilo gopetameko gelaka lyOmbimbeli, ihe yo otaye ga yelithile ashike nawa aaleshi yonena niitya yi shiwiwe nawa. Mpaka otapa landula oshiholelwa shimwe:

### Etoloko ekulu: (Mat,9:10-13)

Ov. 10 Nokwa ningwa manga ta li omegumbo lye, tala, aateloni oyendji naalunde ye ya mo, e taa li pamwe naJesus naalongwa ye. (11) Naafarisayi sho ye shi mono oya ti kaalongwa ye: "Omuhongi gweni oshike ta lile pamwe naateloni naalunde?" (12) Ihe Jesus sho kwe dhi uvu okwa ti:

"Omboka ya kola oyo ka na nomwaaludhi, aavu tuu ayeke. (13) Indeni ihe mu ki ilonge shino oshike: Esilohenda nda hala haondjambo: Oshoka inandi ya okwiithana ayuki, aawe, aalunde tuu."

### Etoloko epe:

10 Jesus okwa yi koshililo maandja Mateus. Aafendelithi oyendji naalunde oya kuu-tumba poshililo pamwe naJesus naalongwa ye. (11) Aafarisayi sho ye shi mono, oya ti kaalongwa ye: Omulongi gweni omolwashike ta lile pamwe naafendelithi naalunde? (12) Jesus sho e shi uvu okwa ti: Aandjolowele itaa pumbwa omwaaludhi, ihe aavu tuu ayeke. (13) Indeni ihe mu ka konakone enyolo ndika, shoka tali ti: Okusila ohe-nda okuvuliile ndje okugandja omayambo. Oshoka inandi ya okwiithana mboka yi ilwete aayuki, ihe aalunde tuu.

## Eimbito lyaaleli yoludhi kehe

1. Omukulili ota popi  
Kune mboka aakwahopi:  
Mu ka lele ne mu longe,  
Aantu yeni yo yaa tonge.  
Lelo lyeni omagano,  
Ngash' uulenga weni mpano,  
Pwaa noonkondo dhomatati,  
Mwene gweni osho ta ti.
2. "Oshigwana tashi keme.  
Mutenge gwasho sho gwa leme,  
Okaaleli tashi tala,  
Moluhepo sho sha kala.  
One ihe sho mwa geza,  
Nomadhengo sho tage ya,  
Oshigwana tashi lili,  
Lelo lyeni lya na mbili.
3. Ndjahi yeni ya luluma  
Ngash' ondu tu ya tutuma.  
Silohenda mwe li dhimbwa,  
Mwenyo dheni sho dha limbwa,  
Ngame nguka gwopombanda,  
Ihe pevi nda li ontanda,  
Ndi hupithe oshigwana  
Shoka sha li tashi kana.
4. Shiholelwa nde shi mu pe  
Mokulonga nku okupe  
Mu landul' oonkatu dhandje  
Ngashi nda ti mEmbo lyandje  
Nena elelo ndi lyeni  
Tali ning' elago lyeni,  
Sigo tuu ne tamu piti,  
Nomegulu tamu hiti."

(Ewi: Mwenyo ngoy' ilongekidha Schmucke  
dich, O liebe Seele  
Lya totwa 1972 ku J.J. Nangutuuala av. 1932)



Omutumwa Lahja Lehtonen ngoka a  
longo mosikala yokombanda mOshiga-  
mbo okuza 1952, oha li nawa Oshii-  
ngilisa.

## KEELELA OSHIMELA SHOWALA SHAANONA

Aanona aashona otaa kwatwa olwindjilwi-  
ndji koshimela. Otaa pwasha notaa kungu.  
Otaa vulu okupupya wo. Aanona mba ya  
toya nenge inaaya pewa omahini gayina  
otaa hepekwa unene koshimela. Oyo kaye  
na iikondjithi yuuvu. No inaa kola nawa. O-  
shimela tashi vulu oku ya etela eso ngele  
itaa pangwa mbala.

Tu nokudhimbulukwa kutya oombuto ota-  
dhi eta uuvu (infesi) mela nomomandjandja.  
Okanona taka mono oombuto mokana no-  
taka nina oombuto. Oombuto ndhoka ita-  
dhi eta oshimela kaakuluntu otadhi vulu o-  
kweeta oshimela kaanona. Nuunene oombu-  
to ndhoka tadhi etele aakuluntu oshimela,  
otadhi eta oshimela oshidhigu kaanona.

OSHMELA OSHO UUVU U NA OMU-  
KWAYU.

Oshimela tashi tameke olwindji ombadhi-  
lila. Onyata ya yula noonkondo ya ziza ne-  
nge ya fa omeya noya nika nayi. Okanona  
taka yi kondje olwindji. Taka vulu okuku-  
nga nenge inaka hala iikulya. Okanona ita-  
ka kotha nawa. Esiku limwe taka pupyala  
ka fa ka vulwa.

Oshimela oshidhigu nokukunga taku eta  
ishewe **iindhindhiliki ikwawo**: Okanona  
taka tameke okukukuta, oombuto tadhi e-  
ta uuzigo molutu nokanona take ehama  
noonkondo. Uupyu tau vulu okukuluka no-  
kanona taka kambuka.

**Omolvashoka kambadhala okukee-  
lela oshimela.**

- a) **YAMUTHA OKANONA KO-  
NTULO OMYULA YIMWE NE-  
NGE SHI VULE OMYULA.**
- b) **FULUKITHA OMEYA AGEHE,  
GOKUNWA.**
- c) **YOGA IKAHA NAWA MANGA  
INO TAMEKA OKUPALUTHA  
OKANONA.**
- d) **FULUKITHA EKENDE NEGU-  
NDJI NGELE TALI LONGI-  
THWA.**
- e) **DHIGININA UUYOGOKI APE-  
HE.**

Ngele okanona koye taka kwatwa koshi-  
mela, ke eta KOSHIPANGELO MANGA I-  
NAKA KWATWA NOONKONDO, oyo  
ka mone ekwatho.

**INO MU PANGA NIIGWANGA.  
INO MU HUPILA NANDE.  
MU PA OMEYA GA FULUKA GA  
POLA.**

### Etalelopo lyomuseum

Omathambo gokutalela po ongulu yiini-  
ma iikulu pOniipa oge li ngeyi: Etiya-  
li okuza potundi 3 komatango sigo 5.  
Etitano; otundi 9 yongula sigo 12 po-  
mutenya, nokuza ponti-3 komatango si-  
go onti-5.

Osoondaha wo komatango otundi 3  
sigo 5. Epangelongerki olya langeke o-  
musita Eino Amaambo mewiliko lyo-  
mpungulo ndjika. Pomweelo okuya mo  
omukuluntu ota gandja 10c nomunona  
5c. Moompungulo dhaantu ihamu yiwa  
nuupu.

Ngele taka pupyala noku nuupyu, INO  
KA SIIKILA UNENE, oshoka taka kanitha  
omeya ishewe omoluupyu.  
LUNDULULA OMALAPI OLWINDJI, O-



Omuyakulipangi Ruth Mweendeleli

PO OSHIPA SHOKANONA SHAA TUTE

Natango tandi ti ILA MBALA KOSHIPA-  
NGELO MANGA OKANONA INAKA KU-  
KUTA.

Okanona ngele ka kukuta, tashi ti ka ka-  
nitha iikunguluki oyindji, taka pumbwa o-  
kupewa iikunguluki moonkandja (Taka  
tulwa komakende).

### Epango edhigu

OKUKEELELA UUVU KU VULE OKU-  
PANGA. NOKUPANGA KUYELE KU VU-  
LE OKUPANGA SHO UUVU WA YUKA.

Ruth Mueendeleli

### OMUSEUM

Dha za kep. 1.

na omambo makulu etumo nongerki (argief).  
Ovakonakoni voiningwanima yefimbo la pita  
mombinga yekulo longerki va etelwa pope-  
pi nee.

"Oinima ei tai ke uya konima ohandi i  
fiile tate Eino Amaambo e i tule meshikula-  
fano, a twikile ko koshilonga eshi," osho  
omuhongifikola Lahja a tonga.

Shiimba we li pula nale kutya, omolwa-  
shike meme Lahja ina longa ofikola neudo?  
Omutumwa Kanyeku oku na eemhangela  
nomafaneko manene natango omolvoshilo-  
ngatumo. Pamwe ondjovo yOmuyapostoli  
Paulus ye mu tomha yo kutya, inandi hala  
okukala apa pa longwa nale oshilonga she-  
vangeli. Omesho aye okwa tauluka ongaba  
yOwambo.

"Oshilonga shomuseum onde shi longa  
ashike eshi nda teelela enyamukulo kEpa-  
ngelotumo," osho ye mwene a ti. Ou u  
hole etandavelo levangeli onawa nge to mu  
tula mongudu yaavo ho ilikanene.

# Omapulo nomayamukulo

Ndimunhu A. Naule, Walvisbaai:

**Ngeenge nda hombola okaadona, ndele mboli oke na edimo lihe fi lange ame onda hepeka eliko lange, ohandi futilwa mbela oinima yange ye a shune oku a dja? Ile ponhele yomufuko wange ohandi pewa lyelye ou e na okulongela nge oilonga yohombo?**

Tu dhimina po oondjo dhetu ngashi hatu dhimi po dhaamboka ya yono kutse Oku-dhimina po oondjo kashi shi oshinima oshipu nokuKalunga. Osha pula ombinzi yEpona lye lye ehamekwe.

Ino hepeka iinima, oshoka ohango inayi yonuuka, omwe yi dhana nawa nombili ngashi yi na okudhanwa. Ndishi iinima mbyoka oya li yohango ashike?

Ito pewa omufuko gulwe, oshoka naangoka kwa li we mu pewa ongoye mwenemwene we mu kongele. Ngele omwa kuthilathana po, nena otamu tsikile ondjokana yeni.

Ino kekelwa okufutitha omuhondeli ngoka a nyateke ondjokana yeni ngele oto shi pula mombepo ombwanawa hamondjahi.

**Nongerki onghwaevangeli, owa tokola shili u konde nge ngeenge nda efa ehengu eli ame ndi konge okakadona aka inaka mita nale?**

Popya nefelogongalo lyaandjeni notali ku lombwele shoka to ningi.

**Omufimba ndishi ota twikile okuhanauna po eliko lange mokuya koshipange-lo nokulandelwa oikulya tai wapalele omufimba?**

Ngele omukadhi gwoye, nena oto shishimba ashike nepa lyoye, ngoye to ipolithile ngaa mentu gwameme. Ye mwene ondi lwete ita neke unene, oshoka ela kali shi lyoye.

Yakiintu, yambukeni mpaka opo mwa tula Naule naalumentu ayehe mudhigu wu thike mpoka, ngashi yamwe ya yono nonokuli.

Jason Amakutuwa

## A LANGEKWA METOLOKOO LYOMBIMBELI

Omusitagongalo Matti Amadhila, Okahao okwa langekwa kEpangelongerki moshilonga shokulundulula Ombimbeli yOshindonga. Oye ta kala omutoloki omutiyali pamwe nomusitagongalo Eino Amaambo ngoka a putudhilwa oshilonga shika muEngilanda.

Tate Matti, okwa yapulilwa oshilonga she 1971. Ihe ethimbo alihe okwa kala i ipyakidhila nomakonakono gilongwa yuuteologi mboka e u ilongele moontumwafo nope na e-tegameno kutya ota ka mona mbala onkatu yaB. A. muuteologi.

He yaanona yaali, aakadhona ayehe, okwa pyokoka nawa mokukonakona omanyolo, onkene Epangelongerki oye mu langeke moshilonga shokulundulula Ombimbeli mOshindonga. Ompumbwe yomulundululi omutiyali oya li ya dhimbululwa unene kaakonakoni yoshilonga shoka mboka ya talele po ongerki yetu omasiku ga zi ko.



Onda li nda londa eshina tandi thindikile omuyevangeliste Johannes Ndimwedi negumbo lye sho taa tembukile kOvenduka. Otwa li twi igililathana nayo unene noya tala ndje ongogumwe gwomoyana. Eshina sho inali thikama we mpoka hali thikama shito, onda nuka mo mulyo. Mokunuka nani onda lyata kemanya nokugalangatela molutenda. Walyewo sho inandi lyatwa, kanda li ndi shi mpoka ndi li. Mokutonata onda adha oompadhi dhi li kombanda yolutenda. Kalunga okwa gu pamwe nangame nonda hupithwa.

Omugundjuka Natanael P. Shuutheni, (29) oha longo mOliindili nokwa kuminwa ehupitho lyoshiponga shono kwa li e na okumona. Kalunga ite ku etha nganyoko, osho ta ti.

### Elandulathano lyOmbimbeli

Onde ende megumbo lyaMoses lutano,  
Nda adha mo Josua ta tokola oohapu dhaRut,  
Te tsakanene mo nomukriste Samuel Iwaali,  
Ta zi megumbo lyaakwaniilwa taa hokolola Iwaali.

Esra naNehemia nEster omunashihako,  
Omwiinekelwa Job a hokololwa kOmupsalmi.  
Oondungemayeke oga zi muSalomo,  
Owala, nokukwata ombepo, osho ti igidha Jesaja.

Jeremia omutakumi, Hesekiel e mu kundana,  
Ofule Daniel mekolololo a hiya Hosea.  
Ye Joël, Jona, Amos naObadja ya fadhuka po,  
Jona naMika, mbaka ye ya tsu omukumo.

Nahum ya yi kuHabakuk, Sefanja naHagaia,  
Opo Sakaria naMalakia taa ka thika kuMateus.  
Markus ta popi nomushiinda she Lukas,  
Johannes ta yi klilonga yaAyapostoli kuRooma.

Okwa adhele ko Aakorinti yaali,  
Galatia naEfeso, Filippi naKolosa.  
Aatessalonika yaali, Timoteus Iwaali,  
Titus naFilemon omuholike, naahogololwa Aaheberi,

Emanya Petrus Iwaali, Johannes lutatu,  
Jakob kotokela elaka, Judas ta hala omukanka.  
Gweitaalo lya kola lyomuJesus Kristus,  
Matukila kEhololo, ngu tegelele ehulilo.



Rev. Toivo Pentikainen

### Omo eli mOwambo

Owa tseya tuu kutya omuyakuli gwaayakuligongalo mongerki yetu, omusitagongalo Toivo Pentikäinen, oku li ngashingeyi mOwambo. Sho tu li mpaka okwe, ku pulakene kOngwediva kegumbo lye ekulu, ihe otashi vulika hako e li ngashingeyi sho to lesa.

Konima yiiwike iyali tate Pentikäinen sho a galuka kuSoomi, okwa tungu efaneko lyomalweendo ge ngaashi tali landula mpaka: 23-25.6. moshigongi shoshitayingerki, mOnguta, Ondonga

30.6-3.7. moshigongi shaatumwa Aasoomi muGaub

4-6.7. moshigongi shoshitayingerki mUuninginino, Elondo

8-15.7. moshigongi shaanashilongatomo Ongwediva

11-13.7. moshigongi shoshitayingerki mUukwanyama, Ongenga

21-23.7. moshigongi shaayevangeliste naadiakoni moKavango.

Kalunga na hambelwe sho a egulula omweelo gwoshilonga shaatumwa aakwaPentikäinen. Oye li nawa egumbo alihe.

### OMUMBISOFI AUALA KUAMERIKA

Dr. Leonard Auala, omumbisofi gwongerki yaElok nomupresidende gwOngerki ya hangana onkwaevangeli paLuther muSuidwes, ota ka kala konyala iiwike ihamano muAmerika, ngaashi sha tseyithwa kombelewa yomumbisofi mOniipa.

Omalongekidho gomafaneko ngele oga tsu nawa kumwe, Dr. Auala ota ka thikama pehulilo lyomwedhi nguka Juni a ye kuWashington, oshilando shEpangelo lyaAmerika.

Pamwe omuwilikingerki Auala ota talelepo wo omahala gi ili nogi ili muAmerika shimpa tuu ethimbo e li pewa tali gwana. Epangelo lyaAmerika olyo lya hiya omumbisofi nolyo tali sile oshimpwiyu olweendo lwe aluhe. Ota ka galukila mpaka pokati kaAguste nuumvo.

## Eenhele dovapaani nadi shiivike adishe

Eindilo eli ola indilwa komufita woshilongatumo mongerki aishe Rev. Paulus Andreas, nola kufwa mehokololo laye omo a hokolola oukwatya woshilonga nhubi tau ehene komesho momapya etumo.

Tate Paulus okwa hokolola unene onhele yokuKongo oko ye mwene e li omutumba, nde okwa talela po yo eenhele dihapu omo etumo tali longwa kongerki yetu. Ota nyola ngaha kEpangelongerki:

Otwa li tu na omudo mudjuu 1971 omo-lwoikulya ya kongwa efimbo alishe notwa kala noumbada kutya, itatu fiki, ndele Kalunga e tu kondjela fiyo opaapa.

evangeli olo tali kongo ovanhu, haovanhu tava kongo evangeli. Vali omunhu oha hafe neenghono opo ye e liudite ouumbo. Eshi osha pendula omalipulo momufita woshilongatumo Omushamane Andreas omolwo- kwoongela Ovayeleele ponhele imwe, opo ngeno va kwafwe nawa.

"Fye otwa hokwa apa twa kala po nale, opo poilongo yetu. Ngeno tu ningilwe



*Omushamane David Haufiku ota kondjo nokulonga Aayeleele mOnyuulaye. Oshilonga she oshidhigu mpeyaka otashi pumbwa egalikaneno. Ndika egongalo lye li li omutumba.*

Pakutengeneka kwaye, Kongo oku na Ovayeleele 820. Kombinga yofikola okwa ti ngaha:

Ofikola yeshasho nekoleko oya kala noungone, kapa li pe na exwamo, ndele nande ongaha ovanyasha 8 va kolekwa. Omilongo mbali vomovakulunhu Ovayeleele otava ka konakonwa nonde lineekela vamwe otava ka kolekwa.

Ovashashwa ve dule 15 otava ka konakonwa yo opo ku shashwe vamwe neudo. Ovo va ninga nale ovakriste otwe va ningila eengudumbibeli momafiku mahupi ndele va hafa unene notava mono emhito di li ngaha ekweehenitwa komesho moukriste wavo. Onda koneka otashi pumbiwa shili okuninga oyoongalele ei luhapu notai pula yo oiyakulifo ihapu.

Neudo nda enda luhapu komapya mOyoondaha okuninga omalongelokalunga nonda mona nghee ovanhu vomOvakwanghala va hala okukundafana moimima yokomwenyo nova koneka elimatulo lomwenyo.

Omutumwa Paulus ota koneke unene elunduluko olo la holoka mokati nomonghalafano yOvayeleele voo vene. Ote i hokolola ngaha:

Vamwe otava tameke okulonga vakwao omikalo diwa dipe ngaashi moilonga nomokudiinina oinima yavo notu wete efimbo loyayakuli vomuvo oli li popepi.

Panghedi ei tate Paulus okwa tala kutya, otashi ka xupipika ouhapu wovayakuli Ovawambo mokati kOvayeleele, osheshi Ovayeleele tave ke liyakula voo vene nosho ekoko liwa. Kakele shapu koilonga imwe ngashi oyouhongifikola novalongindjovo osho omuhokololo a tumbula.

**Ovayeleele ova hokwa peenhele davo** Pefimbo eli otaku popiwa unene kutya,

lopo noku ka tala onunona ve uye kofikola noku va shunifa ko fiyo eefikola da tana keembinga adishe. Onda tala (Paulus) ehalo lavo netokolo lavo otali pumbiwa unene, nande itatu landula oinima aishe ya nyika omakamba nomalindedemeko.

### Ovaidifi Ovayeleele

Mokutalela po omapundo Ovayeleele onda enda yo kombinga yaNdonga naKavango ngashi nda endifwa kovatumwa meme Terttu Heikkinen natate Osmo Seppanen. Ekwatafano eli otali pumbiwa notali longo shihapu movayakulitumo nOvayeleele tava kwatakani-fwa momhepo imwe yopaKalunga.

Neudo mokulonga kwange onda mona eyakulo linene eshi Ovayeleele vamwe va tulwa melideulo okuudifa melaka lavo momalweendo. Otwa kala muvo nepuniko moyoongalele yetu nomeenghundafana nOvayeleele, kekwafo lavo oinima oya enda noupu.

Meme Terttu natate Sakaria ova eta po oupe muhapu eshi oinima imwe tai kundafanwa momalaka Ovayeleele voo vene pehe na omatoloko. Nomuvamwe mwa tukuka ehalo lokulesha eendada davo.

### Omakwafo eengerki dopoushiinda

Epangelongerki letu oli shii ku tuma omapandulo etu keengerki odo hadi tu kwafa nokwiindila tu longele kumwe nokomesho, tu tuminwe Salinde (a fika nale nokuli) naAnaniás, fye tu talelwe po omalupita nomalupita, opo tu hafe. Kalunga ota longo movapaani ve mu tambule. Tu ilikaneneni yo tu pewe eenghono. Hebr. 13:8

*Omushamane Syrja (76) nomukulukadhi gwe Anni (70) okwa tamekele oshilongatumo mpaka 1928 manga omumati nokuli. Oya longo mOndonga, mUukwanyama nokoKavango nohaa popi omalaka agehe ngoka. Metalelopo lyawo lyongashingeyi oya talele po wo omahala agehe ngoka.*

Oye tu lombwele ngeyi: "Ohatu kuminwa oilonga yaKalunga oyo ya pangwa medu eli, nde shi shiveni kutya opo Kalunga ta longo, satana yo opo e li."

Mefano kolumoho omwana ngoka ta longo mOnandjokwe meme Maija omukuluntu gwaapangi moshipangelo.



Oshigongi shuukumwe waAfrika (O.A.U) oshi li ngashingeyi miipundi yasho muRabat Morocco, moka mwa gongala aaleli yiilongo ye vule 20. Ehanganu ndika lyuukumwe waAfrika otali kundathana unene kombinga ya S.A. omolwaSuidwes osho wo tali kundathana onkalo yiilongo iikwawo tayi kondjele emanguluko muumbugantu waAfrika ngaashi Rhodesia, niitembukilwalongo yaPutu.

Colin O' Brien Winter, omumbisofi gwa-Damaraland ngoka a tidwa muSuidwes kepangelo lya S.A. naye wo okwa hiywa ko koshigongi opo a ka gandje uuyelee wonkalo yaavalelwamo muka.

Moshigongi shika Aawambo oya pewa esimano omolwekondjelomanguluko lyawo sho taye li ningi nomayinyengo taga popitha uuyuni. Oshipotha shondhalate osho shimwe sha tumbulwa mpaka. lilongo 41 yomiilongo yaAfrika ya manguluka oya dhika ehanganu ndika.

Amushanga omunene gwligwana ya hangana, Dr. K. Waldheim, naye okwa holokele moshigongi shika.

**E tu fiya po ombadilila muLuderitz**  
Eti- 6. 5. 72. omumati wetu Kristian Haukongo a li ha longo meembautu pondjete opo hadi pandekwa, okutauluka okudja mombautu nokuya ngeno mu ikwawo sha nyengana: mboli da kalafana kokule. Kristian okwa wila momeva mefuta. Okwa li ngaho ta kondjifa okuyowa ndele omeva e mu ehenifa kokule neembautu.

Ovalongi pamwe naye ova kendabala oku mu umbila eengodi ngeno a kwate mo, ndele sha nyengana. Eshi a djuuka olutivali, naye mwene okwa dimbulukwa itandi dulu sha vali. Okwa yelula ashike eke laye pombada a fa ta ti: Kaleni po nawa nokwa ka ningina ko, filu.

Opo twa teeleda noluhodi, omudimba wanakufya otaw umbwa mo naini tu ke u tukivikile? Mungadu ole ke mu umba mo eti-8. 5. 72. Okwa fiya po omufiyekadi nokanona kamwe. Meme Selma Haukongo nokamwaye, Omwene weefiye ne mu hekeleke.

J. Ndimwedi

## Suidwes otwe li lineekelelwa, ministeli

**Omufimanekwa Johannes Vorster, oministeli ya S.A. eshi ya talela po Suidwes ohani ei, oya lombwela ongudu yovatilyane mOshomeva kutya; Suidwes otwe li lineekelelwa ongoshitukulwa naanaa shimwe shaSuid-Afrika. Fye otwa itavela kutya, Suidwes oli na oukwatya walo vene wopainternationale, ndelenee fye oshinakuwanifwa shetu otu shi shii yo eshi tu na oku li wanifila. Hano ihatu pwilikine omapopyo o V.V.O.**

Oministeli Vorster, okwe shi yelifa nawa koilumbu mOshomeva kutya, omapopyo aeshe mekwatafano neenghundafana davo naHamushanga woiwana ya Hangana, ngaashi a tambulwa kovanhu, oipupulu yoo vene.

Omahokololo otaa ti kutya, meenghundafana davo omwa dile omafaneko ovakalelipo vo V.V.O. ve uye va kale mOvenduka ile muPretoria. Osho yo Suidwes ngeenge pamwe otali tukulwa, opo ombinga yokoumbangalanhu i pashukilwe ku V.V.O., manga ombinga yokoumbuwanhu, tai pashukilwa kuSuid-Afrika.

### S.A. ota ka yandja yo ehokololo

Fye otwa kundafanene eenghundafana di shii kulineekelwa. Eshi hamushanga ta ka yandja ehokololo laye ko V.V.O. ame naame ohandi yandje yo lange koshiwana sha S.A. naSuidwes. Hamushanga ota ka hokolola ngaashi e shi tala kombinga yaye, nde ame yo ohandi ke shi eta pambinga yepangelo.

**"Aaniipindi nooyene yoomina oya li ya ehamekwa, ihe kombinga onkwawo osha eta onkalo yi shi kotalika pokati komulongelwa nomulongeli gwe." Osho ompanguli gwoshipotha shaalumentu omulongo nayaali a popi eti- 7. 6. 72 mompangululo yopevi mOvenduka. Yahetatu oya geelwa noor 25 kehe, nenge omasiku 25 mondholongo.**

### Inaya monika ondjo

Aawambo omulongo nagumwe nombaatili yimwe, oya li ya pewa ondjo kutya oyo ya tsu aantu omaminimini ya ethe po iilonga, noya li aniwa taa keelele aantu kiilonga. Yatatu yomAawambo nOmbaatili inaya monika ondjo.

Okwa dhiladhilwa kutya ostrafa ndjoka ya pewa mboka yahetatu itayi ka nyanyudha oyendji (unene aatiligane), ihe ompangululo oye shi popi mo sha yela kutya.

"Uuna ompangululo yi ipyakidhila niinima ngaambika itayi shi pitika yi wilikwe komahalo gayalwe," osho ompanguli omusamane Kriel a ti.

Omageelo gayahetatu sho ga gandjwa, omupopili gwaanashipotha hahende O'Linn okwa pula Aawambo mbaka ya pewe ethimbo sigo eti-7 lyaJuli, nosha ziminwa.

Otaku tiwa epangulo ndika oloyo limwe lyomomangulo omaleele mompangululo yopevi (Landdroshof) yaVenduka. Melesho lyopafupi omanga inaaku gandjwa omageelo, omusamane Kriel okwe shi popi mo sha yela kutya;

"Ngele taku talika konkalamwenyo ndjoka yi na ngashingeyi ondilo, oshidhigu okudhiladhila kutya omuntu ota vulu ngiini okuutha onkalo ye nombili pwaa na omanyenyeto."

Okwa tsikile ta ti: "Oshipotha osha eta wo edhiladhilo kooyene yiilonga kutya oondjambi kaaniilonga itadhi ya yakula nande moompumbwe dhawo. Oshipotha osha li sha ende pamukalo gwombili," osho ompanguli Kriel a ti.

**Hano nye ngeenge mwa nyumuka pamwe naKristus, kongeni eshi shokombada apa Kristus ota kala omutumba. Diladileni eshi shokombada haeshi shopedu, osheshi omwa fya nomwenyo weni owa holekwa pamwe naKristus muKalunga. Kol.3:l-3.**

### Shoka tashi ka ningilwa S.W.A. otashi zi ku V.V.O.

Oonkundathana dhandje nekonakono lyandje omolwaSuidwes otayi ka uthwa kongundu yegameno lya V.V.O. ngele otayi ka tsikila natango, nenge sigo ompoka sha gwana manga, osho amushanga omunene gwligwana ya hangana a popya moshigongi shiifo muJapan.

MuRabat moshigongi shaawiliki yiilongo yaAfrika ya manguluka, Dr.Kurt Waldheim okwa ti, kutya mbeyaka onde ya lombwelele oshinima nkene shi li po noya li ya landula nawa mokupulakena. Oku na ashike iwiwe yimweyime ndi gandje ehokololo lyandje kEwilikongundu lyegameno lya V.V.O., opo li ka tokole shono tashi ningwa po.

Amushanga Waldheim muRabat, Morokko, okwa kumagidha S.A.kutya, ngele ite etha okudhina omaludhi gaantu, omangwandjulathano, oshinima itashi ka henukwa we moka.

## OMUWA HUPITHA NDJE MIIPONGA

**Omuwa, ulukila ndje ondjila yomikalo dhoye ndi yi dhiginine sigo kehulilo.**

Longa ndje oondunge, ndi pungule ompango yoye, ndi yi dhiginine komwenyo gwandje aguhe. Omeho gandje ga kelela po gaa taalele uwinayi. Tula ndje omwenyo, omoondjila dhoye. Gwanithila omuntu gwoye omauvaneko, o-

po u tilwe.

Tala, ongame nda yuulukwa oohapu dhoye. Tula ndje omwenyo okuuyuki woye.

Kwatha ndje ndi ende nepola lya yela, oshoka te kongo iipango yoye, omuntu gwoye.

T. Amuulo, Tsumbe

# Aaleshi otaa nyola kutya

## Omaluvala inaa imba tu kalafane

Ohandi kundifa ovakondjeli voshili unene ovo itava kofa nova kanifa oulae omolwokukondjela oufemba wovanhu.

Ame onda putuka omufita weenghwandabi da tate, kwa li eengobe domaluvala mahapu. Domaluwa, dilaula nosho tuu. Tate okwa li a pa eengobe oufemba okulila pamwe nokunwa pamwe, hadi nangala pamwe nosho tuu.

Ei inai hala okunwa, okulya oitunhwa yayo vene. MuNamibia otu li moshiunda to hange mo omaludi ovanhu vomaluvala mahapu ngaa-shi u a shi, ndele ihatu napele pamwe ihatu hafele pamwe.

### Oshiponga osha dja mouteku

Oto hange Nakahambulwe ta lotoka a dukumaneka omesho vati okwa tila oshilulu, onghoshi, omupwidi nosho tuu. Paushili wo vene oshilulu nande u shi ete opo ke ku lombwele kutya osheshi, ndelene ohe shi tila, omolwashike?

Okwa uda nale omahokololo oshilulu kutya, oshiponga. Ovalaule ove na otrauma (oshipute shokomwenyo pashiiwomwenyo) kutya, oshilumbu, oshilumbu.

Oluvala lutoka kalu shi shiponga vakwetu. Oilumbu oye mu fa ashike meendunge moulai nomeshito. Shilumbu ke shi shiponga. Oilumbu oya longifa ashike omukalo wetilifo, opo mu kale mwa itavela kutya yo oiponga.

### Okulifya ounye (frustrasie)

Otwa tekulwa notwa ulwa oitya ei "kafala, bobiyana" opo omunhu u lifye ounye kutya nani ame eshito li lili. Nopaife vahapu ove li meitavelo eli. Oto hange omunhu ta ti mooShuuya ohamu liwa oikulya ya fa yoilumbu.

Tala nee, omukalo umwe wa mana po oshiwana o oyou wa li hau longifwa kokaholo,

### Eyapulo tali monika mombinzi

Omuntu ngoka a lomona ombinzi ota kala wo a yapulwa noku li po omuyapuki momoho gaKalunga. Ngele oku li metente lyombinzi, nena ota tseye wo oshilongayapulo note shi mono. Ino tya ota tseye a gwana a pwa, aawe, Jesus ota ti:

"Shono to shi ningi nena ku shi shi, oto ke shi tseye komeho." Jesus Oye mwene ta yapulitha aantu Ye ombinzi. Ngoka ti igandjele Onziona ota ka uva ko nawa nke-ne Jesus te mu fatululile nawa-ondjundo yombinzi Ye, nonkene tayi mu yapula.

Ndele tse otu na okwiilonga wo tu tseye oonkondo dhombinzi nompolo yetu mpo yi thike nonkene Jesus te tu yapula.

Otwa mono kutya eyapulo olyo eyoololelwo Kalunga moku mu opalela." One kamu shi yeni yene, oshoka mwa kulilwa niikulila iidhigu, 1Kor.6:19,20."

Meleka ndika ombinzi otii tu lombwele

omulumenhu mukweni eshi e li kwatelela po-shi nokutalwa peshito po kape na omukifi. Apa ota shunduka mominute nhandi ashike.

### Emanguluko ola kala ko

Omukuluwonale oha ti: "Ouwa ihau monika nokapala kayela." Ngenge ou na nande omukulukadi woye muwa ha yakula ovanhu, ino mu mona nokapala kayela ndele owa longele po.

Oto ti omwa hala emanguluko, nye itamu li kondjele. Onda hafa eshi emanguluko la-Namibia inali ya diva, osheshi ngenge oshinima owe shi mona noupu, ou na vali oku shi kanifa noupu. Sha hala kutya, oludalo laNamibia italu ka efa edu lavo noupu osheshi ove li mona noudjuu.

Kalunga okwa hala okutala eitavelo leni kutya, oli fike peni eshi natango inamu manguluka. Tala evangeli eshi le uya mOwambo, ola kosha eedula ngapi opo mu li dilulule?



Oshilongatumo inaashi pula ashike oonkondo dhopambepo, ihe oonkondo dhopalutu otadhi pumbiwa wo odhindjindjindji. Aalumentu mbaka oyi ipyakidhila nomatungo momapya getumo kUuninginino.

kutya tse eliko IyaKalunga, oshoka okwe tu hala tu kale Ye atuhe, okwe tu hogolola e te tu kashula nde te tu nothele ombinzi nde te tu yoolola tu kale melongelokalunganya lye.

Oshihako sheyoololo osha sitombwa mutese koohapu ndhika: "Onke ano Jesus a hepelwa pondje yoshilando, opo a yapulithe oshigwana she ombinzi. Natu ye ano kuYe twaza moontanda tse tu humba te okudhinwa kwe," Hebr.13:12,13.

Jason Amakutuua

Kayala ota ti, "efyo noluhepo oshi fike pamwe." Shiwana shange, Kalunga iha nyengwa kusha. Pamwe V.V.O. ta ponyo oku tu mangulula. Kalunga mwene oku shi shi ashike kutya, opamukalo ulipipo te shi ningi.

### Oshili ihai fi

Hauxuuninwa onda hala kutya, oshili ohai mangulula ndele ohai dengifa yo ovanhu. Nexupifo leemwenyo detu oshili yalo ya dipaifa Omona waKalunga.

Vahapu ova tala kutya, ovapuli voufemba womunhu ovapukifi voshiwana. Hasho. Kalunga ta ti: "Samuel, va ningila ngashi va hala." Paife oshiwana eshi osha hala oufemba wopanhu, onghee ovaleli vetu, ningileni ovanhu eshi va hala.

### Haindongo nande denga

Eyeletumbulo eli ohandi li kwatakanifa noshili. Nande ovaleli va konge omatilifo itava ka mweneka oshili yoshiwana kutya, katu na oufemba, ndele katu u na tuu shili.

Ohandi mu kundu nohole yopashiwana, Valde Namhunya



### OMUKWETU

Oshifo shOngerki onkwaevangeli paLuther yomOwambokavango  
Die Nuusblad van die Evangeliese Lutherse Owambokavangokerk  
Ohashi nyanyangidhwa mOniipa,  
Omukuluntu gwoshifo/Hoofredakteur omubisofi Dr. Leonard Auala,  
Amushanga/redakteur Rev. Sebulon Ekandjo  
Ondando yoshifo komumvo muSuidwes-Afrika R1.00, kombanda yomafuta R2.00  
Oondando nomambesitelo naga tumwe kOmukwetu, Oniipa, P/B 2013, Ondangwa, S.W.A.

Omatseyitho gomuntu mwene pashinyolwa shuule woondeimi 1 otashi futwa R1.00  
oondeimi 2 otashi futwa R1.90  
oondeimi 3 otashi futwa R2.70  
oondeimi 4 otashi futwa R3.40  
oondeimi 5 otashi futwa R5.00  
Oto vulu okutuma wo efano Iyaashono wa hala shi tseyithwe

Owambokavango Church Press  
P/B 2013 Ondangwa, S. W.A.

## Ford oshihauto shopashinanena

POMISIONI YATSHIKUKU OPE NA OFORD YOOTONA NTA-NO, ENDELELA U YI IMONENE PO NOORANDA 2 500.

PAMWE TO NYOLELE KO, SHANGA ANO NGEYI:

Fr. G. Heimerikx, R. C. Mission, Otshikuku, Posbus 7, Oshakati, Owambo.