

# OMUKWETU

Registered at the General Post Office as a Newspaper

## Auala a ningi Opelesidende yaVelkswa

Omumbisofi gwongerki yaELOK, Dr. Leonard Auala, okwa hogololwa a ninge omuwiliki gwongerki onkwaevangeli paLuther ya hangana mu-Suidwes "Die Verenigde Evangeliese Kerk in Suidwes-Afrika" (VELKSWA).

Ongerki ndjika ya hangana oya za moongerki mbali dhaavalelwamo muSuidwes, Ongerki Onkwaevangeli paLuther yEtumo lyAandowishi mUushimba (ELK) nOngerki yomOwambokavango (ELOK).

Oshigongingerki shotango shuukumwe woongerki ndhika mbali, osha li sha ningwa mOshimbingwe nuumvo pehulilo lyaFebuluali. Omapangelongerki goongerki ndhoka, dha hangana ogo taga kala Epangelongerki lyongerki yahangana.

Moshigongi shotangotango shuukumwe wOmapangelongerki goongerki ndhika, shoka sha gongala mOvenduka eti-21. 4. 1972, osha hogolola gumwe gwomaawilikingerki yoongerki dha hangana a ninge omunashipundi mEpangelongerki lyuukumwe.

Oshigongi osha hogolola wo omunyoleli gwasho ngoka ta longo oshilonga shoka omimvo hamano, omusita Albertus Maasdorp, mOvenduka, oye a hogololelwa oshilonga shika.

Pakotampango lyOngerki ya hangana, omuwilikingerki gwongerki onkwawo oye ta kala omunashipundi omupeha gwEpangelongerki. Shika osha kala shi indakana unene aamwameme yomongerki twa hangana nayo,

### OMUWILIKINGERKI muELK

Mongerki okwaevangeli paLuther yaavalelwamo mUushimba, (ELK) omwa kala omalongekidho omanene okuza koshigongingerki shawo 1970, opo ya hogolole omuvalelwamo gumwe a ninge omuwilikingerki. Ehogololo ndika otali ka kala ko ihe muSeptemba nuumvo nomadhina gaasita yatatu oga tumbulwa nale nokuli moshinima shika;

Omusita Elifas Eiseb, omusita Albertus Maasdorp nomusita dr. Lukas de Vries.

Omagongalo oga pewa emanguluko lyokwiithana kehe gumwe gwaambaka yatatu opo ye mu mone ngele inali mu tseyo shito lyo li vule okumona uuyebele nge tali ka ya koshigongi shehogololo.

Sigo onena, omusamane H-K Diehl, oye a kala omuwiliki gwongerki ndjoka. Omuwilikingerki mongerki ndjoka ohi ithanwa Preses.



Preses H-K. Diehl

oshoka ongerki yawo oya adhika inaayi thika manga nawa pomuthika gwokuwilikwa kaavalelwamo yo yene.

Oshigongingerki shongerki yawo tashi ka kala ko nuumvo muSeptemba, otamu ka kala ehogololo lyomuvalelwamo gumwe ngoka ta kala omuwiliki gwongerki ndjoka. Omuwilikingerki Hans K. Diehl, oye ta longo manga oshilonga shuupeha mEpangelongerki lyaVelkswa.

Epangelongerki lyaVelkswa, otali longo

naanaa ngashi Omapangelongerki goongerki ndhoka, kutya otali ka tsakanitha omato-kolo goshigongingerki shongerki ya hangana. Shika otashi ningwa melongelokumwe nokangundu kokupititha iinakugwanithwa yehangano nkoka iilyo yako ya za miilyo yEpangelongerki ndyoka. Epangelongerki otali longekidhitha wo oshigongi shaasita yehangano ndyoka.

### UUTHIKEPAMWE WA INDILWA KAAYEVANGELISTE

Oshigongi shaayevangeliste aaluudhe yoongerki oonkwaevangeli paLuther mu S. A. oya pula ya kale ye thike pamwe naasitagongalo yoongerki dhawo.

Aayakulingerki mbaka ye vule 60 moshigongi shawo muMapumulo, oya pula ya kale haa futwa naanaa ngashi aasita yongerki yawo, osho wo ya kale haa mono ompito yokuhogolola aawilikingerki yawo, yo ya kale ye na uuthemba wokutopola omasakramendi omayapuki ngashi wo, aasita.

"Ngele tse aauvithi yevangeli nkoka omasakramendi ga kankamekelwa, oshike nee tashi tu imbi tu ga topole?" osho ya pula kaawiliki yawo.



Omusitagongalo Elia Haipinge, ehokololo tala Okahao, ep. 3

## “Omahooli otandi ga fike”

“Okuza mpaka otandi lyata omahooli nokape na nando esiku limwe ndi ka lyate kombiliki,” osho omuhingi gumwe a popya manga a ligalala nekende lyokuka ta nu.

Omuhiingi nguka oye gumwe gwomomathele ogendji tu ga na pethimbo lyetu mboka taa hingi nomatokolo gawo yene ga kola. Inaa hala okusimaneka nando omuntu te ende pamwe nayo moshihauto nenge taye mu tsakaneka. Oshilanduli kehe gumwe oku shi shi nkene sha ty.

Aahumbatwa oyendji miihauto yomOwambo oye ende nomalimbililo none-tilo konyala ethimbo kehe, omolwashoka pamwe ye na einkelolo eshona maa-hingi yawo. Komukalo nguka osha konekiwa opendji nolwindji kutya, aahumbatwa oya nyengwa okulya nokunwa manga inaaya thika nkoka ya hala ko omoluumbanda. Manga kombinga yaa-hingi oya kala ya vululukwa nombili nokupegeya noshihauto mondjila manga eke ekwawo lya dhiginina ekende.

Gumwe okwa tumbula kutya; “Ngele owa hala u kale nomwenyo, kala pegugumbo nombli.”

Shika itashi vulika aluhe. Uuthigona noluhupo otalu tu tumbu pomagumbo tu ka sile moondjila dhaSuidwes.

Pethimbo ndika nge tatu popi aadhipagi, itatu dhiladhila ashike mboka ye na omagonga nenge oomboma noondjembo. Ihe otu na wo mboka taa kanitha oomwenyo odhindjidhindji omoluu-hethi nenge moluuhasha nomolwomatokolo gomuntu mwene itaaga tungu.

Osho wo nge tatu dhiladhila aalunga pethimbo ndika, hayo mboka ashike taa teya iinyangagongalo nenge oombaa-nga, ihe naamboka taa yaka oomwenyo dhaantu miiponga yiihauto. Osho wo omaliko gawo ngoka ga li ge ya pula oomvula odhindji oku ga gongela ye gi imonene, otaga kana po esiku limwe alike.

Omolwaayihe mbika, Ewilikongundu lyiiyenditho yongerki olya kwatwa koshimpwiyu oshinene okugongela aahingi yongerki ayehe, opo ya dhimbulukithwe natango ondilo yomuntu neli ko lye, nonkene mbika ayihe iyali tayigamenwa pahalo lyaKalunga.

Ehokololo tala kepanja 7, “Ovashingi voihauto va pandula oshoongalele.”

“Hane aanene mu vule mboka tamu ya endhitha, pulakeneni wo shoka taye mu kumagidha nenge taye mu lombwelle,” osho ya li ya lombwelwa moshigongi shoka. Ihe osho wo sha pumbiwa okutseyika komuhingi kehe te ende moondjila dhaSuidwes alihe.

linima tayi landula oyi shi okudhimbulukiwa aluhe komuhingi okugamena

## A alukila vali kOwambo

Kaume koshilongatumo, meme Salinde Xoagus, okwa itavelelwa vali kEpangelo a alukile mongerki yetu nokulonge oshilongafano shaye apa.

Meme Salinde, okwa kalele mokati kOvaye-yelele muKongo, oivike ihamano, 1971 ndee osho e shi ningila Ovaye-yelele venya, itashi ka dimbiwa vali mOngerki ei. Paife oku li mokati ketu oule weehani nhatu noshe tu ye-yelele kutya, Kalunga ota ka punika oshilonga shaye penya muKongo.

Omuufitaongalo woshilongatumo, Paulus Andreas, mehokololo laye lomudo e li shangela kEpangelongerki okwa tumbula olupandu lavo omolwaashishe hashi ningilwa etumo mongerki yetu kovamwememe hava di meengerki dimwe poushiinda.

“Omwe tu kwafa shili moinima imwe inene kamwiishi,” osho tate Andreas a nyola.

Meme Salinde ou kwa kala yo melongekido a tumwe kongerki yavo moshilongatumo kuBostwana, okwa longele apa nomutima aushe. Okwa li yo a shikulwa metalelopo laye komufita Annanias !Gao! gaseb, naye a dja mongerki omwameme mOushimba.

Mefinamhango lOngerki ya hangana, Velkswa, oshinakuwanifwa shimwe sha fimana osho okukonga ondjila iwa okweehenifa oshilongatumo komesho.



Meme Salinde Xoagus

## Oshikalimo melongelokalunga lyopakriste

Oshikalimo shalyo oshi na oombinga mbali, 1. Shono Kalunga te shi ningile egongalo, 2. Naashono egongalo tali shi etele Kalunga. Shono Kalunga te shi etele egongalo lye otatu vulu oku shi ithana osho esakramendi (sacramentum) naashono tashi gandjwa kegongalo otatushi ithana ondjambo (sacrificium) eiyambo.

Esakramendi lya tumbulwa mpaka olyo esilohenda lyaKalunga he li tu pe melongelokalunga omagano. Otali monika moohapu dhe nenge mUulalelo Uuyapuki. lina mbino oyo ehuku lyelongelokalunga. Egongalo uuna lya gongala oli na eitaalo ndika kutya, Omuwa opo e li mokati kalyo nota topola omaganohenda ngoka.

Ondjambo nenge eigandjo lyegongalo, uuna ndoka egongalo tali hedha kuKalunga meifupipiko noku mu hempululila oondjo dhalyo noku mu yaala oompumbwe dhalyo nokutaamba kuye omagano ngoka Kalunga mwene a hala oku li pa.

Otali hempulula wo eitaalo lyalyo, otali mu hambelele noku mu simaneka. Ashihe shino tatu vulu oku shi ithana ondjambo yegongalo. Okukalathana kwesakramendi nondjambo oku li ngeyi kutya, esakramendi olyo omukanka gwondjambo. Shoka otashi ti egongalo kali na sha okweetela Kalunga ngele inali pewa sha tango kuKalunga. Ihe ekwatathano pokati kiinima mbika iyali enene wo kali shi okuyoololwa nuupu.

### Olye ta longo melongelokalunga lyopakriste?

Elongelokalunga olyo oshilonga shegongalo,

oomwenyo odhindji nomaliko nge tayi moshihauto she.

lipule ngele; a) oombiliki omo dhi li, b) ngele oolamba otadhi tema, c) ngele okwa makela iinuwa iilulu d) ngele okwa geya e) nongele okwa humbata aantu nenge iinima yilwe nenge

onke olyo tuu omuningi gwalyo. Lyo lyene haaluhe egongalo alihe tali longo, ihe olya gandja wo ombinga yimwe kaasita ya uthilwa oshilonga shoka. Oyo ya fa aakwatelikumwe yelandulathano lyegongalo. Ihe nando ongeyi, onkene ngaa oshilyo kehe me-gongalo oshi na oshilonga shasho shi ili pamagano gasho okutunga olutu lwaKristus. Ef.4:8-13.

Melongelokalunga siku lya gongala omu na ano oombinga mbali tadhi longo, a) egongalo ndyoka lya gongala b) naamboka ye na oshimpwiyu sholiturgi. Mokulonga ayehe mbaka oye na ekwatathano pokati kawo.

Egongalo alihe ohali longo unene mokwiimba manga omuliturgi ta longo mokulesha Ombimbeli nomokugalikana. Omuliturgi kee shi omuyakuli pokati kegongalo naKalunga, aawe. Hangaashi omupristeli gwAaisrael ngoka ta gandjele Kalunga eyambo lyegongalo nokombinga onkwawo ta yalulithile egongalo omaganohenda gaKalunga. Egongalo ekwakriste olyo lyene aasaseri aayapuki 1Petr.2:5, oshoka omuyakuli gwetu ogumwe awike, Jesus Kristus.

Ihe nando ongeyi, oshilonga shomuliturgi oshi na oombinga mbali; kombinga yimwe ota topolele egongalo omagano gaKalunga medhina lye, kombinga onkwawo medhina lyegongalo te etele Kalunga eyambo lyalyo. Oshilonga shoka ohashi monika nawa powalitali mokuholoka kwomusita mpoka. Nge ta longo medhina lyaKalunga ota taalele egongalo nenge ta taalele kowalitali nge ta longo medhina lyegongalo, ngashi wo egongalo lya taalele kowalitali. Ihe ita vulu okuninga ye mwene shono a hala.

oku li meulumo ewinayi.

Komaipulo gaambika ayihe, nokeopaleko lya kehe shimwe shaambika ngele osha tumpakana, nena egameno olya shilipalekwa, kakele kiiponga mbyoka yaa shi okuyandwa.

# Oshilonga shOmbepo yaKristus

kuFestus Ashipala

Shoka tashi pe uuyuni omwenyo, inashi gandjwa panyama, oshoka ngele ehupitho olya ningwa monyama andola uuyuni owa li tau vulu okwiihupitha wo wene. Ombepo ayike tayi tula omwenyo Joh. 3:5-8.

Oohapu dhaKalunga odhi na okuuka kopambepo, hapanyama. Ombepo otatu uvu ewi lyaKalunga notatu itaale. Ombepo kayi shi oshinima shi shi ku dhiladhilwa e to shi adha kondambo, ihe oyo oshinima shi shi okugumwa.

Ombepo otayi ningi oshikalimo shOkris-mesa noshopasa yi kale yi shi okugumwa. Elaka noshilonga shOmbepo otashi uvitha kutya shoka sha ningwa momasiku giituthi mbyoka Okrismesa nopasa kayi shi ashike iiningwanima yomehistoli lya ningwa sho pwa piti oomvula 2,000, ihe oyi na okukala yoshili methimbo lyetu wo.

Onawa ngele mompungulo yomiti omu na omiti odhindji, ihe itadhi kwatha sha ngele odha pungulwa ashike moosikopa. Odhi na okugandjwa kaavu ye dhi longithe. lilonga yehupitho lyaKalunga mbyoka ya ningwa esiku lyOkrismesa nomopasa, otayi vulu yi tu kalele ngashi omiti mosikopa, kokutya itayi longithwa komuntu. Eitaalo lyomomutse kali shi eitaalo. Omuyapostoli Jakob ta ti:

"Ngoye owi itaala kutya Kalunga ogumwe, oto ningi nawa, noompwidhuli odhe shi itaala wo."

Shoka sha pumbiwa osho ekwatathano lyomuntu naKalunga, opo oshilonga shaKristus shi adhimine omuntu, ye a mone edhimopo lyoondjo nemanguluko nenyanyu.

Jesus okwa popya shoka Ombepo Ondjapuki tayi ningi; Omuntu okwa pumbwa Omupopili. Muye mwene omu nuuwike nuuthigwa. Jesus ta ti: "Itandi mu etha oothigwa."

Ombepo Ondjapuki kayi shi ashike oper-sona ndjoka tayi thikama momuntu gumwe, ihe oyo omuvali nomudhiki gwegongalo. Esiku lyetililo lyOmbepo Ondjapuki oyo esiku lyevalo lyongerki. Egongalo nongerki oyo oshilongitho shaKalunga okuyakula aantu ayehe oku ya yambula noku ya pepalekela okukalamwenyo kwawo.

Ombepo Ondjapuki oyo uukwatya waKalunga mokati ketu, momuntu gumwe nenge mongundu. Otatu kala tu uvite otse aakriste nenge ongundu yaakriste ashike ngele tatu inyenge mOmbepo. Kapu na etungo lya kola ngele Mbepo Omuyapuki kee mo mongerki yaElok.

Otatu inekele esiloshimpwiyu lyaKalunga nomitima dhetu adhihe. Na unene otatu vulu okwiinekela mpoka pwa na euvito lya-sha nokumona kwasha. Kalunga ota vulu okuholama. Kalunga ota vulu okukala kee po.

Ihe nando ongeyi, oye opo e li. Mokukala muudhigu ohole ye otayi kala oshinima shopopepi. Shoka tashi fike okukalamwenyo kwetu otashi vulu shi shituke eyambeko kutse. Ihe moshinima kehe tu kale tu shi shi kutya, ha halo lyetu li na okugwanithwa, ihe ehala lyaKalunga oli vule kokule omahalo getu.

## OMUPANGI GWETU HELMI KUBOTSWANA

Omupangi omutumwa Helmi Makkonen, ngoka a longa 1965-1970 koNakayale nokwa ka fudhile po kuSoomi, ina zimininwa weKepangelo e ye kOwambo, onke ngashingeyi meme Helmi okwa tameke oshilongatumo mokati kAaherero, mevi lyaBotswana kuuzilo waSuidwes.

Omwamemengerki mUushimba, (ELK) oya tameka 1970 oshilongatumo kuBotswana nkoka taku longo omusita Josua Musutwa, ngoka a li ta longo pamwe nomupangi Christa Zander ngoka a manene ko oondjenda dhe ombadhilila omolwomulendu gwomumvogu (1971).

Meme Helmi okwa thika nale muSehitwa, ehala lyetumo nkoka, pehulilo lyaApillili. Natango otatu mu tala a fa e li mokati ketu, oshoka oongerki ndhika mbali odha thiki melongelokumwe li thike mpoka.

Nokuli meme Salinde ngoka ta kala mokati ketu kuKongo, oye omutumwa gumwe ngoka a yapulilwa oshilongatumo shokuBotswana.



## Omagongalo oga pita nawa

Omagongalo 11 gomomagongalo 45 mongerki yaElok, otaku tiwa oga piti nawa montenge-nekelafaneko yelongitho lyiimaliwa yomumvo 1971, osha popiwa kuamushanga omukuluntu gwongerki nomudhiginini gwiiniwe yaElok, Rev. Matias Nghipandulua.

Metulokumwe lyomiyalu dhegongelo lyiimaliwa momagongalo, omudhiginini gwiiniwe ota pandula omagongalo 11 ga piti nawa noinaga pumbwa ekwatho ngashi hali topolwa kongerki omumvo kehe pehulilo lyomumvo. Omagongalo gatano gomwaangoka ga sindana ogomOndonga.

Oshigambo, Oniipa, Okankolo, Ontananga nEheke.

Moshitayingerki shuninginino; Okahao, Onangalo nOnesi.

Moshitayingerki shaKavango; Mupini naMpungu. Nomoshitayingerki shUukwanyama: Endola.

Ndjika oyo onkatu onde ya katukwa noku shi yeleka nesindano lyomagongalo 6 ageke omumvo gwa tetekele 1970.

Okutsakanitha linakugwanithwa yegongalo osho etuno limwe lyomutima gwegongalo ndyoka sho li na omwenyo notali fudha. Noshwo wo liyimati yomayambeko geyakulo lyaanashilonga ayehe taa longo moka.

## KEGONGALO OKAHAO OTATU ILONGO OSHINDJI

Ngele otwa hala okwiilonga sha shomainyengo gomagongalo mongerki yetu, pamwe kegongalo lyaKahao mOngandjera, otu na oshindji okutumbula.

Egongalo ndika inali dhiginina edhina lya-lyo ndyoka lya lukwa komutumwa Nakambale, ngoka a tameke oshilonga shevangeli mOngandjera muMai 1871. Rehoboth, oyo edhina lyegongalo ndika lyotango.

Aashashwa yotango oya li yahamano 1906. Ngashingeyi aakriste yegongalo ndika oya li 9,622 momumvo 1970, ihe pehulilo lyomumvo 1971 opwa yalulwa aakriste 10,229.

Oli na aasita ye li miilonga yatatu nomutime ta li oshikwiila shevululuko. Aakriste mbaka ohaa ende oomaila 24 sigo 30 nokuli nge taa ya kelongelokalunga (oomaila odhokuya nokushuna kumwe.)

Olya vala egongalo limwe alike, Etilyasa. Omegongalo ndika ongerki yiipeleki oya

thikama tango mOwambo kiimaliwa yaakwa negongalo yo yene. Omumvo 1970 olya li esindani mongerki ayihe miiniwe yalyo. Nonumvo oli li mongundu ndjoka.

Omumvo 1971 olya gongele iiniwe yalyo ayihe kumwe R6336.00. Walyewo mbyoka ya longithwa mpo yi thike. Omagongalo omakwo ndyoka lya gongele pombanda olya adha R4000.00. shila. Aagundjuka yalyo moshigongi shaagundjuka yongerki aylhe 1971, oya longitha R550.00. Mbyoka inayi longithwa inayi tseyika mpo yi thike. Omagongalo omakwawo ndyoka lya longitha pombanda olya li R300.00.

Osho oshilyo shimwe molutu lwaElok, shi li sha tya ngaaka, Omusita omugundjuka Mika lilonga mehokololo lyegongalo ndika lyomumvo 1971, ngashi lya tuminwa Epangelongerki ompumbwe ontitatu e yi tumbula oyo egalikaneno lya na ezimbuko kegongalo ndika.



Omusitagongalo Matti Amadhila, Okahao, oye omugundjuka kwaayehe. Egongalo oli na oondjakulwambinga ntano.

# UUKRISTE NUUVU

Omuwa Jesus sho a tumu aalongwa ye omulongo nayaali, okwe ya tumu noohapu ndhika: "Shaa mpoka tamu ende mu ya lombwele mu tye, oshilongo shegulu sha hedha ko. Aludheni aavu, yumudheni aasi, pangeni aanashilundu, tidheni mo oompwidhuli." Noshwo wo aatumwa ayehe aakwawo oya tumwa noohapu ndhika.

Aatumwa yotango ya zi kuSoomi ya mono mbala aavu otaa pumbwa okupangwa. Ihe oya nyengwa, inaa mona omiiti dha gwana no inaa igilila okupanga aavu, oshoka oyo oonakulonga niikaha. 1908 omundohotola gwotango e ya kOwambo. Okwa mono uudhigu wi ili nowi ili. Nale nokuli Aawambo ya kambadhala okukwathathana nokupangathana. Oonganga dhAawambo dha li hadhi panga nokutsinina, nokuhupila, okuninga ohula okuteta oompalo nokulongitha iigwanga n.sh.t. Ihe odha longo pandunge dhaantu. Uuyelee wajesus inau minikila oondunge dhawo. Aavu ya pangwa koonganga dhAawambo, inaa mona ekwatho ewanawa. Olwindji ya adhika ya loloka unene nasho ya zi konganga uuwehame wa dhiginine noonkondo, siku limwe ya mana oondjenda dhawo mokupangwa nenge konima.

Uukriste wa taandele kooaha mOwambo naantu oyendji ya mono uuyelee, oya etha iinima yuupagani, ya etha oonganga noyi ikongele ekwatho miipangelo ya dhikwa kaantu aakriste.

Ngashingeyi oomvula omilongo hamano nambali, odha piti kuku Selma Rainio sho e ya huka nuuyelee wokupanga. Elunduluko lya monika tuu? Eeno, olya monika. Aakadhona oyendji Aawambo, oya longwa mosikola yuupangi. Iipangelo opo yi li koombinga noombinga. Omumati gumwe, omunandunge, a tameke okwiilonga opo a ninge omundohotola gwotango Omuwambo. Aantu oyendjiyendji otaa ikongele ekwatho miipangelo.

Ihe uuyelee inau adha koombinga adhihe. Natango oonganga dhAawambo otadhi longo. Pashiwambo aantu ayehe, aatiligane

## Shi ningeni okudhimbulukwa ndje

Jesus okwa kutha oshikwiila nokwe shi laleke nuuyamba, nokwe shi pe aalongwa ye. Nokwa kutha oshitunga a hambelele nokwe shi ya pe, nokwa ti: Nweni mo amuhe, shika olutu lwandje nombinzi yandje, uuna tamu shi nu, shi ningeni okudhimbulukwa ndje. Elombwelo ndika lyaJesus olya pumbiwa ngaa?

Eeno, olya pumbiwa komukriste kehe, oshoka sigo onena nge to ka taamba olutu nombinzi yajesus, ito zi po ino lombwele, shi ningeni okudhimbulukwa ndje. Ote vulu ngaa okudhimbwa Omuwa gwandje? Ndi dhimbwe ngaa nguka a sila ndje, ngoka alelelwa ndje komushigakano, ngoka a mona iihuna molwandje?

Ondi ku dhimwe ngiini Omuwa gwandje. Ngoka wa kutha ndje mokusa nomepangelo lyasatana, nda li omukani nomugeelwi. Ino kutha ndje mo noshingoli nenge noshiliveli, aawe, onombinzi yoye ondjapuki.

Jesus gwandje kwatha ndje ndaa ku dhimbwe manga ndi na omwenyo. Omuwa dhiginina ndje ndaa ku dhimbwe nandena nde, nando satana na kondeke ndje ongotime tayi uulu. Oshoka nda nyatipala omolwombinzi yoye ndjoka tayi koleke ndje

naaludhe haa panga, oyo oonganga. Meholololo ndika oonganga odho oonganga dhAawambo, hadhi panga pamikalo dhuupagani.

Ngashingeyi otatu ka tala omikalo dhi ili nodhi ili tadhi longithwa mokupanga pashiwambo. Otu na wo omahokololo gamwe gaavu yokOnandjokwe. Ayehe ya pangwa momagumbo manga inaa holoka monasaresa.

## EPAHA

Epaha tali talwa olyo oshiponga oshinene. Onke ano, ngele omukulukadhi a vala uunona uyali uukwanambuyu, otaa dhiladhila kamwe ngele otaka yonuka po, onawa. Olwindji okanona okashona ke vulike kokawawo otake ethiwa po. Itaka pewa iikulya ya gwana, itaka mono omiiti ngele take ehama nenge taka pangwa koonganga dhAawambo sigo taka mana oondjenda dhako mbala.

Esiku limwe aakuluntu otaa kongo ekwatho lyonganga, opo ya pangwe epaha. Omazimo agehe gaali otaga pangwa, oshoka otaga dhiladhila otaa mono oshiponga shokuzinda ngele itaa pangwa. Omukulukadhi noyana otaa tilika. Aantu inaa hala oku ya guma nenge oku ya talelapo, manga inaaya pangwa. Shaa tuu omukulukadhi a vala ota pewa iigwanga yokunwa. Ita pitikwa okweenda pondje sigo a "yogwa mo" ngashika haa ti. Onganga otayi ti omukulukadhi e na okukala megumbo ethimbo li thike peni. Ngiika omwedhi gumwe ngele gwa piti ota pangwa moshiyayo shepaha. Ota yogwa momeya giigwanga, nuunona wo. Ayehe oye li popepi noshilambo. Omeya taga ende mo.

Aanezimo ayehe otaa pewa iigwanga yokunwa. Omukulukadhi ota shatwa. Tashi ti momaako ota tetwa iilalo iile. Ombinzi tayi ende moshilambo. Koshilambo otaku kuthwa evi lya pilulwa nombinzi nomeya giigwanga, niilalo tayi gwayekwa. Esiku limwe iikaha yuunona tayi shatwa (tala okushata komeho). Onganga opo yi kwathe moshilonga shika shokupanga epaha otayi futwa nawa, iikombo, oongombe, omihanga n.sh.t.

Aapangi mOnandjokwe



Omulongwandohotola muunamiti, Naftali Hamata, ngoka a tegelelwa nehawo enene moshigwana shika okupepaleka amalutu taga kamwa. Oku li ngashingeyi ku S.A.

omolwetumbulo lyoye tali lombwele; "Shi ningeni okudhimbulukwa ndje."

Onda hala okukala pungoye, dhiginina ndje ano Omuwa gwandje.

I. K. Diogenus Nakashole

## Kanda li ndi shi apa ndi na okukala

Ovakwetu, onda li mekutu, inandi kala ndi shi apa ndi na okukala. Paife osha yela nee nohandi yandja apa ohadelesi yange.

Ev. Immanuel Kamho, Omunyekadi, Ondobe, Pk. Oshikango.

Oku ndi li eumbo lange, ame handi ka longa ngaa kOkatope.



Ev. Josua Nghatanga

OSHIGWANA SHA GWILA MOKANA KONYALO

"Nge wa hala okweendelelitha eshundu ko lyoshigwana, shi ekela ashike mokana konyalo," osho sha konekiwa noshahokololwa komuyevangeliste Josua Nghatanga.

Tate Nghatanga oha longo oshilonga shevangeli mOshakati, nokwa talela po Ombelewa yOmukwetu. Komapulo nkene oshilonga shopambepo tashi humu ko miilonga yawo, tate Nghatanga okwa nyengwa okufatulula uunkundi wopambepo manga ina holola uunkundi wopalutu.

"Eshunduko olye endja mo oshigwana shetu, ngele itapu ya elunduluko musho," osho a tumbula noshilala she eta ohenda.

Omutungilo gwomagumbo ngaashi ga longekidhwa kEpangelo nokwaahala iilonga moshigwana shika, oyo iinima a tala kutya, otayi endelelitha uunkundi wopambepo.

Omunashilonga Nghatanga, ina dhiladhila nando kutya, eyakulo lyawo mpeyaka osima yowala.

"Omo ye li oyendji taa gongala miigongi yawo nomomalongelokalunga. Otaa kongo omayakulo gopambepo notaa umbu oongalo dhoshilonga shongerki," osho a tumbula nepandulo enene.

Shika osha kolekwa komusita gwegongalo ndyoka mehokololo lye lyoshilonga shomusita mOshakati, Rev. Kleopas Dumeni, sho a ti:

"Melongelokalunga kehe omwa gongala aakriste 300 nenge 400, Uulalelo Uyuyapuki owa topolwa lu-7 nomwa li ootaali 120 nenge 150. Iimaliwa ya gongelwa kuyo kumwe R1188.61." Ihe oonkondo dhomilema opo dhi li, ekondjo otali pumbiwa.

Shika osha zi mehokololo lyiilonga yomumvo 1971.

Tate Nghatanga oye gumwe gwaayevangeliste yatatu taa longo moshilando oshipeshOwambo, Oshakati. Epangelongerki olya mangelulula ngashingeyi omusita Kleopas Dumeni moshimpwiyu shaagundjuka, opo a longekidhile egongalo lyomOshakati eithikameno.

## OMAPULO NOMAYAMUKULO

Josef Hengo: **Omolvashike iigandjwa yomukwanegongalo a kuthwa omapitikilo tayi taambwa?**

Omukwanegongalo kehe oku na uthemba wiigandjwa. Ngele a kondwa opo ashike a ningi omupaganilela ita talwa we.

**Omolvashike okanona komuntu a gandja epunda itaaka shashwa, ko taku tiwa aalunde otaa hupitwa molwaayuuki 10 1 Mos. 1 18: 27-33.?**

Omunona ngele okwa dhimbululwa kutya itaka putudhilwa meitaalo, nena onawa ita shashwa manga.

**Omolvashike aasitagongalo yamwe ihaa hokanitha omuntu manga inaa pewa olupati?**

Ngele ope na omusitagongalo ha ningi ngawo, okwa puka. Ando wu ye komutonateli opo a pukululwe.

**Omolvashike omusitagongalo ha thiminike omuntu a kale nomukadhi, a adha e na ela sho a li kiilonga?**

Sha tulwa kumwe kuKalunga inashi kuthwa kumwe komuntu.

**Oshiketha shaJehova oko shi li natango?**

Oshiketha shaJehova osha kana pethimbo lyuupika waBabeli, inaku tseyika osha yi peni, sigo tashi ka monika megulu ishewe. Tala Ehol. 11: 19.

**Ovanhu ava hava vake ohava fikola peni?**

Omosikola yekuthilo ngashi yakwawo.

**Oinyanga hano ohai vakwa kovapaani?**

Eeno, aapagani koomwenyo nokokukala kwawo. Oyo aatumwa lela yasatana.

**Oshike taku ti natu ethe omatameko gelongo IyaKritsus? Hebr.6: 1.**

Pamwe elundululo inali yela nawa. Otaku tiwa: Onke ano inatu kaleni petameko lyeuvitho tali popi Kristus, ndele natu ye sigo okegwano.....! Inatu kala petameko, natu koke mokutseya Kristus, tu hume komeho.

O. S. Ndevahoma: **Oshipango shotete: Ino kala nookalunga vamwe, eshi haliko mbela tali tongwa apa?**

Eliko otali tu yakula, ndele omuntu kee na okupangelwa kulyo. Oku na oku li longitha pahalo IyaKalunga.

**Mohombo omu na oluhondelo mbela?**

Aateyi yoondjokana naamboka kaa simaneka ontala yoondjokana otaa geelwa kuKalunga Hebr. 13:4.

**Ngeenge omunhu a hokolola oinima ei a vaka ye ine i shuna kumwene, ota mono ngoo ombili?**

Sho opala okushunitha iinima yaantu noku yi hempulula kumwene gwayo. Ihe oto vulu oku yi pa Kalunga mwene, ngele nani otashi nyengana. Jason Amakutuwa

## OVANAFIKOLA VANGWEDIVA VA HANDUKILWA

Ovanafikola vavali vomofikola yokombada yaNgwediva, mOwambo ova pewa ehandu lokufuta R200.00 ile eehani 12 modolongo kwa kufwa eedula nhatu. Eshi ove shi ningilwa eshi va monika vati va nyola omatumbulo omashoko okushesha Epangelo la S. A. komakuma ofikola. Oshe va dengifa yo omapokolo IO keshe umwe.

Ehandukilo eli ola dja pashitokolifo R17 shoveta ei ya ningilwa Ovawambo neudo. (Umwe wovahongwa ava, omona womufitaongalo Titus Heita, ou e li yo oshilyo shOngudu Oyandjiveta mEpangelolo Owambo.

(Suidwes-Afrikaner.)

## AATUMWA AAKULU YA GALUKA

Ongerki otayi hambelele natango Kalunga sho a egulula iiyelo yaapangi yetu mboka ya ka fudhile po oomwedhi dhimwe, sho ya galukile ishewe mpaka miilonga yawo.

Oyo mbaka; Kaarina Haldin, ota longo mOnandjokwe meme M-Liisa Tiisanen. Ta longo ngaashingeyi mEngela nameme Lahja Grönlund, ta longo koRupara, koKavango.

Omuwa mwene ota sile oshimpwiyu epya lye, tse okwa ti ashike natu galikane, ye mwene a longe moomwenyo dhaantu opo yi itule miilonga ye.

## DR. LAINE KUTANZANIA

Omundohotola Jarno Laine pamwe nomukulukadhi gwe omupangi Aila, inaa pewa eziminino sho ya li ya indilwa kongerki ya galukile miilonga yawo mpaka. Dr. Laine, oya longa nale mOnandjokwe 1961-1966.

Ongomukuluntu gwoshipangelo shaNandjokwe nomutonateli guupangelo auhe wetumo, Dr. Laine okwa li a igililwa kAawambo oyendji. Sho a ka fudha po kuSoomi okwa kala metsikilosikola hwiya opo a ninge omuvalithi gwolela, osho wo oku ya yakula aankiintu momavu galwe.

Konima yoomvula ndatu sho a indilwa a galukile mpaka miilonga kongerki, Epangelo Iya S.A. inali mu ziminina e ye kuS.A. nenge kuSuidwes. Inapu gandjwa etompelo.

Ngashingeyi kuku Laine, negumbo lye, ota kundu Aawambo nongerki yaElok, e li miilonga yoshipangelo shallembula, Tanzania. Omukulukadhi gwe wo oye omupangi gwaanona (omuspesialist).



Dr. Jarno Laine

## “Otii ka mbesitela omambo taga pumbiwa,” Katri ta ti;

“Tala, ositola oyu udha omambo ngoka Aawambo kaye na nando o-hokwe mugo, ngame itandi ka tsikila nando nomukalo nguka,” osho meme Anna-Katri Kapenda a lombwela omutoolinkundana mositola yomambo pOniipa.

Omasiku ga zi ko meme Kapenda okwa langekwa moshilonga shokuwilika Ositola yOmambo yongerki. Okudhiginina omambo giimaliwa opo u tseye shono she ya mo, naashono sha futwa mo nenge shono tashi ka likolwa komeho, shika kashi shi nando oshilonga oshipu, ihe osho shoka meme Kapenda e shi taamba nomukumo.

“Okuza mpaka otandi ka tala Aawambo otaa pumbwa omambo ga tya ngiini, nogo ngoka tandi ke ga mbesitela,” osho a ti.

Nando meme Kapenda okwa longo konyala oomvula hamano miilonga mbyoka yOsitola yOmambo, olwo lwotango Ewiliko alihe sho Iya gandjwa ngaaka miikaha yomuvalelwamo.

OIwindji meme Kapenda okwa kala ha mono omapukululo miinima yokudhiginina omambo giimaliwa ihe shika okwa tala inashi gwana natango.

“Ope na aatumwa mboka taa kwatha ndje natango moshinima shoka,” osho ye mwene a ti.

Meme Pirko Lattunen, omudhiginini gwoshiketha shiimaliwa yoshipangelo shEtumo shaNandjokwe natate Kauko Heikkinen, naye wo omukonakoni giimaliwa yiipangelo ayihe yEtumo, oyo ya tumbulwa naanaa kuye komadhina.



Anna K. Kapenda

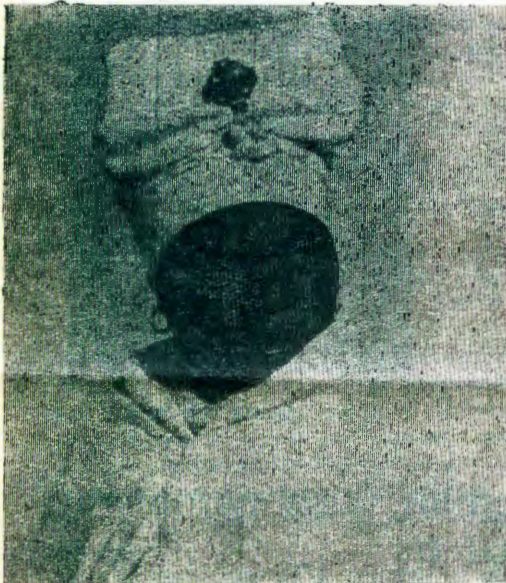
## Osheendo shovaudifi vevangeli mombuwa yaNamib

Pefimbo lefudo letu nameme Terttu Heikkinen, okudja eti-26.2 -26.3.1972 kOshiwakopo, otwa mona onghenda ei okweenda pamwe nomuyakuli moshilonga shovakriste vomehalakano mOushimba aushe, omushamane Toivanen.

Otwa hanga e na omalweendo taa pitile mombuwa yaNamib, okudja mOshiwakopo nokuyuka koumbuwanhu okupitila kOmbaye. Ediladilo ololo okutalela po eenhele edi: Tomtsas, Maltahöhe naMariental.

Mombuwa omu omwa li yo eefaalama odo otwa talela po noku va lombwela Jesus Oye Omuxupifi wovanhu aveshe vomihoko adishe nomalaka aeshe. Konyala ve tu tambula nawa pashe, kakele pofaalama imwe opo omuhona a fa a li a limbililwa. Ovanhu vaye inava udifilwa kufye.

Omuhona mwene a pulwa ngenge oye omukriste. Eshi a ti kutya ye omukriste opo okwa pewa ufo vokulesha a yandje yo kovanhu vaye.



Gumwe gwaamwameme yomongerki yomUushimba mboka yi ile okudhana oshituthi shEtumo pamwe natse kOmandongo 1970.

Otwa li twa humbata omambo omalaka aeshe Ovasuidwes navahapu ve lilandela omambo, unene Ombibeli nomatestamendi a halika. Omaimbilo yo otaa pulwa unene Ovanhu vomOushimba ova hokwa okwiimbila Kalunga.

Ovanhu ove li mombuwa yaNamib, ove li mouwike, moupyu, ohava hafe unene nge tava mono ovaudifili, ndele luhapu omhito

ei oya pumba. Ove li kokule nondjila oi li po ii.

Apeshe otwa hokolola oshilonga shetumo. Peenhele dimwe twa ulikila ufano vokomanya etumo, opo va mone olupe loshilongatumo mOngerki yaElok. MOushimba twa mona eenhele dimwe da pumbwa ovatumwa va udifile ovanhu evangeli ngashi okomboni imwe kuHardapdam, Mariental. Ovamati va djuulukwa omuyakuli, osho va tonga neenghono.

Osho yo kOshiwakopo tava teelee onhele yatate Immanuel Kamho i nangekwe diva. Paife va fa va efiwa ashike, osho tava ti.

### Ongerki yaKristus mombuwa

Mokutala eshito laKalunga mombuwa, onda longwa shihapu, nonda tala osho ngaha Ongerki yaKristus i li monhele ya fa ombuwa mu na oupyu noutalala noluhapo. Omafilu omale neemhunda odile nondjila oii, ndele Jesus ou a fya nokwa nyumuka, oye omufindani, ota endifa ovaitaveli vaye nondjila ei idjuu fiyo kefikilo lovana vaKalunga.

### Tu kaleni kumwe

Ekundo eli nde li pewa kovaitaveli ovo ve li kOushimba kOshiwakopo nOmbaye, osho yo eenhele di lili, kali fi ashike la tumwa kOvawambo, ndelenee ovakriste yo vomOvanama Ovaherero, nosho tuu.

Ova ti nandi kundile po ongerki yaElok kutya natu kaleni kumwe meitavelo limwe laJesus, opo tu dule okulonga oshilongatumo movapaani novashunimonima. MOshiwakopo ova ninga ongalo yetumo kOvayelele kuKongo R6.12. Hafeni Tobias a yandja oupalwa va pewe Ovakwanghala. Osho yo kOmbaye va ninga ongalo R6.12.

Meme Kaarina Haimbili a tuma oshipakete mu na oidjalomwa, nameme Lea Uugwanga a tuma oshipakete mu na oidjalomwa. Ovukulukadi ava ovongudu tai longele oshilongatumo.

Vahapu va tuma omakundo eendjovo daKalunga mu na omanenediladilo aa; "Tu kaleni kumwe mokulongela Omwene." Natu kaleni yo kumwe melongelokumwe lefiku keshe. Oukumwe oo eenghono.

MOushimba omu na ovakriste onunona novakulunhu va hala okuada oshilongatumo nova hala okulonga pamwe nafye, tave tu ilikanene nde tava yandje sha molwashi.

Paulus Andreas



Pomathimbo gevluluko, aalumentu aanii-longa oyendji osho haa vululukilwa ngaa-ka mokukonakona oohapu dhaKalunga.



Meme Hileni lingula, ngoka ta longo kepyatumo kOnankali osho aluhe a nyanyukwa ngaaka nosha kwatha Aayelee.

### Enyanyu lya pendutha eipulo edhigu

Kuume kandje okwa zi kOnankali, omukunda gwAayelee oomaila 30 lwaampoka okuza kOniipa nge wa landula oshitauwa shoteya shono sha ya kUushimba. Muule wominute 30 oto thiki ko nuupu ngele ou li moshihauto.

Meme gwandje okwe ya po, a fa ina vulwa nando okweende ondjila onde nokuli. Okwa nyanyukwa nyanyu lye okwa hala li kale wo lyomutalelwapo gwe.

"Nani, owa etele ndje enyanyu kahewa kandje? Opo ndil li, Aanankali oye li tuu nawa?"

"Aawe meme, otaa si ondjala notaa hepa noonkondo. Ino uva sha nani? Inatu lokwa nawa, iilya itayi koko nando. Aanankali kaye na sha shokulya."

"O, ethimbo ele natango li li ko eteyo li thike. Otashi tu kumitha. Otatu ya kwatha ngiini? Itashi kwatha sha nando tu ya pe iilya nenge limaliwa nenge oonguwo nenge oohapu dhaKalunga, ngele Aanankali yo yene itaa vulu okwiitedhulula nokupenduka moomposi dhawo."

"Olye te ya pendutha? Aanankali otaa pumbwa shike komeho giinima ayihe? Otashi zi komuntu nenge okoomwenyo dhawo nenge okuKalunga nge ta gumu oomwenyo dhawo?"

"Enyanyu lyandje olya kana po. Aaleshi aaholike! Otatu pumbwa okuninga sha omo-woohepele, unene Aayelee kOnankali.

Helka Honkanen

### Ombila onkulu yi itsuwa

MuRooma ombila onkulunkulu yomupapa Calistus 1, omuyapuki, oyi itsuwa kaafulimevi moshilando shomupapa Vatikan.

Omupapa Calistus, Omurooma, otaku tiwa okwa lela ongerki 217 sigo 222, nokwa sile eso lyomuhokololambinzi sho kwa gwithilwa emanya edhigu. Manga ina longa oshilonga shomupapa, otaku tiwa Calistus omuyapuki okwa kala omutonateli gwomaendo gaakriste yotango muRooma (Katakombe) oombila ndhoka dha simana muRooma pahistoli lyongerki nohadhi talelwa po koyendji sigo onena.

Southern Cross

## Ovashingi voihauto va pandula oshoongalele shavo

Ongudu inene yovashingi voyeendifo yongerki yaElok, mOwambo aische, ova ningilwa oshoongalele shavo ohani ya dja ko. Ovashingi konyala 30 okwa li va ongalela moshooongalele eshi.

Epashukilo loyeendifo aische yomongerki, ola mona omhumbwe ya tya ngaha okuni nga eetundi tadi fatulula oshilalakanenwa shomushingi. Meetundi edi ovashingi va u. likilwa yo eyakulo netungo longerki tali ningwa kovayakuli vahapu omu ngashi omunashipundi wEpashukilongudu loyeendifo, Rev. Matias Nghipandulua a tonga ta ti:

"Ngenge ou li mosheendifo shoye to shingwi shi itavela kutya, ou li moshihauto shoye mwene, osheshi omboloto ho li omo hai di omo."

Eshi okwe shi tya unene mekwatafano nefatululo lediinino lemona noloilonga komuyakuli keshe mongerki.

Kakele komapukululo mahapu a ningwa pefimbo leetundi, ovayakulingerki ava okwa li va mona omhito iwa okuholola omaudjuu avo omoilonga. Efimbo nande kwa li lixupi okuyandja omanyamukulo komapulo aeshe, vahapu va mona ouhakumwenyo nova pewa eteelelo liwa omolvomhito ya tya ngaho eshi tai ka longekindwa natango komesho.

Oshoongalele eshi shefiku limwe netata, osha ningilwa mOniipa.

### Ohandelesi ya lunduluka

Oshinyanyangidho shEhanganotumo lyaSoomi sho sha ya ngashingeyi miikaha yongerki, ohandelesi yasho oya lunduluka wo notayi kala ngashi tashi monika mpaka pevi:

Oshinyanyangidho shOngerki yOwambokavango, Oniipa, P/sak 2013, Ondangwa. Ohandeleli ndjika oyo wo tayi kala yOmukwetu. Ngoka to nyolele kOmukwetu nyola ano ngaaka P/sak 2013, Ondangwa.

### EDINA KALISHI VALI WELWITCHIA

Edina loshilongo shOvadamara, Welwitchia, paife otali ka lunduluka li kale hali ifanwa Khorixas. Eshi osha shiivifwa kombelewa yomashiivifo mOvenduka. Edina eli olo tali kala edina loshilando shepangelo.

Welwitchia okwa li la lukilwa oshimeno shimwe shomombuwa hashi dudu okukala eedula 2,000. Kharixas inali shiivika natango kutya otali ti shike.

Ovadamara otava longikidilwa navo yo va ka pewe elipangelo pamulandu wEpangelo la S.A. omudo tau uya.

### Ino mona uundoongi wandje

Pamwe pe na ngoka wa mona uundoongi utano owa kana. Ou li ngeyi:

1. Onzinzi yuutokele wedhiya, ya hakwa kothingo nondanda' M.
2. Onzinzi ontokele, yuutokele wembundu.
3. Ondema onduudhe yuuluudhe uumela.
4. Ondema onshona onduudhe.
5. Ondumentu ontokele.

Oundoongi ndhika odhaFilippus Daniel, Okahenge, Oshigambo. Odha kana muNovomba 1971.

## Euvathano lyiilonga nali talwe nkene tali longithwa

"Osha pumbiwa omahala agehegehe giilonga muSuidwes alihe ga talelwe po kii-lyo yEpangelo lyOwambo nokokomitiye yondhalate, lyo Epangelo li tale wo omadhiladhilo ngoka taga inyenge moshigwana gokudhika Ehanganano lyaaniilonga," osho sha indilwa komusamane Johannes J. Nangutuuala kEpangelo lyOwambo.

Manga omutumba gwEpangelo lyOwambo inaagu zimbuka mo natango mOngwediva nuumvo, omunashipundi gwokomitiye yondhalate Nangutuuala, okwa nyolele Epangelo lyOwambo ombilive tayi indile omukalo gweuvathano epe lyiilonga gu talululwe.

Mobilive yiitsa 7, omusamane Nangutu okwa tumbula uundjambi uushona tau futwa natango aaniilonga, uuteku waaniilonga nkene itau nyanyudha natango, oluhepo lwoombelewa dhiilonga komahala nomahala no-sho tuu.

"linima mbika nayi talwe nawa opo omaupyakadhi ngoka taga yemateke oshigwana sheni ga kandulwe po," osho a nyola.

Omusamane Nangutu okwa dhiladhila kutya omaudhigu ngoka otaga manwa po ashike ngele otaku ningwa ekonakono lyokonakona onkalelo yaaniilonga pomahala gi li nogi ili mpoka iilyo yEpangelo lyOwambo kumwe nokomitiye yondhalate taa ningi oonkundathana naagandji yiilonga pomahala nomahala nokuninga omauvathano golela.

Osho wo egameno lyaniilonga ndyoka kali po sigo onena, omusimanekwa Nangutu ota indile Epangelo li kwate omadhiladhilo ngoka ga penduka moshigwana kutya ku kale Ehanganano lyaaniilonga ndyoka tali gamene

omutaambi kehe gwiilonga, ngashi aagandji yiilonga ye na lyawo.

Johannes Nangutuuala okwa li a hogololwa a ninge omunashipundi shokomitiye yondhalate ngashi ya hogololelwe moshigwana pethimbo ndyoka aalumentu ayehe ye ethele iilonga pehulilo lyomumvo gwa zi ko.



Omusamane Johannes Nangutuuala

### SHIIMBA OMUPAPA TA KA SHIKULA KO OMUFULANISHA

Ope na omafaneko manene paife mongerki onghwakatoolika muRoma kutya, ou ta ka shikula omupapa Paul VI, moshilonga eshi, Omufulanisha. Eshioha hololwa moshifo "The Plain truth."

Moshifo osho Omufulanisha Jean Cardinal Villot, hamushanga woshilando shomupapa Vatikan, oye umwe a fanekelwa oshilonga eshi. Ope na yo vavali omadina avo inaa tumbulwa, kutya pamwe tava ka kwatwa koshihoololifo.

Ongerki onghwakatoolika oya ninga efaneke li li ngaha kutya, omupapa Paul VI, ota dudu okweefa po oshilonga shaye noku ka lya omungome waye wetulumuko shimha tuu ye mwene e shi hala noina pula ehalo lomunhu.

Otaku tiwa natango kutya, omupapa Paul VI, ota ka shakenifa eedula 75, muSeptemba neudo. Omido edi otadi popile yo e-lekelo laye lokudja moshilonga ngenge okwe shi hala.

### Aawambo inaa hala Namibia -- Ndjoba

Waldheim otwe mu ulukila iinima ayihe, omalovu getu okwa nwa, omagumbo getu okwa talelapo, ehumokomeho lyomOwambo okwe li mona. Ano oshigwana shOwambo kashi shi edhina Namibia, osho sha tiwa komusitagongalo Kornelius Ndjoba muKaapstad.

Omusimanekwa Ndjoba pethimbo lyetalelopo lyiilyo yongundu Ompitithimpango yEpangelo lyOwambo ku S.A. omusitagongalo Ndjoba okwa lombwele aatoolinkundana kutya:

Ye okwa tempelwa kutya, uukumwe nelongelokumwe pokati kEpangelo lya S.A. noWambo, olya kola li vule shito, euvathano epe lyaaniilonga, otali ende nawa, yo iinima ayihe mOwambo otayi ende nombili.

Kombinga yedhina Namibia, omusimanekwa Ndjoba okwa ti kutya, Aawambo oya tseyashike ombuga Namib, kaayi na aantu muSuidwes. Namibia edhina ndyoka hali tumbulwa ashike kaakwiilongo.

Aawambo kaye shi edhina ndyoka, yo inaye li hala, osho wo inaa hala omafaneko ngoka kutya ando iigwana ayihe yaSuidwes yi kale koki yEpangelo limwe alike, osho omusamane Ndjoba a popya peha lyomukwaniilwa Filemon Elifas.

Sho a pulwa ngele iinima mbika oye yi lombwela wo tuu Waldheim, amushanga omunene gwaV.V.O, omusita Ndjoba okwa ti yo amushanga oye mu ulukila iinima ayihe nokwa tseyashigwangeyi kutya Owambo otayi humu nawa komeho.

(Die Suidwester 3.5.72)

# EYAKULO LYOYE OLI LI MPAKA

Ou shi tuu eyakulo lyoye mpoka to li a-dha? Nomashina omakumithi moshinyanyangidho shongerki, Oniipa, oto ki ipanda. Ando tu tye owa hala okuhiya ohango yoye, mpaka ope na efaneko ndika to tala mpaka, nenge omutungilo ngaashi wa hala.

Shika oto vulu oku shi ningilwa uuna to hiya eshasho lyomumwoye, evalo lyoye nenge lyomumwoye. Oto shi ningilwa wo ngele wa hala uukalata womalandithilo, nenge wa hala dhoombapila ku na edhina lyoye nenge lyongeshefa yoye.

Moshinyanyangidho shika oto yakulwa shi vule po mpoka. Ngiika ou na omambo omakulu ga za omapeko, ngele to li opalekitha mpaka oto ka dhiladhila kutya owa tuminwa lilwe epe, ihe olyo ngaa ndyoka wa li u li puku li ekelahi. Eimbilo Ombimbeli nenge omambo galwe ino ekelahi we manga pe na eyakulo ewanawa lyoye.

Ayihe oto yi ningilwa paindilo lyoye mwene, ngaashi wa hala shi kale, kondando yi li pevi lelalela.

Ninga ano eindilo pambapila nenge ombapila oyi vulike komuntu lwaali. Oyendji oyi iyakulitha nale mpaka.

## Omaindilo ovatumwa a anywa

Ovatumwa vetu vakulu inava itavelelwa vali okwaalukila moshilonga shavo eshi va ka fudile po kuSoomi.

Ovatumwa vavali, J.Paussu nahefola laye Irma, nomuhakuli T. Nykänen, ova endwa panghedi ei, eshi Epangelo koKavango inali yandja efatululo kutya omolwashike vehe na vali okwaaluka.

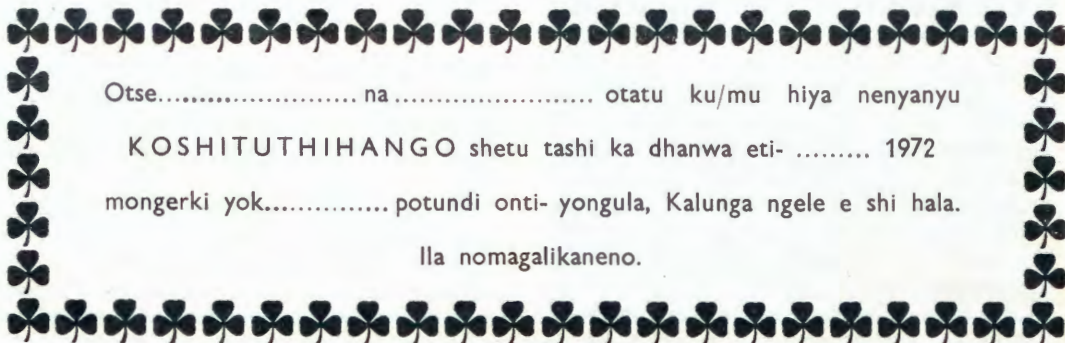
Omutumwa Paussu, okwa longa mokati kOvayelele koMpungu 1965-69. Na Nykänen okwa kalele ko 1965-70.

### Ovatumwa vape

Omuhongi I.Mäkinen nahefola laye Tuula, omudiinini wemona, eindilo lavo ve uye va longe ngeno koRupara, Kavango, neudo, inali tambulwa. Osho yo omudiakoni T. Remes nahefola laye Pirjo naye omudiakoni, eindilo lavo inali tambulwa. Ovo yo okwa li ve na oku ka tameka oshilonga shavo koKavango.



Ovalumenhu novakianhu vahapu ove shi itavela kutya meliko lavo omu na ainima yaKalunga oyo a hala okutukulila vmwe, onghe luhapu ohave i yandje mo vehe na outende. Omwene na koleke omhepo ei movaitaveli vaye ye e va punike efiku keshe mwaaishe tave i pumwa.



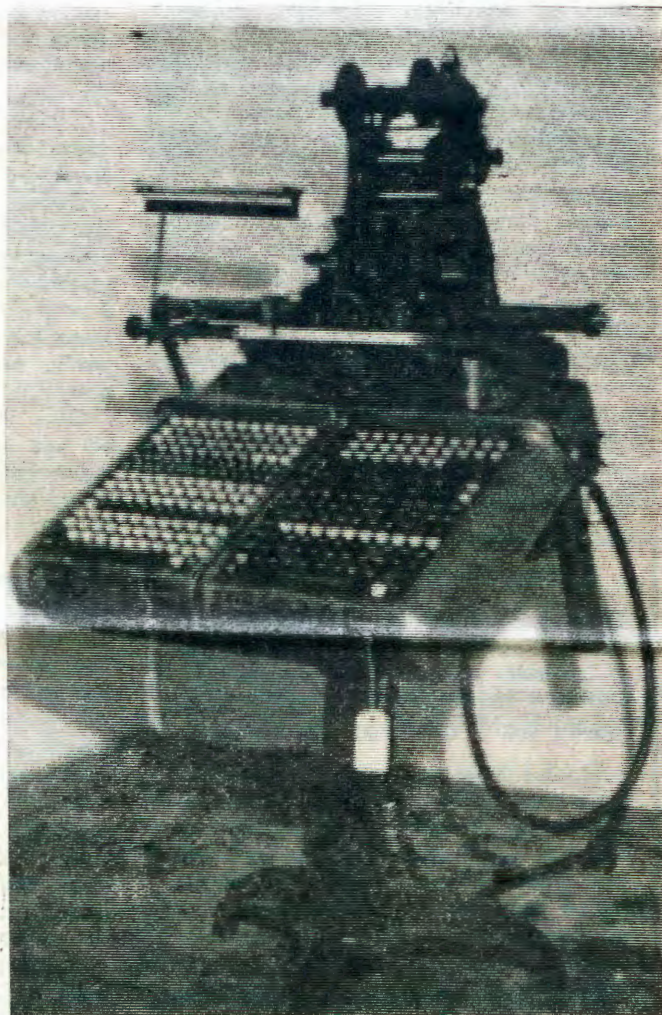
Otse..... na..... otatu ku/mu hiya nenyanyu

KOSHITUTHIHANGO shetu tashi ka dhanwa eti- ..... 1972

mongerki yok..... potundi onti- yongula, Kalunga ngele e shi hala.

Ila nomagalikaneno.

Neshina ndika **Monotype**, oto vulu okunyanyangidhilwa oshinima shoye kehe, ihe omoompadhii oontalala. Olyo hali topatopa ombapila ndjoka hayi ka hogololwa keshina enene. Yelekela ano u tu tumine shono wa hala tu ku nyanyangidhile, oto ki ipanda.



## OU OTA LONGO NGAASHI XE

Omumati Gottlieb N.Shovaleka, okwe tu tumina ohamushuxu ya faafana ilaula fokofoko, nohema itoka neenghaku eeshapato. Oinima ei okwe i yandja i pewe vati umwe waavo tava longo metumo.

Gottlieb ou okwa dalwa kelenga linene mOukwanyama, eli kwa li li na onghedi ya tya ngaha, okuyandja ohove yombelega moshipangelo kovanaudu. Nomoshivilo shaMisioni, elenga eli ohali yandja ombelela.

Ombibeli tai ti, "Okaana ohaka ningi eshi ke wete kuxe. "Gottlieb wetu, oku li meemhadi daxe Nehemia okuyandjela oilongatamo. Tate Gottlieb oha longo mombelewa muTsumeb. Omwene na yambeke eliko loye, omwenyo woye noilonga yoye.

Malakia Hauuanga

### OMUKWETU

Oshifo shOngerki onkwaevangeli paLuther yomOwambokavango  
Die Nuusblad van die Evangeliese Lutherse Owambokavangokerk  
Ohashi nyanyangidhwa mOniipa,  
Omukuluntu gwoshifo/Hoofredakteur omumbisofi Dr. Leonard Auula,  
Amushanga/redakteur Rev. Sebulon Ekanjjo  
Ondando yoshifo komumvo muSuidwes-Afrika R1.00, kombanda yomafuta R2.00  
Oondando nomambesitelo naga tumwe kOmukwetu, Oniipa, P/B 2015, Ondangwa, S.W.A.

|  |   |              |       |
|--|---|--------------|-------|
| Omatseyitho gomuntu mwene pashinyolwa shuule woondeimi | 1 | otashi futwa | R1.00 |
| oondeimi   | 2 | otadhi futwa | R1.90 |
| oondeimi   | 3 | otadhi futwa | R2.70 |
| oondeimi   | 4 | otadhi futwa | R3.40 |
| oondeimi   | 5 | otadhi futwa | R5.00 |

Oto vulu okutuma wo efano lyaashono wa hala shi tseyithwe

Owambokavango Church Press  
P/B 2013 Ondangwa, S. W.A.