

OMUKWETU

Registered at the General Post Office as a Newspaper



Ondilo yomuntu, oshikundathanwa shonuumvo

Omumvo gwonuumvo ogwa li gwaya ngiini kungoye? Uwehame neso, omatamanekathano nomapathano guusama, oyo oya kala ya fa oshikwiila shesiku kehe shaakalimo yaSuidwes. Ihe kombanda yaayihe ondilo yomuntu oya kala ompumbwe yakehe gumwe nonkalo ya nika eshunduko oya konekiwa monkalathano yoyendji shi vule shito.

Osha kala oshiwana okupulakana omahokololo ogendji numvo sho kwa kala ekonkolo komiyelo dhaakuluntu, okweegululilwa muuyuni taugamene ondilo yomuntu. Omiyelo nando inadhi egululwa manga, itashi tyololokitha omwiitaali, oshoka mpoka pe na eitaalo, oyo pe na wo elikolo.

Ngashingeyi otwa kankamena oshituthi sha simana, Okrismesa konima yomasiku omashona. Oshituthi shika osho evalululo lyondilo yomuntu kehe kombanda yevi nenge evalululo lyuuthemba womuntu ngele wa hala ndi tumbule ngeyi.

Euvitho lyevangeli mongerki lyaElok, nosho wo moongerki odhindji, muSuidwes numvo olya ulike naanaa koshituthi shika nonando inashi tumbulwa kedhina. Oshoka omoshituthi shika mwa zi ngoka a ti: "Ongame nde ya oyo ya kale ye na omwenyo noya kale ya gwanenena." Joh. 10:10.-

Ongerki oya kala yi na euvitho lya nika ongunya, ngele inayi ulika oluhepo lwaamboka kaaye na egwano, omolwawo yene nenge omolwooyakwa wo. Ongerki inayi sa ohoni sho tayi pewa uusama kutya okupopila kwayo omuntu kolutu kashi shi eithano lyaoyo.

"Kape na nando okakololo kokukalamwenyo kwetu mpoka tatu vulu okutumbula kutya, mushika evangeli kali na sha nasho," osho oshifo shoongerki oonkwaLuther dhaavalelwamo muSuidwes sha ti.

Okrismesa Kalunga okwe yi tu tulile pehala ewanawa lye tu opalela, pokati kehulitho noketameko lyoumumvo. Musho otatu yamukulwa omaipulo ogendji ge tu kala poomwenyo omumvo tatu gu laleke, notatu yamukulwa wo komapulo omolwomumvo twe gu taalela katu shiwo, shoka tagu tu etele.

Moshituthi shika ongaana yaKalunga, katu na ashike ompito yokwiipula naashono twe shi yugwa kuyalwe, ihe otu na wo ompito yokudhiladhila mboka twe ya yugu shono ya li ye na okukala ye shi na pahalo lyaKalunga. Jesus a hala atuhe tu kale, megwaneno lyuuntu auhe, palutu nopambepo, mOkrismesa nOmomumvo Omupe twe gu taaleleni.

ONGERKI NOSHI-MPWIYU SHOPASOSIALE

Ongerki kayi na oshilonga sha yooloka shi ikalekelwa oshoka nomonkalathano ongerki oya talwa oyo tayi longo mo. Osho sha vulika nga manga ukriste wa li oonkondo dhomeni. Ihe okwa li iiningwanima iyali mbyoka ya yonagula po oonkondo ndhika. Enatuko lyonkalathano muukriste nomoofabulika.

Ilinima mbika oya lunduluka omatungilo gonkalathano nopokati kayo nongerki opwa tende omusa. Ongerki oya ningi miilongo yimwe ewi lyeuvitho. Onkalathano kombinga yayo oya tameke okwiitunga paufilosofi.

Megongalo ekwakriste omwa humbatwa aluhe oshimpwiyu shaakwanegongalo. Ihe monkalalelo oompe dhethete eti-19, oshimpwiyu shopakriste muusosiale osha nenepala. Oshimpwiyu shino oshe ya unene momadhiladhilo gaantu yamwe ngashi Fliedner Löhle, osho wo Wichern.

Moshilongo shawo omwa zi etumo lymeni yongerki mokati kAandowishi. Oshilonga shika osha taandele moongerki odhindji oonkwaLuther. MuAmerika, oshimpwiyu shopakriste muusosiale omo sha li wo sha falwa mo kaatembukili mo, mboka ye shi thigululitha nosha dhigininwa shi na omwenyo gwomagongalo. MuAmerika omagongalo omashona, aantu oye shaathane nota ya humbatelathana oshimpwiyu.

Europa olyo oshihapulukilongo. Ngashingeyi otashi longo iilonga oyindji mbyoka ya nyenga ongerki sigo aluhe. Otashi sile oshimpwiyu olutu lwomuntu okuza kevalo lye.

Miiniima oyindji ongerki oya gwana okupandula sho epangelo lya tula ukriste medheulo, ihe pomahala gamwe, pokati kongerki nepangelo opwa holoka ehilathano, oshoka omakankamenodhiladhilo gokutota ooveta dhopasosiale otadhi kondjitha ukriste. Nenge epangelo otali ipulile oonkondovulikitho dha fa dhuukriste.

Kashi shi oshilonga shongerki okukala nando esiku limwe oonkondo dhopolitika. Ihe epangelo kombinga yalyo oli na okusila oshimpwiyu ongerki yi kale yi na oompito okuuvitha nokulonga memanguluko.

Ongerki oya gwana okuyambidhidha epangelo, sho tali kondjo li wape okupa aakwa shilongo ekankamenogameno nomokusila oshimpwiyu omuntu nondilo ye. Ihe ongerki oya gwana okudhimbulukwa yo yene noku dhimbulukitha wo onkalathano kutya opu na elalakaneno limwe alike ndyoka li vule agehe, oyo "Eyo lyoshilongo shaKalunga." Mpo ka ope na oshiyelekitho tashi tokola kutya ongerki otayi vulu okuya sigo openi moku yambidhidha epangelo.

Ongerki oyi na oshilonga shopauprofeti okulondodha epangelo ngele tali itula pehala lyaKalunga, nenge ngele tali langele ukwaagumwa womuntu. Ongerki oyi na okukala yi na ewi lya yela momanenepulo gopethimbo lyetu, ngashi ombili, iita, eitaalo, eitaalelo nosho tuu.

Oongerki dhetu otadhi vulu ngiini okukwathela iitya yadho meithanenotseyo nomoshimpwiyu shopasosiale, meithanenwalonga yayo yomasiku agehe nokuuva ko iinaku-gwanithwa yoshigwana.?

Ongerki otayi yambidhidha ngiini aanashilonga yopasosiale miilonga yawo mbyoka olwindji yi li po iidhigu niikukutu nokutsa aagundjuka omukumo oku ya miilonga ya tya ngeyi?

Oongerki otadhi vulu ngiini okukala tadhi

longo sha mokutameka ooveta dhopasosiale? Oshinakugwanithwa shongerki kashi shi andola okukala mekwatathano naakuluntu yoshilongo noku ya yambidhidha oyo ya longe pakankameno lyopakriste? Medhiladhino ndino, ekwatathano pokati kepangelo noongerki otali pumbwa unene.

Ongerki oyo yi kale ongerki yashili oyi na okulonga paudiakoni, okuhempulula ohole yaKristus niilonga wo. Ihe hasho ashike tashi gwana. Otaku pumbwa epapudhuko, oyo tu mone oshimpwiyu shetu shopasosiale pamukalo omupe.

Epapudhuko oli na okuziilila momagongalo getu, pamwe oyo li fale omalandulathano omape noli na okumonika momakwatathano getu noongerki oompe niilonga yi na omalunduluko taga endebele gopasosiale.

Euvitho lyoohapu dhaKalunga negongalo li na omwenyo kudho, oyo ayike oothithiya dhashili. Kalunga ota vulu okukoleka ongerki yetu nohugunina omauntu agehe ga tonate, oyo mukwetu a kale ta silwa wo oshimpwiyu.

Omudiakoni,
Abisai liuhwa

Onda hala okuuya moshilongatumo, ope na tuu onhele?

Epulo eli ola ningwa epulo lefiku keshe mokati kovakriste vongerki yaKristus, osheshi eemwenyo davo da xwama okulongela Omwene wavo manga omutenya. Ndele mounyuni omu na oikeleli ihapu, omolwayo ovapuli inava pewa enyamukulo pefimbo lomwenyo wa xwama. Naluhapu kwa tiwa, teelega manga. Nande kwa tiwa ngaha, osha fa ashike okuta omumbala peumbo itape uya, sha shomupondo fiyo omupuli a dima filu.

Luhapu onda nyamukula omapulo aa kutya onhele okulongela Kalunga oyo i li apeshe nomomaongalo oshilongatumo oshapumbwa okulongwa, ngaashi nokuli otu na okutya nenge momaongalo ongerki yetu itamu longwa oshilongatumo, okuya kovapaani oku na oudjuu, osheshi omaongalo oo e na oshisho okuhumbata omutumwa keshe ta longo movapaani. Shaashi ope ya oshikeleli shi nene osho oimaliwa. Oimaliwa itai monika, nawa nenge ku na ongudu oyo ye ku tuma, otai nyanganyangwa penya naapenya; ove u hange taku ti, oimaliwa ya pwa po fuda manga taku talwa, ndele onghee kwa talwa.

Tala kep. 6



Oshinyanyangidho otashi hulitha iilonga yasho eti-10.12 notashi ka patuluka ishewe eti-10.1.1972. Ositola yOmambo otayi longo ngashi shito.

OHAPU YAALUHE TAYI ZALA ONYAMA

Joh. 1:1.

Mpaka tapu holoka nkene Kalunga e ya komuntu ngoka a yonuka nayi kuulunde. Ihe Kalunga ngoka ine ya mesimano lye lyuukalunga ndyoka a kala nalyo megulu aawe. Okwe ya molupe lwombiliha, molupe lweyunuko opo a wape okulikola shoka e shi hala, onke otatu adha Jesus ta valelwa moshi gunda shiimuna eha inaali simana. Ota valwa wo kokakadhona inaa ka simana, ota valelwa mokalando inaaka simana.

Omolvashike Jesus inaa valelwa motempe-li? Omolvashike inaa valelwa muJerusalem Oshike shi imbi Jesus a londe kokakambe sho a londo kokandoongi? Omolvashike Jesus inaa valelwa muuwa waDavid?

Ayihe mbika oya ningwa tse nangoye tu kale aaifupipiki, owa kongwa molupe lwombiliha. Ohapu yaaluhe ya zala onyama Omuye mwa li mu na omwenyo, nomwenyo ogwa li uyelele, waantu. ov.4.

Omuntu ye mwene ina hala okweenda pamuthika ngoka gwe, oshoka oku wete oye omunene, omuyamba nomuzeko. Ina hala okukala muulando uushona wooTavi, ihe okwa hala okukala mooVenduka, miilando ya simana. Ina hala okukala muugongalo uushona, wooHeke, ihe okwa hala momagongalo omene gooNiipa nooKahao.

Epulo ndika kutya omolvashike Kalunga kaaluhe ta zala onyama, itali kwata nando omuntu a dhiladhile oshinima shoka kutya osha ningwa omolwoye. Shika Kalunga okweshi ningi oku ku ulukila ondjila u na okweenda nayo.

Jesus ta ti: "Ngoka itaa taamba oshilongo, shaKalunga ngashi okanona oye ita yi mo, musho." Ngoka ti inenepeke, ota shonopekwa. Aasita yomagongalo naayevangeliste otaa dhini ngashingeyi ondjila yeifupipiko Aamati ne yaKalunga inamu sa oshiteni shehumokomeho, Ohapu yaaluhe oya zala onyama Inamu lela omagongalo ongaaleli yoshilongo nongooyene yomikunda.

Tu galikaneni Kalunga e tu hupithe moondjo dhookwaayakulathana mokati ketu molwashoka aniwa otwa tila omikithi. Tu hupi-



thwe moondjo dhokudhina aakuluntu yetu, moshigwana. Kehe gumwe na tale shoka ena oku shi ninga opo a kale omwiifupipiki, gwashili.

Melongelokalunga aluhe pehulilo otatu igidhila: "lifupipikeni koshipala shaKalunga, mu taambe eyambeko kuye." Ndyoka olyo ehala lyaKalunga komuntu kehe a kale omwiifupipiki opo e mu yambeko. Epulo olyo ndi: Owa hala tuu u kale omwiifupipiki nenge omutuwalali? Owa pewa ehogololo ngoye mwene, ihe ndhindhilika: Ohapu yaaluhe oya zala onyama omolwoye u hupithwe.

Israel Neumbo

MOSHIKUNGULU PAMWE NAJESUS

Muuyuni muka omu na omaudhigu ogendji, omahongololo gopendji noga hala tu ningine mo nontage tu etele nokuli omalimbililo. Pamwe otatu iyekelele ashike sho tatu dhimbulula kutya nani tse itatu vulu sha.

Ihe nando ongeyi, otu na Omuhupithi Jesus ngoka a li a lotitha efuta moka mwa li aalongwa ye. Nando oshikungulu osha li sha गया, Omuwa okwa ganda efuta nolya loto. Oshikumitha otatu shi mono mpoka sho Petrus a dhimbulula Jesus te ende kombanda yomeya okwa igidha manga e li mowato:

"Omuwa, ngele ongoye, lombwela ndje ndi ye kungoye tandi ende kombanda yomeya, okwa haluka nokwa tameke okuningina mo. Keigidho lye, Jesus okwa yelutha oshikaha she nokwe mu kwata ete mu hupitha. Mat. 14: 22-32.

Ngele tatu adhika kuudhigu, tu ithane Jesus note tu kwatha. Ihe mokwiindila, inatu dhimbwa wo okuhambelela. Johanna Elago

UUGUNDJUKA WA SIMANA

Omusimanekwa tate Abraham Itope omuvalwa awike pOniipa, name Mahanaem (Mbumba,) Itope, oya dhana oshituthihango shawo eti-13.12.70. Oya sindi oombepo dhuuyuni mbuka. Edhina lyoshituthi olya li. "ONDILO."

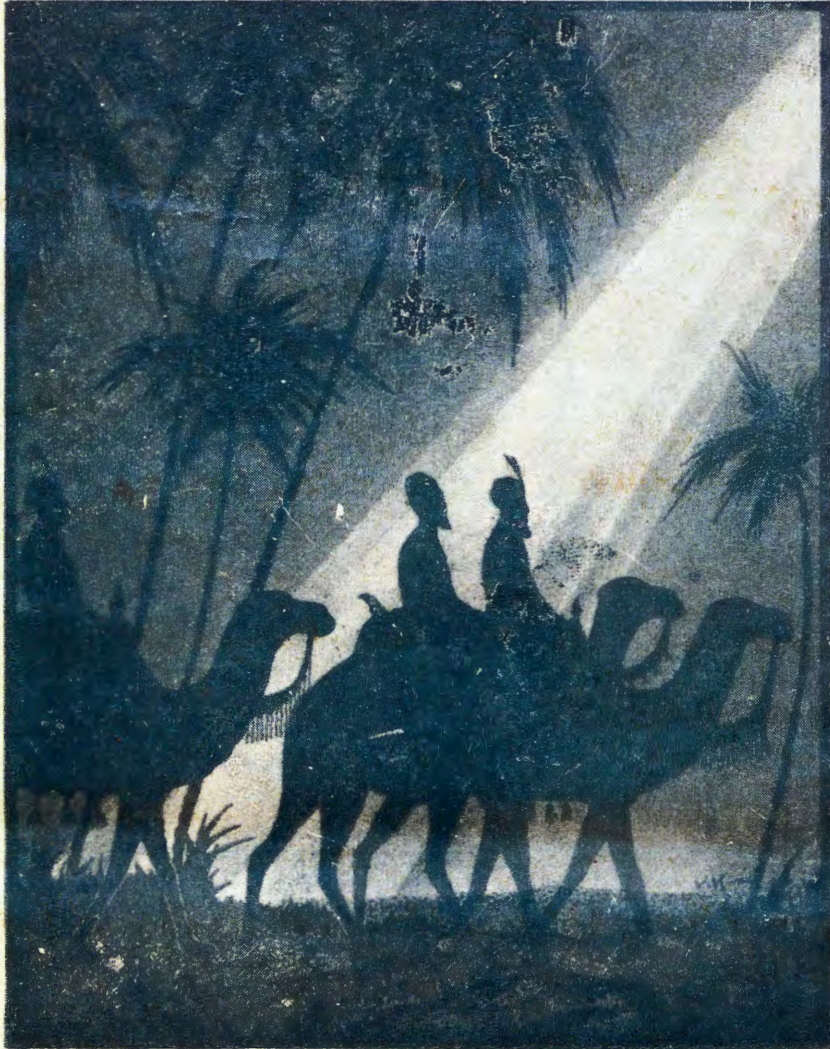
Moshituthi shika oya li ya longitha iimaliwa R612.96. Tala nkene uugundjuka u na ondilo. Aagundjuka ooyakwetu, otatu endeni tu nondjila ya yela? Eps. 119:105.



Ovanongo vokoushilo, ongano yongaho

Omuyevangeli Mateus ote tu hokololele ovanongonhu vamwe va dja koushilo nde tave uya kuJerusalem. Kehepu eli okwa dja omahokololo mahapu makulu taa hepaulula ovanongonhu ve uya okufimaneka okaana Kristus nefimaneko linene.

kuPeggi Gollins



Ovanongonhu okwa li ongudu yovapilisteri vonale moilongo yokoushilo wOpokati. Ovalumenhu ovafimani, va hongeka ovo, va kala nokukonakona eenyofi nde osho va hokolola kudo sha itavelwa unene.

Osha hangika sha xunganekwa nale kutya edalo lohamba oyo ya teelwa efimbo lile otali ka monika tete monyofi tai vema; novanongononi va tya ngaha veenyofi ova kala hava konakona onyofi oyo oule wedula doma-fele ngenge tai holoka.

Ehepu limwe otali ti kutya, eshi tuu onyofi yaBetlehem ya holoka keulu ovanongonhu ova tumwa divadiva mondjila va ye kokalando kovatumwa vokeulu; Gabriel, Rafael na Mikael.

Kaku na ou a shiiva fela kutya, ovalumenhu ava dile peni, ashike eshi ve uya, muJerusalem fimbo inava twikila va ye kuBetlehem, ova fa va dja koumbanganhu ile koushilombanganhu. Pamwe ova dile kuPersia, Mesopotamia ile kuBabilon.

KuJerusalem epulo lavo ola etela ohamba Herodes omalipulo manene nokwe va pulafiku tava ka shuna, opo ve mu lombwele okaana, ohamba yOvayuuda kutya oi li peni. Kelondwelo vaha shune kuye, ova tauluka ashike omulonga Jordan va pitile pokati kaJeriko naJerusalem.

Omuyevangeli Mateus ina tumbula omuvalu eshi a popya ovanongo ava, ndelenee o-



mahepu makulu okounginino waEuropa, luhapu okwa tya ova li vahapu fimbo kombi-nga yokoushilo haku tiwa kutya okwa li velli 12. Otashi dulika omivalu nhatu wa kufwa ashike komaano oo va yandja kokaana; oshingoli, oshidimba shiwa nombidi.

Ovanhu ava ovo yo ova shiivika ongeehamba nhatu, noluhapu ova fanekwa tava fimaneke. Eshi Mateus ine shi hokolola nande. Pamwe edalo lomuxupifi otali wanifa omishangwa dikulu ngashi ovanhu tava dimbulukifwa ovelise yomEpisalmi kutya:

“Eehamba dokuTarsis nodokeenhunhu otaadi ke mu fimaneka, eehamba dokuSeba otaadi ka yandja omaano.”

Ovanongo ava kounginino ova hokololwa nomadina avo; Melkior, Gaspar, naBaltasar. Ohaku ti edina lotete olomukulunhu waaveshe, weendjedi dile neexwiki dile, Gaspar omunyasha ke na eendjedi naBaltasar woshipa shilaula ngashi Ovamore neexwiki, dile dilaula.

Pautatu wavo ohaku ti nee ove lile polongongo inene younyuni itatu ya shiivika pefimbo linya: Afrika, Europa, naAsia. Edidiliko laKristus eshi ta ifana aveshe kuye.

Natango omaano avo otaa yandja efano laKristus. Oshingoli otashi yandja ouhamba kuKristus, oshidimba edidiliko lohohole nombidi ya longifwa luhapu omaano kwaau ta dulu kuxupifa ovanhu.



Omukulunhuongalo a xulifa

Ovalongimina nye muTsumeb, ohandi mu shiivifile elaka loluhodi kutya, omukulunhuongalo tate Stefanus Haihambo Kandjabanga, Edundja, ou a kala omulongindjovo mokati keni, a xulifa po oweenda waye. Okwa fiya po omufyekadi nounona vavali.

Ovamati vahapu ova yakulwa pamhepo mongerki yaTsumeb kutate Stefanus pamwe novayakuliongalo vakwao. Omwene a longifa epanda, omupiya waye pee. Ongerki yetu oya hapupalekwa oilyo yayo keyakulo lovamati vetu mehalakano ngashi sha li sha ningwa nale kOkawe kaMbaye, Opumuna, Etayi laNalweendo, Omatete, nosho tuu.

Omuxunganeki umwe a tile: “Vanyembo vakwetu, Oukwaamhundja nOnambabi, Ondukushu Onameva oifitukuti, ei natu likundeni. Inga poima apa napa ende eima linene, ile Mukwanayuma inga nafye. Mukwanayuma ita fi, oina yakaume kange, ye oina yaNamututanghwetu, ina ya mwene woshilongo.

Inapa pita omafiku Mukwanyama a fya. Ovakuliongalo, ovo mwa li hamu yakula pamwe nependa Stefanus, onye ovaxunganeki pefimbo letu, moshiwana shetu.

Nanye ovo tamu yakula ehalakano alishe, inamu tila okulondwela oshiwana eima linene la enda moshiwana. “Tala Odjona yaKalunga tai humbata po omatimba oonyuni.”

Oiimati yoshilonga sha tate Stefanus, oi li momesho etu. Medina laJesus ohatu mu tange patangumuno lohamba David ta tangu-muna eume laye Jonatan. “Omukwetu Jonatan, ove wa li omuholike wange, omapenda okwa fya po ngahelipi? 2Sam. 1: 17,26-27.

Omwene ne mu hekeleke onye ovaviyauki naStefanus nomufiyekadi meme nodikwa. Inamu fya oluhodi ongaava vehe na eteelelo. Omwene ta ti: “Ohandi mu ile mu ka kale apa ndi li.”

Malakia Hauanga

Mateus oye ake umwe wovashangi a tumbula ovalumenhu ava. NaLukas ou ngo iha fii ko mevangeli laye okaningwanima keshi, ine shi popya. Omolwaasho oshiningwanima eshi oshidjiu okuyeleanifwa ku monike oushili washo kutya owa li naanaa ngahelepi, kakele ashike komahepu oo makulu.

Omweendindjila umwe nomukonakoni wenhele inadi shiivika doilongo, Marco Polo, mondjila yaye imwe okwa hokolola ehokololo lipe mekwatafano naali, fimbo kwa li tava i naxe kuKiina 1272. Fimbo kwa li tava ende nondjila yoipindi oyo ya kwatakanifa efuta laKaspia netale laPersia, ova tokola va panuke mo mondjila oyo va yuke kondjila yaSilk oyo ya ya kuKiina.

PuSava omuwilikindjila okwe va ulikila tungo linene, olo a ti kutya okwa li ombila yeehamba nhatu. Marco, okamatyona ashike keedula 17, oka ya pudo ka ka tale nawa, meni vati oka mona mo omidimba dovalumenhu vatatu va kukutikwa nawa, aveshe konyala ove na eexwiki dile neendjedi.

Ye mwene okwa li ngaa a hala kushiiva shihapu, osheshi ovo kwa li Ovayeuropa votete va lyata tete eemhadi davo kombinga oyo yaushilo wokokule, nde shikumwifa shine ne kuvo osho sho kutya omuulikili winya naye ke shi sha, osho yo ovanhu vamwe voposhilongo osho. Eshi ve shii, osho ashike kutya omidimba odo oda kala po lela efimbo lile.

“Aasoomi inaye tu longa elaka lyawo”

Ohaku uvika omanyenyeto gontumba nenge gongandi ngashi ando kutya, Aasoomi inaye tu longa elaka lyawo. Yamwe otaa ti kutya, Aasoomi oyi ile oku tu pika, oshoka inaye tu dhikila ehanganano lyetumo lyoradio, yo inaye, tu futa iimaliwa oyindji.

Osha puka sha pitilila okuyeleanitha Etumo nEpangelo lyoshilongo shaandjeni. Shotango kape na ompumbwe yokutseya Oshisoomi, katu nampoka tatu ke shi longitha emanopo lyethimbo ashike. Aasoomi oye tu pe ompito yokukala tu na uuthemba wetu. Inaye tu shoshomeka noku tu tiliha, tse tu ilonge elaka lyawo oyo tu kale tatu popi manga tatu etha lyetu aavalelwamo.

Oya li ya hala oku tu tseya nomadhigu getu yo ya vule oku tu kwatha molwashoka otu uvitathane nawa. Ngoka ta lalakana okutseya elaka lyoye okwe ku simaneka. Elaka lyawo ka lya li ombinga yoku tu kwatha, shila oku tu etela ashike uumpyakadhi, onkee omalaka ngoka ya li ya tala otatu ga pumbwa shili oye ga longo ngashi Oshimbulu nenge Oshiingilisa.

Oradio oyo oshinakugwanithwa shepangelo nosho wo okufuta omakwele Oli na okuputudha aantu noshilonga shika osho etumo lyalyo. limaliwa tayi li longitha oyoshilongo. Kape na ngoka e na okupandula he molwoshithima te shi li megumbo, ngele egumbo ndyoka oli li pankalathano yopantu. Nokuli oku na okumona oshi-

Helena, ina yomupangeli Konstantinus okwa tile okwa uda kutya, mOushilo wOpokati okwa fudikwa eehamba nokwa ile ko eke di konakone. Ehepu otali ti ngaho kutya okwa li a etelelako omakipa ovanongo ovo nde te a kake tete mongerki muKonstantinopol, muMilan pefimbo linya.

Eshi tuu Milan a hovela okupangelwa kuFrederik Barbarossa pefeleti eti-12, okwa kupa po omakipa oo mongerki nde te a twala kuCologne, meumbo liwa lohingoli. Fiyo onena omakipa aa otaa talwa omakipa ovanongo, veenyofi, nande nee omufinda wavo ohau xulile ashike pokukufwa kuMilan, kuBarbarossa.

Okwa fa itaa dulu okukala pamwe naa a monikile kuMarco Polo konima yeedula dmafefe muSava. Osheshi Marco ngenge ina pukifwa kovafatululi, nena ovanongo okwa li va hapu ve dule vatatu. Ile ngenge okwa li ovo naanaa, nena omakipa okuMilan na Cologne itaa yelifa oshinima.

Shapu natu tye ashike kutya Mateus ye mwene okwa li a eta ongano molupe lwoshiningwanima sholela kutya, Okudalwa kwaKristus otaku shakenifa omaxunganeko aeshe Etestamendi Likulu. Eshi otashi ti kutya, Kristus oye omuxupifi a teelelwa efimbo lile nohamba yOvayuuda, Kalunga kashili nomunhu shili neifano laye otali shiivi ounyuni aushe. (Southern Cross)

AAVALI OHAMU FUTILE OYANA YENI

Olwotango oku mu shangela aamwameme mOmukwetu opo ndi yamukule epulo lyomusimanekwa M.T. Ndakalako, lya holokele moshifo No.20 nuumvo, epandja eti-5, moshipalanyolo “Oufiya wOshiwaambo oulunde wongaho.”

Osha yela kutya aantu kaye na okuthigululwa koyana, oshoka iinima ohai kongwa nuudhigu, yo aana ohai monika wo nuudhigu. Andola kakwa li ngawo, ando okanona okakwawo kahe.

Ihe ngashingeyi sho ngele egumbo lya pi, megumbo e tamu pile ondhikwa yomumoye, owa li u na oku yi futa. Mpaka ote pula kutya, omolwashike to futu, ngele omunona omumoye?

Aanona ngele ya pitikwa ya thigulule oohe, nena itaku ka kala we omukiintu e na omulumentu. Omathigululo oga za nale. Omulumentu, omukiintu gwoye ngele a si, iho yi po nando, sigo aakwawo taa thigulula.

T.I. Shipanga
Tsumeb



ndji shi vule oshithima.

Epangelo lyaMalawi nosho tuu galwe oyo ya pumbwa okupandula S.A. Etumo itali pewa uusama komukalanguka, oshoka oyo aakwiilongo nekwa tho lyawo ekwiilongo. Aasoomi kayi ile okukonga eliko nesimano lyawo ye ne, nokuli oyi ilongekidha okutiwa, “Twa pandula, indii po nawa!” Nombili ashike. Ndyoka endhindhiliko lyomuntu e ku tala ngashi i itala yemwene nomwiifupipiki nokuli.

Oku na shili Aasoomi yamwe, oontumba noongandi, aawinayi panshitwe, waalye, “Kashiimbi ndjola.”

Opo u mone kutya etumo lyaSoomi olya longo lela, thiga po utale o-

mudhingoloko gwongerki yaElok, nena kukala inoo tya, elago oli thike peni sho twa li twa pewa Aasoomi. Tala, ongerki yetu oya mono eipangelo nokuli manga oomvula ethele inaadhi tsakana. Shika ito shi adha nando mo matumo galwe.

Ope na mpoka aatumwa taa lombwelwa “Mutumwa, inda kaandjeni,” uuna yi iningi aanafaalama, oshilonga sheuvitho ye shi pilulile mumwe nomu landu gwokatongo, uuna aavalelwamo itaa iinekelelwa iilonga yevangeli. lini ma mbika oya limbilike momatumo ogendji, ihe hametumo lyaSoomi, onke otu na ongunga yokupandula Aasoomi.

O.T.Emvula

Onda hala metumo...

da dja kep. 2

Onda hala vali okweendulula oshipopiwa shange nde shi tulile mOmukwetu ongepu-kululo, kutya ohatu ningi ngahelipi ngenge ndi udite eifano lomoshilongatumo? Paife moshitaingerki keshe omu na ongudu yoshilongatumo, kakele koshitaingerki shaKavango, ndele ondi shi shi otava ka hoolola diva diva ongudu ei, osheshi kwinya yo epya ola ti-lyana shili. Eengudu edi odi na omhito oku-kongela ovapuli voshilongatumo eenhele, osheshi kudo taku i omapulo taa di komapya etumo nodo tadi diladila olyelye ta yakula omutumwa ou aha kale ashike moluhepo. Ovapashukiliitayingerki otava shiiva eengudu edi notava pukulula nawa, kutya olyelye omuwiliki wayo, nondelineekela otamu kundafana nawa nongudu oyo noto mono enyamukulo liwaliwa tali ku hafifa shi dule nale.

Nongaashi sha tongwa luhapu ohai shi tongo natango meongalo keshe, naku totwe eengudu doshilongatumo, nena ovanhu otava mono oilonga ya wana yokulongela etumo. Nomovanhu ve li ngaha va ika okulonga oshilongatumo meongalo ile meumbo ile mukunda wavo, ovo tava wapalele okutuma Ova mona nale omukangha meni layo, ve dule ovo tave ke li twa omaudjuu, ndele inava kola okwaa humbata. Nomanga omupuli ina ya komushitayi, oku na oku kundafana nomufita waye opo va tule oshinima meshikula-fano koshipala shaKalunga.

Eengudu doshilongatumo moitayingerki otadi dula okupulafana openi pe na omhumbwe omuyakulitumo di kwafafane okumonena ovapuli oilonga. Nongenge inaku monika manga di va nangeke momaongalo meengudu, doilonga yetumo.

Omutumwa a tumwa kongudu yonhumba mongerki oye aeke e na elao osheshi okwa humbatwa. Pamwe nandi kumaide ovatumi va kale nokupashukila ovo ve vatuma, mu va ifane moyongalele yeni ile mu va talele po, peenhele davo nande olumwe nga modula pamhito tamu i pewa.

Onghe ohai nyamukula nee kepulo eli nda yukilila kutya Onhele opo i li, ndele oimaliwa kai po. Tu xwameni momaongalo etu oimaliwa i holoke, opo apa tapa pumbwa okulonga noimaliwa, pa longwe yo, ndele tu dilikeni kutya, oshilongatumo otashi longwa nohole yaKristus. Indilila ovatumwa, yandja oiyandjiwatumo nomwenyo wa yela, longela Omwene woye. *P.Andreas*

Eso lyOmukwaniilwa Ushona Shiimi



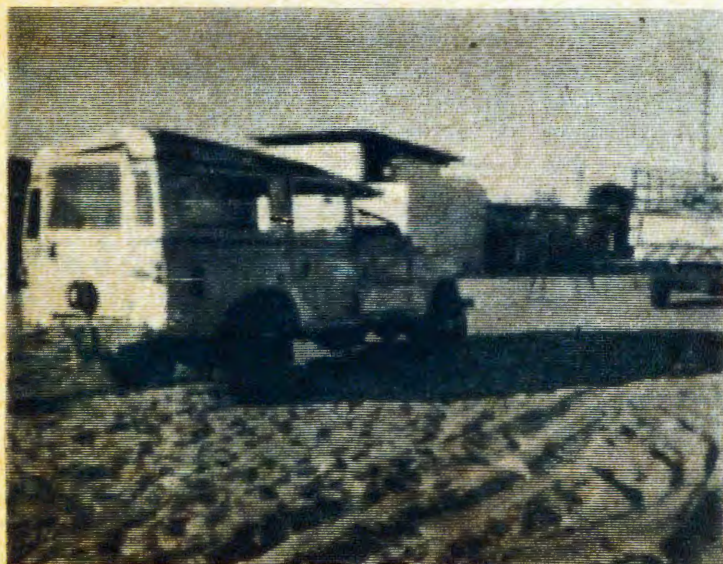
Onkundana yi inyengitha iigwana ayihe ya-Suidwes oya uvikile moradio yeti-14.11.1971 kutya omukwaniilwa Ushona Shiimi, Ongandjera, okwa hulitha oondjenda dhe ombadhilila moshiponga shoshihauto esiku tuu ndyoka komatango, manga kwa li mondjila yokuya kiilonga kOshakati.

Oomaila konyala dhi vule 60 okuza mOshakati u uka kOmbalantu, omukwaniilwa opo a adhika e li koluuli lwoshihauto she shiilonga Osoondaha sho oshihauto oshinene shofraha sha pindi po oLand Rover ye nokugalangata lwaali. Oya adhikile mo ye li yatatu, ihe omukwaniilwa oye awike a mono mo oshiponga shi thike mpoka.

Mo-1968, omukwaniilwa Ushona Shiimi okwa adhika opo a lengwa kEpangelo Iya S.A. a kale oshilyo oshikuluntu shEpangelo lyOwambo pamulandu gwomavigumbo. Moshilonga shika okwa li a dhimbululwa ota vulu naanaa okuhumitha komeho uukwatya womavigumbo mokukwatha epangelo Iya S.A. litsakanithe shono tali shi dhiladhilile aavalelwamo.

"Omolwe, ehukumomeho alihe tali monika mpaka olya tsakanithwa sigo ompoka," osho Komufala Omunene omusamane Jannie, de Wet, a hokolola moluhodhi olunene.

Omalongekidho omanene oga li ga ningilwa oshituthi shefumviko kepangelo Iya S.A.



Oshihauto moka mwa sile omukwaniilwa Ushona, naashoka yi ipumumwe nasho to mono ombinga yimwe kolulyo lela.



Moshiketha oshivanawa shekende poshipala, omudhimba gwomusimanekwa Ushona Shiimi ogwa langekwa montaneho yoshigwana aashihe shaNgandjera mombelewa yoshilongo, megongalo Okahao moka omukwaniilwa a shashelwa.

Manga efumviko inaali tameka potundi 2.00 komatango eti-19.11, iihauto naayendi kolupadhi oya adhika taa pookele poombelewa dhoshilongo mpoka nakusa a langekwa naampoka elongelokalunga li na okuningilwa komumbisofi gwongerki Dr. Leonard Auala. Konima yelongelokalunga noyipopipiwa yaayenda ayehe ya simana yoshituthi, omudhimba ogwa humbatelwa kiilyo yOngundu Ompitithiveta moshihauto oshiludhe.

Oshihauto osha li tashi ende kashona pokati komukweyo omule gwaanasi kola yomoosikola oonene Okahao nOngwediva sha kwatela komeho ketanga lyaapolisi yaS.A. aaludhe mboka taa ndhelela nokuhika oontunda dholuhodhi. Shika osha ningwa moshinano ngiika shoshitine shimwe shomaila.

Olwo lwotango mOwambo sho mwa dhanwa oshituthi shefumviko pamukalo gwesimaneko enenenene li thike mpoka nopashingolo shosheneshene.

"Ngele efumviko itatu li ningi nesimaneko

lilyo yOmpitithiveta Filippus Kaluvi naSilas I-pumbu kolulyo, taa fala oshiketha shomudhimba moshihauto, shi ye komawendo okukutha pombelewa yoshilongo.



Pombanda etanga lyomankuma olya kwatela oshihauto shomudhimba komeho tali imbi, manga mefano pevi iilyo yOntotimpango tayi lalake nakusa hugunina. Oshilyo Kornelius Ndjoba otashi ekele evi moshilambo.

li thike mpaka omolwoshigwana ando shoshene otwa li tu na oku li ninga omolwepangelo lyaS.A.," osho Ndjayi Komufala De wet a popya.

Omusamane De Wet ngoka a li omupopi a simana moshituthi shika okwa hokolola kutya omukwaniilwa Ushona okwa li i iholola, miinima ayihe ongomupangeli lela. Okwa li a tala ezimo lye, a tala oshigwana she nokwa tala wo uuyuni auhe. Okwa gandja omayele okwa kala omuholelwa omwaanawa, okwa tseya oompumbwe dhoshigwana she nenge dhuuyuni, ihe okwa li wo ha tala onakuyiwa nkene tayi ka kala.

Oministeli Ushona pafatululo lyaKomufala okwa li iha kundathana nomuntu kehe, iha popyagana, e na ombili ihe shono e shi lombwele oha tonatele shi tsakanithwe nohe shi ningi pamikalo odhindji.

"Shika osho naanaa oshinakugwanithwa shomuleli omwaanawa, nosha kala uukwatya womukwaniilwa Ushona," osho Komufala De Wet a ti: Omukwaniilwa Ushona oye a li omuleli gwotango mOngandjera omukriste okuza sho a lala oshilongo peha lyaheku lu Shaanika shlipinge 1947. Edhina lye olya tameke okuholoka mepandja lyotango lyiifonkundana oyindji sho a tsikwa omutenge gwelelo lyOwambo ayihe, nosha eta eyooloko lyomadhiladhilo moshigwana she.

Opwa li ashike eipulo kutya ando a kale

po natango, ando eyooloko ndyoka lyomadhiladhilo olya ka vala iiyimati ya tya ngiini? Pamwe osho wo shoka sha tumbulwa kuKomufala Omunene nomadhiladhilo ngaka kutya, ngiika Kalunga okwe mu kutha po, manga iiponga mbyoka kwa li te yi dhiladhililwa inayyi mu adha.

Moshituthi shefumviko omwa li wo aakalelipo aasimanekwa yomavigumbo galwe, ngashi oKavango noyaDamara nosho tuu Aakayoko. Nomatumwalaka gehekeleko oga zile muS.A. alihe sigo muSuidwes, kaatiligane nokaaludhe.

Ina tsa kumwe natse aluhe momadhiladhilo ge, ihe nando ongeyi otwa li twe mu pumbwa a kale e na omwenyo. Ngele olyo ehalo lyaKalunga a hulithile iilonga ye ondji-lakati, Kalunga ne tu pe ano ishewe omukwatelikomeho ngoka e shi okukonga uuwanawa woshigwana she, hawe mwene.

Pandjokonona ngashi ya hokololwa kelenga enene Titus Mbago, omukwaniilwa Ushona okwa valwa 1919. Oye a li amushanga gwotango gomukwaniilwa Shaanika, shlipinge nogwoshilongo. Omumvo 1942 okwa yile kiita manga inaa tameka iilonga yuuhamushanga. Opethimbo lyelelo lyUshona oombelewa dhiilongo odha tungwa moshilongo kehe paindilo lye, osho elenga Mbago, lya ti.

Nakusa okwa thigipo omuselekadhi gwe, noyana ye vule 20 aakiintu naalumentu



VA FIA PO MANGA KONGO

Meme Feni Hamunjela pamwe neumbo la-vo alishe ova fiya po manga epya letumo Kongo omo va longa efimbo lile nova lundulukila koshilongatumo shokouninginino.

Meme Feni okwa longa oshilongatumo mokati kOvayelegele oule weedula 10. Oshilonga eshi okwe shi hovela fimbo okakadona pamwe nomutumwa Eino Penttinen. A dalwa 1925 meongalo Ongenga, okwa kala e na omhepo ya pama moukriste waye fimbo omunyasha. Okwa kala e lineekelwa meongalo lavo nde okwa nangekwa tete moshilonga shoukulanhu weongalo okakadona, eedula hamano.

Nonande a kala noudjuu novanyasha vakwawo omolwoshilonga shaye eshi, ina lengwa nande okushi wanifa, osheshi a shiiva oo te mu longele. Meme Feni eshi a mona



Nonuumvo ndjika oku na oyendji mboka kaye [shi Okrismesa shoka tayi ti] kuyo, omolwetu nangoye mboka inatu ya ko kuyo nenge inatu galikana Kalunga a tume ko kuyo. Dhimbulukwa wo momagalikano goye mboka ye edhililwa moondholongo dhomapangelo opo elaka lyOkrismesa li thike wo nokuyo.

“Osima ongay”tii ku pandula, Nge ndaa na ohole ndjo yoye.

Opo ndi hale ayehe ya hupithwe, Ndi ya ete komushigakano gwoye.”

OONKUNDANA PAFUPI

Ongundu yOraata yepangelo lyOwambo oya hogolola omukwaniilwa Filemon Elifas a kale manga peha lyoshilyo oshikuluntu mOraata shoka sha mana oondjenda ombadhilila, omukwaniilwa Ushona Shiimi. Omukwaniilwa Elifas mOndonga, okwa li omuministeli yuuyyuki mOraata ndjoka. Ehogololo lyolyene ngiika otali ningwa mbala petameko lyomumvo tagu ya.

+++++

Aawilikerki yoongerki oonkwaevangeli paLuther, muSuidwes, oya li ya gongala ishewe naKomufala omunene gwavalelwamo yaSuidwes, omusamane Jannie de Wet, omasiku ngaka mOvenduka. Uukumwe wiigwana nomihoko dhaSuidwes nkene wa pumbiwa noitau vulu okuyonwa kooveta dhomatopagulo giigwaná owa kundathanwa kuyo. Osho wo omukalo gwokondhalate ngoka tagu teyagula uukumwe wopambepo kaakalimo ayehe yomevi ndika.

Aawilikerki mboka ya nyolele ombilive ya ya koministeli yepangelo lyaS.A. nuumvo,

omhito yokulonga mokati kOvayelegele osha kala she mu hafifa unene. “Kwinya onda xwameka unene vakwetu opo va longe olonga yavo nomukumo,” osho a hepaulula ye mwene oshilonga shaye penya muKongo.

Meme Feni paife okwa yeulukulwa vali komhito yoku ka yakula ovapaani vokuuninginino, nde ota kuminwa unene oshinima eshi, osheshi kasha li she mu yelega naanaa kutya otashi dulika noupu.

A hombolwa kutate Andreas Shayefa, nove na ounona vane, meme Feni muye inamu uya natango elunduluko lasha mexwamo lohilongatumo nande e shi longa efimbo lile nokwa shakeneka omaupyakadi mahapu musho. Oye ota hambelele unene kekwafo e li shakeneka moyoongalele ihapu mEngela oyo tai hepaulula oshilonga tumo. Paife ova tembukila kouningino kEtunda. Omwene ne va wedele eewino doshilonga osho ve shi lonee meitavelo nomohole.



Jeremia J. Kangonga

Sha gwana okuhambelelelwa Kalunga

Otatu mu pandulile elongelokumwe lyeni neitulomo one amuhe mwa kala mekwatathano natse oku tu tyayela iikuni, opo tu wape okuhohela pombiga. Shino oshe tu etele enyanu enene kali shi okuyelekwa nasha. Otatu hambelele wo omolweni mboka mwa kala noku tu galikanena, oshilonga She shi hume nawa komeho.

Nomumvo tagu landula 1972, otatu tegelele natango eyambidhidho lyeni miinima ayihe mu tu tyayele iikuni tu wape okutema omulilo gwewangeli gu yelegele mokakololo ke he nomegumbo kehe.

Otatu mu tegelele ishewe mu inyolithe oshifo shOmukwetu ngashi hamu shi ningi shito, ne mu hiye ayehe mboka inaa mona nale ompito yokwiinyolitha. Omumvo tagu ya naa toole omba moshigali.

Tsikileni ano oshilonga sheni ngashi hamu shi ningi shito, oshilonga sheni kashi shi osima, omOmuwa Mwene gwOkrismesa oye mwene ne mu pe elago neyambeko lyaaluhe mOkrismesa ye nomomumvo Omupe. Kundweni,

J.J. Kangonga

OMUKWETU

Oshifo shOngerki onkwaevangeli paLuther yomOwambokavango
Die Nuusblad van die Evangeliese Lutherse Ovambokavangokerk
Oha zi mOniipa,
Omukuluntu gwoshifo/Hoofredakteur Omumbisofi Dr. Leonard Auala,
Amushanga/redakteur Sebulon Ekandjo
Ondando komumvo mOwambo 70c, kUushimba noKavango 90c
Kombanda yomafuta R1.30.
Oondando nomambestelo naga tumwe kOmukwetu,
Oniipa, P/B. 2015, Ondangwa S. W. A.
Oshinyolwa shuule

wondeimi	1	otashi futwa	R1.00
oondeimi	2	“-”	R1.19
oondeimi	3	“-”	R2.70
oondeimi	4	“-”	R3.40
oondeimi	5	“-”	R5.00

Oto vulu okutuma efano lyaashoka wa hala shi tseyithwe nomatumbulo wo gasha ngele ope na.

The Finnish Mission Press Oniipa
P/B 2015, Ondangwa, S. W. A.