

OMUKWETU

Registered at the General Post Office as a Newspaper



Elalakano lyongerki kali shi okukuna uutondwe

EHA LYONGERKI MUUPOLITIKA OLINI?

Osho tuu oshilonga shongerki shoka, yi itule miinima yopapolitika? Ongerki inayi kanitha tuu eha lyayo, nge nani otayi popi uupolitika? Ongerki inayi etha tuu oshinakugwanithwa shayo, ngele itayi popi sha kuupolitika? Omaipulo ngaka ohaga uvika pethimbo ndika muSuidwes, ihe ogo ga kala wo mondjokonona yongerki.

Oombilive dhoongerki oonkwaLuther muS.W.A., ndhoka dha nyolelwa kEpangelo lyaS.A., nodha leshelwa wo omagongalo gadho, ngiika nadho wo odha gwedhele ko omapulo galwe ogendji.

Ongerki nepangelo, oyo iikaha yaKalunga tayi longo kehe shimwe meithikameno okuyakula omuntu gwe. Omuntu ngashi e li owala, a yugwa kuulunde ombili, ohole, netegameno lyokukalamwenyo kwe, muka nenge megulu, ota pumbwa ano mbika ayihe, ongerki nepangelo yi mu shilipaleke.

Ongerki oyi na ethiminiko lyokuthitika aluhe omisa dhomonkalathano yomuntu kehe Hes. 3:21. Edhila-dhilo ndika olya talululwa nondilo onene wo moshigongi shoongerki dhomuuyuni auhe, sho shagongalele muNew Delhi, India, 1961, moka mwa tilwe:

“Hamukriste nando ta zimininwa okunyanyukilwa omukalo kehe omukutu gwepangelo, oshoka kape na we eshundulo lyuuntu lilwe li vule omatilithagano nomangwandjagulo komuntu.”

Opo mpaka ongerki hayi monika ya fa yi itula miinima yopapolitika, nge tayi hedha kEpangelo oku li guna. Ongerki otayi simaneke eha neithikameno lyepangelo pamukanka gwOmbimbeli, Luk.20:25 ihe shika kombinga yongerki itashi gwana. Ongerki oya tseya wo uunkundi wepangelo ngashi Dr. M.Luther ta ti:

“Ngashi ito adha ombelera yondhila megulu, osho wo ito adha aluhe ukriste wa yela mepangelo.”

Naashika hasho ethiminiko ando lyongerki yi ikwatelele ko kiinima yopapolitika, aawe. Uupolitika otayi u thigile aluhe miikaha yepangelo lyo lyene, nali lele, nali tule evuliko nondhimbo, mpoka lya kana. Uuna tali mono ihe emakelo, ngashi omusitagongalo J.Beckmann te shi yelitha kutya; olyo alike li ininge omuyakuli gwomuntu nokulongitha omikalo dhe nomauvito ge, opo li tsakanithe ehala lyalyo, nena osha yela kutya olya ya pondje yomusinda gwalyo paKalunga, nomunwe gwongerki ogu na okuulika oshiponga shoka. Shika osho sha li ehuku lyokuhedha kepangelo lyaS.A. noombilive dha leshwa omasiku ngaka.

Ombilive ya za mOmapangelongerki gaali, Epangelongerki lyaElok, Ev. Luth. Ovambokavango Kerk, nomEpangelongerki lyaELK Ev. Luth. Kerk mUushimba, oya tuminwa kiilyo yoongerki adhihe dha tumbulwa pombanda mUushimba nomOwambo, opo ya yelithilwe nawa ukwatya, wetokolo lya ningwa eti-21.6.1971, mombelewa yuuyuni muDen Haag, Holland. Etokolo ndika oli na sha nelelo lyaS.A. kombanda yigwana yomuSuidwes, ngashi e shi ningi etata lyethelemumvo.

Etokolo lyOmpangu yuuyuni ndyoka lyu utha S. A. kutya elelo lye mpaka oli li pondje yoveta yuuyuni, sho S.A. mwene ine li taamba, osha eta kashona epiyagano maakali yomuS.W.A. unene sho taa lundilwa kutya yo inaa hala etokolo lyuuyuni. Onkene mokukwatha iilyo yoongerki, omapangelongerki ga tumbulwa pombanda, oga nyola ombilive tayi landula mpaka:

kOmagongalo gOngerki Onkawevangeli paLuther yomOwambokavango,

kOmagongalo gOngerki Onkwaevangeli paLuther muSuidwes-Afrika (Etumo lyAandowishi.)

Aamwameme mujesus Kristus,

Otatu mu kundu one amuhe noohapu dhajesus: “Ombili nayi kale nane.” (Joh.20:19).

Mesiku eti-30 lyaJuni 1971, Omapangelongerki gaali goongerki dhetu oonkwaLuther oga gongala kumwe, molwaasho otu uvite kutya mokathimbo haka otu na okupopitha omagongalo getu nohapu yewiliko noyeulukilo.

Otwa sa oshimpwiyu shokukala kwokomeho kwevi ndi, notwa sa oshimpwiyu wo shiigwana yi ili noyi ili yi li mo. Oshimpwiyu shika katu shi na owala nena, ihe unene tuu ketokolo lyOmpangu yuuyuni ndyoka lya ningwa meti-21 lya Juni 1971. Okuza mpoka otu uvite kutya, itatu vulu okukala twa tala ko owala notwa mwena. Otu uvite ano kutya manga tu li ongerka, ngele tatu tsikile owala twa tya thilu, ondjo otayi ka kala yetu, nonakuyiwa yevi lyetu naantu yalyo otayi ke tu pa ondjo.

Etokolo lyompangu yuuyuni koyendji yomutse olya li shili euvilo lyomagalikano ogendji, molwaasho etokolo ndika kuyo olya li etegameno lyemanguluko noli ya etele okukalamwenyo kuuntu. Otwi inekela kutya aantu yetu itaa matukile koongundu dhilwe, osho wo koV.V.O., shaa tuu Suid-Afrika itee ya tindile uuthemba wowenewene, ano itee ya gamuna komauthemba gopantu.

Omandaati ndjoka ya pewa Suid-Afrika, oya kwatela mo onkalo yombili noyemanguluko mokati kaakalimo ayehe yaSuidwes-Afrika, ombili ndjoka yi kalekwe mo noyi kolekwe. Ombili yashili itayi pitika aantu ya tondathane. Ihe otu wete kutya aantu yetu oya shoshomekwa, uutondwe pokati kaantu otawu indjipala, unene pokati **komuluudhe nomutiligane.** **Ehumokomeshiponga** lya tya ngeyi, otu shi shi pamadhiladhilo getu olye etwa komukalopangelo gokayoya (okatongotongo) notali kolekwa kuko.

Otwa itaala kutya komavi gopondje ohaku kala efano lya pilama, sho haku ti otu na ombili mevi lyetu. Ombili ndjoka oya kalekwa po nondhimbo.

Memanguluko lyomuntu omu na wo emanguluko lyeuvitho lyevangeli. Otwa sa shili oshimpwiyu oshoka kooveta nokoopango ndhoka odhindji aakriste yigwana yi ili no yi ili otaa imbwa okugongala kumwe nemanguluko nokupulakena oohapu dhaKalunga. Paveta yopakakombo noludhi (oveta yokutula aantu muungundu noku ya kaleka pehala lilwe), iilonga yongerka otayi nkundipalekwa unene, nuukumwe wongerka pokati kiigwana yi ili no yi ili otawu katekwa. Aauvithi naakriste ohaa mbandamekwa. Omathimbo gamwe ohaa hindwa moshilonga shawo sheuvitho, ngashi metindilo lyoopaasa. Ehumokomeho lyashili lyaakalimo yaSuidwes-Afrika pamunkanka gwopakriste, oli na okukala tali hingile kuukumweno kumwayinathana mokati kiigwana.

Otu shi shi nawa shili kutya, olyo oshilalakanenwa tashi kalelele mehumokomeho lyomonakuyiwa. Epangelo ishewe mokutotapo omukalo gwomavigumbo olyo naanaa tali eta etopoko pokati kiigwana, notali koleke etopoko ndyoka. Ohaku popiwa aniwa kutya, omadhiladhilo ngaka gopapoletika otaga fala iigwana memanguluko nokomeho. Ihe tse mba tu li uungundu uushona, itatu kwathwa nando osha komayoololo ga tya ngeyi. Aantu otaa ikalekelwa ngeyi opo yaa kale nando ye na okampito kokutya sha mehumokomeho lyevi lyawo.

Otwa hala okutseyithila iilyo yomagongalo getu, naakriste wo yalwe kutya, tse wo otwa tokola opo tu lombwele wo epangelo onkalo yomalunduluko ngoka ge na okuya. Otatu mu indile amuhe mu kale mu na ombili nomu kale mu li mombili notu konge aamwameme miigwana ayihe. Otatu mu kumagidha wo mu tunge shili ontopa hakuteya omatsakanano nomatsikililo.

Aakwanegongalo aaholike, tse Omapangelongerki inatu dhiladhila ando tu kune uutondwe nuukwaanombili, nomakondjithathano nelaka ndika lya yela, aawe. Elalakano lyetu okukala owala moshili nomonakuyiwa ombwanawa yaantu noyigwana yetu nonando otu hepekelwe elalakano ndika.

Omuwa na kale pamwe nakehe gumwe gwomune noku mu wilika. Tu galikaneneni aapangelgi ayehe, (Tim.2:1-2) opo ya wape okulundulula onkalo ombwinayi, yo ya tale shili uwanawa wevi ndika nowaakalimo yamo noye u lalakanene. Medhina lyOmapangelongerki gaali.

*Omumbisofi Dr. Leonard Auala
nOmunashipundi gwEpangelongerki
lyOngerki Onkawevangeli paLuther
yomOwambokavango.*

*Paulus Gowaseb
Omunashipundi gwEpangelongerki
lyOngerki Onkwaevangeli paLuther
muSWA, Etumo lyAandowishi:*

mOvenduka eti-30 lyaJuni 1971.

Omwenyo gwaaluhe nondilo yagwo

Mat. 13:44-46

Ethimbo ndika aantu oyendji itaa kotha nando, ihe otaa kongo mpoka taa hupithile oonkalo dhawo. Omuntu sho a hala etathapya, ota li nando oongunga, opo e li ilandele.

Yamwe otaa gandja oongombe nenge iimaliwa yawo opo ya mone epya ndyoka. Ngoka a hala iimaliwa ota landitha po oongombe ye opo iimonene iimaliwa. Ano mokukonga uuyamba wontumba, ou na okuhanagula po uukwawo.

Omwenyo gwaaluhe nondilo yagwo, otagu monika kumboka taa halakanitha po ashihe shawo. Uuntu wawo auhe. Omwenyo gwaaluhe ngele tagu kongwa, otagu pula u landithe po uulunde kehe, e to gu pewa. Ngele wa pewa omwenyo nguno, nena oto vulu ihe okuthigulula oshilongo shaKalunga.

MuSuidwes omwa tseyika ondilo yokawe. Oshilongo shegulu oshi vule okawe mondilo yasho. Opo u shi mone, tango oto kongo uuyuuki womuJesus, u pingakanithe uulunde woye nuuyuuki waKristus.

Ehempululo tali ningwa tango, opo uulunde tau tsilikwa komushigakano, nuuyuuki tau ningi uuthiga womuntu. Gandja ano ayihe u kale nOmuwa. Oohapu dhaKalunga mokulikola omwenyo gwaaluhe, otadhi ti: Omaj. 2: 4. Muuyuni kamu na sha shi vule omwenyo nguka tatu gu mono moohapu. Iil.12:14.

Opo u likole omwenyo nguka gwaaluhe, Jesus ota ti: Mat. 19:29. Jesus ina dhiladhila aalanduli ye yaa kale ando niinima mbika a tumbula, aawe. Okwa tseya mpoka omwenyo gwomuntu hagu idhiingile unene.

Aantu yamwe otaa etha oohapu dhaKalunga, e taa vulika kaamwayina aakiintu nenge aalumentu. Taa ethithwa koohe nenge kooyina, okulonga ehalo lyaKalunga, e taa longo uulunde. Omolwoyana, aavali yamwe ya holeke uulunde nomayono. Ngele wa etha ayihe mbi, omwenyo gwaaluhe oto gu pewa.

Paulus Omuyapostoli ta ti: "Ihe ayihe mbika ya li eliko lyandje, onde yi dhini iiponga" Fil.3:7

Leonard Shongolo



Efano kombanda ongundu yaanasikola yokombanda kOshigambo, ye li muukumwe wehangano lyawo. OKUC. Oyo ye li wo naampaka.

Omaimbilo ondando ya lunduluka

Omolwoondando dhiinima ayihe dha yeluthwa, nondando wo yoombapila niilongitho yi ili noyi ili ya lundululwa, ondando yomaimbilo oya lunduluka wo pamikalo mbali.

1. Eimbilo lyepeko epu, ewanawa, otali landwa R1.50.

2. Eimbilo lyepeko ekukutu li li ngashi shito, otali landwa R1.30.

Omo ge li ano mositola yomambo, Oniipa. Endelesa u imonene mo lyoue manga inoo tokelwa.



Eopalo lyeshito olyo oshinima shimwe shomomagano ngoka Kalunga e ga pe omuntu a kale e ga na mokukalamwenyo kwe. Oku na oyendji taa hanagula po eshito lya tya ngeyi moku li fika po nenge oku li tetagula po.

Ekundo kune aaleshi

Aamwameme aaholike, otandi mu kundu noohapu dhOmuwa gwetu Jesus kutya, kehe mpoka tu lyeni po, tu dhimbulukweni kutya, otse otwa kulilwa. Kalunga okwe tu uvanekela omwenyo gwaaluhe, nomwenyo nguka ogwa kala mOmwana. Nguka kee na omwana, oye kee na wo omwenyo.

Natu kale tu na uuyuuki we, noku hala Kalunga muuyuni mbuka wongashingeyi, manga twa tegelela egwanitho lyelago lye. Tu mu pitike e tu yoge, oshigwana she muukwaaluhe. Omuv. 11:9-10.

Aron Andima

Ondimunyasha natango

Vamenhoonye, nye mwa ti tuu kutya omule ka lya nghula, ndelene ove kamati kanekanda? Nande mwa ti ku na omufango, onghe ngo nee wa dile keumbo, ku na tuu omukulu nondenge, ku na nanghelo noshiveli tava kwenauka ondjala?

Hai ti, nounyasha ohau dala ondjaba ngashi oufiku. Dimbulukwa omushiti woye ove u palule xo nanyoko efimbo manga linyenye.

Mumati wanekanda, noshuta nga yoye yondilo, nde onghela owa uhalele koshi yonghungo, wa fa ove Kaluwapa, ombwena yokulombo? Eshi haku ti ku na mutanda ku na ngobe, olyelye te ke shi twala nee komesho oshiwana shi na eliko tali fyaala ngaha koi-longo? Ongula inaku sha, ngenge ou papale kwa sha?

Nghitalwa ame mesho mandjibi, onda ti ashike momufitu omu na ongwe, inai tya oukongo wohamba naw aluke. Ehe ku lombwele ha woye. Kamati kanekanda, ou na oshivala ngekola, shaashi owe lininga omudipai, u na okakuva kaMetje. Dimbulukwa ounyasha woye, oo ondilo, onghe u longifa nondilo nomokufimaneka Omwene.

Johannes N.Kashokulu

Nge to i, ino lidimbwa po

Omunhu nge ta i kokule poushiinda, koilongo ile komikunda, tete oha tala oinima aisho oyo ta pumbwa a ende nayo ngenge oi li tuu meshikulafano. Ngenge ta dimbulukwa oshinima shimwe ehe shi kwete, ye ote shi pumbwa shili, ote lipyakidile unene fiyo ote shi mono, opo nee ota twikile ondjila yaye.

Omukongo nge ta i koukongo, ita fii po na nde cinema aisho oyo hai longifwa koukongo, omunahambo osho, ovaendafuka aveshe osho yo tava ningi. Ndelene ngenge taku monika umwe waava twa tumbula apa, ta monika a fiya po osho tashi pumbiwa, oha talwa ehe shii kulineekelwa.

Ovalumenhu omayuvi noomayuvi osho yo ovakainhu vahapu ovakwaneongalo vOngerki yaElok, ohava i koilonga kOushimba, ile mOwambo, kOmbishi nakumwe ku lili. Ohava longo meendjila, moilonga yeengobe, yomatale ile omeva nomatungo, ve na eembapila ile oukalata voilonga, odo tadi holola kutya omunhu oye omukwashilongo lela. Ohava popilwa koukalata ovo, osheshi elipopilo lokokanya, ihali kwafa sha.

Ou ehe kwete okakalata koshilongo ile koilonga yaye, ota talwa ehe shi kulineekelwa.

Apa ohandi ku lombwele, ngenge to i, ino lidimbwa po. Dimbulukwa alushe okakalata koye keongalo, osheshi oko ondombwedi yo ye yopakriste, oyo tai ku yakulifa momayakulo aeshe pamhepo. Oto pumbwa ombapila yeongalo ile okakalata, opo u yakulwe pehe na omalimbililo.

Ngenge to mono nande fiku limwe oshiponga shombadilila, u yakulwe diva nande ito shiiva okupopya omolwoshiponga. Pamwe to indile Esakramendi Liyapuki, oto du lu okuyakulwa molwokakalata. Nge to file koilongo, u na okakalata koye, ombila yoye otai yapulwa pehe na omaongaongo.

Okakalata keongalo oto ka pumbwa alushe opo u kale wa fa u li meongalo leni nande u li kokule. Naau e na ombedi yaye, ohai ulikwa nedidiliko lonhumba li li mokakalata, novayakuli aveshe ovo to hange, otava dulu okukundafana nawa, fiyo to mono ekwafo lokomwenyo.

Ngenge wa hangika koshiponga shoudu no wa hala ne u mangululwe opo u dule okufya nombili, ovayakuli otava nyengwa ngenge ku na okakalata koye keongalo. Hano nge to i, ino lidimbwa po, nge u na okakalata koye ka yela, ile inaka yela, ashisho shimwe, oto yakulwa apeshe opo to ende.

"Ongienda yOmwene Jesus Kristua nai kale novayapuki aveshe. Ehol. 22:21."

Natanael Shinana

Albertus Moses, Tsumeb- ota nyolele kovaleshi aveshe vOmukwetu ta ti: Ovamwameme, ope na eemhata dinene omolwaJesus, nde oda eta po ekonakono linene ngashi sha tongwa komushamane omuyuuki Simeon, ta tale okaana ke li momake aye nde tati: "Ou oku li po okupundula nokuyambula vahapu vomulsrael. Hano osho ta kala ngefano tali twilwa eemhata, ondubo nelimbililo. Osho yo nafye tu shi shiiveni fye tu linekele Omwene Kalunga ketu, momahepeko nomoixuna hatu i moneni.

Omutilima gwongundu moshigongi shaagundjuka moNkurenkuru. Kolumoho omusitagongalo Heikki Ushona nokolulyo lela omuhingi gwo-shihauto shaagundjuka Kanelombe.

JESUS KRISTUS OYE OMUWA

Osho sha li oshipalanyolo shontanda yaakadhonagongalo mOngerki ayihe kOupundi eti-25-28.6.1970. liningwanima ayihe yomOntanda oya li ya kwatelelwa moshipalanyolo shika JESUS KRISTUS OYE OMUWA. Oowandaha, ootundimbimbeli dha ningwa mo odha li dha tungilwa koshipalanyolo shomumvo gweligolo. Jesus Kristus oye Omuwa ETEGAMENO LYIIGWANA OKRISTUS.

Aanona aatumwa komagongalo ya eta oondjimbo nomahokololo mombepo yEtumo. Pwa dhimbululwa nkene aanona ya hwama shili moshilonga shetumo.

Montanda omwa li wo mwa ningwa omathigathano gi ili nogi ili. Unene tuu mokugandja omagano omolwomumvo gweligolo.. Okwa li kwa gongelwa ngeyi:

Oshitayingerki shOndonga

1. Oniipa	R 8.00
2. Oshigambo	R 6.00
3. Eheke	R 6.00
4. Omuntele	R 5.00
5. Onayena	R 4.00
6. Onyaanya	R 2.00
7. Olukonda	R 1.13
Kumwe	R33.33
Omaweendo	R35.50
Kumwe	R68.83

Oshitayingerki shUukwanyama

1. Kongo	R53.50
2. Onheleiwa	R20.00
3. Engela	R17.00
4. Okalongo	R10.00
5. Olupandu	R 5.40
6. Ohalushu	R 5.00
7. Ondobe	R 2.20
8. Ohaingu	R 2.09
9. Ongwediva	R 2.00
10. Omundaungilo	R 2.00
11. Edundja	R 1.00
Kumwe	R120.19
Omaweendo	R86.30
Kumwe	R206.49

Oshitayingerki shUuninginino

1. Okahao	R28.00
2. Ompundja	R13.00
3. Nakayale	R 7.00
4. Onaanda	R 6.79
5. Othika	R 4.00
6. Ogongo	R 4.00
7. Elim	R 3.79
8. Tshandi	R 3.20
9. Onesi	R 1.50
10. Elondo	R 0.50
Kumwe	R71.78
Omaweendo	R78.00
Kumwe	R149.78

Tala kep. 6



OHOLE HANO OSHIKE?

Ongenge nee omumati ta lombwele Maria kutya ondi ku hole shili, ye konima yokafimbo okwe mu nyo-nauna po, ye ine mu hala vali? Eshi osho nee ohole ile outondwe neshunduko? Momikunda nomomaongalo, omu na oukadona vahapu ve li moluhepo linene va endwa nondjila ei.

Kakadona ove, lungamena ohole yekonda. Tala nee, okanona aka wa mona, ihaka filwa vali oshisho, ove mwene yo ou kwa li haku tiwa ou holike nee mwa ti, ihaku talwa vali. Ohoni oi ku kwete keshe efiku, eshi oshiponga sha kula.

Ovanyasha ovafimanekwa, ngenge u hole mukweni, ou mu hole shili, haku mu tula mefyo. Kala we mu halela elao lokomwenyo. Omukulili wetu oye aeke te tu pe ohole yoshili noshipango shayo.

Johannes Kashokulu

Va alula Jehova, va alukile kwoove

Ovaitaveli vOmwene amushe ovo mu he na edimbuko meilikano, ohatu mu indile neemwenyo da taalela kunye di na elineekelo kutya; ngenge tamu ilikana, inamu dimbwa po okutumbula yo oshilando shetu, shaVenduka Omwene e shi alulile mondjila yaye.

Neudo omutondi okwa fa a mona omhito okukala omutumba moshitata, nokwa ninga omupangeli wamo. Okwa fitika eendjila dovanyasha novashamane vahapu okuuya keetundimbibeli nokolwiimbo lavo.

Paife molwiimbo, otu kwete ashike ovanhu vatano ile vahamano, nande engudu ohali kala alushe la twa kwii. Omo ve li ndele paife va kwatwa komaimbo ouwa woshilongo.

Omafiku mahapu hatu udu yo ondaka yoluhodi ovamwameme vahapu tava dipaelwa molukanda, vamwe vomuvo, ovomeengudu detu. Otava dipawa molwoukolokoshi. Onghe hatu mu indile; Inamu tu dimbwa po oku tu ilikanena moshilando shetu mu tye: "Va alula Jehova va alukile kwoove." Ponhele yokangudu ka xupa po.

Abraham Haileka

Epulo kovalishi vOmwetu aveshe

Omolwashike eongalo hali yandje oushima novalumenhu kutya, ovo ovatei veehombo oomaumbo? Alushe otatu lesa moifo kutya kvalumenhu ovo ovatei tava i alushe neetamba nokomaumbo kave shi ko vali. Osho kuu ile ope na sha?

Onda pula opo ndi yukifwe osheshi omeva ihae li nyenge mu he na sha, okambodi. Otu li kuC.D.M. ndele omatwi okomaumbo ngo osheshi oko twa dja. Eshi ndi li oku ondu udite ngo nekulu eshi ta ningi.

Kokamba oye, koivilo oye nokOndangwa nOndjondjo, vali odula keshe vati oku na edimo la hangwa mo. Hai tumu ngoo oimaliwa ndi ye kai po. Ohandi kala ne ngahelipi, osho ne vahapu va enda ngaho. Ndele inatu uda nande omukulunhu umwe ta kumaida omunhu e li ngaho. Vahapu va lilifwa kovakainhu vavo nounona va hepa omolu okuhangika nomadimo. Ovalumenhu vahapu va dimina osheshi inava hala okukala ovapombolome, kune oshiwa osheshi ne omu li puvo alushe.

Aayenda ya simana

Omusamane omuhongi Pauli Laukkanen, manginga inaa shuna nuumvo kOsoomi, okwa talele po aamati yokOliindili noye ende pamwe nomusita gwaamati yomehalakano tate Gerson Max. Gumwe gwomaamati ya taamba aayenda mbaka okwa nyola ngeyi;

"Nonando hatu taamba aayenda oyendji, yamwe ookume ketu nokuli taye tu pe iikulya nomizalo, tate Laukkanen natate Max, oya kala aayenda ya simana mokati ketu, oshoka oye tu etele omagano gevangeli."

Etalelopo ndika olya li lya ningwa esiku lyEyeluko lyOmukulili moka aamati naasamane ya vangeliithwa nohapu yaKalunga noya ulukilwa wo omafano goshilongo shalsrael ongomakundo ngoka ge etelelwa komusita Max sho a galuka kuSoomi nuumvo.

Ndapewa Nangolo

Lombwela oshikumbu shoye nashi ye

Vakwetu oshike nda dalelwa pefimbo eli? Onda nyemata unene osheshi oshiponga shi fike apa oshinene shokunwa. Eshi hashi li tatekulu, nameekulu oku shi shi. Tala eshi ta landelwa mo limwe, ye ta heleya nokuli. Hameme nde omeekulu ou a dala meme. Mbela apa pe na meme ongahelipi? Tate natekulu kave na mbudi, osheshi ohava lambida nande va kolonda nale komusike nakostantinyu.

Oixuna, ou a shikula nge oku li nokuli kokamba yaHakadiva. Oku na eedula 9, fimbo ame ndi na 12. Eshi omunhu ha pindi ongoma e fike apa, oye nee ta teelelwa e tu kufe moshiponga ngenge a di moshikola? Hano exulilo eli lounyuni, oukolwe.

Ou shii tuu hano? Ohau kulu nde tau mene omidi. Oto hovele nee eshi inashi dja meendunge doye. Oto vake, to dipaa, to haele nghiti u kwate keenghono, osheshi oumbada owa tewa po komalodu. Okukala iho nu xwepo, opo uha we kombasikela, uha lyatwe ketuwa nghiti u ha fye oipundjamenye.

Ite ku lombwele kawoye shiveli. Lombwela oshikumbu shoye wani, nashi shune keumbo lavo, osheshi ovo ve na okahongaifa nokunwa nasatana ou omufita wavo. Shi ningeni molwaKalunga, hameenghono deni.

T.J.Moshana

KONDJA EKONDJO EWANAWA LYEITAALO

1Tim. 6:11-16

Omukwetu, ngashingeyi otu li muunyuni wehumokomeho ngashi tatu ti, ihe tu dhiladhile kutya ehumokomeho ndika tu li mo mulyo, otali hulu po nuunyuni walyo, onke tu indileni oonkondo komunankondo gwopombanda, tu pewe okusinda, mbyoka tayi thindile mokuhula po.

Tu kondjeni manga ku na ethimbo, oshoka oku na okathimbo, kowala nguka e na okuya note ya ihe.

Natalia Mvula

Odalate oshinima shii, shidjuu, paife tale-ni kunye mu heshi pele vamwe ombedi. Ovaevangeliste novalongi ove hole okutonga oshinima eshi. Enyeme olo la tei fa po eumbo eli osheshi oli na ovalumenhu vavali. Ohandi kanifa shihapu shomeenghono dange nani oonona kave shi vange.

Hano tu taleni ndele tu eteleni onghe-nda oinima tai nyonauka omolwomalipulo mahapu mai.

Barnabas Sakaria

Exumokomesho tali ka xupipala mboli

Ovanyasha ovalihongi ovo tu li meefikola ngeno tu xumife Owambo komesho, paife vahapu ohatu i shunifa monima nee. Itatu tungu vali nde ohatu tungulula ashike. Apa pe na ofikola neengudu dimwe dihe fi dovanafikola, opo pe na ovawanifi vokahalu kombelela yavo, nande ve shi shi kutya okahaluta otaka ka dala efyo.

Oshilonga shomunafikola okuxumifa oshiwana shavo komesho, ndele ngenge otu li ashike mohayotwa omu, aayee, katu na nande eshi tatu kwafa. Tu kendabalenii okufinda omamakelo oo hae tu hange. Eenghono do-ku a finda ohatu di pewa kuShimeshaalushu. Tu dulikeni yo keemhango deefikola tu li mo, opo tu ha etele oshiwana omilaulu, fye tuha nyemateke oonakudala.

Ovakulunhu vetu ohave tu file oshisho nawanawa mokukala kwetu mofikola, ndelenee otwa fa katu wete elihepeko lavo eli, osheshi ngeno hatu kendabala okutungu.

Natu kondjeni ekondjo liwa. Keshe ou ta indile, ota pewa, ou ta kongo ota mono. Ngenge hatu kongeni Omwene noku-konghola poshivelo shaye, ote tu pe aishe twe i pumba.

Omuhongwa mukweni.

Ongwediva



Uumatyona owindji owa li hau mono osikola itaayi piti mo mbala opo u ka yuule oohi dhawo ndhoka dha li tadhi li nawa.

Indila nokupata oshivelo

Mokulesha oshipalanyolo, vahapu tava kwatwa kehaluko nokomalimbililo. Otave li pula, ohandi pata ngahelipi omuvelo wange ndi indile, nande inai pumbwa sha vali.

Eshi u li mounyuni to li, to nu, to kuta nowa hafa alushe, nena oto hovele okutum-bula kutya owa wana, ito pumbwa okwiindila. Ngenge wa fikama omufika nde to likevauka, u tale, nena to mono kutya, nani ino wana, oto pumbwa shihapu natango, ohepele yokomwenyo.

Ngenge nee to nyengwa okuya monduda yoye, kufa u tale Ombibeli yoye noku i konakona, u pwilikine Jesus nghee ta kumaida ovahongwa vaye eshi ta ti..... Mat. 6:6-8. Naapa oto dula okumona po ondombwedi ya yuka yokwiindila.

Ngenge wa indile nde to pewa, ino tya wa wana nee wa pwa. Indilila vakweni momukunda weni, meongalo leni nomongerki yeni. Indilila ovafindjala, eehepele dokomwenyo, ookaume koye naaveshe.

Manguluka kwaai younyuni, dama ei ya kola tai ku pe eenghono domwenyo.

L. P. Musheko

ELELO LEUMBO LAKALUNGA

Elelo leumbo laKalunga otali popiwa paife mounyuni ausho mokati kovakriste. Olo osho sho shomukriste keshe okufila oshisho eumbo laKalunga, tashi ti, eongalo nemona laye, neendunge daye, neenghono daye, nomwe nyo waye. Unene muAmerika edina eli elelo leumbo laKalunga tali holola okuyandja kwopaukriste pahalo la manguluka.

Eongalo olo eumbo laKalunga nofye ovana meumbo olo, ngashi hatu lesa mu 1Joh. 3:1 kutya ofye ovana vaKalunga. Oikos - eumbo. Moshigereka kamu na oshitya famili ngashi momalaka Ovaeuropa makwao. Eumbo ngashi mOshiwambo oli na ovanhu vahapu ovo ve na ekwafafano neyakulafano neudafano nokuxumifa komesho eumbo, noku li watela momaudjuu nomoiponga. Eumbo laKalunga tali tungwa kuKalunga mwene. Tala 2.Samuel 7 Osho yo Ps. 127: 1 naHebr. 3:4.

Tate Kalunga ta longo alushe nokushita sha shipe, ndelene te shi ningi paife nekwafo nyakulo lo vana vaye. Hebr. 3:1-6. Kristus Omona meumbo olo laKalunga. 1Petrus 2:5-omamanya e na omwenyo meumbo lopamhepo. 1Petrus 4:17. 1Timoteus 3:15. Nhumbi tu na okukala meumbo laKalunga. Kristus emanya li na omwenyo 1Petrus 2:4. Markus 12:10. . . Ofye metungo eli, Efesi 2:22.

Eumbo laKalunga olo ongerki yaKalunga omunamwenyo. 1Tim. 3:15 nde tali yandja omayambo opamhepo 1Petrus 2:9 na Efesi 4:16. Otembeli yaKalunga Efesi 2:21, 2Kor.6:16 Jakob 2:19. Ovakriste va yandja omaumbo avo a kale eenhele dokulongela Kalunga. Lesha Filemon 2, na Oil.16:31,34 na 2Timoteus 1:16. Mewiliko laKristus Markus 14:58 naKalunga Oil. 20:32 naOil.9:31. Omhepo lya-puki. Moukumwe ngashi omamanya metungo 1Petrus 2: 1-10.

Ohole tai tungu 1Kor. 8:1. . 1Kro. 14:4. . . Efesi 2:22. . . Kol. 2:7. . .

Kol. . 2:7. . . 1Kor. 3:5-15. Ofye ovatungi veumbo eli naKalunga. Jesu ta popi elelo leumbo muLukas 16: 2. Paulus mu1Kor. 9:16-18. Tala yo 1Tess. 2: 4. Elelo eli olo efaneko laKalunga lokuxupifa omunhu-. Efesi 3:1-13. Rom. 16: 25-27.

Ovaleliumbo tava popiwa ngashi Eliaser mu 1Moses 24: 1-67. Josef meumbo laPotifar nopusFarao . Koneka osho tashi popiwa kuPaulus mu1Kor. 9: 16-18. 1Kor.4:1. . Osho yo mu Lukas 12:42. Ofye ovaleliumbo opo tu tukulile ovana vaKalunga oikulya yavo. . . 1Petrus 4:10-11. Eyakulo Rom. 12; 13, Hebr. 13:2,1. Tim . 3:2. . . .

Hatu longifa eeshali detu ngashi hatu lombwelwa mu 5Moses 6:5 naMateus 22:37. Noshu mu 2Kor. 10:5 nomuMateus 18:24 naMateus 25:15. . Olutu letu 1Kor. 6:19-20, 1Petrus 4:16. Efimbo Ps. 31:16, Omuudifi 3:1, 8:6, 1Tess. 2:13. . 1Kor. 2:7. Efimbo letu yo olo emona laKalunga. Hesekiel 20: 11, 20. 2Mose 20: 8-11.

Emona letu. Ps. 24: 1,5012. Job. 4: 1. 2Mose 19:3-6. . . . 1Mose 28:10. 1Ondjalulah.29: 11-15 Malakia 2: 1-7. Mose 18: 32.

Pa J. Pentikainen

NEW DELHI - Ovanhu ve fike lwopo-400,000 ova ya onhapo youdjuu oo wa holoka muPakistan, molwoita pokati koshiwana. MuCalcutta, oshilando shepangelo laIndia lokouninginino, omwa dja yo ondaka tai ti kutya ovafadukipo 3,000,000 ove uya yo muBengal, odolopa yaIndia i li peengaba daPakistan lokoushilo. Oita ei pokati kovau-ninginino novaushilo muPakistan, oya hovelele eti - 25 laMaalitsa neudo.

Aagundjuka momathigathano gawo miigongi, ohaa yelutha omapandela gawo. Mbaka oyomegongalo lyaElim ya yelutha lyawo muule manga taa imbi palufo lwawo. Osha ningwa moshigongi shaagundjuka ayehe yongerki omumvo 1970, momumvo gwehambelelo.



Jesus oye Omuwa dha za kep. 4

Oshigongi shaagundjukangerki mOngwediva eti-24-27.9.1970.

Omasindano moshigongi shika oga pandulwa ngeyi:
ligandjwa:

Omaimbilo.

Nakayale ya pewa
10 Elongo lya ukriste.

- mOshitayingerki shUuninginino:**
1. Okahao R157.20, ya pewa 5 Vululukweni manga, na 5 Etestamendi Epe.
 2. Niimwandi, R115.20 ya pewa 8 Elongoxupifo na 2 Omahepeko gaKristus.

mOshitayingerki shUukwanyama

1. Ongwediva, R310.00, ya pewa Omatestamendi 10. Eenhana, ya pewa 10 Mwa pewa Omagano gandjeni wo omagano.
2. Ohalushu, R186.00 nongombe, ya pewa 10 Indileni nde tamu pewa. Engela, ya pewa 6 Omahokololo gongerki na 4 Indileni nde tamu pewa.

mOshitayingerki shOndonga

1. Eheke R166.00, ya pewa 5 Etestamendi Epe na 5 Vululukweni manga.
2. Onayena R163.00, ya pewa 10 Mwa pewa omagano.

mOshitayingerki shOkavango

1. Nkurenkuru, R30.00 ya pewa 10 Evangeli pwaLukas. Ya sindana wo mOlwiimbo no ya pewa 10 Irugana yoyayapostoli.

Yalwe.

1. Oshakati, R309.50 ya pewa 5 Ovaneumbo ovanelayo na 5 Omalinyolifo Ouvalelo Uya-puki.
2. Onandjokwe R131.15, ya pewa 10 Okambo kopeke.

Paitayingerki:

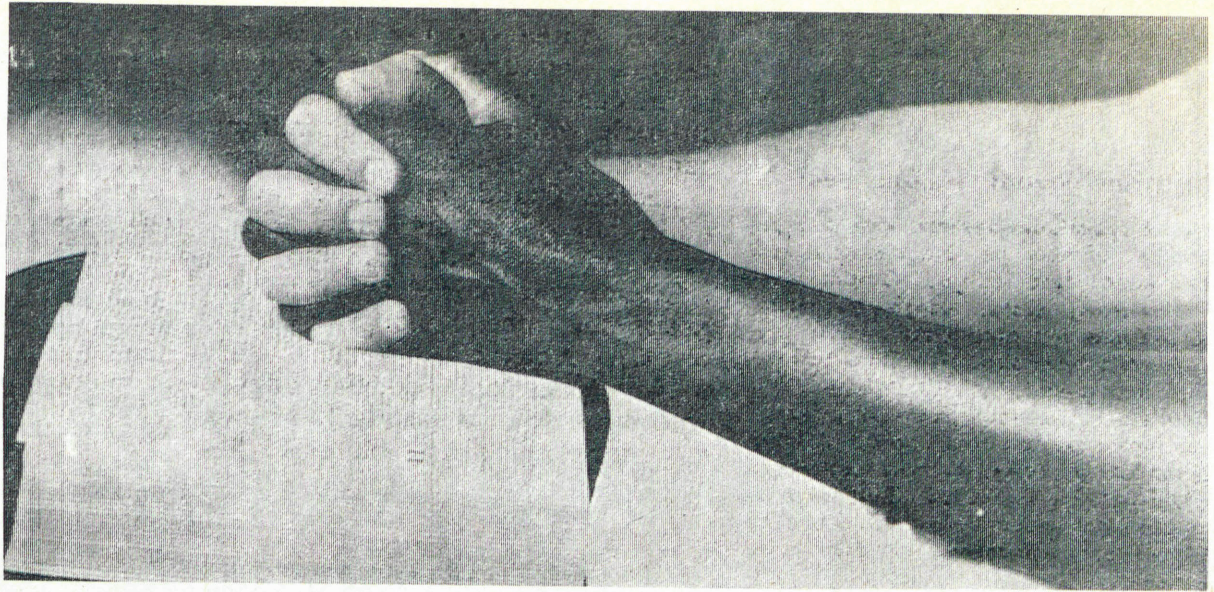
1. Oshitayingerki shUukwanyama R1936.64, sha pewa 1 Ombimbeli.
2. Oshitayingerki shUuninginino R1374.42, sha pewa 1 Ombimbeli.

Mongerki ayihe.

1. Ongwediva R310.00, ya pewa Ombimbeli.
2. Oshakati R309.50, ya pewa Ombimbeli.

“SHA ALULA SHI NONDJAMBI”

Pethimbo ndika ope na iinima oyindji tayi thikamene oshigwana. Ihe Jesus omusita omukuluntu ota lombwele aluhe; "Kaleni mpaka ne mu galikane mwaa pwile momamakelo." Tu tuleni ano iikaha yetu kumwe ngeyi tse tu mu galikane e tu hupithe mo methimbo ndika. Oye mwene oku uvane ka oku tu uva.



Nghe omunyasha omulihongi ta kwafa eongalo laye, ohatu tale omesho etu kwaavo ve li muSt. V, fiyo nee opombada. Noi-twa itatu nghe tave shi ningi otai shi kula apa.

1. Talelapo luhapu olupale leongalo leni, opo omufita novayakuli aveshe ve ku shiive, nye mu ikafane navo. Etalelopo eli, otali eta yo ekwatafano lopamhepo, nekwa-tafano eli otali ku kwafa okulonga meongalo, osheshi ou wete paife openi pe na omhumbwe yoye, eshi mwe shi kundafana

Omuhongwa ta kwafa ngahelipi eongalo?

- nomufita fiku linya.
- 2. Kala nohokwe yokwoongala Oshoonda-ha keshe. Ovanyasha ovalihongi ovo tava kanifa eemhito davo dokwoongala. Onghatu ei otai twala mounghundi, notai eta oku-hashiiivika meongalo.
- 3. Lesho Ombibeli yoye. Esho osho na-naa ounghundi wetu ovanyasha ovalihongi, osheshi otwa tala katu na efimbo okulesha Ombibeli. Vakwetu tu li diinikeni okumona efimbo olo. Ashishe osho twa hala oku shi longa nosha pumbiwa, ohatu shi mono mOmbibeli, omo ondaka yaTate Kalunga

tai tu lombwele.
 "Olyelye ou handi mu tumu?" na olyelye te tu ile ko?" Nyamukula hano u tye.
 "Omwene aame ou, tume nge."
 Onda lineekela ovo kwa li vehe shii ngehe tava kwafa eongalo lavo, nande ve na ehalo tali va hepeke, nokanghendabala aka nde ka eta kanini, otava hovele okutala nge-nge tava dulu. Kashi na oupu okuninga, osheshi omuyelani ta kondjifa alushe, nde omufita wetu, ota kondjele eongalo laye.
 E. T. Valyange
 Ongwediva



MOSHATOTWA, ONANDJOKWE

OSHITUTHI SHAAKONGINDJILAKADHONA SHOMIMVO NTANO MOWAMBO

Otashi ka dhanwa eti-20-22.8.1971. Omataंगा agehe taga ka thika kOshatotwa mEtitano eti-20.8 komatango. Omukongindjila kehe na etelele iinguma, iinima yokwiiyoga nompunda yiyakulitho yokulya, Ombimbili nOmaimbilo no-futo yoshigongi 50c.

Ohungi pomulilo otayi ka ningwa kaantu ayehe yokOnandjokwe, mOsha-

totwa, mEtihamano eti-21.8 potundi 7.00. Uukalata wohungi otatu ka landithwa koosende 15.
 Elongelokalunga noshituthi sho shene otashi ka ningilwa mongerki yokOniipa mOsoondaha yeti-22.8.
 Otatu ka kala tu na aayenda aasimanekwa; omukuluntu gwomuSuid-Afrika Mrs. Greenwood, omukuluntu gwomuSuid-Wes, Mrs. A. Geel nomuku-

luntu gwomuTsumeb Mrs. Scholtz.
 Otaku ka landithwa wo Oshifo shaa-kongindjilakadhona koosende 80. Ngele owe shi ilandele nale, shi etelela mohungi nokoshituthi.
 Osho enyanyu ngele tatu ka mona wo aakongindjilamati mouniform yawo, mohungi nomelongelokalunga. Oye na ompito okulala moskola yokOniipa ngele taa etelele iinguma yawo.

Ounyuni ohandi waama peni

Ngenge we uya mOukwanyama, kala omweendandjila, ofimbo to uya peumbo, eshi tashi ku kundu tete, edimba. Omona weembe da telekwa. eeshe, eenghwiyu nosho tuu. U uye nee meumbo, o, tashi ku kundu, vati owa enda nee pondjala. Omu otwa li mo hatu li onghela.

U mone a ya keenduda, a dja ko nokakende. Mutima u tye, omu na omeva, likwaula mo u ta, oshipala owe shi nana nee wa fa wa handukila ou e shi ku pa. Okafimbo kanini u ude, Mukwaudimbe, kaetele nge ko vali kamwe opo handeende nondjila yange ndi li nawa.

Ee, handi ya ndi ye nondjila yange pamwe handi ka fika ngaho. Okafimbo kanini u mone eemhadi nondjila inandi hala mo vali. Omutwe nao owe ku dula eenghono, nomesho ku weteko vali.

Moukwanyama oingulu oya liwa ondjala, osheshi shingulu naye ina hala vali oinima inyika nayi. Oshikundu shapo onghundu hai longelwa mombalili, vati omongoma waHangola. Ai, poima pa tya ngaho, inapa wapaleta nge. Handi ya ndi ye kOndonga pamwe vakwetu kwinya xwepo.

Fimbo to di mOshikango, wa kufa mo limwe, eshi to ya pOmafo, oho ka umba ngaho omesho keembinga neembinga, oipeleki kupula. U vandamene mo, mumwe kamu na sha, oipeleki yongaho. Eewa, pamwe handi ka fika ngaho neeranda dange mbali (R2.00).

Apa opo nee mOndonga apa? Handiya hano ndi kufe mo limwe. Nda shakena po nakaume kange, twa kufa mo avali, pa shaala R1.90. Onde linekela ohandi ka fika noku

Mikael Batlomeus ota ti: Otandi pandula nokuhambelela Kalunga nOmukulili Jesus sho nda galulilwa uukolele wolutu ishewe. Otandi mu hambelelele esilohenda lye enene kungame. Otandi mu indile wo a wilike ndje aluhe, opo ndaa ze mondjila ndjoka a tula ndje mo.

Otandi mu halele omayambeko gaKalunga one aapangi naandohotola yOshakati sho mwa kala nokwiihepeka, opo ndi pewe oonkondo nuukolele wopalutu. Omuwa na yambeke iilonga yeni esiku kehe.

xupa nawa.

Ndi tye ngaha, omushamane woposhilongo shetu oye ou, moilonga yokunana ombalili. Nangula oye vali ou moilonga yokulandifa pongoma. Kaanaave, oshinima Etitano nOlo-makaya, ito mono po vali omukulunhu nokaana. Aveshe ova kanifa omalupe. Omilungu oda endjelela, omesho omatilyaana.

Hano ounyuni ohandi waame peni? Handi kwata ei yaUninginino, pamwe kwinya ixwe. Oshakati handi shi pe omake, hinga ndi alukila koRwacana, ndi ka mone efude po.

Hailonga woshilonga shetu oye ngaho a kunda nge tete. Oshinima otashi kini ngaho komitwe, kape na vali omwali a tala mukwao. Omaandaha nEtwali, Hailonga moilonga ina ya mo. Onghee ngo a tilyaanekela omesho Olomakaya.

Vakwetu, ounyuni hano ondi na okuke waama peni? Onda tala nde nda kumwa, eemwiyo oda telwa keembinga adishe dounyuni.

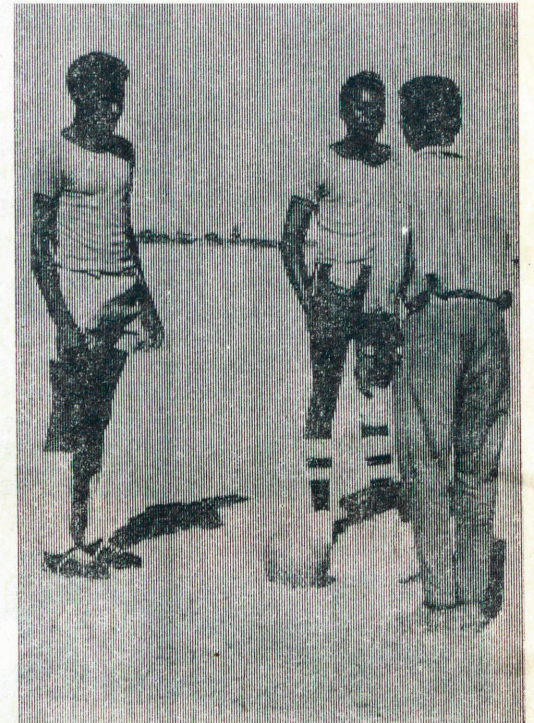
Jesus ta ti: "Itandi ku indile tate, u va kufe mo mounyuni ou, ndelene u va amene kowii." E.Warter Hamukoto

OLUHODI KUFYE OVAKOBABIS

Ovawambo mehalakano muGobabis eshi twa uda onghuwo, Omwene Kalunga eshi a ifana po omumati waye Elia Kalola, okwa li twa nyika oluhodi unene, osheshi nakufya ou, okwa kala pamwe nafye efimbo lile oku tu udifila evangeli IOuhamba waKalunga. Otwa kala pamwe naye melongelokalunga.

Nakufya Kalola oye kwa li omutivali mokupapula epya lipe letumo moshilando eshi. Okwa shikula omwangeliste Nikolaai Haukongo, ongho twa dimbulukwa diva meme Saima neefiye 7. Otwa umba ngalo, opo tu kale po pamwe nameme Saima moluhodi eli fiyo twa mona mo R6.30. Omwene ne va hekeleke moluhodi eli. Meameno laKalunga, kamu na oiponga. Omweevangeliste Simon Amutenya, oye a wilika ngalo ei.

H. Nashidengo



Aanasikola yomoosikola dhokombanda mOwambo pomimvo ndhika oya dhike omahangano guukumwe wawo moka taa ilongo okudhila-dhila nokukwatha onakuyiwa yevi lyawo. Limwe lyomomahangano ngaka ohali ithanwa Owambokavango United Club (Okuc) nohalingi pomagongalo ogendji oohungi nomathigathano ga tundulukitha. Mbaka yamwe yomahangano ndyoka mosikola yaShigambo taa dhana etanga pOniipa 1970.

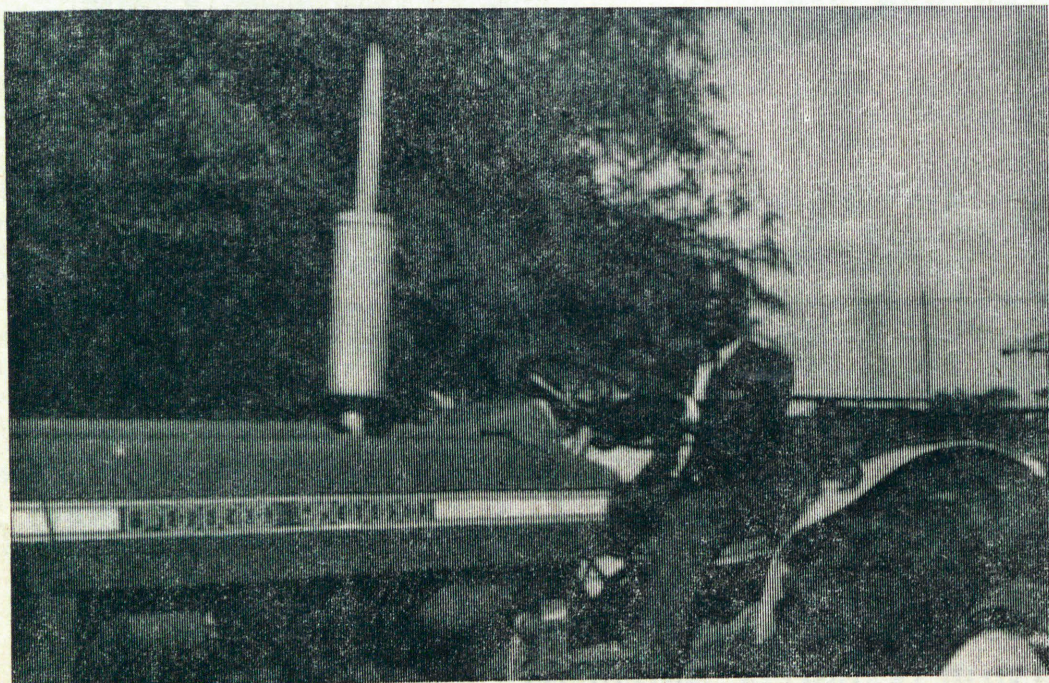
OMUKWETU

Oshifo shOngerki onkwaevangeli paLuther yomOwambokavango
Die Nuusblad van die Evangeliese Lutherse Ovambokavangokerk
Oha zi mOniipa,
Omukuluntu gwoshifo/Hoofredakteur Omumbisofi Dr. Leonard Auala,
Amushanga/redakteur Sebulon Ekandjo
Ondando komumvo mOwambo 70c kUushimba noKavango 90c
Kombanda yomafuta R1. 30.
Oondando nomambestelo naga tumwe kOmukwetu,
Oniipa, P/B. 2015, Ondangwa, S. W. A.
Oshinyolwa shuule

wondeimi	1	otashi futilwa	R1.00
oondeimi	2	---	R1.90
oondeimi	3	---	R2.70
oondeimi	4	---	R3.40
oondeimi	5	---	R5.00

Oto vulu okutuma efano lyaashoka wa hala shi tseyithwe nomatumbulo wo gasha ngele ope na.

The Finnish Mission Press Oniipa
P/B 2015, Ondangwa, S. W. A.



Opwa piti ngashingeyi konyala omvula yimwe netata sho mongerki yOwambo kavango mwa tamekwa oshilonga shokulonga omapya pamukalo omupe kashona nomambakumbaku. Koombinga noombinga pethimbo lyepululo osha tseyika nawa nkene aantu haa hilathana mokupululitha omapya gawo. Ekwatho enene o-lyo ndyoka kutya oshilonga otashi endebelelele nawa, ihe iilonga wo yo yene oyo opala. Pethimbo ndika oyendji otaa fumvikitha iihenguti yawo momapya, manga inaayi lyatagulwa po kiimuna, ihe oku na wo oyendji aasama natango, taa fike iihenguti mbyoka nokuyi lithitha po kiimuna. Mefano otate Salomo Sakeus lite-wa, enyaka lyepululo mOndonga. Iilonga yoombakumbaku okwe yi tameke nale 1944 moofaalama.