

OMUKWETU

Registered at the General Post Office as a Newspaper



IMBILENI
OMUWA



J. A. A. A.

OMAHAMBELELONDJIMBO

JUNI 1971

No 12



Ovanangeshefa eemhadi doshiwana

Omufitaongalo Natanael Shinana o kwa tongele moshongalele shovafita mEngela 1966 kutya: "Ovawambo kave fi ovapindiki, nde oshilonga shavo omapya noimuna."

Ina twifwa eemhata fiku linya, ndelene ngenge ha tale nokutongolola meemiandi daNgela, nghi shii efano olo ha pewa mo. Osheshi mwinya ngashi yo peenhele dihapu hapa ongala ovanhu vahapu, ovashamane novakulukadi otave litongo noilonga yavo kutya vo ovashingifi. Ndelene moishingifomwa yavo yoludi keshe, ito hange mo oilya ei hava longo. Shapo ehapu otali ku hange ashike kutya, oilya oko i li tai olele mo maanda.

Eendunge noluhepo ohai ombo momuti umwe auke. Ngenge Ovawambo kakwa li ve liulika kutya voo ovanangeshefa yo, shapo eendunge noluhepo oyo kwa li vehe kwete. Vahapu tava dimbulukwa natango eenghendabala dovanangeshefa okudja pehovelole lela moule weedula 20 da ka pita.

Ava kwa li ve na elalakano lili, tali eta enyonauko, ova wa mo nde inava fika. Ashike ongudu imwe yomuvo, oyo ya hovela moungone munene, ya ninga paife eemhadi noma ulu oshiwana shi fikame, shi hawililwe po koluhepo. Oya ninga oshiwana shipe sha koka momhepo, tashi diladila oinima tai kateke Owambo mekoko nomemanguluko layo. Ondaka yavo ya ninga eenghono, i shi ku pwilikinwa kEvangelo momhepo iwa.

Ngenge tava twikile ngaha metilokalunga, oiimati ihapu iwa otai ka liwa i dulife pwaayo hatu li fiyo opaapa.

Eshi shi hafifa okupwilikinwa, ile shi ku tule moule womadiladilo elinyengo eli, osho eshi sha popiwa kuNdjai Jannie de Wet, moshongalele shovanangeshefa neudo, eshi a tya: "Otu na natango vahapu ve dule 400 va indila eemhapila doilonga younangeshefa. Natu va tambule aveshi?" osho a pula ina teelega enyamukulo.

Ngenge hatu fifikinifa eisho letu eli la ama kenyonauko hali di mokuangeshefa, fye tu tongolole ashike eemhumbwe dipe odo tadi kokele pamwe noshiwana, epulo laye ohatu li nyamukula nondaka ya yeuluka-heeno! Etandavelo lOwambo, otali hapupalifa yo omhumbwe yovayakuli mounangeshefa.

Ngenge tashi pendula vali elipulo kutya, hano Omuwambo keshe omunangeshefa ngo, osho otashi nyamukulwa kefimbo loovene, ngashi la nyamukula paife kutya; ehongo itashi ti okutambula ashike oshilonga shoulongi ngashi sha li sha ikwa, ndelene okutambula yo oisho i lili moshiwana.

OMUSIKI

Oondjimbo (omusiki) odhi na etameko lyadhho muukulu wonale. Ookuku mukupulakena omawi gi ili nogi ili, ngashi ombepo sho tayi pepe nokwiinyengitha sha shoka tashi gandja ewi lyasha, epupo lyomagwo gomeya nosho tuu, oya tameke oku ga holela nomawi gawo yene. Ya yelekele wo okufudhila mooniga dhiinamwenyo ya sa, nosho miinima oyindji ya hokwa, nomwa uvika ewi ndyoka tatu li ti: "oshitoni,"- toon.

Oyi itungile nokwiihongela uunima u na omitutu, taa vulu okufudhila mo. Shoka oshili oshinyanyudhi okupulakenwa ewi ndyoka sho taye li fudhile mo pamanyantuko nopankatu ye dhi hogolola dha nika omainyengo golutu. Omanyantuko ngoka ohaga ithanwa "oritme" ndjoka ya simana unene moondjimbo dhAayafrika.

Omawi guuhumba wookuku mbono, oga li ge thike ashike pamwe, kape na ndi hali imbi pevi nenge pombanda. Ehumokomeho olye ende pamwe nethimbo sigo pwa holoka aanandunge ya tungu elandulathano lyuule womawi ngoka tatu ga adha muuhumba wongashingeyi.

Moondjimbo otu na oombinga mbali dha simana. Yimwe ohayi ithanwa "vocalmusik omusiki yopakwiimba. Omaimbilo gomEhangano nogookuwolo, oge li mongundu ndjoka. Patiyali ope na iilongithomwa yokwiimba (instrumental) tayi longithwa pwa na omawi gaantu.

Ando tu taleni pafupi kombinga yomusiki yopakwiimba unene omaimbilo gookuwolo ndhoka dhopambepo. Oshi li mondjila nosho opala oongundulwiimbo sho tadhi imbilathana nenge tadhi imbile egongalo. Shika oshopakelesiti wo okukumidhathana noondjimbo nomapsalmi. Onawa unene.

Natu taleni natango iinima yimwepo momadhambuluko, opo tu wape okwoopaleka nokuhumitha komeho okwiimba kwetu kwopakuwolo, ngashi iinima ayihe otayi humungaa komeho kehe esiku.

Mokuhogolola eimbilo opo li dheulwe, li imbilwe egongalo nenge iigongi yopambepo natu dhimbulukwe kutya, *eimbilo nalikale shili lyopambepo*, tali tungu omwenyo gwo-meitaalo

1 (a) Nali kale lya tseyika nawa omawi naga tseyike nawa lela

b) litya yi tseyike momutse nenge pwa ka le uupika wokutala membo.

2 Nali kale itaali vulitha.

a) Uuna eimbilo tamu holoka evulathano lyoonkoondo, poombinga tapu imbwa pwa dhigininwa, pombinga pwa na oonkondo unene, eimbilo itali vulitha nando li kale ele



b) Eimbilo nge tali imbwa nemanguluko, aaimbi ya nyanyukwa noye shi nawa eimbilo lyawo, nena itashi vulitha aapulakeni.

c) litya nayi tumbulwe nawa, aapulakeni ya mone ehuku lyeimbilo.

d) Okwiimba mokulekule ethimbo alihe, otaku vulitha, osho wo okwiimba pevi unene otaku lolola aapulakeni.

Otwa popi kombinga yeimbilo li kale ngiini, notatu ya kaaambi yo yene. Onawa sho mookuwolo dhetu aaimbi ayehe oye li mo, sho ye na ehalo lyokwiimba, noinaa thimini kwa. Shika oshi shi okusimanekwa, ihe onkene tu taku tegelelwa oshindji komwiiimbi kehe.

-Kehe gumwe i itule mo shili mushoka tashi ningwa mokuwolo yawo.

-A dhiginine okugongala pamauvathano gookuwolo yawo.

-I idheule ye a kale a tseyika ewi lye nosho iitya yeimbilo

-Uuna taku ka imbwa pokuma, kehe gumwe a kale e shi shi, eha lye oli li owala, ngele ina yako.

Omuwiliki gwokuwolo

Omuwiliki nomulongi gwolwiimbo te lu ine kekelwa kegongalo, na kale:

1 A tseyika ashike te shi ningi, omolwesimano lyedhina lyaKalunga.

2 Na kale a tseyika nawa eimbilo te ke li lona

3 Na kale omupethimbo, opo aaimbi yaase uunye mokutegelela aluhe.

4 Na kale omunyanukwi ta hokitha aantukolwiimbo.

5 Mokulonga ethimbo lyokupopya nali kale efupi, gandja ompito oyindji yokwiimba.

6 Ino geya, ihe idhidhimika nande shonoto longo sha fa itashi tseyika mbala.

7. Dheula eimbilo li pye nawa, sigo opehulilo. Ino pitika ongundulwiimbo yoye yi imbe manga eimbilo inaali tseyika nawa.

Mokwiimbila egongalo, onawa ngele omuwiliki ta mono omukumo okuwilika ongundu ye ngashi he shi ningi momaimbilo, shi la ongele ngaa ayehe ye shi lwete kutya ita vulu. Ngele ongundu ya thikama noyi ilongekidha okwiimba, omuwiliki ina mana po ethimbo nokukala inaa gandja ewi, oshoka otashi eta ekulukuto neiwo maapulakeni kutya pamwe okwa nyengwa.

Okwiimba nombili negundjilo nemanguluko ewanawa, otaku hokitha aapulakeni, notaku kwatha aaimbi okuthika koshilalakannenwa shawo. Ayihe yi longeni medhina lyOmuwa nokuhambelela.

Magdalena Nama enga

A ka fudha po manga

Gumwe gwomaatumwa mboka ya ka fudha po nuumvo kuSoomi, oye meme Eeva-Liisa Toivakka, omulongi gwasikola yaayakulipangi mOnandjokwe. Oye okwa kala lwaali nokuli mOwambo sho iile lwotango 1961. Okwa longo lumwe kEngela. Okwi ilongo wo ethimbo limwe lyomvula netata kuStellenbosch, S. A.

Meme Liisa ota nyanyukilwa uudhiginini waalongwa mpaka nonando haku holoka omauvitathaneko gopombambo omolwelaka. "Mpaka aalongwa otaa kambadhala pamwe shi vule muSoomi," osho a hokolola yemwene.

Meme Liisa ngoka ina yelegwa nawa kegaluko lye, ota nyanyukwa unene ngele tu uvu ongerki tayi mu ithana natango moshilonga mpaka "Kalunga oye mwene ta tseyika komeho." osho a ti.

LONGELENI O MUWA

Eps. 100

Epsalmi ndika olyo ondjimbo yopaliturgi (ye longelokalunga) ndjoka ya imbwa kaantu ya londa kondundu yaSion. Mondjimbo ndjika ya longitha unene omatumbulo nga: "Ligoleleni Omuwa omavi agehe."

Ovelise 4, otayi tu pe wo efano ndika kutya; ondjimbo ndjika oya longithwa meyapulo lyontempeli. "Ileni miiyelo ye." Moshituthi shoka mwa etwa aluhe ehambelelondjimbo ndyoka tali tumbulwa moshipalanyo lo. Naashoka sha uthwa mehambelondjimbo. 3Mose 7:11-19.

Mpaka otapa hololwa ombinga yelongelokalunga, oshoka otali hiyile aantu ayehe yaligolele Omuwa. Unene okwa tumbulwa: "Omavi agehe." Otashi tu dhimbulutha nke ne Omwiisrael ngoka ta dhimbulukwa wo amwayina ya halakanena momavi nomiilongo yilwe, ando nayo wo ya mone enyanyu lyomongulu yOmuwa, ngashi taa li nyanyukilwa Mpaka omatumbulo gEpsalmi 84:12, otaga tsu.

Enyanyu lyOmuwa otali etele omwenyo gwomuntu oonkondo oompe nohole yokudhiladhila wo ooyakwawo, mboka kaaye na enyanyu lyOmuwa. Enyanyu ndika otali mo nika melongelokalunga, notali ningi oluthithiya lwokuteka mo aluhe enyanyu ndyoka. Mehiyo ndika "Ligoleleni Omuwa", . . . , otali pe egongalo ehala ewanawa noyu uvite ekwatathano lyoshili naamboka taa simaneke Omuwa. Uudhigu noothina dha kala kokule, oye li koshipala shomuyapuki gwalsrael.

Epsalmi otali kwatelele mo wo aapagani. "Tseyeni Omuwa oye Kalunga." Aantu ayehe ya dhimbulule uuwanawa, oonkondo, oondunge nowino yaKalunga. Mbika otayi pendutha momuntu ehala lyokulongela Kalunga nomwenyo gwa manguluka nogu shi ngoka ta gu mu longele.

Uuna onyama ayihe ya tseyi Omuwa oye Kalunga awike nokwiilongela ehambelele ne simaneke, nena egwano neitango lyomOmuwa otali tana molwesilohenda lyomuJesus Kristus.

Elaka ndika otali pula sha kutse, tu uve nkene Omuwa ta ithana ayeheye oku mu longela twaa na uumbanda. Luk. 1:74,75. Omwenyo gwa nyata otagu nyengwa okuwatathana naKalunga nokuholola iiyimati tayi tegelelwa. Otagu nyengwa okuhambelela. Pasilohenda ndyoka twe li pewa twi igandje ni omalutu getu ondjambo yi na omwenyo. Rom. 12:1. Otwa tumwa nuuyuni tu ka igidhe elaka ndika; "Ligoleleni Omuwa omavi agehe." Ayehe ya holoka koshipala shaKalunga nomahambelondjimbo. Aanelago oomboka taa hambelele Omuwa omutenya nusiku. *Mika lilonga*

A hiyilwa kOwambo

Epangelongerki olya tokola okwiithana omuwiliki gwehanganotumo lyaanangeshefa akriste muSoomi, omusamane Pekka Vihma, ngoka a yi peha lyaMatti Koponen, a talele po ongerki yetu, ye a tseyathane niilyo yehanganotumo lyaanangeshefa muELOK. Ethimbo lya tengenekwa ando li kale Juni sigo Septemba 1972.

Omunangeshefa nomusitagongalo Matti Koponen, okwa tseyika mongerki yetu ayihe, sho e yi talele po omimvo mbalindatu dha piti dha landulathana. Okwa longo oshindji mehumitho komeho lyevangeli momagongalo nomokulongitha eliko lyopakriste. Otatu indile Kalunga a egulule ompito ndjika.

Rugendo kOthika

Mezuva 20.2.1971, tuna katuka kukatarera, po epongero Othika, kOukwambi. Mosigendo setu, kwa kere tuvatanano kumwe nomidungi munekuto Matti Seppälä. Mugara ku kwata sirapo, kapi a dana.

Pokatji kaSakati naSikuku, mema yihuna, ruhanzo kuna ku pupa nomukuro gwaKavango nare kawgu diworokere. Yihauto kuna kudimina mo, nye munekuto ta kondjo dogoro tuna siki poElim.

Erago tuna gwana po, munekuto Filemon Alugongo ana tu ndindire. Pomutenya ezuva olyo, tuna twikire nzira zetu. Pokatji koElim naThika, murambo po gomunene, nye munekuto Alugongo naD. Aludhilu vana piti komeho va zauke va tare apa ganasiki sihauto sinava sikura monyima, nye mema manzi sili, ni tante asi, nofute 33.

Tara munekuto muEuropa, awe, ngwendi ngura vana-ku mu twika ta lyata ko nye ta-

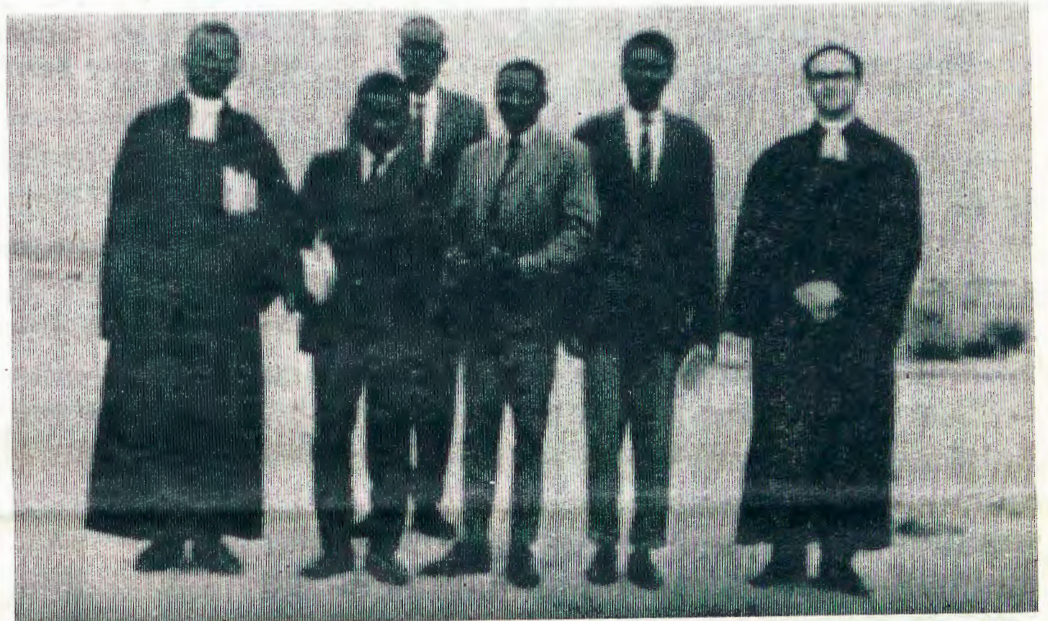
ra etukutuku omu linaku zoga. Nani nago kuzoga, nago gayidiva. Ana zahamena noondikuna kuukolivira, dogoro posirakuho nokuzunza nye mema muntu gatunda ure wa-Europa, inke ana kulihepekera, ta hepere mwenyo gomusovagani, ove wa zovagana mourunde o tunde mo.

Isinke yinaku mu sininika? Sipango saHomba, Mat.28:19-20.

Mokusika kwetu, munekuto M. Seppälä ana ninkisa eruganeno lyendi eli ga katukire lyosigongi. Ei kuna si, tuna tengura noku kondjesa nzira zetu. Ovamusovagani ilye ono kondjere simpe ko ve li vamwe vavadili kuzuva yuma.

Onokatuka tupu o tware, twara twara simpe siruwo kosili, nove vana ku ndindire o twarere vakweni mwenyo.

Jerobeam Shiyiwo



Aasita yaali mefano, kolumoho, omusitagongalo Filemon Alugongo, mOthika, egongalo epe muUkwambi, nokolulyo omutumwa Matti Seppälä, ngoka he ende nomagongalo okupopitha aanasikala, unene oStanda VI. Oye omusilishimpwiyu gweputudho lyopakriste mongerki. Nakuholola olweendo, omuyevangelistelngwa kEngela, Jerobeam Shiyiwo. Oye omutiyaali mefano okuza kolulyo.

Ovanangeshefa va teelelifwa natango

Oluno, Ondonga;

Pwa pita paife efimbo lile eshi ovanangeshefa vomOwambo va indila kepangelo va itavellewe okulonga moukumwe nokoshi yeemhangoda ufwa. Moshongalele shavo sha ningilwe pehovelohani ei, Komufala omuwiliki, S.Lubbe, okwa nyamukula epulo eli kutya vo moshongalele shOraata yeeveta neudo, ova kala ve na oikundafanwa ihapu, nde shihapu osha xupile ko inashi kundafanwa.

Okwe va pa oshilaye va teelele netimhaumbwile kutya ngenge epangelo lOwambo tali ka shuna, momutumba neudo muSeptemba eindilo lehangano olo limwe lomoikundafanwa tai ka kala mo.

Oshongalele eshi osha liwe yo kuNdjai Komufala, Jannie de Wet, omuyandjimaye moinima yemona omushamane Marais, osho yo umwe womovakulunhu vaB.B.K.

Oshongalele eshi osha indila ovanangeshefa va pewe oufemba wokulanda po omatungo aB.B.K. efimbo sha pumbiwa, ova indila nokukumaida neenghono oihauto yoshiwana i pangelwe noshisho meengalashedaB.B.K.

Ova kundafana oinima oyo tai nyemateke oshiwana ngashi okunangala poshivelo ngenge etango la ningine kwovalaule fimbo oindele tai piti ashike, ile okufutifa ashike oihauto yovalaula manga yovatilyaane tai kala nombili, osho yo ovo have livakele moshilongo okufutifa oshiwana nokutwala oimaliwa yoshiwana komadu avo, shi he shiivike kepangelo lOwambo.

Moikundafanwa aishe ya pwilikinwa nokukundafanwa momhepo iwa nope na eteelelo liwa i ka pewe omanyamukulo.

OHANDI KA YA KUMEME OKULIHEPAULULA

Omukanda wa dja modolongo

Ame Elias Zampotan, tate Zampotan nameme Elisabeth. Onda dalelwa moshilando Salvador, muKongo.

Ootate noomeme novamwameme,

Manga inandi tameka okupopya, ohandi mu kundu neendjovo dOmombibeli Paulus eshi a hokolola omaudjuu ae aeshe:

"Ndele vakwetu, onda hala mu shiive eshi sha ningilwa nge sha tandavelifa evangeli, no kutya, omapango ange a ninga ehपालulo movakwaita aveshe nokuvakwao vahapu." Fil. 1:12-13.

Nena eli moluhepo lange lokuhandukilwa komhango, ondi li modolongo, ndelene onda hangika kOmhepo lyapuki, ndi mu shangele nokuhokolola oilonga yange nghi na

ohoni. Onda mona kutya nande ondi li modolongo, Kristus okwa ifana nge ndi aluke kondjila younyuni ei tai twala omunhu mefyo.

Tate ohamba yomuDambi, nameme okwa li e hole ongerki. Ame eshi nda kula, omwaina wameme oo naye kwa li e linekelwa kongerki, okwe uya kutate e mu pitikile ndi ka kale puye. Osho nda ka kala puye fiyo 1951. Okwa twala nge mofikola yOmbibeli, omo nda kala fiyo 1955

Onda li omumati e linekelwa meongalo le tu levangeli. Onda li omweevangeliste wokweendaenda apeshe apa pe na omikunda deongalo letu. Ihai nu, ondanisha nghi na nayo, novafita ova mona kutya, heeno, omumati ou, ota kondjele shili ondjila yaKristus.

Ehanganano Iyaakulukadhi

Opwa piti ethimbo ele sho meme Josefina Nangolo a igidhile aakulukadhi oo yakwawo momagangalo ya longo oshilongatumo. Sigo onena meme Josefina ina mwena, okwa kala noshimpwiyu oshinene melongekidho ndika. Mpaka ina holo-la naanaa sha yela kutya ho ku liwe okuna shike, ihe omuntu ou uvite nga kutya kaku li owala. Kwa kalelelwa ku na sha. Pulakena sho ti itumbula:



Aakulukadhi aakwetu,

Moshinkoti nde ende mo otandi ishunununa mo natango kutya, Ehanganano Iyaakulukadhi sho ho li dhiladhila, oho ti oli na mpo lya kane-na? Aawe, nando okashona. Ngashi twe li popile petameko, osho li li sigo onena.

Tsikila nomukumo iilonga yoye yehanganano ndika, nando uyelele walyo wa fa wa holama kashona. Otashi ke ku nyanyudha komeho. Ngiika ndishi owa kala nondjuulukwe ndjoka yokulongela Kalunga koye momutumba? Gongela iiniwe yoye manga to ka lombwelwa mpoka to yi ukitha.

Ote pula kutya, oho li galikanene tuu? Nenge nangoye ku uvite ko shoka tali ti? Shaa tuu to ningi iileva, oto kiipa uusama komeho. Aangwediva yiikayiwa komitise, mpoka uyashile hapo we ye li ngashingeyi. Oya ya nale nontsi kayi lwetike we.

Ando ndi tameke okuya hokolola mpaka, ando shila to mono ndje ndi na omutoto. Nandi tye ashike kutya, nani aananguwo hamepya noshini apeke aawe, nani nometumo dhangi.

Okathimbo haka tu li po okafupi, natu ka hakaneni manga tu ka na.

← Josefina Nangolo

E TU FIYA PO

Eti-9.3.71, ola li loluhodi kufye, eshi twa fiwa po ombadilila komumati wetu Absalomo Mushelenga. Oye okwa lyatwa koshihautu mondjila yaye yokuuya keumbo ta di kOshakati.

Okwa dalelwa mEdundja, omumati weedula 20. Xe Mushelenga okwa xulifa nale oweenda, ina Petrina Gideon, oye aeke e li natango kEdundja. Omumati ou, omutekulu womufitaongalo Elia Nghikembwa, nokwa kala omutekuli waye fiyo a xulifa oweenda.

Absalomo okwa li ngo a hololelwa kOmwehepo kutya efimbo laye lokudja mounyuni omu, ola fika, osheshi okwa ya kEdundja kulna te mu lombwele.

"Meme, kala po nawa, ito mono nge vali, ame ohandi fi, nde inamu tila." Okudja oko moshivike sha landula ko, omo a mana oweenda waye.

Ookaume kaye va dile kOngwediva keumbo lavo, ve mu findikila monhele yaye yetulumuko, osho yo vamwe va dile ke-nhele dikwao. Ovapopi pewendo va dilnina okupopifa ovanyasha vepipi laye ve lilonge oshihopaenenwa sheduliko kunakufya. Omwene na hekeleke oonakufiwa po kuAbsalomo.

E.Nghikembua



Nakusa Absalomo Mushelenga

Mo-1956, efimbo lange ola fika okuya kousholotati ngashi hashi ningwa moshilongo shetu, ndelene eshi nda kala kwinya, natango onda ka ninga omukulunhu wawakwetu aveshe. Onda kala oule wodula ihai nu, nde modula onhivali, onda hovela ne okunwa, okundanisha noinima ikwao aishe ii.

Omukulukadi ou a tekula nge nghi na vali naye. Nenge onda ya kolifa (efudo) eshi meme ta ti, ino nwa, peumbo ihai nangala po vali, ohandi i kookaume kange ava hai nu navo. Nenge oimaliwa ya pu po, ohandi ka fufya tate, ye ta penge omolwohole yokana kaye, ndelene oilonga yange inai yuka nande koshipala shaau a tekula nge.

Mo-1959 onda mana ousholotati wange, eshi nde uya keumbo, tate okwa fya. Onda twikila okunwa natango nokulonga oilonga ei inai yuka kumeme nokwaaveshe ava kwa li ve linekela nge, nova efa nge nokuli.

Mo1964 onda ya noilonga fiyo kuMozambikwe, oko nda kala nookaume kange ve lili. Okwa li ndi na oimaliwa ihapu, ndelene aishe oya ka pwa po filu. Eshi nda mona kutya onda hepa nee paife, nookaume kange va efa nge kave na vali naame, onda ya koilonga yokodalate kuSuid-Afrika. Otwe uya okulonga opate 1965.

Efimbo eli, olo nee nda ya ndi mone omweevangeliste Simon, ou a kala muKeetmanshoop. Onda ya kOshoondaha oku ka hokolola oilonga yange naashi nde i longo moku-kalamwenyo kwange akushe. Okudja opo, aishe onde i efa, onda hovela okweenda okupe nokuya alushe kongerki.

Mo-1968 onda dipaa oshimuna mondjila yaSeeheima. Momhangu onda tokolelwa eedula mbali modolongo. Eshi osha dimbulukifa nge natango kutya oinima aishe ei, otai di ashike kokudina kwange meme natate.

Ondi li omu modolongo, ndelene alushe komatango nOshoondaha, ohatu ningi eanda ha. Ovahongi vetu vaMariental alushe otave uya oku tu talela po. Dimbulukwa ounona va Elli ngashi Kalunga a tile:

"Ounona voye ihava dulika, ndelene otava ka fya efiku limwe," osho sha ningwa shili.

Ounona pwilikineni oshipango shotete eshi tashi ti: Tila xo nanyoko. Ame hasho nda longa, paife ondi li moluhepo. Nenge iho tila xo nanyoko, novakulunhu veongalo, otashi ti, naKalunga iho mu tila. Nenge iho tila Kalunga, exulilo loye efyo.

Onda mona paife oixuna, nde ohashi lili-fa nge nenge hai shi diladila. Eshi kwa li hai tila meme novakulunhu veongalo, okwa li shili ndi li nawa. Paife ondi li pokupita mo, nde natango onda hala ndi ke lihokololele keongalo keshe mOushimba ile mOwambo, ndelene unene onda hala nenge onda mona ondjila ohandi i ku meme ndi ka indile eku-filopo, osheshi onda nyona, koshipala shaye noshaKalunga pombada.

Omumwameme, nenge ku naKalunga nande u kale oshipuna, u na oikutu ihapu, wa koshoka kolutu, itashi kwafa sha, exulilo loye, oixuna ashike. Ame osho nda kala nenge handi i kOshoondaha, ohai ka talifa ashike oshikutu shange, ile oku na okakadona aka ndi hole, ndelene paife oinima aishe ei, otai xwike nge, tai yahameke nge komwenyo, osheshi oyo efyo, laalushe lokomwenyo.

Onde mu shangela nohole yange aishe, nandi shi shii mOwambo omu na ootate noomeme novamwameme. Ofye oshiwana shimwe nande tu li koilongo.

Gevangenis Hardap
Mariental

Va hombolifwa

Leopold Muatondange, Ondobe, o-va hombolifwa nomuhakuli Rauna Shikukumwa, meongalo Omundau- ngilo. Inave lihombolifa vo vene, aye, ova hombolifwa kongerki pa- veta. Rauna okwa dalelwa mOhai- ngu, Eenhana 1940. A tekulwa ko- vafikameni vaye Sakaria Tuhadeni, ovo ve mu twala kuKristus.

Ofikola yOshoondaha, oya li ya fimana kuye. Omuti wa kula u li poshivelo shongerki yeEenhana, o- mupapa, omo meme Beata Teodor, e va longela eendjovo daKalunga nomaimbilo mawa. Omuti ou wa ninga efano momwenyo waRauna. Ongerki yaye mehistoli laye nolou- nona vaye nge te va pewa.

Ofikola ei kakwa li hai dimbuka diva. Meme Paulina Nghipunya, o- kwa li he mu pe okakola koshikundu, nomungome, opo a hange pexulilo lofikola. Efimbo nande la li lile, li dule eenghono dounona, ola xupipi- kwa koshikundu nokomungome. Tu tye, ovakulunhu ava, ove shii oku tekulila ounona ouhamba waKalun- ga.

“Ouhamba waKalunga owaava ve li ngounona.”

Meme Rauna okwa hovela ofiko- la yokaumbo 1955-56 mOmundau- ngilo. Mo-1957 a twikila kEngela. Pefimbo olo eshi kwa li e na eedula 19 ile 20, okwa tumwa manga ko- seminali kOkahao, eedula ngenge da wana, opo a ka twikile kOnandjokwe. Ova ile ko 10, ve na elalakano eli.

Konima yefimbo lixupi, Oshipa- ngelo shaNandjokwe osha pya po komundilo. Omukumo waye woku- ninga omupangi wa kana. Ye ka li nee e na eifano li lili, nde okuni- nge ashike omupangi. Okwa diladi- la pamwe neifano laye ola pya po. Omulongi wavo meme Lokka, e va twa omukumo.

“Kalunga iha nyengwa kusha.” Okwa holola efiku limwe moshivike

OWE SHI KONEKA TUU?

Onye ookaume ovashamane, omwa koneka tuu oshiponga eshi kutya, ngenge to di me- mbo loye u ka konge oilonga, oumaliwa aveshe oho va kombo mo filu. Omukuluka- di nounona voye ngenge ova hangika nande koshiponga tashi va twalifa moshihakulilo, nokashipenifa oko ngo itava mono mo. Omu- kulukadi oha ka londelela nee kokaanda, a kufe mo oulya opo a ka fute nayo, fimbo ove u li oku to danene oimaliwa.

Inamu hepeka vali ovakulukadi veni nee- nghedi da tya ngaha. Omunhu e dulike va- li nokwaava ihava i kOushimba?

Teofilus Shindjoba

ku ningwe eilikano pamwe nouka- dona ovo omulongo, omo mu na Rauna, ovo ve na eifano mouhaku- li. Ngashi va dimbuluka kutya o- shiwana shaKalunga tashi vele, ne- na olutu lwaKristus, olo naanaa tali vele. Luk.10:33-34.

Mo-1959, Rauna wetu Omwene e mu ifanena mo mofikola oyo yo- vahakuli mOnandjokwe. Nande ha- va tutu eedopi omolwomatungo, molwoshiponga shomundilo, ou wa li wa nyonauna po oshihakulilo, Rauna wetu ke udite oudjuu washa. Okwa itavela alushe ngaha; Oshi- pangelo otashi pu okutungwa nena. Osho a diladila alushe.

Eti-28.2.1962, Rauna a xulifa po ofikola yaye. Omwene e mu ifana a ka longe mEenhana fiyo 1966. Opo a tumwa koKavango meonga- lo lipe Mpungu. Naakwinya omo- lwamalaria ihapu nande ina kala noukolele, a itavela okuyakula olu- tu laKristus tali vele. Meekulu E- lomää, omutumwa ou kwa li tava longo naye, okwa li yo a nghundi- pala unene e mu dule, nde mokuu- ya kwaye moilonga efiku keshe, o- kwa hafa. Eshi sha nyatipaleka me- me Rauna moilonga yaye, osheshi ina tala vali oungone waye. Rauna okwa li e shi okutala oihopaenenwa oyo i shi okukwafa omunashilonga paifano lOmwene.

Mo-1967 okwa shuna kOwambo e na oupuna uhapu pashilonga. O- kumona shihapu ohaku hapupaleke eendunge. Eshi ta alukile kOwambo, okwa li e na omukumo, osheshi aa- menwa moikungulu ye mu shakene- ka penya. Ye ta dimbuluka oshilo- nga eshi oshi na mwene ou te shi popile.

“Mounyuni omu na oudjuu, nde- lene inamu tila, aame nda finda

INASHI WAPALA MBELA?

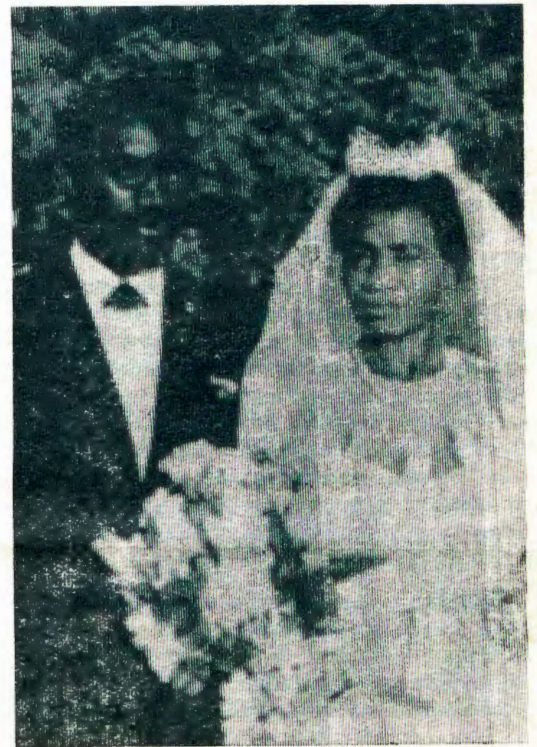
Omufimanekwa,

Ohandi indile ngenge osha wapala okuya momakutwi ovaleshi aveshe vOmwetu ku- tya: Pa kale ngenge epitikilo lomunyasha omunafikola ngenge a punduka, unene ou- kadona, nande a ninga ngaha edimo, pa kale epitikilo opo ngenge a kwatunuka, ye a twikile ngaho ofikola yaye.

Osheshi ondi wete ovamati havahapu iha- va hombola pamukalo oo. Ngenge ongahe- nya ngo, omumati oha tameke ashike oku mu futa, ile okufaduka po, u ude oye winya kOmaruru. Nena okakadona oko ka li ke na okushanga ekonakono losees, pofikola a te- wa po va li. Ondi udite omunhu ou oku li pajfe moluhepo, osheshi ngenge pa tongwa oilonga i li poima, itai po.

Venya ova hala ava ve na ombapila yo- ngudu yasha. Hano nande tava punduka, nava kwafwe ngaho, osheshi ounyuni ou tu li muwo owomunhu te lilongele mwene. Ta- ngi unene, ohandi mu kundu amushe.

Johannes Petrus.



Leopold Muatondange nomufuko waye

ounyuni.” Mo-1968 meme Rauna okwa hovela oilonga mEngela, mo- shihakulilo, omo a kala fiyo 1970 eshi a hombolwa. Okwa nangekwa moshihakulilo shaNdobe, meongalo omo mu na omumati waye. Efiku a lekelwa mEngela, okwa lekelifwa neendjovo daKalunga moxungi inya yaxuuninwa, odo di kale ouyelele mehombolo lavo nomoilongatumo te ke i longa kOndobe.

Omufitaongalo Josia Mufeti, o- mudiakoni woshipangelo Simon Na- munyekwa, ovahakuli vakwao no- vanyasha, ovo ve mu lekela noku- manga oipandi yomayambeko a ye nao.

Omukulunhu woshipangelo okwa pula omumati waye ngeenge Rauna ota twikile tuu eyakulo moshihaku- lilo shaNdobe, nde okwa nyamuku- la; “Heeno.”

Omumati ou ohatu mu pandula, osheshi oye a nangeka tete omuka- di moilonga meongalo lavo, a ya- kule eongalo nomoshihakulilo sha- vo. Omumati ou oku shii okukonga.

Rauna okwa kala omuwiliki wo- vanyasha mEngela, nde ihatu mane oku mu hokolola. Oye omuduliki. Omwene okwe mu longifa moshi- wana shetu, fiyo e mu fila onghenda e mu pa omukwafi waye.

Omukwanyama ta ti: Wililili! e- hee, ondema i dule ooina! Opa sha- ngwa, “Kape na ou te likufile, oku- ninga ta pewa.” Meme Rauna, opo wa longa, ovanhu otave ku dimbu- lukwa.

Tate Leopold nameme Rauna, fye otwe mu nangeka mOndobe ngova- diyakoni.

Malakia Hcuuanga

Opaasa kEtoto

Ongula yeti-10.4.1971, osheendo shovatu-mwa 13 mewiliko laTate Matti Seppälä, osha fikama okuka talela po epya letumo kEtoto. Mosheendo eshi omwa li ovaenda va dile kuS.A., osho yo kuSwakopmund, a-va va li va talela po eumbo lovakwaSeppälä, nova hala okukala pamwe nafye mo-shivilo shapaasa.

Otwa ya pamwe navo okudana mondjila ei. Omatungo mape mofikola yaNgwediva, otwe a tala eshi a wapala, nokwa ulikila nge ngehe Kalunga a yandja komunhu eendunge okulonga nounghulungu nokuwapa-leka eshito. Ewapalo linya tali tu dimbulu-kifa yo ewapalo lomeulu olo inali ningwa noma-ke. MOshakati twa talela po ongerki omo mu na omafano e tu udifila kutya ekulilo la lo-nga wa la pwa kuGolgata. Ongerki yoovene ye tu longa okukala melixupipiko.

PoNakayale otwa pitula po omutumwa u-mwe omupangi noshipakete shomiti, opo tu ka hakule nomalutu yo. Konima yokafudo kanini twa twikila ondjila yetu tu ka fike kuyela nokukala moxungi pamwe nOvatoto.

Moxungi ei otwa hovela okulonga ouno-na owiimbilo, nde okwa li va hafa unene. Nde vahapu va pula ashike ouhaku. Ovaku-lunhu inava ongala nawa kwali. Efiku eli la shikula, mefiku lenyumuko, omo twa mona ovapaani vahapu va ongala nawa. Ova udi-filwa, "Kee mo, okwa nyumuka." Okangu-du kovakriste mEtoto, ke tu imbila noku tu kunda nomaimbilo mawa.

Opo konima yelongelokalunga, eshi twa li twa yeululilwa ouhaku wokomwenyo, twa yeululilwa vali ouhaku wokolutu kovapangi vetu. Etalelopo eli ola ya yo fiyo omoma-umbo amwe, ngashi moomwene womuku-nda oo e tu tambula nawa, notwa kunda-fana naye Ondjovo yomwenyo.

Elongelokalunga lOmaandaha, otwe li ni-ngi novamati ovo hava longo mOruana, pOmulonga waKunene. Ondaka ei kutya; "Eteyo oli li po lihapu, ndelene ovalongi o-vanini," inali tu pa ombili eshi twa tala a- she nomesho, eedi daKalunga di li momu- laulu fokofoko. Oshiwana oshi li ko shiha- pu koshi yoidila youlunde woludi keshe, osho yo koshi yomikifi.

Umwe okwa ti kutya, ovakriste ovo va shashwa, ove li ashike vatano, kakele kou- nona. Shiwana shange penduka po u taalele kEtoto. Ohatu pandula unene omweevange- liste Jeremia Sirumbu, ou a yakula nawa metoloko lOsidimba, osho yo meemhu- mbwe dikwao Immanuel Mungungu

"Etokolo olyoshili nolyopaveta"

"Tse oyendji yomoshigwana otatu koleke etokolo lyOmpangu yuuyuni auhe, oshoka otwe shi itaala kutya osha ningwa paushili woveta nopauyuuki welandulathano lyuuthemba womuntu mboka wa nyenge Suid-Afrika oku wu tu gwanithila muSuidwes," osho ongundu yoshigwana shAawambo ya holola koshipala shomukuluntu Ushona Shiimi.

Ongomukuluntu omunene gwepangelo lyAawambo mboka ye vule aaluudhe ayehe mu- Suidwes nongomuyamukuli mokutaneka etokolo ndyoka lya uvithwa eti-21.6, omusimane- kwa Ushona okwa tseyithilwa omatompelo goshigwana ngoka tage shi taambithitha etoko- lo lyuuyuni ngashi taga landula:

- Palandulathano lyokatongotongo, aaluudhe inatu talwa ngashi aantu koshipala sho- veta, ngashi yi na okugamena omuntu.
- Katu na emanguluko lyokuholola omadhiladhilo getu.
- Katu na uuthemba wokunyola
- Katu na oosikola dha gwana, nelongo lyopakatongotongo, otali nkundipaleke eputu- dho lyoshili nuuthemba wiigwana yetu muSuidwes.
- Kape na emanguluko lyokweenda.
- lilonga inayi gwana, mbyoka yi li po otayi kuthwa po kaakwiilongo.
- Oondjambi dhaa na uyuuki otadhi hepeke.
- Omukalo gwokulanda aantu yondhalate, osho olupe luupika notalu yono elago lyoo- ndjokana.

i) ligwana yaSuidwes otayi pangelithwa noonkondo dhopolisi, ko taku tiwa otu na ombi- li. Okufika aantu nomalusheno nomadhengo gahe shi gopantu, otaga pwidhula oshigwana nokuyonagula oondunge dhasho. Osho wo okukwatwa kwomuntu nokweedhililwa ethimbo ele ta hepekwa, ye inaa pulakenwa paveta, katu shi uvite ko.

j) Epangulo lyomuSuidwes kali na uyuuki nolyopakatongotongo.

k) Inatu panda elongo lyasuid-Afrika oku tu tonditha V. V. O., nonando S.A. mwene oku li oshilyo mehanganu ndyoka, onkene otwa kumwa nokuli sho ta ekelehi etokolo lyOmpangu yuuyuni; iigwana ya hangana mbyoka tayi lalakanene uuthemba womuntu.

Omadhiladhilo agehe ngaka ga nyolwa mOshiwambo nomoshimbulu, oga leshelwa omu- kwaniilwa Ushona Shiimi, Ndjayi Komufala Jannie de Wet, Omuwiliki Omukuluntu gwepange- lo S.Lubbe, omunepangelo L. De Waal, aakuluntu yatatu yaapolisi yomOwambo nosho iilyo ayihe iipitithi yoveta yepangelo lyOwambo.

Momadhiladhilonyolwa ngaka omwa hololwa omakotalongo gamwe gehanganu lyaV.V. O, ngashi:

"Ehalo lyoshigwana olyo li na okukala ekota lyoonkondo dhepangelo," na ishewe, "Aantu ayehe oya manguluka noye thike pamwe kokuvalwa mukehe shoka sha gu- ma uuthemba womuntu nesimano lye."

Oshinyolwa shono sha thindikilwa komukwaniilwa Ushona Shiimi, osha hulithwa ngeyi:

"Ehalo lyoshigwana olyo li na okukala ekota lyoonkondo dhepangelo, onkene ehala lyetu lyoshigwana otwa hala li gwanithwe mpaka, tashi ti, oshigwana osha panda **Etokolo lyO- mpangu yuuyuni.**

Eti-28. 6. 1971 ongundu yoshigwana shAawambo, oya thikama yi fale omadhiladhilo gayo komukuluntu omunene Ushona Shiimi, kombinga yetokolo lyOmpangu yuuyuni.

"Tse otwa hala okutseyithila epangelo lyaS. A kutya, kali li paveta muSuidwes. Aawa- mbo inatu hala okwiitula momupya mokukala kohi yepangelo lyaS.A., ndyoka kaali li pa- veta.

Ongundu ndjika ya pulakenwa ehokololo lyayo mohofa yaNdangwa, omusimanekwa Usho- na okwa li a nyengwa oku yi taamba, ihe okwa nyengwa wo oku yi pa eyamukulo esiku ndika. Ndjayi Jannie de Wet, ngoka iithanwa kOshakati 32 Km, pamwe naapolisi aatiligane omolwoshinima shika, okwa yamukula omadhiladhilo gamwe nokupopila epangelo lyaS. A. mokatongotongo kalyo, sho a yeleke Ingilanda kutya olya fa nga- shi Ondonga, Frankryk ngashi Uukwanyama nosho tuu.

Moonkundathana ongundu oye ekelehi eyelekanitho ndika kutya itali pumbiwa noitali tsu kumwe. Olyo okukoleka ashike omulandu gwokayoya (okatongotongo). Ongundu oya tala kutya ngele S. A. ota tala kutya eputudho ewanawa, olyopakayoya, ne shi ningile wo Aandowishi Aaingilisa noyo yene Oombulu, ihe hamuNamibia nando.

Pethimbo lyoonkundathana mohofa omwa li wo aantu yalwe mboka ya pulakene.



Konyala omido omulongo tadi ka pita paife eshi evangeli ola hovela okuudika mokati kOvahi- mbu nOvadimba. Paife ovo otava nyengwa okutongola evangeli nexumokomesho olo tali longo yo neenghono mokati kavo. Omwene Jesus nomokati kedundakano, ohe lishiivifa kovanhu vaye.



Elongo

MuGanberra, Australia. omukulu- kadhi Geraldine Brodrick, okwa va- la elongo lyomugoyi ashike yaali, uumati auhe, owa valwa wa sa. Uu- nona mbuka owa valwa mominute 32. Uunona uheyali okwa dhila- dhilwa kutya otatu ka kala nawa, nokehe kamwe oke na onдохотola yako oku ka sila oshimpwiyu. Omu- kulukadhi oku na oomvula 29.

Vahapu ohava pula alushe kutya oita yaVietnam ohai xulu tuu hano? Oita ei yoovene inai xula po, nde eshi tashi xulu eteelelo liwa lokukalamwenyo kwoshiwana osho. Nomivalu edi, oto mono okauyelele kanini okutala eshi tashi ningwa mo.

MuSuid-Vietnam, ovanhu-325,000 ova fya 725,000 ova yehamekwa okudja 1965. Otaku tengenekwa kutya oshititatu shovanhu 27,000,000, sha hala kutya, ovanhu-9,000,000 ove li moupongekwa kave na vali ekwafo.

Suid-VietNam alike oli na ovanhu 6,000,000 vehe na omaumbo, ovafaduki po. Moshilando tuu eshi omu na paife ovanhu 3,000,000, nde ava vehe na omaumbo 700,000 okudja 1962.

Moshilando Cambodia, xwepo kanini eshi pa pita paife odula inashi matukilwa. Omuna ashike ovafadukipo 200,000.

OWAMBO TAIKA YEULULILWA OVAENDA

Okuhovela odula tai uya, Owambo otai ka mona ovatalelipo vahapu ovo ve na ohokwe okutala eshito laKalunga ngashi hava ende moilongo aishe. Eshi osha shiivifwa kuNdjai Komufala, omufimanekwa Jannie de Wet.

Osheshi ovanhu va tya ngaha, ohava pumbwa eenhele dokunangala, dokwoomba nokulila, elongekido loinima ei, ola hovelwa nokuli pewo laRuacana. POshikango napo yo otapa ka tungwa sha, omolwaavo va hala okuya kuAngola. Eenhele da tya ngaha eshi hadi futilwa nokutala oinima ya fimana ngashi ewo ile oinamwenyo tashi pula oimaliwa, okwa tengenekwa kutya, pokati keeranda eemiliona 10 fiyo 15, otadi ka kungulukila moshikefa shoshiwana komudo keshe.

Omushamane de Wet, okwa ti yo kutya Etosha otali kala onhele yoinamwenyo, nde otai kala i li mEpangelo lOwambo, novatalelipo otava dulu okutala omulonga waKunene fiyo eendudu daKaoko.

Oshitukulwa shEtosha osho shi li mepashukilo lEpangelo lOwambo, otamu tungwa eenhele dovalaule ovo va hokwa okutala oinamwenyo.

VA FILA MELIDEULO

Suid-Afrika oshivilo shaye shOrepublika, okwa kala te shi lilongekidile neulikilo lomatanga ovakwaita momhepo nopedu. Melongekido lomomhepo omwa nyonaukila eedila nhatu, omo mwa fila ovakwaita 11. Ava otaku tiwa kutya okwa li omanyakwa momatanga oita yaS.A. Omolwetwitwiya lihapu la li ko fiku olo, eedila ode lidenga mondudu nada hanauka po.

Mowambo yo oshivilo sha danwa nefimanekeko linene kovashamane, ovakulukadi nokounona veefikola. Oilongo aishe oya ongafele mOndonga, pOluno, opo va pelwa elapi lEpangelo lOwambo kuNdjai Komufala Jannie de Wet medina lopresidende yaS.A.

"Republik yaS.A., shi dhimbulukwa kutya, oshilonga shongerki yaKristus kombanda yevi, osho okugalikanena wo aapangeli nomapangelo. Ngashi Ongerki yaELOK itayi pititha po nando Osoondaha yimwe inaayi ku fala koshipala shaKalunga megalikano pamwe naapangeli ayehe, opo u pewe oondunge dhokulela aantu yaKalunga, ombili nuwanawa auhe omuntu te u pumbwa, u pangele mokati kaantu yaKalunga, we ya pwa," osho amushanga omunene gwongerki, Rev. Matias Nhipandulua, a kunda oshituthi medhina lyongerki yaElok. Eengerki dimwe yo mOwambo oda yandjele omakundo ado. Efiku eli ola li eti-31.5. eshi Orepublika yaS.A. ya shakenifa eedula 10 melipangelo layo vene

Epangelo laAmerika eli li li oshitwa shopokati moita ei, okukondjifa pamwe naVietnam lokoumbuwanhu, Vietnam lokoumbanngalanhu, ola ya paife meenghendabala diwa okuxupipika olwoodi omo, eshi la shunifa ovakwaita vahapu koshilongo shavo. Nde nande ongaha eeboma otadi umbilwa kombanda yeemwenyo dounona dovakainhu nodaveshe ovo vehe na sha noita ei. Otaku ti mo -200 oounona, 15 ohava hangika ve lidipaa, oshe shi ova loloka okudiladila oita.

Uhapu owa kanifa ooxe nooina, ile uhapu kave na ooxe eshi va dalwa menyonauko lovakwaita va dja keembinga neembinga, onghe ova fiwa po nokooina. Eehombo oda teka noinadi halika vali, oukaume nekwatafano lomapata ola hanauka. Oukadona womafele omilongo otava fii po omaumbo va ye needolopa omo tava ka shingifa omalutu avo, ve limonene oimaliwa.

Keembinga neembinga doshilongo edu ola nyonauka nai komatenda oita, neenhele dimwe kape na vali fiku nadi ka shuninwa okukalamwenyo kwoshito, oda fya filu.

(Time)

Ohotela yaayehe oya tungwa lwotango o-masiku ngaka pokapale kaJan Smuts, Johannesburg noya egululwa komusamane Hermans Martins, oministeli yiyenditho. Ohotela ya tungithwa nooranda oomiliyona mbali netata, oya dhiladhililwa aayenda ayehe taa ya muJohannesburg, nopwaa na okutalwa oludhi lwasha, naayehe ya yakulwe pwaa na ondjoolola. ligongi wo yaayehe, pahokololo lyomusamane Martins, otayi kala hayi ningilwa moka. Aaluudhe oyendji yomuAfrika oya yakulilwa nale nokuli mohotela ndjoka.

11,200 va lekela omaumbo avo

Ongudu inene yovanyasha 11,200 ovalumenhu muS.A. ova lekela omaumbo avo novamwaina eshi va ya va ka popile oshilongo kovatondi. Aveshe ava ovalideuli. Ongudu ei ya hovela okukalamwenyo kupe, omwenyo ile efyo, oya dja muSuid-Afrika alishe, nde va tukaulilwa oilonga aishe i na ekwatafano neameno loshilongo.



Manga oongoma dhOshikwanyama tadhi dhenge nondanisa yOshiwambo ya tsimika ombundu, lyo elapi lyEpangelo lyOwambo otali dhungwa kombe-po kombanda yomitse dhawo.

ONGERKI YETU

- E L O K** - Die Evangeliese Lutherse Ovambokavango Kerk.
Ongerki onghwaevangeli yopaLutheri mOwambokavango.
- E L K** - Die Evangeliese Lutherse Kerk in Suidwes-Afrika
Ongerki onghwaevangeli yopaLutheri muSuidwes (Ongerki yaRynse Sending Kerk.)
- D E L K** - Die Duitse Evangeliese Lutherse Kerk in Suidwes-Afrika Ongerki yOvandowishi (ovatiliane).
- V E L K S W A** - Die Verenigde Evangeliese Lutherse Kerk in SWA
tashi ti Ongerki ya hangana yEvangeli paLuther muSWA.
(O H E L S W A)

MuELOK momudo 1970 mwa li ngaha:

Omaongalo 44 neendjakulwambinga 3 (Onangolo, Uukwandongo na Etunda) neyakulo lovakwaneongalo meedoolopa: Oshakati, Oluno naRundu. Pehovelo lodula 1971 pwa totwa eongalo lipe mOndonga olo Onguta. Momayakulongerki mwa kala ovafitaongalo 85 novaevangeliste 153. Ovandanjambi vakwao ve fike po 886.

Ovakriste momaongalo ve fike po 194. 884, muvo ovalumenhu ve fike po 92. 075 novakainhu ve fike po 102.809. Momudo wa tetekela mwa li mu na ovakriste 186.847. Ehapupalo lovakriste li fike po 8.037.

Ovapaani va shashwa ngaha.

mOndonga 568 (mOnyaanya 121)
mOukwanyama 785 (mEndola 126)
mOuninginino 1177 (mOkahao 232)
muKavango 197 muMpungu 97
Aveshe kumwe 2727

Eefikola dOshoondaha 615 nounona mudo 23.063.

Eengudu dovanyasha 102 (momudo 1969 96) novanyasha va ongala ve fike po 5288. (1969 5884).

Eengudumbibeli 630 (1969 615) va ongala mudo 14. 354.

Eenhele domaudifo 229.

Omahombolifo 815

Ovakondwa 147 novatembulwa 139.

Ovo va pitikilwa okuya kOuvalelo Uyapuki 72. 737.

mOnayena mu na ovakriste 10. 913. Olo eongalo linene li dule omaongalo aeshe mongerki yetu. Ndelene ovakolekwa vanini unene ve fike po 2140. Tashi ti 8.773 inava kolekwa nde kave na epitikilo lokuya kOuvalelo Uyapuki.

mEndola mu na ovakriste 5. 297. Ovo ve na epitikilo lokuya KOuvalelo Uyapuki ve fike po 3.203. Oshixupe 2094 inava kolekwa.

Ounona vovakriste va shashwa ve fike 6.637.

Ovo va ongala meefikola domakoleko 3.107, muvo mwa kolekwa ve fike 3.024.

Eengudumbibeli: Onangalo 35, Ontananga naElim 30

Eefikola dOshoondaha: Okahao 49 nomwa ongala ounona 1.627.

Onangalo 32 nomwa ongala ounona 1.796.

Mateus 16:18: "Nangame wo tandi ku lombwele: Ongoye Petrus, nokemanya tuu ndika tandi tungile po egongalo lyandje, noitali ka sindwa nokomiyelo dhoheli." Efesi 2:19-22.

Pavalulo lomuyakuli wovayakuliongalo mongerki aishe,

Toivo Pentikainen.

ONDA TEGA O MUWA I ILE NDJE

Omulongi Lasarus Simeon Haitembu okwa thigi po ethingwavi ndika eti-22: 5:71, konima yuuwehamwe wethimbo ele

Okwa valwa 1935, mOmbalantu, omuyakuli omunene gwakuluntu naamwayina. Mo-1957, okwa tameke omumvo gwotango gwelongekidho lyoseminali. 1958 omo a tameke ihe oseminali mOngwediva, moka a piti 1960.

Miipundi uule woovula ne, okwa holola oye ependa mokutseya ohapu yaKalunga. Omulongi gwetu Eero Hatakka, motundi yOmbimbeli, ota tumbula, Lasarus. Oshikaha sha Lasarus ihashi lala koshitaafula.

Meme Rauha Voipio, ngoka a li ha longo ehistoli lyongerki, olwindji Lasarus okwa tu mbulwa nando ina ganeka, ngele pe na sha

she tu nyenge. Molwiimbo omulongi Abraham Njambali, a tula Lasarus komawi gata-tu, okuyakula motango, otenuli nomewi etiyali. Ewi lye olya fa ongendjo.

Komatango aluhe oku na Ombimbeli pamwe nomambo galwe gokwiilonga. Oye nokuume ke yamwe, oya kala nehala lyegalikano lya gama kuuzilo waNgwediva momwandi pehekevi nokwiilongela mpoka.

Sho twali hatu dheulwa okuwilika miingongi yaagundjuka, Lasarus okwa ulike uupenda nomagano gokutopola ohapu yaKristus maagundjuka nomaanona. Oonzapo twe dhi pelwe 1960, yaLasarus oyo yimwe yaandhoka tathi ulike uupenda nuunkulungu wokutopola ohapu yaKalunga.

Oshilonga shuulongi okwe shi tameke mii-



Nakusa Lasarus Haitembu

pundi yahe Simeon, mUukwandongo. Konima yomimvo 6, okwa galukile Aambalantu, nokwa ulike kutya okuyakula oshigwana sha Kalunga, kaku na okatongotongo, sho a ka longa mosikola yaAakatolika, puAnamulenge. Ohole yoshigwana oye mu ulukile: Taagulukila hwiya, u kwathe.

Ano oye gwotango mOmbalantu a tula uukumwe pokati koosikola dhevangeli noKatolika noshwo wo maalongi. Ohole ihayi tongola. Mombete yuuwehame ina kanitha ombili.

Sho nda popi naye lwaali, e li muunkundi wethimbo ele, ando ta eta elimbililo, ota nyanyukwa nokuyola. Lwotango onde mu pula nkene uuvite, nokwa yamukula:

"O nda tegelela Omuwa gwandje."

Olutiyali natango sho twa popi naye, okwa yamukula;

"Onda tegelela Omukulili gwandje a ile ndje." Osho konima ndu uvu Omukulili gwe e mu ile po manga e li moshipangelo mOshikuku. Okwa li omunambili.

Okwa thigi po omuselekadhi naanona ye yane. Kalunga ne ya talaleke nayo wo ya ka hulithe niitya mbi: Onda tega Omuwa gwandje a ile ndje.

*Omulongwa omukwawo nokuume ke,
Erkki Moses*

OMUKWETU

Oshifo shOngerki onkwaevangeli paLuther yomOwambokavango
Die Nuusblad van die Evangeliese Lutherse Ovambokavangokerk
Oha zi mOniipa,
Omukuluntu gwoshifo/Hoofredakteur Omumbisofi Dr. Leonard Auala,
Amushanga/redakteur Sebulon Ekandjo
Ondando komumvo mOwambo 70c kUushimba noKavango 90c
Kombanda yomafuta R1. 30.
Oondando nomambestelo naga tumwe kOmukwetu,
Oniipa, P/B. 2015, Ondangwa, S. W. A.
Oshinyolwa shuule

wondeimi	1	otashi futilwa	R1.00
oondeimi	2	"-"	R1.90
oondeimi	3	"-"	R2.70
oondeimi	4	"-"	R3.40
oondeimi	5	"-"	R5.00

Oto vulu okutuma efano lyaashoka wa hala shi tseyithwe nomatumbulo wo gasha ngele ope na.

The Finnish Mission Press Oniipa
P/B 2015, Ondangwa, S. W. A.