

OMUKWETU

Registered at the General Post Office as a Newspaper



Ovakulunhu nava kale mumwe nounona

Efimbo lopaife otali fininike pu kale epingafano nouteku mukulu wOshiwambo eshi okaana ihaka lile mumwe naxe, ihaka nu oshikundu shaxe, ihaka li ombelela yaxa ko ihaka kala omutumba apa pe na ovakulunhu. Osha li shiwa nosha likola oiimati yasho.

Nde omolwefimbo lopaife omukunhu keshe na diladile ye ne luufe konghedi yoshinana nande kai mo mohonde yaye, a tale okaana kaye nefimaneko linene shi dulife shito. Ovadali momaumbo nava monene mo ounona vavo onhele yokuhafifa, yokutulukumkifa noyokuyandja eliudo liwa kokaana, kutya oke li meumbo lavo.

Ngenge hasho, ounona kondje otava tambulwa kovapwidi nde tave va longifa, tave va heke nde tave va hongafa vaha hokwe vali omhepo yomeumbo. Ovawiliki vovanyasha nava tale nhumbi tava kala novanyasha vavo, mokukoneka osho tashi kwafa omunyasha wopaife moku mu tekula.

Ovafita nava shile ovanhu neenghedi davo nde nava kale novaevangeliste ngashi ovamwaina, ovalongi novapangi ngashi omunhu ta kala noinhibu yolutu laye, ovakwaneongalo ngaashi eedi daye.

Omolwefimbo lopaife nomesho yaaveshe, nomalai, a dja moipuvo, eshi tashi ningilwa ou, nashi ningilwe yo naawinya. Ponhele tapa yakulilwa ou napu yakulilwe yo naawinya inaku talika olyelye ile okwa tya ngahelipi.

Onghalafano yopaife noyopamhepo oya shita oikilikiti ihapu nomatongoko mahapu meengudu neengudu, nde osha tandavelifa yo nodinokalunga. Keshe omukulunhu na kondjife ongheidi, "yakala apa fimbo ame handi kala penya, lya eshi fimbo handi ka lya shinya ile handi ka lila penya, nangala apa fimbo handi ka nangala penya," opo eshekokalunga li xupipale unene meyakulo lopamhepo.

Omolwefimbo lopaife eengudu dopedu omhepo yavo tai lixwena nokulidina, osha pumbiwa unene ovanashilonga novaviyauki aveshe va tambule ovanhu va tya ngaha mongudu yavo, opo navo yo ve litale kutya ovanhu va pumbiwa lela, hangenge ashike ovanenenhu ve shi hala. Sha hala kutya, vahapu ove shi itavela muvo vene kutya mokati kovanhuhu ove li mo ashike ngenge ovafimani ove shi hala, otava dulu oku va kufa mo keshe efimbo ve shi hala. Omhumbwe yelitalifo ei i li mukeshu umwe nai fimanekwe. Eshi osho oufemba wokukalamwenyo kwomunhu hau popiwa.

Oontokolwa dhepangelongerki

1. Epangelongerki lya lesa nepandulo ombilive yaPreses Diehl ta tseyitha, nkene aamwame-me yOngerki ya D E L K ya tokola eti-11. 12, 1970 okulonga pamwe natse moshilonga shopambepo mokati kiilyo yOngerki yetu mehalakano mUushimba. Noya tokola okukala haa gongele iimaliwa yokukwatha ombinga yomoondjambi dhaanashilonga mpeyaka.

2. Epangelongerki otali pandula Epangelotumo sho lya gandja omutumwa omusita P. Toivanen a kale omuyakuli gwaevangeliste yomUushimba nomusilishimpwiyu gwoshilonga shopambepo mokati kaamati yOngerki yetu mUushimba peha lyaPauli Laukkanen ngo ta ka fudha po kuSoomi.

3. Epangelongerki lya lesa nepandulo etseyitho lyomukuluntu gwosekundoskola kOshigambo, kutya aalongwa 26 mboka ya nyolele oJuniolo omumvo gwa yi, 1970, ayehe oya pita. Osho wo aalongwa 4 mboka ya nyolele oMatrika yatatu oya pita. Epangelongerki otali pandula omukalo gwokulonga sho tagu kwatha ngeyi nawa aagundjuka.

4. Epangelongerki lya zimine eindilo lyomwevangeliste Martin Shambo nekoleko lyelelongalo Okaku M. Shambo a ye moshilongatumo; nokwa langekwa moshilongatumo kEunda, ye a tameke iilonga ye mpeyaka eti-1 Apilill 1971.

5. Omolwomapulo ga holoka kombinga yomalweendo gokuya kiigongi yi ili noyi ili mbyoka tayi hiywa omolwokuhwameka omagongalo momwenyo gwopambepo; ngashi iigongi yomalwiimbo noyaayakuligongalo yalwe, Epangelongerki otali dhimbulutha omagongalo naasita ya hwameke iilyo yomagongalo kiigongi ya endithwe ngaa komagongalo go gene mokwiinekelala omagongalo tage etelwa uyamba tau zi miigongi ya tya ngaaka.

6. Epangelongerki lya taamba nepandulo oshitumulongo shiihohela yehangano lyaMeling shomumvo 1970 shoka sha tuminwa oshikethatumo shaasita kehanganano ndika, R108. Kalunga na pandulwe sho ha penduthile oshilongatumo ookuume.

OINIMA ITATU OYO JOSEF A DIMBULUKWA

Josef okwa findana ngahelipi momamakelo, eshi a yelekwa komukainhu waPotifara? Okwa li a dimbulukwa oinima ei:

a) Omhango yaKalunga oyo ya li inai hala ekako

b) A dulika koshipango oshitine, ina hala okunyokoma omwene waye, naKalunga

c) Elivangeka, ina hala vali okukala pomuhongololi waye, okwe mu faduka po Omukriste ta longo ngaha, ita kala nekako lasha komwenyo. Ngashi Kalunga a kala pamwe naJosef mokukalamwenyo kwaye akushe, osho yo ta kala pamwe nakeshe umwe ou ta hepekwa mepuko nokutokollelwa mepuko.

Cornelius M. Nghishihange

RHODESIA TA KA ENDAFANA NAS.W.A.

Osheendo shovakulunhu 40 osha dja muRhodesia she uya mOvenduka, opo va kundafane novakulunhu vaamu ngenge tashi dulika ku ningwe ekwatafano londjila yomomhepo la yukilila. Fiyo opaapa olweendo lodila yaSuidwes, okuya mokati kaAfrika, ola pitila ashike muJohannesburg.

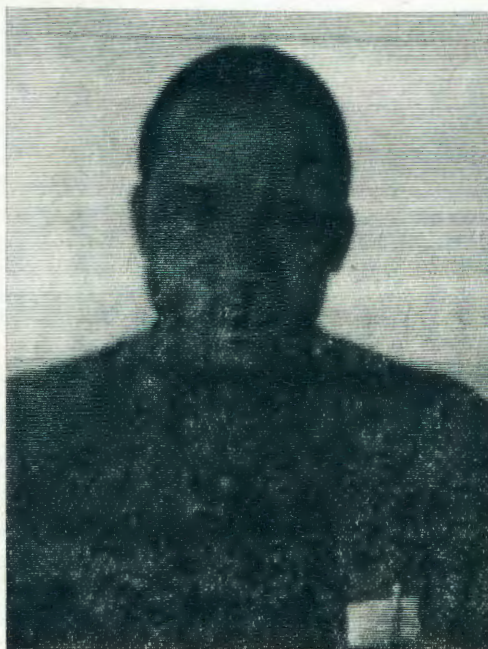
Mosheendo eshi omu na oministeli ikulu yondalashipota Brigadier A.Dunlop, omuwiliki wavo. Omu na yo ovanangeshefa, ovapolitika novanambeleva veembeleva domapashiono. Omadiladilo aa nomuSuidwes okwa hafelwa unene.

OU SHI MO TU MEDIVA?

Ediva linene li yadi ndoondo oiwana. Opo ku udafanwe shapo otaku tolokwa. Mu na Nangando ha dana eendanisha, mo mu na yo Kamati ha denge nawa omeva kemanya. Aveshe ove na oipandeko to xutula oshiwana, oye omuwiliki, ngenge omhata ila u pule Haufiku iha kofa. Ha yepa nawa eembele, nokandenge kaye Shinipuka, ngenge to va tale opomutima ashike u likwete, tava shate po eemhedi, nomiya tava naele.

Ai, mupya munene Ediva kali kanghamwa, nomukulu wonale okwe shi totele. Kali longwa mwedi mbali, omutitatu oto lekele. Otu li ngaho ofika hatu kunu evangeli louhamba waKalunga. Ovapaani otali va kwata ngaho keemwenyo. Yeluleni omake pombada.

Johannes Hishoono



Ev. Johannes Hishoono

Etungo tali thikama tuu lyaa na emanya lyokekuvu?

1Petr.2:4-9

Emanya lyokekuvu olyo emanya lyokoshihoko nenge lyokomutse gwongulu. Pamutungilo gwongashingeyi ohali ithanwa emanya lyokolonela. Emanya ndika oli na oshilonga li vule omamanya agehe mukukoleka etungo. Oshilonga she manya ndika osha fa shokayalitho kondunda yOshiwambo.

Ihe mpaka motekisti otaku popiwa etungo lyopambepo. Aakriste oyo omamanya ge na omwenyo metungo ndika, naKristus oye emanya lyokomutse. Mpoka Kristus a ekelwahi, emanya lyokomutse

olye ekelwahi.

Paulus Omuyapostoli ota longitha iitya; "One olutu lwaKristus," nenge one otempeli yaKalunga. Aakriste kaye shi omamanya ga kuthwa koondundu, ihe oyo omamanya gopambepo. Omukriste gumwe awike oku na oshilonga oshinene metungogumbo ndika lyopambepo.

Nale omwa li aadhinwa, aantu yokohi yoompadhi, dhakehe omuntu, ihe ngashingeyi one oshigwana sha hogololwa. Ehogololo ndika itali ti ando ongashi oshigwana shAawambo, shi kale sha hogololwa mokati kiigwana yilwe. Oshigwana sha

hogololwa osho ongundu yaakriste ayehe yomiigwana omalaka agehe. Oyo wo ongundu yaapristeli yomukwaniilwa Kristus ongaayakuli ye.

Muuyuuda aapristeli ohaa yamba omayambo guutana noonzi, ihe Kristus okwi igandja ye mwene kuGol-gata meso, a ninge eyambo lya hokiwa kuKalunga omolwoondjo dhaantu ayehe.

Okutaamba Kristus otashi ti okutaamba ehupitho, ihe oku mu ekelahi otashi ti eso, okusa. Onke ano itungileni mo mu ninge megumbo lyaKalunga li na omwenyo.

Eino Amaambo



Omukriste kehe oye omutungingulu gwopambepo pamagano e ga pewa. Paulus ta ti: kehe gumwe na tale-ano nkene ta tungile mo iitungitha ye.

OSHILONGA SHONGERKI MURUSIA

Uukriste otau dhimbululwa natango muRusia kutya otau tana, nonando omahepeko natango opo ge li. Shika osha zi mehokolo lyiilonga yongerki 1960-1970 moshilongo shoka.

; Otaku ti aagundjuka oya hokwa unene iinima yopakriste, nopomahala mpoka ongerki itaayi monika manga ope na ekwatho lyoofelani aakatolika mboka taa kwatha uunona komikalo dhi ili nodhi ili miinima yopakriste.

Ehokololo olya tsikile tali ti, aakatolika mboka muRusia itaa hepekela ashike ando eitaalo lyawo lya kola, ihe nomolwekwatathano wo lyawo nooitaali yomuuyuni. Mo-

shilando shaLituanina moka aasita yaali ya kuthwa miilonga noye edhililwa mondholongo, molwashoka ya tamanekele epangelo okwiitula miinima yongerki, otaku tiwa omwaalugwa yalulwa gwaakriste momalongelokalunga otagu tana aluhe.

Southern Cross

Omufitaongalo Gerson Max oo a kala eehani 8 mOsoomi, okwa aluka paife nokwa twikila oshilonga shaye shomokati kovamati novashamane mehalakano mOushimba. Okwa talela po eenhanda dihapu dovanyasha muSoomi, no-kwe tu etela omakundo mahapu. Kwinya okwa hokolola oshilonga mokati kovanyasha, unene vomehalakano noshelinyengifa eemwenyo dihapu dOvasoomi.



Omusamane Gerson Max

ELALO LYOMUKWANIILWA MONDONGA



Komufala De Wet, ota zaleke omukwaniilwa onguwo yongwe komapepe yo nomusamane H. D. Namuhuja

Aantu ye vule 3000 oya zile koombinga adhihe dhoshilongo shaNdonga noya gongalele pombelewa yoshilongo melangeko lyomukwaniilwa omupe Filemon Shuumbwa Elifas. Eti-5. 3. 1971 omukwaniilwa Filemon okwa zalekwa okalinga komunwe gwe kuhe Elifas Shindondola nonguwo yongwe komapepe ge kuNdjayi Komufala Jannie de Wet.



Omuwiliki gwepangelo lyOwambo S. Lubbe ngoka e ya peha lyomusamane Du Preez, ota gandja omakundo ge peha lyomukwaniilwa Ushona Shiimi

Omulonga gwaKavango otagu ka popolwa

Oshifo shoshiherero "Ombuze," osha popya kutya ominino dhomeya otadhi ka za mo-kavango nokufala omeya kOvenduka nopuushiinda wayo. Ilonga mbika okwa tengenekwa otayi ka tameka 1975, notayi ka pula oomiliyona R60, moshinano shoomaila 500. Ngika otayi ka pwa 1980.

Melangeko ndika manga omukwaniilwa inaa pewa oonkondo dhelelo lyoshilongo paveta yaS.A., Ndjayi De Wet okwa adhika e mu lombwele a ti:

"Ope na omayoka ogendji nomOwambo wo, ihe ongomwiliki guuyuuki moshigwana, kala wa sa oshimpwiyu u tale shono tashi yono ombili."

Komufala omunene gwaaludhe muS.W.A. Jannie de Wet okwa tala kutya omuputudhi omwaanawa gwoshigwana haye ngoka a pandika kaantu sho itaa geele. Okwa ti kutya okulalakanena uwanawa waayehe, eyono lyagumwe oli na okugeelwa, nando tashi nyanyudha aantu nenge aawe. Komufala okwa indile oshigwana ashike shaNdonga shi yambidhidhe oshilonga shomukwaniilwa, nokwe shi tala osho tashi ka humitha iilonga ye komeho.

Omukwaniilwa Filemon, okwa adhika a hogololelwa elelo lyoshilongo shaNdonga koshigwana, konima yoomwedhi ne dha piti, omukwaniilwa omukulu Paulus Elifas sho a mana oondjenda dhe. Netsikiloko lyaakwaniilwa mOndonga oyendji oye shi tala nesimaneko enene ngashi elenga Filemon Shilongo e shi tumbula wo kutya;

"Tse otu hole aakwaniilwa, noshe tu nyanyudha sho twe mu pewa ngeyi."

Omuwiliki gwoshituthi omusamane Hans D. Namuhuja, okwa ti:

"Sha tula kumwe Engilanda omukwaniilwa ngoka e li mo, mu kutha mo u tale, nena iihuna otayi longwa. Osho wo tse mpaka tu uvite."

Omukwaniilwa Filemon oye gumwe gwomaakwaniilwa yaNdonga omwiifupipiki, omuvuliki, e hole oohapu dhaKalunga noha kala pudho noku hole aantu ayehe. Oye wo gumwe gwomaakwaniilwa yOwambo ta li iiyimati yeidhidhimiko lye sho kwa li iidhidhimikile oohepo dhosikola kOdimbo nenge mOniipa. Ngashingeyi oha kokota omalaka Oshimbulu nOshiingilisa, ita tolokelwa. Ta leshe ye ta nyola.

Omusamane De Wet, okwa tala kutya oshigwana itashi wilikwa ashike momikalo dhonkalathano, ihe otashi pumbwa wo ewilikalo momukalo gweputudho (opvoedkundig) osho wo gwopashilongo (staatkundig) nongwopalikolo lyasho (ekonomies) Ayihe mbika otayi kala komapepe gomuleli gwoshigwana, nokwe shi inekelelwa ote shi vulu.

"Apehe mpoka a kala po, omahokololo oga adha ndje noga nyanyudha ndje. Oye okwiilholola omuleli omwaanawa mesiloshimpwiyu lyomukunda ngoka nda li nde mupe," osho he Elifas a hokolola okukalamwe-nyo kwomukwaniilwa pafupi.

Oshituthi osha liwe kaanentu yomepangelo lyOwambo. Omuwiliki omukulu gwepangelo lyOwambo Du Preez nomupeha gwe S. Lubbe, ngoka a popitha wo oshituthi medhina lyoshilyo oshikuluntu mongundu yompitithimpangō, omukwaniilwa Ushona Shiimi. Omuwiliki gwelongo F. Gous naye wo omo a li. Omuleli omupe gwomimvo 41, Filemon okwa hala okudhiginina eindilo lyomukwaniilwa Salomo, a pewe oondunge dhokukalathana naantu, nokwa indile oshigwana shi mu yambidhidhe mushika. Okwa hokana noku na aanona yatatu.

Oshituthi shono sha tamekwa negalikano komumbisofi gwongerki yaElok, Dr. Leonard Auala, osha hulithwa wo kuye nelaleko nuuyamba.

Parys

Oongerki dhaKatolika muFulanisa, odha faneke ku ningwe elunduluko miitya yehempululo lyeitaalo. Mefaneko lyiitya mbika nongerki yaKatolika... Mpoka hatu tumbula "negongalo eyapuki lyaakriste ayehe" oya tula ando shi kale ngeyi: "nongerki ayihe, nenge yaayehe" = (universele Kerk) tashi ti ongerki ayihe muuyuni. Shika osha kondjithwa unene kaateologi moshilando shomupapa.

Mombilive yokukondjitha oshinima shika ndjoka ya nyolelwa kaambisofi yomuFulanisa, omwa tiwa; kutya elunduluko ndika otali eta oshipilili momadhiladhilo gaantu sho itaa dhimbulula we kutya otatu hempulula eitaalo lyetu mongerki yimwe ndjoka ya dhikwa kuKristus.

Mongerki moka aakriste otaa kala ongomuntu gumwe nomeitaalo moka omasakramendi omayapuki otaga topolwa kaasita ye shi zimininwa. Omapila oya ti natango kutya efaneko ndyoka otali gandja omadhiladhilo gokwiitaala omaitaalo inaaga yela moongerki ngashi tadhi monika kombanda moka aakriste otaa kala mo nga muukumwe wopambepo nando oyo ye na omayooloko gawo.

Sigo ompaka oongerki muFulanisa ngashi aaprotestante, aakatolika naortodoks, ohaa longitha omalundululo gehempululo lyeitaalo ndika ga yooloka, ihe ompumbwe yefaneko ndika oya li ya dhimbululwa 1968 moongerki dhopakriste ndhoka hadhi longitha Oshifulanisa.

Southern Cross



“Meme Marta, aakiintu ooyakweni sho ya gongala metala muka ye thike mpoka, oya hala oku ku galikanena momutenge gwoye omudhigu nge to yakula egumbo lyoye. Tala ano oshigwana ngashi wa tala omumwoye, noto kala ekwatho lyoshigwana. Oshigwana osha hala u kale nomwenyo omule,” osho omumbisofi Auala a kumike omunyekadhi omukumo moshigongi.

OONKUNDATHANA

“Oshike oshipala shoye sha nika nga uuthigwa, kuku, ou uhala po tu?” osho omugundjukamati a popitha omukulupe ngoka kwa li a gondja momuti gwopooha nokagumbo ke. “Kaana ngweye, mpaka opwe ende aantu oondjimbo dhawo dho opala. Oshihomo sha ka londongela sha yi. Otaa zi te ti koshigongi shaagundjuka. Osho owala sha lundulula ndje shoka, tse aakulupe otu hole omaimbilo.”

“Nguka oye ano, Anesa?”

“Eeno, kuku, oJohannes.”

“Omolwashike ano aadiakoni ye li ko oyendji kOnandjokwe, nde inaa enda wo tuu nomaambo ya imbile aakulupe? Nenge aakulupe ooyakwetu ohaa mono nga omaimbilo walye.”

“Kuku mOnandjokwe kamu na aadiakoni, shila aapangi mboka ye li mo, yo kaye na ihe ethimbo lyokweenda, iilonga yawo oyindji.”

“Ah, Anesa!” omukulupe a yi mo a fa a kanyanana.

Haifa

Eileen Blaiberg, omufiyekadi waDr. Phillip Blaiberg ota ka hombola paife nOmwiisrael weedula 61, Herbert Blum. Meekulu Blaiberg eshi a pulwa ondobwedi yefyo lomulumenhu waye opo ngenyo va hombolifwe sha yela, okwa ti kutya ye omwalikadi womulumenhu a fimana, eembapila odo kadi na oshilonga. Eshi inashi mu mangelula nande, eemangi mbali de keuya odo da ka kufa omakipa pokati keembwa. Nakuhombola naye omunambelewa mepangelo laIsrael.

Elelo ewanawa oli na omayambeko

Omutonatelishitayingerki shaNdonga Rev. Timoteus Shipanga okwa hokolola pafupi ihe osha yela, endjokonona yaakwaniilwa yaNdonga. Unene okwa dhiginine okuulika iiyimati yomayambeko ge etelwa oshigwana kaakwaniilwa yelelo ewanawa sho a ti

“Ondonga oya kala ethimbo ele melelo lyaakwaniilwa nando itaku tseyika naanaa osha tameke peni. Yamwe ya lele oshilongo nuupwidhi, ihe mboka ye shi lele nombili oshe etele oshilongo omayambeko. OmOndonga tatu adha lwotango omukwaniilwa a shashwa, Martin gaKadhikwa, nOsoondaha ya tameke okuyapulwa mOndonga.”

“Epangelo lyopatiligane sho iye ya olye etele aantu uupyakadhi owindji, nosha kanithitha nokuli miilongo yilwe aakwaniilwa. Ihe ukriste waMartin owa kwatha ukwaniilwa womOndonga. Osho wo aatumwa mboka ya mono eha moshilongo, oya ningi ekwatho enene.”

“Ondonga nando ya kala osheelo shokupitila kiilongo ayihe yomOwambo, naakwiilongo oyendji oya kala mo, shika inashi ninga sha moohedhi dhoshilongo. Uuteku owa monika unene momukwaniilwa Shikongo shaKalulu ngoka lombwele aatumwa ya galukile mOndonga ngele taa tidhwa kiilongo yilwe. Osha kwatha aatumwa yalweya landula ko. Oholomende ya mono ishewe omutumba gwayo mpaka mOndonga. Ano ongele etumo ngele oholomende oya longo mOwambo ayihe mokuza mOndonga.”

“MOndonga omukwiilongo okwa dhimbwa ukwiilongo we, ihamu nyengulwa omuntu. Ayehe oyi, inekelelwa iimpwiyu iinene shi thike pamwe Ayihe mbika oya yambekitha oshigwana.

“Nena sho tu li ihe mpano twa koka, komambo itaatu adha ko we, otamu tu ningi ihe ngiini?”

“Otatula ngaa nkene tatu mu kwatha.”

“Ngiiini?”

“Tala, kuku, ngame ndishi ohandi longo kOndangwa, esiku limwe nda piti po nga nde ku pe okapalwa nenge okampunda komakaya.”

“Eeno, nalyo wo ekwatho shili mentu gwandje, ihe matsa tse aakulupe otwa fa uunona, otu hole oondjimbo. Inda nge to yi, kandi uvite sho to ti. Amuhe oko mu li hono koondjugo, aagundjuka oko mu li, aadiakoni mba tu uuvite muuyuni mbuno oko ye li, aakombindjila nenge ohamu ti shike?”

“Aakongindjila!”

“Yaloo, oko ye li, nde to lombwele ndje.”

“Tangi kuku, tokelwii po ano nawa!”

“Eewa, enda po nawa!”

Omumati osho a yi nokulonda ombasikela ye ta dhiladhila oohapu dhomukulupe.

Naftali Naanda

Omukwaniilwa Filemon Elifas, okwa langekwa wo paveta yepangelo lyaS. A. a kale mepangelo lyOwambo, ye a ninge oshilyo mOngundu Ompitithimpango. Ano oye oku li ngashingeyi omini-steli yuuyuki, shoka tashi ti; iinima yomapangulo gaayoni.



Omukwaniilwa Filemon

Kekkonen multalia

“Ekwatathano lyaakwaLuther olyo lya koko mOmbepo ombwanawa tayi nyanyudha okuza koshigongi shongongahangano yaa-kwaLuther muuyuni, shoka sha gongalele muSoomi 1963,” osho Kekkonen, omupresidende gwaSoomi a lombwele omupapa Paulus-VI.

Omuleli gwaSoomi Kekkonen, okwa talela po oshilando shomupapa Vatikan, multalia petameko lyaFebuluali. Mokukoleka oohapu dhe, omupresidende okwa ti: “Onzapo yoshinima shika otayi monika maapopi yomoshigongi shongongahangano oshiti-5, shoka sha gongalele muEvian, mu-Franisa mujuli. 1970. Mpaka ota dhiladhila oshipopiwa shomukatolika Cardinal Jan Wilibrands ngoka a hokololele kutya Martin Luther okwa li omulongeliitaalo lyomuule.

Etalelopo ndika lyomukuluntu gwaSoomi olya li tali ti oshindji multalia.



He yOmukwaniilwa ota hokolola ondjokonona yOmukwaniilwa Filemon.

OLYE ANO NGUKA?

Omumati gwanekandangala lyombandje, kekango te eta omongwa, kiita te eta oongombe. Entu epulangunga lyokUukete naNiilya. Eyima lya za kOnayena tali iyaka megumbo, lya ya inaali laleka. Nkee tuu lya taakana moshiheke shaNampungu tali fudhapo. Momulonga gwaNiiwe lya numo omeya. Omeya kage shi omatoye, tya piti kOndangwa komuhona stationa. Olya ya lyu uka mOnantsi lwokooha dhaNambango, hwiya lwoKonamungundo mEtambo lyaKonisa metale lyaSwanla kuJohannes yaSheepo nokutate Titus. Oko lya pelwa oholo. Pita ye ta ti: Nali ye kundo-hotola li ka kongwe otiimbij nuuvu waakiintu. Pamwe oli na oshinena lyo tali londo mekambamba.

A! membesa lyaSwanla lyu ukilila Uuzilo lya fa lya tala Oniipa hwiya kOnandjokwe, Onamulunga nOshali lye yi polulyo. Ta lyeende pOnathinge nomLihongo yaMvula, Okaonde lye ke enda kolungenge lyu uka ombuga yaNgwali noyakuku Mbolongondjo ta lyeende mOmadhiya gaMutenya naNtinda. Okashana lye ka pe olulyo Onamutuni lye yi ende kUuzilo. Oshikoto lye shi ende puuyanda mowayela dhaShomeya. Oshomeya lye yi ende kuutokelo lyu ukilila Oshaanda shongwe hwiya yakwawo taa yi membiimbili medhila lyaShindiema. Moshaanda omo lya pelwa iilonga tali londo moshikoto meshina lyo dishela mOvenduka tali mwena.

Kovenduka olya tameke iilonga li li nomwiingilisa, nombulu, nomundowishi olya longo etatamwedhi olya futwa ooranda ne noosendi omilongo ntano. Lyo otali thikama lwaampe tali pula oondunge lyo tali shuna. Tali ti komuhona: Omuhona kwatha ndje Opaasa, oshoka ondi na kuku e li kuKatutura, nkee nda zile kOwambo inatu monathana. Omuhona ta ti: Otandi ku pe aluhe opaasa mEtihamano nOsoondaha. Tangi tangi mbaasa gwandje. Eyima lya teya iihulo yaantu Aaherero kumwe nAatakumi, nAakwena yaGochas. Ou li wete tu sho tali taanana mpeya pembesa lyaKatutura. Opo lya adha oontana dhaana yAaherero, kumwe nAatakumi naantu yaRaipota lyo tali thikama lwaampe lya fa aanona aakwawo. Othika yOshiwambolela. Lyo tali popi nOmuhherero nOmukwena gwaApindona tali ti: "Owa kala peni? okuKatutura nenge omOndoropa?" Omutakumi okwa ti: "Ohe zi kuKatutura huno ohandi

ya kiilonga." Lyo tali ti: "Kaandjeni ka ku na omalovu?" "Oko geli." "Ou na iimaliwa?" "Ondi na ooranda ne omasende omilongo ne-nagaali netata." Omanga ye li mondjenda yaKatutura, omutakumi okwa ti: "Ombaa oye eguluka tu ye tu ka kuthe mo muNdjambula momunoko gwaApindona nomokalya kAashawana." Lyo tali ti: "Nasho osha vulika, otandi ku pe oosenda omulongo u ka lande omakopi gaali limwe olyoye limwe olyandje. Tu nwe tse tu ye kegumbo omuholike." Omukwena okwa ti: "Ye tate," Lyo tali ti: "Ye meme omuholike." "Ku na okaranda kamwe nuusenda omilongo mbali." Lyo tali ti: "Ino tila meme gwandje omwedhi opo gwa si ohela, ondi na ooranda ne noosenda omilongo ndatu nambali netata. Tala meme tangotango oto pula omalovu gohevala moshikwena nomandjembele moshiherero, notota ngele opu na tayi kuthwa mokapapi mokakende koWisiki meme omuholike. Okavaina otatu ka nwa kegumbo." U li wete, ou shi sho li li po? Oli na okakuya komitsa kohi yombayikitha, lyi nombele yakoono kohi yiikamusino. Eyima lya zi peni ngeKwambi ngeNgandjera ngeNdonga lyaNangolo ngeKwanyamenena lyi na okakuya noshimbele nohamala yoshilumbu. Entu lyambumbu yamulilo lyaAshipala sha Nakwedhi entu lyaMushindi gwaKantene lyaKashikola kashitenda. Opo li li po, megumbo ndiyaka lyOmushawana lya kuutumba kehale mewalanda lyaKatutura nahemweno Omumashutu tali pulwapulwa iihuna kuhemweno nayinamweno mbeyaka yaaKoosa taku ti: Ngoye ogwaKambonde nenge ogwlipumbu naMandume. Lyo tali ti: "Ogwomuhona Kambonde." Manga inaali hulitha okupopya nomweelo tagu konkola. Ye mwene gwegumbo te gu egulula li tye tuu ngeyi oontana dhaamaluya kumwe nAakurimboyi dho tadhi ti: "Mwa-

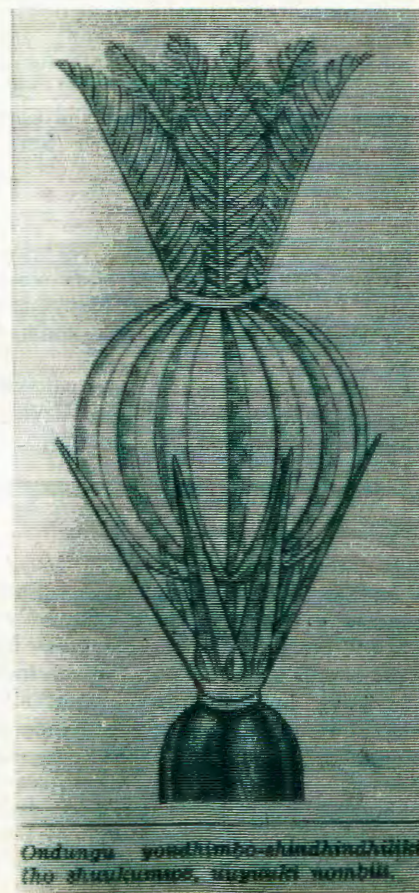
Ondhimbo yeledo lyOwambo oyi li esiku keke koshipala shoshigongi shelelo lyOwambo omasiku ngaka manga ye li momutumba omutine gwetoto lyooveta.

Miikundathanwa iidhigu tayi gumu oshigwana poomwenyo, Ongundu Ompitithimpango oya kuutumba pamwe nOngundu Ontotimpango nokukonakona iinima ooshimwe na shimwe.

Natango ondjila onde okuthika kela-lakano.

tokelwa po," dho tadhi pula mu-kwawo, ye mwene gwegumbo ta ti: "Oku li kelugo kesiga lyokuteleka." Dha piti dha yi kuye kelugo. Opo li li po nomwelo tagu eguluka nani ontana ye yomunalonzi yo tayi ti: "Tate." Ye ta ti: "Ye-meme omuholike." "Yakwetu mbano ya piti mpano owe ya mono? Oye ya ya lombwele ndje uudhano u li kondjugo yokudhanena." "Eeno onde ya mono." "Otatu yi tate nenge oto-kala po." "Otatu yi meme omuholike," "Andiya tu ka zale tu yeni nawa." Omanga ye li mondjila taa yi kuudhano yo ontana otayi ti. "Ye tate," "Ye meme omuholike." Uudhano ohau futulwa. "Iyoo, ohau futwa ngiini." "Uusenda omilongo mbali nuutano auke, ombiliha ndishi." "Otu lye-ni yane." "Oti mu futile amuhe, oshoka ondi na ooranda mbali noosenda omilongo ndatu nambali netata." Ya thiki pomweelo lyo tali ti. "Haloo Miishishi," "Ye ngwiya oosenda omilongo ndatu momuntu gumwe." "O, otu li ya ne kumwe atuhe oranda yimwe nosenda omilongo mbali." Lya futu e taa yi mo. Lyi tye tuu ngeyi aamati ye li yahamano. Aahiki ayehe gumwe oku na enkuma yatatu iiketala gumwe engoma nomukwawo enambati ngandiyaka lyaKankondi kaTimo

Tala kependja tali landula



Ondungu yondhimbo-shindhihulisi-
tho shukumbwe, uugusisi nombili.

Omumwayina gwomupapa a si

Omupapa Paulus VI, muRooma okwa ya-kula oombilive odhindji dhehekeleko dha za koombinga noombinga omolweso lyamumwayina Dr. Francesco Montini, muJanuali.

Dr. Montini omutitatu paamwayina, okwa kala ethimbo ele nuwehamwe womutima, nowo we mu li. Okwa li gwomimvo 70. Omupapa Paulus Montini sho a kundana eso lyamumwayina, okwa yi mongerki a ka ninge emisa. Oombilive odhindji odhe mu hekeleke wo.

Dha za kepanja eti- 6

ngwiyaka ha kala pOndjondjo. Hali hikilwa okakuka nenge omukende gwondjindja, aniwa otombo iha nu ina hala otiimbii.

Olya kuutumba lwaampe. Yoo aahiki taa thikama, okamentu kamwe kenkuma oke li tula komulungu e ta ka ti. Kwikwiiii, kwikwiii, yo yomangoma nomakitala taa ti ngwamu ngwamu..... Tala nduno kiihuna aana yAakoosa kumwe noontana dhaaMashutu naafuko naakuluka-dhi, taa thikama. Oongaku posamende otaku ti ashike tsaya, tsaya kotaku ti owala ngwamu ngwamu. lihuna kanona ngoye aafuko taa thikama taa nuka ya fa oomenye komulonga gwaManetha hwiyyaka lwokOnakalunga Li tye tuu ngeyi kehe gumwe oti imbi yo ya kwata-thana nomukadhona taa dhana. Olya thikama po e tali ka dhana lya kwatathana nomufuko, ihe olya nyengwa okutumbula iitya. Konima olyi ipula tali ti: Nani ngame omunelago sho nda pewa iilonga ku-Johannes yaSheepo yokuya kuKombambisa ndi ye ndi mone uudhano, nkee nda za ndi u mone onda mona ashike onkandangala niipupu kOwambo nomatutula haga dhanwa kuuyanda nenge mepya kiipale, ihe mbuno wa piti.

(tadhi tsikilwa)

Swapo ita kondjifa ehoololo

Ombelewa yaSWAPO muTanzania itai kondjifa ehoololo la fanekwa nola yandjwa mohofa younyuni keehahende daS.A. ngenge otali ende nondjila ei kutya;

Li ningwe shili momhepo yombili nome manguluko ovapolifi vaS.A. ngenge aveshe ova kufwa mo manga moshilongo shaNamibia, eenghwate adishe muNamibia naS.A. edi da tulwa meedolongo molwoupolitika di mangululwe mo, naavo ve li koilngo va alukile keumbo pehe na opalapala yasha, yo onghedi yomaduumbo tai hanaunwa manga, nehoololo otali udifwa nee.

Efaneke eli okwa li tali indile oiwana aishu muS.W.A. yovalaula oyo i tokole yoo-vene kutya oya hala okukala koshi yeembulu, ile ya V. V. O. S W A P O okwa wedako natango ta ti, ehoololo eli ngeno nali ningwe nee mepashukilo laV.V.O voo noiwana ya hangana yaAfrika (O.A.E)

Ushona a hiywa kAaherero

"Tse otwa hala tu kale tu na uuthemba wo-kweenda twa manguluka meni lyevi lyetu, nopwaa na ethiminiko ishewe lyoopaasa," osho omalenga 7 gAaherero ga tumbula moshilongo shawo Waterberg.

Pahapu dhawo aakuluntu mbaka otaa tamaneke noonkondo omukwaniilwa Ushona Shiimi, oshilyo oshikuluntu mepangelo lyOwambo, ngoka a gama kepangelo lyaS.A. mokutopagula iigwana mbika. Oyo oya sa oluhodhi molwepangelo lyoombulu sho tali ya tidha mpoka ya kala shito nokulanditha po omahala gawo kaanafaalama yaatiligane. "Shika osho naanaa uufuthi wowene," ya ti ngawo. Oya hiya omukwaniilwa Ushona a talele po oshilongo shawo Waterberg, osho wo oshilongo shOombaatiili Rehoboth, ihe inaa holola shoka ya hala okukundathana naye.

Aasamane yAaherero otaa kondjitha omukalo gwaatiligane sho yo ayeke ye na uuthemba okutokola sha. Shika nashi ninge shaatiligane naashiyaka shi kale shaaludhe. Oya ti, "Omuntu ita vulu okuya moshilongo ongondjendi yowala nokwiininga omupangeli nomuhona gwokutokolela aavalelwa-mo."

Vahapu muAfrika ova tila vakwao

Ngeno okwa li aame Edward Heath, (omunisteli yotete yaEngland) ngeno S.A. oilwifo ohandi mu pe ashike okudja nena eli, osho Kamuzu Banda, opresidende yaMalawi ya popya.

Moshongalele shovatoolinghundana Banda, okwa ti kutya ye ite lipula naS.A. ile Rhodesia. OvaAfrika ovo tava kondjifa S.A. otave shi ningi mokuha shii sha, osheshi ova tumbula ashike omilombo dovafaduki-ovo ve li muLusaka, naDar-es-Salaam.

Elandifo loilwifo kuSuid-Afrika ola kondjifwa neenghono moshongalele shovapangeli voilongo muSingapoer, nokakomisi koilongo oka hoololwa okukonakona omukanda wetamaneko lasho, ngashi wa etelwa oshongalele kuDr. Kenneth Kaunda waZambia. Okakomisi aka, Dr. Banda ina teelela ko sha kuko. Okwa ti kutya vali okukondjifa elandifo kashi shi oshinima shoshongalele. Vahapu muAfrika ova tumbula paife omadiladilo ange, nde va tila vakwao, onghe itave shi holola poluhaela. KuSingapoer, omushamane Banda oye aeke OmuAfrika kwa li aama kuEngland.

Oveta yeshangifo loshiwana oya etelwa oshongalele shetoto leeveta koministeli yoinima yoshiwana omushamane Silas Thikameni lipumbu, opo ku talike ngenge oi shi okulongifwa ile itai ka wapalela ovanhu. Mokuyelifa efaneke eli, omushamane Silas okwa ti kutya; omolwovanhu vetu vahapu va kana nde katu shii kutya ove li peni fiyo opaife, oukalata tau ka yandjwa melishangifo eli, otau ka mana po omalimbililo aeshe aa, osheshi muwo edina lomunhu otali monika, omukunda wavo, mwene womukunda, nonhele apa a dalelwa, osho yo efano lomutwe waye. Nde Ovawambo aveke manga ve na omhito yelishangifo eli.

Omalongekido neenghundafana molwoshinima eshi oi li po natango. Omufilishisho woinima yoshiwana, omushamane Silas, ke na omalimbililo moshinima eshi, kutya itashi ka eta ouwa moshiwana. Komufala Ndjai Jannie de Wet, naye yo okwa popiia unene omadiladilo aa.

ONDJODHI YONKOLWE

Omumati gumwe onga ngoye tuu ngo A nu omalovu, a nu eta nu.
Osigo a nyengwa okugwedhela ko,
Noomposi dhe mu kwata pethimbo tuu ndyo.

2

Moomposi a lala ondjodhi ngaandjika,
A yaguma nkene moheli ta yi
Eshina kombinzi lya tiligana,
Kolutenda lye endelega lya yi.

3

Miikoto aayenda yu udha tuu ndo
Mothina onenenene ya kuutumba mo.
Aanene naashona aayamba noohepele
lilumbu naaludhe ya vundakana
mumwe.

4

Ayehe melyenge ya kwatelelwa
Nondapo aluhe ya gwedhelwa ko
Noluhodhi aluhe ya indile
Ondeveli kutya ye ethiwe po.

5

Omutondi ta yolo nokuyola shili
Ta popitha aayenda ye taa pi.
Ookuume, olwindji mwa hangela ndje
Mwa gama kungame mwa landula ndje.

6

Miituthi, muunkolwi muholome wo,
Ugundjuka weni wa yonekeka.
Mwi iteka Omushiti nehangano lye,
Mwa gwana mu kale wo nkoka ndi li.

7

Opo mpoka omumati a papudhuka,
A pusha, a tila, a kololokwa.
Nomwenyo aguhe ta galikana,
Kalunga e mu kwathe eitedhululo.

8

Kalunga noku uvu egalikano lye,
Omumati a ningi omwiidhiliki.
Ta longele Omuwa nuudhiginini,
Omulongi nani ota pewa ondjambi ye.
V.Ph. Shikulo

AALUUDHE ITAA VULU IITA

Epangelo lyaatiligane muumbugantu wa-Afrika oli na natango oomvula ntano nenge hamano nokuli lya vululukwa, pahokololo lyaDr. Brian Crozier, omukonakoni gwii-
potha yuuyuni

Omusamane Brian okwa ti kutya iita mbyoka tayi endithwa kaakondjelimanguluko muumbugantu waAfrika, kayi na omupondo gwasha. Oye okwi itaala kutya aalumentu ya dheulilwa iita mbika ya zile maaludhe ngashi muRhodeisa na Mosambikwe, oya nengena noonkondo noitaa vulu iita, nando ye yi longwa muRuslanda. Mokugalukila kuAfrika, oya li ashike ye na okwiigandja kaakwiita yaatiligane.

Brian, omuwiliki gweputudho lyokukonakona omaudhigu giigwana muLondon, oshe mu yelega nawa kutya epangelo lyaSmith, muRhodeisa otali pendutha ngashingeyi uululu moomwenyo dhaantu mboka nau ka tsipuka mo neinyengo enene esiku limwe.

M'Oshinyanyangidho, Oniipa, oto kwathwa nawa.

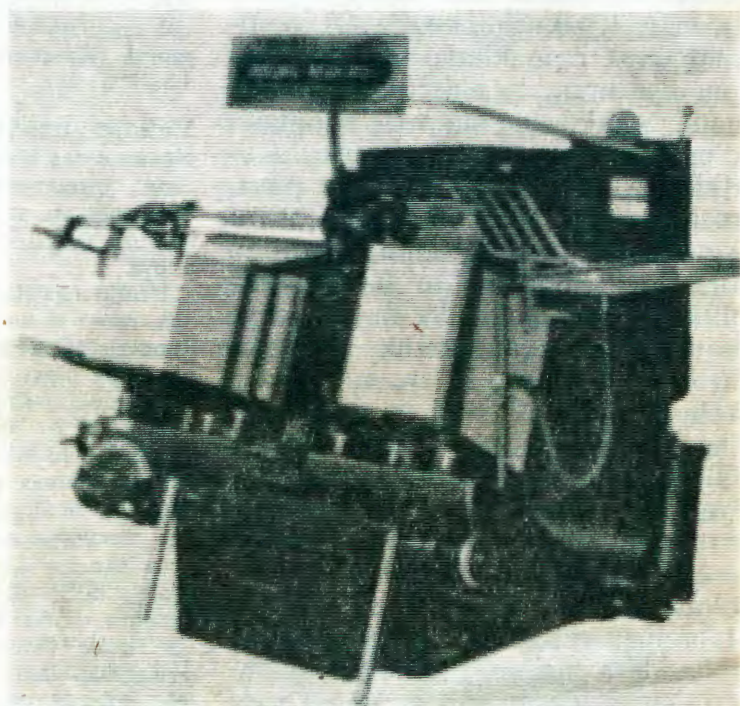
Oshinyanyangidho osha taambele eshina epe lyokunyanyangidha 1968. Ohali nyanyangidha uukalata, oombapila, nohali vulu wo okunyanyangidha kombanda yoompunda dhoombapila. Osha pumbiwa unene momagongalo ga kale ge na oombapila dha nyanyangidhwa ondjukithi dhago.

Osho kaanangeshefa yoshigwana shetu ngele taa inyanyangidhithile oompunda nosho oombapila dhoongeshefa dhawo. Ohashi vulika to landa oompunda dhoje mwene e to indile ku nyanyangidhwe ondjukithi yoye, nenge tatu ku nyanyangidhile nodhetu shimpa ashike to gandja oshiholelwa shoompunda dhodhudi ndoka wa hala.

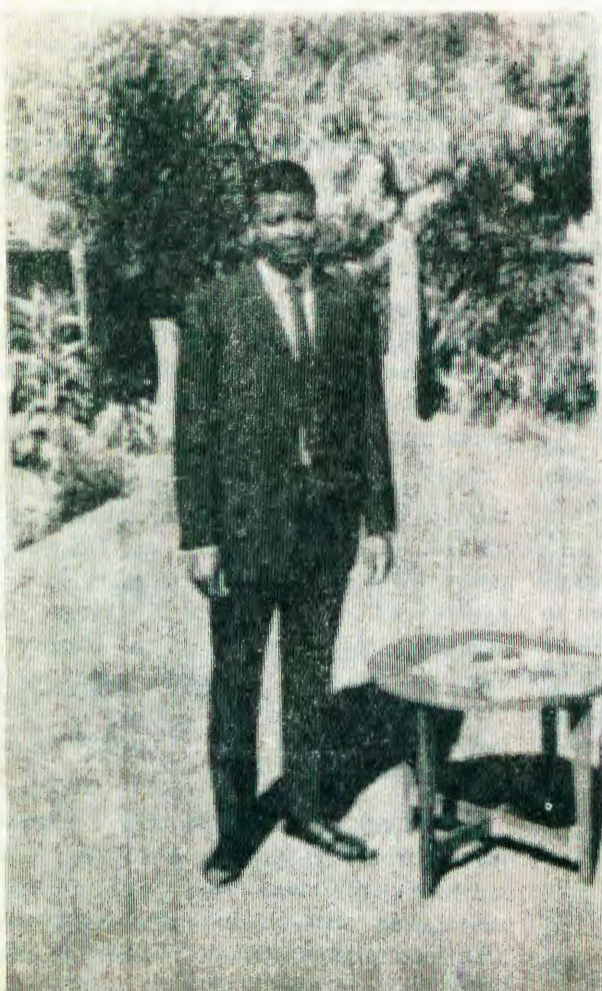
Osho opala wo kaanangeshefa omuntu to kala u na embo lyoye lyongeshefa lya nyanyangidhwa. Uuna to ningi embesitelo lyasha, oto udhitha po owala, ngashi naanaa aanangeshefa yomavi galwe taa ningi. M'Owambo yamweyamwe ayeke sigo oompaka ya nyanyangidhwa omambo gawo noombapila. Eshina ndika ohali nyanyangidha oombapila dhomayuvi ogendji motundi, noli na ombiliha nokulonga kwalyo.



Omunganageshefa Silas Kweyo, oshilongatumo niilonga yasho, ine shi dhiginina ashike m'Owambo Lwopehulilo lyomumvogu, okwa talelepo wo okomboni adhihe dhaLange noondjimbo nomahokololo. Shika osha talaleke oomwenyo odhindji Nethiminiko lyohole yomuKalunga, omuntu oti idhimbwa yemwe opo a yakule omukwawo. Tate Kweyo, ethimbo lyokuhumitha ongeshefa ye komemo ohe li topola wo neyakulitho ndika lyopambepo.



Eshina ndyoka hali nyanyangidha oombapila, uukalata womaludhi gi ili nogi ili noompunda dhoombapila.



Bernhard Nangolo, ngoka ta longo ngashingeyi mehanganano lyomina yokawe muC.D.M, ota tseyitha kwaayehe ye li m'Owambo nomUushimba kutya ye petameko lyaApilili nuumvo, ota ka ya kuHolland, nota ka kala ko uule womvula yimwe netata. Ota yi wo pamwe naatiligane yaali.

Otandi halele wo iilyo ayihe mepangelo lyOwambo ekalopo lyonawa netegameno wo lya kola. Tate Kalunga ngele a hala otandi galukile mbala kune.

OMUKWETU

Oshifo sh'Ongerki onkwaevangeli paLuther yomOwambokavango
Die Nuusblad van die Evangeliese Lutherse Ovambokavangokerk
Oha zi m'Oniipa,
Omukuluntu gwoshifo/Hoofredakteur Omumbisofi Dr. Leonard Auala,
Amushanga/redakteur Sebulon Ekandjo
Ondando komumvo m'Owambo 70c kUushimba noKavango 90c
Kombanda yomafuta R1. 30.
Ondando nomambestelo naga tumwe k'Omukwetu,
Oniipa, P/B. 2015, Ondangwa, S. W. A.
Oshinyolwa shuule
wondeimi 1 otashi futilwa R1.00
oondeimi 2 -" -" R1.90
oondeimi 3 -" -" R2.70
oondeimi 4 -" -" R3.40
oondeimi 5 -" -" R5.00
Oto vulu okutuma efano lyaashoka wa hala shi tseyithwe nomatumbulo wo gasha ngele ope na.

The Finnish Mission Press Oniipa
P/B 2015, Ondangwa, S. W. A.