

OMUKWETU

DIE ALLESOORTREFFENDE GESKENK



TOT HAND

AAN ALLE VOLKERE

VIR ALLE KERKE

**HET U AL 'N BYBEL AAN IEMAND GEGEE
OF LAAT GEE!**

B. EN B. BYBELGENOOTSCHAP

Winkelstraat 101
Durban

Winkelstraat 101
Durban

Winkelstraat 101
Durban





lilyo yEwilikongundu lyomusiki mongerki oyo: Jako Kangaji, Toivo Ndevaetela, Matti E-ndjala, Lahja Mbuulala, Magdalena Namalenga na Kleopas Dumeni omuhiyi.

OmoluEkotampango nomauthompango, ngashi wo Okambongerki taka pumbwa omao-paleko ngoka ga fanekwa ga kolekwe koshigongingerki, Epangelongerki olya utha oshigo-ngerki shopaulumompumbwe shi ka gongale mOnguediva eti-12-15 Januari, 1971.

Omotonatelishitayingerki Elia Neromba, Kavango, ngoka a indilwa koshigwana shaaKawa-ngo e shi yakule miilonga yeledo lyoshilongo ndyoka taye ke li pewa muKotoba, 1970, nokwa taamba eindilo ndika: Epangelongerki sho lya pulwa ewi lyalyo moshinima shika, olya tokola Elia Neromba a ka yakule oshigwana miilonga yeledo lyoshilongo, nolye mu mangulula ngaaka miilonga yongerki.

Epangelongerki lya tokola papopilo lyaayakulingerki moKawango, Natanael Sirongo, omu-sita gwokuMpungu, a ninge omotonatelishitayingerki shaKawango, okutameka muKotoba, 1970.

N. G. K. sho a gu mo muDriehoek Ooreenkoms, na DELK. ta indile pu kale oshigo-ngerki shuukumwe, Epangelongerki olya fanekwe Driehoek Ooreenkoms yi tsikilwe pokati ka ELK. ELOK na DELK, opo DELK a mone ompito okukala ha kwatha moshilonga sho-mehalakano shoka tashi longwa miilyo yaELOK miilonga yokontrak.

**“Ondi itaala ego-
ngalo limwe eya-
puki lyaakriste
ayehe”**

Eti-31 IyaKotoba omundohotola Martin Luther okwa tula oma-tompelo 95 komweelo gwonger-ki yokuWittenberg. Onkee esi-ku ndika ohali talwa lyeyelitho lyeitaalo.

Osha li oshidhigu kuMartin Luther okwiiteka po ongerki ndjoka kwa li e yi hole nona-ndo a dhimbulula omapuko ga-yo ogendji. Oye a hepekwa a-luhe noonkondo kedhiladhilo ndika, kutya oye omwiikaleli omufupi, okwi itaale nokwa lo-ngo pandjila yi ili, hangashi o-ngerki onene. Oye kwi ihepeke unene nOmbimbeli oku yi ko-nakona sigo nokuli a falwa mo-shigongi shoshilongo shoka sha ningwa muAugsberg, nkoka a, hololele ongerki ye yopaRoma kutya eitaalo lye nelongo lye kali shi lyopombambo noka li shi lyopondje yOmbimbeli.

Ombimbeli oyo ya kala O-muwiliki gwaLuther mekondjo lye sigo koonkondo dhJesus Kristus a sindana nokwa dhike egongalo lye. Megongalo ndjo-ka eyapuki omu na aantu oye-ndjiyendji noye na elalakano lyokutaandelitha Ombimbeli mokati kuuyuni auhe.

Osho ngeyi ndongo onena mo-kati ketu otu na Ehanganombi-mbeli tali dhiginine okufala e-laka lyOmbimbeli kaantu aye-he, yomiigwana ayihe, yomo-malaka agehe noyomomalwaa-la agehe.

Numvo nokuli okwa ningwa oshituthihambeleso omolwEha-nganombimbeli ndyoka lya lo-ngo omimvo 150 muSuid-Afrika. Aavalelwamo oyendji oya mo-nenwa Oombimbeli momalaka gawo yene.

**OMUKWETU OTE KU DHIMBU-
LUTHA NATANGO U INYOLI-
THE KUYELE OMOLWOMVO
1971.**

Eemhango heyali delao

Manga inandi hovela okutonga ee-mhango edi heyali delao nai tye: apa itai popi unene efimano, ongha-lelo, onghenda, elininipiko ile etilo-vakulunhu ndele nee ohai findi une-ne elineekelafano noinima ikwao.

Eshi oshe liholola nale noshi li konyala meemhango edi adishe, u-nene muyotete, monhivali nomonhi-heyali. Ashike ohatu dulu okutya umwe ita dulu okukala e nelao fi-lufilu ngenge iha wanifa eemhango edi. Heeno, ohashi dulika umwe a kale e nefimaneko noinima imwe i-kwao nande eemhango edi kedi shii. Vamwe ovananghenda, ovanashili, hava dulika novayuki ndele kave na elao eli. Ndele oshili tuu inava longifa eshikulafano lelao ove li po-munghulo (hano elao lavo kali na enangeko noupuna).

Omhango yotete yelao oyo

ELALAKANO

Kalifi elalakano longaho ile loshi-mha. Ovanhu vahapu nda mona o-vanelao ovovo hava kondjo va wa-nife oimaliwa, ndele nayo oshini-ma ngo shomuyo. Heeno mounyu-ni omu ohatu hafe nge tu na oima-liwa. Ohai kufa po shili ombada, omaupyakadi e lili noku lili. Eshi oshili oimaliwa otai ku ningi wopo-kati kovanhu. Ohai kufa po oma-luhodi nosho tuu. Ino tya oyo ai-ke elalakano lelao, ahowe, oku na ngo ikwao. Otashi dulika u na oi-maliwa ihapu ndele ku na elao. O-mu momhango yotete omo to udu-ko nawa nokutya elao oshike. O-to lalakanene shike mokukalamwe-nyo kwoye.

Umwe nge a hala okuninga owee-nda mulemule oha pumbwa okulo-nggekida oimaliwa ihapu nefimbo li-le. Oha pumbwa okulongekida sha sha yela. Kala nediladilo lomongu-

la. LALAKANENA OMHANGO ONHIVALI.

Eshi shi na ounongo osho nee eshi. Apa oto mono nee kutya ou li mokukalamwenyo kwe-lao. Oto longekida ashike elalaka-no loye nawa. Omhango onhivali ngaashi tai shikula oyo EDEUKO. Otwa pumbwa okushiiva nokutya omunhu okwa dalwa eli ngaashi e li.

Oinamwenyo oyo ihai popi oi tu dule omaye: Oyo ihai lihongo meefikola ngaashi ovanhu: Okata-na opo ka dalwa inaka hongwa o-kweenda. Ohaka tameke ashike oku-likolelela, na pokafimbo nokuli o-taka ende ohashi dulika ngo taka wile po lwotete nolutivali ndele i-haka pumbwa omuyambididi. Hano oke shi nawa elalakano lako ngaa-shi olo okulya. Nopehe na ou te ka pukulula nghe ke na okulya nokou-lifilo. Oudila yoo kape na ou e va longa ile he va longo okuninga ile okutunga oihadila yavo. Ove na o-mafimbo haa lundauluka omu ha-va kala vehe noihadila ile vehe li muyo nopomaumbo avo.

Nomokutameka oshikako oshiti-hamano shokutunga oihadila, nge-no pamwe va dimbwe nhumbi ile pamwe va tunge vali shimwe shi-shima, ahowe. Kave neendunge, iha-va diladila. Oh, oshikumwifa shili! Ope na ngo shili oinamwenyo imwe hai dulu okudeulwa ngaashi ombwa, onghambe, ondjaba, naikwao. Nde ihai dulu okuweda kwaashi ya lo-ngwa, ihai shiiva okudiladila. Kai-shi shi omolwashike tai ningifwa ngaha nongaho. Kai shi okuyoo-lola ouwa nowii, ihai tongola oshi-li noipupulu. Eshi osho oshinima shipu koinamwenyo oyo ihai longi-fa omadiladilo kuyo vene. Sho nee oshidjuu ngaha kovanhu, osheshi ye ota pumbwa okulihonga ile a longwe. Ota pumbwa okulongwa, okudeulwa, e lilonge okweenda.

Taku twikilwa

KAKU NA KALUNGA

Okuza eti-6-9. 8. 70, omukwathi gwaayakuligongalo, tate Toivo Pentikäinen omusitagongalo Kornelius Ndjoba, Omuyevangeliste Immanuel Mungungu nomusimanekwa Magdalena Namalenga oya ningile aatumwa mboka taa longo mAayeleele muuzilo mUukwanyama oshigongi. Aatumwa mboka oya zile momahala ngaka: Nkongo, Ekoka, Eendobe, Namatadiva. Oya gongala muNkongo.

Elalakano lyoshigongi olyo okuhwamitha nokuyumudha oomwenyo kohapu yomwenyo. Itandi eta mpaka ashihe, ihe onda hala ngaa oku ku etela omalupe gamwe nde ga koneke momasiku ngaka gomayambeko.

Tate Pentikäinen a lesa patekisti Eps. 18:32 ngeyi: "Oshoka Kalunga kalwe olye pOmuwa, nemanya lyehupitho olye, nge haKalunga ketu awike?"

Okwa ti mokukanitha omukumo nomomalimbililo, omuntu ta vulu okupula oku na tuu Kalunga kashili? Tse otwi itaala nohatu hempulula eitaalo lyetu: "Ongame ondi itaala Kalunga oHe Aantu haayehe ooitaali muuyuni.

Ngashingeyi oku na omalimbililo ogendji okulimbililwa Kalunga. MuAmerika omu na yamwe taa ti: "Kalunga okwa sa." Omuntu gwongashingeyi ita koneke Kalunga oku na omwenyo. Tse otwa kwathwa sho twa kolekwa ngeyi mokwiitala kwetu.

Kalunga e tu pa oonzapo odhindji mOmbimbeli ye mwene sho ti ipopi; "Ongame omutango nomuhugunini, ongame Kalunga, kaku na kalwe." Jes. 43:6. Omusamane Pentikäinen okwa ti kutya tse itatu limbililwa Kalunga, unene sho tu li mokati kiikumithalonga ye yi thike mpaka, e yi longo mevi lyetu lyAawambo, ngashi okutidha po uupagani wuulunde okumweneka iita, notwa humithwa ngaaka komeho mokutseya Kristus Jesus Omuhupithi gwetu. **Maria Shilumbu**

Aanandjokwe tamu kundilwa po

Ovafimanekwa amushe Ovanandjokwe, eendokotola, novahakuli, ofye atushe nameme Helena Samuel ohatu mu kundu unene eshi mwa hakula omukulukadi wange Klaudia Ndemuweda nokaana ketu. Ove li nawa paife notave mu minike. Kalunga ne mu yambeke moilonga yeni aishe.

Johannes Ndemuweda, Oshakati

O UKONGINDJILA MOKAHAO WA KULA

Omuhongi Riitta Honkanen eshi a tembuka mOngwediva a ya kOkahao ovahongwa vomOkahao mOngandjera, ovaseminali ove mu indila e va tamekife oukongindjila.

Eti-14. 6. 1968, moxungi mwa fatululwa oukongindjila eshi tau ti. Konima yaasho, ovo va hala okuninga ovakongindjila ova ninga omaehelo avo. Okwa hovelwa tete koukadona 22. Eshi va pita ekonakono, ova yandja eudaneko lavo komulonga waKunene eti-4. 4. 1969.

Inashi xulila ashike opo, odula tuu oyo okwa ningwa natango omaehelo, novakendabali vape ova hovela. Molwoilonga yofikola ihapu, okwa longifwa ashike omalyo makaya amwe mokwoongala.

Eti-5 na 12, 4. 1970, omuwiliki wovakongindjila pamwe novakongindjilawilikitameki, mOkahao, ova konakona ovakendabali. Nande mefiku olo leti-12 ekonakono la li la kwata monghama, aveshe ovakondja naanaa.

Eyapulo ola li li na okuningwa komukulu lunhu wovakongindjilakadona mOwambo, meme Raija Salmi. Okwe uya pamwe noomeme Katrina Auala, na Laina Kivelä eti-18. 4. 70. Otwa li tu na etumaumbwile lakula, osheshi okwa li ve na oku tu etela epandela lovakongindjila. Ovakendabali vokOngwediva yo ova li ve ya koshivilo eshi.

MOsoondaha konima yelongelokalunga ovayandjiudaneko ova fikama poalitali. Meme Raija ou a yapula okwa kumaida ovayandjiudaneko va diinine aishe oyo ya wapala, naayo yoshili, naayo i na epopilo liwa keemwenyo davo. Meme Katrina okwe tu djaleka ombadi yovakongindjila. Osho ovayandjiudaneko ava: Ester Amukeshe, Beat Nakamwe, Olivia Mbwalala, Hilja Shikongo nomushangi va halelwa omayambeko aKalunga neminiko kumeme L. Kivelä.

Fye Ovakahao otu shii okupandula omushiti kwaaishe e i ningila Owambo moule weedula efele.

Lahja E. Kapofi



Omufitaongalo tatekulu Elia Haipinge wokOkahao ota fikama novakongindjila vomofikola yOseminali, mOkahao pamwe nameme Riitta Honkanene ou e va putudila moukongindjila.

ETUMO MOWAMBO

**Manga twa li momilema, Muuyuni twa pwila mo.
Twa shi ekulilo lyawo, Uupagani wa wilike.
Momagumbo gootate.**

**Opo tu li moomposi ombonyo, Tu uve kwa ti kolokoto.
Omokatempa kuudha omulongelo, Ta ka hilwa kiimuna.
Osho twa tala twa kumwa.**

**Mokatempa mwa zi Omusoomi, A tya embo lyOmbimbeli.
E tu lombwele ekulilo, Sho twa li twaa nowino.
Otwe mu kundith'oondhimbo.**

**Shalongo pwa li Shikongo, Ngoka a li e nohenda.
Aayenda yetu a taamba, Atuhe tuu twa uvithilwa.
Twa ningi aana yaKalunga.**

**Atuhe tu panduleni, Oshigwana shaatumwa.
Sha thigi po evi lyasho, Opo shi ye mOwambo.
Shi tu kuthe moomwigo.**

**Evangeli nali taandele, Li thike kukehe gumwe.
Opo tu mone ehupitho, Tse tu ka likole omwenyo.
Omwaanawa itaagu hulu po.**



Ongunga onene moku-kalamwenyo kwomukriste oyo ndjoka ngele omuntu ita gandja embo lyoohapu dhaKalunga kuyalwe mboka kaa dhi na. Efano kombanda yoshifo naampaka meni, otaga ulike nkene ohapu yaKalunga tayi taambathanwa kiigwana niigwana, komalaka nomalaka mUuyuni auhe. Ohapu yOmuwa tayi ti: "Nevangeli ndika lyoshilongo otali ku uvithilwa nuuyuni auhe li ningile iigwana ayihe ehokolo; nota ku ya ihe ehulilo."

OOMVULA 150 DHOSHILONGA SHOMBIMBELI

Ehangano lyokunyanyangidha Oombimbeli muSuid-Afrika, oya gwanithile oomvula ethele nomilongo ntano muAguste 1970 okuza uuna Iya dhikwa 23 Aguste 1820. Omalaka ogendji miilongo oyindji yaAfrika, oga monenwa ohapu yaKalunga melaka Iyaavalelwamo kehanganano ndika.

Oombimbeli yoshimbulu oya holokele 1933. Ndjika oya landula elundululo lyOshihoolanda ndyoka Iya li Iye etelelwa kujan van Riebeeck, sho e ya mOkapa. YOshizulu oya holokele 1883, yAakoosa 1864, yOshindonga 1954 noyOshinama 1967.

Manga iigwana mbika inaayi mona Oombimbeli ayihe melaka Iyawo okwa kala omambo gamwe po ashike ngoka ga lundululwa ngashi wo tashi ningwa komalaka gamwe natango ngashi ando Oshihherero nenge Oshikwanyama. Natango ope na etegameno enene Oombimbeli yOshikwanyama yi holoke mbala, nokomeho ishewe melaka IyoRukwangali.

Ehangano lyelundululo lyOombimbeli Iya-Britania nolyiilongo oya dhikilwe 1884, nomo moka mwa valwa ehangano ndika Iya-Suid-Afrika momumvo gu li pombanda. Oongalo muuyuni auhe otadhi umbwa opo aantu ya vule okuiimonena oohapu dhaKalunga melaka Iye, nokamwaalu te ka vulu. Epangelongerki lyongerki yaEllok, otali kumagidha iilyo yongerki okuhambelela pamwe naS.A. omolwoshilonga shehangano sha longo u ule wethimbo li thike mpoka megameno Iya-Kalunga.

Oombimbeli oya zile peni?

Ngiika oku na mboka taa dhiladhila. kutya Oombimbeli embo eyapuki Iya gwile megulu kuKalunga opo li leshwe kaantu ye, nenge yamwe taa tala kutya oyo embo Iyowala Iya nyolwa kaantu ngaashi tse, onkene kali na oshilonga.

Momayamukulo agehe ngaka otamu holo-ka ngaa oshili yasha, oshoka Oombimbeli oya nyolwa kaantu noya nyolithwa nehoolo Iya za pombanda mOmbepo Ondjapuki. Uukalunga wa longitha aantu. Omuyapostoli Petrus ta ti: Ne mu kale mu shi shi tango kaku na nando ehunganeko limwe mOombimbeli li shi okufatululwa koonduge dhomuntu, oshoka inaku hololwa ehunganeko nando limwe koonduge dhomuntu, 2Petr.1:20-21.

Oombimbeli ngashi edhina Iyo Iyenyete tali shi ulike, oyo ondumba yomambo ga tulwa kumwe ngoka ga hogololwa momambo ogendji ga nyolelwe pethimbo Iyayo pomimvo 1100 n. C. koshigwana shalsrael na kuyalwe. Ehogololo ndika inali ningwa moshigongi shesiku limwe, ihe oshinima sha ningwa uule woomvula 400. Sho shika itashi ti ando kutya aantu pomimvo ndhoka oya kala owala yaa na oohapu dhaKalunga, aawe, oya kala ye na Embo Iyompango ya-Moses nomambo galwe ga talika oge na ondilo yehoolo lyOmbepo. Egongelo Iyotango Iyomambo tala 2Mose 24:4-7.

Natu dhimbulukwe natango kutya mpaka otaku popiwa ashike omambo gomEtestamendi Ekulu alike.

Ehogololo oya ningwa nomautho ga kola oga ziminwa opo omambo ngoka gOombimbeli ga talike:

a) oge oge na oonkondo dhopaKalunga noge na okwiitaalwa muuyeleele mbuka ku-

OSHIKE SHI LI KOMESHO?

(Lesha nombibeli yoye)

Mombibeli ohatu lombwelwa: "Osheshi ngenge olutu letu, etwali eli lope du tali ngumunhwa po, otu na eumbo puKalunga inali tungwa nomake, laalushe omeulu. Paife hatu ka pwilikina apa hatu ka kala ngenge okukalamwenyo kwopaife kwa xulu.

Oukwaalushe

Pehe na exulilo, ile efimbo inali yelekwa. Ombibeli tai ti: "Petameko Iyaayihe ongama nda langekwa mo, manga evi Iya li Iyaa ko. "Omaj. 8:23. Epangelo lomafimbo okwe li pangela muKristus Jesus Omwene wetu Efes. 3: 11. Eudaneko lomwiitaveli keshe,

taya oge omambo guprofeti noga nyolithwa mehoolo lyOmbepo yohole.

b) gaa shi okuvundakanithwa nomambo galwe, oshoka ngoka oge omayapuki

c) nOshikalimo shago shi talike oshiyapuki

d) omwaalu gwago gu kale gu na oongamba.

Opo ihe opwa kala omambo omakwawo ga talwa oge na oshindji shopauprofeti noinaga gwedhelwa momambo gOombimbeli. Ngaka oga ithanwa omambo gaApokrive (apokriewe—oshiholekwa) omambo omaholekwa. Gamwe gomugo omadhina oge Embo IyaEsdra, 1-2 Iyaamakabier nosho tuu.

Oongerki dhimwe omambo ngaka oye ga tula mOombimbeli ongoshihohela shOombimbeli, ihe mOombimbeli dhimwe ga ethiwa po owala ngaashi mOombimbeli yOshindonga nenge yOshisoomi. Konga Oombimbeli ya-Katolika yOshiafrikaansa kEhangano lyOombimbeli IyaSuid-Afrika ngele we yi hala.

olo omwenyo waalushe Joh. 5:24. Ava inave mu itavela, ekano laalushe.

Pehe na Kalunga

Apa pehe na Kristus, kape na elinekelo Efes. 2:12. Momitemo domindilo okutokola ava inava shiiva Kalunga, ndele itava dulika kevangeli lOmwene nokoshinge shaye, vo otava tokolwa fiyo alushe 2Tess. 1: 8-9, nde vo otava i okuhepekwa alushe, novayuuki momwenyo waalushe, Mat. 25:46. Ondjabi youlunde eflyo Rom. 6:23. Ngenge itatu itavele exupifo olo linene la udifilwa tete kOmwene, ndele konima yaye kwaava ve mu uda Hebr. 2:3. Osho yo Sodom naGomorra, nomikunda domoushiinda ovo va taunhuka omhango yaKalunga ngashi venya Juda. 7.

Opo pe na Kalunga

Simon Petrus ta ti: "Omwene, ohatu i peni, ove u na eendjovo domwenyo." Joh. 6: 68. Oshiyandjiwa shaKalunga osho omwenyo waalushe muJesus Kristus. Rom. 6:23. Osho tave lilongele eshi tashi uya nokutya omwenyo waalushe 1Tim. 6:19.

Openi to ka kala?

Ope na eemhito mbali: moheli osheshi ino dulika kOmwene. "Ou ita itavele Omwene ita mono omwenyo waalushe, ndele ehandu laKalunga otali kala kombada yaye." Joh. 3:36. Meulu osheshi owa itavela muJesus Kristus 1Joh. 5:11-13.

Immanuel H. Hamunyela

Omugundjuka niikolitha

Etumbulo ndika "Omugundjuka niikolitha" olya fa epu mokutumbula, ihe edhigu mokutula momadhiladhilo gomugundjuka mwene. Uunsne pethimbo ndika lyehumokomeho. Ihe nando ongaaka kandi na uumbanda okuya mulyo nokuulika oshiponga komugundjuka omolwiikolitha. Osho wo eyambeko lyaKalunga nuuyogoki womugundjuka komwenyo nokolutu moku ha longitha iikolitha. Ontseyo ya gwana kandi yi na, ihe Ombimbeli ya tseya'ashihe. Omayeletumbulo gaSalomo. 23:29-35:

Ombimbeli oya tseya uukwatya auhe womuntu mokukalathana kwe niikolitha. Ehalo lyo lyene lyelongitho lyiikolitha kali shi etameko lyokombanda, ihe ota li zi muule womwenyo.

Omuntu ota nu opo a mweneke ethimnikihalo lye. Ano e na ompumbwe tayi mu thiminike opo e yi paluthe. Nokupupyaleka omutima, opo uumbanda auhe kwa li e u na u tidhwepo.

Ihe omugundjuka omunelago ongoka ta fadhukapo iikolitha. Oshoka Ombimbeli otayi tu londodha otse aagundjuka kutya: "likunwa otayi lyana ngeyoka notayi hiya omayeye guuzigo ongongoloka."

Omolwokunwa eiuvo lyomuntu otali si, ewi lyokomwenyo olyaala, ano lyasombanda. Uuna ndo omuntu a nwa, uuzigo wiikolitha otatu kolitha oonerve dhe. Ota gumwa koshiponga, ihe ita dhimbulula oshi li popepi naye.

Ngele oye omugundjuka ota dhimbwa nesimano lye kutya, oye omugundjuka. Ohaluka yowala omuntu a limbililwa nuugundjuka we wa likapo kongoloka yiikolitha.

Omolwiikolitha omuntu otashi vulika iundulile megumbo lyaantu. Nongele ta yi moompangu etumbulo lye olya ndika. "Onda li nda kolwa kii shi wo sho nda ningi."

Eeno, shili etumbulo lyOmbimbeli olya tsa sho tayi popi onkolwi tayi ti: "Oyo ya dhenge ndje inaandi alulwa, oyo ya kepagula ndje kandi uvite sha." Ke uvite sha, oshoka omaiuvu ge oga lika nayi kongoloka.

Epulo olya ndika. Omugundjuka olye e noombole ye inaa yona sha? - Oye ngoka a hiyilwa uuzigo kongoloka.

Natu taleni omukalo omupe gwa holoka ngashingeyi. Aantu ohaa vundakanitha ombiila mumwe nondjindja. Elalakano halilwe li ili, olya okupupyaleka omutima. Uuna ndo ombiila nondjindja tayi kondjo, opo yi folome oshinima shimwe, nena mekondjo ndika omutima gwomuntu otagu pupyala. Natango epulo otali ti:

Olye e nomeho omanenguni? "Omboka haa uhalele pomaviinu haa ya okumakela omagwedhakanithwa." Omayel.23:30.

"Onda hala ekende pombanda."

Omuntu nguno okwa tula ayihe melandulathano, oshinamunate hashu onkatu ngaa yopevi, okwa hala onkantu yopombanda, onkee ta ti "ekende pombanda."

Etameko lye olya li ngaa ombiila, sigo tayi shundula mehalompumbwe lye. Itayi vulu we oku mu talaleka. Onkee ta pula, ekende pombanda. Ano Kamana, naNgama.

likunwa yo yene naanaa oshike? Omayel. 20:1 "Omaviinu omusheki nomagongo anakukudhila, noka ku na omuntu ta kolwa kugo omunandunge."

Omuntu ta nu opo a holole uugoya we pwaa nuumbanda. Omayel.23:33.

Miigongi yetu yaagundjuka otwa li tune ni aagundjuka aayelee mlitya nomoondjenda, ihe twe ya kanitha katu ya na we,

"HAMBELENI OMWENE ONYE EENGUDU DOVA-KWAITA VAYE" Ps. 103: 21.

Momudo ou wehambelelo ovanyasha voshitaingerki shaUkwanyama ova holola ehambelelo lavo nomilungu neendjovo no noilonga yavo, eshi va li va ongala moshooongalele shavo mEdundja eti-12-14.6.70, omo va li va pangelwa ketumbulo eli. "Hambeleleni Omwene onye eengudu dovakwaita vaye."

Oshooongalele osha dimbulukwa osho Kalunga e shi tu ningila osho evangeli lomwenyo olo la kala mokati ketu eedula efele nolo omhito yoku tu dimbulukifa tu hambelele Kalunga. Oipopiwa i lili noi lili ya etwa po, ngaashi oshipopiwa "Elongelokalunga otali lalakanene shike?" Sha etwa ku Rev. J. Mufeti, a holola moshipopiwa eshi: "Mokulongela Kalunga ohatu pumbwa eliyandjo inatu longela Kalunga moipupulu." Fye otu na yo okuhambelela Kalunga eshi tu nomhito yelongelokalunga.

Oshipopiwa: Omunyasha noshilonga shetumo sha popiwa ku Rev. M. lilonga. A tumbula: Oshilonga shetumo ohatu shi tameke me-

umbo, momukunda, meongalo, nomongerki yetu aishe. Oilongifo yoshilonga eshi oyo: Eilikano, eilikaneno, okuyandja sha, okuyakula nokuliyandja yo ndele fye otu nokuhambelela Kalunga eshi tu nomhito okulonga oshilonga shetumo.

Omaimbilo nomahokololo a etwa kovanyasha moshooongalele oo omhito nedidiliko lokuhambelela mwaaishe e tu ningila.

Ohatu pandula yo ovaenda ava va dja keembinga neembinga notwa ongala pamwe navo moshooongalele shetu.

Omolwoshilonga shetumo momudo ou wekuwililo, omawilikongudu mongerki aishe a faneka ovanyasha va tale ondilo yeedula efele okudja 1870-1970, opo omudo keshe u kale u na R1. 00, eongalo keshe li etelele efele.

Apa otapa shikula omaongalo oo a wanifa notaa talika a findana, naa inaa wanifa, taa teelelwa a tume ongunga yavo kombelwa yovanyasha yoshitaingerki.

Eongalo	
1. Edundja	130. 00
2. Ongenga	111. 00
3. Ohalushu	110. 00
4. Onhelelwa	100. 00
5. Engela Hospitaal	15. 00
6. Oshakati	5. 00

Ongunga
= = =
= = =
= = =
= = =

Apa otapa shikula omaongalo oo e na eengunga.

Eongalo	
1. Kongo	R 70. 00
2. Olupandu	R 67. 00
3. Ondobe	R 52. 15
4. Okalongo	R 47. 00
5. Engela	R 41. 00
6. Ongwediva	R 31. 85
7. Endola	R 26. 00
8. Okatope	R 24. 65
9. Eenhana	R 21. 00
10. Omundaungilo	R 16. 00
11. Onangolo	R 5. 00
Ongalo yoshooongalele	29. 00
Aishe kumwe.	R1061.25

Ongunga
R 30. 00
R 33. 00
R 47. 85
R 53. 00
R 59. 00
R 68. 15
R 74. 00
R 75. 35
R 79. 00
R 84. 00
R 95. 00
R698. 35

Ongunga kumwe

Kalunga na yambeke ovanyasha vaye naaveshe ovo hava yandje sha kovanyasha mOwambo nomOushimba omolwoshilonga shetumo. **Ev. I. Mungunga**

ngashi naanaa ne yene aagundjuka tamu. dhimbulula oolye noolye mwa kanitha moshigongi sheni. Oya yi peni?

Omuwambo ota tumbula ta ti. "Oha ka tegwa naashi (kehole) ha ka li." Tu kotoke ni otse aagundjuka, siku limwe satana ote ke tu tega naashi tu hoole osho "ombiila" "nokuka." Ohaluka owala twa thiki ponkatu ndjika, "ekende pombanda."

Osha li sha pumba mOwambo yetu okuwa omugundjuka a lalwa na ye koonkondo. Ihe ngashingeyi osha tana. Omolwashike?

Omagumbo gaagundjuka ga teka omolwomikithi, oshoka aantu ya hiyilwa uuzigo kongoloka momeho gawo noya tsika kaa lwe te we esimano lyoondjokana. Omagano go moondjokana itaga monika we, omoluuzigo wongoloka ndjoka ya tuka noya lya iilyo yomuntu ayihe yomeni.

Kotokeleni **OHALUKOHOOLI** oye omudhipagi omunene gweikondololo nogweipangelo alihe momuntu. Yi kotokela otayi li notayi dhipaga eiuvo lyokomwenyo. Otseni aagundjuka inatu dhanitheni omaganohenda

gaKalunga ge li mokati ketu ogo oohapu dhe miigongi yaagundjuka.

Komudhini kehe Ombimbeli otayi uvitha epangulo ekwaKalunga. Jes.5:11-14. Osho wo Jes.5:22-24. Omugundjuka kehe dhimbulukwa iikunwa itayi yono ashike okukalamwenyo kwomuuyuni muka, ihe otayi eta wo eso lyomwenyo gwaaluhe.

Ombimbeli oya tala shili kutya, okupikwa kiikunwa okwo endhindhiliko lyonkalo ya dhimbwa Kalunga.

MEtestamendi ekulu, iikunwa oya kala ya indikwa aagundjuka. 3Mos.10:9-10. Ompango ndjika okwa ti nayi kale yaaluhe koluvale noluvale, ano sigo okepipi ndika lyetweni natu dhimbulukweni ompango ndjika yaKalunga kutse.

"Inamu kolwa komaviinu moka hamu zi uuwinayi kehe, aawe, udheni Ombepo Ondjapuki." Oto zimine tuu epukululo ndika opo u kale omunyasha omugundjukalela, nenge to tsikile natango? Omugundjuka omunelago ongoka ti iutha koohapu dhOmuwa.

Hiskia Haufiku

Omumvo gwotango gwiilonga yomambakumbaku miitayingerki

Omumvo gumwe ogwa piti ngashingeyi sho twa pewa elaka kOngonhangano yoongerki dhopaLuther kutya, aagandji yiimaliwa oya monika omolwomambakumbaku gongerki yetu notwa vulu okutameka oshilonga shoka.

Omambakumbaku gatatu giitayingerki yomOwambo ga thiki kOniipa muSeptemba pamwe noma mbakumbaku gaali ga landwa omolwiilonga yokuNkongo. Embakumbaku kehe lye ya kumwe netemba, noshipululo oshinene shomayego gatano noshiyelekanitho shoohakisa mbali. Tango iilongitho ayihe ya silwa oshimpwiyu nawa, nopo okursus yaahingi ya tameke.

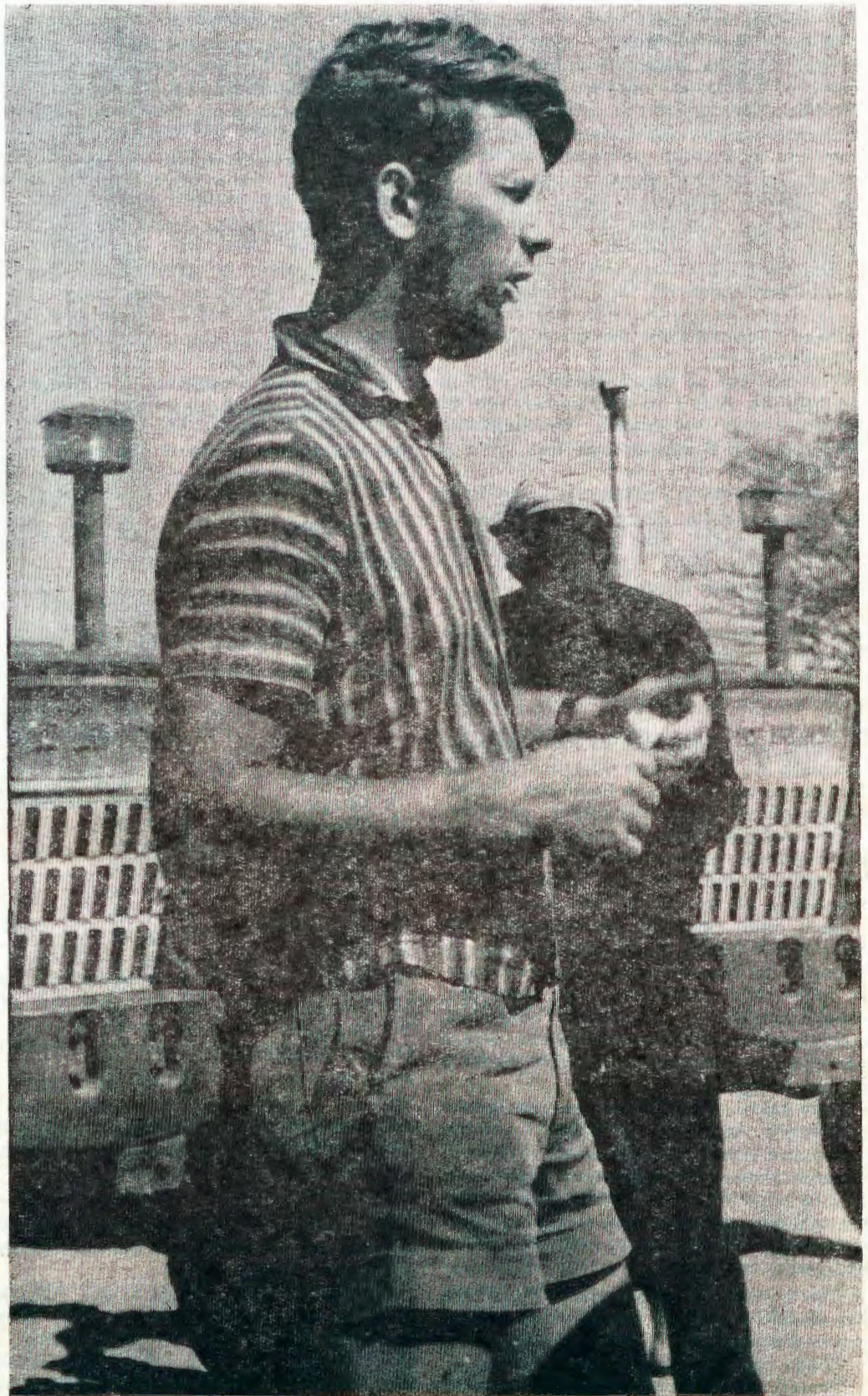
Aahingi ya hogololwa miitayingerki oya dheulwa nawa muule wethimbo lyiwiike itatu.

Ihe aahingi inaa kala miilonga yopondje ayike, aawe, oya longwa meni mondjugo wo ngaashi moskola lela. Ootundi odhindji aahingi ya yalula, ya nyola momambo gootundi nomomambo gomafutilo no goonzapo. Okursus yaahingi sho ya hulu, omuhingi kehe okwa mono onzapo nopo aahingi ya langekwa miilonga yawo miitayingerki.

Moshitayingerki shomOndonga embakumbaku olya tameke neendelelo okupulula momagongalo. Aahingi yaali oya longo ethimbo alihe, omasiku gahamano moshiwike nootundi omulongo nane mesiku kehe. Embakumbaku olya kala aluhe oshiwike shimwe megongalo kehe palandulathano lya tungwa kewilikongundu lyembakumbaku moshitayingerki shoka. Omapya omilongo mbali sigo omilongo ndatu ga longwa aluhe moshiwike shimwe. Pehulilo lyaJanuali omagongalo agehe gomOndonga ga mono eyakulo lyembakumbaku nomagongalo gamwe ga pululilwa ishewe muFebuluali nomuMaalitsa.

Moshitayingerki shokUukwanyama embakumbaku lya longo wo nuudhiginini nando inali longo momagongalo agehe. Unene moshitayingerki shoka iithindi ye eta uupyakadhi nembakumbaku lya thikama omathimbo gamwe sho omagulu ga pangelwa nenge sho pwa tegelelwa omagulu omape.

Moshitayingerki shokUuningini oshilonga inashi endeleda nawa ngaashi miitayingerki yiilwe yomOwambo. Elandulathano lya yonuka nayi sho embakumbaku lya thikama olwindji manga pwa tegelelwa



Omusamane Olle Eriksson, Katonyala, ngashi a lukwa oye amushanga gwoprojekti, Lutheran project, mOngerki yetu

omumakenika niilongitho. Omagongalo gamwe ngaashi Ompundja, Ogongo, Onawa nOnesi inaga mona nando ekwatho lyombakumbaku.

Moshitayingerki shokoKavango embakumbaku lya longo kashona kowala. Aakavango pamwe inaa penduka natango okulongitha o-

mukalo ngoka okupulula nembakumbaku. Otashi vulika wo kutya, iimaliwa ya pumba hwiya, nenge pamwe omapya gokoKavango taga longwa niikaha nuupu ge vule omapya gomOwambo.

Epya sho lya pululwa, mwene gwepya ta futu R3.00 motundi kehe yiilonga yembakumbaku. Omu-

hingi ta fala iimaliwa mbi komu-sitagongalo ngoka ta tumu iimali-wa ya gongelwa megongalo lye, komudhiginini gwoshiketha shiiniwe yembakumbaku moshitayingerki. Momumvo gwotango iiketha ya mono ngeyi iimaliwa yokufuta oondjambi dhaahingi, omahooli gembakumbaku nosho tuu. Miiketha mwa kala iihupe nokuli.

Iitayingerki yomOndonga noyokUukwanyama ya mono iihupe yi vule R1000 moshitayingerki kehe manga oshihupe moshiketha she-mbakumbaku lyokUuninginino oshi li R700.00 Iihupe iinene yi thike mpa pamwe itayi monika we sho ekwatho lyOngongahangano tali hulu na sho omambakumbaku otaga kulupa notaga pumbwa omaopaleko omanene. Ihe otashi vulika ngaa kutya, iiketha ayihe otayi mono iimaliwa ya gwana okupingakanitha omambakumbaku gayo nomambakumbaku omape nenge okulanda omambakumbaku omatiyali konima yoomvula mbali.

Pwamwe otashi vulika nokuli okulanda okambakumbaku kamwe numvo ngele iiketha tayi kwathathana. Pamukalo ngoka okambakumbaku haka taka vulu okulongithwa uuna embakumbaku limwe tali thikama sho lya yonuka. Pomathimbo galwe wo okambakumbaku katya ngeyi oke na iilonga, uunene pethimbo lyokupulula, embakumbaku limwe moshitayingerki itali vulu okugwanitha omaindilo agehe. Nosho wo ngaashingeyi pethimbo ndi lyokwenye, sha monika kutya, omambakumbaku oge na iilonga ethimbo alihe mokututa iiti niikuni, nosho wo mokupulula oongwena nomokututa oofulaha komatungo.

O. Eriksson

YA YOOLELELWA OSHILONGATUMO

Ongerki onkwaevangeli paLuther yomUushimba (ELK) sho tayi ka tameka mbala oshilongatumo mokati kAaherero nAayeleele muBotswana, aatumwa yatatu oya putudhilwa wo oshilonga shika ethimbo lyontumba, ngashingeyi oya piti nawa omakonakono gawo muPau-linum.

Aatumwa mbaka oyo aayevangeliste Gabriel David, Ananias !Gao-!-gáseb nomusita Josua Musutua. Omalongekidho ogendji oga ningwa po noshilonga shika otashi ka tameka mbala.

Waa li ko ku tala we

“Okoku tuu wa li kOsoondaha ohela?”

“Aawe, kaana ngwe, ohela ine mona ethi nbo, onda li nda hala ko lela ihe onda mono aayenda ombaadhilila, onkee inandi ya ko we. Yakwetu mwa tala nduno elangeko lyomusita omupe?”

“O, ndiya etalo we nenge iihuna! Elangeko lyomusita sho lya li ngeya, ngiika ngele omayapulwa gaasit ohaga kala ga tya, ngiini? O, tse ha twa tala. Nomumbisofu hasho nde mu mono, kanda li ndi mu shi.”

“Sho shene osha tya ngiini?”

“Manga tuu elongelokalunga inaa-li tameka, yo aasita oye ya ye li momikweyo ya ukilila omweelo omunene gwongerki, omumbisofu komeho. Sho ngaa taa thiki momweelo gwongerki, lyo eimbilo 510 mEhangano olya yaka. Omumbisofu naakwathi ye taa ukilile moshiyambelo manga omulangekwa ta thikama poshiyambelo.

“Omumbisofu okwe mu kundu nohapu dhaKalunga paJoh. 21:15-17, nokwe mu fatululile ekonakono ndika nkene lya li edhigu kuPetrus, nolye mu dopeke nokuli. Ihe nando a dopa ngeyi, Omuwa okwe mu sile ohenda sigo a piti nawa moku-hokolola nomokusa kwa fa kwe.”

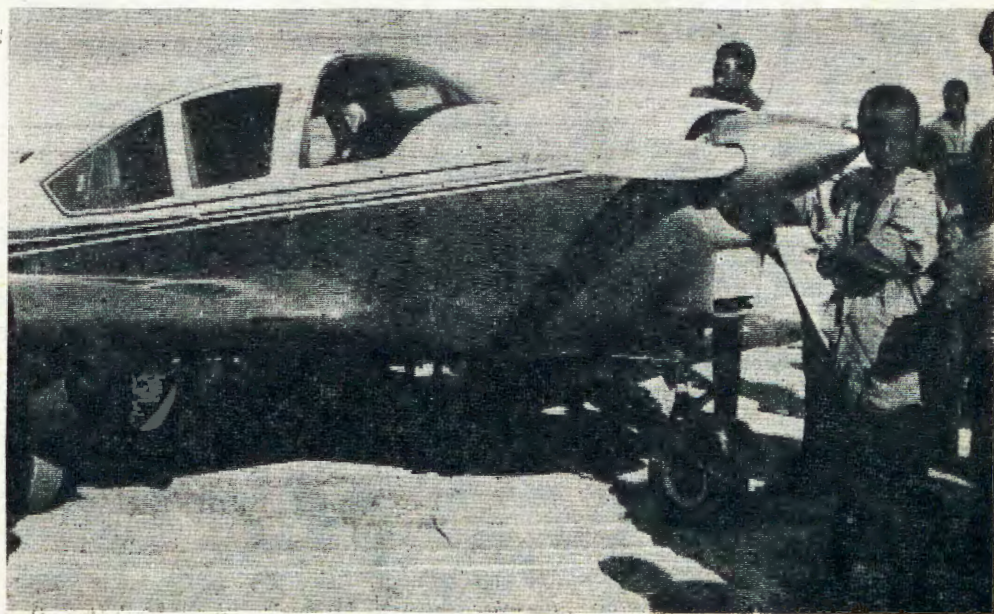
“Omuyapulwa okwa pulwa omapulwa gatatu omanene ongegano lye netokolo lye. Konima yomapulo okwa indilwa a hempulule eitaalo

lyaakriste montaneho yegongalo o-po ihe aakwathi mbaka yomumbisofu melangeko taa lesa omatumbulo gawo moohapu dhaKalunga nomulangekwa ta tsu oongolo noku tentekwa iikaha komutse gwe”.

“Ta, otwa talele. Waa li ko ku tala we. Okwa li aalongi yokEngela mboka ye mu thindikila ye li yane, gumwe gwawo omutonatelishitayingerki Ismael Ninda nomutaleli gwosikola tate Toivo Ndevaetela. Oye tu imbile omaimbilo omawanawa shili. Omulangekwa Elia Nghikembwa oye ngaa e tu ningila elongelokalunga neuvitho lyesiku ndyoka.

“Osho nee twa ka tsikila oshuthi kegumbo lyameme Anna-Liisa Lundmark nkoka twa li oshike to li po. Iitaafula ya yalwa niikulya yomaludhi kehe. Gumwe gwomutse osho a popi ta ti: O, uwanawa sho twe u ningilwa u thike mpaka kombanda yevi, ngele owomegulu o ngiini?”

“Ongwediva ya mono omusita omupe taa, omugundjuka lela. Oye omutitu mehistolli lyegongalo lyaNgwediva. Okwa yapululwa uusitagongalo 1965. Okwa yakula ethimbo efupi megongalo lyaNgela niishewe mosikola yuuteologi kOti-mbingwe. Opo ihe okwa ka tsikila natango uuteologi kuMapumulo, Nat-tal nkoka a kala oomvula ndatu. Okwa hokana noku na aanona yane. Kalunga na yambeke omusita gwetu.



Pakutala Uuyuni owa hedhathana popepi miinima oyindji. Shika osha yela nawa sho ondhila onshona ya vulu okulambela pekango lyaNamakulo pwowala pwaa na okapale kokulambela pOniipa. Shika osha tuthile mo omeho gaatalambambi oyendji. Aanona naakuluntu oyu udhile uukaku wawo omavi opo ye ki italele ko yo yene.

OSHILONGA OSHIHOLIKE

Kaku na ukriste ulwe wopaMbi- mbeli waashi mboka tau longo oshilongatumo. Ngoka kee uviteko oshilonga shetumo, momwenyo gwe inamu yeelwa natango kevangeli.

Etumo olyo edhiladhilo lyaKalunga mwene, olyo ehala lyaKalunga mwene. Okudhiladhila etumo okuya momadhiladhilo gaKalunga Jes. 66:19-20. Okukala nehala okulonga etumo, osho okukala mehalo lyaKalunga mwene Joh. 3:16. Ngoka a makele elago lyomuKalunga, oye ita vulu oku li mwenena, aawe, okuna oku li topelela yalwe 1Kor.9:16.

Paulus netumo

Paulus okwa thiminikwa okukalela euvitho lyevangeli. Oye okwii lwete omunangunga gwaayehe. Rom.1:14. A fa a tala oshigwana ashihe oshe mu lile ongunga, onke ta ti:

“Yaye, ngele ngame itandi li uvitha.”

Oye mwene okwa ningi omuyamba muKristus, ongunga ye yoonjo ya shituka ehambelelo. Mokufutula ongunga ndjika, okwa gandja omwenyo gwe aguhe, oonkondo nomagano ge agehe. Enyanyu lye okunyanyukilwa ehupitho lya shituka lya ningi eyakulo lyaayehe. Efes 3: 8.

Omuyapostoli Paulus ina longa ashike molwongunga ndjika osha ningi shili enyanyu lye, 2Kor. 5: 14-15. Kristus okwa sile ayehe, elaka ndika olye mu mangelula, nolye mu pe ehala okukalela ngoka e mu sile. Vilho Ph. Shikulo

Onorondo

Onorondo gokuhara,
Ono zi mo gokufumana.
Megulu yitetukisa,
Guho wokupongoka.

II

Mokutu rwamena wafumana,
Mokutu hara wa kontagura.
Moudigu imo wa tunda,
Nontoko wa tu wapekera.

III

Ruyigo roge wa sigo.
Untungi woge wa yokeka.
Rumbandingwa wa tavagura,
Mararo wa zegurura.

IV

Monomfa doge twa pongoka,
Mohonde zoge twa kuhuka.
Hompawetu wasirugana,
Kristusa wa-tu lizambera.



Omusitagongalo Hofini Nakamela oye omusitagongalo mEtunda nomukulukadhi gwe meme Aini Nakamhela oye omupangi moshipangelo shomEtunda. Oyo ayehe yaali oya ladhilala noonkongo moshilongatumo mokati kaapagani mbe-yaka.

Omudo womunhu

Nani nomunhu oku na yo omafimbo ane ngashi omudo; oitemadua, okulombo, okufu, nokwenye.

Oitemadula opoopo omunhu ote liyoolola nota yoololwa yo kovantu kutya, ota ka ninga omushike: Odula iyapuki tai kunghula yo tai tale nge omunhu ou te i tambula opo i mu loke. Nge e i tambula ota hovelwa nee oku lokwa.

Ngenge wa tambula odula ei, otai ku yukilile, tai shashe epya fiyo la menifa nokuli oipumbiwa ihapu ya hapa nawa. Ohatu ti nee okulombo.

Omunhu a tya ngaha, oha ifanwa omukriste e shi ku lineekelwa. Ndele nee ou ina lokwa kodula yetemuno, oku na oudjuu okulokwa kodula yokulombo, sho oha shi ningwa ngaho kefilonghenda.

Ngenge omunhu ou okwa pewa efilonghenda ndele a lokwa keedula edi, oye nee epya liwa. Omwii-taveli washili noku na yo oijmati yaMwene waye Jesus. Omunhu ou okwa fa epya lokufu.

Okwenye oko efimbo li tilifa shili. Ou a teya nawa mokufu ota yolele ketayoo, shaashi omaanda aye oku yadi oipalwifa, ndele nee ou ina teya ye a finda mokwenye oku li moupyakadi nomoluhepo lihe shi kutumbulwa.

Natu kongeni hano odula yopetameko, yetemuno, inatu tya, opo mangha, ohatu ka lilaana nope hana etalaleko.

Gottfried M. Hiyoonyanye

EPUKULULO

Ooyene yihauto naahingi yawo otaa yemata noonkondo omolwoonakulondekwa noonakufaalelwa. Oyendji inaa hala okufuta ooyene yihauto mbyoka. Yamwe otaa indile iihauto yooyakwawo, opo ya ye pontumba pongandi omoluudhigu u li po, ihe konima yokugaluka kwe ina hala okufuta nando okapenipeni. Nani okulonda noku shi hinga okupu ku vule okufuta sho we shi longitha.

Mwene gwoshihauto okwa mono ashike iimaliwa yokulanda oshihauto ihe okwa pumbwa wo ekwatho lyomuntu kehe, opo a vule okwiiandela omahooli nokukwatha oshihauto moompumbwe dhasho. Dhiladhileni wo kutya, oosende hadhi futwa koonakufaalelwa itadhi vulu okupangelitha nando okatenda kamwe komoshihauto, shila okulanda omahooli. Aantu mboka ya hala okulongitha iihauto yooyakwawo yo inaa hala oku yi futa, otatu indile epangelo lyoshigwana li itule mo moshinima shika noku ya geela.

Sho twa pewa ompito ndjika noshigwana shetu shi kale shi na iihauto tu longeleni ano kumwe, opo tu ende mehukumomeho ewanawa tali etele oshigwana shetu omayambeko. Tu indileni kuKalunga e tu pe onduge dha yela moshinima shika.

A. A.Shikongo

OMUKWETU

Oshifo shOngerki onkwaevangeli paLuther yomOwambokavango
Die Tydskrif van die Evangeliese Lutherse
Owambokavangokerk
Oha zi mOniipa,
Omukuluntu gwoshifo/Hoofredakteur Omum-
bisofi Dr. Leonard Auala,
Amushanga / redakteur Sebulon Ekandjo
Ondando komumvo mOwambo 70c kUushimba
nOkavango 90c
Kombanda yomafuta R1.30.
Oondando nomambestelo naga tumwe
kOmukwetu,
Oniipa, P/B. 2015 Ondangwa, S. W. A.
Oshinyolwa shuule
wondeimi 1 otashi futilwa R1.00
oondeimi 2 "- "- R1.90
oondeimi 3 "- "- R2.70
oondeimi 4 "- "- R3.40
oondeimi 5 "- "- R5.00
Oto vulu okutuma efano lyaashoka wa hala
shi tseyithwe nomatumbulo wo gasha ngele
ope na.

The Finnish Mission Press Oniipa
P/B 2015 Ondangwa S. W. A.