

OMUKWETU





PEVELO LOVATUMWA ITAPA WANWA

Evalulo lomudo wongerki 1969, otali ti oilyo yongerki yaELOK oi dule paife 180,000. Eshi otashi ulike konyala etata IOvawambo aveshe ovo tava tengenkwa ve fike lwopo-300.000, ove li oinhimbu yongerki ei.

Nde ovanhu ava ova fikamenwa komapulo mahapu a holoka mokukalamwenyo kwavo kwopaife. Eendelelo lefimbo la fiya po vahapu, nove liyekelela eshi ve shi koneka, kutya mboli opo ve li hapo ngeno ve na okukala.

Na vahapu ovo va kendabala okulotoka pamwe nefimbo, opo ngeno shi ende nee nawa, va damauka, va teka, va lemana omalutu neemhepo davo.

Eshi sha kala sha ikwa nale sha ninga oulai pefimbo lopai fe, naasho sha li sha tula ovanhu kumwe, pomukunda, moshilongo, meumbo, ile nokuli pokati kovalihomboli vavali, sha talika kashi na vali eenghono nekwafo. Elongelokalunga la talika li li mondjila, ongenge ashike omunhu ndi na elao, nda fimanekwa, ndi na emanguluko, ndi na ehongo ndi na ashishe nde shi pumbwa, ndelenee ou ina hanga omufika ou, naye mwene ote litale ngaau nedu loovene oko a lyata ko, inali hala oku mu hambata, naashi osha twala nee vahapu moiponga idjuu.

Ongerki komukalo ou itai pumbwa ashike hano ouhapu wovanashilonga mokati koilyo i fike apa noinima yavo, nde taku pumbiwa shili eshiivo neiko lokuhakula eemwenyo nomalutu a nyonaunwa komidingonoko. Ovatumwa 106 tava longo apa ngashi omukulu-nhutumwa e shi popya mOmisioni neudo, ovo hano okangudu k anini nokuyeleka oshilonga apa shi fike. Tu shi shi shili kutya etimhaumbwile loiwana oKristus, ndelenee nande ongaha pevelo lokangudu aka ke li natango mokati ketu 106, itapa wanwa manga kongerki, osheshi okukala kwavo apa oko ngo taku shilipaleke etimhaumbwile loshiwana muKristus efiku keshe.

OONTOKOLWA DHOKANGUNDULONGEKIDHO KIINIMA YOOSKOLA DHONGERKI

1. Omukuluntu gwosikola Okanao a hokolola omafaneko ngoka ge li po omolwosikola yawo sho tayi pumbwa okunenepekwa yo yi kale Osekundo. Pwa talwa ompumbwe yaalongi unene yomomuvo 1972. Onawa ngele taku monika aalongi Aawambo taa vulu okulonga muka. lilyo ya holola enyanyu sho osikola ndjika ya zimininwa kepangelo yi tsikile natango naalongi Aasoomi ya tsikile pamwe nAawambo oshilonga shika. Omukuluntu gwosikola a tseyithile oshigongi edhira epe lya zi kepangelo "Gebiedskool."

2. Omunongeki gwenongelo lyaatekuligumbo a eta efaneko lycnzapo yaatekuligumbo. Okangundu oka zimine yi kale ngaashi ya thanekwa nokugwedhela po omafatululo giitya mbika:

nawalela =	75%	-
nawa =	60	- 75%
ihwepo =	40	- 60%

3. Okangundu oka zimine ethaneko osikola yi taambe wo aamati momumuvo tagu ya 1971, andola 12. Ethaneko lyiilongwa yawo olya zimininwa, ihe ehingo lyiihauto olya kalekwa sho pwa etwa omaimbo.



Omukuluntutumwa M. Ihamäki

OMATUMWALAKA MOMBEO

Oyendji sho kaaya mwene nando ompito yokuthika mOmisioni mOmandongo opo ya hambelele pamwe nongerki yaElok molwoshilonga shevangeli sha tamekele mpaka uule woomvula ethele limwe, oya holola shili ehalo lyawo mokutuma oondelekelama. Itatu tumbula ayehe mpaka oshoka oyendji noonkondo, ihe yamwe yomuyo oya li ya ti ngeyi.-

Nomahalelo agehe omawanawa moshituthi sheni shoomvula 100.

Aalongi naayakuli moshipangelo shaShakati

Otse otu li pamwe nane momadhi-

ladhilo pethimbo lyoshituthi sheni shoomvula 100. Kalunga na yambeke iilonga yeni natango komeho.

*Maria na Ossi Kanerva
Durban*

Nomahaleloyambeko gokomutima tatu mu halele mesiku lyokudhimbulukwa egongalo lyotango muule woomvula 100, notatu galikana ongerki yeni yi koke natango.

*Blank Christelike Akademie
Johannesburg*

Otatu mu halele omauwanawa nomayambeko gaKalunga ogendji, ga za kEhanganotumo lyaanangeshefa.

*Matti Koponena
Helsinki*

Omumbisofi gwaDamaraland, nani inandi vula okukala pamwe nane pethimbo lyokudhana oshituthi shoomvula 100, onke tandi tumu omakundo omapyu omolwandje mwene nomolwegongalo alihe noku mu halele omahalelo omawanawa kune. Ongerki onkwaevangeli pa-Luther yomOwambokavango nEtumo lyAasoomi sho Etumo lya tsakanitha oomvula 100 miilonga yongerki mOwambo. Omagalikaneno gongerki yaAnglikani oge li pamwe nane, opo Kalunga a tsikile oku ulika omayambeko ge kombanda yiilonga yeni moomvula tadhi landula.

*Bishop S. Winter
Windhoek*

Ehanganano lyOombimbeli muS. A. oli na enyanyu lyoshituthi pamwe nane notali hambelele Kalunga pamwe nangoye nongerki yOwambokavango molwiyimati yoshilonga muule woomvula 100 mbyoka tamu

TakutsikiIwa

Aatumwa oyo aaithanwa yongerki

Moshituthi shoomvula 100 kOmandongo omukuluntutumwa gwehangano tumo lyaSoomi, muSuidwes, Rev. Mikko Ihamäki okwa etele ekundo lye ngeyi.

Omadhiladhilo gomukuluntutumwa gwonale mOwambo, nakusa Valde Kivinen (Manya) andola oga tsakanithwa, nena ongame ndi kale ngashingeyi omutumwa Omusoomi awike moshituthi shika. Nakusa Manya okwa nyolele kutya, miilonga yetu yaatumwa omu na okukala omukumo muupongooli u thike mpoka, kutya ongerki nge tayi dhimbulukwa okuya kuukriste kOwambo moshituthi shawo shetumo shoomvula ethele, nena moshituthi moka kamu na okukala we nando aatumwa, aawe, omukuluntutumwa awike, ihe naye wo, e nokukala e na okofa ye ya longelwa, a shune mbala kOsoomi.

Etegameno ndika lyanakusa Ma

OSHILONGA SHOMUNASHILONGA

Otundimbimbeli ngashi ya ningilwa aanashilonga mOthika komusitagongalo Filemon Alugongo.

Kamu shi we oondjendi naakwiilongo moshilongo shaKalunga Ef.2:19-22. Omunashilonga megongalo kee shi ondjendi moshilongo shaKalunga. Oku na shoka tashi tegelelwa komunashilonga kehe osho uudhiginini. Omuntu sho e li po omunashilongo shaKalunga, oye ano omupika ta longo shaa shoka Kalunga te mu lombwele ngashi Josua 24:15.

Moshilongo shaKalunga ihamu kala omuntu kee na iilonga, kehe gumwe oku na okampungu ke hoka ta longo, Mat. 28:19-20. Omunashilonga megongalo oye ngoka a lombwele: "Inda, nokwa yi."

Omunashilonga ota longithwa keitaalo ndyoka e li na 1Kor. 4:1. Omukriste kehe ota talwa omuyakuli mepya lyaKalunga. Otse otu li megumbo lyaKalunga, otse oyaKalunga Rom. 14:6-9. Ngele tatu longo nenge tatu si, otatu longele Kalunga.

Itatu longo tu ka hupithwe, ihe otatu longo oshoka otwa hupithwa. Ngele itatu longo, itatu holola wo kutya otwa hupithwa. Otwa tokola tu kale megumbo lyaKalunga, opo tu longe uuwanawa Tit. 2:14. Mboka ye li megumbo lyaKalunga oyo ezimo lyaKalunga lya hogololwa. Aanashilonga itatu vulu oku itangela iilonga yetu, ihe otatu ti: "Otse aakalele aahethi."

Oshilonga sheni aanashilonga okutala oombasikena ngele odha kwatathana tuu nomunoko Rom. 1:14. Etungo megumbo lyaKalunga ngele olya halakana ongoye omunangunga. Kehe gumwe okwa pewa oshilongitho she, ihe Kalunga ota ka pula iihohela kukehe gumwe. Mat. 25:14-30. Mpaka aanashilonga otu na uumbanda, sho kehe gumwe ta ka pulwa yangapi nda likola.

Megumbo lyaKalunga ngele ito imike mo iiyimati, Kalunga oku na uupu oku ku kutha mo nokulangeka mo ngoka ti imike iiyimati. Mat. 21:33-41.

Omutseyithi:
Klaudia Iita

nya, olya fa inaali tsakanithwa, oshoka ngame otandi mu kundu ngashingeyi ne amuhe mboka mwa gongala moshituthi shika, medhina lyaatumwa 106, mboka taalongo mongerki onkwaevangeli paLuther yomOwambokavango. Aatumwa mbaka oyo aaithanwa kongerki mokukala miilongayakulo yi ili noyi ili momagongalo, miipangelo.

Mosikola yetumo kOsoomi otwa longwa nokuli ngeyi: "Kalenii mwa dhimbulukwa kutya, one oondjendi megumbo moka tamu yi mo." Shika oshe tu etele tu kale no-

Pethimbo lyomisioni mOmandongo, aantu oyi ilandele omambo ye ga pumbwa positola yomambo, ndjoka ya li ya longekidhilwa momukwiyu gwehistoli. Tala oomeme Marja Virtanen na Anna Kapenda nkene taa fatulula embo lyongerki yOwambokavango. Omambo ogo omulongi ndunge omwaanawa, naangoka iho ga leshe owa fa wi isiikila.



kwaanonkondo nokwiikelela kiinima yuupolitika noyepangelo, aashihe shimwe iinima mbika otayi ziilile peni.

Oshitya shimwe sha tumbulwa nomwenyo aguhe nosha dhimbululwa melongelokumwe, osha kala shi tu uvitithe uugumbo koKavango nomOwambo, osho shoka kuume. Oshitya shika osha vuka miipangelo nomomagongalo nomomanongelo pomatungo nomiigongi. Otwa tseye kutya, inatu ilongela edhina ndika. Otwe li pewa omolwoshilonga shetu.

Tse otatu endele iinima yomukwaniilwa omunene Oye Kristus, ngoka a tumu aatumwa yotango Aasoomi pwa piti ngashingeyi oomvula ethele limwe. Oye wo e tu tuma, notatu ende pamwe naye medhina lye. Omolwohole yokuholathana, otatu vulu okwiithanathana, kuume kandje.

Kristus ota vulu oku tu kutha moshilonga, ongele gumwe nagu-

OU DU WOMUTIMA

Oudu womutima owa hapupala paife na vahapu otava fi filu koudu ou. Omuhakuli womitima omushamane Chris Barnard, eshi a pulwa nhumbi omunhu e na okukoleka omutima waye okwa nyamukula ngaha:

"Lya oikulya ii, unene longifa oiimati. Likelela komakaya, kala yo kokule nomaudano okulotoka. Okwa weda ko kutya luhapu ovanhu vomitima da kola ihava hokwa unene okupwilikina eeraadio, ovanye palutu nopamhepo, ve neexwiki dile, ihave lipula noimaliwa na luhapu ovanhu va tya ngaha ovautama kolutu. Eshi Dr. Barnard okwe shi lombwela oshoongalele sheendohotola mu-Manila, Filippyne.

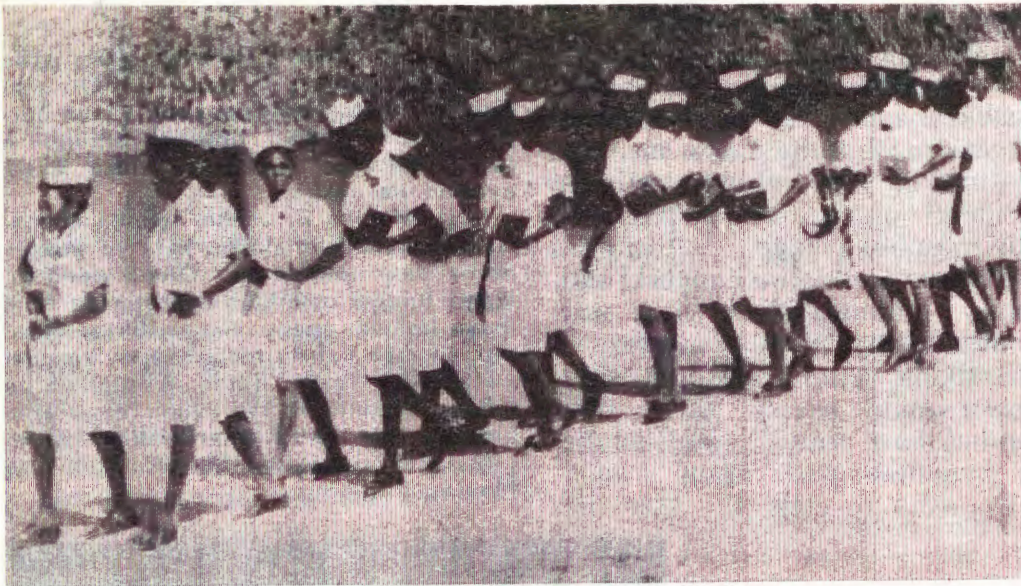
mwe nenge atuhe oshita. Nena ye mwene okwa tseye, omolwashike. Ihe manga inaashi ningwa, ota sile oshimpwiyu oshilonga shoshilongo she.

Tangi kelongelokumwe mpaka ookuume.

Dha fupipikwa



Omukuluntutumwa B. Eriksson 1952-58



Aapangi otaa ka dhana oshituthi shawo shelangeko kOngerki yaNiipa

OKWA MANA OONDJENDA

Omulongi omukulu nomutumwa mokati kAadhimba Soini Nuuyoma okwa hulitha oondjenda dhe moshipangelo shaNakayale eti-15.1970

Omulongi Soini okwa valwa 1903 mUukwambi e ta piti Oseminali 1928 mOniipa. Okwa tumwa a ka longe kOnangalo, mUukwaluudhi nkoka a longo oomvula odhindji. Konima okwa ka longo kEunda kUukolonkadhi. Omumvo 1954 okwa tembukile ishewe kEtunda nopenhimbo ndyoka mEtunda kamu na nando omukriste gumwe.

Omusamane Nuuyoma okwa adhika kuunkundi wopalutu unene momumvo 1963, okwa tandwa lutatu, ihe okwa tsikile ngaa oshilonga she shuulongi noshetaandelitho lyevangeli moka mokati komikunda dhaapagani. Ina mona naanaa omuyakuli moshilonga she okwa longo ngaa awike sigo 1961 sho a adhika komuyevangeliste Samuel Mateus.

Aakriste yotango, mEtunda oya shashwa 1959. Oshilonga shuulongi okwa kala e shi hole shi vuli the iinima yilwe. Sho a hulitha oondjenda dhe, omudhimba gwe ogwa falwa kegongalo lye kEtunda nogwa langekwa momawendo omape moka inaamu fumvikwa omuntu shito ga lukwa "Epanja lyanyanyudhandje." Okwa longo oshilonga shOmuwa oomvula 40, nokwa thigi po omukulukdhi gwe, aalumentu 7 naakiintu 4.

Oomboka taa kunu nomahodhi, oyo taa ka teya nenyanyu lyopombanda.

Okuza komeho: Paulina Kashea, Foibe Kalo, Uilika Nakapipi, Beata Shipingana, Andeline Kwenye, Priskila Angula, Elise Kosenge, Tukondjeni Shetuhanga, Julia Ampweya, Tusnelde likuyu, Albertina Penda, Apia Nghatanga, Landuleni Haihambo na Maria Kanhene. Omuwa okwa popya a ti: "Epya oli li po lya tiligana, ihe aalongi oyo aashona, galikaneni ano Omuwa gweteyo a tume aalongi mepya lye."

OMUMATI A PUMBIWIA

Mostola yOmambo otamu pumbiwa omumati ngoka a pita ostanda onti-6. Na kale e shi okuyalula nosho tuu.

Ngoka wa hala nowa pita ongundu ndjono, holoka kOshinyanyangidho u pule.

A A H I N G I T A A P U M B I W A

Miitayingerki itatu yom Owambo, unene shUuninginino noshUukwanyama, otamu pumbiwa aalumentu mboka ya hala okuhinga nokulongitha omambakumbaku.

Aantu nenge omuntu a tya ngaaka na kale e na iinima tayi landula:- a) omunamikalo, omwiinekelwa nomunambili, ke shi onkolwe,

b) na kale e na ombapila yokuhinga mbakumbaku,

c) onawa wo unene ngele oku na ontseyo yasha mukupululitha mbakumbaku, ihe mushika ota vulu okunongekwa mpaka.

Ngoka wa tala oto vulu na ou na ehalo lyokulonga iilonga ya tya ngaaka, holoka komusamane Olle Eriksson kOniipa, u pule. Onawa u holoke manga Septemba inaagu ya.

15 YA LANGEKWA MUUPANGI

Elangeko lyaapangi olya ningwa mongerki yaNiipa, eti-24.7. nuumvo meyakulo lyaasitagongalo Toivo Pentikäinen, Festus Ashipala na Petrus Shipena. Elangeko ndika olyo etiyali nuumvo, lyotango sho lya adhika lya ningwa muMaalitsa.

Moshituthi shika oshinene mwa li mwa gongalele konyala aantu 200 omusita T. Pentikäinen ngoka kwa li po omuwiliki miilonga mbika okwa popitha aayapulwa ngeyi kutya:

"Nye ngashi mu li po ovakriste, osho tamu ka hakula yo pakriste. Omaloloko otaa ka kala po mahapu, ile fiku limwe kamu udite ko naanaa oshinima nhumbi tashi ende, ndelenee nande ongaho, eyakulo leni otali ka kolekela vahapu eitavelo. Oshilonga tamu ke shi longo osho omhito iwa yokuhokolola Kristus."

Fimbo oshivilo eshi inashi ka twikila meumbo lofikola yovapangi ngashi luhapu nokuli sha ningwa, omushamane Pentikäinen okwe va kumaida ngaha:

"Lidimbweni nye vene, nye mu liyandje koshilonga eshi. Jesus ou oshihopaenenwa sheni, oye enyumuko nomwenyo." Joh. 11:25.

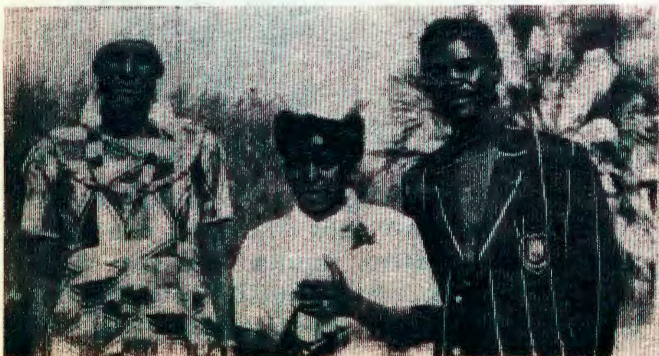


Tukondjeni na Maria otaa nyanyukilwa esiku lyoshituthi shawo, unene sho ya piti momakonakono omadhigu.

Eshi oshiwa tuu mongerki?

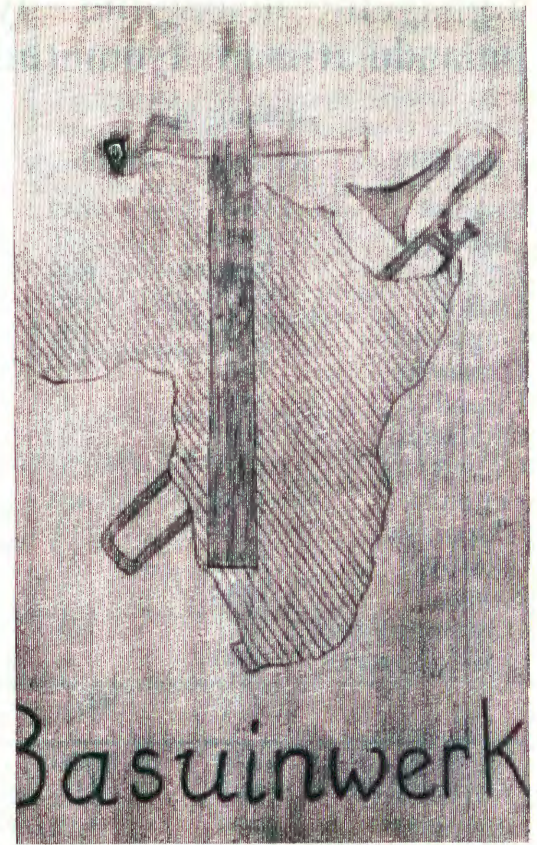
Oitwa tai shikula apa oya talika enyono lelongelokalunga alishe mongerki yaElok. Oyo oya yandjwa noya konakonwa kovahongwa vomoseminari yaKahao 1967.

- Omalelogongalo gamwe oga kanitha oshilalakanenwa shoshilonga shago, noga kanitha wo o-hole. Iilyo yamo ya fa yaa na euvathano nomokutokola ihaa ipula ngeyi: Shino otashi opalele nenge otashi hungu tuu aantu! Shika sha eta omangungutulo nomashunomonima nomaiteko. Okulela pamwe naKristus hasho ngeyi.
- Otu nokusimaneka aakuluntu yegongalo nokutaamba omapukululo gawo. Oshoka oye lile po wo oku tu kwatha ngashi aasita naawiliki yalwe.”
- Iikolitha ya vuka nomaauvithi yoohapu dhaKalunga. Ino komba kondje megumbo mwa nyata.- Itashi ti wo twaa pulakene omauvitho gaantu ya tya ngaa-ka, Jesus ota ti: Shoka taye mulombwele shi ningeni, ihe inamu holela iilonga yawo.
- Aanashilonga megongalo ya lika po nayi keliko lyuuyuni.
- Omauvitho gamwe omale noinanga longekidhwa, onkee itaga ti sha nando kaapulakeni. Aantu oyendji oya etha okuya komambo omolwomauvitho omale nenge gaa na sha.
- Aalandithi naalandi yomOsoo-ndaha ya vuka.
- Tatu kanitha oshindji molwo- kwaaholoka miigongi.
- Okuthikama nokukudhila molugumbo lwongerki pethimbo lyElongelokalunga, okwo okwaayapula Ongulu yaKalunga.
- Omugundjuka ota kutha nuupu embo lyokunyola iinima ye mokuya komambo, ihe ta nyengwa okuhumbata Ombimbeli ye.



Yatatu yomaapangi Aakavango oya li ya piti mekonakono ndika, noya ka tsikila oshilonga shuupangi kOkavango. Mpaka opu na Elise Kosenge pamwe naathikameni ye.

- Ongalo mongerki oya shituka omukalo wokuliulika nokufengalala; kai fi vali elongelokalunga lokomwenyo.
- Miituthi yoohango aantu taa gandja oshindji nenyanyu, ihe mongalo yomOngerki otatu nyekelele Kalunga. Ando tatu holo- la ondhino ndjika pomukwanii- lwa gwomuuyuni, ando tatu dhi- pagwa. Tu tileni Omuwa gwaawa.
- Oomeme vamwe kave uditeko nghee tava nyono po shihapu melongelokalunga, omolwoku- mwena nounona tava lili. Eshi otashi imbi shili oshilonga sha- Kalunga shi fike mwoove mwe- ne nomumukweni, notashi kudi- le yo omufita nomuudifi.
- Momaongalo amwe ounona vo- vapaani ohava efiwa va mane ma- nga eengudu mofikola younona, opo va ka ye nawa omudo au- she mofikola yeshasho. Eshi o- sha etela nge okamwenyo kanini mokudiladila ovanhu tava kala efimbo lile inava mangelulwa momatimba noinava mona oma- dina mape.
- Ovakrise kave shii okwiimba e- longelokalunga lOuvalelo Uyapu- ki. Ngeenge tashi dulika, nali longwe meefikola dekoleko no- meesiminari nosho moyoongale- yovakriste.
- Aakriste oyendji, unene aagu- ndjuka, kaye uviteko oshiponga shoondanisa, nando omo hamu valwa okahalu hoka taka vala uulunde woluhondelo neso.
- Kevahapu twa kwatwa kouxwe- nge ngeenge hatu tumbula: “Di- ma po omatimba etu ngashi hatu a kufile po ava va nyona kufye.” Umwe ota tokola nokuli etoko- lo litilifa: Oshili, itai kufile po nima, fiyo okefyo! Ndele ngee- nge wa shaama naye mongerki oto udu ta ingida: - - - - - nga- shi hatu kufile po ovo va nyo- na kufye! -Ame petumbulo eli ohai kulukifa ondaka yange no- kulipula: Oshili tuu eshi hai popi?



Endhindhiliko lyetanga lyomankuma lyaSchneider, Afrika nomushigakano mokati.

Onda wana okuliendela ame mwene

Taleni ovamwameme, ondi uditile unene eenwenyo detu ovanyasha onghenda omolwokuhashikula Omwene wetu Jesus Kristus ndee otwe lininga ovakaenakonasha na- Kalunga notwa hala okulandula omahalo etu vene. Etumbulo eli twe li hongwa kutya, ame onda fikama komufika wange mwene otali tu twala ponghulo osheshi hafye vene tu likwete.

Nokuli vamwe eshi tava pukululwa me- ndjila davo otava ti kutya, ovafita fiku va kolekwa ove va lombwela kutya, ova wa- na okuliendela voovene. Heeno, osho va tonga, ndelene hapamukalo ou nandena- nde. Diladila oinima ei tai dulu oku- ningwa omashendjo. Eshi shiyapuki nashi yapulilwe ouyuki washo. Ngeenge otashi ku nyenge, indila Omwene, osheshi ou te uya kuye ite mu te po. Kalunga otaa teeleele tu kule meedjovo daye, hamoulunde ou twa hala oku shikula.

Woo eshunduko movanyasha, nomova- kulunhu omolwedimo. Vahapu tava nye- ngwa okuhafa manga ine lidenga mo. Woo ekano tali ke tu hanga, woo eflyo laalushe le tu likola, woo oivilo youhamba waKalunga tai ke tu idililwa po, woo eshi oivilo yoheli tai ke tu yeulukila.

Tu efeni hano eendjila doulunde tu shi- kule ondjila yomwenyo. Inatu hokweni ewano lounyuni ou, osheshi Ombibeli ya tya: itali xupifa nande omwenyo. Omwe- nyo woye nau tye alushe: Onda hala oku shikula Omwene.

Maria A. Nenghwanya

Egongelo nelongitho lyimaliwa mOmagongalo palandulathano lyomuthika gwokugongela 1969

Eligolo molwoomvula 100

Sho twa thikithwa mo momumvo gweligolo, shika otu shi oku shi nyanyukilwa nokutanga Kalunga. Ngashi ngame te nyanyukwa osho naayehe ondi inekela otaa nyanyukwa pamwe nangame. Nomolwenyanyu ndika kape na ngoka ta kala inaa ninga po sha, ngele megumbo lyawo, puushiinda wawo nenge shaa mpoka ta kala po. Epandulo lyetu tatu li holola ngele tse tatu igandja shili miilonga, opo tu ambidhidhe oomwenyo nomalutu ga lolodhwa kuulunde. Otse otwa pewa omwenyo gwaaluhe omagano, tu gandjeni wo omagano miilongayakulo ongehambello lyetu.

Gideon Kamwandi

Egongalo	Iitaambwa			Iifutwa	
	Kumwe	Oshihupe	Ekwatho	Kumwe	Oshihupe
Engela	3159	739	300	3159	509
Ongenga	2997	236	120	2997	334
Endola	2445	628	20	2445	606
Ondobe	2285	184	380	2285	248
Ongwediva	2044	198	510	2044	9
Ohalushu	1944	215	280	1944	5
Edundja	1852	43	750	1852	-
Okalongo	1666	292	400	1666	128
Onheleiwa	1415	76	330	1415	18
Eenhana	1305	49	440	1305	74
Olupandu	1119	213	90	1119	52
Okatope	1089	21	160	1089	19
Kongo	1034	57	250	1034	36
Omundaungilo	797	55	320	797	68
Oshitayingerki	270	-	270	270	-
	25421	3006	5620	25421	2106
Onayena	3635	1000	122	3635	201
Oshigambo	3233	212	-	3233	329
Olukonda	2875	184	200	2875	337
Oniipa	2159	181	-	2159	223
Oshitayi	1944	24	60	1944	105
Onyaanya	1934	146	50	1934	99
Okaku	1810	171	100	1810	108
Ontananga	1616	98	77	1616	41
Eheke	1422	102	234	1422	49
Oshaango	1307	115	398	1307	154
Okankolo	1254	139	122	1254	67
Omuntele	949	17	120	949	9
Oshitayingerki	250	-	250	250	-
	24388	2389	1733	24388	1622



Omuyevangeliste mEtumo muuninginino Fransa Kankondi ngoka ha pewa ondjambi ye moshiketha shaagundjuka

IITAAMBWA IIFUTWA

Egongalo	Kumwe	Oshihupe	Ekwatho	Kumwe	Oshihupe
Okahao	4655	528	80	4655	763
Elim	2723	275	400	2723	199
Tsandi	2613	393	290	2613	378
Nakayale	1879	331	292	1879	388
Etilyasa	1713	240	220	1713	172
Onesi	1698	94	676	1698	52
Oniimwandi	1690	157	270	1690	80
Onaanda	1679	158	400	1679	123
Onangalo	1559	284	170	1559	96
Ogongo	1356	47	250	1356	17
Onawa	977	58	217	977	70
Ompundja	560	—	—	569	354
Othika	190	—	—	190	—
Elondo	173	—	—	173	2
Oshitayingerki	380	—	380	380	—
	23845	2555	6645	23845	2702
Mpungu	1398	45	184	1398	170
Mupini	1361	90	245	1361	38
Nkurenkuru	1109	47	184	1109	56
Rupara	840	23	184	840	93
Oshitayingerki	177	—	177	177	—
	4885	205	972	4885	357
Kumwe	78539	8155	10970	78539	6787



Nomuuninginino wEtunda oshilongatumo oshi ilikolele mo aayakuli yasho, nguka Adreas Kayekwapo, omulongisikola pOkoshuis yopEtunda

Tala kep. tali landula

RUACANA TE KI IMONENA ONDOOLOPA

Oshigongi shoka sha li sha ningwa komusamane M. C. Botha omunisteli gweputudho nehukumokomeho laaluudhe pamwe naaniikandjo yi ili yepangelo nosho wo ongundu yepangelo lyOwambo, mOwambo, omwa tokolwa koRuacana ku ningwe ondoolopa omolwokupupaleka iilonga yi li pegwo lyomeya ndyoka.

Okandoolopa nkoka otaka ka thikama miitopolwa iyali ombinga yaatiligane naaluudhe. Moshikandjo shomeya otamu ka kala aatungamagumbo 75 aatiligane naaluudhe 200. Otaku ka tungwa wo okapangelo taka ka kala noombete 20 omolweyakulo lyaaniilonga.

B. B. K. otaka tungitha wo ongalashe, ostola, okefe, ehala lyiitungitha ehala lyokuvululukilwa niipumbiwa ayihe ote ke yi falako. Otaka kala naatungamagumbo 10 aatiligane naaluudhe 120 miilonga ye.

Efyo

Ondaka yoluhodi oya dja meumbo lomufitaongalo Johannes Kashihakumua, Eenhana, tai hokolola omukulukadi waye a xulifa oweenda eti-9.8.1970, konima yeetundi dimwe eshi a mona okaana. Meme Ester, eshi eenghono daye da pwa po, noukwatya waye tau ningi mwii, okwa kendabalwa ku monike oshihauto momukunda, nde inaku monika nande, nongodi yokupopya oya li ya nyonauka, onghe ina mona vali ekwafo leendohotola.

Eengudu dovanashilonga eshi va kundana ehapu eli, ova dja mOnandjokwe, mOniipa, Ongwediva, Oshakati, Engela, nOmundau-ngilo va ka hekeleke kaume kavo neongalo nondjovo yOmwene. Meme Ester fimbo ina ya moshihakulilo, ngonghela okwa kala nelongekido lolwiimbo meongalo, oye yo okwa kala mongudu yaava kwa li va djala oikutu itoka mOmandongo, molwiimbo lameme A. Hirvonen. Ehambelero linya paife oku li na meulu, mondaka iwa i dule yokOmandongo. Ina lya ashike eumbo laKashihakumua oluhepo, nde eongalo alishe, nomukunda wavo keyakulo laye. Okwa fiya po ounona 10, nokamati komoshiponga okeli nawa. Omwene na hekeleke oonakufiwapo ava vomEenhana.

OONKWATWA 250,000

Omavi ngaka Siberia, Brazil, Suid-Afrika, Formosa oonkwatwa dhomugo ndhoka dhe edhililwa omoluupolotika odha yalulwa no-dha monika dhi thike 250,000.

Egongelo lyiimaliwa
dha za kep. 6

Omadhimbulutho: Pamiyalu dhiitaambwa oshitayingerki shUukwanyama osho shotango, ihe musho kamu na nando egongalo limwe lya sindana. Engela olyo lyotango moshitayingerki shoka olyo etitatu mOngerki ayihe.

2. Oshitayingerki shOndonga osho oshitiyali pamiyalu, ihe osho shotango mokugongela. Musho omu na omagongalo gaali, Oniipa n Oshigamboga sindana pamwaalutengeneko gwago. Onayena olyo etiyali mongerki ihe inali sindana pamwaalutengeneko.

3. Uuninginino owo uutitatu. Musho omu na Okahao hoka kotango mongerki ayihe nokuli, ka sindana pamwaalutengeneko. R80-00 inake dhi pumbwa.

4. Oshitayingerki shaKavango osho oshitine, Omagongalo gasho agehe kamu na esindani.

IILYO IPE MU W.L.F.

Oongerki ne dhopaLuther odha taambelwa mehangano lyoongerki lyaakwaLuther nuumvo moka yimwe yadho ya zi muSuidwes-Afrika, omwamemengerki yomUushimba (ELK). Oongerki ndhika dhilwe odha za mulndonesia, Asia, nomulndia.

Oongerki onkwaevangeli paLuther yetumo lyAandowishi mUushimba oyi na iilyo 105,278 momagongalo 42 noyi na aasita taa yakulwa kaayakuli yawo 171. Shika otashi ti kutya ongongahangano yaakwaLuther ngashingeyi oyi na oongerki 82 dhi na iilyo ayihe kumwe 53,708,896 miilonga 44.

OMAMBO TAGA LANDULA MPAKA

otaga adhika mostola yomambo, Oniipa

Die Lewende Taal Afrikaans as Moedertaal vir St. 9-10			
Sekondêre kursus (Rossouw, du Toit, Louw, Jurgens, Theron)		@	R2. 76
Afrikaans Grammatika en Taalkunde vir Afrikaanssprekende Leerlinge St. VI-X Barnes		@	R2. 10
Die nuwe Tweetalige Brieweboek-The New Bilingual letterwriter J. Kromhout		@	R3. 90
New English as a second Language Bk. I Fletcher & Swanepoel		@	R1. 38
" " " "		@	R1. 92
" " " "		@	R2. 22
A comprehensive English Course St. VII-VIII J. P. Coetzer-J.H.K. Vivier		@	R1. 20
Verklarende Afrikaanse Woordeboek Kritzinger en Labuschagne Pinaar		@	R10.20
The Students' Companion Wilfred D. Best		@	R- 84
Afrikaans-English Dictionary Coetzee		@	R- 85
Good News for Modern Man		@	R- 45
Die Naslaan Bybels		@	R1. 50
A First book of Sets (John Glark)		@	R- 90
A Second book of Sets (John Glark)		@	R- 90
Spoken English Form I (de Jager & Horne)		@	R1. 02
Spoken English Form II (T. J. Horne)		@	R1. 20
Moderne Algemene Rekenkunde Vorm I (Burger Lubbe)		@	R1. 74
Mbundu Bibles		@	R- 90
Sixty years of Finnish Medical Mission Ongerki yOwambokavango		@	R1. 50
Eholokepo longerki mOwambokavango A. Shejavali		@	R3. 00
		@	R- 70

ETSEYITHO

Eti-18-20.9.1970, aakongindjilawiliki naawilikitameki aakadhona ayehe otaa tegelelwa nenyanyu moshigongi shawo mOshatotwa, Onandjokwe. Otatu tameke pot. 7. 00 komatango. MEtihamano oku na ohungi; nakehe ngoka a hala ota vulu okuya nge iilande okakalata putse 15c. Otatu tegelele wo omuyenda meme A. Geel.

R. Salmi

Kovaendifi vovanaudu

Tete ohandi mu kundu medina la-Kristus e mu pe eenghono moshilonga mwe shi pewa. Ohandi mu dimbulukifa natango koitwa tai shikula apa:

- Omushingi waAmbulansa lidilika oikunwa.
- Kala u shi okukwafa omunhu a mona oshiponga, ile ta yehama omukifi u lili.
- Ino nyengula omunaudu.
- Kala nelongelokumwe lovakulunhu veye ngashi eesuster ile eendohotola nosho tuu.
- Pangelwa keendjovo dOmwene, osheshi ngenge tu na Jesus aishe otai ende nawa.

Omunashilonga mukweni
F. K. Shihuanda

mOniipa eti-7. 4. 70. M. Ngipandulua

Okefilonghenda ndi li po

Onda hala okupandula nokuhambelela Tate Kalunga eshi a xupifange moshiponga shefyo nda li musho, eshi omashina omonduda yetu imwe a li a topa na ame yo omonda hangika ndi li monduda ya tya ngaha. Oshiponga eshi osha li shinene shili lela shaashi onhala oya wamo mombada noinima aishe ya li mo oya pya mo nomivelo oda di kulwa po komudilo we shina eli.

Nomweengeli weameno okwa kufange mo diva nokuli. Vahapu e shi va mona osho sha ningwa monduda omo, ova li velineekela itandi kala vali kombada yedu. Ndele kefilonghenda nokohole ya Tate Ka-

ETSEYITHO

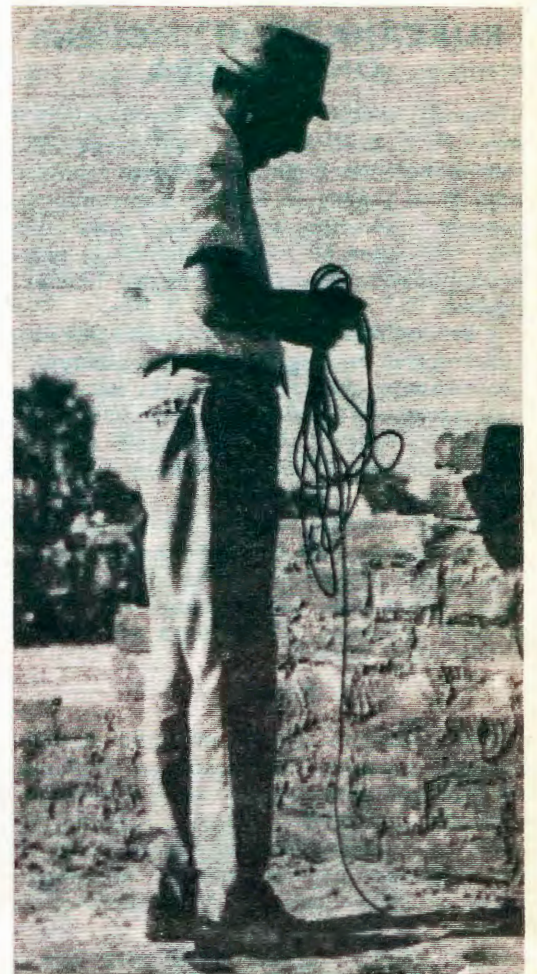
Amuhe mboka hamu ya kiilonga mUushimba natango otamu tseyithilwa kutya, endeni noombapila dhene dhegongalo oompe. Oombapila oonkulu ndhoka hamu ya nadho, dho inaadhi tulwa iihako iipe, otadhi limbilike aayakuli yeni. Manga inaamu za mo mOwambo inde ni kiinyangagongalo yeni mu pewe ko oombapila oompe nenge ndhoka oonkulu dhi tulwe iihako iipe. Shi ningeni nombili.

Gweni,
Julius lilonga, Windhoek

lunga okwa velula nge neke laye longhenda. Paife oko ndi li ndi na omwenyo na ondi li nawa kolutu. Eshi osho ehambelero nepandulo lange linene nonda hala okuhambelela Kalunga mokukalamwenyo kwa nge akushe.

Mokukala kwange mombete onda mona omakundo nomakumaido mawa omeendjovo daKalunga adja kookaume ovaholike muJesus Kristus, oo taa tunge omukumo notaa findile nge pefina lOmukuli wange. Nande nda kala ngaha mouyehame onda kala shili nehafo linene mokulesha omakundo aa. Nomomakundo omu, onde li twa mo ondaka tai ti: **KALUNGA OTA DENG E OVANA OVO E HOLE.** Nonda dimbulukwa kutya, nani Kalunga kange okuhole nge shili, nande ihandi longo osho she mu wapalela. Nonda dimbulukwa yo, kutya, efiku lOmwenene otali uya ombalila ngashi naanaa efiku olo nda hangika koshiponga ombadilila. Natu kaleni oupafi shili, inatu kofeni meitavelo. Efiku lOmwenene oli li popepi. Tu kondjeni nokukondjela omangha pe na efimbo. Onghe ame nda hala okuhambelela nokupandula nokufimaneka Tate Kalunga momwenyo wange, osheshi okefilonghenda ndi li po fiyo onena. Eimbilo 436 naPs.103:1-9.

N. G. Nambowa Engela Hospital

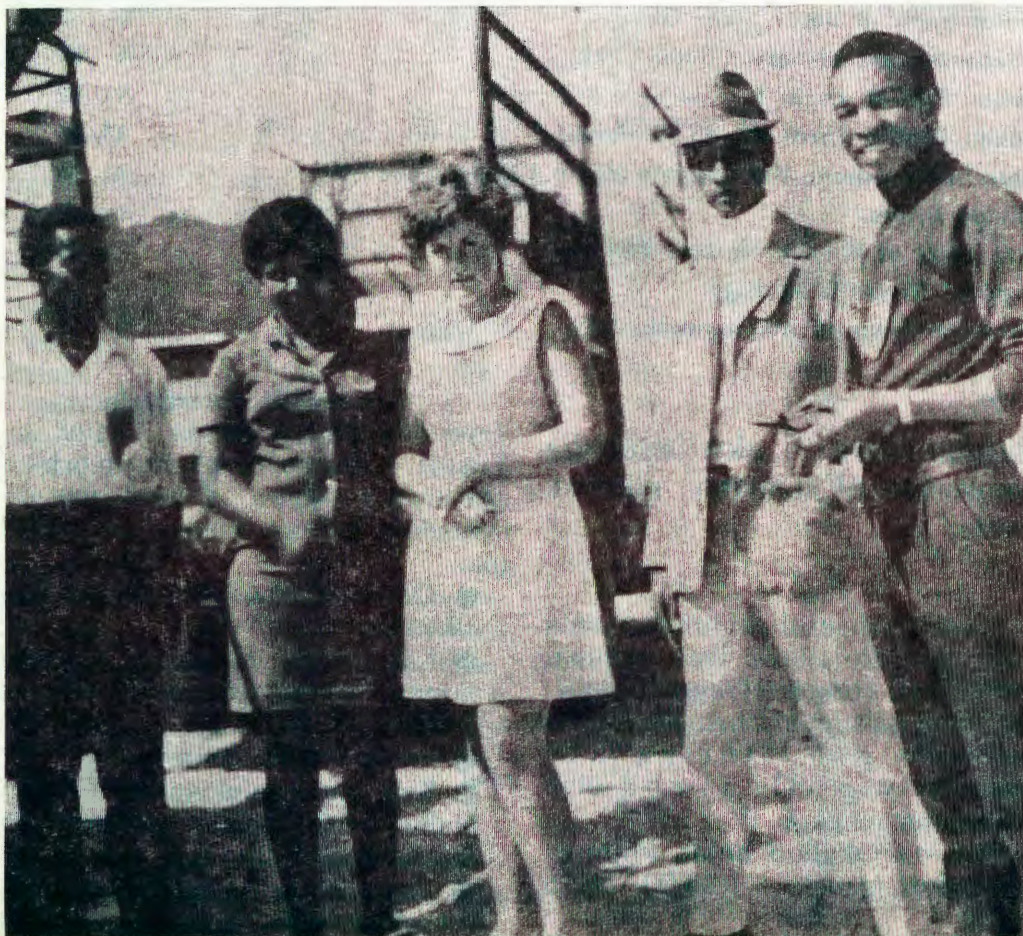


Oshituthi shomisioni manga shi li mOmandongo osha li shi na aayakuli oyendji. Omusamane nguka okwa zile kOtiwarongo, nokwa wiyauka ethimbo alihe nokulongekidha iipopitho yombako yi kale popepi naantu. Ano kehe gumwe okwa li a tula mo omagano ge mokuyakula oshituthi shika.

OMAGANO GOSHITUTHI

Omagano ga holoka ngeyi omolwo-shituthi soomvula 100:

Angula Filemon Shilongo R10-00
Thomas Kalumbu R 4-00
14.00



Mbaka aakali yometanga lyomankuma taa vululukwa po manga pethimbo lyomwiha. Osikola yokombanda mOkaliveva oya kala pamwe nongundu ndjika.

OMUKWETU

Oshifo shOngerki onkwaevangeli paLuther yomOwambokavango
Die Tydskrif van die Evangeliese Lutherse Ovambokavongkerk
Oha zi mOniipa,
Omukuluntu gwoshifo/Hoofredakteur Omumbisofi Dr. Leonard Auala,
Amushanga / redakteur Sebulon Ekandjo
Ondando komumvo mOwambo 70c kUushimba nOkavango 90c
Kombanda yomafuta R1.30.
Oondando nomambestejo naga tumwe kOmukwetu,
Oniipa, P/B. 2015 Ondangwa, S. W. A.
Oshinyolwa shuule
wondeimi 1 otashi futilwa R1.00
oondeimi 2 -"- -"- R1.90
oondeimi 3 -"- -"- R2.70
oondeimi 4 -"- -"- R3.40
oondeimi 5 -"- -"- R5.00
Oto vulu okutuma efano lyaashoka wa hala shi tseyithwe nomatumbulo wo gasha ngele ope na.

The Finnish Mission Press Oniipa
P/B 2015 Ondangwa S. W. A.