







## Otwa ithanwa pasilohenda

Elongo lyuukalunga unene lyopaLuther olya yelelwa ngaa kuusaseli waayehe ngaashi Omuyapostoli Petrus te u popi kutya: "Itungeni mu ninge ongulu yopambepo nongudu yaasaseli aayapuki," IPetr.2:5, ihe omusinda gwokuutha oongamba dhoshilonga sheyakulo itagu monika gwa yela mpoka gwa hulila.

Etestamendi Epe tali tu e tele popepi nkene ayehe aalumentu naakiintu ya yeluthwa mo meshunduko noya ningwa yo opalela ohenda yomujesus yoku ya hupithitha, ihe natango eipulo olya fa li li mpo kutya, sigo oponkatu yini po omukiintu okwa yeluthwa?

Omuyapostoli Paulus ta zimine atuhe kutya otu thike pamwe muKristus, ihe ina zimina omukiintu a kale komeho mokulonga aantu. ITim. 2: 12. Ihe nando ongeyi, otaku monika ekoko meitaalo lyooitaali yomathimbo nomathimbo, mboka taa simaneke uthikepamwe weyakulo lyopambepo molwesilohenda lyomuKristus alike, ngele komukiintu nenge komumentu.

Pwa piti ngashingeyi konyala oomvula 40 sho oshigongi shoongerki dhomuuyuni sha li sha gongala muMadras, India, moka ongerki yetu oya li ya kalelwa mo komukuluntutumuwa ethimbo ndiyaka Rev. V. Alho, moka mwa hololelwe omadhiladhilo ngaka kutya:

"Uuthikepamwe mongerki otatu talwa wa gwana ashike uuna ndoka aakiintu wo otaa talwa kaye vulike kaalumentu miilonga yawo. Onke oosikola dhuuteologi nenge dhilwe nadhi ya egulukile opo ya longithe oompito dhawo niitalenti yawo."

Shika osha hala okutya ando Kristus kee li putse miilonga ando iilonga yetu aalumentu nenge aakiintu osima yowala. IKor.3:9.

Mefano pevi omulongi **Wilhelmina Amweelo**, Niimwandi ti ilongo uuteologi muPaulinum.

Oya tameke nomulongi **Hilma Shilongo** omuna gwomusitagongalo

**Erastus Shilongo**, Elim 1968. Nuumvo oya landulwa (tala ep.3) kuAino Max, Oshigambo, sho a nyola Juniolo mOshigambo 1969, nomuwiliki gwaagundjuka mongerki ayihe **Aune Shilongo**, Ongenga. Shika otashi gandja uutoye owindji mehistolli lyongerki yaElok, naakiintu sho taa mono ompitotu ndjika.



## Shoka sha ningwa 1963

- Omuvithili gwOngerki, Efraim Angula, a hogololwa koshigongingerki a ninge omuvithi mOngerki ayihe.
- Ongerki ya gandja oosikola dhaamati nodhaakadhona metonatelo lyoshigwana pauvathano nepangelo.
- Aalongwapangi 10 ya nyola lwo-tango ekonakono lyaayakulipangi lya uthwa kehangano lyaapangi muS.A. noya piti nawa.
- Omumbisofi Dr. Leonard Auala a hogololwa a ninge oshilyo shewilikongundu lyehangano lyongerki oonkwaLuther (L W F.)
- Omukuluntutumi Olavi Vuorela a talele po Ongerki pamwe nomuvithi Matti Kopponen.
- Omumbisofi Elis Gulin, gwaSoomi, a talele po Ongerki.
- Omukuluntutumuwa Alpo Hukka a shuna kuSoomi negumbo lye, naRev Arvo Eirola a taamba oshimpwiyu shuukuluntutumuwa.
- Aakadhona yosikola yOmbimbeli mOtjimbingwe oya talele po Ongerki.
- Okangundu kotango kokutonatela omatungo mOngerki oka hogololwa.

## Omusitagongalo Leena

Osikola yomatilika okwe yi pitile 1964, o po ya yi naakuluntu ye kulndia nokwa kala nkoka oomvula dhimwe. Oya tembukile ishewe kuSweden nkoka ya ningi aakwashi-gwana shoka kokutya, inaa talwa we Aasoomi, ihe Aaswede, naamoka omugundjuka Leena Teivonen okwa yapulilwa oshilonga she shuusitagongalo.

Okutala efano oto pendulilwa ngiika omapulo ogendji ngashi gamwe ngaka kutya: Nguka otaa kala wo omuwiliki gwegongalo nenge ta kala aluhe omusita omuyakuli ashike? Ota longo oshilonga she uuna ndoka e li po kee shi omuhokanwa nenge nuuna ndoka a yi mondjokana, nenge omolweyakulo ndika ke na okuhokanwa?

Oomvula mbali dha piti Ongerki yaElok oya tameke ehistolli epe monkatu yokuputudhila aakiintu melongo lyuukalunga "Teologi." Inashi yela natango kutya, onkatu ndjika otayi ka hulila peni, ihe ngoka a hala okutunga uugumbo we mombepo onkene ngaa kee shi okukeelelwa.

Shono tashi yele kutse nena osho shoka kutya, mpaka Ongerki oya humu komeho monkantu yokuyelutha mboka yi itala yo yene kutya, kaye na unene oshilonga mokati kaantu, nenge ngashi aantu ye ya tala owindji kutya, mbaka kaye na uuthemba wokuninga sha.



**Wilhelmina Amweelo**



Okuyoololela yalwe iilonga yopambepo manga yalwe inaa gwana oku yi longa, Ongerki oye shi kondjitha nale uuna ndoka ya langeke aalongikadhona moshilongayakulo shawo.

Memengerki muSoomi oye gumwe a putudha aakiintu oyendji melongo lyuukalunga e vule oongerki dhilwe muuyuni, nando ina yapulila nando omukiintu gumwe uusitagongalo. Oyendji twa yakulithwa komayakulo gawo mpaka mOwambo pawino ye yi na yopausita. Natango oye li mokati ketu.

Omwanangerki naye wo ke na uudhigu wokupula nkene mbaka ye na okuningwa konima yeilongo lyawo. Omayakulo mOngerki ogendji ge ya gwanena. Ihe kombinga onkwawo omwanangerki nge te shi tala okwe shi pumbwa okuya yakulitha ya yapulwa, naashoka otashi ulike ekoko neithikameno lyOngerki. Ihe shika itashi gwana. Okwi ithikamena itashi ti okuza momusinda gwaakwaLuther, nenge oku umbila iinima iidhigu komapepe giilyo yayo mbyoka yu u-



Aune Shilongo

vite itayi vulu oku yi humbata, oshoka o-lye gwomaamwameme aakiintu ye li ngashingeyi mOtimbingwe iilongekidha okuyapulilwa oshilonga shoka? Ihe eyamukulo nando li kale, "aawe," onkene ngaa omuntu to ti komeho ka ku shiwiki.

Ongerki yaSweden ya mangeluka mokyapula aakiintu. Amerika ota dhiingoloka nasho noshi na aapopili oyendji kutya, kamu na eimbo musho. Ihe Elok, oye Ongerki ongundjuka, ota tala wo oomwamemengerki puushiinda nokokule ndhoka ta katuka pamwe nadho, nokulongela kumwe. Ndjika oyo ondjila yokukala muukumwe woongerki (Ekumene).



Hilma Shilongo



Aino Max

## Kovayakuli aveshe mOngerki yaKristus nomoshiwana shaKalunga

Oilonga yoye ondi i shii noudjuu woye. Ndelenee ondi nondjovo naave, eshi wa efa ohole yoye yotete. Dimbulukwa omo we liteeka ove u li dilulule.

Okuhepekwa kwoye noluhepo loye ondi li shii ndelenee oove omuyamba. Ondi shi shii oko wa kala, oku ku noshipangelapundi sha satana, ove no wa dama edina lange. Ouna vamwe ovo va ama komalongo a Bileam, oo a longa Balak okutela ovana va Israel omwiyo.

Oilonga yoye ondi i shii, nohole yoye neitavelo loye ondi li shii. Ndelene ondi nondjovo na ove, eshi wa mwena, wa tala ashike omwalikadi ou Isebel, te li luku omuprofeti, nota longo ovanhu nota hongolola ovamati vange okuhaela. Ou nedina wa fa u nomwenyo nowa fya. Penduka, u pashuke!

Oove wa diinina ondjovo yange, no inoli kala edina lange. Ame yoo nda hala ndi ku diinine, ndi ku xupife mo mefimbo lemakelo, olo tali uya kombada yedu alishe.

Oilonga yoye ondi i shii. Ove u he fi omutalala no u he fi omupyu, onda hala ndi ku kunge mo mokanya kange.

Tala, ohandi uya diva, diinina shili eshi u shi kwete. Lesha mEhololo, momakapiteli 2,3.

Tu li taleleimo nomomudo ou, 1970, twe u pewa oshali.

Ndimlonga.

## Nda hala va kale apa ndi li

Jesus meilikano laye loupilisteri ota holola oshinge shaye shexupifo lomunhu poluhaela. Okwa pewa ovanhu kuXe e va xupife mounyuni woulunde. Omolwefyo laye komushiyakano omo ekulilo lomulunde lapwa. Omo oshivelo sheulu sha yeulukila omunhu, ou a tambula Jesus, Jesus eshi a wanifa oshilonga eshi nota shuna kuXe oko a dile ita shuna aeke, ndele ota shuna naavo vokedu e va ninga oshihakanwa shaye. "Oye okwa nyeka eehamba novananghono omauta avo, nokwe va tula poluhaela, eshi e va finda muye nefindano longhalu." Kol. 2:15. Jesus ota ka aluka nondaka yomokule ya udika keembinga adishe dounyuni "Ame onda pewa epangelo alishe meulu nokombada yedu."

Paife osha yela ava va tambula Jesus nepandulo laye, ova kufwa mo medu ova londa naJesus. Ondjovo yaKalunga tai shi yelifa ei tayi ti: "Kamu fi vali ovaenda novanailongo omwa ninga ovakwao vovayapuki novaneumbo laKalunga." Efes. 2:19. Efindano laKristus ole ku lumbakanifa novakwaulu nande oli li kedu, omwenyo woye owa londa naJesus. Onghe oto dulu okuhepaulula pamwe nomuyapostoli Paulus eshi ta ti: "Kristus Oye omwenyo wange." Eil. 1:21. Ovaku- liliwa aveshe kape na ou e li humbatele omwenyo waye mwene. Omwenyo wavo oKristus.

Nande oku na vahapu vashashwa va ninga vaKristus, natango ove li humbatela eemwenyo davo vene. Eemwenyo davo inadi londa na Jesus, onghe otave di doladola noku di yandja mounyuni. Oshinima shi li ngaha otashi ulike omwenyo meke lomunhu ou a hepa. Tala eshi wa popya omwenyo nau kane owange mwene. Tashi ti ediladilo olo to longifa u he na sha nomwenyo no to u ekeleshi mounyuni u kane pamwe nounyuni. Kali na ekwatafano pamwe nehalo laKalunga.

Omukwetu diladila omwenyo ou na ondilo puKalunga nande ou li tale ove owongaho Jesus Omona waKalunga okwe uya kedu e ku xupife moushima woye, a wanife ehalo laXe. Ehalo latate oleli paha kane nande umwe, ndele aveshe va xupifwe. Jesus a wanifa ekulilo la aveshe nena ota londo keulu ta yi noshihakanwa sheemwenyo dovakwaunyuni nowoye yo okwe u tambula lungama uhe u kufe meke laye. U danauke nawo momahalo ounyuni ou oto ka kana. I. Nhinda



## OVANAFIKOLA NAVA LONGEKIDWE

Eshi ho lekele ounona voye oho va lekele ngahelipi nge tava i kofikola. Oho ti: Kadulikeni, nye inamu vaka?

Heeno, elekelo oliwa shili olo, ndelenee omolwashike okaana itake li wanifa?

Ovakulunhu vamwe kave shii ondilo yofikola nande. Umwe ta lekele omona a ye keefikola, natu tye Okosekundofikola. Eshi ta ende mondjila ota futu nee omatuwa nope-dimo yo. Oku na yo omahangano ovanafikola, nge e li mo oku na okuyandja oiyandjiwamudo yamo. Navali koima ota ka panga ko ngo. Ngashi kOshigambo eehani nhatu, Ongwediva, eehani hamano.

Omunhu okwa pewa nee 70c, ou e lwete a longa okwa yandja nee

R 3.00. Ai, tala tate, omunhu oo oshikutu ke na, ofewa nomaadi ihaa tumbulwa, nghaku ihai popiwa. Ota pumbwa Ombibeli nopena.

Ino kumwa omonakadona woye nge te li futu ye mwene komunashihauto omu a enda, omumati woye nge a ningi ombwiti yaVenduka. Ou nee ina ya, ta li eengunga mou-shiinda nande ku shi shi. Ye ta ti. "Nghi piti."

Ovanafikola vamwe ove na ombu omo va nyola oinima ve i pewa. Oomeme nootate, longekideni ounona opo va haye momayeleko. Shiimba oho hala okufya omu-tima omona woye nge a ya kOrwacana, nde nge e li pwoove ito mu kwafa sha. Va hafifeni, opo ve mu hafife yo.

Tava-ti-va-mona-

## Ekundo kooitaali ayehe

Ooitaali aasimanekwa molwa Jesus Kristus, otandi mu kunditha etumbulo ndika "Jesus Kristus Oye tuu nguka nohela nonena nosigo aluhe."

Oye tuu nguka a kala ketameko lyeshito lyuuyuni, Oye Ohapu yaKalunga, Oye oshilongo shegulu sha longekidhilwa ooitaali petameko lyaayihe.

Tu taleni ekwatathano lyajesus nooitaali ye. Olyo enene shili nge tatu tala tango omwiitaali Abel yaAdam ota popi nOmuwa nando a sa. Kalunga mwene ota tumbula: "Ewi lyombinzi yomumwanyoko otali kugile ndje mevi. Shika otashi ti omwiitaali nando naye mevi oku na omwenyo muKristus. Ngashi a kala najesus muuyuni, osho wo ta kala naye nomokusa. Ayehe mboka yi itaala ndje kaye na mpoka taa si sigo aluhe.

Meyelu lyaNoa, ayehe oya sa, ihe Noa a lombwelwa ashike: Itungila ongulu u hupile mo negumbo lyoye." Nando ongulu ndjika okwe yi tungu oomvula dhomathele gatatu, eitaalo lye inali kana. Osho eitaalo lyooitaali ayehe li na okukala lya kola nomomaudhigu gongashingeyi.

Ombimbeli tayi kumagidha ooitaali ayehe: "Inamu ekelahi eitaalo lyeni li na ondjambi onene." Ooitaali one aahogololwa, oshoka eitaalo lyeni kali shi lyeni yene, aawe, omwe li pewa omagano. Oshoka Omuwa mwene ta pendutha momuntu eitaalo, ohokwe niilonga. Omuwa ta hololele omuntu oondjo dhe, opo omunandjo a dhimbulule uunkundi we, e ta dhimbulula unene uyapuki wOmuwa. Moses okwiihololelwa nokwa dhimbulula oye omunandjo muudhipagi. Ihe Omuwa ota hedha komunandjo

note mu lombwele: Hukula ko ongakuku koompadhi dhoye." Shika otashi tu ulukile nkene Omuwa ota oopaleke omunandjo e te mu longitha: "Inda u ka lombwele Farao."

Ooitaali oyo ookuume kajesus naamwayinathana. Ote ya lombwele: "Ongame onde mu lombwele ayihe, omupiya iha tseya shoka omwene ta ka ninga. Natu taleni shili nuutalambambi shoka Omuwa ote tu lombwele: Aaprofeti ooitaali oya lombwelwa Jesus shoka te ke shi longa ngele e ya kombanda yevi. Oyo oyi itaale noya popi ngashi kuume kawo e ya tumu. Johannes yaSakaria okwa tumwa kujesus e ki igidhile ooitaali eitedhululo lyedhimo po lyoondjo. Oyendji oya hempulula oondjo dhawo noya ningi aakwanezimo lyajesus.

Pulakena ano nonena ewi lyomwii-gidhi sho tali ti: "Tala ko onzigona yaKalunga tayi kutha po oondjo dhuuyuni. Jesus tuu nguka a talelwe kumbeyaka, Oye tuu nguka nonena tse ooitaali tu noku mu tala, nota ka talwa wo kumboka taye ke ya. Oye Jesus a kwatakanitha aakwanevi ooitaali naakwanegulu, notatu mono oshilongo shegulu sha kulukile kevi. Oye oshili, nota popi moshili sho ta ti: "Mbaka taa gwanitha ehalo lyaTate oyo aamwameme aakadhona naamwameme aamati, noomeme. Ano okwa yalula aalumentu naakiintu naakuluntu naanona, aayamba naathigona mboka ye mu itaala. Oyo aakwawo shili, oshoka oyo aangandjawa naathigululi pamwe naye. Ooitaali mbaka oya lombwelwa otaa ka pewa oonkondo dhokegulu. Sigo onena ooitaali otaa pewa oonkondo ndhoka,

## Jesus e vule Johannes Namene

Omuqwaniilwa nakusa Eino Johannes (Kambonde) okwa li a popi muuwa we kutya: "Ngoka te ya megumbo lyandje itandi mu tidhamo, oshoka kandi shi omukwaniilwa gwokuholama aantu yandje. Ngoka a hala okumona omukwaniilwa ne ye."

Itandi pumbwa okufatulula sha kombinga yomukwaniilwa nguka, oshoka a tseyika koyendji. Oohepele niilema oya kwathwa kuye. Nopethimbo lyuuwehame ekwatho inali zimbuka.

Ihe ope na gumwe e vule Kambonde, Omukwaniilwa gwaakwaniilwa Oye Jesus. Okwa thikama pokati kuuyuni nota igidha ta ti: "Ngoka te ya kungame itandi mu ekelehi." Joh.6:37. Okwa hala ayehe ye ye kuye, opo ya taambe omwenyo. Kiilema niitiningili ota ti: "Ileni. Kaaloloki ota ti: "Ileni amuhe hamu longo nomwa loloka, ngame notandi mu pe evululuko. Mat. 11:28-30.

Omuntu okwa longa uulunde we a mana, a vulwa, a sa enota nota tala koombinga adhihe a tale ngele ku na ngoka ta vulu oku mu kwatha. Ano elaka ewanawa, lyombili nolyehupitho olyo ndika: "Ileni kungame," Jesus ta ithana.

Natu yeni kuye, Oye ote tu yakula. Natu yeni pekota lyomushigakano gwe, Oye ota yogo po oondjo dhetu adhihe. Aalunde ayehe okwa hala oku ya yukipalitha nombinzi ye.

H.E. Mateus

notaa landula Jesus shaa mpoka taa kala po.

Mbeyaka oya li ya fumvike Jesus oshoka omumwayina, oya li ye mu mono sho a yumuka, noyi ihololelwa kuye nokwe ya lombwele: "Ka lombweleni aalongwa yandje naa ye kuGalilea, oko taa ka mona ndje."

Ooitaali aasimanekwa, Jesus okwa ti: "Ongame ondi li pamwe nane." Okwa kala pamwe nooitaali ye mondjila yokuEmmaus, mongulu ye edhilwa po uusiku nopefuta lyaTiberias. Jesus osho ti ihololele wo ooitaali yongashingeyi, nenge mboka taye ke ya.

Uuyuuni otau kondjele iilongo yawo nando oyo otayi ka hula po, ihe ne ooitaali omu na okukondja shi vulithe mpoka, oshoka oshilongo sheni osha kala ko nale, notashi ka kala ko, oshoka osha kola shi vule egulu nevi. Aamwameme, kundweni ano kelaka ndika, Jesus Oye omwenyo gwetu. Omukondji pamwe nane.

Lydia Urho



# Aalukonda taye mu kundu

Komuwiliki gwaagundjuka yOngerki ayihe tate Kleopas Dumeni, kaa-wiliki yaagundjuka miitayingerki ayihe, kaatonateli yiitayi, kaayenda yetu amuhe mboka mwa zile mUushimba, kookuume amuhe aaniipopiwa mwe yi etelele koshigongi mwa zile kokule nopopepi, otatu mu kundu otse ookuume keni Aalukonda.

Sho twa lesa oshinyolwa sho-muwiliki gwaagundjuka yOngerki ayihe otwa dhiladhila Omuwa okwe mu thikitha nawa komahala geni. Mokupita mo mongerki yakuku Nakambale, omwa li mwe tu thigile uyamba woohapu dhaKalunga.

Ano tse otu li nawa Aalukonda, tu li nawa nee. Omwa li mwa ningi nawa sho mwi ile po. Kombinga yegongalo, Olukonda, omolwo-mathigathano, tatu popi sha yela lela kutya hamolwokukandeka ando twe ku tseya, ihe osha ti owala Aaheke ya thitikile ootha moshanda.

Nena ya ningi ngaa ngiika shi thike poonkondo dhawo. Olukonda inalu kondela owala omatamba, ihe nomamanya omo ge li. Aaheke taleni tuu ngele mwa hala mu yelekele tu tsakanereni koshilongo shaMushindi gwaKantene, oshoka shi hole oonyama nomagadhi ga votokela. Natu hulileni manga mpaka.

Omuwa ne mu gwedhele Ombepo yevuliko, megumbo, megongalo mOngerki nomoshigwana Ps. 119:9.

**Johannes Gweendama.**

## Egalikano petililo lyOmbepo Ondjapuki

Ila huka Mbepo Muyapuki. Oonte dhuu-yelele wo nadhi ze megulu okuyelitha Kristus moomwenyo dhetu. Ila he yoohepele, ila omugandji gwomagano, eadhimo lyoomwenyo dhetu. Ongoye omutalaleki gwashili, omuyenda omwaanawa gwoomwenyo dhetu. Ongoye omuhuhulukithi omutoye. Ongoye evululuko miilonga etalaleko muupyu, efudhitho moluhodhi. Ongoye uuyeleye uuyapukilela. Uuthiga woomwenyo dhaadhiginini yoye. Kwaa na oonkondo dhoye kaku na ngo a gwana a pwa. Yoga shono sha nyata, tutika, yenyeka shono sha talala, aludha, konga shono sha kana. Pa aadhiginini yoye oonakukwiinekela omagano omayapuki, koleka eitaalo tu pa ehulilo li na elago, tu pa enyanyu lyaaluhe. Amen.

**I. P. Simon Kamati, Ontananga,** ota thikitha omapandulo ge kooku-me ke ayehe ya li ye mu pe iikwatha, iimaliwa nenge oohapu dhaKalunga oku mu tsa omukumo, manga a li a lala moshipangelo sha-Nandjokwe. Ote mu kundu nehalo ewanawa.



**Abraham Haileka**



**D. Nakasole**



**Stefanus Shou**

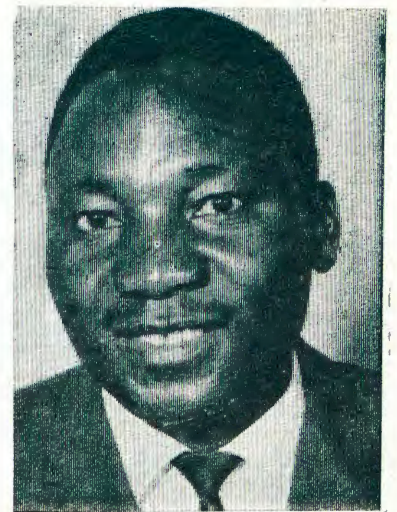
Omapenda gamwe gomaawiliki yaagundjuka mUushimba.

Omuwiliki **A. Haileka** ota tseyika nawa moshifo shOmukwetu komalongo ge he ga tumine aaleshi ayehe. Okwa zile megongalo lyaKalongo nokwa longa e-

thimbo ele mOvenduka. Oyo na **J. Shikongo** a zile megongalo lyaTsandi noha longo mOmukutu gwaKaisha. Omugandjindunge gwaagundjuka

**I. Neumbo** azile mOnguediva, kOvenduka oya tseyathana nawa na **D. Nakasole** ngoka a kala kOliindili ha zi megongalo lyaNaanda.

**St. Shou** aagundjuka yaTsandi ohaye mu yuulukwa nge e li mOshilongo shOkakambe ta hwameke oondjimbo pamwe na **E. Mutilifa** ngoka e hole kOhalushu.



**Joel Shikongo**



**Israel Neumbo**

## Eengalo dimwe domOushimba 1969

Omongwa, Swakopmund .....	R 2.00
Khan mine .....	R 1.50
Brandberg-west-mine .....	R 3.32
Klein-Aub-mine .....	R 6.09
Uis-mine .....	R 4.16
Luderitz .....	R 4.05
Otjiwarongo .....	R 3.60
Trekoppitjie.....	R 1.49
Omongwa neefalama daSwakop.....	R 1.88
	<b>R28.09</b>

Omwene na nangeke nouputa omake aavo va tulile koshilonga shaye. **G. Max**



**E. Mutilifa**





Maria Amakali Omunayena

Omulongi Maria Amakali ote lihongo mofikola yokombada yaFort Hare mO-republika. Eshi a pita oulongi moseminali yaKahao, 1959, okwa ka twikila kofikola yokombada kOshigambo oko a hanga fiyo onghatu yaMatrika 1964, no 1966 okwa honga oseminali kOkahao. Konima yefimbo eli okwa ka ya nee kOrepublika yaS.A. Ohatu teelete eyakulo laye nomukumo.

### MAPUMULO

Ehambelelo kombinga yOngerki yaElok oli li opo eshi tai tale ovanyasha voshiwana Kalunga ote va topolele omaifano mahapu meembinga adishe deyakulo lomunhu. Omunyasha Obed E-mvula, Ogongo, okwa hokwa okukonakona ehongo loukalunga unene. Omudo 1969 nande ina kala moipundi youteologi mOtjimbingwe, okwa kala te lihongele mopoosa yofikola yokombada youteologi yaMapumulo, Natal, nde ovahongi vomOtjimbingwe ve mu kwafa yo unene. Neudo Emvula oku shi lile omutumba muMapumulo ta konakona oilongwa yaye. Kwinya ova ya ko nekanda ekwao Ruben Shangula, Etilyasa, vo tava hange ko enyakwa Absalom, Hasheela Ongenga, a ninga ko odula imwe. Omwene ne va punike moilongwa yavo.



Obed Emvula



Josaphat Shanghala

### JOSAPHAT

Omugundjuka Josaphat Kashindi omutekulu gwomusitagongalo omukulupe Sakeus Iihuhua, Nakayale. Oyendji taye mu dhimbulukwa okathimbo okafupi sho a kala meyakulo lyOradio Owambo. Osikola yaamati okwe yi pitile 1962, nokwa pewa onzapo yuulongi 1965. Kashindi edhina lye etiyali, oku shi okutsa aagundjuka omukumo ya longe iilonga yawo. Oye okwe ya wilike manga ta longo osikola yaanona pOnakayale 1966-67. Konima yomimvo ndhika okwa ka tsikila natango elongo lye mOngwediva moka a pewa onzapo yaJunior 1969. Kashindi okwa kala omunashipundi gwongundu yehangano lyaailongi aakriste. Ngashingeyi okwa tameka iilongwa ye yuuteologi mOtjimbingwe.



Josefina liniko oye wotete okakadona take lihongo mofikola yombibeli mOtjimbingwe, ka dja kOngerki yaElok, kOwambo. Josefina okwa dja meongalo laKahao nde okwa pita St. VI. 1967. Omolwehalo laye la kola muye okulihonga nawa Ombibeli okwa indila omhito ei kongerki nde okwe i pewa 1969. Fiyo onena ota twikile elihongo eli monghatu yokomesho muFebe-skool i li natango mOtjimbingwe. Naye ota mange sha pama.



Josef S. Hamutele, Walvisbaai, ota ti: Ye ota hambelele unene Kalunga eshi a mona omhito yokumangu-luka moupika woikolwifa. "Onda konakona Omukwetu eshi ta ti, osho ye mwene a tonga nokukumaida ovo ve li natango moupika ou. "Konakoneni eendjovo daKalunga moshifo shOmukwetu." Ote mu kundu medina lOmwene.

Efano pevi aapagani naashunimonima pokati kOnayena nOkankolo taa pulakene nokutala ehokololo lymumati a kanene, mohungi ndjoka ya ningilwa komukuluntutumwa Mikko Ihamaki omasiku ngaka.





## Anni Saari

Opwa uvika onkundana kutya omulongi, efolo Anni Saari okwa mana oondjenda dhe muSoomi eti-21.11.1969. Oye okwa valwa 23.2.1901. Manga a li omulongi omugundjuka, okwa tumwa kOwambo 1924 nomumvo gwa landula a hokanwa komulongi Heikki Saari. Oyo ya longo ethimbo ele mOwambo. Lwahunina oya shuna 1947 kuSoomi.

Meekulu Anni Saari okwa longo nuudhiginini, iilonga mbyoka e yi ithanenwa kOmuwa.

“Dhiginina sigo okusa, ongame notandi ku pe oshishani shomwenyo.” (Ehol. 2:10).

## Omolvashike ihatu li eemhuku?

Ope na oudu wa lukwa **Plague**; oo Ovawambo hava ti oudu womhuku ile okatumba. Owa konakonwa nowa monika kutya, ohau di meemhuku domaludi avali, eemhuku odo da kula hadi monika lupu mOushimba, naado dinini tu tye domOwambo.

Owo oudu mwii unene notau eta efyo diva, nou na olutapo, hau tandavele kexuli, komutima, nokoitiyanafyo.

Ohau holoka diva shimha tuu we ku kwata, tashi dulika tau ku twaalele nokuli momafiku 2 ile 5. Oto u didilike ngaha:

Eshi u na outalala, to kungu, omutwe tau pwatauka, ku udite ko nawa, hano wa fita omatwi, ondaka tai fiti yo, elaka tali kukuta. Tashi dulika u na oshimela sha handuka ile u kwetiwe kombato neenghono. Hauxuuninu efyo.

Eemhuku odo hano oshiponga sha kula nande odi li po da fa ombelela iwa nokuliwa. Natu di livangeke shili, nongenge twe di mono pomukunda, nashi lopotwe diva kepangelo, opo di dipawe po diva. Osho yo fye tu na oku di dipaa nokuxwika.

L. Hauala

## Omulongi wofikola yetu a ya kedu lavo

Omulongi wofikola yovayakuli vomoihakulilo meme Irja Soikkeli mEngela, okwa ya kuSoomi yavo, eti-11.3.1970. Okwa li a diinina shili oilonga yaye youhakuli, neetundi a manga kumwe. Ndele aishe oya enda nawa. Okwa longa ovayakuli okushiiva oilonga yavo, ndele osho e shi findila muvo osho okulandula ondjila yOmwene noku mu longela.

Onda hala okuhalela omulongi ou **ELAO NEYAMBEKO LA TATE KALUNGA** mokukalamwenyo kwaye.

Klaudia U. Haimbodi

## EDU LA KAKAMA MUTURKYE

Ekakamo lidjuu ledu ola ningwa mu-Gedz, Turkye, ohani ei, novanhu 3,000 ova fila moshiponga eshi. Ovanhu 90,000 ova fiwa ashike poluhaela nomaumbo 5,701 okwa hanaunwa po filu.

Mulstanbul, okwa hokololwa kutya ekakamo monhele oyo ola udika le linyenga lwo 2,100 moule weevili 9. Eshi osha li eponga li kumwifa, noli tilifa.

## OINENENIMA IMWE OYO YA NINGWA 1969

8 Apili: muKaaapstad omunaudu okwa twikwa omutima nofiyo pefimbo limwe.

12 Apilili: Ngoloneya waSuidwes a yandja ewiliko lEangelo lEembashitela kOle-pubilika.

1 Juli: lwotete eeterolis oda pwilikinwa momhangu muSuidwes.

20 Aguste: Dr. Phillip Blaiberg, nakukala nomwenyo mule konima yokutwikwa omutima mupe, okwa xulifa oweenda waye.

29 Septemba: Ekakamo ledu lindjuu muKaaapstad.

1 Desemba: Eenghundana dotete moradio da holoka melaka lovalaule.

25 Desemba: Dr. Walton Lillehei, muNew York okwa twika omunaudu omutima mupe nomapunga avali pefimbo limwe. Naye yo okwa fya.

## APOLLO 13

Osheendo oshititatu shAayamerika shokuya komwedhi osha zi kelungu lyombwa sho osheenditho shawo osha dhengwa kemanya lyontumba. Uuyuni auhe nowaakomunisi owa yi megalikano onakutuka noshituki shoka Kalunga e ya hupithe meso, nosha ningwa shili. Egalikano ohali lundulula ayihe. Olweendo olwa galukile ondjilakati.



Irja Soikkeli

## ETSEYITHO LYOKONANDJOKWE

Ongundu “Suid-Afrikaanse Verpleegstersraad,” Pretoria, oya tseyitha muJanuali nuumvo kutya, mboka ye na okutaambelwa moskola yuualithi oyo **mboka ayeke ya pita Matrika (St.X)** nenge **mboka ye na onzapo yuuyakulipangi**, ano aantu ya tya ngaaka oyo ayeke taa ka taambelwa moskola yuualithi kOnandjokwe.

Kombinga yoskola yuuyakulipangi ishewe etseyitho otali ti: Mboka ye na okutaambelwa moskola yuuyakulipangi oyo mboka owala ya **pita ostanda VIII**; ano Junior, haamboka ya piti owala ostanda ontihamano we nando.

Omolvokuninga omaindilo otaku dhimbuluthwa wo kungoka to ningi eindilo lyokutaambelwa moskola u dhimbulukwe omukalo gwokunyola omaindilo nkene gu li. Na dhimbulukwa wo kutya, omombapila ya tya ngiini omuntu e na okunyola eindilo lye nando kali shi lyokutaambelwa moskola.

Omukuluntuskola  
Onandjokwe



“Tse oombuku otatu ka lya, odhi na ombelela ombwanawa,” osho uunona wa yamukula sho wa pulwa omolvashike tau dhana noombuku.



## OKU HOLE OSHILONGA SHE

Omusamane Sakeus Paulus, okwa kala oomvula dhi vule ngashingeyi 20 sho a longo miilonga yOshinyanyangidho shEhanganotumo IyaSoomi. Oye omunandjungu miilonga ye aluhe, nokee hole okuhepitha nando oshimwe shomuyo.

“Ta, ethimbo ndiyaka sho twa tameke mpaka olya li edhigu noonkondo noshilonga osha li tashi pula oonkondo odhindji. Kombinga yandje onda longo unene oshilonga shokushunitha oondanda miiketha ngele dha pu okulongithwa, oshoka ethimbo ndiyaka kapwa li manga eshina lyoku dhi teleka.”

“Osho oshilonga sha li po tashi pula ondjungu, oshoka aantu aluhe taa tegelele iiketha yi kale yi na oondanda dha gwana, opo ya vule okuhogolola, ihe onda li ndi shi hole unene,” osho tate Sakeus a hokolola. Okwa gwedha ko ta ti:

“Ohashi vulika wo omuntu u longe oshilonga shokukweya eshina lyokunyanyangidha ngele nani ngoka he shi longo ina lala po. Shika otashi pumbwa omuntu wa kola nawa, wa lya, ihe ethimbo ndiyaka iikulya kaya li wo hayi longekidhwa ngaashi tashi ningwa ngashingeyi pomutenya.”

Tate Sakeus gwoomvula 53, ohe ende oomaila hamano okuya kiilonga ye esiku kehe, a hokana noku na aakadhona yatatu. Pethimbo ndika oye omuhogololi gwoondanda he endebele, nomolwe Omukwetu iha tokelwa unene.

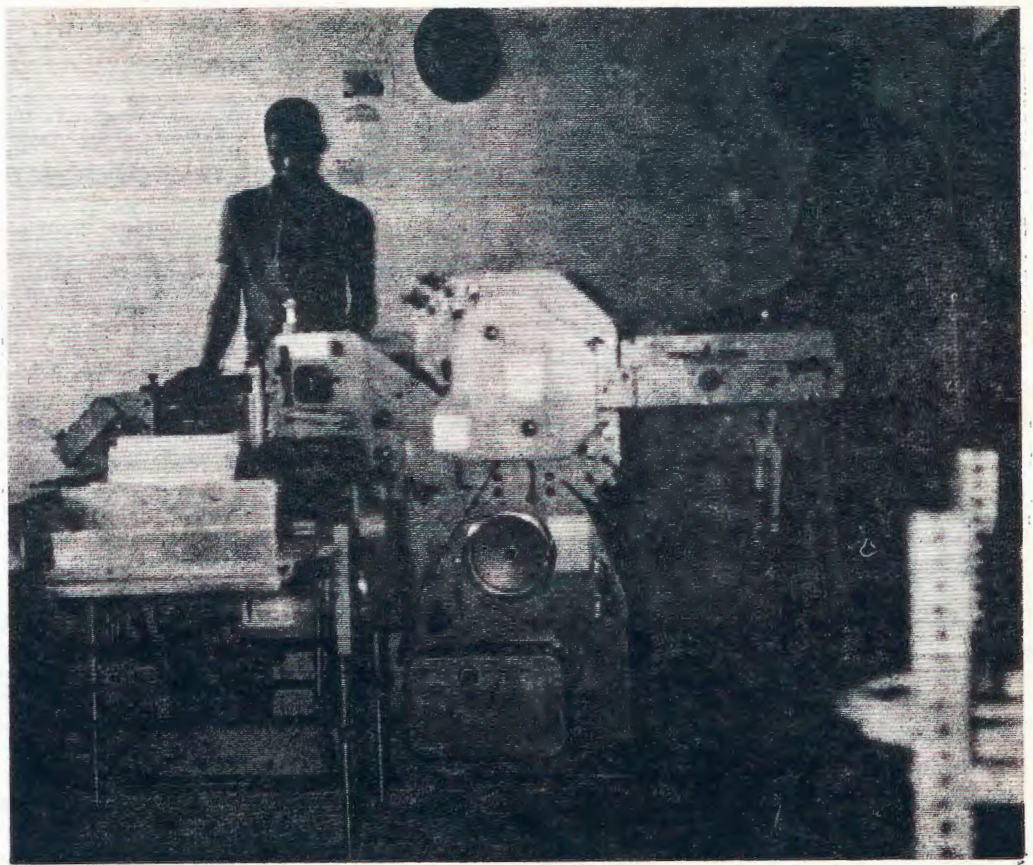
### OPOSHEELO E LI

Tango Kalunga okwa shiti omuntu oshifetha she, a pangele evi, lyo tali minikilwa ketango nokomwedhi. Aantu sho ya indjipala, oya dhimbwa omushiti gwawo. IMose 11: 1-9. Oya hala okuninga aanandunge, ya hala okuvula Omushiti gwawo.

Oya dhiladhila Omuwa itetu mono, ohaluka ashike tu li pu ye koonkondo dhetu yene. Omushiti okwa teya po oshungo yawo, okwa piyaganeke elaka lyawo noondunge dhawo.

Osho pe li ngashingeyi wo. Okunwa kwa vuka, uunkolwi noluhondelo. Mokutala onkatu yaanandunge, oto kwatwa komadhiladhilo goshungo ya li tayi tungwa ethimbo ndiyaka. Ihe omushiti gwoye oposheelo e li.

Oto ka uva mbala aantu ya tu-



Oshinyanyangidho osha taamba ishewe omuyakulingerki omupe musho ngoka ta longo neendelelo enene okugonya oombapila. Motundi ota vulu okugonya oombapila 1000. Eshina ndika olya kotha R3197.60. Shimpa ngaa wa tala, kokule ihaku thikwa ongula.



Tate Sakeus Paulus

la komwedhi, manga ngoye to li, to nu, to landitha, to landa noto hondele, ohaluka egeelo IyaKalunga Iye ya, manga ino li tegelela. Evi Iya hulu po.

Omuwa Jesus ota popi kutya, iilongeni omayele komukwiyu, oshoka ngele oshitayi shagwo tashi zizi mu kale mu shi shi okwenye kwe ya. Mat. 24:32-33.

Miina Nakaziko

### LUNGAMENA OULUNDE

Vahapu otava danauka noulunde, naana ngashi omunhu ta danauka nongwe, nde ovanhu va tya ngaha ove li moshiponga nande kave shi lwete. Oulunde ou otau ka ninga eenghono nde tau va li noku va hanauna po filu. Ondjabi youlunde oyo eflyo Rom. 6: 23.

Ino kala moulunde woye ino danauka nao. Jesus e uya a xupife ovalunde. Ombibeli tai ti. “Keshe ou ta itavele, ota mono edimo lo-matimba.” Aaron N. Ondima

### OMUKWETU

Oshifo shOngerki onkwaevangeli paLuther yomOwambokavango  
Die Tydskrif van die Evangeliese Lutherse  
Ovambokavangokerk  
Oha zi mOniipa,  
Omukuluntu gwoshifo/Hoofredakteur Om-  
mbisofi Dr. Leonard Auala,  
Amushanga / redakteur Sebulon Ekandjo  
Ondando komumvo mOwambo 70c kUushimba  
nOkavango 90c  
Kombanda yomafuta R1.30.  
Oondando nomambestelo naga tumwe  
kOmukwetu,  
Oniipa, P/B. 2015 Ondangwa, S. W. A.  
Oshinyolwa shuule

wondeimi 1	otashi futilwa	R1.00
oondeimi 2	-"	R1.90
oondeimi 3	-"	R2.70
oondeimi 4	-"	R3.40
oondeimi 5	-"	R5.00

Oto vulu okutuma efano Iyaashoka wa hala shi tseyithwe nomatumbulo wo gasha ngele ope na.

The Finnish Mission Press Oniipa  
P/B 2015 Ondangwa S. W. A.