

# OMUKWETU





## TU LONGENI, OSHOKA ETHIMBO LYA PU PO

"Akutu, nda lulilwa kongundu yandje kayi shi sha, nomumvo gwa pwa ko nale."

"O, hulitha meme, mboka yandje nomutaleli sho a li mo omasiku ngaka onda li owala nda sa ohoni. Ihe ngame walye, itandi pulwa ko hoka kiinona tayi ka ndopa."

Ndhika odho dha li oonkundathana dhaEmma naSaara pokafudho kominute 10.

Aalongi mbaka kaye shi aanyengwi mokulonga kwawo naataleli yooskola oye shi shi nawa. Shimwe ashike hashi ya kudhile nokuya imba ya aadhe oshilalakanenwa shawo osho epangelo (organisasie) yoposkola yawo, onkee omumvo kehe ihapu pitwa poskola yawo.

Kombinga yaanaskola yo yene oshiponga shika kaye shi lwete manga nonando olwindji ye shi lombwelwa mootundi. Oonkali otadhi ka tameka owala petopolo lyoonzapo. Nomapopyathano omadhigu otaga ka holoka owala esiku lye-hulitho.

Okatatathimbo kahupu ko ngashingeyi kaalongi nokaalongwa okokulonga ashike pamwe negalikano. Aalongwa oyendji ngashingeyi oya dhimbulula shili kutya, uudhano nomapopyagano mootundi otayi ke ya sitha owala ohoni.

Aalongi mangeni oombunda kumwe, opo aankundi yopooskola dheni mu tale nkene tamu ya yambula po.

Aavali momagumbo nayo wo oya nyanya mo. "Aawe, gwaandjetu ngele ina pita nonuumvo onda ti opuwo. Itamu zi we oshinima tashi mu kwatha moskola muka."

Omuntu okwa yemata shili. Ihe Oskar ngoka ina gwana manga mekoleko. Ita vulu moofalama, ye ita vulu pokandingosho. Ano aana nату ya ulukile ngiini kutya inaa nyengathana? Epulo ndika enene, tse tu taleni nkene tatu li monene eyamukulo. "Oomboka taa kunu nomahodhi, oyo otaa ka teya nenyanyu lyopombanda.

## KONGENI OMWENE

Omwene ote tu kumaida ngaha: "Ou ta finge ohoni moipafi yovanhu ame ohandi mu lidimbike moipafi yovaangeli vatate meulu." Omukwetu penduka kwa sha eluwa lefilonghenda le ku tendela. We mu konga tuu we mu teelela tuu? Efiku lOmwene oli li popepi. Oilonga yetu otai ka hololwa mefiku letokolo. Konga Omwene, endelega manga efimbo u li na.

F. Ngh. Hainghumbi

# OONTOKOLWA DHEPANGELONGERKI

1.

Epangelongerki lya konakona nokukundathana naalongwa mOoseminari mOngwediva nomOkahao mboka taa ka ninga aalongi omumvo tagu ya, uukriste nomakotalongo gawo, nolya dhimbulula ayehe oya pita nawa nolya zimine ya longe uukriste mooskola dhoshigwana. Epangelongerki otali pandula wo ehalo lyawo ewanawa okuyakula Ongerki yawo no-shigwana shawo notali ya halele omayambeko meyakulo lyawo.

2.

Omwevangeliste Stefanus Iteua a holoka mEpangelongerki nolye mu kundu sho a galuka moshilonga shomokati kiilyo yOngerki yetu mehalakano mUushimba, moka a li a tumwa kEpangelongerki. Epangelongerki lye mu langeke a kale omwevangeliste molukanda lwaNdjondjo (Oluno) nomOnguta. Ota tameke eyakulo ndika eti-1.11.1969 nondjambi ye otayi ka uuthwa komeho.

3.

Omwevangeliste Filemon Nashihanga ngoka a yakula iilyo yOngerki yetu noyoshigwana mOmalukanda gopOndjondjo nomongerki yOnguta, sigo a uuthwa kEpangelongerki lyeti-28.11.1968 moshitokolitho oshiti-7 a kale ta yakula wo megongalo Oshitayi, Epangelongerki lye mu langeke a kale Omwevangeliste mEgongalo Oshitayi, okutameka 1.11.1969.

4.

Omulwaadiakoni aalumentu mboka taa ka pita nuumvo mEngela. Epangelongerki otali ka gongala mEngela eti-28-30/11/1969 li ka konakone nokukundathana nayo iinima yoshilongayakulo shika oshinene, noya yapulilwe moshilonga shika eti-30.11.1969, Kalunga ngele e shi hala.

5.

Ombilive yomwevangeliste Immanuel Kamho, Swakopmund ti indile a galukile kOwambo pehulilo lyomumvo tagu ya, ya leshwa noya ziminwa.

6.

Ombilive yOmumbisofi omukuluntu mumemengerki tatekulu Martti Simojoki tayi holola, nkene ehiyo lyaE L O K omolwoshituthi shehambelelo shEtumo shoomvula 100 mOwambo lya taambwa nenyanyu, ya leshwa nEpangelongerki otali pandula komagalikaneno gamemengerki.

## AANA YAKALUNGA

Aana yaKalunga oyendji oya hala nokuhalelela, ya mone eyambeko lyedhimopo lyoondjo dhawo adhihe, nesindano, nenyanyu lyomeitaa-lo noonkondo dhokulongela Kalunga.

Olwindji twa yematele uukukutu woomwenyo dhetu notwa yuulukwa, tu dhimbulule shili Omuwa Jesus Kristus a kala mutse.

Ohatu galikana, ihe otatu dhimbulukwa nkene twa za einekelo nale, nokonyola itatu vulu we okutegelela, tu mone shoka twe shi indile. Epuko oli li peni?

Omauvaneko gaKalunga ogo omanene nomawanawa. Otse inatu limbililwa oonkondo dhe, dhokugwanitha omauvaneko ngoka, no-kugwedhela po oshindji nopumbyoka hatu yi indile notu yi shi. Hakutya e na oonkondo ashike, ihe okwa yuulukwa wo oku tu yambeka. Onke ano ngele inandi pewa sha nena epuko olyandje mwene.

Esiku limwe otatu indile tu pe-we omagano gaMbepo Omuyapuki. Kehe omuna gwaKalunga a pewa nokuli Mbepo Omuyapuki omagano: Omuntu ta pewa Mbepo Mu-yapuki meitedhululo lye.

Mbepo omuyapuki ita thigipo oitaali. Kamu shi shi, one otempeli yaKalunga? 1Kor.3:16:

Tomas S. Kanyama

## OMUKWETU TA TSEYITHA

Sho twa katuka nale onkatu mokufuta iifo yOmwetu, onkee twa hala tu mu dhimbuluthe natango mokwiinyolitha omadhina geni opo mu pewe iifo petamekolela lyomumvo tagu ya.

Kehe ngoka ta mbestele Omukwetu ne shi ninge mbala manga ethimbo inaali pwapo. Oofuto odhi li ngashi dha kala nuumvo, ano:

MWambo 70c.

KUushimba 90c.

Kombanda yomafuta R1-30

Tuma embestelo lyoye kuyele opo u kale gwomongundu yaatango. Oto tegelelwa nenyanyu.

## JESUS OMUSINDANI GWOMAMAKELO

Omamakelo ga adha Omuwa Jesus okwe ga sindi sho ta tumbula aluhe, "Okwa shangwa" nenge "Okwa nyolwa."

Omusaseli gwetu omukuluntu o kwa makelwa miinima ayihe, ihe oku uvitile uunkundi wetu ohenda nokwa hala oku tu kwatha tu sinde omamakelo ngele tage tu adha na ngele tatu mu ithana ngashika kwa shangwa: "Ngoye u ithane ndje esiku lyuudhigu woye, ngame notandi ku hupitha ngoye, e to simaneke ndje."

Omamakelo itaga ende nomukalo gumwe aluhe, ihe oku na omalupe gi ili nogi ili mokumakelwa. Oku na omukalo gwondjala molupe lwokweehama.

Oku nomukalo guuyamba molupe luuwanawa mumwe nesimano nokutangwa kaantu, ihe muagehe, Omukulili awike a sindi.

Inandi tseya omolupe lwa tya ngiini omamakelo ge ku adha, ihe epulo olyo ndika: "Okwa holokele tuu esindano nenge owa sindwa? Pamwe olwindji nopendji twa sindwa omolwashoka inatu longitha oohapu dhaKalunga dhi kale omatati negonga okuumba satana.

Omuwa Jesus ta ti. "Okwa nyolwa." Omuhindadhi oha sindwa koo hapu dhaKalunga nomushigakano gwOmukulili.

"Omuyapostoli gwOmuwa ota ti: Ihomatekeni iikondjitho ayihe yaKalunga mu wape okuthikamena omakotokelo agehe ga satana."

Ha moonkondo dhoohapu dhe tu yene, nenge moondunge dha nepala nodha simana, tatu sindi omamakelo gomuhindadhi, aawe, oJesus Omukulili gwetu te tu sindile ngele tatu mu ithana.

"Ngoye u ithane ndje esiku lyuudhigu woye, ngame notandi ku hupitha ngoye e to simaneke ndje."

Pamwe ku na mboka omamakelo ge tu sindi notwa ningi aana yekano. Natango oku na ompito neha okuhedha kuJesus mOmbinzi ye. Oondjo dhetu dhi dhimwe po. Tse tu monunune oonkondo oompe ngele tatu taambululula Jesus Omusindani momamakelo. Opo ihe ndhoka dha ti: Ihe oyo mboka ye mu taamba okwe ya pe oonkondo ya ninge aana yaKalunga."

Oonkondo odhokusinda omuhindadhi nomamakelo ge. Tu kale tu dhi na sigo Omuwa te ya.

H. Shongolo

## Ongame tandi ku galula ko

Momumvo 1966 onda adhika kelaka lya za kaakuluntu yOngerki yetu Elok tali ti, kutya, okwa monika oluhepo lwaamati yOngerki yetu mboka taa longo moomina dhaa-Transvaal S.A, oshoka kape na ngoka ta sile oomwenyo dhawo oshimpwiyu kombinga yuuhakumwenyo; opo ndi ye ko ndi ke ya kwathe.

Shika osha halukitha omwenyo gwandje omolwomahokololo omawinayi haga zi koshilongo shoka. Ookuume kandje yamwe oya lombwele ndje ndaa ye ko. Ihe yamwe oya ti kutya, etokolo nandi li thigile momake gaKalunga nokupula ehalo lye.

Onda galikana pafupi nonda pe wa eyamukulo kutya, nandi ye ashike. "Ongame tandi ende pamwe nangoye mokuya notandi ke ku galula natango." Shika osha dhimbulutha ndje etumo lyaAbraham, nonda tokola shili okuya.



Oiva Shikwaya ngoka a li kuLibanon

Onda laleke egumbo lyandje nomagongalo gomoshitayingerki she-tu shaKavango nonda yi mela lyondjila sigo moMusilikazi mehala moka hamu yoololelwa aantu ya ye kookomboni dhi ili nodhi ili.

Moka oya kambadhala okuthitika ondjila yandje, ihe ongashi o hapu tayi ti: "Tala, onde ku pe o sheelo she egululwa noka pe na ngoka ta vulu oku shi egulula nenge oku shi edhila po." Ehol.3.8b.

Kalunga okwa egululile ndje o sheelo nesiku eti-19.9.66 onda thiki mokomboni moka ndi na okulonga muLibanon. Ongulohi ndjoka otwa hungile pamwe naakriste yOngerki yetu. Konyala kehe gumwe a thikama nokupopya, ihe ayehe ota e ta ashike epandulo sho ya ziminwa komaindilo gawo. Shika osha ulukile ndje kutya, nani aamwameme oya kala ethimbo noku-tegelela nokugalikana Kalunga.

Onda tsakanene nomuhongi omundowishi P. Sandner nomuhongi omuzulu Sem Simonroth. Oya li ya tsakanene ndje nyanyu.

Ilonga yo yene oya li ngeyi: Molwashoka onda li nda pewa iilonga iyaali, mombelewa yoomina, naashoka nde shi endele oshilonga shopambepo. Omaandaha sigo etihamano okuza ontiheyali yongula sigo ontiyali omombelewa. Opo ihe 6.00-9.00 yuusiku otandi longo oshilonga shopambepo moskola yeshasho nenge yekoleko nenge motundimbimbeli nenge okweenda nomagumbo metalelopo.

Osondaha tatu ningi omalonge-lokalunga pomahala gi ili nogi ili. Ihe epandulo lyandje enene, oshoka iyenditho otayi monika nuupu. Aantu yevi ndiyaka oko ye li ashiki nonando taa tila uyuyapuki wOmbimbeli.

Oye na omapulo ogendji omadhigu. Ngashi okupula ondjukithi yaKalunga nomolwashike te ya tala ye li moluhepo. Nenge otaa pula oheli mpoka ya gama. Ihe oko ye li wo taa itaale Jesus ongOmu-hupithi gwawo, notaa vulika kuKalunga.

Oyo taa simaneke okunwa, olwiiho lwiimaliwa, uunganga nuumpulile. Otaa dhipagathana opo ya mone iimaliwa moondjato dhoonakusa nenge oonguwo ombwanawa ye dhi landithe po, opo ya mone iimaliwa. Mookomboni otamu adhika unene Aakwanyama, Aakavango, Iimbundu, Aankumbi nAashihokwe, ihe Aakwanyama oyendji ye vule ayehe. Ihe mwaayihe otandi hambelele Kalunga sho a pele ndje ompito ndi yakule mpeyaka mokati kaamboka ya sondjala shili yoo hapu dhaKalunga. Iponga oyindji hayi monika mokati kawo otayi ya dhimbulutha okukala popepi naKalunga kawo.

Otaa pumbwa omambo gokulesha opo yi ilonge okutseya Omukulili gwawo Jesus Kristus. Omaudhigu gi ili nogi ili oko ge li, ihe Kalunga okwa yambeke ndje mu ayihe. One ookuume ketumo otandi mu galikana mu dhimbulukwe momagalikano geni oshilonga shoka tashi longwa muTransvaal, omolu aamati yetu mboka taa longo mo.

Otandi pandula ongerki ndjoka ya tumine ndje nekwatho ye li yakulitha nalyo egumbo lyandje. Tangi wo kune ookuume mwe tu kwathele. Tandi pandula wo Kalunga sho a galula ndje nawa ngashi e shi tile.

Oiva Shikwaya

## ONGERKI - MUNKARAPAMWE

Oilonga yongerki yomuKatutura Nkarapamwe, Rundu mOkavango oya hovelwa paife nomukangha wongerki ou li pokupwa.

Oilonga oyo i li mepashukilo lomushamane Heikki Mustaniemi na omushamane Antti Kahempe oya hovelwa, opo ku monike ongerki oyo tu kwafe ovalumenhu ovo tava fiipo edu lavo notava ka konga oilonga kOushimba. Hano otai yakula ovanailonga ngashi ongerki yopOnghuta mOwambo tai yakula.

Ndelene oku na yo ovanhu vahapu ve li notava ka kala mohalukanda oyo yopoRundu ovo yo tava ka yakulwa kongerki tuu oyo.

"Oshinima otashi ka kala odolopa yakula i na ovanhu vahapu, notava teelwa ve uye kongerki, osho tate Antti a hokololela omukundaneke. Ongerki oyo ya tengenekwa i ka kale noipundi tai wana ovanhu ve fike lwopo 500, omupashukili woilonga tate Heikki okwa ti ku-

tya, shuude otai ka pwa konima yodula imwe netata.

"Ei otai tungwa omushingo umwe u lili, inau monika mo nale mongerki yaElok," osho tate Heikki a weda ko kefatululo laye.

Oimaliwa R15,000 oyo ya hovelifa etungo olo oya dja kuMemengerki muSoomi.

Okuyandja oshinima shiwa shi dule okutambula.

## AAVALI AASIMANEKWA

Omumvo ogu li kehulilo nkoka ku na omanyanyu nomayeme. Omanyanyu oga shike? Omayeme oga shike?

Aanona aluhe sho taa tondoka taa yi koskola, oye na okupewa sha shoka ye shi ilongela uule womumvo aguhe, kehe gumwe shi thike piilonga ye.

Olye ngo inaa hala enyanyu li kale aluhe megumbo lye, sho omwana ta tsikile komeho omumvo kehe noongundu?

Gwaayetu oku na omutse omukukutu. Hasho, iho mu pe ompito megumbo. Opo enyanyu li kale po aluhe kukehe gumwe otu na oku ninga ngiini?

Napu kale elongelokumwe pokati kaavali naalongi naasita oku

tunga aanona.

Okanona naka thiminikwe okuya koskola. Naka pewe okampito okumanguluka kiilonga, opo ka tale shoka ka thigilwa koskola komulongi. Omuvali kehe na tale ngele omunona oha lesa tuu megumbo.

Na kongelwe olamba ngele tashi vulika, opo a kale e na uyelele ethimbo lyongulohi, unene pethimbo lyomakonakono.

Sho pe na aanona yamwe yaa na noskola, onawa ngele taa uvithwa ko omupondo gwoskola. Naa pewe iiholelwa mbyoka tayi ya uvitha ko. Ngashi kombinga yetilokalunga nokukonga iilonga, kutya oolye ye na iilonga iiwanawa. Ngoka a momona oskola nenge ongoka inee yi na?

(Tala etsikilo pehulilo iyepandja)



Aanona aadiginini naapenda mboka wo ye na aakuluntu ye na ehalo nelalakano aanona yawo ya ndjange oyo haa mono ompito okukala montanda. Aamatyona mbaka oya li ya kala mOupundi kOnguediva numvo. Omusamane Seppala okwa li omuwiliki gwawo momaudhano.

## Oshoongalele shovafita muKoichas 18-23.8.69

Koichas ofaalama yOngerki i li emaila mbali netata koushilo waMariental, oko kwa li kwa ongala ovafita vomOushimba (Rynse Sending).

Omupashukilishitaingerki waNdonga T. Shipanga pamwe nomuhokololi, ova ile yo ponhele yOngerki yetu. Oshoongalele osha li sha ongalwa kovafita ve fike 60. Ovatiyane, Eembastela, Ovanama, Ovatakumi nOvawambo ava hava longo mOushimba. Omuwiliki washo oye S. Boois (Moderator) oye a yeulula oshoongalele nondjovo yaKalunga Eps. 36:8.

Omulongi wovafitalongwa mO-tjimbingwe a eta oshipopiwa shaye tashi hokolola ehongo lofavita novaevangeliste. Okwa holola yo kutya, itava ka tambula we vali ovahongwa ovape ovo inaava pita Matrika ile Junior ile shapu nava kale va pita oulongi. Pwa kala elipulo linene ngehe taku monika ovahongwa va pita meengudu da tumbulwa. Kwa tokolwa Ongerki i ninge ekwatafo liwa neefikola omo tamu monika ovahongwa ovo, no-ku va fatululila oshilonga shoufita noshOngerki yavo.

Oshilonga shoudiakoni sha kundafanwa nouladi nokwa tokolwa ku dikwe ofikola youdiakoni mO-tjimbingwe omudo tau uya (1970). Omufita umwe e liyandja moshilonga eshi nehafo. Oshoongalele she li kwatelela ketumbulo lomumbishofi wetu vati e li popile moshoongalele mOushimba eshi a tya: "Ongerki nokuhe na oudiakoni oya fa ashike omunhu e na okuulu kumwe."

Kwa kundafanwa yo oikolwifa oyo ya pula efimbo lile ku hangike etokolo. Kwa tokolwa ku longekidwe oshoondaha yonhumba mOngerki oyo tai kondjifa oikolwifa. Omaudifo efiku olo naa kale taa kondjifa oikolwifa.

Moshoongalele twa koneka kutya, omaudjuu nomanyeme tu a kwete mOwambo oo tuu e li yo mOngerki yomOushimba. Oshoongalele sha xulifa nOuvalelo Uyapuki. **F. Shikomba**

(AAVALI AASIMANEKWA, etsikilo)

Oshoka monkatu ndjika omo omunona ta longekidhilwa okukalamwenyo kwe kwokomeho.

Aanona inaa ethiwa ya ka konge iilonga noondingosho, aawe, naa dhigininwe momagumbo, manga ye li po aashona.

Kondjela okukalamwenyo kwomumoye kwokomeho.

S.T.Amuthenu

## Komuhanga kwa gwedhwa noketanga lyaamati kwe ya gumwe

“Otse oshigwana shAawambo otwa nyanyukwa notatu hambelele Kalunga sho he tu tumine aakwathi taa gwedhelwa kaayakuli ooyakwawo, opo ya yakule oshigwana shetu sho tatu taamba nena mohungi ndjika omundohotola Hallamaa nomukulukadhi gwe, mboka ye ya ye tu yakule,” osho omusita gwomoshipangelo tate F. Ashipala a tumbula mokutamekitha ohungi ongulohi yeti-4.9.69.

Omundohotola Tapio Hallamaa neefolo lye meme Eeva Hallamaa oya thiki kOnandjokwe eti-4/9/69 sho ya thigi po Osoomi konima yoshiwike shimwe. Oyo aakuluntu yaanonamati yaali. Olli (11) naPanu (9), mboka inaaya thika manga kOwambo ihe ya pitikwa koskola kOshiwakopo.

Omundohotola nguka oye omukotheki gwaavu taa tandwa, osho oshilonga she moshipangelo moka a li ta longo kOsoomi - ihe muka ota longo ngaa iilonga ayihe ngashi ompumbwe yi li po.

### Okumona shihapu ohaku hapupaleke eendunge

Onawa unene ovanafikola mOwambo va hala va hapupaleke eendunge davo, eshi hava talele po Oushimba, unene omina yaTsumeb. Ngenge to ningi eindilo molwongudu yoye i talele po apa, ninga omaindilo avalu. Limwe okukOmu-fala kOndangwa, likwao shangela ovahona vomina ove mwene, manga ku na eehani 3, ino fikama.

Eindilo lokOndangwa, opo u uye nombili kOushimba, likwao lokovahona vomina opo ve ku pe enyamukulo kutya, ove ku teelela. Osho shiwa okutala muTsumeb oshike? Omomalumbo omina, ino tuma ko kOmufala oye e kwiindilile kovahona vomina aye, ove mwene to va nyolele. Komufala winya oteku pe ashike omhito u tauluke eengaba.

Nge to tu nyolele kOmbinga yeongalo, tu hololela ovanafikola voye ove fike peni omolwonduda yokunangala. Vali, opu na eembiya dokuteleka noiyaha. Opo u hange twa konga eembiya dokuteleka nosho tuu. Ino dimbwa yo oku tu longekidila oikulya yopamhepo. Omaimbilo omahokololo. Paife eongalo letu ola ndjanga, omolwomaudifo eni mwe tu udifila metalele po leni, iyaloo! Omwene ne mu ndjangeke ee.

M. Hauuanga

Omukulukadhi gwe meme Eeva Hallamaa oye omudhiginini gwomambo giiniwe (economist). Tse otatu ti: Komuhanga okwa gwedhwa ko ketanga lyaamati okwe ya gumwe.

Ndohotola Hallamaa sho a pulwa shoka she mu pe omukumo okuthiga po Soomi, evi lyomatale omayuvi, nokuya kOwambo yuupyuu, okwa yamukula ngeyi: Shika kashi shi oshinima shetu yene okumona omukumo nehalo okuya nkuka, aawe, osho oshOmuwa mwene.

### OINYOLWA NAI LESHWE

Ovagreka (Grieke) ove hole okuwedela omahokololo mape a hafifa ile taa eta oluhodi. Pamukalo ou ove shi nee shihapu.

Ou e hole kulesha hano ota likola shihapu. Ino mona nima ngashi ho ti, oku na ashike eendunge delongo. Hano ngenge okwa li nee ina mona oileshwa, ye ke na edi dokedalo, mbela ngenge oto teke ko tuu omeva?

Ohatu mono oifo ngashi “Die Suidwester, Suidwes-Afrikaner, Omukwetu, Eume naikwao iyadi ounongo nomapukululo. Nge ou hole okulesha oto liamene, nde to amene vali oshiwana shoye, ou iha lesa ota ngumauna etungo la halika okufikama.

Limonena hano imwe yomwai nde to i lesa. Oto ndungikwa nde to paiduluka.

L. K. Nhgiiitukwa

### OYE TU PAPUDHULA

Methimbo ndika aantu oya kala nokupakaleka omakutsi gawo omolwetsiko lyomutima, nuunene omuntu sho a katuka onkatu nokulyata oompadhi dhe komwedhi.

Pomutaambathano gwaSeptemba naKotoba otwa pewa omasiku gonkumwe onene. Aalongwasita yokOtjimbingwe oya li ye tu talelepo, nelalakano lyawo okuhunga oomwenyo dhetu noku dhi ukitha kuKristus.

Otwa ulukilwa sha yela nawa kutya, Kristus ina sila sha shi ili ihe oondjo dhetu adhike. Oondjimbo niinyandwa ayihe yomOmbimbeli oye tu thindile pekota lyomushigakano gwaJesus. Oomwenyo dhetu odha li dha longwa shili.

Ompito ya tya ngeyi twa li twe yi pewa kesilohenda otatu yi hambelele Kalunga tate nOmukulili gwetu omuholike nOmbepo Ondjapuki omulongindunge gwetu omunene.

J.Eliakim

Moshipango she Jesus okwa ti: Ongame ondi li pamwe nane omasiku agehe shaampoka tamu yi. Ano kelombwelo lyaJesus, omutumi omunene, otwa mono omukumo nguka okuya tu yakule moshimpungu she mokati kAawambo.

Aayenda mbaka otse Aawambo otatu ya halele eyambeko lyaKalunga li ya landule moshilonga shawo oshidhigu mokati ketu. Kalunga na kale ekwatho lyawo.

### OMUFIKAMENI OMUDIININI

Immanuel Hangodji Shikwaya omupolifi womina e na eedula 53, okwe lineekelwa meongalo letu, okwa fikamena ounona 9, kwaaka ekwete paife, opo tadi kOngerki aka fikamenene okaana oko. Oku hole nee oku va faneka, opo a kale ta tale omafano avo. E hole oku va ilikanena te va tale. Na unene a hala a koneke olupe lavo momafano.

Ngenge hatu kala novafikameni omapenda, nena otu na elao. Ope na shili omapenda o, ta longo mupolifi ile mepangelo o, taa kondjele oshiwana koshipala shaKalunga meilikano. Hai ti: Omupolifi wongerki yetu, oho kondjele shike kombinga yoshiwana? Ove omupolifi, to polifa to poleke. Wi ilikanene oshiwana shoye noshilonga shoye, owa tulwa po kuKalunga, u dulike kuye u leshe alushe Ombimbeli. U dulike yo kovakulunhu have ku longifa. U kale, omukriste omulinekelwa meongalo leni, u kale hoi kOuvalelo uyapuki.

Hai ti: Ovapolifi voshiwana shange, oshike tamu ende mwa limbililwa? Taleni Jesus Kristus oye eenghono deni, nouyelele mondjila yeni. Vali, ovahona ovo have mu longifa moilonga oyo, oha va kala mOngerki Oshoondaha, na ove hole oukriste. Ova kwafa Ongerki moudjuu wayo. Ngaashi Immanuel ou, omupolifi ta ilikanene oshiwana shaKalunga.

Na alushe ota kala mOngerki Oshoondaha. Nonge ta kala moilonga youpolifi, omadiladilo a ye otaa pangelwa kuKristus. U kale omwiilikaneni to ilikanene ounona, oshiwana, epangelo, Ongerki ovapolifi vakweni. Omwene ne kwaamene. Ino kofa kala oupafi. Ino tila Omwene oteku pe oshilongo shomeulu. Rom 13: 1-7.

Malakia Hauuanga

## OSKOLA YAATEKULIGU-MBO MENGELA

OTAYI TAMEKE, ngele Kalunga e shi hala, muFebuluali 1970 mEnongelo lyaayakuligongalo mEngela. Ofuto yoskola R10.00 moka tamu yalulilwa wo iikulya nihondjwa komukadhona kehe nenge iilya oolata 14.

Omukadhona na ninge eindilo lye nokutuma kOskola yaatekuligumbo kEngela oombapila ndatu:

- 1) Ombapila yegongalo (a kolekwa)
- 2) Onzapo yahugunina yoskola (oongoka a piti okuza ostanda 2 sigo opombanda oye ta taambwa, ihe ngoka inaa pita ostanda 2 ita taambwa).
- 3) Eindilo lya nyolwa kuye mwene.

Omaindilo taga tegelelwa mangwa omwedhi Desemba inaagu sa. Oomboka ya ziminwa otaa ka tseyithilwa nombapila muJanuali 1970.

“Oohapu dhaKristus dhi kale dhu udhilila mune, longathaneni, pukululathaneni noondunge adhihe.”  
Kol.3:16

Matti Seppälä

## EKUMAGIDHO

Aakwetu aaholike, tu dhimbulukweni kutya, otse oondjendi dhowala kombanda yevi ndika, onkee ano natu kaleni twi ilongekidha, opo twaa adhike keso ohaluka. Onawa wo ngele tatu ikeye pomahala omawinayi mpoka eso lyombadhilila hali holoka wo mbala.

Aamati oyendji mokweenda kwayo momalukanda ya kanitha omwenyo dhawo, oshoka inaaya isila oshimpwiyu. One Aawambomati miilonga, kotokeni shili.

Kondja shili shaangoka polwoye mwene opo u sinde uuhalu weliko nowonyama, ngoye u mone ihe ethikilo li na omwenyo. Tala, omwenyo gwomuntu itagu hupithwa kegwanu lyeliko lye ihe okesilohe nda lyaKalunga uuna omuntu mwene i igandja mombinzi yaKristus.

F. Tomas

## OU NA ONGUNGA

Ovakriste vahapu ovaneumbo inava kufa mo oshiima eshi. Oomeme nootate omwe tu tuma komanongelo momaongalo elili noku lili. Ndele omwa dimbwa oshinima shimwe shi na oshilonga, eshi mwe tu lekela.

## Shoka aagundjuka ye shi pewa moshigongi kOlukonda

Omusamane du Preez okwa li a kala moshigongi shaagundjuka mOlukonda. Okwa li wo a etelele omakundo ga za kiilyopangelo.

Okwa popi nomuthindo mokufatululila aagundjuka ngeyi:

“Oshi na ondilo onene sho ongerki tayi ipyakidhile aluhe nitungamwenyo. Iikwambepo otayi tungu, tayi putudha notayi kalekepo oshigwana. Ethimbo otali endebele nomuntu ta dhimbwa okugalikana nokuli, oshoka ota thiminikwa kwaambyoka tayi ende mehumokomeho. Oshigwana shi na ongerki nelaka nuunene sho hashi putudha aagundjuka pambepo nena otashi kala shi na omwenyo.”

Okwa fatulula wo ehumokomeho nkene tali ende moshigwana ashihe. Ashihe eshi fatulula osha ningi elongo ewanawa kaagundjuka yetu.

## EKUNDO LYOMUMBISOFI

“Agundjuka yaKristus otandi mu kundu nomwenyo gwandje aguhe nonda hala nokuhalelela omvula yomayambeko yi lokele momwenyo dhene. One oonkondo dhoshigwana nomukumo gwongerki. Tandji pandula wo unene sho ndi shi shi omwa kala nokugalikanena ndje moshiponga shandje; ano onda galulilwa kevi omolwomagalikano geni,” osho ewi lyomuthikithi gwomakundo gomumbisofi omusamane P. Shipena lya li tali ngelengendja kombanda nomeni lyetala moka aagundjuka naayenda yalwe ya li ya gongalele mo pethimbo lyoshigongi shawo mOlukonda.

## Shoka ongerki noshigwana tashi tegelele maagundjuka

Oshipopiwa shika shali shi na okwetelwa oshigongi shaagundjuka kumumbisofi, omuyevangeliste gwongerki tate E. Angula okwe shi eta papufi ngeyi:

Kristus kaagundjuka ota tegelele ko:

a) Esimaneko lyaakuluntu nokuvulika kuyo, ngashi tu na oshipango oshitine shoka tashi popile aagundjuka nohaakuluntu.—Jesus okwa vulika kaakuluntu ye—ano oye oshiholelwa noshaagundjuka wo. Okusimaneke ondilo yuugundjuka. Oku na aagundjuka oyendji mboka ya dhimbwa notaa dhimbwa ondilo yuugundjuka wawo — Jesus ta tegelele ukadhona woye nuumati woye u ende muuyogoki koshipala shaKalunga noshaantu.

b) Oku na aagundjuka yamwe inaaya dhimbulula ondilo yiilonga.

Omugundjuka kehe nando na kale a longwa nokwa adha onkatu yasha, ota tegelelwa a kale a simaneke iilonga kehe yomegumbo no sho wo yilwe mumbyoka omuntu ti imonene ondjambi yasha. Ihe oku na ngaa mboka ya dhimbulula ondilo yiilonga, oshoka owala haa kongo iilonga pomahala omawinayi ge na omamakelo nando haa galikana “Omuwa ino tu fala mehongololo.” Omugundjuka, kala u na omukumo nontseyo okuyanda iiponga.

c) Kristus ota tegelele aagundjuka ya kale aasindani meyeleko kehe unene pethimbo ndika li na omayekeko gopendji ngashi giikolitha.

Mepopitho lye tate H. D. Namuhuja okwa tumbula kutya, opo oshigwana shi kale po nashi kale shi na aagundjuka. Muudhigu, moluhepo nomuupu, aagundjuka otaa tegelelwa ya kwathe, oshoka omugundjuka esipa lyuulumbu. Aagundjuka otaa tegelelwa ya kale ya ndjanga, yo ye li omuko gumwe.

Ngashi omadhiladhilo ga kola ha ga kala molutu lwa kola, payeletumbulo lyoshigwana shontumba, osho wo aagundjuka yetu taa tegelelwa ya kale ya kola momadhiladhilo, opo ya ninge aagundjuka haiigundjuka.

Aagundjuka oyendji oya tala nomeho omanene oonguwo ndhoka tate Namuhuya a li a zala, ombayikitha negala, ihe ya li wo ye na enota lyokuuva omolwashike e dhi zala nokwe dhi mona ngiini.

✦ ✦ ✦ ✦ ✦ ✦ ✦

Luhapu ovakulunhu ovafila onunona oshisho eshi tashi shikula apa: ova yandja oimaliwa yokulikwafa moidjalomwa, yokufutula eendjila, yokufuta oikulya nokeshe tuu eshi twa hepa. Ndelene komesho yaishe mwa dimbwa oku tu pa ongalo. Ou na ongunga osheshi ove mwene u na okuyandja ongalo kokamwoye.

Ovaneumbo lungameni oshiponga eshi mu shi dude mo manga inashi ningila mo omidi munye.

Lungama tate ile meme u ha lekele Rauna na Paulus va ye keefikola fimbo ino va pa eeshende dokutula mongalo yomeongalo oko tava i.

E. Nd. Ndevahoma

## Suid-Amerika naAfika oga li kumwe nale

Omuprofesori omusamane J.J. Bigarella okwa li a kala iiwike yimwe muSuid-Afrika naSuidwes okukonakona oombinga dhoombepo, uukwatya woombuga oonkulu noompe nomuthika gwevi nomamanya nkene gwa tya.

Prof. Bigarella ota hokolola kutya, Suid-Amerika naAfrika oga li ge li kumwe nale konima yoomvula omamiliyona 350 dha pita. Omolwo-makakamo ga li ga holokapo nale, onkee omavi ngaka gaali oga tameke okwiinyenga kashona nakashona sigo ga topokelele. Etopoko ndika inali ningwa momasiku gamwe ageke, ihe osha pula ethimbo ele kwa tengenekwa kutya, pamwe omimvo omamiliyona 125 dha ka pita.

Shoka tashi yelitha nawa kutya, omavi ngaka oga li kumwe, osho uukwatya nomutungilo gwomama-

nya gomusuid-Amerika naAfrika noontuntu ndhoka dhi li mefuta lyaAtlant, Tristan da Cunha, Beauvai noonkwawo dhilwe. Oga faathana muukulu nomomutungilo gwago.

Omainyengo gevi oga li ga holokithwa po kombepo ndjoka ya kala inaayi lunduluka nando. Nuunene omulilo ngoka hagu fuluka moondundu ogwa eta omakakamo gevi. Evi lya tameke ihe okutopoka nopomahala mpoka lya zi kumwe omeya ga mono ompito okuya po. Ombepo tayi pepe momavi ngaka gaali otayi yelitha nawa pamadhilahilo gaakonakoni yoshinima shika.

## Ebandulo kaakonakoni

Otandi mu pandula aakonakoni mboka ya hala okukwatha moshigwana kombinga yaagundjuka okuza keyalekathano sigo okondjokana, Opo omuntu a ninge oshinima e shi uvite ko nawa. Omadhiladhilo ngaka oge shi okulandulwa oshoka, otaga eta uyeyelele kumboka haa uvuko omalombwelo.

Omweetimadhiladhilo gwotango ota ti: "Ngenge wa hala okaadona okalongi ile okapangi tetetete lidingonoka osheshi ovanhu vatya ngaho ovaadjuu." Omadhiladhilo ngaka go gene omadhigu ngele we ga totele owala ngoye ino ga tala nawa shili. "Lidingonoka manga." Oshitya shika osha kwatela mo owino ayihe. Otashi gandja kaagundjukamati kutya, ya dhiladhila nawa uuna taa kongo aakadhona yawo. Tala omumati ota mono omupangi, omulongi a yela nawa. Okuza mpoka a tokola nokuli okuyaleka omukadhona ngoka. Ye ine mu tseyo onkalelo ye nuukwatya we auhe.

Mpaka ota londothwa nawa, oshoka uudhigwotau ke ya megumbo lyawo mbala. Opo a yekele nawa andola otashi ka kala sha tya ngiini uuna ya thiki mondjokana, omulongi, omupangi gwe oku na okutsikila iilonga ye nombili. Omupangi ota tameke ongula onene ota galuka komatangolela, omulongi wo ota tameke ngele lya yeluka nota galuka ko komatango wo. Natu tale andola opethimbo lyothinge. Meme gwoye a yi kiilonga ngoye oto yi u ka longe mepya. Sho lya yeluka nawa oto yi u ka piithe mo oongombe, opo u kale to kuthapo ngoye to litha.

Omutenya sho gwa tsu to yi me-

gumbo u ka tule po omwiha gwoye, ngoye u dhungile meme gwoye ontaku e ye a thikile mo sho ta zi kiilonga. To piitha mo iimuna u ka lithe nenge u fale kaasita mokugaluka to etelele omeya nuukuni. Pamwe uusila kau mo megumbo to yi u ka lande kuustola nenge u tale sho to ningi, opo meme a adhe ku na sha kelugo. Kala u shishi meme ote ya lya toka noonkondo.

Ano owa li u na okudhiladhila opo u konge omunashilonga. Ino kwatwa ashike kokahalu keholoko lyomuntu nenge wa mono iitaafula ya yalwa ina pa pumbwa sha sho wa li wa ka tegelelwa (Mestela), u kwa twe kokahalu kela. Ou na wo okutala ombapila ye yuulongi osho wo ndjoka yaPretoria yuupangi, opo waa kanithe iilonga yamwene.

Uusama owo mboka sho ino pula ehala lyaKalunga nolyaakuluntu yoye owa ningi ashike pauntu woye mwene. Paufupi "Lidingonoka" ta fatulula ngaaka ta kondjele uwanawa wokomeho ano oondhimbo dhi kale kokule, ohole yi pangele megumbo lyeni.

Omweetimadhiladhilo omutiyaali ota koleke ngaka kutya; "Omukadhona a longwa na kongwe komumati inaa longwe." Eeno osha yela opo ehumokomeho li taandele noli endebele. Tala meme omupangi nameme omulongi omumati a tya ngaaka mu konakona nawa manga inaamu ya naye metokolo lya huginina. Ano kundathaneni nawa oshinima kehe, opo pwaa ka kale uudhigu noompangu miinyanga dha kehe esiku.

Omusamane gwoye ote ke kupa uusama ngele ito gwanitha iilonga

## IIPONGA YOMBEPO

Pethimbo ndika okwa kundanwa kutya, ombepo otayi pepe noonkondo muSWA. Pomahala gamwe ngaashi Ovenduka, Ombaye nOliindili oya holola omaupyakadhi ogendji. Oongulu dha kuthwa oondunda dhadho. Oyendji oyi ipyakidhila nokwoopaleka omagumbo gawo ga vudhwagulwa po nayi kombepo.

Shika osho elondodho kungoye nakutunga. Kotokela etungo lyoye li kale li li nawa opo waa ki ipe uusama uuna ombepo ye ku talelapo. Oko hayi zi hoka ndele e tayi thigi oyendji puuyeleele.

## ESO LYOMOONDJILA

Aantu 158 oya si nuumvo miiponga yiihauto moondjila dhomuS.W.A. osho omunashipundi gwoondjila a tseyitha omasiku ga piti.

Ovenduka oyo yotango mwa sa aantu 55, aatiligane 18 naaludhe 37. Oshwarongo tashi landula mo wo omwa sa aantu 33, aatiligane 17 naaludhe 16.

Mowambo omwa sa aantu 27. Mokaiti omwa sa aantu 19 aatiligane 7 naaludhe 12. MuKombabisa aantu 17 omutiligane 1 naaludhe 16. Mombaye omwa sa 11 omuludhe 1 naatiligane 10.

Eyalulo olya ningwa okuza petameko lyomumvo sigo eti-21.10.69, aatiligane 53 naaludhe 105 oya sile miiponga yomoondjila dhomuS.W.A.

megumbo. Iilonga wo malwa manene shila oto yi etha po, ihe itashi vulika ndishi. Oshoka katu vulu okuhupa pwaa na oshikwiila. Tala ihe kuume, omusamane ota kaya kUushimba mbala e te ku thigile egumbo niimuna. Ou na oku ya kiilonga yo iimuna oyi na okupewa omeya nomwiidhi gwa gwana. Ano omumati nguka ina dhiladhila nkene egumbo lye tali ka kala.

Omumelago omumati nomukadhona mboka taa uvuko oshitya shika nota konakona okukala kwawo kutya, otaa ke ku pititha ngiini. Egumbo lyawo opo li kale nombili naanona ya putudhwe pamukalo omwaanawa tagu ya kwatha nomepipi lyawo sho ya koka. Ombili netilokalunga otayi kwatha momagumbo gaayehe mboka ya wilikwa koshitya shika. Aanona wo taa tala ohe nayina ongomuntu gumwe miinima ayihe. Taambeni epukululo kehe lyopandunge, opo mu kale mu na owino ya shili miinima ayihe. Puleni wo ehala lyaKalunga miinima ya lya ngeyi.

S. F. Haufiku

# ONDA YILE UUYENDA 31.5-10.7.69

Meti-31 Mai Kalunga okwa egululile ndje ondjila ndi ye kuKampala Uganda mUuzilo waAfrika. Ondjenda ndjika oya li paali: Okuya kuKampala nokutalelapo wo mul-srael. Omumvo kehe ohaku kala oshigongi shaalundululi yOmbimbeli muAfrika olwotango sho nda li nda ithanwa moshigongi sha tya ngaaka.



**Omusita-gongalo Asser Lihongo ngoka a kala muLondon**

Esiku olyo tuu ndyoka nda londele mondhila. Otwa pitile muItalia nomo twa lundulukile mondhila yi-lwe. Otwa tsikile notwa thiki poka-pale kaEntembe muUganda. Moka otwa zimo noshihauto sigo oposkola ndjika yaMakerere Univer-siteit.

Shaangoka okwa li a pewa ongu-lu ye yokukala mo. Ayehe ya holo-ka po oya li lunga pethele limwe, ihe omalaka gawo oga li lwopomilongo ndatu. Omalaka ngaka ogaaluu-dhe ayeke. Eipulo lya li po olyo otatu uvathana ngiini? Opo aantu ya uvathane nawa, okwa li kwa longithwa Oshiingilisa ashike.

Oshigongi shika osha li sha kala mo omasiku ngaka 1-20 Juni. Oshikalimo osho omapukululo gi ili no-gi ili melundululo lyOmbimbeli. Ongula kehe otwa li tu na ootundi nokomatango otwa ningi omathiga-thano gokulundulula omanyolo o-mayapuki. Aalongi yetu oyo Dr. Ni-da, Dr. Stevensson aayAmerika naa-sita Multon naPrice Aaingilisa.

Pomafudho ohatu ka talelapo o-mahala gamwe gomoshilongo nga-shi: Ombila dhaakwaniilwa, Victo-ria Lake, ofambilika yokuninga o-mahalapi gokupungula iinima yona-le, ano oku yi tula (moMuseum). Uu-wanawa womoshilongo moka kandi wa pa oku u popya oto ningi u mo-ne ndje omufundja. Omugundjuka ilonga nuudhiginini ino landula mbyoka tayi shundula oshilongo.

Eti-22 Juni onda londo ondhila opo ndika talelepo oshilongo oshi-yapuki. Onda li nda pitile muAtena moshilongo shAagereka. Otwa li twa u hala mo mokutegelela ondhila tayi u ka kuTel-Avivi.

Twa thiki muTel-Avivi, ihe uuyuni owa li wi ili. Onda kala muJe-rusalem oshiwike shimwe nonda ta-lelepo omahala ngashi ondundu yoo-

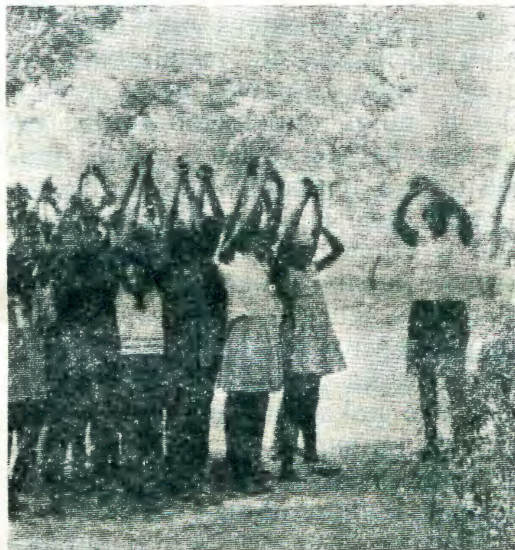
mono, Epya lyaGetsemane, oshiku-nino shombila yaJesus. Onda li wo nda kala muHaifa, Tiberiasa, no-muTel-Avivi. Onda konakona oma-hala gamwe wo Nanasareta, Kaper-naum, Jeriko, Efuta lyasa, ondundu nkoka kwa uvithilwa kuJesus, edhi-ya lyaGalilea nomulonga gwaJor-dan.

Mokutala ayihe mbika oya ningi euvitho enene shili mokutala oho-lehenda yaKalunga mokuhupitha uuyuni moondjo dhawo. Jesus o-kwa valelwa muBetlehem ondoolo-pa ndjika onde yi mono nomeho gan-dje mwene.

Otandi mu halele eyambeko lya-Kalunga koomwenyo dheni tali zi momapukululo goohapu dhaKalun-ga. Owa gama kombinga yinipo, okuJesus nenge okuuyuni?

**Asser Lihongo**

## OUKADONAONGALO



**Mefano eli ohatu mono okangudu koukadonaongalo muKongo pamwe nomuwiliki wavo J. Mumbala. Otava lekelafana nee. Ohava hafele unene omahokololo avo nomaimbulilo.**

### OSHIPU OSHINI PO?

Oku na tuu ngoka te ende moondjo-ho oompadhi dhowala, ihe oti ipu-la ashike kutya, omolwashike ta-dhi mu tsu, peha lyokwiipula ku-tya, omolwashike dha mene?

Ngele ou na omuti omukulu me-pya lyoye, otashi kwatha tuu oku-gu tamanekela okwiima kwagwo manga inoo gu ka po gwaa ime we? Otashi kwatha tuu okwiipula aluhe niyimati yoluhondelo, peha lyokwiikelela kulwo? Oto vulu tuu okumweneka omumwoye mokulila manga inoo kutha po shono tashi mu lilitha?

## NAFYE OKO TWA LI

Ofikola yokElao, Odimbwa, oya ta-lelepo eenhele dimwe ngashi Oshi-nyanyangido, ombelewa yeefikola pOndangwa nomahala amwe a fima-na pOshakati.

Ongula eti-12 laSeptemba otwa fikama tu ye ko. Twa ninga owa-ndaha notwa ya mela londjila. Twa yukilila kOndonga. MOshakati etu-wa letu la fikama li mone eendja da wana. Twa fika pOniipa notwa talifwa oilonga mOshinyanyangido, oyo tai kumifa. Ovanhu tava longo nouidiinini notwe shi monamo nawa kutya, otatu pumbwa tu diinine omambo oo hatu a pewa omudo ke-she ile hatu a landa. Osha li oshiku-mwifa okumona omauwa nomauno-ngo aeshe eli mo taa kumifa moilon-ga yokunyanyangida, omambo noi-fo opo i holoke po.

POndangwa nopOshakati twa ta-lifwa yo oilonga neenhele dihapu. Etango eshi la endelela, nafye twa fadukapo netuwa letu opo tu fike fimbo kuyela.

Omwene na hambelelwe eshi e tu amena mondjila ei.

**Amalia Nangolo**

## EUMBO LETU

Omuniyasha omukwetu fimaneka eumbo leni. Eumbo letu olo onhele twe i pewa kuKalunga okukala pa-mwe novakulunhu noku va yakula paemhumbwe davo.

Omuniyasha efa okuya neekamba, ile okuya koRwacana. Kala me-umbo leni u li fimaneka, opo nelao lOmwene tali kala naave.

**S.T.Nyanya**

### OMUKWETU

Oshifo shOngerki onkwaevangeli paLuther yomOwambokavango  
Die Tydskrif van die Evangeliese Lutherse  
Owambokavangokerk  
Oha zi mOniipa.  
Omukuluntu gwoshifo/Hoofredakteur Om-  
mbisofi Dr. Leonard Auala,  
Amushanga/redakteur S.Ekandjo  
Ondando komumvo mOwambo 70c kUushimba  
nOkavango 90c  
Kombanda yomafuta R1.30.  
Oondando nomambestelo naga tumwe  
kOmwetu,  
Oniipa, P/B. 2015 Ondangwa, S.W.A.  
Oshinyolwa shuule  
wondeimi 1 otashi futiwa R1.00  
oondeimi 2 -"- -"- R1.90  
oondeimi 3 -"- -"- R2.70  
oondeimi 4 -"- -"- R3.40  
oondeimi 5 -"- -"- R5.00  
Oto vulu okutuma efano lyaashoka wa hala  
shi tseyithwe nomatumbulo wo gasha ngele  
ope na.

The Finnish Mission Press Oniipa  
P/B 2015 Ondangwa S. W. A.