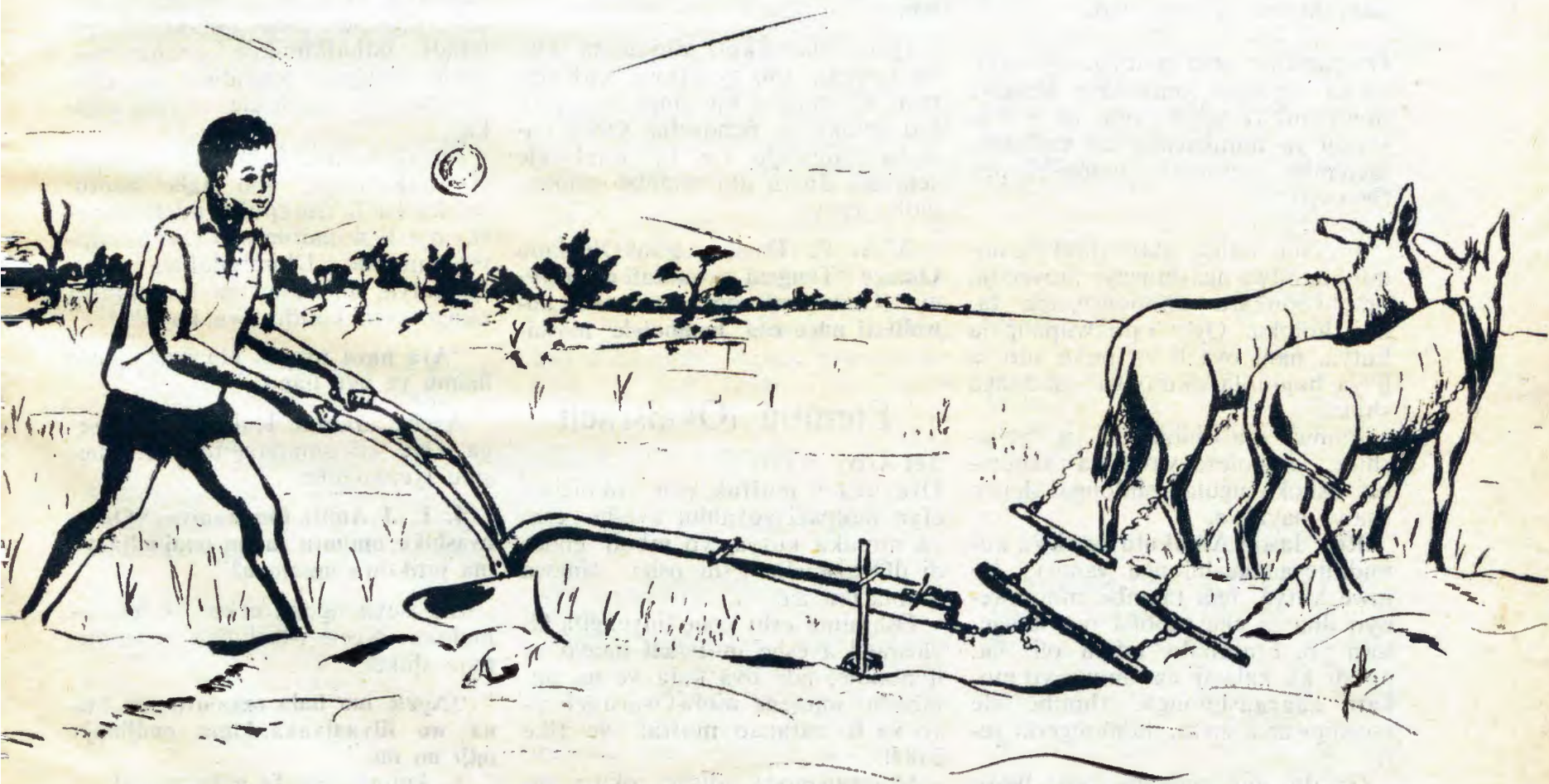


OMUKWETU





Ompumbwe yetu miilonga omboloto

Aantu oyi igilile okutumbula aayakulipangi noye ya shile momizalo dhawo omitiligane. Aapangi mboka taa piti wo ngashingeyi mOnandjokwe nayo wo otaa ithanwa ngashingeyi aayakulipangi. Eyooloko ndika otali etwa koonkatu dheyilongo. Nepulo lyoye otali kala ngiika mpo, nena iilonga yaayakulipangi mbaka oyini?

Meme Eva-Liisa Toivakka, okwa ndjokonona ngeyi:

Sigo oompaka aayakulipangi mOwambo otaa longo iilonga yaapangi: Itashi ka kala aluhe ngeyi: Meme Toivakka okwa tsikile ko natango ta ti, iilonga ayihe tayi kwatha omuntu, oyo iilonga yomupangi, ihe kehe gumwe ota longo pamuthika gwe. Oondohotola otaa longo peha lyawo aapangi naayakulipangi osho wo.

Ompumbwe yetu miilonga oyo ndjika tu imonene omboloto. Mumwe nompumbwe ndjika oku na wo oyendji ya humbatwa, taa endithwa metemba lyeithano lyopashilonga (beroep).

Eithano ndika otali tsimikwa notali kudhilwa ngashingeyi moyendji, omolwoonkatu dhopombanda tadhiloloka. Oye li pokwiipangula kutya, nani oya li ya puka sho ya li ya hogolola okulonga oshilonga shoka.

Pamwe taa dhiladhila ya lye ashike omboloto yawo ya hugunina, oshoka ngula oshilonga shawo sha yi nayalwe.

Rev. Jason Amakutuwa okwa kumidhile aanaashilonga yamwe, lumwe kutya, naa taambe moomwenyo dhawo eha mpoka taa langekwa po. Etumbulo ndika oli na, notali ka kala li na omwenyo mokati kaanaashilonga ethimbo ele moshigwana shetu, nomongerki yetu.

Gandja ano nenyanyu eha lyoye kungoka te li inekelelwa ishewe. Taamba wo nehambelelo mpoka to uthilwa u ka longe. Ayehe otaa ka kala pomahala gawo, taa longo iilonga yawo. Ishewe esimano li kale lyOmuwa moshigwana nomongerki, halyomuntu.

Omapulo nomayamukulo

1. Josef Kandadi gwokOmbaye okwa hala a tale manga omukadhona kutya, omukiintu tuu manga inaa hokanwa nokwa hala oonakuvala e shi ya ningithe kekuni.

Tala mentu gwa meme owu udha onyango ondulu yuulunde nou li moonkandja dhuulunde. Itedhulula taa! Iil.8:21-23. Ino dhiladhila Kalunga ha kotokele aantu, sho to ti: "Nande oTate Kalunga ngoo e mu ulikila nge, oshilema ngo a ulukilange." Inekela Kalunga. Oye omushiti gwoye.

2. J. N. Daniel gwokOshomeya, ota yematele aakulukadhi yaasitagongalo naamati aana yaasitagongalo taa gandja oshiholelwa oshiwinyai itaaya kutha po aakadhona ye ya mitike. Otaa kondjitha wo oonguwo dholupolo hadhi zalwa kaantu inaaya yogoka. Ota nyenyetele aakiintu haa ligolele omatulokumwe gaadhimbwe e ta yematele aamati inaa hala aamitikwa yawo. Ota kumagidha aakulukadhi yaasitagongalo ya kale ye shi kutya, nayo aasita tuu.

Iyalo tshamakuti, dhiginina elaka ndyoka, oto popithwa kuKalunga. Kalunga e ku ningi omuprofeti gwoku tu pendutha. Otwa hala tu itedhulule tse tu lombwele eemvalo dhetu dhi taambe ekumagidho lyoye.

3. A. P. Frans gwokOlookola Olange "Tungeni eewalitali dovanyoni." Omunyoni oha i-kOuvalelo kowalitali ndee ota hombolele moshi-

Etembu lOvaisraeli

Tel Aviv:

Ovayuda 9 mulrak ova tokolelwa efyo moipafi yovanhu aveshe eshi va monika kutya, vo mboli endadi dOvaisraeli. Eshi osha ningwa momafiku aa.

Oshinima eshi oshe tinyengifa Ovaisraeli aveshe muIsrael naavo ve li pondje, nde ova kala ve na ombada munene molwOvaisraeli ovo va li natango mulrak ve fike 2,000.

Meeshinagoga adishe okwa ningwa omailikano manene novanhu ove li dilika oikulya opo tuu ovo va xupa ko va kale inava mona oshiponga sha sha, nokwa diladilwa Ovayuda aveshe ovo va tembulwe mo diva, pafaneko loministeli Menachem Beigin.

nyanga. Ehombolo olo ngoo linene li dule Ouvalelo?

Mentu gwameme, ohango yopowalitali, opo to pewa omufuko. Oto yono ngele to mu ipe miizimba. Ongerki oya yalula eihokanitho lyeni miizimba, onkee shoka osho mwa hogolola na shitye ngaa-ka. Oondjokana kadhi vule Uulalelo Uuyapuki. Omuntu ota vulu a kale "pata" nenge "mburuta" nenge "sesita" ndele ota yi megulu. Ano, ina hokana, ndele omuyapuki. Nde omuntu ita vulu a patwe Uulalelo Uuyapuki ndee omwenyo te gu matha we. Ongerki oyi li mondjila sho itaayi keelele aantu kUulalelo.

"Okaana komukriste nomupaani otaka dulu tuu okushashwa?"

Eeno, oyendji ya shashwa nokuli.

"Omatumhakano a tya ngaha nenge otaa twikile otaa imbi ovanhu va dje moupaani!"

Ngweye nge omuna gwaFrans uupagani ku u shi. Uupagani uululu. Sho nda ningi omukriste opo handi iidhidhimikile aadhimbwe, ngele aapagani yaandjetu omalwa omanene ye tondelele onyata ndjika.

Ou dhiladhila oshinima koshipala shaKalunga, ino tala aantu. Ndika ka li shi epuko ndele ongerki oyi li mondjila sho tayi kondjitha uulunde. Dhimbulukwa mpoka kutya, uulunde tau kondjithwa hangoye to kondjithwa, kaya!

"Ava hava nyono oipango imwe ihamu va udu hano?"

Ayehe aalunde Kalunga e ya tseye. Oye wo omupanguli gwetu mesiku Iyepangulo.

4. T. J Amity, Ongwediva: "Omolwashike omuntu ta nu ondjindja ye ina pitikilwa omalovu?"

Ine tseye ngoka e ku keelele omalovu. Ngele oKalunga nena oto pula shike?

"Ngele ino hala omalovu ino kuna we iilyaalyaka, kuna ondjindja ndji ho nu:"

A, kuume, wa fa u paaanga!

Inamu tsuwa we ongaya maandjeni, ontaku yoye yi gunda nondjindja!

Ando owa li tuu ku nwa malovu, ando nde ku panda; Ondjindja nomalovu iinima yomepunda. Ito Tala etsikilo kep. eti-8.

KALUNGA OTANDI MU ADHA NGIINI?

Kalunga oku li peni? Okwa kala peni. Otandi mu adha ngiini ngele onda hala ndi mu talelepo? Omapululo ngano agehe kombinga yandje omadhigu oku ga yamukula; oge vule oondunge dhandje.

Eewa, otandi vulu ngaa okutya, Kalunga Oye omunankondo adhihe notu udhitha uumbwalangandja auhe. Onda hala okukala puye aluhe, ihe otashi vulika ngiini ngele onda tya ngeyi? Ondi ye mOseminali, opo ndi adhe Kalunga ando? Aawe, naahoka oku na iipundukithi yi ili noyi ili kombinga yehalo lya-Kalunga. Nenge ondi ye mOskola yUupangi, moka ndi na otundi-mbimbeli ongula kehe. Aawe, naamoka wo otandi ka kala oomayila noomayila kokule naKalunga. Nandi ninge ano omusitagongalo ngoka hu uvitha oohapu dhaKalunga aluhe? Naampoka wo Kalunga ota ka ya ndje ontuku omoluunkundi wandje. Eewa, nandi ninge omwii-kaleli-omuntu ngoka e li aluhe mongulu yaayikaleli nota dhiladhila ashike iinima yopakalunga. Kapu na shi vule oshikwawo, onkene tuu otandi ka yona iipango yaKalunga.

Otandi ningi ngiini? Onda mana po omadhiladhilo nee-natu kutheni omambo. "Ongame ondjila noshili nomwenyo. Kaku na ngoka teya ku-Tate okuninga ta pitile mungame," Jesus a ti. *Susanna, Heita*

Susanna oye omukadhona a pita naweelela ekonakono lystanda VI (ontihamano), ihe ina mona ompito yokwiilonga komeho.

Ombimbeli mOshindonga ya holoka mOstola yOmambo mOniipa.

Omupapa ota yululula ko komiya

Moshilando shOmupapa-Vatikan, Roma, Omaziminino omape taga oopalele ethimbo ndika oga kundathanwa no-gakolekwa mongerki onkwakatoli.

Omukalo omupe gwongashingeyi otagu zimine aayikaleli naapristeli ya ethe po oshilonga shawo, shimpa tuu omuntu ta dhimbulula kutya, itashi mu oopalele we.

Otaa vulu wo okweetha po iilonga mbyoka noku ka longa yimwe po pondje yOngerki, ngashi aantu yalwe.

Okwa tokolwa wo pampango kutya, ngoka ta ningi omwii-kaleli e nokukonakonwa nawa omwenyo

Oho t i l a t u u o m i l e m a ?

Manga nda li po okanona okashona ine pitika ndi ka langekwe mondjugo yi nomilema. Ine pitika oku tumwa puushiinda ku nomilema. Ine pitika oku ka tala oshinima mondunda yi nomilema. Nenge okuhungila momilema. Nango ye wo ngiika owa fa ndje moshinima shika.

Tala, omilema nde dhi popi ohadhi kudhile owala olutu, dho kadhi na sha unene nomwenyo. O-

INATU SENI UUNYE

Otandi hambelele Tate Kalunga shonda kala momumvo 1968 aguhe handi talelwa po koshifo shOmukwetu. Oshifo shika osha kala hashi tu pukulula noku tu londodha pamikalo dhi ili nodhi ili twaa ye miiponga nomomapuko gopendji.

Aaleshi amuhe ooyakwetu, otandi mu kumagidha kutya, nomomumvo nguka natu hwameni okulesha Omukwetu. Inatu seni uunye nando. Unene otseni aagundjuka yomahalakano otatu pumbwa okukala hatu lesa oshifo shOmukwetu ethimbo alihe, oshoka Omukwetu oye otelefona hayi adha omuntu kehe shaa ethimbo a hala notayi mu tseyithile shoka sha ningwa kOwambo nenge palwe muSuidwes noshwo wo kiilongo yokokule. Ino sa uunye mbesitela Omukwetu gwoye mbala.

Tu galikaneni Kalunga a pe aawiyauki yOmukwetu oonkondo esiku kehe, opo ya tsakanithe iilonga yawo yoku tu putudha noku tu uvi-thila. Inali toka natango nokumu halela omumvo omupe gwa yambe-kwa. *Vaino Risto Lasarus*

mwenyo gwomomwenyo. Ekondjitho lyomilema dhomwenyo oho li longitha ngiini? Ou dhi shi? Oho dhi tila? Oho dhi kondjitha?

Kehe gumwe okunehalo oku kondjitha omilema ndhika momwenyo gwe, ihe ondjila katu yi shi. Uusama mbuka Jesus te u yeke nomulumentu a homata omahwahwa a langele eliko lyegumbo lye, ihe kee noonkondo dha sha. Luk.11:21.

Oku li melangelo, nokwa zala nga, ihe oonkondo kadhi po. Pethimbo ndika oku na iilongo oyindji ya homata opo yi gamene aniwa iilongo yawo, ihe oonkondo kadhi po.

Uuna to kondjitha oshiponga shoye shontumba, nena ou na wo okukoneka oonkondo dhasho kutya, odhi thike peni tango, opo u vule ihe oku shi iizalekela nawa iikondjitho yasho.

Opo kaashi kale ngashi Jesus ta ti omulumentu okwa zala aniwa a gamene egumbo lye, ihe oonkondo kadhi po. Oku na gulwe e mu vule Luk.11:22.

Omilema dhi li mungoye odhi ku vule oonkondo, oompwidhuli dhi li mungoye odhi ku vule oonkondo. Oondjo dhetu odhi tu vule oonkondo, satana oku tu vule oonkondo. Oonkambadhala dhetu yene okukondjitha uulunde odho otadhi tu yolitha kusatana.

Omukriste ti inekele Ombimbeli ayike megumbo lyawo, ye ita holoka moongundu dhaakriste ooyakwawo, oye okwa fa ewaya lya zala omatati goshilumentu. Ihe satana ta kakama komuntu a minikilwa kuuyelee waaluhe Jesus. Tu kondjithe ano omilema dhomwenyo twa zala Jesus, notatu sindana. *Sebulon Ekandjo*

Omuyevangeliste ta pumbiwa kETOTO

Mepya lyetumo kETOTO taku pumbiwa omuyevangeliste a longe mokati kaapagani. Oku na aakriste aashona mboka ya longwa komukriste Jeremia Shilumbu. Omuyevangeliste uuvite eithano moshilonga shetumo na tume eindilo lye komutonateli gUuninginino Jason Amakutuwa.

Ompumbwe ndjika oyi na eendelelo, shoka aapagani otaa pumbwa ehupitho nepya lya tiliganena eteyo. Tuma eindilo lyoye mbala!

Matti Seppälä

Nane wo aayaludhi

Omwa kala ethimbo tamu putudhwa, opo mu ka kaie aapangi yiigombo noyomavu. Ngashika naanaa aalongwa yaJesus oya li po wo aayaludhi, oshoka oya pelwe oonkondo dhokwaaludha oshigombo kehe, osho amusha-nga gwongerki Rev. Matias N̄gipandulua a holola meyapulo lyaapangi mOniipa.

Aapangi 23 mboka ya yapulwa e-ti - 7. 2. 1969 oyo ya li ongundu onene yi vule oongundu adhihe dha tetekela. Rev. Festus Ashipala omusita gwomOnandjokwe naRev. Petrus Shipena, omudhiginini gwii-niwe yongerki, oyo ya kwatha tate N̄gipandulua moshiyambelo.

Manga aayapulwa ya kunduka oshiyambelo nokuthikama omusita N̄gipandulua okwa ti:

Ongomunashilonga omukweni o-tandi mu kumagidha kutya, one otamu ka aadhika komaudhigu o-gendji, ihe Jesus ota ti, ongame o-nde mu pe oonkondo okusinda shaashoka.

Mokweeta otekisti yomOmbimbe-li ndjoka tayi holola Jesus sho a tumine aalongwa omilongo heyali momikunda noya galuka nenyanyu, omolwasho noompwidhuli odha vulika kuyo medhina lyaJesus.

Oshinima shika Jesus okwe shi ganda oshoka okwa tseya oshipo-nga shi li musho. Shoshene osha li oshinene, oshoka ka kwa li omuntu a tidha oompwidhuli momuntu. Ihe mpoka oonkondo dhaJesus ta-

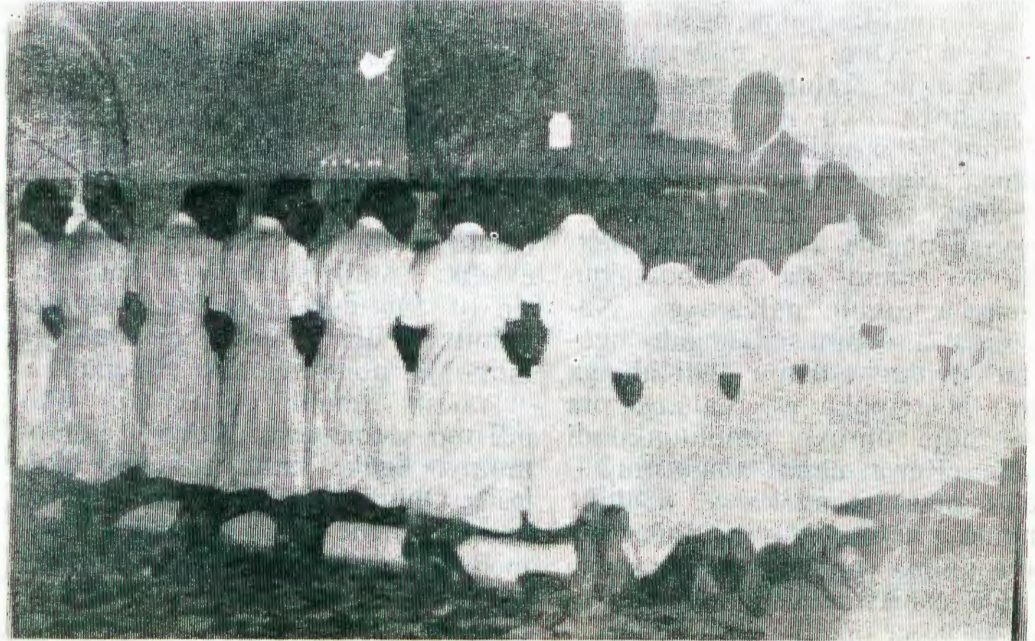
Mefano lyopevi aayapulwa otaa thi-kama mongundu yimwe niipala ya-nyanyukwa.

Okuza kolulyo sigo olumoho, Ebba Shedile, Emilie Naikaku,

Alba Mweendele, Elina Kayone, Saara Akweenda, Helena Nhinda, Natalia Iipingge, Johanna Hausholo, Mirjam Handjamba, Viktoria Eka-ndjo, Marta Haushona, Selma Iipi-ge, Monika Hamutenya, Selma Mumbala, Elise Shilongo, Justina Amupolo, Mirjam Shimake-leni, Amalia Iipingge, Maija Shivute Julia Shiimi, Ester Shikomba, Tuuliki Tuhadeleni naEmilia Mule-keni.

Inaku tseyika manga yangapi taa ka tsikila oskola nayangapi taa ka la miilonga.

dhi longo nasatana ota kondjo. E-kondjo ndika olya gwana okutilitha omulongwa gwaJesus kehe. Ihe Je-



Mefano aapangi 23 otaa monika ya tsa oongolo kowalitali moshituthi sheyapulo lyawo, nokulalekwa nuuyaniba.

sus ina gandja oonkondo dhoka-thimbo. Nane wo nge tamu dhi-mbulukwa shino otamu ka sindana, osho a hulitha ngeyi noku ya ku-mika omukumo.

Ehungomwenyo

Aanashilonga oya pumbwathana o-po ya vule okumona omukumo mpoka tagu tameke okukana. Oo-

hapu dhaKalunga odho oluza Iwo-mukumo gwetu.

Meme Kaino Kovanen omukulu-ntu gwegumbo lyaNandjokwe, o-kwa kumagidha aapangi ya kale mekwatathano naasita mpoka taa longo po.

Oomwenyo dha aludhwa otadhi vulu okugandja eyaludho kuyalwe: Meme okwe shi holola molupe

nduka sho a ti:

Eha we li pelwe u kale moskola ndjika, iitongwa niilonga wa li u yi na mpaka, ashihe shika omagano we ga pelwe kuKalunga. Ano, nane wo indeni mu ka gandje omagano.



Mongundu ndjika omu na wo yamwe ye li mongundu yaakongindjila

EYAPULO LYAAPANGI ETIMILONGO MBALI NETITATU

Medhina lyomukwaniilwa Uushona Shiimi, ngoka inaa vula okukala meyapulo lyomwana Julia Shiimi, omumbisofi dr. L. Auala okwa pandula aalongi yoskola yaapangi mOnandjokwe.

Omumbisofi okwa ti: "Onda kumwa unene komakumagidho gomukwaniilwa Uushona sho ta kumagidha omwana Julia a dhiginine Kalunga miilonga ye opo a mone omayambeko. Ondi shi shi otashi pumbiwa komupangi kehe ta ka ya miilonga. Omukwaniilwa Uushona tadhil mbulutha wo Julia a dhimbulukwe aalongi ye mu longwa mooskola dhuunona. Kalunga na hambelwe aana yaakwaniilwa mOwambo sho itaa kongo esimano lyawo yene, ihe omokuyakula oshigwana ashighe."



Okuza kolumoho, Miss. Kaino Kovanen, omukuluntu gwegumbo lyaNandjokwe, aayenda Sister J. Stephenson na Matrone W. Hugo nomundohotola H. Kyrönseppä taa talele po egumbo.

Oshilonga shohenda

Moshituthi shahugunina sheyapulo lyaapangi mOnandjokwe omwa li wo oosister yaali ya zile kOshakat. Oya konakona iilonga oyindji tayi longwa moshipangelo, nosho tuu omatungo moka hamu kala aapangi naalongwapangi.



Omumbisofi L. Auala ota minike aayapulwa sho ya piti mongerki.



Kuku Vistolina Shiimi oye wo okwa kala meyapu lyomwana Julia Shiimi ngashi taa monika mpaka mefano.

Matrone W. Hugo ngoka a pewa ompito yokuholola omadhiladhilo ge okwa ti ngeyi:

Tse otwa kumwa unene, oshoka nani mpaka otapu longwa iilonga iinene. Notu shi shi iilonga mbika otayi longithwa kuKalunga. Oshoka kape na gumwe ta vula iilonga yi thike mpaka kee na Kalunga. Otandi mu halele elago lyaKalunga miilonga yeni.

Pamadhiladhilo gandje oshilonga shika shuupangi oshi vulile ndje iilonga ayihe hayi longwa, oshoka oshilonga shino otashi kwatha omuntu omukwawo. Na ishewe Jesus mwene okwe shi longo. Tse aakriste otatu kambadhala okweenda ngashi Jesus.

Iratu gwanitha oshilonga shika ngele itatu itula mo nawa. Otashi pula uuwanawa wetu tango, opo ihe nasho tu vule oku shi longwa. Tu gandjeni ano ekwatho komukalo nguka omwaanawa nokooya kwetu.



Nakufya Aron Shilongo

OMUSHAMANE ARON SHILONGO KOSHILONGO

Nakufya Aaron Shilongo oye omushamane a li umwe wependa lovaitaveli meongalo lomOngenga. Okwa kala omunghundi wokolutu eedula dihapu. Luvali nokuli okwa fiwapo kovakulukadi vaye, ndele nande ongaha okwa kala ependa nomulaadi meendjovo daKalunga. Okwa kala ha wilike ongundumbibeli mOikoto. Nande oye okwa kala omunghundi, ponhele yokutalelwa po okwa kala ha talele po ovashiinda shaye. Mouyehame waye ponhele yokutuwa omukumo oye a twa omukumo ovatali vaye nokuva kumaida.

Oye okwa li omwiilikani washili, okwa kala nokwiilikana omutenya noufiku, ehe na edimbuko. Nomeumbo okwe tu kumaida alushe neendjovo daJob omulumenhu waKalunga nomomaudjuu.

Nakufya A. Shilongo okwa kala nokuhakulwa mEngela, nokwa kala ngaho xwepo. Lwaxuuninwa otwa ya kOkatana, opo kOnandjokwe. Noko e tu fiya po eti-26.8.68. Omaimbilo anakufya a li e a hole fiyo omokuya kwaye koshilongo oo: "Jesus nge te endifa nge, na Nokuhafa handi ende, na Keumbo, keumbo, ku, Kalunga ila....."

Ohandi pandula unene ava ve tu yakula moipangelo aishe nge mEngela ile moKatana fiyo kOnandjokwe. Ovahakuli aveshe ngaashi vamwe handi mu dimbulukwa komadina Helena Nhinda, Anna-Antonio nomuyakupangani Karolina Dumeni. Inandi hala okudimbwa omundohotola munene waNandjokwe. Ohandi pandula yo ovafindikili vanakufya komaendo aNgenga. Vamwe va dile nokuli kokule. Oshihomo shovanafikola vopOngenga, nosho valongi vokEndola mependulo lokeengula lehekeleko inandi hala oku li dimbwa. Amushe ovo ohandi mu halele omayambeko omwene.

Nakufya omushamane A. Shilongo okwa fiila nge eefiye dihapu Martin Shilongo, Aune Shilongo, Ileni Shilongo, Severus Heelu, Petrina, Paulus, Diina, Petrus nokanghelo keedula 4 Ndinela Shilongo. Omwene ne tu pe outeku muwa ye na hekeleke. Omuye hatu mono omukumo. Tate Kalunga na hambelelwe omolu Aron Shilongo.

Omufiyekadi,

Emma Shilongo

MONDOBE OSHO VALISHA WAIMINE

Ovalihongi konyala efele kwa xupa va ngudumana meongalo mOndobe eti-12-16 Desemba 1968, omolwoshongalele. "Ehangano lovanyasha ovalihongi" (Young Student Society) Eengudu okudja St.VI-X pamwe yo novalongi novahakuli ovanyasha.

Efina loshoongalele eshi sha fikamekwa koyoongalele oyo aishe hai ningwa meefikola odo 4 dakula mOwambo. Omo ovanafikola hava shakene mokuxungila pamwe nokukundafana meendunge nopaukalunga. Eshi osha talwa itashi wanene ashike peenhele deefikola, ndele ovanafikola va ninge yo owoongalele vomoitayi yavo pomaongalo opo vo tava udafana.

Osho ongudu inene yovanafikola koshitayi shaUkwanyama inai dipa oshoongi eshi. Sha ningwa nokuli momaongalo atatu meedula nhacu da pita tashi ende ngaa shi li kombinga fiyo sha waimina.

Kwinya kOndobe ovanafikola veefikola di lili nadi lili ve tu pa eendjimbo tadi shambula omutima, komanyando katu shi kwaa tumbula. Efiku olo laxuuninwa eongalo meshunemo opondje yongerki twa ongala eshi okwa li Oshoondaha, nde-



Jesus okwa ti ongame uuyeleele wuuyuni.

EPANDULOHAMBELELO

Omuwa na hambelelwe ye na pandulwe kutse sho a enditha no-shikaha shesilohenda oshigwana shika shetu sigo e tu thikitha momumvo nguka tu nelago.

Kalunga mwene okwe shi tu tseyithile sho ta ti Oye Kalunga kesilohenda omutalanteni noye Kalunga kolukeno nokombili.

Kesilohenda lyaKalunga okwe tu taagulukitha omafuta omale nomanene guuyuni mbuka, oshoka oku tu hole otse nando inatu mu longela sha she mu opalelela. Okwe tu aadhitha mo tu wape oku mu longela ishewo momumvo omupe.

Onke otandi ti, oshigwana shi na Kalunga kasho Omuwa oshi nelago.

Taapopi Amoomo

le omolwouhapu wovanhu, ava va tala vo va pwilikina neshambu. Omafiku oshongalele 4 okwa li ongetatafiku omolweenghundafana edi da li da kwata monghama.

Omuniyasha paengudu da tumbulwa metetekelo, omulongi nomuhakuli shimha tuu to mono omhito nge-nge oshoongalele shatya ngaha to shi udu inashi ku koyelelapo vali. Eshi oshi na okuningwa pexulilo leefikola alushe muDesemba. Meongalo tamu ongalwa eshiivifo oto keli mona ngaa alushe mangha ku na efimbo.

Keongalo kOndobe ookaume eyakulo ve tu yakula nalo katu shi kuli tumbula, Kalunga ne li nangeke noupuna nosho yo omaongalo makwao meedula da pita.

Oshoongalele sha tya ngaha osho sha diladilwa shi ende ngaha. Mee-fikola dakula mOwambo oto monomo ovo tave ku nyamukula moshinima eshi, shimha u na epulo musho.

Moitayi yo ikwao ovanashisho moshongi sha tya ngaha inamu fya ounye mu shi dipae po.

EENDUNGE OKUXUNGILA KAUME. / *W. W. Muaningange*

IITUTHI MOTJIWARONGO

Yatatu oya li ya shashwa, omulongo nagumwe ya kolekwa na gumwe okwa kuthilwa megongalo lya Tjiwarongo eti-17.11.68.

Otundi onti-3 komatango ongerki ya hiti noya li yu udha aakriste oye-ndji. Aamati yomondoolopa naakriste yomolukanda naayenda yatatu yaatiligane yongerki yoombulu (N. G.Kerk) oya gongalele mo.

Pastor G. Max a ningi elongelokalunga nongundu yaashashwa ya hedha kowalitali noya shashwa. Nokwa landula aakolekwa, nohuguni na omukuthilwa.

Ongundu yaakulukadhi yolwiimbo yi imbi omaimbilo omawanawa go opala nokwa landula ongundu onene yolwiimbo lwaamati noyiinyengitha okahumba kawo komokana.

Aayenda yongerki ya N. G. Kerk, ye etapo omakundo gawo melandulathano. Pastor Max uvitha oteksti yesiku ndyoka Mat.24:36-44 Ehuku lyeuvitho olya li TONATENI OSHOKA OMUWA OTE YA OMBADHILILA ONGOMUFUTHI.

"Kalunga! gamena aagundjuka yetu ya kale aayogoki koomwenyo nokokukala kwawo."

Ev. D. P. Isak

Komufala okwe egulula oshigongi shooveta

Oshilonga shepangelo osho okudhiginina ombili nelandulathano. Nopwaa na shika evundakano otali holoka mbala, osho a ti Ndjayi Komufala Dr. M. J. Olivier meegululo lyoshigongi shetoto lyooveta sha li ko omasiku ngaka kOshakati.

Dr. Olivier okwa popitha iilyo yokutota ooveta nomalaka gamwe ga kola. Okwe ya kumagidha e yuukilila ta ti ngeyi:-

Osho oshinakugwanithwa sheni mu longe. Inamu lalakanena uuwana na weni yene. Omu li petameko lyetungo lyoshigwana. Shono she etwa po nale koshigwana nashi humithwe nawa komeho.

Shono mu shi na ngashingeyi melo osho iilonga yepangelo. Omalelo ngoka taga longo miilongo naga tonatele shili iilongo yaandjawa, ku monike ehumokomeho. Longeni mwiinekelwe koshigwana sheni. Suid - Afrika ote mu kwatha aantu, eliko nosho tu iinima yilwe.

Uunganga

MuUniona aaludhe yatatu oya kwatwa noshihauto shina epakete lyomahuli gomuntu niilyo yimwe (geslakte)

Omusamane W. Meyer, oye a keelele oshihauto shika mwa li aaludhe yatatu sho a dhimbulula kutya oshihauto shoka osha yakwa.

Manga taa lombwelathana melaka lyOshisutu epakete ye li ekelehi, ye Meyer okwe shi kutha mo nale. Okwe ya gandja mbala kaamati yomiya dha manga pomwenyo, oshoka ositasi yawo oya li popepi.

Oshihauto oshanakusa a li e shi hehela kukuume ke e ke ende ko nasho omasiku ngoka. Oye omutiligane Botha a valelwa muUitenhage. Okwa tengenekwa aaluudhe mboka omahuli otaa ka ningitha omiti dhawo.

OIPELEKI OI NA OUPYU

Amushe ava mu na eefitola doipeleki ya dikwa medu omwe shi koneka tuu?

Oipeleki oipyu. Oinima yomeefitola da tya ngaho, kai kwete okukulupa, osheshi otai kangulwa efiku keshe.

Onawa nee nge to ningi ofitola ya tya ngaho, tungila mo meni loipeleki eedopi. Nande omukweyo umwe, opo oupyu u hakele meedopi. Vali diladila, oipeleki oyo wa dika medu oya kosha ondilo, ngeno owa landele eeshako doshamende, nde to ningi eedopi doshamende, ngeno owe shi denga komutwe. Hai ti, oipeleki oipyu vakwetu.

Filippus A. Nakanue

Evi lyAawambo olyAawambo yoyene, nokape na gumwe te ya mo pwaa na ezimino lyeni.

Aatiligane otaa kala mo ngashi tamu ya pumbwa. Keendelelo lyekoko lyeni oko wo keendelelo lyaatiligane itaa kala mevi lyeni.

Oshigwana osha hala okwiilela, ihe omu nokutala nawa mboka taa ka lela. Omayugo, oombumbo, uukatolume, aatondi yoshigwana noyehumokomeho itaye kiidhidhimikilwando.

Itamu longele V. V. O, nenge Tanzania nenge Ndowishilanda, nenge evi lilwe, ihe otamu longele evi lyeni.

Enditheni iinima muuyuuki momeho goshigwana. Okugandja omapyano noku ga landitha, otashi kala momake gepangelo lyolyene. Omalanditho otaga tulwa poonkatu oombwanawa. Eshunduko lyagundjuka nali kundathanwe pamwe nongerki. Nashi ningwe wo meendelelo.

Elongo lyooskola nayilwe otayi ka enda nawa ngele neyene tamu yi tala nawa. Naku monike wo elongo lyaaikuluntu, opo iinima nomepangelo yi ende nawa.

OKAWE KOHANI

NEW YORK. - "Okawe nosho tuu oumanya vamwe vouyamba otashi dulika va hangike vahapu kohani," osho ovanongononiendimhepo, Ovaamerika va tonga.

"Eshi ohatu ke shi kufa mo nawa ngenge ovo tava dingunuka ohani tashi dulika va etelele ko edu noumanya komuyalalalo wohani."

IITA MUNIGERIA

Umuahia. - Biafra, aantu ye thike 300 oya sa, noyendji ye vule 500 oye ehamekwa muNigeria, sho ombinga yepangelo lyaNigeria (Federale regering) ya mbombwa manga aantu ya li ya gongala pomalandithilo giikulya (Markplein) mondolopa yaUmuahia.

Otaku tiwa oyendji yomuyo aakulukadhi ashike nuunona. Methimbo lyiiwike iishona aantu 500 oya sa ngeyi iipundjamenye muBiafra.



Dr. M. J. Olivier

OMULUMENTU IILUKU MARIA

MuSao Paulo Brasilia, omulumentu gwoomvu'a 25 okwa kwatwa kaapolosi sho iiningi omwiikaleli omukiintu, (non) nokwa kala oomvula ndatu mokolosteli (eha lyaa-yikaleli).

Olumpio de Almeida, olyo edhina lye, okwi ihula omizalo dhe dheidhimbiko sho omalimbililo ga tameke momukuluntu gwokolosteli ndjoka.

Aapolosi Olumpio okwe ya lombwele kutya: moka okwa kala mo oomvula ndatu, sho aadhikile ishe-we a kala oomvula mbali mokolosteli onkwawo yaakiintu noye mu tidha mo sho ya dhimbulula kutya, ye omulumentu. Okwa yile mo omolwiilonga ye mu ningile oyindji.

Mpaka okwa dhimbululwa me-wi lye sho tali ndunduma. "Maria" olyo edhina a li iithanwa mokolosteli.

81 YA SI MOSHIKUNGULU

MuLos Angeles, Amerika omvula oya loko noonkondo omasiku omugoyi ga landulathana, nefundja olya popoka kuumbugantu waCalifornia nkoka lya hanagula oondolopa niilando sigo omuLos Angeles.

Aantu oyendji oya sile moondjila manga ya adhika miiyenditho yawo nayalwe omomagumbo sho ga siikilwa po komeya.

Oongodhi dhiilando odha tokagulwa noondjila odha thitikwa po. Aantu oyendji oya kala polweela yaa na omagamumbo. Ashihe sha yonuka nge tashi oopalekululwa okwa tengenekwa otashi ka pula R25.000,000.00. Ndishi inamu yalulilwa oomwenyo dhaantu!

ETSEYITHO LYOTEKISA

Ookuume meitaalo one mboka hamu galikanene okambesa hoka haka enditha aantu pokati kOndangwa nOshakati nohamu ti, Kalunga na yambeke iilonga mbyoka, omawi geni gu uvika. Mboka ishewe mwa lili nale kondjila yokuya kOndangwa okuza kOniipa nOnandjokwe nOndjondjo, ngashingeyi opwa monika Okambesa okatiyali ngashi to ka mono.

Opwa dhiladhilwa pu ningwe oositopa ndatu molwotekisa yopokati kOnandjokwe nOndangwa ondho: Onandjokwe - Oniipa - nOmatopokelo gondjila yaNandjokwe naandjoka tayi uka kOshomeya.

Oofuto ongeyi: Onandjokwe-Ondangwa 20c, nenge Ondjondjo 20c,

Uunona woomvula ntano otawu futu 5c, woomvula 10-12 otawu futu 10c woomvula 13-16 otawu futu 20c

Oshihauto otashi kala hashi ende ethimbo kehe; pakweenda kwaantu opo pakweenda kwasho

Ethimbo: Aluhe otashi thikama pOnandjokwe etata lyohetatu yongula nopohetatu yoyene otashi shuna kOndjondjo mpoka tashi tsakanene noshikwawo tashi zi kOshakati; ano tayi kala nokupingathana aluhe ngeyi:

Onandjokwe - Ondangwa - Oshakati; na Oshakati-Ondangwa-Ondandjokwe. Omahala gokutegelela ogo **Onandjokwe stop No. 10, Oniipa stop No. 9 pomatopokelo goondjila stop No. 8.** Uupeleki wo otawu monika positopa ndjika wa shangwa Ondangwa Oshakati Busstop.

Ookuume amuhe otandi mu pandulile elongelokumwe lyeni.
Silas Ph. Kuejo, Posbus 5, Ondangwa SWA.



Mefano otamu monika ombinga yimwe yomutse gwotekisa ndjoka ya longithwa nale, nokolumoho otekisa ndjoka ya yi miilonga ngashingeyi.

Ashihe tamu shi longo ongele nohapu nenge niilonga shi ningeni nokusimaneka Kalunga

O M A P U L O

vulu okukeelela aantu yaa kune iilya yawo oto pitilile unene. Elobwelo lyaKalunga otali ti: Inamu kolwa komaviinu moka hamu zi uuwinayi kehe, ihe udheni Ombepo Ondjapuki Ef. 4: 18.

5. T. M. Shipandeni Mateus gwo-ku C. D. M. "Omolwashike mwa nyengwa okulela aalumentu momagongalo geni? Dhimbulukweni kutya, oonzigona dhaKalunga omwe dhi kanitha odhindji."

Kuume aalumentu oyendji, unene aamati mUuninginino miigongi yaagundjuka oya li ya dhiginina. Ote tumbula mboka ya dhiginine okugongala ye vule ooyakwa-wo oyo.

Aamati yomegongalo lyokOnesi.

" " Oniimwandi
" " Onaanda
" " Okahao
" " Etilyasa
" " Onangalo

Shika osha holola nga kutya, Kalunga okwi ihupithile aalumentu omayuvi 7,000. Otwa nyengwa shili kaamentu haa pula ashike ya hokanithilwe mongerki yo inaa hala yakuthe po aakadhona yawo man!
Jason Amakutuwa

Indila ndje ooha dhuuyuni ndi dhi ku pe dhi ninge dhoye.

OHOLE YOSHILI OTAYI PUMBIWA

Ovakwetu ovakriste, tu kaleni nohole yoshili ohole yoshili ihai hafele ouwi kai hole eshi inaashi yuka ihai handuka fiyo alushe ohai lialuluka diva, ihai kwatele onghone, kai li ngashi oushiinda tau yolo kekekee yo ongone i li medimo.

Tu efeni ohole yokadila aka kalukwa ohole. Okadila aka kohole oke li ngaha:- (1)Otake ku twala pomaa-di owishi nopomaadi eenyiki nopomaadi elonga ile pomeva wa fya enota. (2) Otake ku twala yo ponhoka eyoka. pongwe nopongoshi pondjaba ile pomhanda.

Hano tu tongoleni eehole. Eehole odi li pavali yotete oyei yOmwene wetu ye mu dipaifa komushiakano a kulile ovanhu koulunde wefyo. Onhivali oyei ya fa edina lokadila, tai twala mekano tai dipaifa eemwenyo dovanhu vahapu. P.H.Namolo

Vilho Shikosa, Outjo, ota popitha ta ti:

Oshoka Omuwa Oye Ombepo, na nkoka ku na Ombepo yOmuwa oko kwa kala eipangelo. Ihe atuhe mbaka tatu tala niipala ya sikululwa eyadhimo lyOmuwa ongashi moshitalelo, otatu shitukithwa tu fe efano tuu ndyoka omeyadhimo okeyadhimo, ngashika Omuwa awike Oye ngoka Ombepo ta vulu okushitukitha.

Ngoka u na natango Oondjalulamasiku 1969, inaayi pwa po; onawa ngele to yi shunitha kOstola yomambo manga Apilili inaagu pita.

O M U K W E T U

Oshifo shOngerki onkwaevangeli paLuther yomOwambokavango

Die Tydskrif van die Evangeliese

Lutherse Ovambokavangokerk

Oha zi mOniipa.

Omukuluntu gwoshifo/ Hoofredakteur omumbisofi

Dr. Leonard Auala,

Amushanga/ redakteur S. Ekandjo

Ondando komumvo mOwambo 70c

kUushimba nOkavango 90c

Kombanda yomafuta R1.30.

Oondando nomambestelo naga

tumwe kOmukwetu,

Oniipa, Pk. Ondangwa, S. W. A.

Oshinyolwa shuule

wondeimi	1	otashi futilwa	R1.00
oondeimi	2	" "	R1.90
oondeimi	3	" "	R2.70
oondeimi	4	" "	R3.40
oondeimi	5	" "	R5.00

Oto vulu okutuma efano lyaashoka wa hala shi tseyithwe nomatumbulo wo gasha ngele ope na.

THE FINNISH MISSION PRESS
ONIIPA P. O. ONDANGWA