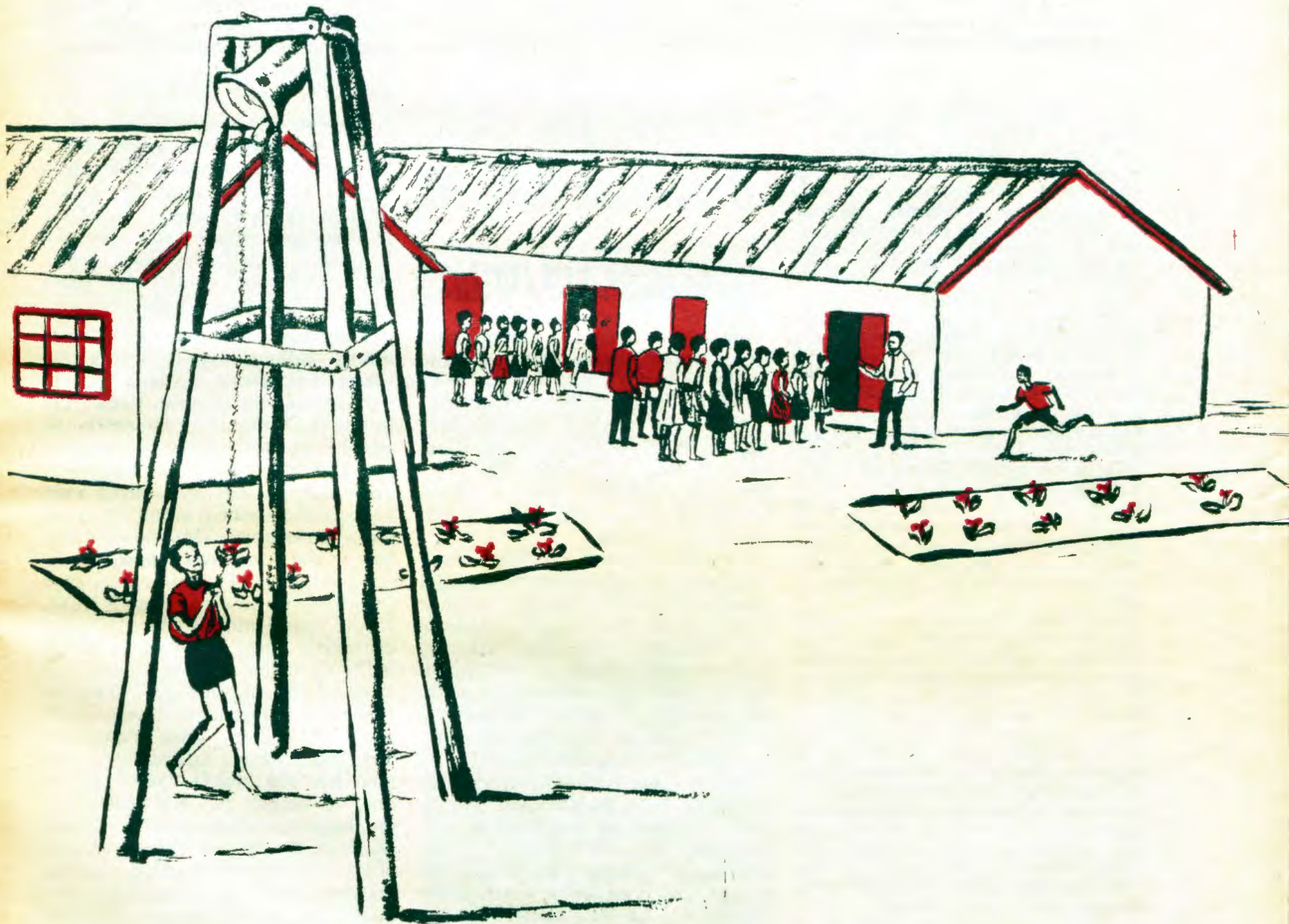


OMUKWETU





Elaka lyOshiwambo nOmbimbeli

Iilyo yi vule 20 yokomitee yelundululo lyOmbimbeli melaka lyOshiwambo oya li ya gongala moshigongi shawo eti-16.1.69 mOshikuku. Ongundu ndjika oya zile miilyo yoongerki adhihe ndatu dhomOwambo, ongérki yaAngilikana, yaKatolika naandjika yetu yOwambokavango, noya li ya gongala opo ya tseyathane noya tale nkene taa vulu okulongela kumwe moshilonga shika shelundululo lyOmbimbeli.

Oshigongi shika osha li sha hiywa komusitagongalo C.Pauw, ngoka e li amushanga gwelundululo lyOombimbeli dhehangano lyOmbimbeli IyaSuid-Afrika.

Ongomunashipundi omusamane Pauw moshigongi shono okwa ti: "Ehangano lyOmbimbeli IyaSuid-Afrika olyo omuna gwehangano lyOmbimbeli IyaBritania nolyiilongó. Otali ka tsakanitha omimvo 150 omumvo tagu ya, nomolwasho otu nomalongekidho omanene ngashingeyi."

Omunashipundi Pauw okwa gwedha ko natango a ti. Ehangano ndika kali shi nando ongerki, ihe olyo omuyakuli gwoongerki. Tali yakula oongerki adhihe naandhoka kaadhi li mongonga yoongerki dhomuuyuni." Elalakano Iyehangano ndika omusamane Pauw okwe li yelitha nawa kutya, olyo oli li po, opo kehe gumwe a mone Ombimbeli melaka Iyaandjawa. Ombimbeli ayihe ya pwa otayi gu R2.30, ihe ehangano otali landitha ngaa 75c adhihe, omusamane osho a fatulula. Omumvo gwa zi ko Oombimbeli dhi vule omilyona yimwe odha taandelithwa muAfrika Iyomuumbugantu alihe.

Omumbisofi Dr.L.Auala nomukuluntutumwa Mikko Ihamäki oya li wo ya kala moshigongi shoka. Oshigongi oshikwawo ngashika omusamane Pauw okwe shi ningile wo mOkavango muJanuali numvo. Ehambelelo olyo ndika sho ongerki yaKatolika oya mangelulula iilyo yayo okulesha wo Ombimbeli. Nomoshigongi shika oya tokola okulonga pamwe nongerki yetu mokulundulula Ombimbeli yOshindonga. Aakaleli po yoongerki yawo oya zile mOmbalantu gumwe, mOkatana gumwe, nomOshikuku yatatu, kumwe aapateli yatano. Natango oshigongi shika opwa tegelelwa shi ka gongale ishewe mbala mOniipa.



Omuwa, okukala kwandje akuhe inoku holekwa

OU HA DILADILA OSHIWANA

Omudiakoni Paulus Shidiue okwa li a popifa ovakriste vomuTsumeb, kutya, omunhu ino diladila ouwa woye ponhele yoshiwana. Oku litala ove mwene, oko oungone woshiwana. Opo oshiwana inashi mona eyakulo komunhu womu sho, nena oshiwana osha dja mondjila youyuuki koshipala shaKalunga. Omukwetu oho diladila shike? Oshiwana ile oove mwene?

Tala, omwameme, omunhu nge omuxupi, nena oshiwana osho tashi ka landula ko ohashi dulu oku kala yo nomufika muxupi. Na nge nge otapa kala elai, nena ou taka landula oye elai. Onda hala okutya, oshiwana nge nge inashi hala okuhombola, ovanhu tava hapupalifa ounona vahapu moshiwana, ovo va dalelwa pondje yohombo, oshiwana otashi ka kala ngaali?

Ounona nge tava kulile mOshiwana vehena ooxe, na vehe shii oo-

EPUKULULO

Mpaka nda hala ndi mu pukulule one aakriste mboka hamu yi kUulalelo Uuyapuki, oku ka Iya noku ka nwa olutu nombinzi yOmuwa.

Sho haku ningwa omainyolitho, haku ndhindhilikwa owala oolye noolye ya hala kUulalelo, ihe aalungekidhi yUulalelo ohaye u longekidha wa gwana, opo kwaa ka hupe nando gumwe.

Onkene aakwetu aaholike, inatu hakaneni we kOwalitali. Oowalitali dhimwe oonshona tadhi gwanene owala aantu 18 Iwaampo. Ihe tse nee mba hatu thikama pethimbo limwe, ohatu kala 30 Iwaampo. Kandi shiwo ihe kutya, ngele aantu 18 oyo ya gwana kOwalitali, mbeyaka 22 otaya ka tsa oongolo peni? ko ihaa ku taambelathanwa.

Aawe, inashi kala ngaaka aamwatate. Natu endeni ngaa pamukalo omwaanawa. Inatu ningeni ontentekeli kayi nwa genono. Uulalelo ihau vondoka, opo u ka nwe enono, wo kau shi ontaku, u tye pamwe oto ka nwa ehete.

Aantu yokiipundi iyali yuudha otaya gwanene Owalitali. Ano waa thikame ngoye gwokoshipundi oshitine, manga pu na itatu yi li komeho goye.

Oshipu okuya kOwalitali hugunina ngele u wete kwa hupa ehala shi vule okuya u ka thininike ngoye u ka lombwelwe kutya, tegelela manga.

xe, tala ove na oudju okwiitavela Kalunga Tate. Tate ote lihongwa kokaana meumbo fiyo oTate womeulu. Joh 1:12. Olyeye okaana taka kulu ke li kokule nondaka yaxe. Oke na okukulila pokati keendaka edi mbali yatate namukwamhalanga, meme. Okahokololo ta ka ti, Oshikoko, shikoko oha dala omai, ohaa fudike medu nde tai, ihe a kalele aye, ohai, ta ililile, nena omayi aye ohaa tendulwa xe ehe po. Omumati wange, tala Shikoko ta fii omwalikadi mufimba ye te mu fii po ina mona okaana, nge taka monika, ota ka dalwa kwete ina aeke. Shikoko xe manga a ya. Ovamwameme ooshikoko tava hapupala mokati koshiwana

Ounona voshiwana, otava nyengwa okutunga omaumbo. Otava itavele ngaalipi eumbo laKalunga okaana ko inaka kulila meumbo? Tala mongula omumati ou oku li pOndjondjo, omafiku makwao oku li kOkaiti nokandjato kaye peke, ota hokwa peni eumbo ye okwa kulila molweendo. Ehol.21:3.

Eenghundana dovanyasha otadi holola odjulufi yokufika keulu. Otava kundafana ngaha: Hai ti, ove kahewa kange owa hala okuhombolwa kulye, nokomunhu a tya ngaali? O, onda hala okuhombolwa komumati iha kufa mo omaholo mahapu. Ee, ove, ame onda hala okuhombolwa komunhu a longwa oukalunga (Ombimbeli). Inai hala okuhombolwa kenyuwana, oo, ina longwa. Ovamwameme ofye omongwa woshiwana. Mat. 5:13-16. Keshe umwe moshiwana ota pulwa oshiwana. Tashi ti: omunhu na diladile ouwa woshiwana, keshe umwe wetu moshiwana Omwene okwe mu nangeka moshiwana (mepya) 1Mos.2:15. Owa nangekwa moshiwana shoye kuKalunga. Eumbo leni olo ongerki yoye yotete omo to longele mo Kalunga koye omalongelokalunga. Itashi kwafasha, nge ho kala mongerki keshe efiku, oku eumbo la ninga embulukwena lovalunga (eembudi). Oukriste nau hovele meumbo wa yuka kOngerki, kofikola, pondje yeumbo, moshiwana. Oukriste nge inau pama meumbo, pondje itau longo sha. Hoveleni hano muJerusalem, Judea, Samaria fiyo exulilo lounyuni.

Tala ohandi uya dja. Ou ha diladila oshiwana moluhepo lasho oye ha longifwa kOmwene woshiwana Jesus Kristus Omukulili woiwana.

Malakia Hauuanga

Opa kala eefina dinene okumona omunhu oo ta kala nokufila oshisho outeku wopakriste momaumbo mongerki yetu.

Ndelene eshi Kalunga iha dipaelwa omona, eshi nga apa te mu xupifile, osha kala yo olupandu linene mokumona meme natate Seppälä mokati ketu nova ulikwa va longe oshilonga eshi.

Momudo wa ya momaongalo mahapu, okwa ningwa oyoongalele oyo movakulukadi novalumenhu mumwe novanyasha ovo va teelela oshilonga shouteku mongula, nde okwa konekiwa kutya, oku na ondjala inene younongo mouteku womaumbo. Omapulo mahapu no maetopo oiningwanima ii tayi nyono eehombo oye shi ulika kutya ovanhu ova djuulukwa okuulukilwa ondjila ipe tayi va kwafa.

Otu na olupandu linene komapukululo oivike inini a ningwa mEngela, nde ohatu fimaneke yo ofikola oyo tai hovele neudo mEngela tai kala konyala omudo aushe. Omwene wetu pombada na amene oshilonga eshi. Ashike ekemo otali kala nga natango tu opo kutya: Ava va fyaala ko komambo otava ka monenwa tu omhito yokufikwa puvo? Nande tu na yo okulipula noukolele waao e litula meyakulo li fike apa. Osheshi oye omunhu yo ha longo nota loloka nota shi dulika a kwatwe kounghundi munene ngashi sha konekwa yo movatetekeli.

Kalunga ne tu amenene oshilonga eshi shouteku womomaumbo mOngerki yetu, ye na nghonopaleke yo nakulinekelelwa oshilonga eshi nomomudo ou.

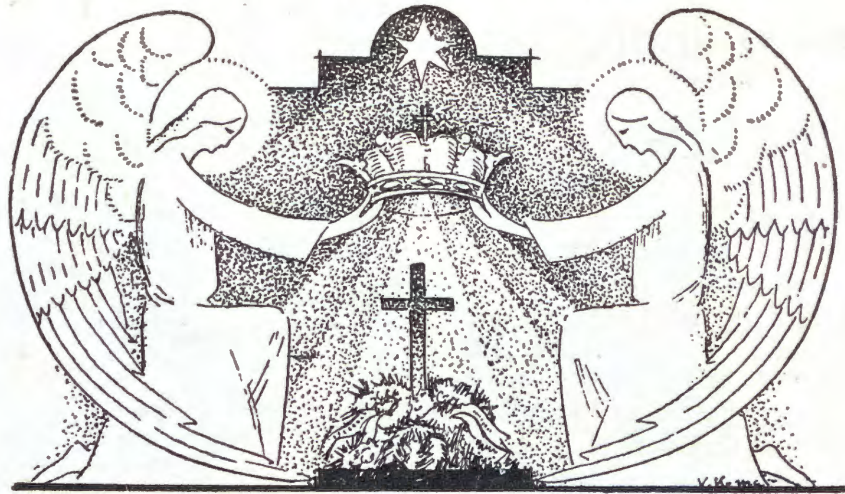
OHOLE YOMWENE

Ndele vakwetu ohai mu shiivifa onghenda yaKalunga, omaongalo etu omOwambokavango.

Ihandi shi mu lombwele oku mu pangela ndelene onda hala oku mu yeleka koilonga yovakwetu ohole yeni ngenge yoshili.

Ngashi fye otwe mu pandula osho kaleni mu va hole moshipala sheongalo.

Lot K. Shikukutu Tatekulu nakufya Simson Shituua



Oomwenyo dheni inadhi nika oluhodhi dho dhaa kale dha tila. Itaaleni Kalunga ne mu itaale ndje wo. Megumbo lya Tate omu na omahala ogendji ando ka kwa li ngeyi andola ta ndi mu lombwele tandi ke mu longele eha..... otandi galuka notandi mu ile mu kale wo nkoka ndi li, Jesus a ti.

Tatekulu Simson Shituua e tu fiya po eti-13 Januari 1969. A kala efimbo lile mounyuni. Nokwa li a loloka neenghono. Oye a fya koukulupe woovenevene nopehe noshidu.

Okwa kala moukriste eedula 66 okwa hombola modula 1897 pashi paani a kala kounyeumbo eedula 71, patengeneko a kala kombada yedu eedula 130.

Oukriste waye aushe inau nyongama, inau nyika onyuni. Nande moukwanyama ovakriste votete va li va fiwapo ngeefiye kovahongi Ovandowishi. Eshi oita younyuni aushe ya lwa, Simson oye a li omupukululi nomulongi nomuudifi wevangeli, kOndjiva, kOmupanda, Onamakunde fiyo Omafo nE-

ngela nEndola. A kala omulongi omukulunhu: A nangeka eefikola momikunda edi: Onghala, Omundudu, Ongenga, Ohaingu, Onanghulo, Ohanguena. Aishe ya ningwa fimbo ina yapulilwa oufitaongalo.

Okwa yapulilwa oufita 1925. A kala nomaongalo Ongenga, Endola, Ohalushu, Ongwediva. Ovakwaneongalo vomomaongalo oo, va yakulwa kuye. A tunga eengulu deefikola 10 mEndola neengerki 2. A kala shitimukupulwakule, nande a li oshingudu nomukulupe, moshitaingerka shOukwanyama. Oku dja kEenhana fiyo Okalongo a kala omuyakuli. Osho ngaha oshilonga shaKalunga sha tandavela mOukwanyama omolwatatekulu Shituua.

Ongerki onghwawambokavango oyi shii okutalela tatekulu Simson mefano la fa lakuku Martin Luther ou a yelifa Evangeli. Kuku Simson a humbata Evangeli momafimbo oita nomalwoodi. A twala Evangeli keenhu deehamba nokomalenga novafyoona e va udifila exupifo laKalunga.

A tewatewa komalenga amwe molwEvangeli. A tambulwa kwamwe kekwafo laKalunga.

Kalunga e mu pefa onhele mEndola modula 1925 nokuyakula omaongalo oo ane fiyo 1937, opo nee kwa monika ovafita vakwao vape.

Kalunga na djalekife ongerki ya ye eenghono, ku monike muyo omapenda nga Simson Shituua.

“Ou ta diinine ohandi mu ningi ongudi motembeli yange. Nedina laye ohai li shange memanya li toka noitali dimwa mo nande okusha.”

A. Mungungu



“Kaanangwe ondi na oluhepo”

Osho Lena yaKiimba a lombwele kahwaa ke Johanna yaNambili mangu ya li mondjila taa yi kohango kOnepandagulo, kutya. “Ondi na oluhepo munaangwe lwosikeleta nando oyepulata ootu.”

“Mukwetu ho li li oluhepo oho kumitha ndje, ho kumitha ndje tuu. Oto dhiladhila ngame ngame wo onga ityayela – kandi na omumati ongashika ngaa ngoye.”

“Wuu, dhaalumentu kaanangwe inahdi popiwa, oyendji owala ngele ya lyata oongaku pevi,” Lena osho e dhi yaka ta shuna ko mukwawo.

GwaNambili a tsikile: Oluhepo ohatu lu iyetheleni tseyene. Aniwa inatu hala okutsuwa koonyala twa fa omanyuwana. Oshoka ngele tandi tala opu na uuyamba owindji twe u holekwa monyalo nomuuntsa wetu unene tse aagundjukakadhona. Osikeleta yepulata ngaashi ndjono to lili mpono, oya tsilikwa owala muuyale mbwiya uupu wokohulo yepya lyaandjeni. Ngame Johanna ngashi to tala ndje itandi iyethele oluhepo Kalunga a pandje iikaha nomeho noonkondo dhokulonga. Ku wete nosiingela ndjiya ho mono te hondjitha, omo ya za moombale mo.”

“Nena ano oho tungu omatango peni?”

“Shili yakwetu omwi iningi ookwaashiinookundwa. Ngele epunyapunya ndyo mwi ilongo ou shi otali ku thuwitha we megumbo.

Aavalithi aape ya monika

Osha holoka omasiku ngaka one Aawambo omu na iilonga oyindji. Miipangelo aantu otaa ka pumba, ihe aatsikili otaye tu nyanyudha, osho omundohotola Kyröseppä a holola moshituthi shaavalithi sha li sha dhana mOmandjokwe omasiku ngaka.

Omwenyo omupe nge tagu ya muuyuni otagu pumbwa aaya-kuli ye netilokalunga. Mefano otamu monika meme nomuyakuli gwe taa nyanyukiwa omwenyo omupe



Ethimbo ngaa ndyo ho ka koonna, ngame olyo wo handi kondo oombale nokutunga.”

Sho ya humuko nondjila oya thiki posasiona yomashungu ga tungwa omihingo niikuko mpoka Lena a za a tokola okwiitula miilonga yiitungomwa. Ngashingeyi shila ota yelekwa noogwaMushona, omangomba gokutunga gomomukunda gwawo.

Nangoye ou na onkayi yoskeleta yepulata? Iilonga omayele komukwiyu.

Methimbo lyohungi ndjoka ya li ya tsikilwa konima yeyapulo noyuulalelo, omundohotola okwa ti Aavalithi oya simana unene, oshoka otaa mono ompito yokukundathana noyendji esiku kehe. Shika osho ompito ombwanawa yokupukulula. Ihe sho tamu ka tsikila natango oshiwana. Oondunge otadhi gandja owino wiilonga.

Omundohotola okwa dhimbulutha ishewe aayapulwa nokuyakumagidha kutya, oyo ye li po iilyo yegongalo. Nonge taa ka enda nondjila yuukriste, aagundjuka otaa ka hala wo okukala ngaaka.

Omusitagongalo Eino Amaambo ngoka a yakula moshigalikaneno wo, okwa ti ngeyi: Ombimbeli oya tseye wo oshilonga shuualithi Kalunga mwene ota longo. Ihe etilokalunga tali pumbiwa. Shika okwe shi koleke notekisti yomOmbimbeli ndjoka tayi ti: Aavalithi mbaka oya li oonakutilakalunga, yo inaa longa ngashi Farao e ya lombwele. Oye etha uumati u kale u na omwenyo. 2 Moses 1 : 17

Omusamane Amaambo okwa gwedha ko, omalongo oko geli tamu ke ga kondjitha, tileni Kalunga.

Eyapulo ndika lyaavalithi etiyali, lya ningwa moshipangelo shaNandjokwe, ihe oyo aatango ya nyola omakonakono agehe moshAfricaans konima yoomvula ndatu. Yatu yomuyo otaa ka tsikila kOshakati uule woomvula ndatu. nopo ihe taa pewa oonzapo yuupangi wowene.



Sho nda kala lwotango mehangano ndika lyaagundjuka notwa yi nalyo kOkavango omumvo gwa yi, onda kala no-shimpwiyu shili te konakona kutya, ehanganano ndino lyaagundjuka, elalakano lyalyo olini, notali pula ndje shike? Onda li nda tameke mpa.

Petamekoelela sho twa thikama pOngwediva eti-29.9.1968, manga tu li mololi, tate Munalye okwa ti kutse atuhe: "Oita yohamba oyo!" Oshitya shono osha li oshitsimukumo kutse oshoka okwe shi popile mumwe negalikano lyelaleko, notwa yi ihe mela lyondjila.

Elongelokalunga pOniipa olya ningilwe kuPastor S. Mvula. Gamwe gomomalaka ga uvikile mo oga ti: "Thikama u lye oshoka ondjila oyo onde, u na okweenda nayo." Etumbulo ndika olya li lya nyatipaleka omugundjuka kehe. Etumbulo ekwawo, omugundjuka oto opaleke ngiini okukala kwe? Ongele

OKUKONGA OMUKADHONA

Pethimbo nda li omugundjuka, nda li omunyanyamagulu onda li he dhiladhila ngele nda hokanwa onda pwa, nda mono tate omugundjuka.

Twa mono ko okanona kamwe uunona wa ningi omulongo twa pewa kutate omulongo.

Uukulupe wa adha ndje nda ningi omuvuntu. Okapala itaka yele we ngele ndi kuthe omeya nothewa. Tate omugundjuka natanango, ohe endaenda nomikunda a mono mo kuume ke, ngame kandi wetike we.

"Za po kakulukadhi ngoye. Thikama, inda koonyoko. Kii na noonangwasha yiyeyo yoongungu." Ehodhi tali ndonda ngele ndi tsuwe omukumo. Shaa tu nda dhiladhila ethimbo lyuugundjuka ohandi lili omahodhi.

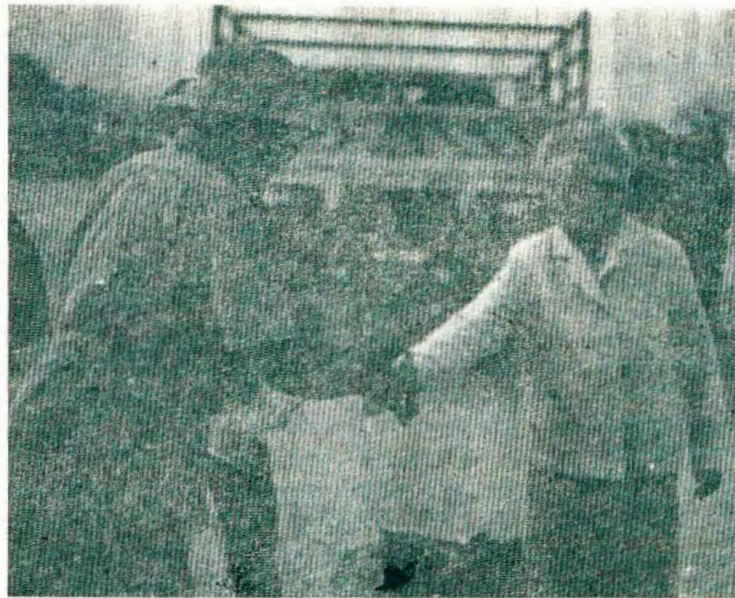
Aamati oye na oshege hashi endeke kombunda uuna te ku lilile omapembehodhi, okuume ke lwotango. Na, pa pite u tale oomvula ntano u tale nkene te ku yemateke.

Takamitha mukadhona kotoka kuume kandje, ngele e ya kungoye, mu litha, mu litha, ngoye muyalula u tale tango okukala kwe.

Shino tandi shi mu lombwele uuwanawa weni yene, haku mu tegitha omwigo, aawe, ogoku mu opalela tuu, mukale mOmuwa.

Ihe otandi ti, aamwameme; ethimbo olyo efupi okehe ano naa mboka ye na aakiintu, naa kale yafa kaye ya na, oshoka olupe luuyuni mbuno otalu hulupo.

Eino J. K. Aludhilu



Nayamwe yomaatumwa oya kala po wo aagundjuka sho ya li taa lalekwa yaye kOkavango. Mefano otatu mono kuku Haapanen oye gumwe a kala po. Ota ya minikathana natate Amakutuwa

tii utha koohapu dhOmuwa. Osha fa sha li tashi pula omugundjuka kehe a thike metokolo lyolyene, a thike sigo poompadhi dhaJesus.

Omahambeledondjimbo oga li tagu uvika sigo omuushiinda wOniipa. Ongulangula sho twa pendukile okuya mela lyondjila, tate Jason Amakutuwa okwa ningile egalikano a ti: "Oshikukutu meesha, oshitalala momupolo, Nampango tu uva, Amen." Ndika egalikano lyopavalelwamo. Methano otatu mono tate Amakutuwa taa minike nakuku

Haapanen. Otaa paathana omake tse tu ye mela lyondjila.

"Kalunga ketu opo e li, Kalunga ketu megulu mwi, Kalunga ketu oye oshili. Oye e tu shiti." Osho twa yi tatu imbi. Eimbilo ndika ohali imbwa pautoni wiita yaKristus, nongashi osho tu li.

Twa ya mela lyondjila. Okashana meyeleko, Onamutuni meemwili, Oshome-



Israel Negumbo pokati kookume ke yaali na Frans Kankondi kolulyo

ya meembada. Oshaanda nasho tashi ya. Elundu nalyo lye tombelengendje. Okavango taka nika, Mupini twe mu pa omolo, Mpungu twe mu pe omake, Nkurenkuru naye tee tombelengendje. Rupara nani tu ku mona nga?

Ihe nando ongeyi, ondjila kaya li ompu nando. Nando twe ende omutenya aguhe nuusiku auhe, onke nga twa ka thika esiku etiyali mokati komutenya. Oshigwana shi na Kalunga kasho ihashi nyengwa kusha.



Mokavango

"Iifupipika," olyo lya li edhina lyongerki. "Jesus Kristus," edhina lyoshigongi shoshene. Ondi itaala Jesus omo a li moshigongi shika she mu lukilwa.

Pula ndje ne u tye, sho nee wa tala, owa dhimbulula shike mehangano lyaagundjuka? 1. Omugundjuka ta mono ompito yokwiiutha koohapu dhOmuwa. 2. Aagundjuka taa dheuililwa muKristus. 3. Aagundjuka taa kuthwa monyalo, notaa nyatipalekwa okukondjitha satana. O, taa! Inoo kala mehangano ndiyaka ino tala. Twa shuna ishewe mondjila yetu ondhigu notwa thiki nawa.

Kape na ondjila kayi na uudhigu, no-dhokevi wo kadhi na uupu.

Israel Negumbo

ESHIIVIFO

Ovafitaongalo

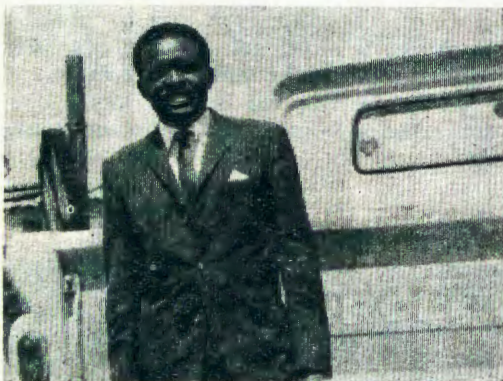
Ovaimbifi

Eengundu dovaimbi momaongalo Kalunga na hambelwe eshi noneudo twa pewa odula ipe omo hatu dulu oku mu longela tu nomalutu a pama neemwenyo da yela da kosholwa kohonde yOmwene wetu Jesus Kristus.

Kalunga ngenge eshi hala note tu pe eenghono otaku ka ningwa oyongalele yomalwiimbo moitaingerki, omolw elongekido loshivilo osho shinene tashi ka kala ko odula tai uya, 1970.

Omafimbo neenhele doyoongalele otadi ka shiivifwa komesho, ngenge meme Aune Hirvonen a aluka kefudo. Eli eshiivifo alike lotete.

Ofye ovakriste aveshe tu litweni omukumo mokwiilikanena omalongo ngikido aeshe taa ningwa, opo omapuniko aTate KALUNGA a kungulukile ongerki yetu noshiwana shetu. *T. Ndevaetela*



Toivo Ndevaetela

ILA KUTSUMEB U TU KWAFE

Olo eifano, twa ifana nalo omwiimbifi wOngerki yetu Toivo Mateus Ndevaetela, omutaleli weefikola domOukwanyama. Otwe mwiifana e tu kwafe moluhepo letu. Otu na oluhepo meongalo letu, katu na omuwiliki wolwiimbo.

Ofye eembwitiwambo, Ovawambo, ohatu longifa elongelokalunga lOngerki yOwambokavango, shaashi katu na etukauko pokati ketu nOvawambo ovo ve uya koilonga ovaunguli. Mongerki yetu medu eli, laUshimba, otu na elongelokalunga moiwana ei ya dalelwa mo, Ovana ma, Ovaherero, nde otwa ama unene kelongelokalunga lOwambokavango. Haku tya otu na ongamba pokati kelongelokalunga letu naalo lokOwambo aaye, omolu elaka, ohali ningwa melaka letu.

Omwiimbifi wetu, okwe uya okwe tu wilika nawa melunduluko lelongelokalunga, nomaimbilo amwe. Iyaloo Meester wetu, Omwene ne ku yambeke. Ye nako leke elongelo kumwe leengerki edi mbali, eshi tadi longo kumwe. Ohai hambelele Kalunga eshi ovakwaneongalo vomuTsumeb eshi Omwene a pashula omesho avo, va koneke elongelo kumwe leengerki edi. Efimbo eli, eengerki otadi pumbwafana moukumwe ou. Omwiimbifi wetu, a kuminwa oukumwe ou. Oukumwe, oku kala kumwe ohaku eta eenghono.

Malakia Hauuanga

Oshoongalele shovanyashaongalo mOvenduka

Omafiku aa ofye ovanyasha mOvenduka, otwa li noshongalele shetu sha kula, mOngerki yaKatutura. Edina loshongalele eshi ola li:

DIININA OKULONGA FIYO OHANDI YA 1Tim. 4:13. Otwa li yo twa mona ovaenda ovafimanekwa vahapu va dile koilongo noi-longo. Elongelokalunga la ningwa kovafitaongalo ovafimanekwa K. Dumeni na tate P. Laukkanen. Moshuudifilo mwa fikama Pastor, K. Dumeni mokulesha Joh. 7:40-52 oye okwa popya: Mounyuni omu na ovanhu ve li po eengudu mbali. Vamwe otava ti: Jesus Kristus Oye omuprofeti akula omona waKalunga omunamwenyo. Vamwe ova limbililwa Jesus kave mu shi. Epulo ola li po le tu yukilila, fye mbela otu li mongudu ilipipo?

Okwe tu hokololela yo osho sha ningwa kovanyasha vakwetu vomOwambokavango moshongalele shavo kOkavango. Omweenda omufimanekwa ou opo a di kuSoomi no ta longo metumo kuKongo Pastor Seppänen, e tu etela omakundo a dja kuSoomi mokulesha Jer. 31:9. Okwe tu fatululila: Ovanyasha vahapu muSoomi ove udite shili eifano laKalunga notava tumbula: Omwene tu tuma keshe opo wa hala. Omushamane Diehl, omuwiliki wongerki onghwaevangeli pa Luther yomOushimba, okwa tumbula: Ovanyasha nye kaleni mwa



Abraham Haileka

xwama mokuudifa Kristus fiyo ote ya.

Pastor H. Dengeinge a tumbula: "Ovanyasha diinineni ouyelele weni, kanyateleni alushe muKristus. Paife omhito oyovanyasha nee." Eengundu dovanyasha da ifanwa melandulafano pamalufu ado momaimbilo nomahokololo. Hano oda li po ngaha ngashi tadi landula apa.

1. Ongundu yovanyasha moshitata
2. ongundu yovanyasha Klein Windhoek,

3. Ongudu yovanyasha Katutura

4. Ongudu yovanyasha Walvis Bay.

Otwa li ne twa tala omakishi eshi a li taa penauna omishila, wodimbo a li po ta denge weonga. Efiku eli ofye inatu hala oku li dimbwa po, osheshi mulo otwa uhala momudimbi wevangeli wa loka eemwenyo detu, noda tallekwa. Eengudu odo da findana pa maimbilo nomahokololo da pewa oihafifo.

Omufita wovanyasha omu moushimba tate G. Max, a tumbula: Onye ovanyasha otamu hakana mumone ondjambi yefindano yomounyuni ou, ndele momaimbilo eni nomahokololo eni, aishe ei ya fa ya ulika nana kutya, otamu tondokele mwa yuka kondjabi yefindano tamu ke i pewa meulu kOmwene Jesus.

Omufitaongalo mOvenduka tate J. Haufiku a holola ehafo laye linene mokupandula ovaenda ovo va dile pondje yoshilongo veile koshongalele, naaveshe ovo va li mOngerki aveshe e va halele epuniko laTate Kalunga mokushuna kwavo. Oshoongalele shetu sha xulifwapo nenangekonoupuna notwa shuna komaumbo twa hafa hatu ti: Omwene ashishe osho hatu shi ningi sha tumbula edina loye, efimano liha ninge letu, ndele nali kale ledina loye lafimana liyapuki.

Abraham Haileka

ONDA KANITHA

Eti-7/1/1969 onda kanitha oshipakete shi li moshako, oshi na iyata iyali, eshina lyokuhondja (Singer), ombayikitha ontokele, okakende koDetol nosho tuu. Osha kanena molweendo lwaBus okuza kuTsumeb okuuka kOwambo. Aasimane-kwa mboka mwa li pomathikameno goBus pomaha ngaka: Onyaa-nya, Tsumeb, Ondangwa, Omafo, Oshikango, nOdibo, ngele ope na ngoka wa toola oshipakete sha tya ngaaka toolitha ndje ko, otandi kambadhala okukunyanyudha.

Filemon Amkata Iino, Elim

OTATU YA PULA NGIINI OSONDAHA?

Omatalelopo, iituthi yokulya kwowala nenge okweenda oondjila oondee moosondaha osho naanaa tashi ulike okwaayapula esapati sho. Omusita S. H. van der Spuy, amushanga gwetumo lyoombulu nomukuluntu gwOngerki yawo muSuidwes-Afrika a ti.



Ds. Van der Spuy

Omusita van der Spuy okwa holola kutya, "Natu dhimbulukweni kutya, oshiwike ashuhe otwi ipyakhila ngaa niilonga yetu, nepulo oli li ihe mpoka kutya, otatu talele po ano uunake."

Nonando ayihe, (iilonga netalelo po,) oyetu, onkene ngaa tatu kala aayoni yoshipango shOmuwa."

Van der Spuy okwa gwedha ko natango ta ti, "Ombimbeli oye tu pitika tu hile mo okasino ketu ngele ka gwila momuthima osondaha. Shika oshilonga shohenda nosha pumbiwa. Ihe ngele nani oshi li ngaaka kutya, osondaha kehe okasino okagwila momuthima, nena ngame ondi na okutokola, ngele okweetha okasino kokene, nenge okufila oshilambo shoka."

OVAHAKULI VOHAMBA

Oondohotola yomukainhu Margery Grace Blackie, okwa pewa omafiku aa oshisho shoukolele wohamba yaEngland, Elizabeth pamwe neumbo laye. Oyo ondohotola yotete movakainhu okupewa oshilonga eshi kohamba, nale Elizabeth okwa hakulwa kondohotola Sir John Meir, ye oye e mu hakula pokumona ounona vane ovo e kwete paife.

Dr. Blackie ofikola yetando noyuhaku okwe yi manene modula 1932.

OTA GANDJA PO EHO LYE

Moshipangelo shaBenoni muSuid-Afrika, meme L. R. Barnard okwa galikana oondohotola nokudhenga peke opo ya kuthe mo eho lye ye li tsike mokamwanakadhona.

Okamwana Riti koomvula 17 adhike okwa ti, eho olya mona oshiponga sho ka li ka nukilwa esiku limwe komuluudhe. Oondohotola shoye li konakona oya dhimbulula kutya, itali ka longa we sha, onke meme Barnard a hala a gandje po eholye limwe li tulwe momwana ngoka e na natango okukalamwenyo okule. *Die Suidwester 3. 1. 1969.*

ESHIIVIFILO

OSKOLA YOVAYAKULIHAKULI MOIHAKULILO otai ka hovele meti-14.4. 1969 moshihakulilo mEngela. Oskola ei tai tambula oukadona ovo va pita St. VI.

Eembapila tadi pumbiwa odo: **Eindilo, ondobwedi yaSt. VI, ondombwedi yeongalo, epopilo lomufitaongalo.**

Tuma eembapila edi komukulunhu wofikola oyo.

*Irja Soikkeli
Engela,
P. O. Oshikango*



Onakusa mbaka taa monika oyo okuza kolumoho Erastus Uugwanga na Jason Angula

ADVERTENSIE!

AGT VAKANTE POSTE AS POSASSISTENT VIR OVA-MBOMANS BESTAAN TANS TE ONDANGWA POSKANTOOR.

Vereiste skoolkwalifikasies: Std. VII en hoër.

Aantreklikke salarisse word aangebied.

Aansoeke moet aan die posmeester Ondangwa gerig word. Persoonlik onderhoude sal toegestaan word.

OSHIPONGA SHOMBA-DHILILA

Nakusa Erastus Ugwanga nguka ta monika mefano ndika, okwa si eti-7/1/69.

Okwa adhika ta zi kUushimba uuka kegumbo lyawo kuElim. Ombadhilila yowala oshihauto she sha teka okatenda kontumba kohi yasho noshiponga shekandomo she mu faalele. Mukwawo "Amushembe" ngoka ya li naye okwa hupu. Iihauto mbyoka ya adhika wotayi ende nondjila ndjoka oyo ya ka lopota oshiponga shika kaapolosi, nekwa-tho lyaapolosi lye ya peha lyoshiponga okukutha omudhimba naangu a hupu ye mu fala moshipangelo shaTsumeb.

Eti-8/1/69 manga ndi li mOvenduka oongodhi dha zi kookume naanezimo lyetu muTsumeb nOwambo tadhii kugu oshiponga neso lyomumati gwetu. Esiku olyo tuu ndyoka ookume yomOvenduka oya gandja oshihauto shawo omagano shi fale ndje kOwambo nokupitula omudhimba muTsumeb. Meti-9/1/69 omo ihe twa dhana oshituthi shomumati gwetu momawendo gegongalo lyetu muFlim. Nakusa nguka nando ka li e shi kutya, ota si uunake, Kalunga okwa li e mu pe ombepo yokulongekidha eso lye. Oshoka okwa adhika a hokolola poyendji ongo ta laleke.

Oosa dhe odha lilwa kepipi kehe, oshoka okwa li omuyakuli gwaayehe. Ololi ndjoka a li he yi hingi oyo "Faalela" okwa endithamo aanona, aagundjuka naakuluntu. Uunene shika otandi shi holola kaagundjuka yongerki pamwe naawiliki yawo kutya, ependa lyetu Kalunga e li zimbula miilonga yalyo. Onke itatu vulu nando okutamaneka ehalye, ihe oku li simaneka noku li gwanitha.

Ngame wo pamwe negumbo lyetu otatu mu pandula amuhemuhe mboka mwii-pyakidhile, nge okudhenga oongodhi, nenge okulongitha iihauto yeni, nenge okutseyitha moowandaha nopomaha gli-li nogiili omolwoshiponga she tu gumu koomwenyo. Onke otatu ti: edhina lya-Kalunga nali simanekwe nuuna lwiiponga wo. *Leonard Mukwiilongo*

OSHIGWANA NE-KWATHO LYASHO

Ngele te dhiladhila shono sha tsakaneka ndje omumvo gwa ya mokulonga kwandje moshilonga shika shuupangi, nena ote ti, aawe, inandi hala we oku shi tsakaneka nuumvo. Omumvo gwa ya onda longa mokati kaanona moshigwana nokuya pa ekwatho taye li pumbwa. Ihe onda longa wo mokati kaakuluntu nokuyelithila uundjolowe moshigwana nenge womuntu mwenekene tau monika notau dhigininwa. Omuntu oto dhimbulula nuupu nkene oshigwana shetu oshakanitha uundjolowe pamikalo odhindji, nokashi shi nokuli oshipu okulonga nokuyelitha oshilonga shika.

Oku na wo oongundu dhi ilinodhi ili, ndhoka tadhi talwa wo aakwathi yoshigwana. Ihe eyooloko otali ka adhika ashike miyimati yomakwatho gawo. Oshigwana shetu natango dshi na omayinekelo gomakwatho gopendji. Iinima oyindji onde yi uvu, noyimwe onde yi mono. Yimwe hayi longithwa, ihe yimwe inandi uva nale ya longithwa. Shika osha pe ndje owino kutya, oshigwana otashi kanyatele natango miinima tayi yono po olutu lwomuntu nomwenyo, nokukanitha uundjolowe moshigwana ashihe.

Onda tsakaneka ongundu yambo ka ya taamba ekwatho lyaayikongeli yuwanawa wawo yene, nomoku li taamba ya mona mo etumpakano lyasha. Ihe ongundu o-

OMAKUNDO GA ZA KOTJIWARONGO

Ovakulukadi Ovawambo mOtiwarongo ove na paife okangudu kavove ka hole.

Apa mefano Ohatu mono mo ovakulukadi vamwe po, vamwe kavepo. Puvo opwa fikama omuwiliki wavo.

Fye ovakulukadi vongundu eitu udite ehafo eshi hatu pukululilwa mondjila yOmwene wetu Jesus Kristus noha tu pewa omatimbumbwilo apama eshi taku tiwa "ONDJOVO EI OYA PAMA NDELE OYA WAPALA OKUTAMBULWA JESUS KRISTUS EUYA MOUNYUNI A XUPIFE OVA-NAMATIMBA" 1 Tim 1: 15,

Ovaleshi ovaholike, ohatu mu halele yo mu kale mOmwene.

Mirjam Kapofi

Oto ende to litale peenho nokudana ondjiki, nokulitula ko eshi wa tamlulilwa mOseminali ile mofikola youpangi ile mo St V-VI, manga omangafifi mahapu a xupa ko. Epuko eli tali dulu yo oku ku hanga naave yo ou wa ninga efimbo mOseminali ile meevorms.

Omambo noikwafifo ikwao konyala oto i pewa efiku tuu olo ofikola ya tameka. Oixuna shili eshi omambo u na ashike oku a longela nawa moskopayoye. Nokulalakanena oinima oyo i li kondje yofikola. Fiyo efiku olo to dimbulukifwa komuhongi eshi ta ti: "Ekonakono oli li ko moshivike tashi uya." Opo nee to tameke okukufavati ngeno ndiba meembwa. Shoo ita shi kwafa sha nee okukola okambwa momulaulu. Onghee hatu hange edopo la duka unene muSuidwes yetu omu.

Tala omumwameme omuholike. Eshi twaxuwa omihoka komilungu, notu na oshitya eshi, twa manguluka. Ohatu dulu ngahelipi oku shi koleka, ngenge mofikola ou li mo ashike oku-

ntiyali oya dhimbulula oshiponga shi li po, noya tameka oku shi pa uusama.

Onda eta eyemato lyandje mpaka mokulonga oshilonga shandje, ihe tandi hambelele wo shonomumvo ngu nda thika mo ndi tameke ishwe oshilonga shandje. Onda hala nuumvo ndi tye: Tala iikulu ya hula po, niipe ya holoka.
Selma Nd. Ohenda Titus



Ongundumbimbeli nomuwiliki gwayo Ev. P. Isaka ta monika a thikama konima

kulupika oshipundi shoholomende. Paife ponho yokukoka emanguluko nena oto fitikile ashike eefa moshivanda. Ove mwene omunamaano, narde to tameke okulundila Kalunga nokutya, "Ame oihongwa otai nyenge nge." Eshi to ti ngaho owe li hongangaho shili fiyo ohonde? Naku-lihonga kwashili oyoo tuu ta tameke efiku ta pewa omambo komuhongi waye.

Ovanhu ngenge itave lihongo nena eeheno komesho loshiwana olo kali na omungo washa. Omulihongi washili oye ou ha diladila oinima oyo a lesa omutenya komesho yokukofa kwaye. Ye okwe li ningita elandulafano "rooster" laye nghee e na okulihonga oihongwa yaye moshivike. Oh, kaume, lihonga nonyanya man! Shi ningila ngaho owina ndee to i po nokahalu pembo opo u tale!!

Dimbulukwa omatumbulo mOmbibeli oo taati: "Oshiwana shi na Kalunga kasho osho oshi na elao. Unene eshi tashi dala edopo moiwana yetu, etilokalunga ola kana mo unene moiwana. Unene pefimbo lopaife. Lo etilokalunga olo efina lounongo aushe. Kape na ou ta dulu okukwata koshipululo, ndele ta tale konima. Ovaholike, epya ola tilyane-na eteyo, ndele ovalongi kave po. Indileni hano Omwene a tume ovateyi moilonga. N. M. Ndevahoma

OMUKWETU

Oshifo shOngerki onkwaevangeli paLuther yomOwambokavango Die Tydskrif van die Evangeliese Lutherse Ovambokavangokerk Oha zi mOniipa.

Omukuluntu gwoshifo/ Hoofredakteur omumbisofi

Dr. Leonard Auala,

Amushanga/ redakteur S. Ekandjo

Ondando komumvo mOwambo 70c

kUushimba nOkavango 90c

Kombanda yomafuta R1.30.

Oondando nomambestelo naga tumwe kOmukwetu,

Oniipa, Pk. Ondangwa, S. W. A.

Oshinyolwa shuule

wondeimi 1	otashi futilwa	R1.00
oondeimi 2	" " "	R1.90
oondeimi 3	" " "	R2.70
oondeimi 4	" " "	R3.40
oondeimi 5	" " "	R5.00

Oto vulu okutuma efano lyaashoka wa hala shi tseyithwe nomatumbulo wo gasha ngele ope na.