

# OMUKWETU

## SHIMWE ASHIKE ITAASHI KA HULA PO

Ehulilo olyo oshinima sha simana. Uuna to tameke sha, nena oho dhiladhila wo ehulilo lyasho kutya, otali ka kala lya tya ngiini. Ehulilo ohali eta enyanyu ihe esiku limwe ehulilo ohali hulile moluhodhi. Shika osha tseyika nawa mukukalamwenyo kwaantu. Ehulilo ohali ipulwa nkene tali ka kala lya tya. Ngiika oku na tu aantu aasama, haa tameke sha, ihe itaa dhiladhila ehulilo lyasho. Ihe naambaka wo haa ka yeelwa ngaa pehulilo kutya, oya li ye na okukonakona ehulilo, oshoka otaa ndhindhilike nawa kutya, uusama mbuka wa holoka po pehulilo, omolwasho petameko inaya dhiladhila nawa.

Aantu oya mona omahulilo giinima oyindji muuyuni mbuka. Oya mona oondjokana dha li po e tadhilulu po. Oya mona okandingosho kontumba kali po e taka hulu po. Oya mona epangelo lya li po e tali hulu po. Oya mona ezimo lya li po lya simana, e tali hulu po. Oya mona omasheko gontumba ga li po e taga hulu po. Oya mona uuladhi womeitaalo wa li po munima, e tau hulu mo. Oya mona wo uunye nuuhethi wa li po e tau pu po. Aantu ohaa tegelele iituthi iinene noya simana noya pwa po.

Aantu oya mona wo oomodela dhomizalo nenge dhiiyenditho dha li ko nodha nyanyukilwa kwaayehe ihe odha hulu ko. Oya mona wo omahulilo goondjala oonene dha li ko, ihe odha hulu ko, noya mona wo omahulilo gomimvo. Oya mona omahulilo gomaso omawinayi nomawanawa. Onkene ohaa ti: "Kape na omwenge inaatu lya."

Mosondaha yEpangulo Jesus ota popi omahulilo giinima iyali. Shotango ehulilo lyevendakano lyuuyuni. Ehulilo lyevongakano lyaantu kombanda yevi. Aayuuki mokati kaakanakonashanakalunga shi hule po. Oyitaali mokati kaasheki shi pwe po Mt.13:49 Iidhilu sho tayi kuthwa mumwe niyala. Omapu sho taga kuthwa mumwe noongongo. PaMbimbeli oshinima shika osha indilwa nale kaayengeli ye shi ninge, ihe Jesus okwe shi tindi. Mt. 13:28-30 Oshoka okwa hala



tu hulithe po ondhino yetu, uuhasha wetu, okwa hala tu u hulithe po ondjila yetu yokuya muulunde.

Okwa tseyika wo oku na iimpungu yimwe inaayi longwa natango, iilya inaayi helelwa, oshilonga shetumo inatu ninga ko sha evangeli opo li thike apehe Mt. 23:14 Aamati yeyakulo (aayengeli) oyi ilongekidha okuyakula nomesiku ndyoka.

Ashihe shika otashi ningwa pehu-

lilo lyuuyuni mbuka tu hole, twe u ika twe u simaneka, tu u shi, twe u hokwa nohatu u landula. Onkee taku tiwa: Kamu shi shi ohole yuuyuni oyo okutonda Kalunga? Noonkwawo: Inamu faathana we nuuyuni mbuka.

Jesus ta ti, osho tashi ka ningwa pehulilo. Oto mu zimine? Oto mu itaale? Shimwe ashike itaashi hulu po osho "ohapu yaJesus." S.Ekandjo



## Eenhokolwa dEpangelongerki

### TONATELA OMATAMEKO GOYE

Kandi shi wo mpoka wa tameke, naashono wa tameke nuuna we shi tameke. Ihe tala, ondjila yoomaila e-thele limwe oto yi tameke nonkatu yimwe ayike. Noto katuka sigo wa hulitha oshikako ashihe.

Okwa li ku nomukwaniilwa omukukutu. Oye okwa nyanyudhwa komahapeko gaathigona. Esiku limwe okwa kundana nkene aantu ya hambelele omuhambudhi gumwe sho e shi okuhambula iinima iwanawa. Omukwaniilwa okwa tumu ko aantu ye ke mu tale e ye a hambulile omukwaniilwa okalinga koshiyela.

Okalinga sho ka pu okuhambulwa, omukwaniilwa okwa ti: Okalinga oko opala naanaa, ihe hambula natango okatiyali ka fa nkaka kotango. Omuhambudhi okwe shi ningi. Ihe omukwaniilwa ina gwana okwa pula natango okatitatu nokatine sigo e mu hambulile elyenge ele.

Omukwaniilwa okwe mu lombwela: "Ngele elyenge lya pu opo to pe-wa ondjambi yoye." Ihe elyenge sho lya pu omukwaniilwa okwa ningi ngiini? Ondjambi te yi gandja ou yi shi?

Omukwaniilwa nguka ke na henda okwa kutha elyenge ndyoka nokwa mangitha nalyo omuhambudhi ngoka. Oye okwa kala ngaaka omupika aluhe manga omukwaniilwa nguyaka kwa li e nepangelo.

Ndhindhilika, okalinga kotango okavala uupika waaluhe. Kotokela ano omatameko goye, uuna to yaka lwotango, uuna to lundile lwotango, uuna to yugu lwotango, uuna to hondele lwotango, uuna to fundju lwotango, uuna to nu lwotango iikolitha, uuna to sheke lwotango, uuna to ende muumbudhi lwotango, uuna to iyageke oohapu dhaKalunga lwotango, uuna to etha egalikano lwotango, uuna to idhimbike Jesus gwoye lwotango, nuuna ito ehamekwa we koondjo lwotango.

"Uulunde inau pangela momalutu geni omasi mu vulike kuwo.

1  
Epangelongerki tali pandula unene, medina longerki, Ehangano la-C.D.M. eshi la kwafa ongerki yetu R10,000.00 omolwetungo longerki mOshakati.

2  
Epangelongerki la tokola omwevangeliste Markus Amushila a yapulilwe oufitaongalo pamwe novalongwafita tava ka yapulwa neudo, ye a nangekwe omufitamuyakuli meongalo laNayena.

3  
Omolwouvela wa kwata meme Lea Iilona Kolehmainen, Okavango, nowe mu fiifa po oshilonga shaye shomokati kovakulukadi, Epangelongerki tali indile meekulu Eevi Halminen a kwafe mangha moshilonga eshi kOkavango.

4  
Epangelongerki tali wedele koshilonga shomuhakulidiakoni, Otilia Kaholongo a yakule yo mokati kovakulukadi moitaingerki yomOwambo. Epangelongerki otali pandula yo notali kumike oofelani, oohefelo novakulukadi vamwe ovo va kala ve li tula meyakulo eli, va twikile natango mOwambo nokOkavango.

5  
Epangelongerki tali koleke efaneko lovalongi vEnongelo lovayakuliongalo mEngela, oimaliwa 30c, ofuto yoikulya, i wedelwe nomunashoongalele keshe a fute 50c moshivike okudja pehovelomudo 1969.

### AMUSHANGA GWIIFONGERKI

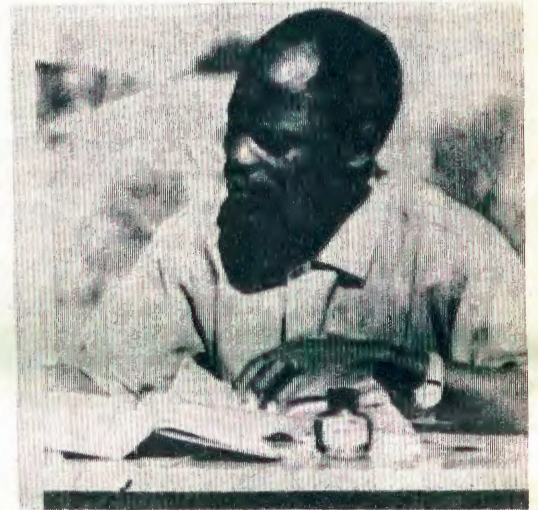
Pamwe aaleshi yOmukwetu ya dhibbulula nale nokuli kutya, miifo yimwe ya landulwa koshifo shika inamu kala edhina lyaamushanga ngaashi lya kala mo okuza moonomola adhihe dha tetekela.

Aawe, Omukwetu okwa kala ngaa ta yakulwa kaakwathi yalwe ethimbo ndyoka, oshoka okuza pehulilo lyaSeptemba amushanga gwiifongerki, omusamane Leonard M. Shemuvalula, okwa lunduluka miilonga yuuhamushanga wiifongerki nokwa taamba oshilonga shuuhamushanga wepangelo lyOwambo.

Omukwetu ota pandula unene eyakulo lyomusamane L. M. Shemuvalula nomukumo neitulomo lye moshilonga shiinyolwa yiifongerki note mu halele eyambeko lyaKalunga li mu landule nomiilonga iipe e yi taamba ngashingeyi.

Manga aayakuli yalwe yOmukwetu yi ipyakidhila naye, ohaluka ongula yesiku limwe omusamane omufupi te ya ti imemeha. "We yapo tatekulu?" "Eeno, nde yapo manga." "Oshike to ti, manga.....? Epangelongerki lyeti-12.10.1968, lya gongalele pOniipa, olya langeke omusamane Sebulon Ekanjo, omusitagongalo gwokoTshandi, Uukwaluudhi miilonga yuuhamushanga wiifongerki, mombelewa yOmukwetu.

Omusamane nguka okwa pita o-seminali yuulongi mOngwediva 1959. Okwa kala moshilonga shuulongi megongalo Nakayale okuza 1960-1962. Opo okutameka 1963 okwa taambelwa moskola yuusita moka



Omusitagongalo Sebulon Ekanjo

a piti mo 1965 nokwa langekwa omusitagongalo kuTshandi, moka a longo ethimbo alihe sigo esiku ndika Epangelongerki sho lye mu tembudha ko omolwoshilonga shiifongerki. Omumvo gwa yi amushanga nguka okwa li ishewe oomwedhi dhimwe moskola yiinyolwa yuukriste kuKitwe nosho enyanyu lyetu aaleshi sho te tu pe mo moowino dhi ili nodhi ili e dhi likola nkwiya.

Omukwetu ota halele ishewe amushanga omupe elago neyambeko lyaKalunga li mu wilike naampaka wo mokukonakona iinyolwa nomokupalutha oomwenyo dhaakriste mongerki ayihe niikulya yopambepo tayi pitile miilonga yomadhiladhilo noyiikaha ye. Shoka sha nyolwa oshi na ethimbo ele okudhimbuku kiwa shi vulithe shoka sha popiwa notashi dhimbiwa pokathimbo noka. Kalunga na hambelwe omaga- no ge kaaga wapa sha.

“Omwe tu lombwele nena ndjika oshili, nomeho getu oga tonata,” ndhika odha popiwa ongolupandu kugumwe gwAaherero mboka yi itala kutya oyo ye li po natango Aakwaluther muBechuanaland, ngashingeyi tali ithanwa Botswana.

Ngashi ongerki yaELK, ongerki yaaluudhe mUushimba, tayi longekidha okulonga oshilongatumo mokati kAaherero mboka ya halakana nena muBotswana, osho wo ya ningi omatalelo po, opo ya koneke onkalelo yaakalimo nkene ya tya. Etalelopo etine olya ningwa 7 Aug. sigo 4 Septemba gwomvula ndji.

Mondjila otwa mono oonime he yali, popepi kashona nondjila. Nesiku lya landula otwa adha okamatyona okayelele ka gundila kenota mondjila yimwe onkulu ngeyi, nuusino wako uyali we ka kalela. Oke tu pukulula nawa notwe ka pe ishewe ome ya okunwa. Nakuhokolola okwa tsikile ta ti, okamatyona nkaka ka ke li kokule unene noonime. Oka fa take tu faneketele efano lyaantu yomuBotswana ye li ando iilyo yongerki yetu ihe omolwomaudhigu gontumba oya fa ya loloka noya senota noye li ashike ngaaka mokati koonime (aaprofeti aafundja) noya falwafalwa nokuli.

Olweendo nduka oluukilile kuumbangalantu waBotswana okutalela po okangundu nkoka ka kala petale lyaNgami. “Moondolopa adhihe

### OMUNGOYE OMWENYO GWANDJE TAGU KONGO EGAMENO

Ekodhi otali tengelele kombanda yokadhilona, noshihomo shomawawa galyo otashi uvika. Oompoka okadhilona otaka kambadhala okukonga eholamo opo ki igamene koshiponga.

Eyele ndika natu li faathanithe nomuntu. Omuntu ota dhimbulula epupo lyoshiponga shili popepi, opo mpoka ota tala koombinga noombinga ta kongo egameno. Okadhilona okahupithwa komawawa gayina, omuntu ota hupithwa kulye moshiponga shika shekodhi (satana) ngoka a hala omwenyo gwe?

MuKalunga omo amuke omwenyo gwomuntu tagu hupithwa. Kalunga oku na omawawagameno omanene mo to hupithilwa mo manga oshiponga tashi pitililepo. Omwenyo tagu holama muKalunga ogu nelago oshoka megameno moka kamu na nando epiyaganeko lyasha.

*Taapopi naMagano Amoomo*

mpoka twa thiki otwa kambadhala, tango okumonathana nooyene yomikunda, opo ihe konima aayevangeliste nenge aakwathi yawo,” osho omuhokololi a ti. Mokati kAaherero mbeyaka omwa kala wo nga ongerki yetumo lyaLondona ndjoka hayi ithanwa “United Congregational Church.” Noya longo ethimbo ele okuza 1904-1908. Ope na wo ongundu yaAambanderu, ihe ndjino oyi itula mongerki yaaluudhe, “Afrikan Church.”

Mokutalela po ehala limwe Ngajtito, okwa dhimbululwa aantu oyendji oya ya noshimpaga shaJakob Muhare, shono hashi ithanwa “Apostolic Spiritual Healing-Church.” Oshimpaga shika osha hokololwa wo aniwa oshi na eyaludho kii-lyo yasho.

Onzapo oya ti kutya, otwa ningi oonkundathana nAaherero mboka twa aadha po osho wo oowandaha. Konima yowandaha otwa kala natango pamwe niilyo mbyoka yi itala oyongerki yetu. Oyo ya li aakii-ntu omugoyi naalumentu yatano. Omulumentu gumwe okwa ti: Omwe tu lombwela oshili, omwe tu etele ome ya gomwenyo. Ngele itamu ya we otatu ka nwa ome ya giingulu. Sha hala okutya, otaa ka fegulwa po komalongo gopombambo.

“Aalumentu yaali aagundjuka,” osho omuhokololi a tsikile natango, “Uatura Muatjetjeja naPaulus Kajata, oye tu indile ya longwe moskola yetu yaayevangeliste, nonge sha ka vulika ya ka ye wo moskola yuusita, nenge ya pewe eha mooskola dhilwe dhAakwaluther.”

Pomahala nomahala, mokati kuungundu woonakuhalakana okwa uvika omawi taga zi momauvito gomuule. Elenga lyAaherero, Rudolf Maharero, sho a talelwa po okwa ti: “Ngame, ngashi ndi li mpaka omutumba, ondi li natango omuna gwOngerki yaM. Luther.” Omugundjuka Viktoria Kandji okwa li a nyola ngeyi pomasiku ga piti po. “Aasita yaDr. M. Luther omu li peni? Otandi mu kundu nelaka ndi. Omulumentu olye e na oonzi ethele limwe e ta kanitha po yimwe, ita thigi po ando ndhoka omilongo omugoyi nomugoyi e ta ka landula ndjiyaka ya kana sigo te yi mono?” Luk. 15: 4.

Ashihe shika otashi ku dhimbulutha ashike u galikane Omuwa a tume aalongi meteyo lye oshoka olya tiligana.

Elundululo lyiitya mehempululo lyeitaalo lyokuNikea megalikano enene lyOngerki, ngaashi mUulalelo Uuyapuki, “Omuyapuki, Omuyapuki, Omuyapuki, Kalunga ---) nomuGoloria pangerki yaAnglikan olya konakonwa kaakaleli po yoongundu ndatu dhesiloshimpwiyu lyiinima yomelongelokalunga opalombwelo lyoshigongi oshinene shiilonga mbika.

Momagalikano ngaka, unene ehempululo lyokuNikea mu lundulundulwe iitya mbika mpoka pu na olupe luushimwe “ngame” pu kale “tse.” Ano ngeyi: (Ondi itaala) otwi itaala” naana ngaashi tashi monika nokuli mOkatekisa Okanene. Olupe nduka olwo olukulu lwa landula Oshigreka haShilaatina.

Efaneko lya tya ngeyi olya konakonwa ishewe 21-22 Aguste muWashington, Amerika nomupopi gwo-shinima shika okwa ti kutya, otaa lalakanene omukalo gwiitsa, iinkwanu noondanda oonene gu kale gu li ngaashi gwa kala shito. Okangundu nkaka oka dhiladhila ka ka gongale natango muNovomba nuumvo.

**Pulakena omumwandje ngoye u indungike omunandunge nomwenyo gwoye u gu endithe epola lyu uka.**

### Ondjila yoye oya yukilila tuu?

Omwene Kalunga okwe tu shita ovanhu ovayuuki, ovayapuki novakoshoki koshipala shaye tu he na shipwe. Okwa hala yo tu mu longele mouyuuki. Nena ohandi pulwa ile oto pulwa ondjila yetu oya yukilila tuu kuKristus ile oya yuka mekano? Ope na oinima oyo ya yukifa omunhu mekano, naai ye mu yukifa kuKristus.

Handi ku lombwele oilonga yee-ndameka ondjila yoye: oumbudi woi-pala, oihole, okukalela olwisho lwoipala, oukalele woikalunga, ooundudu, okutondafana, okutanguninafana, oukodi, okuliyala, okweenda moubudi, ondubo, okulitongola, oukolwe, eenhingo, nosho tuu.

Nde oilonga ya yukililifa ondjila yoye; ohole, ehafo, ombili, enuno, oukaume, efilonghenda, elinekelo, onheni noukoshoki.

Pwaa ivali ou li muilipipo? Oove u na ondjila monhopo youlunde, ile oove tuu ou ohonde yOmukulili ye ku kosha?

Omwene nonena okwa yelula omaoko aye a hala e ku shile monhopo youlunde. Oto shi itavele?

*R. Shuudifonya*



*Mefano ndika omusamane negumbo lye otaa lesa pamwe oohapu dhaKalunga, nokukonga ombili mudho. Yalwe ohaye yi kongo mokukolwa sho taa dhimbwa aniwa iimpwiyu.*

## OSHO SHA NINGWA MUSMELTER

Fye ovamati vomokomboni yaSmelter, ohatu pandula eshi twa tuminwa omudiakoni tate Paulus Shidiwe.

Mefiku eti-27.9.68 okwe tu ningila oxungi inene. Oxungi ei oya li ya fimana kufye. Otwa hovela neimbilo 214 nokonima yeimbilo omushamane D. Elia ou a li omuwiliki a lesa 1 Mose 8:20 nokwa fatulula ovelishe ei paxupi. Otwa imba eimbilo 478, opo ne omushamane

Shidiwe a hovela okufatulula oshilonga shoudiakoni. Ofikola youdiakoni ohai tambula omunhu ou a pita nale ofikola yoweevangeliste ile a pita St. VI. Mofikola ei ohamu jihongwa oinima ihapu, ndele omukangha woovene Ombibeli. Omu na oilongwa ngashi Etiek, ekwafo lotete moiponga, efiloshisho leumbo nolounona, ehistori loudiakoni, ouhaku womeumbo, efiloshisho leengholwedu, lovanaudu voshinamanena n.sh.t. oidumo oikwaliko noudia-

koni woovene. Ope uya omapulo: Etiek oshike? Efatululo nhumbi omunhu e na okukala, opo a wapalele onghalafano noshilongo shaKalunga. Oudiakoni oshike? Eyakulo tali dilile mohole yaKalunga muJesus Kristus, tali yakula omunhu keshe, osheshi omunhu keshe oku na ondililo koshipala shaKalunga. Otwa li twa uda oinima ihapu i hafifa notwa hokwa okupwilikina. Konima yehokololo lomudiakoni tate M.

Hauuanga a lesa 1 Mose 1:27,2:7 nokwa fatulula evelishe edi mbali. Opo nee twa imba eimbilo 472 nongalo yetu tai umbwa. Omweevangeliste J. Hishoono e tu twa omukumo needjovo daKalunga mudo mu nombili. Ngenge kamu na Kalunga, na ombili munye kai mo. Osho omushamane tate Hishoono a tumbula nokwa xulifa oxungi yetu neilikano.

Ponhele yovamati aveshe ovo:

*Daniel Elia, Natanael Shatonoka  
Smelte komboni Tsumeb*

## ETONGOKO LOMAUMBO

### EUMBO LOTETE

Efimbo la dja ko omunyeumbo okwa popya nexwamo kombinga yeumbo laye. Okwa li a fa e na eendaka tadi kongo oishindi da wana okuhokolola ashike osho tali ti kuye melao, meudombili nemwenyeko.

“Eumbo lange olo eliko lange la mana ndi na kombanda yedu.” Osho a hovela te limemesha kehafo.

“Otashi dulika nda loloka nonda kanifa omukumo, ndele okeshe tuu nde uya meumbo, ongo handi ende nda finda keendidolo deulu. Omwalikadi wange oku shi nge kokule e dule omunhu keshe womounyuni. Oku shii omaunyengwi ange aeshe, omikalo dange dii, nomashikulafano ange oo inaa yela omfimbo amwe ndele nande ongaha, oku hole nge nohe shi holola komikalo dihapu da yooloka. Ovamwange kave fi ovaengeli, ndele ihai dimine nande ndi tambule eeranda eemiliyona ponhele yau-mwe waavo vatano, nando ngeno ova kale va ninga eemhote, itashi ningwa!

Fye otu na omayooloko etu nge tu li, nopomafimbo amwe katu na olukeno ngashi tu na okukala, ndele eshi ihashi kala nande efimbo lile. Ohashi dimwa po diva, nohashi dimbiwa.

“Ohandi dulu oku shakenekwa koitilifi nokoitongolifi ihapu ngenge ndi li koilonga ile pamwe pelili, osheshi ame omulumenhu welao peumbo. Nokuli, nefiku ndi li kokule neumbo lange, ovaneumbo lange ove nenwefemo linene mwaame. Ohava ningi nge omuwanhu nokupopya kwavo. Nohandi diladila omu na elaolela moilonga. Noku-hena eumbo lange, oonyuni ngeno owa kala onhele youpongo noyoxuna. Mokukulila kwetu pamwe nomokukalafana, omo meudeko lange nawa kutya, omolwashike hatu ula eulu eumbo letu.”

**Ino dhimbwa omathimbo gomumvongerki. Iituthi ya simana we yi taalela oshipala oto dhiladhila tuu nkene to ke yi dhana, naampoka to ke yi dhanena?**

**Osondaha yEpangulo, kala wa popilwa kuJesus mwene mepangulo. Osondaha yaAdvendi, Omuwa te ya, kala we mu tsakaneka. Osondaha yaKrismesa kala nomwenyo gwa vallelwa Omuhupithi.**

## EVALULO LOUNYUNI

Amerika eshi laninga omuvalu wounyuni aushe okwa ti, okuya pokati kodula 1967 okwa kala ovanhu eemilyona domayovi 3.42

Pavalulo lomudo otaku tiwa kutya, pokati kodula 1966 fiyo 1967 ovanhu ova hapupala neemilyona 65, eshi otashi ti nee kutya, mefiku otaku dalwa ounona 180,000.

Efatululo ola twikila natango tali ti, muEuropa, Amerika, Asia Australië, efiyo ola duka unene omolwoudu womitima. Ndelene moilongo youpyu efiyo otali lafe po omolwoudu wendjadja.

## OMAPENDA GEYITAALO

Omusamane Moses Hipandulwa gumwe maasamane aakuluntu mOkalongo. Okwa li omukristelela. Oonkato dhe okulandula ondjila yeitaalo odhi shi kulandulwa kutse mboka e tu thigile ombuga yuunyuni.

Moses Hipandulwa oye omukristelela, monkalo ye ombwanawa okulandula Omukulili gwe, oye mu fala sigo oompoka sho a hogololwa a ninge omukuluntu gwegongalo mOkalongo.

Omasiku hamale sho Kalunga e mu tula moskola yuuvu omimvo odhindji. Ina vula okugwanitha oshilonga shika, oshoka omasiku gamwe a kala mombete, miipangelo. Moku itaala Omuwa uuwehame, inau mu falafala. Okwa dhama eitaalo mOmuwa, oshoka okwa li onakutula Kalunga.

Moses okwa adhika a longekidha nale egumbo lye oshoka sho a kala muunkundi ngeyi okuhole oondjimbo oku imbila Kalunga. Aluhe a lala mombete ye oto uvu ta imbi ta ti: "Ongaye te tanga Jesus." Osho wo omaimbilo galwe.

Uuvu owa geye noonkondo, nokwa falwa koshipangelo mOnakayale sigo okOshakati hoka a hulithile oondjenda dhe muuyuni mbuka womakemo, 9/9/68.

Omusamane Kleopas Dumeni: Otatu ku pandula, otse ookuume kanakusa sho wa thindikile omudhimba gwanakusa sigo okOkalongo.

Pombila ye omuselekadhi kuku Monika Evula nookuume ke oye ndji ya thikama, okulandula oshinkoti sheitaalo lya Moses.

Omusita Tomas Tuutaleni a hokololele aantu kutya: Moses okwa li ependa, omunashili moohapu, miilonga nomeitaalo.

Ookuume mwa li pombila ya Moses: Omuwa ne mu pe eitaalo okulandula ondjila ongaMoses: Eso lya sindwa kuKristus. A. Haihambo

## KEHANGANOTUMO LOVALONGI LOMONGERKI YAELOK

### OVALONGI OVAFIMANEKWA,

Eendjovo dOmukulili wetu Jesus Kristus tadi tu dimbulukifa alushe moshisho shetu shokutwaalela ovanhu aveshe ekwafo olo tave li pumbwa.

Twe shi didilika nehafo kutya, nanye, ovalongi vomuElok, mwa hala yo okulonga pamwe nongerki aishe moshisho eshi. Mokusota ehanganoleni molwoshilongatumo mwa hala okuhambelela Kalunga molwa exupifo olo mwe li pewa. Omwene Kalunga ne mu punike moshilonga eshi shinene!

Ohatu mu shangele paife nokumuhokololela omhumbwe imwe inene oyo tu li nayo moshilonga shetumo. Omhumbwe ei oi li mEtunda, mepya letumo moshitaingerki shomOuninginino.

Etunda omukunda mouninginino womOukolonghadi, eemaila 40 lwaapo kouninginino waNakayale. Omukunda ou u li pokati kOmindamba nEpaya. Oku na eemaila 10 okudja kEtunda fiyo komikunda odo. Oshilonga shetumo mEtunda tashi yakula ovanhu aveshe okudja kOmindamba fiyo kEtoto, okOnhaululi yopokati kOwambo noKaokoveld (eemaila 40 kouninginino wEtunda). Ovanhu vomEtunda ovo Ovadimba noVandongona. Momikunda dopoushiinda omu na yo ovatembukili va dja momikunda dOvawambo, unene mOukolonghadi. Oshilonga shetumo sha longwa efimbo lile nokuli nde ofikola ya totwa nomulongi Soini Nuuyoma ta longo. Omuyevangeli Samuel Mateus pamwe novakwafi vaye tate Andreas Kaekwapo nameme Kristofina Mikael, tava diinine moshilonga shokutwaalela ovapaani evangeli nokufila oshisho ovakriste. Omwaaalu wovakriste u fike 145, ndelene va halakana momikunda di lili nadi lili, vamwe ve li kokule nEtunda nokuli.

Oshilonga shetumo sha hepa unene molwoukokule womikunda. Ofikolanda nande oya longa eedula 10 lwaapo inai huma komesho. Oshinima shimwe sha keelela ehumokomesho osho eendjila dile. Ounona vanini itava dulu okweenda eemaila di dule 10 ile 20 mefiku keshe. Omuvalu wounona ve li mofikola inau wana omulongi omutivali opo a pewe epitikilo lokulonga mEtunda. Eehenifokomesho lofikola tali pula chapupalo lovalongwa. Ovukulunhu vounona va kundafana momudo wa dja ko nde va tokola kutya, otava tumu ounona vavo opo ofikola i mone omhito yokuhuma komesho nounona yo va pewe elongo olo tave li pumbwa. Ounona vamwe va mona omhito okukala momaumbo a Samuel Mateus naAndreas Kaekwapo. Ndele pexulilo lomudo 1967 ounona 17 va monika nde inava mona omhito okukala aveshe momaumbo. Molwaashi, twa pewa ediladilo lakoshuis, ounona oukadona va tulwa va nangale mongulu yofikola noumatyona monduda imwe i li popepi nofikola moluumbo lofikola. Osho ngaha okoshuis ya hovela, nande twa li katu na sha molwakoshuis oyo.

Pehovelo lofikola neudo ounona va hapupala ve fike 42 ovo ve li mukoshuis. Novalongwa aveshe mofikola ve fike 103. Otwa li tu na okupewa ovalongi vape. Ovo va pita museminari inava monika, ndele twa pewa Paulus Mikael, omudalelwa mo mEtunda, a pita std VI, ou a hovela okukwafa moulongi. Omukadona Aune Omagano Efraim a pita std. VI, okwa hovela okukwafa yo moulongi. Osho ngaha otu na paife vatatu ve li moulongi mEtunda. Oku na natango meme Martta Shooya ou ta longo oshikunino. Osho ngaha Kalunga okwa li te tu endifa moshinima eshi. Ohatu mu hambelele molwa ionima ei inene. Nounona vomukoshuis tava hapupala kanini na kanini.

Otu na omhumbwe inene mEtunda. Katu na sha shi li mobegroting molwoikulya younona neemhumbwe davo dikwao. Eemhumbwe edi oda twaalelwa Epangelongerki. NEpangelongerki ola tokola kutya, mobegroting yomudo 1969 otamu tulwa R 1600 molwomatungo okoshuis. Noimaliwa ei otai indilwa i dje kumemengerki kuSoomi. Ndelene osho tashi pumbiwa mukoshuis i monike mOwambo. Epangelongerki la eta ediladilo eli kutya, Ehanganotumo lovalongi li indilwe li tambule oshisho eshi shokuhumbata eemhumbwe dokoshuis mEtunda. Emhumbwe edi di li unene molwoikulya younona noilongifo aishe tai pumbiwa mukoshuis nomakumbafa ounona nosho tuu. Otwa faneka omhumbwe ei i fike peR1300 momudo keshe. Unene meedula edi dopehovelu eemhumbwe odinene.

Etsikilo kep. 6

## OVALONGI KUNDAFANENI

Natango otu na okushiiva kutya, ounona tava ka hapupala eengulu dakoshuis eshi da pwa okutungwa. Ovo ve li paife ve fike pe 100 ve li mukoshuis. Otu na eteelelo olo kutya, ovalongi ovo va pita oseminaari tava monika mEtunda pehovelolo lomudo 1969.

Ohatu mu etele omhumbwe ei inene i nondilo paife molwounona ve li mouninginino womOukolonghadi. Nde hatu mu indile mu diladile nde mu faneke ngenge tamu dulu okutambula oshisho shi fike opo. Nde ngenge itamu dulu okutambula oshisho ashishe, ohatu mu indile mu faneke eenghono deni tadi wana fiyo peni, opo tu shiive okukonga ekwafo pamwe pelili ngenge osho tamu shi diladila tamu shi dulu inashi wana. Ohatu mu indile mu tumine Epangelongerki longerki yetu enyamukulo leni. Osho yo ohatu shi indile kutya, ashishe osho tashi monika shi tuminwe oshikefa shetumo shomushitayingerki shomOuninginino, opo oini ma aishe i ende pashikulafano ngashi i na okweenda.

Apa pexujilo ohatu dulu okuwedela vali kutya, otu na ehafo limwe oletweni atusheni. Otwa pewa muSeptemba nokuli omufita tate Hofni Nakamhela nomukulukadi waye, omuhakuli Aini Nakamhela, o ve li kEtunda. Osho ngaha yo oshilonga shetumo tashi kolekwa mOuninginino.

Omwene Jesus ta popi ta ti: "Ayihe mbyoka mwe yi ningile ogumwe gwaambaka aamwatete aashushuka, ongame mwe yi ningile" Mateus 25: 40.

mEngela eti-4 laSeptemba 1968  
Nombilikundilo

Weni

Jason Amakutuwa

Toivo Pentikäinen

Aalongi aaholike,

Omukulu gwonale ota ti: "Sha kalelela sha nika edhilo." Oshinima shika oshi na eulumo, onke ano, onawa ngele aalongi yomegongalo limwe taa gongala ya ninge okagongi ya kundathane oshinima shi, naa tume ihe eyamukulo limwe alike kEpangelongerki. Omayamukulo naga thike kEpangelongerki manga Novemba inaagu sa.

Namuhuja

Aalongwa yoskola  
yaMindamba oyo  
taa iindjipala esiku  
kehe. Mefano otaa  
monika ye li nawa  
momukweyo yu u-  
uka mongulu ya ka  
nongekwe Jesus  
gwawo. "Ongoka  
ta tekula kamwe  
kaambuka uushuu-  
shuka ongame mwe-  
ne e shi ningile."



## AFRIKA TALI SHUNA KIIMENKA

"Otwa tseya omahindo gasatana, otatu ga dhimbulula apehe mokati ketu, miiningwanima yuuyuni nomoshilongo shetu," osho omukulukadhi R. Potgieter a ti ongomunashipundi shehanganotumo lyaakulukadhi.

Oshigongi shaakulukadhi osha gongalele omasiku ngaka mOvenduka, Suidwes, moka omukulukadhi Potgieter okwa popi nokulondodha kutya: Afrika oli na iipotha nolya kanitha ombili: Aantu otaa shuna komikalo dhoshipagani, otaa galikana aathithi, aayanekeli naakuluntu yiilongo mboka taa talwa onga-Messias. Naashihe shika osho naana tashi kondjitha Kalunga nohilongo she."

Omunashipundi Potgieter okwa tsikile natango ta ti: "Okwaanambili niipotha muuyuni auhe nomuAfrika nokweetha Kalunga nOngerki, shino otashi tula Ongerki nooyitaali momadhiladhilo. Ihe oshidhiladhilwa nashi gandje wo ehwamo lyiilonga mbyoka yi na okulongwa. Nokwa hulitha ngeyi kutya. "Oshi na oshilonga ano kutya: aakulukadhi ayehe mOngerki yi itule melongelokumwe lya gwana.

## OMUKANKA GWOMEYA GAKUNENE GWA KUNDA- THANWA NATANGO

Osipana yimwe yoondohotola dhiilonga muSuid-Afrika nodhomuAngola odha gongala omasiku ngaka muLissabon Portugal okukundathana kombinga yiilonga yomukankanga ngoka gwa za komulonga gwaKunene okufala omeya mOwambo ayihe. Oshifo "Die Suidwester" sheti-7 Oktoba osha ti kutya: Shampa tu euvathano ndika olya ningwa nuule wethimbo lyiilonga wa tseyika, ombapila dhomauvathano otadhi ka tuminwa ooministeli dhiitopolwa yomeya dhomiilongo mbika iyali opo dhi shayinwe.

Opwa dhiladhilwa wo pegwo lyomeya lyaRuakana pu longithwe onkondo dholusheno ndhoka tadhi ka yakula Owambo ayihe nUshimba.

Iilonga mbika ayihe ngele ya pu, opwa tengenekwa yi ka pule ooranda dhoomilyona omilongo hamano. (R60.mil.)

## A PEWA ODJAPO MELIHONGO LEEVILI

Oshimbundu David Kadiva omukunda Edama Ohalushu okwa mona odjapo yaye (Diploma Qualification Corresspondence.)

Elihongo eli okwe li tameka 1950 kwaAngola. 1960 omo a kongana tango ofikola muPretoria, fiyo neudo a konakonwa 14.10.68, nokupewa ondobwedi yaye Diploma Qualification.

Onawa unene eshi exumo komesho, tu na nena omuvateli. Yaloo, Kalunga ha yandje shili, kwaava tave mu i ndile moshili.

## OITA POTAVI

Olwoodi lwokukondjifa epeya ola kondja neenghono omafiku oivike ei ya dja ko. Momundingonoko aushewOtavi. Ehepu otali ti kutya, eshi omhepo yokoushilombuwanhu ya hovela okupepa neenghono, ovakondjifi ina velitwifa ko vali, nomundilo owa hovela okutandavela kokule. Opa tengenekwa kutya, oshinano shehekitali 15,000 (tashi ti oule weemaila omilongo mbali lwaa po) ashishe osha xwama, novanafaalama vopomudingililo oopaife otava xupu noundjuu.

Ovakwaita 145 ova ifanwa kOmbaye okupopila moshiponga eshi, nokonima okwa kundana kutya, ovadengi aveshe vomundilo ovo va li ve na eenghono natango, inava loloka, ovamonika tava yofa ombelela pofaalama imwe nokuhafela efindano eli.

## OSHITUKI

Omasiku ngaka Amerika okwa tuma aalumentu yatatu mombepo noshituki shedhina "Apollo 7." Edhingo-loko ndika lyomombepo olya ninga omasiku omulongo nesiku limwe opo oshituki shika osha galukile ishewe kevi.

Olweendo nduka olwa gandja einkelelo kwaAmerika kutya, nani osha fa tashi vulika omumvo tagu ya Amerika a ka gwile komwedhi.

Iifo yoonkundana otayi ti, aayendimbepo mbaka yatatu otaa iikalekelwa manga iiwike yimwe opo ya konakonwe pamwe oye etelele ko uulipi (oona) wokomwedhi wo waa taandelithe omikithi mokati kaantu. Pahistori omikithi dhokuyuni ulwe ohadhi pula ethimbo ele manga inaadhi monikila omi ndhoka tadhi vulu oku dhi kondjitha.

## ELONGO LYAYAHAMANO

MuEngland, moshilando Birmingham, omukulukadhi Sheila Ann Thorns a vala elongo lyuunona uhamano moshipangelo Maternity.

Uukadhona une nuumati uyali owa valwa auhe u nomwenyo manga kwa li ku na natango oomwedhi mbali, opo u valwe andola. Utano ou nomwenyo natango.

Pakuhokololwa elongo lyayahamano oko li li muuyuni li nomwenyo ngashi muJoegoslavia, Amerika, Mexiko nomuNicaragua. Ihe mweEngland oshiningwanima shika osho shotango.

Omukulukadhi Sheila Thorns gwoomvula 30 otaku ti, oku li nawa notaa nyanyukilwa omagano goluvalo lwawo pawe nomusamane gwe Norman Barry gwoomvula 33, ndoka ye lu tegelele uule woomvula omulongo mondjokana yawo.

## NGENGE OMHATA ILA U TALE

Oilando ei Oshakati nOndangwa otushi oku i yeleka naSamaria omo Jesus kwa li e hole okupitila mo ngenge ta i kuGalilea eshi tadi kuJerusalem. Ndele Ovayuuda kakwa li hava ende mo, osheshi osho oshilando shi tondifa. Osho yo eenhele edi mbali di li.

Vahapu ova xupula vaekelela, ohava ti ashike: Heeno, vati oko ve li keeShakati oko. Oku keeshakati Jesus ihe shi ende pomunghulo. Oku otu li ko yo ngo tu na elongelokalunga, olwiimbo oyoongalele yovanyasha nosho tu.

Itai kufa pefenga, ngenge omhata ila u tale. Johannes Ndemuweda

## NGAKA OMADHINA GIILYO YEPANGELO EPE MOSHI- LONGO KEHE

### ONGANDJERA

1. Kaptein Ushona Shiimi
2. Sen. Hoofman Johannes Ankonga
3. Sen. Hoofman Titus Mbango
4. Mnr. Simeon Matias
5. Mnr. Martin Iyambo
6. Senior Indongo Shigwedha

### UUKWANYAMA

1. Sen. Hoofman Vilho Ueyulu
2. Sen. Hoofman Johannes Shekudja
3. Sen. Hoofman Filippus Kaluvi
4. Sen. Hoofman Gabriel Kautuima
5. Sen. Hoofman Ualombola Kalomho
6. Pastor Kornelius Ndjoba

### OMBALANTU

1. Sen. Hoofman Kaimbi Mundjele
2. Sen. Hoofman Lisias Aluuma
3. Sen. Hoofman Isak Haimwata
4. Mnr. Petrus Neumbo
5. Mnr. David Sheehama
6. Pastor Titus Heita

### ONDONGA

1. Kaptein Paulus Elifas
2. Sen. Hoofman Angula Shilongo
3. Sen. Hoofman Paulus Itamalo
4. Sen. Karel Israel
5. Pastor Juuso Shikongo
6. Mnr. Johannes Mbokoma

### UUNKOLONKADHI-EUNDA.

1. Willipard Kanyele
2. Daniel Shoya
3. Absalom Paulus
4. Jesaja Paavo
5. Lisias Ashimbanga
6. Israel Nakamwe.

### UUKWALUUDHI

1. Kaptein Josia Shikongo Taapopi
2. Hoofman Lukas Shiikwa
3. Hoofman Ananias Sheya
4. Mnr. Ananias Kamanya
5. Mnr. Silvanus Shitumbi
6. Eerw. Gabriel Amupolo

### UKWAMBI

1. Sen. Hoofman Fikameni S. Iipumbu
2. Sen. Hoofman Willipard Shitatala
3. Mnr. Leonard Mukwiilongo
4. Mnr. Gideon Mutota
5. Mnr. Jason Ambole
6. Mnr. Timoteus Kasamane

Owe tu lapa nowe tu kwatele mo, mungoye Owambo twaa na we eku-thwomo ongoka te ku dhimbwa ongoye Owambo shila otatu ti kee shi Omuwambo.

**OMADHILADHILO GOTANGO  
ALUHE OGO GOMONDJILA**

Omusamane Ruben nomukulukadhi gwe Fiina oya kala nomwanamati edhina lye Silas. Silas onkene ata meke Uushimba ine ya we kegumbo kOwambo, nenge a nyolele ko wo tuu, opo a tale he nayina naamwayina nkene ye li po.

Nando pwa pita oomvula odhindi he nayina oya kala nokupupapupa omwana mpo a gama nonkee e li po. Olwindji oya kundana kutya, Silas onkalelo ye kayi shi we yOshiwambo. Ihe shika inashi ya zimbula momagalikano. Nomuna gwomagalikano iha kana. Ndjika oyo ombilive yotango yaSilas kuhe. Tate omuholike,

Ote nyanyukilwa oku ku nyolela ombilive ndjika, opo ndi ku tseyithile okukalamwenyo kwandje. Ngashi wa tseya omimvo ndatu odhi ipitile inaandi mu nyolela. Onda kala nekondjo enene meni lyandje. Ombili yashili inandi yi mona nando. Onde yi kongo muuhumba woongalo, moondanisa nomookino, ihe ayihe owalelela.

Tate omuholike, owa li we tu longo kutya, Jesus oye omugandji gwombili noye awike kuumelela ketu. Okuza muunona wandje inandi nongela unene uukuume mbuka.

Ookuume nda kala ndi ya na inaa vula okupa ndje ombili ndjika nde yi taamba ngashingeyi. Na ite vulu we okutsikila pamwe nayo miinima ayihe ngashi shito, oshoka otashi nyateke eiuvo lyandje. Otandi dhimbulukwa naanaa natango manga nda li po omushona, sho we tu kumagidha aluhe tu leshe Ombimbeli.

Onda li he dhiladhila kutya, kanda li nethimbo oku shi ninga, nokombinga yimwe onda li nde shi tala emanepo lyethimbo. Ngele te kambadhala okulesha, ookuume kandje oya sheke ndje nokutala ndje nayi. Nangele nda lesa owala mendelelo, mpoka ine vula okukwata mo nando edhiladhilo lyasha.

Ngashingeyi tate gwandje, omadhiladhilo gOmbimbeli kungame oge vulile ndje uutoye woonyushi. Ngiika oto yuulukwa okutseya shono sha ningwa po. Eeno, onda hala oku shi ninga ngele Kalunga ta pitika tu monathane natango. Ihe manga inaatu monathana ote hokolola ashihe pafupi.

Opa li ongudu inene ya li tai lekele, notwa li twa kumwa noluhodi linene eshi hatu tale oshikefa omo kaume kaaveshe a nangala.

Ohaluka handi lombwelwa: Salomo a dipawa. Onda pula olye e mu dipaa? Walye, keshiivike fiyo nena eli. Eshi osha ningilwe 28.9.68.

Tate Salomo Kapiya a etela ovanhu oluhodi linene moku mu diladila, osheshi oye a li ependa nomunambili efimbo alishe. Ka li omunwi ile omweendaendi. Alushe okwa kala meumbo nokuwanifa oilonga yaye. Oku hole ouwa nomashendjo, noukriste.

Osheshi Salomo Andreas Kapiya a longa efimbo lile mOkomboni yaTsumeb Corporation, muWalvisbaai, nomukulunhu wokomboni ei okudja nale nokuyakula ovanhu. Ava hava longo moilonga yOkomboni ei ova ninga ongalo ei ya wa R84.00 ongekwafo neyakulo moilonga yepako. Oshivilo shelekelafano nanakufya osha ningilwa poshivelo shongerki opo aveshe veile okutala.

Omufitaongalo wetu omufimane.

Osha li etango lyombandamutse sho nde ya moshipondoka shetu okufudha po omeetaha. Mokulala kombete yandje, onda kutha okafo mwa shangwa ngeyi:

“Oshoka natse wo twa kala nale twaa noondunge tse inatu vulika. Twa li twa puka notwa li aapika yuuhalu wopendji noyuudhano wonyama wokukala muuwinayi nomefupa... Ihe ohole nohenda yaKalunga Omukulili gwetu sho ya holoka, oye e tu hupitha, hamolwiilonga yuuyuki twe yi longo ando, aawe, opasilohenda lye nokeshitululo lyOmbepo Ondjapuki” Tit.3:3-5.

Okuza mpoka inandi etha okudhiladhila oshinima shika shesilohenda lyomuJesus nkene tashi ti kungame. Ngashingeyi ayihe oya yela. Ihe tate omuholike, ondi shi shi sigo ompoka oku na oyendji kaye na ko nasha nomadhiladhilo gomOmbimbeli komukalo gwontumba nenge gwongandi. Inandi hala okwaalula nando olye, moshinima shika. Ihe ondi shi shi, ngele owa hala okunyola oto kutha tango opena. Osho shi li wo, ngoka a hala okukalamwenyo kwa gwana kwa pwa, e na okukutha Ombimbeli noku yi konakona.

Shika osho owino yandje yongashingeyi.

*Omumwoye, Silas*

kwa Metusalem Shilongo a lesa omatumbulo amwe oo e tu twa omukumo nelombwelo opo tu lungame. Ovadipai ove li mufye. “Ofye katu na eenghono okuninga sha. Eenghono detu odi li kwaau wopombanda” osho tate Tuhafeni Kapiya a tya kookaume vanakufya ava va ongalela oshikefa shomudimba.

Efyo lanakufya Kapiya tali tu dimbulukifa shili kutya, katu na apa eumbo tali kalelele. Ombila yatate Salom otai kala mOwambo omo a dalelwa. Tate Kalunga na tambule omumati waye meumbo laye meulu. Ye na hekeleke meme Elvi Kapiya neefiye davo ne di mweneke.

Ovaholike, tu dimbulukweni mo-maindilo eni nye mu indilile ovo tava hovele okulonga oilonga yomadipaafano. Uunene tu indilileni ofye Ovawalvisbaai tu efe oukolokoshi, fye tu dimbulukwe kutya kape na omudipai e na omwenyo waalushe. Ovadipai nye, dimbulukweni efiku tamu di mounyuni omu epangulo leni otali ka kala la tya ngahelipi?

*F.D. Lilongeni*

**“EGUMBO LYAA NA ELUGO,”  
LYA HOLOKA MOSTORA  
YOMAMBO MONIIPA**

**OMUKWETU**

Oshifo shOngerki onkwaevangeli paLuther yomOwambokavango

Die Tydskrif van die Evangeliese

Lutherse Ovambokavangokerk

Oha zi mOniipa.

Omukuluntu gwoshifo/ Hoofredakteur omumbisofi

Dr. Leonard Auala,

Amushanga/ redakteur S. Ekandjo

Ondando komumvo mOwambo 70c

kUushimba nOkavango 90c

Kombanda yomafuta R1.30.

Oondando nomambestelo naga tumwe kOmukwetu,

Oniipa, Pk. Ondangwa, S. W. A.

Oshinyolwa shuule			
wondeimi 1	otashi futilwa		R1.00
oondeimi 2	—” —”		R1.90
oondeimi 3	—” —”		R2.70
oondeimi 4	—” —”		R3.40
oondeimi 5	—” —”		R5.00

Oto vulu okutuma efano lyaashoka wa hala shi tseyithwe nomatumbulo wo gasha ngele ope na.

**Finnish Mission Press  
Oniipa P. O. Ondangwa**