



OMUKWETU

Oshifo shOngerki onkwaevangeli paLuther yomOwambokavango/Die Tydskrif van die Evangeliese Lutherse Ovambokavango Kerk

No. 18

SEPTEMBER

1967

LALAKANENA OKUTHIKA MEGUMBO LYOMEGULU

Mat. 13: 44-46

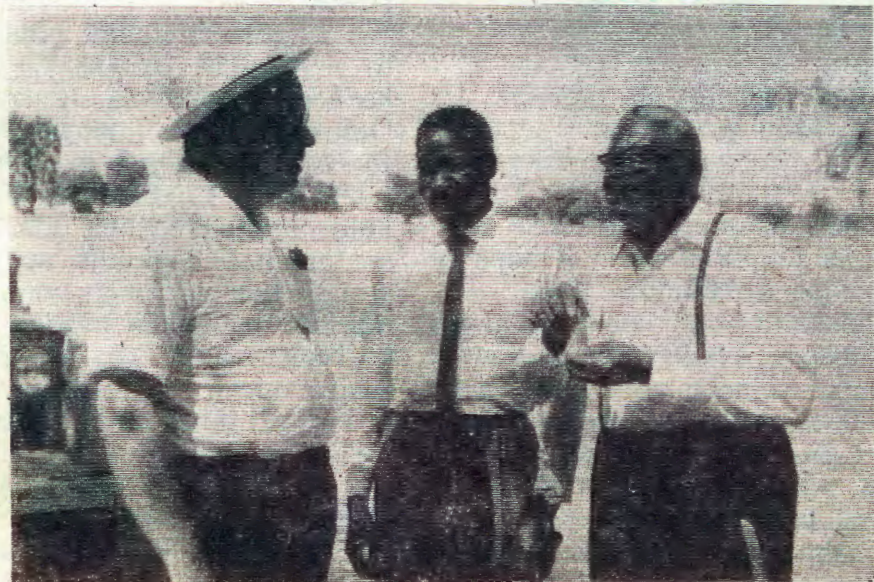
Muuyuni mu nomaliko gondilo ogendji. Omuntu gwonena ota lalakanene omaliko ngoka. Omolwokukonga omaliko ngaka aantu yuuyuni otaa kondjo, taa tidhathana, taa dhipagathana, taa yugu, taa kotokele, taa dhini ukriste, ihe omo oomwenyo dhawo dha yi kokule nuuyelee washili. Ihe eso tali kutha mbala omuntu meihepeko ndika nota thikama koshipala shomupanguli. Meliko lyuuyuni omu niiponga.

Oshilongo shegulu osho elikoliko lyashili. Kaku nomuntu ta vulu oku shi landa nuuyamba mbuka wokevi. Itamu yi ngoka inaa valululwa. Oshilongo shegulu oshi li mokati ketu. Osho oohapu dhevaangeli. Osho Jesus mwene. Ngoka e mu taamba shili nomwenyo aguhe, ota thiki muukwaaluhe.

Omuntu ando ta etha iihulipo yo-kevi, a likole tango Jesus medhimopo lyoondjo, ando ta kala neliko lyoshili. Olyo oshaaluwata nolyo okawe. Omuntu e noku ka konga, e nokwiilandela, ihe nomethimbo ndika omeho getu ga tsikithwa kuKalunga kuuyuni mbuka. Ndishi aantu ya simaneka okawe(diamante). MuSuidwes oonkundana dhokawe odha indjipala. Omuntu e nokulandithapo eliko lye olindji, opo i ilandele okawe, oshoka okwi itaala kutya, okawe oke nongushu yi vule yeliko lye. Ihe nonando okawe kokevi oke nongushu onene, onkene wo otaka falitha omuntu mondholongo. Tashi ti eliko lyuuyuni kali shi okuyelekwa neliko lyoshilongo shegulu. Kalunga oye mwene gwaashihe nomaliko wo guuyuni. Ano ngele to hala elikoliko, landithapo eliko lye oke nokutya, u hempulule oondjo adhihe, eto kala medhimopo lyoondjo wu adhe ukwawhilongo wegulu, eliko wo ndika lyopalutu, li kale ashike omboloto yokwiikwatha mondjila, u tye ngaPaulus: Ayihe mbika ya li eliko lyandje, onde yi tala oyo iiyagaya niiponga yowala, ihe nda hala ndi likole Kristus nguka eliko lyoshili.

Ihe omuntu ita vulu okulanda eliko lyegulu, ote li mono omagano. Shampa omeho ge taga taalele omugwanithi gweitaalo. Omuntu shampa te ya ngaashi ti ithanwa: Ileni kungame amuhe hamu longo nomwa loloka. Ileni mu lande oshingoli omagano, ileni nkuka komeya. Ngoka te ya kungame itandi mu ekelehi. Ila kugumbo za ko kiilongo, osho tatu ithanwa kuJesus. Onawa eho lyandje nolyoye lyeitaalo li tale kethikilo. Twaafundjalekwe kuuyuni. Twaanuke omuhuya, tu ka lyate eyoka. Tu mone notu uve eithano lyaJesus momaithano ngaka ogendji guuyuni. Tu lande kuYe omugwayo, tu gwayeke omeho getu, tu kale twa tala openi pe nepukitho nopeni pe nondjila ondjelele. Egalikano lyetu li kale: Omuwa Jesus, tonatitha omeho gandje, ndi ku konge nondi ku dhame ngoye ngu oshaaluwatalela mokukalamwenyo kwandje akuhe.

L.M.Sh.



Mefano ndika omusamane Koponen 'ta kundathana nomumbisofi L. Auala nomusita Josia Mufeti

EWI

LYEVANGELI

MORADIO

Otundi 8.30 ongulohi

Omota 31

15.10.67 Elia Haipinge

kOlupandu naGerson Max.

22.10.67 Evangelis Simon Namunyekwa





Hamushanga ta pendula ehalo lovashangi

Ovamwameme nye mOwambokavango, nda hala oku mu lombwela kutya: "Efimbo paife ole uya, eendaka dovanyoli ovalaule di udike." Ohandi ku ingidile vali ngaha: "Edu eli noshilongo shetu ola pumbwa ovashangi ovalaule, ovo tava dulu okushangela ovanhu voshiwana shavo monghedi yavo vene yeudeko lavo. Ovanhu ova hala okuuda osho sha li ko nale, osho tashi ningwa paife noshokomesho. Ovanhu tava pumbwa okulongwa okupukululwa, okulondwelwa osho nosho. Otava pumbwa omambo, oifo nomalongo."

Ngenge ove omuudifi, shiiva tete nawa omaudjuu nomaupyakadi, omaluhepo noisho nokukala kwaavo to udifile, opo u va kwafe ekwafo tave li tambula. Tu longwe pafimbo lonena nopandunge neudeko lomunhu pefimbo eli.

1 Omumbisofi a kundu omusamane Matti Koponen nokwa pandula ehalo lyAasoomi lyokukwatha ongerki yetu.

2 Omusamane Koponen a etele Epangelongerki omakundo ga zi kookuume muSoomi, ngaashi wo kehanganotumo lyaanangeshefa muSoomi. Okwa hollola, nkene ehanganotumo lyaanangeshefa muSoomi li nehalo okukwatha Ongerki yetu moshilonga sheuvitho lyevangeli shoka tashi longwa komusamane Efraim Angula.

3 Epangelongerki lya lesa nolya taamba eindilo lyaamwameme mboka ye li muPretoria ya tegelela epangulo taa indile koongerki dhomuSuidwes ya galikanenwe.

OWA SHIIVA TUU ONDILO YOFIKOLA

Efyo, elukilo noukwapata, oinima ei oyo ngo unene hai tukula omadimo pokati.

Omushamane ile omukulukadi nge a fi, umwe ota kufa po okaana va ti ombushe, ile okwe ka fikamena. Umwe va ti owedimo olo. Nosho ngaha ounona tava halakana.

Omunhu ne oo a ya nokaana oko okwe ke ka ninga okapika kaye. Nge omukulukadi okwa mangeluka

ne moilonga yomeumbo nomushamane oshoyo. Otava i nee ngo keekamba davo vamangeluka, kave na vali oshisho shasha.

Akutu! Okaana okamangwa noilonga yomeumbo, kake nefimbo okuya kofikola. Okulesha kake shii, ongo be yongaho. Oka fa nee ngo Kashipeli winya ine li longa sha. Jesus ta ti: Efeni ounona ve uye kwaame inamu va keelela ko Luk. 18:16-17.

Ounona ovo tave ya okuninga oovene voshilongo. Oshike hano ito tumu okaana kovanhu oko ile koye mwene mofikola manga kuye. Eshi ashike we ka ninga okapika ngaho. Hola omukweni ngaave mwene Mark. 21:31. Ondi udite unene oluhodi shili. Nge osho tashi kala ngaha, ino kufa po vali nande okaana ile okafiye oko u ka ninge okapika koye, ove ito ka tumu kofikola. Nomomaumbo ovanhuunhuu omo tamu ningwa ngaha. Momaumbo ovanhu va longwa. Natu tonatelafaneni ngo, Luk. 17:1-3, opo tuha pukife oudi vOmwene.

Nge ino koneka ondilo yofikola osho to ningi nope he na onghenda yasha.

Li tula moilonga yomeumbo nde to mangelula okaana ka ye kofikola ka longwe okuhola Jesus Omuholike Omukulili wako manga ke nefimbo. Ile ove wa shiiva eyo lOmwene. Eimbilo 502. Tatekulu omuholike, meekulu omuholike, tate omuholike, mememe omuholike okudja nena onda hala u li tule moilonga yomeumbo loye nde to mangelula okaana oko ka ye kofikola manga kuye. Ino li ninga ashike omwii woekamba ngaho. Va ti ombedi ohai ningi naukelo. To ke shi mona shito.

Mangelula okaana ka ye kofikola manga kuye. Mangelula, ka mangelula, ka mangelula, ka mangelula, ka mangelula nena. Ehololo 3:22.

OVADIAKONI VE TU TALELEPO



Oniipa, Onandjokwe nOshigambo oya talelwapo kongudu yovadiakoni ovalumunhu vomEngela. Ongudu ya li ovalongwa 14 (umwe Omukavango a kala keumbo) novalongi vavatu.

Moshinyanyangido va popifa ovalongi vamo. Omudiakoni Paulus Isak, a popya medina longudu. Epopifo la li okutwaafana omukumo moilonga nomondjila yokufika meulu.

Va ninga ohungi mOshigambo nOnandjokwe, omo va fatulula oshi-

longa nelalakano loudiakoni. Oshondaha va popifa eongalo lOniipa nokulongafana nokukumaidafana.

Elalakano olo unene okukwafa ovanaluhepo, onghe ovadiakoni ve noshilonga shinene osho tashi va teelee, osheshi ovakwanaluhepo ovahapu unene. Osho omukriste keshe oye omudiakoni pohaulwaye, e nokukwafa ovakwanaluhepo ponghulo yaye nokinga osho te shi dulu. Ita teelee ondjambi, ndele ta yakula omukwao, osheshi a xwamekwa kohole nge a makela Jesus oye omutoye.

OMULIHONGI, OWA SHIIVA TU S.C.A.?

— "Students' Christian Association" olo ehanganano lovalihongi Ovakriste. Otali monika keembinga neembinga adishe dounyuni, mominghoko nominghoko, momalaka elili nokulili nomoipa yomaluvula aeshe.

KuSuid-Afrika, Ehangano eli ole uya ko 1896, eshi hamushanga wa S. C.A. mounyuni aushe, omushamane L.D.Wishard, a dja kuAmerika, a talelapo Suid-Afrika. Oko va shakena nependaitavelo limwe la dja kuEngland, omushamane Dr. Donald Fraser, aveshe ve nelalakano limwe lokutandavelifa ehanganano eli mokati kovalihongi medu eli. Onghe va talelapo eefikola keembinga neembinga dedu nokuninga oyoongalele novalihongi. Osho ngaha mekondjo nomeilikano omukangha wo S.C.A. wa dikwa mu S.A.

Mekwatafano eli, oilonga yomushamane O.B. Bull, oi shi okukonekwa omudo 1907 okwa tandavelifa ehanganano eli mokati kovalihongi ovaladelwamo. Mokupita kwomafimbo nomafimbo pwa holoka vahapu pondje yedu nomeni lalo, ovalaule novatilyane, va fila oshilonga eshi oshisho nomwaalu woonakuya mehanganano wa enda nokutana meefikola doilonga i lili noi lili. (Koneka nawa, nganga taku popiwa eefikola otaku diladilwa: eesekundofikola, eeseminari, eefikola tadi tekulile ovanhu oilonga yoludi keshe neefikola dokombada (High Schools+Universities).

Omudo 1965 oshoongalele shine ne shaS.C.A. sha tokola oilonga yEhangano eli mokati kovalihongi ovalingilisha, ovalaule, eembastela, Ovalindia eembulu, ili fikamene, opo li dule okushakenifa nawa oilalakanenwa yalo. Okudja odula oyo, S.C.A. mokati kovadalelwamo mu S.A. otai ifanwa S.C.M. = Students' Christian Movement. Eengudu dikwao da mona omadina elili ndele oshikalimo nelalakano limwe alike. Elinyengongongahanganano eli tali hapupala alushe pailyo fiyo onena otali pandulwa kovakriste nokovalihongi vahapu ovakriste eshi li li po ngoshilongifo shokuxwameka nokumwenyeka okriste mokati kovalihongi.

Ehangano lovalihongi Ovakriste, S.C.M. muS.A. mokati kovadalelwamo, paimhe la fika ponghatu tai dulu okukala li na oohamushanga valo, ovo tava talelepo eefikola keembinga neembinga omo mu na oitai yehanganano eli okupukulula ovawiliki nokuxwameka oilyo moitai nomoikandjo,

moitukulwa aishe ya S.A. Ovo ove li yo oilyo yEwilikonguudu. Hamushanga umwe wavo shiimba te ke tu talelapo diva mOwambo.

"Fac Jesum Regem" (Latin) = Ninga Jesus Ohamba. Olo elalakano lEhangano lovalihongi ovakriste. Etumbulo eli otali monika kombadidiliko yehanganano eli.

Ehangano olo otali udifa nawa elalakano lehangano. Olo elombwelo koshilyo keshe mEhangano eli kutya, a tule omwenyo waye nokukala kwaye mepangelo laJesus, Ohamba yeehamba. Olo elombwelo okuninga Jesus Ohamba, ha yoshilyo shehangano ashike, ndelene yaavo yo va hala okwekelashi ouhamba waJesus noudalwa wavo puKalunga, nge owina ile mokuhashiiva sha. Paxupi, elalakano lEhangano lovalihongi Ovakriste olo:

- okupameka okukala kwopamhepo kwovalihongi nokuxwameka ehalo lokukonakona omishangwa.
- okweeta nokukaleka omulihongi mekwatafano li nomwenyo nOmukulili waye ye a dame kOngerki yaKristus.
- okutandavelifa ouhamba waKalunga mofikola, movanhu nomounyuni aushe.

MuS.A. Ehangano lovalihongi Ovakriste tali longekidwa ngaha:

1. Oshoongalele shinene: Osho hashi ongala omudo keshe omutine. Oitai-hanganano aishe meefikola adishe domu S.A. omo mwa dikwa ehanganano eli, tai tumineko ovatumwa vayo. Omalongikido aeshe asho, taa humbatwa kOngudufilishisho, omo yo oonakweendaendamushanga ve li oilyo. Elalakano loshoongalele eshi, okuyandja eewino nexwamo mokuwiliika moitai yehanganano nomoikandjo yalo. Oshoongalele shotete shaS.C.M. sha li sha ongala neudo kuNgoya University, Natal. Kusho ongerki yetu nehanganotumo ya tumineko ovatumwa vayo vane.

2. Oshoongalele shoshikandjo shimwe hai ongala pamwe lumwe modula, okuxwameka oilyo moilalakanenwa yehanganano moshikandjo shavo. Eloongekido loshoongalele shoshikandjo otali filwa oshisho kokangudufilishisho koshikandjo.

3. Oshitaihangano: Mofikola keshe omo mu na ovalihongi ve hole Jesus Omukulili wavo, tava dulu okudika okatai mofikola yavo oko taka kala oshilyo mehanganano eli. Okatai katya ngaha, mewiliko lomunashipundi oo a hoololwa koilyo yoshitai nokovakwafeli vaye, ovahongi noilyo i-

kwao, otava humbata oshilonga shEhangano lovalihongi Ovakriste mofikola yavo, mokuninga oyoongalele e-fimbo nefimbo mokati kavu. Oonakweendaendamushanga hava talelepo oitai ei pofikola keshe okuxwameka nokuyandja omayele.

Mokangudufilishisho keshe nge koshoongalele shinene ile oshitaihangano, ngaashi mu na omunashipundi osho mu na okukala hamushanga nomudiinini woiniwe.

Eedjo doiyakulifo (oimaliwa):

1. Omudo keshe oshilyo shehangano otashi teelwa shiyandje 50c ongoiyandjiwa mokukala mehanganano.

2. Oshondaha onhivali yaMai omudo keshe oya ufwa noya yoololwa i kale efiku lelikano lovalihongi mounyuni aushe. Ongalo tai longikidilwa efiku eli hai yandjwa meyakulo loshilonga shEhangano lovalihongi ovakriste.

3. Ovalihongi vamwe nande va fiya po ofikola, eshi ve li moilonga yavo tava dimbuluka natango ehanganano eli nokuli kwafela noimaliwa omudo keshe. Osho tava kala ngaha ookaume kehanganano.

4. Eengerki dimwe da koneka ondilo yoshilonga shehangano ngaashi FELCSA (=Federation of the Evangelical Lutheran Churches in Southern Afrika), omo yo ongerki yetu ELOK i li oshilyo, hadi pameke S.C.M. noimaliwa. Ehangano eli tali eta yo oilyo, yeengerki domaitavelo elili noku lili pamwe, shaashi oli na edimba louekumeni (ecumenicity) osheshi itali tale kutya, ou owongerki ilipi.

Ohatu dulu yo tuu okudika Ehangano lovalihongi ovakriste meefikola detu mOwambo ile moSuidwes aishe?

Eshi nda itavela nondi shi shii meefikola detu mu na yo ovalihongi ve HOLE Jesus nova hala a kale Ohamba yeemwenyo davo nodavakwao nomupangeli wavo moilonga nomomalalakaneno avo aeshe, ondi na omukumo okunyamukula epulo: Heeno, otashi dulika. Okuninga Jesus Ohamba tashi ti okukala mekwatafano na ye, ou e nolukeno okudimapo onyanga yakeshe omunyoni nota yandje eenghono kwaava ve li mekwatafano naye va finde omahongololo a duka okupukifa ovana vaKalunga. Heeno, otashi dulika osheshi ndi shi shii vahapu va itavela owino neh paululo lohamba Salomo: "Etilokalunga olo e fina leendunge neshiivo lokushiiva Omuyapuki, ounongo" (Omay. 9: 10). Oshiwana tashi hepaulula Kalunga kasho, oshi na elao.

A.Kaulinge.

OSHIKOLOLO SHOMEGUMBO

VATANO VATUKUTESE OVA SHASHWA



Kua udikile kutya, omukulukadi umwe muTranskei okwa dala ounona vatano pefimbo limwe. Omukulukadi oye Nogesi Tukutese. Ounona aveshe ove li nawa. Mefano oto va mono va teelela okushashwa. Ina vo naxe va li yo inava shashwa pefimbo olo va pewa oshali eshi. Ovo yo va shashwa efiku tuu olo, hano kumwe vahetatu ovo va shashwa efiku olo.

Ovanhu vahapu va dja keembinga daTranskei naCiskei nde ve uya okutala eshasho efiku lomambo. Eshasho la ningilwa mongerki yaPresbiteriaan yomokalando Duncan. Omufitaongalo G.G. Ndzotyana a ninga eshasho. Okwa tumbula kutya, ovadali vounona ova hafa nde tava hambelele Kalunga molwoshali. Ovanhu ve lifininika novatoolinghundana va topifa omafano. Omuponhele wepangelo laTranskei nomuponhele womushamane Kaizer Mantanzima, ova li yo moshivilo sheshasho. Omadina ounona oo melandulafano ngaashi va dja medimo laina: **Tembekile, Kululekile, Tandekile** (aveshe omati) noukadona vavali **Zoleka naTandeka**.

OSHIGONGIHUNGI SHAANASHILONGA MONIPA

Mehistori lyaanashilonga yOniipa mwa gwedhelwa oshiningwanima oshiwana, oshigongi shuukumwe waanashilonga yOniipa nOnandjokwe sho sha gongala ongulohi yeti - 24/8/67. Aanashilonga ayeheyehe taa longo mepya lyOmuwa, oya hiywa noyendji oye ya koshigongi shawo.

Ilipopiwa yoshigongi oya li:

- 1) Uukumwe waanashilonga tau tungwa ngiini?
- 2) Uuyogoki waanashilonga.
- 3) Omunashilonga oku nokukala ngiini methimbo ndika?

Omusitagongalo a tamekitha oshigongi nohapu yaKalunga. Okwa fatulula edhiladhilo lya pendutha okuhiya oshigongi kutya olyo: Aanashilonga ye nokutsakanena poohapu dhOmuwa ethimbo nethimbo. Ngele ihaa gongala kumwe, ombepo yuukumwe otayi kala po ngiini. Ngele itaa gongala, ope noomposi shila.

Omulongi Sakeus Amunjela okwa popi "uukumwe wanashilonga." A tumbula: Otwa pumbwathaneni, tu kwathathane, tu tsaathane omukumo, tu kale shimwe nomombepo yimwe. Tu kale aakwiita ye li omukalo gumwe, opo twaa shekitha oshilonga shOmuwa.

Omupangi Saima Silvanus a popi "uuyogoki waanashilonga" wokolutu nokomwenyo u nokukondjelwa. Ngele itau kala maanashilonga, eshundu ko otali ya. A tumbula: Omunashilonga na tale oondjenda dhe, iilonga nokukala kwe akuhe, ku kale kwa yogoka. Na dhimwepo oondjo tango meni, opo nokukala kwokombanda taku yele.

Omulongi Leonard Shemuvalula a popi "omunashilonga oku nokukala ngiini methimbo ndika lyonena." Okwa tumbula: Efundja iyuuwinayi lya gwayele Owambo nuuyuni auhe nolyu udhitha apehe omeya galyo. Omunashilonga oku li mokati kiiponga. Omakuthikuthi niikungulu iidhigu yomutondi otayi dhenge ngashingeyi omunashilonga. Oya hala okupukitha nokufala omunashilonga. Omunashilo-

OLWEENDO LWOMUU- YELELE

Ano shino shi ningeni ethimbo ndika sho mu li shi nokutya, otundi ya thikana, mu penduke moomposi. Oshoka ehupitho lyetu li li popepi nate ngashingeyi, li vule lyesiku ndyoka twa tameke okwiitaala. Uusiku wa ti koongulasha nomutenya gu li popepi. Tu ihuleni ano iilonga yomilema, tse tu homateni omahwahwa guyelele.

Omukwetu, onguyo yomilema oto yi ihula ngiini? Ongele wa taamba Omuwa Jesus Kristus.

Tu endeni ano pamikalo onga-shika omutenya, hamuufukedhi wiituthi nomuunkolwi, hamomahondelo nomiihulo hamoontamanana nomomapuko. Aawe, taleni Omuwa Jesus Kristus, nonyama yeni inamu yi yakulila okahalu.

Julius Aludhilu.

EKWATHO TALI ZI KOMUWA

Onda li nokanonamati koomvula mbali ka alukwa oomwedhi ntano mOnandjokwe. Omayakulo oga li po oge ndji uusiku nomutenya, omiti noowenda. Okanona ka mwena thilu nonda dhiladhila oke nokuhulitha.

Ohaluka okanona ka tameke okukala nawa kashona nakashona nosigo onena oke li nawa. Edhiladhilo lyandje nani olya li lyandje mwene. Omunona nena oku lilela nawa. Jesus na tangwe.

Ndi tile ndi kakame, shike andola. Ekwatho nohole ye, ngay' nde yi lola, ngay' nde yi lola.

M.Sakaria.

nga na kotoke. Na tungile shili ongululu ye kemanya Jesus. Omidhi dheitaalo lye dhi dhame muule mwi. Na kale aluhe metindi Kristus. Adam omukulu muye na dhipagwe omasiku agehe nethimbo kehe nopeha pa penduke Adam omupe ta kala nota longo muuyuki nomuuyapuki.

Omwevangeliste Malakia Amuthenu a kwatele omadhiladhilo kumwe. Manga inaa hulitha negalikano, oshigongi sha faneke shi gongale natango omathimbo nomathimbo. Ombepo yokukala kumwe nokutameka iilonga yuukumwe wawo oya hololwa. Ehangano lyaanashilonga lya popiwa. Otwa huhulukwa nawa koomwenyo. Otwa hambelele wo Kalunga unene omolwetameko ndika.

AADIKONISA OYA
TAMEKA IILONGA



Hilma K. Nikodemus

Omutoolinkundana okwa tsakaneke omudiakonisa gwegongalo lyOniipa noya popithathana: "Wu uhalapo meme? Ongoye olye noto ningi shike sho u li awike pongerki omutenya?"

"Ongame omudiakonisa Hilma Kupila Nikodemus. Otwa li twa gongala naagundjukakadhona Aaniipa nongashingeyi otwa halakana." - "Wa tameke nookuli oshilonga shoye sha simana?" - "Eeno tuu, ote kambadhala."

"Oho longo naanaa shike meme?" "Esiku limwe ohandi endaenda nomagumbo momukunda. Te yi megumbo kehe notandi ya popitha, unene aakulupe, aaposi, aavu, omagoya nosho tu oyo unene he kongo ihe naalinawa wo otandi ya talele po." - Ngele wa adha megumbo mu na, tu tye omuku'lupelela, oto mu ningi shike? "Nguka tango tandi kundathana naye oohapu dhowala. Opo tatu uka moompumbwe dhe. Ngele nda mono oompumbwe dhe, ote tala sho te ningi." "To ningi ngaashi shike nee?"

"Ngele okwa kaka otandi mu yogo. Ngele oonguwo dhe wo odha kaka, otandi dhi mu yoge. Ngele ke nomeya gokulongitha otandi ke mu tekele. Ngele ke niikuni, otandi ke mu tyayela. Ngele oku nuwehame uunene, otandi mu lopota koshipangelo nenge komusitagongalo pu holoke ekwatho mbalambala." - "Oi, u na nee iilonganga. Te ti: oho ende noothewa?" "Eeno, ohandi ende nokakofa kiiyakulitho yandje. Ihe tu noluhepo, ando tu mone iiyakulitho ya gwana yopalutu wo, ando tatu yakula nawa. Ihe oshilonga shika oshinene otatu pumbwa shili omagalikaneno.

OTATU KU ADHA



"Napoleon" oyo osipana yaadhanitanga ya Niimwandi. Okuza kolulyo oyo: G. Tshithigona, J. Aupa, J. Emvula, G. Erman, J. White Uunona, S. Hipondoka, M. Amupolo, D. Kapia, P. Ankama, J. White Atshipala, nopevi S. Netumbo.

Otwa dhana siku limwe naKa-

tana neyamukulo olya li 2-2, ano kapuna aasindani. "Napoleon" okwa dhana noosipana odhindji nokwa sindana. "Napoleon" okwa hala kOngwediva, a tale nge ta mono "ekopi." Kalunga ne mu kwathe mu tote oosipana dheni pwaana iiponga.

Damian Kapia.

TWA TALELE PO
ONANKALI

Ongundu yaalongi aagundjuka pamwe naamati aakongindjila yokOnyaanya oya li ya tokola yi ka talelepo epya lyetumo kOnankali.

Esiku 25.8.67 konima yootundi oshendo shi na aamati 21, naalongi ya 4 sha li mewiliko lya F. NDAPOPIUA, osha yi mondjila. Gwokathanguthangu ta thanganya ngaa. Aalongi ya 3 pamwe naamati yamwe twa ende kolupadhi oshinano shoomaila 5, opo ihe twa mono ekwatho koomaila 8 dha hupu ko notwa li twa thiki kuyele,

Hwiyaka otwa adhika twa tegelelwa nondjungu. Ohungi yetu ya li ya pewa edhina ndika. "Shono shaa nedhina muuyuni no sha dhinika, Kalunga e shi hogolola, oshono shaa shi oshinima, opo a hanagule po shono shi li po." Ya li ya tamekithwa ku M. IHUHUA. Nomolwashoka otwa li twa sakala omaziko gomililo gaali omanene, mumwameme JOHN ANTI-NDI okwa ningitha po wo ondhelela kashona kowala.

Ethimbo lya hupu ko olya longithwa okudhana iinyandwa ngaashi "Mary gwa Helsinki" na "Oseminali" pawiliko lya M. Ndjambi. na M. Nangolo. Mbika ya li yi na sha noshi-

longatumo. Osho kwa gwedhwa wo uutewo womomalaka gatatu. Mumwame John Kanandjembo a mono ompito, opo a pandule ontungwa yoompundu twa li twe yi tuminwa kAanankali, pethimbo lyoshigongi shaagundjuka yoshitayingerki shOndonga sha li mOnyaanya.

Ompito ya landula ya li ya longithwa okugandja ongalo. Moka otwa mono mo R2.00, oohema 4, dhoshimati, oombaikitha 3, na olakana 1. Ehwamo enene olya li lya monika mu mwene gwomukunda ngwiyaka Kakuja ka Ngwali, sho a gandja R1 mongalo ndjiyaka. Ongalo ndjiyaka twe yi thigile aawiliki yaahwiyaka.

Twa gandja ihe ompito kaanegumbo mbaka Ev. A. Ihuhwa, na Juff. K. Shikongo. Mbaka ya hulitha ohungi yetu nondjimbo 39 mehangano.

Ongula yesiku 26.8. twa endaenda nomukunda okutalela po. Mokugaluka, otwa li twa dhana etanga lyokomake, ndyoka olya li lya nyanyudha aatali. Epandulo lyetu olya li mpoka, sho twa li twa mono omayakulo gokolutu ga gwanwa. Etalelopo lyetu olya hulile potundi ontine yokomatingo. Etumbulo lyetu lya hugunina o-lyo ndika. "Ongame omusita ngo omwaanawa, omusita ngo ta gandje donzi dhe omwenyo gwe."

Peha lyosheendo,
F. Ndapopiua.

OSHIVILO SHETUMO MOUKWANYAMA

Osha kala eti - 2-3 Septemba 1967 mEngela. Ovakriste va ongala. Ove uya okuhambelela Kalunga, eshi evangeligeli la fika mOukwanyama. Tava pandulile Kalunga oinima inene e va ningila.

Oshivilo sha hovelala noxungi, omo oshilonga shetumo sha kundafanwa, sha fatululwa noipopipiwa nomafano. Ongula yoshondaha kwa ningwa otundimbibeli. Omushamane Andreas Mu-

ngungu a wilika otundimbibeli. Oshilonga shetumo sha kundafanwa, no- ngunga yovakriste ya ulikwa kutya, tu nokulonga neulumo nemanguluko oshilongatumo.

Elongelokalunga mongerki la ningwa kovafita Natanael Shinana naE- lia Haipinge. Eudifo la ningwa komu- bishofi, a fatulula Maria naMarta nghene va yakula Jesus meumbo lavo. Jesus a panda eyakulo laMarta lopa- lutu, ndelene ina panda eshi e li ni- nga nomangungutulo. Osho tu noku- yakula nomwenyo muwa nemangulu-

ko. Omangungutulo taa tele kokule eyambeko lOmwene mokuyakula kwe- tu.

Omufitaongalo Adolf Hangula a udifa otekisti oyo ya udifwa komubi- shofi. Hangula ta londwele kutya: Maria yo ou a kala omutumba pee- mhadi dOmwene, ke nokumwena ashike. Oku nokupwilikina nawa, okunwa na- wa, okumona muJesus eenghono, opo a ye moilonga yeyakulo. Osho tu noku- kala puJesus nde tu dje po tu ye moi- longa. Ounona va ningilwa elongelo- kalunga momyandi kovafitaongalo Kornelius Ndjoba naFilippus Shiko- mba.

Oshivilo sha twikilwa vali pondje momyandi konima yefudo. Ovaudifi Josia Mufeti, Natanael Shinana, Nata- nael Paulus, Okavango, va udifa evan- geligeli louhamba. Ismael Ninda meudi- fo laye a holola elalakano loshivilo kutya, olo ashike: okuhambelela Ka- lunga. Väinö Simojoki a ulika omhe- po yomutondi ya nyonauna po oshi- wana nde tai nyonopo oshilonga sheu- difo levangeligeli meemwenyo dovanhu. Okwa tumbula: Hoololeni ou mwa hala okukalela. Omukulunhutumwa Arvo Eirola meudifo laye a pula: Epuko oli li peni mbela, eshi enyonau- ko linene le uya? Tu taleni opo pe nepuko ndele tu wapeke diva nde tu longe nawa oshilongatumo.

Ovanyasha ovaneumbo mEngela ova imba omaimbulo mawa. Omubi- shofi a xulifa oshivilo nenangekonou- puna.

L. Shemuvalula

OSHIG NGI SHAAGUNDJUKA YUUNINGININO

MOnesi eti-16-18/6/1967 mwa ningwa oshigongi shaagundjuka yUuni- nginino. Oshigongi shika osha tamedikithwa nelongelokalunga ongulohi ku- T. Pentikainen. Enenedhiladhilo moshigongi shika nolyo lye shi pangele olyo: "LONGELENI OMUWA NENYANYU."

"Omeho okutala, iithindi yomakutsi okupulakena." Aagundjuka ya kala nombepo yimwe, ongomuntu gumwe. Shitiwa egumbo limwe, oshoka ayehe Aauninginino ngaa. Omadhiladhilo getu ga thikithwa kEps. 133:1. Muu- kumwe mbuka wawo ya hala shili okulongela Omuwa nenyanyu. Omapa- ndela ge shi koonna mo. Oshoka agehe konyala oge na edhiladhilo limwe: "Otse uuyeleele wOmuwa."

Miipopipiwa ayihe ya popiwa noya kundathanwa moshigongi shika, aa- gundjuka ye yi taamba nenyanyu. Oya tala otayi pumbiwa notayi ya kwa- tha mokukala kwawo. Nandi holole owala iipalanyolo hoka oonkundatha- na dha li dha tungila.

- 1) Aagundjuka mboka ya nyengwa okuholoka miigongi yawo, otatu ya kwatha ngiini?
- 2) Iimaliwa natu yi longithe ngiini?
- 3) Otundimbibeli momafano.
- 4) Elongekidho lyoshigongi shokOnakayale. Oondjimbo nomahokololo ga li mo kupula we.

Moshigongi shika otwa taamba mo aayenda ya simana oohAune Autio naShilongo mboka ye tu pe oshindji mOshigongi shika. Omupangeli lika- sha a kala mOshigongi shika nokwa holola enyanyu lye moku shi mona. Aasitagongalo yamwe ya holoka mo. Aanangeshefa yetu wo. Kalunga na hambelelwe sho naambaka ya tumbulwa mpaka yi iningi "YOmomutanda kii koka."

Okwa li wo omalanditho giinima ngaashi: oombe, omagungu, Appels, oomongwa noonguwo. Shoka sha zi momalanditho po osha li ngeyi:

Onesi	R76. 00	Onawa	R 66. 00
Okahao	75. 00	Ogongo	59. 00
Elim	75. 00	Onangalo	55. 00
Oniimwandi	75. 00	Onaanda	50. 00
Tshandi	75. 00	Nakayale	45. 00
Etilyasa	70. 00	Etunda-Mindamba	26. 50

Kumwe R747. 50

Moshigongi shika mwa gongelwa wo oongalo dhopaali.

- 1) yOshiketha shaagundjuka mOshitayingerki R 33. 21,
 - 2) Ekwathotungo lyegongalo onkelo lyOnawa R 5. 10.
- Omwa gongelwa wo iimaliwa omolu onyama nomandhindhiliko R 48. 99.
Shoka sha gongelwa moshigongi shika kumwe osho. **R834. 80.**

Taa! "Okanti nopeumba." Onesi ndjika twa li twa dhina, oyo ya ningi yotango momathigathano ngaka. Kalunga na hambelelwe sho ta hwameke oomwenyo dhaagundjuka yetu mokugongela sha omolu oshilonga shetumo. Aagundjuka aaholike mongerki yetu, LONGELENI OMUWA NENYANYU.

Peha lyoshigongi,
Mika lilonga.

INAMU HILA WE KOOMBIGA DHOYAKWENI

One mu hole kutya: Pendje ndi hile kombiga yoye. Osho tamu paathana omukithi. Ndishi nguka a hili tango, kombiga okwa thigiko omayeye ge, moka mu na oombakiteli dhashoka shi li muye? Ngweye sho to ka hila ko dho tadhi yi mokana koye? Ngoye ku nasha oto ti owala "mpwaku, mpwaku?" Ngoye ku shiwo kutya, ngwiwaka oku nomukolo nenge oTB oyo nga to ukitha mokana koye ndishi? Inamu shi yelekela we. Omakaya gogene paathaneni ngaa, oshoka ihaga tindilwa mukweni, ihe inamu hililathana we koombiga. Ngele ku na mbiga nenge yoye ya kana, ka lande yimwe nenge u gonye yoombale.

OUNYUNI OTAU TONGO SHIKE

EFYO LOMBADILILA OTALI TU VAKELE

Ovashamane vavali va fila momufima.

Elaka loluhodi ola dja kuKongo mOushilo wOukwanyama kutya: Ova-shamane vavali, Silvanus Homateni weongalo laKongo, nale Omuhalushu naNoa Shikongeli weongalo lomOndobe, ova fya ombadilila va wilwa komufima eshi va li tave u xupu.

Silvanus okwa hangika a ninga eumbo momukunda Omushakala ponghulo naKongo. Noa a li nediladilo lokutembukila kOmushakala. Okwa ya ko nde-va kondjifa okulikongela omeva momukunda wavo. Ovo vavali nokanona okamati ova li aveshe vatatu momufima tava xupu. Konima yokafimbo kanini okamati oka dja mo momufima. Eshi tuu ka fika kombada, omufima owa ngumuka nedu lihapu ola tuvikila ovashamane filu. Okanona ka ka kuwa onguwo, nokonimaomidimba da lafululwa mo. Ava aveshe ova li ovakriste ovalineekelwa. Omulineekelwa ou a hokolola onghundana ei ota ti kutya, Noa okwa li omutaleli nomuyakuli moudiakoni meongalo lOndobe.



Nomudo ou Jesus ta ifana ovakwau-nyuni avesheveshe: Ileni kwaame amu-she tamu longo nomwa loloka, ndi mu tulumukife. -Vangapi tava uduko ondaka yaye?

OVAENDA VA TALELAPO ONGERKI

Ovaenda vane, omushamane H. Lohmann womuHamburg, omushamane K. Herbert womuBarmen, omawilikerki mOushimba H. K. Diehl wa-Windhoek nomupastor wOvanama Paulus Gowaseb, ova talelapo ongerki yetu.

Ovaenda vavali vomuDuitsland ova kala moshivilo sheedula 125 mOushimba nde opo ve uya va tale ongerki yOwambokavango. Ova talelapo eenhele neenhele mOwambo nde opo va shuna vali.

OMULILO OGWA HALAKANITHA

PWA HOKOLOLWA, OLWAADHI LWA FIKE ONGERKI YANAYENA THILU NOONGULU ISHEWE NDA-TU DHA PI PO

Onayena (Ondonga).- Kwa kundanwa, kutya: Omvula sho ya hala okuloka ongulohi yeti-4 Septemba 1967, olwaadhi lwa shela noonkondo lwa dhimbululwa koyendji yomudhiingoloko gwegongalo lyaNayena. Ongerki ya hwama omulilo ongulohi, pethimbo lyolwaadhi noya lungunapo thiluthilu pwa hupu ashike omakuma. Oongulu ishe-we ndatu dha li mooha dhongerki, nadho wo odha hwama nodha lunguna po thilu. Mongulu yimwe mwa pile iinima yoskola.

Omusita gwegongalo kuku Malakia Ntinda a adhika mUushimba mefudho. Tu galikaneneni egongalo lyOnayena moluhodhi olunene lwalyo.

OMASHINA GA DHENGATHANA.

Karasburg.- Omutse gweshina noshikoto shangaata, oya nuka ko kolutenda, sho omashina ga dhengathana omasiku ngaka puKarasburg. Aahingi yaali oya falwa moshipangelo ya mona oshiponga. Omutse gweshina noshikoto oya mbonyauka nayi. Oshiponga osha ningwa, eshina tali zi konima lya mbombo ekwawo.

UUVALWA UTANO WA SI

Joao Pessoa (Brasileë).- Uunona wa valwa pethimbo limwe komukulukadhi Maria Lius dos Santos mu-Brasilië, uumati une nokakadhona, owa si mbala konima yesiku limwe. Yina oku li nawa.

OSHIPONGA SHOMULILO NATANGO

Eti-4 Septemba kongulohi, me-gumbo lyetu omwa holoka oshiponga shomulilo olamba sho ya topa omulilo nogwa hwameke ondunda yaanona yimwe noyalunguna po sheke.

Omulilo nguka ogwa holoka sho pwa ningwa epuko ndi: Oolamba ndatu odha zilwa openzina peha lyomahooli gokutemitha moolamba nokwaaha shi sha. Elago enene olya li mpoka sho Kalunga okwa gamene omuhwameki gwolamba ndjoka. Oolamba oonkwawo inadhi topa nando nadho dha li wo dha zilwa openzina nodha hwamekwa.

Otatu hambelele Tate Kalunga sho inaapu holoka oshiponga oshinene nando sha li sha gwana ku holoka mpaka.

Otandi londodha kutya: Kotoka waa zile openzina molamba pehala lyomahooli. Kotoka waa hedhithe openzina pooha dhomulilo.

A. Amukugo.

OSHIHAUTO SHI IDHENGE MOHOLONGO

Popepi nokapale koondhila ka-Windhoek, opwa holokele olwaanyu. Manga omutiligane a lyako oshihauto she oontanga, oholongo oya matuka komeho noshihauto shi idhenge mo nosha kandoma. Omuhingi gwoshihauto a li mo awike, okwa mona oshiponga mokugulu noshihauto sha yonuka nayi.

OMUDHIMBA GWI ITSUWA KAAPOLISI

Aapolisi yaRhodesia oyi itsu omudhimba gwomuluudhe mokuti. Naku-sa ogumwe gwaakondjelimanguluko mboka ya dhipagelwe omasiku ga zi ko kaapolisi yaRhodesia.

OMULAULE A FYA MOSHIPONGA

Keetmanshoop.- Ololi inene yotututa oihongomwa, ya hangika mondjila yaWindhoek na Keetmanshoop, oya kandoma. Omulaule umwe okwa fya pokafimbo oko, mukwao okwa ehamekwa unene. Oshihauto osha nyonauka po.



Israel Negumbo, Windhoek, ta monika mefano komesho, okwa talelapo Owambo nokwa kala moshongalele shovamationgalo mOnhanda kOupundi. Ota ti: Onda tala oihóngwamo iwa ihapu. Nda mona oradio ya hongwa moshiti. Moiti mwa hongwa eedila, oihauto, oikuti osho nosho. Unene nda tala, nani oshiwana shi na Kalunga kasho, oshi nelao nde otashi ehene komesho mounongo.

Klaudia Hauuanga, Tshandi, ota ti: Omolwashike ho ende nedhiladhilo lyokudhipaga mukweni? Oshike wa tokola okutsa nomwele, oshimbele nosho tuu omushitwa omukweni? Oshike wi ininga "otyaka" noto shi nya-

nyukilwa? Ombili owe yi kanitha. Oshike to ende wa tiliganeka omeho? Oga tiligana koshike? Oshigwana shi. nombili yokukalathana otashi humuko. Ombili yi konga momushigakano

Jesus okwiidhidhimikile uudhigu woondjo dhetu, sho kwe dhi humbata po. Shika otatu shi mono naanaa nkene Jesus a humbata omushigakano. Omwiitaali gwashili naye ota pumbwa eidhidhimiko ndika, opo a wape okuhumbata po uudhigu wangoka omukundi, kee na oonkondo.

Omukwetu, openi ano tatu adha eidhidhimiko lya tya ngeyi? Kape na nando omalimbililo otu na okuli konga muJesus. Oshoka oye e tu pe oshiholelwa oshiwana. Olungapi wii dhidhimikile okuhumbatapo uudhigu womukweni gwontumba? Eeno, ezimino tatu li mono nuupu, nokuli ohelabela nda kwatha nima sho kwa li ku na uudhigu we. Kuume, konga eidhidhimiko muJesus Kristus. omanga u na ethimbo nomanga Jesus ta monika. Oshoka Omuwa ta ti: Ongoka ti idhidhimike sigo ehulilo, oye a sindana.

M. Amoomo.

Otwa lesa: Petrus a dhimbulukwa oohapu dhaJesus, okwa piti pondje nokwa lilile oondjo dhe nokulililila.

ETSEYITHILO

Oshigwana oshisimanekwa, oshihauto shoka mu wete mefano, osha pitikwa kepangelo lyoondjila ndyoka hali ithanwa "Plaaslike Padvervoerraad," oku mu yakula nenge okufupipika ondjila pokati kOndangwa nOshakati. Omadhiladhilo ngano onde ga kongele oondjenda kehe.

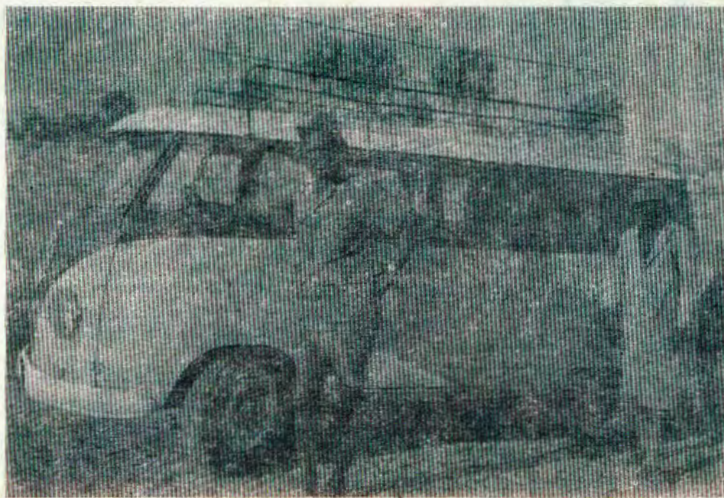
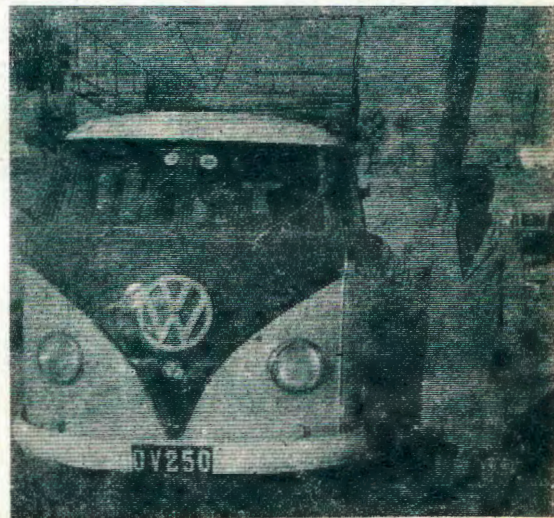
Ano otandi indile oshigwana shi galikanene iilonga mbika, yaa kale yandje mwene, ihe yi kale yokuya kula oshigwana sigo omapipi taga landula. Ngame ndi ninge ashike omukokolindjila, omapipi taga landula ge ende mondjila ondjelele.

Omahala gokuhelukila nokulonda ogo ngaka: No. 1 ONDJONDJO KAFEE No. 2 POSKANTOOR ONDANGWA, No. 3 AKUNIIHOLE No.4 EKO LYANAAMBO, No. 5 AKWEE-NYAGA No. 6 ONGWEDIVA, No. 7 OSHAKATI KAFEE. Omahala agehe ngano oge na uupeleki wa shangwa ngeyi: Bus STOP, OV. 250 ONDANGWA-OSHAKATI.

Oofuto odhi li ngeyi: Okuza Nos. 1-2=10c; Nos. 2-3=20c; Nos. 3-4=25c; Nos. 4-5=30c; Nos. 5-6=35; Nos. 6-7=50c OSHAKATI.

Oshihauto otashi tameke eti-1 OKOTIBA 1967 PONDJONDJO KAFEE. ESIKU NDYOKA OTAKU KALA OSHITUTHI OSHINENE. Omumbisofi L. Auala, ota tegelelwa mo. One ookuume amuhe aaholike, omwa tegelelwa wo nando inamu tumbulwa ileni nenyanyu, mu tale etameko lye humokomeho mevi lyOWAMBO lwo-tango. **Oshihauto otashi kala nokwenda esiku kehe KONDANGWA KOSHA-KATI, KOSHAKATI KON-DANGWA.**

Gweni,
Silas Kuejo,
Box 5,
ONDANGA.



"OMUKWETU" oha zi mOniipa.- Omukuluntu gwoshifo/ Hoofredakteur: Omumbisofi Leonard Auala, amushanga gwoshifo/ Redakteur: Leonard M. Shemuvalula, Oniipa, Pk. Ondangwa.- Ondando komumvo mOwambo 60c, mUushimba nOkavango 80c. Oofuto nomambestelo naga tumwe kOmukwetu, Oniipa, Pk. Ondangwa.- Moka hashi nyanyangidhwa: FINSE SENDINGDRUKERY, OVAMBOLAND, S.W.A.