

# OMUKWETU

Oshifo shOngerki onkwaevangeli paLuther yomOwambokavango / Die Tydskrif van die Evangeliese Lutherse Ovambokavango Kerk

No. 12

JUNI

1967



Omusamane Erkki Hynonen tu wete mefano, paife okwa alukila kuKongo. Ove li mefano nomwevangeliste Lot Kaishungu nomapenda amwe ovayebele. Otava tale oilonga yomapya i ehene nawa komesho meefuka doushilo wOukwanyama.

## OU EHE NETIMBA NE MU DENGE TETE Joh.8:1-11.

Luhapu omunhu oha nyengwa okudimbulukwa oulunde waye. Oonakweeta omwalikadi omulunde kuJesus, ova li ve udite vo ove li po ovayuuki. Omesho avo okwa pashuka ashike okumona oulunde wawakwao.

Ovafarisai novanongovomikanda ova kala ve hole okutela Jesus omwiyoyo. Omwalikadi ou kuJesus ove mu etela ko okuyula Jesus ngeno. Jesus ou e wete osho shi li momunhu kesheshe, noku na omesho okutala momu tima womunhu, okwa xupifa omwalikadi ou nondjila ya yela. Ina longifa oipupulu ile oinheya ngaashi ovakwanyuni hava ningi. Jesus okwa enda moshili ya yela. Ou ehe na etimba ne mu kupule tete, itashi ti Jesus a panda omwalikadi ou molwaashi e li moulunde ahawe. Jesus okwa hala a shike a dimbulukife ovanhu oshinima eshi kutya: Keshe umwe ou na okulikona koshipala shaKalunga. Ito

pumbwa okutala ovanhu. Jesus a hala tu shiive fye naave kutya: Ha okutala vakwetu ku na ekwafo kombinga yexupifo lange. Na vali, ha oulunde woluhaelo auke u tondike kuKalunga, ndelene oulunde tuu kesheshe.

Omwalikadi ina ya, nande a mona ovaeti vaye va fadukapo, okwa mwena puJesus noulunde waye. Ke na omalivandeko a sha. Nonena Jesus ota yakula ovalunde va fa ou. Oulunde u kale ufike peni, mwena puJesus. Ino lituvika oshipa shodi. Ino kala moihelele ile moiningilewina. Mwena puJesus omulundelela ngaashi naanaa u li. Ngaashi Kalunga ou e shii aishe e ku shi, osho u kale puJesus nena wa ninga omunelao. Nelaka liwa to li mono oleli: Naame yo itandi ku tokola, inda ndele inonyona vali.

Adolf Hangula.

## OMUSHAMANE S. LÖYTTY A SHUNA KUSOOMI



Efiku eti - 8 Apilili 1967, omushamane Löytty novaneumbo laye, ova fiya po oseminali yovafita kOtjimbingwe molwoinima youkolele inau wana.

Okwa tuma omakundilo koonakulonga pamwe mOngerki aishe, unene yo ovo a longa mefimbo leedula dhe odo a longa ofikola youfita. Omufitaongalo Urho Poikolainen muKotoba omudo wa ya, okwa hovela oshilonga shoulongi mOtjimbingwe ponhele yomushamane Löytty.



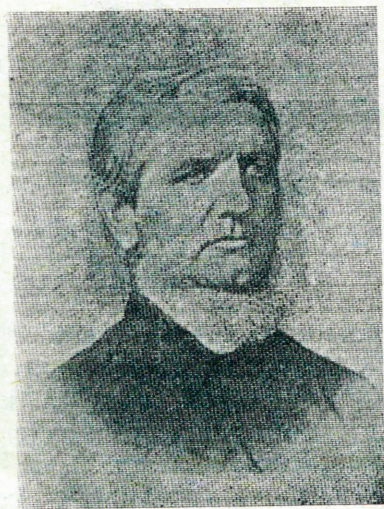
JUNI 1967

## PAIFE OITA OYA XWAMA POKATI KAEGIPITI NAISRAEL

Oita oyo ya hala okuxwama pokati koilongo ei ivali, paife oya xwama nde otave lidenge neenghono efi-mbo keshe. - Israel sha kondekelwa kovanaita nde va hala okuhanauna po noshilando shiyapuki Jerusalem.

Omatanga ovakwaita vaNasser omupangeli waEgipiti kumwe novakwafi vavo, ova xwamena Israel nde va idila omhito yeeskepa puSuez. - Omatanga Ovaisrael mewiliko lomuwiliki woita Omuisrael Generaal Dayan a xwama nde tava popile oshilongo shavo, ngaashi ve shi pewa kuKalunga. - Omatanga oita taa ende nokulwa moitukulwa yoilongo ei nde inapa shiivika exulilo tali ka kala ngahelipi.

Omupapa Paul muRoma nosho omukesari waEthiopia Haile Selasi nosho hamushanga woilongo ya hangana U Thant navamwe, ova indila ounyuni, unene omapangelo manene ounyuni, a kondje shili, opo oita ei iha hanaunifepo oshilando shiyapuki Jerusalem noiha ninge oita younyuni aushu. Ovapangeli vanene vounyuni paife otava kulukuta nokukundafana nokutala eemhito dokukandulapo oita ei, iha tandavele neenghono.

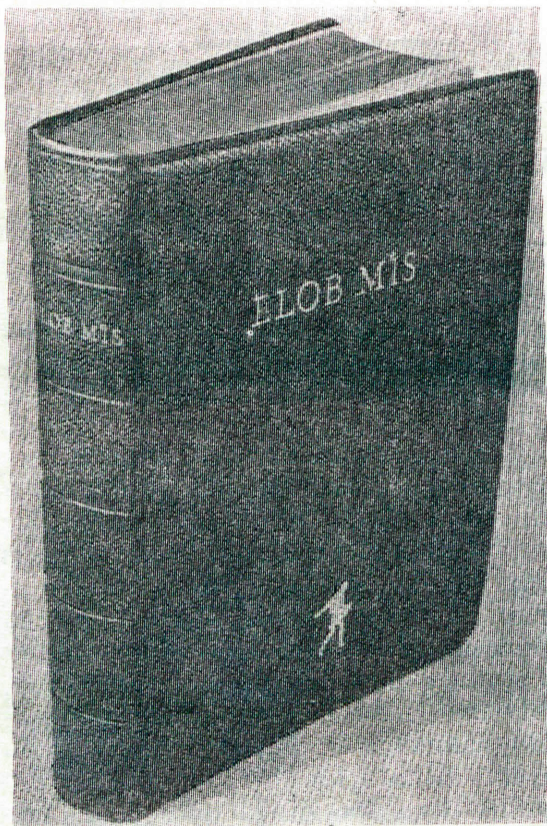


*Omuhongi J.G. Krölein, ou a hundululila Ombibeli mOshinama.*

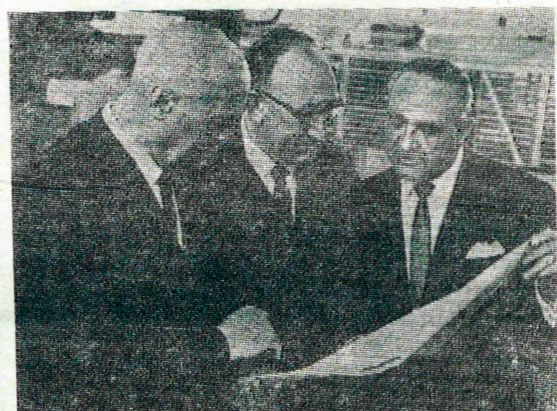
## OMBIBELI IPE MOSHINAMA OYA HAFELWA



Apa omushamane H. K. Diehl, nomushamane Jongh van Arkel nosho omufitaongalo Andreas Isaak, cmukalelipo wOvanama pefimbo Ombibeli tai yandjwa kovaleshi.



*Ombibeli yOshinama otai monika mefano.*



Ava ve li mefano ovo Dr. A. J. v. d. Merwe omunashipundi wehangano leembibeli muSuid-Afrika, omushamane H. de V. Coetsee, omuwiliki woshinyanyangido shaNasionale Pers nomuhongi J. T. de J. v. Arkel, hamushanga omukuluntu wehangano leembibeli tava tale oinyolwa yotete yenyanyangido lOmbibeli yOshinama.

# EHOKOLOLO LYOMAGONGALO 1966

## OSHIKETHANGERKI

### IITAAMBWA

1. Iigandjwa, aat. aa.....	R 1638. 53
2. Oongalo .....	R 2731. 66
3. Omagano .....	R 492. 65
4. Iitaambwa, ekwatho .....	R32805. 53
5. Oondjambi .....	R 351. 00
7. Omalweendo.....	R 500. 00
9. Aagundjuka.....	R 2167. 93
11. Etumo .....	R 1494. 47
12. Yilwe.....	R 1395. 15
13. Ooskola .....	R 938. 63

R44516. 44

Shika otashi holola  
oya longithwa ya zi  
moshihupe 1965.

x R19327. 32 x

R63843. 76

### IIFUTWA

1. Iigandjwa yomUushimba .....	R 51. 53
2. Oongalo, uusita nombako .....	R 436. 27
4. Iitaambwa, ekonakonovi.....	R 6759. 36
5. Oondjambi .....	R 9301. 73
6. Omatungo, Oshakati.....	R13964. 85
7. Omalweendo .....	R 8019. 47
9. Aagundjuka .....	R 614. 11
11. Etumo .....	R 2075. 77
12. Iifutwa yilwe .....	R 2770. 20
13. Ooskola .....	R 8492. 70
14. Oompumbwe kOkavango .....	R 775. 17
15. Ekwathomagongalo .....	R13582. 54
	R63843. 76

Efaneko lyobegrotenge yoshikethangerki lyomumvo 1966, olya li lya tegelele iimaliwa yi thike — R5498. 00  
Ihe iimaliwa mbyoka ya monika momumvo ngoka oya li ..... R44516. 44  
Shika otashi ti efaneko olya shonopala nooranda..... R10008. 56. Eshonopalo ndika olya zi mpaka sho inaa-  
tu pewa iimaliwa mbyoka ya fanekelwa omatungo gosikola yaayakuligongalo mEngela nosikola yaayeleele kuKo-  
ngo ya li yi noku za kuL.W.F

Nonando otwa mono ohenda yi thike mpoka okuyelutha oondjambi dhaasita naayevangeliste kekwatho lya 30%  
na ndyoka lya 50%, nomagongalo ga piti nawa momimvo ndhika ndatu, notu netegelelo wo taga ka pi-  
ta momimvo mbali dha hupa ko, oshikethangerki osha thigilwa ngaa iilalo tayi pumbwa okupangwa.

Ndishi otwe shi tseyeni kutya, egongalo kehe olya uthilwa 30% yalyo pawindji waasita naayevangeliste yamo?  
Osho wo oshitayingerki koshikethangerki oshi na yasho ye shi uthilwa. Ngele pwa holoka egongalo lyontumba  
inaali gwanenwa ku 30% yalyo notali tegelele li gwedhelwe ekwatho, nena iimaliwa mbyoka yekwatho etiyali otayi  
etele oshikethangerki oluhepo. Ihe ekota lyoluhepo lwiiniwe megongalo oli nomakankameno galyo kokwaagandja  
iigandjwa, ngaashi mwe shi dhimbulula kutya, nando omagongal oga kondjo shili okugandja shi vule shito mo-  
mimvo ndhoka mbali dha landulathana (1965-1966,) opu na ngaa oyendji inaaya gandja. Omwaalu gwopokati (ge-  
middeld) mongerki ayihe mokugandja iigandjwa ogwo 35 1/2% ashike momumvo gwayi, 1966. Omagongalo Onta-  
nanga, Mpungu nOshigambo ogo ageke ga gandja nawa, noge shi okukala oshiholelwa.

1964 ekwatho lya 30% olya li lya topolwa ngeyi: (a) 30% ngaashi ya yalulilwa egongalo kehe. (b) Oongunga  
adhihe dha a dhika momagongalo okuza 1961-1964, omagongalo sho ga nyengwa okutsakanitha oondjambi dhaa-  
sita naayevangeliste. Otwa li twa nyanyukwa shili sho oongunga dhapu okufutwa, twa tegelela omagongalo taga ka  
tsikila pwaa noongunga. Ihe onkene ngaa twa dhimbulula kutya, shoka sha uthilwa egongalo lyontumba oku za  
1995-1966, inashi siikila oluhepo lwomagongalo gamwe. Otwa gwedhele ishewe ekwatho etiyali. Momumvo 1965  
twa gwedhele po R3553. 00 na momumvo 1966 twa gwedhele po R1258. 99. Egwedhelo etiyali alihe kumwe  
olya adha R4791. 99. Ando opwa li pwa kondjwa nuudhiginini okuza mpoka sho ongunga ya manwa po, ando  
mbika yekwatho etiyali oya kalele ngaa oshikethangerki. Pamukalo nguka, okwatya ngaa omagongalo inaga ya-  
mbapala, ihe oshikethangerki sha nkundipala ashike.

Kombinga ya 50%, ekwatho etiyali lyokuSoomi ndyoka twa pewa pokati komumvo 1966, nomumvo nguka o-  
tayi kala wo ya shonopala, oshoka Ehanganotumo lyaSoomi inali zimina omwaalu aguhe ngaashi gwa indilwa.  
ihe oya kutha po meindilo R4000. 00, meinekelo omagongalo otaga ka mona mbyoka megwedhelo lyiigandjwa  
ndyoka lya tameke petameko 1967. — Kombinga yiigandjwa yomUushimba otu nelalakano okuyi topolela koma-  
gongalo lwaali momumvo, pokati komumvo nopehulilo

(Etsikilo moshifo tashi landula.)

M. Ngipandulua.

## ONDILO YOMUWA- MBO YA POPIWA

Omushamane umwe Eben van  
Zyl, okwa popya moshongalele. O-  
ta popi ta pe ovatilyane oushima  
eshi ihava longo oilonga yavo vovene,  
ndelene tava longifa ashike ova-  
laule. Okwa pula kutya, olyelye  
omutilyane iha longelwa komulaule?

## VAVALI VA FYA MOSHIPONGA

Mondjila pokati kOtjiwarongo  
naWaterberg, Prisca Shilina vo na-  
Elizabeth Kulinemo, ova fya moshi-  
ponga shoshihauto.

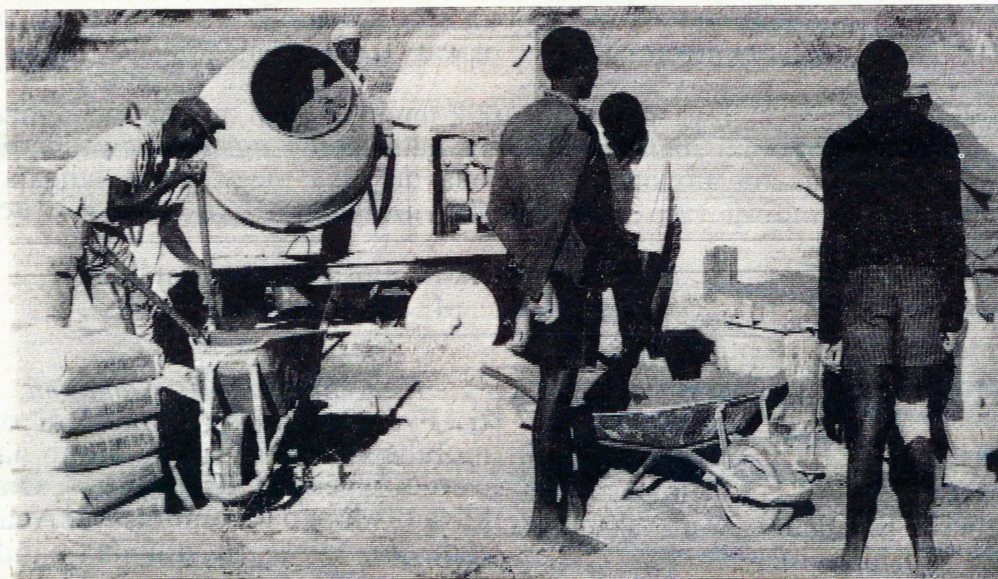
Ovapolifi ova ti kutya, oshihau-  
to shi na Ovaherero, tashi shingwa  
kuOtto Thoperepi, osha kandoma,  
etaela lasho eshi la topa.

*E. J. Shaetonodi, Namutoni, ota*  
*ti: Fye ava tu li poNamutoni otu li*  
*moluhepo linene, ihatu mono nande*  
*ovaudifi velaka lOmwene. — Omafi-*  
*ku a otwa papala omubishofi Auala a*  
*enda po. Okwe tu ningila oandaha*  
*nopo eemwenyo detu da xuxumu-*  
*kwa. Inamu dimbwa yo Namutoni.*

## W A A K A M B A D H A L A I T O



*Mefano ndika otamu monika aakulukadhi taa hondjo puElim. Okuza kolumoholela otatu mono omuwiliki gwehondjo meme Marta Elungi.*



*Aasamane taa tholoma oombaskena dhosamende okutamekitha omukanka gwongerki. Otaa longitha eshina lyokulunga osamende.*

Egongalo lyaElim olya tokola okugongela iimaliwa, opo li itungile ongerki yalyo ompe ngaashi omagongalo galwe ge na oongerki dha za ko. Oshigongigongalo shomumvo osha utha okutunga ongerki ompe Kalunga ngele ta zimine. Ongerki otayi ka pula ooranda R 3, 500.00 Ngashingeyi omikanka odha tamekwa nokuli. Ihe nando ongaaka otu shi uvite kutya: "Kokule ihaku thikwa ongula."

Aanasitora aayElim ya gandja omagano niyando ya hupu kiiyata sho ya landithwa po, opo yi hondjwe nongerki yi monenwe iimaliwa.

Okangundu kaakulukadhi 15-20 hoka haka gongala lumwe oshiwike kehe, muule woomwedhi ndatu, oka kambadhala opo ka tale "genongo ngele taga fe gongombe." Aakwanegongalo mboka yaa na ethimbo okuya kehondjo yo ye na omashina gokuhondja oye ga gandja, opo okangundu ka vule okweendelela mehondjo. Okangundu haka otaka wilikwa kumeme Marta Elungi. Omuwiliki osho a tsu okangundu ke omukumo ta ti: "Waa kambadhala ku sindi."

Eti - 20. 5. 1967 OBAZAAR (omalandithopo) yotango oya ningwa pongerki yaElim. Mongerki omusita E. Shilongo a tamekitha OBAZAAR yongerki noohapu dhaKalunga negalikano. Konima aantu ya tameke ihe okulanda. Iinima mbyoka, ya landwa: iizalomwa unene yaanona mbyoka yi na ombiliha, oombiga iigwilo, omalapi gokoombete, uugala waanona, nosho tuu.

Taa! ku tala we, pokuma opwa li aalandi naalandithi yi itula mo nawa. Shoka tashi nyanyudha osho shika kutya, aantu itaa landa iinima molwa sho ye yi pumbwa unene ando aawe, ihe omedhiladhilo ndika ongerki yi mone iimaliwa. Tala, oshinima ngele osha pula ando 20c gumwe ota ti ngame onde shi hala koosende 40c omukwawo ngame 60c sigo oshinima shoka sha li shondando 20c otashi ka landwa po R1.50-R2. 00. Ehalo ndyoka ewanawa lyokangundu kagwElungi pamwe naalandi naalandithi Kalunga a yambeke onkambadhala ndjoka noya eta R122.00 esiku tuu ndyoka. Egongalo lyolyene olya kambadhala nolya gongele, sigo ompaka ooranda dhi vule R2,600,00 inamu yalulilwa mbyoka.

## S I N D I — E G O N G A L O L Y E L I M



*Mefano ndika otatu mono Obazaar puElim. Inima oya li po oyindji naantu oya li po oyendji onkee Obazaar oya ningilwa pondje.*

Moorkambadhala dhetu otu u-vite ngaa otwa thikamena uudhigu. Onke one ookume otatu mu indile mu tu kwathele. Unene omagalikano otatu ga pumbwa shili, opo Kalunga a gandje ashihe tashi pumbiwa metungo lyongerki ye ndjika moka edhina tali ka simanekelwa mo komapipi nomapipi.

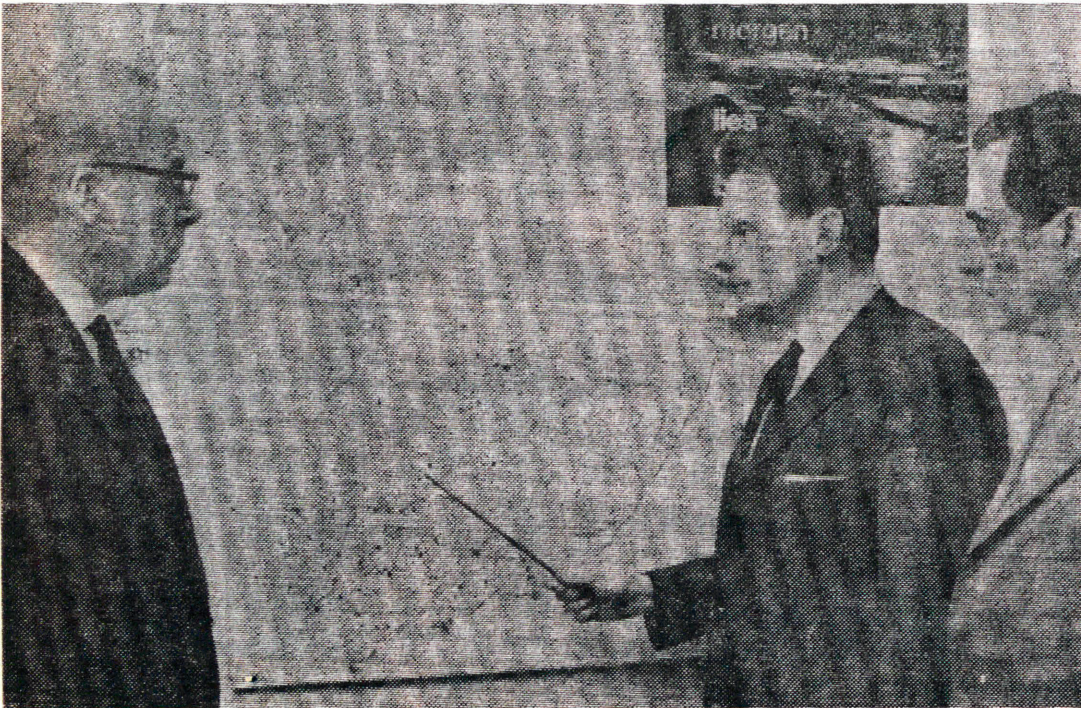
Na aayElim mu li palwe mo-wambo nomUushimba nosho tuu, etungo olya tameka, tu ningeni "omuhangenwa iha sindi." Aakulukadhi yegongalo oya uvanene ya longekidhe natango obazaar ontiyali moka taa ka hondja nokutunga oombindja nokugandja oondjuhwa, omayi, iilya, omakunde nosho tuu. Yo aasamane oya fa itaa ka mwena we, otaa ka ninga sha, opo yi ikuthe ondhino. Obazaar ndjoka Kalunga ngele ta enditha nawa iinima otayi ka kala kaku na we. Nando kokule ihaku thikwa ongula, moorkambadhala dha tya ngaaka, omagongalo otaga vulu okumonena Etumo nenge omatumo iimaliwa. Ookuume mwa kwatha naagandji aayElim, Kalunga ita dhimbwa oku mu pandula.

K. Dumeni

*Silas Iipumbu ta kutha ehekevi lyosamende moshihauto. Ota gandja oshiholelwa kutya, aantu ayehe ye na okulonga ongerki yaKalunga.*



## EHANGANOMBIMBELI LYAASOOMI TA LI TEKULA OMULUNDULULI GWOMBIMBELI OMWAFRIKA



*Aakuluntu yOmbimbeli hangano lyokuSoomi ndyoka tali humbata okwiilonga kwa Asser Lihongo. Okuza kolumoho: Omumbisofi omukuluntu Martti Simojoki naasitagongalo Esko Rintala na Niilo Lampi.*

Ehangano lyOmbimbeli lyaaSoomi, ondyoka lya kala omusilishimpwiyu nomutaandelithi gwOmbimbeli muSoomi okuza komumvo 1812, olya tokola omumvo 1965 okwiindjipalitha natango iilonga yalyo okuyakula etaandelitho lyOmbimbeli miilongo yomuAfrika nomuAsia wo, ngomahangano gOmbimbeli taga ningi momavi ogendji ngaashi muNorweë nomuSwitserland. Oshilonga shimwe tashi pumbiwa ngashingeyi osho okutekula omusitagongalo gumwe gwomuSWA, Asser Lihongo, muBirmingham muEngland, a ninge omulundululi gwOmbimbeli.

Omusitagongalo A. Lihongo a valelwa kOkavango, koshitayingerki shimwe shomOwambokavango. Momagongalo gongerki ndjika yOwambokavango tamu popiwa omalaka gatatu. Melaka limwe, mOshindonga, omu na Ombimbeli ayihe, mOshikwanyama Etestamendi Lipe nomusitagongalo Lihongo ta ka pewa oshilonga oshinene okulundululila mOshikwangali Etestamendi Epe tango, pamwe komeho Ombimbeli ayihe wo. Aantu mboka taa popi elaka ndika, oye li po lwo 50,000.

Ehanganombimbeli muSoomi opo li mone iimaliwa okukwatha oshilonga shika nosho wo iilonga yilwe ya tya ngaaka muAfrika, tali gongele ngashingeyi aantu m boka ya hangane okugandja koshilonga shika, tashi ti "Ombimbeli yimwe momwedhi"-ehangano. Aantu yehangano ndika taa futu omumvo aguhe nenge shi vule omumvo gumwe iimaliwa yontumba momwedhi kehe moshiketha shoka shokutaandelitha oombimbeli, notaa pewa okafo taka hokolola ehumokomeho lyoshilonga shoka. Omukuluntu nomuwiliki gwoshilonga oye omukuluntu gwEhanganombimbeli Martti Simojoki, omumbisofi omukuluntu muSoomi. Sigo ngashingeyi omagongalo 175 muSoomi ga hangana mehangano ndika okukwatha oshilonga shokulundulula oombimbeli.

Ombimbeli oyo embo lya hokiwa muuyuni auhe. Pethimbo lyomumvo nguka Ombimbeli ayihe nenge omambo gi ili nogi ili mugo momalaka 1270. Osho wo Ombimbeli nenge omatestamendi nenge omaevangeli taga taandelithwa omambo oomiljona 80 momumvo kehe. Ihe eindjipalo lyaantu muuyuni omumvo kehe oomiljona 65, onke ano ando etaandelitho lyOmbimbeli nali koke wo ngaaka.



Asser Lihongo

### A YI MUZAMBIA



Seblon Ekandjo.

Omusitagongalo Seblon Ekandjo, Tshandi, okwe ki ilonga muZambia, nale Noord Rhodesia. Okwe ki ilonga uunongo wiinyolwa yuukriste. Oskola yoyene oya tameka nale muJanuali, ihe Ekandjo okwa tokelwa omolu oombapila dhondjila inadhi uthwa mbala kepangelo. Ngashingeyi ezimino lya gandjwa nokwa yi mela lyondjila. Omusamane T. Pentikäinen, oye e mu thindikile mOvenduka, moka ta ka ya nondhila sigo kuZambia.

Enongelo lyomoshilando Kitwe muZambia ohali ithanwa "Africa Literature Centre." Omo ta adha aanskola ooyakwawo ya zi koombinga noombinga dhaAfrika nopalwe. Omo mwa putudhwa nale L. Shemuvalula uunongo wiinyolwa nosho Josef Auala moka i ilongo uufaneki naishewe K. Dumeni sho a yileko koshigongi shaawiliki yaagundjuka.

Meme Maria Ekandjo nokanonamati kawo Elon oya thigala manga kuTshandi. Oskola yawo tayi hulu muDesemba nuumvo. Otatu mu halele eilongo ewanawa tali tungu oshilonga shiinyolwa yuukriste mongerki yetu.

### OSHANGE YA DHIPAGA OMUNTU

ROME. - Oondokotola yatatu oyapangulwa nehameko, oshoka oya pewa ondjo sho ya tanda omuntu mela etaa dhimbwamo oshange. Oshange ye eta oshiponga mela nomuntu asi ngaaka.

## OYENDJI OYA SA

Karatsji (Pakistan). - Oshifo shimwe sha hokolola kutya, muPakistan aantu 1,000 oya si moshilando shimwe. Oya si komukithi ngoka hagu ithanwa "Pokke" Miilando ishewe yilwe mwa kundandwa eso ndika.

## ETOFA PAMWE TALI LUNDU-LUKA MEDINA

Pamalundululo eeveta daSuidwes, nopafaneko lomushamane S. von Bach, onhele yoifitukuti oyo hatu ti Etofa, oyo ku ka lukwa komesho Eto sha National Park. Etofa moshingolo paife olo Etosha Game Park.

Eengaba donhele oyo tadi ka lundululwa nde itamu ka pitikwa mu lifwe ile mu longwe sha, okuninga osho sha tokolwa kovawiliki vonhele.

## OKULONGELA KUMWE NEE-NGERKI DOVALAULE OTAKU PUMBIWA

Ombibeli ipe mOshinama oya pendula ohokwe unene ndele eembibeli 5,400 oda landifwa po nokuli, unene poitukulwa pokati kaWindhoek nomulonga waOranje. Eshi osha popiwa komuhongi J. T. M. de Jongh van Arkel, hamushanga akula wEhangano leembibeli muSuid-Afrika.

Omushamane de Jongh van Arkel okwa ile muKeetmanshoop oweenda nosho muBethania. Olweendo lwaye oli na sha nomalundululo nokushanga Ombibeli. Okwa ti kutya, ombibeli yOshinama oya hafelwa.

Mefimbo lomido 19, moilonga yeembibeli, omushamane Arkel okwa endaenda konyala oilonga aishe mu-Afrika nomuEuropa. Okwa ti kutya, Suid-Afrika ota dulu yo okumona eemhito diwa ngenge ta longele kumwe neengerki domuAfrika. Eshi tashi eta eudeko momaudjuu aa e yadipo "Otu na okuyeulula omakende nomivelo detu, tu kwatafane naAfrika," omushamane Arkel a ti.

## ESHIIWIFO

Ou wa kanifa ekumbafa okudja koshoongalele shovanyasha osho sha ningwa mEenhana eti-5-7/5/67, la kanena moshihauto ile pamwe la dimbuwamo, pamwe ovanyasha ile ovatumwa, ila kombelewa yovanyasha kEngela, mOukwanyama.

Shangheta.

## OMUBISHOFI JOSEFSON A NI-NGA OARCHBISHOP YA SWEDEN

STOCKHOLM - Omubishofi Ruben Josefson ota ningi Archbishop wongerki onghwaevangeli muSweden. Ota i ponhele yomubishofi omukulunhu Gunnar Hultgren, ou ta di moilonga lotete laKotoba. Eshi osha shiivifwa kongudupangeli yaSweden eti-18 laMai.

Omubishofi Josefson okwa hoololwa kohamba Gustaf VI Adolf, ou e li omunashipundi shongudupangeli.

## OOXE VAVALI VA FYA OMEVA

Pretoria. - Ovalumenhu vavali ova li tava yulu eeshi metale ledina "Hartebeespoortdam." Ova li va londa mokawato, vo ve na mo ombwa. Komakuma etale okwa li kwa fikama ovalaule vahapu tava tale.

Ovalaule ova hokolola kutya, ova mona ombwa ya nhuka mo mokawato ya nhukila momeva. Konima yokafimbo okawato oka wanguka novanhu aveshe va ningina momeva. Ombwa vati oyo ya etifa ekandomo lokawato. Ovanhu nghene va ningina inava monika vali. Umwe oye Vorster van Meerhof namukwao oArthur Wilson, aveshe vomuPretoria. Aveshe ova hombola, umwe oku na ounona vane.

## OIFITUKUTI OTAYI KA FENDELELWA

Moshoongalele shomafiku a dja-ko, omushamane umwe B. von Bach, okwa eta efaneko la nyolwa kutya, ovo tava kala va hala oku ka konga oifitukuti molwombelela, otava kala ve na ondjapo youkongo nde otave ke ifendelela. Ngenge ina fendela, ita ka konga vali ombelela. Lungama ngenge to i koukongo pefimbo eli, opo uha ka ye moiketanga.

## OONGANGA DHA ZI MUBRITTANJE

Onkundana ya zi muJohannesburg otayi ti kutya, oonganga 100 dha zi muBrittanje, odha kutwa kepangelo lyaSuid-Afrika lyokupanga opo ya kwathe miilonga yokupanga aantu moRepublika.

## OKANASKOLA KA SI

Kaapstad. - Okanona okakadhona oka li taka zi koskola ku uka kegumbo. Mondjila konima yako kwa zi oshihauto she endelela. Oshe ka lyata noka sile mpoka. Oko okatiligane kedhina Lynette.

## ORADIO YEVANGELI MUADDIS ABEBA, ETIOPIA, OYA TEMBUKILA KUGENEVA

Geneva - Etembukilo lEtumo leudifo levangeli moradio, olo la kala nale muAddis Abeba muEthiopia, o- la ningwa muMai neudo. Omukulunhu woshilonga shekuno levangeli moradio okwe shi popya kutya, etembu otali eta eehenokomesho moilonga yoradio nawa mekwatafano nongongahangano yovakwaLuther.

Dr. Sigurd Aske, omukulunhu, okwa tembulila eembelewa daye kuGeneva okudja kuEthiopia, oko da kala nale. Etumo levangeli otali tumwa yo muHong Kongo nomuTokio. Eli olo eehenokomesho moku- kwafa omaudifo meengerki.

## KOTOKA WAA KALE NIIMUNA OYINDJI

Opa ningwa oshigongi mOvenduka tashi kundathana iikwambelela. Omusamane gumwe R. Derks okwa ti kutya, aaniimuna oye nokukotoka, yaa kale niimuna oyindji yo itaa yi paluthwa nawa. Iimuna oyindji otayi ku pe omukohongo ogwindji, yo ito yi ondodha nawa shili yi ku pe ando iimaliwa oyindji ngele tayi landithwa po.

## OMINISTELI MUSUIDWES

Oministeli yotete yaSuid Afrika, omushamane Vorster, opa fane- kwa ta talelepo Suidwes 19 Jull neudo. Ovakulunhu vamwe muWindhoek otava longekida oku mu yakula.

## OKWA LONDWELA KOMBINGA YONDJALA

Omushamane W. C. du Plessis, ngoloneya yaSuidwes womuWindhoek, okwa londwela ovanhu omafiku aa kutya, nava lungame oshiponga shondjala shiha hange Suidwes ngaashi shi li keembinga mounyuni. Okwa tumbula kutya, oshiponga shinene mounyuni osho ondjala. Ondjala ngenge ya hange oshilongo, otashi dulika i shi hepeke fiyo omido 10 nde itashi kolo. Ota ti okwa hala ovakalimo aveshe vaSuidwes va longele kumwe, va hepulule oshilongo shavo, opo tuha hangike koulumbu wondjala, ngaashi tau hepeke oiwana imwe keembinga neembinga dounyuni.

## VAHAPU OVA PYA

Brussel.— Opa hokololwa kutya, ovanhu ve fike 380 ova fya va pila mofitola imwe yepangelo, oyo ya lungwinapo shekesheke. Omidimba dihapu oda lungwinapo filu, dinini odo da yokolwa momute. Oshiponga eshi vati osho shotete sha ningwa nepangelo kali shii oshike sha eta omundilo.

*Efraim Kamwigo, Windhoek,* ote tu pukululeni atuheni ngeyi: Inamu tukana we! Tu kotokeleni omalaka getu! Elaka hatu li hambelitha Omuwa, ihe oyo hatu li tukitha aantu ya shitwa ondjelo ya Kaluga. Kala we li kotokela.

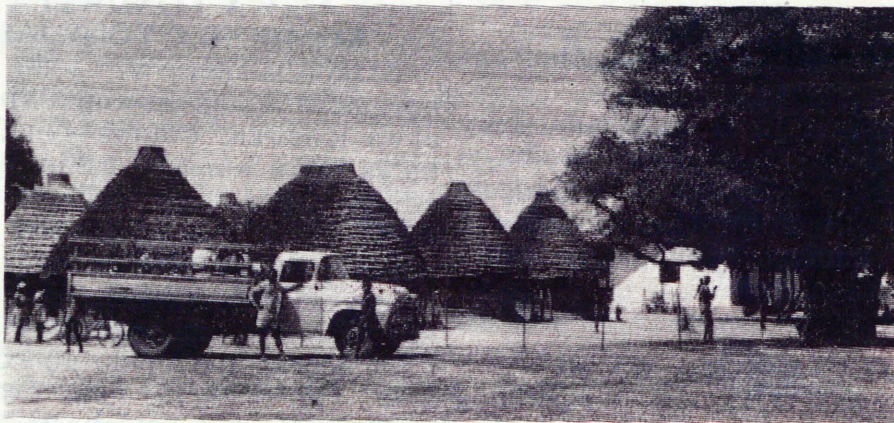
## EPANGO LYIIFUNDJA

Muuyuni mbuka tatu ti owehu-mokomeho natango tuu omu na aantu mboka ka yuuvite ko natango notaa zimine iinima yiifundjalela mbyoka kwa li yiitaalwa noya longithwa kumboka inaaya thika metonato. Unene kombinga yokwiipangitha.

Onda kumithwa kehokololo lye-pango limwe tali longithwa ngashingeyi nolyiitaalwa koyendji, pamwe ongoye wo we li itaala nenge we li pangithwa nokuli. Onda yemata unene sho nda mono aavu yaali yi-yaka mOnasaresa yokOnayena omolwepango ndyoka, gumwe a si nokuli.



KOnambutu nge wa yiko, oto adha omupangi meme Rebeka. Mefano tamu monika oshipangelo shOnambutu. Sha tungwapo komusamane Antonio Max, ngoka a tungupo wo Ongerki yOnambutu. Omupangi meme Rebeka ngoka e nokaspela kuupangi, osho e hole ookundathana



*KOmbalantu ou shiko tuu? Efano ndika olyoshipangelo mOmbalantu.*

Omukwawo okwa galuka e li ngaashi a yile nota pangwa natango TB.

Epango aniwa oli li ngeyi: Omuntu te ehama mela. Onganga tayi ithanwa notayi pe omuvu ongodhi ete yi nina mumwe nomeya. Onganga tayi shuna kegumbo ya yalula omasiku, opo yi galuke yi kuthe mo ongodhi ndjoka ya ningi omasiku mompunda yiikulya, moka hamu yi iikulya kehe nohayi piti mo pamukalo gweshito. Onganga sho ye ya otayi shata omuvu mela lopomuti-ma etayi thipi nomulungu tayi hi-yile mokandooha etayi ti: "Taa, owa li nuuzigo mela wa tulwa mo kaantu aakweni owo mbo u li kongodhi." Ote ti: Oshili ngaa owii taala kutya, ongodhi ndjono ya ningi omasiku mela oyo ya kuthwa mo? Ka kwa li ho yi kiihwa? Moonyata owa tala mo? Mokana konganga owa tala mo? Omuholike taa! Ongodhi ndjo wu ulukilwa mwati yi na uuzigo, oyeende mokana konganga na sho wa tala, oye gomAawambo ta vulu okukutha oshinima mela lyomuntu, momandjandja nenge mompunda yiikulya? Ongolo ayike hayi shi ningi ihe oyo ndjoka ye shi longwa. Nesiku ndyoka tayi kutha sha mela lyomuntu oha yi shi ningile moshitandelo moka mu na uuyogoki kaku na we. Ngele ya mana oshilalo ohayi shi hondjo nomuvu ota ningi omasiku a lala. Omiti dhoowenda nodhokunuwa komuvu ngono kupula. Aapangi otaa matuka ethimbo alihe tashi ti: Opwa ningwa sha tuu shili.

Aamwameme muJesus Kristus, Owambo oya kundukidhwa kiipangelo iinene niishona go omakwatho ga yela nogoshili gokolutu nogokomwenyo otaga monika miipangelo. Onke ano ngele to alukwa inda mOshipangelo. Yamwe taa ipopile itandi yi koshipangelo, oshoka ofuto kayi po. Ongiini waa wete ofuto yoshipangelo ngoye to mono yokuya konganga yOshiwambo? Moshipangelo oto pewa omiti ko 20c nenge to pewa owala waa na ofuto. Onganga yOshiwambo otayi ku pe ngaa omiti ngele u na 50c? Aaholike otamu fundjwa ashike ne tamu ekelehi eliko lyeni kekwatho inaali yela kali shi lyoshili. Rom 16:18-19.

Loide Mueendeleli.

"OMUKWETU" oha zi mOniipa— Omukuluntu gwoshifo/ Hoofredakteur: Omumbisofi Leonard Auala, amushanga gwoshifo/ Redakteur: Leonard M. Shemuvalula, Oniipa, Pk. Ondangua.— Ondando komumvo mOwambo 60c, mUushimba nOkavango 80c. Oofuto nomambestelo naga tumwe kOmukwetu, Oniipa, Pk. Ondangua.— Moka hashi nyanyangidhwa: FINSE SENDINGDRUKERY, OVAMBOLAND, S. W. A.