

OMUKWETU

Oshifo shOngerki onkwaevangeli paLuther yomOwambokavango / Die Tydskrif van die Evangeliese Lutherse Ovambokavango Kerk

No. 8

APILILI

1967



Aanaskola moskola yokutunga oontungwa kOlukonda mOwambo. Omafano omakwawo tala kependja etitano.

OKUKUNDAFANA NAKALUNGA MEILIKANO

Mat. 6: 5-8

Otwa lombwelwa: Indileni nde tamu pewa, kongeni nde tamu mono, kongholeni nde tamu yeululwa. Katu nokumwena, osheshi ou ta indile ota pewa.

Nge hatu indile, tu nokukotoka tuha kale ovafudime: Inamu kala ngovafudime. Inamu popyaana mu kale nounhwa. Inamu tuwalala nde inamu kala ngovapaani. Inamu kala mwa hala okupandika nde inamu indila noufukulume nolwisho.

Didilika, Jesus a shiiva omadiladilo omeni lomunhu nofimbo ina indila. Oye a shiiva ashishe omunhu te shi pumbwa. A shiiva yo oyo tai xutula nde tai kanififa omunhu, osho a shiiva yo aishe tai xupififa omunhu. Jesus ite tu pe ngaashi hatu indile ndelene ote tu pe ngaashi tashi tu wapalele

ongomudalakadi ta yandjele ovana vaye.

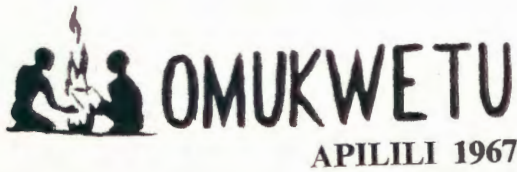
Dimbuluka eilikano lomufarisai lounhwa, olo itali eta sha ndelene olo tu noku li angala shili. Okwa fikama motembeli a indile. Ote lidenge ponhulo ta ti: Ame ondi li nawa kandi noushima. Oiyandjwa yeongalo ohandi futu. Ohandi yandje oitimulongo. Ongalo ohandi umbu. Eeveta deongalo ohandi di wanifa. Kandi fi omulunde nomukoloshi. Inandi fa omuteeloni ou a fikama apa. Omufarisai oku udite ta nyika nawa, ndelene koshipala shaKalunga oye omufudime nounhwa. Omatimba aye ke a wete nde inaa dimwa po. Ina-tu indilanga ha.

Tu indileni ngomuteeloni. Ou inadula okutala pombada nde ke nee-

ndjovo dihapu meindilo laye. Oye ta tumbula nondaka ya nyika ounghone noufiye: "OMWENE FILENGE ONGHENDA, OSHESHI AME OMULUNDE." Oulunde waye owo tau mu fininike nde a hala Jesus e u dimepo. Muye kamu noufudime nde ita holeke sha. Elaka limwe alike e kwete nde tali tu wapalele yo "OMWENE FILENGE ONGHENDA, AME OMULUNDE." Meindilo eli Jesus a dimapo omatimba aye. Medimepo lo-matimba omo tamu twiyuka omanangekonoupuna mahapu. Mulo eemhumbwe dopalutu yo otadi kanduka po. Omolwaasho taku tiwa: "TETETETE KONGENI OSHILONGO SHAKALUNGA NOUYUUKI WASHO, NENA OTAMU I WEDELWAKO."

M. L. Sh.

OONTOKOLWA DHEPANGELONGERKI



OMPUMBWE YOMAMBO GAANONA OTAYI THIMINIKE

MuAfrika ngashingeyi, ngaashi unene mOwambo, aakriste otaa pumbwa okugalikana nokukwatha aanona ya hokwe ongerki. Koombinga muuyuni oyendji oya taamba oshimpwiyu shika. Unene omambo gaanona aashona omape otaga pumbiwa natingo, ga nwethemo aanona muukriste.

Kape nomambo gaanona yoshikunino. Kape na wo omambo ogendji mOshiwambo goongundu dhaSUB. Ngele pe nembo, shila ekulukulu ashike. Omambo omape ge nomafano noohapu dha yeleka aanona, otaga pumbiwa unene. Okugalikana Kalunga a pendule ombepo yokunyola omambo mAawambo, pa holoke ekwatho. ITO MONO NANDO OKANONA KOSHUKUNINO MOWAMBO KE NEMBO LYAKO LYOMUTHIKA GWAKO. Nonando aanona aashona ihaa lesa manga, ihe omafano ngele ge li membo pamwe nomafatulo gaalongi, otayi longo okanona oshindjishindji. Oshoka omunona nando omushona, ngele ta li naantu taa litha oosindo, naye na pewe okasindo ke kokulitha.

Iigongi yomambo yongerki nepangelolo nosho epangelongerki wo, ando naga kwathe moshinima shika. Ondi uvite aanona yetu oye tu tongolola, tu ya ningile sha mpaka.

ETSEYITHILO

Aapangi aaholike mOwambo nomOkavango, otatu mu hiya koshigongi sheni kOnandjokwe 26-29/5/ 1967.

Galikaneneni oshigongi. Omuwa ota ti: "Ileni kungame, otandi mu pe evululuko."

Aanandjokwe.

"Tala ongame ndi li pamwe nane omasiku agehe!"

1
Omumbisofi a hololele Epangelongerki enyanyu ndyoka Kalunga e li tu pe mongerki yetu, sho pwa tungwa egumbo epe lyaambisofi yongerki, nepangelongerki olyi ithanwa ngeyi li thindikile omumbisofi megumbo epe.

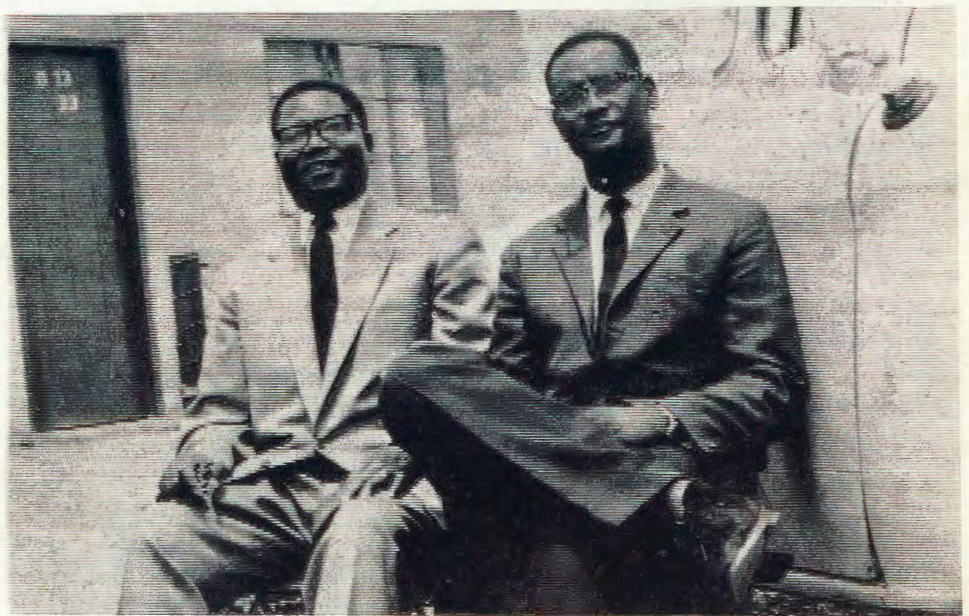
2
Megumbo epe lyaambisofi yOngerki Onkwaevangeli paLuther yomOwambo-kavango, mwa gongalele aashiinda, aatumwa naawambo okuhambelela Kalunga omolu egumbo lyaambisofi yOngerki yetu ewanawa, ndyoka lya tungithwa iimaliwa mboka tayi ka gandjwa kOngongahangano yaakwaLuther.

3
Epangelongerki oli uvite epandulo okutaamba omusita Abisai Shejavali a kale omulongi mosikola yuusita muPaulinum. Epangelongerki otali pandula memengerki omolu ompito ndjika A. Shejavali e yi mono okwiilonga, sigo a adha ograde yuuteolohi. Epangelongerki otali halele omusita A. Shejavali oonkondo newiliko lyOmbepo yaKalunga moshilonga shika e shi pewa shokuputudha aasita yetu, ngaashi Epangelongerki lye mu langeke ko nale.

4
Epangelongerki olya taamba nepandulo omagano ga gandjwa ku kuume ketumo gumwe muSoomi, edhina lye Aili Havas, okuyakula oshilongatomo shongerki, ooranda 50 dhoshiCanada - pooranda 30 niihupe. Omagano ngo-ka oga etelelwa ku A. Shejavali.

5
Epangelongerki olya taamba nepandulo iimaliwa ya gandjwa kookuume mu Dusseldorf, Duitsland omolu okutungitha ongulu yoshilonga shomaagundjuka R1796.43.

6
Omwevangelistesita gwOngerki E. Angula a hololele Epangelongerki epandulo nenyanyu lyomoshilonga she. Unene sho pe na ookuume taa si oshimpuyu omolu oshilonga she. Unene sho pe na ookuume taa si oshimpwiyu omolu oshilonga shOmuwa. Ngaashi ookuume muSoomi ya tumu otenda yokugongalela mo iigongi yomauvitho naatumwa yamwe mboka ya gandja omolwoshilonga sheuvitho lyevangeli okashina kokuulukila omafano keku- ma, ka longithwe ku E. Angula. Epangelongerki oli uvite epandulo enene oongundu dhookuume ketumo sho dha hwama shili mokukwatha oshilonga shika.



Omushamane Jason Haufiku naStefanus Iteua, Windhoek, otave tu kundilepo

EFUMVIKO NOONKALI DHAKATAU

Ongundu onene oya ngundumane nene pOniipa eti-23/3/67, ya tondoka onkugo yehulithondjenda lyaKatau. Omusamanetumwa Katau okwa hulitha oondjenda dhe meti-22/3/67, manga nokuli a li meilongekidho yo naa-negumbo lye ya ka fudhe po kuSoomi.

Ngame wo onda thikiko nopeha "LYEHANGANOTUMO LYAANA-NGESHEFA AAWAMBO YONGERKI ONKWAEVANGELI YOWAMBOKAVANGO" moka nakusa Katau a li oshilyo sha simana.

Mehangano ndika nakusa Katau okwa li a pwilamo. Okwa li omupe-nda mokuganeka oshikaha she noku eta omadhiladhilo omape moshigongi omolwoshilonga shetumo. Ehangano ndika olya totwa po kaanangeshefa aakriste noli li meni lyongerki. Elalakanano lyehangano ndika okutaandelitha oshilongatumo kwaamboka inaaye shi tseyo natango noye li meni lyongamba yongerki onkwaELOK. Omolwoshilongatumo shika, Katau okwa kala nokutumbula ngeyi: "Tu ulumikeni oshilongatumo shetu shi thike

mbala kaamwameme ye li moluhepo, oshoka etango olya toka." Ngashin-geyi ke po we. Kalunga e mu zim-bula. Omudhimba gwe ogwa fumvi-kwa ashike momaendo gegongalo lya-wo mOniipa mumwe noonakusa Aa-wambo. Oshoka naye okwa li keehe na ontondo.

Nohugunina medhina lyehanga-notumo lyetu, ote gandja omuseleka-dhi noothigwa meke lyaKalunga mo-ka tseni atuheni tatu imonene etala-leko nehekeleko mevi ndika lyuundje-ndi. Eimbilo 336.

Leonard Mukwiilongo.

OYE TU THIGILE OSHINDJI

Otatu nyengwa okuhupula iilonga nomayakulo agehe twa li twe ga yakulithwa komusi Katau. Omusama-ne nguka otu wete natango iilonga ye yopondje yi li aluhe momemo getu.

Tate Hartikainen oye a li omu-nyanyangidhi ngaashi twe shi tseyo nawa. Okwa li a thikama moshuuvithilo, tu tye, shongerki yetu onkwaeva-ngeli yOwambokavango. Mokuuvitha kwe okwa nwetha mo oyendji nokwe ya tula wo moskola yokukala omu-thika pamwe naye moshuuvithilo sho-ka, opo ya yakule aamwayina ngaaka niilongauvitho lyawo, itatu puka nge-le tatu ti muSuidwes alihe nosho pa-lwe wo, ngaashi oye mwene, nakusa Hartikainen e shi ningi.

Omusamane nguka okwa li omu-tungi, ihe ha gwomakumangulu ageke,

aawe. Oye wo a li omutungi nogwo-mwenyo. Olwindji okwa lalakanene ombili yi pepale pokati kaatamanani. Shika okwe shi ningi unene mumboka a longo nayo ngele komatungo nenge mOshinyanyangidho moka a li omuwiliki.

Okwa li wo omudhigininithi gwo-magumbo. Okwa li a kala mokati kaa-mboka a longo nayo ayehe ongohe no-yana. Okwapukulula aluhe nokuulika shoka shoopala naashoka shaa opale-le. Okwa gandja oondunge mpoka a pulwa. Okukwatha palutu e ku tupa, ka-tu shi ku ku tumbula. Haartikainen (Katau) okuume kaafupi nosho wo kaale. Oye okwa kwatha koombinga odhindji. Ngele tatu tumbula dhi-mwe dhomudho: Okwa gandja ekwa-tho lye kaanangeshefa, kaanamapya, kaanamagumbo, ngaashi nde shi popi

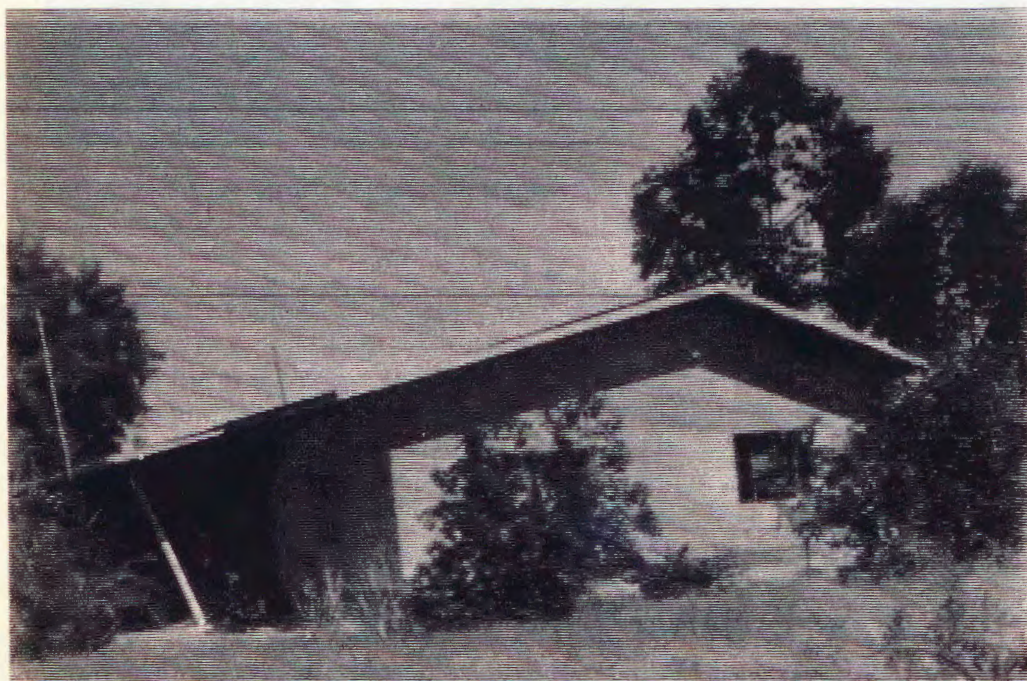
metetekelo, kaasamane, kaakulukadhi, kaanona nosho tuu.

Olwindji onda kuminwa onkalelo yomusamane nguka pamwe negumbo lye. Efolo lye wo oye omuntu ngoka hu uvuko mbala omadhiladhilo ga-shaangoka te ya kuye. Oye pamwe nomusamane gwe, oya kambadhala o-kukwatha oshigwana shetu Aawambo pamagano ye ga pewa kOmuwa. Ngele pwa holoka uupyakadhi mo-shigwana, oyu uvu ohenda pamwe natse, oya yolo noya lili wo pamwe nAawambo. Oya gandja ashihe sha-wo meyakulo ndika mepya lyaKalu-nga ngaashi ye shi tuminwa.

Oondunge nuunongo waa nondjoo-lola ye u tu pe noye u tu thigile o-tau etele oshilongo shetu eyambeko ngele tatu u dhiginine noku u longi-tha.

Aanegumbo lyaKatau, efolo no-yana, otatu ya halele okukalamwenyo okuwanawa mondjila yawo yokushu-na nosho tuu mevi lyaSoomi taa ka kala mo. Kalunga ne ya pe natango egumbo li nelago nohali pangelwa ketilokalunga ngoshito.

M. Amkongo.



Ongulu ndjika oshigumbo shanakusa Hartikainen pOniipa. Oyi li molugumbo lwOshinyanyangidho.

OFIYO YA TWIKWAMO MUSUID-AFRIKA

Johannesburg. - Okutwikwamo kwofiyo yadja momunhu a fya kwote, okwa ningwa omafiku aa moshipangelo shomuJohannesburg.

Omupopinghundana moshipange-lo osho okwa popya kutya, omunhu ou a tulwa ofiyo, okwa li ta vele ou-du tau nyengana. Okwa ninga eemwe-di nee a tulwa ofiyo imwe yopau-nghulungu, fiyo osheshi nee a tulwa ofiyo ei yomunhu. Ofiyo oyo a tulwa, oya dja momunhu opo a fi mafiku aa. Vati nakutulwofiyo oku li ngaho nawa.

EONGALO ONHELEIWA NEHOKOLOLO LALO

Eongalo eli ONHELEIWA ola dalwa kongerki Onghwaevangeli pa-Luther yomOwambokavango eti-6 Januali 1966. Oli li mOuninginino wOkwanyama. Oli na ovakwaneongalo 2145.

Ngaashi eongalo lipe li neemhumbwe dihapu, osho yo eli li li. Nandi tumbule eemhumbwe dinene deongalo eli di dule dikwao odo:

1. Ongerki,
2. Oiyuma yOuvalelo Uuyapuki,
3. Oshiyaha sheshasho,
4. Omalapi oalutali melongelokalunga,
5. Oshitaafula sheenomeli melongelokalunga,
6. Eenomeli doovene kadi po,
7. Oshitambe - Oshihako sheongalo, omolwoikolekwa yeembapila di lili nadi lili deongalo,
8. Novaudifi vawana okutunga eongalo pamhepo.

Eongalo ohali ningile elongelokalunga mokangulu kanini ka tungwa nale 1937.

Mokudiladila ongerki, eongalo la tokola okwoongelela etungo longerki oimaliwa. Omudo aushe la ongela R511. 00 nokuli.

Eongalo ola humbata oisho ihapu oshita. Manga tali ongelele ongerki, ola tunga okaanda kekuma omolu oilya yeongalo. Ola tunga yo ongulu yoshihakulilo omolu oukokule walo noihakulilo. Okangulu komeumbo lomufita oka tungwa neulumo linene. Muko omu na okanyangangalo keyakulo lonena.

Eongalo la mona yo omakwafo mahapu, a dja kookaume. a) Okangudu ketumo muJappila (eongalo limwe kuSocmi) ka tumina eongalo eli ongedjo ipe. b) Eongalo lokuWalvisbaai la tuma R10. 00

c) Eongalo loku C. D. M. R 4. 00

d) Eongalo lokuTsumeb R17. 37

e) Ovamati vaWindhoek R 3.88

Kumwe R35. 26

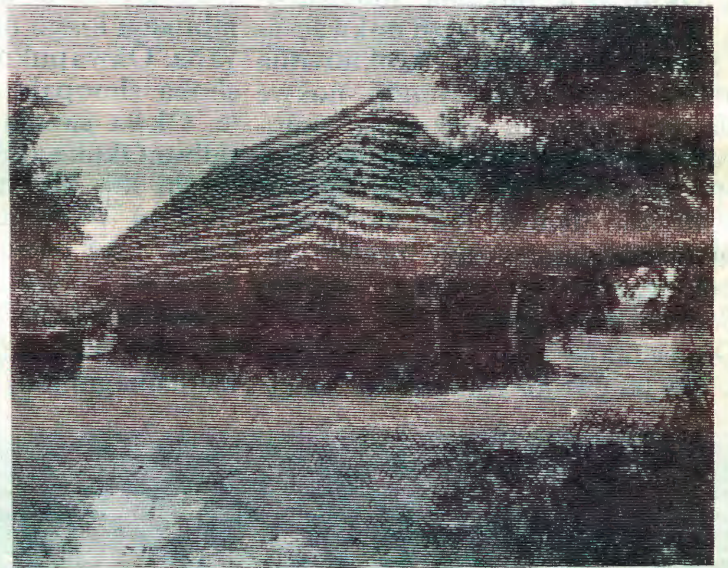
Oilonga ei oya longwa nexwamo pefimbo eli loutalala meemwenyo dovakriste nomhepo ya vahapu ya fyongone. Unene ovakongi vongobe va Haivinga va Nashitai shiyala, va ekelashi oiti. Ndele Kristus nahambelelwe eshi e limonena ovayambididi ovakwaneongalo, ovo tava kondjele Omwene wavo neongalo laye.

Ovakwaita nye tamu diki eongalo laJesus pamwe nafye: Meekulu L. Lindström novaJappila, Rev. J. Haufiku novaMbaye, Rev. H. Shongolo novaLange, Rev. M. Hauuanga novaShomeva naEv. M. Kaijamo novamati Ovavenduka, omwa umba onghwuo! Twe mu pandula ta! Eongalo ola denga kumwe omake olupandu. Ovamwene vomeongalo mwe va twomukumo. Vahapu va yambuka okukondjela eongalo !Omwene. Omwene ne mu yambekele eenghono defiku keshe Nomakundohaleloyambeko Fili. 1:6

Mikael Nengola,
Omufitaongalo.



Oshihakulilo sha tungwa meongalo Onhelelwa 1966.



Okaanda kekuma ka tungwa meongalo Onhelelwa 1966.

TO SIMANEKE TUU OMUKULILI?

Aamwameme aaholike muJesus Kristus, mpaka nda hala tu kundathaneni nenge twii ipuleni tu tyeni: "Elaka lyandje ohali simanekitha tuu Omushiti?" Ano kehe gumwe sho wa pewa oshilyo oshinene ngeyi nosha simana oho shi longitha ngiini, nenge ohandi shi longitha ngiini? Olwindji otwa longitha omalaka getu mpoka inapu opala. Onkee oku na etumbulo tali ti: Shaa shoka to shi longo, indila Omuwa Jesus e ku pe oondunge mokulonga oshinima sha tya ngaaka, u pule ngele oshoopalela tuu koshipala shOmuwa. Sha fa sha hala kutya, inatu longitha elaka manga inaatu pula Omuwa. Dhiladhila tango to ti: ngashingeyi onda simanekitha tuu Omushiti nenge onde mu shekitha? Omuwa gwandje sho eendjelele komuti gwa shigakana, elaka lyandje olye mu sheke nenge ongiini?

Otse tuu twa indile ngeyi: "Omuwa, dhimbulukwa ndje nge to yi moshilongo shoye." Nenge twa ti owala: "Okwa li ha kwatha aantu na ze ko komushigakano."

Aamwameme aaholike, otse twa hepa shili koomwenyo dhetu ngele tatu sheke okusa kwaJesus komushigakano. Onkee ano tu indileni Omuwa Jesus e tu pe oshihako shOmbepo gwe Omuyapuki moomwenyo dhetu. Tu tsuweni omukumo keso lya tya ngaaka, inatu li sheka ihe tu hedhe pekota lyomushigakano noomwenyo twe dhi yelutha, twa taalela Omushiti.

Anna-Liisa Kadhila.



Oontungwa oombwanawa tadhi tungwa moskola yoontungwa mOlukonda mOwambo.



Omulongi moskola yoontungwa oye meme Johanna Auene. Ota longo aalongwa okutunga omihingo.



Aapangi: Konima oyo Petrina David, Suoma na Linda Nghikembwa nokomeho Hilma Sheehama, Maila Andreas, Eufemia Timoteus na Monika Shiimi.

OMUGUNDJUKA TONATA

Owa tonata tuu? Omugundjuka omukwetu kala wa tonata shaa mpo u li, kotoka omumwameme. Omutondi okwe ku langele posheelo shomwenyo gwoye. Ihe otse otu na oshikandekitho shetu ihaashi pitwa nando ku sha oye Kristus Jesus.

Otwa tseya uuvu mbuka wuulepera, nkene ohau lemaneke nayi aantu. Koshipangelo shokoRuntu oku na aavu yuulepera. Aawambo oye u luku "oshilundu" nenge sha shilwe. Ihe otekisti ndjika ya hala tu tseye uulepera mutse yene na nkene we tu ninga iilema. Oya hala tu valululwe notu shituluke kokukala akuhe ongomukwiilongo ngwiyaka a dhiminwa po oondjo dhe. Ombinzi yaJesus oyo ayike tayi vulu okupanga oshiponga shika hashilwe nando.

Ngame otandi dhiladhila Omuwa ote ya mbala naantu otaa uluma oku mu taamba. Nando naku kale uudhigu, aana ye otaye ya oku mu taamba manga taku tiwa onena. Shimwe ashike tu nokudhimbulukwa, osho shika tu galikaneni opo ya mone oonkondo okwiitaala shili pwaa na omatengauko mokwiitaala kwawo, omolwiilonga yetu sho taye tu tala yaahe tu holele. Oshoka ngele to tala oku na iilonga oyindjiyindji iwinayi mutse aakriste. Oyo otaa yi mependuko omolwetu.

KWATHATHANENI

Pukulula mukweni ngele ta alukwa. Ngele a adhika koshiponga, mu kwatha ngoye shangela mbala kegumbo lyawo u popye ko oshiponga shoka. Ngele a sile pungoye, ino holeka iinima ye, kwatha yi thike. Inamu itongola nando.

Aamwameme aaholike, aaleshi yOmukwetu amuhe, otandi mu kundu nekundo ndika: Joh. 1. 12. Ihe ayehe mboka ye mu taamba, okwe ya pe oonkondo ya ninge aana yaKalunga, oomboka yi itaale edhina lye.

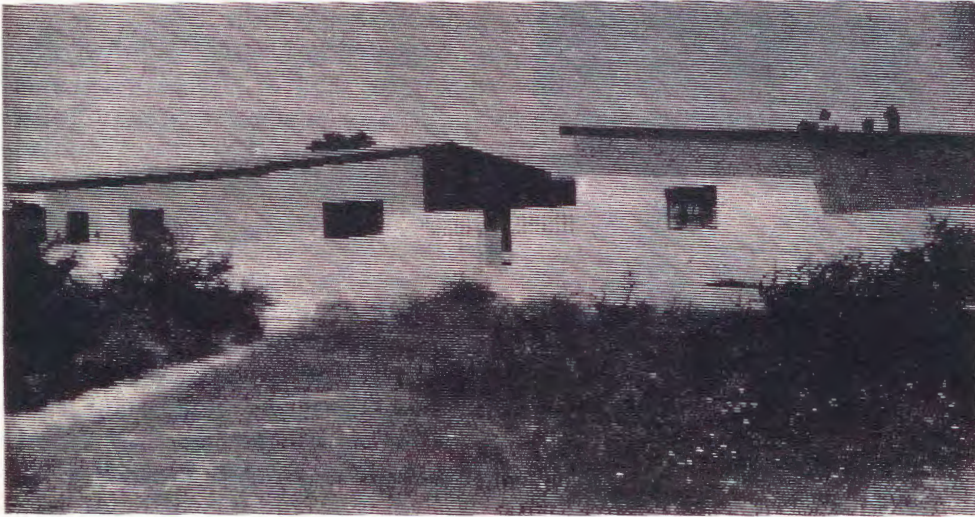
Onkee etha ashihe u shi hole konga tango oshilongo shaKalunga nuuyuuki washo, nena ayihe oto yi gwedhelwa ko.

Rebeka Shuudifonja.

EDINA JESUS KRISTUS

Edina laJesus Kristus ola finda aishe! Ou e li medina eli oye ota findana yo. Oshiwana sha mena medina laJesus Kristus, otashi findana mounyuni ou nde unene mounyuni tau ya.

OMAGUMBO GONGERKI



Mpaka ishewe egumbo lyomumbisofi L.Auala. Olya tungilwa aambisofi yongerki yOwambokavango. Egumbo enene lya tungwa oshingololela. Nakusa Katau oye a wilike miilonga yomatungo ngaka. Iimaliwa tayi ka za kongongahangano.



Mefano ndika otu wete egumbo epe lyomusamane Petrus Shipena pOniipa. Egumbo enene nomala omanene ogendji.



Aalumentu mboka ya tungu omagumbo ngaka, oya telekelwa onyama nontaku nampaka otaa li iikulya yawo.

EUVITO LYEGONGALO LYAANDJAWO

D. Shetunjenga okwa valwa 1919. A kala mosikola yaamati mOmbalantu tango. Okwa kale ow natango moseminari mOnguediva. A tameke uulongi omumvo 1960-64. Omumvo 1965 a ningi omulongwa mosikola yelongekidho lyuusitagongalo mOtjimbingwe. Oye a kala omwiinelwa megongalo lyaandjawa. Onke egongalo olye mu pele oshimpuyu a kale omukuluntu gwongalo nomudhiginini gwiimaliwa yetungo lyongerki okuza 1963-64. A pukulula nokwa kumagidha ayehe nokwa tsomukumo nokwa talaleke aankundi meitaalo. Onke egongalo alihe olya kala noluhodhi lwaa nongamba ethimbo kehe.

Oye a yi moondjokana eti-24. 11.57, pamwe nomuyalekwa gwe Taimi Nampola. A thigipo oothigwa uukadhona uyali Magano naNdapeua. Kalunga na kwathe oothigwa, oshoka oye te dhi hupitha ngohepele. (Ps. 25:9.) Peha lyegongalo,
G. Amupolo.

OHOLE YAKALUNGA

Iilongahupitho yaKalunga oyo iinenenene, onke yi nokuhokololwa onofu na nofu. Iilongankondo yaKalunga nesimano lye oli nokutseyithilwa mokati kiigwana ayihe. Nomokati kaapagani oku nokuhokololwa omapangelo gaKalunga. Oye awike ta koleke ooha adhihe dhevi, onke ano aantu ayehe niishitwa ayihe oyi noku mu pa esimano noku mu etela omagano.

Ehupitho lyaayisrael nani olyo ehupitho lyiigwana ayihe nolyiishitwa ayihe, nonatango omu na sha shoka shokomeho.

Oye te ya. Oye te ya ta ka pangula evi alihe pauyuuki niigwana ye pa shili.

Hahupitho ndyoka lyomwEgipiti alike li nokuuvithilwa iigwana ayihe, ihe unene uukwaniilwa waMessias ngoka ta hupitha uuyuni auhe, mapangelo lyuulunde nolyomutondi. Ehupitho ndika lya longelwa ayehe, naahupithwa ayehe oyo ye.

Omuhupithi gwaayisrael oye okwa shiti egulu nevi. Oye ta pangele iigwana ayihe. Oye ina hala okuyona po iishitwa ye, ihe ehalo lye ewanawa olyo okukoleka ooha adhihe dhevi. Onke ano ehalo lye ndika lyokuhupitha niilonga ye yokuhupitha oyo yi nokuhokololelwa ayehe, opo esiku lyokuya kwe li longekidhwe ngaaka.

Liina Lindström.

OUNYUNI OTAU TONGO SHIKE

OVAKATOLI NOVAORTHODOX TAVA HANGANA MUSWEDEN

STOCKHOLM: Ongudu tai kondjelele okuhangana nokulongela kumwe kwongerki yovaKatoli noyova-Orthodox muSweden, oya hangana moilonga yopaufita mokuyakula ovatembukilimo nosho moinima ikwao youkriste. Ova hala okulongela kumwe nokuyakulafana nokuyakula eengerki di nehalo okuhangana domuSweden nde pa talika, oyo onghedi tai tungu.

OSHITUKI SHA UMBWA KOHANI

Washington.— OvaAmerika ova umbwa omafiku aa oshituki kohani. Osha umbwa nelineekelo shi wile nawa kohani. Ediladilo lokoshi ololo kutya, komesho kohani ku umbwe omunhu a wileko.

Oshituki shopaife osha ya sha lukilwa omafanoshina okufaneka. Opo ngenge sha wileko, shi faneke nawa oukwatya aushe wokohani. Oshituki otashi umbu omafano kedu novakonakoni otave a konakona nde tava shiiva naana oukwatya wokohani fimbo inava tumako omunhu.

OMUSHAMANE VORSTER MUTRANSKEI

Omushamane Vorster, omuministeli waSuid-Afrika, okwa talelapo Transkei. Elalakano laye kwinya okwa hovelifa oshoongalele shokutota ceveta daTranskei, sha ongala muUmtata. Omushamane Vorster okwa findikilwa kwinya komushamane Botha, oministeli yepopilo nelongo leefikola nokomushamane Abraham, komufala munene wovaKoosa.

Omushamane Vorster okwa kundwa nawa komushamane Kaizer Matanzima. Ediladilo kutya, onghedi yokatongo oyo tai kufa po omaupyakadi movanhu vomaludi mahapu muSuid-Afrika, ola popiwa.

SWAZILAND

Ehogololo lyongundupangelo nomupangeli otali ningwa muSwaziland pomasiku ngaka. Oongundu mbali otadhi kondjithathana. Ndjoka tayi gwini oyo tayi pangele nemanguluko lyolyene otali landula ko.

ENENEPEKO MIILONGA YOOTELEFONA

MuSuidwes omu na omilaina dhootelefona oomaila 36,610, tashi ti omilaina oomaila 20,172 dhu uka moofalama, 12,363 oomaila dhu uka koosasiyona dhootelefona (telefoonsentrale-aansluitings) nosho 679 dhooskepa, dhoondhila nodhoradio dho-private. Shika osha tseyithilwa oshigongi shootelefona nopoosa komusamane W. C du Plessis, ngoloneya gwaSuidwes. Oshigongi osha gongalele mOvenduka omasiku ngaka.

Ngoloneya okwa popi ishewe kutya, epangelo lyopoosa oli na ngashingeyi iihauto yi vule 150, mbyoka tayi longithwa miilonga koombinga dhaSuidwes.

Omachina gotango gokuwilika epopyo lyomotelefona oga kala mOvenduka, sho ga longithwamo lwotango omumvo 1929. Ekwawo lya landulako olyomuWalvisbaai naKeetmanshoop nosho Swakopmund.

Ngoloneya okwa popi ishewe kutya, oondoolopa oonkwawo nOshakati mOwambo otadhi ka mona wo omashina ngoka.

XE YOUNONA 11 TA YAPULWA

BELO HORIZONTE, BRAZIL: Omuprofesoli Alfonso dos Santos, a kala omunafikola a shiivika nawa moUniversiteit yaMinas Gerais, xe younona 11, ota yapulwa muApilili opalongekido lomupapa Paul VI.

Omuprofesoli ou weedula 74, okwa ufilwa eyapulwa komupapa, eshi a xulifa elihongo laye loutheologie noufiloshofi. Omushamane Dos Santos okwe lihongela oufita mefimbo lelihongo laye nde a hala natango a twikile elihongo laye konima nge a yapulwa.

OSHIPONGA SHONDHILA

Oshiponga sha holoka muAmerika sho aantu 23 ya si moshiponga shondhila omasiku ngaka. Ondhila ya li tayi tuka mombanda nopethimbo ndyoka omvula oya li tayi loko. Olwaadhi lwa shela nolwa kwata ondhila. Ondhila ya mbolokotele ngaaka pevi, aantu ayehe ya limo oya sa.

Ongoka iitaala oye oku na omwenyo nando na kale a sa.

EWI

LYEVANGELI

MORADIO

ometa 31

otundi 8. 30 onguloshi

21. 5. 1967.

Okulesha okambo:
"Omona wohamba."

Oukwatatu: omufita Natanael Shinana
Oandaha: omufita Kornelius Ndjoba
28. 5. 1967

Okulesha okambo: "Omona wohamba."
Omaimbilo meekoor.
Oandaha: omufita Filippus Shikomba.



KHAMA MUMASERU

Omupresidente waBotswana, omushamane Seretse Khama, oye wotete wovapangeli ovalaule a talelapo Lesotho eshi Lesotho la manguluka.

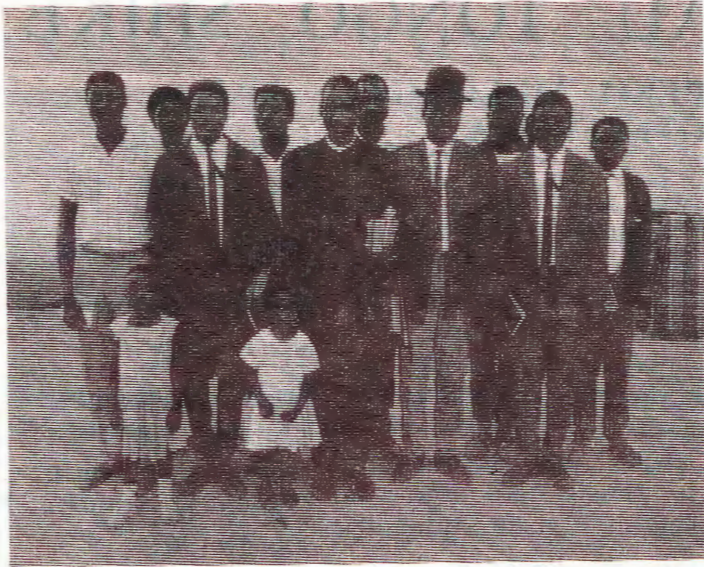
Khama eshi a fika nodila mokapale keedila muMaseru oshilando shepangelo muLesotho, okwa kundwa nefimaneko kongudu inene yovashutuku.

Khama okwa yako nodila yoshilongo shaye nde a enda pamwe nomalenga aye avala nomukulukadi waye. Oministeli yaLesotho, omushamane Leabua Jonathan, ina hangika peumbo. Ovakulukadi nounona omafele ova kunghula nondjila nokutala nokuminika omushamane Khama.

EHANGANO LEENGERKI MOUNYUNI NEIFANO LOUYEVANGELI LISTE

Ehangano leengerki mounyuni (W. C. C.), omudo ou ola hala okutanda velifa oshilonga sheudifo levangeli meengerki eenghwaevangeli mounyuni nokukonga elongelokumwe. Eshi osha tokolwa moshoongalelewiliko leengerki dounyuni muNew York.

Omufitaongalo Philip Potter, ou muJanuali a ninga omuwiliki wehangano leengerki mounyuni kombinga yetumo neudifo levangeli mounyuni, okwa popya kutya, eengerki di nokulongelakumwe meudifo levangeli. Tu dimbulukwe, ohatu longo oshilonga shimwe shOmwene nande twa halakana. Tu efe ehala laye lilongwe nde opo te tu ulikile nghe tu nokulonga nopeni.



Omwevangeliste Fridrik Nghihlwa, Otavi, ota hokolola eudafano nelongelokumwe movakriste mOtavi nde ta ti: Tu kaleni omuko umwe mu-Jesus Kristus.

thwa, omunamitenge dhoondjo te dhi kuthwa, aanaluhodhi otaa talalekwa, aanuulepela otaa yele. Aaposi taa tonata, aanaluhopo taa uvithilwa evangeli. Mboka ye noomwenyo dha nyayika, tadhi aludhwa. MuJesus otu na ashiheshihe. "Ongame notandi dhi pe omwenyo gwaaluhe"

Ngaashi a longo oshilonga shika kombanda yevi, osho a hala e ku longithe sho tati: "Ka tsakanekeni mboka ya senota ne mu ya faalele omeya, taambeni aatembuki, ya peni oshikwiila." Mpaka ta lombwele aalongwa ye. "Ya peni oshikwiila," na "Simon yaJohannes u hole ndje tuu? Litha oonzi dhandje." Osho wo te ku lombwele nonena ngoye ngoka wa tulwa po okupukulula yakweni nomutseyi gwoohapu dhaKalunga ithanena wo yakweni mevululuko ndika opoohapu dhaKalunga, ya mone omwenyo. Jesus ta ti: "Ongame nde ya, opo ya kale ye nomwenyo noya kale ye negwaneno." Ila kuJesus nomusita we opo u mone evululuko. N.Stefanus Mvula.

UHA PANDULA NOVAKE

Onda pandula unene ovamwameme mu li muOranjemund. Oimaliwa mwa kwafa nge eshi ndi li moshipangelo, eshi nda mona oshiponga moshihauto sha kandoma nafye eti- 26/8/66, oya fika. Tate Kalunga ne mu yambeke.

Ohandi pandula yo ovahakuli, va hakula nge nombili nohole. Edina lomwene ohandi li hambelele.

Josua Abraham,
Ohalushu.

Asser Ileni, Transvaal, ota londwele ngaha: Oufiku otau xulu po nomutenya ou li popepi. Tu liduleni oilonga yomulaulu nde tu djaleni oiti youyelele. Tu endeni meenghedi diwa ngaashi omutenya. Ha nokufuka nokukulwa nokuhola oipala nokukala moulu nde nondubo nofundo, ndelene tu djaleni Kristus.

Wilhelm Kashihakumwa, Usakos, ota pandula exwamo leongalo lomuwalvis Bay ta ti: Meongalo olo omonda dana Okrimesa. Eongalo oli na omwenyo nde ola xwama.

ESHIIVIFILO

Ngeenge tamu tumu omafano eni mwa hala a tulwe mOmukwetu, ota mu yakulwa. Ndelene dimbulukweni shili, mu tume omafano mawa a yela nawa, hano inaa twiilila. Omafano a twiilila ihaa yela nawa nge taa telekwa. Tumeni a pashuka nawa.

INO VAKA

Ope na epuko eli kuvahapu: Osheshi ovanhu ove na alushe elaka tali ti: "Ohatu lili ohamba." Vamwe tava ti: Okuvaka oshinima shomulaulu mukweni, oko ashike okuvaka. Vati okuvaka oshinima shomutilyane kaku shi okuvaka. Vati okuxwa, ko okulila Mandume.

Tala kaume oshipango 7, nhumbi tashi ti kutya, ino vaka. Ove ou to teya eefitola noikefa meeskepa, oto vake. Na ove ou to nyeka ovanhu mukulandifa oinima we i landa ombiliha, ove to tula ko shihapushihapu, oshipango otashi ti: "INO VAKA!" Ou to landifa, koinima yoye weda ko ngaho nawa omolwoivaha, nde INO VAKA.

Omwiimbi umwe ota imbi movelise imwe ta ti: Emona ile oukengeli, oupuna ile efimaneko nande li kongannde ku kwete Jesus ove epongo.

Filippus A. Nakanue.

NGELE U LI MOMBETE YUUWEHAME, INEKELA OMUWA!

Omumvu wa lala ethimbo ele moshipangelo nowa fa waa na we etegelelo lyasha nomalimbililo ge ku adha, uva nena omusita gwoye Jesus e ku uvitile ohenda nokwa hala oku ku kwatha ngaashi a kwatha yakweni nokwe ya aludha ayehe komalutu noomwenyo. Ngoye nguka u li muundjendi muuwike nomoondholongo, ila nena komusita omwaanawa Jesus, ngoka ta panga nota fudhitha omwenyo gwoye. Ngoye nguka wa vulwa omolwoondjo dhoye nowi iyekelela muulunde nomuwinaayi nou wete kadhi shi we okudhimwa po, pulakena nena tatu igidhwa: "Omuwa a tokola oku ka konga oonzi dhe noku dhi kwatha. Ndjika ya halakanithwa po otandi ke yi galula, ndjika ya teka otandi yi manga, ndjika tayi alukwa otandi yi koleke" Nangoye wo ote ku kwatha ila kuye wa manamo ote ku dhimine po iipwe yoye ayihe. Mboka ya thiki puye otaa gamenwa kuuwinayi kehe. PuJesus omusindjala ta kutithwa, omuloloki ta vululuki-

OMAMBO OMAPE GA HOLOKA MOSTORA

Omambo omape oga pu okunyanyangidhwa noye li mostora yOmambo kOniipa ngaashingeyi ogo ngaka:

1. "OMUTIMA WOMUNHU"

mOshikwanyama ola holoka. Omafano alo okwa pashuka. Oli nomapeko akalalela nelaka ola wapekwa, ondado 20c.

2. "MOSHILONGO SHETU"

mOshikwanyama ola holoka yo. Ola nyanyangidwa ngaha olutivali nde tali longo shili omunhu shihapu. Omapeko okwa kola nde tali landwa yo 20c.

3. "OKAMBO OKATIYALI"

kaanona yaSub B mOshindonga oka holoka, ondado 25c. Osho to mono ouyamba momambo. Endelega u lilandele diva omambo manga inaa pwa po.

"OMUKWETU" oha zi mOniipa- Omukuluntu gwoshifo/ Hoofredakteur: Omumbisofi Leonard Auala, amushanga gwoshifo/ Redakteur: Leonard M. Shemuvalula, Oniipa, Pk. Ondangua.- Ondando komumvo mOwambo 60c, mUushimba nOkavango 80c. Oofuto nomambestelo naga tumwe kOmukwetu, Oniipa, Pk. Ondangua.- Moka hashi nyanyangidhwa: FINSE SENDINGDRUKERY, OVAMBOLAND, S. W. A.