

# OMUKWETU



Oshifo shOngerki onkwaevangeli paLuther yomOwambokavango / Die Tydskrif van die Evangeliese Lutherse Ovambokavango Kerk

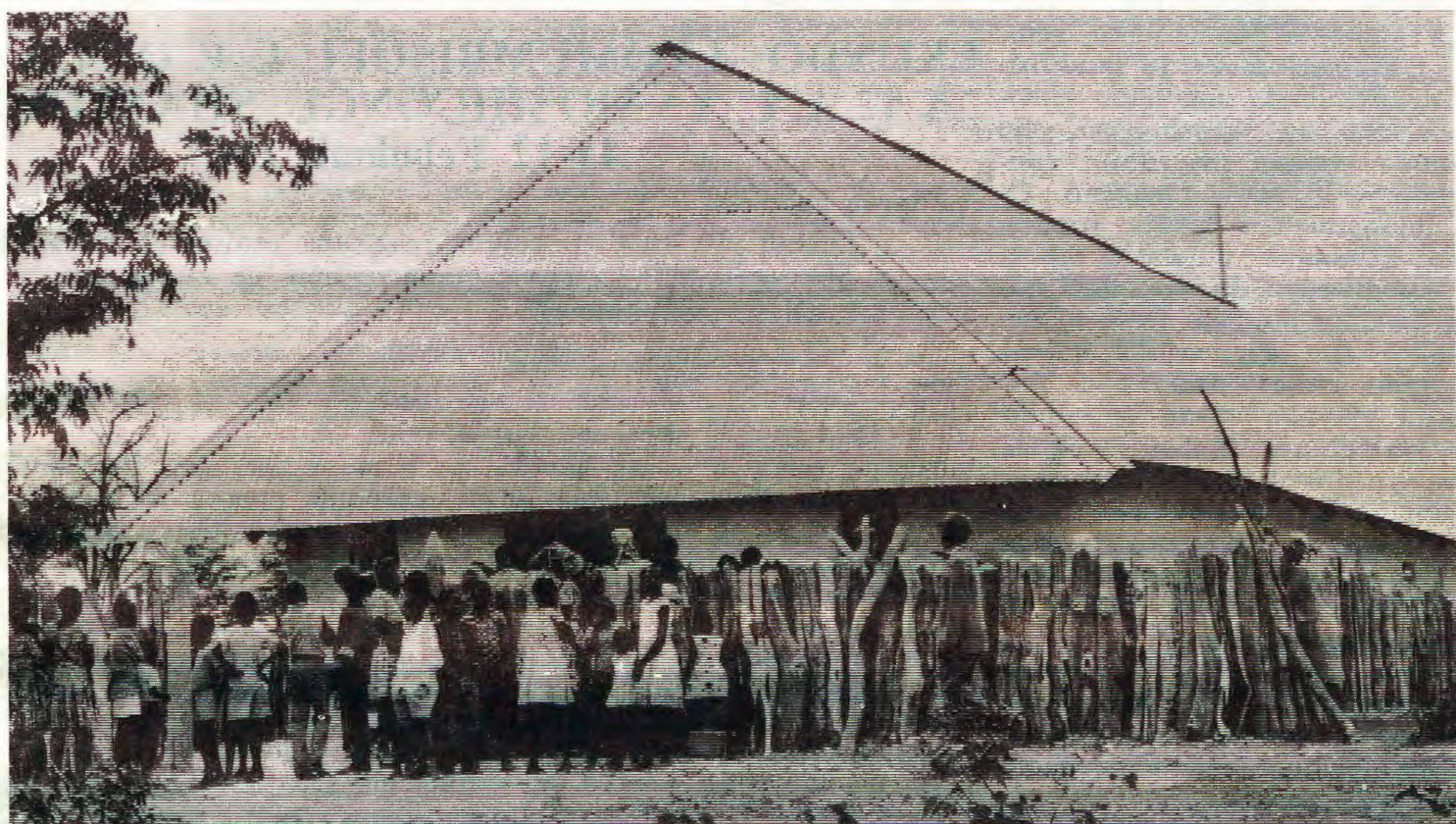
No. 5

MALITSA

1967

## EPANGELO LYAJESUS

Mat. 21: 23-27



*Ongerki on:pe yokEkeke ya yapulwa. Tala ehokololo ke pandja etitano.*

Aasaseri aakuluntu naakuluntu yoshilongo nando ya mono olwindji iilonga mbyoka Jesus e yi longo, oyo inaa dhimbulula oonkondo nepangelo lye. Iilonga yi li ngeyi omuntu itaa vulu oku yi dhimbulula manga kee na eitaalo. Aasaseri naakuluntu yoshilongo oya li owala, onkee inaa dhimbulula sha.

Eitaalo li nomwenyo Omuwa okwe li udha iudhwa oyindji, onkee ka li nomalimbililo nenge omagoyoko gasha. Eitaalo lyashili itali limbililwa oonkondo dhaJesus nando omoshinima shimwe. Eitaalo li nomwenyo gwomuJesus ohali pewa aluhe oonkondo oompe kuJesus mwe-

ne Joh. 1: 12. Aana yuuyuni itaa vulu nando okudhimbulula oonkondo nepangelo ndyoka Jesus te li longitha, odhe ya holama.

Oonkondo nepangelo ndyoka Jesus te li longitha kali shi lye mwene aawe, okwe li pewa megulu, Mat. 28: 18. Oonkondo dhOmuna gwaKalunga sigo onena otadhi longo mokati ketu. Miigwana, momazimo nomomalaka agehe, ihe nando ongeyi, ooitaali yaJesus oyo ayeke taa dhimbulula oonkondo dhOmuwa tadhi longo, otadhi longo mokwiitaala Omuna gwaKalunga, ihe mokwaaitaala itadhi holoka puuyelele. Omuntu nando na kale e li mokati kaa-

nongolongi ye thike peni, oonkondo dhaJesus itadhi longo muye kee na eitaalo Mat. 7: 29.

Ano ngoye sho u li po Omuna gwaKalunga, kala moohapu dhe, omapulo goye agehe e taga mono omayamukulo ga gwana miinima ayihe tayi holoka po. Moondunge dhoye adhihe nomoonkondo dhoye nomokutseya kwoye akuhe. Endjelela ano movelise ndji:-

**OONKONDO NDHI DHANDJE DHI LONGITH' OMUWA OMUSHIGAKANO GWOYE GU YELE ONGOYE U KALE WA SIMANEKWA NOHENDA NOMBILI U LELE.** Johannes Gueendama.



Malitsa 1967

**AAGUNDJUKA YETU**

Omukulu gwonale okwa tile: "Aagundjuka oyo oshigwana shokomeho." Odha tsa shili aagundjuka oyo eliko noonkondo dhoshigwana. Uunkundi noshiponga kehe tashi adha aagundjuka, nena oshigwana ashihe oshi na oshiponga. Oyo onkondo nuulaadhi woshigwana tau pumbiwa esiku kehe.

One aakuluntu inamu etha - dhimbwa omalualo geni omaholike! Galikaneni mwaa na ezimbuko omolwa go Moku shi ninga Tate yomegulu ta yambeke aagundjuka yetu, opo ye mu opalele aluhe, ya putudheni nokuyapukululila moohapu dhOmuwa. Unene tuu ngaashingeyi, sho aagundjuka oyendji taa dhini ethimbohenda ye li pewa omagano. Onyalo nuuhethi tau kwata oyendji yomuyo. Eshunduko nuuhasha tau ya kwata koomwenyo dhawo tango, nopo ihe omalutu nonkalo yawo ayihe.

Onkee ano aagundjuka italeni nkene hamu ende esiku kehe. Yanda ayihe mbyoka yi na ondumbo nehalo lyaKalunga. Kaleni aayogoki koomwenyo nokokukala kweni akuhe! Esimano lyeni olyondyoka ngele tamu lalakanene okwoopalela Kalunga omunamwenyo, egumbo noshilongo. Oohapu dhOmuwa otadhi ti ngeyi kune aagundjuka:

"Inapa kala nando gumwe ta dhini uugundjuka we, ihe a kale omuholelwa gwooyitaali nomoohapu nomokweenda nomohole nomeyitaalo nomuuyogoki washili."

Kaleni momagumbo gaakuluntu yeni ne mu ya yakule nuudhiginini. Iilonga yeni iiwanawa nonkalo ayihe yoopala otayi simanekitha uugundjuka weni. Yandeni okukala aalofu miilonga yomegumbo nomUushimba.

Onkee ano aagundjuka aaholike, komeho gaayihe lalakaneni okukala mOmuwa, uuyogoki niilonga iiwanawa. Ayihe mbika oyo esimano lyeni ngele tamu yi gwanitha nenyanyu.

**TASHI KWATHA SHIKE, OMUNTU NANDO NI ILIKOLELE UUYUNI AUHE YE ETA KANITHA OMWENYO GWE? NENGE TA GANDJA SHIKE SHI NINGE IIKULLA YOMWENYO GWE.**

**OONTOKOLWA DHEPANGELONGERKI**

1  
Epangelongerki olya lundulula ontokolwa onti-15 yEpangelongerki lyeti-30/11/-2/12/1967, amushanga nomudhiginini gwiiniwengerki M. Nghipandulua oye a ye kuAustria muEuropa kuGWN peha lyomumbisofi nome dhina lyongerki yetu. Oshigongi otashi kala ko eti - 1-5 lyaMai 1967.

2  
Epangelongerki olya uutha aalongi mbaka Jakko Kangayi, Okavango, Kuring-kuru na Oiva Ngaikukwete, Ondonga, ye kiilonge uuhiki (omusiki) kuPaulinum, Otjimbingwe moshikako II shomumvo nguka.

**ONGALO YAAMATI YOMOVE-NDUKA OMOLWETUMO**

Aamati yokomboni mOvenduka aandonge ayehe, mewiliko lyomwevangeliste Stefanus Iteua, oya gongele iimaliwa R13. 30. Oya tokola iimaliwa

mbika yi longithwe moshilongatumo muuzilo wOndonga. Amushanga gwOmwetu sho a talelepo Ovenduka nokwa popitha aamati mohungi mokomboni, oye mu pe iimaliwa mbika e yi thikithe kombelewangerki.- Ohole oyo epaya lyokumanga kumwe aamwameme.

## **EKUNDO LYOMUMBISOFI L E O N A R D A U A L A M O S H I G O N G I S H A A T U M W A 11-12 Febuluali 1967**

Aatumwa aaholike,

Otandi mu kundu medhina lyiigwana yaawambo naakavango. Mekundo ndika lyandje numvo omu na iinima itatu:

1. Otatu mu pumbwa.
2. Tu nokulonga meitaalo ashike.
3. Iihupe yomahepeko gaKristus.

1. Oshi iholola shoshene kutya, otatu mu pumbwa shili. Tatu mu pumbwa oyendji mu vule mboka mu li mo ngashingeyi mepya ndika lyetumo mpaka. Eindjipalo lyaatumwa, aasoomi mpaka mOwambokavango inamu li tila, kali shi oshiponga, ihe oyo endhindhiliko lyehumokomeho lyoshilongatumo shEhanganotumo lyaSoomi mpaka. Eindjipalo lyaatumwa mpaka kali shi ashike elago lyiigwana mbika yetu tayi mono ngeyi omayakulo gagwana aawe, oyo elago lyeni wo aatumwa, sho tamu yakulathana nawa, tamu topolelathana nawa iilonga pandjele yoonkondo dhomuntu. Ngaashi momalweendo gandje muSoomi aluhe onda indile komuwilikitumi tate Vuorela kutya: Alikana, tate, tu tumina aatumwa ya gwanena iilonga. Inamu yalula we aatumwa mboka ye li ko, ihe yaluleni iilonga mbyoka yi li ko, ya pitilila onkondo dhaatumwa mboka ye li ko. Omutumwa gumwe ota longo iilonga yaantu yatatu nenge sigo yatanu. Oyendji ohaa tonata olwindji uusiku nomutenya, opo iinima yi pite. Ino kumwa ngele taa teka po shili mbala. Esiku limwe onda lombwele tate Vuorela kutya: Omutumwa gumwe kOwambo a ti: "Kundila po tate Vuorela to ti: Otwa vulwa ...." "Omahodhi ga monika momeho ge. Tate Vuorela okwa ti: "Olye ano?" Ngame onda ti: Itandi tumbula edhina lye, opo u tseye haye awike aawe, ihe opu na aatumwa oyendji mboka taa teka po kiilonga yi vule onkondo dhawo. Na ngoka ina popya oomvulwe dhe mwene awike aawe, okwa popi peha lyaakwawo. Tu tumina tate, aatumwa ya gwana, opo ya topolelathane iilonga pandjele yoonkondo dhomuntu." Nonde shi tumbula wo mongerki yomongulu yetumo moka mwa li aapulakeni oyendji. Noshu tandi ka indila natango numvo, Kalunga ngele a thikitha ndje kuSoomi muMai nguka tagu ya.

Onke ano, one aatumwa aape, mboka mwe ya ngashingeyi, ekundo lyongerki yetu kune oyo ndika: Shi tseyeni, otwe mu pumbwa shili. Kalunga sho e ku tumu mpoka ina puka aawe, okwe shi tseye shili kutya, ongoye tuu Nima, ongoye tuu Ngandi, ongoye tuu naanaa wa pumbiwa mpaka. Nokuli nangoye wo, Heikki Mustaniemi, shi tseye, Kalunga sho Etsikilo kep. tali landula.

e ku eta sigo ompaka, okwa tsey a ongoye tuu wo wa pumbiwa shili mpa-ka mepya lyaKalunga nomaganondunge ndhoka we dhi pewa.

Nane aatumwa aakulu, ngele mwa yi kefudho kuSoomi, inamu shi kuminwa, ngele ongerki yetu tayi mu ithana ko mbalambala, mu galukile kutse, oshoka one omagano getu twe ga pewa kuKalunga. Na hane amuke mwe ya mepya ndika lyEtumo ihe noshigwana sheni ashihe shaaSoomi, one omagano getu omanene twe mu pewa kuKalunga. Oshoka Kalunga e shi tsey a kutya, one "BROODNODIG" kutse. Nokuli ngele tatu galikana egalikano lyOmuwa, meindilo ndika etine: "Tu pa wo nena oshithima shetu shesiku kehe," ohatu mu edhilile mo wo meindilo ndika, oshoka one wo omboloto yetu yesiku kehe.

2. Oshinima oshitiyali mekundo lyandje kune, aalongi pamwe nangame osho shika: Ngaashi omwiitaali gwonale William Cary, mokupopya oshilonga shetumo okwa li e wete shike komeho ge? Aawe, omilema adhike.

Nongele ta pampadhala momilema, ota dhimbulula omandundu ageke koombinga adhihe, pwaa na nando ompito. Kaku nondjila yoshilonga shetumo nokaku nuuyelele woshilonga shetumo, nokaku niimaliwa yoshilonga shetumo ihe meitaalo William Cary okwa ti ngiini? Okwa ti: Tu tamekeni koshipala shaKalunga oshilonga oshiyapuki noshidhigu shEtumo. Tu shi tamekeni meitaalotegamo. Na mehitori alihe lyetumo opwa dhimbululwa miigwana ayihe kutya, "Esindo ndyoka lya sindi uuyuni olyo eitaalo lyetu."

Nomumvo nguka gwonumvo 1967 oshilonga shetweni mongerki ndjika oshi nokukala ashike oshilonga sheitaalo lya fa lyaMoses ngoka, nonando oku wete komeho gawo efuta lyaa shi kukondjithwa nosho wo kolulyo nokolumoho omandundu gaa shi kupitwa, onkene tuu Moses, meitaalo ota ti ngiini? "Ikoleleni. Inamu tila. Omuwa ote mu kondjele. Ihe one kaleni mwa mwena." Nokeitaalo ndika Omuwa e ya pititha.

3. Moshinima oshitiyali osho omadhiladhilo ngangoka twa li nago nale motundi yOmbimbeli, Jesus sho ta ti, ombuto nge tayi kala ashike yi li nawa, otayi ikalele oyo ayike ihe ngele tayi gwile mevi notayi sile mo, otayi vala oomuma odhindji Jesus oye ombuto ya vala oomuma odhindji muuwehame uululu. Oye Omutumwa gwtango gwaKalunga a tumwa muuwehame uululu u vule waatumwa ayehe. Ihe Paulus wo ta ti: Otu nokuhumbata iihupe yuuwehame waKristus momalutu getu. Nota ti ishewe peha ekwawo: "Nonando mu ka kale mu naaputudhi oyendji. Ongame nde mu vala muuwehame."

Aatumwa aaholike, ngaashi mwe shi tsey a, haatumwa mbeyaka yotango, ooRautanen ayeke nooyakwawo yethimbo lyawo oyo ayeke ando ya tsakanekwa komaudhigu goshilongatumo, aawe, omutumwa kehe nongaashi ngeyi wo oku na omaudhigu ge nomauwehame ge. Nethimbo kehe lyomepya lyEtumo nandika lyomimvo ndhika oli na wo omaudhigu ge nomauwehame galyo gopaludhi lwago. Ihe Paulus ota ti: "One aamwandje, onde mu vala muuwehame." Uuwehame wowene pethimbo lyawo kau shi enyanyu, aawe, oluhodhi ngaa, ihe komeho ..... Ngele tatu tala ohole onene ndjoka hayi kala, unene muyina, yokuhola omwana, oya fa ngaa yi na ekota lyayo mpoka sho: e mu vala muuwehame.

"Omboka taa kunu nokulila omahodhi, oyo taa ka teya nenyanyu lyopombanda. Oyo taa ende nokulila, sho taa fala ko ombuto, otaa ka galuka ko nokuligola, nge taa humbata iihampi," Ps. 126: 5, 6.

#### OKUTSEYA KWETU OKOMBINGA

Okutseya kwopantu ngele ka ku na eitaalo otaku fala ngaa komeho, ihe eitaalo ngele itali longo moku-tseya nomoondunge dhi li ngeyi, nena omuntu ota kanithwa koondunge nando yemwene iteshi dhimbulula manga. Okudhimbulula oonkondo

dhOmuna gwaKalunga tadhi longo otaku fala moluthithiya lwolwene. Rom. 11: 23, 36.

Omumwameme omuholike, uuyuni nonena otau pula omapulo o-gendji gi ili nogi ili, ihe itaga mo-no omayamukulo ga gwana nani ngele eitaalo kali po, Joh. 15: 4-6.

J. Gweendama.



Omumbisofi L. Auala

#### MAI

1. M. Mark.1:35-39. Jak.2:14-26.
2. D. Kol.4:2-6. Jak.3:1-12.
3. W. 1Tim.2:1-8. Jak.3:13-18.
4. Do. **EYELUKO LYOMUKULILI**  
*Omuwa a yeluthwa.*  
Ef.4:7-13. Joh.17:24-26.  
Jes.33:17,24.
5. V. Kol.3:1-4. Jak.4:1-3.
6. Sa. Luk.18:1-8. Jak.4:4-12.
7. S. **ESIKU ETI-2 LYEGALIKANO**  
*Esiku lyehambebele.*  
1Tess.5:18. Eps.46:2-4.  
Eps.35:28.
8. M. Joh.14:15-21. Jak.4:13-17.
9. D. Joh.15:17-21. Jak.5:1-6.
10. W. 1Kor.2:12-16. Jak.5:7-12.
11. Do. Joh.7:37-39. Jak.5:13-20.
12. V. Hebr.11:32-40. Judas 1-16.
13. Sa. Jes.41:17-20. Judas 17-25.
14. S. **PENTEKOSTE, ESIKU LYOSHIPE**  
*Etililo lyOmbepo Ondjapuki.*  
Ef.2:17-22. Joh.7:37-39a.  
Jer.31:31-34.
15. M. Joh.3:16-21. Eps.106:1-12.
16. D. Iil.2:42-47. 1Mos.1:1-8.
17. W. Iil.3:1-10. 1Mos.1:9-25.
18. Do. Iil.4:6-21. 1Mos.1:26-2:4.
19. V. Ef.2:17-22. 1Mos.2:4-17.
20. Sa. Iil.8:14-25. 1Mos.2:18-25.
21. S. **ESIKU LYUUKWATATU**  
*Kalunga omuholekwa nomuhololwa.*  
1Joh.3:1-6. Joh.15:1-9.  
Omuuv.3:11.
22. M. 5Mos.6:4-13. 1Mos.3:1-13.
23. D. Kol.2:1-9. 1Mos.3:14-24.
24. W. Ef.4:1-6. 1Mos.4:1-16.
25. Do. 1Tim.3:14-16. 1Mos.4:17-26.
26. V. Ef.1:3-14. 1Mos.6:5-22.
27. Sa. Joh.5:17-23. 1Mos.7:10-24.
28. S. **Os. 1 ya landula Uukwatatu.**  
*Iiyaluwata tayi kana po  
noitayi kana po.*  
2Kor.8:1-9. Luk.12:13-21.  
Hes.3:17-19.
29. M. 2Tim.3:14-17. 1Mos.8:1-12.
30. D. Hes.2:1-7. 1Mos.8:13-22.
31. W. Iil.8:26-35. 1Mos.9:1-17.

OMUWA OTE KU ITHANA

## A HULITHA OONDJENDA



Nakusa meme Johanna Silas

Omukulukadhi Johanna Silas gwoomvula 39 a hulitha po oondjenda dhe eti- 2 lya Febuluali 1967. Pombila ye pwa thikama oyendji, yomaakwanezimo nookuume oyendji ye thike lunga 200, ya thiki kegumbo noye tu popitha noohapu dhOmuwa. Omatumbulo ogendji getu thindile mpoka tu kale muJesus Kristus omukoleki gwetu.

Mokukala moondjokana name-meme Johanna, otwa pewa omagano gaanona yaheyali. Unene ondi shi okuhambelela sho twa pewa eitaalo lyakola. Meme a hulitha a tindila poompadhi dhOmuwa. Tangi kune aamwameme mwe tu popitha noohapu dhOmuwa gwetu.

U. T. Nakambonde.

## KUKU MARIA SHELUNGU E TU TETEKELE

Omukulupe nguka oye okwa li omukulukadhi gwa nakusa Juuso Ngaikukwete. Kuku Maria okwa si e na oomvula 88. Oye pamwe nomusamane gwe ya toto po egongalo lyOshitayi. Tango oya li kOndangua pomusamane Nandago.

Nakusa okwa li shili omwiitaali lela. Okwa li a hilile oyendji kuJesus. Okwa hokolola oohapu dhaKalunga momagumbo nomooskola ngaashi mooskola dhekoloko neshasho, moka kwa li ha talele po nokuhokolola oohapu dhomwenyo dhevangeli.

Manga a li mondunda omolu uukulupe nuuvu, oyendji oye mu talele po shili. Okwe ya tseyithile kutya, ethimbo lye olya pwa po nota ka ya mbala kOmuwa gwe. Okwe tu thigile oohapu ndhika Job. 42:10,17. Johannes Makili.

## "IHE AYIHE MBIKA ETAMEKO LYETHETO LYOKUVALA"

"Aalongwa ye noye ya kuye noye mu ulukile oongulu dhontempeli. Ihe Jesus te ya yamukula e tati: Kamu dhi lwete adhihe ndhoka! Oshili tandi mu lombwele: Itapu thigwa nando emanya lya tentekwa kekwa-wo inaali kumunwa po."

Itapu thigwa nando emanya lya tentekwa kekwa, agehe otaga halakanithwa po. Ngashingeyi otaku ya ookristus aafundja noko ye li nokuli nomiigwana mbiika yetu mwa holoka ookristus aafundja. ligwana otayi ka matukilathana. Otaa hepekathana notaya dhipagathana. IHE AYIHE MBIKA ETAMEKO LYETHETO LYOKUVALA.

Nuulunde otaw lundu pombanda nuukriste woyendji otaw kanapo. Oyendji otaa ka sa kuumbanda ayihe mbika nge tayi holoka, yamwe ota ki idhipaga nayamwe otaa dhi paga, omoluumbanda weso nokuli. Oshoka oya tila ongokaa ye na Omuhupithi Jesus Kristus. Otaa kondjo nuumbanda yo inaa hala okutala Kristus.

Ihe Jesus ta lombwele naaleshi yOmukwetu naantu ayehe ta ti "Ongoka ti idhidhimike sigo ehulilo oye ta hupithwa."

Evangelii otali u vithilwa iigwana ayihe, li ya ningile ehokololo, opo ihe ehulilo tali ya.

Lukas Nantanga.

## OMUSITA OMWAANAWA

Joh. 10: 11, 16

Jesus oye omusita omwaanawa. Ngoka ta gandjele aantu ye omwenyo gwe. Jesus oku shi aantu ye naantu oye shi Jesus. Jesus oku shi ooitaali ye mboka taye mu galikana. Jesus ta ti: Oku na aantu mboka inaaye mwiitaala natango onke okwa hala yaye moshigunda she. Jesus

## EKWATHO OHALI ZI PENI?

Mepisalmi 121 omo tatu mono cyamukulo: OkOmuwa Omushiti gwegulu nogwevi. Owe shi itaala? Oshili, itaala ashike.

Mesiku eti-10 lyaDesemba 1966, otwa londo eshina lyokolutenda tu ye kOndonga omolu efudho. Osha li oshinyanyudhi unene kutse okweenda momaila. Otwa heluka mOtiwarongo nongula twa thikile sigo Otavi. Manga iikoto tayi shendje mO-tavi, nani ekulufuthi limwe lya yaka po nale iinima yandje. Unene tuu ompunda yandje moka mwa adhika iisimpo yandje. Ayihe kumwe oya li R102. Muyo omwa li yOmukwetu gwa 1966, noyOstora yOmambo. Ayihe othilu nekodholo ootuu!

Onda mwena nda ti thilu. Onda tsoongolo pethimbo tuu ndyoka nonda ti: Omuwa ongoye wa pele ndje na ongoye wa kutha ndje. Edhina lyoye nali simanekwe nomoshinima shika. Onda dhigile omahodhi momemo sigo twa thiki mOshaanda.

Onkugo yepongo oKalunga mwe-ne he yi tondoka. Muka onda yakulwa nekwatho inaandi li tegelela nando. Onda li ngaa nda shuna omutse molukwe kutya, kOndonga shilindi manga.

Aamwameme oya yakula ndje shili nonda mono nokuli R60. 00. Kumbika onda ningi ngaa omatha gokuthika kOwambo nenyanyu. Aakwanezimo oye tu yakula nawalela sigo twa shuna nombili.

Ev. P. Mateus.

okwe tu gandjele omwenyo gwe sho kwi igandja mokusa kwokomushigakano.

Ngele ino mu tseyana natango, endelela, mu konga manga ta monika. Oshoka oku na ethimbo to ke mu hala, ndele ito mu mono nando. Konga Jesus oshoka ehulilo lyuuyuni oli li popepi.

Fiina Hango



Iikombo oyindji yomOwambo oya li ya nanga kokwenye. Ngashingeyi omwiidhi itayi gu vulu we.

## ONGERKI YOMEHEKE YA YAPULWA

Ongerki ompe yomEheke, ndjoka ya tungwa nuupenda nonehwamo lyomusitagongalo pamwe naakwanegongalo aaheke noya pu nawanawa, oya yapulilwa oshilonga shayo komumbisofi Leonard Auala esiku eti- 19 Febuluali 1967.

**Eyapulo:** Omumbisofi naasitagongalo 9 ye ende momikweyo okuza koshinyangagongalo yu uka kongerki. Oya li momizalo dhuusita. Oya ende mepandaanda lyaantu noya thikama posheelo shongerki.

Sho kwa imbwa eimbilo 163 mEhangano, omusitagongalo J.Ekandjo a lesa epopithokundo pondje ysheelo. Omumbisofi a yamukula nomatumbulo gokwegulula osheelo nokuhitithamo aakwanegongalo. Kapwa li ngoka a hala okukala pondje, onke posheelo opwa li gwandhimbo ta dhenge gwagonga.

Omumbisofi a thikama koaltari a kundukwa kaayakuli ye. Okwa kundu egongalo naayenda eta lesa IPetrus. 2:4-5. Omumbisofi a fatula oshitya "ongerki" na ongerki yaKristus muuyuni auhe moka Ongerki yOwambokavango yi li oshilyo. A fatula wo, nkene etungo ahihe lyongerki yaKristus muuyuni tali kwatathana kumwe omuJesus ngoka emanya. Elalakano oloyo "okuthikitha egongalo kedhildhilo lyaKalunga."

**Elongelokalunga:** Pwa imbwa eimbilo 125 naasitagongalo Johannes Ekandjo naJohannes Gweendama ya yakula moaltari. Oohapu dhomoshiyambelo dha leshwa mu IJoh.2:7-11.

Euvitho lya ningwa komusamane **Josia Mufeti** gwokEngela mokulesha Luk. 7: 36-50: "Omukiintu omulunde okwe ya kuJesus poshililo. Okwa lili. Okwa shashamene nomahodhi oompadhi dhaJesus noku dhi thetitha omafufu gokomutse gwe, e dhi thipi nokwedhi gwayeke omugwayo gwa nika nawa."

**Amakutuua.** A lesa Eps. 84 sho a tumbula: "Egumbo lyyoye lyoopala ngiini, Omuwa Sebaot! A fatula uuwanawa wegumbo lyomegulu nokwa halele aaheke okukondjela okuthika megumbo ndyoka, oshoka oye nompolo okuya mo.

**Omapopitho:** Konima yefudho lyominute ndatu omusamane **Henrik von Schantz** gwomOnandjokwe, okwa lesa Mark. 14: 12-15. Okwa hokolola etungo nkene lye ende nonkene oongungadha pu okufutwa adhihe. A tumbula nkene omusita Ekandjo a fa naanaa a pula ngaalongwa yaJesus: "Omuwa, openi wa hala tu ku longekidhile onzigona yopaasa u yi lye? Ongerki oyo tuu eyamukulo." Onke a tumbula: One aaheke notse wo atuhe, tu nyanyukweni.

**Omukuluntutumwa tate Arvo Eirola,** a lesa IKor. 3: 11: Jesus oye omukanka nakehe ta tungile mugwo ota thikama nawa. A halele egongalo noshigwana shaawambo okutsama

momukanka Jesus sho a tumbula: "Oshigwana shi na omukanka nguka nongele oshi li momaudhigu, otashi kala ko."

Omusamane **Petrus Shipena** a tumbulile egongalo: "Nonena tu noohapu dhuuprofeti dha kola dhi vule dhonale notamu opaleke ngele tamu dhi tala nawa. Odho uuyelele nolaamba. Egongalo lyEheke ngele tali kala mudho, padho notali dhi tala nawa, otali humu nawa komitse."

**Timoteus Shipanga,** omutonateli-shitayingerki shOndonga, a tumbula: "Nyanyukweni ngele omadhina geni ga nyolelwa megulu. Ngele ga nyolwa membo lyomegulu kombinzi yonzigona medhimopo lyoondjo dhesiku kehe."

Lwahugunina omumbisofi a pandula Kalunga nosho egongalo moluupenda walyo. A pandula mwene gwomukunda omusamane Amagola molwelongelokumwe. A pandula aakuluntu yegongalo naalongi sho ya kundathana nawa etungo lyongerki. A pandula aanona wo sho yatutu ombasikena.

Omumbisofi a ulukile aaheke iilyo yepangelongerki nonkene uukumwe waaheke nongerki ayihe ou li po wakola. A tumbula: **Ohole oyo epaya lyegwaneneno lyokumanga kumwe.**

Konima yaashino opwa li ihe gwandhimbo ta dhenge gwagonga. Egongalo alihe naayenda oya paluthwa wo komalutu. Mokudhiladhila egongalo ndika lyaHeke otwa dhimbulula uukumwe owo oonkondo.

Egongalo alihe olya shuna komagumbo nenyanyu enene.

### EPANDULO ENENENENE

One aawameme muC.D.M. mboka mwe tu tumine omagano gekwatho metungo lyongerki yetu ompe, nena twa hala oku mu pandulila ekwatho lyeni enene li thike mpaka:

Aamwameme muUbvley R 9. 69  
 „ muLokola R14. 58  
 „ naNorth R 1. 00

Kalunga ne mu yambeke oomwenyo nomalutu geni. Ne mu gwannithile oompumbwe dheni pambepo nopalutu.

Peha lyaalukonda,  
 Johannes Gweendama.

**LONGELENI OMUWA NENYANYU**



Aatungithi yongerki tate H. von Schantz natate Johannes Ekandjo, mesiku lyoshituthi otaa kundathana nenyanyu, oshoka oya sindana.

## CSHITUTHIYAPULO SHAAPANGI AAPE ETI - 21. 2. 1967 MONGERKI MONIIPA

Aapangi aape ya adhika ya te tekele mongerki nokumwena. Omumbisofi pamwe naasita ye mu yakula ye ya mo. Aantu ya thikama nokwiimba 493 manga aasita taa ende nokuthika moshigalikaneno. Egongalo lya kuu-tumba naayapulwa ya kundukidha owalitali nomuzalo gwawo gwa toka nawa.

Tatekulu Auala a indile omusamane J. Amakutuua a kunde aantu. Okwe shi ningi mokulesha Mark 16: 17. Okwa fatulula ngaaka kutya, aayapulwapangi otaa ka kala noma, laka omatalala mokuholola Krsitus mokati kaamwayina riilonga yawo ota-yi ka kala inene pawiliko lyOmuwa mwene

Omumbisofi a kundu egongalo no-po ihe okwa tumbula omadhina gaa-yapulwa nokwa galikana wo. Aasita avehe pamwe nomumbisofi oya kundu egongalo naayapulwa shaangoka palufo lwe. Aayapulwa ya hempulula eitaalo lyaakriste, omubisofi nokwa galikana egalikano lyomupangi. Aayapulwa ya tentekwa iikaha. Konima aapangi aape ya imbi "likaha yandje yelitha," mokutalela egongalo. Konima egongalo lya imbi 440.

Omusamane A. Eirola a e ta wo omakundo ge kaapangi aape nokuya tsa omukumo moshilonga shawo taa shi tameke. Aalongwapangi yongundu II ya imbi. Omusamane J. Nghilundi-lwa a kundu aapangi nokuhiya aa

kuluntu yaapangi aape kOnandjokwe-

Oshituthi sha tsikilwa kOshoopala. Ooyakwawo nookuume kaapangi aape natse aanandjokwe twa hanganithwa kumwe. Oomwenyo dhetu dhu uudha omahambeleso omolu' uuanawa owindji Kalunga e tu ningile.

Omapopitho nomaimbilo ga fa inaaga hala okupwa po, ihe twa halakana nokulalekathana. Aapangi aape yatatu, Lyyli Shipunda, Saima Nambuli naKristofina Shihepo, ya lalekwa ya ye kOkavango, okuyakula aamwatate muJesus Kristus hwiya-ka.

Omagalikano getu naga landule aapangi aape, ya vule okugwanitha euvaneko lyawo. Jesus awike ta vulu oku ya kwatha ya kale mohole ye!

K. Pakkala



Aapangi aape mboka ya yapulwa nuumvo. Omundohotola H. Kyronseppä ta monika kolulyc, ote ya minike.

### OPAASA OYA THIKANA

Omasiku omasho nasher a gowala taga piti po, otse notatu dhana oshituthi shoPaasa. Jesus ta hepekwa note tu sile momushigakano. Molwandje

nomolwoye oye te ehamekwa. Oto yi dhana ngiini nopeni to yi dhanene? Oto ki ipopila? Oto ke mu gwaaleka? Oto ke mu idhimbika? Oto mu alele? Omunelago omuteeloni ngoka a tumbula: "OMUWA SANDJE OHENDA NGAME OMULUNDE!"

### OSKOLA YAAVALITHI MONANDJOKWE

Otayi taamba aalongwa aape nuumvo.

Mboka taa tegelelwa oyo aapangi mboka ye na onzapo ya St. VI Nale opwa tseyithilwa kutya, oskola tayi tameke moshiEnglisha. Ihe osho wo pwa holoka kutya, oyendji mboka taa hala okuya moskola yaavalithi oya tila oku yi tameka moshiEnglisha, otaa ka mona natango ompito okulongwa moshiAfrikaans.

Oskola tayi ka tameka muApilili, ihe taku tegelelwa aalongwa ya tseyithile mbala ehalo lyawo. Naa etelele ombapila yegongalo.

Shaa ngoka u uvite eithano lyOmuwa meyakulo ndika enene, ota tegelelwa, oshoka ota pumbiwa unene.

### ETSEYITHILO

Aamwandje aaholike, one mboka mwa piti moskola dhaakadhona, ngaashi mwa uvu opwa dhikwa oskola ompe Handewerkskool, pO-lukonda. Otse nane, aamwandje tu hanganeni kumwe mu tumine ndje oombale oombwanawa tu kwathe ngeyi oskola ndjoka, osho natse wo tatu kala tu nekwatathano nohole neyakulathano

Oniipa, 6.3.1967.

Nyoko gweni,  
Helmi Haapanen.

### OSKOLA YOMUKARIBIB

MuKaribib omwa kala oskola. Osekundoskola. Oskola ndjika otayi putudha aantu mboka ye nokulonga iilonga yontumba noyongandi moshilonga shetumo.

Oskola yomuKaribib oyi noongundu oonene ngaashi ostanda VI, VIII noyi na ngashingeyi ostanda X nokuli. Omumvo gwa yi aalongwa omulongo yostanda VI oya shanga ekonakononoya piti nawa kakele kagumwe. Mumboka ishewe omulongo ya shangele ekonakononoya Juniolo, omugoyi oya piti nawa.

Oskola ndjoka otayi ende tayi humu komeho omumvo nomumvo. Aalongwa yatatu oya nyolele omatilikali lwotango moskola ndjika noya pita ayehe.

# OUNYUNI OTAU TONGO SHIKE

## ONGERKI YOWAMBO-KAVANGO YA ADHIKA KOLUHODHI

Oshiponga shoshihauto nomulongwa gwomoskola yuusita mOtjimbingwe a si ombaadhilila.

Elaka olye ya moradio, lya zi mOkahandja lya tumwa kumeme Laukkanen. Olya tumwa omukuluntutumwa mOniipa nolya taandele mbala koombinga dhongerki kutya:

Oshihauto shongerki, sha li tashi fala aanaskola yomcskola yuusita mOtjimbingwe, sho ya fudha mOwanbo, osha kandoma. Omulongwasita omusmane David Shetunjenga, omulergi, gwomegongalo Onangalo kUukwaluudhi, okwa sile mpoka poshiponga. Osho omulongwasita Johannes Hamulungu, Ondobe, a mono oshiponga molupati naanona ya ehamekwa nayi naya-lwe ya ngwandjagulwa.

Moshihauto mwa li aalongwasita, aakulukadhi yawo nuunona pamwe nomuhingi. Iihuna oyi thike peri! Inapu uvika manga opehala linipo oshihauto sha kandomena naashihe shoka sha ningwapo, oshoka oradio ya tumbula owala iinonenima. Oluhodhi olunene, ihe konima pwa kundanwa kutya:

Potundi 11.00 yesiku eti-3/3/67 oshihauto sha zi pOniipa okufala aalongwasita kOtjimbingwe. Ondjila oya tuta komvula noyi nomuthenu. Oya thiki muTsumeb, moka ya zi potundi 8.00 yesiku lyongula, yu uka kOtjiwarongo, moka ya thikamo taa lokwa. Motjiwarongo omuhingi a mono othaila nokwa siikile nawa aantu yaa lokwe. Okuza mOtjiwarongo oya lamba ondjila yaKalkfeld nosho ya dhimbulula omuthenu ogwindji oya galukile kOtjiwarongo, ya kuthe ondjila yoteya ndyoka yu uka kOkahandja.

Sho ya kondo kashona ehala Sukses, oya ka lamba ordjila ndjiya yu uka lwokOmaruru, kOkahandja ye wete okokule unene. Oomaila ndatu adhike okuza puSukses, oshihauto nosha thenunuka lwanima nosha kandoma. Uupyakadhi!

Omuhingi a fulu hamulungu koshi yoshitenda, shoka she mu kamini-ne nayi moombati. Osho ya kondjo sigo ya dhimbulula, Shetunjenga onguka ishewe koshi a mbondolelwa nayi, ihe akutu omwenyo kagu mo. Oshihauto sha lala pevi nongundu yi

lipo tayi lili nokukema moshiponga. Otatu ningi ngiini? Omuhingi oti ipula mbela ngiini? Ihe nomiiponga Kalunga ta kwatha.

Pwa holoka aapolosi. Ya pula mongodhi yopofaalama ekwatho kOkahandja. Eyamukulo inali ya, sigo aapolosi ya matukile kOkahandja. Meme Laukanen a tseyitha oshiponga kaaTjimbingwe nooSeppo oye ya reulumo. Omudhimba naamboka va mono iiponga ya falwa kOkahandja nokonima mboka ya lemana ya falwa moshipangelo mOvenduka. Omuhingi a edhililwa manga mondholongo.

Mboka ve li nawa ya falwa koskola kOtjimbingwe naamboka ya ehama kashona oya pangwa noya lalakwa ya ye koskola. Ihe mboka ye ehama unene otaa pangwa mOvenduka. Omudhimba sho gwa pu okutandwa mOkahandja, ogwa falwa kOtjimbingwe, nkoka nakusa David Shetunjenga a pakwa mombila esiku 6/3/67 potundi 10.

Omuhingi naapolosi oya shunine koshihauto hoka sha kandomene. Aapolosi va tala ehala ndyoka noya shuna kOkahandja. Omuhingi a nyolithwa ehokololo lye noye mu laleke a ye kOwambo.

Omumbisofi L. Auala sho a kundana nawa iinima ayihe nkene ye ende, okwa yi koshigumbo sha nakusa medhina lyongerki ayihe, okuthikithila omuselekadhi meme Shetunjenga oshiningwanima shika. Omumbisofi haye gwotango okutseyitha omuselekadhi elaka ndika, aawe, olya adhika lya tumwa ko nale moradio nomusamane T. Pentikainen okwa faalele omuselekadhi lwotango elaka.

Iilonga yaKalunga oyo iikumithi. Shoka ha longo itatu vulu oku shi nongela. Ihe tatu tseyia, omumati gwongerki Shetunjenga, ngoka a li i itokolela oshilonga shokuyakula ongerki, sho ta lala meendo mOtjimbingwe, oye ombuto nonzapo kutya, aawambo taa kondjele oshilonga shOmuwa mOtjimbingwe nosho endhindhiliko lyohole, sho aamati yOmuwa ye hole oshigwana nongerki yawo. Ihe sho oluhodhi lwa gumu ongerki ayihe ngeyi, osho ongerki tayi tala omuselekadhi meme Shetunjenga noothigwa nomeho gohole noku ya halela egameno lyOmuwa moluhodhi nomokukalamwenyo akuhe kwawo. - Ashihe osha za kuKalunga notashi shuna kuye.

## OSHEENDO SHOKUVENDA OVANHU MEDU LOWAMBO - '967

### TAVA VENDWA OMOLWODU T. B. OSHIKOLOSHA, OPOLIO NAMALALIA.

Eshiiwifo la dja kepangelo louhaku mOshakati otali ti ngaha:

1 Ohandi pandula natango ekwafo leni nelongelokumwe lomudo ou wadjako, eshi mwa li tamu kwafele oshendo eshi sha li tashi vende ovanhu.

2. Mohani Apilili neudo 1967, oshendo otashi ende neenhele okuenda nokukonakona omaudu elili nokulili movadalelwamo aveshe.

3 Eepela daMalalia otadi yandjwa movanhu aveshe momafimbo tuu oo.

4 Omalenga aeshe manene namani, ovafitaongalo novalongifikola otamu indilwa nehafo li nombili, mu kwafele moshilonga eshi, osheshi ekwafo leni olo alike tali pondola sha unene.

5 Molwaashi omunhu oku nokuha kulwa lutatu, onghene natango muMai naJuli 1967 ovanhu otava ka endululwa natango okuhakulwa nomafimbo okwendululwa otamu ke a shiivifilwa komesho vali.

### AMERIKA A HALA A TULE OMUNHU KOHANI 1970

Epangelo laAmerika lokukonakona momhepo otali lineekele alushe kutya, modula 1970 pamwe otali tula omunhu kohani. Omwedi wa djako oshituki shavo shimwe osha pila mombada nde ava va li mo vafya. Paife ne vati ova hala va tale po nawa, oyo tuu 1970 va wilife omunhu kohani.

Ovalumenhu vatatu ovatukidila, Virgil Grisson, Edward White naRoger Chaffee, ovo va pila modila omwedi ou wa djako. Ovanhu vahapu noifo oya pa oushima ehanganano lekonakonomhepo kutya, etukidila eli la eta oshiponga ola li inali longwa nawa. Inaku shiivika naana osho sha xwamifa omudilo modila inya ndele kwa konekwa kutya, oumbulu-lu vomhepo vodila ngenge tuu va nyonauka kanini otashi dulu shi topife oindwafuki yodila. Oitekaukile yodila ei otai pangululwamo keenghulungu di i konakone nawa.

## OTANDI HAMBELELE KALUNGA MUSHOKA E SHI NINGILE NDJE

Aamwameme aaholike muKristus Jesus, otandi hambelele Kalunga nomwenyo gwa hafa shili. Omolu uuwanawa owindji e u ningile ndje. Omuwa oku uvu omaindilo gandje shonde mu indile. Manga nda li moongundu dhaanona onda li ihaandi ethiwa komukithi, nando ndi ka tale oopela koshipangelo itashi kwatha sha. Unene ohagu kwata ndje ngaa pethimbo lyothinge. Itandi tsakanitha nando omasiku gandje moskola. Manga ndi li momumvo 1964, ndi nokuya koskola yaakadhona koTshandi momumvo 1965. Ondi indile Omuwa Kalunga kandje: "Omwa Jesus, kesilohenda lyoye Omuwa, aludha ndje, pendje ukolele wokolutu, ndi wape oku ka tsikila oskola yandje nombili."

Okuza mpoka nda hulitha omumvo (1964) noinandi mona we omukithi ngoka. Sigo nda yi moskola yaakadhona. Ngashingeyi pwa piti nokuli omimvo mbali sigo okesiku ndika inandi gu mona.

Kape na omalimbililo gasha, Omuwa mwene e shi ningi notardi hambelele Kalunga nomwenyo gu udha enyanyu.

Otse nangoye otwi itaale tuu edhina lyOmuwa gwetu Jesus Kristus, tu ninge aana yaKalunga? Omuwa ota konkola piyelo yoomwenyo dhetu nangoye a ye mo no ku tu ninge aana yuuyelele.

Tu mu egulule ngashingeyi, manga te tu ithana. Oshoka katu shi ethimbo, nesiku Omuwa gwetu teya. Pamwe ote tu adha ombaadhilila?

Otwi ilongekidha tuu oomwenyo dhetu okutegelela eyo lyOmuwa? Otatu adhika ngiini mbelee?

Hilma Muatile Shipopjeni.

## OYOONGALELE YOMALAKA OVAWAMBO TAI ONGALA

Oyoongalele yomalaka ovawambo Oshindonga nOshikwanyama, tai ongala muMalitsa neudo. Oilyo yoyoongalele ei mOwambo oya shiivifilwa kombelewa yomalaka (Inboorlingtaalbuuro mOvenduka) eenhele nomafiku okwoongala. Omikalo dipe domanyolo taa ka longifwa momambo eeskola otadi kudafanwa.

Opa totwa yo oshoongalelemanibo (boeekomitee,) osho tashi dimine omambo oo e nokulongifwa meefikola. Oshoongalele eshi oshipeshipe mOwambo inashi kala mo nale. Oshoongalelemanibo eshi nasho otashi ongala yo muMalitsa, konima oyoongalele yomalaka eshi ya dimbuka.

## ESHIIVIFILO

Keekoshuise mOwambokavango:

Ovahongi ovafimanekwa,

Ohatu mu indile mu longe oshilonga shemwvangeli meyakulonghenda, mu kale hamu pwilikinifa ovanafikola veni efiku taku ningwa omambo moRadio yevangeli onguloshi.

Komuleshi wOMUKWETU keshe:

Edina .....

Oandeshi: .....

Ovanhu ava hava pwilikine oradio yevangeli moradio yange .....

Yadifa okambapila aka nde toka tete mo, ove u ka tume komushamane Toivo Ndevaetela, Engela, Pk. Oshikango Oukwanyama.

## AALESHI YA NYOLA

*Erastus Iindongo ota ti ngeyi:* Aagundjuka aakwetu tu angaleni aapukithi mboka haa kondjitha elongo ndyoka twe li longwa. Tu ikutheni mo muyo. Oshoka aantu mboka yatya ngeyi ihaa longele Omuwa gwetu Kristus, aawe. Ohaa longele omalutu gawo yene nohaa ipanda koochapu dhawo oombwanawa dha fa omagadhi. Ihe ayehe yatya ngeyi, ohaa pukitha omagoya. Onkee nda hala tu ya angaleni. Kundweni noohapu dhika, Rom. 16: 17-20, eimbilo 402.

*W.Kapofi, Windhoek, ota ti:* Omudo mukulu owa xula po. Ndelene fye ohatu teelelwa tu lidule oukulu aushe, ndele tu djale oupe. Okwa ti yo: Tu indileni yo kuTate Kalunga e tu lokifile odula yaye iwa yonghenda.

*Anna Ananias Kongo ota ti:* Otandi hambelele Tate Kalunga sho a kwatha ndje nonda mono ompito yokwaaluka kuuvu nda li ndi u na. Tala omukwetu, ino tila we koshipangelo, oshoka okwo ku na ekwatho lyashili lyopalutu. Uva omapukululo ope u ye koshipangelo mbala manga uuvu inaa u tana. Ngele wa aluka ino dhimbwa okuhambelela Omuwa Jesus. Otu na omwaaludhi omunene nokwa hala wo oomwenyo dhetu dhi aluke.

## OMOLWASHIKE OKUKALA KWANGE IHAKU LUNDULUKA

Nda fa ngoo nda ninga eedula dihapu, nda wana okulundulula okukala kwange, ndele fiyo opapa inaku lunduluka. Omikalo dange oda fa ngaho domudo waya natango. Onghe nde li pula luhapu kutya: Omolwashike mbela omikalo dange ihaadi lunduluka? Onda dimbuluka oshinima shimwe shinene eshi tashi imbi okukala kwange ku lunduluka. Pamwe osheshi ihandi i komambo? Pamwe osheshi ihai diinine oshoongalele shovanyasha? Pamwe osheshi ndi hole kunwa? Pamwe osheshi ihai lesa ombimbeli yange nokwiilikana? Pamwe osheshi ihai dulika kovakulunhu vange? Lesha Ef. 6: 1-3. Pamwe osheshi ndi hole onyalo noundede? Omayeletumbulo 6: 6.

Omu kwetu ou li ngahelipi noinima ei? Pamwe naave osho u li? Oove naanaa iho lunduluka. Nge osho u li, tameka nena okukonga Jesus.