

OMUKWETU

Oshifo shOngerki onkwaevangeli paLuther yomOwambokavango / Die Tydskrif van die Evangeliese Lutherse Ovambokavango Kerk

No. 1

JANUALI

1967

JESUS OYE UUYELELE WUUYUNI

Joh. 8:12.

“Ongame uuyelegele wuuyuni. Ongoka ta landula ndje, ite ende momilema, ihe ota kala e na uuyelegele womwenyo” osho Jesus a popi.

Sho tu li muunyuni, otwa pumbwa olamba Jesus Kristus. Otwa tameke omumvo omupe ndi shi. Gwogwene omupe shili pamathimbo guuyuni. Ihe uuyuni wowene nando

momvula ompe, owu udha omilema thoko, naana ngaashi wa kala momumvo omukulu. Ando aakuuyuni ayehe oya shituluka shili mOkrimesa ando nomomumvo omupe kamu nomilema. Mpoka eshituluko lyaningwa, ope nuupe shili.

Ihe ngaashi tashi monika nongashi tashi kundana, nkene aantu yuuyuni

nomomumvo omupe taa tsikile okukala kwawo miilonga yawo ngaashi ya li nayo momumvo omukulu, mbyoka yaa shi yopahalo lyOmushiti, onkene ano tatu ti omilema odhu udha mo momvula ompe sigo onena. Oshili uuyuni owa pumbwa olamba Jesus Kristus. Olamba ndjika inayi pumbiwa ashike, ihe oya gandjwa muuyuni womilema kuKalunga. Jesus otwe mu pewa a kale uuyelegele wetu.

Momumvo omupe, tu longe, tu popye, tu dhiladhile notu kale muuyelegele mboka.

Tu landule olamba ndjo, opo twaa kale notwaa ende momilema. Ngoka te ende momilema oku li moshiponga. Ita mono mpoka ta lyata. Ota gwile miilambo noti ipumu kiithindi nokomamanya, ye eti itsu komakwega gomutondi.

Olamba Jesus otai pumbiwa kukehe. Oye ta wilike Ongerki ye. Oye ta litha omagongalo. Oye ta wilike momanongelo. Oye ta wilike aakriste. Aapangeli yetu otaa pumbwa uuyelegele mbuka Jesus Kristus. Muuyelegele mbuka ashike omuntu te shi ningi, otashi zi eyambeko. Ihe omuntu gwomakutsi gaali nomaludhi agehe gaantu itaa landula nokulonga muuyelegele nomehalo lyOmukulili, oku li moshiponga nehulilo lye omilema.

Ooitaali yaJesus, momvula ndjika twa tameka, ngele tayi kala nawa nenge nayi, dhama olamba yashili Jesus Kristus. Elalakano lyetu kali shi lyomuuyuni mbuka, aawe okuthika moshilongo shegulu. Landula uuyelegele wEvangeli. Muuyuni kala mo nolamba ndjika, opo ito tsikithwa komaponga gu udha momilema. Jesus ta ti: “Ngoka ta landula ndje ite ende momilema, ihe ota kala e nuuyelegele womwenyo.”

L. M. Sh.





OMUKWETU

Januali 1967

MOKUDILADILA OMUDO MUPE

Otu li pehovele lomudo mupe. Osho ohatu u shaluta nde ohatu halafana atushetushe Omudo Mupe welao u yadi onghenda yaKalunga.

Omesho otaa keuka momudo mukulu. Otwa koneka kutya, omudo 1966 itau dimbuwa nande nde itau ka dimbuwa nande mehistoliletweni. Owa li mudjuu. Muo mwa ningwa oikulumuna ihapu inini naine ne moshilongo shetu nokoilongo ilili. Moku u diladila omwenyo owa fa tau lixwina. Ovanhu inava kala naana nombili momundo oo. Shiimba wa hovela nokuli okunyola ehistolilao. Kape na ou ta shiiva komesho Ndelene omhepo otai eta edimba kutya, omudo mupe nao itau kala naana wa pola. Opa nyika okukala eehamanana neemhangela domalwoodi noinghumungu. - Omapya ha aeshe taa menifa nawa oilya ihapu, osheshi odula oyo inai loka nawa diva, oyo tuu edidiliko lotete.

-Ounyuni otau kala ngaashi tau kala. Oinima yao otai lunduluka. Ino limbililwa hano komalunduluko oinima yomounyuni, osheshi oyo itai kalelele otai xulu po. Muyo kamu na omwenyo waalushe.

"Ndelene eendjovo dange itadi xulu po," osho Jesus a ti. Ou ta kala muJesus nde ta ende paendjovo daye nomomudo mupe, ota kala nawa. Edina olo Jesus ola li nde otali kala epopilongulu la dingilila ovaitaveli vaye. Ino kala pondje yeendjovo dOmwe. Pewa omukumo kutya: Omwene ota shiiva ashishende oha pangele ashishene. Ongerki yaye otai kala po alushe itai findwa komivelo doheli.

ETSEYITHO

Ngele oku na ngoka to nyolele kOmbelewa yongerki nowa hala eyamukulo tali zi mombelewa, ino nyola edhina lya nima ngoka u shi, ihe u nyole ashike kombanda yompunda: "Ombelewa yongerki, Oniipa", opo ombapila tayi vulu okuyamukulwa ku shaa ngoka ta adhika po. Ihe ngele to nyola nima ngoka e li mombelewa yongerki oshinima sheni naye amuke, nyola ngaa kombanda yompunda edhina lye. M. Ngipandulua.

OONTOKOLWA DHEPANGELONGERKI

1
Pauvathano lycmukuluntu gwoskola mOkahao naalongikadhona ayehe mOngerki yetu, Epangelongerki otali pandula edhiladhilo ndika lyoshigongi shaalongikadhona muMalitsa 1967 notali indile oshigongi shika shi dhimbulukiwe momagalikano.

2
Epangelongerki tali pandula omusita K. Shuuja, ngoka a holola edhiladhilo okambo okawanawa ka nyolwa moshiSuomi ka lundululilwe mOshiwambo. Epangelongerki olyu ukitha kokangundu komambo oshimpuyu shika.

3
Epangelongerki lya pandula ompito ndjoka ya monika, oskola yoontungwa sho ya ziminwa kepangelo yi kale kOlukonda, yi tameke 1967 okuhumitha komeho mboka ya hala okutunga oontungwa oombwanawa. Aalongwa moskola ndjika otaa ka kala mo omumvo gumwe. Omukuluntu gwayo kuku H. Haapanen, ota ka gandja uyelele wa gwana kombinga yoskola ndjika.

Edina lOmwe ne oshikelelifo shapama. Omuyuki omo ta hondama munde ta mono eameno.

ETSEYITHILO

Ngele to nyolele kOmukwetu ombilive yi na iimaliwa nenge yi na oohapu wa hala dhi tulwe mOmukwetu, ombilive tayi pitile mopoosa, kombanda yompurda tula ko ostombe ya gwanalela, ino shi dhimbwa nande. Oombilive dhocostombe inadhi gwana ohadhi kwatwa mopoosa. Ano ngele iimaliwa yoye inayi thika nenge oshinyolwa shoye inaa shi thika kutse pamukalo wa tya ngaaka, kashi shi ondjoko yetu. Oyoye mwene ngu ino longitha ostombe yagwana.

Ngoka ishewe to nyola u na omapulo goye mwene wa hala ga yamukulwe, ino dhimbwa okupatelamo ompunda yi na ostombe noandelese yoye, opo tu ku yamukule.

OOITAALI TAA LONGELE OMUWA

Omupangi omuzulu, Miss. Isabelle Moshobane, ha longo moshipangelolo Baranagwath Hospitaal, Nurses Home, Johannesburg, ngoka a li a kundana oshilongatamo shongerki yetu mokati kaayeleele ku M. Ngipandulua sho e ya talelepo petameko lyomumvo gwayi, okwa tumine oshikethatamo shomaayeleele omagano R1.00. Oye nando omukwiilongo noina tseyia igwana mbika yetu nomihoko dhaayeleele, okwa hala okulongela Omuwa gwe pamwe nooitaali ooyakwawo.

Omusamane J. Kashokulu, Geology Department Office, P.O.Box 40, Tsumeb Corporation, okwa tumine oshikethatamo lyomaayeleele kuKongo ekwatho R5.00. Efanu lye otali ka monika komeho. - Kalunga na yambeke aagandji mbaka.

M. Ngipandulua.

OSKOLA OMPEEMPEKA MOWAMBO

AAKULUKADHI NAAKADHONA LESHENI! HANDEWERKSKOOL. Oskola yiilonga yiikaha otayi tameke kOlukonda 24 Januali 1967. Aalongwa otaa humithwa komeho mokutunga oontungwa oombwanawa.

Aalongwa otaa pulwa ye ete iilya oolata 7, nomakaka olata 1, nomagadhi omashona.

Oskola otayi kala omumvo gumwe. Tuminii ndje mbala ombapila yegongalo, nonzapo yoskola, ngele mu yi na.

Uunona itau taambwa. Kalunga ne tu yambekele oskola ndjika. Oniipa 9. 12. 1966, Helmi Haapanen.

OONKUNDANA DHOMWAMEMENGERKI YOMUUSHIMBA

Ongerki okwaEvangeli paLuther yaaDuits muSuidwes Afrika, oya adhi-ka koluhodhi 1966, omuwiliki gwayo (Landespropst) K. F. Hoeflich a manoondjenda eti-14 lyaNovemba 1966. Okwa adhika a falwa kuDuisland mu-Juli 1966 a ka pangwe ando noko a manene oondjenda dhe. Ongerki ndjoka oya hogolola omuwiliki gwayo omupe (Landespropst) Otto Milk, ngoka a kala ethimbo ele omukuluntu gwoskola yuusita muSuidwes Afrika.

OMUWILIKITUMI OMUPE



Omusamane G. Menzel.

Omusitagongalo Gustav Menzel, okwa hogololwa 9/11/1966, okwa ningi omuwiliki (sendingdirekteur) gwehanganotumo lyaRyns muBarmen, Duitsland. Okwa landula omuwilikitumi H.F. de Kleine D.D., ngoka a zi mo muuwilikitumi.

Omuwilikitumi Menzel sho i ilongo nokwa yapulilwa uusitagongalo, okwa ka longa moshilonga shetumo lyaRynse muIndonesie. Sho a galukile kuDuitsland, okwa ningi omukuluntu moshilonga shokutalela oshilongatumo, unene kombinga yoshilongatumo muSuidwes. Omumvo 1960 okwa kala omusitagongalo megongalo lyomuBarmen nomulongi moskola yongerki yokombanda muWuppertal.

Omusamane Menzel oye omunyo-li gwomambo gaali "Die land van Sand en Son" (Suidwes-Afrika) na "Die kerke en die rasse" (Suid-Afrika).

Noonkondo otatu halele omuwilikitumi Menzel eyambeko lyOmuwa. Tatu mu halele oonkondo noondunge odhindji miimpwiyu ye oyindji.

Okanona Jesus oka koko moonduge, muukuluntu nomesilohenda puKalunga nopaantu.

OMUWILIKINGERKI OMUPE

Omusitagongalo Otto Milk, ngoka a kala ethimbo muukuluntu (prinsipaal) wosikola yaasita yongerki yetu noyomUushimba kOtjimbingwe, esiku eti- 5 lyaNovemba 1966 okwa hogololwa koshigongingerki(sinode) shongerki yaandowishi mOvenduka, a ninge omuwilikingerki gwongerki yaatiligane aandowishi muSuidwes (Duitse Lutherse Kerk in Suidwes-Afrika). (Eyooloko pokati kawo nomusamane Diehl oli li mpoka sho omusamane Diehl oye omuwilikingerki yaavalelwamo, ano aanama aherero noombastela ashike.)

Omusamane Milk okwa yi peha lyanakusa omwilikingerki K.F. Hoeflich, ngoka a si esiku eti- 14 Novemba 1966. Omwaalu gwaandowishi aakwaLuther muSuidwes ogwo 13, 000 nomusamane Milk oye ihe omutse gwa-wo.

Elangeko muuwilikingerki lyomusamane Milk olya fanekwa li ningwe eti- 2 lyaFebuluali 1967 mOvenduka.

Omuwilikingerki Milk okwa valwa 4/8/1911 moshilando Dortmund muDuitsland. Okuza 1930 sigo 1935 okwi ilongo uuteologi muBethel, Marburg, Tubingen naMunster. Okwa nyola ekonakono lye lyotango lyuuteologi 1935.

Omusita Milk sho ta nyola ekonakono lye etiyali lyuusita mo 1938, nokwa yapulwa, okwa longa ongomutumwa nomulongi koshilando Usambara muTanganjika. Omumvo 1940 okwe ya kuSuid-Afrika nokwa yi mii-

SHEYAVALI A PITI O- MAKONAKONO

Esiku eti-17. 12. 66 lya li esiku enenenene shili mehistori lyOwambokavangongerki. Omusita Abisai Shejavalu a piti momakonakono agehe nokwa ningi Teol. kandit. muUniversiteit yomuHelsinki. Prof. Aimo T. Nikolainen a tumbula wo sho a laleke ongundu yaAbisai, nkene esiku enene wo muUniversiteit.

Ongulohi kwa ningwa oshituthi megumbo lyetumo. Aantu oyendji okuume yaAbisai ya gongala ngashika aatumwa nomubisofi Elis Gulin, prof. Mikko Juva naagundjuka haa kala muLähetyskoti. Prof. Juva a hambelele Kalunga sho a kwatha Abisai okugwanitha omakonakono agehe.



Nakusa K. E. Hoeflich (kolulymo) omusamane.O. Milk.

longa yetumo lyaRynse muSuidwes.

Okwa kala omutumwa muKeetmanshoop nokuza 1949 okwa longo ongomutumwa nomusitagongalo mOkahandja. Omumvo 1955 okwa ithanwa e ye kuKaribib okuninga omukuluntu gwaPaulinum.

Oskola ndjika omumvo 1963 oya hangana nOngerki yOwambokavango noya ningi ihe "die Verenigde Lutherse Teologiese Seminarie" nomusamane Milk oye omukuluntu (Prinsipaal) gwayo. Sho omusamane Milk a yi muuwilikingerki, pehala lye lyuukuluntu-skola kwa fanekwa pu ye omusamane Seppo Löyty ngaashi sha tseyithwa nale. Omuwilikingerki Milk otatu muhalele esilohenda neyambeko lyOmuwa moshilonga she oshiye.

Ngashingeyi a pewa oshilonga oshinene mokukwatela komeho iigwana yomuSuidwes Afrika. Mickey Iiyambo, Kristof Shuuya na Stig-Olof Fernström ya popi wo. Hugunina Abisai ye mwene a popi. Oye wo a pe Omuwa esimano nehambelelo.

Ongame kombinga yandje nda nyanyukwa wo sho nda wapa okukwatha Abisai mokulundulula oshinyolwa she oshinene (landaturtyô). Abisai a kala shili a dhiginina nokukala muudhigu muupyakadhi owindji, ihe Kalunga na hambelwe, sho a ningi omusindani. Omafano ogendji ga fanekwa nomuUniversiteit nomohungi, ngiika tamu ga mono komeho.

Kehe esiku tandi kala pune momadhiladhilo gandje. Kondjeni shili meitaalo, Omuwa te ya mbala.

Kundweni amuhe,
kuNandjungu.

OSHINGWANIMA MEHI STORI LYAANANGESHEFA

Omunangeshefa gumwe omusamane Silas Mbokoma pamwe negumbo lye, a tseyika nawa mOwambo, okwa gandja onkundana tayi kumitha noyotango mehistolli lyaanangeshefa aawambo.

Osondaha esiku lyomumvo omupe, okwa gandja kegongalo lyawo Oshitayi oshipakete shamangwa. Oshike mbe la sha li mo?

Omwa li 1) oshiyaha sheshasho sha landwa R17.89, 2) oshitenga shuulalelo sha landwa R10.75, 3) nokayaha kiikwiila. Iiyuma mbika okweyi gandja omagano kegongalo lyaandjawa. O, tala ne ta!

Omusitagongalo Titus Ngula mOshitayi, oye a patulula oshipakete. Egongalo olyu udha enyanyupandulo molwoshiningwanima shika.

OHANDI HAMBELELE KALUNGA

Ame ohandi longo mOkaukuejo, oha tu kelele oifitukuti.

Efiku eti-2/3/66, otwa ya mokamba ei i na eenghoshi. Otwa li twa hala oku di kwata. Ndokotola ou omukulunhu woilonga yokukelela nokudii-nina oifitukuti naye opo a li. Atushe kumwe otwa li ovalumenhu 12.

Eenghoshi edi okwa li hatu di kwata ngaha: Ofaila ya kula i kwetiwe ya yelulwa pombada, fye twe i ama konima yayo. Eenghoshi ohadi konde-kwa nofaila nde tadi pupwikilwa po. Fiku olo eenghoshi oda li da handuka unene. Inatu dula nokuli okweehena kudo. Ngenge hatu ehene kudo, ohandi nuka ofaila.

Mepiyaano eli eenghoshi mbali oda nhuka ofaila. Ohaluka ondi li wete eshi ndi li momakanya matilyana. Adishe mbali oda nukila nge. Ndokotola pamwe na vakwetu efimbo olo avesho ova tilashi oitetene. Kanda li handi dulu okulikwafa, onda kala nda teeleda efyo. Onda nyanyaulwa okwoko kwange nai. Okwoko kukwao nani onde ku xwanga mokanya konghoshi imwe. Opa kala epulukuto linene. Opo onda mona oilyani ei ivali ya faduka po nonda xupa.

Onda twalwa koshihakulilo nda hakulwa fiyo nda veluka. Onda didilika, nani Kalunga ota kwafa nomeefina dinene. Inandi xupa keenghono dange mwene. O, itandi dimbwa nande okuhambeleda alushe tate Kalunga. Elia Nghihalua.

Tate Mbokoma okwa hokolola: Ngame negumbo lyandje otatu hambelele Kalunga. Otatu halele wo egongalo lyetu eyambeko lyOmuwa.

Omusamane Mbokoma okwa kala ethimbo ele miilonga yokungeshefa. Okwa hokolola, nkene omulilo gwa fikile po thilu iinima ye omuvo 1964. Omwa pilile iinima yoongunga nongunga ya kala po onene. Ihe a mono nkene Kalunga okwe mu yambeke natango nongunga oya futwa. Okwa pandula ekwatho neyambeko lyOmuwa mokungeshefa kwe. Okwa holola ihe olupandu lwe mokugandja iiyuma kegongalo omagano. Oohapu odha ti: "Eteni oshitimulongo kongulu yandje."

Ndika olyo elongo noshihololwa kaanangeshefa yalwe aawambo. Taa tseyia kutya eyambeko alihe noondunge adhihe ohadhi zi ashike pombanda kuKalunga hapalwe. Otutu halele tate Mbokoma negumbo lye uuwanawa wOmuwa.

OHO TOKELWA UNENE

Opa shiivifwa nokuli kutya, omadina ovatambuli vOmuwetu a tumwe diva kOniipa. Ove opo ngahon di shi "to kufa ndiba meembwa" paife? Vahapu va enda ongula yoshimati nde va fikifa omadina avo neefuto davo komukwetu, onawa, osho shi hole omwenyo. Ove umwe hano tuma diva embestelo loye.

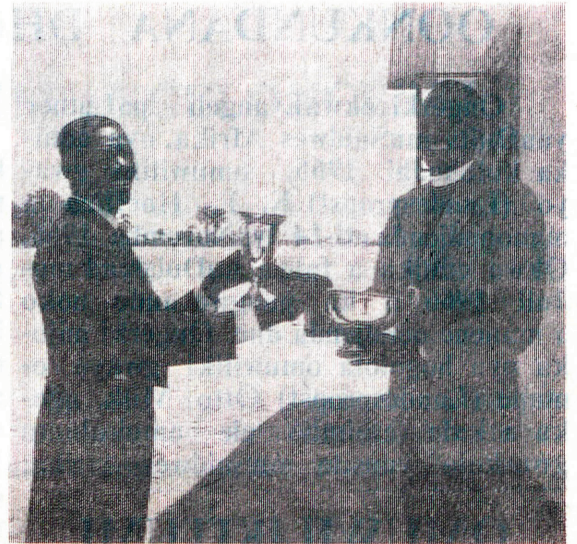
OMULONGI MUWA

Jesus oye omulongi muwa, shaashi a diinina okushiivifa ovanhu ehalo laXe. - Vakwetu, Omukulili okwe tu peni oshihopaelelwa shiwa oku hokolola edina laKalunga Tate movanhu.

Mounyuni omuna ovalongi tava yandje oihopaelelwa ii. Lesha 1Kon. Eendjovo odo otadi tu shiivifile Baal nhumbi ali novashiivifi vedina laye 450. Ovalongi eshi vefike apa, ovanhu avava va itavelifwa kuvo, ove fike peni? - Oshiponga oshinene ovanhu va shiivifwa Baal, oo ita yandje nande enyamulo nge ta pulwa sha.

Omukulili okwe tu pa oshihopaelelwa shiwa tu shiivifile ovanhu edina laKalunga. Ovanhu nge va shiivifwa edina laKalunga, opena ehapuluko linene, shaashi tave lineekele Kalunga nedina laye. Itava ifana vali nelinekelo laBaal e vakwafele, ove shishi kutya, Baal oye oshikalunga shihe shi okulineekelwa, ihashi yandje enyamukulo nekwafo lasha.

Seblon K.T. Shiuaju.



Kolumoho otu wete omusamane Silas Mbokoma nokolulyo omusitagongalo Titus Ngula ta taamba iiyuma.

TU KONDJIFENI OUPOFI

Oupofi opo u li muhapu komunhu keshe. Nande kala wafa wape nduka, ope na ngaho oupafi moshinima shimwepo. Omolwaasho Omuwambo a tile "U nyika iho liudu." Mowambo yo oupofi ou yadi mo tuundo. Unene oupofi womeendunge otu pangele mo nde tau etifa mo omhepo yoshipilili.

Tu popyeni oukalinawa wolutu. Inau twa natango. Ovawambo vahapu tava hepa ile tava pu po molwoupofi oo. Oilyani opo i li. Eemhombo, eena, eenanghupa, omanghopyo nomainyo ohaa hepeke ovanhu. Eena odi nekon djifo lidjuu.

Tu kondjifeni oupofi apa tashi dulika. Oikwatelwa yoikulya nai filwe oshisho, nai wapekwe nawa inai kala yakaka. Ou ta teleke oikulya na kale yo ayela. Eenhele dokulila nadi wapekwe. Omunhu ou a pashukila oiponga, ita nyengwa okuliamena kuyo. Eembuto domaudo nadi kondjifwe nde nadi konekwe opo tadi di. Okukondjifa eedi neemwe, ohaku kandula po omaudo. Tu kondjifeni oupofi, osheshi Kalunga iha kwafa elai. Lesha yo embo "Moshilongo shetu". otali ku pashula.

Salomo Namunjekua, Rehohoth.

OLYE E SHI MPO E LI?

Olye a tseyia omumati nguno: Simono Ndjuau (omunkumbi)? Omumati nguka okwa shashelwa kuGroot Omaruru, ofaalama yi li kombinga yOutjo. Okwa shashwa esiku 28.6.1960. Ngoka u shi mpoka e li, kwatha ndje u nyolele ndje u pe ndje ehala mpoka e li.

Ev. S. K. Shivolo,
Bus 17, Outjo.

OYOONGALELE YOVANYASHA MOUSHIMBA

Ovanyashamati ovaholike mu li mOwambo nomehalakano mOushimba kundweni medina lOmwene wetu Jesus Kristus. Muou tuna ekulilo nedimepo lomatimba noneudo tu na muye ehondamo.

Onda hala oku mu shiivifa, ovamati novashamane ava ta mu uya mOushimba kutya, otu na oyoongalele. Omo to dulu okupalula omwenyo wo ye neendya dopamhepo mokukonakona Ombibeli nomokulixumifa komesho moinima oyo tai tungu omwenyo.

Onghe ino diladila, ohandi fiipo oshoogalele shetu omu meongalo nohandi i kOushimba oko ihandi mono vali sha, ahowe. Na apa oyoongalele yeendjovo daKalunga opo i li. Otwa tota oyoongalele oudwaali 1966 padjuulufi oyo ovamati ve ina pamwe novashamane nongashi ongerki yetu yOwambokavango ye shi tala kutya osha wapala. Apa ope na eshikulafano leenhele, omo oyoongalele i li mo: Tsumeb, Grootfontein, Otavi, Otjiwarongo, Swakopmund, Walvisbaai nOkahandja. MuWindhoek otuna Windhoek Katutura naWindhoek mokomboni nosho Windhoek mostata (KleinWindhoek.) MuGobabis naLuderitzbaai omuna yo.

Meenhele edi da tumbulwa, omunyasha nomushamane to dulu naanaa oku linyolifa mo. Oyoongalele ohai ningwa mefiku olo ovanyasha ve li hoolola nge omutenya nge konguloshi. Onghe ovanyasha novashamane ohandi mu kumaida: Ino dja ashike meongalo leni u tuvikile oukriste wo ye molukonda ile mostata. Kala alushe una odjuulufi yeendjovo daKalunga momaongalelo ado.

Ovawiliki vovanyasha yo mOwambo, tumbuleni ovanyasha moyoongalele ngenge tave uya nomafiku avo. Ovamati ovawiliki novaimbifi omu mOushimba, diinineni oshilonga osho shokuwilika oovakweni melixupipiko nomomhepo yOmwene, oshilonga shihakale shopanhu ndele omOmwene. Ou a hovela oshilonga eshi shaye munye, oye omudiinini note shi wanifa yo.

Meti 27. 11. 1966, osoondaha yotete yaAdventi, opa li oshoongalele shovanyasha veengudu odo da tumbulwa. Edina loshoongalele ola li:

Omutungi wongerki.

Ovanyasha va fiyafana paengudu. Ova imba nde va hokolola. Oupenda ou nau twikile nomodula ipe.



Ongudu yoshoongalele mostata muWindhoek.



Ongudu yoshoongalele mokomboni muWindhoek.

OMWENE OTE KU KONGO

Omwene Jesus okwa tonga ta ti: Ondi na natango eedi dimwe diheli moshiunda. Ndele onda hala oku di etamo ndele taku kala omufita umwe noshiunda shimwe.

Elaka eli laJesus inali fya none-na, otali longo movakwaneongalo ovo vena omwenyo nde otava wanifa elaka eli momaumbo avo, momikunda ile meenhele adishe omo muna ava inava itavela ile vehe li moshiunda shOmwene.

OmuKriste keshe oye omutumwa waKristus nakeshe umwe okwa pewa elaka eli: Ohandi mu tumu mu yeko

mu ke va konge mo, mu va ete poyelele. Jesus ta ti: Onye omongwa wedu na onye ouyelele oo tau minikile apeshe, opo ookaume nookahewa va mone oilonga yetu iwa.

Elaka tali ti: Omwene ote ku kongo. Ita kongo ashike omupaani, ndele ote tu kongo atushe omukriste nomupaani, tu ningi vomoshiunda shimwe.

OmuKwetu, Omwene ote tu kongo note tu ifana tu ye moshiunda shaye. Ohatu itavele tuu ekongo eli lOmwene? Otwa hala tuu tu kale meongalo lOmwene? Tu yeni kuye ote tu teelee, osheshi ota ti: Ou te uya kwaame itandi mu te po.

Nd. E. Ndevaetela.

OSHIGONGI SHAA- KRISTE AYEHE MUELMIM

Oshigongi shaakriste ayehe yOngerki yetu Onkwaevangeli paLuther yomOwambokavango (Elok), sha gongala muElim 16-18/12/66, osha li sha yambekwa kumwene gwOngerki Jesus Kristus.

Nonando aakriste oyendji inaa mona ompito okuholoka, mboka ye ya oya kala pamwe naJesus mpeyaka. Oshigongi osha tamekwa nohungi komusitawiliki gwegongalo Elim tatekulu E.Shilongo. Okwa lesa Mat. 14: 17. "Itedhululeni, Kalunga ina hala sha shilwe momuntu eitedhululo omuntu a taambe oshilongo shaKalunga. Omuntu oopaleke oompadhi dhe. Oshilonga shetu mokulongela Kalunga okwiitedhulula."

Omuwiliki gwoshigongi tate J. Amakutuwa okwa lesa Eps.133 nokwa ti: Ehangano lyooitaali olyo endhindhiliko lyehupitho." Peha lyoshitayingerki shOndonga omunyoli a gandja omakundo nomahalelo moku-lesha Kol.3:12-17 nokwa holola endhindhiliko lyaahogololwa yaKristus olyo okuzala uukwatya waKristus. Omupangi Angaleni Sem peha lyaakavango a lesa Eps.107 nokwa holola epandulo lye. Osho wo omusamane

Lukas Ashipala gwokuWalvisbaai a eta ekundo peha lyaakriste yomUushimba EPs.133 na EPs. 23 nokwa.holola enyanyu lye.

Omumbisofi L.Auala a kundu oshigongi nokwa pula omapulo nga: Omolwashike tatu ihepekwa ngeyi okweenda oondjila oonde? Ope nompumbwe yashike? Eyamukulo: O-twa pumbwathaneni ngaashi oombas-kena dhi li metungo, shaa ndyoka oya pumbwa oonkwawo opo etungo li kale lya thikama. Okwa lesa Joh. 17: Opo ya kale yamwe.

Omusamane tate T. Shindongo a lesa Luk.7.29-35 nokwa holola edhiladhilo enene lyaKalunga olyo: "okuhupitha. Tu dhiginine omadhiladhilo ngaka, opo twaa wilike Kalunga tu tye: Kalunga enda mpa, tya ngeyi nenge ando u ninge ngeyi, awe. Omasipa omanene ihaga pi ombiga yimwe. Petrus okwe shi yekelele okuwilika Kalunga ihe Jesus a ti: Shivalwe u ninge ngaaka. Okuwilika Kalunga osho oshiponga."

Omusamane E. Angula a ningi Otundimbimbeli paMark. 8.22-26. Ehuku Jesus te tu pula: "Oulwete ko sha?" Oshilonga shomutondi okutseya aantu omeho. Otatu tegelelwa tu fale ooyakwetu, tu ya humbate kolutala kokutya megalikano tu ya fale kuKristus. Omuwiliki gwoshigongi J.Amakutuwa, a hololele omapulo gaali me-

dhiladhilo li li 1Petr.3:1-7 nokwa indile oshigongi shi kundathane muungundu omapulo ngaka noku ga yamukula. Omapulo oongaka:

a) OSHIKE TASHI YONO OONDJOKANA?

b) OSHIKE TASHI TEGELELWA MOONDJOKANA?

a) Eyamukulo kepulo lyotango: Shoka tashi yono oondjokana osho UULUNDE tau zi kuSatana. Uulunde owo tau tu yoolola naKalunga, tau eta eyooloko moondjokana. Oshoka uudhinikalunga nuukwapata nokwaa na ohole, ayihe mbika oyo uulunde. Osho wo omaluhoko nuunkolwe, ondjahi nuungame, uutondwe, okwaagalikana, omatopoko geliko lyomoondjokana, na mbika ayihe UULUNDE tau teya oondjokana. Shoka tashi yono oondjokana dhaakriste osho iyimati yonyama, Gal.5:19-21 naayihe mbika oyo uulunde tau teya oondjokana wa tsa ondumbo nehalo lyaKalunga.

b) Eyamukulo kepulo etiyali: Shoka tashi tegelelwa shikale moondjoka dhaakriste osho: Etilokalunga, edhiminopo lyoondjo neitaalo tashi ti Kristus ta pangele moondjokana Gal. 5:22-26. Oshoka iyimati mbika ngashi ohole, enyanyu nombili noshu tuu ayihe ohayi zi mekwatathano naKristus.

Ekwatelokumwe: Oshigongi osha dhimbulula kutya, aakriste ayehe, ngele taa ende muyelele nokuhempulula oondjo, nena otadhi dhimwa po, nena otapu kala ehangano pokati komuntu naKalunga nehangano maanandjokana, tala 1Joh.1:7-10.

Ando wa dhimbulula elago li li mehanganu lyooitaali, ando ito vulu okukala ihoo ya koshigongi nga shika. Kambadhala u tale moshigongi tashi ka landula, ndi tale ngele ito ka tya tuu: Kandi etha ko we!

Otwa pumbwathaneni ethimbo alihe tu li molweendo, tu ambidhidhathani. Peha lyoshigongi,

Petrus Shipena.

OMAKUNDIFO ELEKELO

Omushamane William A. Dudde, hamushanga (Senior Editor) weenghundana domOshiingilisha meembelewa dOngongahangano yovakwaLuther muGeneva, okwa efa oshilonga shaye nde a tambula shimwe shipe. Okwa yandja omakundilo ongelekelo keengerki eenghwaLuther mounyuni. Elekelo laye otali landula:

Oshifonghundana eshi handi mu tumine ngaha, osho shaxuuninwa moilonga yange 1966 meembelewa edi. Ohandi mu kundu nohandi mu halele ouwa momudo mupe.

Natango tuu ohandi nyola lwaxuuninwa, eshi handi fii po oshilonga shange, eshi nde mu yakula mOmwene moku mu tumina eenhundana mOshiingilisha. Ohandi pandula elongelokumwe mefimbo olo nda kala koshipundi eshi.

Hamushanga ponhelele yange oye omushamane Mellblom. Ota hovele oilonga yaye muFebuluali. Ohandi mu yandje kunye nelineekelo kutya, ote mu yakula nawa nde tamu longele nawa kumwe.

Mefimbo loilonga pamwe nanye, ohatu lineekele otamu dimipo noku-havalula omapuko mwe a mona meenghundana dOshiingilisha. Osho otu nokulonga kuyela, osheshi Omwene ote uya diva.

Omufitaongalo Dudde, okwa kala ha tumine Omukwetu eenghundana odotadi di meembelewa dongongahangano yovakwaLuther mounyuni. Hamushanga wOmukwetu luhapu e di tula mOshiwambo nde twe di lesa mOmukwetu. Okudja moilonga kwomushamane Dudde okwa shiivifwa nale mOmukwetu wodula 1966. Ohatu mu halele elao moilonga yaye ipe oyo ta hovele, osheshi oyokutunga ongerki yaKristus mounyuni.

OOKUUME KOMUKWETU.

Ookume kOmukwetu oyendji, oya nyolele Omukwetu. Oya holola enyanyu lyawo ye li etelwa moshituthi shOkrisimesa yomumvo 1966. Oya ndhindhilike shoka sha kala momvula ndjoka ya pita, ihe oya holola einkelo lyawo neigandjo lyawo kuKalunga, oye e ya endithe momumvo omupe.

OUNYUNI OTAU TONGO SHIKE

OYENDJI YA DHANA OKRISMESA MUJERUSALEM

Pethimbo lyOkrimesa yomumvo 1966, okwa popiwa kutya, aantu oyendji yendji oya dhana oshituthi shOkrimesa moshilando Jerusalem. Aantu ya gongala oyendji moshilando shoka. Oya zi miilongo yi ili noyi ili yuuyuni. Oyendji inaa enda nale muJerusalem ihe ya kunguluka koombinga, ya hala okutala oshilando moka mwa valelwa omukwaniilwa guuyuni Jesus Kristus.

Nonando aantu yuuyuni ayehe inaa thika muJerusalem, ihe onkene oshituthi shOkrimesa osha dhanwa kaantu yigwana yuuyuni auhe, yomalaka agehe. Aapagani naadhinikalunga wo ohaa nyanyukilwa oshituthi shOkrimesa.

Jesus oye omukwaniilwa guuyuni auhe, onke aantu yuuyuni oye na okutsa oongolo koshipala she nelaka kehe li na okuhokolola kutya, Jesus Kristus oye Omuwa.

OMEVA A KUNGULULA MUITALIA

Multalia omwa dja eenghundana. Vati odula oya loka neenghono pehovelu laNovemba 1966, nde omeva okwa kunguluka efundja. Oitukulwa inene youmbangalanhu nopokati kaItalia, oya kungululwa nehanauno, unene muVenesie nomu Florece. Efundja eli ola talika kutya ola eta oluhepo komaliko aItalia nde tapa pula shihapu molwokuwapeka osho sha nyonauka po.

OMUPRESIDENDE SWART

Omupresidende C.R.Swart, okwa dana paife oshivilo shedalo laye oshiti-72. Eshi osho oshivilo shaye tashikala shaxuuninwa e shi dana moupresidende. Omudo tu ou osha popiwa kutya, ota ka efa oshilonga osho.

AAKATOLI NAA-ANGLIKANI TAA KUNDATHANA

Multalia mwa kundanwa kutya, aawiliki yomoongerki ndhika mbali, otaa kala moonkundathana muRoma multalia. Otaa gongala ya kundathane okukala kwoongerki ndhika nkene kwa tameke nonkene kwa kala nonkene taku kala nootekiste dhOmbimbeli nkene ye na oku dhi longitha.

EDU LAKAKAMA

MuChili moumbuwantu waAmerika, edu ola kakama omafiku a dja ko. Ovanhu kevahapu unene va fya, ndele ovahapu va lemanekwa nomatungilo mahapu okwa ngumauka po eshi edu la kakama.

SUIDWES OTALI SIMANEKE OMUSAMANE VERWOERD

Okutameka 6 IyaJanuali 1967, oostombe dhi na efano lyomusamane Verwoerd, otadhi landithwa mooposa dhaSuidwes. Pamwe noostombe dhefano lyomusamane Verwoerd, otaku holoka ishewe oostombe mbali. Yimwe oya fanekwa omuti (kameeldoringboom), tau holola uupenda wanakusa. Muyimwe omwa fanekwa emanya, tali holola uukukutu wuupenda we.

OMUSHAMANE U THANT

Omushamane U Thant, hamushanga akula waV.V.O, okwa li a hala okweefa oilonga yaye, shaashi e-fimbo laye (diensternyn) la li la xula.

Omadu 121, oo oilyo yaV.V.O, oye mu hoolola vali nde ye mu indila aha efe oshipundi shaye nde a twikile natango eedula 5. Paife okwa itavela etokolo olo lokushunamo, nde oye hano natango hamushanga akula (Sekretaris-generaal) waV.V.O.

VATI OMayOKA OO EDIDILIKO LODULA

PuKoës nomomudingililo washo, otapa monika omayoka mahapu, tae uya nomomaumbo. Otae uya nomomaumbo taa di moixwa, osheshi moixwa oupyu ou li mo wadenga pombada. Vati meembulu nge tava mono omayoka mahapu, otashi ti odula otai ka loka nawa.

OKWE LIXWIKI

Keetmanshoop. - Omukainhu ombaatili Catharina womuGrunau, okwa fya koipute yomundilo. Okwa pya eshi oprimusa (efiya) yaye ya topa ya hangika meke laye. Omahooli a xwama okwa ndwafukila monhulo nomoshipala shaye. Okwa twalwa neendelelo moshipangelo muKeetmanshoop nde opo a fya diva.

EWI

LYEVANGELI

MORADIO

ometa 31
otundi 8. 30.

15 Jan. 1967

Oandaha: I. Ninda na E. Nghikembwa

22 Jan. 1967.

Oandaha: J. Amakutuwa T.Heita.

19 Febr. 1967.

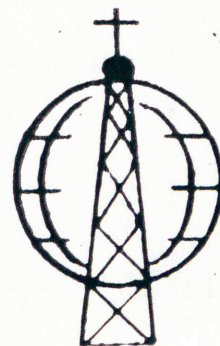
Ohatu tameke okulesha embo:
"Omona wchamba."

Oandaha: P. Andreas.

26 Febr. 1967.

Ohatu twikile okulesha "Omona wohamba."

Oandaha H. Nakamhela.



AARUSIA YA LAMBELITHA OSHITUKI KOHANI

Akuhe mooradio nomiifo okwa tseyithwa kutya, aarusia oyu umbu pomasiku ngaka ga zi ko oshituki shawo, Luno 13, kohani nosha lambele ko nombili.

Oshituki osha tumu kevi omafano ngoka sha faneke kohani nopwa tseyika ihe omaukwatya gokohani nkene ge li. Aarusia naayamerika oya kala taa tala oye ta ningi mwene gwohani, onke ya kala nokulalakana kehe gumwe polwe ya lambele niikonakonindhila yawo kohani.

A KOFA NDE A WA MOSHIHAUTO

Omulaule umwe okwa dja mefyo. Okwa li a londa moshihauto mokakoto kokonima, oshihauto sha li tashi tondoka. Omulaule mboli a kofa nde ta u mo moshihauto. Ina mona unene oshiponga nde a hakulwa moshipangelo muKeetmanshoop. Vati omumenhu okwa li e li omutumba komunghulo woshikoto eshi a kofa.

AUGUSTINEUM TAI XUMU

Okahandja. - Oskola yokutekula ovalaule mOkahandja, omudo 1967 oyoku ka tembukila mOvenduka. Pexulilo lomudo 1966 oskola oya xula novalongwa 350. Neudo okwa tengekwa omuvalu wovalongwa otau ka fika pu 500.

ENONGELO LOVAYAKULIONGALO

Meshiivifo letu lotete (Omukwetu No 24/1966) omolu oiongalele tai ka ningwa mEnongelo Lovayakuliongalo, omu nomapuko amwe. Onghe paife ohandi shiivifa vali eshikulafano letu loiongalele ixupi yoneudo (didilikeni unene omafimbo oiongalele).

- 15.-28.2. oshiongalele shovawiliki vovanyasha vomaongalo (ofuto omolu oikulya 60 c)
 6.-18.3. oshiongalele shovawiliki veengudumbibeli (60 c)
 28.-31.3. oshiongalele shovalidiliki koikolwifa vokOukwanyama (20 c)
 3.-6.4. oshiongalele shovanangeshefa (20 c)
 11.-15.4. oshiongalele shoudiakoni shovafita vomOukuanyama (ohatu hovele potundi onhi- 3 komatango)
 18.-21.4. oshiongalele shovafita aveshe vongerki
 20.-6.5.7. oshiongalele shovawiliki vougudu voudiakoni (60 c)
 5.-7.7. oshiongalele shoshitayingerki shOukuanyama
 10.-7.-12.8. oshiongalele shovalumenhu shokukonakona Ombibeli (R 1. 00)
 14.8.-16.9. oshiongalele shovakainhu shokukonakona Ombibeli (R 1. 00)
 25.9.-30.9. oshiongalele shovakulukadi vovalongi veefikola doshiwana (30 c)
 16.10.-30.11. oshiongalele shovakulukadi vovadiakonilongwa.

Oiongalele ei otai ka hovelwa noxungi mefiku lotete loshiongalele (nge-nge efiku limwe inali tumbulwa).

Vänö Simojoki.

ILA U TALE

Onda hala okupopya novanyasha nye ovaholike. Nye ava mwa shashe-lwa medina laKalunga katatumwe. Omwa dimbulukwa nawa ouwa ou wemu dila meshasho. Ondi shi shi omu na yo ehalo eli ovapaani va mo-ne ouwa oo nye mwe u mona naale!

Ndele ne olyelye te va ulikile ondjila ei? Ovapaani ava inava teele-la umwe womovafi a nyumuke, oshe-shi itave ke mu itavela vali. Oove va teelela.

Onda hala oku mu dimbulukifa eendjovo domuudifi umwe womeehani edi ta ti: "Onde uya kwoove opo ndi ku etele elaka lexupifo, osheshi inandi hala okumwena naashi nde shi uda nonde shi mona."

Ove oto i nelaka lilipipo kovapaa-ni vomoshilongo sheni, ile vopoushiinda sheni? Omunyasha omuholike, natango tuu ovapaani ove yadiko. Ino hala okuulikila nokukwafa nokuxupififa nande omwenyo umweu-mwe, u mu etele a pandule?

Ondi shi shi opena oyiimbi no-ikelela ihapu, unene tuu mounyuni ou wexumokomesho, ndele nande ongaha, ila u tale!

MuAngola letu, mOuninginino wetango oshoyo mOushilo waShingunguma, apeshe ovapaani otava kuu. Omo ve li moidila nomoimengha, meendudu dihe shi kutumbulwa tava kondjele omwenyo, ndelene kave u wete. Ino hala oku va kwafa?

R. N. Shikukumua.

OSKOLA YAAVALITHI KONANDJOKWE

OTAYI TAAMBA AALONGWA AAPE NUUMVO

Mboka taa taambwa oyo mbaka:

AAKADHONA mboka ya pita Junior Sertifikaat nenge Matrika.

NAAPANGI mboka ye na onzapo ya Register.

AALONGWA taa konakonwa eti- 30 Januari 1967, ponti - 9 yongula.

Mboka ye nehalo okuya moskola ndjika, naa tume

oombapila dhawo kOnandjokwe manga eti- 25 IyaJanuali inaali thika.

Oozapo ndhika tadhhi pumbiwa:

1) Onzapo yegongalo.

2) Epopilo lyomukuluntu gwonasalesa moka ta longo.

3) Onzapo yahugunina yoskola (St. VI. J.S.)

4) Onzapo yuukolele.

AALESHI TAA NYOLA

A. Titus Otjiwarongo, ota ti ngaha: Paife ohatu udu omakolokoto. Ohatu kundana eenghundana di nyemateka. Osho pe na ovanhu vahapu va teelela emanguluko. Ofye ovakriste otwa teelela emanguluko efiku hatu ka fika moshilongo sha Kalunga. Ngeno Kalunga e tu ame koyounyuni ndele e tu fikife meulu laye efimbo laye nge tali fiki.

W. W. Hango, Oranjemund, ota pandula omauvitho gomOshiwambo he ga uvu nawa moradio ye pomathimbo gayo. Ota ti: ngoka wa toola uumaliwa noho uvu ko omalaka gaatiligane, onawa to lande oradio yoye. Ngoka iho takuma, otashi vulika u tololkelwe. Unene mboka ye li kokule nomahala gokugongala poohapu dha-Kalunga.

Lukas Hipundja, Oranjemund, mombapila e tu nyolela ota ti ngaha: MOMudo ou Mupe, tu yenimo twe lixupipika. Ngenge tu li ngaha, nena Kalunga ote tu longo ondjovo yaye. Ounyuni otwe u koneka nghe wa tya nde twa pewa tu kale mevangelilaye. Eameno omo hatu li mono, exupifo omo hatu li mono nde nokukalamwe-nyo kuwa.

M. R. Ashipala, Berg Aukas, ota ti: Ohombo yokutula eliko mumwe ne-fyuululafano tali wilikwa pamaudafano, otai pumbiwa shili. Ngeno tu landule ohombo i li ngaha, ngeno omakolokoto haa kala meehombo molwo-ukwapata, otaa kandulwa po.

OLYE TA YI KOSHIPUNDI SHAHEELU?

Elenga limwe mOukwanyama, nakufya Nehemia Shovaleka a fya 1966, ponhele yaye inapa tulwa natango omunhu. Ope na omafaneko, ku ye omutekulu umwe ile kuye Nima nde inapa tokolwa sha natango. Ewi lovakwashilongo ohali pwilikinwa nde hashi dulika yo ku landulwe omahoolo amwe.

"OMUKWETU" oha zi mOniipa- Omukuluntu gwoshifo /Hoofredakteur: Omumbisofi Leonard Auala, amushanga gwoshifo/ Redakteur: Leonard M. Shemuvalula, Oniipa, Pk. Ondangua. -Ondando komumvo mOwambo 60c, mUushimba nOkavango 80c. Oofuto nomambestelo naga tumwe kOmukwetu, Oniipa, Pk. Ondangua. -Moka hashi nyanyangidwa: FINSE SENDINGDRUK-KERY, OVAMBOLAND, S. W. A.