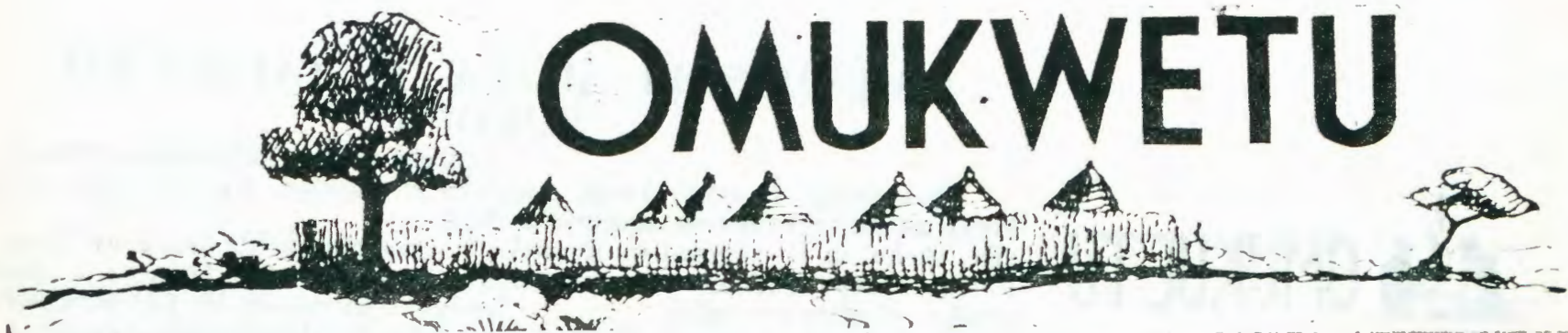


# OMUKWETU



No 5

MALITSA

1966

## EITAVELO OTALI TU PE SHIKE?

Mateus 15: 21- 28.



*Ovadali ova li hava twala ounona vavo tava vele ku Jesus. Oye okwe va kuma nde e va velula.*

Omwalikadi omukanani a li moluhepo lekwapelo lomona waye e na omhepo ya nyata. Taku tiwa, eshi tuu a mona Jesus, okwe mu dimbulukwa. Oye o mona wa David e yadi ekwafonoku na onghenda. Oye ta dulusoku taata omhepo ya nyata.

Eingido laye: "Omona wa David, file nge onghenda, omona wange okakadona ota hepekwa unene komhepo ya nyata!" Evangeli otali ti: Jesus ine

mu nyamukula. Ovahongwa va popila omwalikadi. Ova lombwela Jesus e mu nyamukule diva, ndelene Jesus okwa nyamukula nekumwifilaka: "Ame onda tuminwa eedi edi da kana dokeumbo la Israel, odo adike!"

Omwalikadi okwa twa eengoloke-emhadi daye ta ti: "Omwene, kwafenge" Jesus okwa nyamukula vali nekumbikolaka lidju unene. Omwalikadi a fa a koneka nale elaka eli a pewa

kutya, ovayuda tava popifa ovapaani cembwa.

Omwalikadi ou eitavelo okwe li pewa, kali fi laye mwene. Eitavelo lomunhu itali eta ekwafonoku ekwaulu. Eitavelo lomwalikadi okwe li pewa momanya, mukulo a Jesus. Ina kukutika omutima waye. "Nge tamu udu ondaka yaye, inamu kukutika omutima deni!" Indila alushe u wedelwe eitavelo. Vilho Kaulinge.

## OMUMBISOFI AUALA TA TALELE PO EUROPA



Malitsa 1966

### OMUKWETU OKWA FA OMENYE

Ofye ava hatu longo oshifo eshi shOmukwetu, otu udite Omukwetu okwa ndjanga ngaashi omenye. Oku na ovaleshi vahapu, ovo va nyakukwa shili moku mu lesa. Kave na ounye. Momwedi umwe luvali ohatu tumine ovaleshi ve dule 6,000 nde ovaleshi vape otava hapupala keshe efimbo. Ove auke pamwe ino mu mbestela nantango.

Omolwa shike Omukwetu a hokiswa ngaha kovanhu ve fike opo? Tala: Omukwetu okwa yooloka ko koifo i lili noi lili oyo ho mono. Pokati kaye noifo ikwao ope na eyooloko linene. Omukwetu oye oshifo shoukriste. Mu ye ito lesa mo ondjovo tai lalakane ne owii. Oye omunwe tau ku ulikile kondjila ya yuka. Ota udifa Kristus komunhu keshe. Okwa shangwa melaka letu vene omutaka, ito pumbwa okutolokelwa ngashi moifo ikwao. Oye otefona yetu tu tye. Omo hatu talelafana po novaitaveli vakwetu mu ei:

Omukwetu ta tu omukumo. Ota hekeleke moluhodi. Ota longo eendunge. Ota kondjele eehenokomesho loshiwana li kale la yukilila, lihe na oinghilikiti. Ota longo ovashima ouningo. Ota hanyene nge hatu nyono. Ote tu hepaululile osho tashi ningwa mOngerki yetu keembinga. Oye ke na nande onhondo. Eembilive dihapu tadi tu hange, otadi pandula oshilonga shaye shepukululo. Mu mbestela uta!

### KOSHIGONGI MU JOHANNESBURG

Omukuluntutumwa Arvo Eirola na amushanga gwOngerki Matias Nghipandulua, oya yile koshigongi mu Johannesburg sheti-24-25/2/66. Oshigongi shika oshuukumwe woongerki oonkwa-Luther mu Suidelike Afrika.

Omumbisofi Leonard Auala, otalaleke aaleshi yOmukwetu nongerki ayihe, shoka ta yi kiigongi yi ili noyi ili mu Europa methimbo lyoomwedhi ndhika Malitsa na Apilili.

Ota talele po Finland, Duitsland na England. Ota indile omagalikaneno gaamwameme yongerki yetu, ge mu landule mpeyaka. Ota ka tumbulila miigongi mbiyaka omakundo gongerki yetu.

Pathaneko lyelandulathano omumbisofi Auala ota tuka nondhila mokapale ka Venduka eti-26/2/66, sho ta yi mela lyondjila nokwa tegelelwa a

lambele ishewe mOvenduka mokugaluka eti-30/4/66, Kalunga ngele e shihala.

Omumbisofi ota kala e na iipopowa mu Suomi. Mu Helsinki ta popi ethimbo lyoominute 10. Ota popi ishe-we miilando: Hämeenlinna, Tampere na Turku. Mu Turku ta popi oshipopiwa she moradio yokutuma oohapu (uitsaai). Ota talele po aakuluntu yetumo nota tsikile ku Duitsland na England. Ota tuka noondhila dhi ili nondhi ili. Ota kala miigongi peha lyongerki yetu ayihe, onke a tumbula: "O-tandi pumbwa omagalikaneno gaamwameme, ga hambate ndje."



*Aron na Hur oya kwata omaako ga Moses noku ga yelutha pombanda, aa-Israel noya sindana.*

### OIKWATAKWATA I NYIKA EDILO

Johannes P. Ndemuueda, Box 1831, Windhoek, ota nyolele ovaleshi ngaha:

U wete ko, onale nda hengahenga opo ndi mone oshifo shOmukwetu. Fiyo omodula 1962 inandi shilesa. Modula 1965 onda shangela kombelwa yOmukwetu kOniipa, opo ndi pule nawa. Ombedi oya li po, osheshi inandi tuma ekutu ndi peweenyamukulo.

Kapa li mboli oudjuu. Hamushanga wOmukwetu, omushamane L. M. Shemuvalula okwa nyamukula nge diva, kutya nandi tume diva 80c ndi tuminwe Omukwetu. Osho nda ninga. Taa, mboli kape na oudjuu. Pamwe ope na umwe wa hala Omukwetu nde ku wete eshi to ningi. Ino kwatakwa, mbestela. Nge we linyae ponhonde to kufa po 80c, oto lesa fiyololo. Ondado yOmukwetu inai fa yotombo kodula.

## EGUMBO KEHE TALI PUMBWA OKANDJUGO



*Aanegumbo ohaa longitha okandjugo.*

Eeno, otatu  
pumbwa shili  
okandjugo ko-  
kuya kondje,  
tu kale nawa notwaa  
taandelithe omavu nuupuka.

### Nkene OKANDJUGO TAKA TUNGUA:

1) Tango to tala ehala ewanawa - kokule kashona negumbo lwokuuninginino opo ombepo mokupepa yaa itse megumbo. Ishewe okandjugo o-taka kala kokule nomadhiya nomithima dhomeya, opo omeya gaa nyatekwe nuupuka noombuto dhomavu.

2) To fulu oshilambo oshishona ihe oshileleka.

3) To tula iipilangi iyali koombinga noombinga dhoshilambo.

4) To tula ishewe iipilangi iyali komitse nopooha, ihe ya shigakana. Pokati oku nombululu.

5) To ningi oshisiikilo niipilangi iishona u siikile ombululu.

### Nenge:

3) To siikile oshilambo niipilangi.

4) To tungu okaketha kokukuu-tumba, ke noshisiikilo.

5) To tungu okandunda ke nomweelo.



*Okaketha kokukuutumba nkene ka tulwa nawa kombanda yiipilangi yokoshilambo.*



*Omusamane ota fulu oshilambo shokandjugo.*

**AANONA NAANEGUMBO AYEHE OTAA PUKULULWA OKULONGITHA OKANDJUGO** yaa nyateke iipilangi noya igilile okusiikila ombululu. - Ombululu tayi siikilwa nawa opo oondhi dhaa mone ompito okutaandelitha omavu.

Okandjugo una ku udha, naka filwe po mbala. Opo ihe ku ningwe okandjugo okape.

Okandjugo oko ka fa ka dhinika mokutala, ihe mpoka aantu ya hala okuhuma komeho, taa dhiginine uundjugo. Ihaa nyateke iihwa nenge omalundu. Notse atuhe tu shi shi nawa kutya, uundjugo tau kwatha muundjolowele waantu.

Omupangi  
Ruusa Namuhuuya.

# EYAPULO LYAAPANGI

Esiku 9/2/66 pombali ketango, mongerki mOniipa omwa yapulwa aapangi aape 11 komumbisofi Leonard Auala.

Aalongwa mbaka oya kala moskola omimvo ndatu mOnandjokwe. Oya longwa noya dheulwa nuudhiginini. Oya nyola ekonakono lyawo noya pita.

Aantu ye vule 50 oya gongala mongerki. Aalongi yawo, aakwanezimo yawo nookuume oya gongala mo wo oyendji. Aayapulwa ye ya melandulathano yo ya zala omizalo omi-tokele dhuupangi.

Omumbisofi naayakuli ye, ye ya mongerki. Mongundu mwa li wo omukuluntutumwa Arvo Eirola. Omumbisofi nongundu ya thikama koalitari naayapulwa ye yi kundukidha. Omumbisofi a leshe: "Ilya oyi li po oyindji, ihe aalongi aashona. Galikani Omuwa gweteyo a tume aalongi meteyo lye." Okwe ya kumike opendji.

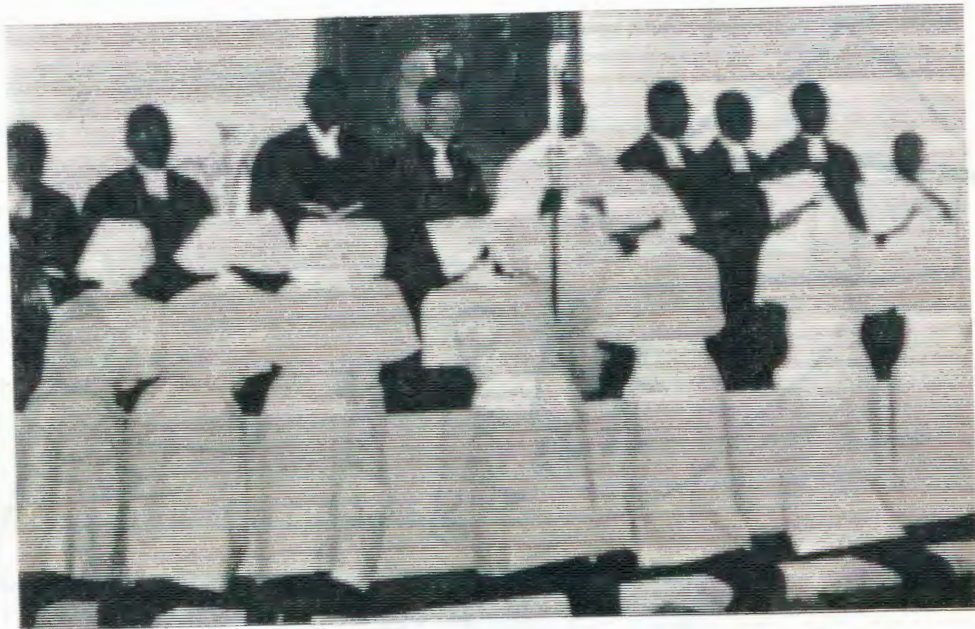
Opo aayakuli yomumbisofi oye ya leshele oohapu dhOmbimbeli. Aayapulwa ya hempulula eitaalo lyawo. Ya yamukula omapulo. Ya galikana egalikano lyomupangi noya lalekwa nuuyamba nokutentekwa iikaha.

Euvitho olya ningwa komukuluntutumwa, mokulesha Eps. 100: 2. Okwe ya kumagidha, ya longele Omuwa nenyanyu.

Mongundu ndjika 20 omwa kala wo Ruut Mushongo omukavango. Tu nenyanyu sho omukavango gwotango a kala moskola yaapangi a yapulwa ngaaka. Oye omupangi gwotango a yapulwa ngaaka mOkavango ayihe. Oshituthi she sha ningwa kOkavango natango. Moskola yaapangi mu na ngashingeyi ishewe aakadhona yane. O! Okavango otaka humu komeho.

Peha lyongundu 20, omupangi omupe Ruut Ndevahoma (omukwanyama,) a popi ehistori lyokulongwa kwawo. Okwa pandula aalongi yawo ye ya longo nuudhiginini. Aapangi aape ya imbi oondjimbo oombwanawa. Pehulilo omumbisofi a halele ayehe uwanawa nokwa hulitha oshituthi nelaleko nuuyamba.

**LONGELENI OMUWA  
NENYANYU**



*Mefano ndika omumbisofi nondhimbo ye oya thikama moaltari, Aapangi aape ya tsu oongolo noya lalekwa nuuyamba.*



*Ovahakuli vape va yapulwa. Momukweyo wopombanda ovo: H. Havfiku, M. Haishamina, E. Nakapunda, F. Uahengo, S. Titus na M. Ndateuapo. Pedu ovo: Nd. Haukelo, Nd. Shekudja, R. Ndevahoma, V. Shaende na R. Mushongo.*

## OMANENEDHILADHILO GIINYOLWA YUUKRISTE OGO:

Okukwatakanitha omitima dhaantu. Omuntu ngele ke na edhiladhilo ndika, ota ende e li awike. Oto vulu okupula: Olye ano nguka? Oye omuntu a shitwa efano lya Kalunga, oshilonga shohole ya Kalunga. Oye tuu lela ngo e nokufatululilwa Jesus. Oye tuu lela ngo e nokutseyithilwa oshili.



*Minikila mboka ya kaka*

## MONANDJOKWE

Konima yokathimbo aapangi aape pamwe naakwanezimo naalongi yawo ya gongala ishewe mongulu yoskola. Mpeyaka oya topolelwa oonzapo. Aalongi yawo ya popitha o-yana. Aakwazimo ya pewa wo ompito okutumbula enyanyu lyawo.

linima ayihe osho ye ende nawa ngaaka. Konima aakwazimo sho ya makele okapyu, oya halakana ihe nehabelelo moomwenyo dhawo. Ene-nedhiladhilo olyo: "Longeleni Omu-wa nenyanyu."



*Aapangi oya topolelwa oonzapo dhawo.*



*Omuhakuli Ruut Mushongo, omukavango wotete a yapulwa mehistori lokavango.*



*Kolumoho mefano ndika omu na omupangi Ruut Ndevahoma, ngoka a popi peha lyooyakwawo 11. Kolumoho oku nomupangi Martha Ndateuapo.*

### ONDI LI PAMWE NANE

Mat. 28: 16-20

Etumbulo ndika lyohole olya popiwa kOmuwa Jesus mwene ta lombwele aalongwa ye, sho te ya tumu ya ku uvithe elaka lyevangeli lyehupitho mokati kaana yaantu muuyuni mbuka. Ote ya tsu omukumo yaa

tile nando. Opo e li puyo omasiku agehe.

Oyo kaa nokutila sha, oshoka oye nomusita omudhiginini. Ondjaji Jesus kristus mwene goshigunda sho-nzi opo e li puyo ote ya popile kukehe oshiponga tashi ya tsakanekke.

Elaka ndika natse wo aalongwa yOmuwa Jesus yopethimbo ndika o-

tali tu opalele. Otse tu li kevi ndika lyu udha iiponga oyindji yomangwandjagulo nomasheko. Itatu vulu okutila, oshoka otu na omusita omwanawa Jesus Kristus. Opo e li putse nonena. Otatu mu pandula sho e tu thikikitha nomOmumvo nguka omupe. Lesha Eps. 31: 19, na Gal. 5: 19-21.  
Julius Sh. Iilonga

## ONDA HALA NDI LOMBWE LE OVAWAMBO

Omuhakuli mupe Martha Ndateuapo, okwa popya meenghundafano ta ti: "Onda hafela oshilonga shange shokuhakula. Unene onda hala ndi yakule oshiwana sha meme, osheshi mu novanaudu vahapu va hepa nde tava pu mbwa ekwafo lange."

"Inamu eta vali ounona novanaudu va pewa nale oimbodi." Ndateuapo a tya. "Omiti kadi hole okulumbakana noimbodi. Nye hamu fufya ovahakuli. Hamu ti, omunaudu ina pewa oimbodi keumbo, nani okwa pewa." a weda ko vali. "Tu pendukeni shili tu dje mo moinima ikulu, unene mu oyo ya puka, osheshi ope na yo oinima ikulu ya yuka."

Pehulilo leenghundafana omuhakuli okwa ti: "Oshilonga shouhaku oshinene, onda hala ovalongwa ovo ve li paife mofikola youhaku, ve lilonge shili, opo va ka pite nawa omakonakono."



Omuhakuli Martha Ndateuapo.

## OMUMINISTELI WOTETE WA INDIA OKWA FYA

### OKWA LI E NA ODU WOMUTIMA

Omuministeli wotete wa India, omushamane Lal Bahadur Shastri, okwa fya komutima. Okwa fya diva, a hangwa opo a shaina eembapila deudafano laye nepangelo la Pakistan.

Omushamane Shastri okwa li a ya koshipundi a landula omuministeli mukulu Nehru. Paife omukulukadi Indira Gandhi, oye a pewa oshipundi nokwa ninga hano omuministeli wotete wa India.

Omushamane Shastri okwa hangika a ile koshilando Tashkent muRussia oko a fila ombadilila. Odila yova-Rusia oyo ya twala omudimba waye ku New Dehli, oko a pakwa.

**M**Onguediva omu na etemba okakala kape komaulu oitenda taka shingifwa oimaliwa ile eengobe.

Ou te ka pumbwa na holoke pOnguediva pomushamane Paulus Munalje, oye e mu twale pokatamba.

Paulus Munalje.

## OTU NA TUU EMONATHANO KOMEHO

Kuku Paavo Nambundunga ota hokolola nakusa, omupangi Julia Shaanika, ngoka a mana ondjenda ye muuyuni eti 25/12/65, ngeyi:

Meme Julia a putudhilwa uupangi mOnandjokue nomo a longo lwo-tango. A tumwa ihe a ka longe moshipangelo sha Elim, moka a longo omimvo ne. Omumvo 1954 a langekwa mokapangelo mOnesi. Mpeyaka Omuwa a yambeke oshikaha she. A kala omuhungi gwomalutu noomwenyo. Okwa kwatha wo pohepele, sigo mOnesi mwa tungwa oshipangelo oshipe.

Komatango eti 24/12/65, nakusa a tumine ndje elaka, tu ka ninge eshakalo lyaavu moshipangelo. Pethimbo lyokuhita mo, aanona yaandjawa ya etele ndje elaka kutya, meme Julia a pya. O, iihuna shili! Twa kongo oshihauto shi mu fale koshipangelo ku Nakayale. Pokati kokuti oshihauto sha pi. Twa kongo shilwe kOmbalantu shi mu thikithe. Okrismesa okwe ke i lya nani megulu. He yoothigwa na toole po omusamane gwe Alarik noyana yaali.

Paavo Nambundunga.

## AMERIKA OLA KONDJIFA VIETNAM LOKOLUNDUME

Oilongo ya hangana oya ninga osho sha longekidilwe ku President Jonhson eshi a li a undafana novawiliki va Vietnam lokOlukadi muHanolulu.

Omatanga okuAmerika ova kondeka Vietnam lokOlundume nova homona nokuli. Opa nyonaunwa shihapu ngashi, eenhopa 450, eendjila di fike lunga 1,000 nomamushina olutenda mahapu a teyaulwa.

### 54 OVA FYA ESHI ODILA YA WA

MuBOGOTA mwa kundanwa kutya: Ovanhu 54 - mwa li ouhanana vatatu - ova fya eshi odila ya wa mo mombada, ovakonakoni osho va hokolola.

Omidimba douhanana oda monika moitekaukile yodila eshi ye li ndwangula ponhele Caribbean.

## ONDJILA YA WAPEKWA

Oshitauwa pokati kOniipa nOnandjokwe osha pombolwa komeva. Oihauto ya nyengwa okwenda nde ya dingilila kumwe ku lili. Epangelo leendjila ola endelega okuwapeka vali opo pa pomboka.

## ETSEYITHO

Omupolosi omuluudhe, David Jefta Amadhila, (No.148213), Ondangua, ota tseyitha uukambe u vule 5 wa toolwa nowa dhigininwa mokamba yaapolosi komweelo gwa Namutoni.

Shaa ngoka wa kanitha, inda u ki talele ko mwene kOnamutoni.

## OMUGUNDJUKA, INO MWENA MEGUMBO

Omugundjuka omuhogololwa gOmuwa, Omuwa nonena ote ku tegelele u longe oshilonga she. Okwa hala e ku longithe u ninge oshilongithwa she u mu longele manga u na ethimbo no manga u na oonkondo to vulu.

Megongalo lyandjeni oho yi tuu koshigongi shaagundjuka mu ka paluthwe nou ka tsuwe omukumo pamwe nooyakweni? Ngele iho yi ko, tameka numvo. Numvo owa pewa ethimbo okulongela Omuwa, tameka nena ndjika. Ino kwatakata. Omakundo geimbilo mEhangano 504: 2-3; 503.

J. J. S. Kangonga.

## BECHUANALAND TALI MONO ELIPANGELO

Seretse Khama, omuministeli wotete wa Bechuanaland, okwa ile ku London muEngland, opo a kundafane nepangelo linya omalongekido emanguluko nelipangelo la Bechuanaland, eshi kwa fanekwa li ka ninge orepublika muSeptemba neudo. Eenghundafana oda enda nawa neembapila deenhokolwa odo, oda shainwa mafiku aa muLondon.

### RHODESIA TALI MONO OMAHOOOL

Meenghundana moradio ya Suid Afrika, omwa popiwa kutya, Rhodesia ola teelega omahooli eengalona 1,400 a fike diva muBeira muMozambique, okudja muSuid—Afrika mu Stellenbosch.

Omushamane Ian Smith, oministeli yotete wa Rhodesia okwa popya kutya, ngenge omahooli aa a fika muRhodesia, otaa eta ekwafo linene nde tava findana nomolwoodi eli lomahooli.



*Olye omusama mefano ndika? Okambi-shi nenge okambwa? Tu pulathaneni wo mukukala nooyakwetu*

### ONKWATWA OMWAMERIKA A SILE MONDHOLOGO YA RUSLAND

Omulumbo ogwa zi miilongo ya hangana tagu ti: Eti-1 Febuluali, okwa ningwa oshituthi shefumviko lya Newcomb Mott, omusamane gwoomvula 27. Oye okwa sile moshikoto sheshina lyoonkwatwe mu Rusland. Aarusia ta ti: Okwi idhipaga mwene.

Oshiketha shomudhimba gwa Mott osha falwa kegongalo lyaandjawa mu V.S.A.

Mott okwa li a tokolelwa ondholongo yoomwedhi 18 eti - 24 Novemba 1965, oshoka okwa taakana oongamba dha Rusland okuza ku Norway pwaa nezimino lyawo.

Oohe na yina ya Mott kaa uvite ko efatululo lyAarusia, nkene omunona gwawo a si ngaaka.

### OMINA IPE MU TRANSVAAL

Koushilo wa Johannesburg, poshiano sheemala 80, opa monika vali onhele imwe i noshingoli shihapu.

Ovalongimina vahapu ova hovela oshilonga shokumina peenhele nhatu odo dipe nopa talwa kutya, oshingolodo shaa po otashi ka eta eeranda domamiliona atatu (R3 m.)moshikefa sha Republika.

### ONDHILA "BOEING" YI IPUMU MU MONT BLANC

Ondhila "Air India Boeing" oya tuka kombanda yoondundu dha Alpe mu Frankryk. Oyi itu mondungu ya Mont Blanc noya tekauka nai. Ekwa-tho lya helikopter sho lye ya, aakwathi mboka oya tseyitha mbala kutya, inamu hupa nando omufudho gumwe.

Aayendindhila oyo Dr. H J. Bhaka, omunashipundi sha "Indian Atomic Energy Commission", omumbelegia gumwe naayingilisa yane. Omwa adhi-

### DR. FISCH A PEWA OMEDALIA YA SIMANA

Esiku eti-6 lya Febuluali, Dr. Maria Fisch, omukatoli, okwa pewa omedalia ya simana. Omedalia ndjoka oya zi komupapa nokwe yi pewa molwiilongayakulo ye yomimvo 8 metumo lya Katoli mOkavango. Omumbisofi Koppmann oye e mu etele omedalia.

Dr. Fisch okwi ilonga mu Univer-siteit ya Munster na Göttingen mu Duitsland nokwe ya ku Afrika 1957 kondhalate yoomvula 10. "Iilalakanenwa yandje okuya ku Afrika eiutho, ehempululo lyuukriste nokulongela," osho a tumbula.

### FUTA ONGUNGA YOYE YA "CREDO"

Oshinyanyangidho shomu Durban, moka hamu nyanyangidhwa oshifo "CREDO" mOshiengilisa, otashi nyenyeta sho aaleshi ya Credo itaa futu oongunga dhawo notashi indile mboka ye nongunga ya tya ngaaka, ya fute.

### MU JOHANNESBURG YA NYANYUKWA

Omukuluntutumwa Arvo Eirola na M. Nghipandulua, sho ya li mu Johannesburg omasiku ngaka, oya ningi mpeyaka esiku lyomambo elongelolunga pamwe naamati aawambo, mboka ya za mu Angola. Aamati oya nyanyukilwa omapopitho. Oya adhika ya gongela iimaliwa ye yi tumine ando ongerki, ihe sho ya ningilwa okino yoshilonga shetumo shoka tashi longwa muka, oya tokola iimaliwa mbyoka yi tuminwe oshilonga shetumo. Kiimaliwa mbyoka oya gwedha ko ishewe noya ningi kumwe R7.84. Elongelokalunga oye li ningilwa eti 27/2/66.

kile wo aaindia 46 nuunona, uyali mboka inaa tumbulwa omuhoko gwawo.

Ondjenda yondhila ndjika okwa li tayi uka ku Geneva okuza ku New Delhi (India) na Beinet.

Oshikogo shosheentsi osha siikile oshimpoko shoka, onkee pwa holoka uudhigu wokwaamonako nawa. Iitandu nomidhimba odha li dha halakana uule woomaila odhindji kombanda yoondundu.

Aakonakoni otaa ti: Oshiponga shika oshe endululwa, sho pwa piti oomvula 16 nokuli.

Dr. Fisch okwa tala kutya, Okavango siku limwe oko ehala ndjoka lya gwilililwa po nayi komikithi, ngashi olwidhi, bilharzia uupuka nosho tuu dhilwe.

Omundokotoia nguka okwa kala moshimpwiyu shoshipangelo shaavu 100 nuupangelogona mboka ha talele po lumwe kehe omwedhi.

Okwa kala he ende oondjenda oonde noshihauto oye awike.

Oye a kala wo omutaleli omwaanawa moshitopolwa shoka nokwa kwatha wo aapolotestante.

Dr. Fisch okwa li ta longo moshipangelo sha Nyangani. Oye omundohotola omutitatu mOkavango. Nga-shingeyi oku li mu Vatikaan mu Rome, Italia.

## OLWEENDO LWETU KUUSHIMBA

Otwa thikama pOniipa meti-27 Des. 1965 lwopetata lyontiheyali yongula oku uka kUushimba nokutala nawa omaha gamwe ga simana. Osheendo osha li shi naantu 14. Omuhingi oye omukuluntu gwoshinyanyangidho, tate Katau.

Oshomeya inatu yi taleka tuu nawa, otwa nwetha owala omahooli nokuukilila mondjila.

Motjiwarongo otwe ya mo pomutenya. Otwa palutha omalutu getu nokudhima enota nomeya omatalala notwa fudha po kashona. Okuza nee mpoka omuhongo gu umbwa mombepo okaana, tu ukilile Okahandja. Mondjila okamvula ka shashamine nga kashona, ihe inake tu yonena ondjila. Otwa thiki mOkahandja etango inaali ya mo. Twa pewa omaha gokulala pegumbo lya tate Laukkanen. Shoka otwa li twa vulwa kashona, twa makele onguta yoomposi notwa ka lala.

Esiku eti-28, otwa tsikile nondjila yetu okuuka kOvenduka. Tate Laukkanen a kwata oluuli nokonima yotundi yimwe sho shOkakambe oshu uluka ko. Otwe shi zilile kolukanda. Taa, iikumitha tuu shili. Ino enda mo ino tala. Uuwindji shila ou thike poonyothi. Otwa zi po tu ukilila moshilando shoshene. Otwa yi mostrata ndjoka onene (Kaiser straat) notwa ulukilwa omutse gweshina ekulu. Twa tala wo oostora. Iihauto ku na mpo to lyata. Otwa galukile mbala kOkahandja tu ka tale oshikunino shiina-mwenyo.

Moshikunino sha Kahandja twa adha mo iinamwenyo yomaludhi gi ili nogi ili, yimwe yomu Afrika na yimwe yokombanda yomafuta. Twa kuminwa eshito lya Kalunga noondunge dhiilumbu. Twa mono iinamwenyo yimwe iipe momoho getu -ngashi emwanka nongwe onene ya zi mu Pakistan, ndjo hayi ndunduma ndele oto ti o Kafuta ka negaga. Otwa ulukilwa wo oongulu dho-skola ya Augustineum, ihe aantu inatu ya adha po.

Lwopontihamano mpeya yokomatango tse otatu manga. MOkahandja twa yakulwa nawa ku meme na tate Laukkanen no inatu hala oku ya dhiimbwa nando. Kalunga ne ya yambeke. Petata lyontiheyali yongulohi otwa kaile nawa nokukwata ondjila ya

Moonda. Omuhingi gwetumbela a nika ombepo yefuta mombepo ndele hene tuu a kwatele ositelinga mOkahandja, natu ka tya ngaa hee, omOmoonda. Mondjila twa pitilile ngaa Okaliveva nUsakos, mu twa nwetha omahooli ge tu thikithe kefuta. Etata lyomulongo na yimwe uusiku tse twa thikama nale pomunkulo gwalyo, li tu kunde tse tu li molole wo.

Eha lyotango twa tala olyo oshinyanyangidho mOmbaye. Otwa ulukilwa omashina gamwe po ngashi lyokuhogolola lyo otali teleke oondanda. Konyala ayihe mpeyaka oya faathana noyoshinyanyangidho shetu.

Otwa pula epitikilo okutala ofabrika yoohi. Otwa yi moTuna. Ofabrika oyi li po onene nohamu longwa kaantu oyendji nomu nomashina omakumithi. Omuhona gwofabrika e tu ulukile omaha agehe. Otwa ulukilwa nkene oohi tadhi longwa nonkene tadhi zi mefuta oku ka ninga onyama. Twa londo wo mokawato kamwe, ihe ngame moluumbanda onda ale ndi ihate po. Onda li ndi shi oohi ohadhi liwa owala kaantu, nani anuwa ohadhi ningwa wo uusila wokuliwa kuyuhwena. Otwa mono ooshako odhindji tadhi longekidhilwa okutumwa. Iilonga inatu yi tala nawa, oshoka oohi odha pata.

Sho twa zi mpoka twa yi komunkulo gwefuta oku ka tala ooskepa. Otwa adha ko ooskepa dhofraha na yimwe yokukwata oohi. Elago inali tu gwila, oshoka otwa li tu nehalo tu ye mo oku ke yi tala ihe inatu yi adha ko.

Pomutenya otwa shuna nondjila yetu sigo okOmoonda. Muka otwa uhala mo esiku lyuudha notwa vululukwa nawa. Moshilando twa tala omaha gamwe gamwe notwe ke enda komunkulo gwefuta oku ka tala nawa twi ilongelela.

Esiku lyOmumvo Omupe twa thikama mOmoonda etata lyomulongo notwe ya okulala kOniipa, twa thiki ko etata lyomulongo gwongulohi.

Mondjila twa pitilile omaha gamwe, ihe shoka otwa li tu neulumo otwa thikama owala mpoka oshihauto tashi nu omahooli.

Osho twa hulitha olweendo lwetu nenyanyu inatu mona nande oshiponga sha sha. Twa galuka nombili okutameka iilonga yomumvo nguka tu nenyanyu nevlulukoko.

Tangi,  
A. K. Ndevaetela.

## MOSTORA YOMAMBO MONIIPA OMU NA OMAMBO OMAPE OGE- NDJI LIMWE, OLYO:-



## EHOKOLOLO LYOMA- HEPEKO GA KRISTUS

Embo ndika "Ehokololo lyomahepeko ga Kristus", lya nyolwa komuhongi Elias J. Pentti, lyomapandja 58 mOshindonga, olya nyanyangidhwa mOniipa no tali landwa 20c.

Embo olya hokolola ehistori lyiinima tayi landula.

a) Omahepeko ga Kristus miilonga ye mu Jerusalem, manga ina kwatwa.

b) Omahepeko niilonga ye meya-na Getsemane.

c) Omahepeko ga Kristus niilonga ye montaneho yaakuluntu yaayuda.

d) Omahepeko niilonga ye montaneho ya Pilatus noya Herodes.

e) Omahepeko niilonga mu Golgata nokusa kwe.

f) Okufumvikwa kwa Kristus.

Mbestela mbala, u leshe mopaasa yonuumvo.

FINSE SENDINGDRUKKERY  
ONIIPA  
OVAMBOLAND