

OMUKWETU

No 3

FEBULUALI

1966

OKULONGELA OMUWA OKWO OKUTOYE

Eps. 56: 11-14.



Ekwatathano
nefano ndika
tala kep. 4-5

LWF.
PHOTO

Kalunga ta kwatha ndje okusimaneke oohapu dhe! Ongame ondi inekela Kalunga, ihe tila sha. Aantu otaa ningi ndje shike!

Kalunga, onde ku liloongunga dhomauvaneko, onda hala ndi ku

fute omahamblelondjimbo. Oshoka omwenyo gwandje we gu hupitha mokusa, nompadhi yandje mokupunduka, opo ndi ende koshipala sha Kalunga omuuyelee waanamwenyo.

Ihe Jesus a ti: Indeni ano ka ningeni aantu ayehe aalongwa yandje, oshoka, otango oohapu dhevangeli dhi nokuuvithilwa iigwana ayihe dhi ya ningile onzapo, opo ihe ehulilo tali ya.



Febuluali 1966

TU DHINDENI

Ongiini ano, tse otatu kondjitha uuwinayi u ze po, ihe ngoye owe u hala natango? Yakweni ya hala uuwanawa, manga ngoye wa hala uuwinayi? Yakweni ya hala uuwanawa; ngoye wa hala okukondja nokudhipaga? Yakweni ya hala iilonga, ndele ngoye ino hala iilonga oto endagula owala? Inima mbyoka tayi thigwapo ku yakweni, ngoye oyo to tidha? Aantu ngashingeyi ya hala okunwa ondjindja, ihe ongoye owa tindila moku nwotombo? Ngele ongoye omulumentu, owa fa to vullika oondunge nokaakiintu, ota ye ku lyatele pevi ngashingeyi. Aantu sho taa humu kome sho, ngoye oto shuna monima? Manga oshilongo tashi tungwa ku yakweni, ngoye oto shi tungulula? Aakwetu ne ya nankali, tu londoni tu uka pombanda, inatu londolokeni.

OONTOKOLWA DHEPANGELONGERKI LYETI

28 - 29/12/65

1

Epangelongerki lya taamba nepandulo enene iiyuma yUulalelo Uuyapuki, ya zi kegongalo lyoku Kemi mu Suomi moka omusamane V. Simojoki, omukuluntu gwEnongelo lyaayakuligongalo, a longo oomvula odhindji. Nando egongalo lyoku Kemi lya kala moothina, aakomunisme sho ya indjipala moshilando omolwiilonga yoofaburika, Kalunga okwe ya pe ompito yokuholola ohole ye pamukalo nguka gwokugandja iilongitho yeyakulo lyomasakramenti omayapuki.

2

Omusitagongalo Elia Haipinge a tumwa a ka yakule ondjakulwambinga yomu Walvisbaai oomwedhi ndatu (Januali sigo Maart, 1966), a kale ko sigo omusitagongalo Metusalem Shilongo ta yi ko.

3

Epangelongerki otali popile osikola yaamati ya koka, yaa teke po, yi kale ngaa kEenhana. Aanaskola ya kale taa futu R 16.00 komumvo, ano R 4 koshikako, opo iimaliwa mbika yi longithwe mokulanda iikulya yawo.

4

Epangelongerki lya utha osikola yaamati ya koka, yi kale noshiketha shawo, shi kwathe mokusiikila oompumbwe dhosikola. Nepandulo enene kuku H. Haapanen okwa gandja moshiketha shika omwaalu gwekota, R100, yi kale ombuto yotango moshiketha shika. Epangelongerki otali ka tala wo ngele ope nompito okugwedhela ombuto ndjika.

VANYASHA VAKWETU

Ovanyasha mehalalakano. onda hala oku mu dimbulukifa oshinima shimwe. Vahapu otu na ongunga yongalo yomoshikefa shetu shovanyasha mOwambo. Ongalo yoshikefa shovanyasha mOwambo itai filwa ashike oshisho kovanyasha ovo ve li mOwambo ahowe. Tu ifileni oshisho atusheni na ava tu li mehalakano. Ookaume, inatu efeni oshikefa shetu shi ninge okahetengi, opo shi yakule mepya lomwene. Heno, ope na ovanyasha vamwe mehalakano mwa kendabala shili okutuminā oshikefa shetu ekwafo, onawa uunene.

Tu dimbulukweni nawa kutya, oudwali ofye otwa indileni, tu pewe omutumwa a kale ta longo oshilongatumo ponhele yetu, ye a kale ta futwa moshikefa shetu. Otwe mu pewa nokuli pehulilo lomudo 1964. Oye omwevangeliste Edward Nghimuena, ngashi vahapu mwe mu lesa mOmukwetu. Oye otwe mu tuma moushilo mu Kongo movapaani. Eindilo letu netokolo letu na li kale la shili inali filaondjilakati.

Pwilikaneni nawa ndi mu lombwele. Fye vakweni ovanyasha vomodolopa mu Windhoek, otwa kundafana mu Malitsa 13. 1965, tu ninge ongalo yoshikefa shetu. Otwa udafana ikale hai umbwa alushe momwedi luvali mohungi yetu yongudumbibeli.

Otwa udafana ne ngaha kutya, ongalo yetu ei nge ya ningi omwenyo, ohatu dulu okukufa mo nokutumina koshikefa shetu shovanyasha kOwambo. Onghe ohatu mu pula onye ovanyasha vakwetu amushe mehalakano: Omwa kundafana ne ngahelipi mOdolopa yeni nomokomboni yeni, nomolukanda leni, nopofalama yeni? Tu kundafaneni nawa, tu ningeni ehanganano limwe alike keembinga neembinga. Hano aishe tu i ningeni memanguluko hapamhango. Omwene Kalunga ota ti: Eteni oshitimulongo shawana moshituvikilwa mongulu yanage, opo mu kale mu na ondjabi ya wana, nohandi mu pe eyambeko louyamba wange la wana.

Abraham J. Haileka



Omushigakano gwa Jesus ogwo aguke ti!

IMBILENI OMUWA ONDJIMBO OMPE

OONKUNDANA DHOKETILYASA:-

Imbileni Omuwa omavi agehe. Imbileni Omuwa, simanekeni edhina lye. Ps. 96: 1-2a.

Oku na oshinima shimwe hatu shi dimbwa po, nando hatu shi ningi, ndele inatu shi simaneka unene, osho olwimbo. Olwimbo olwa tulwa po okwimbila Tate Kalunga, Ps. 98: 4-6. Imbileni Omuwa pombanda one iilongo ayihe, nyanyukweni, ligoleni nokwimba ehambelelo. Imbeni ehambelelo lyOmuwa nokuhik' uuhumba, nokwimba omasimanekondjimbo nomankuma noshihomo shoontunda. Nyanyukilweni pombanda koshipala shOmuwa.

Aaisrael sho ya piithwa mo mefuta, ya imbi ya ti: "Imbileni Omuwa omwimbo, oshoka oye a simanekeka. Nuukambe noonakulond'uukambe kwe ya undulile mefuta, 2Moses. 15:1-21.

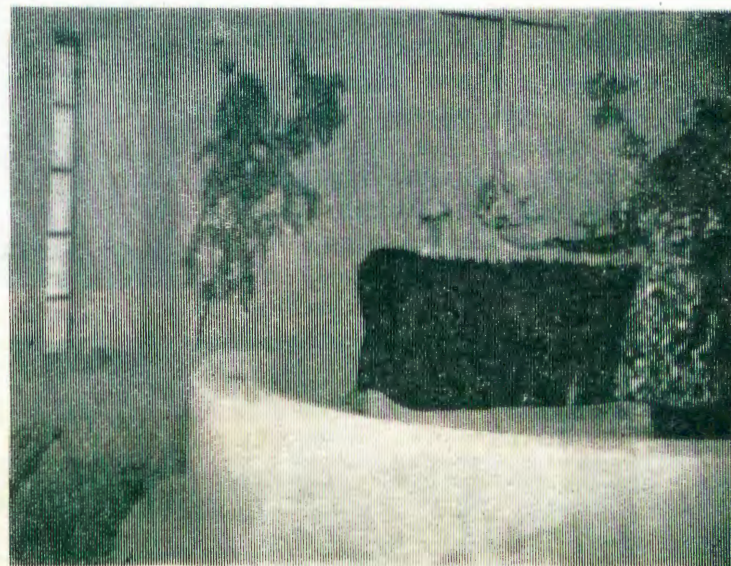
Onke aakwetu aaholike, natu imbileni Tate Kalunga omaimbilo gehambebelelo nomomumvo omupe.

Kornelia Kuume.

Uulonga wo wa simana, ohole nge ye u longitha. Shaa ngame nde u gwanitha, ondjambi ngame ndi yi na. Eimbilo 505:4.



Mefano tamu mono ongundu yolwimbo yokEtilyasa tayi imbi mOkrisimesa. Omwimbi-thi Kornelia Kuume a thikama komeho ta wilike mongerki.



Mpaka tatu mono mefano ndika meme Taimi Kuume e li moshiyambelo ta zaleke momumvo omupe.

IYALOO OPO TU LI NATANGO

Eti 1/1/1966 otwa li tu na oshivilo shinene mongreki yetu mu Tsumeb. Ovataleli meongalo eli aveshe va li va pewa omhito okuminika eongalo nokuhambelela Kalunga. Ovataleli ove tu u-difila aveshe melandulafano. Kutya: "Tu alula Jehova, shitukifa omafiku etu a fe otete nomodula ei."

Opa li yo etanga lovakulukadi ovo voshongalele sheilikano. Ova li ve tu hokololela omahokololo mawa taa kumaida kutya, tu na okulunduluka, tu kale vape modula ei ipe. Osho va ingida: "Omwene tu lundulula tu fe omilonga dokulombo." Ova imba yo omaimbilo mawa e tu hekeleka shili. Kalunga na hambelelwe nde ne tu pe omutima wonhumba momudo ou.

Malakia Hauuanga.

KOVANYASHA VONGERKI YO- WAMBOKAVANGO

Ovanyasha vakwetu, mu Jesus Kristus, ohatu mu nyolele onhumwafu ei, opo tu mu talele po nayo. Tete ohatu mu kundu neendjovo da Kalunga di li mEpt. 119:9.

Eendjovo edi tadi tu wilike fye atusheni. Tu kondjeleni ounyasha wetu. Efimbo eli tu li mulo paife, ohatu mo nokudidilika oinima ipeelela, ndelene mefimbo tuu eli omo yo ovanyasha hatu ehene komesho, unene mokudina eendjovo da Kalunga noipango yaye.

Taleni, ookaume ovaholike, Jesus Omwene wetu, oye oshihopaelelwa shetu. Oye okwa dulika kehalo

la Kalunga. Na fye yo natu wanife ehalo la Tate Kalunga mounyasha wetu. Ngenge ihatu shi ningi, nena ohatu kondjele ngahelipi ongerki yetu noshiwana shetu? Opo tu ehenifeni oshiwana shetu moukoshoki wokomwenyo nometilokalunga, natu kaleni ovakoshoki. Ohatu fimanekifanghahelipi ovakulunhu vetu moku tu tekula? Ohatu ningeni shike hano? Natu dulikeni hano, osheshi Ombibeli otai ti: Ou ta dini ovakulunhu vaye, oye ota dini yo Kalunga. Tu lungameni hano tu ha kale ovadinikalunga. Ovanyasha otava pulwa va longe oilonga ihapu, shimwe shomuyo osho eyakulo. Natu taleni oshihopaelelwa komusamaria omunamutimanghenda, Luk.10:33-35.

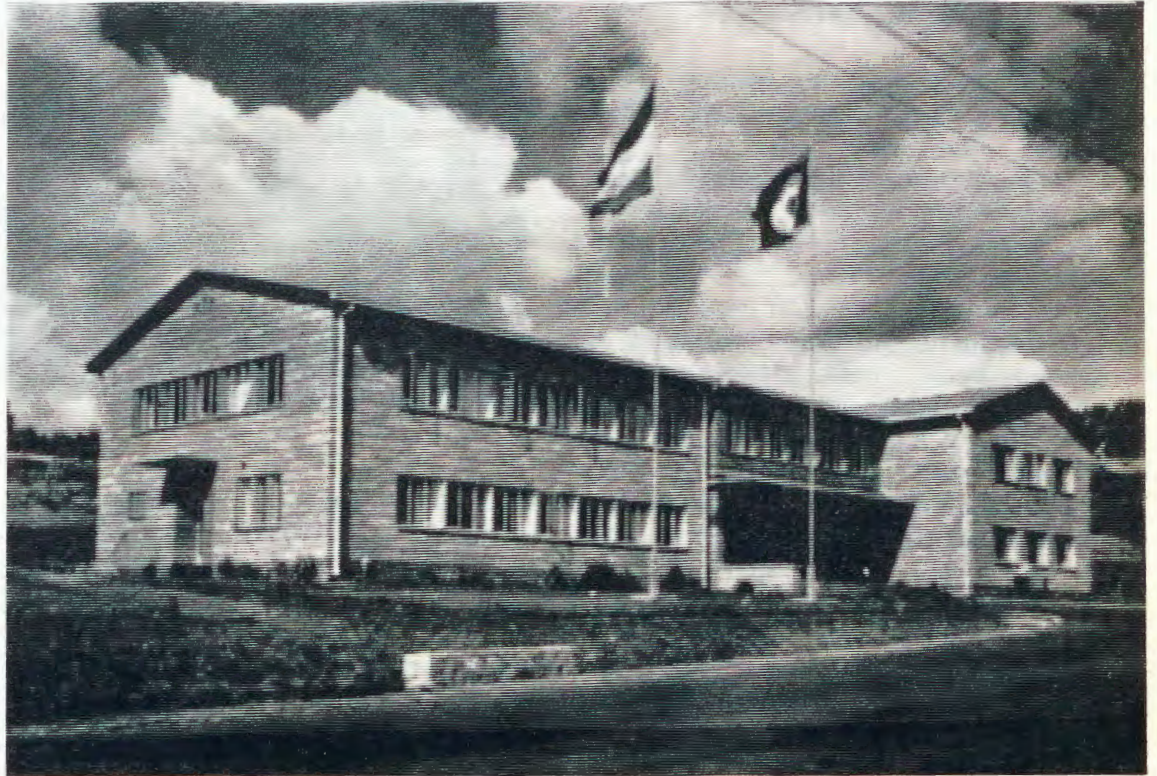
Ovadiakonissalongwa mEngela.

ORADIO YOKUTUMA

Aatumwa yongerki yetu sho ya li mu Ethiopia, oya talele po egumbo lyOradio yokutuma oohapu dhEvangeli. Oye tu etele onkundana ombwanawa noyo tayi landula mpaka:-

Oshashiona yoradio ndjika oya simana muuyuuni ngashi ngeyi, unene mu Afrika. Oshashiyona ndjika oya kolekwa koshigongi shaakwaLutheri, sha gongala mu Helsinki omumvo tuu ngoka. Oshashiona ndjika oyo yimwe onene muuyuni.

Elalakaneno lyayo: Okutseyithila aapagani Kristus Omuwa nohapu ye kaantu yopethimbo ndika. Okukwatha meputudho lyiilongo nomoonkambadhala dhayo. Okukoleka oshilonga shuuyevangeliste nehumokomeho lya-sho moongamba dhayo. Omanenedhiladhilo gayo ogo naanaa ngaka: 1) Okuuvitha Evangeli lya Kristus ngashi lya holoka momanyolo kutya, oyo lyokuhupitha. 2) Okukoleka aakriste moongerki ya dhame eitaalo. 3) Okuhumitha komeho elongo. 4) Okukwatha oongerki miilonga yadho. 5) Okuputudha aalongi mehanganano ndika.



Egumbo lyoradio yoohapu dheEvangeli mu Addis Abeba. Epanдела lya gama kolulyo olyoradio ndjika, na lyokolumoho olyepangelo lya Ethiopia.



Evangeli hali tumwa noradio okudja mu Afrika la yuka mu Afrika, moushilo na Asia. Dr. Sigurd Aske e li mefano eli, oye omuwilikimukulunhu woradio oyo.

Ehistori lyayo: Gumwe, Dr. Fridtjov Birkeli, komeho a ka ninga omuwiliki gwEtumo lyongongahangano muuyuni, okwa faneke oshilonga shoradio ndjika, nkene shi nokutotwa miilando. Okwa kundathana naawiliki yaakwaLutheri momimvo 1956-1957. Oshigongi shetumo muuyuni sha gongala 1957, osha utha iilyo yimwe yoshilonga shika, yi longe mu Afrika na Asia. Moshigongi ishewe shimwe sha gongala 1958 moshilando Sigtuna, mu Sweden, mwa tokolwa ostasi ndjika yi tungwe mu Afrika.

Ethiopia oli igandja pethimbo, omo mu tungilwe ostasi ndjika. Oyo ya kala nalenale oshigwana shaakriste sha manguluka. litungitha no ya longekidhwa. Ongongahangano yaa-kwaLutheri oya zimine, Ethiopia li ninge eha lystasi ndjika neindilo lya falwa kepangelo lya Ethiopia. Eindilo olya taambwa. Egumbo lyoradio ndjika olya egululilwa iilonga yalyo eti 26/2/1963 komusimanekwa Haile Selassie I, omukesari gwa Ethiopia.

OOHAPU DHEVANGELI



LWF. PHOTOS

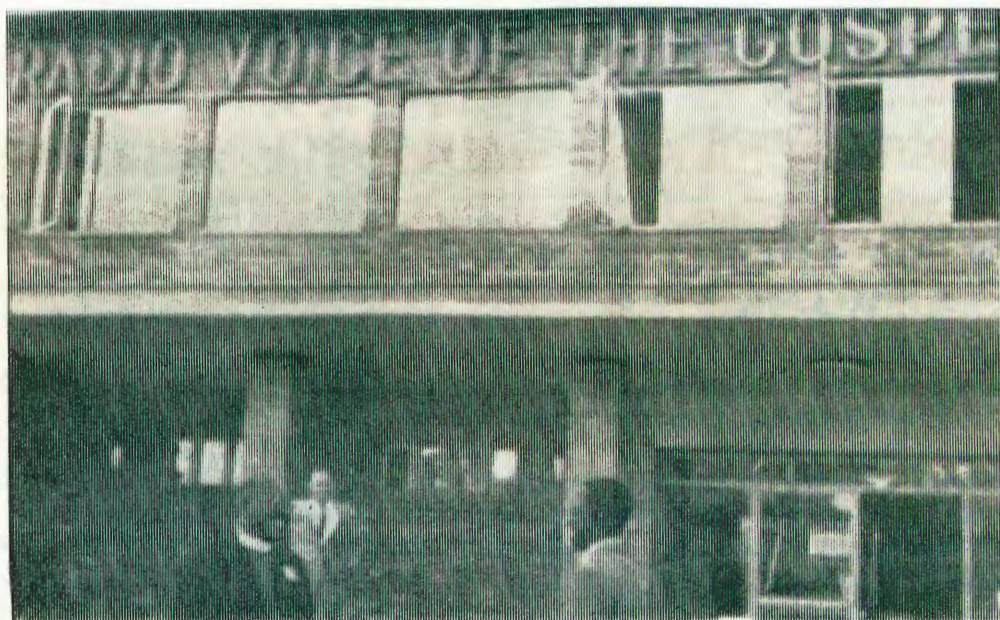
Mefano ndika tamu monika eshina, ano oradio ndjoka naanashilonga mboka taye li longitha, ye nuunkulungu owindji.

Omakwatho: Ostasi ndjika ohayi kwathwa kiimaliwa tayi zi mcongerki koombinga muuyuni. Aalongi yamo oya adha po 160. Aaniilonga yamwe ya za miilongo 27, ngashi England, Ethiopia, France, Germany, Holland, Jordan, Norway, Sweden, Tanzania, na Amerika. Osho oradio ndjika tayi thikithile evangeli maantu oyendji no ya dhenga shili pombanda.

Mwene gwayo: Oradio ndjika oya totwa kOngongahangano yaakwa-Lutheri noya wo. Oombelewa dhepangelo lyayo odhi li mu Geneva mu Switzerland, ndhoka dhi lile po oongerki 59 naakriste oomiliona 50.



Amushanga gumwe, Menkir Esayas, ta ulukile aanona yoskola oshilonga shoradio.



Omubisofi Leonard Auala sho ya li mu Ethiopia, oya talele po egumbo lyoradio. Pevi mefano ndika omubisofi Auala nomusitagongalo Natanael Sirongo, oya thikama pongulu ndjoka, ya talathana nokunyanyukwa.

OKUUDIFA EVANGELI NEUDO

Modula ei 1966, oradio yeendaka devangeli: otai tumu meetundi 161/2 mefiku, momalaka 19 mu Afrika, Asia na Near East. Eeprograma tadi di moitukulwa 14, omo mu na eesha-

shiona—Tadi transmetwa ku 100 kilowatt shortwave eetransmetta, na mo medium wave Transmitta imwe-nelalakano OKUHEPAULULA KRISTUS MOUNYUNI. Oandelea oyo ei: ETLF, Box 654, Addis Abeba, Ethiopia.

OMWALU GWAAKRISTE MUUYUNI OGWO OOMILIONA 877

Omwalu ngoka ogwo % 29, 23 momwalu gwaantu ayehe yomuuyuni. Aantu ye li muuyuni auhe oomiliardi 3. Aakriste mbaka oom. 877 oya topoka ngeyi:

Akatolika	omiliona	500
Aakwaevangeli	"	256
Aaortodoksi (Aakwagreka)	"	97
Aakriste oyakwawo yi ili noyi li	"	24

Omayalulo taga ulukile ishewe kutya muuyuni omu na natango:

Aayuda	oomiliona	13
Aamuhamedi	"	437
Aahindu	"	370
Aabudda	"	190
Aatao	"	30

Aantu mboka ye neitaalo lyoombepo dhi ili nodhi li

Aantu mboka yomaitaalo gi ili nogi ili

ORADIO YOKUTUMA OOHAPU DHEVANGELI (Radio voice of the Gospel)

Eenghundana da dja mu Geneva tadi ti: Mu Januari 18-19/66, opwa diladilwa pa ningwe oshiongalele she-tumo leendaka devangeli mu St. Louis, mu Missouri. Oshiongalele osha shivwa ku dr. Siquard* Aske (general director) omukuluntu wongo-

ngahangano yovaLuther yokutuma eendaka devangeli mounyuni. Ongongahango ei oi na paife oshisho shokutota eeshashiyona dipe dokutambula nokutuma vali eendaka devangeli paveta. Unene mu Japan, Hong Kong nomu Taiwan mwa diladililwa eeshashiyona da tya ngaha. Mu November 15, 1965, omuhongi Paul M. Volz okwa hoololwa a ninge omuponhele, muwiliki woradio yevangeli.

OPE NA EPUKO MOI- WANA

Ope na epuko moiwana, osheshi itai longo ngashi i nokulonga, osho yo omunhu nomunhu. Osheshi oiwana oyo ya hepa omhepo ipe.

Ohatu dulu yo unene okutya, elongo olo va longwa olokombinga ashike. Elongo itali lundulula omhepo yomunhu. Tu nokutya, oiwana otai vele oudu womhepo yokulihola noyoufukenu. Ouwa oo omunhu e li muwo, ine u halela mukwao. Eendjovo da Mbibeli ote di popi ashike mokanya, osheshi oiwana otai wili-kwa kovanongonhu ve shii aishe, ha ku ovo inava longwa. Ove shii oshili.

Ope na mbela omhito yasha okulundulula oufukenu ou woiwana? Eheni, opo i li. Ombibeli otai ti: Ngenge umwe ta kongo Kalunga, Kalunga okwe mu udanekela: Ohandi va pe OMHEPO IPE aveshe ovo ta-va kongo nge. Ombibeli tai ti: Jesus

okwe uya kedu koiwana, e i kwafe i mone OMHEPO IPE.

Ovanhu otava dulu okulunduluka nokupewa omhepo ipe, nge tave i kongo ku Kalunga.

Ombili yoiwana nge tai hale okulieta po yovene pokati koiwana ile pokati komunhu nomunhu, nena taku holoka oita nomadipaafano neenhanana dinene, ongeembwa tadi lidengele ombelela. Osho tashi lidengelwa, ombili tuu. Ndele Kalunga ta dulu osho sha puka e shi tule mondjila. Osho a hala yo a ninge oiwana. Kalunga a hala okulundulula shinya shi kale ngaha, ndele tala nee oufukulume ta! Kalunga a hala okukwafa oiwana i mone omhepo ipe yohole, omhepo yombili, omhepo yeendunge, omhepo yefindano nomhepo onghwaulu. Owe i tambula tuu? Opo pe na onyango momunhu ile moshiwana ile momutekuli keshe, opo omhepo yombili otai fudikwa medu. Ito i tambula ku Kalunga oshali? I konga hano!

ESHASHO MUU- TSATHIMA

Eti 21/11/65 mUutsathima, aalongwa 15 oya shashwa. Aagundjuka 11 naakulukadhi aakulupe 4.

Aantu ye thike 120 oya gongala moshituthi. Osha ningilwa pondje, sho mongulu inaa gwana mo. Aalongwa ya konakonwa ku J. Amakutuwa. Aatsathima mbaka oya tseye nawa shoka ye shi pulwa. Opa li enyanyu.

Otwa pulakene omauvitho. Mugo lya Amakutuwa lya ti: "Kotokeni shili, omadhina geni gaa dhimwe mo moramata yomwenyo" nokwe ya kumagidha, ya dhame eitaalo. Tu ya galikaneneni, ya mwenyekwe ku Kristus. Ev. Tomas Shiguedha.

OILONGA YOMONASALESA

Moshipangelo shinene mOnandjokwe, ohamu konakonwa omaudu e lili noku lili. Ngashi moilonga yomolaboratorium mOnandjokwe ohamu longo tate Lineekela Hauala.

"Ohatu konakona oupuka vanene kanini na vamwe vanininilela. Ovo ito va mono nomesho okomutwe, kakele neshina ledina "Mikroskoop." Tate Hauala okwa tya vali: "Oupuka ovo eembuto domaudu, odo hadi pendula omaudu momalutu etweni. Hano moshipangelo eshi ohatu konakona oupuka momate, moushoshu, mohonde, momashita nosho tuu omunhu. Onawa ngenge ovanhu tave uya va konakonwe moshipangelo."

Omushamane Lineekela (33), okwa longa paife eedula 6 moilonga yolaboratorium. Okwa longwa oilonga ei mu Angola metumo lako lova Amerika (American Mission Board).



Lineekela Hauala ta konakona omaudu peshina Mikroskoop. Oku li paife ku Windhoek te lihongo nawa oilonga yolaboratori.

OUNYUNI OTAU TONGO SHIKE

OMAMBEPO OMADHIGU OGA DHIPAGA AANTU 350

Oonkundana dhomu RIO DE JANEIRO, shomu Rusia, odhi li ngeyi: Oombepo oondhigu odha vundagula oshilando Brazil omasiku ga zi ko naantu 350 oya si nooyakwawo omayovi ogendji oya thigwa powala, omagumbo sho ga teyagulwa po thilu.

Moshilando ishewe shimwe Guanabara, oshilando shepangelo mu Rio de Janeiro, aantu 198 oya sa naantu 20,000 oya thigwa powala omagumbo ga teka po.

MU NIGERIA MWA NIKA UNENE

OMADHIPAGATHANO

Mu KINGSTON mwa kundana kutya: Omuministeli gumwe gomu Jamaica, omusamane Donald Sangster, okwa ti kutya, okwa mona aadhipagi nomadhipagathano, sho a yile koshigongi shaaministeli. Unene omahindathano ge li kuuninginino wa Nigeria.

"Inandi panda nando iiponga mbiyaka," osho a lombwela aalopoti. "Nokuli manga inatu adha ko, pa tseyithwa oomwenyo odhindji dha kana," osho a hokolola. Omusamane Sangster okwa popya wo kutya, okwa uvu yamwe ya fika omuntu nomwenyo.

OMUKULUKADHI A KANA

Onkundana ya zi kOnyaanya, ya hokolola: Omukulukadhi a kana edhina lye Nandjigwa ya Pongo, omumwayina gwa Titus Pongo a li mOnyaanya. Omutseyithi oye Fiina ya Ithindi, Onyaanya, Ondonga. Fiina okwa ti, kaa shi wo mpoka a kala.

Aniwa oya za mOndonga taa yi kiilongo yokUuninginino. Ano ngoka wa tseyana nando oyana, tumina Fiina kOnyaanya elaka.

Eshiiwifo

Ngenge to tumu efano loye kOmukwetu, ile to pula sha wa hala u nyamukulwe, tuma yo ekutu li nostombe ngenge ou li mOushimba.

VAVALI OVA FYA OMEVA MOMULONGA

Ovatilyane vavali, omukainhu nomulumentu ova fya, omeva momulonga wOkavango.

Okawato ka hokwa mefina lomuti, oka li taka endifwa komulaule. Ova yaukila nawa kombinga inya. Mokwaaluka okawato oka kandoma na aveshe va li mo oupyakadi ashike momeva. Omushingi wokawato pamwe na vakwao vamwe, ova kondja nokuyowa nde va fika nomwenyo komunghulo. Ojilumbu ivali oyo aike ya nyengwa okuyowa nde ova fya.

EEMBWAPOLIFI OTADI LONGO NAWA

Eembwa mbali, odo hadi longifwa ngashi ovapolifi, odo de uya paife mu Suidwes, oda longwa nawa vati. Mopeleka ya Nina, ovalunga va li va vaka ova kwatwa kudo. Movenduka eembwa odo oda kwata mo ovalunga vatano, va li va teya omaumbo.

Eembwa edi, Emmel na Dienie, ode uya mOvenduka pamwe nomupolifi J. Engelbrecht woku Bloemfontein.



Oshiyamakuti(takbok)otashi tala nokutongolola. Tu tongololeni wo!

Ovafimanekwa,

Ou u nolufu loshinyolwa shomOmukwetu, shi tuma divadiva, osheshi ngenge owa tokelwa, nena owe tu tokelifa yo.

OSHIPONGA SHOMBADILILA

Omwene okwe tu hololela oinyengandunge eti-13/8/1965. Omumati mukwetu Salomo Ismael (Uanangula), a hulifa ombadilila.

Petata lomulongo woufiku otwa hangwa hatu tape omalodu motenga yombaa. Okavela aka ka li taka teke mo oka wila mo. Nakupinda okwe ke ka tala mo. Omolwomuku ile edimba lomalodu lidjuu, a wila mo.

Onghuwo eshi ya kuwa, Salomo Ismael, Ohaingu, Engela, oye e uya po tete, opo a hupife ngeno Fransku Shivinga, oshimbudu. Ovamati aveshe ava vavali va wila motenga.

Ovalumenhu va kala mo konyala eetundi mbali netata. Otwa ingida nokangobe koilonga. Ovanandunge ova endelela diva, osho yo ndoktola. Konima yeetundi odo, Fransku a kufwa mo. A vendwa diva, a ya koshipangelo. Ashike okwa ya ko a fya, ndele konima yokafimbo omwenyo we ke u ya mo.

Konima yokafimbo Salomo a kufwa mo yo. Omundokotola okwe mu venda, ndele otwa hangwa a iwa komalodu medimo. A ya yo koshipangelo. Oufiku pombali Salomo a hulifa yo. Eshi she tu dimbulufa, nhu-mbi okudjapo kwetu kaku na ou e ku shi.

Ino danena onghoshi, otai ku li.
Ino danena yo omundilo, oto pi.

OLYE OMUMWAYI- NA GWA NAKUSA?

Kalkveld- Onkundana ya zi ku Kalkfeld otayi ti: Nembija lya Nuunyuni, omuna gwa Nambata lya Amukoto, yina mukwanyoka, Omukunda Onihua, okwa si. Iinima ye oko yi li tai tege aakwawo. omukwawo ne ye ku ngame ku A. Kahima Haimbodi, Box 89, Kalkveld.

ETSEYITHO

Aantu ngele ya hala okumbestela oshifo "Mbudi" shomOshikavango, otaa futu 10c, komumvo, oonomora 6, otaye shi pula kOkavango:

Oadressi, Miss. T. Jantunen,
Rupara,
P. O. Runtu.

ALESHI TAA NYOLA

OTAMU TI NGIINI?

"Otamu ti ngiini ano ngele mwa tala uuyuni mbuka? Ngele to tala e to pulakene iiningwanima ngashingeyi, oto ti ngiini? Ayihe yongashingeyi oya popiwa mOmbibeli."

"Tala omukwetu, uuyuni owa thika pehulilo. Tu tegeni shili ngoka gwopombandambanda. Ngoka u li natango muunkolwi, za mo. Ngoka ho longo osondaha, pata iilonga yoye u ye kongerki. Omuwa oku li posheelo. Inatu kotheleni muuyuni mbuka, opo kwaa ka tiwe: Oshili, oshili, kandi ku shi."

Ekundo ndika olya gandjwa ku T.P.Ekongo, gwegongalo lyOshigambo, ta longo ku Windhoek.



P. Ekongo a thanekelwa pofalama Skietwerf, pomuti gwoposheelo shonkombitha moka ha longo.

Cornelius Johannes, Eheke, ota kundu aaleshi yOmukwetu ngeyi: Aamwameme, inamu sa uunye okutsikila okulesha Omukwetu. Ope niifo oyindji muuyuni itaa yi popi oohapu dhomapukululo, mOmukwetu otu na mo omapukululo, omakumagidho, elago, nomayelithilo tage tu kwatha shili mokukala kwetu. A kunditha wo noohapu dha Eps. 95:1-11.

Lukas Jafet, Box 28, Okahandja, okwa nyola ngeyi: Aakriste aakwetu, tu igandjeni komupangeli gwetu Jesus Kristus. Oye ta pangele omadhiladhilo, omalaka nela lyetu, opo twaa tule mo uuzigo hau dhipaga. Oye a sindi wo uulunde wetu, oshoka okwa pewa epangelo alihe lyomegulu nokombanda yeve.

Abraham Sheyavali, Oranjemund, ota ti ngeyi: Kondja ekondjo ewanawa lyeitaalo, dhama omwenyo gwaaluhe, we gu ithanewa nowe gu iziminine nehempululo ewanawa montaneho yonzapo oyendji koshipala sha Kalunga; nguka ha tula iinima ayihe omwenyo nosha Jesus, nguka a hempulula ehempululo ewanawa koshipala sha Pilatus.

Dhiginineni oshipango shOmuwa sigo eholoko lya Jesus Kristus.

Immanuel Hamunjela, Cape Town, ota hokolola oshiponga. Eshina lolutenda la li novanhu vahapuhapu neefraha di lili nodi lili, la kandoma. Eshina la enda kolutenda lipe inali longifwa nale, ndelene nani olutenda la li inali kola nawa. Eshina la wa ko alishe neemwenyo dihapu da kanena opo. Osho pa dja vahapuhapu va lemanekwa nai nohonde ya kunguluka ponhele oyo. Immanuel ta ti: Tu lungameni mokukala kwetu, osheshi efyo otali tu vakele.

A. A. Nabot, Otavi: ota ti: Okwa nyolwa: Ngele tamu shekelwa edhina lya Kristus, one aanelago, oshoka Ombepo yeadhimo otayi mu lambele.

Pwaa kale nando gumwe mokati keni ta hepekwa, molwasho oye omudhipagi, omufuthi. omukolokoshi nenge ngoka ta gwayele moohapu dhaantu. Ihe ngele ta hepekwa shoka oye omukriste, ina sohoni, na simaneke Kalunga molwedhina lye.

Gehas Ekanjo, Wálvis Bay, ota ti: Uuyuni ou na oonkundathana odhindji dhiita nomalugodhi otwe ga tega. Tu galikaneni Kalunga a kandule po iiponga yiita noku ete ombili yiigwana.

HEMPULULA OMUWA PAANTU

Tu hempululeni Omuwa gwetu Jesus Kristus pooyakwetu no shaa mpoka tu li. Apehe mpoka tatu ende, tu hempululeni aantu edhina lye, twaa se ohoni, oye wo etu hempulule pu Tate megulu (Mat. 10: 32).

Oye te ya (Ehol. 22:12). Tu dhiginineni ehempululo lyetegameno lyetu twaa nomatenguko, oshoka omuuvane ki oye omudhiginini. Twaa iteke po Omukulili negongalo lyetu yene, nu-nene sho tatu mono esiku tali hedha ko (Heb. 10:25).

TU LANDITHENI NAWA

Okulonga paushili naku tu kwa-tele komeho miilonga yetu.

Aalandithi oyendji otu na epuko



Filemon Moongo

Naeman P. Nghishekwa, Otavi, ota pandula ohungi yOmbibeli ye yi ningilwa komusamane E. Angula mokulesha 1Kor. 1: 24-25. Omusamane P. Laukkanen a li mo wo. Ehuku lyohungi olyo: Ileni kombizi yOmuwa gwetu Jesus Kristus, opo ondjo dheni dhi dhimwe po.

N. J. Jason, Luderitz: Olye kwo opala okutsakaneka okrimesa? Ongame nenge ongoye? Awe, oye tu ngoka e na iikaha inayi nika uulunde, nomwenyo gwe gwa yela.

ONDAKA YOKOMWENYO

Omunamwenyo kombada yedu ngenge ku na nande osho hashi ku konghola ongelihololo, oove ou li kokele natango.

Ngenge to diladila oshinima shii, ngeno u shi longe, oha pa kala ekondjifafano nokaana koye komomwenyo taka ti: Ino shi ninga!

Ndele ove eshi uhe shii kutya otashi ti shike, oto hetekele oku ka hanyena kutya, ndi na oku shi longe. Eli eihololo limwe lomuo.

Tala vali, alushe ngenge ngaa u na omupya moilonga yoye oyo inai yuka, ngee yomeholeko, ngee yopoluhaela, (haku ti ngaa u longe eshi wa monika.)

Nena oto ti a shike: Omumenhu ndi na omupya ee! Tala, ku na omupya nande, ndele osho eihololo kutya, ove omunhu wOmwenye, onghee ino pitikwa okulonga oyo inai yuka koshipala shaye.

Omushiti woye ta ti: Ame Omwene Kalunga koye, ino kala nooKalunga vamwe pamwe na ame!

Sem Shilumba.

mokulanditha, omolwokulundulula ondando yoshinima. Ngele wa mono kutya, nima na nima, okwe eleka e na sha noku na omake, noha longo miilonga yaalye, nena oto lundulula ondando. Ondando yi na okukala yimwe kohepele, komuyamba nokomutiligane wo.

Oshinima shika otashi ningwa olwindji maanangeshefa oyendji omolwiimaliwa, nelyalyakano tali ya nei-nekelo tali kana, e taku tiwa oshili kayi mo mu tse.

Tu kambadhaleni tu longe paushili, opo tu mone elago miilonga yetu.

FINSE SENDINGDRUKKERY
ONIIPA
OVAMBOLAND