

# OMUKWETU

No 1

JANUALI

1966

## EKWATHO OHALI ZI KOMUWA!

Eps. 121



Ongame otandi ligameke omeho gandje koondundu. Ekwatho lyandje otali zi peni? Ekwatho lyandje otali zi kOmuwa, okOmushiti gwegulu nevi.

Oompadhi dhoye ite dhi etha dhi thenuke po, tala omusita ngu gwIsrael oye iha lala, ye iha kotha. Omuwa oye omugameni gwoye, Omuwa oye omuzile gwoye okolulyo loye. Etango itali ku tsu omutenya nomwedhi itagu ku tsu uusiku.

Omuwa ote ku gamene kuuwina-yi kehe nomwenyo gwoye te gu gamene. Omuwa ota gamene okupita kwoye nokuya mo kwoye, onena na aluheluhe!



Januali 1966

## EPUKULULO

Ovakwetu amushe ovo tamu uya omu, inamu etelela vali epangwe, osheshi olo oshiponga. Unene tu onye ovo hamu uya okupashiyona ohandi mu kumaida, inamu humbata vali epangwe. Oveta paife oya dimbulukwa oshinima eshi kutya, ovawambo otava yadifa epangwe mOushimba noya handuka unene. Onghe oi li po tai hadahada momaumbo omo mu na ovapashiyoni.

Omukwetu, ondi udite shili kutya, owa hala okushimokola, ndele dimbulukwa nge wa kwatwa, oto futu oimaliwa ihapu shili. Nge kwi kwete oto kala modolongo eemwedi dihapu. Na vali dimbulukwa, oto etifile mwene weumbo leni omo we uya okupashiyona oudjuu munene.

Ovakwetu amushe ovo mu li mOushimba, nge tamu dengelwa eendelekelama kovashivikile veni ve li mOwambo, va hala okuuya okupashiyona kunye, va alulileni elaka lombili: Ileni, ndele inamu etelela nande epangwe, opo nge tave uya, mu kale pamwe mu nombili no ngenge tava ka shuna va ye ve na ombili.

Ovawambo paife twa lukwa edhina lii unene eshi taku ti: "Ovambopangwe". Ovakwetu, edina eli olii unene fye katu shi ovambopangwe.

Inamu kelelwa okupashiyona, ndele oveta otai handukile ashike ou ta ende nepangwe. Hano ileni nga mu pashiyone ku vakweni, ndele inamu etelela ashike epangwe.

Abraham Jakob,  
Windhoek.

### TU PA OMUDO MUWA

Kalunga e tu pameke noneudo e tu punike. Tu ama ngashi oudwaaliyo, tu diinifia ehupifo. Epangelo liwa tu pa noilonga yetu wapeka momaongalo aeshe.



Aanegumbo ngele ye nomukalo gwokulesha oohapu dhOmbimbeli, osho omumvo gu neyambeko.

## OSHIGONGI SHAA-EVANGELISTE KOTJIMBINGWE

Eti 16-30. 11. 1965, aevangeliste 17 aawambo yongerki yetu yOwambo-kavango, oya ningilwa oshigongitsikilo shawo. Oshilalakanenwa shoshigongi:

a) Okuhumithwa komeho moshilonga shawo oshidhigu yeshi na.

b) Okuhungwa kwoomwenyo dha-wo yene nodhomagumbo gawo yene. Omwevangeliste mukuluntu gwongerki yetu E. Angula, okwa li a hungu oomwenyo dhaevangeliste mbaka, mehempululo lyoondjo no meyimwene-neno megalikano. Otwa li twa mono omayambeko omanene ga Tate Kalunga.

Otwa li wo twa popithwa komubisofi gwetu omusimanekwa L. Auala. E tu hokololele uuwenda wawo sho ya yile koshigongi ku Addis Ababa, Ethiopia, otwa li twa kumwa shili nokunyanyukwa. Unene uukumwe woongerki ndhika oonkwa Luther sho

otwindji dhi na edhiladhilo limwe nombepeo yimwe. Okwe tu kumike omukumo moshilonga shetu. Ete tu yambekele mo musho, nani sigo ompoka ota dhiginine etumbulo ndyoka: "Otandi ku yambeke, osho na ngoye ka yambeke".

Okwa li wo kwa kundathanwa oongalo niigandjwa maamati omolwo-luhepo lwongerki yetu noongamba dhoshilonga shomwevangeliste muka mUushimba. Edhiladhilo enene olyo ndyoka. Ethimbo ndika olyo ethimbo lyokwendelelitha Evangelii lyoshilongo sha Kalunga. Aantu naa uvithilwe shili oohapu dha Jesus Omuhupithi gwetu.

Otwa li wo twa ningilwa ootunti ombwanawa komukuluntu gwoskola Seppo Löytty, ndhoka dha li oompe kutse. Kwa li e tu yakula nawa megumbo lye. Tangi omusimanekwa Seppo.

Omuwiliki gwoshigongi shika oye omusamane Pauli Laukkanen, ngoka e li mondjakulambinga ngashingeyi peha lyomusamane Marttunen. Okwa li a wilike oshigongi nawa.

Peha lyoshigongi: Ev. St. Itewa.

## ETSEYITHILO

Oshigongi shaambithi shoka sha li sha uthwa shi ka kale mEngela 14-26/2/66, osha lundululwa shi ka kale 18-30 4, 1966. Onkee elandulathano lyigongi mbyoka ya tumbulwa moshifo shOmukwetu sha Desember, No 24, otali kala ngeyi:

17/1-12/2/66 oshigongi shaalongi yooskola dhosoondaha.

31/1-12/2/66 oshigongi shaakulukadhi yaalongi yooskola dhoshigwana, aandongana naauninginino.

14/-26/2/66 oshigongi oshitiyali shaakulukadhi yaalongi yooskola dhoshigwana, aakwanyama naakavango.

16/-18/2/66 oshigongi shaanamagumbo aasamane.

## TWA DJOINA PONDANGUA

Mo 1941 otwa djoina pOnda-  
ngwa. Twa kalekwa ofika pombelewa  
yomuhona Shongola, nde omuhona ta  
ii: Omwa dimina tu mu ye moita?  
HEENO, fiyo opapa tai hulile? Omwa  
dimina tu oku ka kondjela edu leni?  
HEENO! Omuhona ta li vali: Keshe  
omulumenhu na ulike ominwe mbali  
keulu, a anene oukwaita. A kale omu-  
kwaita moita ta i mo, ye a longe



*Omufitaongalo Malakia Hauuanga na  
Neuasha Hetta moukwaita mokomboni  
yoita mu Tsumeb.*

## OMUDO OU WA YA

Omudo 1965 owa pita paife. Ta,  
tu u keukeni kanini. Omwa ningwa  
oikulumuna ta. Ove shiimb ou shii  
ihapu u dule nge. U tala okudja ku  
Januali fiyo pehulilo la Desemba. Ta-  
la yo osho wa longa mo. Tala opo  
wa lyatalyata na osho wapopya.

Otwa mwene mo odula ye tu pa  
oipalwifa. Otwa longa nde twa longa.  
Okwa kundanwa eenghundana doita  
nomadipaafano a udika momudo oo.  
Okwa kala omashilafano pokati ko-  
vapangeli, nokuli nedu letu la kala  
li li meenghundafana dinene. Penya  
na penya kwa udika omakolokoto.  
Pa holoka oiponga yomaludi mahapu.

Momaongalo nomomaleloongalo  
mwa kala eenghundafana. Omalenga  
neehamba da kala ngaha ile ngahena-  
nya. Meekamba mwa kala ngaha ile  
ngahenya. Moivilo mwa kala ngaha

oshilonga keshe hashi longwa komu-  
kwaita. Otwa yelula ominwe mbali.  
Omuhona okwa ti: Omwa tokola  
shili? HEENO!

Elalakaneno mufye ohatu ka ko-  
ndjela edu letu. Efiku limwe ovahona  
vetu ove tu ningila okino yomafano  
aa hae linyenge kekuma, ovakwaita  
ovo ve li keenhanda doovene doita ku  
Europa. Oko ne tu na okuya nge twa  
pu okulongwa odelela. Otwa mona  
nomesho etu einyengo lomafano, ova-  
kwaita va shakena tava yashafana, o-  
honde tai kunguluka, omidimba tadi  
toolwa momakambaba. O, otwa tila.  
Keengula sha oyakwaita ovashuuka  
mo mokamba (mokatyal) tava shu-  
na kOwambo. Elipopilo lavo oleli:  
Okoko mboli kaku nyikwa. Naa-naa  
ngomuwambo eshi a tile? Otamu i po-  
ngobe na mwene. Mwene ota ti: Itai  
kumwa. Ovakwaita ovawambo va li va  
djoinina edu lavo, va lundulula eano  
lavo.

Naapa yo ofye ovakwaita va Kri-  
stus twa ana efiku twa tambula Jesus.  
efiku olo twa pulwa poaltari. Omupa-  
stori wOmwene ta ti: Moshilongo sha  
Kalunga ohatu i mo hatu pitile mou-  
dju. Otwa anena yo oukwaita ou.  
Josua na Kaleb ova ti: "Otu na  
Kalunga, ohatu fiki mo mu Kaanan."  
Nena eli ou li ngahelipi neano we li  
anena Omwene?

Malakia Hauuanga, Tsumeb.

ile ngashi u shii. Vamwe ya kala mo-  
mudo oo ve nombili, manga vamwe  
va kala ve i nyekwa kusha. Moma-  
du nomuletu mwa longwa oilonga  
inai longwa mo shito. Umwe ta yolo  
oongadja, mukwao ta yolele kenyeme.

Vamwe va tamanana. Momudo  
oo vamwe va dipaafana. Edu yo la  
'yatwalyatwa unene momudo oo. U-  
nenenene twa udifilwa evangeli, kape  
na ou ine li uda efiku limwe, shapo  
oshipwakapwaka. Mwa fa mwa de-  
daukila unene momudo oo. Twa fa  
hatu livele eembedi, nge hatu u tale.  
Pamwe wa pita mo ino pa mukweni  
ombili, nande we mu shindile. Tu  
liveleni eembedi, tu tye ngomuteeloni:  
Omwene file nge onghenda, osheshi  
ame omulunde.

Paife twa yuka momudo mupe.  
Kape na ou e shi eshi tashi ka kala  
mo. Walye eshi to ka kala, ngeenge  
oto ka tilifa ovanhu ile walye.

## TONATA IKOLELELA

Kaleni mwi ikolelela mOmuwa  
mwaa tenguke. Omwa pewa okuhe-  
pekelwa Kristus, haku mu itaala ashi-  
ke. Kaku na ngoka ta landa epya  
eta kala mo ite li longo. Oku noku  
li longa opo a paluthwe kulyo. Elago  
lyetu oli li peteyo. Inamu tilithwa  
kuuyuni mbuka. Kondjitheni omako-  
tokelo ga satana. Tala omufuthi sata-  
na kaa fule egumbo lyoye. Kaleni  
mwi ilongekidha, oshoka Omuna gO-  
muntu ote ya ethimbo inamu li ise-  
ya.

## WE KA MWENE OOVE HO KA TONGO

Onda li noudjuu eshi nda ya mo-  
ndjato yange yoimaliwa, ndi kufe mo  
R1. 00, opo ndi fute ndi mone oifo  
yOmukwetu luvali mohani na osho yo  
shEhangano.

Eshi nde shi ninga, taa! Onda  
mona mo ouwa muhapu ndihe shi  
oku u tonga. Onde lipopila: Hanga  
nde lika nee koshitayi, nani oimaliwa  
yange oya hepuluka. Ou iho lesa  
Omukwetu, ino mona ouwa natango.  
Omu na omapukululo, omalombwelo,  
omahanyeno nouputa muhapu wo-  
maludi. Tamu monika yo luhapu oi-  
meno yomedu letu. Eshi ashishe osha  
hafifa nge unene.

Nye ovo hamu shange Omukwetu  
novaleshi nye amushe hamu tumu  
oinyolwa yeni kOmukwetu, Omwene  
ota ti: Itadi aluka di li hamungaho,  
ndeletadi longo oshilonga shado  
oshoda tuminwa. (Jesaja 55: 11.)

Titus Namunyekua,  
Walvis Bay.



*Oohapu dhoye odho oshili. Okulesha  
oohapu dhOmuwa oku nelago.*

## OSHIKOLOLO SHEGUMBO

### IKOLITHA NOONDJOKANA

Osha fa ngaa oshidhigu ihe ohe-nda unene kaamwameme ayehe omo-lwa oondjokana nkene tadhi teka po kiikolitha. Omulumentu a tungu oka-mba, ye egumbo te li thanga. Nena oluvalo nomuhokanwa otaya kanitha ondjelo na oluhepo talu ya nokuli. Oshoka kokamba oku na ko siku limwe aakiintu pamwe yaali.

Tala ko nee omuhokanwa ota nika oluhodhi shili. Nokuli ota kala a fa omuselekadhi natango. Oh, otatu pumbwa natango ekumagidho nepa-pudhuko kombinga ya tya ngaaka.

A. Eelu Shuuja,  
Oranjemund.



*Eelu Shuuja*

### AAKWIITA YA KRISTUS

Tango tala Ef. 6:10-20. Nge wa lesa mpono, oto vulu okumona nke-ne omukwiita gwa Kristus e nokuko-ndja. Paulus mepistoli tuu ndika ota ti: Ihomatekeni ikondjitha ayihe ya Kalunga.

Tala nawa oshitya sho ayihe. Omo tatu adha ikondjitho ayihe, mbyoka omukwiita gwa Kristus ta yi nayo kiita. Oya topolwa ngeyi: a) Oshili yi kale moombwetelo. b) Uu-yuuki u kale pontulo. c) Eilongekeko tali zi mevangeli lyombili. d) Ehuya-nza lyeitaalo oshidhimitho shomulilo gomutondi. e) Egala lyosheela lyehu-pitho negongamwele lyombepo, tashi ti: Oohapu dha KALUNGA.

Tala movelise 18-20, opo u mo-ne kutya ikondjitha otayi monika ngiini. Pamukalo nguka aguke omu-ntu ta vulu oku yi mona. Moma-

galikano gesiku kehe ongula nongulo-hi, uusiku nomutenya nokwaa nezi-mbuko.

Tse aantu otu nomaipopilo oge-ndji, ngiika to ti: Hangaye ndi shi te lombwelwa? Mbyono ilonga yaasita naevangeliste naataleli naalongi na ayehe yopongulu, tse ha tse. Ee, osho nga, ndele otwa puka shoka tu li medhiladhilo ndi.

Tu yeni pUulalelo Uuyapuki. O-haku tiwa ano ngini? Ipula po mpo. Omuwa ina tya omusita nenge mbo haa ti oyo taa lombwelwa. Okwa ti ngini ano? Okwa ti: Inda, oye ngo? Ndi shi omukriste kehe tse na ngo-ye? Osho omukriste oshilyo kehe sho-ngerki, osho omukwiita gwa Kristus, onkene nduno atuheni otwa tegelelwa, omusita naakwanegongalo wo. Ano tu ihomatekeni ikondjitha ayihe ya Kalunga, tu dhime ikuti yomutondi ya hwama omulilo.

Petrus Mateus.

### OSHIPONGA PO- NESI

Esiku eti 29/9/65, omvula oya loko komatango. Olwaadhi olwa dhe-nge nolwa fike po ongulu mwa adhi-ka omuvu gumwe nomuyakuli gwe. Esiku ndyoka otwa mono uuwanawa wa Kalunga nuageyi we. (Roma 11:22.) Uuwanawa wa Kalunga owo mboka, sho omulilo inagu lungunithila

mo omuvu nomuyakuli gwe. Oya hu-pu kohendalela, nando ya li mokati koshiponga oshinene.

Onke ano Kalunga komegulu na hambelelwe sho ina yona po aantu ye kchwamo lyomulilo gwe, nando oye oti iholola moohapu dhe oye omulilo hagu lyana. (5Mos. 4:24.) Kalunga na hambelelwe sho ina tetekelitha uu-geyi okufika po aantu, ondunda tu ayike.

Jason Auala.

### EEMBUTO DA TB NEENHE DETANGO

O TB yovene ohai etwa kouni-ma ve na omwenyo va lukwa "eem-buto doudu."

Ngeenge umwe oku na TB koma-punga, eembuto edi ohadi lihanene omapunga aye, ndele tadi ningi mu-ye oipute neembululu. Omunhu oo nee ngeenge ta kolola, eembuto odo ohadi lihanene momhepo. Tadi ingaa-na momhepo. Umwe nee ou e li po, eshi ta fudile mo, omhepo ei tai i mo mboli oi di na nee. E di fudila po nee. Ye ou ota dulu nee naana a kwatwe ku TB.

Eembuto edi ohadi hangika yo moinghololo ya ou ta vele TB. Nge-nge omunaudu wa TB a fiyile pedu, unene polupanda ile kekuma londu-da, opo a fiyila otapa kala omamili-yona eembuto edi, otadi kala ngo di na omwenyo oule weemwedi 6, une-ne ngeenge opo da fiyilwa ile onduda oyo oilaula. Ndele ngeenge mondu-da omo ile opo polupanda da fiyi-lwa tapa yi eenhe detango ile hano tadi pi komutenya, eembuto edi ota-di fi filu. Pokafimbo kanini adishe oda fia po. Onghe u wete vakwetu ovatiliane hava tungu eengulu di na omakende. Otashi ti opo di ye yoo eenhe detango, ouyelele. Opo eembu-to domaudu di fie mo, unene da TB diha mone omhito osheshi alushe o-tadi kongo opo pa laula. Ohatu mo-no nawa nawa oinima ii alushe oya landula ekako nomulaulu.

Onawa shili ngeenge eembuto hadi dipawa po komutenya, ohashi kwafa okwamena diha tandavele vali unene. Na ha unene vali ovakwatafani vo-munhu ou tava kwatwa ku TB.

Eendjuwo dihe na omakende o-dii, kadi na eveluko. Eembuto diha-pu doudu odi na oupu okutandavela nokukwata keshe ou te uya mo. Ee-nduda odo da ningwa omakende odi na shili eveluko. Shaashi ohadi ete-lwa ouyelele keenhe detango. Omhe-po italala otai uya mo nawa. Ee- mbuto domaudu mahapu ngaashi TB ohadi dipawa nawa keenhe detango no kadi holafane momhepo italala nawa.

Elundululo la dja mu SANTA,  
L. M. Hauala.

# OSHIKOLOLO SHAAGUNDJUKA

## MINDOLO ECUMENICAL FOUNDATION:

O, Mindolo oo, Mindolo! Ehala ndika oyi li peni mbela na mevi lini po? A, haaa, oyi li mu Kitwe, N. Rhodesia mo Republik ye Zambia. Edhina ndika ohaye li fupipike ngeyi M. E. F. Ehala ndika oya topolwa mitopolwa iyali, shotango: M. E. F. na oshitiyali ohashi ithanwa "Africa Literature Centre", moka nda putu-



Mefano ndika tamu monika aalongwa yamwe yomuskola yokufaneka 1965 mu Kitwe, Zambia. Okuza kolulyo oyo G. Kahilu, J. N. Auala, L. Ntsama, T. Simpasa na ngoka a lala B. Nkongolo.

dhilwa mo omafaneko gi ili nogi ili. Omushangi gwiifo L. M. Shemuvalula, oye gwtango omuwambo a putudhwa meha ndika, ngame omutiyali na K. Dumeni a ningi omutitatu. Omahala ngaka ohaga longele kumwe pauvathano.

Ehala ndika oya simana shili noonkondo, oshoka omo to vulu okutsakanena naakriste oyendji yokombinga noombinga dhomavi gi ili nogi ili, yomalaka gi ili nogi ili, yomaitaalo gi ili nogi ili noye na ishewe omikalo dhawo dhi ili nodhi ili.

Ayehe ohaa gongala pamwe mongerki yimwe nokuhambelela Omushiti gwawo Jesus Kristus, ngoka Omukulili gwaakuuyuni ayehe. Shika ohashi ningwa nopwaa na nande okatongotongo kutya, oyoongerki dhini po na oyomaitaalo ga tya ngiini. Kape na wo okatongotongo pokati komuludhe nomutiligane.

Shika okwa li sha kumitha ndje shili na onda dhimbulula kutya, ceno shili Jesus oye Omukulili gwomukuyuni kehe.

Ehala ndika M. E. F. omu na oosikola odhindji dhi ili nodhi ili na mudho omo wo tamu adhika oseminari yaagundjuka (Youth Seminary) moka aakuluntu yiigongi yaagundjuka haa kundathana nkene ye na okulela aagundjuka yawo. Elago lyetu enene oyo ndyoka sho omukuluntu gwiigongi yetu yaagundjuka, omusamane Kleopas Dumeni, a li a mono ompito yokukala miigongi iwanawalela mbyoka, opo a vule oku ka tsikila

oshilonga she ishewe nenyanyu mokati kaagundjuka mOwambo. Kalunga na hambelelwe.

Oshitopolwa oshikwawo sha M. E. F., shoka hashi ithanwa Africa Literature Centre, pafupipiko: ALC osho oshi na ooskola dhomaludhi gaali ageke, yotango: ALC Art studio, moka nda putudhilwa omathaneke giithanekwa oyindji yi ili noyi ili pamaludhi gawo. Ithanekwa mbyoka otayi ka longithwa momambo nenge miinyolwa yuukriste. Omulongi gwetu oye M. Murray, omukanada. Omulongi ngoka oye omunambili shili na ohe tu kwatha aluhe miilongwa yetu nenyanyu.

Oskola ontiyali oyo: Writing Centre, moka aalongwa taa putudhwa okushanga omanyolo gopaukriste. O, taleni tate Shemuvalula nkene ta shanga omahokolo noonkundana odhindji dhuukriste dha towala nawa nenge ndi tye dha dhenga pombanda. O, ceno o, oshoka okwa li a putudhwa nawa moskola ndjoka yoaamushanga yiinyolwa yuukriste meha ndika nokwa zi ko a pupyala ngaaka.

Omukuluntu gwehala ndika alihe Mindolo nenge ndi tye omunashipundi melelo lyoskola ndjika ayihe, oye Dr. Donald M. Timkulu na omukuluntu gwoshitopolwa sha ALC. oye omusamane Bengt Simonsson.

Omuwa Kalunga na hambelelwe ye na simanekwe omolwa iilonga ye iintne yaa shi ku yelekwa.

Omushangi,  
Josef N. Auala



Aanaskola aakagumbo mOmundaungilo naalongi yawo, ya nyanyukilwa omasikumbimbeli moskola yawo.



Aanona mbaka oya hempulula oondjo dhawo noya taamba Jesus Omukulili gwawo momasikumbimbeli.

## METHIMBO LYOSHIGONGI MU ETHIOPIA

Ilyo yongerki yetu sho ya thikile mu Ethiopia, oshigongi no sha tameke ihe. Omusimanekwa, omukesari wa Ethiopia, Haile Selassi, oye a tameke oshigongi shiyaka.

Omukesari omusimanekwa Selassi oku hole ukriste. Momumvo 1955 sho kwa ningilwe mu Marangu oshigongi shaakwaLutheri, okwa tumine

ko omakundilo. Sho omumvo 1960 mu Antsirabe mwa liishewe oshigongi osho tuu shoka, omukesari okwa tumine ko ishewe omakundilo ge. Nena oye ishewe a zimine oshigongi shika shomu Oktober 1965, shi ningilwe moshilongo she.

Omukesari Selassi oye wo a kwatha nokwa popile Oradio yokutuma oohapu dhEvangeli, yi kale tayi longo nawa moshilongo she. Moshipopiwa shetamekitho lye, amatumbulo gamwe e ga popya ogo ngaka:

Otatu pandula iilyo yoshigongi shika yomu Afrika naa mboka yomu America, Europa, Asia, sho mwe ya po.

Moshinyanga shika omwa gongala nalenale iilyo yoongerki, ngashi wo hayi gongala miilongo yiilwe, okukundathana iimpwiyu yoongerki nehangano lyadho, elongo lyoohapu dhEvangeli no sha eta enyanyu, sho aawiliki ya kala nomadhiladhilo gokulongela kumwe nokukala kumwe pambepo. Nena aakriste yomaitaalo oye noshimpwiyu shokugalikanena uukumwe waakriste. Okwa halele oshigongi eyambeko lya Kalunga.

Omupresidente gwOngongahangano yaakwaLutheri, Dr. Schiotz, ngoka a li wo omuwiliki moshigongi shoka, okwa pandula medhina lyoshigongi ashihe omukesari nokwa holola, nkene oshigongi tashi mu dhimbulukwa aluhe nohole. Okwe mu halele oonkondo dholutu nuukolele miilonga ye.



*Mefano eli otu wete komesholela kolumosho omukesari wa Ethiopia, Haile Selassi, pokati oye Dr. Fredrik Schiotz, omupresidente wOngongahangano yovakwaLutheri. Kolumosho oye omuministeli Ato Emmanuel Abraham, opresidente yongerki onghwaLutheri mu Ethiopia. Omafano oga LWF.*



*Omuhongi Manfred Lundgren, hamushanga wepangelo letumo mu Afrika, tava minikafana nomubisofi L. Auala. Omufita-ongalo Natanael Sironko ota monika yo mokati kavo.*

## OPE NEKWATHO LYA SHIKE?

Otashi kwatha shike omuntu nando ni ilikolele uuyuni aube ye ta kanitha omwenyo gwe. Oongoka a hala okumona omwenyo, oye na kelele elaka lye kuuwinayi nomilungu dhe koohapu dhiifundja. Kalunga nge te tu gama, olye ta tsondumbo natse? Oye ote ku papatele momaako gohole, twaa pumwe nando koshiponga.

Eeno, ohapu yomushigakano oya nikila uugoya oomboka taa ka kana.

Ihe kutse mbaka aahupitwa, oyo oonkondo dhetu. Nokwitaala aaIsrael ye ende pokati kefuta ongopevi. Omlweitaalo Abraham okwa zimine okugandja omwana. Shika oshe mu yalulilwa uuyuuki.

Ookuume, na tse wo tu piteni mefuta lyuuyuni mbu, tu na omukwateli gwetu e tu li komeho. Ethimbo kehe tu na Jesus Kristus emanya lyekuvu!

S. J. Nakashona,  
Swakopmund.

# OUNYUN OTAU TONGO SHIKE

## ELUNDULUKO MU RUSLAND

Ehangano lovaRusia olo hali ifanwa Sowjet-Unie, olo hali ufa oikwa-ukommunisme momadu Rooi lande, la hangwa komashilafano mulo vene. Vahapu vomoilongo oyo otava konakona changano olo ndubi tali pangele nde ye wete la kulupa. Epupi lipe tali pula omalunduluko mawa mape nde ve wete eenghedi dikulu da manga omauwa mahapu. Umwe a popya kutya, efimbo likulu ola pita po nale, twa hala omaudafano mape.

## KOHANI TAKU KONAKONWA

OvaRusia novaAmerika ova tumali oyeendeleli i ka tale tuu nawa oukwatya wohani. Ova fika lunga nawa nde va faneka nokukonakona oukwatya nomushitilo wako. Ovo va li moyeendeleli oyo ova alukila nawa kedu nde va hafelwa keengudu dinene. Sha kamba ko oku ya kuyo vene, shaa wa talela uta.

## POKATI KOILONGO OPE NA EENDAKA

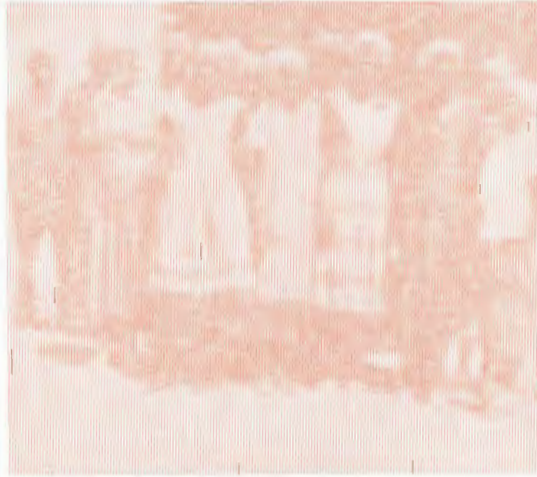
Ounyuni inau pola. Pokati koilongo noilongo, omapangelo nomapangelo, ope na oohalundilili. Vamwe va hala okuli pa meefenya nomalwodi. Oyoongalele i lili noi lili ihai pu okwongala. Oohalundilili unene ove li pokati ngaho koluvala litilyana na lilaula.

## EESHI TADI KUNDAFANWA

ROME. - Ehangano loikulya nolounamapya la V.V.O, olo li na cembelwa dalo mu Roma, ola udaneka li ninge oshiongalele sheendunge, shi kundafane okwamena ceshi di ha pwe po filu nde di hapupale no di palule ovanhu mu Wes-Afrika.

## DUMENI A GALUKA

Omukulunhu wovanyasha Kleopas Dumeni, sho a kala okathimbo moshigongiskola yaagundjuka mu Zambia, okwa galuka ye ya pamwe na Josef Auala. Edhiladhilo lye lyokuyambula nokufala komeho aagundjuka yOwambokavango, otali tu nyanyudha. Okwa pukululwa nawa hwiya, a mono omikalo dhoshilonga she sho a kala pamwe naawiliki yaagundjuka yomugwana yi ili no yi ili. Ota kundile po aagundjuka ayeheyehe sho a ti: "Otatu tala omumvo tagu ya omahini genongo ngele taga fe gongombe."



Aalongi yomUukwanyama ya gongala mumasikumbimbeli mEngela.

## OMAHOOI OKWA KONGWA PEENHELE

Moitukulwa ya Suid Afrika: Sutherland, Fraserburg na Richmond, omwa mboolwa eemboola, keshe omboola i na oule womedu konyala eefute 12,000, okukonga medu omahooli.

Omusamane G.S.J Kuschke, omukulunhu wehangano lokukonga oikwamahooli, okwa ti kutya, itashi ti opo pwa mboolwa ngaha ope neefifiya medu domahooli, ndelene okutala ashike nge pe na sha moitukulwa oyo.

## OVENDUKA OTAI MONO OFABULIKA YEERADIO

Ehangano lomovenduka, edina lalo Thompson Radio, olo nokuli la longa eeradio odo da lukwa "Thora", otali ka longa paife eeradio dihapu mofabulika yalo mOvenduka. Ofabulika oya fanekwa i tungwe omudo tau ya. Omukulunhu woshilonga eshi oye Raymond Thompson.



Kleopas Dumeni

## OSHIPONGA MOMINA

Mu VIRGINIA mwa dja eenghundana kutya, ovalaule vavali ovo aveke va tupuka mo moshiponga shomina, oyo ya wila ovanhu 14 va fya. Ovakhwafi va konga noudjuu omidimba nde koma kwa monika koshi yomamanya momina ovanhu ovo vavali va li nomwenyo, nande va lemanekwa nai komakilipi. Paife vati otava hakulwa moshipitali.

## OMHEPO IDJUU

Eenghundana domu KARACHI, otadi ti: Omhepo idjuu (sikloon), ya pepa nde ya fundaula moshilongo osho, konyala oya dipaa ovanhu 25,000. Eshi osho oshinenenima mefimbo eli. Omhepo ei yoshikungulu oya pepa neendelelo lemaila 100 kovili moushilo woshilongo Pakistan. Oya eta ehanauko moimima ihapu.

## I ILONGO KU ZAMBIA

Josef N. Auala, ngoka a putudhilwa oshilonga shokufaneka omafano (art) omumvo gumwe mu Zambia, okwa galuka nawa. Otwa adhika nale twa mono uukalata womafano omawanawa nomatumbulo goohapu dha Kalunga mopoosa, mboka Auala e u faneke hwiya, Uukalata mboka otau landithwa mu Africa alihe ngashingeyi.

Oshilonga shokufaneka shoka Auala e shi longwa hwiya, oshomoshilonga shiinyolwa yuukriste. Oyo nduno taa faneke omafano ho ga mono momambo, kiipeko yomambo, muukalatafano nosho tuu, ngoka taga kwatha omuleshi wembo oku uvaiko shoka ta lesa, oshoka omafano momambo ohaga kala ge nekwatathano noshipopwa sho shi li pulyo. Ope nomafano omawinayi, ihe Auala a putudhwa okufaneka omafano guukriste, euvitho lyevangeli. Oye tu wete omuwambo gwotango okumona onzapo yoshilonga sho. Omuwa na yambeke oshilonga, te ke shi longa.

## OMUDO MUWA WELAO

Omukwetu noshilonga shaye ota halele ookaume kaye, ovaleshi noonakulonga pamwe na ye aveshe, Omudo Muupe muwa welao!

## OMWENE NA HAMBELELWE

Ohandi hambelele Kalunga no-mutima aushe mokukala momudo 1965. Onda pita mo nawa. Eengeleka detu domOlange otadi longele nawa kumwe. Pama otu li nokuli modula ipe. Otwa dalelwa okaana Jesus. Ehafo nena olinene.

Ohatu fimaneke Kalunga kalushe Omushiti weulu nedu na Jeeus omukulili wetu. Omitima nadi nyakukwe, keshe omunhu na fimaneke edina IOMwene, Halleluya.

Jason D. J. Samuel,  
Oranjemund.



Jason Samuel okwe tu tumina omakundo mawa. Oye owongerki ya Roma kOlange.

## OLUPALE LWEONGALO

Omuyakuli omukwetu, nande omumati ou weongalo leni taka fikifa ngaa ye mwene ondombwedi yaye yepameko, nda hala yo ndi ninge ondombwedi onhivali oku ku shiivifa efiku lepameko laye, osheshi vahapu vomovamati ihava fikifa nawa oukalata vavo kolupale leongalo javo.

Efiku olo ola li eti 7. 11. 1965, omo nda yakula ovamati ava mongerki yomu Katutura mu Windhoek.

Efiku	Edina lomumati	Eongalo	Omukunda
7. 11. 1965	Ovakwanyama		
1.	Filemon Kashamba	Endola	
2.	Lasarus Hamukwaja	Ondobe	
3.	Mateus Nghimane	Engela	Oipja
4.	Naftali Johannes	"	
5.	Teofilus Arkelaus	Onguediva	
6.	Wilhelm Shapumba	Ohalushu	
7.	Sostenes David	Ongenga	
7. 11. 1965.	Ovandonga		
1.	Andreas Nekomba	Onajena	
2.	Armas Amomo	Omuntele	
3.	Ferdinand Thomas	Okaku	Okapja
4.	Filemon Viktor	Oshigambo	
5.	Jesaja Sakaria	Eheke	
6.	Kesas Lukas	Olukonda	
7.	Mateus Shiguedha	Onjaanja	
8.	Petrus Barnabas	"	
9.	Simon Nehale	"	
10.	Reinhold Amwalwa	Oshigambo	
7. 11. 1965	Ovakwambi		
1.	Fares Kuutondokua	Elim	
7. 11. 1965	Ovangandjera		
1.	Eino Shivute	Etilyasa	
2.	Elieser Hango	Okahao	
3.	Erastus Iigonda		Iipanda
4.	Stefanus Amwalwa		
5.	Kristof Filemon		

Josua Hanjango

## EPANGELO LYOSKOLA (DEPT. VAN ONDERWYS) KALI NA OONDJO DHOMULONGI INAA PEWA ONDJAMBI YE PETHIMBO

Ope na aalongi oyendji mboka haa pe Epangelo lyoskola mOvenduka uusama ngele inaa mona oondjambi dhawo pethimbo lyo opala. Na ngame wo onda li mongundu yaambaka, ihe ngashingeyi sho nda konakona oshinima shika, otandi popile Epangelo lyoskola kombinga ndjika.

Olwindji omulongi ngele ina mona ondjambi ye uule woshikako nenge iyali, nena otashi ti elangeko lye inali thika ko kombelewa yomalangeko mOvenduka. Sho twa kundathana naanambelewa mbaka yomalangeko, oya ti oombapila dhomalangeko mOwambo ohadhi tegwa dhi ninge ondumba mombelewa yEpangelonongelo opo dhi tumwe nawa kOndangua nokOvenduka. Yo aniwa opoosa ohayi vulu okuninga oomwedhi pokati komapangelonongelo nOndangua. KOvenduka otadhi ya dhi thike ko konima yoomwedhi noomwedhi. Onkee ano aalongi oyendji mboka opo ya langekwa nenge ya lundulululwa haa ningi iikako oohiyali noohitatu inaa mona oofuto dhawo.

Mpaka otandi indile oohamushanga yetu yomapangelonongelo, ya kwathe aalongi yawo ya mone oondjambi dhawo, opo iilonga yaalongi yaa piyaganekwe komaipulo gomauthigona. Onda hala wo okukumidha aalongi mboka inaa mona oondjambi dhawo natango kutya, otaye ke dhi mona dha gwana po etaa ka dhimbwa uule wetegelelo lyawo, Odepartemend ondjuuki.

Otandi mu kundu aalongi aakwetu amuhe mevi lyetu.

Omukweni moshilonga,  
J.J.Nangutuuala,  
Ombelewa yE'aka,  
Ovenduka.

Ngenge to tumu efano loye li tulwe mOmukwetu, ile to pula sha wa hala enyamukulo, tuma ekutu li na ostombe nge ou li kOushimba.

FINSE SENDINGDRUKKERY  
OVAMBOLAND  
ONIIPA