



# OMUKWETU

No 3

MALITSA

1964



## G O L G A T A

1. KuGologata a alelwa,  
OMuwa a hepekela ndje  
Omunandjo ndi hupithwe.  
∴Oti igidha: “Sha longwa,  
Sha pwa nena ndji”∴∴
2. Omuti omudhigu ngo, a leka  
OMuwa a pushililila  
Molwa ndje ndi hupithwe.  
Oti igidha: “Sha longwa,  
Sha pwa nena ndji”∴∴
3. Ngund’ onene ndjo, a shekwa  
OMuwa a hunganekithwa,  
Rabbi, oye e ku dhenge.  
Oti igidha: “Sha longwa,  
Sha pwa nena ndji”∴∴
4. Ta galikana, oMuwa ngo:  
“Tate, ya dhimina po.  
Kaa shi wo shoka taa ningi.”  
Oti igidha: “Sha longwa,  
Sha pwa nena ndji”∴∴





Malitsa 1964.

## OONGERKI OONKVALUTHERI DHOMUSUID-AFRIKA

KuJohannesburg eti-4 lya Malitsa kwa li ku noshigongi shoongerki oonkwaLutheri dhomuSuid-Afrika (CCLF = Council of Churches on Lutheran Foundation). Oshigongi sha tya ngaka hashi ningwa omumvo kehe. Nonuumvo ongerki yetu ya tumine oshigongi shoka omubisofi nomukuluntutumwa. Moshigongi mwa li mu naatumwa lu 30 ya zi moongerki nomomahanganotumo. Muyo mwa li mu naabisofi yatano, ngashi omubisofi Pakendorf ngomuwilikihapu nomubisofi Fosseus ngoka okwe tu talele po keNgela 1959 nomubisofi gwongerki yaMoravia oye P. W. Schaberg ngoka tatu mu tegelele okuya oku tu talele po mOkotoba nuumvo.

Moshigongi sha tetekela mwa holoka efaneko lyekotampango lyehangano (federation) lyoongerki oonkwaLutheri dhomuSuid-Afrika. Efaneko ndyoka lya konakonwa momapangelongerki nolya kundathanwa moshigongi shika. Mefaneko ndyoka tamu holoka nawa onkalelo nelalakano lyehangano lyoongerki ndhika.

“Ehangano lyoongerki oonkwaLutheri dhomuSuid-Afrika olyo ekwatathano lyoongerki oonkwaLutheri nolyomahanganotumo. Olyo kali noonkondo okuutha sha kombinga yiilyo yalyo nenge okuguma meipangelo lyayo” Ehangano ndika tali lalakanene. (Ont.2).

“(a) Okuvala onzapo ya hangana yevangeli lya Jesus Kristus ngoonkondo dha Kalunga dhokuhupitha.

(b) Okuhumitha komeho uukuumwe womeitaalo nomehempululo mokati koongerki ookwaLutheri dhomuSuid-Afrika.

(c) Okuyakula nokupopila iilyo yalyo miinima mbyoka ye li inekelelwa, ngashi:

1. Ongongahangano yoongerki oonkwaLutheri adhihe dhomuuyuni (LWF = Lutheran World Federation) nomahangano goongerki oonkwaLutheri muAfrika alihe.

2. Ongongahangano yoongerki adhihe dhomuuyuni (WCC = World Council of Churches) nongongahangano yoongerki adhihe dhomuAfrika (AACC = All Africa Conference of Churches) nomahangano gopokati koongerki.

3. Omapangelo naapangeli aakwawo yoshilongo.

(d) Okuhumitha komeho mokati kaakwaLutheri ekwatathano nelongelokumwe mokwilonga.

(e) Okusila ekwatathano ekwaLutheri nomahangano gopokati goongerki oshimpwiyu.

(f) Okuhumitha komeho ekwatathano ekwaLuteri lya hangana mukuhumbata iilonga ngashi etumo, eputudho, omambo, oradio n. sh. t.

(g) Okulongekidhila aakwaLutheri ekwatho moompumbwe dhopambe po nodhopalutu.” (Ont. 3).

Elongelokumwe lyoongerki ndhika lya eta nokuli iiyimati:

Omu noshifo shuuteologi CREDO (“ondi itaala”) hashi opalele okuleshwa kaasitagongalo nokaalongi sha nyolwa moshiEnglisha nomoshiAfrikaansa. Omusita Kleopas Dumeni e noshimpwiyu shokunyolitha aaleshi ya CREDO.

KuRoodepoort oku nombelewa (studio) lyokugongelela RADIO yokuAddis-Abeba omalandulathano. Tse tu netegameno kutya, omalandulathano gomomalaka ga SWA taga tamekululwa moRADIO.

Kompumulo oku noskola yuusita yoongerki ookwaLutheri. Omusita Apollos Kaulinge oku li moskola ndjoka.

Omu nuungundulongekidho wokukonakona omapulo gopauuteolohi ngashi moskola yuusita yetu yokOtjimbingue.

Unene manga ehanganu ndyoka lya fanekwa inali dhikwa otu nokukonga ekwatathano lya kola noongerki oonkwaLutheri dhomuSWA. Otu netegelelo kutya, ekwatathano ndika lyongashingeyi tali vulu okuvala mbala ehanganu lyoongerki ndhika dhetu. Eihanganu ndika tali etele iigwana ayi-ih eyambeko muSWA lyetu.



ONDJILA YEYAMBO LOHOLE  
YA KALUNGA.

1Tim.2:4-6.

Peshito Kalunga eshi a shita Adam, nokwe mu tula mwEden, kapa li omayambo okuyambela Kalunga, aye; omayambo okwa holoka molwokunyona kwa Adam.

Ndele Adam eshi a dimbulukwa kutya, ke na vali omhito yokwehena kuKalunga, okwa ka hondama pamwe nomuyakuli waye Eva, 1Mose 3:8-9. Kalunga okwa handukila Adam shashi ina dulika kefu la Kalunga.

Adam mokunyona kwaye Kalunga okwe mu tata mo mwEden. Adam eshi a ya pondje ya Eden, okwe lipula: Ondi ninge ngahelipi, ndi mone oshipala sha Kalunga kange?

Opo omunhu wa Kalunga pamwe noludalo laye ova kufa omilongelo domayambo. Pamwe tava mono oshipala sha Kalunga. Odjulufi ei osho ya kala mwAdam nomoludalo alishe. Kalunga eshi a mona odjulufi ei ya hapupala movanhu vaye, okwa dimina omayambo ovanhu vaye, 2Mose 20:24; 3Mose 1:7.

Kalunga eshi a mona odjulufi yo vanhu vaye, okwe va lombwela nokwa ti: Itai nyanyukilwa eefia domukeenakalunga, Hes.18:23; 2Petrus 3:9.

Molwodjulufi oyo Kalunga okwe va palela ondjila yeyambo lohole ya Kalunga, Heb.10:19. Okwa yandja oMona mounyuni, a ninge eyambo lomufita omukulunhu weedi, 1Tim.2:4-6. Kalunga okwe liyamba noMona Jesus Kristus lumwe aluke. Neyambo eli le liyambwa kuKristus ola ninga shili ondjila yeyambo lohole ya Kalunga. Osheshi Jesus mwene okwe shi ninga omolwohole yaye inene, shashi ina hala pa kane nande umwe, aveshe va hupifwe.



# J E S U S   T A   A L E L W A   K O M U S H I G A K A N O

Joh.19:16-30.

Okusa kwa Jesus okwo ehupitho lyaaluhe. Omupangeli Pilatus okwa kambadhala okupopila Jesus, ihe okwa nyengwa. Oye a dhiladhila wo ngiika ngele a dhengitha Jesus, ngiika ondjahi yaaJuda otayi polo, ihe nampoka inashi kwatha sha. Navulwa okwa gandja Jesus miikaha yaaJuda a ka alelwe momushigakano. Oye nando okwa li e shi lwete nokutya, Jesus ke nondjo yokusa, awe. Ano omolwethininiko lyaajuda kaa kwita a ka alelwe komushigakano, oMuwa Jesus okwi ihumbatele omushigakano gwe, okuya ku Golgata.

Otatu mono ohole ya Kalunga onene okuhola aashitwa Ye kombanda yevi, sho ta gandja oMwana Jesus omolwoondjo dhaantu ayehe. Jesus na alelwe komushigakano. Eeno oMuwa Jesus oku nohole nevuliko. "Ongame omusita omwanawa, omusita omwanawa ota gandjele oonzi dhe omwenyo gwe." Joh.10:15.

Omupangeli Pilatus a nyola wo komushigakano oshipalanyolo momalaka gatatu "Nguka oJesus omuNasaret, omukwaniilwa gwaaJuda," omoshiHeberi, moshiLatina nomoshiGreka nokutya, Jesus omukwaniilwa. Onke enyolo ndika lya Pilatus olya pukulula aantu oyendji kutya, Jesus oye omukwaniilwa, shili ke shi omuntu gwowala. Omalaka ngeyaka gatatu oga li ga tseyika noga li ga simana kaantu ayehe yethimbo ndiyaka. Ano mpaka otatu mono oMuwa Kalunga ota simanekitha edhina lyaMwana nokaapagani. Oshoka aasaseri okwa li ya hala Pilatus a lundulule elaka lye nenge enyolo ndyoka, ihe okwa tindi. Ano otu lwete omaenditho ga Kalunga naapagani ota vulu oku ya longitha uuwanawa.

Osho ehalo la Kalunga moku tu palela ondjila yeyambo, opo tu fike kuKalunga ketu. OMwene ta ti: Joh.14:6.

Kalunga ote ku teelege mondjila ei e i ku ningitha muGolgata.

Lihupipika koshipala sha Kalunga, ope e ku yelifile ondjila yeyambo lohole ya-ye.

Paulus Munalje.



Aakwita wo ya hempulula kutya, Jesus oYe oMuna gwa Kalunga. Mat. 27:54.

Aakwita oya topola omizalo dhe, kehe gumwe okwa hala a kale nomuzalo gwa Jesus. Omolwa shike aakwita ya hala okukala nomuzalo gwa Jesus? Itatu yi kokule, awe, otu shi shi eso lya Jesus oye ya hokitha omizalo dhe omolwombinzi Ye.

Mpaka ote pula kutya, oye eta shike kutse? Oye eta ano omwenyo gwaluhe neyambeko kutseni atuheni. Okusa kwe kwa likolitha aakwita mbeyaka omizalo dhe. Tseni twa likola omwenyo gwaaluhe. Joh.12:32-33.

Onke twa ningi aamwayina sho kwa si omolwoondjo dhetu. Ombinzi ye ya dhimi po oondjo adhihe. Ano otseni atuhe tu gandjeni oomwenyo dhetu koMukulili oYe oMwene gwadhho sho e dhi kutha muulunde uuwini. Kalunga okwa hanganitha uuyuni na Ye okeso lyomwana omuholike, opo tu thigulule omwenyo gwaaluhe, mombinzi Ye.

**Oye nokwa si peha lyaayehe, opo mboka ye nomwenyo yaa ikalele we yoyene, awe, onguka tuu e ya sile nokwe ya yumukile.**

2 Kor. 5: 15.

Ano tala kuume, otse na ngoye otu nuuthiga meso lya Jesus. Itatu pulwa we oondjo, oshoka Jesus okwe dhi futu. Owa mono tuu uuthiga mbuka?

Erastus Shilongo.



# O O N K U N D A N A D H O N G E R K I

## OSHIONGALELE SHOVAFI-TAONGALO

meNgela 1-4 .2. 1964.

Ovafitaongalo vongerki yetu no-valongwafita ova ninga oshiongalele shavo meNgela, ova kundafana oinima ihapu yomoshilonga shavo.

Ehangano leengerki. Ongerki yetu oi nelongelokumwe nongerki ei yomoUshimba yovalaule naai yovaNdo-wishi. Otai longele kuwe neengerki do-muRepubliki. Omubisofi wetu oye e li ponhele yeengerki domwAfrika ali-she loKolukadi, fimbo omubisofi Mo-shi muTanganyika e li moLundume, opo eengerki adishe eenghwaLutheri di hondjelwe kumwe mwAfrika no-mounyuni aushe.

Ovanyasha. Ovafitaongalo o-va kwatwa koshisho nhumbi ovanya-sha ve nokudiininwa. Ove nokuni-ngilwa oyoongalele yavo, ove noku-pewa oilonga, ove nokuhwamifwa mo-mhepo yoshilonga shetumo. Otava nyatipalekwa melongelokalunga nee-ndjovo da Kalunga.

Oiyandjiwa. Ovakwaneongalo vahapu ova ngona moyandjiwa, pai-fe otu nokulonga ongerki yetu opo i kale ongerki. Otu nokudulika kuKa-lunga. "Eteni oiyandjiwa ya wana kongulu yange."

Vakriste nye! Pashukeni, vakwe-tu, yandjeni' oiyandjiwa;

Kolekeni vakwetu mokuyandj' oi-yandjiwa.

Omuudifi Matti Koponen a udifila ovafitaongalo, ta ti: "Oto ke lipopila ngahelipi koshipala shoDjo-na, ngenge momambo eongalo loye omu nomadina ovanhu itava hupifwa? Oto ka nyamukula ngahelipi, ngenge mongerki mwa kala omunhu ta pwili-kine eudifo loye ndele ye ina hupi-fwa? Omufitaongalo ta longo oshilo-nga shaye nouhefi, ota valelwa mo-vaSodoma novaGomora." Ovafita ova dengwa pedu.

Elieser Tuhadeleni a holoka mo-shiongalele e noisho ivali: 1) Omolwa shike ou a nyona, ngenge ta hombolifwa na ou ina nyona, omoshinya-nga? 2) Omolwa shike ovafiekadi ita-va popilwa nande? Okwa nyamuku-lwa kutya, ongerki yetu otai kondjo neenghono moinima ei. Otai tekula ovana notai va yakula, ndelene otwa hala tetetete ehupifo lovanhu.



Ovafitaongalo vomoWambo novokoKavango moshiongalele shavo moNiipa 1963.

## OWA LI KO TUU?

OSondaha yotete yomudo 1964 muKatutura, oya li inene shili. Omao-ngalo aeshe ane: ovaHerero, ovaWa-mbo, ovaNama na ava voivala (kleur-linge), va ongala mumwe. Ongerki o-ya shita mo otundi onhi - 9 yongula. Ongulu oyo oinene, pamwe oi dule nokuli eengerki dihapu mu S. W. Afrika. Oya li iyadi ndo.

Konima yelongelokalunga omufita okwa udifa eendjovo dotekisti Rom. 8: 24-30. Okwa udifa moshiNama novatoloki va tukulila eongalo oupu-na wokomwenyo. Omufita a fatula

Opa kundafanwa oinima ihapu neetundimbibeli da popifa ovafitao-ngalo.

Meenghundafana adishe omwa holoka oshinima eshi, mboli ovafitao-ngalo otava pumbwa omailikaneno o-vayapuki.

Vayapuki va Tate  
Na fye tu pandekeni.  
Tu ninge sha namutete  
Mwene tu shakeneni.

Jason Amakutuwa.

kutya, ofye otwa hupifwa, tu li meteele-olo lihe wetike, osheshi eteelelo la e-shi shi wetike otali ididimikilwa nga-helipi?

Oshiwana sha Kalunga osha li yo sha teelega omuhupifi neididimiko fiyo omaudaneko a wanifwa.

Ofye ovakriste moiwana aishe nomalaka aeshe mounyuni aushe, o-twa kala twa teelega shike pokati ko-mido ei ivali, 1963 - 1964, oKrismesa noMudo Mupe? Otwa teelega tuu ne-lididimiko? Oonakuteelela vakwetu i-nava fika mo moivilo ei ivali, ove ke i dana moukwaalushe, osheshi katu noshilongo tashi kalelele, Iil. 3:20-21. OSondaha ei oyo inene muKatutura, osheshi mwa kala ovateeleli va sha-shife ile va shashwe. OMhepo iYa-puki ya longa meongalo laye, eshi mwa shashwa nena onunona 32.

Kalunga ota dulu okushitukifila Abraham onunona momamanya aa. OMhepo tai indilile ovayapuki, Rom. 8: 27-29. Oye te tu pameke, nota ulikile eongalo ondjila yokuya melao laalushe.

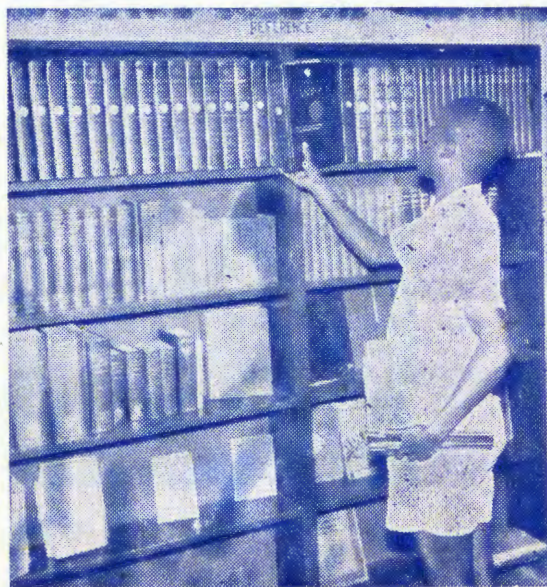
P. Frans Simon,  
Windhoek.



## OKAANDJETU

## APILILI

1. W. Iil.3:12-20. Mark.16:9-20.
2. Do. Iil.8:26-40. 1Petr.1:1-9.
3. V. 1Petr.3:18-22. 1Petr.2:10-12.
4. Sa. 1Petr.2:1-10. 1Petr.1-13-16.
5. S. oS. 1 ya landula Eyumuko.  
*Oonzapo dha ngoka a yumuka.*  
Iil.3:12-20. Joh.21:1-14.  
1Mos.32:24-31.
6. M. 2Tim.1:6-10. 1Petr.1:17-21.
7. D. 2Tim.2:1-5. 1Petr.1:22-25.
8. W. 1Petr.1:22-25. 1Petr.2:1-10.
9. Do. 1Tim.1:12-17. 1Petr.2:11-17.
10. V. 1Petr.1:3-9. 1Petr.2:18-25.
11. Sa. Jona 2. 1Petr.3:1-7.
12. S. oS. 2 ya landula Eyumuko.  
*OMuwa oYe oMusita gwandje.*  
1Petr.5:1-4. Mark.6:30-37.  
Hes.34:11-16.
13. M. Ef.2:4-10. 1Petr.3:8-17.
14. D. Mat.26:31-35. 1Petr.3:18-22.
15. W. Joh.21:15-19. 1Petr.4:1-11.
16. Do. 1Petr.5:1-4. 1Petr.4:12-19.
17. V. Joh.18:1-9. 1Petr.5:1-4.
18. Sa. Iil.20:28-32. 1Petr.5:5-14.
19. S. oS. 3 ya landula Eyumuko.  
*Ondjuulukwe yoshigwana shoMuwa okuya megulu.*  
2Kor.4:16-18. Joh.17:6-8.  
Jes.40:26-31.
20. M. Ef.4:17-24. Omayel.1:1-10.
21. D. Ef.5:25-32. Omayel.2:1-10.
22. W. 1Joh.4:7-14. Omayel.3:1-12.
23. Do. Iil.17:22-33. Omayel.4:20-27.
24. V. 2Kor.5:16-21. Omayel.6:6-11.
25. Sa. Rom.1:18-25. Omayel.8:12-32.
26. S. oS. 4 ya landula Eyumuko.  
*Omukwagulu muuyuni.*  
1Joh.4:11-16. Joh.17:11-17.  
Sak.13:1.
27. M. Ef.5:8-14. Omayel.10:17-23.
28. D. Joh.6:66-69. Omayel.14:26-35.
29. W. Kol.3:16-24. Omayel.15:16-27.
30. Do. Mat.21:12-17. Omayel.16:1-10,32,33.



## OLUHODI LAKATAU.

Ovanhu avesho vomoNaipa ovanambili ndishi, ndelene muvo unene umwe oye omunambili nokaume kaaveshe. Ame yo ta tambule nge nombili nde ta popife nge nombili. Oye omushamane Katau, omunyanyangidifimudiinini mokutungifa, mokunyanya, ngidifa omambo nomukongo. Edina laye limwe Hartikainen.

Ndele pwilikina nawa: ope na nga oshinima shimwe tashi mu nyikifa oluhodi. Osho omambo amwe oo e a nyanyangidifa nouidiinini nohole ndele ina halika kovanhu. Ta handuka nokuli eshi ta i moinima ei.

Fikulimwe nda li nde mu pula omambo elipipo te a pandula paife a landwe. Ta ti: "Kaume, popila unene oumbo ava vavali OONGALO DHONGERKI na EJELIFILO LOUNDJLOUELE."

Nde mu pula: "Mukwetu Katau, omolwa shike ovanhu ve nokulikongela unene oumbo ava?"

Katau ta ti: "Shike to pula? O ve mwene ino a leshe? Hai ti, ovaWambo ovaholike, omolwa shike va hala eendunge ndele inava hala oku di konga. Ngenge inapa leshe omambo, nena eendunge itadi hapupala. Tala ne omambo aa avala: Tate Nghipandulwa okwa shanga okambo aka OONGALO DHONGERKI omo ta fatulula nawelela eengalo dongerki nghe tadi diinwa. Omolwa shike ovanhu tava lundile nde tava limbililwa ndelene inava hala okukonga efatulu-



## AASI MONIMWANDI 1963.

Laimi	Martin	a	si	22.	2.	1963
Viktor	Nuule	-,-	-	16.	5.	1963
Israel	Silas	-,-	-	25.	5.	1963
Aina	David	-,-	-	4.	6.	1963
Taimi	Simeon	-,-	-	24.	6.	1963
Martin	Nuuyoma	-,-	-	22.	6.	1963
Petrina	Iikela	-,-	-	12.	7.	1963
Fenni	Jakob	-,-	-	23.	7.	1963
David	Katangolo	-,-	-	27.	7.	1963
Laimi	Shikomba	-,-	-	8.	8.	1963
Rosalia	Nashigonga	-,-	-	20.	8.	1963
Helena	Uutoni	-,-	-	28.	8.	1963
Katrina	Ashipala	-,-	-	4.	9.	1963
Linea	Nkole	-,-	-	7.	10.	1963
Simon	Traugot	-,-	-	9.	10.	1963
Jakobina	Shiguedha	-,-	-	23.	10.	1963
Simon	Vilhelm	-,-	-	?		1963
Johanna	Amugongo	-,-	-	10.	11.	1963
Selma	Ankama	-,-	-	13.	12.	1963
Hilma	Elia	-,-	-	14.	12.	1963
Selma	Erastus	-,-	-	17.	12.	1963

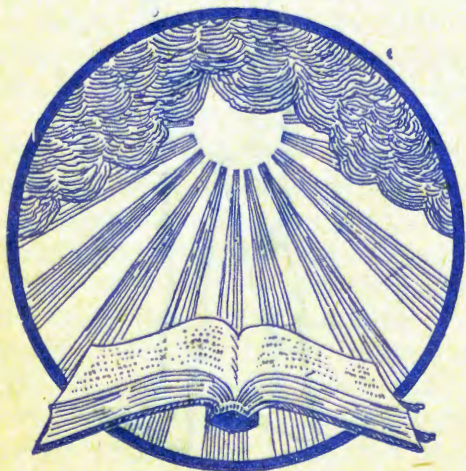


lo la yela naanaa. Seppo, ya fatulula nokutya, okambo keengalo taka pula eesente hembali netata adike. EJELIFILO LOUNDJLOUELE taka fatulula nawa omikifi dounyuni ou, ngashi eemhalo nepasha noudu wepunga noshotuu. Okambo aka taka pula eesente hetatu."

Ndi uditeko nga oluhodi eli la Katau. Na diinine osheshi eendunge domokati ketu da pumba moinima ihapu. Ngeno inatu nyanyangidilwa omambo nomapukululo mawa ngeno tu li momilema naanaa.

Ndelene, mukwetu ngahelipi? Inatu fatuka nge inatu leshe. Omambo mahapu tae ku teelee u kale okanyofi momilema dounyuni tuu ou tu li mo.

S. L.





## Oshoongalele shokundafana oshilonga shofikola yosondaha noshilonga mokati kovanyasha

28. 1.—1. 2. 64 meNgela

Ongerki yetu otai kulu moinima aishé, unene oya hala okukula nokufika kewano loukulunhu wa Kristus. Eshi osha monika moshongalele eshi sha ningwa apa meNgela. Oshoongalele eshi osho shotete mongerki yetu, osho tashi kundafana omwenyo wopakriste mounona nomovanyasha. Eshi osha holola poluhaela ekondjo longerki mokushingila ovanyasha nounona kuKristus.

Oshoongalele osha ongala ngaaishi sha shivwa. Omwa li: Ovafita aveshe vongerki yetu, novaevangeliste vovanyasha moitaingerki aishé ine, novalongi veefikola doSondaha, umwe ngeno meongalo keshe, novawiliki vovanyasha, umwe ngeno meongalo keshe.

Elalakaneno loshoongalele eshi ola li okumona ondjila ya yuka noya wapala okuhumifa komesho ofikola yoSondaha noshilonga mokati kovanyasha. Nokuli pehovelo opa ningwa otundimbibeli oyo tai pendulile ovanhu ehalo lokutwala ounona vavo kuJesus kofikola yoSondaha. Otundimbibeli oya li netumbulo eli: "Efeni ounona ve uye kwaame". Opo okwa shikula oshipopiwa osho tashi holola nawa kutya, ofikola yoSondaha omukangha wayo ou li nonale METESTAMENTILIKULU, omo Kalunga a lombwela oshiwana shaye shi honge ovana vasho okudiinina eendjovo daye. Oshilonga eshi osha kwatafana vali neudaneko lefukaleko olo la pewa oshiwana kuKalunga.

Opa ningwa nokuli oihopaeletwa mokulonga mofikola yoSondaha momahokololo nomokwiimba nomokulihonga omahokololo pakutala omafano omoMbimbeli. Oshipopiwa sha shikula ko otashi holola kutya, mofikola yoSondaha otamu longwa eshiivo lokushiiva shili Kalunga noMona noMhepo iYapuki, nohole oku mu hola netilo liyapuki oku mu tila, opo ounona va putukile metilokalunga la shili. Onghe ofikola yoSondaha oi noku-diinina momaumbo, opo ounona va tekulilwe moukriste.

Elalakaneno loshoongalele ola li opo, okuhumifa komesho ofikola yo-



Sondaha noshilonga shayo, onghe oshoongalele osha pangelwa kepulo eli: "Otai humifwa komesho ngahelipi?" Onghe opa fanekwa, pa kale ngeno ongudufilishisho yoshilonga mofikola yoSondaha. Nefaneko eli nali ye kePangelongerki, li li konakone noku li pameka. Hano mokangudu aka otamu kala ngeno ovanhu ovo va dja moitaingerki aishé ine moWambo noKavango, moshitaingerki keshe omunhu umwe ile vavali, osheshi otamu ka kala vali nomutumwa ile ova-tumwa. Ovo otava file oshisho osho tashi longwa mofikola yoSondaha ne-mhumbwe davo. Eengalo omolwoshilonga eshi otadi pumbuwa yo di humifwe komesho. Oshilonga shofikola yoSondaha osha nenepala unene momesho etu, ndele osha monika shi nondilo unene, onghe otashi diladilwa ngaha noshisho. Okwa popiwa shihapu okudiladila ounona noivilo yavo oyo tai va shili okuuya kofikola yoSondaha, shamha tuu tai ningwa nokulongikidwa nawa. Hano ofikola yoSondaha otai humifwa nawa komesho ngenge ovakulunhu veongalo tava file oshisho outeku wopakriste pamwe novadali aveshe. Ovakulunhuongalo ovo yo tava monene ofikola yoSondaha yeongalo ovalongi ngenge tava pumbu.

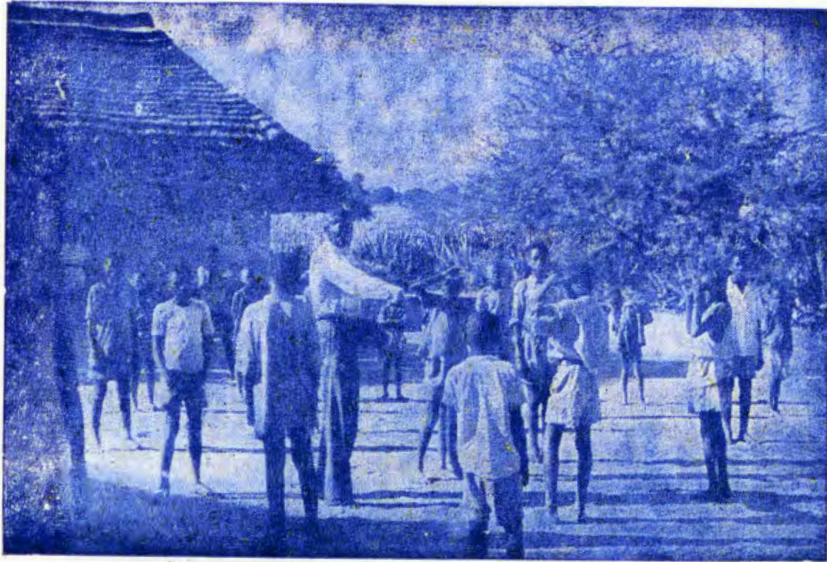
Ovakulunhu otava dulu okukala kumwe nounona vavo moivilo ngaaishi, oKrisimesa, oPasa, oMissioni. Omatalelafane po ounona meefikola otaa pumbuwa, omo ovakulunhu tava kala yo pamwe nounona vavo nokuhafa.

Ofikola yoSondaha oi noshilonga shinene shili mongerki, osheshi otai twike oshilonga sha Kalunga momitima dounona.

Konima opa kundafanwa oshilonga mokati kovanyasha. Opa kala epulo linene olo la pangela eenghundafana adishe: "Ohatu kwafa ngahelipi ovanyasha vetu?" Opa leshwa Mat. 6: 33; ITim. 4: 16; Luk. 11:46; Luk. 6: 39. Opa popiwa kutya, inatu kala oipelende oyo tai leshwa ashike tai ulike ondjila yokuya kehupifo, ndele-ne otu nokwenda pamwe novanyasha







Oyamati tava ulikilwa nawa meetundi doudano nokuli moiongalele yavo. --  
Mefano eli hatu va mono motundi yavo meNgela.

*Ku Jesus nda pewa elago lya pwa;  
Mongundu yuuyuni nda hogololwa,  
Ndi ithanwa ndi kale nda yapulilwa.  
Shilonga shi she, nde shi nyanyukilwa.*

*U kwathe ndj' ohole ya hwamekeka,  
Ndi yakule mboka taa lilagana,  
Ndi thet' omahodhi, ndi yambule po  
Omboka ya gundu noohepele wo.*

*OMbepo oNdjapuki kwatha ndje wo.  
Omwenyo ngu gwandje u hwameke po.  
Ndi kale he longele oMuwa ongu,  
Ha pe ndje oonkondo nohenda ya pwa.*

vetu okuya kehupifo. Ovanyasha ota-  
va tale unene oshihopaelelwa kova-  
kwatelikomesho shi dule okupwilikina  
eendjovo.

Konima ovaevangeliste vovanya-  
sha ova eta po ebandulo lavo nomau-  
djuu avo moshilonga shavo pamalufu  
avo. Ovanyasha ova diladilwa unene  
moshoongalele eshi, neenghendabala  
omolwoshilonga eshi oda ningwa, pa  
monike kutya, otashi ningwa ngahelipi.  
Luhapu opa popiwa wa oshilonga  
shetumo osho tashi pendulilwa yo ee-  
ngudu dovanyasha mokulonga oilo-  
nga yomake omolwoshilonga shetu-  
mo. Ovanyasha nava longe oshilonga  
shetumo, osheshi etumo olo omwenyo  
wongerki ya Kristus. Opa kundafa-  
nwa shihapu kombinga yoshilonga  
mokati kovanyasha. Omukumo mupe  
owa holoka mokudiladila oshilonga  
mokati kounona nomokati kovanya-  
sha.

Oshoongalele osha mona omanyama-  
mukulo komapulo aeshe konyala oo  
a holoka po. Omhepo ya Kalunga ou  
ta wilike ongerki, oye ta nyamukula  
omapulo aeshe omolwoshilonga mo-  
kati kounona nomovanyasha mongerki.

Ohatu hambelele oMwene Kalu-  
nga, eshi a pendula mongerki yetu  
oshisho shokutala ovanyasha nouno-  
na, osheshi ovo oshiwana shokomesho.  
Omukulu wonale okwa tile: "Uhe  
nomutanda ku nangobe, -uhe nomhao-  
na ku noilya, -uhe nounona ku no-  
vanhu". Onghe hano ounona nova-  
nyasha ovo emona loshiwana, ndele  
ovo emona longerki, onghe hano oku  
va filoshisho otaku eta shili elao ne-

## AALONGWA NKENE YA PITI MEKONAKONO 1963.

	ST. VI	
	Aamati	Aakadhona
eNgela	42	16
uUkwaluudhi	-	22
oNayena	11	-
oNgwediva	26	-
oShigambo	-	15

### OOSEMINARI

	Aalongi	aape	
oNgwediva			17
oNgandjera	--	--	13

### OSHIGAMBO

Junior Sertifikaat: Vorm III - 17 (ayehe ya pita)  
Vorm IV - 10



puniko la Kalunga koshiwana noko-  
ngerki aishe. Elao eli kali fi ashike  
elao lonena, ndelene olo elao lonena  
nolounyuni tau ya. OMwene na puni-  
ke ediladilo keshe la yuka omolwo-  
shilonga shaye mokati kounona nova-  
nyasha vetu. Edina loMwene nali fi-  
manekwe nena nofiyo alushe, koushi-  
lo fiyo okouningininio.

N. H. Shinana

*Enyanyu lyaavu moshipangelo sha Nakaya-  
le. Esiku 26. 10. 1963, aaSeminari yokoKa-  
hao oya ningi ohungi moNakayale. Oya i-  
mbi noya hokolola omahokololo omawana-  
wa. Esiku ndyoka egulu olya li lye tu e-  
gulukile. Kehe gumwe okwa mono Kalunga  
nkene ta longo mokati kaantu ye.*

Aavu ooitaali ya kolekwa, aashunimoni-  
ma naapaganj ya tameke okwitedhulula.  
Esiku ndiya itaye li dhimbwa. Otaa pula  
kutya, uunake taye ya ishewe.

Onke ano tandi mu indile one aakulu-  
ntu yooskola mu dhimbulukwe uuna mwa  
mona okathimbo, talelii po oonzi ndhoka  
dha lala miipangelo. Moku shi ninga ota-  
mu likolele Kalunga oomwenyo.

T. Shikongo.



# OSHIKOLOLO SHAAGUNDJUKA

## PETHIMBO NDIYAKA

Ondjila yokuya kuKaribib sigo koWambo oyo onde. Ongundu ndjoka ya li mondjila omasiku 33. Omatemba gayo ga li po gu udhilila iikulya niinima kutya, konyala aantu inaa gwana mo we, shila oofelani mboka yaali ya wapa okukuutumba metemba. Omusamane Hänninen ta ti: Otwa ende kolupadhi ondjila ayihe. Oongombe odhindji dha sile mondjila omolwomvulwe. Nosho wo uudhigu wi ili nowi ili twe u mono.

Outjo owo okalando ka hugunina mondjila yawo. Oyo ya kala omasiku gatatu paaNduitsi. Oya nyanyukwa, sho ya mono okunwa omeya omatoye nokulya iikulya iiwanawa. Omeya ga gwana, opo yi iyoge nokuli noya udhitha na go iiyuma yawo ayihe ya li metemba. Oyo ya fa ya tengeneke kutya, oya li ye nokwidhidhimikila uupyu nontsi iiwike iyaali mondjila noinaa mona ompito yokwiyoga nande pethimbo ndyoka. Nosho wo omeya gokunwa ngele ga monika momadhiya nenge miilambo, ga nyatekwa komakondo giyamakuti.

Omusamane Savola a li e nuumbanda molwondjila ondhuigu. Oye e shi shi kutya, ope na omaudhigu oge ndji, manga inaa thika koLukonda. Oye a li a pumbiwa shili mondjila, ihe a tegelelwa wo kegumbo. Oye oku uvite, kee nombili omolwiimpwiyu kegumbo. Onkee ano sho ya thiki koKaukwejo, oye okwe ya thigi po nokwa endebele komeho opo a thike ko tango koWambo.

Ota ka thika ko tuu kuyele? Nongini ye mwene ota vulu okuhumbata omaudhigu golwendo? Okakambe taka vulu tuu okukala nomwenyo pethimbo lyolwendo ndoka aluhe? Omapulo ga fa ngaka ga udhitha oomwenyo dhooyakwawo. Esiku limwe alike netata oye a li mondjila. Sho a thiki kegumbo, ayehe ya li po nawa. Kalunga na hambelwe!

Pokati koKaukwejo noNdonga opu na omadhiya goKahakana. Omusamane Glad okwe ga opaleka nomolwa sho omeya ga monika omahwepo nga. Oya dhipaga oomenye mbali nosho wo ongombe yimwe ndjoka ya nyengwa okutsikila komeho. Osho ayehe ya mono onyama ombwanawa. Momalundu sho mwa li omwidhi, aantu ya tokola okukala mpoka omasiku gata-



tu. Iiyamakuti yu ulu uusiku, ihe omvulwe ya tono ayehe nosho ya kotha nokukothelela.

Omasiku gatatu sho ga piti po, oya tameke okutsikila ondjila, yawo. Etemba lye ende nuudhigu mokati komano nomehekevi olindji. Omusamane Hänninen okwa thigi po ooyakwawo nokwa ka yaha opo a galukile mbala mongundu. Ihe ombadhilila oye okwa dhimbululula kutya, ta thikama mokuti nooyakwawo kaye po. Ine ya mona nando a kongo ethimbo sigo a tameke okudhiladhila: Miihwa omu na iiyamakuti niilikama yi ili noyi ili, otayi ka tuulagula ndje, nenge tandi ka sila mo ondjala nenta mokuti muka. Osho te ende note ende ootundi 6 opo etango tali ka ningina mo.

— Ihe omakola ngoka otaga lilile shike? — — — Ogo ge tu landula ondjila ayihe! — Osho a uka mpoka omakola ga kudhile nokwa dhimbululula eha moka ya lala uusiku wa yi. Nena a tameke okulandula oshinkoti shetemba. Sho kwa ende oomaila dhimwe, okwa adha ongundu ayihe. Okwe shi nyanyukilwa noonkondo, nando a vuluilwa.

Olwendo lwa tsikile owala. Oongombe dha vulwa shili. Nishewe mbali mudho dha si. Adhihe dha li pokugunda.

Ihe sho ye ende po natango, ombadhilila oya dhimbululula kokulekule omulonga, ngoka gwa tondoka pokati komalundu ga ziza nawa. Oskepa onene ya monika wo. Oongombe odhe shi dhimbululula wo, eha lyo o-

pala konima yombuga ya kukuta. Oongombe dha tameke okutondoka noonkondo, opo dhi uke komulonga. Aalumentu ya mono uudhigu sho ya kambadhala okukwatelela oongombe mondjila. — Ihe efano ndjoka lyo opala olyo efano shili, olya kana thilu. Ayehe ya li po ya mono omatandangole.

Ongundu ndjoka ya vulwa shili ye ende natango kashona na kashona, sigo ya vululukwa noya lala uusiku poNamupeke. Ihe eha ndyoka sho li li popepi noNdonga, oongombe dhe shi tseye nodhi iyaka po uusiku. Omusamane Hänninen okwa yi pamwe naahingi kolupadhi opo ya ka konge oongombe. Ooyakwawo ya thigala poNamupeke ye ya tegelela. Iihwepo nga okwenda ongula, ihe omutenya etango sho lya tsu, ii-huna ayike. Aasamane aaWambo oya yi okukonga oongombe, Hänninen awike a kambadhala okulandula oshinkoti nando omagulu inaga hala we oku mu fala komeho. Osho e ende ootundi nootundi. — Ongoye omuntu omushike — — okanima okashushu kowala kombanda yevi. Nando ongeyi, oMuwa ite mu dhimbwa, ongoka e mu ithanene mepya lye. Oye mwene te enditha nota koleke omboka ya vulua.

Taku tsikilwa





# OSHIKOLOLO SHEGUMBO



## UUPUKA U LI MOLUTU LWOMUNTU (Ooparasiete dhomeni)

Uupuka nenge ooparasiete odho uunamwenyo mboka hau paluthwa kiinamwenyo iikwawo. Inamwenyo mbyoka ohayi ithanwa "oomwene". Ooparasiete dha hepeke omwene noonkondo. Ooparasiete odha topolwa moongundu mbali: ooparasiete dhomeni nooparasiete dhokombanda. Otatu ka popya kashona kooparasiete dhomeni. Ooparasiete nenge uupuka wa tya ngaaka tau kala miilyo meni ngashika momandjandja. Uupuka tau kala momandjandja:

Taenia = omapuka omale = OONTEKU

Ascaris = uupuka

Ankylostoma = "uupuka"

Oxyuris = uupuka uushona uutokele

Amoeba = uupuka tau eta oshimela

Ooparasiete odhi noomwene yaali. Olwindji omwene gwotango oye oshinamwenyo nomwene omutiyaali oye omuntu. Ooparasiete otadhi zi momwene gwotango notadhi taandele komwene omutiyaali. Ooparasiete kehe otayi taandele pamukalo gwi ili. <sup>1</sup>/<sub>2</sub>liponga yuupuka tayi aadha aantu oyendji.

**OTU NOKUNINGA SHIKE UUPUKA (OOPARASIE) WAA TAANDELE MOKATI KETU?**

Otatu konakona omikalo dhawo dhokutaandela.

**TAENIA:** Oongombe nenge iingulu tayi nu omeya ga nyatekwa nonyata yi nomayi ga Taenia; omayi taga tameke okwenda sigo taga kala moontumba dhongombe nenge dhoshingulu. Omuntu ngele ta li onyama yi na Taenia, inayi pya nawa, ota kwatwa ku Taenia netaandelo lya tameke ishewe.

**INO NYATEKA ELUNDU!! INO NYATEKA OMEYA!! LONGITHA OKANDJUGO!! INO LYA ONYAMA OMBIHU!!**

**ASCARIS:** Uupuka mbuno u nomwene gumwe awike noye omuntu. Uupuka tau kala mela nenge momandjandja. Omayi taga kuthwa monyata. Omuntu ta kwatwa kuwo ngele ta nu omeya nenge ta li iiyimati ya nyatekwa kuwo.

**INO NYATEKA ELUNDU!! INO NYATEKA OMEYA!! LONGITHA OKANDYUGO!! YOGA NAWA IKAHA YOYE MANGA INO TAMEKA OKULYA!! FULUKITHA OMEYA!!**

**ANKYLOSTOMA:** Uupuka otatu kala monyata yomuntu ngoka te u aalukwa. Onyata ngele tayi nyatekelwa miihwa nenge pelundu nomuntu omukwawo ta ende oompadhi dhowala, uupuka tau hiti moshipa she. Otatu ende ishewe medhingoloko lyombinzi sigo momapunga nomomuligu gwombepo. Otatu londo ishewe mokana notatu ninwa noitatu yi mondjandjona. Omuntu ta nkundipala unene.

**INO NYATEKA OMEYA NENGE ELUNDU!!**

**OXYURIS:** Uupuka mbuka uushona uutokele tau aadha olwindji aanona. Otatu kala moshitopolwa sha hugunina shomundingo notatu holoka esiku limwe poshelo shenyu nopus noshinywe oshidhigu. Uupuka mbuno tau taandela noongwo niikaha nenge miikulya.

**DHINDHILIKA ANO:**

**UUYOGOKI. OKANDJUGO MEGUMBO KEHE TAKA KWATHA AANTU YAA KWATWE KUUPUKA WI ILI NOWI ILI.**



## ONGUDI YOUPAANI

Nekulu okwe mu ulikila oilanda nokwa hepaulula oshiningwanima. Shiimi okwa tala oilanda nokwa li e i shi omolwedidiliko oye mwene a hangika e li ninga nokwa tya: "Oilanda ei oya Nekulu. Onda i landa nodi inene. Efiku olo nde li dimbulukwa naa naa", —osho Shiimi a hovela okuhepaulula.

--Oilanda kai shi oyo yomwameme. Ove i landakanifa."

Ovakainhu aveshe va tonga no kuana kutya, oilanda oyo tuu oyo ove i hanga komwaina wa Namaria.

--"Omupiya ou woye mupe okwa hepaulululila nge nokuli kutya, oye e i vaka", —Namaria a tonga nokuulikila Kashinini.

--"Onaini?" —omwene weumbo ta pula nukufyouladi.

Efiku tuu olo we mu eta meumbo loye —osho ta ti —ndelene elaka nokuli ine li shiiva natango nande", —osho Nekulu ta fatula.

--"Oye okwe i lowa. Oye okwe i shitukifa eyoka ile okashima ile keshe shimwe nosho oilanda ya ninga yaye", —osho Namaria a ingida.

--"Fitika okanya koye, Lombwele nge, ngenge we i kufa", —Shiimi ta tongo nouladi.

--"Ahowe, inandi i kufa, inandi i kufa. Onda hala okuya kohamba ndi i shiivifile kutya, ohandi lundilwa ashike", —Namaria a popi nokuhanduka.

Nekulu okwa twala oilanda kuye nokumwena, okwa kufa etemo nokwa ya kepya. Omolwashike Shiimi okwa kufa oilanda? Nekulu, oye omunya-lombe, onghe oshinima eshi she mu ningifa omwenyo muwi. Oku na mbela okakadona kapeile oilanda te i pe mbela Namaria, opo a mone ombili kuye, eshi a dengwa kuShiimi. Efiku limwe Shiimi ta ka mona oupyakadi omolwashi a denga Namaria, osheshi oye omona womwayina wa-Nangombe womouhamba. Nena ota ka pa nge oushima nota ti, kutya oupyakadi ou aushe wa holoka molwange nota ka alulila nge pamwe ouwi wa sha. Itai pumbwa okutula ndi ka dengwe ngeno, ndelene otashi dulika, Shiimi ta kala nomakoto a monofe nge oshiponga. Shiimi ondi mu shi, ndi nokutula sha shii kombinga yaye. Omukulukadi omutine ita dulu oku mu eta natango meumbo laye, shashi ta tila ovo tave mu file efupa.



Oilanda te ke i twala peni? Ohai ke shi shiiva natango,—osho Nekulu a diladila fimbo ta longo mepya.

Pehulilo lokufu omeva a pumba neenghono novanhu va mona oudju uhapu omolwasho. Oimuna ya li i nokutwalwa meefuka di li kokule noshilonga. Omifima da wapekwa noda hupwa. Omeva oo manini a didila mo oufiku, ovanhu va li ve noku a longifa neendunge a ha hepifwe nande nande.

Omeva nande na kale mahapu nokuli, itaa longifwa unene. Oikutu kaya li po noinai pumbwa kukoshwa, nokakwa li ku na ou a kwatwa kediladilo olo e likoshe ngeno. Ovanhu va tala kutya, omeva e li po ashike okunwa nokutelekifa, ha okulikoshela. Ngenge omake a kaka nai, opwa kufwa ashike eheke novanhu tave lifeta na lo.

Olutu alishe la vaekwa luhapu nolukula nongenge peenhele dimwe pwa kala omaadi mahapu unene, oo a kufwa ko nokati.

Mokuhwila eengobe pwa pumbiwa omeva mahapu, ndelene paife oimuna ya li kokule komifima domeefuka nomeva a pumbiwa ashike noku-nwa nokuteleka oikulya.

Ovanhu vomomaumbo va kelela noudinini omifima davo, opo omeva oo omanini a didila mo a ha vakwe mo kovashiinda ile kovanhu dile kokule.

Efiku limwe ongula inene Namaria okwa mona eemhadi da enda popepilela nomufima waShiimi. Momufima omu ongula keshe nonguloshi keshe mwa monika ashike omeva e yadi oshitoo shimwe. Namaria o-

kwa konakona eemhadi, okwe di yeleka nokulyata mo neemhadi daye mwene. Heeno shili, eemhadi odo o-domukulukadi womushiinda, oda Kuna, omulumenhu waye oye omufita waShiimi. Oye a ile komufima nokwa vaka mo omeva. Namaria okwa ende nokushikula eemhadi, fiyo poshivelo shomushiinda, okwa punguluka nokwa shuna, ina tonga sha, nande a mona ovanhu vomeumbo va li pondje. Ovo va hovela okutula omolwetalelopo li li ngaha, osheshi onghe di nokuli oya li kutya, ovanhu ve nokupopifwa, ngenge omunhu ta ende ombili. Namaria okwa hala shike mbela? Okwe uya okulowa mbela poshivelo sheumbo moipafi yovanhu? Omukulukadi Kuna ina mona ombili, fimbo ina ya kuNamaria e mu pule yemwene oshinima osho. Namaria okwe mu pa oushima kutya, oye omulunga, a vaka omeva, ndelene Kuna ina dimina nande nande. Okwa ti a pitilila ashike pomufima, osheshi a li a hala okuyukilila, ndelene, ina tala nokuli komeva. "Oshilishili",—Kuna a ana. Ndelene Namaria ina efa oku mu pa etimba, fiyo Nekulu okwe litula meendjovo davo.

Taku twikilwa.





# OUNYUNI OTAU TONGO SHIKE

## OVAKOLOKOSHI TAVA LONGO OIHUNA MUKONGO.

OmuKongo mu nehangano limwe lovanyasha noinhimbu yalo ya hove-la okuhanauna eengulu detumo. Mu-Leopoldville (oshilando shepangelo) mwa dja elaka tali ti kutya, eengulu detumo di fike po 15 da hanaunwa, ovanhu va dipawa noiniwe ya kufwa. Ovanhu va pula ekwafo kepangelo lomuKongo nosho yo koiwana ya hangana. Ovahongi ovaamerika va indila, pu tumwe eedila, opo ovatilyane va hupifwe. Omuwiliki wovakolokoshi a kala mofikola muKiina, omo a putukilwa oilonga i li ngaha. Oshilongo sha Kiina tashi pangelwa kovakomuniste, ovo tava kondjifa oukriste.

## OMUUDIFI A FIMANA, E. STANLY JONES, A WANIFA EEDULA 80.

Oye omuhongi omuAmerika, a longa oshilonga shetumo muIndia da koya 50. Natango ta ende moilongo ilili noilili no ta ningi oiongalele yepapuduko. NomuSoomi a enda ko lutatu.

## EEMBIMBELI DA TUMWA KUESIPANIA.

Omoshilongo sha Espania ongerki yopakatoli i neenghono novaitaveli yomongerki onghwaevangeli yopaLuther ova monifwa oihuna. Ovo inava pitikilwa nova kale ve neembimbeli davo. Pamha oshinima sha hove-la okulunduluka. Ombimbelihangano yomuLondoni oya mona epitikilo okutuma kuEspania eembimbeli di fike 2000 nomaTestamenti maPe e fike po 4000. Ovo va hala okulikongela ombimbeli vahapu. Omambo aeshe a landwa diva.

## OMUPAPA, OMUKULUNHU WONGERKI YOMUROMA, OKWA ILE KEDU LA PALESTINA.

Ongaashi ovaitaveli vahapu hava i kuPalestina va talele po eenhele odo diyapuki oko Jesus a kala, osho yo omupapa, edina laye Paulus, okwa ile pehovelu lomudo ou. Unene a hala okuya ko a ilikanene ko ombili yomounyuni, Kalunga a kandule po oshiponga shoita. (Tala oshifo sha tekela.)



*Omiti dha tya ngaaka dhi li mwEuropa. Pethimbo lyuuialala tadhi kanitha iifo yadho.*

## OKATONGO KAREPUBLIKA.

Den Haag.—Republika okwa tumailudikifa yaye yokwanya emanguluko la Suidwes kombelewa younyuni (yeemhangu) muDen Haag muHollanda.

Oiludikifa ei oya yadifa omapandja ahenhe (9) noi li po omatomhelo 150.

Pefimbo olo tuu olo ku New York (N.V.O), omongudu i li ko, oyo tai konakona oshihokwe shokatongo oko, okwa dja elaka, la tumwa kombelewa oyo tuu oyo kutya, navo yo itava kofa mokukonakona oukakombonoludi wa Republika, osheshi inave u hala.

Liberië na Ethiopië otava kondjifa yo oukakombonoludi wa Republika kuSuidwes. Otava fatula kutya, eshi itashi ka humifa Suidwes komesho nosha kambakana yo neufu la Mandaat. Ombelewa ya Den Haag oya itavela va tume omatomhelo avo koshinima eshi ku Den Haag.

Ombelewa ei oya tokola i ufe po sha moshinima eshi shopokati ka Suidwes na Republika komesho yomoudwali.

## KONHUNHU YA FORMOSA EDU LA KAKAMA.

Ovanhu va koya 100 va fya moshiponga, edu eshi la kakama konhunu ya Formosa. Ovatumwa ovasoomi oko ve li yo, ndele aveshe ve li nawa.

## OMAANO OMUBISHOFI MEFIKU LOKUDALWA KWAYE.

Ongaashi ovaleshi voMukwetu tava shiiva nokuli, omubishofi E. Gulin a wanifa eedula 70 muSoomi efiku 29 la Desemba. Omubishofi Gulin e na ookume vahapu nokwa shiiva kutya, ovo tave ke mu dimbulukwa efiku olo noku mu tumina omaano elili nokulili. Omubishofi ina hala okutambula omaano, ndelene a ufa kutya, ookaume vaye nava tule oimaliwa (ponhele yomaano) moshikefa, noimaliwa oyo tai ka monika ngaha, tai ka yakula oshinima shimwe shi holike komubishofi komesho oinima ikwao. Oshinima osho tuu eshi, OVAFITA OVAWAMBO NOVAKAVANGO VAMONE OMHITO OKU KA TWIKILA OKULILONGA KWAVO MEEFIKOLA DOKOMBADA muSOOMI ile muSUID-AFRIKA. Ovanhu ve fike po 1500 va tula oimaliwa moshikefa sha totwa ngaha komubishofi Gulin nomo mwa dya oimaliwa ihapu. Oshinima eshi tashi holola ohole yaye inene yokuhola oshilonga shetumo.

## OMUTUMWA OMUSOOMI A HGOLOLWA OMUKULUNHU WONGERKI YOVALAULE.

Ovakulunhu vongerki onghwaevangeli yopaLuther yomuSuid-Tanganyika va ongala moshiongingerki shavo no va hoolola omutumwa omusoomi Henrik Smedjebacka a ninge omuwiliki (omupresident) wongerkiyavo. Eshi sha ningwa nokuli momudo wa ya.





# AALESHI TAA NYOLA

*Stephen H. Shimbode*, Ondibo, ota pandula unene, eshi a mona alushe oshifo shoMukwetu, tashi mu hafifa: "Otwa kala hatu lesheni oshifo shoMukwetu, ngashi nde shi hovela 1938 nosha kala sha hafifa nge unenenene." Ef.6:1-19.

*I. K. Ananias*, Oranjemund, ta ti: Ovamwameme ovaholike, ohai mu kundu neendjovo doMwene Jesus Kristus, keshe apa tu li, tu dimbulukwe kutya, ofye otwa kulilwa. Kalunga e tu udanekela omwenyo waalushe, nomwenyo waalushe owa kala moMona, ndele ou ehe na oMona wa Kalunga, oye ke nomwenyo. Fye tu kale tu na ouyuuki waye nokuhala Kalunga mounyuni ou wopaife, manga twa teelega ewanifo lelao laye. Tu mu pitike, e tu koshe tu ninge oshiwana shaye mwene. --- Omuuv. 11:9-10.

*Filemon Kashima*, Tsumeb, ote tu shangele oshiponga shinya sha ningwa pokati koNamutoni na Tsumeb. Oihauto ivali oya dengafana novanhu vane va fya. Onghe hano omushangi ta ti: Onda hala, ondjovo oyo i hange kukeshe ha shingi oshihauto nge okambakumbaku nge okatukutuku nge ombashikela, oyo a shinge nokukotoka nawa. Oiponga i li po apeshe. Navali itatu dulu okulinekelala eenghono detu, otadi pu po diva nokatu po.

*Frans Shaillemo*, Gobabis, ota kundu ovaleshi aveshe neendjovo da dja muTess. 1:2-4.

*Nd. P. Manja*, Swakopmund, ota shanga ngaha: Ohandi hambelele Kalunga, eshi nda mona onghenda inene okukala mongudumbibeli eedula 10 pamwe novamati ovamwameme. Ovo va diinina shili okwongala peendjovo da Kalunga. Na ame yo onda mona omhito okukala mokati kavu. OMwene ne mu pe eenghono dholutu nomwenyo mu twikile oshilonga eshi momudo 1964. Joh.17:20-24.

*J. Kandjinga*, Paulinum, Otjimbingwe, ota pandula okamwainagona nkoka, ke mu tumine iimaliwa omagano, oyo a wape okutsikila oskola ye. Omukwathi ngoka e nomwenyo omuwanawa, oye Leopold Nii-gambo. "Kalunga ne ku yambeke molwoshilongayakulo we shi ningile ndje."

*Samuel Shitumba*, Tsumeb, ota hambelele Kalunga, oshoka oha koleke aluhe e-gongalo lye kombanda yevi, ngashi aamati oyendji oya shashwa noya kolekwa mu-Tsumeb.

*A. Haindobo Sakaria*, Windhoek, ota shanga: Ovamwatate muKristus efimbo eli tu li na, olihupi, onghe hano natu hangike, twa itavela oMwene wetu, osheshi efiku tuu olo tali uya ngoluvadi. Tala Fil.3:12-16.

*Jesaja Nuukunde*, oNtananga, ote tu kundu noohapu dhi li mu2Kor.13:11-13.

*Sakeus Pinehas*, Otavi, ota kundu aaleshi yoMukwetu Kol.1:3-29.

Fumvikeneni aasi yeni meitaalo lya Jesus, ya kale ye nomwenyo muYe. Joh.11:25-27.

Meme Helena Nahenda okwa mana oondjenda dhe 8.1.64.

Oye okwa li e hole oohapu dha Kalunga nokwa kumagidha aantu muKalunga. Okwa li e tonde uunganga woshipagani nokwa yakula nawa aayenda megumbo lya-wo. Megumbo a pukulula oluvalo lwe noohapu dha Kalunga, nando ha aluhe ya vullika. Okwa pukulula nokuguna aakriste ooyakwawo mondjila yomegulu. 2Kor.4:13-18; 2Kor.5:1-8.

*Vilho Gabriel Haikali*, Swakopmund, ota shanga ngaha: Mat.6:33-34. Epandulo olinene shili omolwefilonghenda la Kalunga, osheshi mefiku eti-22 muSeptemba e tu tumina ovanafikola vokoNgwediva, ovo ve tu hokololele omahokololo mawa nomaimbilo e tu hafifa. Ohatu mu pandula, ovakwetu.

*Filemon Andreas*, eNgela, ota ti: Ohandi pandula unene molwoshongalele twe shi ningilwa meNgela, osho shovalumenhu. O-twa yakulwa neendjovo da Kalunga komufita Paulus Andreas nokovaevangeliste Timoteus Muafufja na Paulus Hamukwaja. Omukwetu, dja mo moukolwe u talele Jesus.

*Jakob M. Shatipamba*, Usakos, ota hepaulula efyo lombadiliia lomukwawo muUsakos nde ta ti: Otwe lilongekida tuu molwefiku letu lokudja mounyuni omu? Eps.90:1-17.

## E I N D I L O

**One mboka hamu nyolele oMukwetu nenge oStora yomambo, yololeni nawa iinima mbika iyaali.**

**Ngele wa hala omambo, nyola kombanda yekutu ngeyi:**

**Ostora yomambo,  
oNiipa.**

**Ngele wa hala iifo, nyola ngeyi:**

**O mukwetu,  
oNiipa.**

**Ino tula mumwe iinima mbika iyaali! Otatu nyengwa okutseya, o muntu a hala shike ngele metumbulo limwe nokuli ta popi omambo niifo Noshu ta vulu okunyola ombirive ondeendeka nota vundakanitha iinima mbika iyaali kumwe sigo itatu tseya, a hala shike. Otatu mana po ethimbo lyetu ngaka okukonakona oombirive, na ne mboka mwa pula eyakulo, itamu li mono nokuli, oshoka twa nyengwa okuuva shoka mwa hala.**

**Onkee ano: nyola oshinima shoye pafupi, ihe netumbulo lya yela!**

**Ngele to tumu iimaliwa, tu tseyithila wo nawa, oshike to futu. Olwindji otatu pewa iimaliwa yowala, mombapila kamu na nando oshitya shimwe, iimaliwa ya hala shike. Onkee ano, ino kumwa, ngele ito pewa shoka we shi dhiladhila, oshoka ino shi tu lombwela.**

**Nishewe ngele to futu iifo, tu tseyithila wo, ngele we yi mbestela nale noto futu ashike nenge oto mbestela ngaaka nokufuta wo.**

**Ngele tatu dhiginine, iinima yi kale ya yela, nena enyanyu lyeni nolyetu wo.**

**Nomakundo gombili  
Ostora yomambo,  
Omukwetu.**

## NATANGO EFINDANO

Ovahongwa 17 va pita ekonakono la Juniolo 1963 moSekundorskola moShigambo. Olutivali ekonakono la tya ngaha (Juniorsertifikaateksamen van die Departement van Bantoe - Onderwys te Pretoria) la nyolwa moskola yokoWambo. Ongudu ei oya pita aishe. Ovahongwa 9 waavo va pita ngaha, otava twikile vali moShigambo, va hange oMatrika yovene 1965. Va 6 ovamati noukadona 3.

Ovahongwa 10 voSekundorskola yokoShigambo ova pita Hoër Afrikaanse Taaleksamen 1963.

Neudo otu nehafo, omolwovahongwa vopondje (eksterne studente) a-va va nyolele yo ekonakono olo tuu olo la Juniolo 1963.

Eshi otashi holola, kutya oWambo oya pila ehenokomesho pamha. Omukata oye ngo ta fyaala.

**FINSE SENDINGDRUKKERY  
OVAMBOLAND  
ONIIPA**