

OMUKWETU



No 8

AUGUSTE

1963



nyumba -
egumba
cumba

siku - esiku - epikwa
OOITAALI ITAA KALA PANYAMA.

nyumba -
ngumba
ngobe
0 = is

Rom.8:12-17.

Mpaka Paulus okwa hala oku-
popitha ooitaali nohole onene noku
ya ithana aamwayina note ya dhi-
mbulutha olwendo lwawo, oyo kaye
shi aanangunga yokupunduka, ya
gwanithe uuhalu we. Uulunde itau ya
pangele. Rom.6:14. Oshoka omukris-
te ngele ta longo uulunde, oti iyolo-
la muKristus noti itula meso lya alu-
he. Tu dhipageni omadhiladhilo gonya-
ma. OMbepo ote tu pe oonkondo oku-
tonda uulunde. Ote tu pe wo uuladhi
okulalakanena uuyuuki. Ote tu pe o-
madhiladhilo gopaKalunga. Ote tu
pe ehalo oku ga tsakanitha. Ote tu
zaleke oonkondo mekondjo lyetu. O-
ye ta kwatha ooitaati, ta dhipaga mu-
tse iilonga yonyama, te tu dhimbulu-
tha uuwinayi, ootaali opo ya angale
uulunde, ya dhipage iilyo yopavi.
Kol.3:5.

OMbepo oNdjapuki oha kala
mooitaali. Ote ya enditha ngashi o-
munona ta kwatwa komaako a ende.
Ota wilike olwendo lwootaali. Ite

tu tula muumbanda. Oye oMbepo yo-
hole. Gal.5:18. Ano ngoka a ningi o-
muna gwaKalunga, oku hole Kalu-
nga nohe endithwa koMbepo oNdja-
puki. Ota hwameke momwenyo gwooi-
taali nota gandja omukumo okuhola
Kalunga. Otse ohatu tila okuitala, o-
tse aana yaKalunga, oshoka mutse o-
mu na uunkundi nuuwinayi tau ti-
ndile mo. Ihe ooitaali otaa kolekwa
koMbepo yaKalunga, sho taa inekele,
oyo aana yaKalunga. Paulus ta ti:
oMbepo ota hokololelathana nombepo
yetu. Joh.1:12. Tashi ti: ombepo
yetu nge hatu ithana Kalunga Tate.
Mark.14:26, oMbepo ta zimine ta ti:
Eeno, ngoye omuwandje shili omu-
nelago.

Ngoka ta endithwa koMbepo, i-
ha longo uulunde, oku hole Kalunga.
2Tim.1:7. Ano ota hokolola uualwa
nokwitaala, ngele tu li ngeyi otse aa-
na yaKalunga. 1Joh.4:18.

Omuwana oha thigulula iinima
yahe. Otse aana yaKalunga. Otatu

mono uuyamba wa Tate Kalunga.
Ano tu dhimbulukweni kutya, otu na
Tate, iha si. Ihe etumbulo okuthigu-
lula otali ndhindilike nkene tatu ka
likola; Nokundhindhiliika uuyamba
waana yaKalunga, Kristus ta thigu-
lula egulu nevi, otse otatu likola pa-
mwe naYe. Gal.4:7. Olye ta vulu o-
kudhimbulula uuyamba waana yaKa-
lunga. Fil.1:29. Uuyamba tatu u mo-
no molweso lyaKristus, nando otu
na uudhigu muuyuni, omahongololo,
omahepeho, uunkundi, omathiminiko.
Oyaakwetu, tu idhidhimikeni okuko-
ndjitha uulunde. 2Tim.2:11-12. Tu i-
dhidhimikeni ano muudhigu mbuka
tu ka adhimithwe pamwe noMukuli-
li, oshoka oYe okwa sindana moma-
hindo agehe, nokwa adhimithwa muu-
yelele. 1Petr.4:13. Osho na tse wo o-
tatu ka ninga twe mu fa. 1Joh.3:2.
Tu sindaneni tu ka thigululeni pa-
mwe naJesus. Ehol.21:7.

Naftali Amadhila.



Auguste 1963

OSHOONGALELE OSHITIVALI SHOVANYASHA VONGERKI

“Ila u tale, inda u ka hepaulule.” Oshilonga shimwe sha fimana shongerki osho okutekula ovanyasha, nokulonga oshilonga shEtumo. Oshoongalele shouteku wovanyasha netumo otashi ka ongala meNgela eti 29 Auguste fiyo 1 Septemba 1963.

Oshoongalele eshi oshitivali shovanyasha vongerki aishe otashi teelele ovanyasha va ongale nawa moshivilo shavo. Eongalo keshe nali tume ovanyasha omulongo ile ve dule ovo. Ovatumwa ava otava ka kala omatwi nomesho ovanyasha neongalo lavo. Otave uya okutala vo va shune va ka hepaulule.

ONgerki yetu pa Luther oyo ongerki yombibeli ya pandjwa. Oyo vali ongerki yomailikano. Ovanyasha vayo yo otava ifanwa ve uye komafiku oo avo omo tamu ka kala ombibeli ya pandjwa nomailikano, nomailikaneno. Momishangwa diyapuki nosho yo momailikano ovanyasha tava mono Kristus mwene ndele tava shuna va ka hepaulule ngashi va mona-

Oshoongalele eshi otashi lalakanene EVANGELI li fike momitima dovanyasha. Osho yo eendjovo da Tate Kalunga di hwameke aveshe, opo va ninge ovatandavelifi velaka linyenye. Otaku ilikanenwa yo ovapaani, novaliteeki, va ye kuKristus. Ovaitaveli ovanyasha tava kolekafana, notava kolekwa yo meitavelo lavo. Opo ovanyasha vongerki va kale eedombwedi domwene wavo Kristus mefimbo eli lidjuu la huuninwa. Moshooongalele ovanyasha tava kala va mwena peeMbibeli da pandjwa nopomailikano. Opo EVANGELI tali longo meholeko nde tali findi, notali likola eemwenyo dovanyasha. Ovanyasha va mone Jesus mwene vo va shune va ka hepaulule ovashimba, ovahimba, ovakwanghala, nongerki aishe osho ve shi mona. Moshooongalele eendjovo da Kalunga

PENDUKA U KALE OUPAFI U HUPIFWE.

Joh. 4: 5-26.

Ovajuda novasamaria, ova kala ihava endafana. Ovasamaria ovo ovanhu voshidila shoupaani nokutya, ovo oludalo lovapaanisrael. Onghe ne ovajuda ve va tonda. Onghe omwalikadi a kumwa unene shili, Jesus eshi te mu indile omeva a nwe. - Ovaisrael okwa li va diinina Kalunga neeramata da Moses. Ndelene oupaani wa kala uhapu mokati kavo. Onghe ne ovajuda ve va tonda. Ovajuda esi va dja moupika wa Babeli, ovaisrael ove uya okutunga otembeli pamwe na vo, nde ovajuda tave shi anye, Luk. 9:5-9, 51-53.

Ovaisrael vahapu otava fimaneke Kalunga, ndelene ouhapu woupaani ou li mokati kavo natango, kokutya: u li meemwenyo davo. Jesus okwa ninga endafano lipe novasamaria. Okwa teya po etondafano. Ojuda nouisrael e u teya po, Efes. 2:14-16; Joh. 10: 16.

Mokati kovaitaveli mu na yo oupaani uhapu woukwadimo, oufukenuh woikulya moivilo papaani noikoluifa n. sh. t.

JESUS OIKE A HALA MOMWALIKADI?

Jesus okwa hala momwalikadi mu penduke momwenyo waye ondjuulufi. Onghe ta ti: “Ohandi ku pe o-

tadi minikile omitima, ovanyasha tava ningi ovatumwa novayandji vava koshilonga sha Tate Kalunga sha fimana, ETUMO. Ovanyasha tava ka kala kwinya nokumwena, tava pwilikine, vo va nyamukule epulo eti: “Olye handi mu tumu?” Osho yo ovanyasha va ninge ovayakuli vava vongerki momaongalo ayo, ovo tava yakula kehalo liwa.

Ovo hava ilikanene oinakuwanifwa vongerki. OMwene ne va pe ouladi momailikano. Omolwomailikaneno avo yo ouyelele wEvangelino hole yEtumo otai twikile momapipi aeshe.

Ovanyasha amushe, Jesus ta ti: “Ila u tale!” ndele: “Inda u ka hepaulule.”

Ila u tale!

Kl. Dumeni

meva omanamwenyo.” Jesus ota tongo omeva kokutya, omhepo iyapuki, Joh. 6: 38. Omwalikadi ke udite ko mhanga, oku shii Jesus ota tongo omeva omomufima. Onghe ta indile omeva aa, a shitwa, mov. 10 - 15; Joh. 6: 25-27; Jes. 55: 1.

Jesus alushe ota kundafana na ve, momaudifo, mongerki, moandaha, momakumaido ovatumwa ava, ve ku tuminwa oku ku pukulula, meindilo loye mwene nomeendjovo da Kalunga. Okwa hala move mu penduke ondjuulufi yoshili. Hano, ove ou li po ngahelipi?

JESUS OKWA HALA VALI SHIKE MUYE?

Okwa hala vali momwalikadi mu penduke omaudito omatimba aye. Onghe ta ti: “Inda u ka ifane omulumenhu uoye; ove wa li u na ovalumenhu vatano, ove owa tonga sha yuka, osheshi na u u kwete ke fiwoye, ov. 16-18.

Nonena Jesus okwa hala mu ove yo mu uye omaudito omatimba oye. Opo ove u mu hepaululile, opo ye e ku dimine po, nde to ningi omunelao shili. Eps. 32: 1,2,5. Omunhu manga ehe wete oushima momwenyo waye mwene, Jesus ota nyengwa oku mu hupifa. Judas novajuda vahapu, ovafalishai novanongo vomikanda, Jesus okwa nyengwa oku va hupifa shili. Onghe ta ti: “Onye tamu ka fila momatimba eni.” Joh. 8: 21, 24.

OKULIDIMBULUKWA.

Omwalikadi okwa dimbulukwa Jesus oye omutumwa wa Kalunga. Onghe te mu lombwele eemhata, odo da kala pokati kovajuda novaisrael. Okwindila kuJerusalem nokondudu Karisimi, oko kwa li, va tungila nale otembeli yavo, nande ya ngumaunua po nale kuJohannes Hilkanus, onghe va diinina okwindila kondudu tuu oyo. Jesus ota ti: “Oinima ei aishe, Jerusalem nondudu ei, kai na vali oshilonga. Eitavelo alike li noshilonga. Ava va shitululwa komhepo iyapuki, ndele va ninga ovana va Kalunga, itava indile vali keenhele edi donghedi yomaikililo, itava indile vali keenhele edi domaikililo, ngashi vahapu tava ningi nonena eli.

Ove owa dimbulukwa sha tuu? Ou ta dimbulukwa omukulili, oye te mu jeululile omwenyo waye aushe shili, Joh. 8: 31-32.

Paulus Nailenge

Oshipopiwa shomubisofi E. G. Gulin, oshu uvithwa melangeko lyomubisofi Leonard Auala 30. 6. 1963.

Omubisofi Gulin a popi omatumbulo gamwe moshiNdonga petameko nopehulilo lyoshipopiwa she. Oohapu dhe dhomoshiNdonga odha nyanyangidhwa noondanda dha kola.

TSE IHATU IUVITHA OTSE YENE

Aakwetu aaholike!

Ongerki yoWambokavango tayi nyanyukwa notayi hambelele Kalunga onena. Ihe hayo ayike. Ongerki yomoSoomi tayi nyanyukwa notayi hambelele wo. Noshu aakriste ayehe otaa hangana mpaka na tse. Oshoka sha mpoka omubisofi ta langekwa moshilonga she, ngele muRoma nenge moNiipa, oye ta ningi omubisofi gwongerki ya Kristus ayihe wo. Aantu aakriste muuyuni auhe ye tu kundukidha mpaka pambepo.

Jesus Kristus okwa li kee shi omuWambo nenge omuKavango nenge omuSoomi. Oye gumwe gwomaIsrael, gwomoshigwana sha hogololwa. Otse otwa tsikwa atuheni pamukalo tuu gumwe mokati kiitayi yolumono olwanawa, Kristus, nekota lyolumono li li moshigwana sheTestamenti eKulu. Osho shika tashi uvithwa kondhimbo yomubisofi, ya longekidhwa kiikaha iiyapuki, oyo yomomuti gwolumono lwa Palestina. Ongerki yomoWambokavango oyo omuwana gwongongo lyotango lyomuJerusalem, ngashi ongerki yomuSoomi wo. Kape na ngoka gwa Kristus e vule omukwawo. Otseni atuheni tu thike pamwe puye, tu kale aantu yomwAfrika nenge yomwEuropa, oshoka shaa mpoka yaali nenge yatatu taa gongala medhina lye, oYe mwene omo e li mokati ketu. "Nomeudho lye otseni atuheni twa pewa mo, nesilohenda lya gwe-dhele kesilohenda."

Omuwameme omuholike Leonard! Mesiku ndika enene lyoshituthi shoye omwenyo gwoye tagu kakama moku-tamba oshilonga shika oshinene. Oto pumbwa ngashingeyi ohapu tayi ku tsu omukumo notayi ku wilike yomohapu dhika tadhika kala nokukalelela pethimbo ndyoka wo, uuna egulu nevi otali ka kana. Ohapu ondjika: "Oshoka ihatu iuvitha otse yene, awe, oKristus Jesus oYe oMuwa, notse aayakuli yeni omolwa Jesus." (2 Kor. 4: 5).

1. "Ihatu iuvitha otse yene." Omboka haa iuvitha, otatu ya mono



Omubisofi Leonard Auala ota langekwa moshilonga she. Koshigalikaneno (okuza kombinga yokolumoho) oyo mbaka: Asitagongalo V. Teinila, Sakeus Iihuhwa, A. Hukka, omubisofi E. G. Gulin, Ds. Nieuwoudt, inspektor S. Groth nomusitagongalo Ismael Nhinda.

nga. Aanankondo yomuuyuni mbuka oya hokwa okuhokolola iilonga yawo noye yi inenepekithile. Otashi vulikanga, oku naauvithi nokuli, haa eta puuyelele omagano gawo nohaa tuwalala nkene ya humu nawa komeho mondjila yuuyuki. Ohaa ikongele esimano lyawo yene.

Oshika kashi shi ondjila yoye. Ongoye ito langekwa moshilonga shika opo u iuvithe ongoye mwene. Ongoye omulongwa gwowala, nuulenga woye kau li mungoye mwene, ihe omoMulongi gwoye. Emanguluko li thike peni mushoka! Ongoye mwene oto vulu okukala, ku noondunge, ku noonkondo. Oto vulu okukala omuntu omunandjo ngoka a silwa ohenda. Ongoye omuhokololi ngoka ita pumbwa okutunga ye mwene ehokololo lye.

2. "Otse ohatu uvitha Jesus Kristus." MuYe omu na shoka sha gwana okuuvithwa. Aluhe iitya yaalongwa yotango ya tsa: "Otwa tala eadhimo lye, eadhimo tuu ndyoka lyePona lya He, oye okwa li ku udha esilohenda noshili." Eadhimo lye enenenene itali ka dhima. Kashi shi oshikumitha, ngele aalanduli ye yotango ye muithana "oMuwa gwoMwenyo." Ye

ine ya muuyuni opo e u pangule, ihe uuyuni u hupe omolwe. OYe ite ekelehi nando gumwe te ya kuYe. OYe kee nomuvu nando gumwe kee netegameno andola. "Oye ta taamba aalunde eta li pamwe na yo." Ayihe ote yi shi tulula iipe.

Omunelago ngoye, u nelaka ndika. Kape na ngoka ta vulu okutinda elaka lyoye, oshoka oyo tuu ndika, Jesus Kristus oYe oMuwa. OYe oMuwa, oshoka oYe awike okwa ulukile, Kalunga okwa dhiladhila okukalamwenyo kwetu okwa tya ngiini. Ngele katu mu na, katu negumbo. OYe ta gandja koomwenyo dhetu egumbo. Ngele katu mu na, otse twa nyata. OYe te tu yogo. Ngele katu mu na, otse aankundi. OYe ta gandja kutse oonkondo.

Elaka ndika moku li uvitha oto mono, Kalunga nkene ta vulu okuguma omwenyo gwomuntu kehe. Notaku ya esiku, uuna ayehe taa tsoongolo koshipala she nelaka keke tali hempulula, oye oMuwa. Ongoye omunelago, shoka to vulu okuendelelitha esiku ndyoka.

3. "Otse aayakuli yeni omolwa Jesus." Osho Paulus ta popi, oshoka oye omulongwa gwa Jesus. Kape na

ngoka a ulukile uunene weyakulo ngashi Jesus e shi ningi. Omolwa sho oye a lengwa oMuwa nokwa lukwa nedhina li vule omadhina agehe, shoka oye a li okwi ifupipike nokwa zala olupe lwomupika nokwa vulika sigo okusa, eeno sigo okusa kwomusigakano.

Uunene tuu mbuka owo uunene umwe auke nokutse wo, tse mboka tatu landula Jesus ngashingeyi. Omuyapostoli Paulus ta kondjitha ethiminiko miinima yeitaalo. "Hakutya, otse twa hala okupangela eitaalo lyeni, awe, otatu mu yakulile enyanyu lyeni." Oonkondo dhetu kadhi li mpangelo, ihe mekwatho nomeyakulo. Ongomuyakuli gwaantu omolwa Jesus oto vulu oku ya yakulila enyanyu lyawo, opo ya pewe edhimopo lyoondjo esiku kehe noya kale aana ya Kalunga, omboka yu uvanekelwa egumbo lya aluhe megulu.

Ihe oshilonga shika oto vulu oku shi gwanitha owala, ngele to kala omukwathi gwaantu, omuyakuli, ha omupangeli nando esiku limwe. Nena oto ziminwa koMuwa ngoka a ti: "One omu shi shi, aakwaniilwa ohaa lele iigwana, naanankondo haye yi pangele noonkondo. Ihe omokati keni mwaa kale ngaka, awe, ongoka gwomune a hala a ninge omunene, oye na ninge omupia gweni, na ngoka gwomune a hala a ninge gwokomeho, oye na kale omupika gweni, ongashi noMuna gwoMuntu ine ya okulongelwa, ihe okulongela nokugandja omwenyo gwe gu ninge iikulila yoyendji."

Uuyuni nando tau lunduka, uunene woshilonga sheyakulo itau lunduluka, otatu kalelele. Ongerki tayi vulu okukala yi pewe omasindano omape. Ihe otayi ga mono ashike, ngele tayi kala mondjila yokwidhimbwa noyokuyakua.

Omuwameme omuholike! Pontulo yoye tapu tulwa nena omushigakano gwoshingoli. Ongoye oto ningwa omuhumbati gwomushigakano. Ogwo gwa hala oku ku dhimbulutha, ehuku lyelaka lyoye eshike: Jesus Kristus oYe okwa futu oondjo dhetu, shokwa si komushigakano, na tse twa ningi aana yesilohenda naanegumbo lya Kalunga. Ihe gwa hala oku ku lombwela natango kutya, okukalamwenyo kwetu itaku ka ninga eyambeko, ngele itatu ende nondjila yomushigakano. "Oshilya ngele itashi gwile mevi noitashi sile mo, otashi i-

JESUS OMUFITA MUWA.

Efimbo lounyasha olo efimbo liwa la fimana no li nondilo. Ola halika yo kuvahapu ovo va pita mo nale, ndele itava shiiva vali okuya mo, osheshi ova pita mo nale mulo. Ovakwetu, ounyasha wa fimana, efimbo letu liwa unene. OMwene wetu Jesus oYe oMufita wetu wovanyasha, ta lifa ovo ve hole okuongala moiongalele yovanyasha, tava kundafana eendjovo doMbibeli nove hole alushe molwimbo lovanyasha nokukundafana nokutalela po ovapaani novakulupe neehepele novanaudu novashunimoni, nokutalela po aveshe ovo tava nghundipala nokuendaenda koilongo nokomikunda nokuhokiolela alushe eongalo lavo efimano loMufita wavo muwa Jesus, nokuumba ongalo alushe nomwenyo muwa vehe nengongoto, nove li po ovakoshoki keemwenyo nomoimati yavo.

Hano onawa omukwetu, natango naave nenge omo u li mongudu ya tya ngaha yovanyasha va Jesus, osheshi oYe ouyelele wetu nehupifo letu, oYe oMufita wetu muwa. Eemwenyo detu ote di talaleke alushe neendjovo daye. OYe te tu endifa alushe mondjila ya yukilila. Elao nefilonghenda otali tu landula yo alushelushe, Eps.23:1-6.

Ovanyasha vakwetu nye, ava tu hole poiyoungalele yeengundumbibeli notu hole alushe opo tapa longwa omaimbilo mayapuki okutanga edina loMwene, ofye ovanelao shili, Eps. 26:8. Ofye ovanyasha otu li ovadalwa meumbo laKalunga. Omudalwa keshe oku shi eenghedi domeumbo lavo. Hano tu kaleni ovanyasha vovombamo, fye tu taleni eshi tashi tu endifa, nenge omhepo youdalwa ile oyoupika. OMwene Jesus ote tu lombwele ovo hatu kofa ta ti: Penduka! Ndele nenge twa penduka, ohatu dulu shili okupendula yo vakwetu. -- Ondjila yetu oJesus.

Kundweni komunyasha mukweni
Abraham Jakob.

kalele ashike; ihe ngele tashi sile mo, otashi vala iilya oyindji."

Oto ka kala u nesindano mendhindhiliiko lyomushigakano. Mendhindhiliiko ndika omu nesindano lyiigwana ya Afrika tayi penduka. Kala wa yambekwa e to yambeke.



KALUNGA A POPI.

(Es.2:8.)

*Kalung'a popi nale
KoMuwan' omuholike:
"Omwandje gwomuunale,
Wa za muukwaluhe.
Indila ndj' aapagani.
Notandi ye ku pe
Uuthiga, aapagani
Ya ka ninge ye ku fe."*

*OMuwa Jesus a popya
KuTate Nampongo:
"Te kuth' aayamba momupya,
Ndi ya p' oshilongo
Sha yela sheVangeli
Shi na eVangeli
Sha udhithwe' Vangeli
Sha gwan' eVangeli."*

*AaNdonga, aaKwanyama,
AaKwambi, aangaNdjera,
AaMbarantu, aaKathima,
Aakwaluudh' aaMbandja,
AaKolonkadhi' aaTunda,
AaNkumbi naaHinga,
Nosho aaNdombodhola
Uveni k' aankwankwa.*

*Amuhe mba nda popi,
Etumo longeni,
Olya Kalunga ketu
Lya zile megulu,
Olye ya, tse tu ninge,
Ongash' e mu indile,
Ooha dhuuyun' auhe
Dhi kal' adhihe dhe.*

Jason Amakutuwa.

O K A A N D J E T U

OMAMBO OMAPE

ga holoka, oto vulu oku ga landa mostora yomambo:

Oshilalakanenwa sheputudho
(Liina Mpanda) **10c.**

Mary Slessor
(Olya lundulwa kuHosea Nampala) **17c.**

Efatululo lyiIlonga yaaYapostoli
(Rauha Voipio) **25c.**

Omahempululo Gongerki **85c.**

Omambo ngaka ga indjipalithwa, opo ga longithwe mooskola dhaamati no-dhaakadhona nomooskola dhaanona wo:

Uukalinawa st. III-IV **20c.**
-,,- **st. V-VI** **30c.**
Omwalu st. III **25c.**
-,,- **st. IV** **25c.**

Meme na tate, ongoye ngoka u uvite wa nyengwa okuputudha aamwoye, lesa okambo hoka: Oshilalakanenwa sheputudho, nena oto mono oondunge odhindji niinima oyindji tayi ku kwatha moshilonga shoye.

Na ne aagundjuka, endeleleni mu ilandele embo ewanawa shili: Mary Slessor. Olyo tali hokolola omukadhona omunafabrika mevi lya Skotland nkene a ningi omutumwa nomulongeli gwoMuwa. Embo ndika tali vulu oku ku ulukila wo, omukadhona omuWambo (nomumati wo) nkene to vulu okulongela oMuwa gwoye.

Aasitagongalo naevangeliste na-nashilonga ayehe nosho amuhe mbo-ka mwa hala mu pukululwe miinima oyindji yomiIlonga yaaYapostoli, opo mu wape okufatululila ooyakweni wo iinima mbyoka, otamu mono ekwatho ewanawa shili, ngele tamu ilandele efatululo lyayo.

Nosho wo embo ewanawa nolya simana, twe li tegelele nondjuulukwe olyo Omahepululo gongerki. Membo omu na:

Viktoria Ndahafa Shilongo a hulifa ouenda waye eti 27 mwApilili. Oye okwa dalwa 1904. Eedula daye mokukala moukriste odo 59. Mokudika eumbo laye na tate Petrus Shifula, ovo ve li dika moHalushu. Meme Viktoria a kala moshilonga shoulongi omido dimwe, eshi ovo va tembukila koNguediva. Oye a kala efimbo lile omufiyekadi. Oye a li omuimbi muwa nokwa hafa okulongifa omaano aa e a pewa kuKalunga. Nokwa putuda ounona vaye nondjila ya Kalunga. OMwene Kalunga okwe mu longifa moku tu kumaida neendjovo da Kalunga noku tu kwafa.

Paife okwe tu fila eefiye daye momake oMwene. Ovakwetu meitavelo, tu ilikaneneni eefiye edi di li po 5, osheshi kadi na vali omufilishisho umwe, oye ayeke Kristus Jesus. Ndele oye omudiinini nomu-naeenghono.

Ovakwetu, tu kondjeni, opo tu findane-
Marta N. Shifula

Ehempululo lyeitaalo lyaayapostoli,
Ehempululo lyokuNikea,
Ehempululo lya Atanasius,
Ehempululo lyawAugsburg,
Okatekisa okanene ka Dr. Martin
Luther.

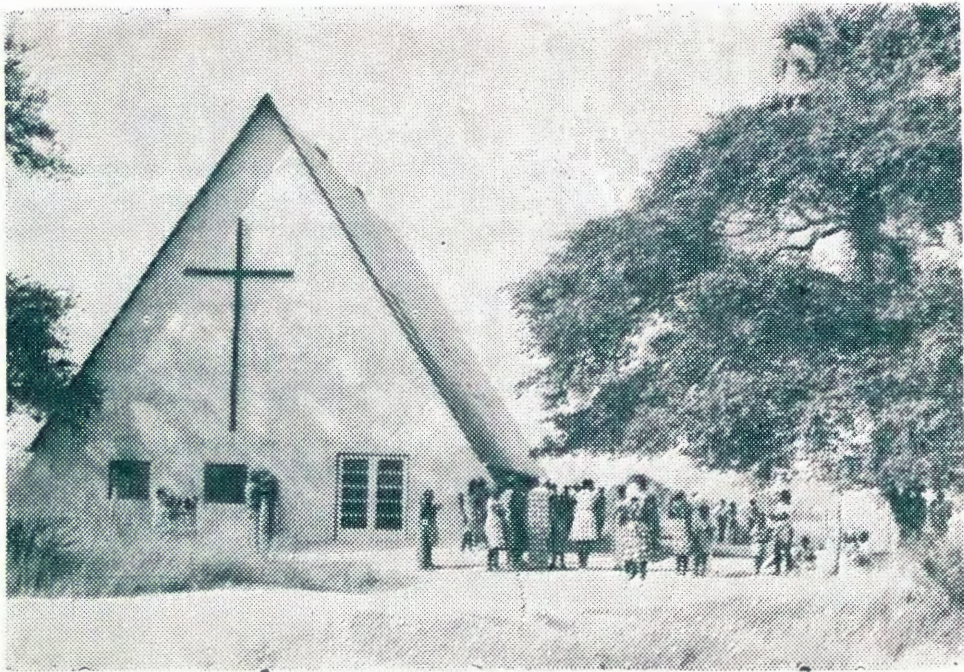
Amuhemuhe ne, endeleleni mu ikongele uuyamba u li momambo ngaka noitau hulu po.

SEPTEMBER

1. S. **Os. 12 ya landula Uukwatatu.**
Jer.38:9-13.17-20. Mark.7:31-37.
2Kor.3:3-9.
2. M. Mark.1:21-28. 1Mos.33.
3. D. 2Aak.20:1-7. 1Mos.37:11.
4. W. Jak.5:13-18. 1Mos.37:12-36.
5. Do. Mat.9:35-38. 1Mos.39.
6. V. Mark.5:22-43. 1Mos.40.
7. Sa. Luk.4:38-44. 1Mos.41:1-36.
8. S. **Os. 13 ya landula Uukwatatu.**
Mat.6:1-4. Luk.10:23-37.
Gal.3:15-22.
9. M. Jak.2:1-13. 1Mos.41:37-57.
10. D. Mat.10:40-42. 1Mos.42:1-28.
11. W. Sak.7:8-14. 1Mos.43:1-17,26-34.
12. Do. 2Mos.22:20-26. 1Mos.44:1-18,30-34.
13. V. Hebr.2:11-18. 1Mos.45:1-24.
14. Sa. Jer.22:13-19. 1Mos.45:25-46:7,28-34.
15. S. **Os. 14 ya landula Uukwatatu.**
Joh.9:1-7,13-17,32-39. Luk.17:11-19.
Gal.5:16-25.
16. M. Mark.1:40:45. 1Mos.47:1-26.
17. D. 1Tim.6:12-17. 1Mos.47:27-48:22.
18. W. 2Kor.9:10-15. 1Mos.49:28-50:14.
19. Do. 1Tess.1:2-10. 1Mos.50:15-26.
20. V. Fil.1:12-18. 2Mos.1:1-14.
21. Sa. Fil.1:19-26. 2Mos.1:22-2:25.
22. S. **Os. 15 ya landula Uukwatatu.**
Luk.16:10-12. Mat.6:24:34.
Gal.5:25-6:10.
23. M. Omayel.30:4-9. 2Mos.3:1-20.
24. D. 1Tim.6:6-12. 2Mos.4:1-17.
25. W. 1Kor.7:20-24. 2Mos.4:18-23,27-31.
26. Do. 1Aak.17:1-6. 2Mos.5:1-6:1.
27. V. Joh.4:31-38. 2Mos.7:1-25.
28. Sa. Luk.6:20-26. 2Mos.12:1-20.
29. S. **ESIKU LYA MIKAEL.**
Joh.12:(25,26)27-32. Mat.18:1-10.
Ehol.12:7-12.
30. M. 1Mos.32:1-3,10,11. 2Mos.12:21-33,51.

OVAFI MEENHANA MODULA 1962

	a dalwa	a fja
Rakel Nduue	1898	17. 2. 62
Rakel Hamundilo	1924	5. 5. 62
Lusia Kafilu	1933	14. 5. 62
Emilia Muhongo	—	31. 5. 62
Gabriel Haikoti Martin	23.9.61	11. 6. 62
Julia Shalihahue	1867	26. 6. 62
Rauna-Ndapeua		
Jolookeni Reinohold	22.4.62	19. 6. 62
Maria Shilangu	1891	30. 8. 62
Mikael Gottlieb	9.10.62	23. 10. 62
Mirjam Kajoja	1870	15. 30. 62
Lovisa Salomo	22.9.61	26. 11. 62
Saara Mutota	1872	25. 11. 62



“ O N G U T A ”

Ompumbwe onene otwe yi dhimbulula nale notwe yi humbata ethimbo ele moomwenyo dhetu, oya gwanihwa ngashingeyi. Oyo ndjika: ongerki oya pwa kutungwa koNdangua, ongerki ndjoka tayi yakula unene aamati naasamane mboka haa yi kiilonga yawo kuUshimba.

Ngele to uka koNdangua, oto mono nkene mokati komapya, momuzile gwoomwandi nogwomulunga omu na ongerki yi nondunda yiipeleki nendhindhiliko lyomushigakano kekuma popepi nomwelo gwomake-nde.

Omubisofi Leonard Auala naasitagongalo 9 oye ya pomwelo. Noshho wo aatungi yane peha lyaatungi 40 ya tungu ongerki ndjoka, otaa thikama mpoka. Oyo taa tumbula kehe ngoka etumbulo lye lyomoMbibeli na gumwe gwomuyo ota gandja komubisofi oshipatululo shongerki. Oye te egulula omwelo nokuithana aantu ye ye mo.

Ongerki ndjoka oya dhiladhilwa komusamane Voutilainen, ongoka e yi tungu naakwathi ye aaWambo, oyo yo opala unene. Kekuma konima yoshigalikaneno oku nomushigakano omunene nomuluudhe. Pekota lyomushigakano omu naantu aaWambo yatatu (tashi ti: omafano gawo). Oyo taa taalele komushigakano nokuuka kugwo. Omakende gaali gomondunda taga piithile mo nawa uyelele wetango.

Omubisofi Auala ota yi koshigalikaneno naasitagongalo yahamano. Oye ta lesa oohapu dhi li muAakwan. 19:7,8. “Omuyengeli gwoMuwa kwe mu gumu lutiyaali nokwa ti: Thikama ngu lye, oshoka ondjila onde u nokuya na yo, yi ku nyenge. Oye nokwa thikama, kwa li nokwa nu nokwe endithwa koonkondo dhikulya mbika omasiku 40 nomutenya nuusiku ndongo ondundu yaKalunga Horeb.” Ongerki ndjika oya lukwa “oNguta.” Oohapu dhaKalunga odho onguta tayi tu pe oonkondo, nando tu nokwenda ondjila onde. Onguta ndjoka itayi pu po nande. Omolwa sho inamu konga shoka mu shi lye nenge mu shi nwe. Inamu lalela iinima mbyoka tayi hulu po. Ihe kongeni tangotango oshilongo sha Kalunga, nena ayihe mbika tamu yi gwedhelwa po wo. Noohapu dha tya ngaaka omubisofi okwa yoolola ongerki ndjoka yi kale ya yapulilwa okulongela oMuwa Kalunga.

Melongelokalunga lyotango mongerki ndjoka lya landula ko, omusitagongalo David Shihepo okwa uvi-
tha patekste Ps.67:4-8: Oshituthi shika osha tamekwa nehambeledondjimo. Omolwa shike oohapu dhetu nomaimbilo getu ga holola ngaaka ehambe-
lelo? Iigwana tayi hambelele Kalunga. Eeno shili, oYe na hambele-
lwe! Mosondaha ya piti otwa dhiladhila iinima iinene twe yi ningilwa

kuTate Kalunga, shokwa tumu aatumwa yotango mevi ndika, koshigwana she ende kokule na Ye. Kalunga okwa longitha aatumwa ye. Noshho wo pethimbo ndika lyetu. Otatu shi dhimbulula peni?--- Ongerki ndjika oya tungwa kaantu, ihe Kalunga okwe ya pe onduge nuunkulungu moku yi tunga. Ongerki ndjika oya longekidhilwa aalumentu mboka taa gongala pomahala ngaka opo yu uke kuUshimba kiilonga yawo. Oyo taa zi koWambo ayihe nokwAngola wo. Ongerki ndjika ya fa oshiyuulitho sha popiwa koMuwa Jesus ngeyi: Dhugila puule mpe, ne mu ka lukile iiyuulitho yeni. - Aantu yangapi otaa hambelele Kalunga onena? Oye okwa gandja ePona lye, opo shaa ngoka te mu itaale, kaa kane, ihe a mone omwenyo gwa aluhe. Eeno shili, Kalunga na hambelelwe!

Omubisofi okwa laleke nuuyamba omwene gwoshilonga shika oshipe, omuevangiliste Filemon Nashihanga nomusitagongalo gwaagundjuka Kleopas Dumeni, ongoka e noshimpwiyu okuutha iinima ayihe tayi ningwa mongerki ndjoka.

Omukuluntutumwa A. Hukka, ongoka a thikama a ye koSoomi negumbo lye esiku tuu ndyoka, okwa tumbula ngeyi mekundo lye: Efanu tatu li mono kekuma lyokoshigalikaneno komeho getu, otali tu dhimbulukitha, omuntu kehe, te ya mongerki ndjika, ote ya pomushigakano gwa Kristus.

Omusitagongalo E. Angula okwa ti: Jesus omo e li muka, a paluthe niikulya iikwagulu omboka taye ya mo. OYe ote ya palutha noohapu dhaKalunga.

Omubisofi okwa hokolola natan-
go kutya, ongerki ndjika ompe oya
pula ooRanda dhi vule 5000. Ookuum-
me yomuSoomi oya gandja ooRanda
2000, oshiketha shongerki yomoWa-
mbokavango sha gandja ooRanda
ndhoka dha hupu, dhi vule 3000.
Ihe ongerki inayi pwa po thilu nata-
ngo. Otaku pumbiwa ongendjo yo-
kuithana aantu mongerki, oolampa
dhokuminikila moohungi na pamwe
komeho wo okahumba.

Mongerki omu na iipundi tayi
gwanene aantu 315. Ihe moshituthi
pamwe oshititatu shomaantu osha
gwanene mo. Ongundu onene oya
pulakene pondje pomakende nopo-
mwelo.

OSHIWIKEMBIMBELI
MOSEMINARI MOKAHAO.

Omumvo kehe Kalunga okwe tu longe-kidhila iipalutha yokomwenyo.

Ngashi oMuwa a li e tu dhimbulukwa omumvo gwa yi, osho wo e tu dhimbulukwa nuumvo. Esiku eti-22 Julie 1963 otwa tame-ke oshiwike shetu shoMbimbeli, shoka sha wilikwa kaamati ya Kalunga ngashi haye shi ningi olwindji. Oyo aasitagongalo Jason Amakutuwa na Efraim Angula.

Esiku lyotango otwa tseyithilwa, nkene oohapu dha Kalunga dhi nomayego noonkondo, na nkene ohapu ndjoka ya li petameko mokutuma Jesus kutse, aalunde.

Otwa pulakene nga, ihe oomwenyo dhe-tu nomakutsi gokoomwenyo oga li ga siiki-lwa komutondi. Ihe oMuwa Jesus sho ina hala tse tu ka kane, okwe tu tonatitha koomwenyo, notwa mono uuwinayi wetu auhe, notwe u hempulula, ngashi tu uvite. Oye-ndji oya tokola nookuli, ya hala ya longele oMuwa gwawo. Elago oli thike peni twa longelwa koMuwa? Ngashingeyi otu uvite uukwashilongo wa Kristus.

Omuwameme omumati nomukadhona, o-wa mona oMuwa gwoye? Meme, tate, kuku omusamane nomukulukadhi, omuwa tsakane-ka tuu shili, waa nelimbililo? Onawa. O-Muwa mwene ta ti: aanelago omboka ya i-thanwa kohango yoNzigona.

Ohole ya Kristus oyi thike peni, sho aaseminari yomoKahao aluhe te tu tumine iiwikeMbimbeli. Tse yakweni, otu na ombili ya shili. Mukwetu, ombili yoye oya za tuu medhimopo lyoondjo? Ano ngele ou na ombili ya shili, ongoye omunelago shili. Shila otwa gwana ashike tu tumbule pamwe na ngoye oohapu ndhika, Rom 8: 35-39, "O-lye ngo te tu topola mohole ya Kristus."

Elago oli thike peni, sho twa ningi e-siku momuzimbi gwesilohenda.

Otandi halele aasamane mbaka, Kalunga e ya pe ethimbo ele nelago mokuuvi-tha kwawo, opo ya yulile oMuwa oohi o-dhindji. Na ando ya galuke natango mwAugeste 1963.

Tangi

Emilia Ndinelago Josef



Omwa dhimbululwa, aanona aakwankala haye ya koskola oyendji, omwalu gwawo ngashingeyi 130, onkee ano otaa pumbwa aalongi. Epulo ndika:

"Olye ngo tandi mu tumu?"

otali uka kungoye, omulongingoka wa pita moseminari. Ngele ngoye u uvite

oMuwa te ku ithana u ka longe mu **NKONGO**, tuma ombapila yoye yeindilo kEpingelongerki, tali ka gongala 6-7. 9. 1963.

AATAAMBI YOMUKWETU MOMUMVO 1963

Aataambi kumwe Maakriste ethele

1. oMundaungilo	220	13. 9
2. Nkongo	135	11. 3
3. eTilyasa	175	7. 9
4. oNguediva	135	7. 3
5. oGongo	113	6. 9
6. oNyaanya	238	6. 6
7. oKahao	322	5. 8
8. Nakayale	248	5. 7
9. oLupandu	62	5. 2
10. eDundja	104	4. 3
11. oNdobe	175	4. 2
12. oNaanda	65	4. 0
13. eEnhana	95	3. 8
14. oNesi	65	3. 5
15. eNgela	205	3. 3
16. oKatope	64	3. 2
17. oNiipa	95	3. 2
18. oShigambo	174	3. 1
19. eHeke	75	2. 8
20. Elim	158	2. 5
21. oHalushu	87	2. 4
22. oKalongo	107	2. 3
23. eNdola	102	2. 2
24. oNiimwandi	78	2. 2
25. oKankolo	58	2. 1
26. oNgenga	106	2. 1
27. Tshandi	102	1. 9
28. oKaku	78	1. 8
29. oNayena	120	1. 5
30. oNtananga	49	1. 4
31. oLukonda	58	1. 0
32. oShitayi	46	1. 0
	3894	
kuUshimba	2250	
koKavango	121	
	6265	

Ayehe kumwe 6265

Omwalu gwaataambi gwi indjipala momagongalo ngaka:

1. eTilyasa
2. oMundaungilo
3. oLupandu
4. oKaku
5. eHeke
9. oNaanda
7. oNiipa
8. oNayena

Ihe omwaalu gwaataambi gwi indjipala unene kuUshimba, aahalithi oya kondjo nawa. Otatu mu pandula noku mu halele eyambeko lya Kalunga moshilonga shika oshinene nosha simana.

T. L. Huandakuti, Windhoek, ota dimbulu-kifa ovaleshi aveshe kutya efiku lOmuene uoje tali uja. Olo otali tema ongomundilo. Olo efiku tali tu tilifa, onge hano tu diinineni okukala moupafi. Joh. 5:24; Rom. 10:1,10

Teofilus Shangali, Windhoek, ote tu kundu noohapu dhi li mEps. 119:25-29. Tu koto-keni twaa kale aakriste padhina, ihe aakriste ya shili. --- Tala Mat. 5:13-16.

OSHIKOLOLO SHAAGUNDJUKA

OMULADITHI NONKOLWI A MONO EHUPITHO

Charles G. Finney okwi ipyaki-dhile nokuopaleka okukalamwenyo muDetroit. Ongulohi yimwe sho a yi mongerki, omulumentu gumwe o kwe mu pula: Ongoye Dr. Finney?"

-"Ee."

- "Otandi ka kumwa, ngele ito ka hololela ndje olukeno lwoye. Ngele ongulohi ndjino wa mana, ito ka ya pamwe na ngame kegumbo lyandje noku ka kundathana sha o-molwokukala kwomwenyo gwandje."

-"Onda hala. Tegelela ndje ano manga."

Finney okwa yi meni, aalumentu yamwe ye mu indike ko - "Omulumentu okwa li a hala shike, omumwameme Finney?" "Okwa hala ndi mu thindikile kegumbo lye."

-"Ino shi ninga nando."

-"Otashi ehameke ndje, ihe onda uvaneke, otandi ka ya pamwe na ye."

Konima yeyakulo nakumutegelela ngu omulumentu okwe mu kwata kokwaako nokwa ti: "Ila, tu ye pamwe." Sho ya thiki pehulilo lyondjenda yawo, omulumentu a thikama nokwa ti: "Tegelela kashona mpaka, omumwameme Finney."

Oye okwe egulula omwelo nokwa ithanene Finney meni. Ondjugo oya li yaa na nando oshitafula nenge oshipundi. Omulumentu okwa pata omwelo manga ye li meni nokwa kutha okandjembo komoondjato.

-"Inandi hala oku ku ningila uwinayi wa sha, onda hala ashike okupula omapulo gamwe. Owa dhi- mbulukwa tuu shono we shi popi mevutho lyoye lyongulohi yohela?"

-"Onda tile ngiini? Onda dhi- mbwa."

-"Owa tile: Ombinzi ya Jesus Kristus otayi yogo po oondjo adhi- he."

-"Eeno, Kalunga ote shi fatu- la," Finney a yamukula. Omulumentu okwa ti: "Mumwameme Finney, ou lwete okandjembo hano. Oka dhipa- githa aantu yane. Yaali ongame nde ya dhipaga, yaali omudhiginini gwo- ngulu yandje yomanwino sho kwa li ku nolugodhi mongulu ndjoka yandje yokuhangela iikolitha. Oku na tuu ehupitho nenge etegelelo lyehupitho kombinga yandje?"



Finney a yamukula: "Ombinzi ya Jesus Kristus tayi tu yelitha kuu- lunde auhe."

-"Omwameme Finney, epulo na- tango. Kombinga onkwawo yela ndi- no, oku na ekandiina lyandje. Oha- tu hangele mo iinuwa kehe yi pewe shaa ngoka. Olwindji onda yugu o- mulumentu nokasenti ka hugunina. Komukalo nguka gwandje gwokula- nditha nokuyuga aalumentu, osho ngeyi aakulukadhi nuunona ya sile momagumbo ondjala, shoka ashihe ya li ye na oku shi lya sha longithwa komuntu gumwe peha lya ayehe. Olwindji aakulukadhi oye ya huka nuuhanona wawo noya indile ndje ndaa landithe we iikunwa kaalumentu yawo, ihe onde ya tidha po owala nonda tsikile okulanditha iikunuwa. O- ku na tuu etegelelo lyandje?"

-"Kalunga ota ti: Ombinzi ya Jesus Kristus, oMuwana, otayi tu yelitha koondjo adhihe."

-"Epulo natango, omuwameme Finney, kombinga yela ndiyaka ekwa- wo li li kombinga onkwawo yela ndi- no, oku na ongulu yomalandithilo, othora ombwinayi nohongololi ngashi oondjo noyi li po ombwinayi ngashi sa- tana. Hoka kuyo otwa popile ko ii- fundja iinene mokulanditha kwetu. Aalumentu ya zi kongulu yomanuwi- no niimaliwa moondjato dhawo, no ngele ye ya pehala ndino, oya kani- thile po iimaliwa yawo. Okuza mpano aalumentu oyendji oya zi po noye ki idhipaga, sho ya kanitha iimali wa aywo. Oku na tuu etegelelo lya- ndje?"

-"Kalunga ota ti: Ombinzi ya

Jesus Kristus, oMuwana, otayi tu ye- litha kuulunde auhe."

-"Natango epulo limwe, noto vulu okuya. Onkalogumbo yandje o- yi li peende lyokombinga yepandaa- nda ndika. Oko kwa kala omukulu- kadhi gwandje nokamuwandjekadho- na komimvo omulongo na yimwe, Margaret. Konima yoomvula omulongo na ndatu dha pita onda tsakanekela okakadhona okawanawa muNew - York. Onde ka fundju. Onde ka lo- mbwele kutya, ongame omusimani. Notwa hokana na ko. Sho ke ya mpa- no noku uvu omikalo dhoshili dha- ndje, nonkalelo sho e yi uvu, okwa teka omwenyo. Molwiilonga yandje okukala kwe okwa li oheli kevi. O- lwindji onde ya kegumbo, nda kolwa, nde mu dhenge, nde mu longitha na- yi, nde mu patele pondje, nda ningi nayi omwenyo gwe ongokanamwenyo. Omwedhi gwa piti, ongulohi yimwe ondi ile megumbo nda kolwa, nonda tameke oku mu dhenga. Omuwandje- kadhona okwa piti a yi pondje, onde mu dhenge moshipala nonde mu u- ndulile kesiga lya hanya, hoka okwa- ko kwe okuza kepepe sigo okoshike- sho kwa pi nopwaa na we etegelelo lyealudho. Omuwameme Finney, opu na tuu etegelelo lyandje?"

Etsikilo moshifo sha Septemba.



OSHIKOLOLO SHEGUMBO



Efano lya fanekwa ku Miss Eleonor.

*Aanona
yomu-
Belgiese
Kongo
taa
imbi
mofu-
nguna.*

OMUVALI NOMUNONGEKI.

(Etsikilo)

Esiku limwe okamatyona kaandjetu, okamwandjegona oka zi kenongelo ka dhengwa komulongi gwako. Yakwawo oya holola kutya, na ko oka li ka kutha oshiti ka dhenge omulongi. Yina opo a li, sho tashi hokololwa nokwa ti: "Na kwatwe a twalwe komulongi a ka dhengwe." Yinaku okwa ti: "Aame ngaho handi mu denge." Okwe mu dhenge shili ta ti: "Tamu denge ovalongi nye onye itamu dulika." Oye shi shi kutya, okanona kake shi okudhudhu, noye wete ngaa usama womulongi, ihe inaye shi hololela omunona, awe. Otaye mu kwatha pamukalo gwi ili. Ngele ta dhigininwa ngaaka, u shi te ke shi ninga we! Awe. Ota ndhindhlike kutya, nani omulongi gwandje ngele a geya, naakuluntu yandje oya geya. Nani ayehe yamwe.

Unene ngashingeyi, sho omanongelo taku tiwa ogoshigwana, opwe ya uupyakadhi uunene. Oonani dha tiliganekelathana omeho netemba lya thikama. Etemba ngele tali thikama, omuhingi ha topitha ongola tangotango koonani dhopekota, oshoka odho dhi noshilonga. Ngele itadhi nana, etemba itali zi po shili. Dhilwe ngele dha kondjo, pamwe tadhi ka tokoka

ko dhi ikalele netemba tali hepa.

Komeho oku niihaluthi oyindji tayi thikameke, nenge tayi pugumitha oonani dhi inekelelwa komeho. Ngoye to tseya iihaluthi moshitauwa shoye na ngame ndi shi yandje. Olwindji onda tila nonda puguma, nenge nda thikama owala. Oofraha dhaantu otatu ke dhi thikitha tuu kegumbo? Nenge otse "oonakufutwa:" Joh. 10:12, 13. Oofraha odho omagano gi ili nogi ili ga shitiwa maanona kuKalunga, nogo oshifetha she shi li mutse. Okwa hala shi tonatelwe noshi dhiginiwe shi kale sha ye'a, sigo aluhe. (Tala mElongo lyUukriste No. 44).

Otandi pula natango omapulo gamwe: Ongoye omuvali oho taamba ngiini omahokololo gaanona yoye gopokati kawo naalongi, noho ga yamukula ngiini? Owa tungu shike pokati keni naalongi no niilyo yomEtonatelo - noyomEpangelonongelo? Ne iilyo omwa yelutha shike melandulathano ndika epe lyomanongelo? Ngoy omunongeki owa taamba ngiini mbino ayihe?

Otse aantu otwa pewa uuyamba owindji kuTate Kalunga, sho tu noondunge nomaye gomuye. Ngele iinamwenyo yi shi okulongelakumwe, unene otse otatu pulwa shili oondu-

Meme omuholike,

Ishewe onda hala oku ku nyolela sha, oshoka tandi tseya ehalo lyoye okulela nawa aamwoye nokupalutha nawa aanegumbo lyoye ayehe naamboka ye li maandjeni.

Oshinima osho OMAHINI.

Ngashingeyi iimuna yi li pamwe pepi negumbo. Iyaloo, tamu pewa omahini. Andola one amuhe mu pewa omahini kehe esiku! (Kehe gumwe ando etata lyokakopi mesiku, opo a kole nawa, kaa kwatwe kuuvu.) Momahi omu noovitamini nomongwa yi ili noyi ili niitungitho iiwanawa yolutu. Unene aanona sho taa koko, otaa pumbwa iipalutha ya tya ngaka ya kole.

Meme, u nokutseya wo okusila omahini oshimpwiyu.

Ngele momahini mu noonyata noombuto dhuuvu, omahini kage li omawanawa we. Oombuto dhuuvu tadhi indjipala nuupu momahini. Omolwa sho iiyaha yokupungulila mo omahini tayi yogwa nomeya ga yela nothewa nawelela notayi sipulwa nawa ishewe. Manga omukandi ina tameka okukanda, e nokuyoga iikaha ye nota yogo omagundji goongombe wo. Oto pewa ngeyi omahini ga yelage nondilo kaamwoye notaga koleka omalutu geni.

Peha lyomahini oto vulu okulongitha omayi. Eyi limwe kukehe gumwe mesiku.

Meme, ngele wa hala okupula sha kombinga yuundjolowe, oto vula okutuma epulo lyoye koMukwetu. Otandi kambadhala oku ku yamukula.

Na hugunina tandi ku kundu niitya mbika: "Omuwa okwa ti, itandi ku etha noitandi ku thigi po nando." Hebr. 13:5.

Nomakundo gombili
Kuume koye.

nge noonkondo nuudhiginini, nohole nehale ewanawa neviliko, opo tu adhe oshilalakanenwathikilo lyetu. Kalunga ne tu pe ohenda ndjika.

"Oshilonga oshinene
We shi ithanene ndje;
Nda li ndi shi ndi noonkondo,
Onke osha nyenge ndje."

Liina Mpanda.

OSHITEYOTHINGE

*Peyo Iya kuzimogona
iimeno yomelundu nomiti dhomugulu,
Omafo lelelele noongala nyeketele.
OMuwa te dhi zaleke.*

*Uusiku nge we ya,
eyadhimo lyoonyothi neyelo ndyo lyomwedhi,
komafo tali welima niihwa tayi ligola.
Muuyuni wetu mbuka.*

*Etango sho tali piti,
aashitwa mbo ayehe noondhila dha tengele,
iimuna niihono oyo wo ye shi mono,
okaantanya sho ka tsu.*

*Ndundu dhokuushimantu,
manya nondiyamande uulenga wevi ndika
Omafuta tutututu niikogo mbyo yegulu,
ayihe tayi kumitha.*

Sakeus Efram.



ONGUDI YOUNPAANI

Ovaenda ovatilyane ove shi dimbuluka nga, nhumbi ovanhu tave va tale nomesho manenene mehondamo konima yomidingililo, ndelene inava shiiva nande nande osho ovanhu va teelela ve shi mone muvo. Okwa li ku neendjovo dilili nodilili tadi popi ovalandifi vovapiya. Ongaashi kwa li eendjovo tadi ti kutya, otava dulu okuhwama omundilo notava kanene nomwifwi momhepo, ndelene, eshi pwa pita okafimbo, tava dulu vali okuholokela ponhele imwe ilili nana ongaashi ve li. Otava dulu yo okushita mokambululu kanini keyoka moshivanda shikukutu sha femanya, nokupita vali kombada yedu ponhele imwe ilili. Eshi va kala omutumba, ova dula yo okuteta omutwe wavo noku u tula pedu ponho yavo, ndelene omesho nokanya take linyenge novatali voshinima eshi tava kwatwa kehaluko linene.

Va dula yo okuninga kutya, pwa fa pwa holoka eengobe dihapu, ndelene opo tuu opo da kana vaii.

Ovanhu ovo ve va tala nokutalelela, va mone sha shomoinima ei ile sha shimwe tashi va kumwifa. Efimbo alishe ovaenda va kala moughamba ovanhu inava efa nande oku va shikula nomesho avo.

Onguloshi kwa fika vali ovalumenhu omulongo ovalaule, ovo avesho vakula novanaenghono, va djala oikutu iwa. Va humbata kombada yavo eeshako di yadi oinima novatatu vavo va humbata komapepe avo oshiti sha kula shi nelyenge la dingilwa kombada yasho.

Ongula inene yefiku la shikula kouhamba kwa fika vali omutumwa umwe ulili, a loloka neenghono nokwa shiivifa kutya, ovakwaita ova li pokufika kongaba yoshilongo. Pokuuya kwaye oye okwa tandavelifa elaka eli, nomomaumbo mahapu mwa dja ovanhu eengundu neengundu, va ka shakeneke oonakuya.

Kombinga yomofuka mwa dja ongudu inene ya laula, oya ehena komesho kanini nokanini nokuwelela neenghono, newelelo olo la udika kokulekule.

Ovakwaita eshi va li pokufika moshilongo, ova tala kutya, efimano linene kuvo, ngenge tava welele neenghono dinenenene, opo ovo yo ve li kokule, va udeko nova diladile kutya, otava eta ovakwatwa vahapu noimuna ihapu. Ovakainhu ovo ve uya ve va shakeneke, ova hovela okude nga omake kumwe, nokutanha noku kuuililila efindano.

Ovakwaita ovakwaludi

ovo ovaladi.

Heeno shili, heeno shili

ovo ovaladi.

Tava eta ovakwatwa

noimuna yo ihapu.

Heeno shili, heeno shili

oimuna yo ihapu.

Ovakainhu avesho va tanha nakeshe umwe okwa kuuilila ekandanga omolwefindano.

Taku twikilwa



SHA FA SHA DIMBIWA

Ovanyasha ovaholike mongerki yetu aishe, moshiongalele shetweni 1.9.1962 twa tokola, tu ningeni ehanganano lovanyasha opo tu longeni oshilonga shetumo. Otwa udafana, pa ningwe oshikefa shetumo shovanyasha vongerki aishe. Eshi tashi ongelwa apeshe opo pe na oshiongalele shovanyasha mongerki ei yetu opo tu dule okutuma omunyasha ou ta kwatwa komhepo yehwamo letumo ngashi va li po va hwama va hala okuya pefimbo linya.

Mokupwilikina sha fa sha dimbiwa, pamwe sha fyala moshiongalele. Neudo twa hovela vali oiongalele yetweni tu diladileni, ohatu ningi shike netokolo eli, opo tu longeni oshilonga shetumo mongerki ei yetu. Eyeletumbulo limwe tali ti: omuhangakenwa iha findi. Ofye ovanyasha vongerki, shaa tu li kumwe, ohatu ka finda.

Paulus Andreas.

OUNYUNI OTAU TONGO SHIKE

EKUMANHAULULI TALI KOLEKWA.

Oushilo Berlini. - Ofyeni otwa kala tu shi shieni, kutya poita ya Hitila kuRussia oya li konyala i findane. OmuRussia okwe shi konekele kuyele, onghee a pulile ekwafo komuIngilisha, komwAmerika nokomuFransa. Ava vatatu ova hangenena na Russia, nopo aveshe kumwe vane va hangakena Hitila (Ndowishilanda). ONdowishilanda eshi ya tewa, opo oshilongo shavo sha tukulwa moitukulwa ine, ya yeleka ovahangakeni. Oshitukulwa sha Russia sha kwata Berlini (oshilando shepangelo sha Ndowishilanda) lokoushilo, fiyo oushilo aushe wa Ndowishilanda. Oitukulwa yaa venya vatatu, ya ama koutokelo wedu olo, ndele ei itatu oya kala ngaa memanguluko. Eshi shomuRussia osha kala ongonghwate shili nosha li shi nokwefifwa oukriste, shi tambule oukomune - elongo olo tali ti, kaku na Kalunga. OvaNdowishi-Ushilo va kala hano hava shuukile kuNdowishilanda-Utokelo. OmuRussia okwe shi handuka nokwa hovela okutungifa ekuma pokati ka Ndowishi'landa-Ushilo na Ndowishilanda-Utokelo. Oli nomufika mule nola ndabulwa navali pa tulwa ovapashukili. Vamwe va hetekela okufa koshi yekuma va mbadukile lwokombinga ikwao. Oonakumonika ova efiwa ngo va hovele okufa lwahaku yekuma. Mokumbadukila lwahakwinya, okoholo, po tapa fufilwa pombefelo.

Okutungwa kwekuma eli okwa pwa omudo 1961. Omolwoushuukedi wa popiwa metetekelo, omuRussia okwa tungifa vali odalate yomakiya ya paka oshinano shomanha 100 pokati kayo nekumanhaululi, kombinga ya Ndowishilanda-Ushilo. Mepandavanda omu ihamu endwa. Pehovelo okwa li la lukwa "Epandavandaleameno", ndele paife la ninga "Epandavandalondjidikila". Ku piti odalate oyo u ehene popepi nekuma olo. Ovandowishi-Ushilo ava va pewa eepasa, otava dulu ve shi ninge, unene ounona vofikola, ovo oyofikola davo di li lwahakwinya yongodi. Eekuru, eendjuwo doufe, eehotela, dovaenda nodomafiikinini (eebiskopa neesirkusa) odo da tokolwa kepandavanda olo, oda idilwa. Otwa hangika twa popya, kutya oshilando shepa-

ONDJIIPANGELA YA KENIA.

Kenia ota mono ondjiipangela mo-12 Desemba 1963, shama oyomhumbiwanghatu adishe odo da pumbiwa da ningwa. Eshi hanga oshi ningwe nokuli nale, ndele Tom Mboya, omuministeri woveta wa Kenia, okwa indila Duncan Sandys, omuministeri weekoloni da Britanye nomanguluko ado, kutya emanguluko oshinima shidjuu. Otashi pula shihapu moshiwana, onghe a indila ova-kwaita va Britanye ve va kalele natango oule womudo.

"Oonakushiiva emanguluko eshi tali ti, ove shii yo eshi tali pula oonakumanguluka".

ONGHATU YEHONGO.

Sn. J. G. H. van der Wath, omukulunhu woitokolwanima ya Suidwesi-Afrika-Adjunk-minister vir Suidwesi-Afrika-aangeleenthedede - okwa ti paife omuvalu wonona vovaMbanhu meefikola ou fike po 45,000, vomeefikola 293 meni nopondje yeepolifinhele. Ovalongi ve fike 1,200 ove li meefikola odo. Omuvalu wovalongwa owa hapupala neepersenta 75.

Sn. van der Wath okwa ti momudo 1958 omwa tuminwa okommissie yokukonakona eehenokomesho lomalaka ovaMbanhu oo haa longifwa meefikola.

TAALBURO.

Okommissie yokukonakona omalaka oya ti opa pumbiwa okangudukonakoni kelaka - taalbuuro - momalaka aa inaa ehena natango komesho. Oya ulika oshiKwanyama, oshiKwangari, oshiNama noshiHerero. Okangudu aka oke nokukala omutilyane omunamalaka novaMbanhu vavali va palama moinima ei, opo pa monike yo ounamambo - literatuur - momalaka aa.

ngelo, Berlini, osha amekwa lwokuNdowishi-Ushilo, ndele ombinga ei ya ama koutokelo, oya Ndowishi-Utokelo.

Apa otu wete oudjuu oo u li novaNdowishi. Unene oukomune tuu oo. Omwitaveli ita efa okudimbulukwa oluhepo lwovakwao ava meilikano.

OMHITO.

Sn. van der Wath okwa ti ovahongwa mu Rehoboth vomoMatrika oudwali ova li vahembali, ndele vaheimwe ova pita omakonakono. Okwa ti ava vaheimwe aveshe ova ka twikila meeUniversiti mu Republik. Okwa ti yo omhito ei oya yeulukila ovaHerero, ovaWambo, ovaNama novadalelwamo aveshe mu Suidwes.

EUDAFANO LA KUNENE LA NINGWA.

Eudafano lomeva omulonga wa Kunene, pokati kovaPutu na Republik ola ningwa. Otwe linekela omukangha - kanale - domeva otadi ka enda nawa paife. Eric Louw, omukulunhu woinima yo pondje ya Republik osho a ti.

OSHIKUNINO SHOINAMWENYO FINANA.

Omupashukili woushitwe okwa ti oshikunino shoinamwenyo, hano onhele opo oinamwenyo ya amenwa, omo mEtosha, osha finana paife kovatali voinamwenyo. Okwa ti onhele yovaenda poKaukweyo oya lutatupalekwa (ya tamwa mo i dule lutatu apa ya li i fike nale), ndele kashi lidule. Ovanhu vahapu ova haia okutala oinamwenyo.

OMBIBELI AISHE PAIFE MOSHINAMA.

Shi dule etatafele lomido oMbibeli oya lundululilwa moshiNama. Omupastori Kronlein okwa ninga elundululo liwa pashiNama. Omolwoimbide imwe, eTestamenti liKulu ola kala inali nyanyangidwa, kakele kaa li liPe. Pailonga yapastori Kronlein eTestamenti liPe ola holoka diva moshiNama. Paife oMbibeli hangeno ya Londoni noyoilongo oya hovela panyolomufinda wa Kronlein okunya-nyangidifa oMbibeli aishe moshiNama.

DIDILIKA.

Oyonghundana doMukwetu otadi ende nokukola. Nakuhalesha oMukwetu, na ka kanife oinima i noshilonga.

2 2 = 2 Okunambappika

AALESHI TAA NYOLA



EPUKULULO

Ovakwetu novamwatate amushe hamu longo moUshimba, ngenge to pula sha keongalo lambuleni nowa hala okushangela ko, ngenge u na sha to pula ko ile wa hala ombapila yeongalo, ile wa hala eendjovo doye di ufwe, ile wa hala okuyandja oiya-ndjiwa, ino shanga kombada yekutu edina lomufita ile lomuyakuli molupale, osheshi pamwe ota hangika a dja po, opo pe ya umwe. Nena kape na ou te i twala mo nge kee mo mwene.

Onghe luhapu mwa dimbuluka kutya, eembapila deni da kala ko ile inadi uya nokuli fiyo opapa owa li wa teeleele i fike po.

Onghe hano shanga ngaha:

Olupale leongalo.

Itai popi ou u na eenghundafana ile eendjovo doye odo wa hala di ufwe, nena shanga edina lomutaambuli.

Mekutu loye tula mo yo ostante ya 2 1/2c, opo u mone enyamukulo.

Mwa kundwa nawa

komukweni Filippus Shikomba.

Moses Benjamin, Oranjemund, neimbilo 328. *A. K. Malima*, Rehoboth, ota ti: Onda nyanyukwa aluhe, sho tandi lesa oshifo shoMukwetu. Omukwetu, ongoye oto ilikolele shike? Unene nda nyanyukwa sho nda lesa oshifo shaMalitsa, sho nda mono, aayenda yetu ya zi kokule kuSoomi, taye tu etele omakundo omawanawa noku tu tsa omukumo muJesus Kristus. -- Ongoye omukwetu omugundjuka ngoka ino taamba mangan oshifo shoMukwetu, kambadhala ngu shi ikongele, opo tu imonene eliko lya shili. Joh.22:18-21.

Omusitagongalo LEONARD SHONGOLO kuNkongo ote tu nyolele naanaa nkene elangeko lyomubisofi moNiipa lye ya etele wo eyambeko, sho ya mono aayenda yaSuidwes-Afrika. Oyo ya uvithile aakwankala evangelii melaka lyoshinama, noyu uviteko nawa nkene ya popithwa kaayenda lwali. Osho Kalunga ketu a yambekitha oLupandu kaayenda yetu ya simana.

OSHIPONGA SHOMBADILILA

Oukolwe tau etele ovanhu oiponga ihapu ngashi mwa ningwa muMariental. Omulumenhu umwe omuwambo a mona oshiponga shefyo lombadilila. Oye okwa hangika a kolwa. Oikunwa ye mu dula eenghono shili, onghe hano mokuuya monduda a tema olamba. Eshi a tema ngaha olamba, oikutu ya kala ya endjelela monduda, oihuna shili. Onduda aishe oya tambula omundilo nomunhu a pila mo yo sheke. Pa ha li nando omunhu oku mu kwafa, kapa li nande umweumwe. Omushamane Paulus Shihuaku okwe uya tete nokwa kongo ovalumenhu. Ovo ne ve uya po, ova hanga omundilo wa kaluka nale nova kufa po oipeleki aike, nena omunhu a ninga oinimbu a nyonauka po filu. Otwa kala moluhodi linene, onghe hano hai popi nokutya: omukriste, likelelela koi-kunwa, kolelela moMwene, opo tu ka mone ehupifo, eflyo ngenge le tu hange ombadilila, tuha mone eflyo laalushe.

Josef Shafooli.

Wilbard Martin, Windhoek, ota kundu aaleshi yoMukwetu nEps.100.

Kleopas Shoomba, noshu muWindhoek, noohapu dhEps. 96.

Immanuel Nampila, Oranjemund, ota pandula wo Kalunga, shokwe ya tumine omusitagongalo. Oya kwathwa nawanawa mwayihe, ihe oti indile, twaaye ya dhimbwe momagalikano getu, oshoka omutondi te ya langele noonkondo dhe adhihe. Ehol.21:1.

Mikael Bartolomeus, Windhoek, ota nyola ngeyi: Otandi hambelele oMuwa Kalunga omolwa shoka ha ithana oonzi ndhoka dha kana. MuVenduka muka omu na omalengelokalunga, ooskola dsheshasho nodheko-leko, ngashi twa mono ngashingeyi, aamati 13 oya mono esakramenti lyeshasho. Onke ano otandi mu kumike omukumo one mboka mwa shashwa, oMuwa ne mu koleke natango meitaalo. Aaleshi ayeche, otandi mu kundu noohapu muJak.1:19-27.

Isak Ndungula, oShigambo, ota ti: Ethimbo ndika ethimbo lyoondunge, ihe olyo wo ethimbo lyiifundja, lyeyugo, lye dhipago. Ano tu tonateni twaa falwe kugo koshiponga.

Kornelius Ndjeimonopo, Westonaria, ote tu kundifa neendjovo daMt.11:28-30. Otu li po pefimbo loihuna nolekondjo, otwa pumbwa okukonga Jesus, osheshi oye eameno letu alushe. One hamu longo nomwa lolokifwa, oye ote mu pe etulumuko.

Festus Shiimi, Windhoek, ota kundile po aagundjuka ayeche mboka haa gongala mo-shigongi shaagundjuka noohapu dhokaaKol. 3:1-5. Kongeni mbiyaka yokombanda.

Johannes Eliakim, Swakopmund, ota hokolola ngeyi: oshiponga shomulilo sha holoka muSwakopo, kolukanda olukulu kwa pi omagumbo gatatu. Sho sha holoka uusiku, aantu ya adhika ya lala, onke ano megumbo limwe omunona a mono oshiponga oshidhigu sigo a si, nomukulukadhi a li wo popepilela noshiponga, sho a kambadhala okukwatha okaana ke. Aatiligane mboka yi ile okudhima omulilo, oye etele oonakupilwa ohenda shili noye ya topolele iinima iikulu, opo ya kwathwe.

Meme ngoye wa pilwa okamwoye, nookuume mwa pilwa omagumbo geni, oMuwa ne mu pe oonkondo oompe ye na kuthe po iimpwiyu mbika iinene.

Stefanus Hamukuaja, Kaokoveld, ota shivifile ovakwanedimo vaje, kutja meme *Ndeshihala Shailemo* okwa ya koshipangelo muVenduka a pangwe omesho, osheshi iha monoko. Oye mwene a hala oku mu kunda amushe ngaha, osheshi ita dulu oku mu shangela. Oye ota kundu unene ovakwanedimo laye nookaume kaye aveshe.

OMUWAMEME MEITAALO

Omusamane Gideon Epafra gwo-megongalo lyokoNtananga a hulitha oondjenda dhe eti - 2 lya Juli moNandjokwe. Oye okwa li omuwinekelwa megongalo nokwa yakula miilonga yalyo. Nando ina putudhila iilonga yomulongi nenge yomuevangeliste, okwe yi longo mokufalela aantu oohapu dhehupitho.

Ihe sho tu na ombepo yeitaalo, oyo tuu ndjoka yimwe, ongashi kwa nyolwa: Ondi itaala, onkee otandi popi.

2Kor.4:13-18.

Onesimus Filippus.

FINSE SENDINGDRUKKERY
OVAMBOLAND
ONIIPA