

OMUKWETU



No 2

FEBULUALI

1962

OMUENDA A FIMANA.

Joh. 12:1-16.

Ovaenda ohava jakulua neeŋgedi di lili no di lili. Ava va fimana, ove na omajakulo a fimana, ngashi vo va fimana. Ava inava fimana tava jakulua nomajakulo ina fimana.

Jesus oje omuenda a fimana meumbo lovamuainafana. Marta a tambula Jesus meumbo lavo, ndele e mu jakula shili nejakulo la fimana. Marta okua jakula shili Jesus meumbo lavo. Okue mu hafela unene. Okua li e udite onunene uoujapuki ua Kristus. Marta e lijandja ku Jesus shili.

Jesus oje omuenda a fimana ta indile koŋu joje, e uje meumbo lomutima uoje, mu jakula nomuenjo aushe, ue lijandja mu je. Oje a fimana. Okua fimana tuu momuenjo uoje? Efinaneko laje, ou li udite tuu shili nomuenjo aushe. Mu jakula shili nejakulo lohole, ngashi Marta a jakula Jesus shili. Okua fininikua kohole jomomuenjo uaje jokuhola Jesus noku mu jakula. Ou udite tuu momuenjo uoje onunene noujapuki uaje? Omuenda uoje Jesus eshi te uja meumbo lomutima uoje, ove u mu jakule ngashi Marta meumbo lavo, eshi ningila Omukulili uoje.

Tala Luk. 10:38-39. Jesus ta ti: Tala, onda fikama poshivelo nde ohandi koŋgola, ou tau udu ondaka jange, nde ta julula nge, ohandi uja kuje, nde hatu li ouvalelo pamue name. Ehol. 3:20.

Jesus okua li ha kala luhapu meumbo lovamuainafana ava vatatu mu Betania, ova li noukaume ua uana. Jesus a tulumukilua meumbo lavo, osheshi ova li ve hole shili Jesus ngashi Je muene ta ti: "Ou e na oipango jange, nde te i diinine, oje e hole nge; ndele ou e hole nge, je okuholike ku Tate, no ndi mu hole jo, ndele ohandi mu lihololele jo," Joh. 14:21,22,23.

1Joh. 2:5. Aveshe ava, tava diinine eendjovo da Jesus ovo ve nomuenjo ualushesheshi ove li koshi jefiloŋgenda lomohonde ja Kristus, oŋgene ve hole Kristus.

Tambula jo omuenda uoje omuhupifi a fimane meumbo lomutima uoje.

OMUENE TA VAEKUA.

Maria umue uava vavali, ovamuainafana manga va li meumbo la Simon, omufarisai, mu Betania, okua kufa oshanga jaje jomaa-di maua unene, e nedimba liua la njika naua, ndele oku nondilo unene mokulanda. Maria okua vaeka Jesus nomaadi aa e nondilo. Okakende kamue, ngeno hatu ka jeleke oku ka landa noimaliua jefimbo letu £5. 0. 0. Ohole ja Maria jokuhola Omukulili tai

I OMAU MOKATI KIILYA.

Mat. 13: 24-30

Omuwa Jesus okwa yelege oshilongo sha Kalunga niinima yomuuyuni mbuka u lwetike. Mpaka okwe shi yelege nepya moka mwene gwalyo a kunu mo oombuto oombwanawa. Ihe iilya sho ya vala, nena nomau oga holoka wo. Eeno shili, osho Omuwa Kalunga a kunu mepya lya Eden ombuto ombwanawa yomwenyo moshifetha shAdam. Ihe konima omuto-ndadhi okwe ya nokwa kunu mu Adam ombuto yeso.

Omuwa Jesus okwe ya ihe okukununa epya ndyoka lya vala omau nokutya, eso, okuza ku Adam sigo oMoses. Epya ndika lyOmuwa nena olyo egongalo lye kombanda yevi. Ondyoka lya kunwa ombuto ondjapuki, oyo ombinzi yOmukulili gwetu Jesus Kristus. Ihe mepya ndika nomutondadhi oha entamene mo e nefupa enene. Ngele ito kotoka, ohaluka, ongoye eu nando u li megongalo. Ndi shi ou shi shi kutya, omau ihaga kala momalundu, nomiiputa yowala, awe, ohaga kala momapya.

Onkee ano taku tiwa; "Kaleni mu neidhiliko nomwa tonata. Omutondandhi gweni Satana ohe mu kundukidha ongonime hayi ulu, no ta kongo ngoka e mu ninagule."

1 Petr. 5: 8.

T. Heita

holoka moilonga jaje. Eshi a tilila komutue uOmukulili omaadi aa e nondilo i fike apa. Oshilonga sha Maria tashi fimaneke Jesus Kristus. Tala Mat. 26:12-13.

Omukuetu, oua teelulua oshilonga sho-je shokuhola Jesus shi holoke moipafi jovaŋu, sho shi fimanekife Omukulili uoje Jesus Kristus. Ohole joje jokuhola Omukulili i monike mu sho, opo aveshe ava tave shi mono va fimaneke Kalunga nokuhambelela, moku mu itavela. Jakula noijakulifo jome-liko loje, ngashi Maria a ninga. Tala Mat. 5:16. 1Pet. 2: 12.

Omukuetu, fimanekifa Omuene uoje mokukalamuenjo kuoje akushe!
P. Nailenge.





OMUKUETU

Febuluali 1962

AANTU NAAMAYINATHANA.

Jesus Kristus oye ngoka a longo tangotango aantu ya kale ye holathane. Jesus manga ina holoka, kapwa li nando ngoka e shi dhiladhila, aantu nkene ye thike pamwe koshipala sha Kalunga, nomuntu kehe nkene e nesimano tuu ndyoka: oye a shitwa a fe Kalunga. Osho aakriste yotango ya kala noku shi dhimbulula: Kape na nando ngoka ta vulu okwitangela uvalwa komeho gomukwawo. Aayuda naangreka, aaputuki naabarbari mboka ya li nale taa dhinathana, taa tondathana, sho ya ningi aakriste koomwenyo dhawo, oya tameke okusimanekathana.

Muuyuni wongashingeyi hatu tsakaneke olwindji omadhiladhilo ngoka: Omuntu kehe e nokukala e noompito dhi thike pamwe nepopilo li thike pamwe mokati kaantu aakwawo. Onawa, nge tatu shi dhimbulukwa, ekota lyomadhiladhilo ngoka nkoka li li. Oli li muukriste, onkee aakriste otaa tegelelwa, ya kale aapopili yomadhiladhilo ngoka. Onawa wo, ngele tashi dhimbululwa naa naa omadhiladhilo ngaka nkene taga tsakanithwa muukriste amuke, mombepo yohole amuke. Nkoka kwa kambadhala nondjila yimwe yi ili, okwe ya ashike uudhigu uupe u vule mboka wa li nale.

Keshituluko lyoomwenyo otaku holoka iikumitha. Aantu otaa ilongo okudhimbululwa wo maakwawo mboka inaa fathana nayo, uuwanawa owindji. Otaa yambekwa, sho taa ilongo mu shoka aakwawo ye shi ilongo nale. Otaa nyanyukwa wo, sho taa dhimbulula nkene ye nomagano gawo ye ga pewa ku Kalunga, nando inaga fa aluhe ngoka gaakwawo. Oshoka nago otaa vulu okuyambeka okukalathana kwaantu ayehe. Kape na shili ngoka ta pumbwa okusila omukwawo efupa, kehe ngoka a pewa ku Kalunga omagano ngoka taga pumbwa okulongithwa ashike. Kape na wo ngoka ta pumbwa okutula omuntu omukwawo, ngele a yi megameno lya Kalunga gwokombandambanda.



UANIFA EHALO LA KALUNGA

Omukuetu, onaini hano hatu uanifa ehala la Kalunga Tate? Ope novañu vahapu inava shiiva ehala la Kalunga, ñumbi li nokulongua ile okuuanifua. Vahapu ove linekela kutja, omufu ngenge a shashua, je a kolekua, oje omukriste a uana a pua. Ita pumbua sha vali.

Ngenge hatu tale meendjovo edi Mat.7:21, ohatu udu: "Ha keshe ou ta ifana nge Omuene, Omuene, ta i moshilongo shomeulu, ndele oje ou ta longo ehala la Tate meulu."

Eendjovo edi otadi tu dimbulukifa kutja, ehala la Kalunga itali uanifua, ngenge ndi li po omukriste, nda shashua ile nda kolekua. Ehala la Kalunga otali uanifua, ngenge tua efa aishe.

Ehala la Kalunga olo eli: keshe umue e lidilulule shili. Kalunga ota teelee ame na ove tu lidilulule, opo omanjono etu a dimue po.

E. Likumbeinge.

Oshilonga shomukriste muuyuni mbuka osho shomuhanganithi. Aantu mpoka ya kanitha ekwatathano, omukriste ota kambadhala mombepo yohole oku ya hedhitha kumwe. Aantu mpoka ya kanitha einekelathano, omukriste ota pendutha muyo einekelo epe, oshoka oti itaala: oonkondo dha Kalunga tadhi oopaleke mpoka aantu taa nyengwa. Satana oye omutondathanithi, ihe elago, Kalunga e noonkondo, e mu vule. Ohole, ndjoka yi neilongekidho okuhepekwa, otayi longitha oonkondo dha Kalunga dhopombandambanda, onkee otayi sindana.

Kalunga sho a dhiladhila wo omaludhi gaantu ga kale muuyuni mbuka umwe, okwe tu pungululile uyamba wekwatathano ndyoka. Nokudhiginina nokulongitha omagano ngoka Kalunga e ge tu pe, nokwilonga mu shoka aakwetu ye shi na, otatu vulu okutunga nokuhumitha komeho iilongo yetu.

OPAUA OKUKALA

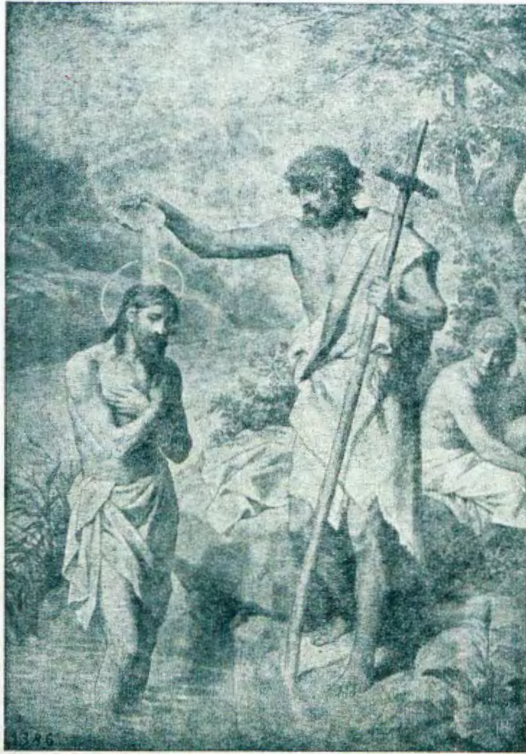
Omuene Jesus okua kufa ovalongua vaje e va londeke komunda ile, ovo Petrus na Jakob na Johannes. Okue va ehenifa popepi noshivele sheulu. Moses na Elia oya holokele pu je moujelele ueulu, nova kundafana pamue naje ondjila jehepeko okua mefjo. Ovahongua va tala oujelele ou nove u hokua shili. Oshipala sha Jesus sha vadima neñono, oikutu osho tuu Jesus a jada oujelele ueulu.

Puilikina eshi Petrus ta popi: Opaua okukala. Tate Kalunga ta holoka jo moshilemo shoujelele, no ta ti: Ou Omona uange, onde mu hokua, mu udeni. Kalunga a hala oku ku shivifila Omona uaje e ku kulile mefjo nomekano. Hano u da eshi Kalunga ta popi muje, no te ku lombuele: Penduka, pashuka! Jesus a hala u penduke u tale kuje umu dimbulukue. Kape na omukuafi umue. Jesus aeke. Puje paua shili okukala, puje pe nomuenjo. Oje a hala oku ku tuala opo ove to njengua okuja ko, okoujelele ueulu, opo to ka mona Jesus no to ka popja jo ngashi Petrus novakuauao, to ti: Eno, apa opaua okukala. Omesho oje nge taa tale Jesus aeke, nena to ti: eno, apa opaua shili okukala. Opoujelele ueulu Kalunga ta popi nOmona uaje. Uda hano! Omona ua Kalunga Jesus Oje oujelele uashili ou tau ku minikile.

Mika Shifula.

Aatumwa aaSoomi yomOwambokavango oya gongala kuKongo eti 9 - 12 lya Januari. Omwa li aatumwa oyendji aakulu naape. Aape oyo mbaka: Ndohotola Jarno Laine (ota ka kala kOnandjokue), omusitagongalo Mikko Ihamäki (kOnguediva), omulongi Mikko Karhumäki (kOnguediva), oofelani aalongi Riitta Honkanen (kOnguediva, Marjatta Elonheimo (kOshigambo), naapangi Marja - Terttu Laitio (kEngela), Kaarina Koponen, Eeva - Liisa Toivakka (kOnandjokue), Anna - Liisa Alho (kOkavango). Omupangeli Elia Uejulu okwa talele po wo oshigongi shaatumwa.

KuKongo oku nongundu yaanona aakwankala ye li moskola. Ongerki oye ya tungile oongulu mbali dhokulala. Omuevangeliste Johannes Nghifindaka okwa tameke oshilonga maakwankala mbaka yokuuzilo.



*Jesus
ta sha-
shwa ku
Johannes.*

OKWAALI OMULUMENTU A TUMWA KU KALUNGA.

Joh. 1:6.

Oye okwa mono etumo lye lya zi kuKalunga, nokwe ya omutumwa gwaKalunga. Kehe gumwe gwomutse oye omutumwa gwaKalunga muuyuni muka. Ngele otwa tumwa kuKalunga, otwa tumwa pautho nopamikalo odhindji. Kalunga oku na edhiladhilo nethikilo lyomwenyo kehe. Otwa gwana okudhiladhila oshinima shi. Aantu ohaa dhiladhila kutya, aantu yamwe oyi iyoololelwa ngashi Mose, Johannes omushashi na Paulus, oyo ye na etumo lyawo li ili ndyoka lya yoololwa kuKalunga. Ihe otse aantu yowala inatu tumwa nelaka limwe kuKalunga. Otse inatu mona nando esiku limwe Kalunga moshihwa sha hwama, nenge elombwelo lya za mokana kaKalunga. Kapu na nando omuyengeli gumwe a yile kutse oku tu lombwela kutya muuyuni ongeyi. Nishewe, katu na omandhindhiliko gontumba nongongandi.

Ihe nando ongawo, otse otwa tumwa kuKalunga, kehe gumwe gwomutse oku na iilonga ye mbyoka e yuuthilwa kuKalunga, ngashi Mose, Johannes na Paulus. Ohatu lundulula omaithano getu ngoka ga dhiladhilwa kuKalunga, sho e tu shiti, no-

kwe tu tumu muuyuni. Ohatu ningi shono tu na oku shi ninga muuyuni mu na Kalunga e na ehalo tu shi longe? Olyo epulo lya simana. Otse inatu gwana okufudha manga inaatu gandja eyamukulo lyuuka, nolyoshili, oshoka otatu ka holoka koshipala sha Kalunga niilonga yetu otayi talwa nkene twe yi longo, noku yi gwanitha, nenge twe yi longo nuuethi. Kehe omwenyo ngoka inagu longo shono gwa li gu noku shi longo opahalo lya Kalunga, ogwo ogu na omupya. Natu tule iilonga yetu, neithano lyetu mevuliko lya Kalunga, note tu ningi iilongitho ye. Oye okwe tu longekidhila eha ewanawa, nkoka te ke tu fala pauthothimbo lye. Otatu vulu tu ethe eithano lyetu muuyuni muka e tatu landula oondjila dhetu, peha lyokulandula oondjila yaKalunga.

Otse wo otwa ithanwa tu faalele ooyakwetu evangeli lyehupitho, unene aakwankala, naamwameme ye li kwAngola ya pumbwa evangeli lyehupitho. Otse na ngoye otatu pumbwa tu li fale ko, oshoka otse otwa tumwa kOmuwa tu ka longe mepya lye.

Manasse H. Hihanguapo.

OMUKUETU, OUA MANGULUKA TUU?

Ounjuni otau pula emanguluko lao. Ove omukuetu oto pula emanguluko peni hano? Ndishi omukriste ota pula emanguluko komushijakano? Jesus Kristus e tu ningilua emanguluko. 1Kor.1:30. Jer.9:23-24.

Eshi shotete shokushingila omuñu kuJesus, osho okuliuda omatimba aje, je e liuete a djuupalelua kokukala kuaje muene nokua djuupaleka jo okukala kuavakua. Ota hovele okulihalela emanguluko.

Omukuetu, efa po ashishe, itashi ku etele sha. Omuñu ita dulu okuja ko nokushuna ko vali kuJesus. Opo ne oudjuu ua uedelua moluashi nookaume ketu tava hovele oku tu limbililua. Okua li va teelela shihapu shomouladi uetu uelidilululo letu. Oudjuu noluhepo la tja ngaha ole uja po ngahelipi? Osheshi omuñu inashi muuanena okulikola edimo lomatimba olo alike. Omatimba aa e uetike ohaa ulike etindi, olo li li meni momuti-ma loufjuululualunde. Fimbo etindi loulunde inali dudua mo, itashi kua fa sha omuñu u kufilue ashike ei hai monika.

Omukuetu, ila kuJesus u mangu-lulue. Ouñjuni oua fa ekuvikivi lefudaela. Leshi Jes.64:4-5. 1Petr.1:7. Eps. 22:7. Jes.53:3.

Paulus Hamukuaja.

EPANDULO OMOLU OSHILONGA SHETUMO!

Ohandi hambelele Kalunga omolu efi-loñgenda laje ongerki jetu oñguaLuther eshi ja tambulua mongongahangano jeengerki adishe eeñguaLuther. Fje ovavambo otu na okuilikana nokuindila ku Tate Kalunga opo ongerki jetu i kule no i kale i nomuenjo omokudulika kehalo la Kalunga onakushiiva aishe fijo okefikilo. Omue ne na hambelue, osheshi e tu tumine oujelele uevangeli!

Johannes M. Shehama.

OTO JAKULA NGAHELIPI OSHILONGA SHETUMO?

Pakutala epulo eli umue oto diladila, ndi jakule ngahelipi oshilonga eshi, osheshi ame ndi he shi omulongi ile omuudifi. Osho ngaho tuu, ndelene omuitaveli ou a itavele Jesus, ota dulu okujakula oshilonga eshi shinene, nande oje omukulupe ile omunjasha, shaashi shaña tuu to kuafa omujakuli ueongalo no to hala okujandja sha nokuuanifa oijandjua joje, nena to longo oshilonga shetumo mokati kovapaani. Jandja nomuenjo uoje aushe! Ilikanena oshilonga shetumo! "Indeni mu ka udife efjo IOmuene fijo ote uja."

Albinus H. Ileni.

OTO PITI TUU MEKONAKONO NDYONO?

Eps.139:23-24.

Ekonakono olyo oshinima hashi tilitha; ngashi tu na mpaka omakonakono gi ili na gi ili. Ongoka a piti mekonakono, oye oha pumbiwa, no ha pewa iilonga a longe, manga ngoka ina pita mekonakono ina pumbiwa, oshoka ina pita.

Oto piti tuu mekonakono?

Mu Novemba omulongi moskola kehe ta konakona aalongwa ye, o-po a adhe omulongwa kehe mpoka e li. Ngoka a piti, ota pewa iilonga a longe.

Omupangi ta konakona aavu pamikithi dhawo, sigo ta adha mpoka pu na omukithi, o-po a wape oku gu kondjitha nomuti ngoka tagu gu opalele.

Omulongi ta koneke aalongwa ye mpoka ye li nomupangi ta koneke uuvu molutu, ihe itaa tseya sha shilwe.

Oto piti tuu mekonakono?

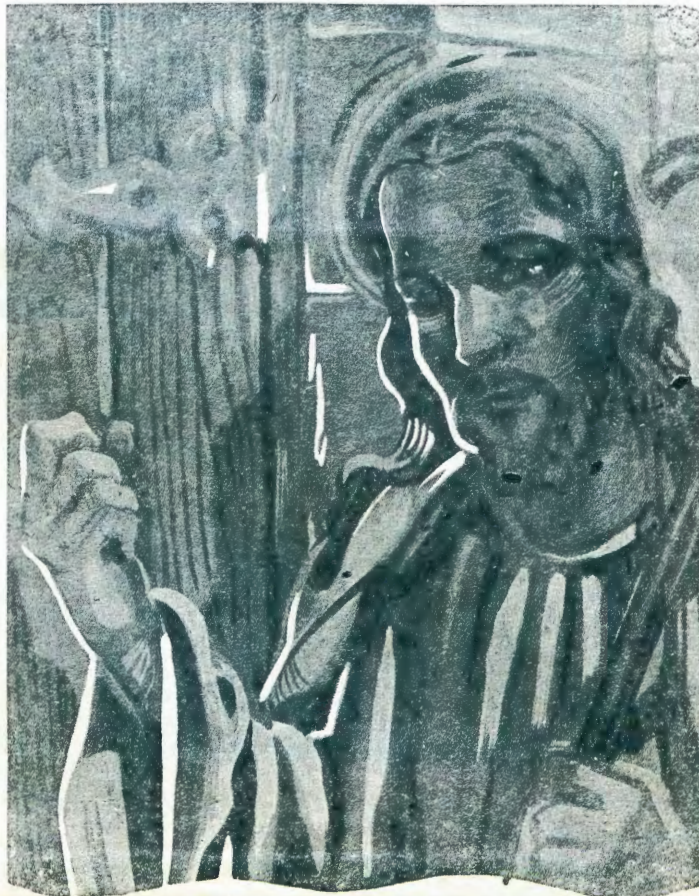
Mekonakono omuntu ta nyengwa okutumbula oshinima e shi shi manga ekonakono inali ya. Ye oku shi shi, ihe omolwuumbanda wekonakono, ite shi tumbula, sho te shi pulwa.

“Konakona ndje, Kalunga, ngu tseye omutima gwandje. Tala ndje, ngu dhimbulule omadhiladhilo gandje.” David a dhimbulula kutya kee li nawa muye mwene.

Ano moku shi koneka David oti indile Kalunga oshinima oshidhigu sha tya ngaaka (ekonakono), Kalunga e mu konakone mpoka e li. Ekonakono ndyoka David te li indile halyo ndyoka twe li popi mooskola no miipangelo, awe.

David okwa hala okukonekwa ku Kalunga ke meni muule womadhiladhilo, muule womwenyo, Ps.26:2; Owe shi dhimbulula wo tuu kutya, Kalunga oye awike ta vulu okukonakona meni lyomuntu? Ekonakono (edhigu) no tali tilitha aantu.

Ethimbo ndika lya fa nokuli! Tu tye olyo ethimbo lyu uka mekonakono, Dan.12:10; Omuwa ta ka konakona uuyuni we. Omuwa ote ya, Ehololo 22:12; Oto piti tuu ekonakono?



“Ila ku Jesus,
a dhime po
Oondjo adhihe,
u hupe wo.”

“Ila ku Jesus,
pulakena
Ewi lyombili,
li zimina.”

Ekonakono enene otali ya!
Omuwate gwopethimbo ndika, oto vulu tuu okwindila Kalunga e ku konakone nena?

Oto vulu mo tuu mekonakono?

Aakriste ngashingeyi ye li po ya fa ya tila ya shololithwa kuuyuni, ye etha ekondjo.

Omuwa ota ti; “Otandi ya mbala, dhiginina shili shono u shi na waa yugwe nando okulye oshishani shoye, Ehol.3:11-12.”

Aantu ya Kalunga, aakriste ya falwafalwa komakuthikuthi gomutondi, ya kuthwa pu Kalunga kawo! Oya tila! No inaa hala esiku ndyoka enene lyomuwa lyekonakono, esiku lyepangulo. Eeno, omuntu ita piti mo mekonakono ndika manga waa na Jesus, Omuna gwa Kalunga meitaalo.

Oye ota ti: “Mwaa na ndje, kamu vulu okulonga sha.” Mboka yaa na Omuna gwa Kalunga, otaa kakama, oshoka kaa na oshitopolelwa mekonakono ndyo.

Ihe mboka ye na Jesus meni moomwenyo dhawo, oye li po ya tegelela esiku ndyoka nenyanyu, andola li thikane mbala ya wape okupewa oondjambi dhawo (Omwenyo gwa aluhe). Ano endelega wi itedhulule. Omuwa Jesus oku li popepi te ya a konakone ye a gandje oondjambi. Ou li tuu meitaalo? Ou li tuu mu Jesus? Mat.24:42.

Ngoye oto pewa ondjambi yini esiku ndyono? Longekidhila omwenyo gwoye mekonakono, Omuwa ote ya.

Stefanus K. Shivolo,
Outjo.

O K A A N D J E T U

EHOKOLOLO LYAHE.

Omusitagongalo Johannes Iitope okwe tu tumina ehokololo ele tali popi omumwana Kleopas Iitope, onguka a mana oondjenda dhe pehulilo lyomumvo -60. Otatu tula mo omadhiladhilo gamwe gahe, unene shokwa tala omathimbo gahugunina gomumwana. Oye ota ti ngeyi:

Kleopas oye omunambili naantu nomuvuliki kaakuluntu. Shokwa pita moskola yaanona, okwa yi kOndibo, moka a longwa komeho. Oye okwa li omunamagano, unene momalaka. Omimvo ndhoka dha landula oskola, a ningi ethimbo ele mUnion, aniwa ita galukile we huka. Ihe oshili. "Omumwana gwomagalikano ogendji ita kana." Kalunga okwe mu kwatele moskola ye, moka a dhimbulula uukatalume we. Osho a galukile kegumbo, nosho a yakula miilonga yetumo moshipangelo ko Kaoko, sigo a galukile ishewe mOwambo, moka a yakula nokukwatha aantu momauvu gawo.

Ihe shokwa kwatwa kuuvu nokwa yi kOnandjokwe, okwa ti: Tate, itandi galuka we. Ondohotola ya kambadhala oku mu kwatha nokutanda, ihe inashi kwatha sha, eso lye mu tegelele.

Efudhitho lyetu pokusa kwe olyo ndika, oye igandja shili ku Kalunga. Nokwa tumbula nokutumbulula pokusa kwe overse ndjika Joh.3:16, ... opo shaa ngoka e mu itaale, kaa kane, ihe a mone omwenyo gwa aluhe. Okwi itaala edhimopo lyoondjo nokwa hempulula: Nena ondi na ombili mOmukulili gwandje. Itandi mu etha we. Otandi yi kegumbo, inandi hala we muuyuni muka..... Osho e tu thigi po manga.



MALITSA

1. Do. Mark.4:26-29. Joh.11:28-44.
2. V. 1Kor.2:1-5. Joh.11:45-54.
3. Sa. Hebr.6:1-8. Joh.11:55-12:11.
4. S. **OMPITO YEIDHILIKO.**
1Kor.13:1-13. Luk.18:31-43.
1Mos.13:7-18.
5. M. Luk.13:31-35. Mark.11:11-14,20-26.
6. D. Luk.9:18-23. Mark.11:15-19.
7. W. Mat.6:16-21. Mark.11:27-33.
8. Do. Luk.9:57-62. Mark.12:1-12.
9. V. Jes.58:5-12. Mark.12:13-17.
10. Sa. Mark.9:14-29. Mark.12:18-27.
11. S. **ESIKU LYEITEDHULULO.**
2Kor.6:1-10. Mat.4:1-11.
Job 1:1-21.
12. M. Jak.4:1-10. Mark.12:28-44.
13. D. Jak.1:13-18. Mark.13:1-13.
14. W. Hebr.4:14-16. Mark.13:14-23.
15. Do. Hebr.12:1-7. Mark.13:24-32.
16. V. Mat.16:21-28. Mark.13:33-37.
17. Sa. Mat.12:38-42. Joh.12:20-26.
18. S. **Os. 2 yomEidhiliko.**
1Tess.4:1-7. Mat.15:21-28.
1Mos.12:1-4a.
19. M. Hebr.11:8-12,17-19. Joh.12:34-36.
20. D. Iil.5:17-29. Joh.12:37-43.
21. W. Mat.21:28-32. Joh.12:44-50.
22. Do. Jer.20:7-13. Joh.13:1-11.
23. V. Hebr.5:4-10. Joh.13:12-20.
24. Sa. Mat.21:33-46. Joh.13:21-30.
25. S. **Os. 3 yomEidhiliko.**
Ef.5:1-9. Luk.11:14-28.
Jer.26:1-15.
26. M. 1Petr.1:13-21. Joh.13:36-38.
27. D. Mark.6:7-13. Joh.14:1-7.
28. W. Luk.22:24-30. Joh.14:8-14.
29. Do. Luk.4:38-44. Joh.14:15-21.
30. V. 1Kor.4:9-16. Joh.14:22-26.
31. Sa. Jes.49:1-6. Joh.14:27-31.

ELIKO LYA ALUHE.

Okambo okawanawa shili, "Elika lya aluhe" hoka taka opalele omugundjuka kehe, oke li ngashingeyi mOstora yomambo mOniipa.

Okambo oka nyolwa pamukalo omuwanawa. Oke na oshindji tashi pumbiwa kaagundjuka yopethimbo lyongashingeyi.

Omukriste kehe, a hala a likole eliko lya aluhe ni ilandele okambo ho.

Okambo oka gwana nawa mondjato yoye ko kake na ndilo, oosenda hamano adhike (6c).

Omugundjuka, ino pitililwa po kElika lya aluhe. Li ilandela.

Mbo mu li kUushimba, mbesteleni "Elika lya aluhe" kOstora yomambo Oniipa, Pk. Ondangua, S.W.A. Inamu dhimbwa iimaliwa yopoosa.

ENONGELO NOSHIGWANA.

Otwa tseya nawa aanona yetu otaa kala mooskola, notaa nongekwa iinima oyindji: oohapu dha Kalunga, omiyaalu, uukalinawa, okutseya evi, nuukwatya wuuntshitwe nosho tuu.

Otaa nongekwa wo omalaka omape: oshimbulu noshiingilisa (Engels), omalaka gepangelo. Na shoka shi vule ayihe: oohapu dha Kalunga, nokulesha nokunyola. Nenge tu tumbule netumbulo limwe tu tye: aanona otaa humu komeho. Aanona oyo oshigwana oshipe shokomeho. Ooskola otadhi kwatha aakuluntu meputudho lyaanona ya ninge oshigwana oshiwanawa komeho.

Ihe aanona aawambo ayehe itaa mono ompito okuya moskola. Ooskola nokuli itadhi gwana nando dhi li po odhindji, onke ano twa pumbwa ooskola oompe naalongi aape. Epangelo olya mona nga oluhepo lwetu. Otatu tegelele tu pewe ooskola oompe omumvo nguka. Pamwe otatu mono numvo nokuli iinima iipe.

Ihe ekwatho ewanawa li vule agehe olyo ndika. Tu ikwatheni otse yene. Aakuluntu ye nokutala aanona ya mone ompito yokuya koskola. Aanona naa kambadhale okukala moskola nuudhiginini, naalongi ayehe wo. Oshinima shika oshi noshilonga. Tu gongeleni wo iimaliwa yokutungitha oongulu dhooskola naatungi yoongulu oompe. Itashi vulika okutegelela ekwatho, ngele otse yene inatu hala okulonga.

Okutunga oongulu taku pula iilonga oyindi. Neputudho wo otali pula oshindji shili. Tu kaleni ano momagalikano omolwoshinima shika. 1Tim. 6:18-19; 5Mos.15:10; Jak.2:17.

LONGA NOKUGALIKANA.

Festus A. Iileka.

PRAKTIESE NDONGA

Opu na oyendji ya tala kutya omambo kage na oshilonga. Shi dhimbwa.

Embo ndika oto li pumbwa shili, unene mbo hamu longo pamwe naatiligane.

Embo ndika opo li li natango. Yamwe oye shi aniwa lya pwa po. Endelega u lande lyouye. Ohali gu 85c. (8/6).

Hans D. Namuhuya.

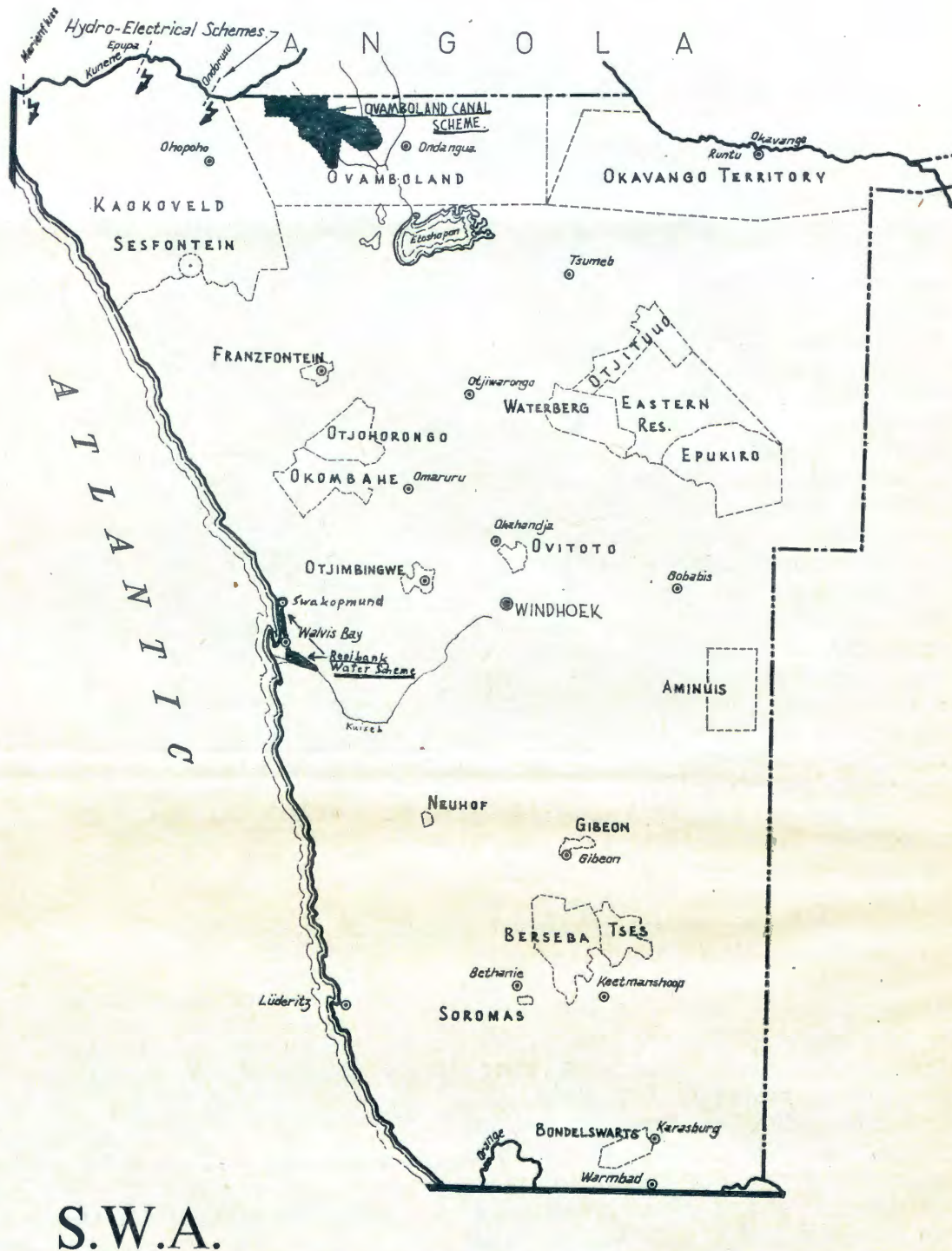
ELUDNULUKO MOKULONG' OMAPYA.

Omuntu gwtango sho a yono, Kalunga okwe mu kutha uulenga nuuhona, nde ta ti: "Iikulya yoye ou noku yi lya noma zigudhe gokoshipala...." Aantu yi indjipala no ya tameke okulonga iilonga yi ili no yi ili moka taa hupile mo.

Kombinga yetu aaWambo otwa adha ashike onkatu ndjoka yokuhupa miimuna nomomanya getu. Ngele inatu lima, omandjandja ogo nga tage ku lombwele sho taga gono. Ondjala opaandjeni inapa tsuwa. Otwa kala ne tatu hupu nuudhigu mokulong' omapya. "Lye end' ongula olyo lya tool' ohima", oohungi pethimbo lyoondima katu dhi shi we. Omukwanyama gwonale okwa tile: "Omushamane Li uokOndjidi kee hole hungi ihupi, sha p' oto hungile, nde ne, ove mongula u kofelele." Oto ningi nga ngoy' opo to kotha po, uutemo kwelenge ndje, ngoy' othingo ongo poima pu nemanya wa yemata. Enkuma kaku kalwa ko. U penduk' omutenya malwa manene, sho nga tagu ka tsa, ai, pombunda opwa fa ashike pwa tem' omulilo. Enyenyeto ihali pu, ngoy' oto yi nga.

Tala ne u tale sho hatu longitha okambele nga aniw' etemo, uudhigulela. Ope na okanku ketemo okankisha nga kowala, lyo okombandambanda tali yaga. Sho wa limi po, to kutha mang' okati u li yage sho lya kakatela evi. Sho to zi ne mpono, o, iihuna shili, ongalamwithi ya Shiteni ito vulu oku yi longitha. Nge wa lolo shil' okantaku, aanona ihwepo otaa li nga, ih' ookuku, awoo, mwa pu thilu. Ombinzi yomuthigona kay' ota, ongula sho taku shi atuhe okuutemo nga. Papula ne u tale ongwena, ha to tala nen' ombangula sho tii pand' omiti, omanyangwa gowala. Sho to papula iinyokokulu otayi inana ngoy' oto ningi nga. Yanga ne u tale, ha, ela, ombunda inayi hala. Okatemo mpa nga ka gumo, ngoye to kambadhala u tule mo okapa. Hatu vundu, tatu limi nde nde tatu limununa. Omauhoho, ino pula, ohaga pumba ne. Omunangombe oye nga omu niilya. Ngiika otwe shi dhimbulula nga kutya hanene to adha omunangombe kee niilya neng' omu niilya kee noongombe, ihayi thigathana po mbyok' iyali mbyo. Omolwashike? O, uuhoho nge kau mo mepya ou shi, otali gandja iilya nande u hala to longo? Awoo, osima yowala. Uuhoho umwe mbu ihau zi miimuna ndi shi, ohatu u fike po ngashi ihenguti niyagaya ayihe. Inashi pumbiwa tu yi fike, oshoka nayo uuhoho nguukwawo. Ohend' onene shili nge to tala iilonga yetu. Aantu aanilonga nge katu niilongitho. Ayihe oya nika nga omutenya.

O, uuyuni ngashingeyi wa nik' ongolo, kehe gumwe oshipululo nga ta pula, kehe gum' okwa kutha ko oongaku koompadhi. Ngoye owa enda omahal' ogendji moWambo pethimbo lyoondima, oyangapi taa longith' omake? Yangapi taa meneka oku ka lima? Oomene dha hula, kehe gumwe oshipululo ta pula. Sho shi ile oyendji otaa ti: "Ai taa shundul' omapya mba, omwa ti iipululo." Oshipululo sha ka tile sha ka tile. Hasho, eshunduko shila mepy' uuhoho kau mo, kamentu ka meme. Iipululo sho ye ya, oye



tu yakula moomene dhongula. Ngu ta limi netemo nando na meneke, oshilwa she otashi ka vulika nga koshomufuko gokankondi. Ngoye nge ou noshipululo oho penduka kwa yela ishewe. To dhi mposonona, ito pumbwa oomene ndho. Nge nda landa oshipululo ondi wete nda adha, nda kutuka kaku na we, nda adha uuhonalela. Ngel' ondi niimaliwa oyindji, shil' otandi landa oshihauto shandje, ngele nda land' iyali oshipululo ondi na shoku lim' eypa lyandje!

Sho twa tala, moWambo omu naantu ye niipululo yo kaa niimuna yokupululitha. Ope na nga oonani shaa dha yi kohambo itadhi zi ko we, shil' oombanza tadhi zi ko. Uusino owa pumba pomathimbo nga. Otu na ne okutala kombinga yiipululo ihayi

pumbwa iinamwenyo mokuhilwa. Oshipululo shi shi kudhiladhilwa no shi shi okulongithwa pamikalo odhindji, osho mbakumbaku. Omumentu nguno mbakumbaku oku noonkondo kaku na we. Sho e li po oha longo iilonga oyindji noyomaludhi ogendjigendji. Ye mwene kee na ndilo ngashi oshihauto oshipe, ye ishewe ibi ilondo kuteka.

Komeho otatu ka tsikila oku mu hokololela kombinga yambakumbaku, mpo ha adhika, nkene to mu mono na shoka ha longo.

Otadhi tsikilwa moshifo tashi landula. Kambadhala u dhi ipungulile.

Ambrosius P. Amutenya,
Okahandja.

OSHILONGO SHA S.W.A.

Aantu yomoshilongo:

AaMbantu	427,980	ookleurling	23,928
Aatiligane	73,154	AaAsia	2
		Kumwe	525,064

Uunene oohektar 82,290,860 nenge 317,726 vk. myl.

OMBUGA:

1/11	shiilongo	yaavalelwamo
1/3	shiilongo	yaatiligane

Iilongo yaavalelwamo:

Edhina	Uunene oohektar	Aakalimo
Kaokoveld	5,529,474	Herero, Ovambo, Ovattjimba
Ovamboland	4,200,000	Ovambo
Okavango	3,688,051	Kuangari
Otjituuo	411,024	Herero
Waterberg Oos	475,550	Herero
Oostelike Res.	1,275,997	Herero
		Ovambandero
Epukiro	997,840	Herero
Fransfontein	57,188	Nama, Damara
Otjohorong	360,000	Herero
Okombahe	433,164	Damara
Okahandja (Ovitoto)	61,194	Herero, Damara
Otjimbingwe	91,021	Herero, Damara
Aminuis	554,800	Herero
Neuhof	20,500	Nama
Krantzplatz (Gibeon)	39,192	Nama
Berseba	596,992	Nama
Tses	254,587	Herero, Nama
Soromaas	23,573	Nama
Bondelswartz	174,505	Nama
Warmbad	14,500	Nama
Caprivi (Oos en Wes)	1,165,500	
	20,424,652	

(Moshifo shEhumokomeho mu Januarie 1962)

OVATALELIPO KETOSHA.

Okangudu oka jandja enjamukulo lomefijafano mokukonga omualu uovatalelipo veputu loinamueujo mOkashana voneudo.

Ovafiafani ova li ve nokutenge-neka: ovañu vatjangapi va talela po Etoshapanne, vangapi va ja ku Namutoni na vangapi va ile kOkakuejo momudo ou.

Omanjamukulo oo aa:

Ovaenda vokEtosha	10,700
kOkakuejo	4,700
kuNamutoni	6,000

Aveshe ova ja ko omoluokutala olushandja luoinamuenjo.

OMIMVO OMIDHIGU MEHISTORI LYOWAMBO.

Enota nondjala oya dhigupaleke olwindji okukala kwaaWambo. Una kwa li uudhigu uunene, aantu oyendji oya yi kuAngola. Aantu oyendji oya sile mondjala no menota omathimbo ga tya ngaka. Momahokololo omakulu gaatumwa otamu monika naa naa, omimvo dhini po omidhigu unene. Aapangeli aatiligane sho ye ya moshilongo, oya kambadhala pankondo dhawo okukwatha aantu momaluhepo ga tya ngaka, nokweta kUushimba iikuulya. Otatu tala mpaka shoka sha hokololwa:

1872-75. Oluteni.

1878-79. Oluteni neteyo eshona.

1879 Mu Mai ondjala, aantu oyendji oye ya koongulu dhutummo okukonga ekwatho.

1880 Oluteni nondjala ondhigu.

1897 Ondjala onene nuuvu.

1900-03 Ondjala kOniipa.

1904-05 Ondjala kOniipa, kOlukonda no kOndangua.

1907-08 Oluteni kOngandjera.

1908 Aantu omayuvi oya sile mondjala, epangelo lyaaNdouishi olye eta ootoni 40 dhempungu no dholwishi.

1913 Ondjala, epangelo olye eta iikuulya.

1915 Aantu omayuvi oya sa, epangelo olya tumu iikuulya.

1920 Oluteni kUukwambi.

1924 Oluteni, epangelo olye eta iikuulya.

1927-30 Oluteni, epangelo olye eta ooshako 21 000 dhempungu. Iimuna oyindji oya si.

1933 Omumvo omudhigu ishewe, unene kiilongo yimwe.

1940-41 Oluteni kOndonga.

1946 Oluteni nondjala.

1948 Eteyo eshona kUukwanyama.

1952-53 Oluteni, eteyo eshona.

1957-60 Opendji inapu teywa nando. Moshilongo mwa etelwa epungu ooshako 150 000. Iimuna oyindji oya si. Aantu oya mana iilya niimaliwa mbyoka ye yi ipungulile omimvo odhindji.

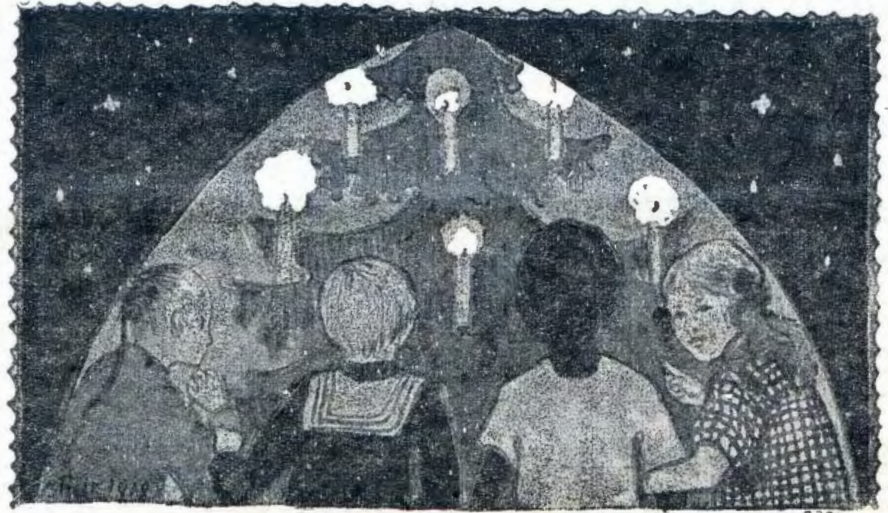
Epangelo olye shi dhimbulula, nkene pe nokulongwa oondama aantu niimuna yaa sile menota. Opwa tamakwa nokuli omunkanka (okanali) omunene, ongoka tagu vulu okwetela mOwambo omeya gomulonga gwa Kunene.

OSHIKOLOLO SHAAGUNDJUKA

MOONDJENDA.

1. *Omuwa, ongoy' wa simana
kombanda yev' alihe ngaa,
Ongoye sho wa enditha
omumwoye no we mu thikitha.*
2. *Nda hala ndi ku tangele
ohenda yoy' onene ndjo.
Nayo ongoy' wa sindi ndje,
nayo ongoye' u hole ndje.*
3. *Natango tii ku imbile,
Ongoye sho wa shigi ndje.
Pungoye tandi nyanyukwa,
pungoye ine hepa sha.*
4. *Tu kwatha u tu wilike
kegumbo u tu thikithe.
Tu koleka aankundi mpa,
megulu lyoye faalela.*

*Ewi mEhangano 52.
Teopolina Jona.*



OUNJIKA VANINI VA KALUNGA.

Mehokololo eli ohatu pumbua oukadona vanini 4 va djala eehema ditoka, ve na eenjika momake avo. Eenjika inadi tema manga. Omuengeli umue e na jo onjika meke laje. Onjika jaje ja tema. Ongudu jokuimba. Omuhokololi.

Ongudu jokuimba. 296:1

- Omuholololi:** Mounjuni omu nomulaulu. Omuendanandjila ota ende alushe momudile uomulaulu.
- Omuengeli:** Oujelele tau minikile momulaulu. Ou ta landula nge ita ende momulaulu, ndelene ota kala e noujelele uomuenjo. Osheshi osho Kalunga kua li e hole ounjuni, oje a jandja omona uaje euifa, opo keshe ou, te mu itavele, a ha kane, ndelene a mone omuenjo ua alushe.

Oukadona vanini tava imbi 103:4

- Ongudu jokuimba:** (tai hokolola oshita) Jesus oje oujelele ua uana. Mokuenda naje ua fa u li momutenjelele. Oje ote ku ifana u kale okanjika kaje u minikile mounjuni omu mu jadi omulaulu.
- Okakadona I:** (otaka i komuengeli ou ta tema okanjika ke li meke lako.)
- Omuengeli:** Onje oujelele uounjuni. No ngashi onjika jomaadi itai temua i tulue koshi jeholo, ahoue, okoshikuatelo, no tai minikile aveshe ve li meumbo.
- Okakadona II:** taka ningi ngashi nokotete.
- Omuengeli:** Paife omua ninga oujelele uOmuene. Endeni ongovana voujelele.
- Okakadona III:** taka i jo komuengeli ngashi ovo va tetekela.
- Omuengeli:** Onje amushe ovana voujelele.
- Okakadona IV:** taka ningi ngashi ovo ve ka tetekela.
- Omuengeli:** Onda ku tula po u kale oujelele uovapaani, ehupifo lange opo li hange fijo okomahulilo ounjuni.

Ongundu jokuimba: 72 mu Imbileni...

- Okakadona I:** Jesus te tu lombuele: Kaleni eenjika doiuana jeni. Kendabaleni mu jelele ava ve li momulaulu nokupukulula ava va puka. Diladila ngenge pe na tuu ou ue mu minikila.

OSHIKOLOLO SHEGUMBO



Omboka taa pumbwa ya falelwe uyele wevangeli.

- Okakadona II:** Nge ove ua mona omuenjo ua alushe mOmukulili, ninga jo onjika ojo tai minikile momulaulu fijo ovañu aveshe va uda evangeli.
- Okakadona III:** Omukriste ove ua kulilua u na Jesus. Oto dulu tuu okunjakukua mohole jaje fimbo ovakueni tava juka mekano? Penduka, ove u va uilike va je kOmuene Jesus.
- Okakadona IV:** Jesus, Omuene, fila nge oñgenda opo ame jo ndi dule okuminikila mokati kovapaani ongonjika joje.
- Ongudu jokuholola oshita:** Ounjika vanini va Kalunga otava minikile naua nehafo. Opo pe na ounjika va Kalunga omulaulu otava kandulua po. Ndelene.. (Olamba tai dimua.)
- Okakadona I:** Paife ope na vali omulaulu. Okanjika kange okanini, kake noshilonga nokuli. (Otaka dimi po.)
- Okakadona II:** Okanjika ka kaume oka dima. Omolua shike hai minikile natango? (Otaka dimi po jo.)
- Okakadona III:** Paife nda loloka unene. Kandi neñgono okuminikila vali. Nai dime po ashike okanjika kange. (Otaka dimi po.)
- Okakadona IV:** Okanjika kange ke noshilonga sha shike eshi ounjika vakua uo va dima? (Otaka dimi po.)
- Omuholololi:** Omolua shike pe nomulaulu u fike apa? Omolua shike kape na okanjika nande kamue ka minikile opo ndi mone ondjila tai tuala kOmuene Jesus? Ñgi uete sha. Kandi mu uete. Tate omuholike, kuafe nge ndi mone oka-ujelele nande okanini.
- Ongudu jokuimba: 411:1,2** no nenge tai tameke overse oñi 3 tai imbi kanini fijo ondaka itai udika vali.
- Omuengeli:** Ndele onje tamu peua eeñgono Oñepo Ijapuki nenge tai uja munje. Onje otamu ka ninga eendombuedi dange mu Jerusalem nomu Judea ashishe nomu Samaria no fijo kebulilo lounjuni. Onde uja okuekela omudilo kombanda jedu. Nde onda hala shike? Ngeno ua tema!

Ongudu jokuimba: 251:2

Fimbo ongundu tai imbi, oukadona tava i vali komuengeli opo eenjika davo di temue vali.

Aveshe tava imbi 49 mu Imbileni...

UUDHIGU MEPUTUDHO.

Shoka tashi eta uudhigu meputudho osho uukwaaneuvathano. Shika tashi holoka uuna gumwe gwomaa-putudhi a pwile muuhethi. Omusa omunene pokati komusamane nomukulukadhi tagu thitike ondjila yoku-adha elalakano lyeputudho. Egumbo lya tya ngaaka tali humbata omutenge gu nompunda yomamanya kombinga onkwawo.

Muuyuni mu nomagumbo ogendji gi ili nogi ili. Ogo gu udhilila aanona aavalwa naalelwa. Momagumbo gamwe eputudho lya dhigininwa shili kaatungigumbo ayehe. Tatu adha mu gamwe aakuluntu ayehe aahethi no ya lyatelwa menono kaaputudhwa yawo, manga mu gamwe mu nomutenge twe gu popi nale. Shika tashi ti: Gumwe te ende nondjila yu ukilila meputudho nomukwawo a tsu mo ye. Pamukalo nguka oyendji yi iteka noondjokana dha teka wo olwindji.

Evathano megumbo tali ti ngeyi: Omunona a tseye nokuitaala kutya, o-hole ya yina oyo ya he wo. Shoka te shi pewa ku yina, ote shi pewa wo ku he. Mpoka a geelwa ku yina, he okwe mu geele wo. Ashihe tashi mu zile ku yina, otashi mu zile wo ku he; nosho tuu aalelwa.

Uukwazimo woshiwambo wa yono nayi nowa nkundipaleke oshilonga oshivanawa sheputudho. Aakiintu yi ihilile oyana pamikalo dha sha naasamane yi ikalele ya mutikwa omakana. Na uuna uuwinayi tau lundu megumbo, aasamane taa vululukwa mevito ndi: "Ndi ya ninge shike aantu yaantu!"- Tala, oshili oyo tuu mboka ezimo lyoye; we ya pewa ku Kalunga u ya putudhe no u ya paluthe noku ya zaleka. Ngele ino shi ninga, nena wa etha oshinakugwanithwa shoye nowa fumvike ngeyi oshitalenti we shi pewa.

"Uumbanda kau mo mohole, oshoka ohole otayi tidha po uumbanda."

L. Mp.





EHANAUNO LA JERUSALEM

Okua njamukulua kuyo nomatukano noku mu umba oikuti. Ovañu vahapu vomoshilando ova hetekela okulihupifa, ove livaka mo, va je kombinga jovatondi vavo. Ndele aveshe ava Titus o kue va diinina nolukeno lunene shili. Ndele ava va ninga eeñguate momaluoodi, ova valelua komushijakano popepi noshilando. Pahokololo la Josefus ova li vahapu, kapua li vali oñele jokudika omishijakano dimue nokuli, nomiti dokudipaela oda puile po. Osha li oihuna shili! Ovañu vomoshilando eshi moluehandu ova fiminika Pontius Pilatus, Kristus a valelua komushijakano. Okoshilando tuu osho Omuene uomuenjo a hulifila ouenda uaje. Omunalukeno Titus okua itavela ehandu li fike apa, osheshi okua hala okutilifa ovakondekua ava vakukutu. Ndele kapua li pe na nande sha, osho sha pupaleka emuenjo dovajuda, handjala, hamakumaido a Titus okuhupifa oshilando novañu va sho notembei. Ove mu njamukula ashike noku mu sheka nokudina omakumaido aje nova ti: Okufja oku dule okulijandja,

nokulitumba ove linekela vati ekuafola Kalunga, nande ova li ve mu dina nai.

Hano ovajuda eshi va anja natanngo mokukondjifa ovaroma, Titus okua kondekifa oshilando noku shi tungila eehote. Ngaha eendjovo da Kristus oda uanifua pashitjalela. Oshilando osha fininikua kondjala pamue nomaluhepo mahapu. Ovañu omajovi nomajovi va dinda kondjala, otava endaenda momapandaanda ve limone-ne, eshi tava li. Ovakolokoshi va djala omauta, ova pumina momaumbo ovañu noku hakana po oikulja aishe. Ngenge va mono omuñu a fa a holeka po oikulja imue, otave mu denge nokumu hepeka, fijo ote i eta aishe poujelele. Ooina noohe ova njeka ovana vavo nokapambu ka huunina kokakulja, ovana ova njeka jo oohe noovamuaina. Vahapu ova hetekela okuja oñapo oluhepo eli nokuliameka kovaroma. Ndele ovakuita ovaroma ove va tanda momadimo, ova li ve shii pamue va pona nande oimaliua joingoli i li momadimo avo.

Vahapu ova kendabala okupoleka ondjala nomikalo dihe shi kutumbulua. Omukulukadi omujamba umue omunedina, mokulikalela okua toma omona nde te mu pake po, te mu li po etata, etata limue te li pe ovakuaita ovo va fja ondjala. Eendjila nomapandaanda aeshe a li e jadi omidimba. Pokati kefikuku eti 14 la April nefiku lotete la Juli omidimba edi da tutua, da pita moshivelo shimue, oda li di fike 115,880, dikua di dule 600,000 oda umbilua pondje joluumbo loshilando. Oluhepo lunene lu fike apa, ola kuata omuenjo ua Titus nde ta jelula omaoko aje luokeulu a ti, ke na etimba loluhepo eli moukolokoshi ou, oshilando eshi shi na okunangalua nomaluhepo e fike apa. Ohote ja Antonio eshi ja hanaunua po nokukondja oluoodi lidjuu, ovaroma ova tondokela vali otembeli jovene ei ja shija keendundu nokeehote. Moku shi ninga, okujandja omajambo nomalongelokalunga efiku keshe, okua hula.

(Taku tuikilua)

OUNJUNI OTAU TONGO SHIKE

Omufitaongalo Kleopas Dumeni a ja kuAmerika.

Omaongalo ovakuaLuther vokuAmerika a ifana ovauiliki joshilonga shomovanjasha va talele po ovanjasha vokuAmerika, va ninge jo oshiongalele shavo, omo tava kundafana oshilonga shomovanjasha. Ehangano lovakuaLuther otali futu ondjila ei ile okudja mu Afrika nokuja ku New York. Omusamane Dumeni ota kala ko eehani dimue. Epangelongerki ola tokola oje a tambule oshisho shoshilonga shomovanjasha mongerki aishe.

PATER P. KRESS A MANA ONDJENDA.

Pater P. Kress uokOshikuku ou a li a longa eedula di dule omilongo itatu mOvambo nokujakula ovavambo paeñgedi dihapu, Kalunga e mu ifana, a dje mo mokati ketu eti 30 muDesemba. Okua li omunambili nomudiinini, ngashi hatu mu dimbulukua jo, eshi e tu popifa moshongalele shokEngela. Oje a li jo omuleshi uoshifo shOmukuetu, e shi konakona alushe naua. Kalunga na hekeleke ovo tave mu djuulukua, ne tu pe jo atushe oudiinini okujakula ovakuetu.

OILONGO JA EUROPA OTAI HANGANA.

Oilongo ja Europa otai kundafana paife, i hovele okulanda nokulandifa oinima pokati koilongo, pa ha kale vali eeveta doku shi keelela. Oku na nokuli omahangano a tja ngaha avalu, limue li noilongo 6, likuao li na 7. Ndelene paife omahangano aa e li po pokuja mumue vali. Oilongo 15 jomuAfrika otai i mo kashimba jo, unene oilongo ojo ja pangelua nale kovafransa, ndelene paife tai lipangele.

OIPONGA JOLUMI.

Ovañu omajovi atatu ile ane ova fja ku Peru ku Suid-Amerika olumi eshi le va uila, la dja keemunda da kula pamue nomamanja mahapu.

NIGERIA.

Epangelo la Nigeria ola lombuela ovatumua vongerki jopareformi ja Suid-Afrika, va dje mo divadiva moshilongo. Ovatumua ovo ova jandja oshilonga momake omatumo makuao taa tuikile oshilonga fijo tave shi itavelua. OvaSuid-Afrika ova li va longa eedula omilongo itano kuNigeria. Ova tula Ombibeli melaka la Tiv, ova dika eenasaresa neefikola neeseminari n.sh.t. Okua holoka jo ongerki i novanaisho vahapu ovadaleluamo.

OMASHINA OTAA MANA PO OILONGA.

OvaAmerika eemiljoni ne inava mona oilonga meehani edi, osheshi omashina otaa longo oilonga ojo ja longua nale kovañu. Unene ovo inava ja meefikola no inava longua okulonga komashina, otava njengua okulimonena oilonga i va palule. Paife ndi shi pe nomashina oo taa vala omivalu didju, otaa longo oilonga jovañu omajovi mokafimbo kaniñgoli. KuAmerika oku nomashina a tja ngaha omajovi omugoji. Eefabrika dokutunga omashina nado otadi longifa omashina, ovañu ovo tava longo mo, ovanini.

KONGO.

Omukuluñu uoshilongo sha Kantanga, Tshombe, nomukuluñu uoshilongo ashishe sha Kongo, Adoula, ova udafana va longe kumue. Omukuluñu omutitatu, Gizenga, ou a li ta pangele oushilo uoshilongo, ova tokola, ve mu kufe oukuluñu uaje, osheshi a tua ondubo, ina hala okulonga pamue navo.

GUINEA.

Omukuluñu uoshilongo Sékou Touré, ou a diladilua ku vahapu, kutja oje omukomuni, okua taataa omutumua uoshilongo sha Rusia mu Guinea, ou eshi a kendabala okupendufa ondubo, epangelo li lunduluke. Ovarusia ova tuma omusamane Mikojan okupanga ombili.

EENGERKI OTADI KUMAIDA OMAPANGELO.

Oshiongalele sheengerki sha ongala kuDelhi kuIndia, osha hulifua moshivike oshitivali sha Desemba. Omua li ovatumua veengerki 198, mu odo mu noiljo eemiljoni 350.

Oshiongalele osha kumaida omapangelo aeshe novañu aveshe, va ha longekide oita, nde va ha tilifafane nomalongekido oikondjifo. Omapangelo naa kundafane ñumbi e nokuninipaleka oikondjifo, unene ojo jeeñgono da atomi.

Omuuilikongerki omukuaLuther uokuAmerika, Doktor Franklin Fry okua hoololua a kale omuuilikindjovo ueuilikongudu lehangano leengerki (World Council of Churches).

ONGERKI JETUMO LA HERMANNsburg, ojo je likalela efimbo lile, paife oja i mumue neengerki eeñguaLuther dikua doushilombuuañu. Ongerki ojo ja holoka koshilonga shomatumo oilongo ine, oi na paife oiljo i dule omajovi efele.

OSTUDIO (ongulu jokulongekidila oradio eendaka) ku Roodepoort, popepi na Johannesburg, oja li i noshivilo shehovelifo muDesemba. Omusamane Pakendorf, omuuilikindjovo uoshiongalele shovakuaLuther shomuSuid-Afrika (CCLF) nomusamane Pfitzinger, omuuiliki uongudulongekido jostudio, ova popifa ovaenda. Omusamane Kempff okua shika okahumba oko Ongerki jOvambokavango je ka jandja kostudio. Ovaenda vahapu ova eta omakundo avo.

OSHOONGALELENGERKI SHOVAROMA.

Omupapa okua shiivifa mepopifo laje lomudo mupe, kutja a hala okushiva oshiongalele shongerki aishe neudo. Oshoongalelengerki shavo shinene sha huuninua osha ningua o mido 1869-1870, ndelene sha hula omoluoita inja ja hovela pokati kovandouishi novafransa.

OLYE A KANITHA

Eyemele li na oothewa! Ngoka we li kanitha, ila kOshinyanyangidho, ngele omundonga, ndi ku pukulule, ngele omuniilongo, uukilila kUukuanjama ku Ruben Nikodemus, Okatope. (Omuyakuli Julius D. Niilonga.)

AALESHI TAA NYOLA

Gabriel Martin, Outjo, ote tu shangele ngaha: Ohandi pandula Kalunga ou e tu tumina ovahongi ve tu longa okushiiva Omuene na Jesus Kristus, Omukulili uetu. No handi pandula ovakuluñu vetu ovo ve li mongerki jetu, eshi ve tu fila oshisho no ku tu tumina jo ovaudifi vevangeli, ngashi fje ovaoutjo tu na ovaevangeliste vavali, have tu talele po no have tu longo ondjila ja juka momuenjo uaalushe.

Omukuetu, tala eendjovo edi Hebr. 14:17. Oua itavela tuu eendjovo dovakuluñu ovo tave ku kumaida. Omukuetu, ove ou u li moshilongo sha kula no ho mono ovalumeñu ava ilikana Kalunga e ku pa ovakuafi ava. Ondi ku uete u nelao linene shili. Fje tu li mehalakano meefalama, ekuafu eli lokomuenjo hatu li mono omafiku amue ake.

Tu diinineni atusheni tue shi longua kovakuluñu vetu nokukala meendjovo da Tate Kalunga. Ef. 6:1-3.

Lukas S. Shidute, Mariental, ta kumaida ovaaleshi aveshe neendjovo di li mu Jes. 55:1 na Rom. 14:7-9.

David Kapembe, Grootfontein, ota ti: Onda mono olwindji kutya, omuntu ngele ta yi tango koskola yeshasho no ta kala mo sigo ta shashwa, ihe kee na we uudhiginini okwihumitha komeho momalongo nomoohapu dha Kalunga. Omukwetu, inatu shashelwa uuyuni, ihe twa shashelwa omwenyogwa aluhe. Lesha Omayel. t. 7:1-6.

Toivo A. Ekandjo, Widhoek, ota halele omuleshi uOmukuetu enangeko nouputa no te mu kundifa neendjovo di li mEhol. 3:11.

Johanna Kristian, Oshigambo, ota kundu aaleshi yOmukwetu naakriste yalwe noohapu dhi li mu Joh. 2:15-17.

A. J. Nikodemus, Oshigambo, ota kundu aaleshi ayehe noohapu dhi li mu Mat. 6:24-25.

Albinus Muafangejo, Walvisbaai, ota ti: Ovameme novatate, otamu pumbwa eefigo no neendunge mokutekula oludalo leni, oñge mu ilikane, Omuene ne mu pe aishe tamu i pumbua omolua Jesus Kristus, Omukulili uetu.

Jason K. Ilonga, Oshitayi, ota nyola ngeyi: Nda hala ndi kunde aaleshi ayehe noohapu ndho Joh. 14:27-31 noku mu halele omumvo omupe gu nelago.

Filippus A. Nakanue, Walvisbaai, ote tu kundu ngaha: Ohai kundu ovaaleshi aveshe vOmukuetu neendjovo edi: Eps. 90:1-17 na Eps. 91:1-15. Onda hala nokuhalele omuleshi keshe uOmukuetu, u di leshe nomuenjo ue u eulula shili opo u ude nge Kalunga te ku lombuele. Tu kaleni alushe nokuilikana.



EDINA LA KALUNGA INO LI TONGELA OINIMA JONGAHO.

“Ou ta tongele edina lange oinima jongaho, itandi mu efa oku mu handukila.” Vakuetu, otu udite ko tuu? Ou ta tongele edina la Kalunga oinima jongaho, ote likongele oshiponga shinene, ehandu la Kalunga. Edina eli lijapuki la ninga oudano kovañu, otave li tongo ngaho moipupulu no moitja ii no moinima ja njata. Omo inatu uana okutonga edina eli lijapuki la Kalunga omunamuenjo. Hano tu taleni mOkatekisa nokulilonga oshipango oshitivali. Omukuetu, ove ue shi ninga nale, indila shili u diminue po ehandu eli lidjuu lihe shi okujekua na sha. Tala ovakulu vonale venja, ava va li moupaani vehe shi sha nande, ndele vo va li va fimaneka edina olo shili. Ovo ve li hongua, ove linekela shili edina eli.

Hano natu tileni ehandu la Kalunga medina laje lijapuki. Tala Mat. 5:34,37; Luk. 11:4; Rom. 1:25.

Abner Kavungo,
Walvisbaai.

Filemon E. Uusiku na Alfeus Nakale, Omaruru, otava ti ngaha: Ovakuetu vaholike, tu kondjeni neefigono da Jesus Kristus, osheshi efimbo eli lidjuu. 1Kor. 15:50-55. Hambeleleni Kalunga nokuilikana. Kundueni ovaaleshi aveshe vOmukuetu.

Sebulon J. Shuudeni, Omundaungilo, ota ti: Tate Kalunga okue tu shitila mounjuni, ndele keshe umue okue mu pa shi fike puje. Aishe e i shita mohole. Ndele momafimbo opaife oku na ovañu vahapu, inava didilika ohole ja Kalunga. Shashi va hovela okutondafana. Ndele vakuetu, ohatu futu ngahelipi ohole ja Tate Kalunga?

Isak Sisiueni, Oshigambo, ote tu hokololele nkene a adhika koshiponga, ihe Kalunga okwe mu kwatha. Onke ano ta ti: Ngoye ngoka ino adhika natango koshiponga sha sha, kotoka ano, ino dhimbwa egalikano, oshoka ekwatho ohali zi kOmuwa. Eps. 121.

Wilbard Mukuanama, Etunda, ota hokololele nkene ya talelwa po kaayenda oyendji no ya uuvithilwa oohapu dha Kalunga. “Onda hala oku mu kundila po, aakwane-gongalo amuhe mu Kristus Jesus noohapu dhi li mu 3Joh. 11-15, neimbilo 419.

OLUPANDU.

Ovakuetu ku C. D. M. kOranjemund, onda pandula eshi mua kuafa nge mokuvela kuange. Onda kala moipangelo jomovambo, ndele eendohotola va ti ndi je koshipangelo ku Windhoek. Onje no mua kuafa nge oimaliva okulikuafa najo okufika moshipangelo mu Windhoek. Ovamuameme ovaholike, ohandi mu kundu neendjovo dOmuene di li mu 1Joh. 4:7-9. Etungafano la tja ngaha nali hume komesho.

J. A. Nabili,
Ohalushu.

Nge wa hala okukwathwa mokukonakona Ombimbeli, nyolela ku
Enongelo Iyoontumwafo
Engela.

Oontumwafo 8 tadhi pula 25c kOwambo na 35c kUushimba.

FINSE SENDINGDRUKKERY
OVAMBOLAND
ONIIPA